

RESEARCH ARTICLE

# Mitochondrial P2X7 Receptor Localization Modulates Energy Metabolism Enhancing Physical Performance

Alba Clara Sarti<sup>1</sup>, Valentina Vultaggio-Poma<sup>1</sup>, Simonetta Falzoni<sup>1</sup>,  
Sonia Missiroli<sup>1</sup>, Anna Lisa Giuliani<sup>1</sup>, Paola Boldrini<sup>2</sup>, Massimo Bonora<sup>1</sup>,  
Francesco Faita<sup>3</sup>, Nicole Di Lascio<sup>3</sup>, Claudia Kusmic<sup>3</sup>, Anna Solini<sup>4</sup>,  
Salvatore Novello<sup>5</sup>, Michele Morari<sup>5</sup>, Marco Rossato<sup>6</sup>,  
Mariusz R. Wieckowski<sup>7</sup>, Carlotta Giorgi,<sup>1</sup> Paolo Pinton<sup>1</sup>,  
Francesco Di Virgilio<sup>1,\*</sup>

<sup>1</sup>Department of Medical Sciences, University of Ferrara, Ferrara 44121, Italy, <sup>2</sup>Center of Electronic Microscopy, University of Ferrara, Ferrara 44121, Italy, <sup>3</sup>Institute of Clinical Physiology, National Research Council, Pisa 56124, Italy, <sup>4</sup>Department of Surgical, Medical, Molecular, and Critical Area Pathology, University of Pisa, Pisa 56124, Italy, <sup>5</sup>Department of Biomedical and Specialty Surgical Sciences, University of Ferrara, Ferrara 44121, Italy, <sup>6</sup>Department of Medicine, University of Padova, Padova 35128, Italy, <sup>7</sup>Nencki Institute of Experimental Biology, PAS, Warsaw 02093, Poland

\*Address correspondence to F.D.V. (e-mail: fdv@unife.it)

## Abstract

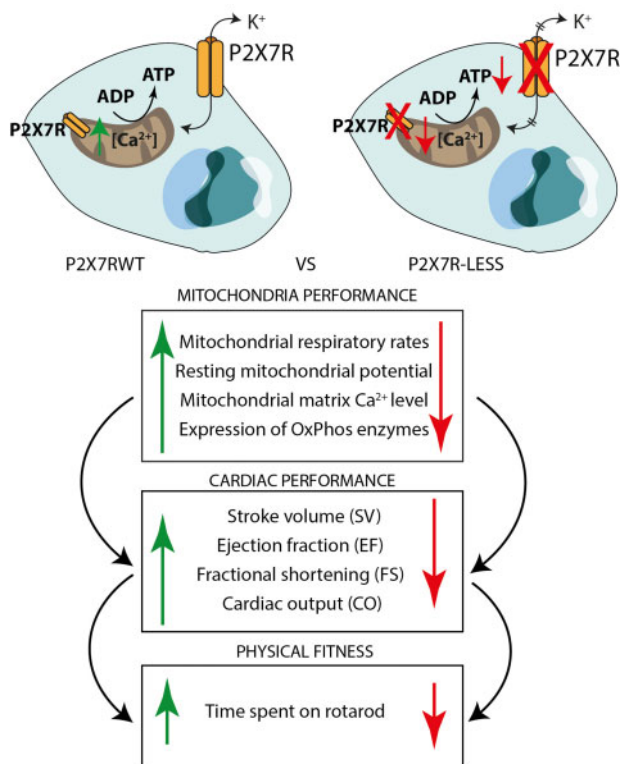
Basal expression of the P2X7 receptor (P2X7R) improves mitochondrial metabolism, Adenosine 5'-triphosphate (ATP) synthesis, and overall fitness of immune and non-immune cells. We investigated P2X7R contribution to energy metabolism and subcellular localization in fibroblasts (mouse embryo fibroblasts and HEK293 human fibroblasts), mouse microglia (primary brain microglia, and the N13 microglia cell line), and heart tissue. The P2X7R localizes to mitochondria, and its lack (1) decreases basal respiratory rate, ATP-coupled respiration, maximal uncoupled respiration, resting mitochondrial potential, mitochondrial matrix Ca<sup>2+</sup> level, (2) modifies expression pattern of oxidative phosphorylation enzymes, and (3) severely affects cardiac performance. Hearts from P2rx7-deleted versus wild-type mice are larger, heart mitochondria smaller, and stroke volume, ejection fraction, fractional shortening, and cardiac output, are significantly decreased. Accordingly, the physical fitness of P2X7R-null mice is severely reduced. Thus, the P2X7R is a key modulator of mitochondrial energy metabolism and a determinant of physical fitness.

Submitted: 17 December 2020; Revised: 25 January 2021; Accepted: 27 January 2021

© The Author(s) 2021. Published by Oxford University Press on behalf of American Physiological Society.

This is an Open Access article distributed under the terms of the Creative Commons Attribution License (<http://creativecommons.org/licenses/by/4.0/>), which permits unrestricted reuse, distribution, and reproduction in any medium, provided the original work is properly cited.

## Graphical Abstract



**Key words:** P2X7; extracellular ATP; purinergic signaling; mitochondria; oxidative phosphorylation; respiratory chain; dilated cardiomyopathy

## Introduction

Adenosine 5'-triphosphate (ATP), the universal energy currency, sustains all cellular functions and responses, and at the same time is also an extracellular messenger involved in cell-to-cell communication in virtually every tissue.<sup>1</sup> As an extracellular messenger, ATP is of remarkable importance at sites of cell damage or distress since it is one of the earliest and most important damage-associated molecular patterns (DAMPs) released.<sup>2,3</sup> Due to this dual role, as a DAMP and a high energy intermediate, changes in the extracellular ATP concentration in response to pathogens or to sterile injury might serve not only as alarm signals but also as triggers to activate cellular energy synthesis in conditions of high energy demand. This would make cells more reactive to the impending danger.

Virtually all cells are equipped with plasma membrane receptors for extracellular ATP, the P2 receptors (P2Rs).<sup>4</sup> P2Rs mediate a multiplicity of responses in the nervous, endocrine, immune, and cardiovascular systems. P2Rs are comprised of two subfamilies, the P2Y metabotropic (P2YR) and the P2X ionotropic (P2XR) receptors, each numbering eight and seven members, respectively. Within the P2XR subfamily, the P2X7 receptor (P2X7R) subtype is of interest for its peculiar permeability properties and its role in inflammation and cancer.<sup>5,6</sup> This receptor is in fact a very potent activator of the NLRP3 inflammasome and of IL-1 $\beta$  processing and release,<sup>7</sup> as well as a strong

promoter of cancer cell proliferation,<sup>8</sup> and, when over-activated, a trigger of cell death.<sup>9</sup> Survival-promoting effects are likely due to P2X7R capacity to support oxidative phosphorylation (OxPhos) and glycolysis, and thus enhance intracellular ATP synthesis.<sup>10,11</sup> Since during physical activity or at sites of inflammation the extracellular ATP concentration is several-fold increased,<sup>12,13</sup> the P2X7R might be considered a bioenergetics sensor enabling the intracellular ATP synthetic apparatus to sense extracellular ATP levels, and thus meet the increased energy demand. Along these lines, stimulation of the P2X7R has been previously shown to enhance energy metabolism in mice.<sup>14</sup> In this study, P2X7R subcellular localization and its effect on mitochondrial energy metabolism were investigated. As cellular models, we used cell types well-known for P2X7R expression and function, that is, fibroblasts (mouse embryo fibroblasts [MEFs], and P2X7R-transfected HEK293, HEK293-P2X7R, human fibroblasts), and microglia (primary brain microglia and the N13 microglia cell line). Mouse fibroblasts and mouse microglia were isolated from wild-type (WT) or P2rx7-deleted mice. N13 microglia was available as the WT cell line or the N13 R cell line selected for low P2X7R expression. Finally, to fully appreciate the functional impact of P2X7R-dependent mitochondrial dysfunction in a tissue heavily dependent on OxPhos, we investigated heart performance in WT and P2X7R-deleted mice. Altogether, these data show that the P2X7R localizes to the

mitochondria in different cell types, and its lack impairs OxPhos, affects cardiac performance, and decreases physical fitness.

## Materials and Methods

### Ethical Compliance

All mouse studies were performed under guidance of the University of Ferrara Institutional Animal Welfare and Use Committee and the Ethical Panel of the University of Pisa (approved protocol n. 943/2015-PR), in accordance with Italian regulatory guidelines and laws (D.Lvo 26/2014, Ministry of Health authorizations n. 75/2013-B and 76/2013-B), and the European Directive (2010/63/UE).

### Reagents

Benzoyl ATP (BzATP; cat. n. B6396), rotenone (cat. n. R8875), hydrogen peroxide (H<sub>2</sub>O<sub>2</sub>) solution (cat. n. 16911), and methylsuccinate (cat. n. M81101) were purchased from Sigma-Aldrich (St. Louis, MO, USA). Tetramethylrhodamine methyl ester (TMRM; cat. n. T668, Molecular Probes, Leiden, The Netherlands) was dissolved in DMSO to obtain a 10 mM stock solution and then diluted in the appropriate buffer. Carbonyl cyanide  $\alpha$ -[3-(2-benzothiazolyl)6-[2-[2-[bis(carboxymethyl)amino]-5-methylphenoxy]-2-oxo-2H-1-benzopyran-7yl]-b-(carboxymethyl)-tetrapotassium salt (FCCP; cat. n. C2920; Sigma-Aldrich) was solubilized in ethanol to a final stock concentration of 10 mM. For Seahorse analysis, a Seahorse XF Cell Mito Stress Test Kit was used including the following compounds: oligomycin (stock solution 100  $\mu$ M), FCCP (stock solution 100  $\mu$ M), and a mix of rotenone/antimycin A (stock solution 50  $\mu$ M) (cat. n. 103015-100, Agilent, Santa Clara, CA, USA). Crystal violet was purchased from Sigma-Aldrich (cat. n. C0775) and used as a 0.1% solution in 10% ethanol. Krebs–Ringer bicarbonate solution (KRB) contained 125 mM NaCl, 5 mM KCl, 1 mM MgSO<sub>4</sub>, 1 mM Na<sub>2</sub>HPO<sub>4</sub>, 5.5 mM glucose, 20 mM NaHCO<sub>3</sub>, 2 mM l-glutamine and 20 mM HEPES (pH 7.4), and was supplemented with 1 mM CaCl<sub>2</sub>.

### Cell Culture and Transfections

HEK293 cells were cultured in DMEM-F12 (cat. n. D6421, Sigma-Aldrich) supplemented with 10% heat-inactivated fetal bovine serum (FBS, cat. n. 16000044), 100 U/mL penicillin, and 100 mg/mL streptomycin (cat. n. 15140130) (all from Invitrogen, San Giuliano Milanese, Italy). Stable P2X7R-transfected clones were kept in the continuous presence of 0.2 mg/mL G418 sulfate (Geneticin, cat. n. 509290; Calbiochem, La Jolla, CA, USA). Experiments, unless otherwise indicated, were performed in the following saline solution: 125 mM NaCl, 5 mM KCl, 1 mM MgSO<sub>4</sub>, 1 mM NaH<sub>2</sub>PO<sub>4</sub>, 20 mM HEPES, 5.5 mM glucose, 5 mM NaHCO<sub>3</sub>, and 1 mM CaCl<sub>2</sub>, pH 7.4. N13 microglial cells, WT (N13 WT), and ATP-resistant (N13 R), were cultured in RPMI 1640 medium, (cat. n. R0883; Sigma-Aldrich), supplemented with 10% heat-inactivated FBS, 100 U/mL penicillin, and 100 mg/mL streptomycin. Primary mouse microglia cells were isolated from 2- to 4-day-old post-natal mice as described previously.<sup>15</sup> More than 98% of cells were identified as microglia using a macrophage cell-specific F4/80 rabbit monoclonal antibody (cat. n. MCA497; Serotec, Dusseldorf, Germany) followed by staining with Oregon Green 488 goat anti-rabbit IgG (cat. n. O-11038; Molecular Probes). Microglia cells were plated in astrocyte-conditioned high glucose-DMEM medium (cat. n. 10566016), supplemented with 2 mM glutaMAX<sup>TM</sup> (Gibco Life Technologies Europe BV, Monza,

Italy), 10% heat-inactivated fetal calf serum (FCS), 100 U/mL penicillin, and 100 mg/mL streptomycin, and used for experiments 24 h after plating. MEFs were isolated from pregnant mice at 13 or 14 days post coitum. Mice were sacrificed by cervical dislocation, embryos were harvested, and MEFs were isolated as previously described<sup>16</sup> and cultured in DMEM medium supplemented with 10% FBS, penicillin/streptomycin, and 2 mM L-glutamine.

### Seahorse Analysis

Oxygen consumption in cell lines (N13 WT, N13 R, HEK293 WT, and HEK293-P2X7R) and primary cells (microglia and MEFs) was measured using the Seahorse Bioscience XF96 Extracellular Flux Analyzer (Seahorse Bioscience, Agilent, Santa Clara CA, USA). Cells were seeded in triplicate in XF96 96-well cell culture plates (Seahorse Bioscience) in a volume of 80  $\mu$ L/well in DMEM complete medium at a density of 15 000/well (HEK293), 20 000/well (microglia and MEF), or 22 000/well (N13 WT and N13 R). The XF96 sensor cartridge was hydrated with 200  $\mu$ L/well of XF Calibrant buffer and placed overnight in a 37°C incubator without CO<sub>2</sub>. On Day 2, incubation medium was replaced just before running the assay with Seahorse assay medium supplemented with glucose (10 mM) and sodium pyruvate (2 mM), pH 7.4, and equilibrated for 1 h at 37°C in the absence of CO<sub>2</sub>. Oligomycin, to inhibit ATP synthesis, FCCP, to uncouple OxPhos, and a mix of rotenone/Antimycin A, to block electron transport, were sequentially added at various times. Oxygen consumption rates (OCRs) were measured before and after injection of the different inhibitors. OCRs were normalized to cell content in each well determined by crystal violet staining.

### Measurement of Mitochondrial Membrane Potential and Ca<sup>2+</sup> Concentration

Mitochondrial membrane potential ( $\Delta\Psi$ m) was measured by confocal microscopy with TMRM (10 nM), at an emission wavelength of 570 nm. FCCP was used to collapse  $\Delta\Psi$ m. Mitochondrial Ca<sup>2+</sup> concentration was measured with the last-generation GCaMP probe targeted to the mitochondrial matrix.<sup>17</sup> We chose the GCaMP6m version due to its high Ca<sup>2+</sup> affinity (K<sub>d</sub> of 167 nM). HEK293 and HEK293-P2X7 cells were grown on 24-mm coverslips, transfected with mtGCaMP6m-encoding plasmid, and imaged with an IX-81 automated epifluorescence microscope (Olympus Italy, Segrate, Italy) equipped with a 40 $\times$  oil immersion objective (numerical aperture 1.35) and an ORCA-R2 charge-coupled device camera (Hamamatsu Photonics, Hamamatsu, Japan). Excitation wavelengths were 494/406 nm and emission 510 nm. The 496/406 ratio is proportional to the Ca<sup>2+</sup> concentration and independent of probe expression level. Analysis was performed with ImageJ.

### NADH Measurement

NADH autofluorescence was measured using an inverted epifluorescence microscope equipped with a 40 $\times$  oil-fluorite objective. Excitation at a wavelength of 360 nm was provided by a xenon arc lamp, with the beam passing through a monochromator (Cairn Research, Graveney Road, Faversham, UK). Emitted light was reflected through a 455 nm long-pass filter to a cooled Retiga QImaging CCD camera (Cairn Research) and digitized to 12-bit resolution. Imaging data were collected and analyzed with ImageJ. Alternatively, NADH levels in N13 WT and N13 R cells were measured using a NAD/NADH assay kit (NAD/NADH Assay Kit, Colorimetric, cat. n. ab65348, Abcam, San Francisco, CA, USA), according to manufacturer's indications.

### Subcellular Fractionation

Cells were harvested, rinsed in PBS by centrifugation at 500  $\times$  g for 5 min, re-suspended in homogenization buffer (225 mM mannitol, 75 mM sucrose, 30 mM Tris-HCl, 0.1 mM EGTA, and phenylmethylsulfonyl fluoride, PMSF, pH 7.4) and gently disrupted by dounce homogenization. The homogenate was centrifuged twice at 600  $\times$  g for 5 min to remove nuclei and unbroken cells, and the supernatant centrifuged at 10300  $\times$  g for 10 min to pellet crude mitochondria. The supernatant was further centrifuged at 100000  $\times$  g for 90 min in a 70-Ti rotor (Beckman Coulter, Indianapolis, IN, USA) at 4°C to pellet the endoplasmic reticulum (ER) fraction. The crude mitochondrial fraction (MF), re-suspended in isolation buffer (250 mM mannitol, 5 mM HEPES, 0.5 mM EGTA, pH 7.4), was centrifuged through Percoll gradient (Percoll medium: 225 mM mannitol, 25 mM HEPES pH 7.4, 1 mM EGTA and 30% v/v Percoll, cat n. GE17-0891-01, Sigma-Aldrich) in a 10-mL polycarbonate ultracentrifuge tube. After centrifugation at 95 000  $\times$  g for 30 min a dense band containing purified mitochondria (highly purified mitochondria, HMF) was recovered near the bottom of the gradient and further processed as described.<sup>18</sup> Purity of the preparation was assessed by Western blot analysis of ER and mitochondrial markers. For MF and HMF, a total of at least 600 mg of isolated mitochondria was re-suspended in different buffers, that is, isosmotic buffer (10 mM Tris-MOPS, 0.5 mM EGTA-Tris, 0.2 M Sucrose, pH 7.4) with or without proteinase K (PK; 100  $\mu$ g/mL), hyposmotic buffer (10 mM Tris-MOPS, 0.5 mM EGTA-Tris pH 7.4) plus PK (100  $\mu$ g/mL) and hyposmotic buffer plus PK (100  $\mu$ g/mL) and Triton (0.01% v/v Triton X-100). Samples were incubated on ice for 30 min with gentle mixing. After this time, 2 mM PMSF was added and the samples were incubated for an additional 5 min at 4°C. Proteins were precipitated with TCA/Acetone, 10% trichloroacetic acid in acetone (w/v) in a 1:6 ratio, precipitated at 4°C for 30 min, and centrifuged at 14000  $\times$  g for 30 min at 4°C. Supernatant was discarded and the pellet was washed with 500  $\mu$ L ice-cold acetone. Samples were centrifuged at 14000  $\times$  g for 15 min at 4°C, re-suspended in Laemmli sample buffer, and separated by SDS-PAGE.

### Isolation of Mitochondria from Mouse Heart

Mouse hearts were washed twice with ice-cold PBS buffer to remove blood, minced, and finally re-suspended in buffer A (180 mM KCl, 10 mM EDTA, 20 mM Tris-HCl pH 7.4), plus 0.5 mg/mL trypsin. Samples were then incubated for 30 min at 4°C under magnetic stirring. At the end of this incubation, they were re-suspended in buffer B (180 mM KCl, 20 mM Tris-HCl, and 0.05 mg/mL albumin, pH 7.4). The homogenate was centrifuged twice at 4°C for 2 min at 600  $\times$  g, the supernatant collected and further centrifuged at 4°C for 10 min at 25 000  $\times$  g. The pellet (crude mitochondria) was re-suspended in isolation buffer and processed as described in "Subcellular fractionation" to obtain ultra pure mitochondria.

### Calculation of Heart Volume and Weight

Hearts from 8-week-old C57BL/6-WT or C57BL/6-P2X7-KO mice were isolated, washed in cold PBS, weighted, and measured with a caliper. The following formula was used to calculate volume:  $\text{volume} = \pi/6 \times \text{length} \times \text{width}^2$ .

### Histology

Samples were reduced and fixed in 2.5% glutaraldehyde in 0.1 M phosphate buffer, pH 7.4, and post-fixed in 2% osmium

tetroxide in the same buffer, dehydrated by increasing passages in acetone and included in Araldite Durcupan ACM (Fluka address). Semi-thin sections were prepared with a Reichert Ultracut S ultramicrotome (Leica Microsystems, Buccinasco, Italy), stained with a 1% aqueous solution of toluidine blue, and observed with a light Nikon Eclipse E800 microscope (Nikon Corporation, Tokyo, Japan). Ultrathin sections were prepared with a Reichert Ultracut S ultramicrotome, counterstained with uranyl acetate in saturated solution and lead citrate,<sup>19</sup> and observed with a transmission electron microscope Hitachi H800 at 100 kV (Hitachi High Technologies Corporation, Brughiero, Italy).

### Measurement of Reactive Oxygen Species

The fluorogenic substrate 2',7'-dichlorofluorescein diacetate (DCFDA) was used to measure reactive oxygen species (ROS). Fluorescence intensity was measured with an image-based cytometer (Tali™ Image-based Cytometer, Invitrogen). Cells were pipetted into a Tali Cellular Analysis Slide and loaded into the cytometer. Bright field and green fluorescence images were captured and analyzed with specific assay algorithms. Histograms were then generated to display cell size and fluorescence intensity.

### Western Blot

Total cell lysates were prepared in RIPA buffer, 50 mM Tris-HCl pH 7.8, 150 mM NaCl, 1% IGEPAL CA-630 (Sigma-Aldrich), 0.5% sodium deoxycholate, 0.1% SDS, 1 mM dithiothreitol, supplemented with protease and phosphatase inhibitors (Inhibitor Cocktail cat. n. P8340, Sigma-Aldrich). Protein concentration was quantified with the Bradford assay (cat n. 5000001, Bio-Rad Laboratories, Segrate, Italy). Proteins, 15  $\mu$ g/lane, were separated by SDS-PAGE, transferred to nitrocellulose membranes, and probed with the different antibodies used at the following dilutions: anti-P2X7 C-terminal, 1:500 (cat. n. APR-004, Alomone, Jerusalem, Israel); anti-P2X7 N-terminal 1:500 (cat. n. SAB2501287, Sigma-Aldrich); anti-P2X7 extracellular loop 1:200 (cat. n. P9122, Sigma-Aldrich) anti-TOM 20, 1:1000 (cat. n. D8T4N, Cell Signaling, Leiden, The Netherlands); anti-Hsp60, 1:1000 (cat. n. sc-376240; Santa Cruz); anti- $\beta$ -Tubulin, 1:1000 (cat. n. T5201; Sigma-Aldrich); anti-myosin IIB 1:1000 (cat. n. M7939; Sigma-Aldrich); anti-TIM 23, 1:2000 (cat. n. ab230253 Abcam); anti-actin, 1:5000 (cat. n. A5441, Sigma-Aldrich). Densitometric analysis was performed with the ImageJ software.

### Immunofluorescence

HEK293-P2X7R cells were fixed in 4% paraformaldehyde in PBS for 15 min, washed 3 times with PBS, permeabilized for 10 min with 0.1% Triton X-100 in PBS, and blocked in 2% BSA-containing PBS for 20 min. Cells were then incubated overnight at 4°C in a wet chamber with the following antibodies: anti-P2X7 (cat. n. P8232; Sigma-Aldrich) and anti-TOM20 (cat. n. 43406, Cell Signaling) diluted 1:100 in 2% BSA-containing PBS. Staining was then carried out with anti-rabbit Alexa 546 (cat. n. A-11010; Thermo Fisher Scientific Italy, Monza, Italy) for P2X7R receptor, or with anti-mouse Alexa 633 for TOM20 (cat. n. A-21052; Thermo Fisher Scientific). Cells were then washed 3 times with 0.1% Triton X-100 in PBS. Samples were mounted in ProLong Gold antifade (Invitrogen) and images captured with a confocal microscope (LSM 510; Carl Zeiss, Arese, Italy).

## Wound Healing Assay

N13 WT and N13 R cells were grown to confluence in 24-well plates, RPMI medium was replaced with low serum RPMI medium to slow down proliferation, and the wounds were made simultaneously in all wells with a sterilized pipette tip. Phase-contrast pictures were taken at 0 and 24 h. Cell migration was observed in control condition and after treatment with 2.5 mM methyl succinate. The open wound area at time 0 h was set at 100%. Images were analyzed with an open-source ImageJ software.

## Infrared Thermal Imaging

Infrared thermal imaging was performed using a thermoelectrically cooled Thermacam P25 camera (Flir Systems Inc., Wilsonville, OR, USA) equipped with a scanner and  $24^\circ \times 18^\circ$  lens which detects a 7.5–13  $\mu\text{M}$  spectral response, as previously reported,<sup>20</sup> and an internal calibration system with an accuracy of 0.04°C. The focal distance was 30 cm. Images were captured and analyzed using the Flir quick report software according to manufacturer's specifications. Each mouse (anesthetized with 2.5% isoflurane) was placed on a table at a fixed distance from the camera and images were captured in triplicate.

## High-Frequency Ultrasound Examination of Mouse Heart Function

Sixteen WT and 16 P2X7-KO male mice were examined with a high-resolution US imaging system (Vevo 2100, FUJIFILM VisualSonics Inc, Toronto, Canada) at 11–12 weeks of age. Animals were anesthetized with isoflurane in an induction chamber connected with a scavenger canister. After induction, each mouse was placed on a temperature-controlled board and the four limbs were coated with conductive paste (Signa Cream, Parker Laboratories Inc., Fairfield, Connecticut, USA) and taped with ECG electrodes. A nose cone was used to keep mice under gaseous anesthesia (1.5% isoflurane in 1 L/min of pure oxygen) during examination, and heart rate (HR), respiration rate, and body temperature were monitored and acquired using the Advancing Physiological Monitoring Unit attached to imaging station. The abdomen was shaved with depilatory cream (Nair, Church & Dwight Canada Corp., Mississauga, ON, Canada) and coated with acoustic coupling gel (SonoSite Cogel, Comedical Sas, Trento, Italy). For acquisition, a 40 MHz US probe (MS550D, FUJIFILM VisualSonics) held in position by a mechanical arm was employed. Images of the heart were acquired using the B-mode modality in parasternal long axis (PLAX) view, and then analyzed offline to assess cardiac structure and function (VevoLAB, FUJIFILM VisualSonics Inc.). Systolic and diastolic volumes (Vols and Vold), stroke volume (SV), ejection fraction (EF), longitudinal fractional shortening (FS), and cardiac output (CO) were evaluated using the LV Trace analysis tool.<sup>21,22</sup>

## Rotarod

The rotarod test provides information on motor parameters such as coordination, gait, balance, and motivation to run and muscle tone.<sup>23</sup> The fixed-speed rotarod test was performed as previously described.<sup>24</sup> Animals (six C57BL/6 WT and six C57BL/6-P2X7-KO) were placed on a rotating cylinder of 8 cm in a step-wise mode at increasing speeds (from 5 to 45 rpm; 180 s each) and latency to fall was recorded. Three consecutive sessions were run. Prior to testing, animals were trained for three

consecutive days. The cut-off time was set to 30 min and the total time spent on the rod was calculated.

## Statistical Analysis of Biochemical and Rotarod Data

All data are shown as mean  $\pm$  SEM. Statistical significance was calculated assuming equal SD and variance, with a two-tailed Student's t-test performed with the GraphPad Prism software. A P-value  $\leq 0.05$  was considered significant. P values for each experiment were calculated and reported in the figure legends.

## Statistical Analysis of Cardiac Parameters

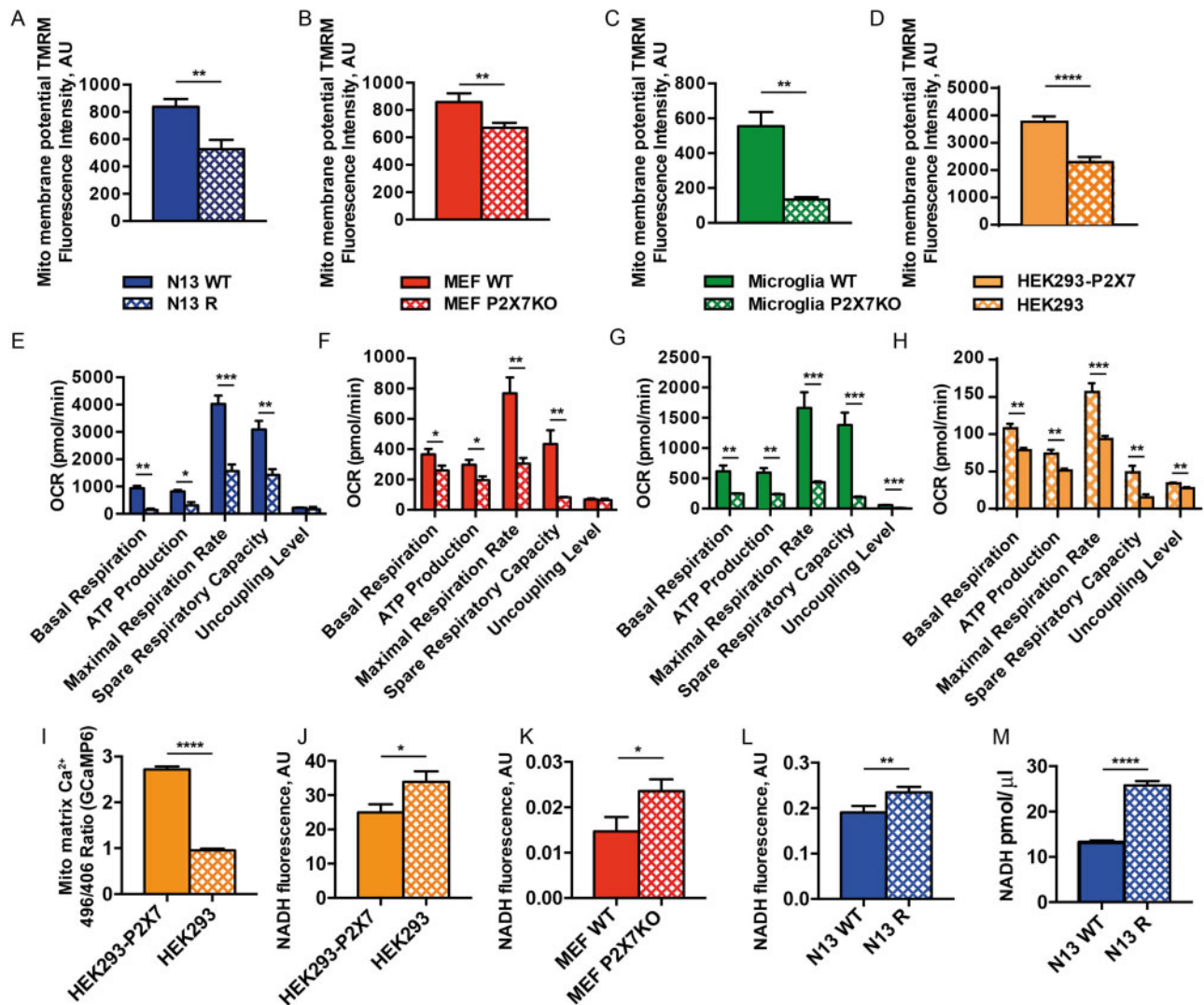
The sample size was fixed taking CO as test parameter to allow for higher variability due to combination of geometrical measurements and HR assessments. Considering a standard deviation for CO measure of  $\sim 25\%$  and a difference between WT and P2X7-KO mice of  $\sim 30\%$  (power  $\geq 80\%$  and alpha equal to 0.05, test significant for  $P < 0.05$ ), a sample size of 10 was obtained. All data are presented as average  $\pm$  SEM. Two-sided Mann-Whitney test for independent samples was used to highlight differences between WT and P2X7 KO animals. Tests were considered statistically significant with  $P < 0.05$ .

## Results

### Lack of the P2X7R Impairs Energy Metabolism

In a previous study, we showed that P2X7R expression in human HEK293 fibroblasts increases mitochondrial  $\text{Ca}^{2+}$  concentration, mitochondrial membrane potential and overall intracellular ATP content.<sup>10</sup> Figure 1A–C and E–G show that P2X7R down-modulation or *P2rx7* gene deletion decreases resting mitochondrial potential and severely impairs all respiratory indexes in N13 microglia cells, primary mouse microglia, and MEFs. Accordingly, overexpression of the P2X7R in cells lacking the endogenous receptor (eg, human HEK293 cells) increases mitochondrial potential and improves all respiratory indexes (Figure 1D and H). Partially depolarized mitochondria are anticipated to have lower matrix  $\text{Ca}^{2+}$  levels as the driving force for  $\text{Ca}^{2+}$  is reduced. To verify this prediction we measured mitochondrial  $\text{Ca}^{2+}$  with the FRET-based GCaMP indicator. As shown in Figure 1I, mitochondrial matrix  $\text{Ca}^{2+}$  level is significantly lower in HEK293 WT versus P2X7R-transfected HEK293 cells (HEK293-P2X7R). Previous data showed that mitochondrial dehydrogenase activity is modulated by the mitochondrial matrix  $\text{Ca}^{2+}$  concentration,<sup>25</sup> thus we verified whether lack of P2X7R is associated with changes in the NADH concentration. In HEK293-P2X7R cells, higher matrix  $\text{Ca}^{2+}$  concentration is associated to lower intra-mitochondrial NADH levels (Figure 1J), and accordingly MEFs from *P2rx7*-deleted mice and mouse microglia selected for low P2X7R expression (N13R microglia) show higher intra-mitochondrial NADH levels (Figure 1K–M).

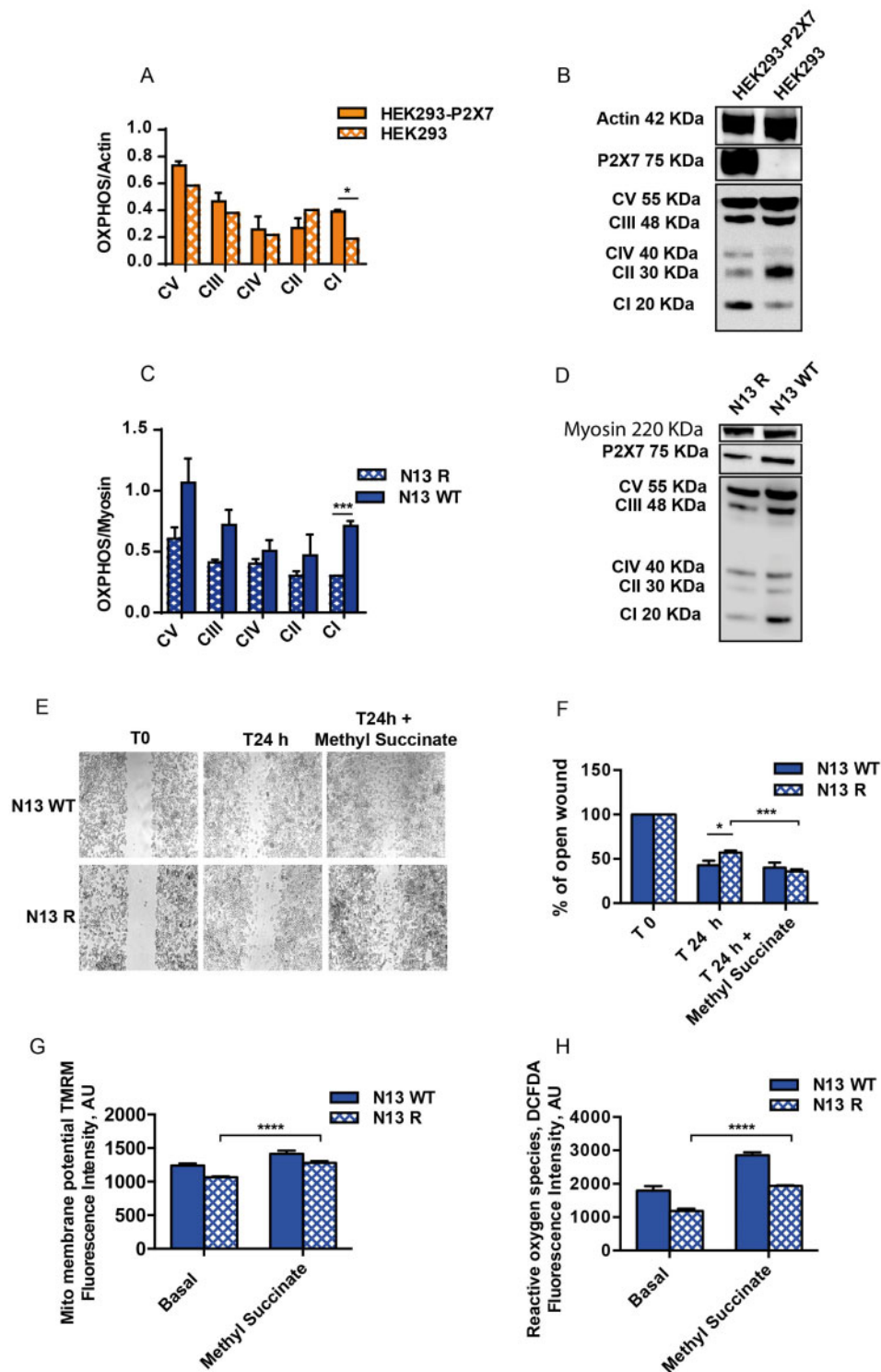
Based on the known  $\text{Ca}^{2+}$  dependency of mitochondrial dehydrogenases,<sup>25</sup> we anticipated that NADH levels should be lower in the presence of lower matrix  $\text{Ca}^{2+}$  concentrations, while in fact they are higher. Thus, we hypothesized that accumulation of NADH in the absence of P2X7R could be rather due to reduced Complex I activity. To support this hypothesis, we found that HEK293-P2X7R and P2X7R-sufficient N13 WT cells show increased Complex I protein levels compared to HEK293-WT and P2X7R-deficient N13 R cells, respectively (Figure 2A–D). It is therefore likely that lower matrix  $\text{Ca}^{2+}$  in P2X7R-deficient cells is the result of the reduced mitochondrial potential due to



**Figure 1.** Lack of the P2X7R Impairs Mitochondrial Potential, Oxygen Consumption, Calcium Level and Causes Intra-Mitochondrial NADH Accumulation. Cells, plated on 12-mm glass coverslips (A–D), were loaded with TMRM (20 nM) at 37°C for 20 min in KRB buffer. Fluorescence was measured with a Zeiss LS510 confocal microscope. Images were then analyzed with ImageJ software. Mitochondrial membrane potential ( $\Psi_m$ ) was expressed as the ratio between TMRM fluorescence (in arbitrary units [AUs]) before and after FCCP addition. Exact fluorescence AU values: N13 WT (average  $\pm$  SEM = 838.5  $\pm$  55.96,  $n$  = 13) or N13 R (average  $\pm$  SEM = 527.9  $\pm$  66.60,  $n$  = 14) (A); MEFs WT (average  $\pm$  SEM = 886.6  $\pm$  59.86;  $n$  = 31) or MEFs P2X7-KO (average  $\pm$  SEM = 671.5  $\pm$  35.49,  $n$  = 43) (B); primary WT microglia (average  $\pm$  SEM = 551.1  $\pm$  81.53,  $n$  = 20) or primary P2X7-KO microglia (average  $\pm$  SEM = 134.0  $\pm$  13.69,  $n$  = 8) (C); HEK293-P2X7 (average  $\pm$  SEM = 3769  $\pm$  191.0,  $n$  = 47) or HEK293 (average  $\pm$  SEM = 2296  $\pm$  187.7,  $n$  = 45) (D). Alternatively, cells were plated in XF96 96-well cell culture plate (E–H) and analyzed for oxygen consumption in a Seahorse apparatus. Exact averages  $\pm$  SEM for Panels E–H are shown in [Supplementary data, Table S1](#). OCR was normalized on cell content. Data are presented as average  $\pm$  SEM of  $n$  = 3 for Panels E–G and  $n$  = 7 for Panel H. HEK293-P2X7R (average arbitrary fluorescence units  $\pm$  SEM = 2717  $\pm$  0.069,  $n$  = 57) or HEK293 (average arbitrary fluorescence units  $\pm$  SEM = 0.95  $\pm$  0.039,  $n$  = 58) cells were transfected with the mitochondrial-selective FRET-based, GCaMP fluorescent Ca<sup>2+</sup> indicator (I), or analyzed for NADH autofluorescence with a fluorescence microscope (average arbitrary fluorescence units  $\pm$  SEM, HEK293-P2X7R = 23.33  $\pm$  2.07,  $n$  = 25; HEK293 = 31.31  $\pm$  2.92,  $n$  = 31) (J). MEFs WT (average arbitrary fluorescence units  $\pm$  SEM = 0.015  $\pm$  0.002,  $n$  = 11) or MEFs P2X7R-KO (average arbitrary fluorescence units  $\pm$  SEM = 0.026  $\pm$  0.002,  $n$  = 23) (K), and N13 WT (average arbitrary fluorescence units  $\pm$  SEM = 0.19  $\pm$  0.01,  $n$  = 24) or N13 R (average arbitrary fluorescence units  $\pm$  SEM = 0.23  $\pm$  0.01,  $n$  = 37) (L), were also analyzed for NADH fluorescence. Fluorescence emission was acquired with an IX-81 Olympus automated epifluorescence microscope as described in Materials and Methods. Intracellular content (pmol/ $\mu$ l) of NADH for N13 WT (average  $\pm$  SEM = 13.18  $\pm$  0.25,  $n$  = 3) and N13 R (average  $\pm$  SEM = 25.80  $\pm$  0.39,  $n$  = 3) (I) was also measured with a NAD/NADH Assay Kit, as described in Methods.  $P$ -values are calculated with the two-tailed unpaired Student's  $t$ -test; \* $P$  < 0.05; \*\* $P$  < 0.01; \*\*\* $P$  < 0.001; \*\*\*\* $P$  < 0.0001.

lower Complex I expression, and thus to reduced respiration as shown in [Figure 1](#). We also observed reduced Complex II expression in HEK293-P2X7R versus HEK293-WT cells, while no changes in Complex II expression are found in N13 WT versus N13 R cells. We then estimated total mitochondrial content of N13 and MEF cells by measuring expression of the mitochondrial markers TOM20, TIM23, and Hsp60. As shown in [Supplementary Appendix Figure 1](#), mitochondrial markers are

not significantly reduced in the absence of the P2X7R. In N13 cells, reduced expression of the P2X7R decreases mitochondrial membrane potential ([Figure 2G](#)) and impairs P2X7R physiological responses such as motility ([Figure 2E and F](#)) and oxygen radical generation ([Figure 2H](#)). All these responses are restored by supplementation of methyl-succinate, a Site II electron donor that bypasses Site I, and therefore compensates reduced NADH dehydrogenase activity.



**Figure 2.** Lack of the P2X7R Decreases Complex 1 Content of Mitochondrial Respiratory Chain and Compromises Physiological Responses of Cells. Densitometry (A, C) and Western Blot (B, D) for respiratory chain complexes (OXPHOS) from HEK293 or HEK293-P2X7R, and N13 WT or N13 R cells is shown. Average absorbance (AU)  $\pm$  SEM for HEK293-P2X7 =  $0.389 \pm 0.0141$ ,  $n = 3$ ; HEK293 =  $0.1886 \pm 0.059$ ,  $n = 3$ ; N13 R =  $0.301 \pm 0.0018$ ,  $n = 3$ ; N13 WT =  $0.712 \pm 0.039$ ,  $n = 3$ . Ten micrograms of protein was loaded in each lane. Scratch wound assay in N13 WT or N13 R culture (E). Cells were grown in 24-well plates and the wounds were made with a sterilized one-milliliter pipette tip at the same time in all wells at 80% confluence. Wound width (F) was measured with Image J at time 0 (T0) and after 24 h (T24). Average  $\pm$  SEM wound width at T24 as a percentage at T0 was  $42.67 \pm 5.28$ ,  $n = 5$ , for N13 WT, and  $57.11 \pm 2.269$ ,  $n = 5$ , for N13 R. In the presence of 2.5 mM methylsuccinate wound width at T24 was  $35.90 \pm 2.39$  for N13 R, and  $40.14 \pm 5.64$ ,  $n = 5$ , for N13 WT. Mitochondrial potential in the absence or presence of 2.5 mM methyl succinate was measured by TMRM fluorescence with an epifluorescence microscope (average arbitrary fluorescence units  $\pm$  SEM, N13 R basal  $1075 \pm 16.19$ ,  $n = 35$ , versus N13 R + methylsuccinate  $1265 \pm 29.35$ ,  $n = 35$ ) (G). Oxygen radical production in the absence or presence of 2.5 mM methyl succinate was measured by 2',7'-dichlorodihydrofluorescein (DCFDA) with a Tali image-based cytometer (average fluorescence AUs  $\pm$  SEM for N13 WT basal  $1795 \pm 68.67$ ,  $n = 438$ ; N13 R basal  $1184 \pm 34.20$ ,  $n = 347$ ); N13 WT + methylsuccinate  $2854 \pm 111.7$ ,  $n = 439$ ; N13 R + methylsuccinate  $1933 \pm 41.26$ ,  $n = 383$ ) (H), as described in Materials and Methods. P-values are calculated with the two-tailed unpaired Student's t-test. \* $P < 0.05$ ; \*\* $P < 0.01$ ; \*\*\* $P < 0.001$ ; \*\*\*\* $P < 0.0001$ .

### The P2X7R Localizes to the Mitochondria

Previous data hinted to a P2X7R localization to the nuclear membrane,<sup>26</sup> and possibly to phagosomes.<sup>27</sup> Due to its dramatic effect on OxPhos, we hypothesized that the P2X7R, besides its canonical plasma membrane expression, might also localize to the mitochondria. To address this issue, we probed MFs from cells natively expressing the P2X7R, that is, MEF WT, and N13 WT, or transfected with the P2X7R, that is, HEK293-P2X7R, with an anti-P2X7R antibody raised against the C-terminal domain. As shown in Figure 3A–C, a band of the approximate MW of 75 kDa is labeled in MFs from the three different cell populations. A band corresponding to the P2X7 subunit is clearly visible not only in a mitochondrial preparation obtained according to standard fractionation procedures, but also in a highly purified MF (HMF) enriched in mitochondrial calcium uniporter (MCU) content and fully lacking Inositol 3 phosphate (IP3) receptor 3 (IP3R3) and  $\beta$ -tubulin.

To clarify the membrane topology of the P2X7 subunit, this HMF from HEK293-P2X7R (Figure 4A, C, and E) and N13 WT (Figure 4B, D, and F) cells was treated with PK in iso-osmotic or hypo-osmotic medium and stained with antibodies raised against the C- or N-terminal tail, or against the P2X7R extracellular loop. PK treatment in iso-osmotic medium abrogates staining with the anti-extracellular loop antibody as well as TOM20 staining, a transporter localized on the outer mitochondrial membrane, but does not affect P2X7R staining with the anti-C-terminal and the anti-N-terminal antibodies, or with an antibody against TIM23, a transporter localized on the inner mitochondrial membrane. Treatment with PK in hypo-osmotic medium, which causes mitochondrial swelling and thus permeabilizes the outer membrane, decreases but does not abrogate staining with either the N- or the C-terminal antibody. TIM23 labeling is also strongly decreased in hypo-osmotic medium. Finally, membrane solubilization by Triton X-100 treatment, which makes all mitochondrial compartments accessible to PK, abolishes reactivity to all antibodies. These data show that the bulky middle P2X7R domain (the extracellular loop) is exposed on the outer mitochondrial membrane, facing the cytoplasm. However, both the N- and C-termini are largely protected against proteolytic cleavage under hypo-osmotic conditions, which suggests that they might be embedded into the phospholipid bilayer. The P2X7R C-terminus is known to be highly palmitoylated,<sup>28,29</sup> a modification that facilitates insertion into the lipid bilayer.

We next investigated mitochondrial P2X7R localization by confocal microscopy. To this aim, HEK293-P2X7R cells were co-labeled with an anti-P2X7R C-tail antibody and an anti-TOM20 antibody (Figure 5A–D). Under resting conditions, weak P2X7R localization to the mitochondria is detected (yellow arrows in the inset in Panel A). Mitochondrial localization is enhanced by stimulation with the P2X7R agonist BzATP, or with stressing

agents such as rotenone or H<sub>2</sub>O<sub>2</sub> (yellow arrows in insets in Panels B–D, and Panels E–G). P2X7R recruitment to the mitochondria starts soon after application of the different stimulants, and reaches a peak after ~1 h with BzATP or rotenone, while with H<sub>2</sub>O<sub>2</sub> peak increase is much faster (10 min), followed by a decline after 1 h, and by a delayed increase at 6 h. Total P2X7 subunit cell content does not change in response to the different stimuli (Figure 5H).

Lack of P2X7R heavily affects several immune cell pathophysiological responses, very likely due to a defective energy metabolism.<sup>5,30–33</sup> We thus wondered whether P2X7R lack might cause effects extending beyond immunometabolism, for example, to other tissues heavily dependent on OxPhos. We thus investigated P2X7R localization and function in the heart.

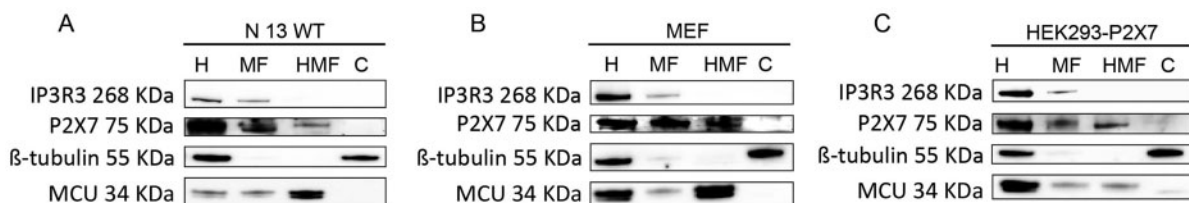
### The P2X7R Localizes to Heart Mitochondria and Affects Heart Function

The P2X7R is expressed in whole mouse hearts and in a highly purified MF (HMF) (Figure 6A). Hearts from P2X7R-KO mice lack P2X7R immunoreactivity (Figure 6B), do not differ in weight from those from P2X7R-WT, but are of significantly larger size (Figure 6C–D). Morphometric analysis by electron microscopy revealed that mitochondria from P2X7R-KO versus P2X7R-WT mice are slightly but significantly smaller (Figure 6E–G), although total mass is unchanged based on the content of the TOM20 and TIM23 markers (Supplementary data, Figure S1). To investigate heart function, we analyzed *in vivo* cardiac performance by High-frequency Ultrasound imaging system<sup>21</sup> (Figure 6H). Left ventricle systolic volume (Vols) is slightly higher in P2X7R-KO mice (Figure 6I), while left ventricle diastolic volume (Vold) is lower (Figure 6J), but differences do not reach statistical significance. More interestingly, four basic heart indexes are significantly lower in P2X7R-KO versus WT mice: SV (Figure 6K), FS (Figure 6L), EF (Figure 6M), and CO (Figure 6N).

A decreased cardiac function is anticipated to have a negative impact on physical fitness, therefore we verified whether P2X7R-KO mice had a reduced performance in a rotarod wheel test. As shown in Figure 7A, P2X7R-KO mice spend significantly less time on the wheel compared to P2X7R-WT. Finally we anticipated that body temperature homeostasis might be impaired in P2X7R-KO mice due to mitochondrial dysfunction. This prediction is fulfilled as average resting body temperature measured with an infrared camera is significantly lower in P2X7R-KO versus P2X7R-WT mice (Figure 7B and C).

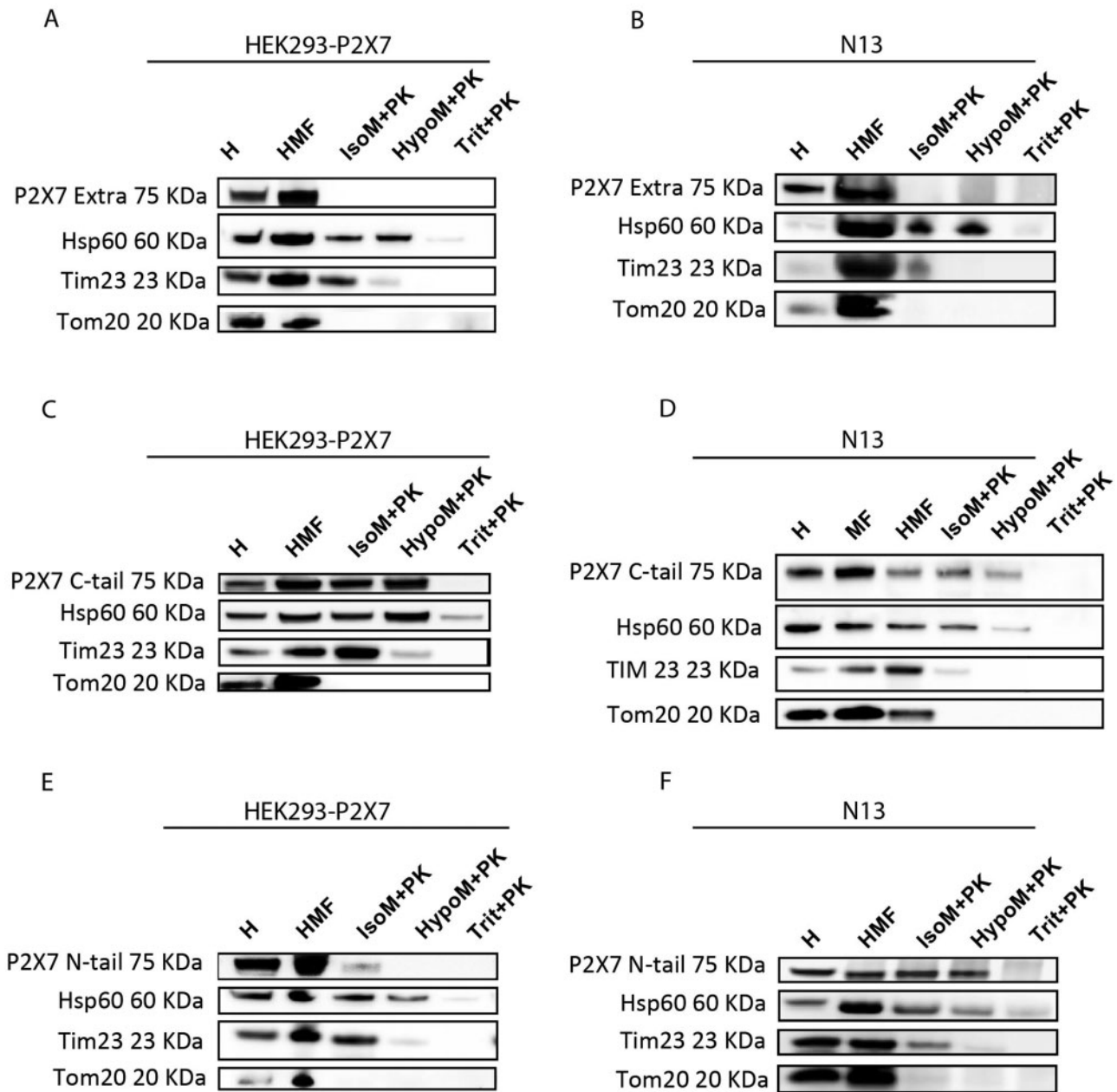
## Discussion

ATP is released into the extracellular space mainly during inflammation and muscle contraction.<sup>2,12</sup> In these conditions, extracellular ATP, acting at plasma membrane P2YRs and P2XRs,



**Figure 3.** The P2X7R Localizes to the Mitochondria. Western Blot analysis of lysates (10  $\mu$ g of protein/lane) from whole cells (H), a crude MF or a HMF. Cytosolic fraction (C) was loaded as control. Cell fractionation was performed as described in Materials and Methods. IP3R3,  $\beta$ -tubulin, and mitochondrial calcium uniporter (MCU) were used as markers of ER, cytosol, and mitochondria, respectively.





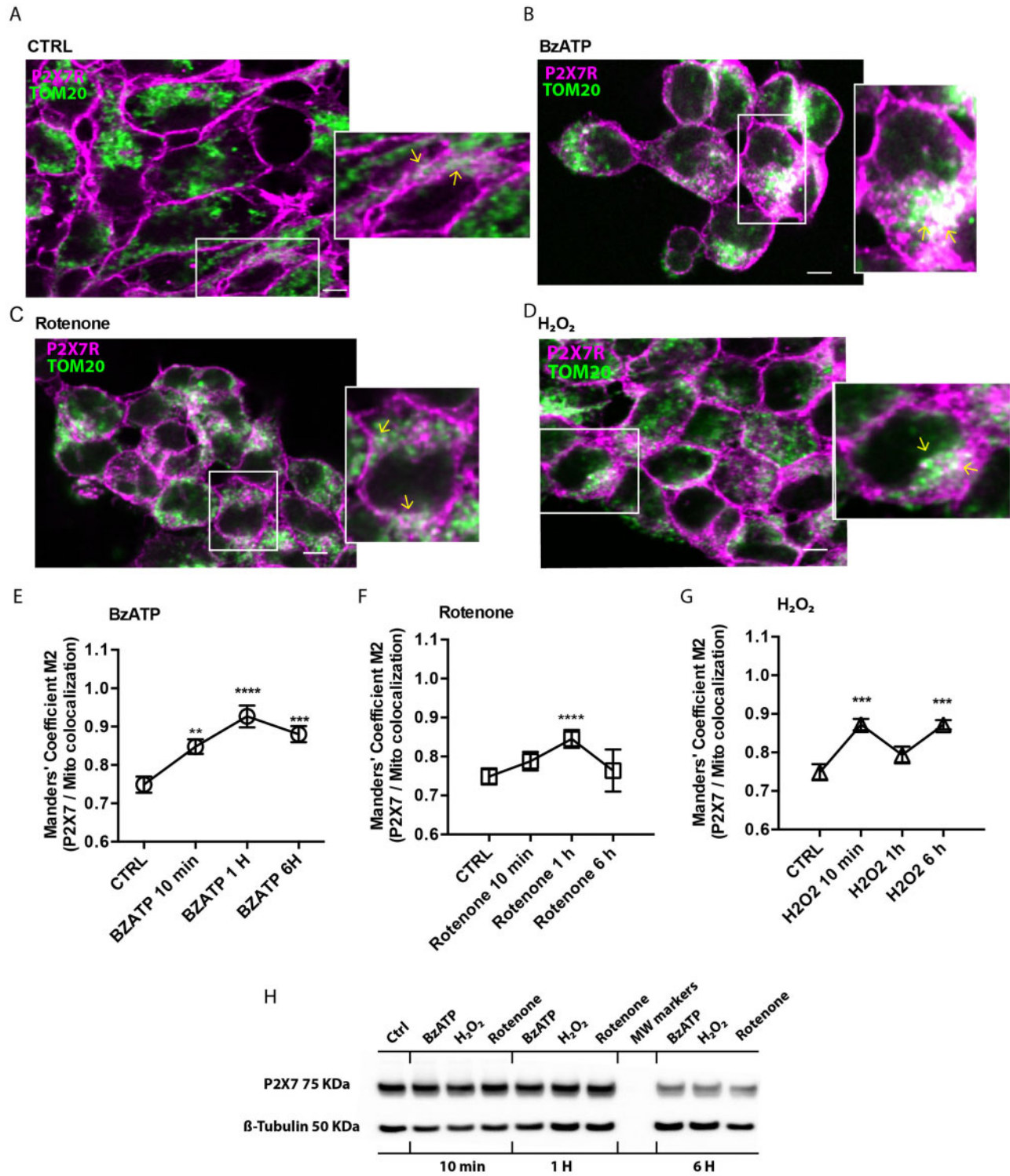
**Figure 4.** The P2X7R Localizes to the Outer Mitochondrial Membrane. Western Blot analysis of a HMF from HEK293-P2X7R or N13 WT exposed to PK (100  $\mu$ g/mL) in iso- (IsoM) or hypo- (HypoM) osmotic buffer and stained with antibodies raised against the extracellular (A, B), the C-terminal (C, D) or N-terminal (E, F) domains of the P2X7 subunit. H, whole-cell lysate; IsoM+PK, MF incubated in iso-osmotic medium-plus PK; HypoM+PK, MF incubated in hypo-osmotic medium plus PK. Trit+PK, MF incubated in Triton-X100-supplemented medium-plus PK. Hsp60, TIM23, and TOM20 were used as markers of mitochondrial matrix, inner and outer mitochondrial membrane, respectively.

promotes immune cell recruitment, release of inflammatory cytokines, endothelial cell activation, and vasodilatation.<sup>5,34</sup>

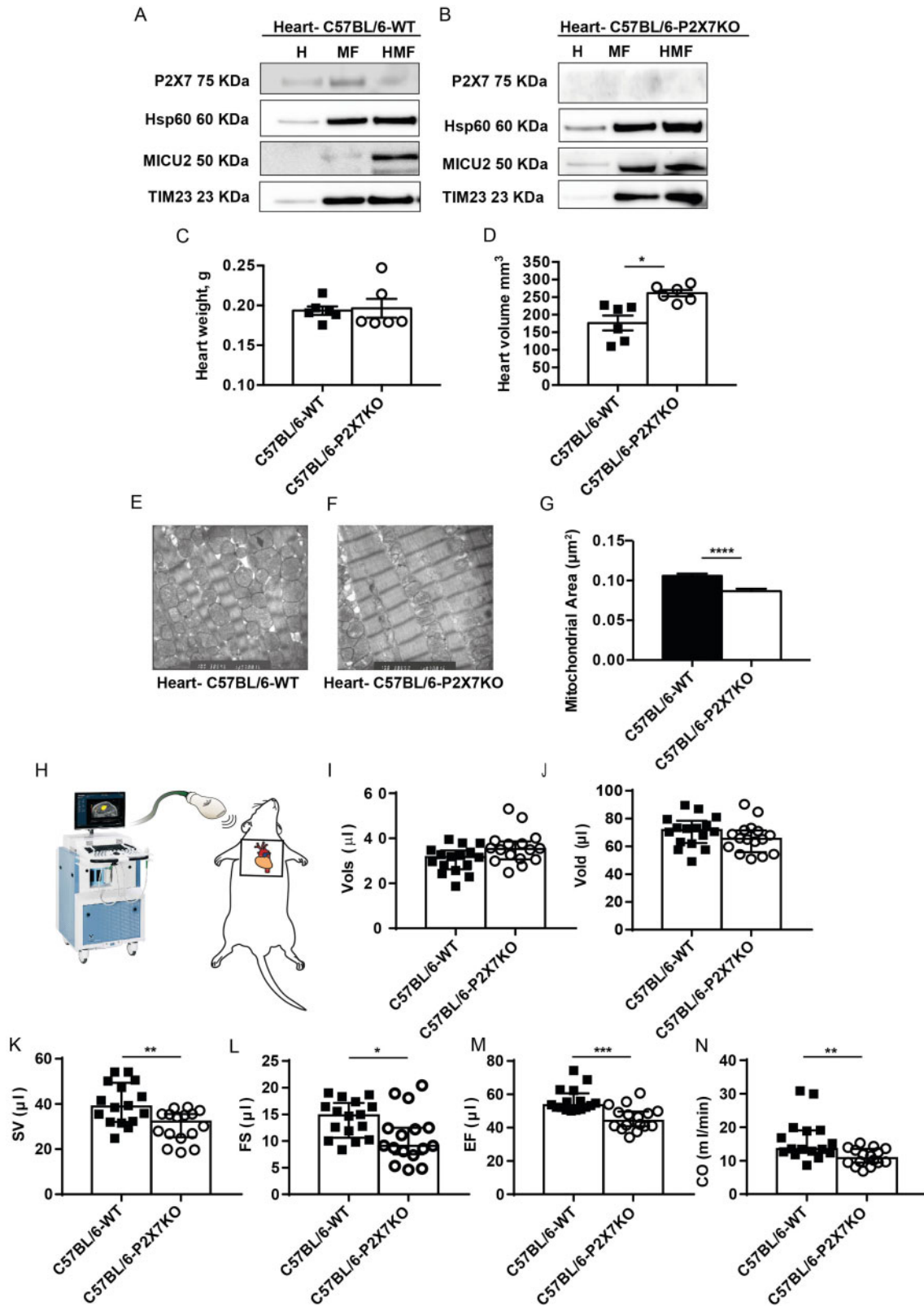
The P2X7R subtype is known for its pro-inflammatory and cytotoxic activity, but paradoxically also for its trophic effect on energy metabolism when stimulated by low agonist concentrations.<sup>35</sup> While the mechanism of P2X7R-mediated cytotoxic activity has been extensively investigated,<sup>36</sup> the molecular basis of the trophic effect is as yet poorly known. Several years ago we showed that tonic stimulation of the P2X7R increases the  $\text{Ca}^{2+}$  concentration of the mitochondrial matrix, supports mitochondrial metabolism, and increases intracellular ATP content.<sup>10</sup> These studies complemented earlier findings again from

our laboratory showing that the P2X7R, contrary to the general opinion, is not simply a cytotoxic receptor but rather a “dual function” receptor, depending on the level of activation and the metabolic state of the target cell.<sup>35,37</sup> Trophic, growth-promoting activity of the P2X7R has been now demonstrated in several *in vitro* and *in vivo* systems.<sup>6,38</sup> Furthermore, accruing indirect evidence supports the view that the P2X7R modulates cell and whole-body energy homeostasis being involved in dysmetabolisms, obesity, and hormonal dysfunctions.<sup>14,39–41</sup> A cardioprotective activity for the P2X7R has also been proposed.<sup>42</sup>

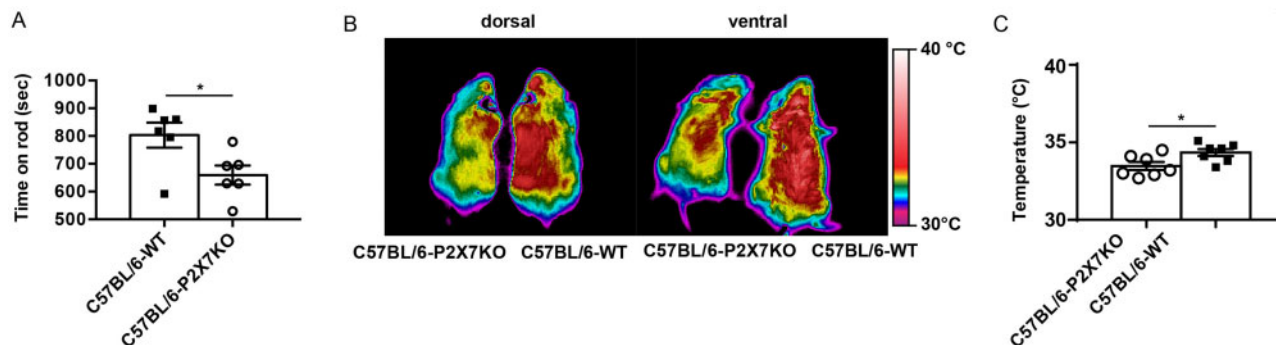
Participation in energy homeostasis is intriguing since the only (so far) *bona fide* physiological agonist of the P2X7R is ATP,



**Figure 5.** Confocal Microscopy Analysis of P2X7R Localization. HEK293-P2X7R cells were plated on sterilized glass coverslips in 24-well plate, at a density of 5000 cells/well in DMEM-F12 medium, and left either untreated (A), or challenged with BzATP (B, E), rotenone (C, F) or H<sub>2</sub>O<sub>2</sub> (D, G). After 1 h (BzATP or rotenone) or 10 min (H<sub>2</sub>O<sub>2</sub>) cells were fixed and stained with anti TOM20 (green) and anti P2X7R (fuchsia) antibodies. A magnification of the selected region is shown in the inset. Areas of co-localization (yellow arrow) are shown in white. Ten random fields from three independent experiments were analyzed. Graphs (E - G) report quantitation of P2X7R/mitochondria localization with the Manders colocalization coefficient (expressed as percentage of P2X7R signal overlapping with TOM20 marker). Scale bar = 10 μm. Total P2X7R content by Western Blot under the different experimental conditions and at different time points is shown in (H). Exact averages ± SEM for Panels E-G are shown in [Supplementary data, Table S2](#). P-values are calculated with the two-tailed unpaired Student's t-test. \*P < 0.05; \*\*P < 0.01; \*\*\*P < 0.001.



**Figure 6.** Lack of the P2X7R Impairs Cardiac Function. Purified heart MFs and HMFs (see Materials and Methods) from WT (A) or P2X7R-KO (B) C57BL/6 mice were analyzed for P2X7R expression by Western Blot. Hsp60, TIM23, and mitochondrial calcium uptake protein 2 (MICU2) were used as markers of mitochondrial matrix, inner or outer mitochondrial membrane, respectively. Excised whole hearts from P2X7R WT (average weight  $g \pm SEM = 0.1935 \pm 0.005343$ ,  $n = 6$ ) or P2X7R-KO (average weight  $g \pm SEM = 0.1965 \pm 0.01169$ ,  $n = 6$ ) mice were weighed (C), measured by caliper to assess volume (average volume  $mm^3 \pm SEM$  P2X7R WT =  $176.5 \pm 21.20$ ,  $n = 6$ ; average volume  $mm^3 \pm SEM$  P2X7R-KO =  $261.3 \pm 9.229$ ,  $n = 6$ ) (D), and analyzed by TEM (E-G). Mitochondrial area ( $\mu m^2$ ) is expressed as average  $\pm SEM$  for WT ( $0.1059 \pm 0.002917$ ,  $n = 289$ ) versus P2X7R-KO ( $0.08657 \pm 0.003239$ ,  $n = 253$ ) (G). *In vivo* heart indexes were measured with the High-frequency Ultrasound imaging system (see Materials and Methods) shown in (H). Vols (I); Vold (J); SV (K); FS (L); EF (M); CO (N). Heart rate was  $399 \pm 17$  and  $375 \pm 16$  for WT and P2X7R-KO mice, respectively. Data are presented as average  $\pm SEM$  of  $n = 16$  mice for condition; \* $P < 0.05$ ; \*\* $P < 0.01$ ; \*\*\* $P < 0.001$ ; \*\*\*\* $P < 0.0001$ .



**Figure 7.** Lack of the P2X7R Reduces Physical Fitness and Surface Body Temperature. Physical fitness (A) of C57BL/6 P2X7 WT and KO mice was investigated in a standard rotarod test by measuring time (s) spent on the wheel, as described in Materials and Methods. Data are presented as average  $\pm$  SEM for WT ( $803.3 \pm 44.74$ ,  $n = 6$ ) and P2X7R-KO mice ( $659.3 \pm 34.45$ ,  $n = 6$ ). For body temperature measurement (B, C), WT and P2X7R-KO mice were placed on a warm surface in a  $22^{\circ}\text{C}$  heated room, and body images were acquired and measured with a Thermacam P25 Infrared Camera. Representative thermal images from one WT (right) and one P2X7R-KO (left) mouse from dorsal or ventral view (B). Each temperature measurement was performed in triplicate in a total of seven mice for condition. Data are presented as average  $^{\circ}\text{C} \pm$  SEM for P2X7R-KO ( $33.37 \pm 0.2607$ ,  $n = 7$ ) and WT ( $34.4 \pm 0.226$ ,  $n = 7$ ) mice. P-values are calculated with the two-tailed unpaired Student's t-test. \*  $P < 0.05$ .

that is, the universal fundamental intermediate in biological energy transactions. Ample evidence shows that ATP is released via non-lytic mechanisms and accumulates into the extracellular space at sites of trauma or inflammation.<sup>43</sup> The P2X7R itself has a leading role in setting extracellular ATP levels since it has been shown that this receptor may serve as a conduit for ATP release.<sup>44,45</sup> This is not surprising as the P2X7R macropore has a molecular cut-off of  $\sim 900$  Da, sufficient to allow permeation of a highly hydrophilic molecule of molecular mass of 507 such as ATP. Thus, it appears that the P2X7R has a very intricate relationship with its own agonist because on one hand it promotes ATP synthesis and transport across the plasma membrane, and on the other is a target of ATP. This intimate reciprocal relationship seems very logical in light of the pathophysiological implications of ATP accumulation into the extracellular space under a variety of conditions requiring an active energy metabolism. For example, ATP accumulates into the interstitium of exercising muscles,<sup>12</sup> therefore stimulation of muscle cell P2X7R may support muscle metabolism under stress. Even more interesting in light of its role in inflammation, is P2X7R ability to “sense” ATP levels at inflammatory sites and promote a whole range of defensive responses requiring an increased energy metabolism, such as chemotaxis, phagocytosis, release of cytolytic granules, and generation of ROS.<sup>5</sup> In this regard, the well-known low affinity of the P2X7R for ATP is of advantage because the intracellular ATP-synthetic machinery will be stimulated only when a large amount of ATP accumulates into tissue interstitium, that is, under stress conditions when intracellular energy stores are depleted and a boost to energy synthesis is needed.

Controlled activation of the P2X7R might in principle support mitochondrial ATP synthesis in different ways, for example, by increasing fatty acid oxidation,<sup>41</sup> by facilitating glucose uptake and consumption,<sup>46</sup> or by increasing mitochondrial  $\text{Ca}^{2+}$  levels and thus stimulating dehydrogenase activity.<sup>25</sup> We previously hypothesized that basal activation of the P2X7R might increase basal cytoplasmic  $\text{Ca}^{2+}$  levels, and thus raise mitochondrial matrix  $\text{Ca}^{2+}$ . This hypothesis should be mitigated in the light of the present data suggesting that a higher mitochondrial potential due to stimulation of Complex I activity is mainly responsible for the higher matrix  $\text{Ca}^{2+}$  observed in P2X7R-proficient cells. Thus, the P2X7R supports OxPhos in multiple ways, for example, by increasing Complex I activity, mitochondrial potential, and matrix  $\text{Ca}^{2+}$ , which in turn stimulates mitochondrial dehydrogenases.<sup>25</sup> Complex II expression is also affected by lack of

P2X7R, but in opposite ways in HEK293 versus N13 R cells. In HEK293 cells, transfection with the P2X7R down-modulates Complex II expression, while in N13 R versus N13 WT cells Complex II expression is unchanged or at best slightly decreased. Down-modulation of Complex II in HEK293-P2X7R cells might be a side effect of forced P2X7R overexpression since it is not observed in cells natively expressing the P2X7R. A major role of NADH oxidase defective activity as a cause of reduced mitochondrial metabolic efficiency in P2X7R-less cells is supported by the observation that supplementation of methylsuccinate, a membrane-permeant substrate that bypasses Site I of the respiratory chain and feeds directly into Site II, restores near-normal mitochondrial membrane potential.

Effect of P2X7R on NADH oxidase might be simply indirect, but based on the present data, might also be directly mediated by P2X7R mitochondrial localization, and therefore be more intimately involved in the modulation of mitochondrial physiology. Although the P2X7R is generally considered a plasma membrane channel, previous anecdotal evidence shows that it also localizes to phagosomes,<sup>27</sup> and the nuclear membrane.<sup>26</sup> The physiological function of intracellular P2X7R has never been investigated, with the exception of the phagosomal localization which has been implicated in killing of phagocytosed pathogens by facilitating fusion of early phagosomes with lysosomes.<sup>47</sup> The discovery that the P2X7R is present on the mitochondria adds further complexity to the intracellular physiology of P2X7R.

Localization of the P2X7 subunit to the mitochondria in the present work was probed with three different antibodies raised against the N-terminal, the central region (extracellular loop) and the C-terminal domain of the receptor. We used both a MF obtained with the standard fractionation procedure, and a HMF, to avoid always possible sources of contamination by intracellular organelles or the plasma membrane. Use of antibodies raised against different domains of the receptor revealed that the P2X7 subunit localizes to the outer mitochondrial membrane and allowed a tentative resolution of the membrane topology. Abolition of staining with the anti-middle domain antibody by PK treatment under isosmotic conditions suggests that the middle bulky domain faces the cytoplasm, while the N- and C-termini face the inter-membrane space. Under hypo-osmotic conditions, the N- and C-termini are still partially protected from proteolysis, an effect that might be due to the tight association of these two residues with phospholipid bilayer.<sup>28</sup> This membrane topology raises several intriguing questions.

The P2X7R is a cation-selective, ATP-activated channel that when expressed on the plasma membrane faces the extracellular space with the bulky, central, domain, while N- and C-termini face the cytoplasm.<sup>48,49</sup> The middle domain also contains the ATP-binding sites. Therefore, ATP-binding sites in mitochondrial P2X7R face the ATP-rich cell cytoplasm. Assuming that P2X7 monomers assemble on the outer mitochondrial membrane to form a functioning P2X7R, the receptor should be constitutively activated by cytoplasmic ATP, and therefore constantly short-circuit cations across the outer mitochondrial membrane. This should not substantially alter mitochondrial energetics since it is well known that the outer mitochondrial membrane is freely permeable to small ions, but raises the question of the physiological meaning of such a pathway. On the other hand, it might well be that P2X7 subunits do not assemble into a functioning receptor, but again the meaning of these hypothetically “silent” monomers is unknown. Our data show that P2X7R expression besides improving mitochondrial metabolism also increases mitochondria size and thickness of the mitochondrial network (see also<sup>10</sup>). These effects might be unrelated to P2X7R channel function and rather be dependent on a specific (but as yet unknown) structural activity of the isolated subunits. Mitochondria undergo constant fission and fusion regulated by diverse proteins selectively responsible for fission/fusion of the outer or inner mitochondrial membrane.<sup>50</sup> While the structure of these proteins is well known, the mechanism of mitochondrial fission/fusion is unclear. At the cell level, the P2X7R has been implicated in plasma membrane fusion,<sup>51,52</sup> thus a similar role could be hypothesized in the outer mitochondrial membrane, but this is utterly speculative at this stage.

Although several mechanistic details are still missing, the effect of P2X7R depletion on *in vivo* performance is dramatic. We investigated the effect of P2X7R depletion in cardiac function, as the heart is heavily dependent on mitochondrial metabolism. Cardiac mitochondria are smaller while heart volume is larger in P2X7R deficient versus proficient mice. More importantly, basic cardiac parameters (SV, EF, CO, and FS) and physical performance (rotarod test) are significantly lower in the absence of the P2X7R. Interestingly, surface body temperature is also lower in the P2X7R-deleted mice. Cardiac indexes in P2X7R-deleted mice are highly reminiscent of the clinical findings observed in patients affected by dilated cardiomyopathy. This is not surprising as dilated cardiomyopathy is a typical manifestation of mitochondrial disease.<sup>53</sup>

Involvement of the P2X7R in heart dysfunction is at present very speculative. A loss-of-function mutation in the P2RX7 gene (556C>A) has been recently found to associate with hypertrophic cardiomyopathy in a family from India,<sup>54</sup> but another study found no association between two P2RX7 SNPs, the gain of function 489C>T and the loss-of-function 1513A>C, and acute heart failure in a geriatric population.<sup>55</sup> Despite this contrasting evidence, our study highlights an as yet un-described function of the P2X7R in the regulation of mitochondrial metabolism and points to a potentially relevant role in cardiac function and physical fitness.

## Supplementary Material

Supplementary material is available at the APS Function online.

## Funding

F.D.V. was supported by the Italian Association for Cancer Research (AIRC) grants n. IG 13025, IG 18581, and IG 22883;

the Ministry of University and Research of Italy, PRIN 2017 grant n. 8YTNWC, and funds from the University of Ferrara. P.P. was supported by AIRC, grant IG-23670; Telethon, grant GGP11139B; the Ministry of University and Research of Italy, PRIN 2017 grant n. E5L5P3. C.G. was supported by grant AIRC IG-19803; the Italian Ministry of Health, grant GR-2013-02356747; by a Fondazione Cariplo grant; by the European Research Council, ERC, 853057—InflaPML; the Ministry of University and Research of Italy, PRIN 2017 grant n. 7E9EPY.

## Conflict of Interests

F.D.V. is a member of the Scientific Advisory Board of Biosceptre Ltd, a UK-based Biotech involved in the development of P2X7-targeted therapeutic antibodies. Other authors declare no competing interest.

## Authors' Contributions

A.C.S. participated in study design, performed most of the experiments, analyzed data, and revised the manuscript. V.V.-P., S.F., S.M., A.L.G., and M.B. participated in most of the experiments and revised the manuscript. P.B. was responsible for electron microscopy. F.F., N.D.L., and C.K. performed mouse ultrasound examination of mice hearts. A.S. participated in data analysis and interpretation, and revised the manuscript. S.N. and M.M. performed rotarod tests and revised the manuscript. M.R. performed infrared thermal imaging. M.R.W. participated in Seahorse analysis and helped in fractionation studies. C.G. and P.P. participated in study design and in data analysis, and revised the manuscript. F.D.V. conceived the study, designed most of the experiments, analyzed data, and wrote the manuscript.

## Data Availability

All data generated or analyzed during this study are included in this published article and its [supplementary information](#) files, or are available from the corresponding author upon reasonable request.

## References

1. Burnstock G. Purinergic signalling: from discovery to current developments. *Exp Physiol* 2014;99(1):16–34. doi:10.1113/expphysiol.2013.071951.
2. Bours MJ, Swennen EL, Di Virgilio F, Cronstein BN, Dagnelie PC. Adenosine 5'-triphosphate and adenosine as endogenous signaling molecules in immunity and inflammation. *Pharmacol Ther* 2006;112(2):358–404. doi:10.1016/j.pharmthera.2005.04.013.
3. Bours MJ, Dagnelie PC, Giuliani AL, Wesselius A, Di Virgilio F. P2 receptors and extracellular ATP: a novel homeostatic pathway in inflammation. *Front Biosci* 2011;3:1443–1456. doi:10.2741/235.
4. Burnstock G. Pathophysiology and therapeutic potential of purinergic signaling. *Pharmacol Rev* 2006;58(1):58–86. doi:10.1124/pr.58.1.5.
5. Di Virgilio F, Dal Ben D, Sarti AC, Giuliani A L, Falzoni S. The P2X7 receptor in infection and inflammation. *Immunity* 2017; 47(1):15–31. doi:10.1016/j.immuni.2017.06.020.
6. Di Virgilio F, Sarti AC, Falzoni S, De Marchi E, Adinolfi E. Extracellular ATP and P2 purinergic signalling in the tumour

- microenvironment. *Nat Rev Cancer* 2018;18(10):601–618. doi:10.1038/s41568-018-0037-0.
7. Di Virgilio F. The therapeutic potential of modifying inflammasomes and NOD-like receptors. *Pharmacol Rev* 2013;65(3):872–905. doi:10.1124/pr.112.006171.
  8. Di Virgilio F, Adinolfi E. Extracellular purines, purinergic receptors and tumor growth. *Oncogene* 2016;36(3):293–303. doi:10.1038/onc.2016.206.
  9. Di Virgilio F, Bronte V, Collavo D, Zanovello P. Responses of mouse lymphocytes to extracellular adenosine 5'-triphosphate (ATP). Lymphocytes with cytotoxic activity are resistant to the permeabilizing effects of ATP. *J Immunol* 1989;143(6):1955–1960.
  10. Adinolfi E, Callegari MG, Ferrari D, et al. Basal activation of the P2X7 ATP receptor elevates mitochondrial calcium and potential, increases cellular ATP levels, and promotes serum-independent growth. *Mol Biol Cell* 2005;16(7):3260–3272. doi:10.1091/mbc.E04-11-1025.
  11. Amoroso F, Falzoni S, Adinolfi E, Ferrari D, Di Virgilio F. The P2X7 receptor is a key modulator of aerobic glycolysis. *Cell Death Dis* 2012;3(8):e370. doi:10.1038/cddis.2012.105.
  12. Forrester, T. Release of adenosine triphosphate from active skeletal muscle. *J Physiol* 1966;186:107–109.
  13. Wilhelm K, Ganesan J, Müller T et al. Graft-versus-host disease is enhanced by extracellular ATP activating P2X7R. *Nat Med* 2010;16(12):1434–1438. doi:10.1038/nm.2242.
  14. Giacobuzzo G, Fabbriozzi P, Apolloni S, Coccorello R, Volonte C. Stimulation of P2X7 enhances whole body energy metabolism in mice. *Front Cell Neurosci* 2019;13:390. doi:10.3389/fncel.2019.00390.
  15. Ferrari D, Villalba M, Chiozzi P, Falzoni S, Ricciardi-Castagnoli P, Di Virgilio F. Mouse microglial cells express a plasma membrane pore gated by extracellular ATP. *Journal of immunology*. 1996;156(4):1531–9.
  16. Missiroli, S, Bonora M, Patergnani S et al. PML at mitochondria-associated membranes is critical for the repression of autophagy and cancer development. *Cell Rep* 2016;16(9):2415–2427. doi:10.1016/j.celrep.2016.07.082.
  17. Chen TW, Wardill TJ, Sun Y et al. Ultrasensitive fluorescent proteins for imaging neuronal activity. *Nature* 2013;499:295–300. doi:10.1038/nature12354.
  18. Wieckowski MR, Giorgi C, Lebedzinska M, Duszyński J, Pinton P. Isolation of mitochondria-associated membranes and mitochondria from animal tissues and cells. *Nat Protoc* 2009;4(11):1582–1590. doi:10.1038/nprot.2009.151.
  19. Reynolds ES. The use of lead citrate at high pH as an electron-opaque stain in electron microscopy. *J Cell Biol* 1963;17(1):208–212. doi:10.1083/jcb.17.1.208.
  20. Rossato, M, Granzotto M, Macchi V et al. Human white adipocytes express the cold receptor TRPM8 which activation induces UCP1 expression, mitochondrial activation and heat production. *Mol Cell Endocrinol* 2014;383(1-2):137–146. doi:10.1016/j.mce.2013.12.005.
  21. Di Lascio N, Stea F, Kusmic C, Sicari R, Fajta F. Non-invasive assessment of pulse wave velocity in mice by means of ultrasound images. *Atherosclerosis* 2014;237(1):31–37. doi:10.1016/j.atherosclerosis.2014.08.033.
  22. Gao S, Ho D, Vatner DE, Vatner SF. Echocardiography in mice. *Curr Protoc Mouse Biol* 2011;1:71–83. doi:10.1002/9780470942390.mo100130.
  23. Rozas G, Labandeira Garcia JL. Drug-free evaluation of rat models of parkinsonism and nigral grafts using a new automated rotarod test. *Brain Res* 1997;749:188–199. doi:10.1016/S0006-8993(96)01162-6.
  24. Viaro R, Sanchez-Pernaute R, Marti M et al. Nociceptin/orphanin FQ receptor blockade attenuates MPTP-induced parkinsonism. *Neurobiol Dis* 2008;30(3):430–438. doi:10.1016/j.nbd.2008.02.011.
  25. Griffiths EJ, Rutter GA. Mitochondrial calcium as a key regulator of mitochondrial ATP production in mammalian cells. *Biochim Biophys Acta* 2009;1787(11):1324–1333. doi:10.1016/j.bbabi.2009.01.019.
  26. Atkinson L, Milligan CJ, Buckley NJ, Deuchars J. An ATP-gated ion channel at the cell nucleus. *Nature* 2002;420(6911):42. doi:10.1038/420042a.
  27. Kuehnelt MP, Rybin V, Anand PK, Anes E, Griffiths G. Lipids regulate P2X7-receptor-dependent actin assembly by phagosomes via ADP translocation and ATP synthesis in the phagosomal lumen. *J Cell Sci* 2009;122(Pt4):499–504. doi:10.1242/jcs.034199.
  28. Gonnord P, Delarasse C, Auger R et al. Palmitoylation of the P2X7 receptor, an ATP-gated channel, controls its expression and association with lipid rafts. *FASEB J* 2009;23(3):795–805. doi:10.1096/fj.08-114637.
  29. Karasawa A, Michalski K, Mikhelzon P, Kawate T. The P2X7 receptor forms a dye-permeable pore independent of its intracellular domain but dependent on membrane lipid composition. *Elife* 2017;6:e31186. doi:10.7554/eLife.31186.
  30. Solle, M, Labasi J, Perregaux DG et al. Altered cytokine production in mice lacking P2X(7) receptors. *J Biol Chem* 2001;276(1):125–132. doi:10.1074/jbc.M006781200.
  31. Hubert, S, Rissiek B, Klages 32K et al. Extracellular NAD<sup>+</sup> shapes the Foxp3<sup>+</sup> regulatory T cell compartment through the ART2-P2X7 pathway. *J Exp Med* 2010;207(12):2561–2568. doi:10.1084/jem.20091154.
  32. Karmakar M, Katsnelson MA, Dubyak GR, Pearlman E. Neutrophil P2X7 receptors mediate NLRP3 inflammasome-dependent IL-1 $\beta$  secretion in response to ATP. *Nat Commun* 2016;7:10555. doi:10.1038/ncomms10555.
  33. Borges da Silva H, Beura LK, Wang H et al. The purinergic receptor P2RX7 directs metabolic fitness of long-lived memory CD8(+) T cells. *Nature* 2018;559(7713):264–268. doi:10.1038/s41586-018-0282-0.
  34. Burnstock, G. Purinergic signaling in the cardiovascular system. *Circ Res* 2017;120(1):207–228. doi:10.1161/CIRCRESAHA.116.309726.
  35. Baricordi OR, Melchiorri L, Adinolfi E et al. Increased proliferation rate of lymphoid cells transfected with the P2X(7) ATP receptor. *J Biol Chem* 1999;274(47):33206–33208. doi:10.1074/jbc.274.47.33206.
  36. Di Virgilio, F, Chiozzi P, Falzoni S et al. Cytolytic P2X purinoreceptors. *Cell Death Differ* 1998;5(3):191–199. doi:10.1038/sj.cdd.4400341.
  37. Di Virgilio F, Ferrari D, Adinolfi E. P2X(7): a growth-promoting receptor-implications for cancer. *Purinergic Signal* 2009;5(2):251–256. doi:10.1007/s11302-009-9145-3.
  38. Lara, R, Adinolfi E, Harwood CA, et al. P2X7 in cancer: from molecular mechanisms to therapeutics. *Front Pharmacol* 2020;11:793. doi:10.3389/fphar.2020.00793.
  39. Novak I, Solini A. P2X receptor-ion channels in the inflammatory response in adipose tissue and pancreas-potential triggers in onset of type 2 diabetes? *Curr Opin Immunol* 2018;52:1–7. doi:10.1016/j.coi.2018.02.002.
  40. Solini A, Novak I. Role of the P2X7 receptor in the pathogenesis of type 2 diabetes and its microvascular complications. *Curr Opin Pharmacol* 2019;47:75–81. doi:10.1016/j.coph.2019.02.009.

41. Giacobazzo G, Apolloni S, Coccarello R. Loss of P2X7 receptor function dampens whole body energy expenditure and fatty acid oxidation. *Purinergic Signal* 2018;14(3):299–305. doi:10.1007/s11302-018-9610-y.
42. Vessey DA, Li L, Kelley M. Pannexin-1/P2X7 purinergic receptor channels mediate the release of cardioprotectants induced by ischemic pre- and postconditioning. *J Cardiovasc Pharmacol Ther* 2010;15(2):190–195. doi:10.1177/1074248409360356.
43. Di Virgilio F, Sarti AC, Coutinho-Silva R. Purinergic signaling, DAMPs, and inflammation. *Am J Physiol Cell Physiol* 2020; 318(5):C832–C835. doi:10.1152/ajpcell.00053.2020.
44. Pellegatti P, Falzoni S, Pinton P, Rizzuto R, Di Virgilio F. A novel recombinant plasma membrane-targeted luciferase reveals a new pathway for ATP secretion. *Mol Biol Cell* 2005; 16(8):3659–3665. doi:10.1091/mbc.e05-03-0222.
45. Suadicani SO, Brosnan CF, Scemes E. P2X7 receptors mediate ATP release and amplification of astrocytic intercellular Ca<sup>2+</sup> signaling. *J Neurosci* 2006;26(5):1378–1385. doi:10.1523/JNEUROSCI.3902-05.2006.
46. Glas, R, Sauter NS, Schulthess FT, Shu, L, Oberholzer, J, Maedler K. Purinergic P2X7 receptors regulate secretion of interleukin-1 receptor antagonist and beta cell function and survival. *Diabetologia* 2009;52(8):1579–1588. doi:10.1007/s00125-009-1349-0.
47. Fairbairn IP, Stober CB, Kumararatne DS, Lammas DA. ATP-mediated killing of intracellular mycobacteria by macrophages is a P2X(7)-dependent process inducing bacterial death by phagosome-lysosome fusion. *J Immunol* 2001;167(6): 3300–3307. doi:10.4049/jimmunol.167.6.3300.
48. North RA, Surprenant A. Pharmacology of cloned P2X receptors. *Annu Rev Pharmacol Toxicol* 2000;40:563–580. doi:10.1146/annurev.pharmtox.40.1.563.
49. Karasawa A, Kawate T. Structural basis for subtype-specific inhibition of the P2X7 receptor. *Elife* 2016;5:e22153. doi:10.7554/eLife.22153.
50. Giacomello M, Pyakurel A, Glytsou C, Scorrano L. The cell biology of mitochondrial membrane dynamics. *Nat Rev Mol Cell Biol* 2020;21(4):204–224.
51. Chiozzi P, Sanz JM, Ferrari D et al. Spontaneous cell fusion in macrophage cultures expressing high levels of the P2Z/P2X7 receptor. *J Cell Biol* 1997;138(3):697–706.
52. Lemaire, I, Falzoni S, Leduc N et al. Involvement of the purinergic P2X7 receptor in the formation of multinucleated giant cells. *J Immunol* 2006;177(10):7257–7265.
53. Meyers DE, Basha HI, Koenig MK. Mitochondrial cardiomyopathy: pathophysiology, diagnosis, and management. *Tex Heart Inst J* 2013;40(4):385–394.
54. Biswas, A, Raza A, Kapoor M et al. Loss of function mutation in the P2X7, a ligand-gated ion channel gene associated with hypertrophic cardiomyopathy. *Purinergic Signal* 2019;15(2): 205–210. doi:10.1007/s11302-019-09660-7
55. Pasqualetti, G, Seghieri M, Santini E et al. P2X7 receptor and APOE polymorphisms and survival from heart failure: a prospective study in frail patients in a geriatric unit. *Aging Dis* 2017;8(4):434–441. doi:10.14336/AD.2016.1202.