

ERRATA

Multicenter Comparison of Roche COBAS AMPLICOR MONITOR Version 1.5, Organon Teknika NucliSens QT with Extractor, and Bayer Quantiplex Version 3.0 for Quantification of Human Immunodeficiency Virus Type 1 RNA in Plasma

DONALD G. MURPHY, LOUISE CÔTÉ, MICHELINE FAUVEL, PIERRE RENÉ,
AND JEAN VINCELETTE

*Laboratoire de Santé Publique du Québec, Sainte-Anne-de-Bellevue, Département de Microbiologie et Immunologie,
Université de Montréal, Centre Universitaire de Santé McGill, Hôpital Royal Victoria, and Centre Hospitalier de
l'Université de Montréal, Hôpital Saint-Luc, Montréal, and Centre Hospitalier de l'Université Laval
du Centre Hospitalier Universitaire de Québec, Sainte-Foy, Québec, Canada*

Volume 38, no. 11, p. 4034–4041, 2000. Page 4036, Table 1: Inter- and intrarun %CV and *n* at site A for stCA MONITOR 1.5 should read “39.3” and “22,” respectively.

Detection of Cattle Naturally Infected with *Anaplasma marginale* in a Region of Endemicity by Nested PCR and a Competitive Enzyme-Linked Immunosorbent Assay Using Recombinant Major Surface Protein 5

SUSANA TORIONI DE ECHAIDE, DONALD P. KNOWLES, TRAVIS C. MCGUIRE,
GUY H. PALMER, CARLOS E. SUAREZ, AND TERRY F. MCELWAIN

*Instituto Nacional de Tecnología Agropecuaria, EEA Rafaela, Rafaela, Santa Fe, Argentina, and
Animal Disease Research Unit, U.S. Department of Agriculture, Agricultural Research
Service, Department of Veterinary Microbiology and Pathology, Washington
State University, and Washington Animal Disease Diagnostic
Laboratory, Pullman, Washington*

Volume 36, no. 3, p. 777–782, 1998. Page 778, column 1, line 25, “5'-GCATAGCCTCCCCCTCTTTC-3'” should read “5'-GCATAGCCTCCGCGTCTTTC-3'.”

Genomic and Phylogenetic Analysis of Hepatitis C Virus Isolates from Argentine Patients: a Six-Year Retrospective Study

J. F. QUARLERI, B. H. ROBERTSON, V. L. MATHET, M. FELD, L. ESPÍNOLA, M. P. REQUEIJO,
O. MANDÓ, G. CARBALLAL, AND J. R. OUBIÑA

*Laboratorio de Hepatitis Virales, Departamento Microbiología, Facultad de Medicina, Universidad de Buenos Aires,
and CEMIC, Buenos Aires, Argentina, and Centers for Disease Control and Prevention, Atlanta, Georgia*

Volume 38, no. 12, p. 4560–4568, 2000. Page 4564, legend to Fig. 3, line 7: The sentence “Numbers in boxes indicate bootstrap values.” should be added.

Page 4565, legend to Fig. 4, line 4: “Shaded boxes” should read “Numbers in boxes.”

Pages 4564 and 4565: Fig. 3 and 4 should appear as shown on the following pages.

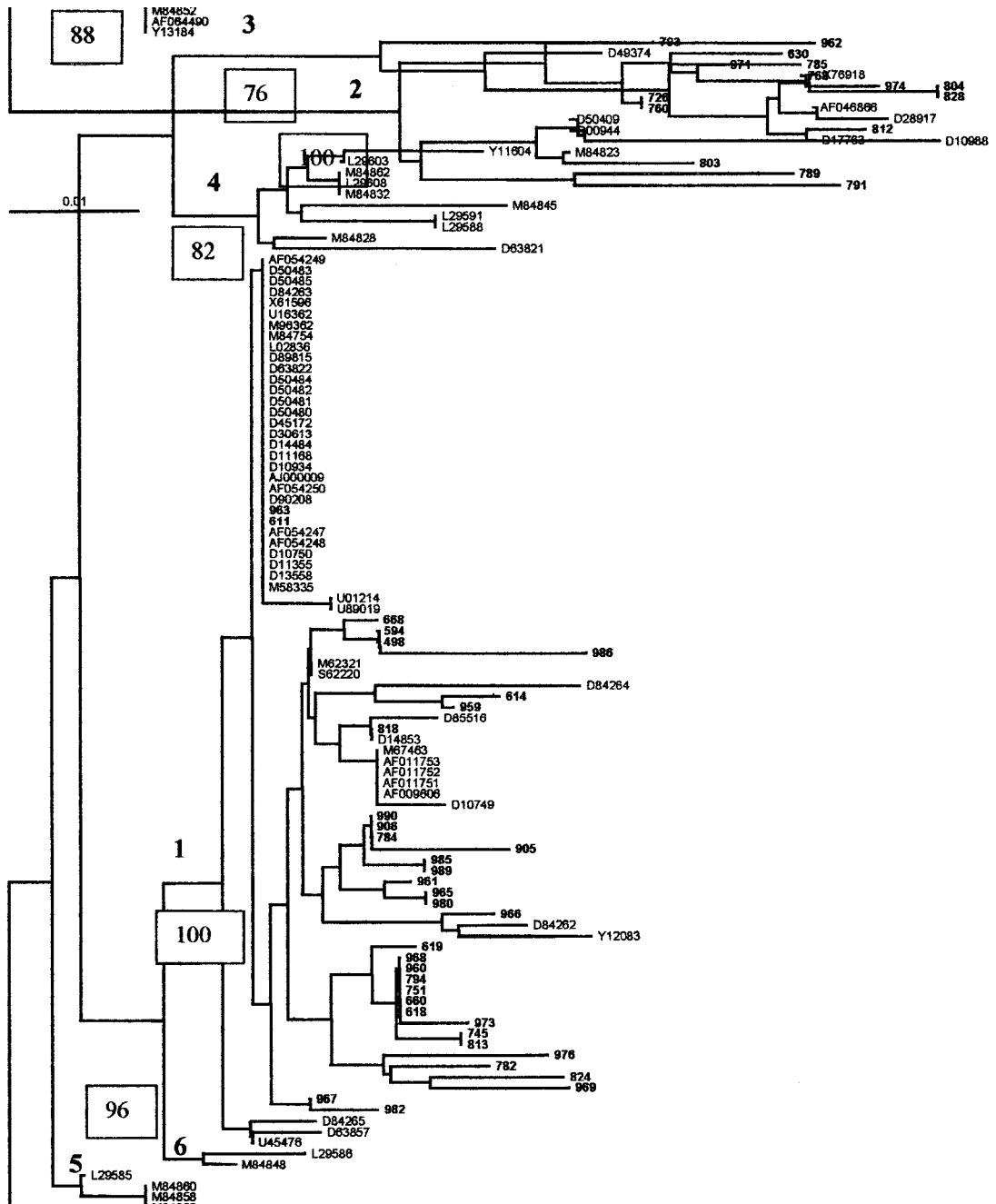


FIG. 3

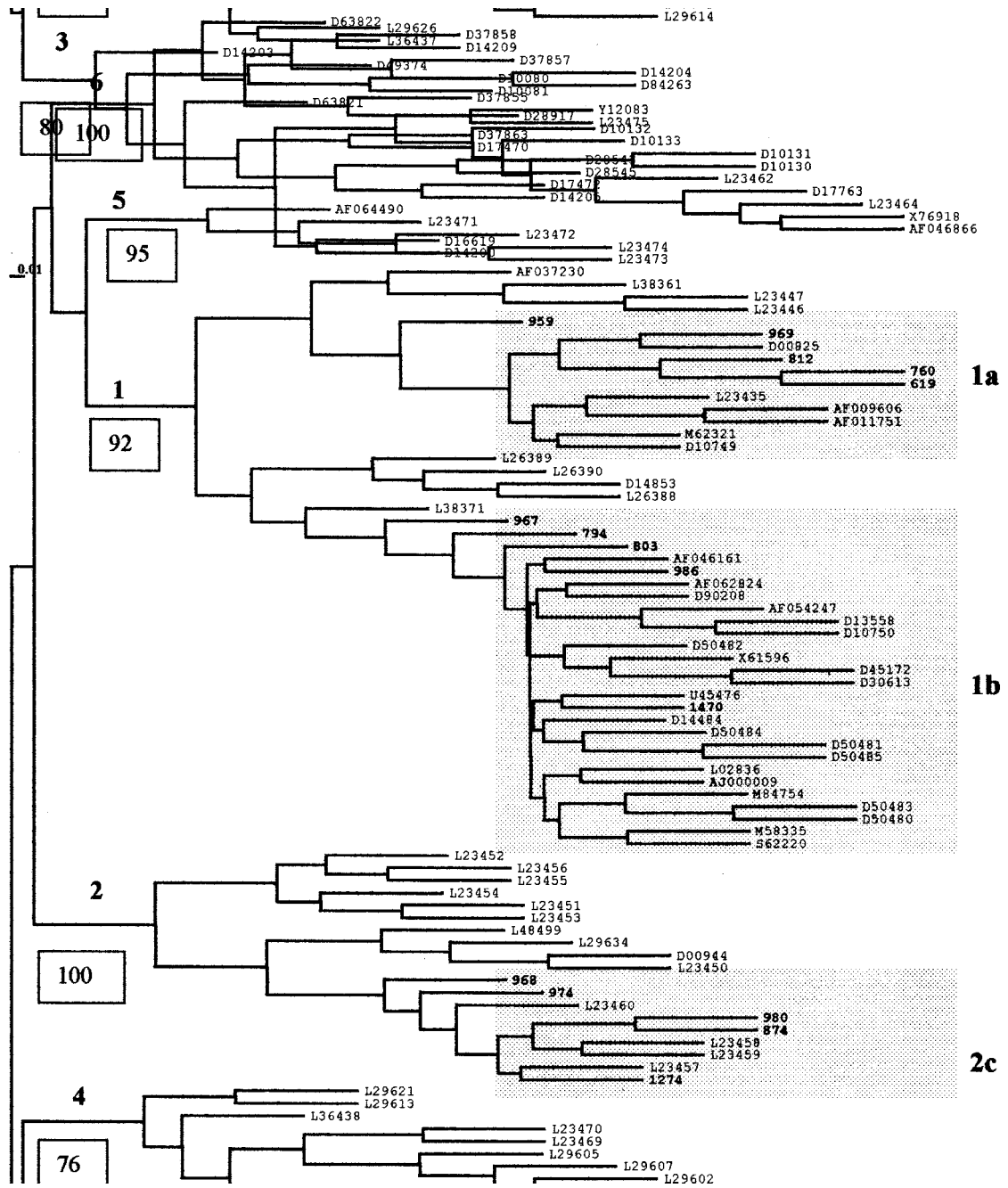


FIG. 4