

# Pandemic preparedness and COVID-19: an exploratory analysis of infection and fatality rates, and contextual factors associated with preparedness in 177 countries, from Jan 1, 2020, to Sept 30, 2021



COVID-19 National Preparedness Collaborators\*



## Summary

**Background** National rates of COVID-19 infection and fatality have varied dramatically since the onset of the pandemic. Understanding the conditions associated with this cross-country variation is essential to guiding investment in more effective preparedness and response for future pandemics.

**Methods** Daily SARS-CoV-2 infections and COVID-19 deaths for 177 countries and territories and 181 subnational locations were extracted from the Institute for Health Metrics and Evaluation's modelling database. Cumulative infection rate and infection-fatality ratio (IFR) were estimated and standardised for environmental, demographic, biological, and economic factors. For infections, we included factors associated with environmental seasonality (measured as the relative risk of pneumonia), population density, gross domestic product (GDP) per capita, proportion of the population living below 100 m, and a proxy for previous exposure to other betacoronaviruses. For IFR, factors were age distribution of the population, mean body-mass index (BMI), exposure to air pollution, smoking rates, the proxy for previous exposure to other betacoronaviruses, population density, age-standardised prevalence of chronic obstructive pulmonary disease and cancer, and GDP per capita. These were standardised using indirect age standardisation and multivariate linear models. Standardised national cumulative infection rates and IFRs were tested for associations with 12 pandemic preparedness indices, seven health-care capacity indicators, and ten other demographic, social, and political conditions using linear regression. To investigate pathways by which important factors might affect infections with SARS-CoV-2, we also assessed the relationship between interpersonal and governmental trust and corruption and changes in mobility patterns and COVID-19 vaccination rates.

**Findings** The factors that explained the most variation in cumulative rates of SARS-CoV-2 infection between Jan 1, 2020, and Sept 30, 2021, included the proportion of the population living below 100 m (5.4% [4.0–7.9] of variation), GDP per capita (4.2% [1.8–6.6] of variation), and the proportion of infections attributable to seasonality (2.1% [95% uncertainty interval 1.7–2.7] of variation). Most cross-country variation in cumulative infection rates could not be explained. The factors that explained the most variation in COVID-19 IFR over the same period were the age profile of the country (46.7% [18.4–67.6] of variation), GDP per capita (3.1% [0.3–8.6] of variation), and national mean BMI (1.1% [0.2–2.6] of variation). 44.4% (29.2–61.7) of cross-national variation in IFR could not be explained. Pandemic-preparedness indices, which aim to measure health security capacity, were not meaningfully associated with standardised infection rates or IFRs. Measures of trust in the government and interpersonal trust, as well as less government corruption, had larger, statistically significant associations with lower standardised infection rates. High levels of government and interpersonal trust, as well as less government corruption, were also associated with higher COVID-19 vaccine coverage among middle-income and high-income countries where vaccine availability was more widespread, and lower corruption was associated with greater reductions in mobility. If these modelled associations were to be causal, an increase in trust of governments such that all countries had societies that attained at least the amount of trust in government or interpersonal trust measured in Denmark, which is in the 75th percentile across these spectrums, might have reduced global infections by 12.9% (5.7–17.8) for government trust and 40.3% (24.3–51.4) for interpersonal trust. Similarly, if all countries had a national BMI equal to or less than that of the 25th percentile, our analysis suggests global standardised IFR would be reduced by 11.1%.

**Interpretation** Efforts to improve pandemic preparedness and response for the next pandemic might benefit from greater investment in risk communication and community engagement strategies to boost the confidence that individuals have in public health guidance. Our results suggest that increasing health promotion for key modifiable risks is associated with a reduction of fatalities in such a scenario.

**Funding** Bill & Melinda Gates Foundation, J Stanton, T Gillespie, J and E Nordstrom, and Bloomberg Philanthropies.

**Copyright** © 2022 The Author(s). Published by Elsevier Ltd. This is an Open Access article under the CC BY 4.0 license.

Lancet 2022; 399: 1489–512

Published Online  
February 1, 2022  
[https://doi.org/10.1016/S0140-6736\(22\)00172-6](https://doi.org/10.1016/S0140-6736(22)00172-6)

See [Comment](#) page 1443

\*Collaborators listed at the end of the paper

Correspondence to:  
Dr Joseph L Dieleman, Institute for Health Metrics and Evaluation, Seattle, WA, USA  
[dieleman@uw.edu](mailto:dieleman@uw.edu)

### Research in context

#### Evidence before this study

Responsive policies such as physical distancing and mask mandates were important in shaping outcomes during the COVID-19 pandemic. Yet, the conditions associated with cross-country variation in infection and fatality rates during the COVID-19 pandemic are not well understood. In the aftermath of the 2013–16 Ebola epidemic in west Africa, WHO launched a voluntary Joint External Evaluation (JEE) process to track adoption of core capacities required under the 2005 International Health Regulations and to assess national capacity to prevent, detect, and respond to disease with potential for pandemic spread. WHO's April 2021 interim assessment did not find JEE scores from the 100 countries that had conducted voluntary assessments to be correlated with COVID-19 outcomes, although such metrics were designed as benchmarking exercises for National Action Plans rather than cross-country comparators. Preliminary analysis of COVID-19 outcomes in relation to other health-system capacity indices, such as the Global Health Security Index and the index of effective coverage of universal health coverage produced by the Global Burden of Diseases, Injuries, and Risk Factors Study (GBD) have also been found not to be predictive of COVID-19 outcomes. Other exploratory research on COVID-19 outcomes has had a regional focus or has focused on a small number of country experiences.

#### Added value of this study

We analysed measures of pandemic preparedness. 12 indicators of preparedness and response and seven indicators of health-system capacity were considered, in addition to ten other demographic, social, and political conditions that previous research suggests might be relevant. Associations with both incidence and mortality from SARS-CoV-2 infections were investigated. We controlled for demographic, biological, economic, and environmental variables associated with

COVID-19 outcomes, including population age structure and environmental seasonality, population density, national income, and population health risks, to identify contextual factors subject to policy control. This research considerably expands on the scope of previous research by investigating correlates of pandemic preparedness and mitigation in 177 countries between Jan 1, 2020, and Sept 30, 2021, and includes inputs that have been adjusted for problems associated with under-reporting of COVID-19 outcomes. This expanded scope was possible because of inputs from COVID-19 research produced by the Institute for Health Metrics and Evaluation and mortality and population estimates generated by GBD.

#### Implications of all the available evidence

The existing metrics for health-system capacity and national pandemic preparedness and response have been poor predictors of pandemic outcomes, suggesting other areas might merit greater weight in future preparedness efforts. Not all of the correlates that account for some variation in infections per capita and infection-to-fatality ratios, such as age structure, altitude at which a population lives, and environmental seasonality, are easy for policy makers to control. Yet, other factors are within the policy realm, including preventive health measures focused on population health fundamentals: encouraging healthy bodyweight and reducing smoking might be helpful in averting morbidity and mortality in future pandemic scenarios. Moreover, the level of trust is something that a government can prepare for and earn in a crisis, and our analysis suggests doing so may be crucial to mount a more effective response to future pandemic threats. Large unexplained variation in differences in SARS-CoV-2 infections across countries speaks to the importance of further research in this area.

### Introduction

While the world remains in the grip of COVID-19, crucial efforts are already underway to begin learning from the pandemic response.<sup>1–3</sup> Policy makers have begun developing new global and national pandemic preparedness proposals to ensure the world is better prepared when the next deadly and fast-spreading novel pathogen emerges.<sup>4–8</sup> Policy responses such as mask mandates and physical-distancing measures have been key to shaping outcomes.<sup>9–11</sup> However, identifying the contextual factors associated with reduced infection and fatality rates is important to guide the long-term path to addressing future threats.

COVID-19 has been called an “epidemiological mystery”.<sup>12</sup> Reported incidence and mortality from SARS-CoV-2 have not followed the pattern of many other communicable diseases; wealthier countries with more health-care resources have had a greater burden from COVID-19 than have low-income countries with fewer health-care resources. Upper-middle-income and high-

income countries have 48% of the global population but 53% of the total estimated excess mortality-adjusted cumulative deaths from COVID-19 as of Sept 30, 2021, despite having much higher COVID-19 vaccination rates since December, 2020, compared with those in low-income and lower-middle-income countries.<sup>13,14</sup> Also, national cumulative mortality rates have varied dramatically, even among countries within close geographical proximity. Bulgaria, Namibia, and Bolivia have COVID-19 mortality rates greater than 4 deaths per 1000 people, whereas geographical neighbours Turkey, Angola, and Colombia, respectively, have fewer than half as many deaths per capita, with mortality rates at or below 2 per 1000. Moreover, countries that experts believed before the pandemic to be most prepared to mitigate the effects of a pandemic have not been the most successful at doing so.<sup>1</sup> A preliminary analysis in June, 2020, examined the Global Health Security (GHS) Index, the WHO Joint External Evaluation (JEE), and a measure of

	Units	Temporal coverage	Spatial coverage	Data source	Notes
<b>Stage 1 covariates</b>					
Pneumonia relative risk	Relative risk of death from pneumonia divided by the average risk of death from pneumonia	2013–19	National and subnational	Modelling COVID-19 scenarios for the USA <sup>34</sup>	Varies weekly
Age	Age structure of the population (5-year age bins)	2020	National and subnational	GBD 2019	..
Altitude	Population living below 100 m (%)	2015	National and subnational	GBD 2019	..
Population density	Population living above 1000 people per km <sup>2</sup> (%)	2020	National and subnational	Modelling COVID-19 scenarios for the USA <sup>34</sup>	..
Air pollution	PM <sub>2.5</sub> air pollution concentration (mg/m <sup>3</sup> )	2019	National and subnational	GBD 2019	..
Smoking prevalence	Age-standardised tobacco smoking prevalence	2019	National and subnational	GBD 2019	..
Cancer prevalence	Age-standardised cancer prevalence	2019	National and subnational	GBD 2019	..
COPD prevalence	Age-standardised COPD prevalence	2019	National and subnational	GBD 2019	..
Bats	Average number of betacoronavirus-host bat species in a given location	2021 bats and ranges	National only	IUCN and Verena Consortium	See appendix (p 44) for more details of methodology
Gross domestic product per capita	2019 US\$	2019	National and subnational	GBD 2019	..
BMI	Population-adjusted BMI	2019	National and subnational	GBD 2019	..
<b>Stage 2 covariates</b>					
JEE components and Prevent Epidemics' Preparedness overall score	Index	2016–21	National only	WHO and Prevent Epidemics	Only places that have completed a JEE; overall score is a summary variable of JEE components created by Prevent Epidemics
Global Health Security Index components and overall score	Index	2019	National only	Global Health Security Index 2019	Weighted average of the other components
Universal health coverage	Index	2019	Nationals	GBD 2019, Measuring Universal Health Coverage	Included two subcomponents: communicable and non-communicable
Healthcare Accessibility and Quality Index	Index	2019	National only	GBD 2019	..
Government health spending per capita	2019 US\$	2020	National only	Global Burden of Disease Health Financing Collaborator Network	Mean value
Beds per capita	Number of hospital beds per capita before start of the pandemic	2019	National and subnational	GBD 2019	..
Health spending per capita	2019 US\$	2020	National only	Global Burden of Disease Health Financing Collaborator Network	Mean value
Government corruption (PCA)	Index	..	National only	Transparency International; Varieties of Democracy Institute, Version 10 <sup>21</sup>	Principal components analysis of V-Dem Public sector corruption and the Transparency International's Corruptions Perceptions Index; see appendix (p 45) for more details of methodology
Electoral populism	Populism-based campaign run	..	National only	Populism in Power & Bosancinau <sup>21</sup>	Whether a democratically elected head of government ran a populist campaign

(Table 1 continues on the next page)

	Units	Temporal coverage	Spatial coverage	Data source	Notes
(Continued from previous page)					
Government effectiveness	Index	..	National only	World Bank Indicators and Bosancinau <sup>21</sup>	Perceived quality of public services, its provision, and providers
State fragility	Index	..	National only	State Fragility Index and Bosancinau <sup>21</sup>	Incapacity to provide essential public goods and services and cope with shocks
Electoral democracy index	Index	2020	National only	Varieties of Democracy Institute, Version 11	Aggregate indicator combining free and fair elections, free association, freedom of expression and access to alternative information, suffrage, and elected officials
Interpersonal trust	Trust in other people	2017–21	National only	World values survey wave 7	Trust coded as those who answered “most people can be trusted on Q57”
Trust in science	..	2018	National only	Wellcome Global Monitor Survey	Those who answered “a lot” to trusting science
Trust in government (PCA)	Index	2017–21	National only	World Values Survey Wave 7; Gallup World Poll	Principal components analysis of Gallup’s Politics and Government variable Confidence in National government and World Values Survey (Wave 7) question on confidence in government; see appendix (p 45) for more details of methodology
Gini	Gini index	..	National only	SWIID version 8.2 and Bosancinau <sup>21</sup>	..

Further references for data sources given in the appendix (p 4). BMI=body-mass index. GBD=Global Burden of Diseases, Injuries, and Risk Factors Study. COPD=chronic obstructive pulmonary disease. JEE=Joint External Evaluation. PCA=principal component analysis. SWIID=Standardized World Income Inequality Database.

**Table 1: Covariates used in stage 1 and 2 analyses**

universal health coverage and found no connection between those capacity measures and COVID-19 deaths, even when accounting for differences in population age structure.<sup>15</sup> The report of the Independent Oversight and Advisory Committee for the WHO Health Emergencies Program in May, 2021, also did not find evidence of a relationship between JEE scores and COVID-19 outcomes.<sup>1</sup>

Some previous research has attempted to explain variation in country experiences controlling SARS-CoV-2 infections and averting mortality. To date, most of these analyses have either been commentaries on why preparedness metrics are useful despite not being predictive of COVID-19 pandemic outcomes, or have focused on specific regions,<sup>16</sup> used somewhat limited correlational and descriptive analyses without controlling for known key determinants,<sup>17,18</sup> focused exclusively on cumulative deaths,<sup>19</sup> or had small sample sizes and missing data.<sup>20</sup> One analysis investigated some political, social, and governmental correlates with cumulative deaths per capita,<sup>21</sup> and another found a relationship between trust in government and reduced death rates.<sup>22</sup> Our analysis builds on this research by incorporating results from the Institute for Health Metrics and Evaluation (IHME) on estimated infections built from

hospitalisations, reported cases, and deaths accounting for excess mortality due to the COVID-19 pandemic,<sup>13,14</sup> and additional covariates of interest such as metrics of health system and pandemic preparedness and response capacity. Additionally, we controlled for key covariates associated with age structure of the population and environmental seasonality, among other factors.<sup>23,24</sup> Without controlling for these factors, an analysis risks confounding from other deterministic drivers that are outside the control of policy makers. Also, we differentiated between infection rates and infection-fatality ratios (IFRs) to assess the differences in prevention and treatment of COVID-19. Finally, we incorporated subnational data where available.

The aim of this research was to complete an exploratory analysis of potential correlates of COVID-19 prevention and treatment across 177 countries and territories. We investigated these correlates in relation to both SARS-CoV-2 infections and IFRs to disentangle the factors that prevented the spread of the virus from the health-system factors that prevented death from disease. We controlled for known factors of SARS-CoV-2 infection and mortality that are generally considered outside the control of policy makers (such as altitude, age profile, and seasonality of the disease) and explored associations

	Variation in infections per capita explained by each factor, % (95% UI)	Variation in IFR explained by each factor, % (95% UI)	Reduction in global infections each country's level of trust had exceeded 75th percentile across countries, % (95% UI)	Reduction in global IFR if each country's mean BMI was less than the 25th percentile across all countries, % (95% UI)
Seasonality	2.1% (1.7–2.7)*	..	..	..
Age structure	..	46.7% (18.1–67.6)*	..	..
GDP per capita	4.2% (1.8–6.6)*	3.1% (0.3–8.6)*	..	..
Population density	1.8% (0.8–3.2)	1.7% (0.3–5.6)	..	..
Altitude	5.4% (4.0–7.9)*	..	..	..
Pre-exposure to betacoronavirus	2.1% (1.1–3.1)	0.7% (0.1–2.1)	..	..
Body-mass index	..	1.1% (0.2–2.6)*	..	11.1% (2.1–20.6)*
Smoking prevalence	..	0.3% (0.1–3)	..	..
Air pollution	..	0.3% (0.1–2.1)	..	..
COPD prevalence	..	0.2% (0.0–0.7)	..	..
Cancer prevalence	..	1.6% (0.1–4.8)	..	..
Trust in government†	7.4% (5.4–9.6)*	..	12.9% (5.7–17.8)*	..
Interpersonal trust†	16.5% (12.3–19.5)*	..	40.3% (24.3–51.4)*	..
Unexplained variation	60.6% (55.6–65.2)	44.4% (29.2–61.7)	..	..

BMI=body-mass index. COPD=chronic obstructive pulmonary disease. IFR=infection-fatality ratio. UI=uncertainty interval. \*Estimated parameters that are statistically different from zero. †These covariates are assumed to be independent from each other and all other covariates. Further, a few countries had incomplete reporting of these covariates. Corresponding figures reflect those countries where the respective covariate was present.

**Table 2: Factors associated with variation in cross-country cumulative infections per capita, IFR, and hypothetical levels of trust and prevalence of risk factors**

with 28 factors that policy makers can control. Variables explored were associated with pandemic preparedness indices; health-system capacity indicators; governance variables; and measures of economic inequality and societies' trust in their government, science, and their communities.

## Methods

### Overview

In this research, the outcomes of interest were infections per capita and IFRs. Both were calculated from estimates produced by IHME's ongoing COVID-19 project.<sup>23,24</sup> This research was done in three stages. In stage 1, we standardised the national infection rates and IFRs by estimating what the infection rate and IFR would be if each country had the global mean value of key known drivers of infection and IFR. This process included adjusting national infection rates for environmental seasonality, altitude, and income, among other factors, and standardising IFRs to the global age distribution and the prevalence of competing risks. In stage 2, we measured the cross-country association of these standardised infection rates and IFRs against health-system policy variables, such as measures of pandemic preparedness, health-system capacity, governance factors, and several measures of social and governmental trust, to identify which of these policy factors, if any, were associated with fewer infections and lower IFR. In stage 3, we investigated how reduction in mobility and vaccine coverage might be pathways for more distal policy variables to affect infection rates and IFR. For stages 1 and 2, we assessed two time periods. To assess the full span of the pandemic (until present), we assessed cumulative infection and IFR for

Jan 1, 2020, until Sept 30, 2021. As a sensitivity analysis, we also assessed the time period before vaccines and disease variants were known to have spread, Jan 1, 2020, until Oct 15, 2020. All analyses were done using R (version 4.0.3).<sup>25</sup>

This study complies with the Guidelines for Accurate and Transparent Health Estimates Reporting (GATHER) recommendations (appendix p 5).<sup>26</sup> Code used to produce this analysis is available online.

For the code used in this analysis see <https://github.com/ihmeuw/covid-crosscountry-analysis>

See Online for appendix

### COVID-19 infection and mortality estimates

Daily estimated infections and death counts were extracted from the IHME modelling database. These estimates span from Jan 1, 2020, to Sept 30, 2021, and exist for 177 countries and 181 subnational locations.<sup>24</sup> To estimate the number of COVID-19 deaths, IHME extracted data from the Johns Hopkins University Center for Systems Science and Engineering COVID-19 database, supplemented these data with additional data from national and subnational ministries and departments of health, and adjusted them to correct for missing data and reporting lags. The resulting mortality rates were then adjusted for under-reporting on the basis of the ratio of excess deaths attributable to COVID-19 versus reported deaths, a ratio that was modelled using spatial correlation and additional covariates.<sup>24</sup> To estimate the number of SARS-CoV-2 infections, IHME estimated infections from the number of deaths, hospital census, and reported cases occurring in each location, again extracted from the Johns Hopkins COVID-19 database and adjusted for missing data and reporting lags. The infections estimate was based on IFR, infection to hospitalisation ratios, and infection to detection ratios, respectively,

estimated for each population. Ratio observations were derived by matching the parameter (eg, deaths) to the number of infections occurring in the population according to seroprevalence surveys, the results of which have been adjusted for waning sensitivity of antibody tests and other known biases. The IFR, infection to hospitalisation ratio, and infection to detection ratio were then modelled as a function of covariates to obtain predictions for all locations and days. Underlying data uncertainty and modelling uncertainty were propagated at each stage and incorporated into the quantification of the estimates' uncertainty. Full details of the modelling approaches are provided elsewhere.<sup>13,14,24,27</sup>

For this study, cumulative infections were calculated by summing up the total estimated daily infections for each national or subnational location over the entire time period (and also for the shorter time period, Jan 1, 2020, to Oct 15, 2020), and were divided by the 2019 estimated population in each location to get the cumulative infections per capita.<sup>28</sup> The IFRs were calculated by applying a 9-day lag to our daily infections to account for the delay between infection and death, calculating the sum of infections and deaths, and then dividing the cumulative deaths over the cumulative lagged infections.

### Variable selection

In stage 1, we included demographic, biological, comorbid, economic, and environmental factors known or believed to have influenced infection rates or IFR. Most of these background variables are generally not factors subject to direct policy-maker control, such as population density, gross domestic product (GDP), altitude, and seasonality—factors that might increase transmission—and age, age-standardised chronic obstructive pulmonary disease (COPD) prevalence, and age-standardised cancer prevalence—factors that might increase morbidity or mortality from infection—and previous exposure to coronaviruses, a factor that might influence both subsequent transmission probability and mortality outcomes. A few biological and environmental factors considered at stage 1 are related to health and are policy-amenable, such as body-mass index (BMI), smoking, and air pollution, which might cause increased IFR. We used a theoretical, rather than empirical, approach for including these covariates, assessed for multicollinearity (appendix p 12), and generated standardised infection rates and IFRs that hold these values constant across countries.

In stage 2, we sought to test associations between the standardised infection rates and standardised IFRs and key measures of pandemic preparedness, health-care capacity, and government effectiveness and social conditions that are subject to policy-maker control (table 1). The pandemic preparedness measures included were the JEE and GHS Index, as well as their subcomponents. The health-care capacity and spending measures included the effective coverage index of universal health coverage (UHC) and two UHC index subcomponents (non-communicable diseases

and communicable, maternal, and neonatal disease), Healthcare Access and Quality (HAQ) Index, hospital beds per capita, governmental health expenditure per capita, and health spending per capita. For governance and social measures, we included factors that might affect government capacity, priorities, and responsiveness in a pandemic (such as electoral democracy, government effectiveness, populism, state fragility, and corruption), as well as social factors that might affect the willingness of a population to comply with government or health mandates (income inequality and trust in the government, science, and other members of that population).

### Stage 1: standardising infection rates and IFRs

To improve comparability across countries, we used regression analyses to standardise the effects of COVID-19 determinants that were not directly related to our research questions. For infections, we regressed infection rates on the time-varying relative risk of pneumonia, and then predicted infection rates holding all countries constant at the global mean, generating seasonally adjusted infection rates. We then used a multivariate generalised linear regression to model the association between seasonally-adjusted infections per capita and GDP per capita, a proxy for previous exposure to betacoronavirus-host bat species (appendix p 44), proportion of the population living below 100 m (a factor meant to capture variability in incidence of pneumonia and other lower respiratory infections that vary by altitude<sup>29–31</sup>), and population density. We produced standardised infection rates by estimating the seasonally adjusted infection rates for each location had each had the global mean of each of these factors.

For IFR, we used indirect age standardisation to remove the effects of different age profiles across locations. We then used a multivariate regression model to assess the relationships between the age-standardised IFR and national income per capita, a proxy for previous exposure to betacoronavirus-host bat species, population density, mean BMI, age-standardised COPD prevalence, age-standardised cancer prevalence, air pollution, and smoking prevalence. Among five disease prevalences believed to be related to IFR<sup>32</sup> (COPD, cancer, diabetes [of any type], cardiovascular disease, and chronic kidney disease), the age-standardised rates of chronic kidney and diabetes were correlated, and cardiovascular disease and diabetes were correlated with BMI, leading to multicollinearity. Consequently, age-standardised prevalence of chronic kidney disease, age-standardised cardiovascular disease, and age-standardised diabetes (the factors with the largest variance inflation factors) were removed from the model.

All models were linear regressions, with dependent and independent variables natural-log-transformed adding 5% of the median value for covariates with estimated zeros. To account for within-country correlations and avoid any one country's estimate from unduly impacting our parameter estimates, we down-weighted subnational

locations corresponding to their proportion of the country's population. To estimate the fraction of variance explained by each covariate, we did a Shapley decomposition of the  $r^2$ . Variation accounted for by adjusting for seasonality or age was calculated by comparing the sum of squares of the standardised values (cumulative infections per capita and IFRs) to their respective raw values. Additionally, we used regressions estimated in stage 1 to conduct counterfactual analyses. These analyses are presented in table 2 and denote reductions in IFR had risk factors (ie, BMI) been at the 25th percentile across countries, and reductions in infections had trust variables (ie, government trust and interpersonal trust) been at the 75th percentile across countries.

### Stage 2: exploring health care, governance, and social associations with standardised COVID-19 outcomes

Standardised infection rates and standardised IFRs from stage 1 (measured for all 177 countries) were used as the dependent variable in stage 2. We regressed these on the 28 health-care, governance, and social indicators previously described and which are outlined in table 1.

For comparisons, all covariates were centred around 0 and scaled to have an SD of 1. Because these indicators are highly correlated with other indicators, and some have a great deal of missingness (appendix pp 8–40), we used bivariate linear regression models to assess each association independent of all the other indicators. To address the issue of testing multiple hypotheses, we adjusted our p value threshold using a Bonferroni correction for each of our stage 2 covariates ( $n=28$ ) and a desired  $\alpha$  of 0.05, resulting in a significance cutoff of 0.0018. For trust in the government and government corruption, multiple data sources existed with varying degrees of variable completeness and coverage by location, so we conducted a principal component analysis (PCA) and extracted the first component to create a summary indicator. We used a PCA method (missMDA package in R)<sup>33</sup> that imputed values for countries with missing information (appendix p 45). To estimate the fraction of variance explained by each indicator, we noted the sum of squares explained by each factor and combined each value with the raw sum of squares of cumulative infections per capita or of IFR.

### Stage 3: the association between key factors and intermediate health outputs

To explore two potential pathways connecting the governance and social factors identified as statistically associated with COVID-19 outcomes in stage 2, we assessed the relationship between these variables—interpersonal trust, government trust, and government corruption—and the most extreme country-specific reduction in mobility observed at any point in 2020 or 2021, relative to a pre-pandemic baseline that was based on a composite metric extracted from smartphone data,<sup>34</sup> and the maximum achieved vaccine coverage (at least

one dose) as of Sept 30, 2021. Given the lack of access to vaccinations and vaccine supplies in many low-income and lower-middle-income countries during our study period, the analysis of vaccine coverage was only on upper-middle-income and high-income countries.

### Uncertainty and sensitivity analyses

To capture uncertainty associated with the input data and uncertainty associated with our linear models, we completed our analysis 100 times independently, each on a separate draw produced previously by IHME for estimating infection and IFR uncertainty.<sup>24,35</sup> Additionally, for each draw and each linear regression we took a random sample draw from the estimated variance-covariance matrix to incorporate model uncertainty. Similarly, the PCA-based summary indicators were completed 100 times to capture uncertainty from the imputation process. Here, we report the mean of the 100 estimates, with uncertainty intervals (UIs) spanning for the 2.5th and 97.5th percentiles of the 100 estimates.

To assess the effect of our modelling choices, we did sensitivity analyses using centred and scaled data rather than log-transformed covariates in stage 1, and adding 1% of the median for covariates with values of 0, rather than 5%. To assess the effect of imperfect input data, we did sensitivity analyses using only national and subnational locations where we had seroprevalence survey data ( $n=303$ ; appendix p 53), and did our analysis without incorporating IHME's technique for adjusting for within-country excess mortality. To assess the role that novel variants and vaccine coverage might have on our analysis, we did a sensitivity analysis including variant spread as a stage 1 covariate and ran our analyses using a subset of the data from the pre-vaccine, pre-variant era, Jan 1, 2020, to Oct 15, 2020.

### Role of the funding source

Funding was provided by the Bill & Melinda Gates Foundation, Bloomberg Philanthropies, J Stanton, T Gillespie, and J and E Nordstrom. The funders of the study had no role in the study design, data collection, data analysis, data interpretation, or the writing of the report. Members of the core research team for this topic area had full access to the underlying data used to generate estimates presented in this paper. All other authors had access, and reviewed, estimates as part of the research evaluation process, which includes additional stages of formal review.

### Results

Between Jan 1, 2020, and Sept 30, 2021, we found substantial cross-country variation in SARS-CoV-2 infection rates (figure 1A). Although the global infection rate was 433 per 1000 population (95% UI 393–493), country-specific estimates ranged from 1 per 1000 population (0–1) in China to 988 per 1000 population (507–1111) in Afghanistan. Excess relative risk of infection associated with seasonality explained 2.1%

**A Marginal effect of standardising infection rates**

	Unadjusted infections per 1000 people	Seasonality	Altitude	GDP per capita	Population density	Previous betacoronavirus exposure	Adjusted infections per 1000 people
<b>Central Europe, Eastern Europe, and Central Asia</b>							
Armenia	908	25	-255	-13	-9	-62	594
Azerbaijan	900	13	108	48	3	-13	1060
Georgia	833	20	-34	-9	-3	-68	740
Kazakhstan	814	13	-70	107	17	132	1014
Kyrgyzstan	934	4	-251	-148	9	8	556
Mongolia	410	25	-137	6	-1	70	373
Tajikistan	782	13	-208	-132	4	-5	454
Uzbekistan	628	10	-78	-40	5	38	562
Albania	870	17	94	21	-9	-73	921
Bosnia and Herzegovina	717	15	-91	11	21	-60	612
Bulgaria	636	21	-49	64	5	-64	613
Croatia	457	9	10	65	2	-44	499
Czech Republic	658	2	-206	121	-1	-43	531
Hungary	483	3	21	84	-3	-49	540
North Macedonia	838	12	-225	32	14	-66	604
Montenegro	915	23	-43	79	30	-78	926
Poland	405	2	17	72	-1	-25	469
Romania	550	50	81	84	-6	-50	709
Serbia	552	28	28	27	-1	-51	582
Slovakia	193	3	-48	33	1	-16	166
Slovenia	374	7	-64	70	1	-36	351
Belarus	492	13	-142	7	-3	-11	354
Estonia	233	12	57	48	-4	5	351
Latvia	345	19	69	58	-1	-8	483
Lithuania	548	29	63	108	4	-21	730
Moldova	634	16	38	-72	11	-38	588
Russia	828	30	31	123	-7	160	1165
Ukraine	500	25	16	-23	-2	-13	503
<b>High income</b>							
Brunei	58	9	15	22	0	-12	92
Japan	46	0	8	12	-1	1	67
South Korea	18	1	3	5	0	1	28
Singapore	35	9	9	16	-1	-8	59
Australia	9	2	2	3	0	3	18
New Zealand	1	0	0	0	0	1	3
Andorra	462	1	-152	140	-5	-42	405
Austria	180	2	-57	42	0	-14	153
Belgium	281	3	55	79	-2	-19	397
Cyprus	133	1	13	28	-2	-8	164
Denmark	102	1	26	33	-1	4	166

(Figure 1 continues on next page)



Finland	119	4	23	36	1	20	204
France	294	1	36	75	-2	-27	376
Germany	141	2	14	42	-1	-9	188
Greece	129	3	13	21	-2	-10	154
Iceland	63	2	9	24	0	39	136
Ireland	156	5	35	65	-2	2	261
Israel	247	4	37	56	-6	-10	328
Italy	224	0	22	51	-4	-19	273
Luxembourg	226	2	-77	79	-1	-14	214
Malta	151	1	33	40	-4	15	236
Netherlands	224	1	56	74	-4	-8	344
Norway	190	3	12	76	-1	31	311
Portugal	210	1	25	40	-3	-19	255
Spain	242	0	11	54	-4	-19	284
Sweden	225	1	48	73	-3	24	368
Switzerland	190	2	-62	52	-2	-16	164
UK	252	8	53	69	-7	-1	374
Argentina	638	2	104	55	-12	99	887
Chile	332	2	-36	48	-6	79	420
Uruguay	329	1	74	43	-9	34	472
Canada	202	6	21	64	-5	59	346
USA	328	8	33	119	-5	62	545
<b>Latin America and Caribbean</b>							
Antigua and Barbuda	258	28	67	46	3	30	433
The Bahamas	437	53	124	99	-9	136	839
Barbados	97	31	21	8	-1	19	175
Belize	392	18	68	-24	24	-18	460
Cuba	201	7	33	-11	0	5	235
Dominican Republic	321	3	50	22	-5	20	411
Guyana	428	20	86	-28	1	-31	476
Haiti	225	10	16	-67	-2	12	194
Jamaica	199	3	6	-11	-1	7	204
Saint Lucia	361	17	41	8	0	31	458
Saint Vincent and the Grenadines	158	33	7	1	0	7	205
Suriname	508	36	111	15	3	-33	640
Trinidad and Tobago	220	10	40	37	0	-8	299
Bolivia	921	3	-252	-67	-1	-19	585
Ecuador	822	2	29	-3	-7	-46	797
Peru	692	2	-11	17	-8	-17	674
Colombia	568	2	-8	19	-5	-36	539
Costa Rica	514	13	-11	32	-5	-26	517
El Salvador	329	9	-22	-14	-3	-16	284
Guatemala	654	13	-70	-39	3	-31	530
Honduras	879	6	32	-111	1	-47	761
Mexico	716	6	-4	58	-14	14	777
Nicaragua	597	11	24	-69	5	-27	540
Panama	493	2	75	71	-5	-32	603
Venezuela	593	12	-2	-37	-3	-37	526
Brazil	626	3	36	26	-12	-31	648
Paraguay	716	1	33	-21	-4	-4	721

(Figure 1 continues on next page)

Bermuda	182	21	58	88	-8	125	467
Puerto Rico	152	1	27	36	-2	11	225
Virgin Islands	208	7	43	72	5	61	395
<b>North Africa and Middle East</b>							
Algeria	185	1	-1	4	-2	18	205
Bahrain	604	1	162	178	-20	116	1041
Egypt	637	11	144	0	-18	60	834
Iran	624	7	-48	40	-1	-2	621
Iraq	888	8	142	21	0	73	1132
Jordan	718	7	-93	-6	-13	30	642
Kuwait	538	0	126	195	-12	55	903
Lebanon	653	4	74	35	-12	-48	706
Libya	813	14	82	4	6	123	1043
Morocco	651	3	42	-26	-8	3	665
Palestine	853	16	85	-112	-17	-38	787
Oman	450	0	30	101	9	26	617
Qatar	617	1	176	330	-17	71	1179
Saudi Arabia	245	0	11	70	1	28	356
Syria	145	6	-24	-21	-1	5	110
Tunisia	844	2	129	4	-7	45	1016
Turkey	539	14	4	71	-9	-13	606
United Arab Emirates	290	1	39	107	-3	28	462
Yemen	349	4	-20	-98	1	6	242
Afghanistan	988	2	-255	-225	8	15	533
Sudan	378	5	-81	-59	8	4	255
<b>South Asia</b>							
Bangladesh	728	2	143	-122	-12	-49	690
India	748	2	53	-52	-5	-40	706
Nepal	893	7	28	-193	-4	-66	664
Pakistan	884	5	21	-116	-4	7	796
<b>Southeast Asia, east Asia, and Oceania</b>							
China	1	0	0	0	0	0	1
Taiwan (province of China)	5	0	1	2	0	0	7
Cambodia	222	16	40	-37	3	-29	215
Indonesia	517	2	54	6	-4	-59	516
Malaysia	371	10	66	62	-5	-69	436
Maldives	397	5	-52	30	-13	200	567
Myanmar	304	6	34	-28	4	-41	279
Philippines	340	10	55	-16	-4	-35	351
Sri Lanka	167	3	21	3	-1	-12	182
Thailand	136	8	19	11	0	-22	152
Timor-Leste	264	1	-6	-34	2	-15	212
Vietnam	71	3	11	-7	0	-10	67
Fiji	455	11	102	-23	-2	254	797
Papua New Guinea	163	19	-5	-32	10	11	166
Mauritius	67	6	-3	9	-1	11	89
Seychelles	458	15	74	101	0	159	806
Guam	482	31	91	177	-8	141	913
Northern Mariana Islands	54	0	10	12	0	15	91

(Figure 1 continues on next page)

(1.7–2.7) of the variation in cross-country daily infection rates (table 2). Countries such as Romania, the Bahamas, and Suriname were most positively affected by excess risk associated with seasonality (figure 1A). A further 5.4% (4.0–7.9) of the cross-country variation was explained by controlling for population

living below 100 m in altitude, followed by GDP per capita (4.2% [1.8–6.6] of variation; table 2). Population density and our proxy measure of previous exposure to betacoronaviruses from bat hosts were not significantly associated with infection (table 2). Most cross-country variation (60.6% [55.6–65.2]) in cumulative infection

Sub-Saharan Africa							
Angola	427	13	35	-44	-3	-20	409
Central African Republic	451	0	-103	-138	6	-31	184
Congo (Brazzaville)	347	21	-21	-42	1	-34	272
DR Congo	341	0	-75	-97	3	-26	146
Equatorial Guinea	372	8	-44	44	16	-39	356
Gabon	275	13	-4	18	3	-28	277
Burundi	144	4	-33	-45	1	-12	58
Djibouti	460	13	31	-82	-3	-6	413
Eritrea	172	1	-16	-47	4	0	115
Ethiopia	422	7	-104	-95	7	-17	219
Kenya	774	4	-94	-131	4	-66	491
Madagascar	599	1	-11	-179	11	28	449
Malawi	696	1	-111	-195	9	-70	329
Mozambique	400	1	26	-127	6	-22	285
Rwanda	372	3	-90	-75	3	-37	175
Somalia	682	21	30	-392	19	40	399
Uganda	466	2	-112	-96	6	-49	217
Zambia	477	1	-121	-67	4	-43	251
Botswana	793	4	-246	42	27	12	633
Lesotho	789	3	-211	-136	18	0	463
Namibia	922	3	-112	-8	0	44	849
South Africa	811	4	-33	13	-13	7	789
Zimbabwe	690	3	-169	-144	6	-53	333
Benin	168	3	16	-40	1	-19	130
Burkina Faso	385	11	-97	-87	6	-21	197
Cameroon	348	12	-9	-61	1	-32	259
Cape Verde	586	4	-12	-48	1	130	662
Chad	239	0	-63	-54	8	6	136
Côte d'Ivoire	358	5	15	-53	2	-39	287
The Gambia	566	1	104	-159	-3	-58	452
Ghana	295	1	14	-43	0	-38	230
Guinea	434	1	-3	-107	3	-41	287
Guinea-Bissau	437	3	80	-132	4	-44	348
Liberia	327	0	23	-112	2	-28	212
Mali	392	3	-63	-98	3	18	254
Mauritania	482	4	74	-101	3	68	529
Niger	228	1	-60	-69	7	18	125
Nigeria	424	3	-14	-49	-1	-36	328
São Tomé and Príncipe	480	11	-137	-83	0	89	359
Senegal	630	1	123	-144	5	-25	590
Sierra Leone	186	0	18	-56	1	-18	131
Togo	304	2	25	-82	1	-37	211
South Sudan	312	1	-89	-11	27	-32	208

(Figure 1 continues on next page)

**B Marginal effect of standardising IFR**

	Unadjusted IFR per 1000 infections	Age pattern	Air pollution	BMI	Cancer prevalence	COPD prevalence	GDP per capita	Population density	Previous betacoronavirus exposure	Smoking prevalence	Adjusted IFR per 1000 infections
<b>Central Europe, Eastern Europe, and Central Asia</b>											
Armenia	4.42	-1.04	0.06	-0.29	0.2	-0.02	-0.07	0.14	-0.19	-0.03	3.18
Azerbaijan	3.57	1.12	-0.02	-0.39	0.18	-0.02	0.2	-0.04	-0.03	-0.02	4.54
Georgia	3.42	-1.35	0	-0.2	0.09	-0.01	-0.03	0.03	-0.13	-0.02	1.79
Kazakhstan	2.95	0.66	-0.07	-0.47	0.16	-0.04	0.39	-0.19	0.28	-0.02	3.64
Kyrgyzstan	2.76	1.61	-0.01	0.06	0.19	-0.04	-0.67	-0.12	0.02	-0.02	3.77
Mongolia	0.96	0.79	0.04	0.01	0.06	0.02	0.02	0.02	0.15	-0.02	2.06
Tajikistan	1.19	1.59	0.06	0.3	0.08	0.01	-0.44	-0.04	-0.01	0.02	2.77
Uzbekistan	2.39	2.51	0.03	-0.18	0.16	0.03	-0.24	-0.09	0.13	0.02	4.76
Albania	4.49	-1.6	-0.04	-0.19	0.36	0.03	0.09	0.11	-0.18	-0.04	3.03
Bosnia and Herzegovina	5.43	-2.23	0.04	-0.23	0.39	-0.01	0.07	-0.4	-0.22	-0.05	2.79
Bulgaria	8.47	-4.53	-0.04	-0.63	0.62	-0.05	0.63	-0.16	-0.37	-0.08	3.85
Croatia	5.84	-3.25	-0.05	-0.44	0.63	-0.04	0.6	-0.07	-0.24	-0.06	2.93
Czech Republic	4.78	-2.59	-0.06	-0.45	0.41	-0.03	0.76	0.02	-0.16	-0.04	2.65
Hungary	7	-3.74	-0.08	-0.71	0.54	-0.09	0.87	0.08	-0.3	-0.06	3.52
North Macedonia	6.52	-1.67	0.07	-0.48	0.54	0.01	0.24	-0.32	-0.3	-0.08	4.53
Montenegro	4.54	-1.5	-0.02	-0.4	0.37	0.05	0.31	-0.36	-0.18	-0.05	2.76
Poland	8.08	-3.62	-0.02	-0.71	-0.57	-0.01	0.99	0.06	-0.2	-0.05	3.95
Romania	6.15	-3.33	-0.09	-0.39	0.66	-0.02	0.66	0.15	-0.23	-0.04	3.51
Serbia	4.09	-1.78	0.01	-0.37	0.44	-0.03	0.15	0.01	-0.17	-0.04	2.31
Slovakia	13.89	-6.01	-0.13	-1.17	1.37	0.03	2.16	-0.11	-0.62	-0.1	9.31
Slovenia	9.32	-5.42	-0.11	-0.84	0.7	0.01	1.36	-0.05	-0.4	-0.05	4.53
Belarus	9.03	-3.83	-0.06	-0.54	0.94	0.03	0.11	0.19	-0.12	-0.1	5.65
Estonia	8.66	-5.1	-0.36	-0.81	0.9	0.08	1.16	0.26	0.08	-0.06	4.79
Latvia	8.95	-5.27	-0.16	-0.78	0.8	0.09	0.96	0.05	-0.08	-0.08	4.49
Lithuania	8.96	-5.3	-0.2	-0.67	0.95	0.06	1.18	-0.12	-0.14	-0.07	4.65
Moldova	4.05	-1.32	-0.04	-0.31	0.37	0	-0.35	-0.17	-0.11	-0.02	2.1
Russia	5.17	-2.18	-0.07	-0.59	0.63	0.02	0.58	0.1	0.45	-0.05	4.06
Ukraine	4.5	-1.93	-0.02	-0.28	0.47	0.01	-0.16	0.05	-0.05	-0.04	2.54
<b>High income</b>											
Brunei	2.66	2.38	-0.29	0.57	0.87	-0.05	1.34	-0.01	-0.43	0.01	7.04
Japan	11.87	-11.7	-0.3	1.93	2.13	0.13	2.35	0.58	0.12	-0.06	7.05
South Korea	2.88	-1.61	0.01	0.41	0.59	0	0.67	0.21	0.08	-0.02	3.24
Singapore	0.49	-0.18	0	0.06	0.11	0.01	0.2	0.05	-0.06	0	0.68
Australia	6.06	-2.87	-0.22	-0.91	-0.1	-0.07	1.28	0.29	0.71	0	4.18
New Zealand	4.99	-2.5	-0.25	-0.7	-0.06	-0.07	0.9	0.22	1.09	-0.01	3.61
Andorra	6.28	-3.12	-0.15	-0.36	0.23	-0.08	1.74	0.2	-0.3	-0.04	4.41
Austria	8.84	-5.44	-0.19	-0.22	1.11	-0.1	1.84	0.04	-0.36	-0.09	5.44
Belgium	9.88	-5.81	-0.19	-0.14	0.32	-0.16	1.88	0.15	-0.26	-0.04	5.61
Cyprus	3.21	-1.05	-0.04	0.1	-0.04	-0.03	0.56	0.12	-0.1	-0.03	2.71
Denmark	9.72	-5.72	-0.29	0	0.3	-0.19	2.07	0.2	0.16	-0.04	6.21

(Figure 1 continues on next page)

Finland	9.12	-5.89	-0.42	-0.3	0.36	-0.02	1.65	-0.16	0.54	-0.03	4.85
France	7.00	-4.3	-0.16	0.03	0.21	0.01	1.26	0.1	-0.26	-0.06	3.83
Germany	12.62	-8.24	-0.27	-0.57	0.59	-0.15	2.5	0.24	-0.3	-0.09	6.34
Greece	11.24	-7.17	-0.12	-0.38	0.28	-0.08	1.24	0.29	-0.35	-0.11	4.84
Iceland	1.61	-0.78	-0.08	-0.12	0.02	-0.02	0.39	0.02	0.38	0	1.41
Ireland	6.94	-2.72	-0.29	-0.45	0.26	-0.12	2.07	0.17	0.04	-0.04	5.87
Israel	3.5	-0.73	-0.03	-0.13	0.1	-0.01	0.69	0.22	-0.07	-0.01	3.52
Italy	11.76	-8.41	-0.13	0.07	0.69	-0.03	1.89	0.5	-0.41	-0.06	5.88
Luxembourg	7.00	-3.35	-0.23	-0.01	0.26	-0.1	2.29	0.1	-0.23	-0.05	5.68
Malta	8.37	-5.18	-0.14	-0.34	0.02	-0.03	1.46	0.45	0.31	-0.04	4.87
Netherlands	9.47	-5.55	-0.22	-0.22	0.36	-0.15	2.11	0.33	-0.13	-0.05	5.95
Norway	1.75	-1.01	-0.08	-0.04	0.18	-0.03	0.51	0.02	0.12	0	1.42
Portugal	16.56	-10.2	-0.54	-0.37	0.01	-0.1	2.11	0.42	-0.57	-0.06	7.26
Spain	13.99	-8.44	-0.39	-0.6	0.38	-0.13	2.23	0.54	-0.45	-0.11	7.02
Sweden	8.11	-5.09	-0.38	-0.21	0.37	-0.09	1.72	0.21	0.33	0.02	5
Switzerland	8.94	-5.48	-0.27	0.14	0.28	-0.05	2.18	0.25	-0.38	-0.05	5.56
UK	10.82	-5.6	-0.29	-0.87	-0.05	-0.17	1.96	0.58	-0.02	-0.05	6.31
Argentina	4.37	-0.72	-0.1	-0.31	0.29	-0.05	0.32	0.21	0.34	-0.03	4.31
Chile	6.22	-1.59	-0.03	-0.8	0.42	-0.01	0.79	0.29	0.76	-0.08	5.98
Uruguay	5.97	-2.54	-0.2	-0.39	0.36	-0.07	0.55	0.34	0.26	-0.06	4.23
Canada	7.17	-3.9	-0.32	-0.88	-0.04	-0.05	1.43	0.32	0.78	0	4.51
USA	7.48	-3.33	-0.3	-1.46	-0.16	-0.11	1.71	0.2	0.52	-0.01	4.55
<b>Latin America and Caribbean</b>											
Antigua and Barbuda	4.63	-0.28	-0.04	-0.43	-0.1	0.09	0.63	-0.12	0.25	0.05	4.67
The Bahamas	5.37	0.36	-0.07	-0.93	-0.14	0.1	0.96	0.26	0.78	0.06	6.74
Barbados	5.62	-2.24	0	-0.77	-0.06	0.09	0.28	0.15	0.39	0.05	3.51
Belize	4.33	2.22	0	-0.82	-0.18	0.02	-0.25	-0.78	-0.11	0.02	4.45
Cuba	4.98	-1.89	-0.02	-0.51	-0.08	-0.03	-0.17	0.02	0.05	-0.03	2.32
Dominican Republic	3.47	0.91	-0.09	-0.44	-0.15	0.05	0.23	0.18	0.12	0.03	4.31
Guyana	4.59	1.78	0	-0.44	-0.19	0.07	-0.3	-0.03	-0.2	0.03	5.3
Haiti	3.72	3.88	-0.08	1.04	-0.23	0.02	-1.76	0.13	0.18	0.1	6.98
Jamaica	6.13	-0.41	-0.12	-0.59	-0.13	0.02	-0.29	0.09	0.12	0	4.8
Saint Lucia	4.93	-0.74	0	-0.52	-0.12	0.01	0.09	-0.01	0.2	0.03	3.86
Saint Vincent and the Grenadines	4.33	-0.43	-0.01	-0.45	-0.11	0.07	0.03	0.03	0.08	-0.01	3.54
Suriname	4.66	0.15	0.02	-0.59	-0.18	0.04	0.11	-0.06	-0.15	-0.01	3.98
Trinidad and Tobago	7.67	-1.64	0.01	-1.14	-0.22	0.11	0.97	0.04	-0.12	0	5.68
Bolivia	8.74	4.49	-0.03	0.13	-0.17	0.03	-0.95	0.05	-0.16	0.12	12.26
Ecuador	5.92	1.45	-0.12	-1.02	0.05	0.06	-0.02	0.16	-0.2	0.05	6.33
Peru	9.59	0.85	0.04	-0.72	-0.12	0.15	0.24	0.36	-0.15	0.12	10.36
Colombia	5.16	-0.45	-0.07	-0.25	-0.08	-0.03	0.17	0.15	-0.18	0.02	4.43
Costa Rica	2.72	-0.15	-0.04	-0.29	-0.02	0	0.16	0.07	-0.08	0	2.37
El Salvador	5.11	0.26	0.01	-0.44	-0.09	0.03	-0.23	0.14	-0.15	0.06	4.7
Guatemala	2.48	1.8	0	0.1	-0.08	0.05	-0.22	-0.05	-0.1	0.02	4.01
Honduras	3.94	3.03	-0.02	0.12	-0.12	-0.02	-0.69	-0.02	-0.17	0.01	6.06
Mexico	5.78	0.85	-0.03	-0.94	0.09	-0.02	0.48	0.36	0.07	0.02	6.65
Nicaragua	3.18	1.88	-0.04	-0.09	-0.07	0.02	-0.46	-0.1	-0.11	0.02	4.23
Panama	3.98	0.11	-0.13	-0.12	-0.07	0.03	0.54	0.12	-0.14	0.05	4.38
Venezuela	5.70	0.13	-0.07	-0.34	-0.06	0	-0.35	0.09	-0.21	0.01	4.91
Brazil	4.57	-0.17	-0.11	-0.07	-0.39	-0.04	0.18	0.26	-0.12	0.04	4.15
Paraguay	3.66	1.15	-0.12	-0.1	-0.33	0.02	-0.11	0.08	-0.01	0.02	4.25
Bermuda	7.69	-5.01	-0.19	-1.5	-0.08	0.09	1.96	0.53	1.67	0.04	5.2

(Figure 1 continues on next page)

Puerto Rico	7.88	-4.08	-0.24	-1.69	-0.13	-0.01	1.09	0.19	0.19	0.02	3.22
Virgin Islands	9.42	-3.94	-0.26	-2.21	-0.14	0.09	1.88	-0.38	0.93	0.12	5.53
<b>North Africa and Middle East</b>											
Algeria	3.93	1.7	0.12	-0.49	0.35	0.02	0.11	0.18	0.28	-0.02	6.18
Bahrain	3.51	2.3	0.26	-1.26	0.38	0	1.15	0.4	0.44	0.01	7.19
Egypt	3.23	2.88	0.28	-0.93	0.33	-0.04	0	0.35	0.23	-0.02	6.3
Iran	3.44	0.89	0.09	-0.39	0.23	0	0.25	0.02	-0.01	0.01	4.53
Iraq	2.65	3.07	0.19	-0.53	0.3	0.09	0.09	0	0.18	-0.01	6.03
Jordan	2.05	2.04	0.05	-0.59	-0.01	0.02	-0.03	0.17	0.08	-0.01	3.77
Kuwait	1.28	1.04	0.08	-0.58	0.15	0.04	0.54	0.1	0.09	-0.01	2.73
Lebanon	6.11	0.21	0.08	-0.99	0.53	-0.05	0.32	0.34	-0.25	-0.07	6.22
Libya	2.72	1.15	0.12	-0.55	0.23	-0.02	0.01	-0.07	0.26	0	3.85
Morocco	4.14	1.33	0.08	-0.38	0.33	0.01	-0.19	0.17	0.01	0.03	5.53
Palestine	1.96	2.71	0.05	-0.18	0.23	0.03	-0.44	0.21	-0.09	-0.02	4.45
Oman	3.7	6.69	0.21	-1.15	0.51	0.1	1.38	-0.4	0.21	0.06	11.32
Qatar	0.61	1.27	0.08	-0.44	0.18	0.01	0.52	0.08	0.07	0.01	2.38
Saudi Arabia	2.94	3.83	0.3	-1.19	0.37	0	1.2	-0.06	0.29	0.04	7.72
Syria	5.66	2.05	0.19	-0.6	0.44	0	-1.06	0.1	0.15	-0.03	6.89
Tunisia	4.75	-0.02	0.11	-0.56	0.34	0	0.02	0.12	0.14	-0.02	4.87
Turkey	3.03	-0.09	0.09	-0.51	0.33	-0.05	0.39	0.16	-0.04	-0.03	3.29
United Arab Emirates	3.2	4.03	0.14	-1.64	0.4	-0.06	1.58	0.14	0.24	0.05	8.08
Yemen	2.65	4.58	0.17	0.92	0.32	0	-1.68	-0.07	0.06	-0.01	6.95
Afghanistan	3.2	7.95	0.28	0.98	0.46	-0.01	-2.18	-0.22	0.08	0.04	10.57
Sudan	2.24	3.02	0.14	-0.16	0.23	0.01	-0.66	-0.29	0.03	0.03	4.58
<b>South Asia</b>											
Bangladesh	1.9	0.67	0.09	0.56	-0.43	-0.03	-0.37	0.11	-0.09	-0.01	2.41
India	2.69	1.12	0.2	0.84	-0.51	-0.05	-0.24	0.07	-0.11	0.01	4.01
Nepal	3.23	1.67	0.22	0.54	-0.71	-0.06	-0.9	0.06	-0.18	-0.02	3.85
Pakistan	2.25	3.04	0.15	0.45	-0.6	-0.03	-0.5	0.06	0.02	0.02	4.85
<b>Southeast Asia, east Asia, and Oceania</b>											
China	4.83	-1.28	0.2	0.38	-0.23	-0.02	0.28	0.12	0.09	-0.03	4.33
Taiwan (province of China)	6.83	-3.39	0	0.28	-0.13	0.13	1.62	0.43	-0.18	-0.02	5.57
Cambodia	3.62	2.22	0.02	1.31	-0.34	-0.01	-0.78	-0.21	-0.35	-0.03	5.44
Indonesia	3.58	1.49	-0.06	0.64	-0.16	-0.02	0.05	0.1	-0.29	-0.06	5.27
Malaysia	3.78	1.28	-0.07	0.16	-0.27	0	0.69	0.17	-0.45	-0.01	5.27
Maldives	1.62	1.44	-0.13	0.32	-0.19	-0.04	0.17	0.23	0.66	-0.02	4.06
Myanmar	5.39	1.84	0.12	1.34	-0.44	-0.12	-0.58	-0.25	-0.5	-0.04	6.75
Philippines	2.00	1.42	-0.03	0.54	-0.12	-0.01	-0.12	0.11	-0.16	-0.02	3.6
Sri Lanka	4.24	-0.24	-0.15	0.84	-0.3	-0.02	0.08	0.08	-0.17	0.01	4.38
Thailand	4.9	-1.46	0.02	0.19	-0.26	0	0.31	-0.02	-0.37	-0.02	3.3
Timor-Leste	2.46	2.39	-0.03	1.19	-0.27	-0.02	-0.54	-0.1	-0.13	-0.04	4.9
Vietnam	6.68	1.05	0.09	2.17	-0.47	-0.08	-0.75	0.16	-0.64	-0.06	8.15
Fiji	4.62	2.26	-0.18	-0.67	-0.56	0.19	-0.21	0.04	1.4	-0.07	6.82
Papua New Guinea	2.03	2.65	-0.08	0.34	-0.3	-0.04	-0.57	-0.57	0.11	-0.04	3.54
Mauritius	2.81	-0.69	-0.05	0.04	-0.17	0	0.3	0.13	0.23	-0.02	2.59
Seychelles	2.73	0.05	-0.01	-0.09	-0.16	-0.01	0.5	0	0.47	-0.02	3.46
Guam	3.32	-0.18	-0.1	-0.83	-0.32	0.07	0.88	0.13	0.41	-0.03	3.34
Northern Mariana Islands	5.32	-0.1	-0.19	-1.03	-0.39	0.09	0.87	-0.07	0.64	-0.06	5.08

(Figure 1 continues on next page)

rates could not be explained by the covariates presented to the analysis.

Similar to infection rates, COVID-19 IFRs varied dramatically across countries during the first 21 months of the pandemic (January, 2020, to September, 2021; figure 1B). Although the global IFR was 3.4 (95% UI 2.4–4.8) per 1000 infections, country-specific estimates

ranged from 0.49 (0.34–0.64) in Singapore to 16.56 (9.35–26.81) in Portugal. Age was a clear contributor to this cross-country variation, explaining 46.7% (18.1–67.6) of cross-country variation. The countries that saw the largest increases in IFR due to age (ie, the countries with older populations, and saw decreases in IFR when age standardised) were Japan,

Sub-Saharan Africa											
Angola	1.86	4.41	0.06	0.88	-0.27	0.02	-0.44	0.09	-0.12	0.03	6.53
Central African Republic	1.82	3.42	0.14	0.98	-0.22	0.01	-1.55	-0.19	-0.2	0.04	4.25
Congo (Brazzaville)	1.49	1.96	0.08	0.27	-0.15	0	-0.32	-0.02	-0.15	0.02	3.17
DR Congo	1.06	1.84	0.05	0.5	-0.12	0	-0.79	-0.08	-0.12	0.04	2.37
Equatorial Guinea	1.87	4.27	0.15	0.15	-0.25	0.01	0.47	-0.55	-0.25	0.04	5.91
Gabon	2.59	2.34	0.11	-0.17	-0.22	0.02	0.23	-0.12	-0.22	0.02	4.59
Burundi	1.62	2.96	0.06	0.83	-0.41	0.01	-1.35	-0.1	-0.21	0.03	3.45
Djibouti	2.97	4.01	0.15	0.93	-0.69	0.05	-0.92	0.11	-0.04	-0.02	6.55
Eritrea	1.46	2.87	0.1	1	-0.41	0.01	-0.95	-0.24	0	0.05	3.9
Ethiopia	1.87	3.48	0.08	1.13	-0.47	0.06	-1.08	-0.22	-0.11	0.09	4.82
Kenya	1.88	2.79	0.03	0.45	-0.4	0.01	-0.64	-0.06	-0.19	0.03	3.9
Madagascar	1.55	2.79	0	0.84	-0.41	-0.01	-0.97	-0.19	0.09	0.01	3.7
Malawi	2.2	3.43	0.01	0.53	-0.48	0.03	-1.35	-0.18	-0.28	0.03	3.94
Mozambique	3.66	6.83	-0.02	1.37	-0.91	0.05	-2.4	-0.35	-0.23	0.03	8.03
Rwanda	2.44	3.17	0.1	0.68	-0.51	0.01	-1.05	-0.12	-0.3	0.01	4.42
Somalia	2.03	4.43	0.06	1.09	-0.54	0.03	-2.72	-0.38	0.15	0.03	4.18
Uganda	2.02	4.22	0.13	0.8	-0.52	0.03	-1.13	-0.21	-0.33	0.04	5.07
Zambia	4.67	8.98	0.06	1.3	-1.18	0.05	-1.61	-0.28	-0.6	-0.01	11.39
Botswana	4.68	4.77	0.01	0.16	0.42	-0.02	0.41	-0.84	0.07	-0.03	9.62
Lesotho	6.94	6.15	0.08	0.37	0.51	-0.09	-2.04	-0.81	0	-0.03	11.07
Namibia	4.55	4.73	0.05	1.02	0.43	-0.02	-0.06	-0.01	0.22	-0.01	10.89
South Africa	5.15	2.07	0.03	-0.64	0.39	-0.02	0.1	0.31	0.03	-0.02	7.4
Zimbabwe	3.96	5.67	-0.01	0.87	0.36	0	-1.88	-0.22	-0.4	-0.02	8.33
Benin	1.77	3.06	0.07	0.27	-0.2	0	-0.8	-0.09	-0.22	0.05	3.91
Burkina Faso	0.78	1.33	0.04	0.21	-0.09	0.01	-0.41	-0.08	-0.06	0.01	1.74
Cameroon	1.66	2.71	0.14	0.03	-0.18	-0.01	-0.56	-0.04	-0.17	0.04	3.62
Cape Verde	1.61	0.65	0.04	0.15	-0.11	0.02	-0.15	-0.01	0.25	0.03	2.46
Chad	1.66	3.86	0.16	1.01	-0.23	0.02	-1.04	-0.49	0.07	0.02	5.04
Côte d'Ivoire	1.26	2.16	0.02	0.22	-0.15	0.01	-0.37	-0.04	-0.16	0.02	2.98
The Gambia	2.34	3.42	0.07	0.5	-0.25	0	-1.17	0.07	-0.25	0.03	4.77
Ghana	1.61	1.9	0.05	0.2	-0.15	0.01	-0.39	-0.01	-0.2	0.05	3.06
Guinea	1.75	2.55	0.02	0.57	-0.17	0	-0.85	-0.08	-0.19	0.01	3.6
Guinea-Bissau	2.37	4.54	0.06	0.89	-0.28	0	-1.46	-0.13	-0.28	0.08	5.78
Liberia	2.03	2.66	-0.03	0.13	-0.19	0.02	-1.21	-0.06	-0.17	0.05	3.24
Mali	1.72	3.26	0.07	0.67	-0.21	-0.01	-1.01	-0.08	0.11	0.02	4.53
Mauritania	2.47	2.74	0.12	0.07	-0.23	0.02	-0.72	-0.06	0.28	-0.03	4.64
Niger	1.41	3.47	0.18	0.81	-0.2	0.02	-1.24	-0.37	0.18	0.03	4.29
Nigeria	0.96	1.79	0.09	0.26	-0.09	0.02	-0.24	0.01	-0.11	0.05	2.74
São Tomé and Príncipe	1.44	1.72	0.02	0.12	-0.14	-0.03	-0.45	0	0.27	0.06	3.03
Senegal	2.14	2.64	0.08	0.45	-0.21	0.01	-0.77	-0.08	-0.08	0.03	4.22
Sierra Leone	1.75	2.53	0	0.53	-0.18	0.01	-0.98	-0.03	-0.19	0	3.43
Togo	1.53	2.17	0.05	0.43	-0.16	0	-0.78	-0.02	-0.2	0.03	3.05
South Sudan	1.53	2.37	0.07	0.38	-0.36	0.02	-0.1	-0.77	-0.17	0.02	2.99

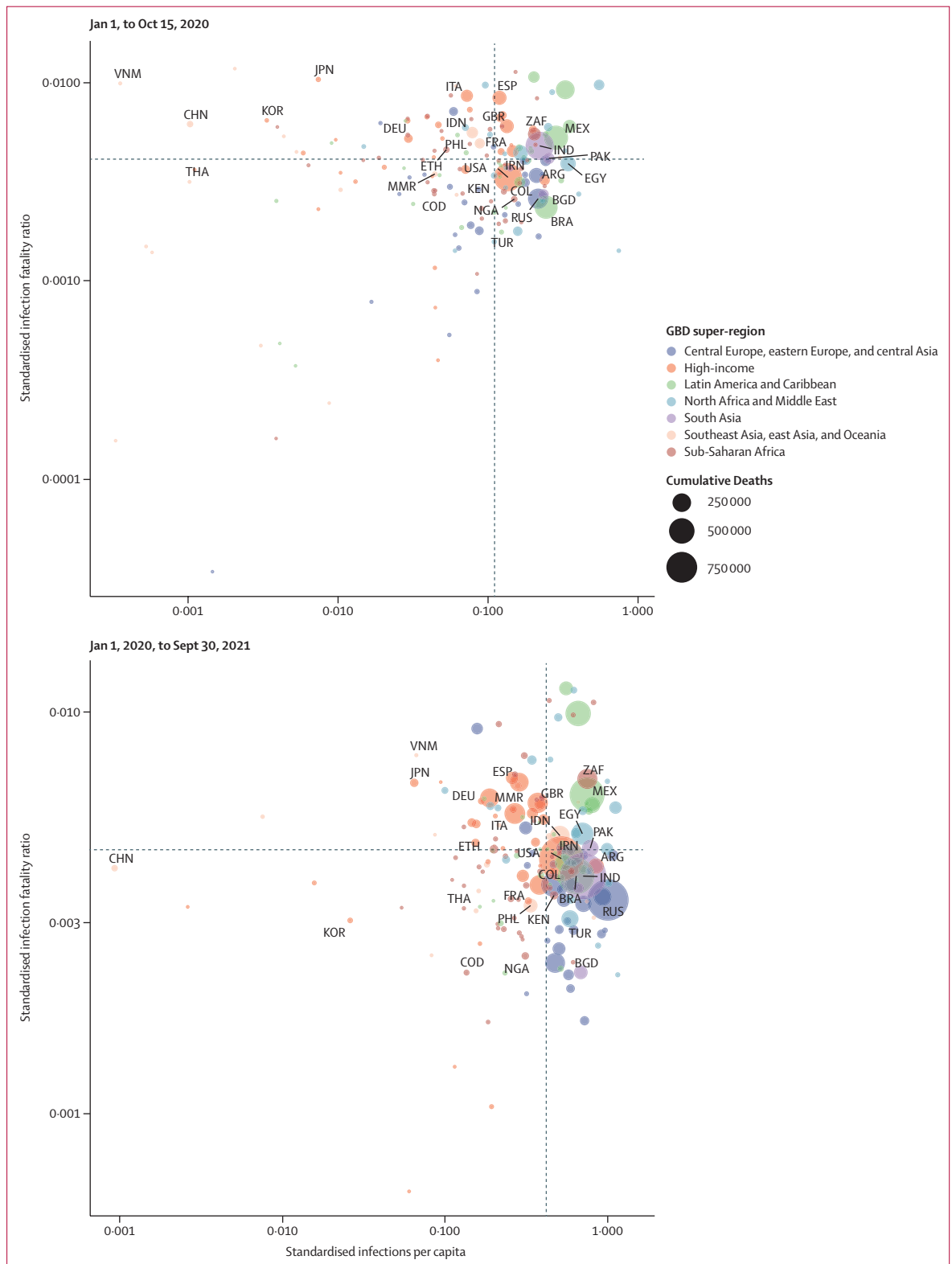
**Figure 1: Decomposition of difference in standardised cumulative SARS-CoV-2 infections per capita and IFR**  
 (A) Decomposition of the difference between cumulative and standardised cumulative SARS-CoV-2 infections per capita. The first column represents the number of unadjusted infections per capita, and each subsequent column represents the change in adjusted cumulative infections per capita that can be accounted for by seasonality, altitude, GDP per capita, population density, and a proxy for pre-exposure to betacoronavirus; the last column represents the adjusted infections per capita. The infections per capita metrics are colour-coded based on their severity relative to all other countries, with red representing higher cumulative infections per capita and green representing lower cumulative infections per capita (unadjusted and adjusted). (B) Decomposition of the difference between IFR and standardised IFR. The first column represents the raw IFR, and each subsequent column represents the proportion of IFR that can be accounted for by age structure, air pollution, BMI, cancer prevalence, COPD prevalence, GDP per capita, population density, a proxy for pre-exposure to betacoronavirus, and smoking prevalence; the last column represents the adjusted IFR. The IFR metrics are colour-coded based on their severity relative to all other countries, with red representing higher IFR and green representing IFR (raw and adjusted). BMI=body-mass index. COPD=chronic obstructive pulmonary disease. GDP=gross domestic product. IFR=infection-fatality ratio.

**Figure 2: Standardised infections per capita and standardised infection-fatality ratios**

The top panel shows the relationship between adjusted infections per capita and adjusted infection-fatality ratios from Jan 1, 2020, to Sept 30, 2021. The bottom panel shows the relationship between adjusted infections per capita and adjusted infection-fatality ratios from Jan 1, 2020, to Oct 15, 2020.

The size of each circle represents the magnitude of cumulative deaths.

ARG=Argentina.  
 BGD=Bangladesh. BRA=Brazil.  
 CHN=China. COD=Democratic Republic of the Congo.  
 COL=Colombia.  
 DEU=Germany. EGY=Egypt.  
 ESP=Spain. ETH=Ethiopia.  
 FRA=France. GBD=Global Burden of Diseases, Injuries, and Risk Factors Study.  
 GBR=UK. IDN=Indonesia.  
 IND=India. IRN=Iran. ITA=Italy.  
 JPN=Japan. KEN=Kenya.  
 KOR=South Korea.  
 MEX=Mexico.  
 MMR=Myanmar.  
 NGA=Nigeria. PAK=Pakistan.  
 PHL=Philippines. RUS=Russian Federation. THA=Thailand.  
 TUR=Turkey. USA=United States of America.  
 VNM=Vietnam.  
 ZAF=South Africa.





Portugal, and Spain (figure 1B). The countries with the largest decreases in IFR due to young age profile (and therefore saw an increase in IFR when age standardised) were Afghanistan, Mozambique, and Zambia (figure 1B). After adjusting for age, variation in BMI was significantly associated with age-standardised IFR, accounting for 1.1% (0.2–2.6), as was GDP per capita, accounting for 3.1% (0.3–8.6). 44.4% (29.2–61.7) of cross-national variation in IFR could not be explained (table 2). A 10% increase in BMI was associated with an increase in age-standardised IFR of 17.4% (6.5–32.0;  $p < 0.0001$ ). If these associations are causal and all countries had national BMI that was equal to or less than that of the global 25th percentile, these associations suggest global standardised IFR could be reduced by 11.1% (2.1–20.6).

High variation in cross-country infection rates and IFR persisted, even after standardising for key factors such as seasonality, age, BMI, and other factors already described (figure 2). Between Jan 1, 2020, and Sept 30, 2021, countries such as Iceland and Singapore were largely successful in preventing infection and death (figure 2). On the contrary, countries such as India, Bolivia, and Peru had high standardised infection rates and high IFRs (figure 2). Taiwan and Vietnam did well in preventing infections yet had high IFRs (figure 2). Meanwhile, Georgia and Qatar had the opposite experience, with less success preventing infection, but low IFRs (figure 2).

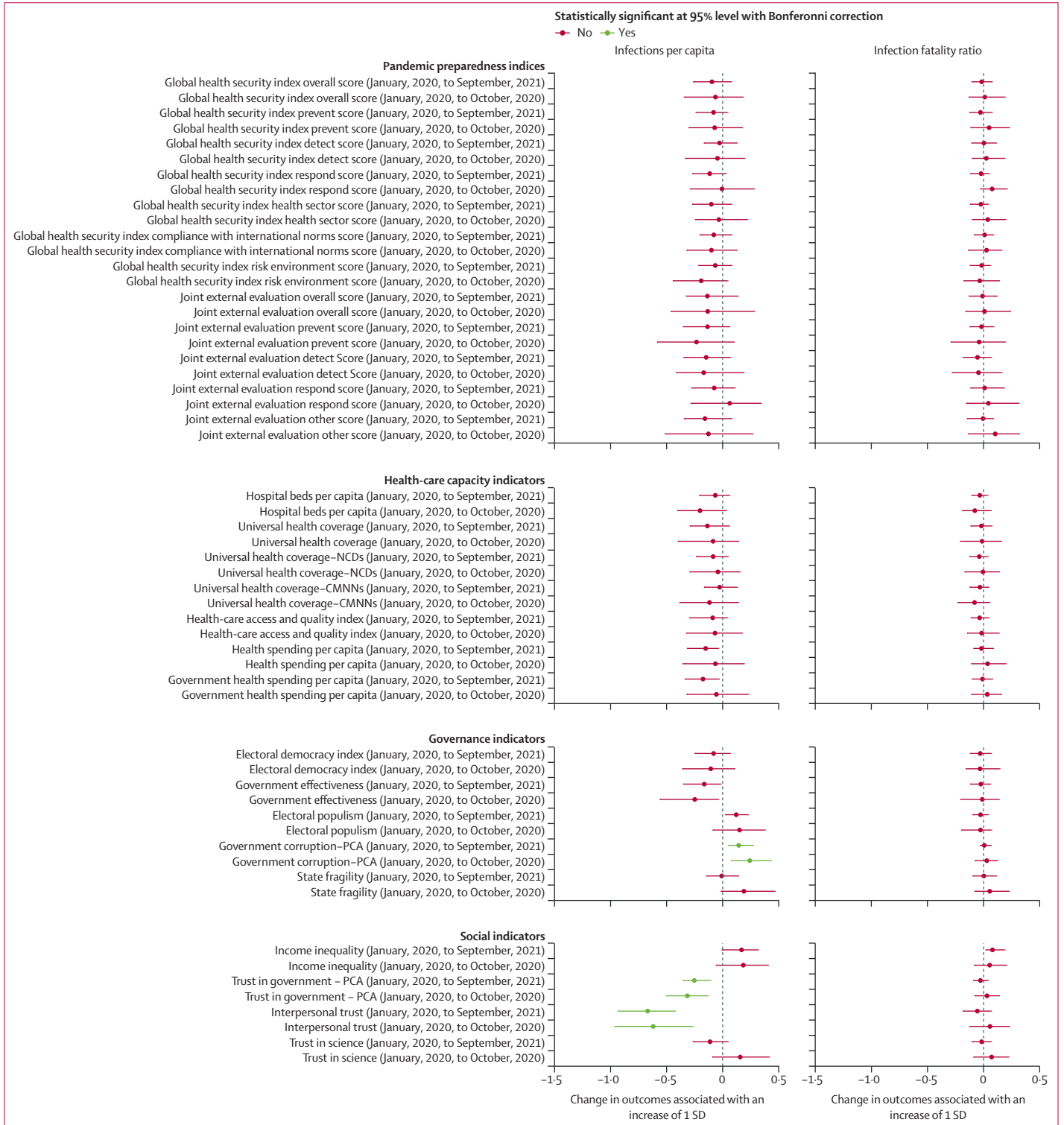
Traditional pandemic preparedness indices, such as the JEE and GHS Index (and their components), were not associated with standardised infection rates or standardised IFRs (figure 3). Similarly, health-care capacity indicators were not favourably associated with standardised infection rates or IFRs (figure 3). More government corruption was associated with higher levels of standardised infections throughout the pandemic, and no other governance variables were associated with standardised IFR (figure 3). Finally, trust in government and interpersonal trust were associated with standardised infection rates, for both the first 10 months of the pandemic and the entire pandemic until Sept 30, 2021 (figure 3). Moreover, the magnitude of these associations was substantive and persistent across nearly all of the sensitivity analyses (appendix p 47). If our modelled associations are causal, an increase in trust of governments such that all countries had societies that attained at least the amount of trust in government or interpersonal trust measured in Denmark, which is in the 75th percentile across these spectrums, might have reduced global infections by 12.9% (95% UI 5.7–17.8) for government trust and 40.3% (24.3–51.4) for interpersonal trust. The appendix (p 14) reports the correlation across all of the health-care, governance, and social indicators assessed to provide information about how these factors might be related. Crucially, low interpersonal trust is highly correlated with income inequality and government corruption.

To assess how government trust, interpersonal trust, and government corruption might have contributed to

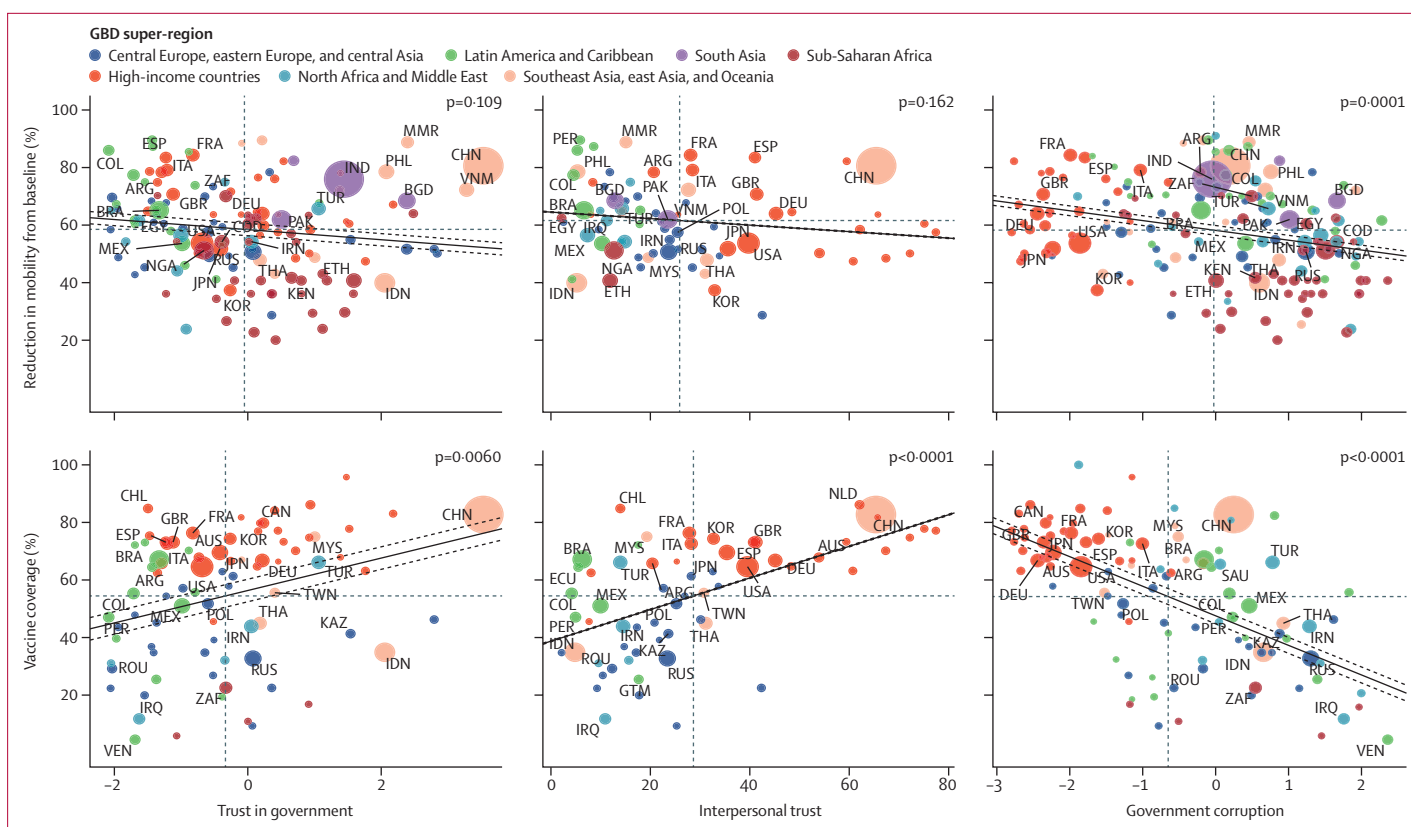
reductions in infection rates, we assessed the association between these factors and rates of COVID-19 vaccine coverage and reductions in mobility (figure 4). More interpersonal trust ( $p < 0.0001$ ), more government trust ( $p = 0.0060$ ), and less government corruption ( $p < 0.0001$ ) were associated with greater COVID-19 vaccine coverage (as of Sept 30, 2021). Less government corruption was also associated with greater reduction in mobility ( $p = 0.0001$ ).

## Discussion

We draw four main conclusions from this study. First, unlike mask mandates, physical-distancing guidelines, and other policy responses, many of the contextual factors that explain variation in SARS-CoV-2 infections and IFR are not factors that can be readily influenced by policy makers. For infections, those factors are environmental seasonality, altitude, and GDP per capita. Percentage of population living below 100 m and GDP per capita explained a large proportion of cross-country variation in infections. Infections rise during winter—the so-called flu season—and are, more precisely, associated with the relative risk of pneumonia. Similarly, occurrence of pneumonia and other lower respiratory infections is greater at higher altitudes. Explanations for this risk include climatic factors such as increased humidity, as well as seasonal behavioural modifications influencing spread, such as time spent indoors.<sup>29–31</sup> For IFR, the dominant significant factors explaining cross-country variation are age structure, GDP per capita, and BMI. Age structure alone explains the largest proportion of cross-country variation in IFR globally. Much research on COVID-19 has shown that with each year of life lived, the relative risk of mortality with infection increases dramatically,<sup>35,36</sup> and this increase in risk goes beyond simply increased rates of other competing risks. Some research has shown that lower mortality for younger patients might be driven by molecular differences that allow younger patients to control the viral load, one predictor of mortality.<sup>37</sup> Despite the importance of age, the effect of modifiable health risks in this analysis confirms previous research findings on the important role of high BMI,<sup>38</sup> and suggests changes to smoking prevalence<sup>39</sup> and ambient air pollution<sup>40</sup> could influence outcomes during this pandemic. The prevalence of these risks related to non-communicable diseases is amenable to national and international health policy and represents an area of potential investment for mitigating the effects of future pandemics.<sup>41</sup> Tobacco control policies, including increases in taxes and bans on advertising, have proven effective and cost-efficient in poor and wealthy nations alike.<sup>42–44</sup> Strategies to promote lower BMI might include subsidising healthy food, such as fresh fruits, nuts, and vegetables, and taxing unhealthy foods such as sugar-sweetened beverages.<sup>45–47</sup> Increasing reliance on non-polluting, renewable energy sources and ramping up air-quality monitoring have been central to progress in reducing ambient air pollution, even in difficult settings.<sup>48</sup> In addition to risk-specific interventions, progress might



**Figure 3: Associations between key preparedness, capacity, governance, and social indicators and infection rates and IFR**  
 The left column shows estimated associations between indicators of key contextual factors (pandemic preparedness indices, health-care capacity indicators, governance indicators, and social indicators) and infections per capita. The right column shows estimated associations between key contextual factors and the infection-fatality ratio. Red indicates the association is not significant and green indicates the association is significant at a 95% CI with a Bonferonni correction. CMNN=communicable, maternal, neonatal, and nutritional disease. IFR=infection-fatality ratio. NCD=non-communicable disease. PCA=principal component analysis.



**Figure 4: Association between trust and government corruption, and vaccine coverage and change in mobility**  
 The size of each circle represents total population. The solid line represents the fit of the linear regression for the two variables, and dotted lines represent the 95% CI. GBD=Global Burden of Diseases, Injuries, and Risk Factors Study.

also be advanced by working with WHO and other intergovernmental institutions on advancing international, national, and community-level strategies to counter the common commercial drivers behind tobacco use prevalence, obesity, and air pollution.<sup>49</sup>

The second major conclusion of this study is that important indicators of health-care capacity (the UHC effective coverage index and the HAQ Index) and of pandemic preparedness and response (JEE and GHS Index) were not correlated with cross-country variation in SARS-CoV-2 infections or IFR. The disconnect that exists between COVID-19 outcomes and the composite estimates of JEE and GHS Index scores also holds when the analysis is done on index components devoted to detection, prevention, and response, as well as the GHS Index health sector, commitment to international norms, and risk environment indices.

This analysis suggests that the JEE, GHS Index, and the UHC effective coverage index do not simply reflect capacities otherwise required for effective pandemic prevention and response, but fail to account for the consequences of poor leadership and dysfunctional political environments. A high ranking on the leading measures of health system capacity and pandemic preparedness has not only been insufficient for success in

this pandemic, but also unnecessary. Various countries, including Burundi, the Philippines, and the Dominican Republic, are all examples of countries that rank low in GHS Index and JEE overall scores, and UHC effective coverage and HAQ Index scores, but so far have maintained low rates of standardised infections and IFR. We can further conclude that whatever proportion of cross-country variation in infections and IFR might be policy amenable, these existing measures of health-care and pandemic preparedness capacity offer no explanation.

The JEE, GHS Index, and measures of UHC are intended to be tools for identifying gaps in national capacity to direct financial and political support appropriately and were never intended to predict pandemic outcomes. JEEs were developed as a mechanism to identify gaps in a country's preparedness for developing National Action Plans and were not designed for cross-country comparability. Additionally, the aggregate measure is a weighting of the components and was not scored by the countries themselves. More than 100 nations have undertaken voluntary JEEs, and more than 60 countries developed National Action Plans for Health Security; the benefits of such exercises extend beyond preparing for the COVID-19 pandemic. Similarly, the 2019 GHS Index focuses on a national capacity and

preparedness to prevent, limit, and respond to epidemic spread, with what the scores measures potentially having benefits associated with future pandemics. Measures assessed by these metrics, such as laboratory capacity, that have not yet been shown to drive outcomes in a pandemic, might well prove important against future emerging disease threats because such measures were not intended to predict outcomes for any one specific pandemic.

The third major conclusion of this study is that higher levels of trust (government and interpersonal) had large, statistically significant associations with fewer infections for the entire study period, but not with global variation in IFR. Less government corruption had a smaller but still statistically significant association with fewer infections and has no association with global variation in IFR. No other social factors (economic inequality or trust in science), state capacity measures (government effectiveness or state fragility), or features of political systems (electoral democracy or populism) had a statistically significant association with cross-country variation in infections or IFR. One way to quantify the contribution of trust to COVID-19 outcomes is with a counterfactual: if these associations are causal and all countries improved trust in government to the level of Denmark (approximately the 75th percentile of measured countries), this analysis suggests 12·9% fewer global infections would have occurred. Similarly, if all countries improved interpersonal trust to the same level (the 75th percentile of measured countries), the effect would be even larger—40·3% fewer global infections would have occurred.

These results support previous research that has found an association between trust and compliance with public health guidance.<sup>50-53</sup> When a virus emerges with high potential for spread, governments must be able to convince citizens to adopt essential public health measures. Doing so often requires behaviour change, from mask wearing and physical-distancing rules to following quarantine policies. This study accords with previous research that suggests that the success of that effort depends on two forms of trust: trust in governments<sup>54,55</sup> and interpersonal trust. Collectively, trust among people and in their government can change behaviour such that if people respond to directives and take protective health measures, they might expect other members of the community to do the same.<sup>56,57</sup> In much of the world, public health is a local, community-based endeavour and, in that context, the outsized role of interpersonal trust in this pandemic is unsurprising. Previous research has shown that public corruption contributes to lower trust in government and social institutions, which might reduce compliance with public health guidance and policies.<sup>38</sup> Other smaller and preliminary studies have suggested links between trust in government, interpersonal trust, and public corruption and COVID-19 outcomes.<sup>21,59-63</sup>

The fourth major conclusion of this study is that one specific pathway through which government and

interpersonal trust and corruption affect COVID-19 outcomes might be through national vaccination rates. Lower levels of government corruption are associated with reduced mobility, which might signify compliance with physical-distancing guidance and stay-at-home orders. Further research and more complete global data on national adherence to non-pharmaceutical interventions might help identify the other specific pathways by which government and interpersonal trust have affected COVID-19 outcomes, particularly for the first 10 months of the pandemic before vaccines were widely available. Previous surveys in Liberia and the Democratic Republic of the Congo in Ebola outbreaks showed that trust in government was associated with compliance with government-recommended mitigation strategies, such as keeping physical distance and accepting vaccines.<sup>54,64</sup> Surveys from Italy, the Netherlands, and Switzerland during the 2009 H1N1 influenza pandemic found that government trust was associated with increased handwashing, physical distancing, vaccination, and other recommended behaviours.<sup>50-52</sup>

Fortunately, trust is something that can be fostered, even in a crisis. Governments and communities maintain or increase the public's trust by providing accurate, timely information about the pandemic, even when that information is still limited, and by clearly communicating the risk and relevant vulnerabilities.<sup>65</sup> The identity of the messenger in risk communication can also improve or damage trust.<sup>66</sup> The Ebola epidemic in west Africa was curtailed by rebuilding the public's trust in the government response. In Liberia, Ebola survivors were celebrated in communities, while community youth leaders, pastors, and imams were trained to conduct daily household surveillance and identify infected patients. In Sierra Leone, local community-liaison teams working in collaboration with WHO increased acceptance of the Ebola vaccine trials during and after the outbreak. In the COVID-19 pandemic, by contrast, some nations with historically low levels of government trust opted to promote politicians over public health experts for risk communication in the crisis, which might have contributed to reduced compliance with public health guidance and worsening health outcomes.<sup>67</sup>

Trust is a shared resource that enables networks of people to do collectively what individual actors cannot.<sup>68</sup> It can be fostered in between crises through sustained investment. Previous research has assessed that trusting relations affect health outcomes through various forms of social capital, including bonding social capital (among networks of people who consider themselves to be similar), bridging social capital (among members of a network who perceive themselves as differing by age, racial or ethnic group, class, or other sociodemographic characteristic), and linking social capital (across power or authority gradients such as the relationships between people and their law enforcement, health-care providers, medical researchers, or bankers).<sup>68-71</sup> Trusting relationships in all three of these forms of social capital

have clearly affected health outcomes in the COVID-19 pandemic. Identifying which forms of social capital the role of trust has been the most important in this pandemic is beyond the scope of this paper, but the appendix (p 14) shows the correlations among the health-care, governance, and social indicators considered in this analysis and might provide some preliminary clues. For instance, low interpersonal trust is most correlated with income inequality and government corruption, suggesting those who are economically and socially disadvantaged and confront a society stacked against them might be naturally less inclined to trust others.<sup>72</sup> The findings of future research should inform the longer-term potential application of the strategies used to promote resilience in disaster response and recovery by deepening trust within and between communities, from the economically and social disadvantaged and up to those in authority.<sup>73</sup>

This analysis has several limitations. First, the explanatory variables come from various sources that include population-based opinion surveys, a survey of expert opinions, reported government statistics, and modelled estimates. The findings for each explanatory variable should be assessed considering the quality of the data source. Second, although we attempted to propagate sources of uncertainty into the final results by running the analysis on each of 100 samples, an estimate of uncertainty was not available for most explanatory variables. Third, we prioritised explanatory value when deciding how to specify the functional forms of the models. Stage 1 and stage 2 variables are assumed to have log-log relationships with their respective outcomes, and the variables in stage 1, stage 2, and stage 3 are assumed to be independent. A fuller model could result in the use of interactions and non-linear effects, but we chose simple models by design and because of limitations in data. Fourth, we did not include country-specific response variables such as mask use, changes in mobility, testing, vaccination, and mandate imposition in our primary analysis of infections and IFR, given the challenges in identifying causal relationships using cross-sectional models. We included these variables in our supplementary analyses (appendix p 51) and in our stage 3 analysis but note that the temporality of these associations is not fully understood. Future research using time-series methods is needed to better understand how response measures influenced COVID-19 outcomes. Fifth, we adjusted for underlying influences on COVID-19 outcomes, including age structure and seasonality, but were unable to adjust for differentials in outcomes by sex given data limitations; future work is needed to better understand the degree of variability in outcomes due to differing sex population structures. Sixth, we include the most up-to-date information on variants and the most recent data but note that continually changing circumstances of the pandemic might influence these results. Seventh, although stage 1 was completed using subnational and national data, we focused our reporting and stage 2 and

stage 3 analyses at the national level to focus on factors that could be influenced by national policy. Additional research is needed to better understand within-country variability, which is likely to be equally important in understanding differences in COVID-19 outcomes. Finally, this is an ecological analysis and was not designed to provide information about the causes of COVID-19 variation. Although we hope these results will spur discussion about the drivers of COVID-19 outcomes, a causal analysis would require more data and a different study design.

Uncertainty over the conditions that contribute to variation across countries in COVID-19 outcomes undermines efforts to convince global partners and policy makers to invest in preparing for future pandemics. Large, unexplained variation in differences in infections across countries speaks to the importance of further research in this area. In the meantime, this analysis identifies factors that explain some of the variation in the COVID-19 pandemic and suggests areas for potential investment in preparing for the next pandemic threat. Governments should invest in risk communication and community engagement strategies to boost the confidence that individuals have in government guidance in public health crises, especially in settings with historically low levels of government and interpersonal trust. Additionally, health promotion to address key modifiable risks might be an important condition for reducing fatalities in some pandemic scenarios.

#### COVID-19 National Preparedness Collaborators

Thomas J Bollyky\*, Erin N Hulland\*, Ryan M Barber, James K Collins, Samantha Kiernan, Mark Moses, David M Pigott, Robert C Reiner Jr, Reed J D Sorensen, Cristiana Abbafati, Christopher Adolph, Adrien Allorant, Joanne O Amlag, Aleksandr Y Aravkin, Bree Bang-Jensen, Austin Carter, Rachel Castellano, Emma Castro, Suman Chakrabarti, Emily Combs, Xiaochen Dai, William James Dangel, Carolyn Dapper, Amanda Deen, Bruce B Duncan, Lucas Earl, Megan Erickson, Samuel B Ewald, Tatiana Fedosseva, Alize J Ferrari, Abraham D Flaxman, Nancy Fullman, Emmanuela Gakidou, Bayan Galal, John Gallagher, John R Giles, Gaorui Guo, Jiawei He, Monika Helak, Bethany M Huntley, Bulat Idrisov, Casey Johanns, Kate E LeGrand, Ian D Letourneau, Akiaja Lindstrom, Emily Linebarger, Paulo A Lotufo, Rafael Lozano, Beatrice Magistro, Deborah Carvalho Malta, Johan Månsson, Ana M Mantilla Herrera, Fatima Marinho, Alemnesh H Mirkuzie, Ali H Mokdad, Lorenzo Monasta, Paulami Naik, Shuhei Nomura, James Kevin O'Halloran, Christopher M Odell, Latera Tesfaye Olana, Samuel M Ostroff, Maja Pasovic, Valeria Maria de Azeredo Passos, Louise Penberthy, Grace Reinke, Damian Francesco Santomauro, Maria Inês Schmidt, Aleksei Sholokhov, Emma Spurlock, Christopher E Troeger, Elena Varavikova, Anh T Vo, Theo Vos, Rebecca Walcott, Ally Walker, Simon D Wigley, Charles Shey Wiysonge, Nahom Alemseged Worku, Yifan Wu, Sarah Wulf Hanson, Peng Zheng, Simon I Hay, Christopher J L Murray, and Joseph L Dieleman. \*Joint first authors, contributed equally.

#### Affiliations

Council on Foreign Relations, Washington, DC, USA (T J Bollyky JD, S Kiernan BA); Institute for Health Metrics and Evaluation (E N Hulland MPH, R M Barber BS, J K Collins BS, M Moses MHS, D M Pigott PhD, R C Reiner Jr PhD, R J D Sorensen MPH, A Allorant PhD, J O Amlag MPH, A Y Aravkin PhD, B Bang-Jensen MA, A Carter MPH, R Castellano MA, E Castro MS, S Chakrabarti MA, E Combs BA, X Dai PhD, W J Dangel MD, C Dapper MA, A Deen MPH, L Earl MSc, M Erickson MA, S B Ewald MS, T Fedosseva MSc,

A J Ferrari PhD, A D Flaxman PhD, N Fullman MPH, Prof E Gakidou PhD, J Gallagher MPA, J R Giles PhD, G Guo MPH, J He MSc, M Helak BA, B M Huntley BA, C Johanns BS, K E LeGrand MPH, I D Letourneau BA, E Linebarger BA, Prof R Lozano MD, J Månsson MS, A H Mokdad PhD, P Naik MSPH, J K O'Halloran MA, C M Odell MPP, S M Ostroff PhD, M Pasovic MEd, L Penberthy MS, G Reinke MA, D F Santomauro PhD, A Sholokhov MSc, E Spurlock MPH, C E Troeger MPH, A T Vo BSc, Prof T Vos PhD, A Walker MA, Y Wu MPH, S Wulf Hanson PhD, Prof P Zheng PhD, Prof S I Hay DSc, Prof C J L Murray DPhil, J L Dieleman PhD, Department of Global Health (E N Hulland MPH, R J D Sorensen MPH, S Chakrabarti MA), Department of Health Metrics Sciences, School of Medicine (D M Pigott PhD, R C Reiner Jr PhD, A Y Aravkin PhD, X Dai PhD, A D Flaxman PhD, Prof E Gakidou PhD, Prof R Lozano MD, A H Mokdad PhD, Prof T Vos PhD, Prof P Zheng PhD, Prof S I Hay DSc, Prof C J L Murray DPhil, J L Dieleman PhD), Department of Political Science (Prof C Adolph PhD), Center for Statistics and the Social Sciences (Prof C Adolph PhD), Department of Applied Mathematics (A Y Aravkin PhD), Henry M Jackson School of International Studies (S M Ostroff PhD), Evans School of Public Policy & Governance (R Walcott MPH), University of Washington, Seattle, WA, USA; Department of Juridical and Economic Studies (C Abbafati PhD), La Sapienza University, Rome, Italy; Postgraduate Program in Epidemiology (Prof B B Duncan MD, Prof M I Schmidt MD), Federal University of Rio Grande do Sul, Porto Alegre, Brazil; School of Public Health (A J Ferrari PhD, A Lindstrom MEpi, A M Mantilla Herrera PhD, D F Santomauro PhD), The University of Queensland, Brisbane, QLD, Australia; Department of Social and Behavioral Sciences (E Spurlock MPH), Yale University, New Haven, CT, USA (B Galal BS); Infectious Diseases Department (B Idrisov MD), Bashkir State Medical University, Ufa, Russia; Laboratory of Public Health Indicators Analysis and Health Digitalization (B Idrisov MD), Moscow Institute of Physics and Technology, Moscow, Russia; School of Public Health (A Lindstrom MEpi), West Moreton Hospital Health Services (A M Mantilla Herrera PhD), Policy and Epidemiology Group (D F Santomauro PhD), Queensland Centre for Mental Health Research, Wacol, QLD, Australia; Department of Medicine (Prof P A Lotufo DrPH), University of São Paulo, São Paulo, Brazil; Munk School of Global Affairs and Public Policy (B Magistro PhD), University of Toronto, Toronto, ON, Canada; Department of Maternal and Child Nursing and Public Health (Prof D C Malta PhD), Department of Public Health (F Marinho PhD), Faculty of Medical Sciences of Minas Gerais (Prof V M d Passos PhD), Federal University of Minas Gerais, Belo Horizonte, Brazil; Department of Public Health (F Marinho PhD), Vital Strategies, São Paulo, Brazil; National Data Management Center for Health (NDMC) (A H Mirkuzie PhD, N A Worku MSc), Ethiopian Public Health Institute, Addis Ababa, Ethiopia; Center for International Health (A H Mirkuzie PhD), University of Bergen, Bergen, Norway; Clinical Epidemiology and Public Health Research Unit (L Monasta DSc), Burlo Garofolo Institute for Maternal and Child Health, Trieste, Italy; Department of Health Policy and Management (S Nomura PhD), Keio University, Tokyo, Japan; Department of Global Health Policy (S Nomura PhD), University of Tokyo, Tokyo, Japan; School of Electrical and Computer Engineering (L T Olana BSc), Addis Ababa University, Addis Ababa, Ethiopia; Central Research Institute of Cytology and Genetics (E Varavikova PhD), Federal Research Institute for Health Organization and Informatics of the Ministry of Health (FRIHOI), Moscow, Russia; Department of Philosophy (S D Wiggley PhD), Bilkent University, Ankara, Turkey; Cochrane South Africa (Prof C S Wiysonge MD), South African Medical Research Council, Cape Town, South Africa; School of Public Health and Family Medicine (Prof C S Wiysonge MD), University of Cape Town, Cape Town, South Africa.

#### Contributors

Members of the core Institute for Health Metrics and Evaluation (IHME) and Council on Foreign Relations research team (T J Bolyky, J L Dieleman, E N Frame, S Hay, M Moses, D Pigott, and R J D Sorensen) had full access to the underlying data used to generate estimates presented in this Article. All other authors had access to and reviewed estimates as part of the research evaluation process, which includes additional stages of

internal IHME and external formal collaborator review. The corresponding author had final responsibility for the decision to submit the manuscript for publication. Contributions for all authors can be found in the appendix (p 57).

#### Declaration of interests

C Adolph reports support from the Beneficus Foundation as funding support for collection of data on state-level physical-distancing policies in the USA. T J Bolyky reports support from Bloomberg Philanthropies for the Council on Foreign Relations; grants or contracts from the Bill & Melinda Gates Foundation for the Council on Foreign Relations; consulting fees from the Coalition for Epidemic Preparedness Innovations and from the Bill & Melinda Gates Foundation as personal payments; payment or honoraria for lectures, presentations, speakers bureaus, manuscript writing, or educational events from the Varieties of Democracy Project, Stanford University, and Emory University, all outside the submitted work. J L Dieleman reports support from the Bill & Melinda Gates Foundation, J Stanton, T Gillespie, and J and E Nordstrom. A D Flaxman reports grants or contracts from the Alfred P Sloan Foundation, Bill & Melinda Gates Foundation, NORC, National Science Foundation, and the US Census Bureau; consulting fees from Kaiser Permanente; stock or stock options in Agathos; other support from Johnson & Johnson, Merck for Mothers, Sanofi, and Swiss Re, all outside the submitted work. N Fullman reports receiving funding from WHO as a consultant from June to September, 2019, and Gates Ventures since June, 2020, all outside the submitted work. S Nomura reports support from Ministry of Education, Culture, Sports, Science and Technology of Japan (MEXT), outside the submitted work. V M D Passos reports consulting fees from the Global Grant Program as personal payment through the FUNDEP, Universidade Federal de Minas Gerais, outside the submitted work. D M Pigott reports support from the Bill & Melinda Gates Foundation; and grants or contracts from the Bill & Melinda Gates Foundation, outside the submitted work. All other authors declare no competing interests.

#### Data sharing

Data used in this analysis are available to download from the Global Health Data Exchange website, at [http://ghdx.healthdata.org/record/ihme-data/covid\\_19\\_pandemic\\_preparedness](http://ghdx.healthdata.org/record/ihme-data/covid_19_pandemic_preparedness).

#### Acknowledgments

T J Bolyky acknowledges support from Bloomberg Philanthropies. A J Ferrari acknowledges support from a National Health and Medical Research Council Early Career Fellowship Grant APP1121516 and is employed by the Queensland Centre for Mental Health Research, which receives core funding from the Queensland Department of Health. S Nomura acknowledges the Ministry of Education, Culture, Sports, Science and Technology of Japan (MEXT). R C Reiner Jr acknowledges partial support by the National Science Foundation (FAIN: 2031096). D F Santomauro is employed by the Queensland Centre for Mental Health Research, which receives core funding from the Department of Health, Queensland Government. C S Wiysonge is supported by the South African Medical Research Council.

#### References

- 1 The Independent Panel for Pandemic Preparedness and Response. COVID-19: make it the last pandemic. May 2021. <https://recommendations.theindependentpanel.org/main-report/main-report/> (accessed June 28, 2021).
- 2 Stolberg SG. As pandemic recedes in US, calls are growing for an investigative commission. *The New York Times*. June 16, 2021.
- 3 Bolyky TJ, Patrick SM. Improving pandemic preparedness: lessons from COVID-19. Council on Foreign Relations. October, 2020. <https://www.cfr.org/report/pandemic-preparedness-lessons-COVID-19/> (accessed June 28, 2021).
- 4 Ravi SJ, Warmbrod KL, Mullen L, et al. The value proposition of the Global Health Security Index. *BMJ Glob Health* 2020; 5: e003648.
- 5 Razavi A, Erond N, Okereke E. The Global Health Security Index: what value does it add? *BMJ Glob Health* 2020; 5: e002477.
- 6 Nuzzo JB, Bell JA, Cameron EE. Suboptimal US response to COVID-19 despite robust capabilities and resources. *JAMA* 2020; 324: 1391–92.
- 7 Kock RA, Karesh WB, Veas F, et al. 2019-nCoV in context: lessons learned? *Lancet Planet Health* 2020; 4: e87–88.

- 8 Kandel N, Chungong S, Omaar A, Xing J. Health security capacities in the context of COVID-19 outbreak: an analysis of International Health Regulations annual report data from 182 countries. *Lancet* 2020; **395**: 1047–53.
- 9 Courtemanche C, Garuccio J, Le A, Pinkston J, Yelowitz A. Strong social distancing measures in the United States reduced the COVID-19 growth rate. *Health Aff (Millwood)* 2020; **39**: 1237–46.
- 10 Kwon S, Joshi AD, Lo CH, et al. Association of social distancing and face mask use with risk of COVID-19. *Nat Commun* 2021; **12**: 3737.
- 11 Chernozhukov V, Kasahara H, Schrimpf P. Causal impact of masks, policies, behavior on early covid-19 pandemic in the U.S. *J Econom* 2021; **220**: 23–62.
- 12 Mukherjee S. Why does the pandemic seem to be hitting some countries harder than others? *The New Yorker*. March 1, 2021. <https://www.newyorker.com/magazine/2021/03/01/why-does-the-pandemic-seem-to-be-hitting-some-countries-harder-than-others> (accessed June 4, 2021).
- 13 Wang H, Welgan C, Marczak L. Estimating excess mortality due to the SARS-CoV-2 pandemic: a systematic analysis of COVID-19 related mortality between January 1, 2020 and September 26. *Lancet* (in press).
- 14 Institute for Health Metrics and Evaluation. Estimation of total mortality due to COVID-19. May 13, 2021. <http://www.healthdata.org/special-analysis/estimation-excess-mortality-due-covid-19-and-scalars-reported-covid-19-deaths> (accessed June 15, 2021).
- 15 Crosby S, Dieleman JL, Kiernan S, Bollyky TJ. All bets are off for measuring pandemic preparedness. Think Global Health. Council on Foreign Relations. June 30, 2020. <https://www.thinkglobalhealth.org/article/all-bets-are-measuring-pandemic-preparedness> (accessed June 4, 2021).
- 16 Abbey EJ, Khalifa BAA, Oduwole MO, et al. The Global Health Security Index is not predictive of coronavirus pandemic responses among Organization for Economic Cooperation and Development countries. *PLoS One* 2020; **15**: e0239398.
- 17 GHS Index. COVID-19: identifying the most vulnerable countries using the GHS Index and Global Flight Data. March 13, 2020. <https://www.ghsindex.org/news/covid-19-identifying-the-most-vulnerable-countries-using-the-ghs-index-and-global-flight-data/> (accessed June 4, 2021).
- 18 GHS Index. The US and COVID-19: leading the world by GHS Index Score, not by response. April 27, 2020. <https://www.ghsindex.org/news/the-us-and-covid-19-leading-the-world-by-ghs-index-score-not-by-response/> (accessed June 4, 2021).
- 19 Haider N, Yavlinsky A, Chang YM, et al. The Global Health Security Index and Joint External Evaluation score for health preparedness are not correlated with countries' COVID-19 detection response time and mortality outcome. *Epidemiol Infect* 2020; **148**: e210.
- 20 Lee CT, Buissonnière M, McClelland A, Frieden TR. Association between preparedness and response measures and COVID-19 incidence and mortality. *medRxiv* 2021; published online Feb 3. <https://doi.org/10.1101/2021.02.02.21251013> (preprint).
- 21 Bosancianu CM, Hilbig H, Humphreys M, KC S, Lieber N, Scacco A. Political and social correlates of covid-19 mortality. *SocArXiv* 2020; published online June 16. <https://doi.org/10.31235/osf.io/ub3zd> (preprint).
- 22 Adamecz-Völgyi A, Szabó-Morvai Á. Confidence in public institutions is critical in containing the COVID-19 pandemic. *SSRN* 2021; published online June 25. <https://doi.org/10.2139/ssrn.3867690>.
- 23 Sorensen RJD, COVID-19 Forecasting Team. Variation in the COVID-19 infection-fatality ratio by age, time, and geography during the pre-vaccine era. *Lancet* (in press).
- 24 COVID-19 Cumulative Infection Collaborators, Barber RM. Estimating global, regional and national daily and cumulative infections with SARS-CoV-2 through September 22, 2021: a statistical analysis. *Lancet* (in press).
- 25 R Core Team. R: a language and environment for statistical computing. R Foundation for Statistical Computing. 2021. <https://www.R-project.org> (accessed Jan 27, 2022).
- 26 Stevens GA, Alkema L, Black RE, et al. Guidelines for Accurate and Transparent Health Estimates Reporting: the GATHER statement. *Lancet* 2016; **388**: e19–23.
- 27 Institute for Health Metrics and Evaluation. COVID-19: estimating the historical time series of infections. April 23, 2021. <http://www.healthdata.org/special-analysis/covid-19-estimating-historical-infections-time-series> (accessed June 15, 2021).
- 28 Wang H, Abbas KM, Abbasifard M, et al. Global age-sex-specific fertility, mortality, healthy life expectancy (HALE), and population estimates in 204 countries and territories, 1950-2019: a comprehensive demographic analysis for the Global Burden of Disease Study 2019. *Lancet* 2020; **396**: 1160–203.
- 29 Khan AJ, Hussain H, Omer SB, et al. High incidence of childhood pneumonia at high altitudes in Pakistan: a longitudinal cohort study. *Bull World Health Organ* 2009; **87**: 193–99.
- 30 Pérez-Padilla R, Franco-Marina F. The impact of altitude on mortality from tuberculosis and pneumonia. *Int J Tuberc Lung Dis* 2004; **8**: 1315–20.
- 31 Pérez-Padilla R, García-Sancho C, Fernández R, Franco-Marina F, López-Gatell H, Bojórquez I. The impact of altitude on hospitalization and hospital mortality from pandemic 2009 influenza A (H1N1) virus pneumonia in Mexico. *Salud Publica Mex* 2013; **55**: 92–95.
- 32 US Centers for Disease Control and Prevention. Science brief: evidence used to update the list of underlying medical conditions associated with higher risk for severe COVID-19. 2020. <https://www.cdc.gov/coronavirus/2019-ncov/science/science-briefs/underlying-evidence-table.html> (accessed Oct 27, 2021).
- 33 Josse J, Husson F. missMDA: a package for handling missing values in multivariate data analysis. *J Stat Softw* 2016; **70**: 1–31.
- 34 Reiner RC Jr, Barber RM, Collins JK, et al. Modeling COVID-19 scenarios for the United States. *Nat Med* 2021; **27**: 94–105.
- 35 COVID-19 Forecasting Team. Variation in the COVID-19 infection-fatality ratio by age, time and geography during the pre-vaccine era. *Lancet* (in press).
- 36 Mallapaty S. The coronavirus is most deadly if you are older and male—new data reveal the risks. *Nature* 2020; **585**: 16–17.
- 37 Mueller AL, McNamara MS, Sinclair DA. Why does COVID-19 disproportionately affect older people? *Aging (Albany NY)* 2020; **12**: 9959–81.
- 38 Popkin BM, Du S, Green WD, et al. Individuals with obesity and COVID-19: a global perspective on the epidemiology and biological relationships. *Obes Rev* 2020; **21**: e13128.
- 39 Patanavanich R, Glantz SA. Smoking is associated with COVID-19 progression: a meta-analysis. *Nicotine Tob Res* 2020; **22**: 1653–56.
- 40 Wu X, Nethery RC, Sabath MB, Braun D, Dominici F. Air pollution and COVID-19 mortality in the United States: strengths and limitations of an ecological regression analysis. *Sci Adv* 2020; **6**: eabd4049.
- 41 Bollyky TJ, Tohme S, Kiernan S. Noncommunicable diseases kill slowly in normal times and quickly in COVID-19 times. Council on Foreign Relations. 2021. <https://www.cfr.org/article/noncommunicable-diseases-kill-slowly-normal-times-and-quickly-covid-19-times> (accessed Sept 31, 2021).
- 42 Blecher E. The impact of tobacco advertising bans on consumption in developing countries. *J Health Econ* 2008; **27**: 930–42.
- 43 Daniels ME, Donilon TE, Bollyky TJ. The emerging global health crisis: noncommunicable diseases in low- and middle-income countries. Independent Task Force Report No 72. December, 2014. <https://www.cfr.org/report/emerging-global-health-crisis> (accessed June 7, 2021).
- 44 Kaiser K-A, Magno RR, Bredenkamp C. Sin tax reform in the Philippines: transforming public finance, health, and governance for more inclusive development. 2016. <https://documents.worldbank.org/en/publication/documents-reports/documentdetail/638391468480878595/Sin-tax-reform-in-the-Philippines-transforming-public-finance-health-and-governance-for-more-inclusive-development> (accessed June 7, 2021).
- 45 Taillie LS, Rivera JA, Popkin BM, Batis C. Do high vs low purchasers respond differently to a nonessential energy-dense food tax? Two-year evaluation of Mexico's 8% nonessential food tax. *Prev Med* 2017; **105S**: S37–42.
- 46 Mozaffarian D, Hao T, Rimm EB, Willett WC, Hu FB. Changes in diet and lifestyle and long-term weight gain in women and men. *N Engl J Med* 2011; **364**: 2392–404.
- 47 Afshin A, Peralva JL, Del Gobbo L, et al. The prospective impact of food pricing on improving dietary consumption: a systematic review and meta-analysis. *PLoS One* 2017; **12**: e0172277.
- 48 Landrigan PJ, Fuller R, Acosta NJR, et al. The Lancet Commission on pollution and health. *Lancet* 2018; **391**: 462–512.

- 49 Swinburn BA, Kraak VI, Allender S, et al. The global syndemic of obesity, undernutrition, and climate change: The *Lancet* Commission report. *Lancet* 2019; **393**: 791–846.
- 50 Prati G, Pietrantonio L, Zani B. Compliance with recommendations for pandemic influenza H1N1 2009: the role of trust and personal beliefs. *Health Educ Res* 2011; **26**: 761–69.
- 51 van der Weerd W, Timmermans DR, Beaujean DJ, Oudhoff J, van Steenberghe JE. Monitoring the level of government trust, risk perception and intention of the general public to adopt protective measures during the influenza A (H1N1) pandemic in the Netherlands. *BMC Public Health* 2011; **11**: 575.
- 52 Gilles I, Bangertner A, Clémence A, et al. Trust in medical organizations predicts pandemic (H1N1) 2009 vaccination behavior and perceived efficacy of protection measures in the Swiss public. *Eur J Epidemiol* 2011; **26**: 203–10.
- 53 Bargain O, Aminjonov U. Trust and compliance to public health policies in times of COVID-19. *J Public Econ* 2020; **192**: 104316.
- 54 Blair RA, Morse BS, Tsai LL. Public health and public trust: survey evidence from the Ebola virus disease epidemic in Liberia. *Soc Sci Med* 2017; **172**: 89–97.
- 55 Morse B, Grépin KA, Blair RA, Tsai L. Patterns of demand for non-Ebola health services during and after the Ebola outbreak: panel survey evidence from Monrovia, Liberia. *BMJ Glob Health* 2016; **1**: e000007.
- 56 Gächter S, Herrmann B, Thöni C. Trust, voluntary cooperation, and socio-economic background: survey and experimental evidence. *J Econ Behav Organ* 2004; **55**: 505–31.
- 57 Parks CD, Henager RF, Scamahorn SD. Trust and reactions to messages of intent in social dilemmas. *J Conflict Resolut* 1996; **40**: 134–51.
- 58 Anderson CJ, Tverdova YV. Corruption, Political allegiances, and attitudes toward government in contemporary democracies. *Am J Pol Sci* 2003; **47**: 91–109.
- 59 Farzanegan MR. The effect of public corruption on COVID-19 fatality rate: a cross-country examination. *SSRN* 2021; published online March 16. <https://doi.org/10.2139/ssrn.3805464> (preprint).
- 60 Olsen AL, Hjorth F. Willingness to distance in the COVID-19 pandemic. Open Science Framework. 2020. <https://osf.io/xpwwg2/> (accessed Sept 31, 2021).
- 61 Han Q, Zheng B, Cristea M, et al. Trust in government and its associations with health behaviour and prosocial behaviour during the COVID-19 pandemic. *PsyArXiv* 2021; published online March 26. <https://doi.org/10.31234/osf.io/p5gns> (preprint).
- 62 Fukuyama F. The Pandemic and Political Order. *Foreign Aff* 2020; **99**: 26.
- 63 Devine D, Gaskell J, Jennings W, Stoker G. Trust and the coronavirus pandemic: what are the consequences of and for trust? an early review of the literature. *Polit Stud Rev* 2021; **19**: 274–85.
- 64 Vinck P, Pham PN, Bindu KK, Bedford J, Nilles EJ. Institutional trust and misinformation in the response to the 2018-19 Ebola outbreak in North Kivu, DR Congo: a population-based survey. *Lancet Infect Dis* 2019; **19**: 529–36.
- 65 Khosravi M. Perceived risk of COVID-19 pandemic: the role of public worry and trust. *Electron J Gen Med* 2020; **17**: em203.
- 66 Larson HJ, Heymann DL. Public health response to influenza A(H1N1) as an opportunity to build public trust. *JAMA* 2010; **303**: 271–72.
- 67 Bollyky TJ, Crosby SW, Kiernan S. Fighting a pandemic requires trust. *Foreign Aff* 2021.
- 68 Szreter S, Woolcock M. Health by association? Social capital, social theory, and the political economy of public health. *Int J Epidemiol* 2004; **33**: 650–67.
- 69 Putnam R. Bowling Alone: America's Declining Social Capital. *J Democracy* 1995; **6**: 65–78.
- 70 Coleman J. Social capital in the creation of human capital. *American J Soc* 1988; **S95**–S120.
- 71 Bourdieu P. The forms of capital. In: Handbook of theory and research for the sociology of education. Westport, CT: Greenwood, 1986: 241–258.
- 72 Abascal M, Baldassarri D. Love thy neighbor? Ethnoracial diversity and trust reexamined. *Am J Sociol* 2015; **121**: 722–82.
- 73 Aldrich D, Meyer M. Social capital and community resilience. *Am Behav Sci* 2015; **59**: 254–69.