

CORRIGENDUM

DOI: 10.3892/ijmm.2022.5091

SCF increases cardiac stem cell migration through PI3K/AKT and MMP-2/-9 signaling

JUNLI GUO, WEI JIE, ZHIHUA SHEN, MENGSEN LI, YOULING LAN, YUEQIONG KONG, SHAOLI GUO, TIANFA LI and SHAOJIANG ZHENG

Int J Mol Med 34: 112-118, 2014; DOI: 10.3892/ijmm.2014.1773

Following the publication of this article, the authors have realized that they mistakenly used the total AKT blot featured in Fig. 4A for the GAPDH blot in Fig. 3B on p. 116.

The corrected version of Fig. 3, featured the correct data for the GAPDH experiment, is shown opposite. The authors regret that this error was not picked up upon before the paper was sent to press, and thank the Editor of *International Journal of Molecular Medicine* for allowing them the opportunity to publish a corrigendum. The error did not affect either the results or the conclusions reported in the study, and all the authors agree to this corrigendum. Furthermore, they regret any inconvenience caused to the readership.



This work is licensed under a Creative Commons Attribution 4.0 International (CC BY 4.0) License.

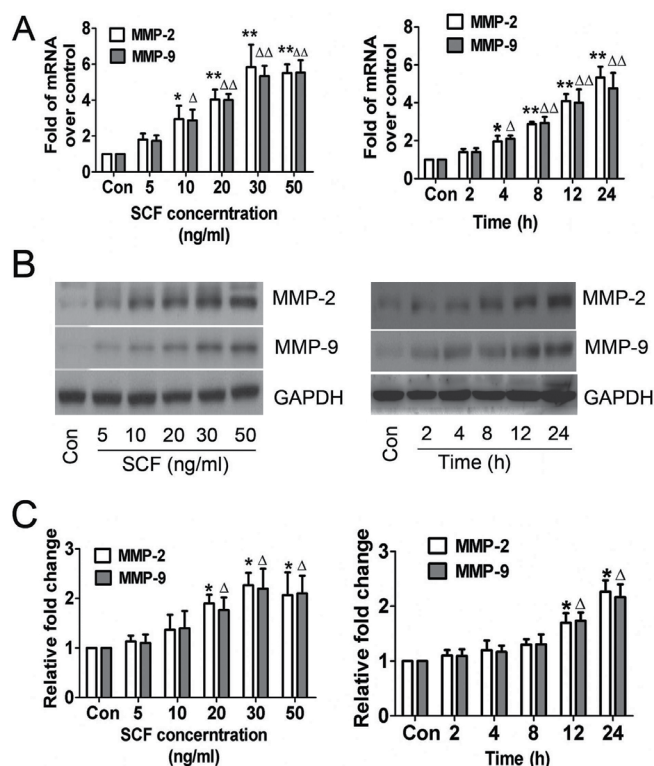


Figure 3. Effect of stem cell factor (SCF) on the expression and activity of matrix metalloproteinase (MMP)-2 and MMP-9. (A) SCF-induced MMP-2 and MMP-9 mRNA expression was measured by quantitative RT-PCR. (B) Western blot analysis of SCF-induced MMP-2 and MMP-9 protein levels. (C) Densitometric analysis of SCF-induced MMP-2 and MMP-9 enzymatic activity. Results are presented as means \pm SD. * $P < 0.05$, ** $P < 0.01$, $\Delta P < 0.05$ and $\Delta\Delta P < 0.01$ versus control.