

Erratum

Zusheng Yu*, Guowei Li, Hang Yu, Tetsuya Asakawa*

Erratum to “Changes of immune cells in patients with hepatocellular carcinoma treated by radiofrequency ablation and hepatectomy, a pilot study”

<https://doi.org/10.1515/biol-2022-0007>

received January 24, 2022; accepted January 25, 2022

In the published article Yu Z, Li G, Yu H, Asakawa T. Changes of immune cells in patients with hepatocellular carcinoma treated by radiofrequency ablation and hepatectomy, a pilot study. *Open Life Sci.* 2021;16(1):1002–9. 10.1515/biol-2021-0105, Figure 2h has been mistakenly inserted as a duplicate of Figure 2b. Upon realization,

the authors requested an erratum to correct the mistake. The authors admit to the error and claim that this is an unintentional mistake that has nothing to do with academic misconduct and does not influence the conclusion of the publication. The raw data of the experiment have been shared with Journal Editors and are available from authors upon reasonable request.

Figure 2 should be presented as follows:

* **Corresponding author: Zusheng Yu**, Department of Hepatobiliary Surgery, The First People’s Hospital of Fuyang Hangzhou, Hangzhou, 311400, China; Department of Gastrointestinal Surgery, The First Affiliated Hospital, School of Medicine, Zhejiang University, Hangzhou, 310003, China, tel: +86-571-6315-7112, fax: +86-571-6334-9039, e-mail: fyyuzs@163.com

* **Corresponding author: Tetsuya Asakawa**, Department of Neurology, The Eighth Affiliated Hospital, Sun Yat-Sen University, Shennanzhong Road 3025, Shenzhen, Guangdong-Province, 518033, China; Department of Neurosurgery, Hamamatsu University School of Medicine, Handayama, Hamamatsu-city, Shizuoka, 4313192, Japan; Research Base of Traditional Chinese Medicine Syndrome, Fujian University of Traditional Chinese Medicine, Fuzhou 350122, China, tel: +86-755-8398-2275, fax: +86-755-8398-0805, e-mail: asakawat1971@gmail.com

Guowei Li: Department of Gastrointestinal Surgery, The First Affiliated Hospital, School of Medicine, Zhejiang University, Hangzhou, 310003, China

Hang Yu: Department of Gastrointestinal Surgery, The First Affiliated Hospital, School of Medicine, Zhejiang University, Hangzhou, 310003, China

ORCID: Tetsuya Asakawa 0000-0002-2300-3509

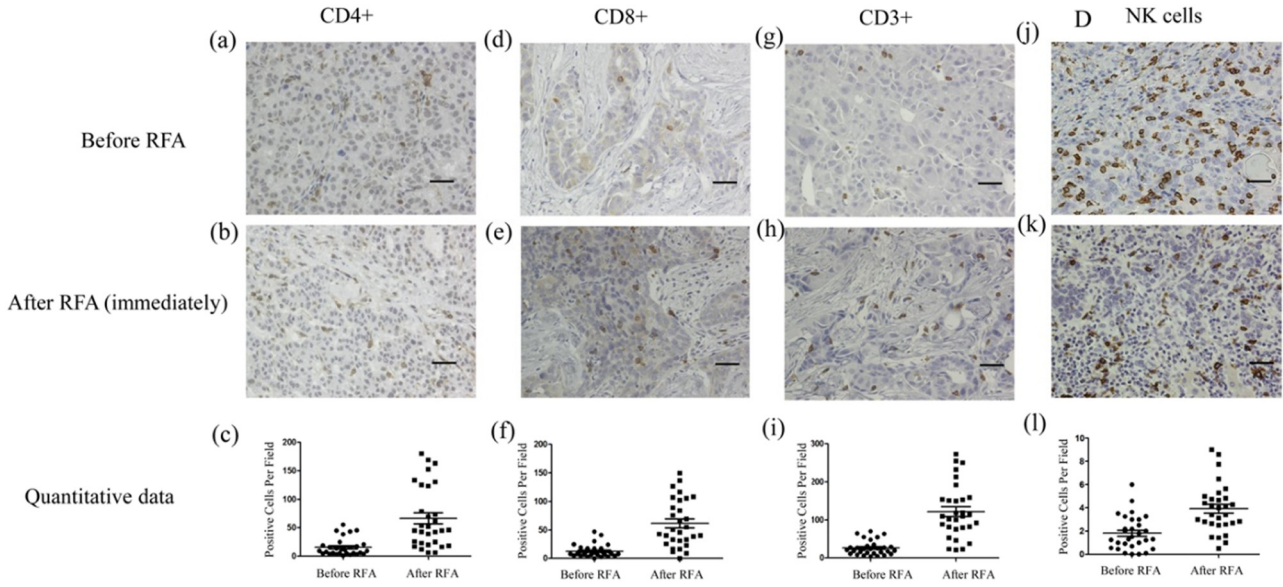


Figure 2: Immunohistochemical assay of immune cells in tumor tissues before and immediately after RFA. Before RFA: (a) CD4+ cells, (d) CD8+ cells, (g) CD3+ cells, and (j) NK cells. Immediately after RFA: (b) CD4+ cells, (e) CD8+ cells, (h) CD3+ cells, and (k) NK cells. Quantitative data: (c) CD4+ cells, (f) CD8+ cells, (i) CD3+ cells, and (l) NK cells. Data are presented as mean \pm SEM. The brown cells are positive cells. Bar = 100 μ m. RFA: radiofrequency ablation, CD: cluster of differentiation, NK: natural killer, SEM: standard error of the mean.

The authors apologize to the Journal, readers, and their colleagues for the mistake and any inconvenience it caused.