

Molecular mechanisms for the modulation of blood pressure and potassium homeostasis by the distal convoluted tubule

María Castañeda-Bueno¹, David H Ellison^{2,3,4} & Gerardo Gamba^{1,5,*} 

Abstract

Epidemiological and clinical observations have shown that potassium ingestion is inversely correlated with arterial hypertension prevalence and cardiovascular mortality. The higher the dietary potassium, the lower the blood pressure and mortality. This phenomenon is explained, at least in part, by the interaction between salt reabsorption in the distal convoluted tubule (DCT) and potassium secretion in the connecting tubule/collecting duct of the mammalian nephron: In order to achieve adequate K⁺ secretion levels under certain conditions, salt reabsorption in the DCT must be reduced. Because salt handling by the kidney constitutes the basis for the long-term regulation of blood pressure, losing salt prevents hypertension. Here, we discuss how the study of inherited diseases in which salt reabsorption in the DCT is affected has revealed the molecular players, including membrane transporters and channels, kinases, and ubiquitin ligases that form the potassium sensing mechanism of the DCT and the processes through which the consequent adjustments in salt reabsorption are achieved.

Keywords epithelial transport; familial hyperkalemic hypertension; gitelman syndrome; potassium; SESAME/EAST syndrome

Subject Categories Cardiovascular System; Urogenital System

DOI 10.15252/emmm.202114273 | Received 14 September 2021 | Revised 17 November 2021 | Accepted 1 December 2021 | Published online 20 December 2021

EMBO Mol Med (2022) 14: e14273

See the Glossary for abbreviations used in this article.

Introduction

Arterial pressure is modulated in seconds to hours by primary signaling systems such as neurotransmitters and vasoactive hormones that keep it within narrow limits. However, the long-term

regulation of blood pressure is primarily achieved by a renal mechanism that Arthur C. Guyton denominated pressure natriuresis (Fig 1A).

Communication between intrarenal blood vessels and tubules modulates salt and water reabsorption, and thus the intravascular filling pressure. If blood pressure is increased by any mechanism, pressure natriuresis will increase salt excretion in the urine, extracellular fluid volume will be decreased, and consequently blood pressure will be reduced. In chronic hypertension, salt reabsorption by the kidneys is pathologically increased, which results in volume expansion, and increased blood pressure. High blood pressure promotes natriuresis that results in restoration of salt balance at the expense of hypertension. In other words, arterial hypertension is the pathophysiological response to very slight but continuous chronic salt retention (Fig 1). This is a very slow mechanism. Even in patients with an inherited monogenic cause of hypertension, the increase in blood pressure takes years to develop.

Several observations support the concept that the kidneys are in charge of the long-term regulation of blood pressure. In animal models, attempts to increase blood pressure by any means are unsuccessful if pressure natriuresis is allowed to perform properly (Guyton, 1991). Renal transplantation between genetically normotensive or hypertensive rodents has shown that hypertension follows the kidney (Ivy & Bailey, 2014). Renal transplantation in primary hypertensive patients who developed end stage renal disease due to hypertensive nephropathy cured not only the renal failure but also the hypertension (Curtis *et al*, 1983). Finally, nearly all inherited monogenic diseases featuring chronic changes in blood pressure are due to mutations in genes that encode for renal salt transport proteins or their regulators.

In the past few years, major advances have been made in the understanding of a complex regulatory system that operates in the distal convoluted tubule of the nephron to modulate salt and potassium homeostasis and thus arterial blood pressure. These advances will be discussed here.

1 Department of Nephrology and Mineral Metabolism, Instituto Nacional de Ciencias Médicas y Nutrición Salvador Zubirán, Tlalpan, Mexico City, Mexico

2 Division of Nephrology and Hypertension, Department of Medicine, Oregon Health and Science University, Portland, OR, USA

3 Oregon Clinical & Translational Research Institute, Oregon Health & Science University, Portland, OR, USA

4 VA Portland Health Care System, Portland, OR, USA

5 Molecular Physiology Unit, Instituto de Investigaciones Biomédicas, Universidad Nacional Autónoma de México, Tlalpan, Mexico City, Mexico

*Corresponding author. Tel: +52 5555133868; E-mail: gamba@iibiomedicas.unam.mx

Glossary

| | | | |
|---------------------|--|-----------------------------|--|
| Hyperkalemia | Levels of plasma [K ⁺] that are above the normal physiological range | Nephron | Functional unit of the kidney that is composed of a glomerulus, a bunch of capillaries surrounded by a capsule of epithelial cells to which the plasma is filtered, and a tubule, formed by a monolayer of epithelial cells that modify the filtered plasma to produce urine through the processes of reabsorption and secretion |
| Macula densa | A group of specialized epithelial cells that share morphological and functional features with the cells of the thick ascending limb of Henle's loop (TAL). These cells are localized in the transition between the TAL and the DCT, right where the tubule contacts the glomerulus after having descended to and ascended from the renal medulla. They are equipped with the molecular machinery that allows them to sense the delivery of NaCl to this nephron segment and respond accordingly to modulate the glomerular filtration rate | Pressure natriuresis | Mechanism involved in the long-term regulation of blood pressure. Any shifts in blood pressure sensed by the kidneys result in an adjustment of water and salt urinary output that normalizes blood pressure |
| Natriuresis | The excretion of Na ⁺ in the urine | | |

Renal salt and potassium transport in the distal nephron

The nephron is divided into proximal and distal by the macula densa (Fig 1B). Any change in salt reabsorption in the proximal nephron is compensated by the tubuloglomerular feedback, a mechanism that regulates glomerular filtration in response to the amount of NaCl delivered to the macula densa. In contrast, distal nephron function is not subjected to this regulation, and thus, changes in salt reabsorption occurring here are reflected in the final urine. Thus, the NaCl cotransporter (NCC), located in the distal convoluted tubule (DCT), just after the macula densa, is well suited to control urinary Na excretion and hence blood pressure.

NCC is present in the apical membrane of the DCT. This is the target of thiazide-type diuretics that are among the primary drugs prescribed for the treatment of hypertension. The subsequent segments to the DCT are the connecting tubule (CNT) and the collecting ducts (CD). Each CD receive fluid from five to ten CNTs. The apical membranes of CNTs and CDs express the Na⁺ and K⁺ channels ENaC (Epithelial Na⁺ channel) and ROMK (Renal Outer Medullary K⁺ channel), respectively (Fig 1B). These are the segments where regulation of urinary K⁺ excretion takes place. Na⁺ reabsorption by ENaC is electrogenic, producing a voltage negative lumen in the CNT/CD that is the driving force for K⁺ secretion through ROMK and the BK channels. K⁺ secretion is modulated by multiple signals that include the amount of Na⁺ and fluid delivered to the CNT/CD. Thus, changes in NCC function in the previous segment can influence the rate of K⁺ secretion in the CNT/CD by affecting Na⁺ and fluid delivery (Fig 1B) (Yang *et al*, 2021). DCT is divided in two segments: DCT1 that exclusively express NCC in the apical membrane and DCT2 that is a transition segment between the DCT1 and the CNT/CD. DCT2 apical membrane contains NCC, ENaC, and ROMK.

It is known that dietary K⁺ modulates blood pressure. The higher the K⁺ ingestion, the lower the blood pressure and vice versa (Mente *et al*, 2014) (Sacks *et al*, 2001; Ma *et al*, 2021). This has been observed in open population and in several potassium supplementation trials. However, a recent meta-analysis of 32 trials, in which potassium supplementation was tested in hypertensive patients (Filippini *et al*, 2020), revealed that the blood pressure lowering

effect is lost when the amount of supplemented potassium is above 100 mmol/day. Surprisingly, with these supplementation levels, blood pressure actually increases, suggesting that in patients with hypertension, high levels of K⁺ ingestion may exert other effects on the cardiovascular system.

Plasma K⁺ must always be maintained within a very narrow range (3.5–5.5 mEq/l), whereas the body can easily adjust to mild changes in volume status. Thus, K⁺ balance is prioritized over salt balance and high K⁺ ingestion reduces salt reabsorption in the DCT, to increase Na⁺ delivery to the CNT/CD, promoting K⁺ secretion, at the expense of reducing blood pressure. The contrary occurs with low K⁺ ingestion.

The study of inherited diseases revealed a molecular mechanism explaining the inverse relationship between K⁺ intake and blood pressure levels

Inactivating mutations in the *SLC12A3* gene that encodes NCC cause Gitelman's disease that features salt wasting with low blood pressure and hypokalemic, metabolic alkalosis (Simon *et al*, 1996). Additionally, inactivating mutations in the *KCNJ10* gene that encodes the Kir4.1 K⁺ channel, present in the basolateral membrane of the DCT, causes a complex neurological disease that also features a Gitelman-like phenotype (Scholl *et al*, 2009) (Bockenbauer *et al*, 2009). In contrast, mutations in four genes produce a disease with a mirror phenotype: inherited salt-sensitive hypertension with hyperkalemia and metabolic acidosis, known as Familial Hyperkalemic Hypertension (FHHT) or pseudohypoaldosteronism type II, that is mainly due to NCC overactivation (Murillo-de-Ozores *et al*, 2020). Two of these genes encode for the With No lysine (K) kinases WNK1 and WNK4 (Wilson *et al*, 2001) and the other two encode for proteins known as Kelch like 3 (KLHL3) and Cullin 3 (CUL3) that are part of a RING-type ubiquitin ligase complex (Boyden *et al*, 2012; Louis-Dit-Picard *et al*, 2012). These human diseases hinted that the link between blood pressure and potassium regulation resides, at least in part in the DCT, because reduced activity of DCT results in hypotension and hypokalemia, whereas increased activity of DCT causes hypertension and hyperkalemia.

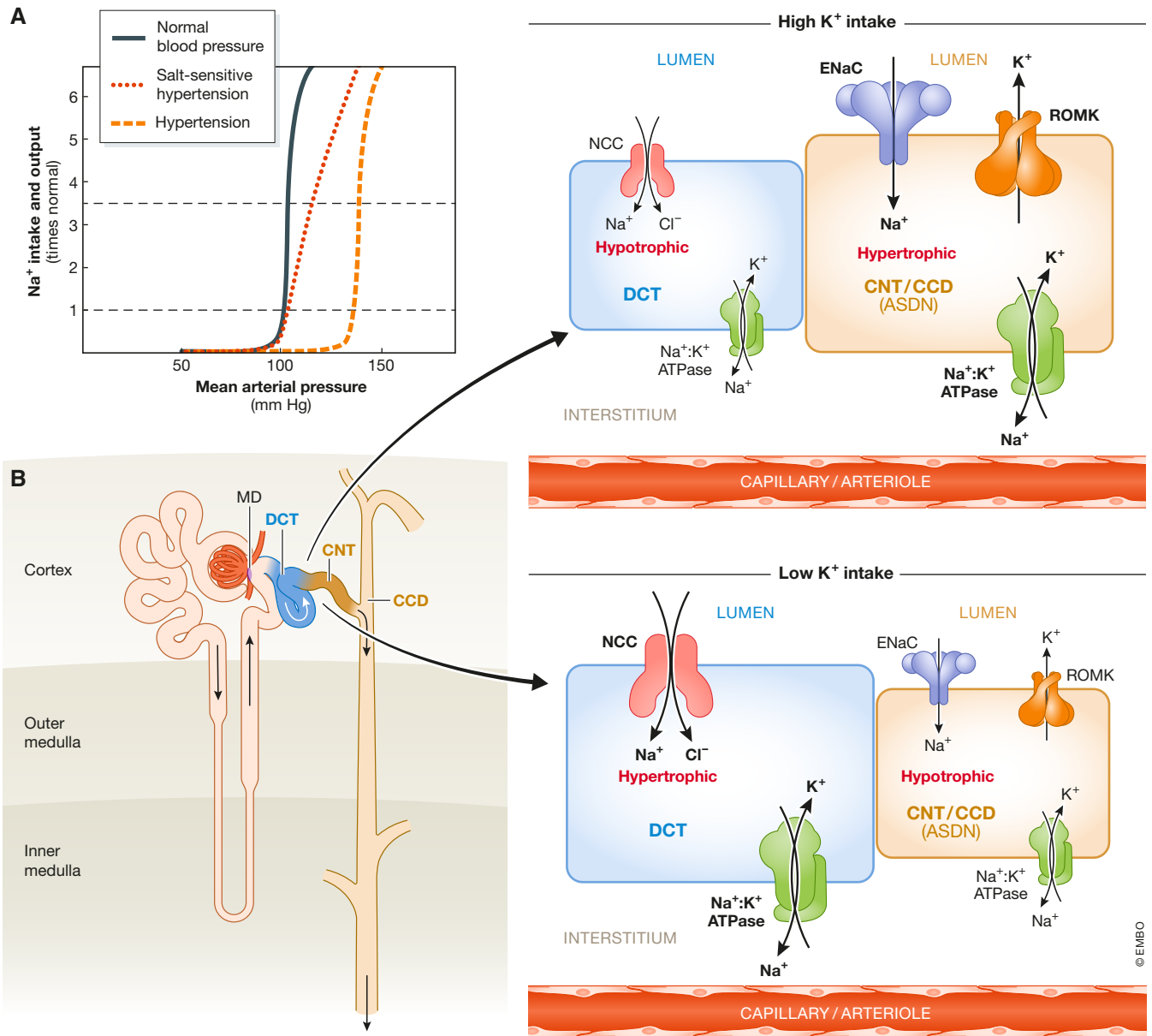


Figure 1. The renal pressure natriuresis mechanism has a central role in long-term blood pressure regulation.

(A) Any shifts in blood pressure sensed by the kidneys result in an adjustment of water and salt urinary output that normalizes blood pressure (black line). In hypertensive patients, the kidneys reabsorb more salt at a given blood pressure value, and thus, salt balance is achieved by increasing blood pressure (orange line). In salt-sensitive hypertension, the slope of the curve is modified, and thus, changes in salt intake have a notable impact on blood pressure levels (red line). This is observed, for example, when one mechanism for regulation of renal salt excretion is lost, as in primary aldosteronism (Adapted from Guyton AC, Coleman TG, Young DB, *et al*: Salt balance and long-term blood pressure control. *Annu Rev Med* 31:15, 1980). (B) Right after the macula densa (MD), the first portion of the distal nephron (depicted in the inset) is where the fine tuning of salt and K⁺ urinary excretion takes place. It is composed by three functionally distinct segments: the distal convoluted tubule (DCT), followed by the connecting tubule (CNT), and the cortical collecting duct (CCD). Here, apical Na⁺ uptake is driven by the Na⁺ gradient generated by the basolateral Na⁺/K⁺ ATPase (in green). In the DCT, NCC (in red) is the major apical Na⁺ entry pathway. In the CNT and CCD, Na⁺ crosses the apical membrane via the Na⁺ channel ENaC (blue). ENaC activity generates a lumen-negative electrical gradient that drives K⁺ efflux through apical ROMK channels (yellow). Thus, ROMK-mediated K⁺ secretion is dependent on ENaC activity. This K⁺ secretory system is modulated by aldosterone; hence, these segments (CNT and CCD) constitute the aldosterone sensitive distal nephron (ASDN). In addition, in intercalated cells present within the CNT and CCD segments (not depicted here) flow-activated BK channels can mediate K⁺ secretion under high luminal flow conditions. Although no net K⁺ reabsorption or secretion occurs in the DCT, NCC activity can modulate K⁺ secretion in the ASDN by modulating Na⁺ delivery. Thus, NCC activity is modulated in response to changes in dietary K⁺ intake that indirectly affect K⁺ secretion. Moreover, changes in NCC activity promote the remodeling of distal nephron segments. For instance, high NCC activity is associated with DCT hypertrophy and CNT/CCD hypotrophy (Grimm *et al*, 2017), whereas low NCC activity is associated with DCT hypotrophy (Loffing *et al*, 1996; Schnoz *et al*, 2020). Created with Biorender.com.

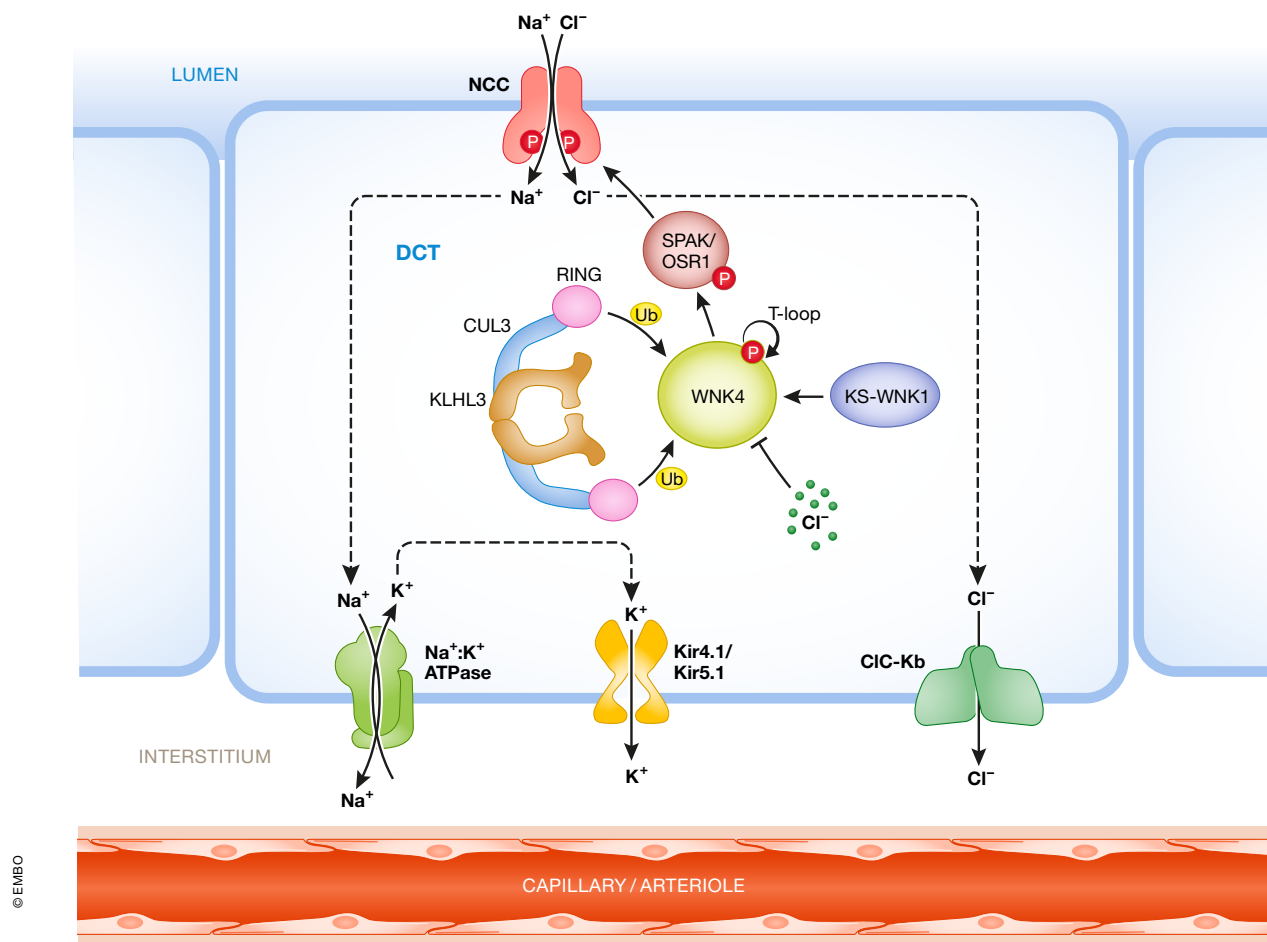


Figure 2. Key molecular players in DCT cells.

NaCl reabsorption in the DCT occurs through the concerted action of NCC in the apical membrane and the Na^+/K^+ ATPase, the ClC-Kb channels, and the Kir4.1/5.1 K^+ channels in the basolateral side. NCC phosphorylation is modulated by the WNK4-SPAK/OSR1 pathway, which is modulated by intracellular chloride concentration and the activity of the CUL3-KLHL3 ubiquitin ligase complex. The kidney-specific, catalytically inactive, short isoform of WNK1 (KS-WNK1) can bind WNK4 and promote its activation under certain conditions. Created with Biorender.com.

The proteins whose altered function cause the FHt and SeSAME/EAST syndromes regulate the activity of NCC

NCC is a twelve transmembrane spanning protein that belongs to the electroneutral cation-coupled chloride cotransporters family (SLC12) (Gamba, 2005). In the kidney, it is exclusively present in the apical membrane of DCT cells, where it participates in salt reabsorption (Fig 2). Its activity is modulated by phosphorylation of key residues in the amino terminal domain. When threonine residues 55 and 60, and serine 73 of hNCC (Thr 53, 58, and 71 in mouse and rat NCC) are phosphorylated, the activity of the cotransporter is increased (Pacheco-Alvarez *et al*, 2006; Richardson *et al*, 2008). Threonine 60 is the master site for its regulation. The use of phosphoantibodies recognizing these sites has been of remarkable help for the study of NCC activity in a diversity of mouse models (Hadchouel *et al*, 2016; Ostrosky-Frid *et al*, 2019).

The kinases responsible for NCC phosphorylation are the STE20-Proline Alanine rich Kinase (SPAK) and the Oxidative Stress Responsive kinase 1 (OSR1) (Piechotta *et al*, 2002; Dowd & Forbush,

2003; Vitari *et al*, 2005; Richardson *et al*, 2008) (Fig 2). NCC possesses a SPAK binding site near the phosphorylation sites that allows interaction with, and phosphorylation by, these kinases. In the absence of phosphorylation, the activity of NCC is completely absent (Pacheco-Alvarez *et al*, 2006; Yang *et al*, 2013).

SPAK and OSR1 are targets of the WNK kinases. To be active and promote the NCC phosphorylation, SPAK/OSR1 must be phosphorylated in key residues by the WNK kinases (Fig 2) (Vitari *et al*, 2005, 2006). The most important sites for activation are threonine residues 243 and 185 in mSPAK and mOSR1, respectively. Elimination of these sites *in vitro* renders them catalytically inactive (Vitari *et al*, 2005). Elimination of SPAK's T243 in mice produces a Gitelman-like syndrome due to the reduction of NCC activity (Rafiqi *et al*, 2010). Serine 383 in mSPAK and serine 325 in mOSR1 are also phosphorylated by WNKs. Although the role of these sites for kinase activation is more controversial (Vitari *et al*, 2005; Gagnon & Delpire, 2010), their phosphorylation has been extensively used to assess the kinases' activation state using phosphoantibodies. In mouse, constitutive activation of SPAK, exclusively in the DCT1, recapitulates the

full phenotype of FHHt, strongly suggesting that activation of NCC alone is enough to produce the disease phenotype (Grimm *et al*, 2017).

There are four WNK kinases genes in mammals known as WNK1 to WNK4 (Verissimo & Jordan, 2001). WNK2 is almost exclusively expressed in the central nervous system and has been identified as a tumor suppressor gene (Rinehart *et al*, 2011). WNK3 is present in many cells and tissues and has been shown to be involved in cell volume regulation due to its effects on SLC12 transporters (Cruz-Rangel *et al*, 2012; Pacheco-Alvarez *et al*, 2020). Mutations in WNK3 result in a very complex neurological disease known as Anderman's syndrome (Howard *et al*, 2002). WNK1 and WNK4 are also expressed in many cells, but when mutated they produce FHHt whose phenotype is exclusively the consequence of DCT malfunction. Another disease due to mutations in a WNK1 exon that is exclusively expressed in neurons is the Hereditary Sensory Neuropathy type II (Shekarabi *et al*, 2008).

The With No lysine (K) kinases (WNKs) owe their name to the atypical positioning of the catalytic lysine in subdomain I instead of in subdomain II of the kinase domain where it is found in all other serine/threonine kinases (Xu *et al*, 2000). In the kidney, the WNK1 gene gives rise to two isoforms due to the presence of an alternative promoter located in intron 4 (Delaloy *et al*, 2003; O'Reilly *et al*, 2003). The long WNK1 (L-WNK1), whose transcription starts in exon 1, contains the kinase domain and is expressed at low levels in the kidney. The short WNK1, known as KS-WNK1 due to its kidney-specific expression, contains a unique N-terminal segment that is 30 residues long and is encoded in exon 4a, followed by the rest of the protein starting at the polypeptide sequence encoded by exon 5. KS-WNK1 thus contains no kinase domain. This isoform's transcript is highly expressed in the DCT and is almost exclusively present in this part of the nephron (Vidal-Petiot *et al*, 2012). The role of KS-WNK1 in DCT physiology is still debated as reviewed below. Large intronic deletions (20 to 40 kilobases long) occurring within the first intron of WNK1 produce FHHt, most likely as a consequence of the ectopic expression of L-WNK1 in the DCT.

The WNK4 kinase is highly expressed in the DCT where it is the main regulatory kinase of the SPAK-NCC pathway (Castañeda-Bueno *et al*, 2012; Murillo-de-Ozores *et al*, 2021). All WNKs contain a highly conserved acidic region located in the first portion of the C-terminal regulatory domain (EPEE**PEADQH** in WNK4, bold letters mark the positions in which point mutations have been identified in FHHt kindreds). Missense mutations within this motif in WNK4 result in FHHt (Wilson *et al*, 2001). The dominant pattern of inheritance of the disease caused by these mutations suggested that they result in a gain of function. As shown in Fig 2, it is now accepted that WNK4 activates the SPAK-NCC pathway. However, the field was confused for years because initial evidence from *in vitro* and *in vivo* models suggested that WNK4 could inhibit (Wilson *et al*, 2003; Yang *et al*, 2003; Cai *et al*, 2006; Lalioti *et al*, 2006; Mu *et al*, 2011) or activate (Na *et al*, 2012; Wakabayashi *et al*, 2013) NCC. The first clear evidence that WNK4 activates NCC was the observation that elimination of WNK4 in mice resulted in a remarkable decrease in NCC expression and phosphorylation and the consequent Gitelman-like phenotype (Castañeda-Bueno *et al*, 2012). Later, it was shown that the confusion was due to the fact that WNK4 activity is sensitive to intracellular chloride concentration ($[Cl^-]_i$). First, Píala *et al* (2014), through the structural analysis of WNK1's kinase domain,

identified a chloride binding site within the active site of WNK1 that, when occupied, prevents the autophosphorylation and thus activity of the kinase. Then, Bazua-Valenti *et al* (2015) demonstrated that the same chloride binding site is present in WNK4 that, when eliminated by the L322F substitution (in hWNK4), renders WNK4 constitutively active, so that it can no longer be inhibited by Cl^- . In this regard, it was previously shown that NCC activity is modulated by $[Cl^-]_i$ through phosphorylation of the cotransporter (Pacheco-Alvarez *et al*, 2006). Therefore, as shown in Fig 2, the activity of WNK4 in the DCT is modulated by $[Cl^-]_i$. If $[Cl^-]_i$ declines, WNK4 is autophosphorylated acquiring the capacity to activate SPAK and OSR1 that in turn activate NCC. In contrast, increased $[Cl^-]_i$ prevents WNK4 activity and, thus, SPAK/OSR1 and NCC activation.

WNK4 is perfectly suited for its regulatory role of NCC activity in the DCT given that it is the WNK kinase with the highest sensitivity to inhibition by Cl^- (Terker *et al*, 2016b; Pacheco-Alvarez *et al*, 2020) and the assessment of $[Cl^-]_i$ in DCT cells by different groups has shown that it is lower than in most mammalian cells (Boettger *et al*, 2002; Weinstein, 2005; Su *et al*, 2020). Because of their lower sensitivity to Cl^- , if L-WNK1 and WNK3 were expressed in the DCT, they would not be expected to be inhibited by the low Cl^- environment of these cells and, thus, would keep NCC constantly active. Therefore, it makes sense that these kinases are not expressed in the DCT under physiological conditions (Lee *et al*, 2015; Chen *et al*, 2021b). Instead, disease-causing deletions occurring within intron one of *WNK1* promote the ectopic expression of L-WNK1 (like in $WNK1^{+/FHHt}$ mice) in the DCT and produce FHHt (Vidal-Petiot *et al*, 2013; Chavez-Canales *et al*, 2014). In addition, elimination of WNK4 in mice that also contain the KLHL3-R528H mutation, which alone causes a severe FHHt phenotype, results in almost complete absence of NCC activity with a Gitelman-like phenotype (Susa *et al*, 2017). This contrasts with the observation that in $WNK1^{+/FHHt}$ mice that present the ectopic presence of L-WNK1 in the DCT, additionally knocking out WNK4 does not correct the FHHt phenotype, suggesting that DCT L-WNK1 expression in these mice can compensate for the absence of WNK4 (Chavez-Canales *et al*, 2014).

When mutations in *WNK1* and *WNK4* were found to cause FHHt (Wilson *et al*, 2001), it was noticed that most affected families had no mutations in these genes, but the genome linkage analysis had no power to detect other involved genes. Ten years later, when whole exome sequencing became possible, FHHt-causative mutations in the *CUL3* and *KLHL3* genes were identified. *CUL3* and *KLHL3* are part of a RING-type ubiquitin ligase complex (Boyden *et al*, 2012; Louis-Dit-Picard *et al*, 2012). *KLHL3* mutations can be dominant or recessive, whereas *CUL3* mutations are dominant and mostly *de novo* (Ostrosky-Frid *et al*, 2020). Analysis of the age at which hypertension develops, the percentage of family members with the mutation that also present hypertension, and the levels of serum K^+ , HCO_3^- , and pH (see Table 1), showed that the severity of the phenotype is related to the mutated gene with the following profile (from more to less severe): *CUL3* > *KLHL3* dominant > *KLHL3* recessive > *WNK4* > *WNK1*. It was proposed that *CUL3* and *KLHL3* must lie upstream of WNK kinases and this was quickly demonstrated when it was shown that the *CUL3*-*KLHL3* ubiquitin ligase complex binds and ubiquitylates WNKs, marking them for proteasomal degradation (Ohta *et al*, 2013; Shibata *et al*, 2013; Wakabayashi *et al*, 2013). *CUL3* forms a dimer that in turn binds to

Table 1. Genetic diseases with altered DCT function.

| Disease | Affected gene | Affected protein | Mutation | Mendelian inheritance | Proposed mechanism | |
|------------------------|----------------|--|--|---|--|---|
| Gitelman syndrome | <i>SLC12A3</i> | NCC | Loss-of-function missense, nonsense, or frameshift-introducing mutations in > 100 different positions along the protein, small deletions, mutations at donor and acceptor splice sites, etc. | Autosomal recessive | Impaired NCC activity due to impaired protein synthesis, increased cotransporter degradation, impaired trafficking to plasma membrane, impaired cotransporter function, etc. | Acuna <i>et al</i> (2011), Gamba (2005), Sabath <i>et al</i> (2004) |
| FHHt | <i>WNK1</i> | WNK1 | Deletions in intron 1 | Autosomal dominant | Ectopic L-WNK1 expression in the DCT | Vidal-Petiot <i>et al</i> (2013), Wilson <i>et al</i> (2001) |
| | | WNK1 | Missense mutations in the acidic domain | Autosomal dominant | Decreased KS-WNK1 degradation in the DCT | Louis-Dit-Picard <i>et al</i> (2020) |
| | <i>WNK4</i> | WNK4 | Missense mutations in the acidic domain | Autosomal dominant | Decreased WNK4 degradation in the DCT | Brooks <i>et al</i> (2012), Golbang <i>et al</i> (2005), Gong <i>et al</i> (2008), Shibata <i>et al</i> (2013), Wakabayashi <i>et al</i> (2013), Wilson <i>et al</i> (2001) |
| | | WNK4 | Missense mutations in the C-terminal regulatory region: R1185C and K1169E | Autosomal dominant | Disruption of inhibitory domain that promotes increased WNK4 activity | Na <i>et al</i> (2012), Wilson <i>et al</i> (2001), Zhang <i>et al</i> (2011) |
| | <i>KLHL3</i> | KLHL3 | Several missense mutations clustered in the BTB domain and specific regions of the kelch propeller domain | Autosomal dominant | Decreased WNK4 and KS-WNK1 degradation in the DCT | Boyden <i>et al</i> (2012), Louis-Dit-Picard <i>et al</i> (2012), Susa <i>et al</i> (2014), Susa <i>et al</i> (2017) |
| | | KLHL3 | Several loss-of-function missense, nonsense, and splicing-altering mutations | Autosomal recessive | Decreased WNK4 and KS-WNK1 degradation in the DCT | Boyden <i>et al</i> (2012), Louis-Dit-Picard <i>et al</i> (2012), Sasaki <i>et al</i> (2017) |
| <i>CUL3</i> | CUL3 | Mutations that affect the splicing of exon 9 and result in an internal deletion of 57 amino acid residues in the protein | Autosomal dominant | Decreased WNK4 and KS-WNK1 degradation in the DCT; impaired vascular relaxation through activation of RhoA-ROCK pathway | Abdel Khalek <i>et al</i> (2019), Boyden <i>et al</i> (2012), Ferdaus <i>et al</i> (2017), Ostrosky-Frid <i>et al</i> (2020) | |
| SESAME / EAST syndrome | <i>KCNJ10</i> | Kir4.1 | Loss-of-function missense or nonsense mutations | Autosomal recessive | Impaired function of Kir4.1/Kir5.1 heterotetramers in the DCT leading to decreased basolateral K ⁺ conductance | Bockenbauer <i>et al</i> (2009), Scholl <i>et al</i> (2009), (Reichold <i>et al</i> (2010) |

a KLHL3 dimer through the BTB domain of KLHL3. KLHL3 interacts with WNK kinases through its KLHL propeller domain (Fig 2). The KLHL3 binding site in WNKs is the highly conserved acidic motif (see above). Mutations in the acidic motif of WNK4 that produce FHHt abrogate the recognition of the kinase by the CUL3-KLHL3 E3 complex.

All cases of FHHt caused by mutations in the *CUL3* gene are due to the skipping of exon 9 as a result of aberrant splicing. The resulting protein is 57 amino acid residues shorter (Ostrosky-Frid *et al*, 2020). Complexes containing CUL3-Δ9 apparently promote KLHL3 ubiquitylation (Cornelius *et al*, 2018). Thus, the Δ9 mutations are gain of function mutations that promote KLHL3

Figure 3. Signal transduction systems that mediate NCC regulation in response to extracellular stimuli.

(A) DCT cells directly sense changes in $[K^+]_e$ that modulate NCC activity through modulation of the $[Cl^-]_i$, that in turns modulates WNK4-SPAK activity. (B) Hormonal stimuli that activate G α s-coupled receptors and promote PKA activation in the DCT lead to NCC activation through different pathways activating WNK4 and inhibiting its KLHL3/CUL3 E3-mediated degradation. In addition, PKA phosphorylate I1, a PP1 regulatory protein whose expression is enriched in DCT cells. I1 phosphorylation enhances its ability to inhibit PP1 and thus may prevent PP1-mediated dephosphorylation of WNK4, SPAK/OSR1, and NCC. (C) The Ca²⁺-sensing receptor (CaSR) and the ATI angiotensin II receptor both activate G α q proteins that promote activation of PKC isoforms. In vitro, PKC can phosphorylate WNK4 and KLHL3 RRXS sites leading to increased WNK4 protein and activity levels. In vivo, volume depletion or increased Ca²⁺ delivery to the DCT, which would be expected to promote ATI and CaSR respectively, correlate with increased phosphorylation of these sites. Created with Biorender.com.

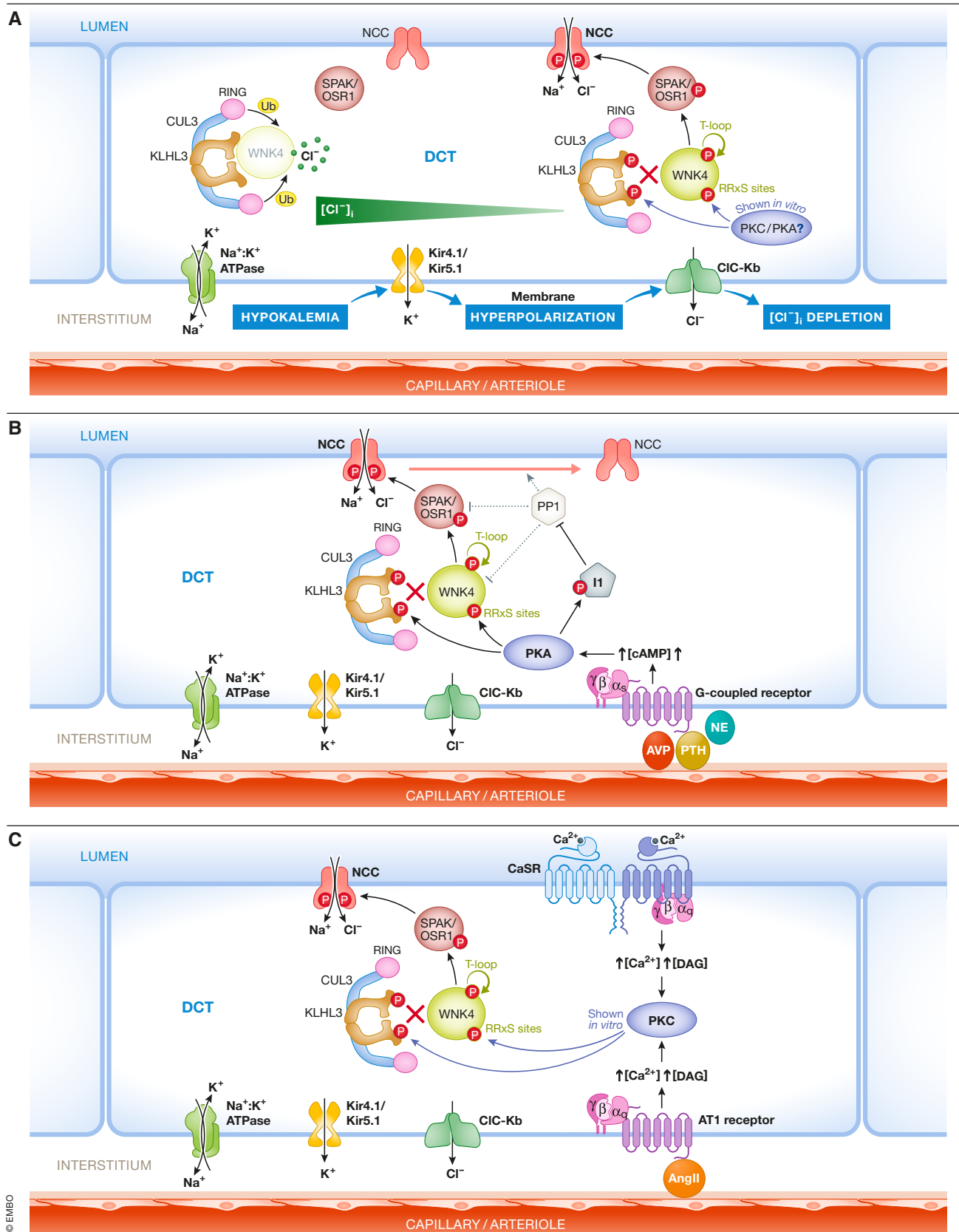


Figure 3.

degradation, attenuating WNK4 ubiquitination and increasing the half-life of this kinase. FHHt-causative mutations in KLHL3 can be dominant or recessive. Mutations affecting the BTB domain (and thus, interaction with CUL3) are dominant, and some mutations affecting the substrate binding propeller domain are dominant as well. Recessive mutations lie in the Back domain (which links the BTB and the propeller domains) and in some regions of the propeller domain (Boyden *et al*, 2012). The difference in the mechanism of disease between the dominant and recessive is not completely understood.

Role of basolateral channels in the regulation of NCC activity

The basolateral membrane of DCT cells also plays an important role in the regulation of NCC. The Kir4.1 channel is present in this membrane. When the *KCNJ10* gene that encodes this channel is mutated in humans, it produces an inherited disease known as EAST/SeSAME syndrome that features Seizures, Sensorineural deafness, Ataxia, Mental retardation, and Electrolyte disturbances (Bockenhauer *et al*, 2009; Scholl *et al*, 2009). This last component is a salt wasting phenotype with hypokalemia similar to the one observed in Gitelman syndrome. Mice null for Kir4.1 reproduce the disease (Zhang *et al*, 2014). In the DCT, Kir4.1 forms heterodimers with Kir5.1 encoded by the *KNJC16* gene. It was recently demonstrated that some individuals with *KNJC16* disrupting mutations also develop a tubulopathy with hypokalemia and sensory deafness (Schlingmann *et al*, 2021). Thus, inactivation of NCC in the apical membrane or Kir4.1/5.1 channels in the basolateral membrane of the DCT results in similar phenotypes with salt wasting and hypokalemia. It turned out that potassium movement through Kir4.1/5.1 activity modulates NCC activity. As will be detailed in the following section, this is mainly due to the effect that basolateral K⁺ movement exert on basolateral Cl⁻ fluxes. Within the basolateral membrane of DCT cells, the ClC-Kb channel is expressed. Given that this channel is also expressed in the basolateral membrane of cells of the thick ascending limb of Henle's loop (TAL), where it plays a key role for basolateral Cl⁻ extrusion, mutations in the gene encoding for ClC-Kb cause Bartter syndrome type III (Simon *et al*, 1996). Bartter syndrome is a tubulopathy caused by the malfunctioning of Na⁺ reabsorption in the TAL that leads to severe urinary salt wasting, hypokalemia, metabolic alkalosis, hypomagnesemia, and hypercalciuria. Type III Bartter patients, however, typically do not present hypercalciuria, and it is thought that this is mainly because in these patients not only Na⁺ reabsorption in the TAL is affected, but also Na⁺ reabsorption in the DCT (Matsunoshita *et al*, 2016; Hennings *et al*, 2017). Given that decreased DCT Na⁺ reabsorption is associated with increased renal Ca²⁺ reabsorption, it has been suggested that this defect counterbalances the decreased Ca²⁺ reabsorption occurring in the TAL.

Regulation of NCC activity in response to changes in extracellular [K⁺]

NCC activity (measured as phosphorylation) is modulated in response to changes in dietary K⁺ content (Vallon *et al*, 2009;

Sorensen *et al*, 2013; Castaneda-Bueno *et al*, 2014; Terker *et al*, 2015a). Low K⁺ intake promotes NCC activation, whereas high K⁺ intake promotes NCC inhibition. Extreme amounts of K⁺ content have been generally used in the rodent studies, in which these observations have been made (low K⁺ ≤ 0.1%; high K⁺ ≥ 5%), although Terker *et al* did test diets with various K⁺ contents and observed a dose-dependent effect of K⁺ ingestion on extracellular K⁺ concentration ([K⁺]_e) and an inverse linear correlation between [K⁺]_e and pNCC levels. Observations by several groups have suggested that this modulation occurs in response to changes in extracellular K⁺ concentration ([K⁺]_e) (Kim *et al*, 1998; Rengarajan *et al*, 2014; Terker *et al*, 2016a, 2016b; Wolley *et al*, 2017; Boscardin *et al*, 2018).

Regarding the molecular mechanisms involved, the currently accepted model is that, through Kir4.1/5.1 K⁺ channels, DCT cells directly sense changes in [K⁺]_e and modulate the levels of NCC activity accordingly (Fig 3A). Alterations in [K⁺]_e affect movement of K⁺ ions across DCT's basolateral membrane, leading to changes in basolateral membrane potential that ultimately affect the driving force for Cl⁻ ion movement through basolateral ClC-Kb channels. Additionally, low dietary potassium intake increases, and high dietary potassium intake decreases, the conductance of Kir4.1/5.1 channels, amplifying the effects of driving force on basolateral voltage (Wang *et al*, 2018). Thus, changes in [Cl⁻]_i occur that affect the activity of the WNK4-SPAK/OSR1 pathway through direct modulation of WNK4 activity. For instance, when [K⁺]_e decreases, net K⁺ efflux through basolateral K⁺ channels in the DCT promotes membrane hyperpolarization that drives Cl⁻ efflux. The resulting decrease in [Cl⁻]_i stimulates WNK4 activity leading to NCC activation. The opposite mechanism operates in the face of hyperkalemia.

Supporting this model and consistent with the role of Kir4.1/5.1 heterotetramers in the regulation of NCC activity, it has been shown that, conditional kidney-specific Kir4.1 knockout mice have decreased activity, expression and phosphorylation of NCC, lower DCT basolateral K⁺ conductance, depolarized basolateral membranes, and a Gitelman-like phenotype (Cuevas *et al*, 2017). These observations clearly indicate that Kir5.1 alone cannot form functional K⁺ channels in the DCT, as supported by observations made in vitro (Tucker *et al*, 1996; Tanemoto *et al*, 2005). In contrast, Kir5.1 knockout mice display higher activity, expression, and phosphorylation of NCC, higher DCT basolateral K⁺ conductance, and hyperpolarized basolateral membranes (Paulais *et al*, 2011; Wu *et al*, 2019). Thus, it appears that Kir4.1 can itself form functional homomeric potassium channels in the absence of Kir5.1. It has been proposed that decreased sensitivity to intracellular pH of Kir4.1 homotetramers (versus Kir4.1/5.1 heterotetramers) may explain the higher conductance mediated by Kir4.1 homotetramers in the DCTs of these mice.

Supporting the role of [Cl⁻]_i on NCC modulation during changes in dietary K⁺, it was observed that Cl⁻ channel activity and Cl⁻ conductance of DCT cells are increased in animals on low K⁺ diet and decreased on high K⁺ diet (Cuevas *et al*, 2017). These effects were abrogated in Kir4.1 knockout mice. In addition, Barttin hypomorphic mice (Barttin is a chaperone protein that is required for ClC-Kb channel localization in the plasma membrane) did not upregulate pNCC levels when placed on low K⁺ diet (Nomura *et al*, 2018). Finally, mice harboring mutations in the WNK4 gene that make the kinase insensitive to inhibition by Cl⁻ (WNK4-L319,321F

mice) displayed higher basal levels of NCC and pNCC, an FHHt-like phenotype, and impaired regulation of NCC in response to changes in $[K^+]_e$ (Chen *et al*, 2019).

Experimental evidence suggests that the “turning off” of the WNK4-SPAK/OSR1 kinase cascade due to increased $[Cl^-]_i$ contributes to the dephosphorylation of NCC in response to high K^+ intake and hyperkalemia (Chen *et al*, 2019; Mukherjee *et al*, 2021). Additionally, there is evidence that activation of phosphatases is also important to dephosphorylate and thus decrease NCC activity (Penton *et al*, 2016; Chen *et al*, 2019). Phosphatases that have been suggested to participate in NCC dephosphorylation include PP1 (Penton *et al*, 2019), PP3 (or calcineurin) (Hoorn *et al*, 2011; Lazelle *et al*, 2015), and PP4 (Glover *et al*, 2010). Of note, tacrolimus is a calcineurin-specific inhibitor that is widely used as an immunosuppressor in transplant recipients and for the treatment of autoimmune disease, and its use has been associated with the development of hyperkalemic hypertension that correlates with NCC activation (Hoorn *et al*, 2011; Rojas-Vega *et al*, 2015a).

In experiments performed with kidney slices incubated *ex vivo* with solutions containing different K^+ concentrations, none of the inhibitors directed against any of the mentioned phosphatases was able to prevent the dephosphorylation of NCC stimulated by high $[K^+]_e$ (Penton *et al*, 2016; Mukherjee *et al*, 2021). However, pre-treatment with tacrolimus was shown to attenuate NCC dephosphorylation in mouse kidneys in response to acute oral K^+ loading (15 min post-gavage) (Shoda *et al*, 2017). Further research will be necessary to clarify the source of these controversial observations and to understand the role of each specific phosphatase in this pathway.

In addition to the modulation of WNK4 kinase activity by Cl^- binding, another mechanism for NCC modulation in response to changes in $[K^+]_e$ involves modulation of WNK4 expression levels in the DCT. Mice placed on low K^+ diet present higher levels of KLHL3 phosphorylation at a site located within the substrate binding domain (Ishizawa *et al*, 2016) that prevents substrate binding and thus, KLHL3-targeted WNK4 degradation (Shibata *et al*, 2014). Thus, mice on low K^+ diet display higher levels of WNK4 in the kidney. The molecular mechanisms leading to this phosphorylation event remain elusive, although it has been proposed that activation of a PKC isoform may be involved (Ishizawa *et al*, 2016).

It is worth mentioning here that, once this modulation of NCC activity by $[K^+]_e$ was well established and the molecular mechanisms for this modulation began to be uncovered, previous observations that suggested that NCC is a target for modulation by the mineralocorticoid hormone aldosterone were immediately questioned. In these works, it was observed that aldosterone injection or infusion in rodents promoted an increase in NCC expression levels and phosphorylation (Kim *et al*, 1998; van der Lubbe *et al*, 2011, 2012). Aldosterone is synthesized and secreted in the zona glomerulosa of the adrenal gland in response to hypovolemia (angiotensin II) and hyperkalemia. It acts upon cells of the CNT and principal cells of the CD to promote Na^+ reabsorption and K^+ secretion. This is achieved through the stimulation of the activity of the apical Na^+ channel ENaC and of the basolateral Na^+/K^+ ATPase, whose activity indirectly promotes K^+ efflux through the apical ROMK K^+ channels (Fig 1B). Thus, one of the consequences of increased circulating aldosterone in the absence of high K^+ intake or hyperkalemia is hypokalemia, which would be expected to directly activate NCC. To

evaluate whether aldosterone can activate NCC directly or only indirectly through its effects on $[K^+]_e$, clever experimental strategies were designed by different groups. Czogalla *et al* showed that in mice in which the mineralocorticoid receptor (MR) was randomly deleted in ~20% of renal tubule cells, pNCC upregulation in response to low NaCl diet was similar in cells expressing than in cells not expressing MR, suggesting that the effect was independent of MR activity (Czogalla *et al*, 2016). In contrast, upregulation of α ENaC abundance with low Na^+ diet was readily observed in MR positive cells, but was absent in MR negative cells. In another work, Terker *et al* generated kidney-specific MR knockout mice and observed that these mice had hyperkalemia and reduced NCC phosphorylation levels (Terker *et al*, 2016a). However, pNCC levels could be reverted to those observed in wild-type littermates by administration of a low K^+ diet, suggesting that altered pNCC levels were secondary to the hyperkalemia observed in the knockouts.

In summary, NCC activity is tightly regulated in response to changes in $[K^+]_e$ and the mechanisms underlying this regulation are now partially understood, although research is still underway to further increase our understanding. NCC is not a direct target of aldosterone-mediated regulation, although aldosterone can affect NCC activity indirectly by affecting $[K^+]_e$. Given that NCC is an important regulator of renal Na^+ excretion, modulation of NCC activity by $[K^+]_e$ may at least partially explain the inverse correlation between K^+ consumption and blood pressure levels observed at the population level in humans and in diverse animal models. Supporting this concept, it has been shown that the increase in blood pressure produced in wild-type mice given a high Na^+ /low K^+ diet is not observed in NCC knockout mouse (Terker *et al*, 2015b). Other molecular pathways explaining the effect of K^+ consumption on blood pressure may include additional effects of K^+ on renal cotransporters (Murillo-de-Ozores *et al*, 2018) or extra-renal mechanisms involving, for example, the vasculature and central nervous system (Adrogue & Madias, 2007).

Additional mechanisms implicated in the modulation of NCC activity

In addition to $[K^+]_e$, NCC activity is modulated by multiple hormonal stimuli (Rojas-Vega & Gamba, 2016). Hormones that increase the activity of NCC include angiotensin II (angII), arginine vasopressin (AVP), insulin, norepinephrine (NE), parathyroid hormone (PTH), and female sex hormones (Pedersen *et al*, 2010; van der Lubbe *et al*, 2011; Castaneda-Bueno *et al*, 2012; Chavez-Canales *et al*, 2013; Rojas-Vega *et al*, 2015b). Hormonal binding to their respective transmembrane receptors promotes activation of signaling cascades that, in some cases, share downstream components. For example, AVP, NE, and PTH are known to act on G α s-coupled receptors to increase the cAMP levels in the cell, activating the Protein Kinase A (PKA). In kidney slices, pharmacological modulation of cAMP levels can indeed modulate NCC phosphorylation (Penton *et al*, 2019). Three different pathways have been proposed to mediate NCC activation by PKA (Fig 3B). PKA can phosphorylate KLHL3 and WNK4 in RRXS motifs in *in vitro* systems (Yoshizaki *et al*, 2015; Castaneda-Bueno *et al*, 2017). The RRXS motif in KLHL3 lies within the substrate binding domain. Phosphorylation of this site (serine 433) affects KLHL3 binding to WNK kinases, preventing

their degradation. In addition, phosphorylation of WNK4 at RRXS sites promotes the kinase's activation (Castaneda-Bueno *et al*, 2017). The third pathway involves phosphorylation by PKA of the Protein Phosphatase 1 (PP1) regulatory protein Inhibitor 1 (I-1). Phosphorylation of I-1 by PKA activate I-1 to inhibit PP1. I-1 expression is enriched in DCT cells in the kidney and I-1 knockout mice have reduced pNCC levels, as well as reduced response to PTH and NE in terms of NCC activation (Penton *et al*, 2019). PP1 modulates pNCC, pSPAK, and pWNK4 levels (Murillo-de-Ozores *et al*, 2018; Penton *et al*, 2019), and thus, modulation of PP1 activity may affect the pathway at these three levels.

Angiotensin II and extracellular Ca^{2+} ions activate the $\text{G}\alpha\text{q}$ -coupled AT1 and CaSR receptors, respectively. $\text{G}\alpha\text{q}$ activation promotes activation of Protein Kinase C (PKC). In vitro assays have shown that some PKC isoforms are also able to phosphorylate KLHL3 and WNK4 at RRXS motifs, exerting similar effects on these proteins as the ones described above for PKA (Shibata *et al*, 2014; Castaneda-Bueno *et al*, 2017; Bazua-Valenti *et al*, 2018) (Fig 3C). In in vitro and in vivo systems, these hormones have been shown to promote phosphorylation of both KLHL3 and WNK4 (Shibata *et al*, 2014; Castaneda-Bueno *et al*, 2017; Bazua-Valenti *et al*, 2018). Finally, AKT-mediated phosphorylation of KLHL3 at the RRXS motif has also been shown to occur in vitro, suggesting that this pathway could also participate in insulin-mediated NCC activation (Chavez-Canales *et al*, 2013; Yoshizaki *et al*, 2015).

The KS-WNK1 enigma

As explained above, a short isoform of WNK1 that lacks the catalytic domain is expressed exclusively in the kidney, hence its name: Kidney-Specific WNK1. Data from qPCR assays and RNA sequencing of dissected tubule segments have shown that its expression is restricted to the DCT, where mRNA levels are very high, and to the connecting tubule, where mRNA levels are lower (Vidal-Petiot *et al*, 2012; Chen *et al*, 2021a).

Despite the lack of a kinase domain, in *X. laevis* oocytes KS-WNK1 expression promotes NCC activation. This effect depends on KS-WNK1 interaction with a full-length WNK kinase (in this case, the endogenous WNK expressed by the oocytes) because it is prevented by addition of the highly specific WNK inhibitor WNK463 or if the C-terminal coiled-coil domain involved in heterodimerization is mutated to prevent WNK-WNK binding (Argaiz *et al*, 2018). In addition, when coexpressed with WNK4, KS-WNK1 promotes its activating phosphorylation. Thus, in the DCT the KS-WNK1-WNK4 interaction may be important to achieve full activation of WNK4 under certain conditions. These results agree with in vivo observations showing that in situations in which NCC is activated, like for instance, in mice fed with low K^+ diet or in KLHL3-R528H mice, KS-WNK1, WNK4, and SPAK form intracytoplasmic aggregates known as WNK bodies. Formation of these structures requires the presence of KS-WNK1, since they are not observed in KS-WNK1 knockout mice under similar conditions (Boyd-Shiwerski *et al*, 2018; Thomson *et al*, 2020) (Ostrosky-Frid *et al*, 2021).

In vivo evidence of a positive role of KS-WNK1 on NCC activity was recently provided with the description of mutations in the region encoding the acidic domain of WNK1 that cause a mild

FHHt phenotype in humans (hyperkalemic metabolic acidosis) (Louis-Dit-Picard *et al*, 2020). No hypertension was observed in these patients. However, a mouse model carrying a deletion of one amino acid residue of the acidic domain of WNK1 provided some data indicative of a mild volume expansion phenotype (lower renal renin mRNA levels). Of note, these mice presented higher levels of SPAK, pSPAK/OSR1, NCC, and pNCC, as well as a similar clinical phenotype to the patients. The mutation of the acidic domain is expected to produce an increase in expression of the protein, as the acidic domain is the binding site for the KLHL3-CUL3 E3 complex that regulates WNK degradation. In vitro data provided in the same study confirmed that KS-WNK1 is highly sensitive to KLHL3-targeted degradation, which is prevented in the presence of the acidic domain mutations. Interestingly, however, the long form of WNK1 (L-WNK1) was much less sensitive to KLHL3-targeted degradation. This, together with the evidence explained in a previous section suggesting that L-WNK1 is not expressed in the DCT, supports the notion that KS-WNK1 overexpression in these patients and mice is responsible for the mild FHHt phenotype.

Nevertheless, the role of KS-WNK1 in DCT physiology is still controversial, and this is mainly derived from the phenotype observed in KS-WNK1 knockout mice. A few years back, Hadchouel *et al* and Liu *et al* generated KS-WNK1 knockout models that presented increased pNCC and NCC levels (Hadchouel *et al*, 2010; Liu *et al*, 2011). These observations were originally well accepted given that initial in vitro experiments performed with KS-WNK1 had suggested that KS-WNK1 exerted a negative role on NCC activity (Subramanya *et al*, 2006). However, despite the higher pNCC levels, no FHHt-like electrolytic alterations were observed. It has been suggested that activation of NCC in these models could be secondary (Ostrosky-Frid *et al*, 2019); that is, given that recent studies suggest a role for KS-WNK1 in the response to hypokalemia (Boyd-Shiwerski *et al*, 2018), it is possible that KS-WNK1 knockout mice have a potassium losing phenotype that could be compensated by a WNK4-induced activation of NCC.

The above-mentioned role of KS-WNK1 on NCC regulation in response to decreases in $[\text{K}^+]_e$ agrees with the recent observation that levels of KS-WNK1 protein are greatly upregulated in mice on low K^+ diet (Ostrosky-Frid *et al*, 2021). Interestingly, KS-WNK1 protein levels were undetectable in blots of mice on normal diet, but were high in KLHL3-R528H animals, suggesting that the low levels in wild-type mice on normal chow may be due to a high rate of KLHL3-targeted degradation, and that upregulation in the low K^+ diet may be due to decreased activity of the KLHL3-CUL3 E3 ubiquitin ligase (Ishizawa *et al*, 2016). Thus, KS-WNK1 is highly sensitive to the KLHL3-CUL3 E3 ubiquitin ligase complex that in mice on normal chow is active, complicating the understanding of the physiological role of this variant.

Concluding remarks

The discovery of genes involved in the regulation of DCT function opened the possibility to elucidate, at the molecular level, a complex network of transporters, kinases, ubiquitin ligases, and protein phosphatases involved in the modulation of renal salt reabsorption in this nephron segment that defines blood pressure levels and K^+ homeostasis. The description of the indirect effect that NCC activity

Pending issues

- i Understanding the mechanisms that maintain mutant WNK4 active in FHHT, despite the electrolytic alterations and increased blood pressure that would be expected to turn off the pathway.
- ii Elucidating the physiological role of KS-WNK1.
- iii Uncovering the kinases responsible for the *in vivo* phosphorylation of RRXS motifs in WNK4 and KLHL3 in response to hypokalemia and volume depletion.
- iv Uncovering the molecular mechanisms that lead to distal nephron remodeling in response to changes in K⁺ intake and in response to alterations in NCC function.
- v Understanding the molecular mechanism of FHHT in patients with the missense mutations R1185C and K1169E in WNK4 that lie within the C-terminal domain of the protein.

exerts on renal K⁺ secretion and the characterization of the molecular pathways that mediate NCC regulation in response to changes in [K⁺]_e have promoted much recent interest among researchers in the field, as it has been proposed that this pathway may be key to explain, at least partly, the effect of dietary K⁺ consumption on blood pressure levels in the population. Despite significant advances made, many questions remain unanswered. For instance, FHHT-causative mutations in WNK4 or in the KLHL3-CUL3 E3 complex result in increased expression of WNK4. However, mechanisms have been described that would be expected to turn off the kinase under conditions of volume expansion and hyperkalemia. Thus, it is unclear why these mechanisms do not compensate for the increase in kinase's expression. In this regard, in heterologous expression systems, exogenously expressed WNK4 is inhibited under high [Cl⁻]_i and activity /phosphorylation of downstream components cannot be restored by increasing the amount of WNK4 expressed. This suggests that mutations in WNK4 or in KLHL3/CUL3 complex proteins may also alter the modulation of WNK4 by intracellular chloride. The role of the KS-WNK1 isoform in this setting may be critical since apparently the presence of KS-WNK1 modulates WNK4's sensibility to chloride. It is much what we have learned in the past decade about molecular mechanism of hypertension; however, there is still much more to explore. As the late Gerhard Giebisch, one of the greatest mentors for all renal physiologists, used to say: "we remain confused, but confused on a higher level".

Acknowledgements

We thank all members of the Molecular Physiology Unit for helpful discussions. This work was supported by DK51496 grant from NIH to DHE and GG, A1-S-8290 and 101720 grants from CONACyT, Mexico to GG and MC-B, respectively, and IN201519 grant from UNAM: DGAPA-PAPIIT to GG.

Author contributions

MC-B, DHE, and GG contributed to the conception, the writing, and the editing of the manuscript.

Conflict of interest

The authors declare that they have no conflict of interest.

For more information

- i Gitelman's syndrome OMIM entry: <https://www.omim.org/entry/263800>
- ii FHHT type A OMIM entry: <https://www.omim.org/entry/145260>
- iii FHHT type B OMIM entry: <https://www.omim.org/entry/614491>
- iv FHHT type C OMIM entry: <https://www.omim.org/entry/614492>
- v FHHT type D OMIM entry: <https://www.omim.org/entry/614495>
- vi FHHT type E OMIM entry: <https://www.omim.org/entry/614496>
- vii Bartter syndrome type 3 OMIM entry: <https://www.omim.org/entry/607364>
- viii SESAME/EAST syndrome OMIM entry: <https://www.omim.org/entry/612780>
- ix Author's website: <https://www.biomedicas.unam.mx/personal-academico/gerardo-gamba-ayala/>
- x Author's website: <https://www.incmnsz.mx/Investigacion/investigador.jsp?id=3>
- xi Author's website: <https://www.ohsu.edu/providers/david-h-ellison-md>

References

- Abdel Khalek W, Rafael C, Loisel-Ferreira I, Kouranti I, Clauser E, Hadchouel J, Jeunemaitre X (2019) Severe arterial hypertension from cullin 3 mutations is caused by both renal and vascular effects. *J Am Soc Nephrol* 30: 811–823
- Acuna R, Martinez-de-la-Maza L, Ponce-Coria J, Vazquez N, Ortal-Vite P, Pacheco-Alvarez D, Bobadilla NA, Gamba G (2011) Rare mutations in SLC12A1 and SLC12A3 protect against hypertension by reducing the activity of renal salt cotransporters. *Jhypertens* 29: 475–483
- Adroge HJ, Madias NE (2007) Sodium and potassium in the pathogenesis of hypertension. *N Engl J Med* 356: 1966–1978
- Argaiz ER, Chavez-Canales M, Ostrosky-Frid M, Rodriguez-Gama A, Vazquez N, Gonzalez-Rodriguez X, Garcia-Valdes J, Hadchouel J, Ellison DH, Gamba G (2018) Kidney-specific WNK1 isoform (KS-WNK1) is a potent activator of WNK4 and NCC. *Am J Physiol Renal Physiol* 315: F734–F745
- Bazua-Valenti S, Chavez-Canales M, Rojas-Vega L, Gonzalez-Rodriguez X, Vazquez N, Rodriguez-Gama A, Argaiz ER, Melo Z, Plata C, Ellison DH *et al* (2015) The effect of WNK4 on the Na⁺-Cl⁻ cotransporter is modulated by intracellular chloride. *J Am Soc Nephrol* 26: 1781–1786
- Bazúa-Valenti S, Rojas-Vega L, Castañeda-Bueno M, Barrera-Chimal J, Bautista R, Cervantes-Pérez LG, Vázquez N, Plata C, Murillo-de-Ozores AR, González-Mariscal L *et al* (2018) The calcium-sensing receptor increases activity of the renal NCC through the WNK4-SPAK pathway. *J Am Soc Nephrol* 29: 1838–1848
- Bockenbauer D, Feather S, Stanescu HC, Bandulik S, Zdebik AA, Reichold M, Tobin J, Lieberer E, Sterner C, Landouere G *et al* (2009) Epilepsy, ataxia, sensorineural deafness, tubulopathy, and KCNJ10 mutations. *N Eng J Med* 360: 1960–1970
- Boettger T, Hubner CA, Maier H, Rust MB, Beck FX, Jentsch TJ (2002) Deafness and renal tubular acidosis in mice lacking the K-Cl co- transporter Kcc4. *Nature* 416: 874–878
- Boscardin E, Perrier R, Sergi C, Maillard MP, Loffing J, Loffing-Cueni D, Koesters R, Rossier BC, Hummler E (2018) Plasma potassium determines NCC abundance in adult kidney-specific gammaENaC knockout. *J Am Soc Nephrol* 29: 977–990
- Boyden LM, Choi M, Choate KA, Nelson-Williams CJ, Farhi A, Toka HR, Tikhonova IR, Bjornson R, Mane SM, Colussi G *et al* (2012) Mutations in

- kelch-like 3 and cullin 3 cause hypertension and electrolyte abnormalities. *Nature* 482: 98–102
- Boyd-Shiwariski CR, Shiwariski DJ, Roy A, Namboodiri HN, Nkashama LJ, Xie J, McClain KL, Marciszyn A, Kleyman TR, Tan RJ et al (2018) Potassium-regulated distal tubule WNK bodies are kidney-specific WNK1 dependent. *Mol Biol Cell* 29: 499–509
- Brooks AM, Owens M, Sayer JA, Salzmann M, Ellard S, Vaidya B (2012) Pseudohypoaldosteronism type 2 presenting with hypertension and hyperkalaemia due to a novel mutation in the WNK4 gene. *QJM* 105: 791–194
- Cai H, Cebotaru V, Wang YH, Zhang XM, Cebotaru L, Guggino SE, Guggino WB (2006) WNK4 kinase regulates surface expression of the human sodium chloride cotransporter in mammalian cells. *Kidney Int* 69: 2162–2170
- Castaneda-Bueno M, Arroyo JP, Zhang J, Puthumana J, Yarborough 3rd O, Shibata S, Rojas-Vega L, Gamba G, Rinehart J, Lifton RP (2017) Phosphorylation by PKC and PKA regulate the kinase activity and downstream signaling of WNK4. *Proc Natl Acad Sci USA* 114: E879–E886
- Castaneda-Bueno M, Cervantes-Perez LG, Vazquez N, Uribe N, Kantesaria S, Morla L, Bobadilla NA, Doucet A, Alessi DR, Gamba G (2012) Activation of the renal Na⁺:Cl⁻ cotransporter by angiotensin II is a WNK4-dependent process. *Proc Natl Acad Sci USA* 109: 7929–7934
- Castaneda-Bueno M, Cervantes-Perez LG, Rojas-Vega L, Arroyo-Garza I, Vazquez N, Moreno E, Gamba G (2014) Modulation of NCC activity by low and high K⁺ intake: Insights into the signaling pathways involved. *Am J Physiol Renal Physiol* 306: F1507–F1519
- Chavez-Canales M, Arroyo JP, Ko B, Vazquez N, Bautista R, Castaneda-Bueno M, Bobadilla NA, Hoover RS, Gamba G (2013) Insulin increases the functional activity of the renal NaCl cotransporter. *J Hypertens* 31: 303–311
- Chávez-Canales M, Zhang C, Soukaseum C, Moreno E, Pacheco-Alvarez D, Vidal-Petiot E, Castañeda-Bueno M, Vázquez N, Rojas-Vega L, Meermeier NP et al (2014) WNK-SPAK-NCC cascade revisited: WNK1 stimulates the activity of the Na-Cl cotransporter via SPAK, an effect antagonized by WNK4. *Hypertension* 64: 1047–1053
- Chen JC, Lin MX, Cheng CJ (2021a) WNK4 kinase: role of chloride sensing in the distal convoluted tubule. *Curr Opin Nephrol Hypertens* 30: 166–172
- Chen JC, Lo YF, Lin YW, Lin SH, Huang CL, Cheng CJ (2019) WNK4 kinase is a physiological intracellular chloride sensor. *Proc Natl Acad Sci USA* 116: 4502–4507
- Chen L, Chou CL, Knepper MA (2021b) A Comprehensive map of mRNAs and their isoforms across all 14 renal tubule segments of mouse. *J Am Soc Nephrol* 32: 897–912
- Cornelius RJ, Si J, Cuevas CA, Nelson JW, Gratreak BDK, Pardi R, Yang CL, Ellison DH (2018) Renal COP9 signalosome deficiency alters CUL3-KLHL3-WNK signaling pathway. *J Am Soc Nephrol* 29: 2627–2640
- Cruz-Rangel S, Gamba G, Ramos-Mandujano G, Pasantes-Morales H (2012) Influence of WNK3 on intracellular chloride concentration and volume regulation in HEK293 cells. *Pflugers Arch* 464: 317–330
- Cuevas CA, Su XT, Wang MX, Terker AS, Lin DH, McCormick JA, Yang CL, Ellison DH, Wang WH (2017) Potassium sensing by renal distal tubules requires Kir4.1. *J Am Soc Nephrol* 28: 1814–1825
- Curtis JJ, Luke RG, Dustan HP, Kashgarian M, Whelchel JD, Jones P, Diethelm AG (1983) Remission of essential hypertension after renal transplantation. *New Engl J Med* 309: 1009–1015
- Czogalla J, Vohra T, Penton D, Kirschmann M, Craigie E, Loffing J (2016) The mineralocorticoid receptor (MR) regulates ENaC but not NCC in mice with random MR deletion. *Pflugers Arch* 468: 849–858
- Delalay C, Lu J, Houot AM, Disse-Nicodeme S, Gasc JM, Corvol P, Jeunemaitre X (2003) Multiple promoters in the WNK1 gene: one controls expression of a kidney-specific kinase-defective isoform. *Mol Cell Biol* 23: 9208–9221
- Dowd BF, Forbush B (2003) PASK (proline-alanine-rich STE20-related kinase), a regulatory kinase of the Na-K-Cl cotransporter (NKCC1). *J Biol Chem* 278: 27347–27353
- Ferdaus MZ, Miller LN, Agbor LN, Saritas T, Singer JD, Sigmund CD, McCormick JA (2017) Mutant Cullin 3 causes familial hyperkalemic hypertension via dominant effects. *JCI Insight* 2: e96700
- Filippini T, Naska A, Kasdagli M-I, Torres D, Lopes C, Carvalho C, Moreira P, Malavolti M, Orsini N, Whelton PK et al (2020) Potassium intake and blood pressure: a dose-response meta-analysis of randomized controlled trials. *J Am Heart Assoc* 9: e015719
- Gagnon KB, Delpire E (2010) On the substrate recognition and negative regulation of SPAK, a kinase modulating Na⁺-K⁺-2Cl⁻ cotransport activity. *Am J Physiol Cell Physiol* 299: C614–C620
- Gamba G (2005) Molecular physiology and pathophysiology of the electroneutral cation-chloride cotransporters. *Physiol Rev* 85: 423–493
- Glover M, Mercier ZA, Figg N, O'Shaughnessy KM (2010) The activity of the thiazide-sensitive Na⁽⁺⁾-Cl cotransporter is regulated by protein phosphatase PP4. *Can J Physiol Pharmacol* 88: 986–995
- Golbang AP, Murthy M, Hamad A, Liu CH, Cope G, Hoff WV, Cuthbert A, O'Shaughnessy KM (2005) A new kindred with pseudohypoaldosteronism type II and a novel mutation (S64D>H) in the acidic motif of the WNK4 gene. *Hypertension* 46: 295–300
- Gong H, Tang Z, Yang Y, Sun L, Zhang W, Wang W, Cui B, Ning G (2008) A patient with pseudohypoaldosteronism type II caused by a novel mutation in WNK4 gene. *Endocrine* 33: 230–234
- Grimm PR, Coleman R, Delpire E, Welling PA (2017) Constitutively active SPAK causes hyperkalemia by activating NCC and remodeling distal tubules. *J Am Soc Nephrol* 28: 2597–2606
- Guyton AC (1991) Blood pressure control—special role of the kidneys and body fluids. *Science* 252: 1813–1816
- Hadchouel J, Ellison DH, Gamba G (2016) Regulation of renal electrolyte transport by WNK and SPAK-OSR1 kinases. *Annu Rev Physiol* 78: 367–389
- Hadchouel J, Soukaseum C, Busst C, Zhou X-O, Baudrie V, Zurrer T, Cambillau M, Elghozi J-L, Lifton RP, Loffing J et al (2010) Decreased ENaC expression compensates the increased NCC activity following inactivation of the kidney-specific isoform of WNK1 and prevents hypertension. *Proc Natl Acad Sci USA* 107: 18109–18114
- Hennings JC, Andrini O, Picard N, Paulais M, Huebner AK, Cayuqueo IKL, Bignon Y, Keck M, Cornière N, Böhm D et al (2017) The ClC-K2 chloride channel is critical for salt handling in the distal nephron. *J Am Soc Nephrol* 28: 209–217
- Hoorn EJ, Walsh SB, McCormick JA, Fürstenberg A, Yang C-L, Roeschel T, Paliege A, Howie AJ, Conley J, Bachmann S et al (2011) The calcineurin inhibitor tacrolimus activates the renal sodium chloride cotransporter to cause hypertension. *Nat Med* 17: 1304–1309
- Howard HC, Mount DB, Rochefort D, Byun N, Dupré N, Lu J, Fan X, Song L, Rivière J-B, Prévost C et al (2002) The K-Cl cotransporter KCC3 is mutant in a severe peripheral neuropathy associated with agenesis of the corpus callosum. *Nat Genet* 32: 384–392
- Ishizawa K, Xu N, Loffing J, Lifton RP, Fujita T, Uchida S, Shibata S (2016) Potassium depletion stimulates Na-Cl cotransporter via phosphorylation and inactivation of the ubiquitin ligase Kelch-like 3. *Biochem Biophys Res Commun* 480: 745–751

- Ivy JR, Bailey MA (2014) Pressure natriuresis and the renal control of arterial blood pressure. *J Physiol* 592: 3955–3967
- Kim GH, Masilamani S, Turner R, Mitchell C, Wade JB, Knepper MA (1998) The thiazide-sensitive Na-Cl cotransporter is an aldosterone-induced protein. *Proc Natl Acad Sci USA* 95: 14552–14557
- Lalioi MD, Zhang J, Volkman HM, Kahle KT, Hoffmann KE, Toka HR, Nelson-Williams C, Ellison DH, Flavell R, Booth CJ et al (2006) Wnk4 controls blood pressure and potassium homeostasis via regulation of mass and activity of the distal convoluted tubule. *Nat Genet* 38: 1124–1132
- Lazelle RA, McCully BH, Terker AS, Himmerkus N, Blankenstein K, Mutig K, Bleich M, Bachmann S, Yang CL, Ellison DH (2015) Renal deletion of 12 kDa FK506-binding protein attenuates tacrolimus-induced hypertension. *J Am Soc Nephrol* 27: 1456–1464
- Lee JW, Chou CL, Knepper MA (2015) Deep sequencing in microdissected renal tubules identifies nephron segment-specific transcriptomes. *J Am Soc Nephrol* 26: 2669–2677
- Liu Z, Xie J, Wu T, Truong T, Auchus RJ, Huang CL (2011) Downregulation of NCC and NKCC2 cotransporters by kidney-specific WNK1 revealed by gene disruption and transgenic mouse models. *Hum Mol Genet* 20: 855–866
- Loffing J, Loffing-Cueni D, Hegyi I, Kaplan MR, Hebert SC, Hir ML, Kaissling B (1996) Thiazide treatment of rats provokes apoptosis in distal tubule cells. *Kidney Int* 50: 1180–1190
- Louis-Dit-Picard H, Barc J, Trujillano D, Miserey-Lenkei S, Bouatia-Naji N, Pylypenko O, Beaurain G, Bonnefond A, Sand O, Simian C et al (2012) KLHL3 mutations cause familial hyperkalemic hypertension by impairing ion transport in the distal nephron. *Nat Genet* 44: 456–460
- Louis-Dit-Picard H, Kouranti I, Rafael C, Loisel-Ferreira I, Chavez-Canales M, Abdel Khalek W, Argaiz E, Baron S, Vacle S, Migeon T et al (2020) Mutations affecting the conserved acidic WNK1 motif cause inherited hyperkalemic hyperchloremic acidosis. *J Clin Invest* 130: 6379–6394
- van der Lubbe N, Lim CH, Fenton RA, Meima ME, Jan Danser AH, Zietse R, Hoorn EJ (2011) Angiotensin II induces phosphorylation of the thiazide-sensitive sodium chloride cotransporter independent of aldosterone. *Kidney Int* 79: 66–76
- van der Lubbe N, Lim CH, Meima ME, van Veghel R, Rosenbaek LL, Mutig K, Danser AH, Fenton RA, Zietse R, Hoorn EJ (2012) Aldosterone does not require angiotensin II to activate NCC through a WNK4-SPAK-dependent pathway. *Pflugers Arch* 463: 853–863
- Ma Y, He FJ, Sun QI, Yuan C, Kieneker LM, Curhan GC, MacGregor GA, Bakker SJL, Campbell NRC, Wang M et al (2021) 24-hour urinary sodium and potassium excretion and cardiovascular risk. *N Engl J Med* <https://doi.org/10.1056/NEJMoa2109794>
- Matsunohita N, Nozu K, Shono A, Nozu Y, Fu XJ, Morisada N, Kamiyoshi N, Ohtsubo H, Ninchoji T, Minamikawa S et al (2016) Differential diagnosis of Bartter syndrome, Gitelman syndrome, and pseudo-Bartter/Gitelman syndrome based on clinical characteristics. *Genet Med* 18: 180–188
- Mente A, O'Donnell MJ, Rangarajan S, McQueen MJ, Poirier P, Wielgosz A, Morrison H, Li W, Wang X, Di C et al (2014) Association of urinary sodium and potassium excretion with blood pressure. *N Engl J Med* 371: 601–611
- Mu S, Shimosawa T, Ogura S, Wang H, Uetake Y, Kawakami-Mori F, Marumo T, Yatomi Y, Geller DS, Tanaka H et al (2011) Epigenetic modulation of the renal beta-adrenergic-WNK4 pathway in salt-sensitive hypertension. *Nat Med* 17: 573–581
- Mukherjee A, Yang CL, McCormick JA, Martz K, Sharma A, Ellison DH (2021) Roles of WNK4 and SPAK in K(+)-mediated dephosphorylation of the NaCl cotransporter. *Am J Physiol Renal Physiol* 320: F719–F733
- Murillo-de-Ozores AR, Chavez-Canales M, de Los HP, Gamba G, Castaneda-Bueno M (2020) Physiological processes modulated by the chloride-sensitive WNK-SPAK/OSR1 kinase signaling pathway and the cation-coupled chloride cotransporters. *Front Physiol* 11: 585907
- Murillo-de-Ozores AR, Rodríguez-Gama A, Bazúa-Valenti S, Leyva-Ríos K, Vázquez N, Pacheco-Álvarez D, De La Rosa-Velázquez IA, Wengi A, Stone KL, Zhang J et al (2018) C-terminally truncated, kidney-specific variants of the WNK4 kinase lack several sites that regulate its activity. *J Biol Chem* 293: 12209–12221
- Murillo-de-Ozores AR, Rodriguez-Gama A, Carbajal-Contreras H, Gamba G, Castaneda-Bueno M (2021) WNK4 kinase: from structure to physiology. *Am J Physiol Renal Physiol* 320: F378–F403
- Na T, Wu G, Peng JB (2012) Disease-causing mutations in the acidic motif of WNK4 impair the sensitivity of WNK4 kinase to calcium ions. *Bioch Biophys Res Commun* 419: 293–298
- Nomura N, Shoda W, Wang Y, Mandai S, Furusho T, Takahashi D, Zeniya M, Sohara E, Rai T, Uchida S (2018) Role of ClC-K and barttin in low potassium-induced sodium chloride cotransporter activation and hypertension in mouse kidney. *Biosci Rep* 38: BSR20171243
- Ohta A, Schumacher FR, Mehellou Y, Johnson C, Knebel A, Macartney TJ, Wood NT, Alessi DR, Kurz T (2013) The CUL3-KLHL3 E3 ligase complex mutated in Gordon's hypertension syndrome interacts with and ubiquitylates WNK isoforms; disease-causing mutations in KLHL3 and WNK4 disrupt interaction. *Biochem J* 451: 111–122
- O'Reilly M, Marshall E, Speirs HJ, Brown RW (2003) WNK1, a gene within a novel blood pressure control pathway, tissue-specifically generates radically different isoforms with and without a kinase domain. *J Am Soc Nephrol* 14: 2447–2456
- Ostrosky-Frid M, Castaneda-Bueno M, Gamba G (2019) Regulation of the renal NaCl cotransporter by the WNK/SPAK pathway: lessons learned from genetically altered animals. *Am J Physiol Renal Physiol* 316: F146–F158
- Ostrosky-Frid M, Chavez-Canales M, Romo M, Grunfeld B, Simsoló R, Segura-Kato Y, Tusie-Luna T, Gamba G (2020) Familial hyperkalemic hypertension genotype with a negative phenotype: A CUL3 mosaicism. *Am J Hypertens* 33: 278–281
- Ostrosky-Frid M, Chavez-Canales M, Zhang J, Andrukova O, Argaiz ER, Lerdo de Tejada F, Murillo-de-Ozores AR, Sanchez-Navarro A, Rojas-Vega L, Bobadilla NA et al (2021) Role of KLHL3 and dietary K(+) in regulating KS-WNK1 expression. *Am J Physiol Renal Physiol* 320: F734–F747
- Pacheco-Alvarez D, Carrillo-Perez DL, Mercado A, Leyva-Rios K, Moreno E, Hernandez-Mercado E, Castaneda-Bueno M, Vazquez N, Gamba G (2020) WNK3 and WNK4 exhibit opposite sensitivity with respect to cell volume and intracellular chloride concentration. *Am J Physiol Cell Physiol* 319: C371–C380
- Pacheco-Alvarez D, San Cristobal P, Meade P, Moreno E, Vazquez N, Munoz E, Diaz A, Juarez ME, Gimenez I, Gamba G (2006) The Na-Cl cotransporter is activated and phosphorylated at the amino terminal domain upon intracellular chloride depletion. *J Biol Chem* 281: 28755–28763
- Paulais M, Bloch-Faure M, Picard N, Jacques T, Ramakrishnan SK, Keck M, Sohet F, Eladari D, Houillier P, Lourdel S et al (2011) Renal phenotype in mice lacking the Kir5.1 (Kcnj16) K+ channel subunit contrasts with that observed in SeSAME/EAST syndrome. *Proc Natl Acad Sci USA* 108: 10361–10366
- Pedersen NB, Hofmeister MV, Rosenbaek LL, Nielsen J, Fenton RA (2010) Vasopressin induces phosphorylation of the thiazide-sensitive sodium chloride cotransporter in the distal convoluted tubule. *Kidney Intern* 78: 160–169

- Penton D, Czogalla J, Wengi A, Himmerkus N, Loffing-Cueni D, Carrel M, Rajaram RD, Staub O, Bleich M, Schweda F et al (2016) Extracellular K⁺ rapidly controls NaCl cotransporter phosphorylation in the native distal convoluted tubule by Cl⁻-dependent and independent mechanisms. *J Physiol* 594: 6319–6331
- Penton D, Moser S, Wengi A, Czogalla J, Rosenbaek LL, Rigendinger F, Faresse N, Martins JR, Fenton RA, Loffing-Cueni D et al (2019) Protein phosphatase 1 inhibitor-1 mediates the cAMP-dependent stimulation of the renal NaCl cotransporter. *J Am Soc Nephrol* 30: 737–750
- Piala AT, Moon TM, Akella R, He H, Cobb MH, Goldsmith EJ (2014) Chloride sensing by WNK1 involves inhibition of autophosphorylation. *Sci Signal* 7: ra41
- Piechotta K, Lu J, Delpire E (2002) Cation chloride cotransporters interact with the stress-related kinases Ste20-related proline-alanine-rich kinase (SPAK) and oxidative stress response 1 (OSR1). *J Biol Chem* 277: 50812–50819
- Rafiqi FH, Zuber AM, Glover M, Richardson C, Fleming S, Jovanovic S, Jovanovic A, O'Shaughnessy KM, Alessi DR (2010) Role of the WNK-activated SPAK kinase in regulating blood pressure. *EMBO Mol Med* 2: 63–75
- Reichold M, Zdebek AA, Lieberer E, Rapedius M, Schmidt K, Bandulik S, Sterner C, Tegtmeyer I, Penton D, Baukowitz T et al (2010) KCNJ10 gene mutations causing EAST syndrome (epilepsy, ataxia, sensorineural deafness, and tubulopathy) disrupt channel function. *Proc Natl Acad Sci USA* 107: 14490–14495
- Rengarajan S, Lee DH, Oh YT, Delpire E, Youn JH, McDonough AA (2014) Increasing plasma [K⁺] by intravenous potassium infusion reduces NCC phosphorylation and drives kaliuresis and natriuresis. *Am J Physiol Renal Physiol* 306: F1059–1068
- Richardson C, Rafiqi FH, Karlsson HK, Moleleki N, Vandewalle A, Campbell DG, Morrice NA, Alessi DR (2008) Activation of the thiazide-sensitive Na⁺-Cl⁻ cotransporter by the WNK-regulated kinases SPAK and OSR1. *J Cell Sci* 121: 675–684
- Rinehart J, Vazquez N, Kahle KT, Hodson CA, Ring AM, Gulcicek EE, Louvi A, Bobadilla NA, Gamba G, Lifton RP (2011) WNK2 is a novel regulator of essential neuronal cation-chloride cotransporters. *J Biol Chem* 286: 30171–30180
- Rojas-Vega L, Gamba G (2016) Mini-review: regulation of the renal NaCl cotransporter by hormones. *Am J Physiol Renal Physiol* 310: F10–F14
- Rojas-Vega L, Jimenez AR, Bazua-Valenti S, Arroyo-Garza I, Jimenez JV, Gomez-Ocadiz R, Carrillo-Perez DL, Moreno E, Morales-Buenrostro LE, Alberu J et al (2015a) Increased phosphorylation of the renal Na⁺-Cl⁻ cotransporter in male kidney transplant recipient patients with hypertension: a prospective cohort. *Am J Physiol Renal Physiol* 309: F836–F842
- Rojas-Vega L, Reyes-Castro LA, Ramirez V, Bautista-Pérez R, Rafael C, Castañeda-Bueno M, Meade P, de los Heros P, Arroyo-Garza I, Bernard V et al (2015b) Ovarian hormones and prolactin increase renal NaCl cotransporter phosphorylation. *Am J Physiol Renal Physiol* 308: F799–808
- Sabath E, Meade P, Berkman J, De Los HP, Moreno E, Bobadilla NA, Vazquez N, Ellison DH, Gamba G (2004) Pathophysiology of functional mutations of the thiazide-sensitive Na-Cl cotransporter in gitelman disease. *Am J Physiol Renal Physiol* 287: F195–F203
- Sacks FM, Svetkey LP, Vollmer WM, Appel LJ, Bray GA, Harsha D, Obarzanek E, Conlin PR, Miller ER, Simons-Morton DG et al (2001) Effects on blood pressure of reduced dietary sodium and the Dietary Approaches to Stop Hypertension (DASH) diet. DASH-Sodium Collaborative Research Group. *N Engl J Med* 344: 3–10
- Sasaki E, Susa K, Mori T, Isobe K, Araki Y, Inoue Y, Yoshizaki Y, Ando F, Mori Y, Mandai S et al (2017) KLHL3 knockout mice reveal the physiological role of KLHL3 and the pathophysiology of pseudohypoaldosteronism type II caused by mutant KLHL3. *Mol Cell Biol* 37: e00508–e516
- Schlingmann KP, Renigunta A, Hoorn EJ, Forst A-L, Renigunta V, Atanasov V, Mahendran S, Barakat TS, Gillion V, Godefroid N et al (2021) Defects in KCNJ16 cause a novel tubulopathy with hypokalemia, salt wasting, disturbed acid-base homeostasis, and sensorineural deafness. *J Am Soc Nephrol* 32: 1498–1512
- Schnoz C, Carrel M, Loffing J (2020) Loss of sodium chloride co-transporter impairs the outgrowth of the renal distal convoluted tubule during renal development. *Nephrol Dial Transplant* 35: 411–432
- Scholl UI, Choi M, Liu T, Ramaekers VT, Hausler MG, Grimmer J, Tobe SW, Farhi A, Nelson-Williams C, Lifton RP (2009) Seizures, sensorineural deafness, ataxia, mental retardation, and electrolyte imbalance (SeSAME syndrome) caused by mutations in KCNJ10. *Proc Natl Acad Sci USA* 106: 5842–5847
- Shekarabi M, Girard N, Rivière J-B, Dion P, Houle M, Toulouse A, Lafrenière RG, Vercauteren F, Hince P, Laganier J et al (2008) Mutations in the nervous system-specific HSN2 exon of WNK1 cause hereditary sensory neuropathy type II. *J Clin Invest* 118: 2496–2505
- Shibata S, Arroyo JP, Castañeda-Bueno M, Puthumana J, Zhang J, Uchida S, Stone KL, Lam TT, Lifton RP (2014) Angiotensin II signaling via protein kinase C phosphorylates Kelch-like 3, preventing WNK4 degradation. *Proc Natl Acad Sci USA* 111: 15556–15561
- Shibata S, Zhang J, Puthumana J, Stone KL, Lifton RP (2013) Kelch-like 3 and Cullin 3 regulate electrolyte homeostasis via ubiquitination and degradation of WNK4. *Proc Natl Acad Sci USA* 110: 7838–7843
- Shoda W, Nomura N, Ando F, Mori Y, Mori T, Sahara E, Rai T, Uchida S (2017) Calcineurin inhibitors block sodium-chloride cotransporter dephosphorylation in response to high potassium intake. *Kidney Int* 91: 402–411
- Simon DB, Nelson-Williams C, Johnson-Bia M, Ellison D, Karet FE, Morey-Molina A, Vaara I, Iwata F, Cushner HM, Koolen M et al (1996) Gitelman's variant of Bartter's syndrome, inherited hypokalaemic alkalosis, is caused by mutations in the thiazide-sensitive Na-Cl cotransporter. *Nat Genet* 12: 24–30
- Sorensen MV, Grossmann S, Roesinger M, Gresko N, Todkar AP, Barmettler G, Ziegler U, Odermatt A, Loffing-Cueni D, Loffing J (2013) Rapid dephosphorylation of the renal sodium chloride cotransporter in response to oral potassium intake in mice. *Kidney Int* 83: 811–824
- Su XT, Klett NJ, Sharma A, Allen CN, Wang WH, Yang CL, Ellison DH (2020) Distal convoluted tubule Cl⁻ concentration is modulated via K⁽⁺⁾ channels and transporters. *Am J Physiol Renal Physiol* 319: F534–F540
- Subramanya AR, Yang CL, Zhu X, Ellison DH (2006) Dominant-negative regulation of WNK1 by its kidney-specific kinase-defective isoform. *Am J Physiol Renal Physiol* 290: F619–F624
- Susa K, Sahara E, Rai T, Zeniya M, Mori Y, Mori T, Chiga M, Nomura N, Nishida H, Takahashi D et al (2014) Impaired degradation of WNK1 and WNK4 kinases causes PHAI1 in mutant KLHL3 knock-in mice. *Hum Mol Genet* 23: 5052–5060
- Susa K, Sahara E, Takahashi D, Okado T, Rai T, Uchida S (2017) WNK4 is indispensable for the pathogenesis of pseudohypoaldosteronism type II caused by mutant KLHL3. *Biochem Biophys Res Commun* 491: 727–732
- Tanemoto M, Abe T, Ito S (2005) PDZ-binding and di-hydrophobic motifs regulate distribution of Kir4.1 channels in renal cells. *J Am Soc Nephrol* 16: 2608–2614
- Terker A, Yang CL, Ellison D (2015a) Physiological changes in plasma (K⁺) affect NCC function via Cl⁻ inhibition of WNK4. *FASEB J* 29: 966
- Terker AS, Yarbrough B, Ferdaus MZ, Lazelle RA, Erspamer KJ, Meermeier NP, Park HJ, McCormick JA, Yang CL, Ellison DH (2016a) Direct and indirect

- mineralocorticoid effects determine distal salt transport. *J Am Soc Nephrol* 27: 2436–2445
- Terker A, Zhang C, McCormick J, Lazelle R, Zhang C, Meermeier N, Siler D, Park H, Fu YI, Cohen D et al (2015b) Potassium modulates electrolyte balance and blood pressure through effects on distal cell voltage and chloride. *Cell Metab* 21: 39–50
- Terker AS, Zhang C, Erspamer KJ, Gamba G, Yang CL, Ellison DH (2016b) Unique chloride-sensing properties of WNK4 permit the distal nephron to modulate potassium homeostasis. *Kidney Int* 89: 127–134
- Thomson MN, Cuevas CA, Bewarder TM, Dittmayer C, Miller LN, Si J, Cornelius RJ, Su X-T, Yang C-L, McCormick JA et al (2020) WNK bodies cluster WNK4 and SPAK/OSR1 to promote NCC activation in hypokalemia. *Am J Physiol Renal Physiol* 318: F216–F228
- Tucker SJ, Bond CT, Herson P, Pessia M, Adelman JP (1996) Inhibitory interactions between two inward rectifier K⁺ channel subunit mediated by the transmembrane domains. *J Biol Chem* 271: 5866–5870
- Vallon V, Schroth J, Lang F, Kuhl D, Uchida S (2009) Expression and phosphorylation of the Na-Cl-cotransporter NCC in vivo is regulated by dietary salt, potassium and SGK1. *Am J Physiol Renal Physiol* 297: F704–F712
- Verissimo F, Jordan P (2001) WNK kinases, a novel protein kinase subfamily in multi-cellular organisms. *Oncogene* 20: 5562–5569
- Vidal-Petiot E, Cheval L, Faugueroux J, Malard T, Doucet A, Jeunemaitre X, Hadchouel J (2012) A new methodology for quantification of alternatively spliced exons reveals a highly tissue-specific expression pattern of WNK1 isoforms. *PLoS One* 7: e37751
- Vidal-Petiot E, Elvira-Matlot E, Mutig K, Soukaseum C, Baudrie V, Wu S, Cheval L, Huc E, Cambillau M, Bachmann S et al (2013) WNK1-related Familial Hyperkalemic Hypertension results from an increased expression of L-WNK1 specifically in the distal nephron. *Proc Natl Acad Sci USA* 110: 14366–14371
- Vitari AC, Deak M, Morrice NA, Alessi DR (2005) The WNK1 and WNK4 protein kinases that are mutated in Gordon's hypertension syndrome, phosphorylate and activate SPAK and OSR1 protein kinases. *Biochem J* 391: 17–24
- Vitari AC, Thastrup J, Rafiqi FH, Deak M, Morrice NA, Karlsson HK, Alessi DR (2006) Functional interactions of the SPAK/OSR1 kinases with their upstream activator WNK1 and downstream substrate NKCC1. *Biochem J* 397: 223–231
- Wakabayashi M, Mori T, Isobe K, Sohara E, Susa K, Araki Y, Chiga M, Kikuchi E, Nomura N, Mori Y et al (2013) Impaired KLHL3-mediated ubiquitination of WNK4 causes human hypertension. *Cell Rep* 3: 858–868
- Wang MX, Cuevas CA, Su XT, Wu P, Gao ZX, Lin DH, McCormick JA, Yang CL, Wang WH, Ellison DH (2018) Potassium intake modulates the thiazide-sensitive sodium-chloride cotransporter (NCC) activity via the Kir4.1 potassium channel. *Kidney Int* 93: 893–902
- Weinstein AM (2005) A mathematical model of rat distal convoluted tubule. I. Cotransporter function in early DCT. *Am J Physiol Renal Physiol* 289: F699–720
- Wilson FH, Disse-Nicodeme S, Choate KA, Ishikawa K, Nelson-Williams C, Desitter I, Gunel M, Milford DV, Lipkin GW, Achard J-M et al (2001) Human hypertension caused by mutations in WNK kinases. *Science* 293: 1107–1112
- Wilson FH, Kahle KT, Sabath E, Lalioti MD, Rapson AK, Hoover RS, Hebert SC, Gamba G, Lifton RP (2003) Molecular pathogenesis of inherited hypertension with hyperkalemia: The Na-Cl cotransporter is inhibited by wild-type but not mutant WNK4. *Proc Natl Acad Sci USA* 100: 680–684
- Wolley MJ, Wu A, Xu S, Gordon RD, Fenton RA, Stowasser M (2017) In primary aldosteronism, mineralocorticoids influence exosomal sodium-chloride cotransporter abundance. *J Am Soc Nephrol* 28: 56–63
- Wu P, Gao ZX, Zhang DD, Su XT, Wang WH, Lin DH (2019) Deletion of Kir5.1 impairs renal ability to excrete potassium during increased dietary potassium intake. *J Am Soc Nephrol* 30: 1425–1438
- Xu B, English JM, Wilsbacher JL, Stippec S, Goldsmith EJ, Cobb MH (2000) WNK1, a novel mammalian serine/threonine protein kinase lacking the catalytic lysine in subdomain II. *J Biol Chem* 275: 16795–16801
- Yang CL, Angell J, Mitchell R, Ellison DH (2003) WNK kinases regulate thiazide-sensitive Na-Cl cotransport. *J Clin Invest* 111: 1039–1045
- Yang L, Xu Y, Gravotta D, Frindt G, Weinstein AM, Palmer LG (2021) ENaC and ROMK channels in the connecting tubule regulate renal K⁺ secretion. *J Gen Physiol* 153
- Yang SS, Fang YW, Tseng MH, Chu PY, Yu IS, Wu HC, Lin SW, Chau T, Uchida S, Sasaki S et al (2013) Phosphorylation regulates NCC stability and transporter activity in vivo. *J Am Soc Nephrol* 24: 1587–1597
- Yoshizaki Y, Mori Y, Tsuzaki Y, Mori T, Nomura N, Wakabayashi M, Takahashi D, Zeniya M, Kikuchi E, Araki Y et al (2015) Impaired degradation of WNK by Akt and PKA phosphorylation of KLHL3. *Biochem Biophys Res Commun* 467: 229–234
- Zhang C, Wang L, Zhang J, Su XT, Lin DH, Scholl UI, Giebisch G, Lifton RP, Wang WH (2014) KCNJ10 determines the expression of the apical Na-Cl cotransporter (NCC) in the early distal convoluted tubule (DCT1). *Proc Natl Acad Sci USA* 111: 11864–11869
- Zhang C, Wang Z, Xie J, Yan F, Wang W, Feng X, Zhang W, Chen N (2011) Identification of a novel WNK4 mutation in Chinese patients with pseudohypoaldosteronism type II. *Nephron Physiol* 118: 53–61



License: This is an open access article under the terms of the Creative Commons Attribution License, which permits use, distribution and reproduction in any medium, provided the original work is properly cited.