

CORRIGENDUM

In Zhao et al.,¹ the following error was published:

Figure 2C, which showed the cell morphology from different tooth development stages, and Figure 5 second row images which showed the Alizarin Red staining, were inadvertently repeated.

The corrected Figures 2 and 5 are shown below. The corrections do not influence the interpretation of the results and conclusions. We apologize for this oversight and any confusion caused.

FIGURE 2

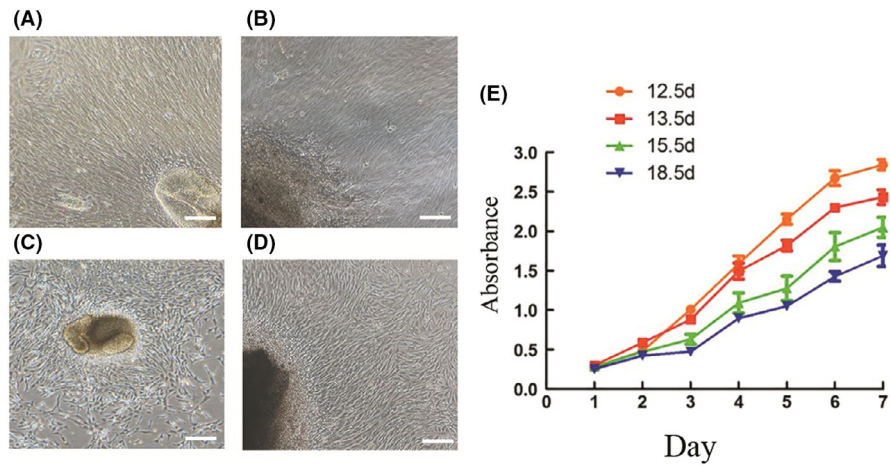
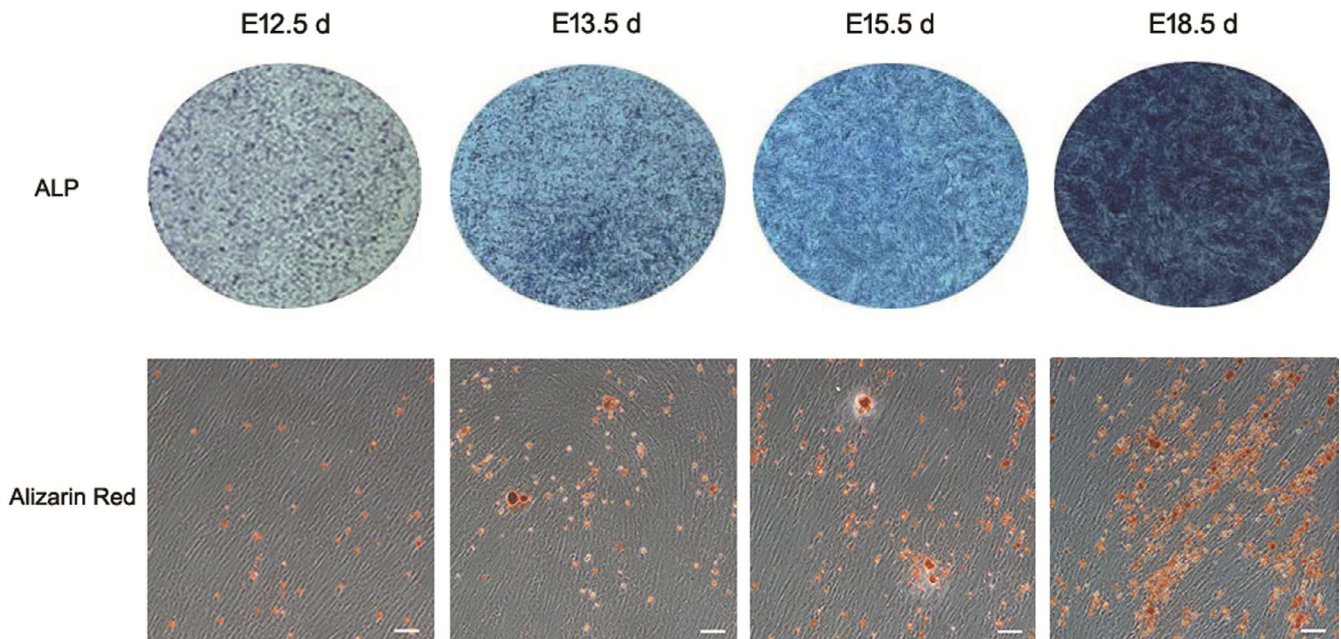


FIGURE 5



REFERENCE

1. Zhao M, Wen X, Li G, et al. The spatiotemporal expression and mineralization regulation of p75 neurotrophin receptor in the early tooth development. *Cell Prolif*. 2019;52(1):e12523. 10.1111/cpr.12523