

## RESEARCH ARTICLE

# Self-reported word-finding complaints are associated with cerebrospinal fluid amyloid beta and atrophy in cognitively normal older adults

Maxime Montembeault<sup>1,2,3</sup> | Stefan Stijelja<sup>2</sup> | Simona M. Brambati<sup>2,3</sup> | For the Alzheimer's Disease Neuroimaging Initiative<sup>1</sup>

<sup>1</sup> Department of Neurology, University of California San Francisco, Memory & Aging Center, San Francisco, California, USA

<sup>2</sup> Département de psychologie, Université de Montréal, Pavillon Marie-Victorin succursale Centre-ville, Montréal, Quebec, Canada

<sup>3</sup> Centre de Recherche de l'Institut Universitaire de Gériatrie de Montréal (CRIUGM), Montréal, Quebec, Canada

## Correspondence

Maxime Montembeault, University of California, San Francisco (UCSF), Memory and Aging Center, Box 1207, 675 Nelson Rising Lane, Suite 190, San Francisco, CA 94143, USA.  
E-mail: [maxime.montembeault@gmail.com](mailto:maxime.montembeault@gmail.com)

Data used in preparation of this article were obtained from the Alzheimer's Disease Neuroimaging Initiative (ADNI) database ([adni.loni.usc.edu](http://adni.loni.usc.edu)). As such, the investigators within the ADNI contributed to the design and implementation of ADNI and/or provided data but did not participate in analysis or writing of this report. A complete listing of ADNI investigators can be found at: [http://adni.loni.usc.edu/wpcontent/uploads/how\\_to\\_apply/ADNI\\_Acknowledgement\\_List.pdf](http://adni.loni.usc.edu/wpcontent/uploads/how_to_apply/ADNI_Acknowledgement_List.pdf)

## Funding information

National Institutes of Health, Grant/Award Number: U01 AG024904; Department of Defense award, Grant/Award Number: W81XWH-12-2-0012

## Abstract

**Introduction:** Self-reported word-finding difficulties are among the most frequent complaints in cognitively normal (CN) older adults. However, the clinical significance is still debated.

**Methods:** We selected 239 CN from the Alzheimer's Disease Neuroimaging Initiative database who had completed the Everyday Cognition (ECog) questionnaire, as well as a lumbar puncture for amyloid beta ( $A\beta$ ) and magnetic resonance imaging.

**Results:** Word-finding complaints, with a few other memory items, were significantly more severe compared to all other cognitive complaints. Ecog-Lang1 (Forgetting names of objects) severity significantly predicted  $A\beta$  levels in CN, even when controlling for general cognitive complaint, demographic, and psychological variables. Individuals with high Ecog-Lang1 complaints showed atrophy in the left fusiform gyrus and the left rolandic operculum compared to CN with low complaints.

**Discussion:** Overall, our results support the fact that word-finding complaints should be taken seriously. They have the potential to identify CN at risk of AD and support the need to include other cognitive domains in the investigation of subjective cognitive decline.

## KEYWORDS

aging, Alzheimer's disease, language, subjective cognitive decline, subjective complaints, word finding

## 1 | BACKGROUND

The amnesic form of Alzheimer's disease (AD), in which episodic memory disturbances are predominant, is the most common form of the disease.<sup>1</sup> Consequently, self-reported memory complaints among

older adults have received considerable attention in recent years as a possible early marker of the disease.<sup>2,3</sup> This interest spawns, in part, from the fact that AD has a long prodromal phase during which patients are either asymptomatic or have subtle cognitive complaints.<sup>4</sup> Interestingly, subjective memory complaints in cognitively normal (CN)

This is an open access article under the terms of the [Creative Commons Attribution-NonCommercial-NoDerivs](https://creativecommons.org/licenses/by-nc-nd/4.0/) License, which permits use and distribution in any medium, provided the original work is properly cited, the use is non-commercial and no modifications or adaptations are made.

© 2021 The Authors. *Alzheimer's & Dementia: Diagnosis, Assessment & Disease Monitoring* published by Wiley Periodicals, LLC on behalf of Alzheimer's Association

older individuals have been associated with the presence of amyloid<sup>2</sup> and brain atrophy.<sup>3</sup>

Apart from memory deficits, a decline related to language performance, and most specifically word-finding difficulties, is also considered to be a very early sign of AD.<sup>5-7</sup> Several studies have shown that language and more specifically word-finding complaints are among the most frequent complaints in CN older adults.<sup>8-10</sup> In daily life, these word-finding complaints can manifest in different ways, such as forgetting the names of objects or people and having difficulties finding words in conversations. Even if the prevalence of word-finding complaints in healthy aging is elevated, the clinical significance of self-reported word-finding difficulties is still undetermined. General language complaints, which combine expressive (word-finding but other functions such as the ability to communicate thoughts efficiently, for example) and receptive (comprehending language) abilities, have been investigated with conflicting results. On one hand, some studies suggest that language complaints might not be the most relevant predictors of dementia: they might not be associated with AD pathology (amyloid beta [A $\beta$ ] and tau positron emission tomography [PET])<sup>11</sup> or enhanced risk of converting to mild cognitive impairment (MCI).<sup>12</sup> On the other hand, a conflicting literature shows that higher language complaints are in fact associated with cerebrospinal fluid (CSF) A $\beta$ .<sup>13-15</sup> In the only study investigating word-finding complaints specifically, Condret-Santi et al. found that subjective language complaints did not predict conversion to dementia in CN older adults.<sup>8</sup>

No studies have investigated whether subjective word-finding complaints, specifically, can be considered an early indication of AD-related neuropathological and brain changes. In previous studies, subjective word-finding complaints assessment has been somewhat limited by considering language as a unitary domain or using a single yes–no question. Also, sociodemographic and/or psychological factors might have an impact on self-reported cognitive complaints. For instance, cognitive complaints were found to be correlated with sex and advanced age; women and older individuals display a higher prevalence of subjective cognitive complaints.<sup>16</sup> Language complaints, more specifically, have been related to depressive and anxiety-related symptoms.<sup>10,17</sup> Consequently, determining if word-finding difficulties are truly related to predictors of dementia might require accounting for these factors.

The present study aims at: (1) characterizing the frequency and severity of word-finding complaints in CN older adults compared to other language and cognitive domains, (2) identifying sociodemographic and psychological characteristics associated with word-finding complaints in CN, (3) determining if word-finding complaints can predict CSF A $\beta$  levels, and (4) comparing gray matter (GM) volume in CN with varying levels of word-finding complaints. Based on the literature, we posit that (1) word-finding difficulties will be among the most frequent and severe cognitive complaints among CN; (2) age, sex, education, depression, and anxiety will correlate with more severe word-finding complaints; (3) subjective word-finding complaints will predict pathological levels of CSF A $\beta$  (even controlling for sociodemographic and psychological variables); and (4) CN with significant word-finding complaints will present GM atrophy in brain regions that are associated with naming abilities and that are usually damaged in AD patients.

## RESEARCH IN CONTEXT

1. Systematic review: We reviewed the literature using traditional sources (e.g., PubMed). While the prevalence of word-finding complaints in healthy aging is elevated, outcomes regarding the clinical significance of these difficulties are conflictual.
2. Interpretation: Our findings suggest that word-finding complaints are among the most severe in healthy aging. They are associated with lower cerebrospinal fluid amyloid beta levels and atrophy in the left fusiform gyrus and the left rolandic operculum, which highlights their clinical importance.
3. Future directions: To further establish the impact of word-finding complaints in healthy aging, future longitudinal studies should investigate the relationship between continuous word finding complaints and conversion to mild cognitive impairment or dementia. Furthermore, word-finding complaints should not be neglected in studies of cognitive complaints or subjective cognitive decline.

## 2 | METHODS

Data used in the preparation of this article were obtained from the Alzheimer's Disease Neuroimaging Initiative (ADNI) database ([adni.loni.usc.edu](http://adni.loni.usc.edu)). The ADNI was launched in 2003 as a public–private partnership, led by Principal Investigator Michael W. Weiner, MD. The primary goal of ADNI has been to test whether serial magnetic resonance imaging (MRI), PET, other biological markers, and clinical and neuropsychological assessment can be combined to measure the progression of MCI and early AD. For up-to-date information, see [www.adni-info.org](http://www.adni-info.org).

### 2.1 | Participants

In the general ADNI inclusion criteria, subjects are deemed CN if they present: (1) a Mini-Mental State Examination (MMSE) scores between 24 and 30; (2) a Clinical Dementia Rating (CDR) score of 0; (3) above education-adjusted scores on the delayed Paragraph Recall task from the Wechsler Memory Scale Logical Memory II; (4) no significant impairment in cognitive functions or activities of daily living.

Study-specific inclusion criteria include (1) having available self-rated Everyday Cognition (ECog) questionnaire; and (2) CSF AD biomarkers. Written informed consent was obtained from all participants.

### 2.2 | Clinical assessment

The severity and frequency of word-finding difficulties were assessed using the self-reported ECog questionnaire. The ECog<sup>18</sup> is a val-

idated 39 item-scale probing an individual's subjective complaints through six cognitive dimensions: memory (eight items), language (nine items), visuospatial (seven items), planning (five items), organization (six items), and divided attention (four items). Responses range from 1 to 4 (1 = no change or actually performs better than 10 years ago; 2 = occasionally performs the task worse than 10 years ago but not all of the time; 3 = consistently performs the task a little worse than 10 years ago; 4 = performs the task much worse than 10 years ago). Within the language dimension, two items are related to word-finding difficulties, namely Ecog-Lang1 ("Forgetting the names of objects") and Ecog-Lang3 ("Finding the right words to use in a conversation"). These two items represent our main variables of interest.

Individuals enrolled in ADNI were also required to perform a plethora of clinical tests. The present study particularly considers two of them: Geriatric Depression Scale (GDS<sup>19</sup>) to assess depression-related symptoms, and Neuropsychiatric Inventory Examination<sup>20</sup> to assess anxiety-related symptoms (anxiety item).

## 2.3 | Biomarkers collection

A $\beta$  concentration was considered the main biological proxy for probable AD dementia. The complete descriptions of the collection, transportation, and analyses protocols are provided in the ADNI procedural manual at [www.adni-info.org](http://www.adni-info.org).

## 2.4 | MRI acquisition and preprocessing

All subjects underwent the standardized MRI protocol of ADNI as described at <http://www.loni.ucla.edu/ADNI/Research/Cores/index.shtml>.

Image pre-processing was performed using CAT12 (<http://www.neuro.uni-jena.de/cat/>), which is an extension of SPM12 (Statistical Parametric Mapping 12, <http://www.fil.ion.ucl.ac.uk/spm/software/spm12/>), running on MATLAB (Mathworks). All T1-weighted images were corrected for bias (field inhomogeneities and noise). They were then segmented into GM, white matter, and CSF,<sup>21</sup> and spatially normalized and modulated. After preprocessing, all scans passed a visual check for artefacts and the automated CAT12 quality check protocol. The modulated and normalized GM images were then smoothed with a Gaussian kernel of 8 mm full width half-maximum.

## 2.5 | Statistical analyses

All statistical analyses were performed using IBM SPSS Statistics 26 and R version 3.6. First, to compare the severity of Ecog-Lang1 and Ecog-Lang3 to the severity of all other cognitive complaints, a one-way repeated measures analysis of variance (ANOVA) with custom contrasts was carried. A Bonferroni-corrected statistical threshold of  $P \leq .00066$  was used for the 76 comparisons. Second, to iden-

**TABLE 1** Demographic and psychological characteristics of the sample

	CN older adults Mean $\pm$ SD	Range
N	239	-
Male/Female (%)	47.3/52.7	-
Age	73.1 $\pm$ 6.1	56.0–89.0
Years of education	16.7 $\pm$ 2.5	8.0–20.0
CSF amyloid beta (pg/mL)	197.5 $\pm$ 50.1	82.7–303.0
ECog total score	54.5 $\pm$ 13.0	39.0–102.0
Geriatric Depression Scale (GDS)	0.8 $\pm$ 1.1	.0–6.0
Anxiety item (Neuropsychiatric Inventory Examination)	0.1 $\pm$ 0.7	.0–8.0
Mini-Mental State Examination (MMSE)	29.1 $\pm$ 1.2	24.0–30.0

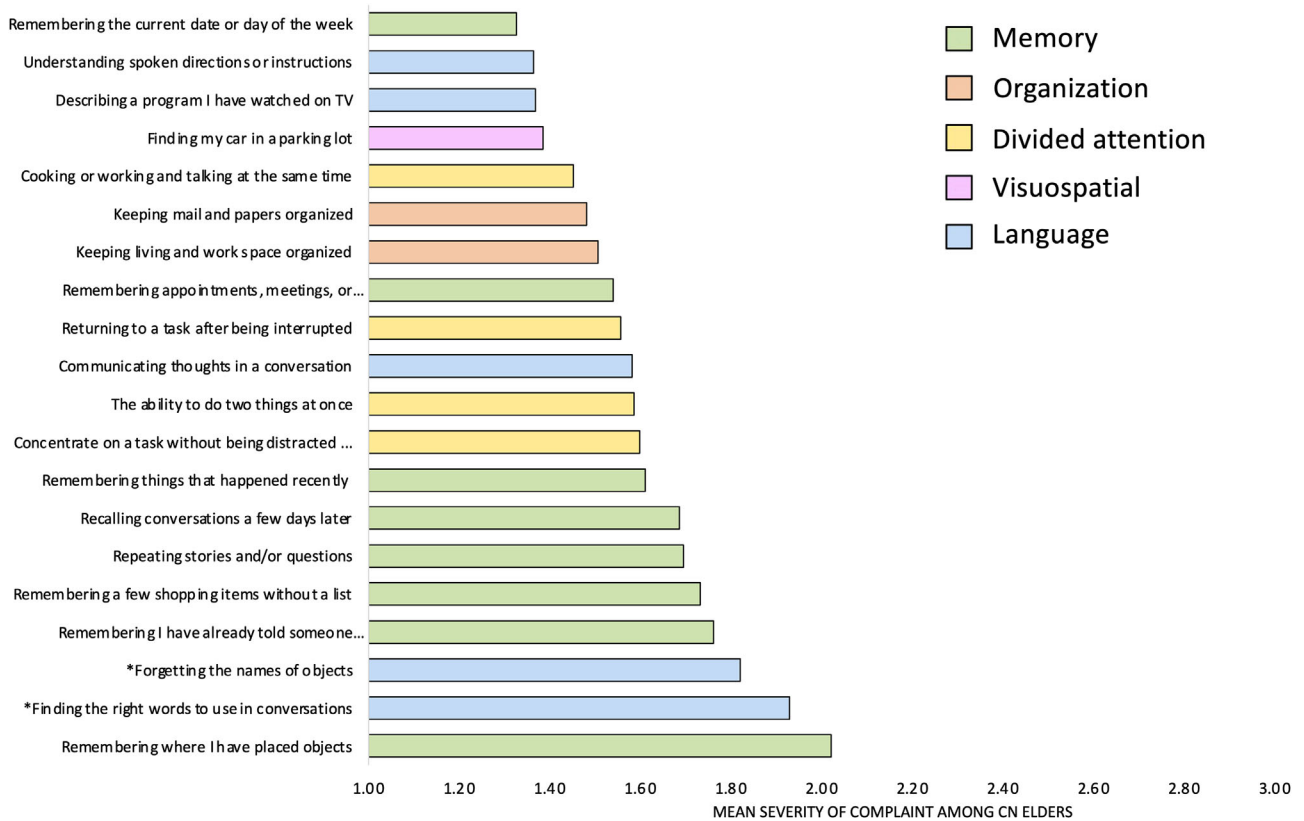
Abbreviations: CN, cognitively normal; CSF, cerebrospinal fluid; ECog, Everyday Cognition questionnaire; SD, standard deviation.

tify demographic and psychological correlates of word-finding complaints in CN, Spearman rank correlations were used to establish the degree of association between word-finding complaint items (as ordinal variables) and selected demographic (age, sex, education) and psychological (depression-related symptoms, anxiety-related symptoms) variables. Third, we aimed to determine whether word-finding complaints can predict CSF A $\beta$  levels. One-way ANOVA tests were performed to determine whether statistically significant differences were observable in CSF A $\beta$  concentration between CN in each word-finding complaint's levels. Multiple regression models were also fitted to analyze the ability of word-finding complaints to predict CSF A $\beta$  levels accounting for other covariates (demographic and psychological factors). Fourth, we aimed to compare GM volume in CN with varying levels of word-finding complaints. The voxel-based morphometry analysis was performed on smoothed GM images. Two one-way ANOVAs were performed to compare groups of CN according to their level of word-finding complaints (one for Ecog-Lang1 and one for Ecog-Lang3). Contrasts were set to compare GM volume among three groups: CN with no word-finding complaint, CN with occasional word-finding complaint, and CN reporting consistent or much worse word-finding difficulties. Age, sex, handedness, total intracranial volume, and scanner were included as nuisance covariates. Whole-brain statistical analyses were conducted at a statistical threshold of  $P < .05$  family-wise error (FWE), corrected for multiple comparisons was used.

## 3 | RESULTS

### 3.1 | Description of participants

In total, 239 CN were included in the present study (Table 1). The sample was 47.3% male and 52.7% female; mean age was 73.1 years. Participants were highly educated (16.7 years of education on average). CN



**FIGURE 1** Levels of severity of cognitive complaints among cognitively normal older adults (20 top items out of the 39 Everyday Cognition questionnaire items)

were cognitively unimpaired at baseline (average MMSE of 29.1). Over a follow-up period of 2 years, 219 participants remained cognitively unimpaired, 17 participants converted to amnesic MCI, and 3 participants converted to amnesic AD.

### 3.2 | Severity and frequency of word-finding complaints in CN

Figure 1 presents the most severe cognitive complaints among our sample of 239 CN. Comparing the severity level of Ecog-Lang1 (“Forgetting the names of objects”) to all the other cognitive complaints, we found that it was equivalent to four other memory complaints (“Remembering a few shopping items without a list,” “Recalling conversations a few days later,” “Repeating stories and or questions,” “Remembering I have already told someone something”), but significantly higher than all other cognitive complaints ( $P \leq .00066$  Bonferroni-corrected). Ecog-Lang3 (“Finding the right words to use in a conversation”) was also significantly higher than most of the other cognitive complaints ( $P \leq .00066$  Bonferroni-corrected) and equivalent to three other memory complaints (“Remembering a few shopping items without a list,” “Remembering where I have placed objects,” “Remembering I have already told someone something”). Conversely, no other cognitive complaint was significantly higher than the two word-finding complaints.

In terms of frequency of word-finding complaints, while most CN report no change (36.0%) or being occasionally worse (47.2%) at forgetting the names of objects (Ecog-Lang1), 15.5% report being consistently a little worse and 1.3% report being consistently much worse. In terms of finding the right words to use in conversation (Ecog-Lang3), 31.0% report no change, 50.6% report being occasionally worse, 13.0% report being consistently a little worse, and 5.4% report being consistently much worse. The distribution of responses per level of complaint for all the ECog items is presented in Table S1. The most frequent subjective complaints across the 39 items of the ECog, considering the percent of CN who scored either 3 or 4, were the word-finding complaints (16%, 18%) as well as on two memory-related items (“Remembering a few shopping items without a list”: 18%; “Remembering where I have placed objects”: 26%). Due to low response rates for the fourth complaint level (4 = performs the task much worse than 10 years ago), the third and fourth response options were merged for all other analyses.

### 3.3 | Demographic and psychological correlates of word-finding complaints in CN

Results for the Spearman rank correlations are presented in Table 2. Ecog-Lang1 was not significantly related with any demographic (age, sex, years of education) or psychological variable (depression-related symptoms, anxiety-related symptoms). Ecog-Lang3 was

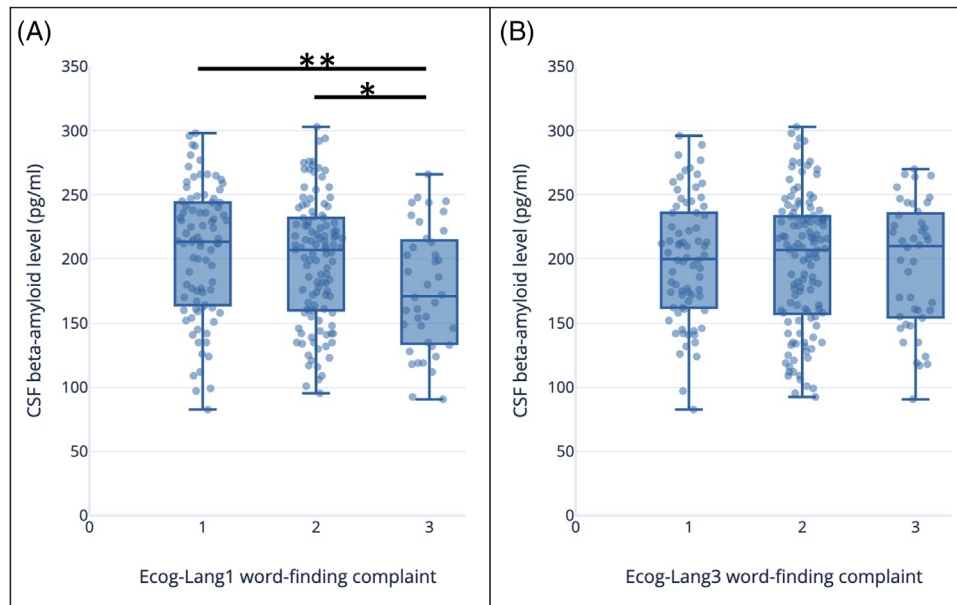
**TABLE 2** Spearman's rank correlations between word-finding complaints and demographic/psychological variables

	Sex	Age	Years of schooling	Geriatric Depression Scale (GDS)	Anxiety item (NPI)
Forgetting the names of objects (Ecog-Lang1)	-0.008	0.106	-0.037	0.12	0.066
Finding the right words to use in conversations (Ecog-Lang3)	0.063	-0.031	-.154 <sup>b</sup>	.274 <sup>a</sup>	0.068

<sup>a</sup>Correlation is significant at the 0.01 level (2-tailed).

<sup>b</sup>Correlation is significant at the 0.05 level (2-tailed).

Abbreviations: ECog, Everyday Cognition questionnaire; NPI, Neuropsychiatric Inventory.



**FIGURE 2** Amyloid beta levels (pg/mL) according to severity of (A) Ecog-Lang1 complaints (Forgetting the names of objects) (B) Ecog-Lang3 complaints (Finding the right words to use in conversations). The values represent: 1 = no change or actually performs better than 10 years ago; 2 = occasionally performs the task worse than 10 years ago but not all of the time; 3 = consistently performs the task a little worse than 10 years ago or performs the task much worse than 10 years ago. CSF, cerebrospinal fluid; ECog, Everyday Cognition questionnaire

significantly negatively associated with years of education ( $\rho = -.154$ ;  $P \leq .001$ ) and positively associated with depression-related symptoms ( $\rho = .274$ ;  $P \leq .001$ ). There was a significant but moderate positive correlation between Ecog-Lang1 and Ecog-Lang3 ( $\rho = 0.468$ ;  $P \leq .001$ ), which suggests that although they are related to some degree, they also capture different facets of word-finding complaints. Ecog-Lang1 and Ecog-Lang3 were therefore considered separately for the remaining analyses.

### 3.4 | CSF A $\beta$ levels according to word-finding complaints severity levels

A statistically significant difference in CSF A $\beta$  was found depending on the complaint severity of Ecog-Lang1 ( $F[2,236] = 5.044$ ,  $P = .007$ ; Figure 2A). The mean CSF A $\beta$  level was  $206.1 \pm 50.9$  for CN with no Ecog-Lang1 word-finding complaint,  $198.6 \pm 48.6$  with occasional Ecog-Lang1 complaint, and  $176.3 \pm 47.7$  for CN who reported consistent or much worst Ecog-Lang1 complaint. The post hoc test showed

that the CN who reported having consistently or much more difficulty remembering the names of objects (severity levels 3 and 4 combined) had significantly lower levels of CSF A $\beta$  compared to the first ( $P = .005$ ) and second level of complaint ( $P = .039$ ).

Considering the second Ecog-Lang3, CSF A $\beta$  levels did not differ significantly depending on the severity levels of the complaint ( $P = .903$ ; Figure 2B).

### 3.5 | Relation between word-finding complaints and CSF A $\beta$ levels controlling for demographic and psychological factors

The results of our univariate analyses showed that the subjective complaint Ecog-Lang1 is related to CSF A $\beta$  levels in CN. To increase confidence in these findings, we extended our previous analyses by including relevant control variables. Table 3 presents results of multiple regression models in which CSF A $\beta$  concentration is the dependent variable. The first model only included the predictor of interest



**TABLE 3** Regression analysis of predictors of CSF A $\beta$  levels (Ecog-Lang1 as the main IV)

	Model 1	Model 2	Model 3
Ecog-Lang 1(1/3)	Ref	Ref	Ref
Ecog-Lang 1(2/3)	-7.501 (7.052)	-8.048 (7.301)	-5.106 (7.184)
Ecog-Lang 1(3/3)	-29.816** (9.431)	-31.555** (11.106)	-26.906* (10.902)
ECog total score (without Lang1//Lang3)		.093 (.312)	-.013 (.318)
Sex			-15.885* (6.606)
Age			-1.652** (.526)
Years of education			2.022 (1.311)
Geriatric Depression Scale (GDS)			2.191 (2.927)
Anxiety score			-4.037 (4.509)
Constant	206.071*** (5.314)	201.899*** (14.978)	315.152*** (50.761)

Note: Standard errors in parentheses.

\* $P < .05$

\*\* $P < .01$

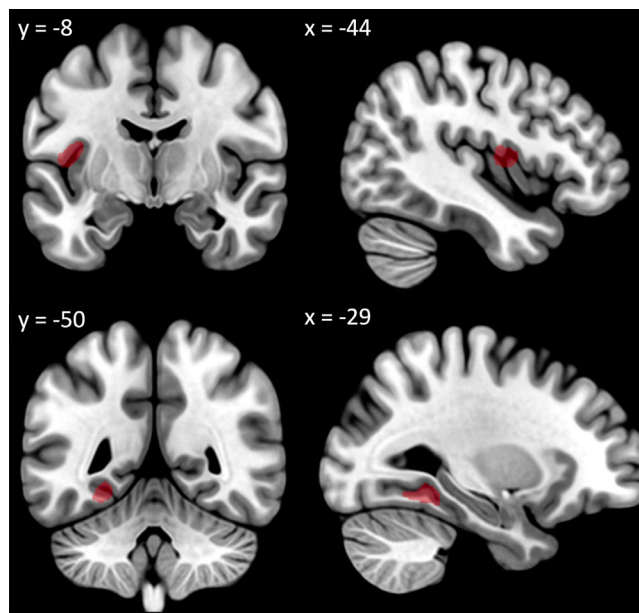
\*\*\* $P < .001$ .

Abbreviations: A $\beta$ , amyloid beta; CSF, cerebrospinal fluid; ECog, Everyday Cognition questionnaire; IV, instrumental variable.

(Ecog-Lang1), entered as a categorical variable. The second model was comprised of the total score on the ECog (without Ecog-Lang1 and Ecog-Lang3), to assess if word-finding complaints are specifically associated with AD biomarkers, controlling for the overall degree of subjective cognitive complaints. Finally, a third model was fitted to control for demographic and psychological variables (sex, age, years of education, depression-related symptoms, and anxiety-related symptoms). When all these covariates were included in the model, the most severe level of complaint predicted a statistically significant decrease of 26.906 pg/mL in CSF A $\beta$  concentrations. Interestingly, total score on the ECog (without items Ecog-Lang1 and Ecog-Lang3) did not significantly predict CSF A $\beta$  levels ( $B = -0.025$ ;  $P = .936$ ).

### 3.6 | Comparison of GM atrophy between individuals with varying levels of word-finding complaints

Considering Ecog-Lang1, CN reporting consistent or much worse word-finding difficulties had significant GM atrophy in the left fusiform



**FIGURE 3** Decreased gray matter volume in participants with significant Ecog-Lang1 word-finding complaint (Forgetting the names of objects) versus participants with no Ecog-Lang1 word-finding complaint (significant at  $P < .05$  family-wise error corrected controlling for age, sex, handedness, scanner, total intracranial volume, presented at  $P < .001$  uncorrected for display). ECog, Everyday Cognition questionnaire

gyrus ( $x = -29$ ,  $y = -50$ ,  $z = -12$ ) and the left rolandic operculum ( $x = -44$ ,  $y = -8$ ,  $z = 11$ ) compared to CN without word-finding complaints ( $P < .05$  FWE; Figure 3). The reverse contrast did not show any significant difference. CN with occasional word-finding complaints did not significantly differ from either of the other groups. Whole-brain GM volume did not differ between the three groups (GM volume in for Ecog-Lang 1 “No change (1)” = 563.4 mm<sup>3</sup>; “Occasionally worse (2)” = 554.3 mm<sup>3</sup>; “Consistently a little worse or much worse (3)” = 555.8 mm<sup>3</sup>;  $F[2, 232] = 0.845$ ,  $P = .431$ ).

Considering Ecog-Lang3, GM volume did not differ significantly between groups with different levels of complaint.

### 3.7 | Post hoc analyses separating A $\beta$ - and A $\beta$ + CN

Given the observed relationship between Ecog-Lang1 and CSF A $\beta$  (Sections 3.4 and 3.5), we wanted to determine whether our results were dependent on the A $\beta$  status of the participants. Therefore, we divided our CN sample between A $\beta$  negative (A $\beta$ -) and A $\beta$  positive (A $\beta$ +) based on a CSF A $\beta$  cut-off that was previously established in the ADNI sample (A $\beta$ + if inferior or equal to 192pg/mL).<sup>22</sup> Based on this criterion, 136 participants were A $\beta$ - and 103 participants were A $\beta$ +

We first ran Spearman rank correlations to establish the demographic and psychological correlates of word-finding complaints in each group. In A $\beta$ - CN, in addition to replicating the finding that Ecog-Lang3 was significantly negatively associated with years of education

( $rho = -.239$ ;  $P = .005$ ), and positively associated with depression-related symptoms ( $rho = .376$ ;  $P = .001$ ), we found that Ecog-Lang1 was also positively associated with depression-related symptoms ( $rho = .211$ ;  $P = .014$ ). In  $A\beta+$  CN, no significant correlation was found.

We then ran two neuroimaging analyses to compare GM volumes between (1)  $A\beta-$  CN according to their Ecog-Lang1 severity levels and (2)  $A\beta+$  CN according to their Ecog-Lang1 severity levels. These two analyses did not reveal any significant region using a similar threshold ( $P < .05$  FWE), most likely due to lower statistical power. Nonetheless, using an uncorrected threshold ( $P < .001$  uncorrected), similar results were observed in both groups ( $A\beta-$  CN and  $A\beta+$  CN): CN reporting consistent or much worse word-finding difficulties presented lower GM volumes in the left fusiform gyrus and the left rolandic operculum, compared to CN without word-finding complaint.

## 4 | DISCUSSION

In this study, we demonstrated that word-finding complaints are among the most frequent and severe in CN. In this population, forgetting the name of objects was relatively independent of main sociodemographic or psychological characteristics. Furthermore, forgetting the name of objects significantly predicted lower levels of CSF  $A\beta$ , even when controlling for sociodemographic variables, psychological measures, and total cognitive complaints. Finally, CN who report consistently forgetting the names of objects show GM atrophy in the left fusiform gyrus and left rolandic operculum, compared to CN who don't report this phenomenon or who only report it occasionally. Our results highlight the importance of word-finding complaints for the early screening of older adults at higher risk of developing AD.

### 4.1 | Word-finding complaints are among the most frequent and severe in CN

Our results show that word-finding complaints were as severe and frequent as other episodic memory complaints, and significantly more severe and frequent than all the other cognitive complaints (from the organization, divided attention, and visuospatial domains). Approximately 50% of CN report occasional word-finding difficulties and 15% to 18% report consistent word-finding difficulties. These results suggest that CN are highly sensitive to word-finding changes, possibly due to the frequent use of language in daily life and the potential impacts of word-finding problems on social life. They are consistent with previous studies showing the elevated prevalence of such complaints.<sup>8-10</sup> The current study adds to this literature by directly comparing word-finding complaints with complaints from other cognitive domains, therefore providing a complete profile of cognitive complaints in CN. Finally, word-finding complaints were significantly more severe than other types of language complaints, which highlight the importance of investigating word-finding complaints in isolation in CN. Otherwise, language complaints in CN would most likely be underestimated.

### 4.2 | Forgetting the name of objects is relatively independent of sociodemographic or psychological characteristics in CN

We were also interested in understanding if there are sociodemographic and/or psychological profiles that are associated with elders who are more likely to report experiencing word-finding difficulties. Our results suggest that age and sex are not related to word-finding complaints, contrary to previous studies suggesting that women and older individuals displayed higher prevalence of global subjective cognitive complaints.<sup>16</sup> For the remaining characteristics, we obtained different associations depending on the word-finding complaint investigated (Ecog-Lang1 or Ecog-Lang3) and the  $A\beta$  status ( $A\beta+$  and  $A\beta-$ ). Ecog-Lang1 was not related to education, depression-, or anxiety-related symptoms in  $A\beta+$ , but was related to depression-related symptoms in  $A\beta-$  CN. Ecog-Lang3 was modestly correlated with education (only in  $A\beta-$  CN) and depression-related symptoms, but not with anxiety-related symptoms. Overall, this suggests that in  $A\beta+$  CN, word-finding complaints cannot be attributed to external factors such as demographic factors or psychological symptoms, and are therefore most likely related to the  $A\beta$  status. In  $A\beta-$  CN, word-finding complaints might be less specific and more multifactorial. Our results also suggest that Ecog-Lang1 is more independent from demographic and psychological factors than Ecog-Lang3. Previous studies have also showed an association of subjective language complaints with psychological symptoms, although these studies did not consider  $A\beta$  status.<sup>10,17</sup>

### 4.3 | Word-finding complaints can help identify individuals with signs of AD pathology

Our study suggests that these complaints could serve to identify individuals presenting signs of AD pathology and who are at higher risk to develop AD dementia, before they show any objective signs of cognitive decline. In CN, greater self-reported difficulties to find the name of objects significantly predicted lower levels of CSF  $A\beta$ . Individuals with greater word-finding complaints also presented lower GM volumes in the left fusiform gyrus and the left rolandic operculum. Together, these results suggest that word-finding complaints reported by CN can be the expression of early signs of AD pathology. This was specifically true for Ecog-Lang1, and not Ecog-Lang3. This can inform clinicians and researchers on the best way to interrogate patients about their word-finding difficulties: forgetting the names of objects appears very specific and is associated with AD biomarkers and brain atrophy, versus finding the right words to use in conversations, which might be more multifactorial and is not predictive of such indicators.

Our results confirm that these complaints are worrying in older adults. Interestingly, CN who reported consistent or much worse Ecog-Lang1 complaints presented, on average, a level of CSF  $A\beta$  that is below the established cutoff of  $\leq 192$  pg/mL (percentage of participants who are below that threshold in each Ecog-Lang1 complaint level "No change (1)" = 37.2%; "Occasionally worse (2)" = 41.6%; "Consistently a little worse or much worse (3)" = 60%).<sup>22</sup> This is consistent with

previous studies reporting an association between general language complaints and CSF A $\beta$  in CN,<sup>13-15</sup> further showing the relevance of word-finding complaints specifically. Even though Condret-Santi et al.<sup>8</sup> found no increased risk of dementia in CN with word-finding complaints, they only assessed word-finding complaints using a yes or no question. By investigating word-finding complaints using a continuous scale, we show that occasional word-finding difficulties is not associated with AD biomarkers or atrophy, while consistent word-finding difficulties is.

Our study is also the first to show that individuals with greater word-finding complaints present more brain atrophy compared to those with no or lower word-finding complaints. This result was observed in the left fusiform gyrus and the left rolandic operculum, both regions implicated in language functions.<sup>23-26</sup> Our post hoc analyses showed that this effect was not driven by either A $\beta$ - CN and A $\beta$ + CN. Interestingly, the left fusiform gyrus is atrophied<sup>27</sup> and is implicated in naming<sup>23-25</sup> and semantic<sup>28</sup> impairments in AD patients. Interestingly, Pravatà et al.<sup>23</sup> found that one year before an AD diagnosis, MCI patients with naming difficulties showed greater GM loss in the left fusiform gyrus than MCI patients without naming difficulties. Our study suggests that these brain changes could happen even earlier, at a stage when individuals don't present any objective cognitive impairment yet.

#### 4.4 | Word-finding complaints should be taken seriously and considered with other cognitive complaints in the screening of prodromal AD

Cognitive complaints are at the core of the diagnosis of subjective cognitive decline (SCD) and MCI.<sup>4,29</sup> Although these diagnostic criteria consider complaints from any cognitive domains, a majority of studies on these populations have focused on episodic memory complaints.<sup>4</sup> It has been reported that most SCD clinical tools focus on memory.<sup>30</sup> More precisely, when considering all SCD assessment tools, 59% of items are related to memory while only 8% are related to language.<sup>30</sup> Although our study was not specifically designed to investigate SCD, it suggests that word-finding complaints are central in older adults. For this reason, word-finding complaints should be considered in the definition and screening of individuals with SCD.

#### 4.5 | Limitations and future studies

First, the correlations between psychological symptoms and word-finding complaints could be affected by the fact that severe depression-related symptoms are an exclusion criterion for the ADNI cohort. Furthermore, anxiety-related symptoms were not measured extensively (only with one item of the Neuropsychiatric Inventory). Thus, future studies should investigate word-finding complaints in a more representative sample and with a more detailed anxiety questionnaire.

Second, the number of CN who eventually converted to amnesic MCI or AD was too limited to allow statistical analyses on this variable. Future longitudinal studies with larger sample size and longer follow-

ups should investigate the relationship between continuous word-finding complaints and conversion to MCI or dementia in CN.

Finally, recent studies have shown that findings from clinic-based cohorts (such as the ADNI cohort) may not generalize to the community. In fact, recent studies comparing the ADNI cohort to community-based samples have shown that the associations among risk factors, biomarkers, and neuroimaging outcomes can differ in these two types of samples.<sup>31,32</sup> This might be due to the fact that ADNI participants are on average more likely to be male, highly educated, apolipoprotein  $\epsilon$ 4 positive and less cognitively impaired.<sup>32</sup> Therefore, the results from our study should be confirmed in a community-based sample.

## 5 | CONCLUSION

Contrary to previous studies suggesting that word-finding complaints are not worrying in older adults, our study suggests that these complaints should be taken seriously. This study highlights the importance of investigating word-finding subjective complaints in CN for the screening of AD, on top of other consistently investigated complaints such as memory-related complaints. This investigation should be at least specific to forgetting the names of objects and conducted using a continuous scale. Our results also advocate for the inclusion of word-finding complaints in the investigation of SCD.

### ACKNOWLEDGMENTS

MM is supported by postdoctoral funding from Fonds de Recherche en Santé du Québec (FRQS) and Canadian Health Institutes of Research (CIHR). SS has no funding to report. SMB is supported by research funding from Fonds de Recherche en Santé du Québec (FRQS), Heart and Stroke Foundation of Canada, Canadian Institutes for Health Research (CIHR), and Alzheimer Society of Canada. Data collection and sharing for this project was funded by the Alzheimer's Disease Neuroimaging Initiative (ADNI) (National Institutes of Health Grant U01 AG024904) and DOD ADNI (Department of Defense award number W81XWH-12-2-0012). ADNI is funded by the National Institute on Aging, the National Institute of Biomedical Imaging and Bioengineering, and through generous contributions from the following: AbbVie; Alzheimer's Association; Alzheimer's Drug Discovery Foundation; Araclon Biotech; BioClinica, Inc.; Biogen; Bristol-Myers Squibb Company; CereSpir, Inc.; Cogstate; Eisai Inc.; Elan Pharmaceuticals, Inc.; Eli Lilly and Company; EuroImmun; F. Hoffmann-La Roche Ltd and its affiliated company Genentech, Inc.; Fujirebio; GE Healthcare; IXICO Ltd.; Janssen Alzheimer Immunotherapy Research & Development, LLC; Johnson & Johnson Pharmaceutical Research & Development LLC; Lumosity; Lundbeck; Merck & Co., Inc.; Meso Scale Diagnostics, LLC; NeuroRx Research; Neurotrack Technologies; Novartis Pharmaceuticals Corporation; Pfizer Inc.; Piramal Imaging; Servier; Takeda Pharmaceutical Company; and Transition Therapeutics. The Canadian Institutes of Health Research is providing funds to support ADNI clinical sites in Canada. Private sector contributions are facilitated by the Foundation for the National Institutes of Health ([www.fnih.org](http://www.fnih.org)). The grantee organization is the Northern California Institute for Research and Education, and the study is coordinated by the Alzheimer's



Therapeutic Research Institute at the University of Southern California. ADNI data are disseminated by the Laboratory for Neuro Imaging at the University of Southern California.

## CONFLICTS OF INTEREST

MM and SS have no conflicts of interest to report. In the past 36 months, SMB has received payment from Université de Montréal for presentations.

## REFERENCES

- McKhann GM, Knopman DS, Chertkow H, et al. The diagnosis of dementia due to Alzheimer's disease: recommendations from the National Institute on Aging-Alzheimer's Association workgroups on diagnostic guidelines for Alzheimer's disease. *Alzheimers Dement*. 2011;7:263-269.
- Amariglio RE, Buckley RF, Mormino EC, et al. Amyloid-associated increases in longitudinal report of subjective cognitive complaints. *Alzheimers Dement (N Y)*. 2018;4:444-449.
- Peter J, Scheef L, Abdulkadir A, et al. Gray matter atrophy pattern in elderly with subjective memory impairment. *Alzheimer's Dement*. 2014;10:99-108.
- Jessen F, Amariglio RE, van Boxtel M, et al. A conceptual framework for research on subjective cognitive decline in preclinical Alzheimer's disease. *Alzheimer's Dement: J Alzheimer's Assoc*. 2014;10:844-852.
- Taler V, Phillips NA. Language performance in Alzheimer's disease and mild cognitive impairment: a comparative review. *J Clin Exp Neuropsychol*. 2008;30:501-556.
- Montembeault M, Brambati SM, Joubert S, et al. Naming unique entities in the semantic variant of primary progressive aphasia and Alzheimer's disease: towards a better understanding of the semantic impairment. *Neuropsychologia*. 2017;95:11-20.
- Slegers A, Filiou RP, Montembeault M, Brambati SM. Connected speech features from picture description in Alzheimer's disease: a systematic review. *J Alzheimer's Dis: JAD*. 2018;65:519-542.
- Condret-Santi V, Barbeau EJ, Matharan F, Le Goff M, Dartigues JF, Amieva H. Prevalence of word retrieval complaint and prediction of dementia in a population-based study of elderly subjects. *Dement Geriatr Cogn Disord*. 2013;35:313-324.
- Kim BS, Lee MS, Kim H. Subjective language complaints: are they reflected in objective language test performance?. *Commun Sci Disord*. 2015;20:214-221.
- Martins IP, Mares I, Stilwell PA. How subjective are subjective language complaints. *Eur J Neurol*. 2012;19:666-671.
- Shokouhi S, Conley AC, Baker SL, et al. The relationship between domain-specific subjective cognitive decline and Alzheimer's pathology in normal elderly adults. *Neurobiol Aging*. 2019;81:22-29.
- Farias ST, Lau K, Harvey D, Denny KG, Barba C, Mefford AN. Early functional limitations in cognitively normal older adults predict diagnostic conversion to mild cognitive impairment. *J Am Geriatr Soc*. 2017;65:1152-1158.
- La Joie R, Perrotin A, Egret S, et al. Qualitative and quantitative assessment of self-reported cognitive difficulties in nondemented elders: association with medical help seeking, cognitive deficits, and  $\beta$ -amyloid imaging. *Alzheimer's Dement (Amsterdam, Netherlands)*. 2016;5:23-34.
- Miebach L, Wolfsgruber S, Polcher A, et al. Which features of subjective cognitive decline are related to amyloid pathology? Findings from the DELCODE study. *Alzheimer's Res Ther*. 2019;11:66.
- Valech N, Tort-Merino A, Coll-Padrós N, et al. Executive and language subjective cognitive decline complaints discriminate preclinical Alzheimer's disease from normal aging. *J Alzheimer's Dis: JAD*. 2018;61:689-703.
- Park MH, Min JY, Min HY, Lee HJ, Lee DH, Song MS. Subjective memory complaints and clinical characteristics in elderly Koreans: a questionnaire survey. *Int J Nurs Stud*. 2007;44:1400-1405.

- Balash Y, Mordechovich M, Shabtai H, Giladi N, Gurevich T, Korczyn AD. Subjective memory complaints in elders: depression, anxiety, or cognitive decline?. *Acta Neurol Scand*. 2013;127:344-350.
- Farias ST, Mungas D, Reed BR, et al. The measurement of everyday cognition (ECog): scale development and psychometric properties. *Neuropsychology*. 2008;22:531-544.
- Sheikh JI, Yesavage JA. *Geriatric Depression Scale (GDS): Recent Evidence and Development of a Shorter Version*. Haworth Press; 1986:165-173.
- Cummings JL, Mega M, Gray K, Rosenberg-Thompson S, Carusi DA, Gornbein J. The neuropsychiatric inventory. *Compreh Assess Psychopathol Dement*. 1994;44:2308.
- Ashburner J, Friston KJ. Voxel-Based morphometry—the methods. *Neuroimage*. 2000;11:805-821.
- Shaw LM, Vanderstichele H, Knapiak-Czajka M, et al. Cerebrospinal fluid biomarker signature in Alzheimer's disease neuroimaging initiative subjects. *Ann Neurol*. 2009;65:403-413.
- Pravatà E, Tavernier J, Parker R, Vavro H, Mintzer JE, Spampinato MV. The neural correlates of anomia in the conversion from mild cognitive impairment to Alzheimer's disease. *Neuroradiology*. 2015;58:59-67.
- Lars F, Stefan K, Stefan T, et al. Left anterior temporal lobe sustains naming in Alzheimer's dementia and mild cognitive impairment. *Curr Alzheimer's Res*. 2011;8:893-901.
- Melrose RJ, Campa OM, Harwood DG, Osato S, Mandelkern MA, Sultzer DL. The neural correlates of naming and fluency deficits in Alzheimer's disease: an FDG-PET study. *Int J Geriatr Psychiatry*. 2009;24:885-893.
- Triarhou LC. Cytoarchitectonics of the Rolandic operculum: morpho-functional ponderings. *Brain Struct Funct*. 2021;226:941-950.
- Chapleau M, Aldebert J, Montembeault M, Brambati SM. Atrophy in Alzheimer's disease and semantic dementia: an ALE meta-analysis of voxel-based morphometry studies. *J Alzheimer's Dis*. 2016;54:941-955.
- Zahn R, Garrard P, Talazko J, et al. Patterns of regional brain hypometabolism associated with knowledge of semantic features and categories in Alzheimer's disease. *J Cogn Neurosci*. 2006;18:2138-2151.
- Albert MS, DeKosky ST, Dickson D, et al. The diagnosis of mild cognitive impairment due to Alzheimer's disease: recommendations from the National Institute on Aging-Alzheimer's Association workgroups on diagnostic guidelines for Alzheimer's disease. *Alzheimer's Dement: J Alzheimer's Assoc*. 2011;7:270-279.
- Rabin LA, Smart CM, Crane PK, et al. Subjective cognitive decline in older adults: an overview of self-report measures used across 19 international research studies. *J Alzheimer's Dis: JAD*. 2015;48(Suppl 1):S63-86.
- Whitwell JL, Wiste HJ, Weigand SD, et al. Comparison of imaging biomarkers in the Alzheimer's disease neuroimaging initiative and the mayo clinic study of aging. *Arch Neurol*. 2012;69:614-622.
- Gianattasio KZ, Bennett EE, Wei J, et al. Generalizability of findings from a clinical sample to a community-based sample: a comparison of ADNI and ARIC. *Alzheimer's Dement: J Alzheimer's Assoc*. 2021;17:1265-1276.

## SUPPORTING INFORMATION

Additional supporting information may be found in the online version of the article at the publisher's website.

**How to cite this article:** Montembeault M, Stijelja S, Brambati SM, For the Alzheimer's Disease Neuroimaging Initiative. Self-reported word-finding complaints are associated with cerebrospinal fluid amyloid beta and atrophy in cognitively normal older adults. *Alzheimer's Dement*. 2022;14:e12274. <https://doi.org/10.1002/dad2.12274>