



Since January 2020 Elsevier has created a COVID-19 resource centre with free information in English and Mandarin on the novel coronavirus COVID-19. The COVID-19 resource centre is hosted on Elsevier Connect, the company's public news and information website.

Elsevier hereby grants permission to make all its COVID-19-related research that is available on the COVID-19 resource centre - including this research content - immediately available in PubMed Central and other publicly funded repositories, such as the WHO COVID database with rights for unrestricted research re-use and analyses in any form or by any means with acknowledgement of the original source. These permissions are granted for free by Elsevier for as long as the COVID-19 resource centre remains active.



Inhaled pulmonary vasodilators are not associated with improved gas exchange in mechanically ventilated patients with COVID-19: A retrospective cohort study

Anthony Steven Lubinsky, MD ^{a,*}, Shari B. Brosnahan, MD ^a, Andrew Lehr, MD ^a, Ola Elnadoury, PharmD, BCCCP ^b, Jacklyn Hagedorn, MD ^a, Bhaskara Garimella, MD ^b, Michael T. Bender, MD ^c, Nancy Amoroso, MD ^a, Antonio Artigas, MD, PhD ^d, Lieuwe D.J. Bos, MD, PhD ^e, David Kaufman, MD ^a

^a New York University Langone Health, 550 1st Ave, New York, NY 10016, United States of America

^b New York University Langone Brooklyn Hospital, 150 55th Street, Brooklyn, NY 11220, United States of America

^c New York University, Long Island School of Medicine, 259 1st Street, Mineola, NY 11501, United States of America

^d Critical Care Center, Corporacion Sanitaria Universitaria Parc Tauli, CIBER Enfermedades Respiratorias, Autonomus University of Barcelona, Parc Tauli 1, 08208 Sabadell, Spain

^e Intensive Care, Amsterdam UMC, location AMC, Meibergdreef 9, 1105AZ Amsterdam, the Netherlands

ARTICLE INFO

Keywords:

COVID-19
Inhaled nitric oxide
Epoprostenol
Ventilatory ratio
ARDS
Respiratory failure

ABSTRACT

Purpose: Measure the effect of inhaled pulmonary vasodilators on gas exchange in mechanically ventilated patients with COVID-19.

Methods: A retrospective observational cohort study at three New York University Hospitals was performed including eighty-four mechanically ventilated SARS Cov-2 nasopharyngeal PCR positive patients, sixty nine treated with inhaled nitric oxide (iNO) and fifteen with inhaled epoprostenol (iEPO). The primary outcomes were change in $P_{A}O_2:F_iO_2$ ratio, oxygenation Index (OI), and ventilatory ratio (VR) after initiation of inhaled pulmonary vasodilators.

Results: There was no significant change in $P_{A}O_2:F_iO_2$ ratio after initiation of iNO (mean -4.1 , 95% CI $-17.3-9.0$, $P = 0.54$) or iEPO (mean -3.4 , 95% CI $-19.7-12.9$, $P = 0.66$), in OI after initiation of iNO (mean 2.1 , 95% CI $-0.04-4.2$, $P = 0.054$) or iEPO (mean -3.4 , 95% CI $-19.7-12.9$, $P = 0.75$), or in VR after initiation of iNO (mean 0.17 , 95% CI $-0.03-0.36$, $P = 0.25$) or iEPO (mean 0.33 , 95% CI $-0.0847-0.74$, $P = 0.11$). $P_{A}O_2:F_iO_2$, OI and VR did not significantly change over a five day period starting the day prior to drug initiation in patients who received either iNO or iEPO assessed with a fixed effects model.

Conclusion: Inhaled pulmonary vasodilators were not associated with significant improvement in gas exchange in mechanically ventilated patients with COVID-19.

© 2022 Published by Elsevier Inc.

1. Introduction

Severe acute respiratory syndrome coronavirus 2 (SARS-CoV-2) causes coronavirus disease 2019 (COVID-19) and can lead to hypoxemic

Abbreviations: ANOVA, analysis of variance; ARDS, Acute Respiratory Distress Syndrome; c-AMP, cyclic adenosine monophosphate; c-GMP, cyclic guanosine monophosphate; CAD, Coronary Artery Disease; COVID-19, Coronavirus disease 2019; ECMO, Extracorporeal Membrane Oxygenation; F_iO_2 , Fraction of inspired oxygen; ICU, intensive care unit; iEPO, inhaled epoprostenol; iNO, inhaled nitric oxide; IQR, interquartile range; NYU, New York University; OI, Oxygenation Index; $P_{A}O_2$, Partial pressure of arterial oxygen; PBW, predicted body weight; RT-PCR, Real Time Polymerase chain reaction; SARS-Cov-2, Severe acute respiratory syndrome coronavirus 2; SOFA Score, Sequential Organ Failure Assessment Score; VR, Ventilatory Ratio. DOIs of original article: <https://doi.org/10.1016/j.jccr.2022.153988>, <https://doi.org/10.1016/j.jccr.2022.153987>, <https://doi.org/10.1016/j.jccr.2022.153989>.

* Corresponding author.

E-mail address: anthony.lubinsky@nyulangone.org (A.S. Lubinsky).

respiratory failure requiring hospitalization, intensive care unit admission (ICU), and mechanical ventilation. Severe acute hypoxemic respiratory failure due to coronavirus disease 2019 (COVID-19) frequently meets criteria for the acute respiratory distress syndrome (ARDS) and has been correlated with diffuse alveolar damage on autopsy histopathology of the lung [1-3]. Management of COVID-19 with ARDS consists of lung protective ventilation with low tidal volumes and low driving pressure, prone body position when $P_{a}O_2:F_iO_2$ ratio is under 150, and in some cases extracorporeal membrane oxygenation (ECMO) [4-7]. ARDS is characterized by a variable degree of microvascular occlusion, and early findings suggest that vascular and endothelial injury may be more prominent in ARDS due to COVID-19 [8,9]. Contrast enhanced chest CT scans of patients with COVID-19 have suggested abnormality of small blood vessels [10,11]. Post mortem examination of pulmonary endothelial cells via electron microscopy in patients who died of COVID-19 suggests pulmonary capillary endotheliopathy [12,13].

Immunothrombosis, neutrophil extracellular trap formation and innate immune activation are more prominent in the lung of patients COVID-19 as compared to influenza [14].

Inhaled pulmonary vasodilators including inhaled nitric oxide (iNO) and inhaled prostaglandins such as inhaled epoprostenol (iEPO) cause selective pulmonary vasodilation through cyclic guanosine monophosphate (c-GMP) and cyclic adenosine monophosphate (c-AMP) mediated smooth muscle relaxation, respectively, resulting in increased blood flow to ventilated lung units improving ventilation and perfusion matching [15]. Both agents may also possess anti-inflammatory and anti-platelet aggregation effects [16]. Both iNO and iEPO have been studied in ARDS and have been shown to improve the $P_{A}O_2:F_{I}O_2$ ratio, though they have been not found to reduce 30-day mortality or increase the number of ventilator-free days [17–20]. iNO decreases the alveolar dead space in animal models of acute lung injury [21,22]. Because COVID-19 appears to have a specific effect on blood vessels including the pulmonary vasculature, the effect of selective pulmonary vasodilators in COVID-19 may differ from that observed in ARDS due to other causes. We hypothesized that inhaled pulmonary vasodilators would improve oxygenation and decrease impairment in CO_2 elimination in mechanically ventilated patients with COVID-19.

2. Materials and methods

2.1. Study setting and patient population

We performed a retrospective, observational cohort study in three New York University (NYU) Langone Health hospitals in in close proximity to New York, NY. Adult patients (≥ 18 yr.) with positive Severe Acute Respiratory Syndrome Coronavirus 2 (SARS-CoV-2) nasopharyngeal real time – polymerase chain reaction (RT-PCR) specimen admitted to NYU Langone Medical Center, NYU Langone Brooklyn Hospital, and NYU Long Island Hospital and receiving invasive mechanical ventilation between March 1, 2020 and June 30, 2020 who were treated with iNO or iEPO were included. Exclusion criteria were absence of ventilator or arterial blood gas data on the day of starting pulmonary vasodilators, ECMO prior to or at the time of pulmonary vasodilator initiation, and cardiac arrest immediately before or after initiation of pulmonary vasodilators. The study was approved by the NYU Institutional Review Board (i20-00770).

2.2. Pulmonary vasodilators

An institutional guideline suggested inhaled pulmonary vasodilators can be considered in ARDS with $PaO_2:F_{I}O_2$ ratio < 200 , after optimization of lung protective mechanical ventilation and consideration of prone body position. The ultimate decision to start inhaled pulmonary vasodilators rested with the treating intensivist.

iNO was provided with the INOMAX system (Mallinckrodt Pharmaceuticals, Bedminster NJ). The injector module for the nitric oxide system was placed on the dry side of the ventilator circuit heated humidifier (Fischer and Paykel, Auckland NZ). The starting dose of iNO was 10–40 ppm and determined by the treating clinician. iNO was the only inhaled pulmonary vasodilator provided at NYU Langone Medical Center and NYU Langone Hospital - Long Island during the study period. iEPO was administered using a Medfusion 3500 syringe pump (Cary, NC), and syringe connected to an Aerogen Solo vibratory mesh nebulizer system (Aerogen, Mountain View CA) placed on the dry side of the ventilator circuit heated humidifier. The initial dose of iEPO was 50 ng/kg/min based on ideal body weight and titrated by the treating intensivist as tolerated based on clinical response. iEPO was the only pulmonary vasodilator provided at NYU Langone Brooklyn Hospital during the study period.

2.3. Data collection

Patient data were obtained from the electronic Medical Record (EMR; EPIC, Verona WI). All adult patients with positive SARS-CoV-2 nasopharyngeal RT-PCR admitted during the study period with orders or flowsheet documentation of iNO were reviewed. All patients receiving iEPO were obtained from a query of pharmacy records. Patients meeting all inclusion and no exclusion criteria were included for analysis. Mechanical ventilator, arterial blood gas and clinical data were collected on the date of mechanical ventilation, the day prior to initiation of inhaled pulmonary vasodilators, the day of initiation of inhaled pulmonary vasodilators before and after initiation of inhaled pulmonary vasodilators, and on the three subsequent days. The ventilator data and arterial blood gas with highest $P_{A}O_2:F_{I}O_2$ in supine position were collected on each study day. On the day selective pulmonary vasodilators were started ventilator parameters and arterial blood gas values were collected within four hours before, and after initiation of the selective pulmonary vasodilator. The primary endpoints were change in gas exchange after initiation of inhaled pulmonary vasodilators. Oxygenation was assessed by $P_{A}O_2:F_{I}O_2$ ratio, and the oxygenation Index (OI) ($F_{I}O_2 * \text{Mean Airway Pressure} / P_{A}O_2$) [23]. Impairment in CO_2 elimination was estimated with ventilatory ratio (VR) ($V_{E \text{ measured}} * PaCO_2 \text{ measured} / V_{E \text{ predicted}} * PaCO_2 \text{ predicted}$) [24,25].

2.4. Statistical analysis

Continuous variables are expressed as mean \pm standard deviation or medians and interquartile ranges (IQR). Categorical variables are expressed as frequencies and percentages. Comparisons between groups were performed with Kruskal Wallis test for continuous variables and Chi Square or Fischer's Exact tests for categorical variables. Change in $P_{A}O_2:F_{I}O_2$, OI, and VR were assessed using a paired Student's *t*-test, and serial measures were assessed with analysis of variance using a fixed effects model. A *P* value of < 0.05 was considered statistically significant. Statistical analysis was performed in SAS 9.4 (Carey, NC).

3. Results

We screened 120 patients and excluded 36 for the following reasons: ECMO ($n = 15$), inadequate records ($n = 14$), spontaneously breathing at initiation of selective pulmonary vasodilators ($n = 4$), cardiac arrest at time of selective pulmonary vasodilator initiation ($n = 3$). The final study population included 84 patients, of which 69 received iNO and 15 received iEPO. (See Fig 1.) Patients were predominantly male (73% male iNO vs 93% male iEPO $p = 0.1$). Demographic and medical history of the groups is summarized in Table 1. Pharmacotherapy and immunomodulatory treatments reflected the current standards during the study period. Mortality by hospital day 30 was high in both groups but significantly worse in the iEPO group without correcting for severity of illness (52 vs 93%, $P = 0.0031$).

Clinical and laboratory parameters on the day of pulmonary vasodilator initiation are summarized in Table 2. On the day of initiating inhaled pulmonary vasodilators patients in both groups had predominantly moderate or severe ARDS. Patients who received iEPO had more disturbed gas exchange and significantly lower $P_{A}O_2:F_{I}O_2$, and higher OI and VR than those who received iNO. Neuromuscular blockade was more common in patients receiving iEPO (55 vs 87%, $P = 0.02$). A majority of patients in both groups received vasopressors, and anticoagulation.

iNO was started a median of 6 days after the initiation of mechanical ventilation and continued for a median of 106 h. iEPO was started a median of 7 days after the initiation of mechanical ventilation and continued for a median of 53 h. We performed paired *t*-tests of $P_{A}O_2:F_{I}O_2$, OI and VR before and after iNO or iEPO, shown in Fig. 2. There was no significant increase in $P_{A}O_2:F_{I}O_2$ in patients who received iNO (mean – 4.1

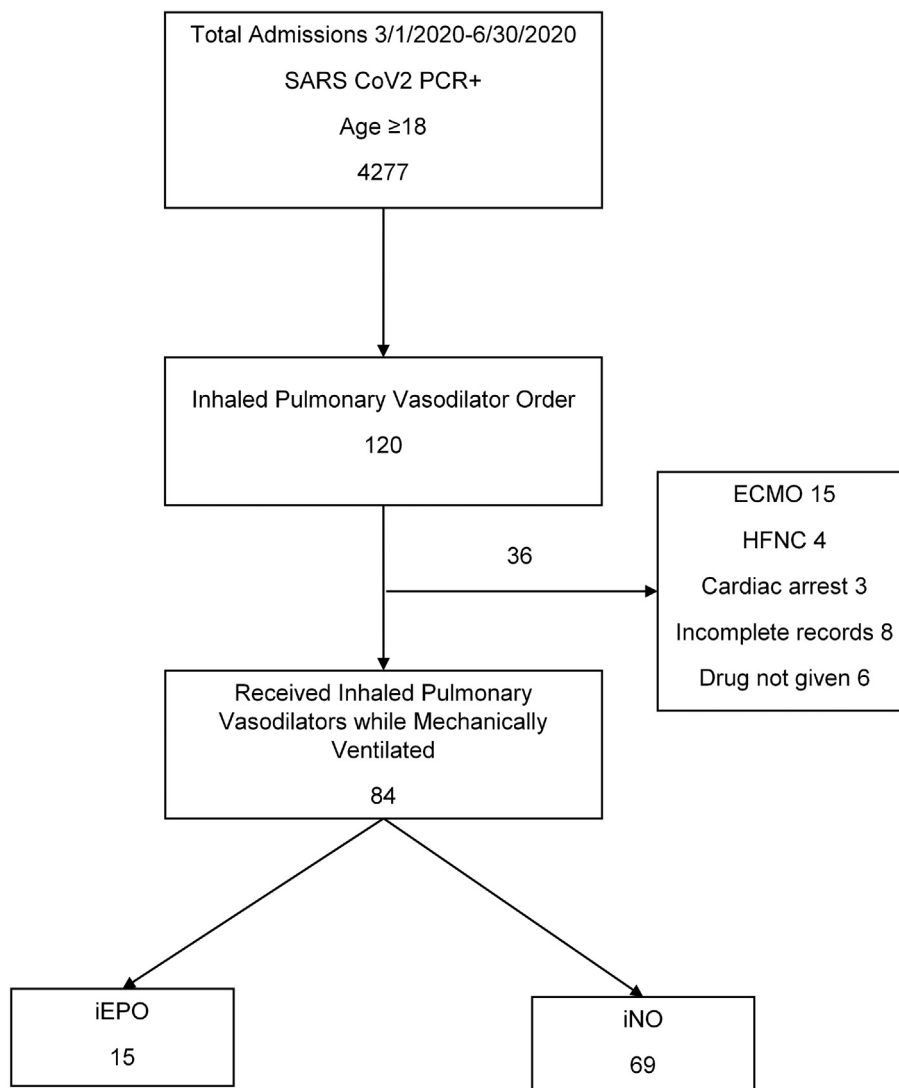


Fig. 1. Patient flow figure.

mmHg, 95% CI -17.3- 9.0 mmHg, $P = 0.54$), or iEPO (mean - 3.4 mmHg, 95% CI -19.7- 12.9 mmHg, $P = 0.66$). Similarly, there was no significant improvement in OI in patients who received iNO (mean 2.1, 95% CI -0.04- 4.2, $P = 0.054$), or iEPO (mean - 3.4, 95% CI -19.7- 12.9, $P = 0.75$). Finally, there was no significant improvement in VR in patients who received iNO (mean 0.17, 95% CI -0.03- 0.36, $P = 0.25$), or iEPO (mean 0.33, 95% CI -0.0847- 0.74, $P = 0.11$). The proportion of patients with greater than 20% increase in $P_{A}O_2:F_{I}O_2$ was 32/84 (38%). There was no significant correlation between time from initiation of mechanical ventilation to start of selective pulmonary vasodilators and the responses to selective pulmonary vasodilators as measured by changes in $P_{A}O_2:F_{I}O_2$, OI or VR and (Supplementary Fig. 1). Similarly there was no significant correlation between $P_{A}O_2:F_{I}O_2$, OI or VR prior to the start of selective pulmonary vasodilators and the responses to selective pulmonary vasodilators as measured by changes in $P_{A}O_2:F_{I}O_2$, OI or VR (Supplementary Fig. 2).

We assessed gas exchange over 5 days starting the day prior to initiation of inhaled pulmonary vasodilators and ending on day 3 after start of inhaled pulmonary vasodilators using a fixed effects model shown in Fig. 3. There was substantial dropout in both groups due to death, and one patient in the iNO group was placed on ECMO. Gas exchange as assessed by $P_{A}O_2:F_{I}O_2$, OI and VR in patients who received iEPO was significantly worse than patients who were received iNO. We did not

observe a significant change in $P_{A}O_2:F_{I}O_2$ ratio, OI, or VR over the five-day study period.

Adverse consequences of selective pulmonary dilators were minimal and similar in both groups. The highest carboxyhemoglobin percentage observed after initiation of inhaled pulmonary vasodilators was 3% in the iEPO group and 2.9% in the iNO group. The highest methemoglobin percentage observed after initiation of inhaled pulmonary vasodilators was 2.1% in the iEPO group and 2.7% in the iNO group. The lowest observed platelet count in the iEPO group was 54,000 per mm^3 and observed on the second day after initiation of iEPO. The lowest observed platelet count in the iNO group was 49,000 per mm^3 and observed on the third day after initiation of iNO. Carboxyhemoglobin percentage, methemoglobin percentage and platelet count were not significantly different in either group at any study time point.

4. Discussion

Here we report our observations of a retrospective observational cohort study of the effects of selective inhaled pulmonary vasodilators on gas exchange in a relatively large group of mechanically ventilated patients with ARDS due to COVID-19. We analyzed both oxygenation (using $P_{A}O_2:F_{I}O_2$ ratio and OI) and carbon dioxide removal (VR), and

Table 1
Subject demographic characteristics and clinical outcomes.

	iNO		iEpo		P value
	Number	Percent	Number	Percent	
	N = 69		N = 15		
Male	49	71.0	14	93.3	0.1
Female	20	29.0	1	6.7	0.1
White	29	42.0	3	20.0	0.08
African american	8	11.6	0	0	0.08
Asian	4	5.8	1	6.7	0.08
Other race	19	27.5	8	53.3	0.08
Unknown	5	7.2	3	20.0	0.08
Latino	24	34.8	9	60.0	0.093
DM	24	34.8	3	20.0	0.22
HTN	34	49.3	5	33.3	0.40
Congestive Heart Failure	3	4.3	0	0	0.45
Chronic Renal Disease	8	11.6	1	6.7	0.28
Liver disease	6	8.7	0	0.0	0.24
Asthma	7	10.1	0	0.0	0.46
HIV	1	1.4	1	6.7	0.33
Cancer	4	5.8	0	0.0	0.36
Organ transplant	3	4.3	0	0	0.54
Tracheostomy	31	44.9	2	13.3	0.039
Mortality day 30	36	52.2	14	93.3	0.0031
Renal Replacement Therapy	15	21.7	7	46.7	0.58
	Median	IQR	Median	IQR	
Age	62	10.0	54	22.0	0.0032
BMI	30.62	10.1	30.5	7.7	0.85
Days Intubation to Inhaled Pulmonary vasodilator	6	11.0	7	11.0	0.40
Inhaled Pulmonary Vasodilator Hours	106	164.0	53	58.0	0.0048

Table 2
Mechanical ventilation variables, laboratory variables, and treatments.

	iNO		iEPO		P value
	Median	IQR	Median	IQR	
Tidal volume, (ml/kg of PBW)	7.769	1.360	7.25	2.6	0.50
V _E , (liters/min)	12.6	3.1	15.3	7.8	0.17
PEEP, (cm H ₂ O)	12	5.0	14	4.0	0.096
Mean airway pressure, (cm H ₂ O)	19	6.0	21	7.0	0.036
F _I O ₂	100	30.0	100	0.0	0.020
P _A O ₂ :F _I O ₂ , (mmHg)	93.7	59.7	68	65.0	0.025
OI	21.9	12.2	29.4	29.4	0.012
VR	2.63	1.2	4.08	1.4	0.008
pH	7.33	0.13	7.21	0.17	0.006
p _a CO ₂ , (mmHg)	49	14.0	68	26.0	0.001
p _a O ₂ , (mmHg)	82	51.0	79	84.0	0.65
SOFA	8	4.0	9.5	4.0	0.035
CRP, mg/L	140	169.0	231	171.0	0.063
WBC x10 ³ /μL	12.75	6.1	22.8	13.2	0.002
Hemoglobin, g/dl	10.9	3.4	9.15	3.3	0.24
Platelets x10 ³ /μL	239.5	118.0	227	99.0	0.97
Total bilirubin, mg/dl	0.65	0.7	0.6	0.7	0.99
Albumin, g/dl	2.5	0.4	1.6	0.7	<0.0001
D-dimer, ng/ml	2126	3477.0	2096	6710.0	0.72
Creatinine, ng/dl	1.69	2.2	2.42	3.5	0.32
	n (percent)		n (percent)		
Vasopressors	48 (73%)		13 (87%)		0.34
Prone	30 (46%)		8 (53%)		0.58
Therapeutic Anticoagulation	44 (67%)		13 (87%)		0.13
Neuromuscular Blockade	36 (55%)		13 (87%)		0.020
Azithromycin	61 (88%)		12 (80%)		0.41
Hydroxychloroquine	67 (97%)		15 (100%)		0.67
Nitazoxanide	4 (6%)		8 (53%)		<0.0001
Remdesivir	11 (16%)		0 (0%)		0.20
Corticosteroids	52 (75%)		13 (87%)		0.50
Convalescent Plasma	14 (20%)		0 (0%)		0.064
anti-IL-6 therapy	42 (61%)		3 (20%)		0.0085

our observations suggest that both iNO and iEPO do not significantly change gas exchange in this population.

A large number of studies have evaluated the effects of inhaled pulmonary vasodilators in mechanically ventilated patients with COVID-19. DeGrado et al. did not find a significant increase in P_AO₂:F_IO₂ in a cohort of 38 patients with COVID-19 who were treated with iEPO and 11 who were treated with iNO [26]. Longobaro et al. did not find a significant increase in P_AO₂:F_IO₂ in 27 patients with COVID-19 who received iNO, as compared to a significant increase in a group of 11 patients with ARDS [27]. Lotz et al. reported a significant improvement in PaO₂:FiO₂ after initiation of iNO at 20 ppm in a group of 7 patients with severe COVID-19 ARDS [28]. A majority (65%) of 34 patients treated with iNO were defined as responders in a single center prospective cohort study by Abou-Arab [29]. In a cohort of 80 intubated patients with COVID-19 Sonti et al. found a median change in P_AO₂:F_IO₂ of 9 mmHg (IQR-9, +73) after initiation of iEPO with half of these patients showing a positive response. Responders were more likely to have lower initial P_AO₂:F_IO₂, and prone body position [30]. Almitrine bismesylate is a respiratory stimulant and pulmonary arterial vasoconstrictive agent which can improve ventilation-perfusion matching. Studies of the effect of almitrine bismesylate on oxygenation in COVID-19 are similarly mixed, with reports of significant improvement in P_AO₂:F_IO₂, and of no change in P_AO₂:F_IO₂ alone or in combination with iNO [31,32].

Both iNO and iEPO selectively dilate pulmonary vasculature of well-ventilated alveoli but with different pharmacological mechanisms and anticipated adverse effects [15]. iNO is a lipophilic gas that readily diffuses through alveolar membranes and into the surrounding capillaries where it stimulates cGMP-mediated processes including vascular smooth muscle relaxation leading to pulmonary vasodilation, platelet inhibition and regulation of cytokine production by leukocytes. Epoprostenol is a synthetic analog of endogenous prostacyclin, which is produced in the endothelium and is responsible for vascular smooth muscle relaxation and maintaining platelet stabilization. By binding to prostanoid IP receptors in the endothelium it causes a cascade of cAMP-mediated reactions resulting in vascular smooth muscle relaxation and pulmonary vasodilation. It also increases intracellular cAMP in platelets which enhances calcium release from thrombocytes rendering them inactive [33]. Inhaled selective pulmonary vasodilators improve gas exchange, but not risk of death or ventilator-free days, in patients with ARDS.

We observed a response rate of approximately 38% in the population we studied, which is lower than the 65% response rate reported in previous studies of inhaled selective pulmonary vasodilators [34]. The mechanisms responsible for the lack of response in patients with COVID-19 ARDS are unknown. We speculate that the lower response rate we observed among COVID-19-ARDS patients may relate to the pulmonary vascular effects of COVID-19. COVID-19 ARDS has been associated with thrombosis as well as abnormalities of pulmonary capillary endothelial cells [12]; these findings have also been reported in non-COVID-19-ARDS [9]. Pulmonary arterioles in patients with COVID-19 ARDS have been shown to have an abnormal appearance on contrast enhanced CT scan of the chest, described as a “vascular tree in bud pattern” [13]. Heterogeneity of lung perfusion has been described in contrast enhanced CT scans of patients with COVID-19 with and without pulmonary embolism [10,13]. Maldistribution of aerated lung tissue and lung perfusion correlated with impairment in P_AO₂:F_IO₂ in spontaneously breathing and mechanically ventilated patients with COVID-19 [35]. Pulmonary vascular involvement including neutrophil recruitment, neutrophil extracellular trap formation, and vascular occlusion has been described in COVID-19 ARDS and found to be more severe than in influenza [14]. Whether the prevalence of pulmonary vascular thrombosis is different in COVID-19-ARDS compared with ARDS from other causes is unknown. The physiologic effects of inhaled selective pulmonary vasodilators depends on a complex balance of vasodilation, elaboration of vasoconstrictors, and vascular smooth muscle

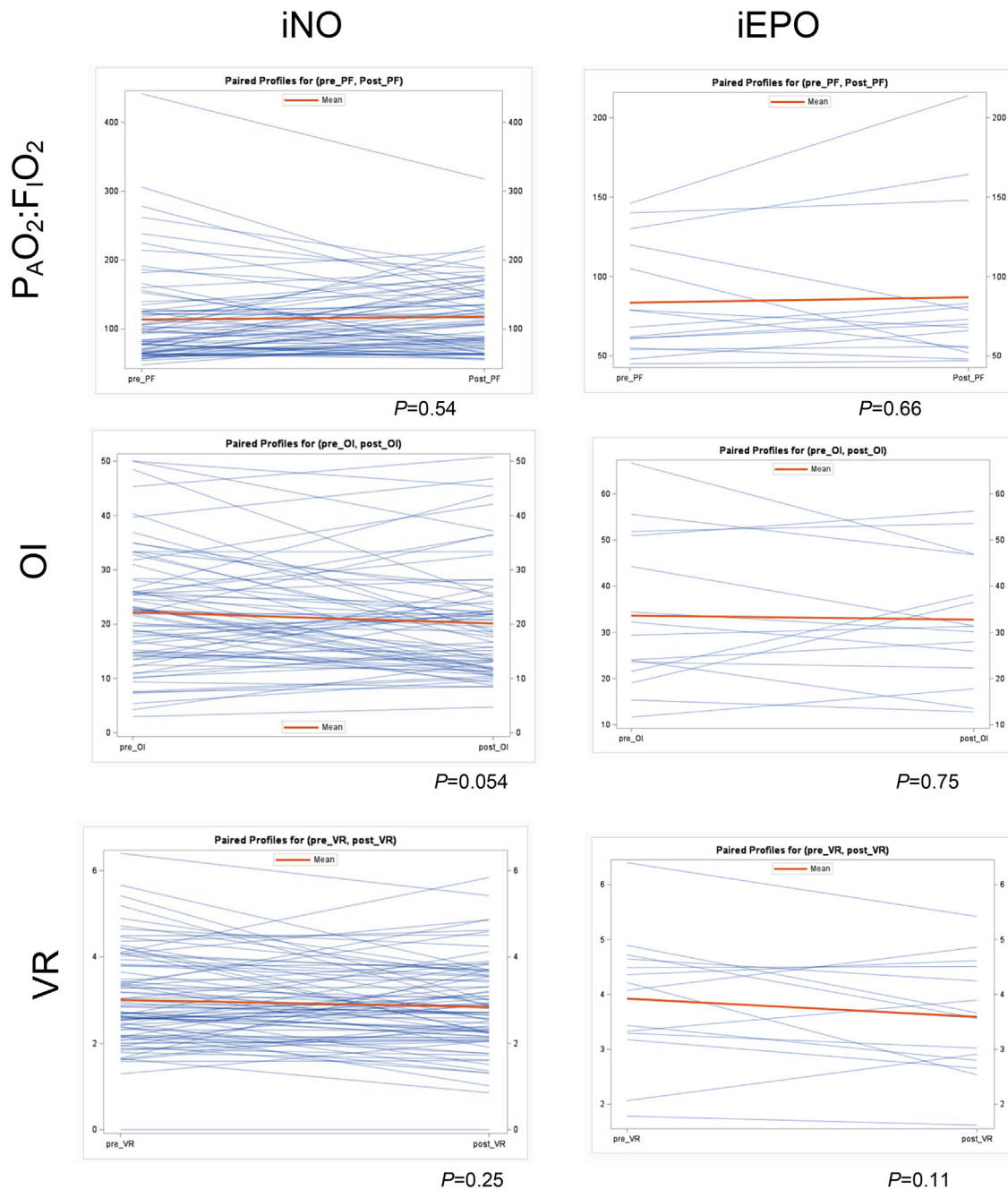


Fig. 2. Paired student's t-tests of $P_{A}O_2:F_{I}O_2$, OI, and VR before and after initiation of iNO or iEPO.

response to these mediators [16]. Whether direct effects of viral infection or the inflammatory response to it explain the lower response rate that we observe remains a subject for future exploration. Because we use surrogate measures of the efficiency of oxygen and carbon dioxide transfer to estimate the effects of iNO and iEPO, we can only speculate about what mechanisms might underlie our observations. Mechanistic research would require more precise measures such as mixed inert gas elimination technique (MIGET), but this technique is cumbersome and currently available for research purposes at only a few centers worldwide. Whether exhaled gas might be safely collected and analyzed during the COVID-19 pandemic remains uncertain.

Our study has several strengths. We were able to include a relatively large cohort of patients who received iNO and a smaller group who received iEPO, included measurements of oxygenation as well as an

estimate of ventilatory dead space, and an assessment of gas exchange over a 5-day period. Doses of iNO and iEPO are typical of those used in clinical practice, including the COVID-19 pandemic era.

The weaknesses of our study relate to a retrospective study design. We are not able to assess the effect of inhaled pulmonary vasodilators on clinical outcomes such as mortality or duration of mechanical ventilation. The higher 30 day mortality in patients who received iEPO likely relates to a higher baseline severity of illness in those patients. Patients treated during the study period received the contemporary standard of care pharmacotherapy for COVID-19, which has subsequently evolved. It is possible that the effect of selective pulmonary vasodilators on gas exchange may be different in patients with a different severity of illness, or at a different time point in the disease. We cannot exclude the possibility of a small response to these drugs, or that there are subgroups

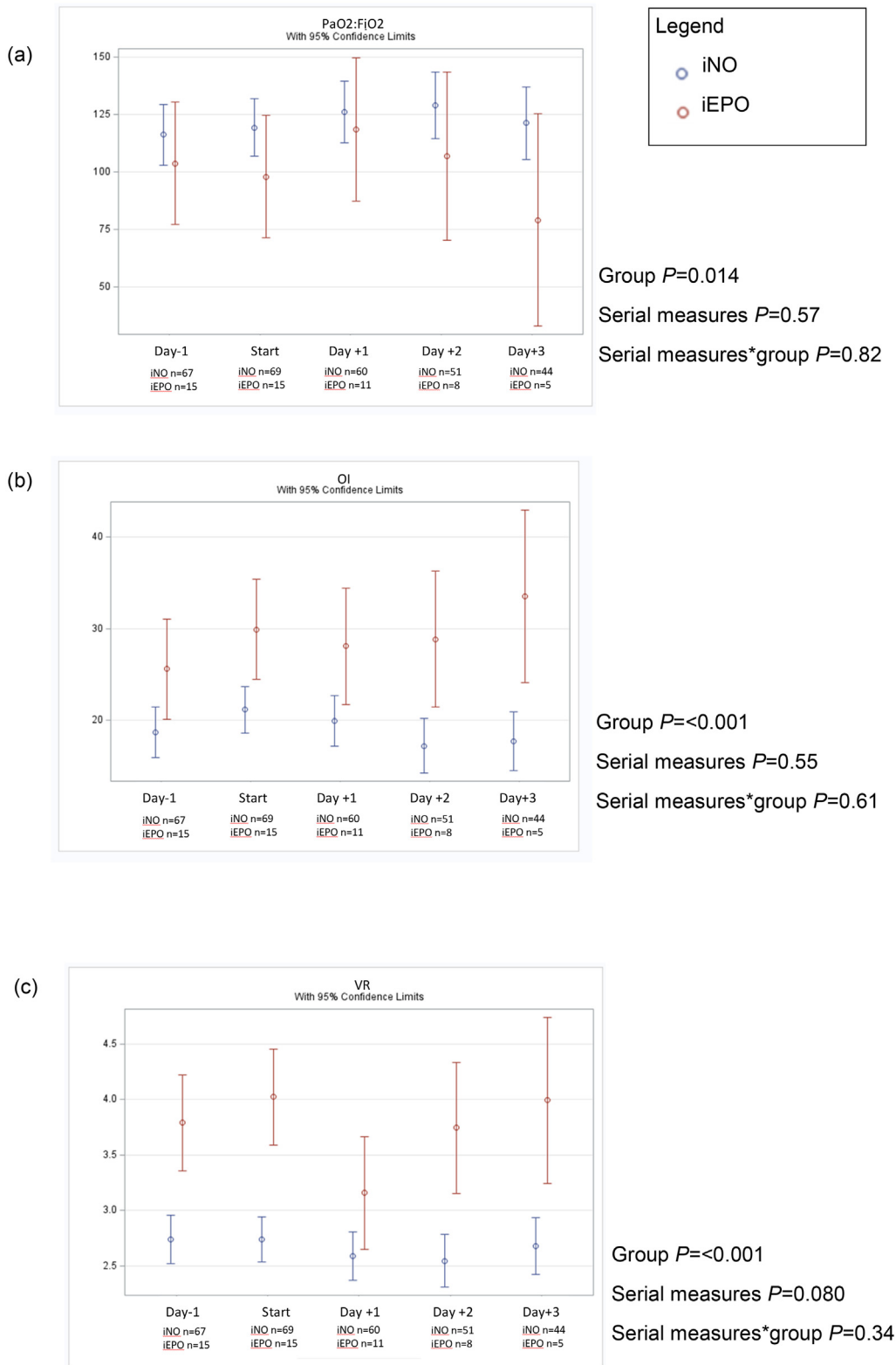


Fig. 3. Fixed effects model serial measures ANOVA of P_AO₂:F_IO₂ (a), OI (b), VR (c) over five consecutive days beginning one day prior to initiation of iNO or iEPO.

which may have a response to iEPO or iNO. Patients in our study started selective inhaled pulmonary vasodilators relatively late in the course of ARDS. However, we did not find a correlation between time from the initiation of mechanical ventilation and the start of selective inhaled pulmonary vasodilators and change in gas exchange. Nor did we

observe an association between the severity of disordered gas exchange and a favorable response to selective inhaled pulmonary vasodilators.

COVID-19 causes severe acute respiratory failure, which is both similar to ARDS from other causes, and a source of unique challenges. We hypothesized that selective inhaled pulmonary vasodilators will improve

oxygenation and decrease alveolar dead space. Neither oxygenation nor efficiency of pulmonary CO₂ elimination were significantly improved after initiation of inhaled pulmonary vasodilators in a group of 84 mechanically ventilated adult patients with ARDS due to COVID-19. It is possible that the vascular manifestations of COVID-19 result in a specific subtype of lung injury in which the pulmonary vasculature is less responsive to selective inhaled pulmonary vasodilators.

Funding statement

This project did not receive any specific grant funding from agencies in public, commercial or not-for-profit sectors.

Prior presentation

This work has not been previously published in abstract or print form.

Conflicts of interest

ASL, AL, OE, BG, SB, JH, NA, MB, LB none.

AA Dr. Artigas's institution received funding from Lilly Foundation, and received research funding from Grifols, Fisher&Paykel and Aerogen.

DK Dr. Kaufman has received research funding from Fisher & Paykel, Cheetah Medical, and the NIH/NHLBI. He is a member of the medical advisory board of Pulsion Medical Systems.

Author statement

ASL was responsible for the design, data analysis, and main authorship of this manuscript, SBB, MTB, NA, DAK, AA, LB, OE, BG contributed to study design. OE, AL, JH, BG contributed to data collection. All authors contributed to final manuscript and revisions.

Acknowledgements

We thank the Respiratory Care Departments at NYU Langone Medical Center, NYU Langone Brooklyn Hospital, and NYU-Long Island Hospital for their service during the COVID-19 pandemic with special thanks to Nathanael Albright, Robert Sparaco, Lisa Hoffman, Vernan Druses, Judy Ackermann, and Joy Thomas.

Appendix A. Supplementary data

Supplementary data to this article can be found online at <https://doi.org/10.1016/j.jcrr.2022.153990>.

References

- [1] Ranieri VM, Rubenfeld GD, Thompson BT, et al. Acute respiratory distress syndrome: the Berlin definition. *JAMA*. 2012. <https://doi.org/10.1001/jama.2012.5669>. Published online.
- [2] Menter T, Haslbauer JD, Nienhold R, et al. Postmortem examination of COVID-19 patients reveals diffuse alveolar damage with severe capillary congestion and varied findings in lungs and other organs suggesting vascular dysfunction. *Histopathology*. 2020. <https://doi.org/10.1111/his.14134>. Published online.
- [3] Carsana L, Sonzogni A, Nasr A, et al. Pulmonary post-mortem findings in a series of COVID-19 cases from northern Italy: a two-Centre descriptive study. *Lancet Infect Dis*. 2020;20(10):1135–40. [https://doi.org/10.1016/S1473-3099\(20\)30434-5](https://doi.org/10.1016/S1473-3099(20)30434-5).
- [4] Guérin C, Reignier J, Richard J-C, et al. Prone positioning in severe acute respiratory distress syndrome. *N Engl J Med*. 2013. <https://doi.org/10.1056/nejmoa1214103>. Published online.
- [5] Combes A, Hajage D, Capellier G, et al. Extracorporeal membrane oxygenation for severe acute respiratory distress syndrome. *N Engl J Med*. 2018. <https://doi.org/10.1056/nejmoa1800385>. Published online.
- [6] Ventilation with lower tidal volumes as compared with traditional tidal volumes for acute lung injury and the acute respiratory distress syndrome. *N Engl J Med*. 2000. <https://doi.org/10.1056/nejm200005043421801>. Published online.
- [7] Peck GJ, Mugford M, Tiruvoipati R, et al. Efficacy and economic assessment of conventional ventilatory support versus extracorporeal membrane oxygenation for

- severe adult respiratory failure (CESAR): a multicentre randomised controlled trial. *Lancet*. 2009. [https://doi.org/10.1016/S0140-6736\(09\)61069-2](https://doi.org/10.1016/S0140-6736(09)61069-2). Published online.
- [8] Tomaszewski JF, Davies P, Boggis C, Greene R, Zapol WM, Reid LM. The pulmonary vascular lesions of the adult respiratory distress syndrome. *Am J Pathol*. 1983;112(1):112–26.
- [9] Tomaszewski JF. Pulmonary pathology of acute respiratory distress syndrome. *Clin Chest Med*. 2000. [https://doi.org/10.1016/S0272-5231\(05\)70158-1](https://doi.org/10.1016/S0272-5231(05)70158-1). Published online.
- [10] Beenen LFM, Bos LD, Scheerder MJ, et al. Extensive pulmonary perfusion defects compatible with microthrombosis and thromboembolic disease in severe Covid-19 pneumonia. *Thromb Res*. 2020. <https://doi.org/10.1016/j.thromres.2020.08.026>. Published online.
- [11] Grillet F, Busse-Coté A, Calame P, Behr J, Delabrousse E, Aubry S. COVID-19 pneumonia: microvascular disease revealed on pulmonary dual-energy computed tomography angiography. *Quant Imaging Med Surg*. 2020. <https://doi.org/10.21037/QIMS-20-708>. Published online.
- [12] Ackermann M, Verleden SE, Kuehnel M, et al. Pulmonary vascular endothelialitis, thrombosis, and angiogenesis in COVID-19. *N Engl J Med*. 2020. <https://doi.org/10.1056/nejmoa2015432>. Published online.
- [13] Patel BV, Arachchillage DJ, Ridge CA, et al. Pulmonary angiopathy in severe COVID-19: physiologic, imaging, and hematologic observations. *Am J Respir Crit Care Med*. 2020. <https://doi.org/10.1164/rccm.202004-1412OC>. Published online.
- [14] Nicolai L, Leunig A, Brambs S, et al. Vascular neutrophilic inflammation and immunothrombosis distinguish severe COVID-19 from influenza pneumonia. *J Thromb Haemost*. 2020. <https://doi.org/10.1111/jth.15179>. Published online.
- [15] Dzierba AL, Abel EE, Buckley MS, Lat I. A review of inhaled nitric oxide and aerosolized epoprostenol in acute lung injury or acute respiratory distress syndrome. *Pharmacotherapy*. 2014;34(3):279–90. <https://doi.org/10.1002/phar.1365>.
- [16] Griffiths MJD, Evans TW. Inhaled nitric oxide therapy in adults. *N Engl J Med*. 2005. <https://doi.org/10.1056/nejmra051884>. Published online.
- [17] Gebistorf F, Karam O, Wetterslev J, Afshari A. Inhaled nitric oxide for acute respiratory distress syndrome (ARDS) in children and adults. *Cochrane Database Syst Rev*. 2016. <https://doi.org/10.1002/14651858.CD002787.pub3>. Published online.
- [18] Taylor RW, Zimmerman JL, Dellinger RP, et al. Low-dose inhaled nitric oxide in patients with acute lung injury: a randomized controlled trial. *JAMA*. 2004. <https://doi.org/10.1001/jama.291.13.1603>. Published online.
- [19] Torbic H, Szumita PM, Anger KE, Nuccio P, LaGambina S, Weinhouse G. Inhaled epoprostenol vs inhaled nitric oxide for refractory hypoxemia in critically ill patients. *J Crit Care*. 2013;28(5):844–8. <https://doi.org/10.1016/j.jcrr.2013.03.006>.
- [20] Ammar MA, Bauer SR, Bass SN, Sasiidhar M, Mullin R, Lam SW. Noninferiority of inhaled epoprostenol to inhaled nitric oxide for the treatment of ARDS. *Ann Pharmacother*. 2015;49(10):1105–12. <https://doi.org/10.1177/1060028015595642>.
- [21] Skimming JW, Banner MJ, Spalding HK, Jaeger MJ, Burchfield DJ, Davenport PW. Nitric oxide inhalation increases alveolar gas exchange by decreasing deadspace volume. *Crit Care Med*. 2001. <https://doi.org/10.1097/00003246-200106000-00022>. Published online.
- [22] Dahm PL, Jonson B, De Robertis E, et al. The effects of nitric oxide inhalation on respiratory mechanics and gas exchange during endotoxaemia in the pig. *Acta Anaesthesiol Scand*. 1998. <https://doi.org/10.1111/j.1399-6576.1998.tb05163.x>. Published online.
- [23] Trachsel D, McCrindle BW, Nakagawa S, Bonn D. Oxygenation index predicts outcome in children with acute hypoxemic respiratory failure. *Am J Respir Crit Care Med*. 2005. <https://doi.org/10.1164/rccm.200405-625OC>. Published online.
- [24] Morales-Quinteros L, Schultz MJ, Bringué J, et al. Estimated dead space fraction and the ventilatory ratio are associated with mortality in early ARDS. *Ann Intensive Care*. 2019;9(1). <https://doi.org/10.1186/s13613-019-0601-0>.
- [25] Sinha P, Calfee CS, Beitler JR, et al. Physiologic analysis and clinical performance of the ventilatory ratio in acute respiratory distress syndrome. *Am J Respir Crit Care Med*. 2019. <https://doi.org/10.1164/rccm.201804-0692OC>. Published online.
- [26] DeGrado JR, Szumita PM, Schuler BR, et al. Evaluation of the efficacy and safety of inhaled epoprostenol and inhaled nitric oxide for refractory hypoxemia in patients with coronavirus disease 2019. *Crit Care Explor*. 2020;2(10):e0259. <https://doi.org/10.1097/cce.0000000000000259>.
- [27] Longobardo A, Montanari C, Shulman R, Benhalim S, Singer M, Arulkumaran N. Inhaled nitric oxide minimally improves oxygenation in COVID-19 related acute respiratory distress syndrome. *Br J Anaesth*. 2021. <https://doi.org/10.1016/j.bja.2020.10.011>. Published online.
- [28] Lotz C, Muellenbach RM, Meybohm P, et al. Effects of inhaled nitric oxide in COVID-19-induced ARDS – is it worthwhile? *Acta Anaesthesiol Scand*. 2021. <https://doi.org/10.1111/aas.13757>. Published online.
- [29] Abou-Arab O, Huette P, Debouvries F, Dupont H, Jounieaux V, Mahjoub Y. Inhaled nitric oxide for critically ill Covid-19 patients: a prospective study. *Crit Care*. 2020;24(1):1–3. <https://doi.org/10.1186/s13054-020-03371-x>.
- [30] Sonti R, Pike CW, Cobb N. Responsiveness of inhaled epoprostenol in respiratory failure due to COVID-19. *J Intensive Care Med*. 2020. <https://doi.org/10.1177/0885066620976525>. Published online.
- [31] Barthélémy R, Blot PL, Tiepolo A, et al. Efficacy of almitrine in the treatment of hypoxemia in Sars-Cov-2 acute respiratory distress syndrome. *Chest*. 2020. <https://doi.org/10.1016/j.chest.2020.05.573>. Published online.
- [32] Cardinale M, Esnault P, Cotte J, Cungi PJ, Goutorbe P. Effect of almitrine bismesylate and inhaled nitric oxide on oxygenation in COVID-19 acute respiratory distress syndrome. *Anaesth Crit Care Pain Med*. 2020. <https://doi.org/10.1016/j.accpm.2020.05.014>. Published online.

- [33] Fuller BM, Mohr NM, Skrupky L, Fowler S, Kollef MH, Carpenter CR. The use of inhaled prostaglandins in patients with ARDS: a systematic review and meta-analysis. *Chest*. 2015;147(6):1510–22. <https://doi.org/10.1378/chest.14-3161>.
- [34] Abou-Arab O, Huette P, Debouvries F, Dupont H, Jounieaux V, Mahjoub Y. Inhaled nitric oxide for critically ill Covid-19 patients: a prospective study. *Crit Care*. 2020;24(1):1–3. <https://doi.org/10.1186/s13054-020-03371-x>.
- [35] Ball L, Robba C, et al. Lung distribution of gas and blood volume in critically ill COVID-19 patients: a quantitative dual-energy computed tomography study. *Crit Care*. 2021;25. <https://doi.org/10.1186/s13054-021-03610-9>. Published online.