



# Characterization of the genomic landscape in large-scale Chinese patients with pancreatic cancer

Xiaofei Zhang,<sup>a,1</sup> Tiebo Mao,<sup>a,1</sup> Bei Zhang,<sup>b</sup> Haiyan Xu,<sup>a</sup> Jiujiu Cui,<sup>a</sup> Feng Jiao,<sup>a</sup> Dongqin Chen,<sup>a</sup> Yu Wang,<sup>a</sup> Jiong Hu,<sup>a</sup> Qing Xia,<sup>a</sup> Weiyu Ge,<sup>a</sup> Shumin Li,<sup>a</sup> Ming Yue,<sup>a</sup> Jingyu Ma,<sup>a</sup> Jiayu Yao,<sup>a</sup> Yongchao Wang,<sup>a</sup> Yanling Wang,<sup>a</sup> Daiyuan Shentu,<sup>a</sup> Xiao Zhang,<sup>a</sup> Shiqing Chen,<sup>b</sup> Yuezong Bai,<sup>b</sup> Yuexiang Wang,<sup>g</sup> Xuebin Zhang,<sup>f</sup> Qiang Liu,<sup>e</sup> Yongwei Sun,<sup>c</sup> Deliang Fu,<sup>d</sup> Yingbin Liu,<sup>c</sup> Lei Xiong,<sup>b,\*\*</sup> and Liwei Wang<sup>a,\*</sup>

<sup>a</sup>State Key Laboratory of Oncogenes and Related Genes, Shanghai Cancer Institute, Department of Oncology, Renji Hospital, School of Medicine, Shanghai Jiao Tong University, Shanghai, China

<sup>b</sup>The Medical Department, 3D Medicines Inc., Shanghai, China

<sup>c</sup>Department of Biliary-Pancreatic Surgery, Renji Hospital, School of Medicine, Shanghai Jiao Tong University, Shanghai, China

<sup>d</sup>Department of Pancreatic Surgery, Pancreatic Disease Institute, Huashan Hospital, Shanghai Medical College, Fudan University, Shanghai, China

<sup>e</sup>Department of Pathology, Renji Hospital, School of Medicine, Shanghai Jiao Tong University, Shanghai, China

<sup>f</sup>Department of Interventional Oncology, Renji Hospital, School of Medicine, Shanghai Jiao Tong University, Shanghai, China

<sup>g</sup>Head of Laboratory of Cancer Progression and Translational Medicine Shanghai Institute of Nutrition and Health, Chinese Academy of Sciences, Shanghai, China

## Summary

**Background** Pancreatic ductal adenocarcinoma (PDAC) is a malignant tumor with an extremely poor prognosis. Effective targets for anticancer therapy confirmed in PDAC are limited. However, the characteristics of genomics have not been fully elucidated in large-scale patients with PDAC from China.

**Methods** We collected both blood and tissue samples from 1080 Chinese patients with pancreatic cancer and retrospectively investigated the genomic landscape using next-generation sequencing (NGS).

**Findings** We found recurrent somatic mutations in *KRAS* (83.2%), *TP53* (70.6%), *CDKN2A* (28.8%), *SMAD4* (23.0%), *ARID1A* (12.8%) and *CDKN2B* (8.9%) in Chinese PDAC patients. Compared with primary pancreatic cancers, more genomic alterations accumulated especially cell cycle regulatory gene variants (45.4% vs 31.6%,  $P < 0.001$ ) were observed in metastatic tumors. The most common mutation site of *KRAS* is p.G12D (43.6%) in pancreatic cancer. Patients with *KRAS* mutations were significantly associated with older age and mutations in the other three driver genes, while *KRAS* wild-type patients contained more fusion mutations and alternative mechanisms of RTK/Ras/MAPK pathway including a number of clinically targetable mutations. *KRAS* mutations in Chinese cohort were significantly lower than those in Western cohorts (all  $P < 0.05$ ). A total of 252 (23.3%) patients with the core DNA damage response (DDR) gene mutations were detected. *ATM* ( $n = 59$ , 5.5%) was the most frequent mutant DDR gene in patients with pancreatic cancer from China. Patients with germline DDR gene mutations were younger ( $P = 0.018$ ), while patients with somatic DDR gene mutations were more likely to accumulate in metastatic lesions ( $P < 0.001$ ) and had higher TMB levels ( $P < 0.001$ ). In addition, patients with mutant DDR genes and patients carrying *TP53* mutation were observed mutually exclusive ( $P < 0.001$ ).

**Interpretation** We demonstrated the real-world genomic characteristics of large-scale patients with pancreatic cancer from China which may have promising implications for further clinical significance and drug development.

**Funding** The funders are listed in the Acknowledgement.

**Copyright** © 2022 The Authors. Published by Elsevier B.V. This is an open access article under the CC BY-NC-ND license (<http://creativecommons.org/licenses/by-nc-nd/4.0/>)

**Keywords:** Pancreatic ductal adenocarcinoma; genomic mutation; next-generation sequencing; *KRAS*; DNA damage response

\*Corresponding Authors: Liwei Wang, State Key Laboratory of Oncogenes and Related Genes, Shanghai Cancer Institute, Department of Oncology, Renji Hospital, School of Medicine, Shanghai Jiao Tong University, No.160, Pujian Road, Pudong District, Shanghai 200127, China. Phone: +8613761254228.

\*\*Lei Xiong, The Medical Department, 3D Medicines Inc., Shanghai 201321, China. Phone: +8618616780995.

E-mail addresses: [simon.t@3dmedcare.com](mailto:simon.t@3dmedcare.com) (L. Xiong), [liweiwang@shsmu.edu.cn](mailto:liweiwang@shsmu.edu.cn) (L. Wang).

<sup>1</sup> These authors contributed equally to this work.

eBioMedicine 2022;77:  
103897  
Published online xxx  
<https://doi.org/10.1016/j.ebiom.2022.103897>

### Research in context

#### *Evidence before this study*

Effective targets for anticancer therapy confirmed in pancreatic cancer are limited. Most current investigations about genetic characteristics of pancreatic cancer are based on Caucasian populations. However, the characteristics of genomics have not been fully elucidated in large-scale patients with pancreatic cancer from China.

#### *Added value of this study*

We retrospectively analyzed the characteristics of genomics from 1080 Chinese patients with pancreatic cancer detected by NGS and found recurrent somatic mutations in *KRAS* (83.2%), *TP53* (70.6%), *CDKN2A* (28.8%), *SMAD4* (23.0%), *ARID1A* (12.8%) and *CDKN2B* (8.9%), among others. Different lesion locations, *KRAS* status and population cohorts of pancreatic cancers were shown different genomic characteristics. A total of 252 (23.3%) patients with the core DDR gene mutations were detected. *ATM* ( $n = 59$ , 5.5%) was the most frequent DDR mutant gene in patients with pancreatic cancer from China. Patients with somatic and germline DDR gene mutations had different clinicopathological and molecular characteristics.

#### *Implications of all the available evidence*

This study comprehensively reported the real-world genomic characteristics of large-scale patients with pancreatic cancer by clinical sequencing from China which is conducive to identify potentially targetable and predictive biomarkers, screen exceptional genetic subtypes in respond to specific treatment, and explore the clinical practice and novel agent development for patients with pancreatic cancer.

### Introduction

Pancreatic ductal adenocarcinoma (PDAC) is one of the most lethal malignant tumors with a 5-year overall survival (OS) rate of less than 10%.<sup>1</sup> Pancreatic cancer is the sixth leading cause of cancer death in China,<sup>2</sup> and its incidence rate has rapidly increased worldwide over the last decade.<sup>3</sup> Although nab-paclitaxel plus gemcitabine<sup>4</sup> and the FOLFIRINOX<sup>5</sup> chemotherapy regimens have been shown a significant survival benefit for pancreatic cancer patients, developing treatments with greater efficacy remains challenging. Genetic heterogeneity is common in patients with pancreatic cancer.<sup>6</sup> Therefore, it is a fundamental problem to optimize anticancer treatment selection according to genetic variations.<sup>7</sup>

In the era of precision medicine, comprehensive genomic profiling of malignant tumor specimens has identified potential targets for therapeutic intervention.

As a result, the combination of genetic testing and targeted therapy has enabled significant achievements in the treatment of lung cancer<sup>8</sup> and breast cancer.<sup>9</sup> However, few effective targets for anticancer therapy have been confirmed in PDAC. Genomic alterations of *KRAS*, *TP53*, *CDKN2A* and *SMAD4* have been widely reported as pancreatic cancer driver genes that are associated with PDAC patients' outcomes; however, few of these genes has been clinically directly targeted through the current therapeutic regimens.<sup>10</sup> DNA damage response (DDR) deficiency is a hallmark of PDAC, which contains at least 200 related genes with different functional pathways.<sup>11–13</sup> Prior studies demonstrated that germline DDR alteration carriers with PDAC had a significantly longer overall survival (OS) than noncarriers.<sup>14,15</sup> The genes of BRCA family are thought to predict preferentially sensitive to platinum-based chemotherapy or PARP inhibition.<sup>16–18</sup> A comprehensive understanding of the genetic characteristics and molecularly guided therapy have proved to a substantial impact on survival in patients with pancreatic cancer.<sup>19–21</sup> Recently, studies have reported the genomic characteristics of Chinese pancreatic cancer patients, however, lack of blood paired germline or based on small cases, which is difficult to reflect the real-world genomic characteristics of pancreatic cancer from China.<sup>22,23</sup>

To determine the significant role played by genomics, we investigated 1080 patients with pancreatic cancer from China using panel-based next-generation sequencing (NGS) to explore the real-world genomic alterations and evaluate the potential clinical significance.

### Methods

#### Patients and specimens

All participants provided written informed consent. The study protocol was reviewed and approved by the Ethics Committee of Shanghai Jiao Tong University School of Medicine Affiliated Renji Hospital (protocol No.2016089). Patients with pathologically diagnosed, anti-tumor therapy-naive, primary PDAC who were enrolled between January 2017 to August 2020. Both blood and formalin-fixed, paraffin-embedded (FFPE) tissue samples ( $n = 1080$ ) were collected from each patient. The genes contained in our NGS panels were listed (381-gene panel and 733-gene panel) in Supplementary Table 1-2. All FFPE samples forwarded for DNA extraction contained at least 20% tumor nuclei. Genomic profiling was performed in a Clinical Laboratory Improvement Amendments–certified and College of American Pathologists–accredited laboratory (3D Medicines, Inc., Shanghai, China).

### Tissue processing, DNA extractions, targeted sequencing and data processing

DNA extraction and sequencing were performed as previously described with some modifications.<sup>24</sup> Genomic DNA was isolated from tissue samples using the ReliaPrep™ FFPE gDNA Miniprep System (Promega) and quantified using the Qubit™ dsDNA HS Assay Kit (Thermo Fisher Scientific). DNA extracts (30–200ng) were sheared into 250-bp fragments using an S220 focused-ultrasonicator (Covaris). Libraries were prepared using the KAPA Hyper Prep Kit (KAPA Biosystems).

For targeted capture of genomic regions, indexed libraries were subjected to probe-based hybridization with a customized NGS panel targeting 381 or 733 cancer-related genes, where the probe baits were individually synthesized, 5'biotinylated, 120-bp DNA oligonucleotides (IDT), and repetitive elements were filtered out from intronic baits according to the annotation provided by University of California Santa Cruz (UCSC) Genome RepeatMasker.

The captured libraries were loaded onto a NovaSeq 6000 platform (Illumina) for 100-bp paired-end sequencing with a mean sequencing depth of 500×. Raw data of tissue samples were mapped to the reference human genome hg19 using the Burrows-Wheeler Aligner (v0.7.12). Variant calling was performed only in the targeted regions. Somatic single nucleotide variants (SNVs) were detected using MuTect (v1.1.7) (<https://github.com/broadinstitute/mutect>), and somatic insertions and deletions (indels) were detected using Pindel (v0.2.5a8) (<http://gmt.genome.wustl.edu/packages/pindel>) with default parameters. Copy number variations (CNVs) were called by an in-house developed script with a cutoff of 6 copies. Gene rearrangements were identified by analyzing the clipped reads that could be extracted by the tag information of bam files mapped by bwa software. Single-nucleotide polymorphisms (SNPs) and indels were annotated by ANNOVAR against the following databases: dbSNP (v138) (<https://www.ncbi.nlm.nih.gov/snp/>), 1000 Genomes (<https://www.ncbi.nlm.nih.gov/variation/tools/1000genomes/>), and ESP6500 (population frequency > 0.015) (<https://evs.gs.washington.edu/EVS/>). Only missense, stopgain, frameshift, nonframeshift, and splicing were retained. The human sequence data generated in this study were not publicly available due to China human genetic resources law and patient privacy requirements, but were available upon reasonable request from the corresponding authors.

### Categorization of genomic alterations

Genomic alterations were categorized based on published literature.<sup>21,25</sup> Aberrant signaling pathways and genes with alterations were listed in Supplementary Table 3. In keeping with recent references, the core DDR genes ( $n = 21$ ) including *ATM*, *ATR*, *ATRXL*,

*BARD1*, *BLM*, *BRCA1*, *BRCA2*, *CHEK2*, *ERCC1*, *FANCA*, *FANCD2*, *MLH1*, *MSH2*, *MSH6*, *MUTYH*, *PALB2*, *POLE*, *PMS2*, *RAD50*, *RAD51*, and *SMARCA4* involved in this study, which were contained in our NGS panels.<sup>11–13</sup>

### The public pancreatic cancer dataset

The Cancer Genome Atlas (TCGA) 186 pancreatic cancer somatic mutations were downloaded from [https://cbioportal-datahub.s3.amazonaws.com/paad\\_tcga.tar.gz](https://cbioportal-datahub.s3.amazonaws.com/paad_tcga.tar.gz). 150 patients with primary pancreatic cancer were included in the study. International Cancer Genome Consortium (ICGC) 99 pancreatic cancer somatic mutations were downloaded from [https://cbioportal-datahub.s3.amazonaws.com/paad\\_icgc.tar.gz](https://cbioportal-datahub.s3.amazonaws.com/paad_icgc.tar.gz). University of Texas Southwestern Medical Center (UTSW) 109 pancreatic cancer somatic mutations were downloaded from [https://cbioportal-datahub.s3.amazonaws.com/paad\\_utswh\\_2015.tar.gz](https://cbioportal-datahub.s3.amazonaws.com/paad_utswh_2015.tar.gz). Queensland Centre for Medical Genomics (QCMG) 456 pancreatic cancer somatic mutations were downloaded from [https://cbioportal-datahub.s3.amazonaws.com/paad\\_qcmg\\_uq\\_2016.tar.gz](https://cbioportal-datahub.s3.amazonaws.com/paad_qcmg_uq_2016.tar.gz). 283 patients with tumor histologic subtype PDAC and sample type primary were included in the study. CNV in all the dataset was excluded in the comparative studies between our cohort and the public cohort.

### Tumor mutational burden (TMB) analysis

TMB was defined as somatic mutation counts in coding regions per megabase (mut/Mb) of genome examined. Although this study was based on panels with different cancer gene numbers, the method used to calculate TMB was the same. SNVs included both synonymous and nonsynonymous mutations, as well as stopgain, stoploss, and splicing variants. Indel variants included both frameshift or nonframeshift insertions and deletions. Noncoding alterations were not counted.

### Microsatellite instability (MSI) analysis

The MSI phenotype detection method is a read count distribution-based approach. An in-house developed R script was employed to evaluate the distribution of read counts among various repeat lengths for each microsatellite locus of each sample.<sup>26</sup> An MSI score was defined as the percentage of unstable loci. Any sample with an MSI score of  $\geq 0.4$  was classified as MSI-high, and samples were otherwise classified as microsatellite stability (MSS).

### Statistical analyses

For normally distributed continuous variables, Student's t-test was utilized to determine the differences between two groups; otherwise, the Mann-Whitney U test was utilized. Fisher's exact test or the chi-square

test was employed to identify the association of two categorical variables. All reported *P* values were two-tailed, and *P* < 0.05 was considered to be significant unless otherwise specified. All the analyses were performed by using GraphPad Prism 8.0 (GraphPad Software, USA) and R software (version 3.6.0, <https://cran.r-project.org>).

### Role of funders

The funders had no role in the study design, data collection and analysis, decision to publish, or preparation of the manuscript.

## Results

### Characteristics of the study population

In this study, tumor tissues and matched blood samples were obtained from a total of 1080 patients with pathologically diagnosed PDAC (Table 1). Briefly, 58.0% (626/1080) of the patients were male, and the median age was 60 (range, 20–87). The median TMB level was 4.03 (range, 0–1124) in 1051 patients. Only 6 of 1051 (0.6%) patients were confirmed to have MSI-high status. A total of 754 (69.8%) samples originated from the primary pancreas. The remaining 326 (30.2%) samples represented distant metastases obtained from the liver

(*n* = 227), peritoneum (*n* = 28), lymph nodes (*n* = 16), lung (*n* = 4) and other sites (*n* = 50).

### Molecular landscape of somatic genomic alterations in PDAC

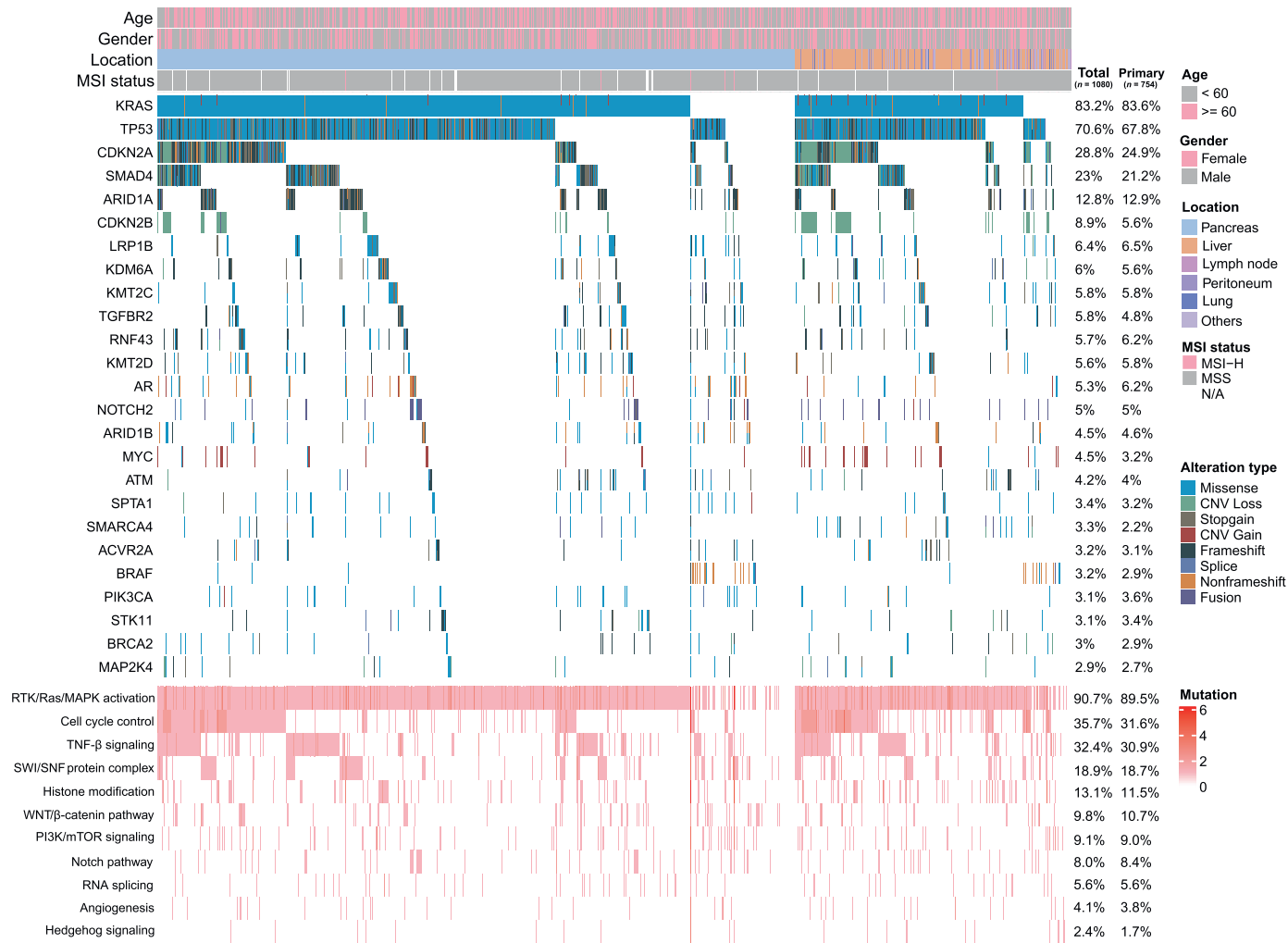
Among the 1080 pancreatic cancer patients, 8329 genomic alterations were identified in 652 genes. The most common mutational type was missense (62.3%) followed by frameshift (9.3%) and truncation (9.0%). A total of 598 (55.4%) patients were evaluated by 381-gene NGS panel, and 3432 genomic alterations were detected in 279 genes. Similarly, 482 (44.6%) patients were tested by 733-gene NGS panel, and 4897 genomic alterations were detected in 638 genes. *KRAS* was clearly the most frequently occurring somatic mutation in PDAC patients and the prevalence of this mutation was 83.2% (*n* = 899, Figure 1). Other genomic changes involved in decreasing order, *TP53* (70.6%), *CDKN2A* (28.8%), *SMAD4* (23.0%), *ARID1A* (12.8%) and *CDKN2B* (8.9%), among others. The key signaling pathways altered in PDAC were also demonstrated, 90.7% (*n* = 980) of PDAC patients had genomic alterations in the RTK/Ras/MAPK signaling pathway followed by cell cycle control (35.7%) and TGF- $\beta$  signaling pathway (32.4%).

The genomic changes associated with available clinicopathological data for 1080 samples were summarized in Table 2. Older patients (> 60 years old) with PDAC were significantly more likely to exhibit *KRAS* mutations (*P* = 0.003 [two-sided Fisher's exact test]). Female patients with PDAC more often exhibited genomic alterations in *CDKN2B* and *AR*. A comparison of primary and metastatic PDAC showed that *TP53*, *CDKN2A*, *SMAD4*, *MYC* and *CDKN2B* gene alterations were likely to be observed in metastases (all *P* < 0.05 [two-sided Fisher's exact test]). There were no significant differences in *KRAS* mutations (83.6% vs 82.5%, *P* = 0.741 [two-sided Fisher's exact test]) between primary and metastatic tumors. A subgroup analysis by metastatic location demonstrated that liver metastases more frequently harbored alterations in *KRAS*, *TP53*, *CDKN2A* and *CDKN2B* (all *P* < 0.05 [two-sided Fisher's exact test]). *GNAS* gene mutations were likely to be observed in other metastatic sites. To further confirm the difference of molecular characteristics between primary and metastatic tumors, we found *CDKN2A* and *CDKN2B* harbored higher mutation frequencies in metastases than in primary after false discovery rate (FDR) correction (FDR < 0.05 [two-sided Fisher's exact test], Figure 2a). In the metastatic subgroup, liver metastasis with *CDKN2A* mutations were more frequent than those of the other metastatic lesions (FDR < 0.05 [two-sided Fisher's exact test], Figure 2b). Then, compared with primary tumors, we illustrated mutational types of representative differential genes and found *CDKN2A*, *SMAD4* and *CDKN2B* contained much more CNV loss,

Features	Total (%)
No. of Patients	1080
Age	
Median (Range)	60 (20-87)
<=60	546 (50.6%)
>60	534 (49.4%)
Gender	
Male	626 (58.0%)
Female	454 (42.0%)
TMB Level	
Median (Range)	4.03 (0-1124)
No information	29 (2.7%)
MSI Status	
MSI-H	6 (0.6%)
MSS	1045 (96.8%)
No information	29 (2.7%)
Sample Location	
Pancreas	754 (69.8%)
Distant metastasis	326 (30.2%)
Liver	228 (21.1%)
Peritoneum	28 (2.6%)
Lymph node	16 (1.5%)
Lung	4 (0.4%)
Others	50 (4.6%)

**Table 1: Clinicopathologic characteristics in PDACs.**

Abbreviations: PDAC, pancreatic ductal adenocarcinoma



**Figure 1.** Summary of the common prevalent genomic alterations and signaling pathways in 1080 Chinese PDAC patients. Genomic alterations include missense, nonframeshift, fusion, stopgain, splice, and copy number variations (CNV) gain or loss. The majority of pathways altered in PDAC contain RTK/Ras/MAPK activation, cell cycle control, TGF- $\beta$  signaling, histone modification, SWI/SNF complex, PI3K/mTOR signaling, WNT/ $\beta$ -catenin pathway, RNA splicing, Notch pathway, angiogenesis, and Hedgehog signaling. The mutational frequencies of total samples and primary lesion samples were listed. Germline mutations are not performed.

Clinicopathologic features	n (%) vs. n (%)	p
Age ≤ 60 vs age > 60		
<i>KRAS</i>	436 (80) vs 463 (87)	0.003
Female vs male		
<i>CDKN2B</i>	53 (12) vs 43 (7)	0.009
<i>AR</i>	40 (9) vs 17 (3)	<0.001
Primary vs metastasis		
<i>TP53</i>	511 (68) vs 252 (77)	0.002
<i>CDKN2A</i>	188 (25) vs 123 (38)	<0.001
<i>SMAD4</i>	160 (21) vs 88(27)	0.046
<i>MYC</i>	24 (3) vs 25 (8)	0.002
<i>CDKN2B</i>	42 (6) vs 54 (17)	<0.001
<i>SMARCA4</i>	17 (2) vs 19 (6)	0.005
<i>FGFR1</i>	14 (2) vs 16 (5)	0.009
<i>KMT2C</i>	36 (5) vs 27 (8)	0.034
Liver vs other metastatic sites		
<i>KRAS</i>	196 (86) vs 73 (74)	0.009
<i>TP53</i>	186 (82) vs 66 (67)	0.004
<i>CDKN2A</i>	103 (45) vs 20 (20)	<0.001
<i>CDKN2B</i>	50 (22) vs 4 (4)	<0.001
<i>GNAS</i>	4 (2) vs 7 (7)	0.021

**Table 2: Clinicopathologic characteristics related to genomic alterations.**

while *TP53*, *KMT2C* and *SMARCA4* accumulated much more missense in metastases (Figure 2c). Metastatic PDAC patients were also observed significantly harbored cell signaling control pathway (45.4% vs 31.6%,  $P < 0.001$  [two-sided Fisher's exact test], Figure 1) and carried significantly higher TMB level ( $P < 0.001$  [Mann-Whitney U test], Figure 2d) than those in patients with primary tumors. We also analyzed the prevalence of CNV alterations in our cohort and found *MYC* ( $n=44$ , 4.1%) was most common gene with CNV gain, following by *FGFR1* ( $n=23$ , 2.1%), *AKT2* ( $n=20$ , 1.9%) and *KRAS* ( $n=20$ , 1.9%), among others. However, the genes with the most frequent CNV loss were *CDKN2B* ( $n=95$ , 8.8%), *CDKN2A* ( $n=91$ , 8.4%) and *SMAD4* ( $n=42$ , 3.9%), respectively (Supplementary Figure).

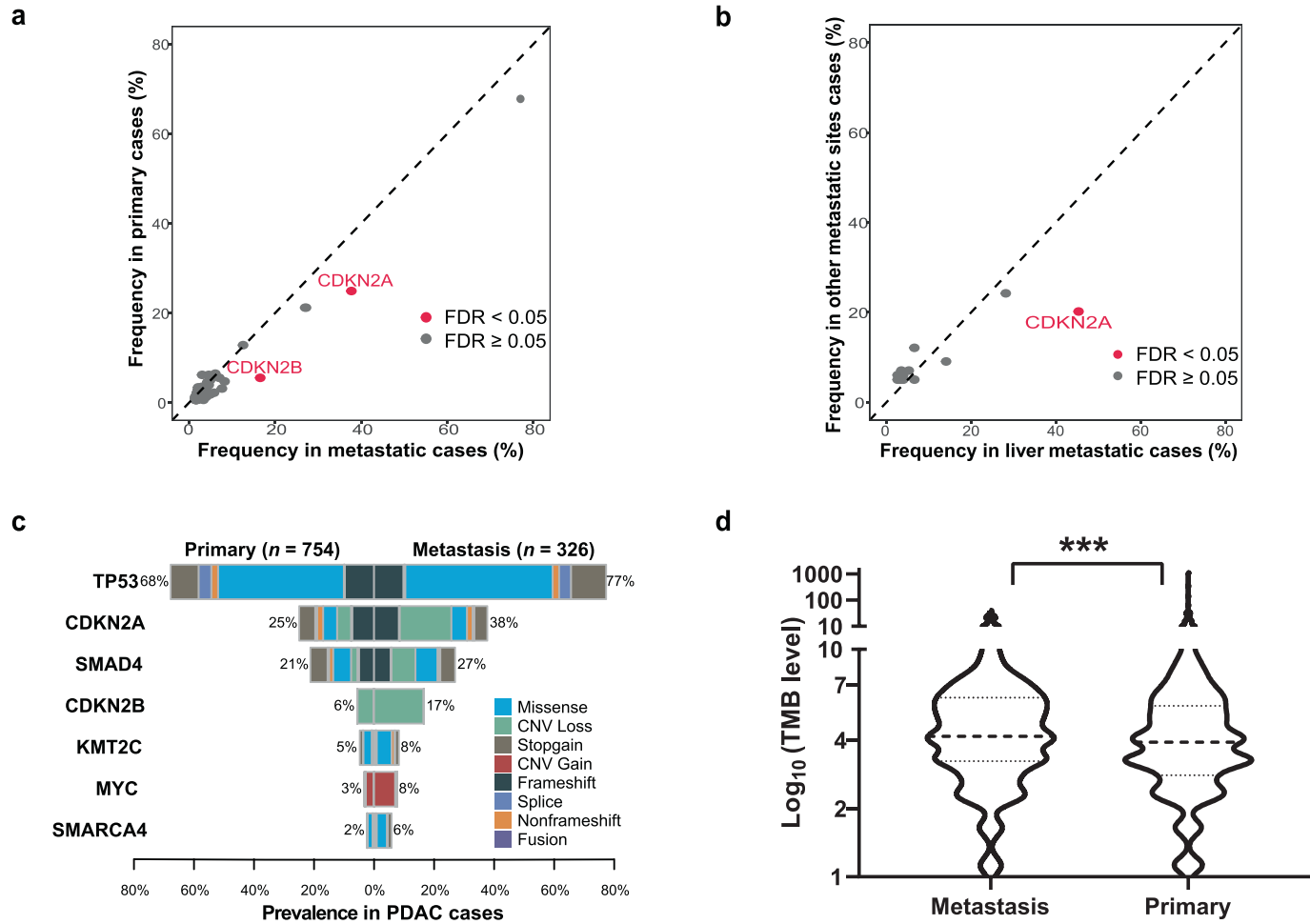
In the analysis of *KRAS* mutation sites, the most frequently observed alterations occurred on codon 12 of exon 2. These mutations included p.G12D (43.6%), p.G12V (30.1%), p.G12R (11.6%), p.Q61H (5.0%), p.G12C (2.6%) and CNV gain (2.2%). Other rare (<1%) point mutation sites could be also detected (Figure 3a). In Chinese population of PDAC patients, *KRAS* alterations were absent in 181 of 1080 (16.8%) cases. *KRAS* wild-type patients were significantly younger than those of *KRAS* mutant status (56.7 vs 60.6 years old,  $P < 0.001$  [Student's t-test]). We found that patients with *KRAS* mutations were significantly associated with mutations in the other three driver genes, namely, *TP53* (77.3% versus 37.6%), *CDKN2A* (31.8% versus 13.8%) and *SMAD4* (25.5% versus 10.5%) (all  $FDR < 0.05$  [two-sided Fisher's

exact test], Figure 3b). However, *KRAS* wild-type patients were significantly associated with *BRAF* (0.4% versus 17.1%), *CTNNB1* (1.2% versus 9.4%), *ERBB2* (0.9% versus 7.2%) and *TSC2* (1.0% versus 5.0%) mutations (all  $FDR < 0.05$  [two-sided Fisher's exact test]). While *BRAF* mutations were the most prevalent mutations in the *KRAS* wild-type cohort, merely 4 of 899 (0.4%) *KRAS*-mutant samples had mutations in *BRAF*. Similarly, as alternative mechanisms of RTK/Ras/MAPK pathway, *ERBB2*, *MET*, *KIT*, *RET*, *NTRK1*, *ERBB3*, *FGFR4*, *EGFR*, *FGFR2*, *RAF1*, *ROS1*, *GNAS*, and *ALK* alterations were more likely to be observed in the *KRAS* wild-type cohort (Figure 3c). We also detected 124 genomic fusion alterations from 110 (10.2%) patients. Various fusion genes involving *NOTCH2*, *BRAF*, *RET*, *ERBB2*, *KMT2C*, *RAF1*, *ALK*, *FGFR1* and *EGFR* were identified in 26 (14.4%) *KRAS* wild-type pancreatic cancer patients, significantly higher than those in the patients with *KRAS* mutations (9.3%,  $P = 0.042$  [Two-sided Chi-square]).

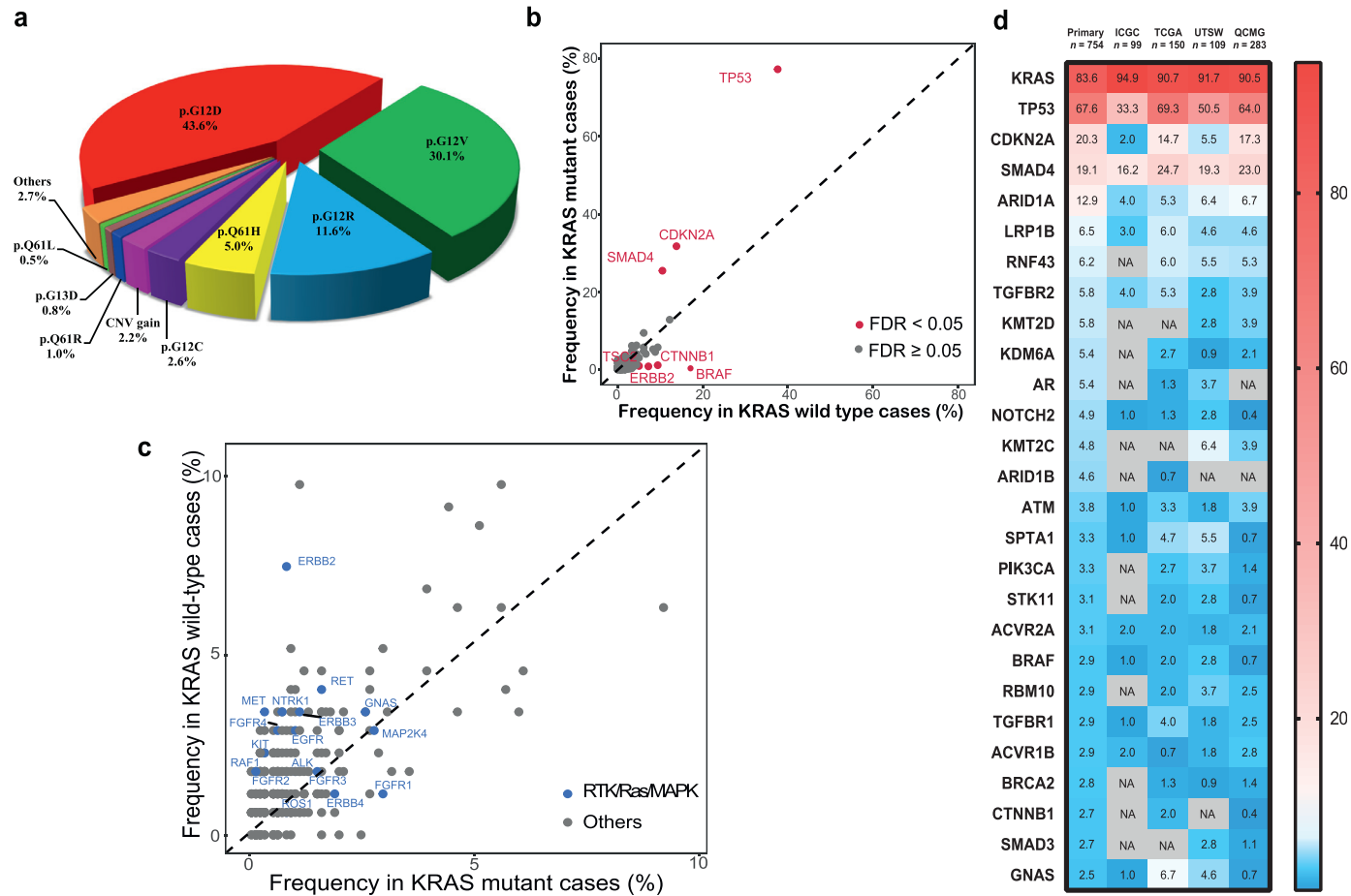
To further explore the differences in the mutational features between Chinese patients and Western patients, we compared our cohort (only primary without CNV alterations,  $n = 754$ ) with public available database from the International Cancer Genome Consortium (ICGC,  $n = 99$ ), the Cancer Genome Atlas (TCGA,  $n = 150$ ), the University of Texas Southwestern Medical Center (UTSW,  $n = 109$ ) and the Queensland Centre for Medical Genomics (QCMG,  $n = 283$ ). We observed *KRAS* status as the most frequently occurring genomic mutation in our primary PDAC patients (83.6%) had significantly lower mutation frequency than that in all western cohorts (ICGC, 94.9%; TCGA, 90.7%; UTSW, 91.7%; QCMG, 90.5%; all  $P < 0.05$  [two-sided Fisher's exact test], Figure 3d). While *ARID1A*, *KDM6A*, *BRCA2* and *ARID1B* in our Chinese cohort were observed higher mutation rate than those in all western cohorts, although not all comparison reached statistical significance.

#### Characteristics of somatic and germline DDR gene mutations in Chinese PDAC patients

Our previous work comprehensively revealed the characteristics of DDR deficiency in patients with pancreatic cancer.<sup>27</sup> Here, we evaluated somatic and germline mutations in 21 core DDR genes covered by our NGS panels. We found 252 (23.3%) PDAC patients were accompanied by the core DDR gene mutations. All core DDR mutant genes were displayed in Figure 4a. The most frequently mutated DDR gene in Chinese PDAC patients was *ATM* ( $n = 59$ , 5.5%). The additional DDR deficiency were commonly seen in *BRCA2* (4.5%), *SMARCA4* (3.4%), *ATR* (1.8%), *FANCA* (1.4%), *PALB2* (1.3%), and *ATR* (1.2%), among others. Interestingly, 7 patients with *ATM*, 4 patients with *BRCA2* and 2 patients with *PALB2*, respectively had both somatic and germline mutations.

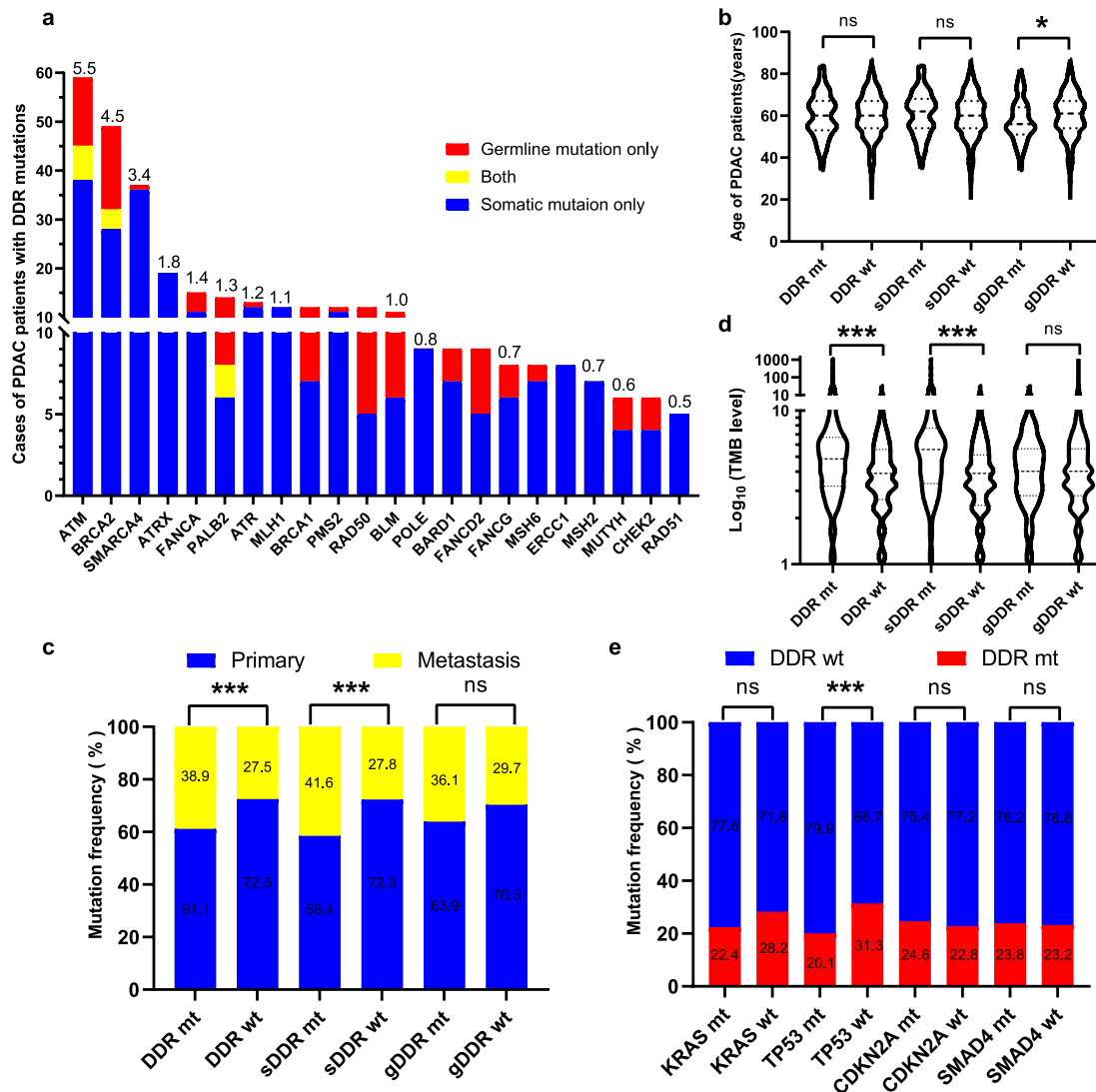


**Figure 2.** Molecular characteristics depended on tumor location in Chinese PDAC patients. a. Molecular differences between primary and metastatic PDAC tumors. False-discovery-rate (FDR) correction was used to adjust for multiple comparisons. Each dot represents one gene and red dots represent FDR < 0.05, two-sided Fisher's exact test. b. Molecular differences between liver metastasis and other site metastatic PDAC tumors. c. Comparison of representative differential genes' mutational types between primary and metastatic tumors. d. Violin plots of TMB in the corresponding clinical subgroups of primary and metastatic PDAC tumors (n = 1051). The outline of the violins shows the mirrored kernel density, with the black dotted line indicating the median and quartile. Statistical comparisons were performed using Mann-Whitney U test. \*\*\*P < 0.001. Germline mutations are not included.



**Figure 3.** *KRAS* status and genetic comparison with Western populations in Chinese PDAC patients. a. The frequency of *KRAS* mutational type in PDAC patients. b. Comparison of alternative driver genes depended on PDAC patients with *KRAS* status. FDR correction was used to adjust for multiple comparisons. Each dot represents one gene and red dots represent FDR < 0.05, two-sided Fisher's exact test. c. Comparison of RTK/Ras/MAPK pathway related genes depended on PDAC patients with *KRAS* status. Each dot represents one gene and blue dots represent targetable genes. d. Heatmap showing the frequency comparison of somatic mutant genes without copy number variation (CNV) among Chinese primary patients (*n* = 754) and the Western cohorts from International Cancer Genome Consortium (ICGC, *n* = 99), The Cancer Genome Atlas (TCGA, *n* = 150), University of Texas Southwestern Medical Center (UTSW, *n* = 109), and Queensland Centre for Medical Genomics (QCMG, *n* = 283). Germline mutations are not performed. The genes are listed in the order of mutation frequency in our cohort. The gradient color from red to blue represents the mutation frequency from high to low. NA. denotes not detected.





**Figure 4.** The core DDR genes with somatic and germline mutations in Chinese PDAC patients. **a.** The number of patients with the core DDR gene mutations in our cohort. Red bar represents germline DDR mutation only, blue bar represents somatic DDR mutation only, and yellow bar represents both. The mutational frequency of each gene is above bar. **b.** Violin plots compared the relationship between DDR status, somatic DDR status and germline DDR status and the age of the corresponding patients. The outline of the violins shows the mirrored kernel density, with the black dotted line indicating the median and quartile. Statistical comparisons were performed using Student's t-test. NS, not significant; \* $P < 0.05$ . **c.** Comparison of DDR status, somatic DDR status and germline DDR status with primary and metastatic PDAC tumors. Mutational frequencies of primary and metastasis were listed. Statistical comparisons were performed using two-sided Fisher's exact test. NS, not significant; \*\*\* $P < 0.001$ . **d.** Violin plots compared the relationship between DDR status, somatic DDR status and germline DDR status and TMB level of the corresponding patients ( $n = 1051$ ). The outline of the violins shows the mirrored kernel density, with the black dotted line indicating the median and quartile. Statistical comparisons were performed using Mann-Whitney U test. NS, not significant; \*\*\* $P < 0.001$ . **e.** Comparison of DDR status with 4 driver genes in Chinese PDAC patients. Mutational frequencies of primary and metastasis were listed. Statistical comparisons were performed using two-sided Fisher's exact test. NS, not significant; \*\*\* $P < 0.001$ .

In our cohort, patients with germline DDR gene mutations were significantly younger than those with germline DDR wild-type (57.3 vs 60.2 years old,  $P = 0.018$  [Student's t-test]), but no such phenomenon was observed in patients with total DDR gene mutations

and somatic DDR gene mutations (Figure 4b). Next, we investigated the correlations between DDR gene mutations and tumor location. We found patients with total DDR gene mutations (38.9% vs 27.5%,  $P < 0.001$  [two-sided Fisher's exact test]) and somatic DDR gene

mutations (41.6% vs 27.8%,  $P < 0.001$  [two-sided Fisher's exact test]) were significantly higher than their wild-type patients in metastatic lesions, while there was no significant difference between patients with germline DDR gene mutations ( $P = 0.22$  [two-sided Fisher's exact test]) and lesion location (Figure 4c). We further examined the underlying relationship between DDR gene mutations and TMB level. Patients with total DDR gene mutations ( $P < 0.001$  [Mann-Whitney U test]), especially with somatic DDR mutations ( $P < 0.001$  [Mann-Whitney U test]) had a significantly higher TMB level than did patients with wild-type DDR genes, respectively (Figure 4d). Furthermore, we analyzed the association between the core DDR gene mutations and 4 PDAC driver genes. We observed patients with DDR genes were only significantly associated with *TP53* ( $P < 0.001$  [two-sided Fisher's exact test]) and were mutually exclusive (Figure 4e).

## Discussion

This study was demonstrated the real-world genomic characteristics in pancreatic cancer based on large-scale patients from China. Every clinical participant provided both tumor specimens and matched blood samples as controls, which were collected and tested for NGS profiles containing exons of 381 or 733 cancer-related genes. In addition, adequate neoplastic cellularity, high-quality DNA and reasonable sequencing depth were strictly implemented for each sample and reliable results could be obtained.

Oncogenic *KRAS* alteration is the major molecular event in PDAC patients, leading to permanent activation of the *KRAS* protein, which functions as a genetic switch to activate various cellular signaling pathways and transcription factors, thereby inducing proliferation, invasion, migration and survival.<sup>28</sup> In our study, we demonstrated that *KRAS* mutations were more likely to occur in older patients which was consistent with previous reports.<sup>25,29</sup> No difference in *KRAS* mutation between primary and metastatic lesions was seen; however, this mutation was detected more frequently in liver metastases than in other metastatic sites. Meanwhile, *KRAS* mutation was significantly closely linked to three tumor suppressor genes, *TP53*, *CDKN2A* and *SMAD4*. Mutational accumulation of these four main driver genes not only represent the specific molecular characteristics of PDAC, but also associate with poor prognosis.<sup>10</sup> Furthermore, various *KRAS* mutational subtypes were demonstrated in our Chinese cohort. p.G12D, as the most prevalent *KRAS*-activating mutational subtype, accounted for 43.6%, which was consistent with the mutation frequency reported in previous study.<sup>28</sup> However, it was demonstrated that p.G12D mutant patients with PDAC had a significantly shorter overall survival compared to p.G12V, p.G12R or wild-type patients.<sup>29</sup> *KRAS* has been considered an undruggable molecule

and exhibits escape mechanisms when *KRAS* is inactivated. Sotorasib (AMG510), a specific and irreversible small-molecule inhibitor targeting *KRAS* p.G12C mutation, showed encouraging anticancer activity, not only in non-small-cell lung cancer (NSCLC)<sup>30</sup> but also in other solid tumors, including pancreatic tumors harboring the *KRAS* p.G12C alteration.<sup>31</sup> Another promising study showed that PDAC patients with the *KRAS* p.G12R mutation had distinct drug sensitivity.<sup>32</sup> In our cohort, 2.6% and 11.9% PDAC cases presented *KRAS* p.G12C and p.G12R mutations, respectively, and seemed to benefit more from these novel specific therapeutic strategies. However, the majority of *KRAS* alterations in PDACs are *KRAS* p.G12D, p.G12V, and rare mutational sites have not been determined to have a definite therapeutic response. Blocking *KRAS* downstream pathway seems to be a feasible treatment strategy. MEK inhibitors have been identified as a potential option for targeting *KRAS* to inhibit the RAF–MEK–ERK signaling pathway located downstream of *KRAS*. A recent study showed that the combination of MEK or ERK inhibitor and autophagy inhibitor led to tumor regression in PDAC patients.<sup>33,34</sup> We believe that the proper population of *KRAS* mutant patients who benefit from various novel therapeutic strategies may be selected, and new anti-*KRAS* agents may also be designed and developed in the future.

In our Chinese PDAC patients, the proportion of *KRAS* wild-type patients accounted for 16.8%, which is considerably higher than that of Western population-based reports. *KRAS* wild-type patients were previously recognized as having a good prognosis, exhibiting a 9-month survival without treatment.<sup>28</sup> Interestingly, *KRAS* wild-type patients were significantly accompanied by alterations in *BRAF*, *CTNNB1*, *ERBB2*, *MET*, *KIT*, *NTRK1* and *FGFR4*, which may be primarily related to the activation of the RTK/Ras/MAPK pathway. It was reported that oncogenic *BRAF* deletions served as potential driver alterations in *KRAS* wild-type PDACs that responded to the MEK inhibitor.<sup>35</sup> Further observation has shown that there is a tendency for other potentially targetable molecular alterations, such as *ERBB2*, *MET*, *KIT*, *RET*, *NTRK1*, *ERBB3*, *FGFR4*, *EGFR*, *FGFR2*, *RAF1*, *ROS1*, *GNAS*, and *ALK*, in *KRAS* wild-type PDAC patients to be involved in the other actionable alterations. Nimotuzumab, an EGFR inhibitor, in combination with gemcitabine for the first-line regimen showed a significant survival improvement, increasing survival by 6 months in the *KRAS* wild-type subgroup with advanced PDAC.<sup>36</sup> According to the characteristics of high wild-type *KRAS* in Chinese pancreatic cancer patients, it appears that a considerable number of patients may benefit from the regimen containing anti-EGFR therapy. Meanwhile, PDAC patients with wild-type *KRAS* are closely related to other potentially actionable genomic alterations associated with the RTK/RAS/MAPK pathway and specific targetable

inhibitors. A number of potential targetable therapeutic strategies need to be carefully designed and evaluated in clinical practice.

In this study, we integrated and analyzed somatic and germline mutations in 21 core DDR genes which were suitable for patients with pancreatic cancer from China and were more convenient and economical for clinical large-scale detection. We observed that 23.3% patients had DDR gene mutations and *ATM* was the most common DDR mutant gene in Chinese PDAC patients. Patients with germline DDR gene mutation were younger, while patients with somatic DDR mutation were more likely to accumulate in metastatic lesions and had higher TMB levels which was consistent with previous reports.<sup>25,37,38</sup> Our core DDR genes could screen part of PDAC population with genetic instability. Detecting more DDR genes can indeed screen a higher proportion of patients with DDR gene mutations,<sup>39</sup> but its clinical value needs to be further evaluated. Integrating genomic scars and signature assessment by whole genome sequencing (WGS) and DDR deficiency seems to be more helpful to screen the proper population who benefit from PARP inhibitor or other DNA damaging agents.<sup>39–41</sup> In addition, patients with *TP53* mutation accounted for 70.6% of the total population, while *TP53* mutation and DDR gene mutations are mutually exclusive. *TP53* is one of the important effector genes of the DDR pathway which should be paid more attention to further study.<sup>11,12</sup> WEE1 inhibitor, a specific DDR inhibitor was reported to trigger synthetic lethality in the absence of *TP53* and enhance chemotherapy cytotoxicity which combined with other targeted agents or immunotherapy may have a promising future in patients with pancreatic cancer.<sup>42,43</sup> Furthermore, patients with DDR gene mutations, especially somatic mutations, are associated with higher TMB level which may predict the efficacy of immunotherapy. This is reported in various tumors,<sup>44–47</sup> however, further clinical exploration for DDR mutant subtype is needed in pancreatic cancer.

There are also several limitations in this study. First, this study is a retrospective study that may suffer from selection bias (e.g., different gene-panels, TMB testing, MSI testing); however, the collection and detection of all samples were in real-time and quality control satisfied. Moreover, although our panel-based NGS analysis involved most of the vital genes in PDAC, some potentially valuable genes may have been overlooked. Combined and comprehensive whole-genome, transcriptome, and proteome multi-omic analyses need to be undertaken. Furthermore, therapeutic profiling and prognosis information matching genomics are limited, and well-designed clinical trials should be conducted in the future.

In summary, this study revealed the characteristics of genomic profiling by clinical sequencing in real-world large-scale patients with PDAC from China. We hope that our findings are conducive to identify potentially targetable and predictive biomarkers, screen

exceptional genetic subtypes in respond to specific treatment, and explore the clinical practice and novel agent development for PDAC patients.

## Declarations

### Contributors

LX and LWW designed and supervised the study. SQC, YZB, LX and LWW had verified the underlying data and had full access to all of the data in the study and take responsibility for the integrity of the data and the accuracy of the data analysis. XFZ, TBM, BZ, SQC, LX, and LWW created the study methodology. YBL, DLF, YWS, XBZ, QL, XFZ, TBM, HYX, JJC, FJ, DQC, YW, JH, QX, WYG, SML, MY, JYM, JYY, YCW, YLW, DYST and XZ acquired samples and collected clinical data. BZ, SQC, and YZB processed samples and generated experimental data. XFZ, TBM, BZ, SQC, YZB, LX, and LWW designed and conducted the statistical analysis plan. XFZ, TBM, BZ, SQC, YXW, LX, and LWW analyzed and interpreted data. XFZ wrote the manuscript. XFZ and LWW obtained funding. All authors reviewed and approved the manuscript.

### Declaration of interests

BZ, SQC, YZB and LX are employees of 3D Medicines Inc. The other authors declare that they have no conflict of interests.

### Acknowledgements

We owe thanks to the patients in our study and their family members. This work was supported by a senior investigator LWW's fundings from Innovation Group Project of Shanghai Municipal Health Commission (2019CXJQ03), National Natural Science Foundation of China (81874048), Shanghai Municipal Commission of Health and Family Planning (2018ZHYL0223), Fostering Fund of Renji Hospital affiliated to Shanghai Jiao Tong University School of Medicine (PYIV-17-001), Shanghai Municipal Commission of Health and Family Planning Grant (2018ZHYL0223), Clinical Research Plan of SHDC (No. SHDC2020CR1035B), Shanghai Key Clinical Speciality (Oncology), Shanghai leading talents project, Innovative research team of high-level local universities in Shanghai. Also supported by XFZ's grant from Clinical plus Excellence Project (2020ZYA003) from Shanghai Nucleic Acid Chemistry and Nanomedicine Key Laboratory. The funders had no role in the study design, data collection and analysis, decision to publish, or preparation of the manuscript.

### Data sharing statement

The Cancer Genome Atlas (TCGA), International Cancer Genome Consortium (ICGC), University of Texas

Southwestern Medical Center (UTSW), and Queensland Centre for Medical Genomics (QCMG) studies are available at [www.cbioportal.org](http://www.cbioportal.org). Data and materials can be provided upon reasonable request to the corresponding author.

### Supplementary materials

Supplementary material associated with this article can be found in the online version at doi:[10.1016/j.ebiom.2022.103897](https://doi.org/10.1016/j.ebiom.2022.103897).

### References

- Mizrahi JD, Surana R, Valle JW, Shroff RT. Pancreatic cancer. *Lancet*. 2020;395(10242):2008–2020.
- Chen W, Zheng R, Baade PD, et al. Cancer statistics in China, 2015. *CA Cancer J Clin*. 2016;66(2):115–132.
- Siegel RL, Miller KD, Fuchs HE, Jemal A. Cancer statistics, 2020. *CA Cancer J Clin*. 2022;72(1):7–33.
- Von Hoff DD, Ervin T, Arena FP, et al. Increased survival in pancreatic cancer with nab-paclitaxel plus gemcitabine. *N Engl J Med*. 2013;369(18):1691–1703.
- Conroy T, Hammel P, Hebbar M, et al. FOLFIRINOX or gemcitabine as adjuvant therapy for pancreatic cancer. *N Engl J Med*. 2018;379(25):2395–2406.
- Makohon-Moore A, Iacobuzio-Donahue CA. Pancreatic cancer biology and genetics from an evolutionary perspective. *Nat Rev Cancer*. 2016;16(9):553–565.
- Grossberg AJ, Chu LC, Deig CR, et al. Multidisciplinary standards of care and recent progress in pancreatic ductal adenocarcinoma. *CA Cancer J Clin*. 2020;70(5):375–403.
- Hirsch FR, Suda K, Wiens J, Bunn Jr. PA. New and emerging targeted treatments in advanced non-small-cell lung cancer. *Lancet*. 2016;388(10048):1012–1024.
- Network Cancer Genome Atlas. Comprehensive molecular portraits of human breast tumours. *Nature*. 2012;490(7418):61–70.
- Qian ZR, Rubinson DA, Nowak JA, et al. Association of Alterations in Main Driver Genes With Outcomes of Patients With Resected Pancreatic Ductal Adenocarcinoma. *JAMA Oncol*. 2018;4(3):e173420.
- Pearl LH, Schierz AC, Ward SE, Al-Lazikani B, Pearl FM. Therapeutic opportunities within the DNA damage response. *Nat Rev Cancer*. 2015;15(3):166–180.
- Knijnenburg TA, Wang L, Zimmermann MT, et al. Genomic and Molecular Landscape of DNA Damage Repair Deficiency across The Cancer Genome Atlas. *Cell Rep*. 2018;23(1):239–254. .e6.
- Cancer Genome Atlas Research Network. Cancer Genome Atlas Research Network. Integrated Genomic Characterization of Pancreatic Ductal Adenocarcinoma. *Cancer Cell*. 2017;32(2):185–203. .e13.
- Yadav S, Kasi PM, Bamlet WR, et al. Effect of Germline Mutations in Homologous Recombination Repair Genes on Overall Survival of Patients with Pancreatic Adenocarcinoma. *Clin Cancer Res*. 2020;26(24):6505–6512.
- Hu H, Zhu Y, Pu N, et al. Association of Germline Variants in Human DNA Damage Repair Genes and Response to Adjuvant Chemotherapy in Resected Pancreatic Ductal Adenocarcinoma. *J Am Coll Surg*. 2020;231(5):527–535. .e14.
- Golan T, Hammel P, Reni M, et al. Maintenance olaparib for germline BRCA-mutated metastatic pancreatic cancer. *N Engl J Med*. 2019;381(4):317–327.
- Rebelatto TF, Falavigna M, Pozzari M, et al. Should platinum-based chemotherapy be preferred for germline BRCA1/2-mutated pancreatic ductal adenocarcinoma (PDAC) patients? A systematic review and meta-analysis. *Cancer Treat Rev*. 2019;80:101895.
- Wattenberg MM, Asch D, Yu S, et al. Platinum response characteristics of patients with pancreatic ductal adenocarcinoma and a germline BRCA1, BRCA2 or PALB2 mutation. *Br J Cancer*. 2020;122(3):333–339.
- Biankin AV, Waddell N, Kassahn KS, Gingras MC, Muthuswamy LB, Johns AL, et al. Pancreatic cancer genomes reveal aberrations in axon guidance pathway genes. *Nature*. 2012;491(7424):399–405.
- Waddell N, Pajic M, Patch AM, et al. Whole genomes redefine the mutational landscape of pancreatic cancer. *Nature*. 2015;518(7540):495–501.
- Bailey P, Chang DK, Nones K, et al. Genomic analyses identify molecular subtypes of pancreatic cancer. *Nature*. 2016;531(7592):47–52.
- Guo S, Shi X, Gao S, et al. The Landscape of Genetic Alterations Stratified Prognosis in Oriental Pancreatic Cancer Patients. *Front Oncol*. 2021;11:717989.
- Shui L, Li X, Peng Y, et al. The germline/somatic DNA damage repair gene mutations modulate the therapeutic response in Chinese patients with advanced pancreatic ductal adenocarcinoma. *J Transl Med*. 2021;19(1):301.
- Su D, Zhang D, Chen K, et al. High performance of targeted next generation sequencing on variance detection in clinical tumor specimens in comparison with current conventional methods. *J Exp Clin Cancer Res*. 2017;36(1):121.
- Singhi AD, George B, Greenbowe JR, et al. Real-Time Targeted Genome Profile Analysis of Pancreatic Ductal Adenocarcinomas Identifies Genetic Alterations That Might Be Targeted With Existing Drugs or Used as Biomarkers. *Gastroenterology*. 2019;156(8):2242–2253. .e4.
- Xiao J, Li W, Huang Y, et al. A next-generation sequencing-based strategy combining microsatellite instability and tumor mutation burden for comprehensive molecular diagnosis of advanced colorectal cancer. *BMC Cancer*. 2021;21(1):282.
- Zhang X, Mao T, Zhang B, et al. Characterization of DNA damage response deficiency in pancreatic cancer patients from China. *Cancer Commun (Lond)*. 2022;42(1):70–74.
- Buscail L, Bournet B, Cordelier P. Role of oncogenic KRAS in the diagnosis, prognosis and treatment of pancreatic cancer. *Nat Rev Gastroenterol Hepatol*. 2020;17(3):153–168.
- Bournet B, Muscari F, Buscail C, et al. KRAS G12D Mutation Subtype Is A Prognostic Factor for Advanced Pancreatic Adenocarcinoma. *Clin Transl Gastroenterol*. 2016;7(3):e157.
- Hong DS, Fakhri MG, Strickler JH, et al. KRAS(G12C) Inhibition with Sotorasib in Advanced Solid Tumors. *N Engl J Med*. 2020;383(13):1207–1217.
- Kim D, Xue JY, Lito P. Targeting KRAS(G12C): From Inhibitory Mechanism to Modulation of Antitumor Effects in Patients. *Cell*. 2020;183(4):850–859.
- Hobbs GA, Baker NM, Miermont AM, et al. Atypical KRAS G12R Mutant Is Impaired in PI3K Signaling and Macropinocytosis in Pancreatic Cancer. *Cancer Discov*. 2020;10(1):104–123.
- Kinsey CG, Camolotto SA, Boespflug AM, et al. Protective autophagy elicited by RAF-MEK-ERK inhibition suggests a treatment strategy for RAS-driven cancers. *Nat Med*. 2019;25(4):620–627.
- Bryant KL, Stalneck CA, Zeitouni D, et al. Combination of ERK and autophagy inhibition as a treatment approach for pancreatic cancer. *Nat Med*. 2019;25(4):628–640.
- Aguirre AJ, Nowak JA, Camarda ND, et al. Real-time Genomic Characterization of Advanced Pancreatic Cancer to Enable Precision Medicine. *Cancer Discov*. 2018;8(9):1096–1111.
- Schultheis B, Reuter D, Ebert MP, et al. Gemcitabine combined with the monoclonal antibody nimotuzumab is an active first-line regimen in KRAS wildtype patients with locally advanced or metastatic pancreatic cancer: a multicenter, randomized phase IIb study. *Ann Oncol*. 2017;28(10):2429–2435.
- Hu C, Hart SN, Polley EC, et al. Association between inherited germline mutations in cancer predisposition genes and risk of pancreatic cancer. *JAMA*. 2018;319(23):2401–2409.
- Parikh AR, He Y, Hong TS, et al. Analysis of DNA Damage Response Gene Alterations and Tumor Mutational Burden Across 17,486 Tubular Gastrointestinal Carcinomas: Implications for Therapy. *Oncologist*. 2019;24(10):1340–1347.
- Casolino R, Paiella S, Azzolina D, et al. Homologous Recombination Deficiency in Pancreatic Cancer: A Systematic Review and Prevalence Meta-Analysis. *J Clin Oncol*. 2021;39(23):2617–2631.
- Park W, Chen J, Chou JF, et al. Genomic Methods Identify Homologous Recombination Deficiency in Pancreas Adenocarcinoma and Optimize Treatment Selection. *Clin Cancer Res*. 2020;26(13):3239–3247.

- 41 Golan T, O'Kane GM, Denroche RE, et al. Genomic Features and Classification of Homologous Recombination Deficient Pancreatic Ductal Adenocarcinoma. *Gastroenterology*. 2021;160(6):2119–2132. e9.
- 42 Cuneo KC, Morgan MA, Sahai V, et al. Dose Escalation Trial of the Weer Inhibitor Adavosertib (AZD1775) in Combination With Gemcitabine and Radiation for Patients With Locally Advanced Pancreatic Cancer. *J Clin Oncol*. 2019;37(29):2643–2650.
- 43 Kong A, Mehanna H. WEE1 Inhibitor: Clinical Development. *Curr Oncol Rep*. 2021;23(9):1107.
- 44 Teo MY, Seier K, Ostrovskaya I, et al. Alterations in DNA Damage Response and Repair Genes as Potential Marker of Clinical Benefit From PD-1/PD-L1 Blockade in Advanced Urothelial Cancers. *J Clin Oncol*. 2018;36(17):1685–1694.
- 45 Sen T, Rodriguez BL, Chen L, et al. Targeting DNA Damage Response Promotes Antitumor Immunity through STING-Mediated T-cell Activation in Small Cell Lung Cancer. *Cancer Discov*. 2019;9(5):646–661.
- 46 Cristescu R, Mogg R, Ayers M, et al. Pan-tumor genomic biomarkers for PD-1 checkpoint blockade-based immunotherapy. *Science*. 2018;362(6411):eaar3593.
- 47 Mouw KW, Goldberg MS, Konstantinopoulos PA, D'Andrea AD. DNA damage and repair biomarkers of immunotherapy response. *Cancer discovery*. 2017;7(7):675–693.