

# Red cell distribution width is a potent prognostic parameter for in-hospital and post-discharge mortality in hospitalized coronavirus disease 2019 patients: a registry-based cohort study on 3941 patients

**Aim** To investigate clinical and prognostic associations of red cell distribution width (RDW) in hospitalized coronavirus disease 2019 (COVID-19) patients.

**Methods** We retrospectively analyzed the records of 3941 consecutive COVID-19 patients admitted to a tertiary-level institution from March 2020 to March 2021 who had available RDW on admission.

**Results** The median age was 74 years. The median Charlson comorbidity index (CCI) was 4. The majority of patients (84.1%) on admission presented with severe or critical COVID-19. Patients with higher RDW were significantly more likely to be older and female, to present earlier during infection, and to have higher comorbidity burden, worse functional status, and critical presentation of COVID-19 on admission. RDW was not significantly associated with C-reactive protein, occurrence of pneumonia, or need for oxygen supplementation on admission. During hospital stay, patients with higher RDW were significantly more likely to require high-flow oxygen therapy, mechanical ventilation, intensive care unit, and to experience prolonged immobilization, venous thromboembolism, bleeding, and bacterial sepsis. Thirty-day and post-hospital discharge mortality gradually increased with each rising RDW percent-point. In a series of multivariate Cox-regression models, RDW demonstrated robust prognostic properties at >14% cut-off level. This cut-off was associated with inferior 30-day and post-discharge survival independently of COVID-19 severity, age, and CCI; and with 30-day survival independently of COVID severity and established prognostic scores (CURB-65, 4C-mortality, COVID-gram and VACO-index).

**Conclusion** RDW has a complex relationship with COVID-19-associated inflammatory state and is affected by prior comorbidities. RDW can improve the prognostication in hospitalized COVID-19 patients.

Marko Lucijanić<sup>1,2,3</sup>,  
Ana Jordan<sup>2,4</sup>, Ivana  
Jurin<sup>2,4</sup>, Nevenka Piskač  
Živković<sup>2,5</sup>, Ena Sorić<sup>1,2</sup>, Irzal  
Hadžibegović<sup>2,4,6</sup>, Armin  
Atić<sup>2,7</sup>, Josip Stojić<sup>2,7</sup>, Diana  
Rudan<sup>2,4,8,9</sup>, Ozren Jakšić<sup>1,2,3</sup>,  
Nikolina Bušić<sup>2</sup>, Lovorka  
Đerek<sup>2,10</sup>, Ivica Lukšić<sup>2,3,11</sup>,  
Bruno Baršić<sup>2,3</sup>

<sup>1</sup>Hematology Department,  
University Hospital Dubrava,  
Zagreb, Croatia

<sup>2</sup>Primary Respiratory and Intensive  
Care Center, University Hospital  
Dubrava, Zagreb, Croatia

<sup>3</sup>University of Zagreb, School of  
Medicine, Zagreb, Croatia

<sup>4</sup>Cardiology Department, University  
Hospital Dubrava, Zagreb, Croatia

<sup>5</sup>Pulmonology Department,  
University Hospital Dubrava,  
Zagreb, Croatia

<sup>6</sup>Faculty of Dental Medicine and  
Healthcare, Josip Juraj Strossmayer  
University, Osijek, Croatia

<sup>7</sup>Department of Emergency  
Medicine, University Hospital  
Dubrava, Zagreb, Croatia

<sup>8</sup>University North, University Center  
Varaždin, Varaždin, Croatia

<sup>9</sup>Catholic University of Croatia,  
Zagreb, Croatia

<sup>10</sup>Clinical Department for  
Laboratory Diagnostics, University  
Hospital Dubrava, Zagreb, Croatia

<sup>11</sup>Department of Maxillofacial  
Surgery, University Hospital  
Dubrava, Zagreb, Croatia

Received: July 30, 2021

Accepted: February 14, 2022

**Correspondence to:**

Marko Lucijanić  
Hematology Department  
University Hospital Dubrava  
Av. Gojka Šuška 6  
10000 Zagreb, Croatia  
[markolucijanic@yahoo.com](mailto:markolucijanic@yahoo.com)

Coronavirus disease 2019 (COVID-19), caused by severe acute respiratory syndrome coronavirus-2 (SARS-CoV-2), is a systemic infectious disease usually presenting with fever and respiratory symptoms (1). Although the most frequent serious manifestation of COVID-19 is pneumonia, the disease has been associated with cardiovascular, neurological, and gastrointestinal symptoms (2). Systemic inflammatory response mediated by high interleukin-6 concentrations induced by SARS-CoV-2 infection is associated with more severe clinical presentation, respiratory deterioration, and death (3,4). The presence of prior chronic comorbidities substantially affects the survival of COVID-19 patients (1).

Anisocytosis, ie, unequal red blood cells (RBC) size, is a sensitive marker of distress in erythropoiesis or RBC destruction. It can be induced by various metabolic and inflammatory stimuli, nutrient deficiencies, infections, spleen disorders, and specific drugs interfering with RBC production (5). Anisocytosis can be quantified as a coefficient of variation of mean cell volume termed red blood cell distribution width (RDW), which is obtained by automatic cell counters. Higher RDW levels have recently gained attention as they are uniformly associated with unfavorable presentation and inferior outcomes in many chronic metabolic and malignant diseases (6-12). More severe clinical presentation and higher mortality rates were also found in COVID-19 patients with higher RDW levels (13-16). However, an association of RDW with other clinical outcomes in hospitalized COVID-19 patients, as well as the relationship with increased mortality in the context of other established prognostic scores, are not well defined. Thus, we aimed to investigate clinical and prognostic significance of RDW in a large cohort of hospitalized COVID-19 patients from our institution. We hypothesized that RDW was associated with more severe COVID-19 on admission and higher death rate.

## PATIENTS AND METHODS

We retrospectively analyzed the records of 3941 patients admitted to University Hospital Dubrava because of acute COVID-19 infection from March 2020 to March 2021. We included only patients who had available data on RDW on admission. During the pandemic, our institution was repurposed into a tertiary COVID-19 regional center treating patients with the most serious COVID-19 clinical presentation and COVID-19 patients with comorbidities who required immediate hospital level of care. All patients had a positive polymerase chain reaction or rapid antigen COVID-19 test before hospital admission. Patients were treated according to the contemporary guidelines. Only index hospital ad-

missions for acute COVID-19 were investigated. Data were obtained from the hospital registry thorough an analysis of electronic and written medical records of 4014 COVID-19 patients. Seventy-three patients were excluded due to lack of available RDW data on admission. The study was approved by the University Hospital Dubrava Review Board (2021/2503-04).

RDW on admission was expressed as a coefficient of variation (%) of mean corpuscular volume (MCV) as reported by Advia 2120i automated cell counter (Siemens Medical Solutions Diagnostics Pte Ltd, Swords, Ireland). COVID-19 severity at admission was graded according the World Health Organization (WHO) recommendations and national guidelines (17,18) as mild, moderate, severe, and critical. Comorbidities, assessed as individual entities, were summarized by using the Charlson comorbidity index. Mortality and other clinical outcomes were assessed from the start of hospital stay.

Modified early warning score (MEWS) was used to quantify COVID-19 symptoms. Eastern Cooperative Oncology Group (ECOG) classification was used to estimate functional status on admission. Confusion, urea, respiratory rate, blood pressure, and 65 years of age (CURB-65); International Severe Acute Respiratory and emerging Infections Consortium 4C mortality score; COVID-gram; and Veterans Health Administration COVID-19 (VACO) index were used as prognostic risk scores. Chronic Kidney Disease Epidemiology Collaboration (CKD-EPI) formula was used for the calculation of estimated glomerular filtration rate (eGFR).

The primary objective was to assess the clinical associations of RDW in the context of acute COVID-19 and its prognostic properties for investigated clinical outcomes. The secondary objectives were to assess the relationship with baseline clinical characteristics (both demographic and COVID-19-related), laboratory and radiologic features, and to establish appropriate optimized RDW cut-off levels to discriminate patient groups according to the risk of unwanted outcomes (30-day mortality, need for high flow oxygen therapy, need for mechanical ventilation, need for intensive care unit, arterial thromboses, venous thromboses, bleeding complications, bacterial sepsis, six-month post hospital discharge mortality, hospital-readmission).

## Statistical methods

The normality of distribution of numerical variables was assessed with the Shapiro-Wilk test. The results

**TABLE 1.** Patients' characteristics on admission and their relationship with red cell distribution width (RDW) stratified at median\*†

	Overall (N=3941)	RDW≤14% (N=1943)	RDW>14% (N=1998)	P
Age (years)	74 (64-82)	71 (60-80)	77 (67-84)	<0.001
Male sex	2215 (56.2)	1211 (62.3)	1004 (50.3)	<0.001
Reason for admission				Overall <0.001
Asymptomatic	92 (2.4)	42 (2.2)	52 (2.6)	0.364
Pneumonia	2665 (67.6)	1416 (72.9)	1249 (62.5)	<0.001
Temperature without pneum.	124 (3.1)	59 (3)	65 (3.3)	0.697
Acute medical condition	503 (12.8)	175 (9)	328 (16.4)	<0.001
Acute neurological condition	176 (4.5)	88 (4.5)	88 (4.4)	0.849
Acute surgical condition	379 (9.6)	163 (8.4)	216 (10.8)	0.001
Day of disease on admission	5 (1-9)	6 (2-10)	3 (1-8)	<0.001
ECOG status on admission	3 (1-4)	2 (1-3)	3 (2-4)	<0.001
Pneumonia	3485 (88.4)	3485 (88.4)	1756 (87.9)	0.281
Oxygen therapy	3226 (81.9)	1577 (81.2)	1649 (82.5)	0.264
MEWS score	2 (1-4)	2 (1-4)	2 (1-4)	0.357
COVID-19 symptom severity				0.006
Mild	423 (10.7)	198 (10.2)	225 (11.3)	0.278
Moderate	202 (5.1)	116 (6)	86 (4.3)	0.018 *
Severe	2730 (69.3)	1368 (70.4)	1362 (68.2)	0.128
Critical	586 (14.9)	261 (13.4)	325 (16.3)	0.012
Other infection on admission	576 (14.6)	199 (10.2)	377 (18.9)	<0.001
Charlson comorbidity index	4 (3-6)	4 (2-5)	5 (4-7)	<0.001
Nm. of drugs in chr. therapy	5 (3-8)	4 (2-7)	6 (4-9)	<0.001
Arterial hypertension	2741 (69.6)	1283 (66)	1458 (73)	<0.001
Diabetes mellitus	1185 (30.1)	547 (28.2)	638 (31.9)	<0.001
Hyperlipoproteinemia	944 (24.0)	433 (22.3)	511 (25.6)	<0.001
Obesity	1056 (26.8)	535 (27.5)	521 (26.1)	0.301
Chr. heart failure	638 (16.2)	190 (9.8)	448 (22.4)	<0.001
Atrial fibrillation	711 (18.0)	213 (11)	498 (24.9)	<0.001
Coronary artery disease	606 (15.4)	244 (12.6)	362 (18.1)	<0.001
Previous CVI	460 (11.7)	168 (8.6)	292 (14.6)	<0.001
Previous myocardial inf.	363 (9.2)	146 (7.5)	217 (10.9)	<0.001
Chr. kidney disease	486 (12.3)	121 (6.2)	365 (18.3)	<0.001
COPD	281 (7.1)	97 (5)	184 (9.2)	<0.001
Chronic liver disease	110 (2.8)	34 (1.7)	76 (3.8)	<0.001
Liver cirrhosis	49 (1.2)	4 (0.2)	45 (2.3)	<0.001
Active malignancy	419 (10.6)	90 (4.6)	329 (16.5)	<0.001
Metastatic malignancy	273 (6.9)	49 (2.5)	224 (11.2)	<0.001
History of malignancy	704 (17.9)	221 (11.4)	483 (24.2)	<0.001
Dementia	814 (20.7)	298 (15.3)	516 (25.8)	<0.001
Alcohol use	215 (5.5)	100 (5.1)	115 (5.8)	0.400
Smoking	230 (5.8)	110 (5.7)	120 (6)	0.645
IL-6 (pg/ml)	53.4 (20.9-121.8)	47.1 (17.5-106)	64.3 (24.9-149.4)	0.003
Procalcitonin (ng/mL)	0.22 (0.09-0.76)	0.17 (0.08-0.48)	0.3 (0.12-1.11)	<0.001
WBC (x10 <sup>9</sup> /L)	8 (5.7-11.2)	7.8 (5.7-10.8)	8 (5.7-11.6)	0.039
Hemoglobin (g/L)	128 (113-141)	135 (124-145)	119 (103-134)	<0.001
MCV (fL)	88.9 (85.6-92.2)	89.2 (86.6-92.2)	88.4 (84.5-92.3)	<0.001
MCHC (g/L)	333 (324-340)	336 (329-343)	329 (320-336)	<0.001
Reticulocyte count (x10 <sup>9</sup> /L)	53 (36-72.5)	38.5 (33-55)	55 (41-82.5)	0.022
Platelets (x10 <sup>9</sup> /L)	220 (163-296)	223 (170-294)	217 (155-298)	0.009

**TABLE 1.** Patients' characteristics on admission and their relationship with red cell distribution width (RDW) stratified at median\*†

	Overall (N = 3941)	RDW ≤ 14% (N = 1943)	RDW > 14% (N = 1998)	P
CRP (mg/L)	88.3 (39.4-150.8)	88.2 (37.3-148.4)	88.5 (40.8-152.2)	0.312
Ferritin (µg/L)	711 (386-1290)	808 (450-1384)	611 (310.5-1166.5)	<0.001
D-dimers (mg/L FEU)	1.42 (0.73-3.58)	1.15 (0.63-2.64)	1.75 (0.87-4.24)	<0.001
eGFR (ml/min/1.73 m <sup>2</sup> )	71.5 (45.8-90.3)	79.7 (58.6-93.3)	60.6 (34.6-85.6)	<0.001
LDH (U/L)	335 (248-454)	345.5 (254-463)	327 (242-443)	0.008
AST (U/L)	41 (18-64)	43 (30.8-66)	39 (26-61)	<0.001
ALT (U/L)	31 (19-52)	35 (23-59)	26 (16-44)	<0.001
GGT (U/L)	42 (24-82)	44 (26-79)	40 (22-84)	0.017
ALP (U/L)	72 (56-97)	66 (53-86)	79 (59-110)	<0.001
Total bilirubin (µmol/L)	11.4 (8.6-15.9)	11.3 (8.8-14.9)	11.6 (8.5-17.3)	0.044
Albumin (g/L)	32 (28-35)	33 (30-35)	30 (27-34)	<0.001
PT (%)	100 (89-109)	102 (93-110)	97 (85-107)	<0.001

\*Abbreviations: RDW – red cell distribution width; IQR – interquartile range; ECOG – Eastern Cooperative Oncology Group; MEWS – Modified Early Warning Score; nm. – number; chr. – chronic; CVI – cerebrovascular insult; inf. – infarction; COPD – chronic obstructive pulmonary disease; WBC – white blood cells; MCV – mean corpuscular volume; MCHC – mean corpuscular hemoglobin concentration; CRP – C-reactive protein; eGFR – estimated glomerular filtration rate; LDH – lactate dehydrogenase; AST – aspartate aminotransferase; ALT – alanine aminotransferase; GGT – gamma-glutamyl transferase; ALP – alkaline phosphatase; PT – prothrombin time.

†Data are n (%) or median (interquartile range). For comparison of numerical and categorical variables between lower and higher RDW groups the Mann-Whitney U and the X<sup>2</sup> or the Fisher test were used, respectively.

are presented as median and interquartile range (IQR), and the groups were compared by using the Mann-Whitney U test or Kruskal-Wallis one-way analysis of variance (ANOVA) where appropriate. Jonckheere-Terpstra test for trend was used to assess the trend of increase in interleukin-6 concentrations across RDW categories. The receiver operating characteristic (ROC) curve analysis was used to define optimal cut-off values of RDW for clinical outcomes. Categorical variables are presented as frequencies and percentages, and were compared between the groups by using the X<sup>2</sup> test or the Fisher test where appropriate. Survival analyses were based on the Kaplan-Meier method. For univariate survival analyses, the Cox-Mantel version of the log-rank test and the Cox regression analysis were used. For multivariate analyses, the Cox regression analysis was used while simultaneously controlling for all included variables. P values <0.05 were considered statistically significant. All analyses were performed with MedCalc statistical software, version 20.008 (MedCalc Software Ltd, Ostend, Belgium).

## RESULTS

### The association of patients' characteristics and RDW

The study enrolled 3941 hospitalized COVID-19 patients with available RDW values on admission (2215 or 56.2% men). The median age was 74 years; the median Charlson comorbidity index was 4 (IQR 3-6). The majority of patients (3316 or 84.1%) presented with severe or critical COVID-19

symptoms. During hospital stay, 901 (22.9%) patients required intensive care unit treatment, 768 (19.5%) required high-flow oxygen therapy, and 669 (17%) required mechanical ventilation. Thirty-day survival was 65.6%.

The median RDW was 14.1% (IQR 13.4-15.2). The optimal cut-off level for in-hospital and post-discharge survival discrimination defined by the ROC curve analysis was >14%. Patients' characteristics stratified at this level are presented in Table 1. Patients with higher RDW were significantly more likely to be older, to be female, to present earlier in the disease course, and to have a worse functional status on admission. Patients with higher RDW were more likely to be admitted to hospital due to an acute medical or surgical condition as a leading reason and were less likely to be admitted due to pneumonia itself. Although patients with higher and lower RDW had a similar frequency of radiological pneumonia and need for oxygen supplementation, patients with higher RDW were more likely to have critical severity of symptoms and to have other infection on admission (P < 0.05 for all analyses).

Charlson comorbidity index was significantly higher in patients with higher RDW, with higher RDW being associated with arterial hypertension, diabetes mellitus, hyperlipoproteinemia, chronic heart failure, atrial fibrillation, coronary artery disease, history of cerebrovascular insult, history of myocardial infarction, chronic kidney disease, chronic obstructive pulmonary disease, chronic liver

disease, liver cirrhosis, active malignancy, metastatic malignancy and dementia ( $P < 0.05$  for all analyses).

RDW was not significantly associated with C-reactive protein but was significantly associated with higher interleukin-6, which gradually increased with rising RDW percent points ( $P < 0.001$  for trend of increase and  $P = 0.003$  for overall difference in interleukin-6 between the categories) (Figure 1). Higher RDW was significantly associated with higher white blood cells, lower hemoglobin, lower MCV, lower mean corpuscular hemoglobin concentration, higher reticulocyte count, lower platelets, higher procalcitonin, lower ferritin, higher D-dimer, lower eGFR, lower lactate dehydrogenase, lower aspartate aminotransferase, lower alanine aminotransferase, lower gamma-glutamyl aminotransferase, higher alkaline phosphatase, higher total bilirubin, lower albumin, and lower prothrombin time ( $P < 0.05$  for all analyses).

The associations of RDW with clinical outcomes during and after hospital stay

Associations of RDW with clinical outcomes are presented in Table 2. The median length of hospital stay was 10 days

and did not significantly differ between patients with lower and higher RDW. Although patients with  $RDW > 14\%$  and  $\leq 14\%$  (cut-off optimized for survival discrimination) had similar frequencies of intensive care unit use, high flow oxygen therapy and mechanical ventilation use, arterial and venous thrombotic events, and bacteremia, we estab-

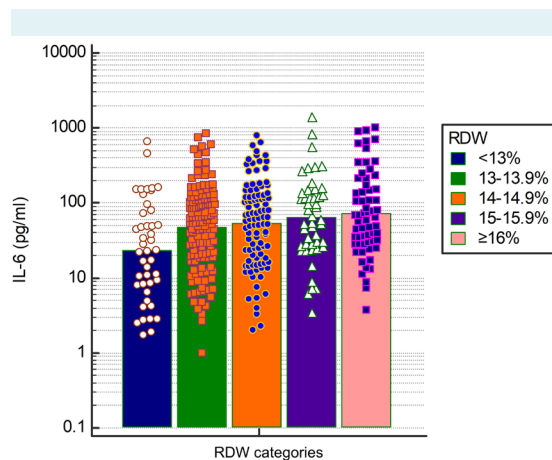


FIGURE 1. Median interleukin (IL)-6 values across red cell distribution width (RDW) percent point categories.

TABLE 2. Clinical outcomes of index coronavirus disease-2012 hospital stay and post-hospital discharge in relationship to red cell distribution width (RDW)<sup>†</sup>

	Overall (N = 3941)	RDW ≤ 14% (N = 1943)	RDW > 14% (N = 1998)	P
Length of hospitalization (days)	10 (6-16)	10 (6-16)	10 (6-16)	0.329
Intensive care unit	901 (22.9)	448 (23.1)	453 (22.7)	0.774 <sup>†</sup>
High-flow oxygen therapy	768 (19.5)	401 (20.6)	367 (18.4)	0.072 <sup>†</sup>
Mechanical ventilation	669 (17)	314 (16.2)	335 (17.8)	0.179 <sup>†</sup>
Immobilization ≥ 7 days	1753 (44.5)	760 (39.1)	993 (49.7)	<0.001*
Venous thromboembolism	212 (5.4)	102 (5.2)	110 (5.5)	0.713 <sup>†</sup>
Pulmonary embolism	143 (3.6)	77 (4)	66 (3.3)	0.268
Deep venous thrombosis	85 (2.2)	35 (1.8)	50 (2.5)	0.129 <sup>†</sup>
Arterial thrombosis	228 (5.8)	109 (5.6)	119 (6)	0.648
Acute myocardial infarction	67 (1.7)	30 (1.5)	37 (1.9)	0.455
Acute cerebrovascular insult	108 (2.7)	59 (3)	49 (2.5)	0.262
Bleeding	318 (8.1)	126 (6.5)	192 (9.6)	<0.001*
Major bleeding	126 (3.2)	42 (2.2)	84 (4.2)	<0.001*
Gastrointestinal bleeding	132 (3.3)	41 (2.1)	91 (4.6)	<0.001*
Bacterial sepsis	390 (9.9)	186 (9.6)	204 (10.2)	0.503 <sup>†</sup>
30-day survival rate, %	65.6	75.7	55.8	<0.001*
Hospital readmission <sup>§</sup>	76 (3)	33 (2.3)	43 (3.9)	0.016*
6-month post-discharge survival rate <sup>§</sup> , %	91.6	95.5	86.1	<0.001*

\*Statistically significant at level  $P < 0.05$ .

<sup>†</sup>significant difference at level  $P < 0.05$  on optimized RDW cut-off level (intensive care unit  $RDW > 13.1\%$ , high flow oxygen therapy  $RDW > 13.1\%$ , mechanical ventilation  $RDW > 13.1\%$ , venous thromboembolism  $RDW > 14.9\%$ , deep venous thrombosis  $RDW > 14.8\%$ , bacterial sepsis  $RDW > 12.9\%$ ).

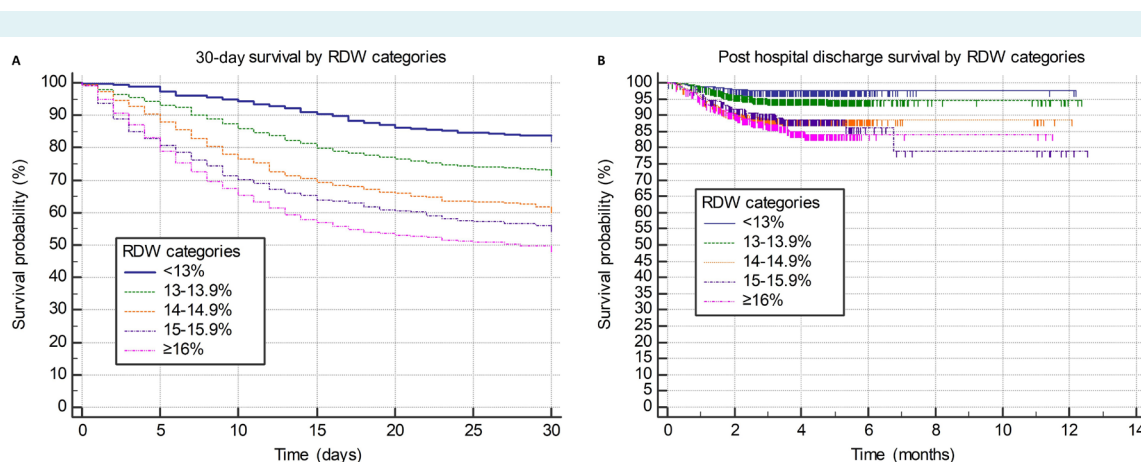
<sup>‡</sup>Data are n (%) or median (interquartile range), unless otherwise specified. For comparison of numerical and categorical variables between lower and higher RDW groups the Mann-Whitney U and the  $\chi^2$  or the Fisher test were used, respectively. Survival was compared by using the log-rank test. <sup>§</sup>evaluated only in index hospitalization survivors (N = 2545).

lished optimized cut-off points for specific outcomes with ROC curve analysis. Patients with RDW at the cut-off level of  $>13.1$  were significantly more likely to need high-flow oxygen therapy (20.2% vs 16.4%;  $P=0.021$ ), mechanical ventilation (18.1% vs 11.7%;  $P<0.001$ ), and intensive care unit (23.9% vs 17.9%;  $P<0.001$ ). Patients with  $RDW>13.8\%$  were significantly more likely to experience prolonged immobilization for  $>7$  days without bathroom privileges (49.1% vs 38.3%;  $P<0.001$ ). Regarding venous thromboembolism, higher RDW was significantly associated with venous thrombotic events (6.7% vs 4.8% for  $RDW>14.9\%$  vs  $\leq 14.9\%$ ;  $P=0.015$ ) driven by a difference in the frequency of deep venous thromboses (3.3% vs 1.6% for  $RDW>14.8\%$  vs  $\leq 14.8\%$ ;  $P<0.001$ ). However, no relevant cut-off was established for pulmonary embolism or arterial thrombotic events. Regarding bleeding complications, higher RDW was significantly associated with documented bleeding (10.6% vs 6.8% for  $RDW>14.7\%$  vs  $\leq 14.7\%$ ;  $P<0.001$ ), namely bleeding from the gastrointestinal tract (6.7% vs 2.5% for  $RDW>15.5\%$  vs  $\leq 15.5\%$ ;  $P<0.001$ ) and major bleeding events (4.2% vs 2% for  $RDW>13.9\%$  vs  $\leq 13.9\%$ ;  $P<0.001$ ). Patients with  $RDW>12.9\%$  compared with those with  $RDW\leq 12.9\%$  were significantly more likely to experience bacterial sepsis (10.3% vs 6.7%;  $P=0.017$ ).

Considering survival outcomes, patients with  $RDW>14\%$  experienced a significantly lower 30-day survival rate (55.8% vs 75.7%; hazard ratio [HR] 2.14;  $P<0.001$ ) and a lower 6-month post-hospital discharge survival rate (86.1% vs 95.5%; HR 3.11;  $P<0.001$ ). With each rising percent point of RDW on admission, we observed gradually worsening 30-day survival and post-hospital discharge survival (Figures

2A and 2B). Patients having RDW 13%-13.9%, 14%-14.9%, 15%-15.9%, and  $\geq 16\%$  in comparison with those having  $RDW<13\%$  had HR 1.79 ( $P<0.001$ ), HR 2.76 ( $P<0.001$ ), HR 3.42 ( $P<0.001$ ), and HR 4.12 ( $P<0.001$ ) for 30-day survival, respectively. They also had HR 2.03 ( $P=0.056$ ), HR 4.72 ( $P<0.001$ ), HR 4.78 ( $P<0.001$ ), and HR 6.06 ( $P<0.001$ ) for post-discharge survival, respectively.

In a series of multivariate Cox regression models, we demonstrated robust independent prognostic properties of RDW for survival. RDW remained significantly associated with 30-day survival in the Cox regression model adjusted for age, sex, COVID-19 symptom severity, and Charlson comorbidity index ( $RDW>14\%$  HR=1.62,  $P<0.001$ ; age HR=1.04,  $P<0.001$ ; male sex HR=1.2;  $P<0.001$ ; COVID-19 severity moderate vs mild  $P=0.669$ ; COVID-19 severity severe vs mild HR=9,  $P>0.001$ ; COVID-19 severity critical vs mild HR=22.63,  $P<0.001$ ; Charlson comorbidity index HR=1.11;  $P<0.001$ ). Similarly, RDW remained significantly associated with post-hospital discharge mortality in the Cox regression model adjusted for age, sex, COVID-19 severity, and Charlson comorbidity index ( $RDW>14\%$  HR=2.01,  $P<0.001$ ; age HR=1.05,  $P<0.001$ ; male sex  $P=0.708$ ; COVID-19 severity moderate vs mild  $P=0.987$ ; COVID-19 severity severe vs mild  $P=0.523$ ; COVID-19 severity critical vs mild HR=2.5,  $P=0.001$ ; Charlson comorbidity index HR=1.22;  $P<0.001$ ). RDW remained significantly associated with 30-day survival after adjusting for COVID-19 severity and COVID-19 prognostic scores CURB-65, 4C mortality, COVID gram, and VACO index ( $RDW>14\%$  HR=1.45;  $P<0.001$ ; COVID-19 severity categories, HR=1.77,  $P<0.001$ ; CURB-65 categories HR=1.39,  $P<0.001$ ; 4C mortality cate-



**FIGURE 2.** (A) Survival at 30-days from hospital admission and (B) post-hospital-discharge survival stratified according to the red cell distribution width (RDW) percent point categories.

gories HR=1.7,  $P<0.001$ ; COVID gram categories HR=2.67,  $P<0.001$ ; VACO index categories HR=3.51,  $P=0.002$ ).

## DISCUSSION

Our study, the largest single-institution cohort of hospitalized COVID-19 patients investigated so far, showed a gradual worsening of 30-day and post-hospital discharge survival with each rising percent point of RDW on admission. In addition, our study was first to investigate the associations of RDW with various clinical outcomes and to assess the prognostic role of RDW in the context of established COVID-19 prognostic scores. We demonstrated that RDW possessed independent prognostic properties and had a good potential for improvement of prognostication of hospitalized COVID-19 patients.

The main cause of RDW elevation varies from patient to patient with the same disease. This cause is hard to determine since it can be an impaired function of a number of organ systems (5,19). Nevertheless, RDW seems to be a universal marker of biological fitness as it reflects unwanted clinical outcomes in all diseases where it was investigated. Our data show that RDW is profoundly affected by the presence of prior comorbidities and age, with patients with higher RDW being more likely to have chronic metabolic comorbidities, more unfavorable cardiovascular risk profile, chronic renal disease, chronic obstructive pulmonary disease, liver cirrhosis, active and metastatic malignancy, and dementia. Interestingly, patients with higher RDW significantly grouped only among patients with critical COVID-19 on admission, and no similar association of RDW was observed with either radiological presence of pneumonia or the need for oxygen supplementation. Thus, the mentioned chronic comorbidities might predispose to higher functional impairment and critical clinical presentation observed in our study. Despite similar frequency of pneumonia and respiratory insufficiency at baseline, patients with higher RDW were significantly more likely to develop respiratory deterioration during hospital stay and to need intensive care and more advanced respiratory support.

RDW has a complex relationship with COVID-19-associated inflammatory state. Despite a significant association with higher interleukin-6 concentrations, which increased with an increase in RDW percent points, RDW was not significantly associated with CRP concentration on admission.

In addition, RDW was significantly associated with higher WBC, higher procalcitonin, higher D-dimer, lower albumin, lower prothrombin time, and higher bilirubin on

admission, but also with lower liver transaminases, lower ferritin, and lower lactate dehydrogenase. This ambiguous inflammatory profile associated with higher RDW further implies that RDW elevation is affected by mechanisms other than acute inflammatory state associated with COVID-19. The magnitude of RDW elevation occurring in acute COVID-19 infection is unknown, and high RDW, and consequently higher hazard of death, might represent a higher degree of chronic inflammation, a higher comorbidity burden, and a predisposition to worse clinical outcomes predating acute COVID-19. It was speculated whether patients with higher RDW might present later during disease course and thus represent more advanced inflammation (20). Our data suggest the opposite – patients with higher RDW were more likely to present earlier during disease course, and RDW might be elevated because of acutization of chronic medical conditions other than pneumonia due to active COVID-19 infection.

A number of studies and several large meta-analyses have confirmed potent prognostic properties of RDW for the survival of COVID-19 patients (13-16). Our study provides important novelty as it comprehensively assesses several important clinical outcomes and investigates how different levels of RDW increase reflect on survival, both in univariate and multivariate context controlling for clinically relevant parameters. RDW on admission not only predicts short- and long-term survival but also predicts a wide range of unwanted clinical outcomes, such as the need for more intensive respiratory support, prolonged immobilization, deep venous thrombosis, bacterial sepsis, and bleeding. The ability of RDW to discriminate between different outcomes changes when using different cut-off levels. Lower cut-off values optimally predicted complications of infectious diseases (bacterial sepsis and tendency for COVID-19 deterioration), whereas higher values optimally predicted venous thrombotic events. Although pronounced anisocytosis reflects a worse prognosis for thrombotic and septic outcomes in COVID-19 patients, the precise mechanism underlying these processes is not completely clear (compared with the intuitive role of some other blood components such as platelets in the same events [21]). Considering survival as the most important outcome, long-term and short-term prognostic properties of RDW are independent from COVID-19 severity on admission, age, and comorbidities. Additionally, RDW covers different parts of prognostic spectrum than WHO-defined COVID-19 severity categories: CURB-65, 4C mortality, COVID gram, and VACO index. Therefore, RDW might be very useful in assessing the prognosis of hospitalized COVID-19 patients. Our results need

to be validated by future studies in independent samples and by using RDW to further extend prognostic scores.

Limitations of our study are single-center experience, retrospective study design, and the lack of longitudinal assessment of RDW values. Our results are representative of tertiary level institution, with a majority of patients being elderly, having severe or critical COVID-19, and having high comorbidity burden. The main strength of our study is a large sample of patients who were uniformly exposed to standardized diagnostic and therapeutic procedures. This gives the study high statistical power to assess clinical and prognostic associations of RDW in the context of hospitalized COVID-19 patients.

In conclusion, RDW has a complex relationship with COVID-19-associated inflammatory state and is profoundly affected by prior comorbidities. It has a good potential for improvement of prognostication of hospitalized COVID-19 patients.

**Acknowledgment** This article is a part of the project "Registar hospitalno liječenih bolesnika u Respiracijskom centru KB Dubrava"/"Registry of hospitalized patients in University Hospital Dubrava Respiratory center."

**Funding** None.

**Ethical approval** given by the University Hospital Dubrava Review Board (2021/2503-04).

**Declaration of authorship** ML conceived and designed the study; ML, AJ, IJ, NPŽ, ES, IH, AA, JS, and NB acquired the data; all authors analyzed and interpreted the data; ML and OJ drafted the manuscript; critically revised the manuscript for important intellectual content; all authors gave approval of the version to be submitted; all authors agree to be accountable for all aspects of the work.

**Competing interests** ML is a statistical editor in the Croatian Medical Journal. To ensure that any possible conflict of interest relevant to the journal has been addressed, this article was reviewed according to best practice guidelines of international editorial organizations. All authors have completed the Unified Competing Interest form at [www.icmje.org/coi\\_disclosure.pdf](http://www.icmje.org/coi_disclosure.pdf) (available on request from the corresponding author) and declare: no support from any organization for the submitted work; no financial relationships with any organizations that might have an interest in the submitted work in the previous 3 years; no other relationships or activities that could appear to have influenced the submitted work.

## References

- 1 Wu Z, McGoogan JM. Characteristics of and important lessons from the coronavirus disease 2019 (COVID-19) outbreak in China: Summary of a report of 72 314 cases from the Chinese Center for Disease Control and Prevention. *JAMA*. 2020;323:1239-42. [Medline:32091533 doi:10.1001/jama.2020.2648](#)
- 2 Attaway AH, Scheraga RG, Bhimraj A, Biehl M, Hatipoglu U. Severe covid-19 pneumonia: pathogenesis and clinical management. *BMJ*. 2021;372. [Medline:33692022 doi:10.1136/bmj.n436](#)
- 3 Mehta P, Fajgenbaum DC. Is severe COVID-19 a cytokine storm syndrome: a hyperinflammatory debate. *Curr Opin Rheumatol*. 2021. [Medline:34264880 doi:10.1097/BOR.0000000000000822](#)
- 4 Lucijanić M, Stojić J, Atić A, Čikara T, Osmani B, Barišić-Jaman M, et al. Clinical and prognostic significance of C-reactive protein to albumin ratio in hospitalized coronavirus disease 2019 (COVID-19) patients. *Wien Klin Wochenschr*. 2022. [Medline:35038003 doi:10.1007/s00508-021-01999-5](#)
- 5 Salvagno GL, Sanchis-Gomar F, Picanza A, Lippi G. Red blood cell distribution width: A simple parameter with multiple clinical applications. *Crit Rev Clin Lab Sci*. 2015;52:86-105. [Medline:25535770 doi:10.3109/10408363.2014.992064](#)
- 6 Kust D, Lucijanić M, Urch K, Samija I, Celap I, Kruljac I, et al. Clinical and prognostic significance of anisocytosis measured as a red cell distribution width in patients with colorectal cancer. *QJM*. 2017. [Medline:28069908 doi:10.1093/qjmed/hcw223](#)
- 7 Lucijanić M, Pejša V, Jaksic O, Mitrovic Z, Tomasovic-Loncaric C, Stooš-Veic T, et al. The degree of anisocytosis predicts survival in patients with primary myelofibrosis. *Acta Haematol*. 2016;136:98-100. [Medline:27189016 doi:10.1159/000445247](#)
- 8 Krečak I, Krečak F, Gverić-Krečak V. High red blood cell distribution width might predict thrombosis in essential thrombocythemia and polycythemia vera. *Blood Cells Mol Dis*. 2020;80:102368. [Medline:31669934 doi:10.1016/j.bcmd.2019.102368](#)
- 9 Jurin I, Trkulja V, Ajduk M, Letilović T, Hadžibegović I. Red cell distribution width in acute pulmonary embolism patients: A simple aid for improvement of the 30-day mortality risk stratification based on the pulmonary embolism severity index. *Heart Lung*. 2019;48:436-45. [Medline:30905389 doi:10.1016/j.hrtlng.2019.02.006](#)
- 10 Li N, Zhou H, Tang Q. Red Blood Cell Distribution Width: A Novel Predictive Indicator for Cardiovascular and Cerebrovascular Diseases. *Dis Markers*. 2017;2017:7089493. [Medline:29038615 doi:10.1155/2017/7089493](#)
- 11 Periša V, Zibar L, Sinčić-Petričević J, Knezović A, Periša I, Barbić J. Red blood cell distribution width as a simple negative prognostic factor in patients with diffuse large B-cell lymphoma: a retrospective study. *Croat Med J*. 2015;56:334-43. [Medline:26321026 doi:10.3325/cmj.2015.56.334](#)
- 12 Lucijanić M, Krecak I, Verstovsek S, Soric E, Galusic D, Holik H, et al. Higher red blood cell distribution width predicts thrombosis risk in primary and secondary myelofibrosis. *Ann Hematol*. 2021. [Medline:34825960 doi:10.1007/s00277-021-04724-4](#)
- 13 Sarkar S, Kannan S, Khanna P, Singh AK. Role of red blood cell distribution width, as a prognostic indicator in COVID-19: A systematic review and meta-analysis. *Reviews in Medical Virology*. 2021:e2264-e. [Medline:34091982 doi:10.1002/rmv.2264](#)
- 14 Zinellu A, Mangoni AA. Red blood cell distribution width, disease severity, and mortality in hospitalized patients with SARS-CoV-2 infection: a systematic review and meta-analysis. *J Clin Med*. 2021;10. [Medline:33466770 doi:10.3390/jcm10020286](#)
- 15 Lee JJ, Montazerin SM, Jamil A, Jamil U, Marszalek J, Chuang



- ML, et al. Association between red blood cell distribution width and mortality and severity among patients with COVID-19: A systematic review and meta-analysis. *J Med Virol.* 2021;93:2513-22. [Medline:33448439](#) [doi:10.1002/jmv.26797](#)
- 16 Lippi G, Henry BM, Sanchis-Gomar F. Red blood cell distribution is a significant predictor of severe illness in coronavirus disease 2019. *Acta Haematol.* 2021;144:360-4. [Medline:32841949](#) [doi:10.1159/000510914](#)
- 17 World Health Organization. Clinical management of COVID-19: interim guidance, 27 May 2020. Geneva: World Health Organization, 2020 2020. Report No.: Contract No.: WHO/2019-nCoV/clinical/2020.5.
- 18 Ministarstvo zdravstva Republike Hrvatske. Smjernice za liječenje oboljelih od COVID-19, verzija 1 od 8. rujna 2020. 2020.
- 19 Lippi G, Plebani M. Red blood cell distribution width (RDW) and human pathology. One size fits all. *Clin Chem Lab Med.* 2014;52:1247-9. [Medline:24945432](#) [doi:10.1515/cclm-2014-0585](#)
- 20 Foy BH, Carlson JCT, Reinertsen E, Padros IVR, Pallares Lopez R, Palanques-Tost E, et al. Association of red blood cell distribution width with mortality risk in hospitalized adults With SARS-CoV-2 infection. *JAMA Netw Open.* 2020;3:e2022058. [Medline:32965501](#) [doi:10.1001/jamanetworkopen.2020.22058](#)
- 21 Lucijanac M, Krecak I, Soric E, Sedinic M, Sabljic A, Derek L, et al. Thrombocytosis in COVID-19 patients without myeloproliferative neoplasms is associated with better prognosis but higher rate of venous thromboembolism. *Blood Cancer J.* 2021;11:189. [Medline:34845183](#) [doi:10.1038/s41408-021-00585-2](#)