






Review

# The Medicinal Natural Products of *Cannabis sativa* Linn.: A Review

Anwuli Endurance Odieka<sup>1</sup>, Gloria Ukalina Obuzor<sup>2</sup>, Opeoluwa Oyehan Oyedeji<sup>3</sup>, Mavuto Gondwe<sup>4</sup>, Yiseyon Sunday Hosu<sup>5</sup> and Adebola Omowunmi Oyedeji<sup>1,\*</sup>

<sup>1</sup> Department of Chemical and Physical Sciences, Walter Sisulu University, Mthatha 5099, South Africa; endy\_odieka@yahoo.com

<sup>2</sup> Department of Pure and Industrial Chemistry, University of Port Harcourt, Port Harcourt 500004, Rivers State, Nigeria; gloria.obuzor@uniport.edu.ng

<sup>3</sup> Department of Chemistry, Fort Hare University, Alice 5700, South Africa; ooyedeji@ufh.ac.za

<sup>4</sup> Department of Human Biology, Walter Sisulu University, Mthatha 5099, South Africa; mgondwe@wsu.ac.za

<sup>5</sup> Department of Economics and Business Sciences, Walter Sisulu University, Mthatha 5099, South Africa; yhosu@wsu.ac.za

\* Correspondence: aoyedeji@wsu.ac.za; Tel.: +27-764-260-279

**Abstract:** *Cannabis sativa* is known among many cultures for its medicinal potential. Its complexity contributes to the historical application of various parts of the plant in ethno-medicines and pharmacotherapy. *C. sativa* has been used for the treatment of rheumatism, epilepsy, asthma, skin burns, pain, the management of sexually transmitted diseases, difficulties during child labor, postpartum hemorrhage, and gastrointestinal activity. However, the use of *C. sativa* is still limited, and it is illegal in most countries. Thus, this review aims to highlight the biological potential of the plant parts, as well as the techniques for the extraction, isolation, and characterization of *C. sativa* compounds. The plant produces a unique class of terpenophenolic compounds, called cannabinoids, as well as non-cannabinoid compounds. The exhaustive profiling of bioactive compounds and the chemical characterization and analysis of *C. sativa* compounds, which modern research has not yet fully achieved, is needed for the consistency, standardization, and the justified application of *Cannabis sativa* products for therapeutic purposes. Studies on the clinical relevance and applications of cannabinoids and non-cannabinoid phenols in the prevention and treatment of life-threatening diseases is indeed significant. Furthermore, psychoactive cannabinoids, when chemically standardized and administered under medical supervision, can be the legal answer to the use of *C. sativa*.

**Keywords:** medicinal plant; *Cannabis sativa*; phytochemicals; bioactivity; extraction methods; characterization



**Citation:** Odieka, A.E.; Obuzor, G.U.; Oyedeji, O.O.; Gondwe, M.; Hosu, Y.S.; Oyedeji, A.O. The Medicinal Natural Products of *Cannabis sativa* Linn.: A Review. *Molecules* **2022**, *27*, 1689. <https://doi.org/10.3390/molecules27051689>

Academic Editor: Francesco Paolo Busardò

Received: 31 December 2021

Accepted: 24 February 2022

Published: 4 March 2022

**Publisher's Note:** MDPI stays neutral with regard to jurisdictional claims in published maps and institutional affiliations.



**Copyright:** © 2022 by the authors. Licensee MDPI, Basel, Switzerland. This article is an open access article distributed under the terms and conditions of the Creative Commons Attribution (CC BY) license (<https://creativecommons.org/licenses/by/4.0/>).

## 1. Introduction

The applications of plants as medicines predates human history. A medicinal plant refers to any plant which contains substances of therapeutic potential in one or more of its parts for the synthesis of plant-based drugs [1]. Active medicinal plant ingredients are referred to as bioactive phytochemicals. [2]. These bioactive compounds are believed to increase the ability of plants to survive or adapt to their surroundings [3] and are used as medicines, flavorings, and recreational drugs in humans. One notable medicinal plant that has continued to garner attention over the years, and in recent times, is *Cannabis sativa*.

*Cannabis sativa* L. is known for its medicinal uses since ancient times, because of its rich supply of phytochemicals [4], hence the quest for harnessing its pharmacological potential by scientists. The term “Cannabis” is used to define the products (drugs and essential oils) that are prepared or obtained from the annual herb *C. sativa* and its variants, which are of the family Cannabaceae [5]. The utilization of this multipurpose plant has been restrained for a long time because of the psychoactive effects of a specific cannabinoid

( $\Delta^9$ -tetrahydrocannabinol;  $C_{12}H_{30}O_2$ ) [6]. It was strongly prohibited in the twentieth century, and was removed from the British pharmacopeia. The plant was demonized due to its high abuse liability and supposedly insufficient health benefits [7]. Furthermore, due to the inability to prepare standardized preparations, and the diffusion of the recreational use of cannabis below therapeutic concentrations from the end of the 19th to the first half of the 20th century, the medical use of cannabis began to decline [7]. In 1937, the “Marihuana Tax Act”, a federal legislation in the United States, functionally ended all medical uses of cannabis and was removed from the “National Formulary and Pharmacopoeia” in 1941 [7]. In 1961, cannabis resin, extracts, and tinctures were listed in the Schedule I of the single Convention on Narcotic Drugs, which prohibits the use, possession, production, manufacture, export, import, and trade of cannabis, except for medical and scientific purposes [7].

However, in multiple countries today, its cultivation and usage are regulated by laws [6,8]. Recent decriminalization policies and new scientific evidence have increased the interest in the medicinal potential of cannabis and have paved the way for the release of marketing authorizations for cannabis-based products [7]. In 1985, the United States Food and Drugs Administration (US FDA) reconsidered the medical use of cannabinoids, and approved Marinol (dronabinol) and Cesamet (nabilone), two synthetic analogues of tetrahydrocannabinol (THC), for the management of nausea and vomiting associated with cancer chemotherapy [7]. The Office of Medical Cannabis Research (OMC), a Dutch government agency in Europe, became the first organization to obtain the exclusive right to supply medical cannabis to research institutes and pharmacies, and, under the Single Convention on Narcotic Drugs of 1961, to import and export cannabis extracts and resin for medical purposes. Several medical cannabis products, all of which are dried female flowering tops, except Bediol (which is ground into small pieces for its easy manipulation by patients with spasticity), are exported by the OMC, with the proper licenses, to other member states of the European Union [7]. In Italy, the Military Pharmaceutical Chemical Works of Florence became the official national settlement for cultivating and manufacturing medical cannabis with a standard cannabinoid content [7,9]. The Italian Ministry of Health in November 2015, in a Ministerial Degree, authorized the indoor cultivation of cannabis flowering tops at a fixed temperature and at fixed light-dark cycles, leading to a standardized composition of different cannabinoids [9]. Two Italian products (FM1 and FM2) are currently available for consumers, and their use was approved for the treatment of chronic pain, neurological disorders, and other diseases resistant to standard therapies [7,9,10]. Non-psychoactive compounds found in *C. sativa* are associated with fewer side effects and can be used for several industrial applications [6]. The hemp stem supplies both cellulosic and woody fibers. The woody fibers are used for animal beddings, while the cellulosic fibers (bast fibers) are used as a substitute for fiberglass, and to produce bioplastics [4]. Its use as an anti-bacterial finishing agent and in functionalized textiles have also been reported [4]. The inflorescence was used, traditionally, for acute pain, insomnia, coughing, and wounds. The leaves were used for malaria, panting, roundworm, scorpion stings, hair loss, and the greying of hair. The stem bark was used for physical injury and strangury. Vaginal discharge, difficult births, strangury, the retention of the placenta, and physical injuries were treated using the roots [11]. In addition, *Cannabis sativa* contains essential oils of a high value, which can also improve the effectiveness of cannabinoids in pharmaceutical formulations [6].

Despite the influx of chemical-based medicines for treatments, the relevance of medicinal plants in drug development cannot be overemphasized. In recent years, commercial medicinal cannabis products with several variations in the phytocannabinoid content have been licensed and produced in Canada [7,8] and in several other countries. Several synthetic and standardized products are currently available on the market; however, patients' preferences lean towards herbal preparations, because they are easy to handle and self-administer [7]. Thus, this review intends to highlight the phytochemicals present in the different plant parts, which potentiates their pharmacological activities, as well as the techniques for the extraction, isolation, and characterization of *C. sativa* compounds.

## 2. Methods

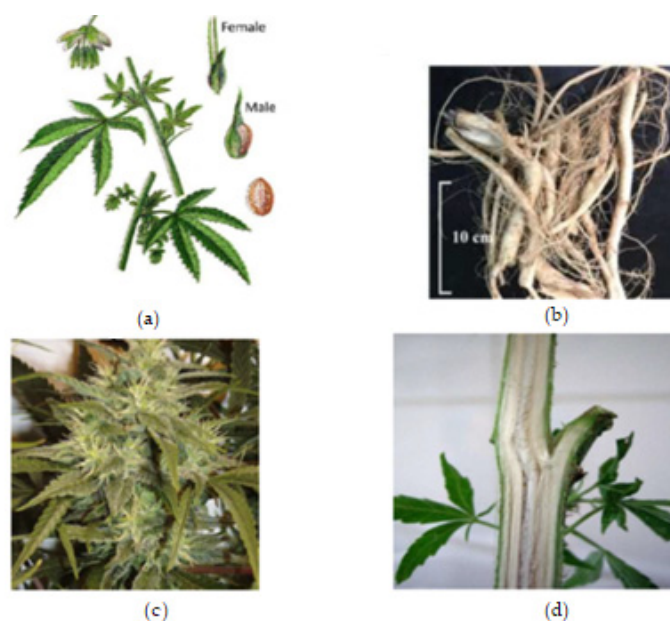
Literature on the published works of *Cannabis sativa* was obtained using electronic search engines, such as Google Scholar, the WSU online database (PubChem), and Science Direct. The keywords included, namely, *Cannabis sativa*, medicinal plants, Cannabis phytochemicals, ethnopharmacology bioactivity, and medicinal potentials, were used to source for data. An extensive review of the literature from 2011 through to 2021 (the last ten years) on *Cannabis sativa* L. was used to summarize its medicinal potential. Conversely, an emphasis will be placed on the isolation and characterization techniques from 1970 to 2021 to have a broadened view of the advancements in analytical techniques over the past years. Overall, twenty-nine (29) papers relating to the areas of our focus were chosen and were reviewed by all authors. The results from the search were carefully sorted, based on a general understanding, the review questions, and the related objectives.

## 3. Origin and Botanical Description of *C. sativa*

The genus name *Cannabis* means “cane-like” while *sativa* means “sown”, which signifies that the plant is propagated from the seed and not from the roots [12]. It is believed to have originated in Asia and occurs widely in Africa [12,13]. Central and south-east Asia are the potential natural origins for the domestication of the Cannabis genus [14] and it is known by different common names in different languages (hemp, marihuana, kannabis sativa, ganja, bhang, and al-bhang) [15]. In South Africa, it is colloquially known, in Afrikaans, as “dagga”; in IsiXhosa as “umfincafincane”; and in Isizulu as “umunyane” [16,17]. Taxonomically, Carl Linnaeus, a Swedish botanist, was the first to coin the name *Cannabis sativa* [18]. Other botanists stated that different types of Cannabis existed based on their size, shape, and resin content (breeding and selection). This review discusses, in particular, *C. sativa*.

The Cannabis phenotype (its observable traits or characteristics, such as its leaf shape and flower color) is based on two main factors: its genetic code (genotype) and the external environmental factors [19].

The roots are branched and are about 30–60 cm deep (Farag and Kayser, 2017) [12]. Cannabis inflorescence is made up of several flower heads found on long leafy stems from each leaf axil. A single brownish fruit, about 2–5mm long, is produced per flower, and it contains a single seed tightly covered with a hard shell [12]. The fruit is propagated by bird and the seed germinates after 8–12 days [18]. The leaves, bracts, and stems of the plant are rich in trichome, which are a diverse set of structures containing the secondary metabolites (phytocannabinoids and terpenoids) responsible for the defense, plant interactions, and typical smell [18]. Figure 1, below, shows the plant parts of *C. sativa*.



**Figure 1.** Cannabis plant parts. (a) Male and female *Cannabis* flowering parts with fresh leaf and seed. (b) Fresh *Cannabis* root. (c) Fresh *Cannabis* inflorescence (flower). (d) Fresh *Cannabis* stem bark.

#### 4. Phytochemistry of *C. sativa*

##### 4.1. Chemical Profile of *C. sativa*

*Cannabis*, as a herbal medicine, is a complex mixture of compounds, including cannabinoid phenols, non-cannabinoid phenols (stilbenoids, lignans, spiro-indans, and dihydrophenanthrenes), flavonoids, terpenoids, alcohols, aldehydes, n-alkanes, wax esters, steroids, and alkaloids [6,8,11]. Over 500 chemical compounds have been isolated from the cannabis plant and have been reported [13]. The several classes of secondary metabolites are present in different parts of the plant with a wide range of applications (nutraceuticals, cosmetics, aromatherapy, and pharmacotherapy) that are beneficial for humans. However, previous studies have focused mainly on the cannabinoids,  $\Delta^9$ -tetrahydrocannabinol ( $\Delta^9$ -THC) and cannabidiol (CBD) in particular; hence, the female flower top is only harvested, while other parts of the plant are discarded [11].

Cannabinoids are a class of terpenophenolic compounds obtained by the alkylation of an alkyl-resorcinol with a monoterpene unit [20,21]. They feature alkyl resorcinol and monoterpene moieties in their molecules [20,22]. This specific chemical class in *Cannabis* is present in the glandular trichomes, which are abundant in the female flower as phytocannabinoid acids, and in the vegetable matrix as neutral phytocannabinoids [6,13]. They are biosynthesized by the alkylation of olivetolic acid with geranyl-pyrophosphate by a prenyltransferase to produce cannabigerolic acid (CBGA). Decarboxylation, a chemical reaction, converts the acidic forms ( $\Delta^9$  THCA, CBDA, CBCA, and CBGA) into their neutral forms, which are more active and efficient in terms of pharmacological activity [8,23]. To date, 125 cannabinoids have been identified and reported, in addition to five new cannabinoids reported in the past two years, 42 non-cannabinoid phenolics, 34 flavonoids, 120 terpenoids, 3 sterols, and 2 alkaloids [8,11,13]. Terpenoids are the second largest class of cannabis compounds and are responsible for their characteristic aroma [13]. Table 1 below summarizes the classes of compounds isolated from *Cannabis sativa* and the different plant parts in which they are present.

**Table 1.** Chemical compounds Isolated from *Cannabis sativa*.

S/N *	Class of Compounds	Plant Part(s)	Isolated Compounds	References
1	Cannabinoids: -Cannabinoid acids -Neutral cannabinoids -Cannabinoid derivatives -Cannabinoid acid esters	Leaves, flowers, resin, stembarks, and roots	$\Delta^9$ -tetrahydrocannabivarin, $\alpha/\beta$ -fenchyl $\Delta^9$ -tetrahydrocannabinolate, $\Delta^9$ -tetrahydrocannabinol, $\alpha$ -terpenyl (-)- $\Delta^9$ - <i>trans</i> -tetrahydrocannabinolate, $\gamma$ -eudesmyl (-) $\Delta^9$ - <i>trans</i> -tetrahydrocannabinolate, 8 $\alpha$ -hydroxy(-)- $\Delta^9$ - <i>trans</i> -tetrahydrocannabinol, 8 <i>b</i> -hydroxy(-)- $\Delta^9$ - <i>trans</i> -tetrahydro cannabinol, 8-oxo(-)- $\Delta^9$ - <i>trans</i> -tetrahydrocannabinol, Cannabisol, (-)- $\Delta^9$ - <i>trans</i> -tetrahydrocannabiphorol, (-)- $\Delta^9$ - <i>trans</i> -tetrahydrocannabihexol, (-)- $\Delta^8$ - <i>trans</i> -tetrahydrocannabinol, $\Delta^8$ - <i>trans</i> -tetrahydrocannabinolic acid, Cannabigerol, 6,7- <i>trans</i> /cis-epoxycannabigerolic acid, Sesquicannabigerol, Cannabigerolic acid, Cannabigerovarin, Cannabidiol, C <sub>4</sub> -Cannabidiol, Cannabidivarin, C <sub>4</sub> -tetrahydrocannabinol, Cannabichromene, Cannabichromevarin, Cannabichromanone, -D <sub>4</sub> -acetoxycannabichromene, Cannabicitran, Cannabiripsol, Cannabicumaronone, Cannabifuran, Cannabielsoin, Cannabielsoic acid, Cannabicyclol, Cannabinodiol, bornyl/epi-bornyl- $\Delta^9$ -tetrahydrocannabinolate Cannabinol, Cannabitrinol, Cannabimovone, and Cannabioxepane	[8,11,13,24–31]
<b>Non-Cannabinoid Constituents</b>				
2	Non-cannabinoid phenol: -Stilbenoids -Spiro-indans -Phenanthrenes -Lignans, lignanamides, and phenolic amides	Leaves, flowers, stem, hemp pectin, resin, fruit, seed, and root	Dihydrostilbenes, Dihydrophenathrenes, Cannabistilbene, Canniprene, Cannithrene, Denbinobin, Phloroglucinol $\beta$ - <i>D</i> -glucoside, Cannabispiran, Cannabispirone, Cannabispirenone, Cannabisirol, Cannabispirketal, <i>a</i> -cannabispiranol-4'- <i>O</i> - $\beta$ -glucopyranose, prenylspiroidienone, 4,5-dihydroxy-2,3,6-trimethoxy-9,10-dihydrophenanthrene, Cannabisin A-O 4,7-dimethoxy-1,2,5-trihydroxyphenathrene, 5-methyl-4-pentyl-2,6,2-trihydroxybiphenyl, 5-methyl-4-pentylbiphenyl-2,2,6-triol, <i>N</i> - <i>trans</i> -coumaroyltyramine, <i>N</i> - <i>trans</i> -feruloyltyramine, <i>N</i> - <i>trans</i> -caffeoyltyramine, 3,3'-demethylheliotropamide, and Grossamide.	[8,13,28,32–34]



Table 1. Cont.

S/N *	Class of Compounds	Plant Part(s)	Isolated Compounds	References
3	Terpenoids (Terpenes): -Monoterpenes -Sesquiterpenes -Diterpenes -Triterpene,	Essential oils of fresh and dried leaves, flowers, stembarks, and roots	$\alpha$ -pinene, $\beta$ -pinene, linalool, linalool oxide, myrcene, limonene, camphene, $\alpha$ -terpinene, $\gamma$ -terpinene, $\alpha$ -terpinolene, $\alpha$ -terpineol, terpinene-4-ol, sabinene, sabinene hydrate, <i>cis</i> -sabinene hydrate, $\alpha$ -phellandrene, $\beta$ -phellandrene, 2-methyl-2-heptene-6-one, borneol, piperitenone, geraniol, carvacrol, carvone, <i>cis</i> -carveol, citronellol, bornyl acetate, ipsdienol, germacrene-B, clovandioid, $\alpha$ -bisabolol, $\beta$ -eudesmol, $\gamma$ -eudesmol, $\alpha$ -caryophyllene, $\beta$ -caryophyllene oxide, $\alpha$ -Humulene, Phytol, neophytadiene, friedelin (friedelan-3-one), epifriedelanol, $\beta$ -amyrin, Vomifoliol, dihydrovomifoliol, and dihydroactinidiolide $\beta$ -ionone	[8,11,13,28,29,35,36]
4	Flavonoids: -Methylated -Glycosylated (C or O glycosides) -Prenylated -Geranylated	Leaves, flowers, seed, and fruit	Orientin, Vitexin, Isovitexin, Apigenin, Luteolin, Kaempferol, Quercetin, Cytoside, Cytoside glucoside, Canniflavone (Cannflavin), Naringenin, and Naringin	[8,11,13,28,29,35,37–39]
5	Sterols	Stembarks, roots, and leaves	Campesterol, Stigmasterol, and $\beta$ -Sitosterol	[11,40]
7	Alkaloids	Roots, leaves, stembark	Cannabisativine and Anhydrocannabisativine	[13,40]
8	Fatty acids: -Saturated and unsaturated fatty acids and their esters	Seeds	Roughanic acid, Stearidonic acid, $\alpha$ -linolenic acid, and oxylipins.	[8,28]
9	Hydrocarbons ( <i>n</i> -alkane)	-	$\Delta^9$ -Tetrahydrocannabiorcolic acid	[8]

\* S/N = Serial Number.

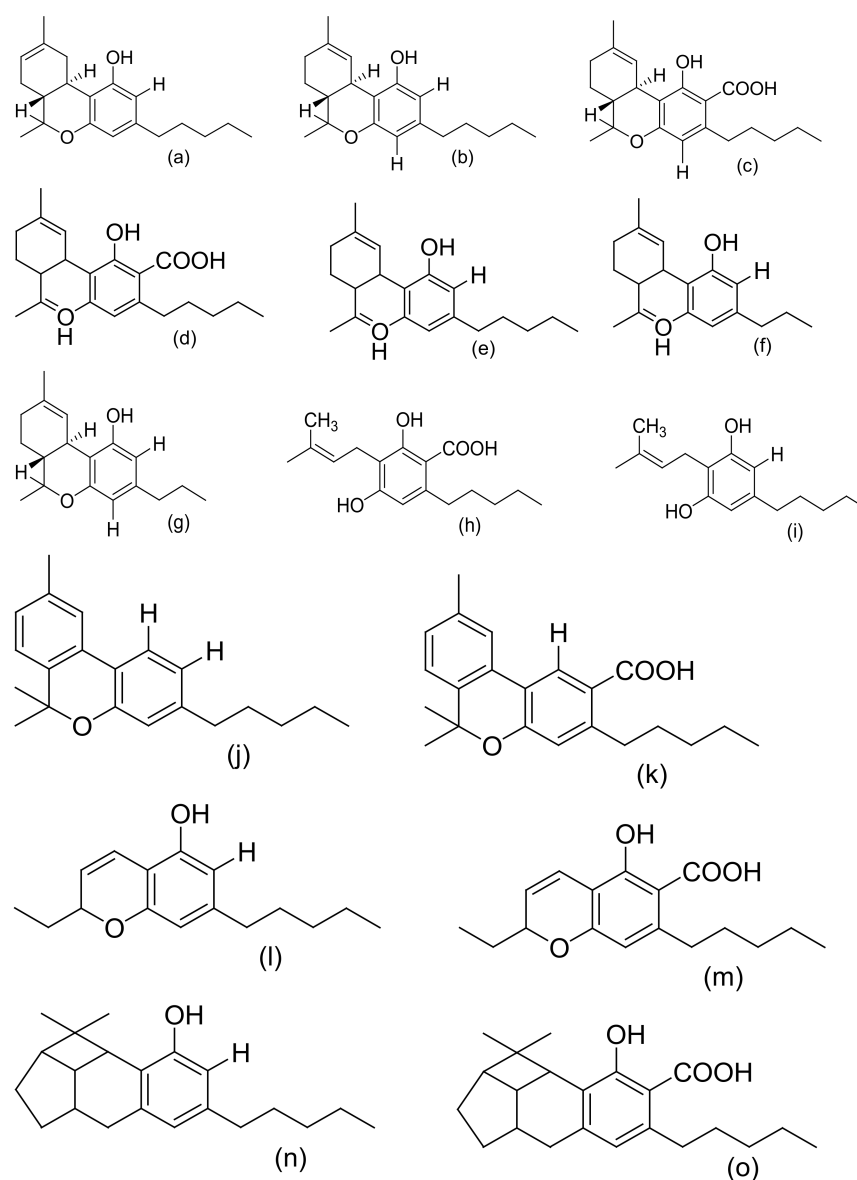
Figures 2–4 below show the structures of the different classes of bioactive compounds isolated from *Cannabis sativa* [13,29,41].

#### 4.2. Extraction, Isolation, and Chemical Characterization of *C. sativa*

Many methods have been reported for the extraction of Cannabis in the literature. These include direct maceration (DM), soxhlex extraction, ultrasound-assisted extraction (UAE), supercritical fluid extraction, and microwave-assisted extraction (MAE) [41]. However, two methods of extracting Cannabis are differentiated in the literature [41]. The first is the maceration of the plant material in an organic solvent (direct maceration) and the subsequent removal of the solvent by the concentration of the extract under reduced pressure [41]. The second is the innovative supercritical fluid extraction (SFE) method, which involves the use of pressurized solvents [41]. It is necessary for cannabinoid compounds to be extracted with organic solvents instead of water, because the active compounds are less soluble in polar solvents [41]. The most commonly used solvents are ethanol, ether, chloroform, and methanol [42]. When used for extraction, various compounds, including some undesired substances, dissolve together with the cannabinoids [42]. The high solvent power of ethanol for cannabinoid compounds is the reason why it is frequently used in home-made extracts of Cannabis [41]. However, non-desired compounds (chlorophyll, lipids, and waxy materials) are also extracted which, therefore, requires further steps to

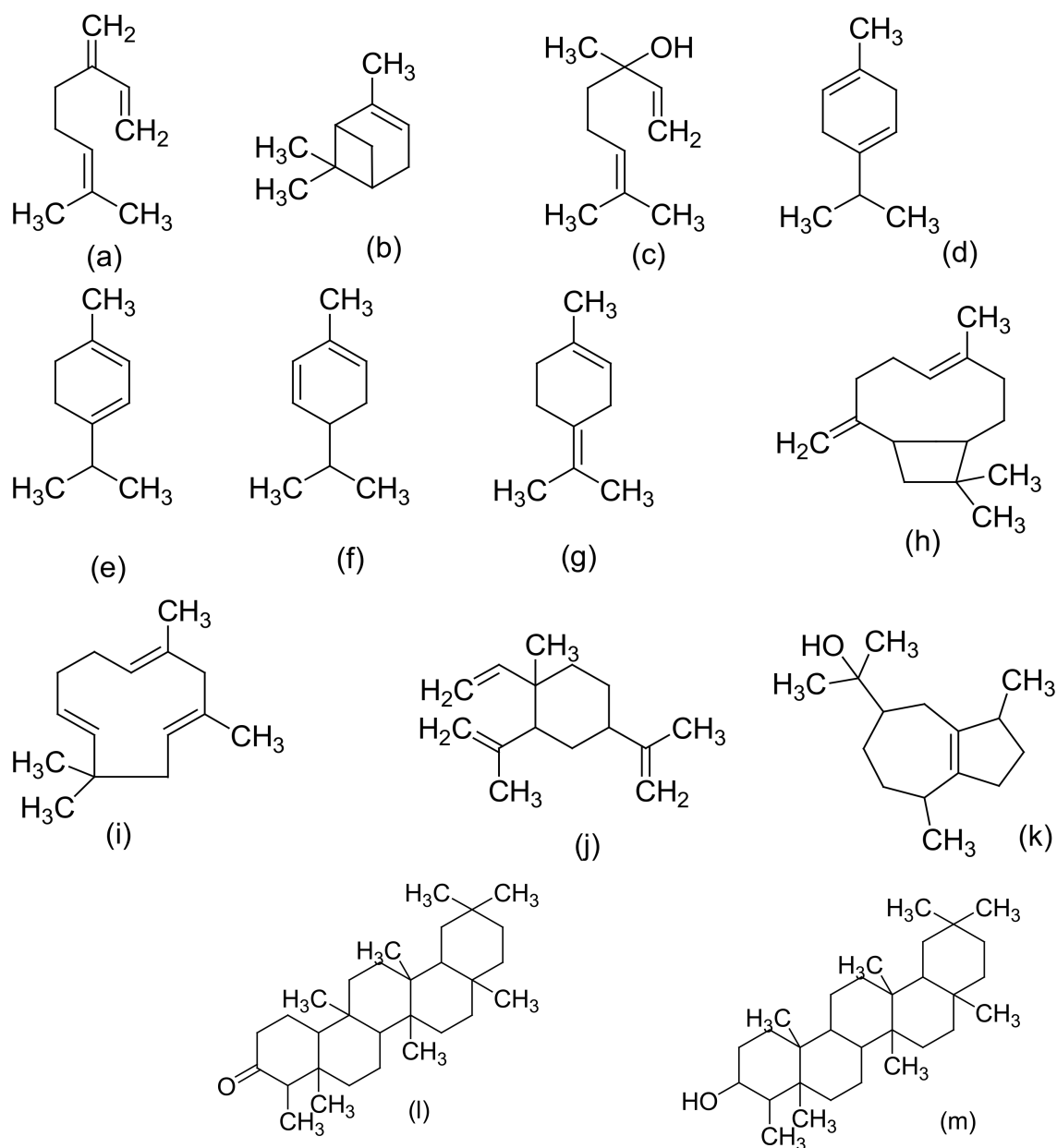
remove the co-extracted impurities for a high-purity medicinal product to be obtained [41]. A patent on the method for the isolation of herbal and cannabinoid medicinal extracts stated that the solubility of non-therapeutic substances (chlorophyll and waxy materials) is reduced when the solvent is selected from a group that includes acetonitrile, benzene, dichloromethane, diethyl ether, acetone, butanol, ethanol, chloroform, ethyl acetate, hexane, pentane, propanol, tetrahydrofuran, toluene, xylene, and various combinations of these solvents [41]. The International Conference on Harmonization (ICH) recommends the use of less toxic solvents in the manufacture of drug substances and dosage forms, and sets pharmaceutical limits for residual solvents in drug products [43]. Residual solvents pose risks to human health and are classified into three classes. Class 1 solvents (including carbon tetrachloride, benzene, and methyl chloroform) are regarded as human carcinogens and are environmentally hazardous [41]. Class 2 solvents include methanol and hexane, which are generally said to be limited, and they are possible causative agents of irreversible toxicity, such as neurotoxicity or teratogenicity [41]. Class 3 solvents (ethanol and ethyl acetate) are generally regarded as having a low toxic potential to humans [41]. Above all, ethanol is generally recognized as a safe (GRAS) solvent [41]. In a study by Brighenti et al., they compared the following four extraction techniques to obtain a high yield of medicinal cannabinoids: ultrasound-assisted extraction (UAE), microwave-assisted extraction (MAE), supercritical fluid extraction (SFE), and direct maceration (DM). They concluded that DM, with ethanol as the extraction solvent at room temperature for an overall time of 45 min, is the best extraction technique (in terms of a high yield) for non-psychoactive cannabinoids from hemp [44].

Over the last decade, compounds in *Cannabis* have been identified, isolated, and determined by various chromatographic techniques with different spectroscopic detection methods. *C. sativa* samples are analyzed for both legal and medicinal purposes [41]. Nevertheless, the knowledge of their exact composition remains very significant. In 2009, recommended methods for the identification and analysis of cannabis products were released by the United Nations Office on Drugs and Crime [45]. One notable technique that has been employed in identifying the diverse composition of the compounds found is high-performance liquid chromatography (HPLC) [41]. Spectroscopic approaches or methods are based on the variable absorbance or redirection of electromagnetic (EM) radiation by chemical bonds, resulting in the radiation or transition of the sample's atoms to a higher energy state [46]. Some advantages are attributed to these spectroscopic methods, such as permitting spatial measurements of metabolites and offering a global metabolic fingerprint of a sample with rapid spectral acquisition [46]. Some of these approaches/methods include Fourier transform infrared spectroscopy (FTIR), nuclear magnetic resonance (NMR) spectroscopy, mass spectrometry (MS), HPLC, gas chromatography–mass spectrometry (GC–MS), and liquid chromatography–mass spectrometry (LS–MS) [41,46]. Taking into account the recommended methods and the mandatory requirement of the Ministerial decree to use only chromatographic techniques coupled with mass spectrometric detection, cannabinoid concentrations and its stability in cannabis tea and cannabis oil, prepared from standardized flowering tops obtained from the Military Pharmaceutical Chemical Works of Florence, were studied by Pacifici et al. using easy and fast ultra-high performance liquid chromatography–tandem mass spectrometry (UHPLC–MS/MS) [9,10]. Table 2 is a summary of the reported extraction solvents, as well as the identification, isolation, and characterization methods of *Cannabis*.

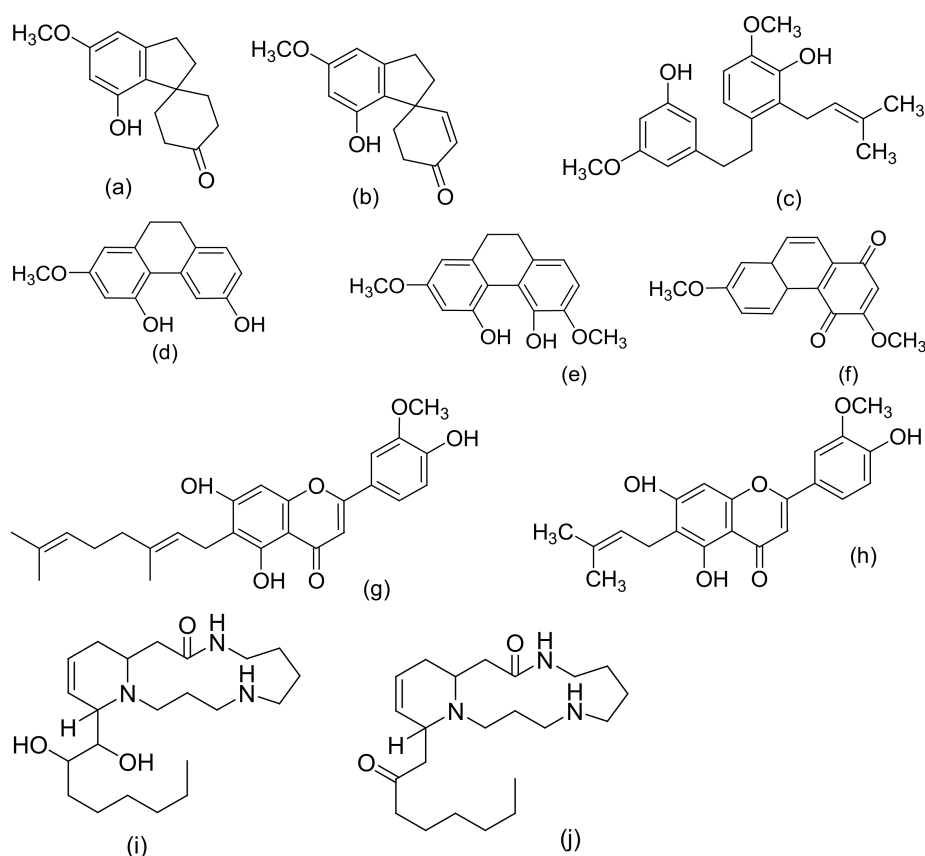


**Figure 2.** Chemical structures of major cannabinoids;  $\Delta^8$  THC, tetrahydrocannabinol (a);  $\Delta^9$ -THC, tetrahydrocannabinol (b); THCA, tetrahydrocannabinolic acid (c); CBDA, cannabidiolic acid (d); CBD, cannabidiol (e); CBDV, cannabidivarin (f); THCV, tetrahydrocannabivarin (g); CBGA, cannabigerolic acid (h); CBG, cannabigerol (i); CBN, cannabinol (j); CBNA, cannabinolic acid (k); CBC, cannabichromene (l); CBCA, cannabichromenic acid (m); CBL, cannabicyclol (n); CBLA, cannabicyclolic acid (o). All structures drawn by Odioka, using ChemDraw Ultra 8.0.





**Figure 3.** Chemical structures of some *Cannabis sativa* terpenes (Monoterpenes, Sesquiterpenes, and Triterpenoids); Myrcene (a),  $\alpha$ -Pinene (b), D-Linalool (c), Limonene (d),  $\alpha$ -Terpinene (e),  $\alpha$ -Phellandrene (f),  $\alpha$ -Terpinolene (g),  $\beta$ -Caryophyllene (h),  $\alpha$ -Caryophyllene (i),  $\beta$ -Elemene (j), Guaiol (k), Friedelin (l), and Epifriedelanol (m). All structures drawn by Odioka, using ChemDraw Ultra 8.0.



**Figure 4.** Chemical structures of some non-cannabinoid phenols (Spirans, phenanthrenes, flavonoids, alkaloids); Cannabispiran (a), Cannabispirone (b), Canniprene (c), Cannithrene I (d), Cannithrene II (e), Debinobin (f), Canniflavin A (g), Canniflavin B (h), Cannabisativine (i), and Anhydro-cannabisativine (j). All structures drawn by Odieka, using ChemDraw Ultra 8.0.

**Table 2.** Reported methods of identification, isolation, and characterization of *C. sativa*.

Extraction Solvent(s)	Matrix and Species	Identification, Isolation, and Purification Methods	Elucidation/ Analytical Techniques	Analytes	References
Phenolic Cannabinoids					
Methanol/ chloroform mixture.	<i>C. sativa</i> inflorescence	Qualitative, quantitative, and comparative derivatization study of cannabinoids	Fast GC-MS	CBDA, CBGA, CBG, CBD, THC, $\Delta^8$ -THC, CBC, THCA, THC	[47]
Supercritical fluid extraction	Plant biomass and medicinal <i>Cannabis</i> resin	Quantitative and qualitative analysis of cannabinoids	UHPLC-DAD and statistical analysis	CBDA, THCA, CBD, CBN, CBC, THC	[48]
Methanol/chloroform solvent mixture	<i>Cannabis</i> flower samples	Qualitative and quantitative measurement of cannabinoids	HPLC-DAD	$\Delta^9$ -THC, CBD, CBDA, THCA, CBN, CBG, CBGA, $\Delta^8$ -THC	[49]
Ethanol/ ethanolic extracts	(i) Lebanese <i>C. sativa</i> (ii) <i>Cannabis</i> (iii) Decarbo-xylated hemp leaves	(i) Purified by counter-current distribution and silica gel chromatography (ii) Florisil and silica gel column chromatography	GCMS, IR, and $^1\text{H}$ NMR comparison with an authentic sample	Cannabielsoin, (+)- <i>trans</i> -CBT and (−)- <i>trans</i> -CBT-OEt-C <sub>5</sub> (Cannibitriol), Cannabicitran, and Monomethylether of CBD	[13,50–52]

Table 2. Cont.

Extraction Solvent(s)	Matrix and Species	Identification, Isolation, and Purification Methods	Elucidation/ Analytical Techniques	Analytes	References
Sequential extraction (hexanes, CH <sub>2</sub> Cl <sub>2</sub> , EtOAc, EtOH, EtOH/H <sub>2</sub> O, and H <sub>2</sub> O)	(i) Bud and leaves of high-potency variety of <i>C. sativa</i>	(i) Silica gel VLC, C <sub>18</sub> -solid phase extraction (SPE), and HPLC (ii) VLC chromatography of hexane extract, TLC, flash silica gel, Sephadex LH-20 chromatography, and semipreparative reversed-phase (RP) and chiral HPLC	HRESIMS, 1D and 2D NMR, GC-MS	<i>epi</i> -bornyl Δ <sup>9</sup> -tetrahydrocannabinolate, α-terpenyl Δ <sup>9</sup> -tetrahydrocannabinolate, 4-terpenyl Δ <sup>9</sup> -tetrahydro-cannabinolate, α-cadinyl Δ <sup>9</sup> -tetrahydrocannabinolate, γ-eudesmyl Δ <sup>9</sup> -tetrahydro-cannabinolate, γ-eudesmyl cannabigerolate, 4-terpenyl cannabinolate, bornyl Δ <sup>9</sup> -tetrahydrocannabinolate, α-fenchyl Δ <sup>9</sup> -tetrahydro-cannabinolate, α-cadinyl cannabigerolate, Δ <sup>9</sup> -tetrahydro-cannabinol (Δ <sup>9</sup> -THC), Δ <sup>9</sup> -tetrahydrocannabinolic acid A (Δ <sup>9</sup> -THCA), Cannabinolic acid A (CBNA), and Cannabigerolic acid (CBGA), (±)-6,7- <i>trans</i> -epoxycannabigerolic acid, (+)-6,7- <i>cis</i> -epoxycannabigerolic acid, (±)-6,7- <i>cis</i> -epoxycannabigerol, 5'-Methoxy-cannabigerolic acid, 5'-methyl-4-pentylbiphenyl-2, 2', 6-triol, 7-methoxy-cannabispiron, (±)-6,7- <i>trans</i> -epoxycannabigerol, 8α-hydroxy-(−)-Δ <sup>9</sup> - <i>trans</i> -tetrahydrocannabinol, 8b-hydroxy-(−)-Δ <sup>9</sup> - <i>trans</i> -tetrahydro cannabinol, 8-oxo-(−)-Δ <sup>9</sup> - <i>trans</i> -tetrahydrocannabinol, 10α-hydroxy-Δ <sup>8</sup> -tetrahydrocannabinol, 10β-hydroxy-Δ <sup>8</sup> -tetrahydrocannabinol, 10a-α-hydroxy-10-oxo-Δ <sup>8</sup> -tetrahydrocannabinol, (±)-4-acetoxycannabichromene, (±)-3''-hydroxy-Δ(4'', 5'')-cannabichromene, (−)-7-hydroxycannabichromane, (−)-7- <i>R</i> -cannabicoumaronic acid A, 5-acetyl-4-hydroxycannabigerol, 4-acetoxy-2-geranyl-5-hydroxy-3- <i>n</i> -pentylphenol, 8-hydroxycannabinol, 8-hydroxycannabinolic acid A, and 2-geranyl-5-hydroxy-3- <i>n</i> -pentyl-1, 4-benzoquinone, (±)-4-acetoxycannabichromene, (±)-3''-hydroxy-Δ <sup>4''</sup> -cannabichromene, (−)-7-hydroxycannabichromane, 8-hydroxycannabinol, 8-hydroxy cannabinolic acid, 10S-hydroxy-cannabinol, 9b,10b-epoxyhexahydrocannabinol, 9a-hydroxyhexahydrocannabinol, 10a-hydroxyhexahydrocannabinol, and 10aRhdroxyhexahydrocannabinol	[31,53–55]

Table 2. Cont.

Extraction Solvent(s)	Matrix and Species	Identification, Isolation, and Purification Methods	Elucidation/ Analytical Techniques	Analytes	References
Hexane extract	(i) <i>C. sativa</i> (air-dried and powdered buds) (ii) high-potency variety of <i>C. sativa</i> (iii) Illicit Cannabis samples (iv) <i>C. sativa</i> inflorescence (strain CINRO) (v) Lebanese <i>C. sativa</i> (vi) Hemp (vii) Nepalese and Brazilian <i>C. Sativa</i> .	(i) Column chromatography using silica or alumina, TLC, then fractional distillation and preparative C <sub>18</sub> HPLC (ii) VLC (vacuum liquid chromatography) silica gel column chromatography, C <sub>18</sub> HPLC and chiral HPLC (iii) Flash silica gel chromatography (iv) Florisil column chromatography	<sup>1</sup> H NMR, <sup>13</sup> C NMR (2D NMR) HRESIMS, circular dichroism (CD), UV, LC-HRMS, MS/MS, GC-MS, and confirmation by phytochemical transformations.	Δ <sup>9</sup> -THC, Δ <sup>9</sup> -THC aldehyde, Cannabinoid esters, Cannabisol, Δ <sup>9</sup> - <i>trans</i> -tetrahydrocannabiphorol, Δ <sup>9</sup> - <i>trans</i> -tetrahydrocannabihexol, Cannabidiol, Cannabidiolol, Cannabidiolol (CBDH) and Cannabidiolol (CBDP), Cannabitwinol, Cannabinodivirin and cannabinodiol (CBND), Cannabichromene (CBC), 9a-hydroxyhexahydrocannabinol, 7-oxo-9a-hydroxyhexahydrocannabinol, 10a-hydroxyhexahydrocannabinol, and 10a- <i>R</i> -hydroxyhexahydrocannabinol	[53,56–60]
Ethyl acetate extracts	<i>Cannabis</i> resins, tinctures, and leaves	-	GC-MS and GC-FID analysis	Δ <sup>9</sup> -THC and Δ <sup>9</sup> -THCA	[61]
Petroleum ether	(i) Cannabis tincture of Pakistani origin (ii) Brazilian <i>C. sativa</i> (iii) Cannabis leaves and flowers (Maryland and Czechoslovakian origin) (iv) Congo <i>C. sativa</i> (v) Hashish and Cannabis sativa	(i) Silicic acid column chromatography (ii) Silica gel and Florisil chromatography, preparative TLC	IR, NMR, MS, GC-MS confirmed by synthesis	Δ <sup>9</sup> -THCV, Δ <sup>9</sup> -THCO or Δ <sup>9</sup> -THC, Δ <sup>9</sup> -THC (Δ <sup>9</sup> -THCA), Cannabisoic acid A (CBEEA), Cannabisoic acid B, and Cannabicyclovarin (CBLV)	[61–67]
Benzene	(i) Fresh <i>C. sativa</i> leaves from Thailand (ii) Fresh tops and leaves of <i>C. sativa</i> (iii) Hemp	Polyamide and silica gel column chromatography	IR, UV, NMR, and comparing UV spectrum with that of derivatives	Δ <sup>9</sup> -THCVA, CBDV, THCV, CBCV, Cannabigerovarin CBGV, cannabigerovarinic acid (CBGVA), CBDA, cannabidivarinic acid (CBDVA), Cannabicyclic acid (CBLA), and Cannabichromenic acid (CBCA)	[49,68,69]
Acetone extract	(i) Leaves of <i>C. sativa</i> (Mexican strain) (ii) Wax of decarboxylated aerial parts of <i>C. sativa</i> (Carma strain) (iii) Cannabis variety (carmagnola)	(i) Silica gel column chromatography (ii) Silica and alumina column chromatography, followed by normal phase (NP)-HPLC. (iii). Flash chromatography, over reverse-phased C <sub>18</sub> silica gel followed by normal-phase HPLC	FAB-MS, <sup>1</sup> H-NMR, <sup>13</sup> C-NMR, and ESI-MS semisyn-thesis.	Cannabigerolic acid (CBGA), dihydrocannabigerol derivative (camagerol), Sesquicannabi-gerol, Cannabimovone, and Cannabioxepane	[70–73]
Essential/volatile oils					
Methanol dilutions	<i>Cannabis sativa</i> oil samples	Separation/quantitation of cannabinoids	Fast-GC-FID	CBD, CBN, and THC	[74]
Essential oil	Fresh <i>C. sativa</i> L. from India	Fractional distillation and chromatography over alumina.	GC-MS and physico-chemical analyses	α-terpinene, β-phellandrene, γ-terpinene, α-terpinolene, α-pinene, β-pinene, camphene, linalool, α-terpineol, terpinene-4-ol, linalool oxide, and sabinene hydrate	[13]
Volatile/essential oils	(i) <i>Cannabis</i> (Dutch and Turkish) (ii) Fresh leaves of <i>Cannabis sativa</i> and <i>Cannabis indica</i>	(i) Hydrodistillation or through nitrogen extraction (ii) Hydrodistillation, steam distillation, and supercritical fluid extraction	Capillary gas chromatography, GC-MS analysis	cis-β-ocimene, trans-β-ocimene, α-phellandrene, D <sub>3</sub> -carene, Δ <sup>4</sup> -carene, sabinene and α-thujene, caryophyllene, humulene, <i>trans</i> -β-bergamotene, <i>cis</i> -β-farnesene, δ-limonene, caryophyllene oxide, linalool, <i>trans</i> -α-bergamotene, <i>cis</i> -β-farnesene, menthol, eucalyptol, and Carvone.	[13,75]
Essential oil	Cannabis (marijuana fresh and dried buds)	Steamdistillation	GC-MS and GC-FID	Ipsdienol, <i>cis</i> -carveol, and <i>cis</i> -sabinene hydrate	[76]

Table 2. Cont.

Extraction Solvent(s)	Matrix and Species	Identification, Isolation, and Purification Methods	Elucidation/ Analytical Techniques	Analytes	References
Essential oil	<i>C. sativa</i> resin	Minor terpenic component analysis	GC–MS and GC retention time	$\alpha$ -gurjunene, $\alpha$ -bisabolol, $\alpha$ -cedrene, $\alpha$ -cubebene, $\delta$ -cadinene, epi- $\beta$ -santalene, farnesol, $\gamma$ -cadinene, $\gamma$ -elemene, $\gamma$ -eudesmol, guaiol, (E,E)- $\alpha$ -farnesene, (Z)- $\beta$ -farnesene, and farnesyl acetone	[77]
Essential oil	<i>Cannabis</i>	Steam distillation and silica gel chromatography	GC, GC–MS	eugenol, methyleugenol, iso-eugenol, trans-anethol, and <i>cis</i> -anethol (simple phenols)	[78]
Essential oil	<i>C. sativa</i>	Column chromatography of the essential oil	GC and GC–MS analyses	Iso-caryophyllene, $\beta$ -selinene, selina-3,7(11)-diene, and selina-4(14),7(11)-diene	[13,79]
Non-cannabinoid phenols					
Ethanol/ ethanolic extract	(i) South African <i>Cannabis</i> variant (ii) Saudi Arabia hashish (iii) Leaves of <i>C. sativa</i> (iv) High-potency <i>Cannabis</i> variety grown in Mississippi (v) Hemp pectin (vi) <i>Cannabis</i> roots (vii) Roots, stem, and leaves of a Mexican variant of <i>Cannabis sativa</i>	(i) Partitioning and chromatography on silica and polyamide columns (ii) Normal and reversed phase chromatographic techniques (iii) Purification by macro reticular resin, silica gel column chromatography, and Sephadex-LH-20 (iv) TLC, chromatography over alumina, and recrystallization (v) Partitioning and TLC eluted with chloroform:acetone:ammonia (1:1:1) (vi) Series of acid–base extractions and silica-gel chromatography followed by crystallization of the alkaloid from acetone	IR, GCMS, UV, 1D NMR (1H NMR, 13C NMR) and 2DNMR (COSY, HSQC, HMBC, and ROESY), ESI–MS, comparison with authentic samples, X-ray crystallography, and semi-synthesis	$\beta$ -cannabispiranol, <i>b</i> -cannabispinol, 5-hydroxy-7-methoxyindan-1-spiro-cyclohexane, 7-hydroxy-5-methoxyindan-1-spiro-cyclohexane, and 5,7-dihydroxyindan-1-spiro-cyclohexane, Cannabispirketal and the glycoside, <i>a</i> -cannabispiranol-4'-O- $\beta$ -glucopyranose, 3,4',5-trihydroxy-dihydrostilbene, 4,5-dihydroxy-2,3,7-trimethoxy-9,10-dihydrophenanthrene, 4-hydroxy-2,3,6,7-tetramethoxy-9,10-dihydrophenanthrene and 4,7-dimethoxy-1,2,5-trihydroxyphenanthrene, Rutin, friedelin (friedelan-3-one) and epifriedelanol, Anhydrocannabisativine and cannabisativine, $\alpha$ , $\alpha'$ -dihydro-3',4,5'-trihydroxy-4'-methoxy-3-isopentenylstilbene, $\alpha$ , $\alpha'$ -dihydro-3,4',5'-trihydroxy-4-methoxy-2,6-diisopentenylstilbene, $\alpha$ , $\alpha'$ -dihydro-3',4,5'-trihydroxy-4'-methoxy-2',3-diisopentenylstilbene, $\alpha$ , $\alpha'$ -dihydro-3,4',5'-trihydroxy-4,5'-diisopentenylstilbene, and combretastatin B-2	[32,33,55,80–84]
Benzene	Dried leaves of Japanese cannabis	Chromatographed on a polyamide column followed by silica gel chromatography	IR, <sup>1</sup> H NMR, MS, UV.	Cannabispinol and acetyl Cannabispinol	[85]
Acetone	<i>C. sativa</i> (CARMA)	Gravity column chromatography on silica gel and purified by crystallization from ether and HPLC	Identified according to its physical and spectroscopic properties and synthesis	Debinoben (1,4-phenanthrenequinone)	[86]

Table 2. Cont.

Extraction Solvent(s)	Matrix and Species	Identification, Isolation, and Purification Methods	Elucidation/Analytical Techniques	Analytes	References
Sequential extraction (Hexane, EtOAc, CH <sub>2</sub> Cl <sub>2</sub> , EtOH, EtOH/H <sub>2</sub> O, and H <sub>2</sub> O)	High-potency variety of <i>C. sativa</i> (Mississippi)	VLC, silica gel column chromatography, and RP-HPLC	1D and 2D NMR, IR analysis	acetoxyl-6-geranyl-3- <i>n</i> -pentyl-1,4-benzoquinone, 4,5-dihydroxy-2,3,6-trimethoxy-9,10-dihydrophenanthrene, 4-hydroxy-2,3,6,7-tetramethoxy-9,10-dihydrophenanthrene, 4,7-dimethoxy-1,2,5-trihydroxyphenanthrene, Cannflavin C and $\beta$ -sitosteryl-3- <i>O</i> - $\beta$ -D-glucopyranoside-2'- <i>O</i> -palmitate, $\alpha$ -cannabispiranol, Chrysoeriol, 6-prenylapigenin, and Cannflavin A and $\beta$ -acetyl cannabispiranol	[55]
Hexane extract	Leaves of <i>Cannabis sativa</i>	Isolation by normal-phase chromatography followed by C <sub>18</sub> -HPLC	NMR and ESI-MS analysis	Prenylspiropinone and 7- <i>O</i> -methyl-cannabispinone	[55,87]
Dichloro-methane extract	(i) Decarboxylated <i>C. sativa</i> hemp (ii) Thai <i>Cannabis sativa</i> leaves (iii) Panamanian variety of cannabis	C <sub>18</sub> flash chromatography, followed by silica gel gravity column chromatography and HPLC	HR-ESIMS and NMR ( <sup>1</sup> H, <sup>13</sup> C, HSQC, and HMBC) data, X-ray crystallography, and confirmation by hydrogenation	Isocannabispiradienone and <i>a</i> -Cannabispiranol, Cannabispira-dienone, and Cannabidihydro-phenanthrene (Cannithrene1 and Cannithrene2)	[88,89]
Methanol/methanolic extract	(i) Branches and leaves of hemp (ii) Pollen grains of Mexican variety of <i>C. sativa</i> (iii) Dried leaves of South African and Indian cannabis sativa (iv) Panamanian variant of <i>C. sativa</i> (v) Leaves and branches of <i>C. sativa</i>	(i) TLC, silica gel column chromatography, normal-phase preparative HPLC, and Sephadex LH-20 column chromatography (ii) Partitioning, silica gel chromatography, Sephadex LH-20 chromatography, semi preparative LC	MS, 1D and 2D NMR, UV experiments, IR, X-ray crystallography and confirmation by total synthesis	Rutin, Quercetin-3- <i>O</i> - $\alpha$ -L-rhamnoside, kaempferol-3- <i>O</i> - $\alpha$ -L-rhamnoside, apigenin-7- <i>O</i> - $\alpha$ -L-rhamnoside, apigenin-7- <i>O</i> - $\beta$ -D-glucopyranoside, luteolin-7- <i>O</i> - $\beta$ -D-glucopyranoside, 1,3,6,7-tetrahydroxyl-2-C- $\beta$ -D-glucopyranosyl xanthone, vitexin, orientin, apigenin-6,8-di-C- $\beta$ -D-glucopyranoside, vitexin-2''- <i>O</i> - $\alpha$ -L-rhamnoside, orientin-2''- <i>O</i> - $\beta$ -D-glucopyranoside, quebrachitol, inositol and uracil, kaempferol-3- <i>O</i> -sophoroside (196) and quercetin-3- <i>O</i> -sophoroside, cannabispinone, cannabispirenone, Cannabispiran, Isocannabispiran Canniprene, Cannabistilbene I and Cannabistilbene II, and 2,3,5,6-tetramethoxy 9,10-dihydrophenanthrene-dione	[90–94]
Mixture of hydro-alcoholic and organic solvents	<i>C. sativa</i> inflorescence (Ferimon, Uso-31, Felina 32, and Fedora 17 cultivars)	Metabolic and chemical profiling to identify and quantify compounds of different classes	NMR, GC-MS, UHPLC, and HPLC-PDA	Sugars, organic acids, amino acids, cannabinoids, terpenoids, phenols, tannins, flavonoids (Quercetin, Naringenin, and Naringin) and biogenic amines	[35,37]
Diethyl ether	Stem exudate (greenhouse-grown <i>C. sativa</i> )	TLC and acid hydrolysis of the exudate	<sup>1</sup> H NMR and GC-MS	Phloroglucinol $\beta$ -D-glucoside	[95]

#### 4.3. Biological Evaluation/Potentials of *C. sativa*

From the biological point of view, the psychoactive cannabinoids reported include  $\Delta^9$  THC, cannabinol (CBN), and cannabiniol (CBND), while cannabidiol (CBD) and other cannabinoids are non-psychoactive [8,11]. THC is the major psychoactive component and the toxicity of this metabolite of *Cannabis* is the most studied [11,28]. Its psychoactive component decreases in the order of inflorescence (the flower), leaves, stem, roots, and seeds, respectively [8]. The interest in the potential medical use of cannabis and cannabinoids rose significantly in the 1990s, following the discovery of the endocannabinoid (eCB) system in mammals [7]. The physiological effects of cannabinoids are exerted through



various receptors, such as the cannabinoid receptors (CB1 and CB2), adrenergic receptors, and the recently discovered GPCRs (GPR<sub>55</sub>, GPR<sub>3</sub> and GPR<sub>5</sub>) [8]. Historically, each part of the *Cannabis* plant is indicated mostly for pain killing, inflammation, and for mental illnesses. For example, the *Cannabis* root has been recommended for treating fever, inflammation, gout, arthritis, and joint pain, as well as skin burns, hard tumors, postpartum hemorrhage, difficult child labor, sexually transmitted diseases, gastrointestinal activity, and infections [40]. *Cannabis* has also been used to treat asthma, epilepsy, fatigue, glaucoma, insomnia, nausea, pain, and rheumatism, as well as being used as appetite stimulant and a digestive aid [7,11,13]. Since concentrations above 0.05% are pharmacologically interesting, *Cannabis* inflorescence and leaf material may contain sufficient cannabinoids, mono- and sesquiterpenoids, and flavonoids for therapeutic applications [11]. Cannabis terpenoids and flavonoids, mainly myrcene, limonene, pinene,  $\beta$ -caryophyllene, and cannflavin A, act in synergy with cannabinoids to induce pharmacological effects [7]. It was proven that these compounds, which are synthesized in the aerial parts of the plant, enhance CBD's anti-inflammatory effects and antagonize THC dysphoric action [96]. Cannabidiol (CBD) and Cannabidavarin (CBDV) (neutral cannabinoids) have been reported to have the therapeutic potential for the treatment of epilepsy (focal seizures), as well as treating nausea and vomiting [97,98]. Conversely, THC and CBN have been found to be active in lowering intraocular pressure, and can be applied in all cases of glaucoma that are resistant to other therapies [9]. Cannflavin A and B are also notable flavonoids (prenylflavonoids) with medicinal potentials, such as their anti-inflammatory, anti-neoplastic, antioxidant, neuro-protective, anti-parasitic, and anti-viral effects [99]. Table 3, below, shows a summary of the reported bioactivities (biological potentials) of the bioactive compounds present in *Cannabis sativa*.

**Table 3.** Summary of reported bioactivities associated with isolated compounds and essential oils from *Cannabis sativa*.

Isolated Bioactive Compound	Bioactivity/Uses	References
Tetrahydrocannabinol THC	Antioxidant, anti-pruritic, and anti-inflammatory effects	[29,100]
Cannabidiol CBD	Anti-convulsive, anti-inflammatory, immunosuppressive properties, antioxidant, and anti-psychotic effects	[101–103]
Cannabigerol CBG	Anti-fungal effects, anti-cancer, anti-depressant, mild anti-hypertensive agent, analgesic, and anti-erythemic effects	[29,104]
Cannabichromene CBC	Anti-inflammatory and analgesic	[29]
Cannabinol CBN	Sedative, anti-convulsant, anti-inflammatory, antibiotic, and anti-MRSA activity	[29]
Tetrahydrocannabivarin THCV	Anti-convulsant	[29]
Tetrahydrocannabinolic acid THCA	Immunomodulatory, anti-inflammatory, neuroprotective, anti-neoplastic activity, and antiemetic effects	[29,105]
Cannabidavarin CBDV	Anti-convulsant (anti-epileptic) properties and anti-emetic properties	[106,107]
Cannabidiolic acid CBDA	Anti-emetic effects	[104,108–110]
$\beta$ -Myrcene	Anti-inflammatory and analgesic sedative agent	[7,29,111]

Table 3. Cont.

Isolated Bioactive Compound	Bioactivity/Uses	References
<i>D</i> -Limonene	Strongly anxiolytic, anti-depressant, antibiotic, and anti-cancer agent	[7,29]
$\beta$ -Ocimene	Anti-convulsant activity, anti-fungal activity, anti-tumor activity, and pest resistance	[112,113]
$\gamma$ -Terpinene	Anti-inflammatory activity, antioxidant, and anti-proliferative activity	[114,115]
$\alpha$ -Terpinene	Antioxidant	[29]
$\alpha$ -Pinene	Anti-inflammatory, bronchodilator, anti-microbial, and anxiolytic effects	[7,11,29,116]
Linalool	Analgesic and anticonvulsant, anxiolytic, anti-depressant, anti-glutamatergic, anti-leishmanial activity, anticancer agent, anti-nociceptive, and anti-depressant effects	[111,117–119]
$\alpha$ -Phellandrene	Anti-nociceptive, anti-depressant, anti-arthritic and allergic, and anti-hyperalgesic effects	[120–122]
Terpinolene	Anti-fungal and larvicidal, anti-nociceptive, anti-inflammatory antioxidant, and anti-cancer effects	[123,124]
$\beta$ -Caryophyllene	Cardio-protective, hepato-protective, gastro-protective, neuro-protective, nephro-protective, antioxidant, anti-inflammatory, anti-microbial, anti-pruritic, and immunomodulatory activities	[7,125–127]
Caryophyllene Oxide	Anti-fungal, insecticidal/anti-feedant, and anti-platelet effects	[29]
$\beta$ -Elemene	Anti-cancer and anti-tumor	[128]
Guaiol	Anti-inflammatory, antioxidant, anti-cancer anti-rheumatic, antiseptic, diaphoretic, diuretic, and laxative effects	[29,129]
Friedelin	Anti-inflammatory, anti-pyretic, and anti-tuberculosis agent	[130,131]
Epifriedelanol	Antioxidant	[132]
Cannflavin A and B	Anti-inflammatory, neoplastic, antioxidant, neuroprotective, anti-parasitic, and anti-viral agent	[4,7,29,99]
Apigenin	Anxiolytic and estrogenic properties, anti-tumor, antioxidant, anti-inflammatory, anti-osteoporosis, and immune regulation effects	[4,133]
Vitexin and Isovitexin	Antioxidant, anti-cancer, anti-inflammatory, anti-diabetic, anti-microbial, anti-viral, anti-hyperalgesic, and neuroprotective effects	[134]
Quercetin	Anti-cancer/anti-proliferator, antioxidative/anti-aging, anti-viral, anti-inflammatory, cardio-protective, skin-protective, anti-coagulant, and anti-platelet effects	[135]
Luteolin	Neuroprotective effects, anti-inflammatory, and antioxidant effects	[136]
Lignans	Antioxidant, anti-viral, anti-diabetic, anti-tumorigenic, and anti-obesity activities	[4]

Cannabis female flowering tops can be simply administered through commercially available vaporizers (e.g., Micro Vape, G Pen Herbal Vaporizer, and Volcano), buccal sprays (e.g., Sativex), oral capsules (e.g., Cannador), decoctions, or oils [7]. Only cannabis use through oral or inhalatory administration is allowed. Smoking reduces the bioavailability of cannabis ingredients by 40%, and its complete combustion can cause lung diseases and airway obstructions [7]. Homemade decoctions and pharmacy oils are currently the most widespread cannabis formulations in Europe, making the standardization of preparation difficult [7]. Cannabis pharmacological action is dose-dependent and can induce many adverse effects (AEs), principally related to THC, due to unintentional overdosing [7]. The typical symptoms of cannabis acute intoxication that have been reported are dizziness, confusion, tachycardia, postural hypotension, dysphoria, panic depression, hallucinations, allergic reactions, vomiting, and diarrhea [7,137,138]. Furthermore, withdrawal symptoms, such as irritability, aggression, anxiety, insomnia, decreased appetite, tremors, sweating, and headaches may appear after the abrupt cessation of the long-term administration of high doses of cannabis [7]. According to the ICH efficacy and safety guidelines, it is recommended to start with low doses and increase quantities after a satisfactory period of clinic evaluation, depending on the pharmacological effects and the possible adverse effects [139].

In the current COVID-19 pandemic, scientists are repurposing medicines (identifying new therapeutic use(s) of existing drugs) known for their biological potential (anti-viral or anti-inflammatory properties) to tackle the global issue and similar future viruses [140]. They have hypothesized that CBD could be used as an anti-viral agent [141] or anti-inflammatory [142,143] tool, or to inhibit pulmonary fibrosis in COVID-19 patients [144]. In addition, the known growing evidence of the anxiolytic effects of CBD have also been hypothesized to be used as a therapeutic option to treat long-lasting COVID-19-related anxiety and PTSD [145], which is likely to be a significant issue of the pandemic.

## 5. Conclusions

With the recent evaluation, acceptance, and legalization of Cannabis products for therapeutic purposes, researchers, particularly in the field of natural products, are challenged to improve and standardize the extraction and characterization of the bioactive compounds from *Cannabis sativa*. Despite various reports of its economic and therapeutic values, it is legal in a handful of jurisdictions (Uruguay, Canada, some US states, and parts of Africa). Presently, Cannabis remains illegal in several countries. This review summarized the biological potential and the techniques for the extraction, isolation, and characterization of *Cannabis sativa* compounds, and it describes the effectiveness of the various parts of the herb in pharmacotherapy. The usage of *C. sativa* roots and stem barks in present-day medical research, and the development of new Cannabis-based medicines or products, in contrast to the flowering part only, is highly recommended because they can be exploited for medicine and other uses. In addition, Cannabis-based pharmaceutical products must undergo long purification processes to eliminate unwanted components such as chlorophyll and residual organic solvents. The use of standardized reagents is also very crucial in the analytical studies of *C. sativa*. Furthermore, future research should seek to clarify the factors responsible for the complexity of *C. sativa* extracts in terms of their chemical compositions, the physical properties of their active ingredients, and their liability to photochemical oxidation.

**Author Contributions:** Conceptualization, A.E.O., A.O.O., G.U.O., O.O.O., M.G. and Y.S.H.; methodology, A.E.O., G.U.O., O.O.O., M.G., Y.S.H. and A.O.O.; validation, A.E.O., M.G., Y.S.H. and A.O.O.; data curation, A.E.O.; writing—original draft preparation, AEO; writing—review and editing, A.E.O., A.O.O., O.O.O., G.U.O., M.G. and Y.S.H.; supervision, A.O.O., G.U.O., O.O.O., M.G. and Y.S.H.; project administration, A.O.O.; funding acquisition, A.E.O. and A.O.O. All authors have read and agreed to the published version of the manuscript.

**Funding:** This research was funded by National Research Foundation (NRF), grant numbers 130205 and 137963.

**Data Availability Statement:** Not applicable.

**Acknowledgments:** The authors acknowledge the Directorate of Research and Innovation, Walter Sisulu University (WSU), South Africa and Govan Mbeki Research and Development Center, University of Fort Hare, South Africa.

**Conflicts of Interest:** The authors declare no conflict of interest.

## References

1. Sofowora, A.; Ogunbodede, E.; Onayade, A. The role and place of medicinal plants in the strategies for disease prevention. *Afr. J. Tradit. Complement. Altern. Med.* **2013**, *10*, 210–229. [[CrossRef](#)]
2. Choudhary, N.; Siddiqui, M.; Bi, S.; Khatoun, S. Variation in preliminary phytochemicals screening of *Cannabis sativa* L. leaf, stem and root. *Int. J. Pharmacogn.* **2014**, *1*, 516–519.
3. Bandar, H.; Hijazi, A.; Rammal, H.; Hachem, A.; Saad, Z.; Badran, B. Techniques for the extraction of bioactive compounds from Lebanese *Urtica Dioica*. *Am. J. Phytomed. Clin. Ther.* **2013**, *1*, 507–513.
4. Andre, C.M.; Hausman, J.F.; Guerriero, G. *Cannabis sativa*: The plant of the thousand and one molecules. *Front. Plant Sci.* **2016**, *7*, 19. [[CrossRef](#)] [[PubMed](#)]
5. Elsohly, M.A.; Radwan, M.M.; Gul, W.; Chandra, S.; Galal, A. Phytochemistry of *Cannabis sativa* L. *Phytocannabinoids* **2017**, *103*, 1–36.
6. Baldino, L.; Scognamiglio, M.; Reverchon, E. Supercritical fluid technologies applied to the extraction of compounds of industrial interest from *Cannabis sativa* L. and to their pharmaceutical formulations: A review. *J. Pharm. Fluids* **2020**, *165*, 104960. [[CrossRef](#)]
7. Brunetti, P.; Pichini, S.; Pacifici, R.; Busardò, F.P.; del Rio, A. Herbal preparations of medical cannabis: A vademecum for prescribing doctors. *Medicina* **2020**, *56*, 237. [[CrossRef](#)]
8. Lewis, M.M.; Yang, Y.; Wasilewski, E.; Clarke, H.A.; Kotra, L.P. Chemical profiling of medical Cannabis extracts. *ACS Omega* **2017**, *2*, 6091–6103. [[CrossRef](#)] [[PubMed](#)]
9. Pacifici, R.; Marchei, E.; Salvatore, F.; Guandalini, L.; Busardò, F.P.; Pichini, S. Evaluation of cannabinoids concentration and stability in standardized preparations of cannabis tea and cannabis oil by ultra-high performance liquid chromatography tandem mass spectrometry. *Clin. Chem. Lab. Med.* **2017**, *55*, 1555–1563. [[CrossRef](#)]
10. Pacifici, R.; Marchei, E.; Salvatore, F.; Guandalini, L.; Busardò, F.P.; Pichini, S. Evaluation of long-term stability of cannabinoids in standardized preparations of cannabis flowering tops and cannabis oil by ultra-high-performance liquid chromatography tandem mass spectrometry. *Clin. Chem. Lab. Med.* **2018**, *56*, 94–96. [[CrossRef](#)] [[PubMed](#)]
11. Jin, D.; Dai, K.; Xie, Z.; Chen, J. Secondary metabolites profiled in cannabis inflorescences, leaves, stem barks, and roots for medicinal purposes. *Sci. Rep.* **2020**, *10*, 1–14.
12. Farag, S.; Kayser, O. The Cannabis plant: Botanical aspects. In *Handbook of Cannabis and Related Pathologies*; Academic Press: Cambridge, MA, USA, 2017; pp. 3–12.
13. Radwan, M.M.; Chandra, S.; Gul, S.; Elsohly, M.A. Cannabinoids, Phenolics, Terpenes and Alkaloids of Cannabis. *Molecules* **2021**, *26*, 2774. [[CrossRef](#)]
14. Stevens, C.J.; Murphy, C.; Roberts, R.; Lucas, L.; Silva, F.; Fuller, D.Q. Between China and South Asia: A Middle Asian corridor of crop dispersal and agricultural innovation in the bronze age. *Holocene* **2016**, *26*, 1541–1555. [[CrossRef](#)] [[PubMed](#)]
15. Chandra, S.; Lata, H.; Khan, I.A.; Elsohly, M.A. *Cannabis sativa* L.: Botany and horticulture. In *Cannabis sativa* L.—*Botany and Biotechnology*; Springer: Berlin/Heidelberg, Germany, 2017; pp. 79–100.
16. Duvall, C.S. A brief agricultural history of Cannabis in Africa, from prehistory to canna-colony. *Echogéo* **2019**, *48*, 1–25. [[CrossRef](#)]
17. Nsuala, B.N.; Enslin, G.; Viljoen, A. “Wild Cannabis”: A review of the traditional use and phytochemistry of *Leonotis leonurus*. *J. Ethnopharmacol.* **2015**, *174*, 520–539. [[CrossRef](#)] [[PubMed](#)]
18. Bonini, S.A.; Premoli, M.; Tambaro, S.; Kumar, A.; Maccarinelli, G.; Memo, M.; Mastinu, A. *Cannabis sativa*: A comprehensive ethnopharmacological review of a medicinal plant with a long history. *J. Ethnopharmacol.* **2018**, *227*, 300–315. [[CrossRef](#)] [[PubMed](#)]
19. Dutch Passion. Understanding Cannabis Phenotypes, Genotypes and Chemotypes. 2020. Available online: <https://dutch-passion.com/en/blog/understanding-cannabis-phenotypes-genotypes-and-chemotypes-n980> (accessed on 19 February 2022).
20. Hanuš, L.O.; Meyer, S.M.; Muñoz, E.; Tagliatalata-Scafati, O.; Appendino, G. Phytocannabinoids: A unified critical inventory. *Nat. Prod. Rep.* **2016**, *33*, 1357–1392. [[CrossRef](#)] [[PubMed](#)]
21. Appendino, G.; Chianese, G.; Tagliatalata-Scafati, O. Cannabinoids: Occurrence and medicinal chemistry. *Curr. Med. Chem.* **2011**, *18*, 1085–1099. [[CrossRef](#)] [[PubMed](#)]
22. Hill, A.J.; Williams, C.M.; Whalley, B.J.; Stephens, G.J. Phytocannabinoids as novel therapeutic agents in CNS disorders. *Pharmacol. Ther.* **2012**, *133*, 79–97. [[CrossRef](#)]
23. Lewis-Bakker, M.M.; Yang, Y.; Vyawahare, R.; Kotra, L.P. Extractions of medical Cannabis cultivars and the role of decarboxylation in optimal receptor responses. *Cannabis Cannabinoid Res.* **2019**, *4*, 183–194. [[CrossRef](#)] [[PubMed](#)]

24. Elsohly, M.; Gul, W. Constituents of *Cannabis sativa*. *Handb. Cannabis* **2014**, *3*, 1093.
25. Elzinga, S.; Fishedick, J.; Podkolinski, R.; Raber, J.C. Cannabinoids and terpenes as chemotaxonomic markers in Cannabis. *Nat. Prod. Chem. Res.* **2015**, *3*, 1–9.
26. Hazekamp, A.; Tejkalová, K.; Papadimitriou, S. Cannabis: From cultivar to chemovar II—A metabolomics approach to cannabis classification. *Cannabis Cannabinoid Res.* **2016**, *1*, 202–215.
27. Lynch, R.C.; Vergara, D.; Tittes, S.; White, K.; Schwartz, C.; Gibbs, M.J.; Ruthenburg, T.C.; Decesare, K.; Land, D.P.; Kane, N.C. Genomic and chemical diversity in Cannabis. *Crit. Rev. Plant Sci.* **2016**, *35*, 349–363. [[CrossRef](#)]
28. Pollastro, F.; Minassi, A.; Fresu, L.G. Cannabis phenolics and their bioactivities. *Curr. Med. Chem.* **2018**, *25*, 1160–1185.
29. Russo, E.B.; Marcu, J. Cannabis pharmacology: The usual suspects and a few promising leads. *Adv. Pharmacol.* **2017**, *80*, 67–134.
30. Upton, R.; Elsohly, M. (Eds.) *Cannabis Inflorescence: Cannabis Spp.; Standards of Identity, Analysis, and Quality Control*; American Herbal Pharmacopoeia: Scotts Valley, CA, USA, 2014.
31. Radwan, M.M.; Elsohly, M.A.; El-Alfy, A.T.; Ahmed, S.A.; Slade, D.; Husni, A.S.; Manly, S.P.; Wilson, L.; Seale, S.; Cutler, S.J.; et al. Isolation and pharmacological evaluation of minor cannabinoids from high-potency *Cannabis sativa*. *J. Nat. Prod.* **2015**, *78*, 1271–1276. [[CrossRef](#)] [[PubMed](#)]
32. Guo, T.; Liu, Q.; Hou, P.; Li, F.; Guo, S.; Song, W.; Zhang, H.; Liu, X.; Zhang, S.; Zhang, J.; et al. Stilbenoids and cannabinoids from the leaves of *Cannabis sativa* f. *sativa* with potential reverse cholesterol transport activity. *Food Funct.* **2018**, *9*, 6608–6617. [[CrossRef](#)]
33. Guo, T.T.; Zhang, J.C.; Zhang, H.; Liu, Q.C.; Zhao, Y.; Hou, Y.F.; Bai, L.; Zhang, L.; Liu, X.Q.; Liu, X.Y.; et al. Bioactive spirans and other constituents from the leaves of *Cannabis sativa* f. *sativa*. *J. Asian Nat. Prod. Res.* **2017**, *19*, 793–802. [[CrossRef](#)] [[PubMed](#)]
34. Yan, X.; Tang, J.; dos Santos Passos, C.; Nurisso, A.; Simoes-Pires, C.A.; Ji, M.; Lou, H.; Fan, P. Characterization of lignanamides from hemp (*Cannabis sativa* L.) seed and their antioxidant and acetylcholinesterase inhibitory activities. *J. Agric. Food Chem.* **2015**, *63*, 10611–10619. [[CrossRef](#)]
35. Ingallina, C.; Sobolev, A.P.; Circi, S.; Spano, M.; Frascchetti, C.; Filippi, A.; di Sotto, A.; di Giacomo, S.; Mazzocanti, G.; Gasparrini, F.; et al. *Cannabis sativa* L. inflorescences from monoecious cultivars grown in central Italy: An untargeted chemical characterization from early flowering to ripening. *Molecules* **2020**, *25*, 1908. [[CrossRef](#)] [[PubMed](#)]
36. Menghini, L.; Ferrante, C.; Carradori, S.; D’antonio, M.; Orlando, G.; Cairone, F.; Cesa, S.; Filippi, A.; Frascchetti, C.; Zengin, G.; et al. Chemical and bioinformatics analyses of the anti-leishmanial and anti-oxidant activities of hemp essential oil. *Biomolecules* **2021**, *11*, 272. [[CrossRef](#)] [[PubMed](#)]
37. Di Giacomo, V.; Recinella, L.; Chiavaroli, A.; Orlando, G.; Cataldi, A.; Rapino, M.; di Valerio, V.; Politi, M.; Antolini, M.D.; Acquaviva, A.; et al. Metabolomic profile and antioxidant/anti-inflammatory effects of industrial hemp water extract in fibroblasts, keratinocytes and isolated mouse skin specimens. *Antioxidants* **2021**, *10*, 44. [[CrossRef](#)] [[PubMed](#)]
38. Weston-Green, K. The united chemicals of Cannabis: Beneficial effects of cannabis phytochemicals on the brain and cognition. In *Recent Advances in Cannabinoid Research*; IntechOpen: London, UK, 2018.
39. Smeriglio, A.; Galati, E.M.; Monforte, M.T.; Lanuzza, F.; D’angelo, V.; Circosta, C. Polyphenolic Compounds and antioxidant activity of cold-pressed seed oil from finola cultivar of *Cannabis sativa* L. *Phytother. Res.* **2016**, *30*, 1298–1307. [[CrossRef](#)]
40. Ryz, N.R.; Remillard, D.J.; Russo, E.B. Cannabis roots: A traditional therapy with future potential for treating inflammation and pain. *Cannabis Cannabinoid Res.* **2017**, *2*, 210–216. [[CrossRef](#)]
41. Ramirez, C.L.; Fanovich, M.A.; Churio, M.S. Cannabinoids: Extraction methods, analysis, and physicochemical characterization. *Stud. Nat. Prod. Chem.* **2019**, *66*, 143–173.
42. Plotka-Wasyłka, J.; Rutkowska, M.; Owczarek, K.; Tobiszewski, M.; Namieśnik, J. Extraction with environmentally friendly solvents. *TrAC Trends Anal. Chem.* **2017**, *91*, 12–25. [[CrossRef](#)]
43. International Conference on Harmonisation (ICH). International Council for Harmonisation of Technical Requirements for Pharmaceuticals for Human Use. ICH Harmonised Guideline. Impurities: Guideline for Residual solvents q3c(R6). 2016. Available online: [https://database.ich.org/sites/default/files/Q3C-R6\\_Guideline\\_ErrorCorrection\\_2019\\_0410\\_0.pdf](https://database.ich.org/sites/default/files/Q3C-R6_Guideline_ErrorCorrection_2019_0410_0.pdf) (accessed on 20 January 2022).
44. Brighenti, V.; Pellati, F.; Steinbach, M.; Maran, D.; Benvenuti, S. Development of a new extraction technique and hplc method for the analysis of non-psychoactive cannabinoids in fibre-type *Cannabis sativa* L. (hemp). *J. Pharma. Biomed. Anal.* **2017**, *143*, 228–236. [[CrossRef](#)] [[PubMed](#)]
45. Recommended Methods for the Identification and Analysis of Cannabis and Cannabis Products. 2009. Available online: <http://www.unodc.org/documents/scientific/ST-NAR-40-Ebook.pdf> (accessed on 1 November 2021).
46. Allwood, J.W.; Ellis, D.I.; Goodacre, R. Metabolomic technologies and their application to the study of plants and plant-host interactions. *Physiol. Plant.* **2008**, *132*, 117–135. [[CrossRef](#)] [[PubMed](#)]
47. Cardenia, V.; Toschi, T.G.; Scappini, S.; Rubino, R.C.; Rodriguez-Estrada, M.T. Development and validation of a fast gas chromatography/mass spectrometry method for the determination of cannabinoids in *Cannabis sativa* L. *J. Food Drug Anal.* **2018**, *26*, 1283–1292. [[CrossRef](#)] [[PubMed](#)]
48. Rochfort, S.; Isbel, A.; Ezernieks, V.; Elkins, A.; Vincent, D.; Deseo, M.A.; Spangenberg, G.C. Utilisation of design of experiments approach to optimise supercritical fluid extraction of medicinal Cannabis. *Sci. Rep.* **2020**, *10*, 1–7. [[CrossRef](#)] [[PubMed](#)]
49. Patel, B.; Wene, D.; Fan, Z.T. Qualitative and quantitative measurement of cannabinoids in Cannabis using modified hplc/dad method. *J. Pharma Biomed. Anal.* **2017**, *146*, 15–23. [[CrossRef](#)] [[PubMed](#)]



50. Bercht, C.; Lousberg, R.; Küppers, F.; Salemink, C.; Vree, T.; van Rossum, J. Cannabis: VII. Identification of cannabiniol methyl ether from hashish. *J. Chromatogr. Anal.* **1973**, *81*, 163–166.
51. Elsohly, M.; El-Ferally, F.; Turner, C. Isolation and characterization of (+) cannabitrinol and (–) 10 ethoxy 9 hydroxy delta 6a tetrahydrocannabinol: Two new cannabinoids from *Cannabis sativa* L. extract. *Lloydia* **1977**, *40*, 275–280. [[PubMed](#)]
52. Shoyama, Y.; Kuboe, K.; Nishioka, I.; Yamauchi, T. Cannabidiol monomethyl ether. A new neutral cannabinoid. *Chem. Pharm. Bull.* **1972**, *20*, 2072. [[CrossRef](#)]
53. Ahmed, S.A.; Ross, S.A.; Slade, D.; Radwan, M.M.; Khan, I.A.; Elsohly, M.A. Minor oxygenated cannabinoids from high potency *Cannabis sativa* L. *Phytochemistry* **2015**, *117*, 194–199. [[CrossRef](#)] [[PubMed](#)]
54. Ahmed, S.A.; Ross, S.A.; Slade, D.; Radwan, M.M.; Zulfiqar, F.; Elsohly, M.A. Cannabinoid ester constituents from high-potency *Cannabis sativa*. *J. Nat. Prod.* **2008**, *71*, 536–542. [[CrossRef](#)] [[PubMed](#)]
55. Radwan, M.M.; Elsohly, M.A.; Slade, D.; Ahmed, S.A.; Wilson, L.; El-Alfy, A.T.; Khan, I.A.; Ross, S.A. Non-cannabinoid constituents from a high potency *Cannabis sativa* variety. *Phytochemistry* **2008**, *69*, 2627–2633. [[CrossRef](#)] [[PubMed](#)]
56. Chianese, G.; Lopatriello, A.; Schiano-Moriello, A.; Caprioglio, D.; Mattoteia, D.; Benetti, E.; Ciceri, D.; Arnoldi, L.; de Combarieu, E.; Vitale, R.M.; et al. Cannabitrinol, a dimeric phytocannabinoid from hemp, *Cannabis sativa* L.; is a selective thermo-TRP modulator. *J. Nat. Prod.* **2020**, *83*, 2727–2736. [[CrossRef](#)] [[PubMed](#)]
57. Citti, C.; Linciano, P.; Russo, F.; Luongo, L.; Iannotta, M.; Maione, S.; Laganà, A.; Capriotti, A.L.; Forni, F.; Vandelli, M.A.; et al. A novel phytocannabinoid isolated from *Cannabis sativa* L. with an in vivo cannabimimetic activity higher than  $\Delta^9$ - $\Delta^9$ -tetrahydrocannabiphorol. *Sci. Rep.* **2019**, *9*, 20335. [[CrossRef](#)] [[PubMed](#)]
58. Elsohly, M.A.; Ross, S.A. Method of Preparing Delta-9-Tetrahydrocannabinol. U.S. Patent US6365416B1, 4 March 2002.
59. Linciano, P.; Citti, C.; Russo, F.; Tolomeo, F.; Laganà, A.; Capriotti, A.L.; Luongo, L.; Iannotta, M.; Belardo, C.; Maione, S.; et al. Identification of a new cannabidiol n-hexyl homolog in a medicinal cannabis variety with an antinociceptive activity in mice: Cannabidihexol. *Sci. Rep.* **2020**, *10*, 22019. [[CrossRef](#)] [[PubMed](#)]
60. Zulfiqar, F.; Ross, S.A.; Slade, D.; Ahmed, S.A.; Radwan, M.M.; Ali, Z.; Khan, I.A.; Elsohly, M.A. Cannabisol, a novel  $\Delta^9$ -THC dimer possessing a unique methylene bridge, isolated from *Cannabis sativa*. *Tetrahedron Lett.* **2012**, *53*, 3560–3562. [[CrossRef](#)] [[PubMed](#)]
61. Harvey, D. Characterization of the butyl homologues of D-1-tetrahydrocannabinol, cannabiniol and cannabidiol in samples of cannabis by combined gas chromatography and mass spectrometry. *J. Pharm. Pharmacol.* **1976**, *28*, 280–285. [[CrossRef](#)] [[PubMed](#)]
62. Archer, R.A.; Boyd, D.B.; Demarco, P.V.; Tyminski, I.J.; Allinger, N. Structural studies of cannabinoids. Theoretical and proton magnetic resonance analysis. *J. Am. Chem. Soc.* **1970**, *92*, 5200–5206. [[CrossRef](#)]
63. Elsohly, M.A.; Slade, D. Chemical constituents of marijuana: The complex mixture of natural cannabinoids. *Life Sci.* **2005**, *78*, 539–548. [[CrossRef](#)] [[PubMed](#)]
64. Gill, E.W. Propyl homologue of tetrahydrocannabinol: Its isolation from Cannabis, properties, and synthesis. *J. Chem. Soc. C* **1971**, *3*, 579–582. [[CrossRef](#)]
65. Krejčí, Z.; Šantavý, F. Isolation of two new cannabinoid acids from *Cannabis sativa* L. of Czechoslovak origin. *Acta Univ. Olomuc. Fac. Med.* **1975**, *74*, 161–166.
66. Shani, A.; Mechoulam, R. Cannabielsoic acids: Isolation and synthesis by a novel oxidative cyclization. *Tetrahedron* **1974**, *30*, 2437–2446. [[CrossRef](#)]
67. Vree, T.; Breimer, D.; van Ginneken, C.A.M.; van Rossum, J.M. Identification in hashish of tetrahydrocannabinol, cannabidiol and cannabinol analogues with a methyl side-chain. *J. Pharm. Pharmacol.* **1972**, *24*, 7–12. [[CrossRef](#)] [[PubMed](#)]
68. Shoyama, Y.; Hirano, H.; Makino, H.; Umekita, N.; Nishioka, I. Cannabis. X. The isolation and structures of four new propyl cannabinoid acids, tetrahydrocannabivarinic acid, cannabidivarinic acid, cannabichromevarinic acid and cannabigerovarinic acid, from Thai Cannabis, 'meao variant'. *Chem. Pharm. Bull.* **1977**, *25*, 2306–2311. [[CrossRef](#)]
69. Shoyama, Y.; Hirano, H.; Oda, M.; Somehara, T.; Nishioka, I. Cannabichromevarin and cannabigerovarin, two new propyl homologues of cannabichromene and cannabigerol. *Chem. Pharm. Bull.* **1975**, *23*, 1894–1895. [[CrossRef](#)]
70. Appendino, G.; Giana, A.; Gibbons, S.; Maffei, M.; Gnani, G.; Grassi, G.; Sterner, O. A polar cannabinoid from *Cannabis sativa* Var. Carma. *Nat. Prod. Commun.* **2008**, *3*, 1934578X0800301207. [[CrossRef](#)]
71. Pagani, A.; Scala, F.; Chianese, G.; Grassi, G.; Appendino, G.; Tagliatalata-Scafati, O. Cannabioxepane, a novel tetracyclic cannabinoid from hemp, *Cannabis sativa* L. *Tetrahedron* **2011**, *67*, 3369–3373. [[CrossRef](#)]
72. Tagliatalata-Scafati, O.; Pagani, A.; Scala, F.; de Petrocellis, L.; di Marzo, V.; Grassi, G.; Appendino, G. Cannabimovone, a cannabinoid with a rearranged terpenoid skeleton from hemp. *Eur. J. Org. Chem.* **2010**, *2010*, 2023. [[CrossRef](#)]
73. Taura, F.; Morimoto, S.; Shoyama, Y. Cannabinerolic acid, a cannabinoid from *Cannabis sativa*. *Phytochemistry* **1995**, *39*, 457–458. [[CrossRef](#)]
74. Borges, G.R.; Birk, L.; Scheid, C.; Morés, L.; Carasek, E.; Kitamura, R.O.S.; Roveri, F.L.; Eller, S.; de Oliveira Merib, J.; de Oliveira, T.F. Simple and straightforward analysis of cannabinoids in medicinal products by fast-GC-FID. *Forensic Toxicol.* **2020**, *38*, 531–535. [[CrossRef](#)]
75. Naz, S.; Hanif, M.A.; Bhatti, H.N.; Ansari, T.M. Impact of supercritical fluid extraction and traditional distillation on the isolation of aromatic compounds from *Cannabis indica* and *Cannabis sativa*. *J. Essent. Oil Bear. Plants* **2017**, *20*, 175–184. [[CrossRef](#)]
76. Ross, S.A.; Elsohly, M.A. The volatile oil composition of fresh and air-dried buds of *Cannabis sativa*. *J. Nat. Prod.* **1996**, *59*, 49–51. [[CrossRef](#)] [[PubMed](#)]



77. Strömberg, L. Minor Components of Cannabis Resin: IV. Mass spectrometric data and gas chromatographic retention times of terpenic components with retention times shorter than that of cannabidiol. *J. Chromatogr. A* **1974**, *96*, 99–114. [[CrossRef](#)]
78. Turner, C.E.; Elsohly, M.A.; Boeren, E.G. Constituents of *Cannabis sativa* L. XVII. A review of the natural constituents. *J. Nat. Prod.* **1980**, *43*, 169–234. [[CrossRef](#)]
79. Hendriks, H.; Malingré, T.M.; Batterman, S.; Bos, R. Alkanes of the essential oil of *Cannabis sativa*. *Phytochemistry* **1977**, *16*, 719–721. [[CrossRef](#)]
80. El-Ferally, F.S.; El-Sherei, M.M.; Al-Muhtadi, F.J. Spiro-indans from *Cannabis sativa*. *Phytochemistry* **1986**, *25*, 1992–1994. [[CrossRef](#)]
81. Chen, B.; Cai, G.; Yuan, Y.; Li, T.; He, Q.; He, J.F. Chemical constituents in hemp pectin I. *Chin. J. Exp. Tradit. Med. Form.* **2012**, *18*, 98–100.
82. Boeren, E.; Elsohly, M.; Turner, C.; Saleminck, C.  $\beta$ -Cannabispiranol: A new non-cannabinoid phenol from *Cannabis sativa* L. *Experientia* **1977**, *33*, 848. [[CrossRef](#)] [[PubMed](#)]
83. Slatkin, D.J.; Doorenbos, N.J.; Harris, L.S.; Masoud, A.N.; Quimby, M.W.; Schiff, P.L. Chemical constituents of *Cannabis sativa* L. root. *J. Pharm. Sci.* **1971**, *60*, 1891–1892. [[CrossRef](#)]
84. Latter, H.L.; Abraham, D.J.; Turner, C.E.; Knapp, J.E.; Schiff, P.L., Jr.; Slatkin, D.J. Cannabisativine, a new alkaloid from *Cannabis sativa* L. root. *Tetrahedron Lett.* **1975**, *16*, 2815–2818. [[CrossRef](#)]
85. Shoyama, Y.; Nishioka, I. Cannabis. XIII. Two new spiro-compounds, cannabispireol and acetyl cannabispireol. *Chem. Pharm. Bull.* **1978**, *26*, 3641–3646. [[CrossRef](#)]
86. Sánchez-Duffhues, G.; Calzado, M.A.; de Vinuesa, A.G.; Caballero, F.J.; Ech-Chahad, A.; Appendino, G.; Krohn, K.; Fiebich, B.L.; Muñoz, E. Denbinobin, a naturally occurring 1, 4-phenanthrenequinone, inhibits HIV-1 replication through an NF- $\kappa$ B-dependent pathway. *Biochem. Pharmacol.* **2008**, *76*, 1240–1250. [[CrossRef](#)] [[PubMed](#)]
87. Nalli, Y.; Arora, P.; Riyaz-UI-Hassan, S.; Ali, A. Chemical investigation of *Cannabis sativa* leading to the discovery of a prenyl-spirodinone with anti-microbial potential. *Tetrahedron Lett.* **2018**, *59*, 2470–2472. [[CrossRef](#)]
88. Crombie, L.; Crombie, W.M.L. Natural products of Thailand high  $\Delta$  1-THC-strain Cannabis. the bibenzyl-spiran-dihydrophenanthrene group: Relations with cannabinoids and canniflavones. *J. Chem. Soc. Perkin Trans.* **1982**, *1*, 1455–1466. [[CrossRef](#)]
89. Ross, S.; Elsohly, M.A. Constituents of *Cannabis sativa* L. XXVIII. A review of the natural constituents. *Zagazig J. Pharm. Sci.* **1995**, *4*, 1–10. [[CrossRef](#)]
90. Elsohly, H.N.; Ma, G.E.; Turner, C.E.; Elsohly, M.A. Constituents of *Cannabis sativa*, XXV. Isolation of two new dihydrostilbenes from a panamanian variant. *J. Nat. Prod.* **1984**, *47*, 445–452. [[CrossRef](#)] [[PubMed](#)]
91. Ottersen, T.; Aasen, A.; El-Ferally, F.S.; Turner, C.E. X-ray structure of cannabispiran: A novel Cannabis constituent. *Chem. Commun.* **1976**, *15*, 580–581. [[CrossRef](#)]
92. Ross, S.A.; Elsohly, M.A.; Sultana, G.N.; Mehmedic, Z.; Hossain, C.F.; Chandra, S. Flavonoid glycosides and cannabinoids from the pollen of *Cannabis sativa* L. *Phytochem. Anal. Int. J. Plant Chem. Biochem. Tech.* **2005**, *16*, 45–48. [[CrossRef](#)] [[PubMed](#)]
93. Cheng, L.; Kong, D.; Hu, G.; Li, H. A new 9, 10-dihydrophenanthrenedione from *Cannabis sativa*. *Chem. Nat. Compd.* **2010**, *46*, 710–712. [[CrossRef](#)]
94. Bercht, C.; van Dongen, J.; Heerma, W.; Lousberg, R.C.; Küppers, F. Cannabispirone and cannabispirenone, two naturally occurring spiro-compounds. *Tetrahedron* **1976**, *32*, 2939–2943. [[CrossRef](#)]
95. Hammond, C.T.; Mahlberg, P.G. Phloroglucinol glucoside as a natural constituent of *Cannabis sativa*. *Phytochemistry* **1994**, *37*, 755–756. [[CrossRef](#)]
96. Namdar, D.; Voet, H.; Ajampura, V.; Nadarajan, S.; Mayzlish-Gati, E.; Mazuz, M.; Shalev, N.; Koltai, H. Terpenoids and phytocannabinoids co-produced in *Cannabis sativa* strains show specific interaction for ellcytotoxic activity. *Molecules* **2019**, *24*, 3031. [[CrossRef](#)]
97. Whalley, B.; Stephens, G.; Williams, C.; Guy, G.; Wright, S.; Kikuchi, T.; GW Pharma Ltd.; Otsuka Pharmaceutical Co Ltd. Use of One or a Combination of Phyto-Cannabinoids in the Treatment of Epilepsy. U.S Patent 9,066,920, 30 June 2015.
98. Parker, L.; Rock, E.; Sticht, M.; Wills, K.; Limebeer, C.L. Cannabinoids suppress acute and anticipatory nausea in preclinical rat models of conditioned gaping. *Pharm. Ther.* **2015**, *97*, 559–561. [[CrossRef](#)] [[PubMed](#)]
99. Erridge, S.; Mangal, N.; Salazar, O.; Pacchetti, B.; Sodergren, M.H. Canniflavins—From plant to patient: A scoping review. *Fitoterapia* **2020**, *146*, 104712. [[CrossRef](#)] [[PubMed](#)]
100. Pacher, P.; Mechoulam, R. Is lipid signaling through cannabinoid 2 receptors part of a protective system? *Prog. Lipid Res.* **2011**, *50*, 193–211. [[CrossRef](#)] [[PubMed](#)]
101. Mcguire, P.; Robson, P.; Cubala, W.J.; Vasile, D.; Morrison, P.D.; Barron, R.; Taylor, A.; Wright, S.J. Cannabidiol (CBD) as an adjunctive therapy in schizophrenia: A multicenter randomized controlled trial. *Am. J. Psychiatry* **2018**, *175*, 225–231. [[CrossRef](#)] [[PubMed](#)]
102. Parker, L.A.; Rock, E.M.; Limebeer, C.L. Regulation of nausea and vomiting by cannabinoids. *Br. J. Pharmacol.* **2011**, *163*, 1411–1422. [[CrossRef](#)] [[PubMed](#)]
103. Yeshurun, M.; Shpilberg, O.; Herscovici, C.; Shargian, L.; Dreyer, J.; Peck, A.; Israeli, M.; Levy-Assaraf, M.; Gruenewald, T.; Mechoulam, R.; et al. Cannabidiol for the prevention of graft-versus-host-disease after allogeneic hematopoietic cell transplantation: Results of a phase II study. *Biol. Blood Marrow Transpl.* **2015**, *21*, 1770–1775. [[CrossRef](#)] [[PubMed](#)]

104. Brierley, D.I.; Samuels, J.; Duncan, M.; Whalley, B.J.; Williams, C.M. Cannabigerol is a novel, well-tolerated appetite stimulant in pre-satiated rats. *Psychopharmacology* **2016**, *233*, 3603–3613. [[CrossRef](#)] [[PubMed](#)]
105. Rock, E.; Kopstick, R.L.; Limebeer, C.L.; Parker, L.A. Tetrahydrocannabinolic acid reduces nausea-induced conditioned gaping in rats and vomiting in *Suncus murinus*. *Br. J. Pharmacol.* **2013**, *170*, 641–648. [[CrossRef](#)]
106. Rock, E.M.; Sticht, M.A.; Parker, L.A. *Effect of Phytocannabinoids on Nausea and Vomiting*; Oxford University Press: Oxford, UK, 2014.
107. Tsien, R.; Whalley, B.J.; Devinsky, O. Cannabinoids and Epilepsy. *Neurotherapeutics* **2015**, *12*, 747–768.
108. Moreno-Sanz, G. Can you pass the acid test? critical review and novel therapeutic perspectives of  $\Delta^9$ -tetrahydrocannabinolic acid A. *Cannabis Cannabinoid Res.* **2016**, *1*, 124–130. [[CrossRef](#)] [[PubMed](#)]
109. Rock, E.; Parker, L.A. Effect of low doses of cannabidiolic acid and ondansetron on licl-induced conditioned gaping (a model of nausea-induced behaviour) in rats. *Br. J. Pharmacol.* **2013**, *169*, 685–692. [[CrossRef](#)] [[PubMed](#)]
110. Rock, E.M.; Connolly, C.; Limebeer, C.L.; Parker, L.A. Effect of combined oral doses of  $\Delta^9$ -tetrahydrocannabinol (THC) and cannabidiolic acid (CBDA) on acute and anticipatory nausea in rat models. *Psychopharmacology* **2016**, *233*, 3353–3360. [[CrossRef](#)] [[PubMed](#)]
111. Russo, E.B. Taming THC: Potential cannabis synergy and phytocannabinoid-terpenoid entourage effects. *Br. J. Pharmacol.* **2011**, *163*, 1344–1364. [[CrossRef](#)] [[PubMed](#)]
112. Cascone, P.; Iodice, L.; Maffei, M.E.; Bossi, S.; Arimura, G.I.; Guerrieri, E. Tobacco overexpressing  $\beta$ -ocimene induces direct and indirect responses against aphids in receiver tomato plants. *J. Plant Physiol.* **2015**, *173*, 28–32. [[CrossRef](#)] [[PubMed](#)]
113. Bomfim, L.M.; Menezes, L.R.; Rodrigues, A.C.; Dias, R.B.; Gurgel Rocha, C.A.; Soares, M.B.; Neto, A.F.; Nascimento, M.P.; Campos, A.F.; Silva, L.C.; et al. Antitumour activity of the microencapsulation of *Annona vepretorum* essential oil. *Basic Clin. Pharmacol.* **2016**, *118*, 208–213. [[CrossRef](#)] [[PubMed](#)]
114. De Oliveira Ramalho, T.R.; de Oliveira, M.T.; de Araujo Lima, A.L.; Bezerra-Santos, C.R.; Piuvezam, M.R. Gamma-terpinene modulates acute inflammatory response in mice. *Planta Med.* **2015**, *81*, 1248–1254.
115. Fitsiou, E.; Anestopoulos, I.; Chlichlia, K.; Galanis, A.; Kourkoutas, I.; Panayiotidis, M.I.; Pappa, A. Antioxidant and antiproliferative properties of the essential oils of *Satureja thymbra* and *Satureja parnassica* and their major constituents. *Anticancer Res.* **2016**, *36*, 5757–5763. [[CrossRef](#)] [[PubMed](#)]
116. Kasuya, H.; Okada, N.; Kubohara, M.; Satou, T.; Masuo, Y.; Koike, K. Expression of BDNF and TH mRNA in the Brain Following Inhaled Administration of A-Pinene. *Phytother. Res.* **2015**, *29*, 43–47. [[CrossRef](#)] [[PubMed](#)]
117. Han, H.D.; Cho, Y.J.; Cho, S.K.; Byeon, Y.; Jeon, H.N.; Kim, H.S.; Kim, B.G.; Bae, D.S.; Lopez-Berestein, G.; Sood, A.K.; et al. Linalool-incorporated nanoparticles as a novel anticancer agent for epithelial ovarian carcinoma. *Mol. Cancer Ther.* **2016**, *15*, 618–627. [[CrossRef](#)]
118. Russo, E.B. Cannabis and epilepsy: An ancient treatment returns to the fore. *Epilepsy Behav.* **2017**, *70*, 292–297. [[CrossRef](#)] [[PubMed](#)]
119. Sulak, D.; Saneto, R.; Goldstein, B. The current status of artisanal Cannabis for the treatment of epilepsy in the United States. *Epilepsy Behav.* **2017**, *70*, 328–333. [[CrossRef](#)]
120. Piccinelli, A.C.; Santos, J.A.; Konkiewitz, E.C.; Oesterreich, S.A.; Formagio, A.S.; Croda, J.; Ziff, E.B.; Kassuya, C. Antihyperalgesic and antidepressive actions of (R)-(+)-Limonene, A-phellandrene, and essential oil from schinus terebinthifolius fruits in a neuropathic pain model. *Nutr. Neurosci.* **2015**, *18*, 24. [[CrossRef](#)]
121. Siqueira, H.D.; Neto, B.S.; Sousa, D.P.; Gomes, B.S.; da Silva, F.V.; Cunha, F.V.; Wanderley, C.W.; Pinheiro, G.; Cândido, A.G.; Wong, D.V.; et al. A-Phellandrene, a cyclic monoterpene, attenuates inflammatory response through neutrophil migration inhibition and mast cell degranulation. *Life Sci.* **2016**, *160*, 27–33. [[CrossRef](#)]
122. Lima, D.F.; Brandão, M.S.; Moura, J.B.; Leitão, J.M.; Carvalho, F.A.; Miúra, L.M.; Leite, J.R.; Sousa, D.P.; Almeida, F.R. Antinociceptive activity of the monoterpene  $\alpha$ -phellandrene in rodents: Possible mechanisms of action. *J. Pharm. Pharmacol.* **2012**, *64*, 283–292. [[CrossRef](#)] [[PubMed](#)]
123. Aydin, E.; Türkez, H.; Taşdemir, Ş. Anticancer and antioxidant properties of terpinolene in rat brain cells. *Arch. Ind. Hyg. Toxicol.* **2013**, *64*, 415–424. [[CrossRef](#)] [[PubMed](#)]
124. Turkez, H.; Aydın, E.; Geyikoglu, F.; Cetin, D. Genotoxic and oxidative damage potentials in human lymphocytes after exposure to terpinolene in vitro. *Cytotechnology* **2015**, *67*, 409–418. [[CrossRef](#)] [[PubMed](#)]
125. Paula-Freire, L.I.; Andersen, M.; Gama, V.; Molska, G.; Carlini, E.L. The oral administration of trans-caryophyllene attenuates acute and chronic pain in mice. *Phytomedicine* **2014**, *21*, 356–362. [[CrossRef](#)] [[PubMed](#)]
126. Varga, Z.V.; Matyas, C.; Erdelyi, K.; Cinar, R.; Nieri, D.; Chicca, A.; Nemeth, B.T.; Paloczi, J.; Lajtos, T.; Corey, L.; et al. Research Paper Themed Issue B-Caryophyllene protects against alcoholic steatohepatitis by attenuating inflammation and metabolic dysregulation in mice. *Br. J. Pharmacol.* **2017**, *175*, 320–334. [[CrossRef](#)] [[PubMed](#)]
127. Katsuyama, S.; Mizoguchi, H.; Kuwahata, H.; Komatsu, T.; Nagaoka, K.; Nakamura, H.; Bagetta, G.; Sakurada, T.; Sakurada, S. Involvement of peripheral cannabinoid and opioid receptors in  $\beta$ -caryophyllene-induced antinociception. *Eur. J. Pain* **2013**, *17*, 664–675. [[CrossRef](#)] [[PubMed](#)]
128. Xu, H.B.; Zheng, L.P.; Li, L.; Xu, L.Z.; Fu, J. Elemene, one ingredient of a chinese herb, against malignant tumors: A literature-based meta-analysis. *Cancer Invest.* **2013**, *31*, 156–166. [[CrossRef](#)] [[PubMed](#)]

129. Yang, Q.; Wu, J.; Luo, Y.; Huang, N.; Zhen, N.; Zhou, Y.; Sun, F.; Li, Z.; Pan, Q.; Li, Y. (–)-Guaiol Regulates RAD51 stability via autophagy to induce cell apoptosis in non-small cell lung cancer. *Oncotarget* **2016**, *7*, 62585. [CrossRef] [PubMed]
130. Chinsembu, K.C. Tuberculosis and nature's pharmacy of putative anti-tuberculosis agents. *Acta Tropica* **2016**, *153*, 46–56. [CrossRef] [PubMed]
131. Semanya, S.; Potgieter, M.; Tshisikhawe, M.; Shava, S.; Maroyi, A. Medicinal utilization of exotic plants by bapedi traditional healers to treat human ailments in Limpopo province, South Africa. *J. Ethnopharmacol.* **2012**, *144*, 646–655. [CrossRef] [PubMed]
132. Yang, H.H.; Son, J.K.; Jung, B.; Zheng, M.; Kim, J.R. Epifriedelanol from the root bark of *Ulmus davidiana* inhibits cellular senescence in human primary cells. *Planta Medica* **2011**, *77*, 441–449. [CrossRef]
133. Zhou, X.; Wang, F.; Zhou, R.; Song, X.; Xie, M. Apigenin: A current review on its beneficial biological activities. *J. Food Biochem.* **2017**, *41*, e12376. [CrossRef]
134. He, M.; Min, J.W.; Kong, W.L.; He, X.H.; Li, J.X.; Peng, B.W. A review on the pharmacological effects of vitexin and isovitexin. *Fitoterapia* **2016**, *115*, 74–85. [CrossRef] [PubMed]
135. Sharma, A.; Kashyap, D.; Sak, K.; Tuli, H.S.; Sharma, A.K. Therapeutic charm of quercetin and its derivatives: A review of research and patents. *Pharm. Pat. Anal.* **2018**, *7*, 15–32. [CrossRef] [PubMed]
136. Ashaari, Z.; Hassanzadeh, G.; Alizamir, T.; Yousefi, B.; Keshavarzi, Z.; Mokhtari, T. The flavone luteolin improves central nervous system disorders by different mechanisms: A review. *J. Mol. Neurosci.* **2018**, *65*, 491–506. [CrossRef]
137. Rudroff, T.; Sosnoff, J.J. Cannabidiol to improve mobility in people with multiple sclerosis. *Front. Neurol.* **2018**, *9*, 183. [CrossRef] [PubMed]
138. Wong, K.U.; Baum, C.R. Acute Cannabis Toxicity. *Pediatr. Emerg. Care* **2019**, *35*, 799–806. [CrossRef] [PubMed]
139. International Conference on Harmonisation (ICH). All Guidelines. Available online: <https://www.ich.org/page/ich-guidelines> (accessed on 19 April 2020).
140. Schlag, A.K.; O'sullivan, S.E.; Zafar, R.R.; Nutt, D.J. Current controversies in medical cannabis: Recent developments in human clinical applications and potential therapeutics. *Neuropharmacology* **2021**, *191*, 108586. [CrossRef]
141. Hill, K.P. Cannabinoids and the coronavirus. *Cannabis Cannabinoid Res.* **2020**, *5*, 118–120. [CrossRef]
142. Costiniuk, C.T.; Jenabian, M.A. Acute inflammation and pathogenesis of SARS-CoV-2 infection: Cannabidiol as a potential anti-inflammatory treatment? *Cytokine Growth Factor Rev.* **2020**, *53*, 63. [CrossRef] [PubMed]
143. Byrareddy, S.N.; Mohan, M. SARS-CoV2 induced respiratory distress: Can cannabinoids be added to anti-viral therapies to reduce lung inflammation? *Brain Behav. Immun.* **2020**, *87*, 120. [CrossRef] [PubMed]
144. Esposito, G.; Pesce, M.; Seguella, L.; Sanseverino, W.; Lu, J.; Corpetti, C.; Sarnelli, G. The potential of cannabidiol in the COVID-19 pandemic. *Br. J. Pharmacol.* **2020**, *177*, 4967–4970. [CrossRef] [PubMed]
145. O'sullivan, S.E.; Stevenson, C.W.; Laviolette, S.R. Could cannabidiol be a treatment for coronavirus disease-19-related anxiety disorders? *Cannabis Cannabinoid Res.* **2021**, *6*, 7–18. [CrossRef] [PubMed]