



The Allure of Big Data to Improve Stroke Outcomes: Review of Current Literature

Muideen T. Olaiya¹ · Nita Sodhi-Berry² · Lachlan L. Dalli¹ · Kiran Bam¹ · Amanda G. Thrift¹ · Judith M. Katzenellenbogen^{2,3} · Lee Nedkoff² · Joosup Kim^{1,4} · Monique F. Kilkenny^{1,4}

Accepted: 23 December 2021 / Published online: 11 March 2022
© The Author(s) 2022

Abstract

Purpose of Review To critically appraise literature on recent advances and methods using “big data” to evaluate stroke outcomes and associated factors.

Recent Findings Recent big data studies provided new evidence on the incidence of stroke outcomes, and important emerging predictors of these outcomes. Main highlights included the identification of COVID-19 infection and exposure to a low-dose particulate matter as emerging predictors of mortality post-stroke. Demographic (age, sex) and geographical (rural vs. urban) disparities in outcomes were also identified. There was a surge in methodological (e.g., machine learning and validation) studies aimed at maximizing the efficiency of big data for improving the prediction of stroke outcomes. However, considerable delays remain between data generation and publication.

Summary Big data are driving rapid innovations in research of stroke outcomes, generating novel evidence for bridging practice gaps. Opportunity exists to harness big data to drive real-time improvements in stroke outcomes.

Keywords Big data · Stroke · Outcomes · Mortality · Validation studies · Machine learning

Introduction

Globally, stroke is a major cause of death and disability [1]. Survivors often report poor quality of life and increased levels of disability, and are at an elevated risk of recurrent vascular events [1, 2]. In recent decades, there has been substantial interest in using large, routinely collected data from various sources, often

called “big data,” to generate real-world evidence for understanding and improving outcomes after a stroke or vascular event [3, 4]. Big data-enabled research can be distinguished from other types of research based on the attributes described in the 5Vs framework, including: *volume* (the size or number of records), *variety* (heterogeneity or diversity of type, structure and setting of data), *velocity* (rapid generation and reporting of data), *veracity* (data quality and reliability), and *variability* (variations between different data sources and datasets) [4, 5]. In stroke research, big data are valuable, low-cost resources for making evidence-based decisions to guide practice and policy on the prevention of adverse outcomes following stroke [4].

Given the rapidly expanding use of big data to explore outcomes following stroke, an updated review of the methods and major findings from these studies is needed to help guide the future directions for big data-enabled research. In this narrative review, we critically appraised literature on recent advances and methods using big data to evaluate health and economic outcomes after stroke and determinants of these outcomes.

This article is part of the Topical Collection on *Stroke*

✉ Monique F. Kilkenny
monique.kilkenny@monash.edu

- ¹ Stroke and Ageing Research, Department of Medicine, School of Clinical Sciences at Monash Health, Monash University, Clayton, VIC, Australia
- ² Cardiovascular Research Group, School of Population and Global Health, The University of Western Australia, Perth, WA, Australia
- ³ Telethon Kids Institute, The University of Western Australia, Perth, WA, Australia
- ⁴ The Florey Institute of Neuroscience and Mental Health, The University of Melbourne, Heidelberg, VIC, Australia

Search Strategy

This was a narrative review of cohort studies on outcomes following discharge for a stroke or transient ischemic attack (TIA). Given the ongoing pandemic, we also reviewed studies of inpatient outcomes in those with concurrent COVID-19 infection. Owing to the breadth of possible outcomes to explore, we focused only on major stroke outcomes, i.e., mortality, hospital readmissions, medication use/adherence, functional measures, quality of life, and healthcare costs. We searched Ovid MEDLINE, Ovid Embase, and CINAHL Plus databases for studies published between January 2019 and August 2021, with outcome data on at least 1,000 people with stroke/TIA, aged ≥ 18 years. Grey literature, government documents, conference abstracts, and articles published in languages other than English were excluded. We further excluded articles which did not meet the attributes of big data research described in the 5Vs framework [5], or articles considered to be of low quality (score < 6) based on the Newcastle–Ottawa quality assessment scale [6, 7].

Characterization of Studies on Stroke Outcomes Based on the 5Vs Framework

Overall, 58 studies met the inclusion criteria, including 42 studies (72%) of stroke outcomes (Supplementary Table I). There were an additional 16 studies (28%) focused on analytic methods or validation studies used to maximize the value of big data for improving stroke outcomes. Figure 1 provides an overview of studies on stroke outcome using the 5Vs framework. The *volume*, in terms of the sample analyzed, ranged from 1,073 to 167,640 participants. While a *variety* of stroke types (ischemic, hemorrhagic, undetermined stroke and TIA) and outcomes (multiple outcomes reported in one third of the studies) were explored, all but one of the studies were from high-income countries. The median *velocity* of data generation was 2,726 participants per year, including 9 studies with data on $> 10,000$ participants per year. However, *velocity* of data, in terms of median time between the end of data collection and generation of findings, was 6 years (interquartile range 4–7, maximum 17). *Veracity* of studies was examined, in terms of missing variables and biases, such as selection, misclassification, and recall bias. *Variability* was apparent based on the number of data sources explored (median 3 sources, interquartile range 1–11; Fig. 1).

Outcomes After Stroke

Mortality

Data on mortality after stroke were reported in 28 studies ($n = 1,367$ to 86,189 individuals) from 14 countries

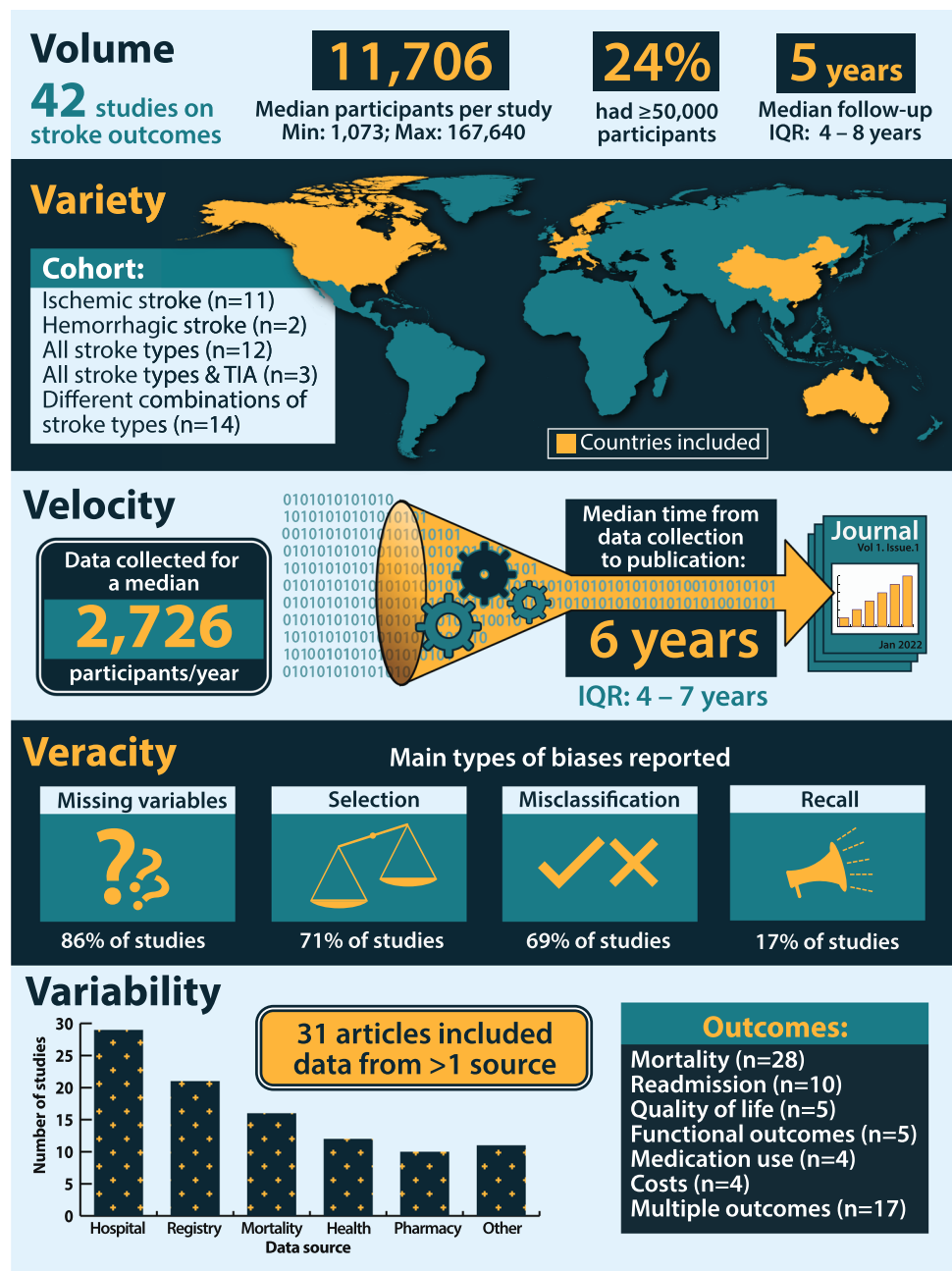
(Australia, Belgium, Canada, Denmark, France, Germany, Hong Kong, Italy, Korea, Netherlands, Norway, Sweden, UK, and USA) [8•, 9, 10, 11••, 12–20, 21•, 22••, 23•, 24••, 25–28, 29••, 30••, 31, 32••]. In these studies, mortality was ascertained using hospital administrative data [26, 27, 30••, 33], death registers [8•, 9, 10, 11••, 13–18, 20, 21•, 22••, 23•, 24••, 25, 28, 29••, 31, 32••, 34••, 35••, 36], or a combination of linkage with death registers and prospective follow-up assessments [12]. Cumulative crude rates of mortality post-stroke/TIA ranged from 7 to 18% within 30 days [9, 11••, 16, 20, 26] and 14 to 28% within 1 year [8••, 10••, 11••, 13, 20, 36]. In studies with longer-term data, 82% of patients with ischemic stroke died within 15 years [17]. Causes of death, mostly categorized as vascular or non-vascular, were reported in eight studies [11••, 17, 24, 25, 27, 31, 32••].

Big data have also been explored to elucidate determinants of mortality, including patient- and system-level or healthcare factors. Patient sociodemographic and clinical factors are important considerations when examining post-stroke mortality. Although evidence on whether mortality rates after stroke/TIA differ by sex is equivocal [15, 36], other sociodemographic factors have been shown to be associated with greater risk of mortality post-stroke. These include low income [16, 26], poor educational attainment [16], and being unmarried and without children [28]. In one study undertaken in the USA, rates of mortality up to 10 years after intracerebral hemorrhage (ICH) were greater for White vs. non-White survivors [27]. Interestingly, in Canada, immigrants aged < 75 years had an 18% reduced risk of mortality over a median 5-year period than long-term residents [17]. However, immigrants from South Asia had increased mortality rates post-stroke than those who immigrated from other regions [17]. No difference was found in age-adjusted mortality rates among people with diabetes at 7, 30, and 365 days following stroke between First Nations and other residents in Canada [31].

The collection of standardized big data across multiple regions and jurisdictions allows investigation of geographical differences in mortality post-stroke. The effect of rurality on mortality was investigated in a Canadian study ($n = 75,823$) in which rural residents had a 7% greater risk of mortality during up to 5-year period of follow-up than their metropolitan counterparts [34••]. By contrast, no such difference was observed in Australia [23•]. In a novel finding, exposure to a low-dose particulate matter ($PM_{2.5} < 12 \mu\text{g}/\text{m}^3$) over one year in the USA increased the risk of cardiovascular mortality by twofold during an average 6-year period after stroke [32••].

Similar to earlier reviews [4], stroke severity was identified as an important clinical predictor of mortality post-stroke [9, 12, 15]. Patients with less severe ICH, i.e., able to walk

Fig. 1 Characterization of studies on stroke outcomes based on the 5Vs framework



independently on admission, had about fourfold reduced risk of 180-day mortality than those with more severe ICH [21•]. Comorbidities associated with a greater risk of mortality post-stroke/TIA included history of atrial fibrillation/flutter [8•, 14, 27], cancer [8•, 21•], chronic kidney disease [14], diabetes [8•], dementia [14], depression [14], heart failure [8•, 14], hypertension [21•], myocardial infarction [8•], respiratory disease [14], or schizophrenia [11••, 20]. Current smoking was also reported to be associated with mortality post-stroke [21•]. Surprisingly, being overweight or obese was associated with a reduced risk of 1-year mortality after stroke [8•], the mechanisms of which remain unclear.

Using big data, authors have also identified COVID-19 infection as an emerging predictor of mortality post-stroke. In a nationwide study of German patients with stroke/TIA admitted across 1,463 hospitals, compared to the pre-pandemic period, inhospital mortality increased by 0.5% for ischemic stroke and by 5% for hemorrhagic stroke during the pandemic [37]. In another German study of 30,864 patients with acute ischemic stroke, rates of inhospital mortality were nearly threefold greater among those with concurrent COVID-19 infection than those without [30••]. Similarly, in a study of 41,588 patients hospitalized with stroke in France, patients with concurrent COVID-19 infection had an 85%

increased rate of 3-month mortality [29••]. This finding was more pronounced in patients with ischemic stroke, with a twofold greater rate of 3-month mortality observed among those with concurrent COVID-19 than those without [29••].

A number of healthcare factors have been associated with improved survival after stroke/TIA. Receiving neuro-intervention following admission for stroke was associated with a 12% reduced risk of 3-month mortality [12], whereas early (vs. delayed) direct enteral feeding tube placement after acute stroke improved 30-day survival [25]. Using data from twelve hospitals in the USA, provision of one to two occupational or physical therapy sessions during admission for acute stroke was associated with a 30% reduced risk of 30-day mortality or readmission [26]. This effect was more pronounced among patients discharged to inpatient rehabilitation [26], a factor that has also been shown to be associated with improved 90-, 180-, and 365-day survival in Australia [13]. In contrast, receiving intravenous thrombolysis was not found to be associated with survival among 8,898 patients with ischemic stroke [18].

Readmissions

Hospital readmission is an important outcome-based indicator of quality of care for conditions, such as stroke [38]. Readmissions were assessed in 10 studies ($n = 1,998$ – $116,073$ individuals) from Australia [13, 33, 39, 40, 41••], the USA [26, 32••, 33, 42, 43], and Europe [14, 33]. Unadjusted cumulative rates of readmission following stroke ranged from 4.5% within 7 days [26], 7–13% (all stroke types) [26, 33, 42] or 16% (ischemic stroke only) [14] within 30 days, 25% within 90 days [40], and 53% within 1 year [13]. One in ten patients experience recurrence of ICH within 5 years of stroke; an estimate that was slightly greater for patients without atrial fibrillation [14]. The most common reasons for readmission include recurrence of cerebrovascular disease, cardiovascular disease, chest pain, abnormal findings, cancer, and gastrointestinal diseases [39, 40, 43]. Interestingly, more than 50% of patients were readmitted for reasons different from the initial hospitalization [33].

A number of patient-level factors were reported to be associated with a greater risk of readmission in the period up to 90 days after discharge for stroke. These included age [14], sex [42], place of residence or living situation [13, 14, 39], type of stroke [42], severity of stroke [14], functional independence or ability [39, 42], and poorer comorbidity profile [42]. Female sex, having a stroke of non-ischemic origin, greater Charlson comorbidity index scores, having an admission within 90 days before stroke, and having a poor functional ability on admission for stroke were associated with a greater risk of readmission [39, 42]. In a study of 9,255 Danish patients with ICH, greater age, not living at

home, and having a more severe hemorrhage were associated with an increased risk of recurrent ICH within 5 years [14]. By contrast, history of diabetes, history of non-traumatic intracranial bleeding, and living alone (vs. cohabitating) were associated with a reduced recurrence of ICH [14].

Discharge destination remains an important factor influencing readmission. Among 8,555 Australian patients with acute stroke, those discharged to inpatient rehabilitation facilities from acute care were less likely to be readmitted within 1 year than patients discharged directly home, but were more likely to be readmitted than patients discharged to residential aged care [13]. By contrast, more frequent visits to a physical or occupational therapist were associated with a reduced risk of readmission or mortality within 30 days of discharge for stroke [26], with these effects being more pronounced in people discharged to post-acute care facility (vs. home) and in those having problems (vs. no problems) with mobility [26].

Medication Use or Adherence

Secondary prevention medications are strongly recommended for survivors of stroke to reduce their risk of subsequent vascular events [44, 45]. Despite these recommendations, disparities in the use of medications were highlighted in several big data studies [46••, 47, 48]. In one such study undertaken among 9,817 Australian patients with first-ever stroke/TIA, about one in five patients never filled a prescription for an antihypertensive, antithrombotic, or lipid-lowering medication within 1 year of hospital discharge [46••]. Of greater concern, up to one-third of patients who initially filled a prescription subsequently discontinued therapy for ≥ 90 days (21% discontinued antihypertensive medications, 34% antithrombotic medications, and 29% lipid-lowering medications) [46••]. Factors associated with continuation of antihypertensive medications included having a prescription at discharge from hospital, having quarterly contact with a primary care physician, and being prescribed medications by a specialist [46••]. In other studies, being female [47] and having greater psychological distress [48] were associated with suboptimal medication adherence after stroke. The importance of medication adherence on survival was highlighted in another study of 8,363 Australian survivors of stroke/TIA [22]. In that study, among those with adherence levels $\geq 60\%$ during the first year after stroke, a 10% increase in medication adherence was associated with a 13–15% linear reduction in mortality during the subsequent 2 years [22••].

Functional Measures

Recovery and return to usual daily activities rely heavily on improvements in functional outcomes after stroke.

Functional outcomes were reported in five studies, with sample sizes ranging from 1,367 to 35,913 adults [10••, 25, 36, 41••, 49]. In these studies, functional outcomes were captured in registry, hospital, or pharmaceutical claims data, using a variety of scales, such as the modified Rankin Scale (mRS) [10••, 25, 41••, 50], the functional independence measure [49], and ability to undertake activities of daily living (i.e., toileting or dressing) [10••, 36]. Among Australian patients admitted to an inpatient rehabilitation facility following acute stroke/TIA, those with greater relative functional gain (defined by a change in functional independence measure) during rehabilitation were ≥ 10 times more likely to be independent (mRS 0–2) at 90–180 days after stroke/TIA [41••]. Similarly, in a Swedish cohort, having ≥ 2 prescriptions (for either anticoagulant, antihypertensive, antidepressant, or diabetes medications) in the year before ischemic stroke was associated with 50–100% greater odds of being independent (estimated mRS 0–2 or ability to toilet or dress) [10••].

Researchers have also explored the potential utility of home-time as a surrogate for functional outcomes [50], as discussed in the section on validation studies below.

Quality of Life

Health-related quality of life (HRQoL) after stroke is an important outcome measure for understanding the health status and any impairments experienced by people living with stroke/TIA in the community. However, the utility of big data to understand HRQoL after a stroke/TIA is yet to be fully explored globally. Reports of big data on HRQoL outcomes post-stroke/TIA came from five studies that were based on data from the Australian Stroke Clinical Registry ($n=4,239$ to 28,115 survivors), collected during follow-up surveys administered between 90 and 180 days after acute stroke/TIA [13, 23•, 39, 41••, 51•]. In these studies, HRQoL was self-reported via the EuroQoL five-dimensional 3-level questionnaire [52]. Among registrants with a first-ever stroke, 60% reported problems with mobility and usual activities, 50% with anxiety/depression and pain, and 30% with self-care [39].

Researchers have also explored whether HRQoL at 90–180 days post-stroke/TIA varied by demographic characteristics [23•, 51•]. No sex difference was observed in the overall HRQoL, assessed using a visual analogue scale ranging from 0 to 100 (worst to best imaginable health) [51•]. However, females were 8% to 16% more likely to report problems related to usual activities, anxiety/depression, or pain/discomfort than males [51]. Compared to patients treated in rural hospitals, those treated in metropolitan hospitals more often reported extreme problems with mobility (7% vs. 5%) and self-care (12% vs 9%) [23•].

Discharge destination and functional gain during rehabilitation care were associated with HRQoL at 90–180 days post-stroke/TIA [13, 41••]. Compared to survivors who were discharged home, the overall HRQoL was worse by 6.5 points for those discharged to rehabilitation [13]. However, survivors discharged to rehabilitation had better overall HRQoL than those discharged to residential aged care (+43.4 points) [13]. In another study, there was a 22-point gain in HRQoL among those with greater relative functional gain (defined by a change in functional independence measure) [41••].

Healthcare Costs

The economic burden of stroke is considerable, with annual direct and indirect costs estimated to exceed €60 billion in Europe [53] and AU\$32 billion in Australia [54]. With limited healthcare resources, large, routinely collected data on the use of healthcare services are instrumental for eliciting potential opportunities for cost containment. Costs after stroke, or associated factors, were reported in four studies conducted in Canada, China, Sweden, and the USA ($n=1,073$ to 29,673) [55–58]. Among patients with stroke and systemic embolism with non-valvular atrial fibrillation taking oral anticoagulants, healthcare costs were greater among those with major bleeding (US\$81,414; mean 343 days after stroke) than those without (US\$32,607; mean 327 days after stroke) [58]. In a cohort of 1,073 Swedish patients with acute ischemic stroke, the cost of inpatient rehabilitation was significantly lower among those with dementia (US\$7,752) than those without dementia (US\$12,239) [57]. Among 3,673 people with stroke in Canada, overall costs of healthcare utilization were driven by the level of comorbidity and not the index stroke event [55]. Costs were largely due to post-acute care services for those with low levels of comorbidity, and acute care services for those with high levels of comorbidity [55].

Big Data Analytics for Stroke Outcomes

Big data are often complex. Therefore, advanced analytical methods, such as machine learning, are increasingly being used to complement standard statistical methods [3], in order to navigate the nuances and complexities of big data. Moreover, big data often lack some clinically important predictors of stroke outcome (e.g., level of frailty, stroke severity) that are difficult, expensive, or not feasible to collect. As a result, sophisticated analytic methods are being used to validate surrogate variables for these measures. In this section, we review advanced analytical methods reported in recent studies of stroke outcomes or their determinants.

Machine Learning

Machine learning methods optimize technological advances in computing power and statistical tools for analyzing big data, and are driving advances in person-centered care [59]. Advanced machine learning algorithms, capable of handling multi-collinearity, non-linearity, and higher order interactions among variables, are being used to identify novel predictors of patient outcomes beyond those identified via conventional regression analyses [60].

Various machine learning algorithms have been developed for predicting mortality and functional outcomes post-stroke, with varying degrees of accuracy [61]. The most popular machine learning methods being used to improve the prediction of stroke outcomes are random forests, support vector machines, decision trees, and deep neural networks [59]. In one study, random forests performed best for identifying predictors of 30-day mortality after stroke [62••]. Models involving natural language processing of unstructured free-text magnetic resonance imaging reports have been successfully used to predict 90-day functional outcomes with great accuracy [63]. Machine learning methods have also been used to predict other stroke outcomes, including 30-day readmissions [60, 64], home-time [50], motor recovery [65], and complications of stroke (e.g., pneumonia [66], and dysphagia [67]) and for developing a proxy measure of stroke severity [68]. Also, machine learning methods have been used to maximize the utility of longitudinal measures collected after acute stroke for improving the prediction of outcomes [65, 66, 68, 69]. These include the use of 30-day mRS scores to predict 90-day mRS scores [68], longitudinal measures of medication use or pathological measures to predict hospital-acquired pneumonia [66], or combining sequential data on upper extremity capacity recovery to predict post-stroke motor recovery [65]. Despite these advances, there remains a need to address issues related to missingness of data, internal validation, reporting of model development, configuration, features, discrimination and calibration, and sample size limitations [59, 61].

Validation of Surrogate Measures Using Big Data

Big data studies often lack information on important clinical or biological measures, such as patient frailty [35••] or stroke severity [19, 70, 71], that are pertinent to the research of stroke outcomes. To overcome this limitation, authors have developed surrogate indicators for these measures using other routinely available prognostic variables. Examples of these newly developed surrogate measures are discussed in further detail below. These recent advances allow for more robust assessment of stroke outcomes and promote better standardization of methods in research using big data.

Stroke severity is one of the most important factors for predicting outcomes post-stroke [9, 12, 15], but information on this measure is often unavailable in big datasets. In the Australian Stroke Clinical Registry, information is routinely collected on a patient's ability to walk independently on admission to provide a simple, validated marker of stroke severity that is predictive of 30-day mortality and mRS scores [39, 72]. In studies where information on stroke severity cannot be obtained through data linkage with a stroke registry, alternative surrogate measures are commonly used to infer stroke severity, such as the Glasgow Coma Scale [9, 14], mode of arrival to hospital [9], or length of stay in hospital [28]. Moreover, researchers have recently developed a new measure of stroke severity that is predictive of 30-day mortality using a combination of variables routinely collected in big data, including age, sex, arrival by ambulance, transfer to a stroke hospital, use of mechanical ventilation, and triage scores [19].

Other new surrogate measures of stroke outcome developed for use in big data include the *hospital frailty risk score*, the *FRAC-Stroke score*, and the *home-time* measure. The hospital frailty risk score is derived using International Statistical Classification of Diseases and other Related Health Problems 10th revision (ICD-10) codes for 109 conditions associated with frailty, including cognitive impairment, delirium, consciousness, falls, and urinary incontinence [35••]. This measure has been shown to be valid and reliable for predicting multiple poor outcomes after stroke, including 30-day mortality, 90-day readmissions, and HRQoL between 90 and 180 days [35••]. The FRAC-Stroke score differs from the hospital frailty risk score as it can be used to identify patients at elevated risk of low-trauma fracture after stroke who could benefit from pharmacotherapy or bone densitometry screening [73••].

Home-time is defined as the number of days after stroke admission that a patient is alive and not hospitalized [74–76], and may be considered a more pragmatic indicator of global disability than examining individual components of readmissions and mortality. During the first 90 days post-stroke, an average 55 to 60 days are spent at home for people with ischemic stroke [74, 77], 49 days after subarachnoid hemorrhage [74], and 0 days after ICH [74, 77]. Greater stroke severity [74, 76], older age [18, 77], and reduced functional recovery [74–77] are all associated with reduced 90-day home-time. Receiving endovascular treatment may increase 90-day home-time by 10 days among those with ischemic stroke [18]. However, despite the good external validity of the home-time measure, heterogeneity in health service practices across jurisdictions may lead to variations in its estimation and limit its generalisability.

Use of big data for pharmaco-epidemiology can also present additional methodological challenges for researchers [78••]. For example, the calculation of medication

adherence in big data requires information on the intended duration of each prescription (known as the prescribed daily dose). However, this information is often not collected in prescription claims data, necessitating imputation of information on dose from other sources. In a recent exploratory study, imputing one dose per day for antihypertensive medicines (excluding beta-blockers) yielded similar estimates for 1-year adherence compared to a more complicated method involving the 75th percentile of refill time [78••]. Continued standardization and transparent reporting of pharmacoepidemiological methods is needed to ensure findings from big data studies are robust and generalizable.

Future Directions

Despite increased capacity to generate big data on stroke outcomes, there remain considerable delays between data generation and publication, thereby limiting the value of these data for driving real-time improvements in patient outcomes. Although machine learning methods have helped maximize the efficiency of big data for improving the prediction of stroke outcomes, greater rigor is needed in the reporting of these methods to allow their evaluation and external validation prior to more widespread adoption [59, 61]. Lack of studies from low- to middle-income countries highlights opportunities to develop the capacity to generate and harness big data for improving stroke outcomes in these settings. Also, there is a need to explore big data to unearth insights on stroke outcomes in rare patient groups and less-studied populations.

Conclusion

Ultimately, there have been many recent advances in the use of big data to explore outcomes after stroke, including mortality, readmission, medication use or adherence, functional outcomes, quality of life, and health costs. Based on the 5Vs framework, further work is needed to improve the *variety*, *velocity*, and *veracity* of big data-enabled research. Big data are driving rapid innovations in research of stroke outcomes and generating novel evidence to bridge knowledge and practice gaps.

Supplementary Information The online version contains supplementary material available at <https://doi.org/10.1007/s11910-022-01180-z>.

Funding Open Access funding enabled and organized by CAUL and its Member Institutions. LD is supported by a Research Training Program (RTP) scholarship from the Australian Government. AGT (1042600) receives funding from the National Health & Medical Research Council (Australia) outside the submitted work. JK (#102043), LN (#105038)

and MFK (#105737) are supported by Future Leader Fellowships from the National Heart Foundation of Australia.

Compliance with Ethical Standards

Conflict of Interest MFK reported receiving restricted grants from Amgen outside the submitted work. The other authors report no conflicts.

Human and Animal Rights and Informed Consent This article does not contain any studies with human or animal subjects performed by any of the authors.

Open Access This article is licensed under a Creative Commons Attribution 4.0 International License, which permits use, sharing, adaptation, distribution and reproduction in any medium or format, as long as you give appropriate credit to the original author(s) and the source, provide a link to the Creative Commons licence, and indicate if changes were made. The images or other third party material in this article are included in the article's Creative Commons licence, unless indicated otherwise in a credit line to the material. If material is not included in the article's Creative Commons licence and your intended use is not permitted by statutory regulation or exceeds the permitted use, you will need to obtain permission directly from the copyright holder. To view a copy of this licence, visit <http://creativecommons.org/licenses/by/4.0/>.

References

Papers of particular interest, published recently, have been highlighted as:

- Of importance
- Of major importance

1. Feigin VL, Stark BA, Johnson CO, Roth GA, Bisignano C, Abady GG, et al. Global, regional, and national burden of stroke and its risk factors, 1990–2019: a systematic analysis for the Global Burden Of Disease Study 2019. *The Lancet Neurology*. 2021;20(10):795–820.
2. Donkor ES. Stroke in the 21(st) century: a snapshot of the burden, epidemiology, and quality of life. *Stroke Res Treat*. 2018;2018:3238165. <https://doi.org/10.1155/2018/3238165>.
3. Paige E, Doyle K, Jorm L, Banks E, Hsu MP, Nedkoff L, et al. A versatile big data health system for Australia: driving improvements in cardiovascular health. *Heart Lung Circ*. 2021;30(10):1467–76. <https://doi.org/10.1016/j.hlc.2021.04.023>.
4. Ung D, Kim J, Thrift AG, Cadilhac DA, Andrew NE, Sundarajan V, et al. Promising use of big data to increase the efficiency and comprehensiveness of stroke outcomes research. *Stroke*. 2019;50(5):1302–9. <https://doi.org/10.1161/STROKEAHA.118.020372>.
5. Olaronke I, Oluwaseun O, editors. Big data in healthcare: prospects, challenges and resolutions. 2016 Future Technologies Conference (FTC); 2016 6–7 Dec. 2016.
6. Wells G, Shea B, O'Connell D, Peterson J, Welch V, Losos M, et al. The Newcastle-Ottawa Scale (nos) for assessing the quality of nonrandomised studies in meta-analyses 2013 [Available from: http://www.ohri.ca/programs/clinical_epidemiology/oxford.asp.

7. Andreu-Perez J, Poon CC, Merrifield RD, Wong ST, Yang GZ. Big data for health. *IEEE J Biomed Health Inform.* 2015;19(4):1193–208. <https://doi.org/10.1109/JBHI.2015.2450362>.
- 8.● Chaudhary D, Khan A, Gupta M, Hu Y, Li J, Abedi V, et al. Obesity and mortality after the first ischemic stroke: is obesity paradox real? *PLoS ONE.* 2021;16(2):e0246877. <https://doi.org/10.1371/journal.pone.0246877>. **Being overweight or obese was associated with a reduced risk of 1-year mortality after stroke, the mechanisms of which are unclear.**
9. Gattellari M, Goumas C, Jalaludin B, Worthington J. The impact of disease severity adjustment on hospital standardised mortality ratios: results from a service-wide analysis of ischaemic stroke admissions using linked pre-hospital, admissions and mortality data. *PLoS ONE.* 2019;14(5):e0216325. <https://doi.org/10.1371/journal.pone.0216325>.
10. Ingrid L, von Euler M, Sunnerhagen KS. Association of prestroke medicine use and health outcomes after ischaemic stroke in Sweden: a registry-based cohort study. *BMJ Open.* 2020;10(3):e036159. <https://doi.org/10.1136/bmjopen-2019-036159>.
- 11.●● Kapral MK, Kurdyak P, Casaubon LK, Fang J, Porter J, Sheehan KA. Stroke care and case fatality in people with and without schizophrenia: a retrospective cohort study. *BMJ Open.* 2021;11(6):e044766. <https://doi.org/10.1136/bmjopen-2020-044766>. **The authors provided evidence that patients with stroke and comorbid schizophrenia had an elevated risk of death from both stroke-related and other causes than those without schizophrenia.**
12. Kim TJ, Lee JS, Yoon JS, Oh MS, Kim JW, Jung KH, et al. Impact of the dedicated neurointensivists on the outcome in patients with ischemic stroke based on the linked big data for stroke in Korea. *J Korean Med Sci.* 2020;35(21):e135. <https://doi.org/10.3346/jkms.2020.35.e135>.
13. Lynch EA, Labberton AS, Kim J, Kilkenny MF, Andrew NE, Lannin NA, et al. Out of sight, out of mind: long-term outcomes for people discharged home, to inpatient rehabilitation and to residential aged care after stroke. *Disabil Rehabil.* 2020;1–7. <https://doi.org/10.1080/09638288.2020.1852616>.
14. Overvad TF, Andersen SD, Larsen TB, Lip GYH, Sogaard M, Skjoth F, et al. Incidence and prognostic factors for recurrence of intracerebral hemorrhage in patients with and without atrial fibrillation: a cohort study. *Thromb Res.* 2020;191:1–8. <https://doi.org/10.1016/j.thromres.2020.03.024>.
15. Phan HT, Gall SL, Blizzard CL, Lannin NA, Thrift AG, Anderson CS, et al. Sex differences in care and long-term mortality after stroke: Australian stroke clinical registry. *J Womens Health (Larchmt).* 2019;28(5):712–20. <https://doi.org/10.1089/jwh.2018.7171>.
16. Skyrud KD, Vikum E, Hansen TM, Kristoffersen DT, Helgeland J. Hospital variation in 30-day mortality for patients with stroke; the impact of individual and municipal socio-demographic status. *J Am Heart Assoc.* 2019;8(14):e010148. <https://doi.org/10.1161/JAHA.118.010148>.
17. Vyas MV, Austin PC, Fang J, Laupacis A, Silver FL, Kapral MK. Immigration status, ethnicity, and long-term outcomes following ischemic stroke. *Neurology.* 2021;20. <https://doi.org/10.1212/WNL.00000000000011451>.
18. Yu AYY, Fang J, Kapral MK. One-year home-time and mortality after thrombolysis compared with nontreated patients in a propensity-matched analysis. *Stroke.* 2019;50(12):3488–93. <https://doi.org/10.1161/STROKEAHA.119.026922>.
19. Yu AYY, Austin PC, Rashid M, Fang J, Porter J, Hill MD, et al. Deriving a passive surveillance stroke severity indicator from routinely collected administrative data: the passv indicator. *Circ Cardiovasc Qual Outcomes.* 2020;13(2):e006269. <https://doi.org/10.1161/CIRCOUTCOMES.119.006269>.
20. Yung NCL, Wong CSM, Chan JKN, Or PCF, Chen EYH, Chang WC. Mortality in patients with schizophrenia admitted for incident ischemic stroke: a population-based cohort study. *Eur Neuropsychopharmacol.* 2020;31:152–7. <https://doi.org/10.1016/j.euroneuro.2019.12.107>.
- 21.● Zhang W, Anderson CS, Kilkenny MF, Kim J, Dewey HM, Andrew NE, et al. Hospital admissions prior to primary intracerebral haemorrhage and relevant factors associated with survival. *J Stroke Cerebrovasc Dis.* 2020;29(9):105026. <https://doi.org/10.1016/j.jstrokecerebrovasdis.2020.105026>. **The authors found that stroke severity was associated with a 4-fold greater risk of 180-day mortality among patients with intracerebral hemorrhage.**
- 22.●● Dalli LL, Kim J, Cadilhac DA, Greenland M, Sanfilippo FM, Andrew NE, et al. Greater adherence to secondary prevention medications improves survival after stroke or transient ischemic attack: a linked registry study. *Stroke.* 2021;52(11):3569–77. <https://doi.org/10.1161/STROKEAHA.120.033133>. **The authors reported that having a greater adherence within 1 year of hospital discharge, defined as ≥80% proportion of days covered, was associated with improved survival after stroke/TIA.**
- 23.● Dwyer M, Francis K, Peterson GM, Ford K, Gall S, Phan H, et al. Regional differences in the care and outcomes of acute stroke patients in Australia: an observational study using evidence from the Australian Stroke Clinical Registry (AuSCR). *BMJ Open.* 2021;11(4):e040418. <https://doi.org/10.1136/bmjopen-2020-040418>. **Compared to rural dwellers, urban dwellers more often report extreme problems with mobility (7% vs 5%) and self-care (12% vs 9%).**
- 24.●● Burneo JG, Antaya TC, Allen BN, Belisle A, Shariff SZ, Saposnik G. The risk of new-onset epilepsy and refractory epilepsy in older adult stroke survivors. *Neurology.* 2019;93(6):e568–77. <https://doi.org/10.1212/WNL.00000000000007895>. **It was reported that 1.1% of patients with stroke, aged ≥67 years, developed epilepsy within 2 years of hospital discharge, of whom 46% died within 5 years.**
25. Joundi RA, Saposnik G, Martino R, Fang J, Kapral MK. Timing of direct enteral tube placement and outcomes after acute stroke. *J Stroke Cerebrovasc Dis.* 2019;28(12):104401. <https://doi.org/10.1016/j.jstrokecerebrovasdis.2019.104401>.
26. Freburger JK, Chou A, Euloth T, Matcho B, Bilderback A. Association between use of rehabilitation in the acute care hospital and hospital readmission or mortality in patients with stroke. *Arch Phys Med Rehabil.* 2021;102(9):1700–7 e4. <https://doi.org/10.1016/j.apmr.2021.02.026>.
27. Kuohn LR, Leasure AC, Acosta JN, Vanent K, Murthy SB, Kamel H, et al. Cause of death in spontaneous intracerebral hemorrhage survivors: multistate longitudinal study. *Neurology.* 2020;95(20):e2736–45. <https://doi.org/10.1212/WNL.00000000000010736>.
28. Meyer AC, Torssander J, Talback M, Modig K. Parents survive longer after stroke than childless individuals: a prospective cohort study of Swedes over the age of 65. *Eur J Public Health.* 2019;29(6):1090–5. <https://doi.org/10.1093/eurpub/ckz053>.
- 29.●● Gabet A, Grave C, Chatignoux E, Tuppin P, Bejot Y, Olie V. Characteristics, management, and case-fatality of patients hospitalized for stroke with a diagnosis of COVID-19 in France. *Neuroepidemiology.* 2021;55(4):323–30. <https://doi.org/10.1159/000516670>. **It was reported that, among patients hospitalized with stroke, those with concurrent COVID-19 infection had an 85% increased rate of 3-month mortality than those without. This finding was more pronounced in patients with ischemic stroke, with a 2-fold greater rate of 3-month mortality observed among those with concurrent COVID-19 than those without.**

30. ●● Richter D, Krogias C, Eyding J, Bartig D, Grau A, Weber R. Comparison of stroke care parameters in acute ischemic stroke patients with and without concurrent COVID-19. A nationwide analysis *Neurol Res Pract*. 2020;2:48. <https://doi.org/10.1186/s42466-020-00095-9>. **The authors reported that COVID-19 infection was associated with a 2-fold greater risk of 3-month mortality among those with a history of stroke.**
31. Kapral MK, Shah BR, Green ME, Porter J, Griffiths R, Frymire E, et al. Hospital admission for stroke or transient ischemic attack among First Nations people with diabetes in Ontario: a population-based cohort study. *CMAJ Open*. 2020;8(1):E156–62. <https://doi.org/10.9778/cmajo.20190199>.
32. ●● Liao NS, Sidney S, Deosaransingh K, Van Den Eeden SK, Schwartz J, Alexeeff SE. Particulate air pollution and risk of cardiovascular events among adults with a history of stroke or acute myocardial infarction. *J Am Heart Assoc*. 2021;10(10):e019758. <https://doi.org/10.1161/JAHA.120.019758>. **Exposure to a low-dose particulate matter (PM_{2.5} < 12 μg/m³) over a year increases the risk of 5-year cardiovascular mortality by 2-fold among patients with a history of stroke.**
33. Brunner-La Rocca HP, Peden CJ, Soong J, Holman PA, Bogdanovskaya M, Barclay L. Reasons for readmission after hospital discharge in patients with chronic diseases—information from an international dataset. *PLoS ONE*. 2020;15(6):e0233457. <https://doi.org/10.1371/journal.pone.0233457>.
34. ●● Kapral MK, Austin PC, Jeyakumar G, Hall R, Chu A, Khan AM, et al. Rural-urban differences in stroke risk factors, incidence, and mortality in people with and without prior stroke. *Circ Cardiovasc Qual Outcomes*. 2019;12(2):e004973. <https://doi.org/10.1161/CIRCOUTCOMES.118.004973>. **In this study, the authors provided evidence on regional differences in mortality post-stroke. They found that dwelling in a rural area (vs. urban area) was associated with increased risk of mortality among Canadian residents.**
35. ●● Kilkenny MF, Phan HT, Lindley RI, Kim J, Lopez D, Dalli LL, et al. Utility of the hospital frailty risk score derived from administrative data and the association with stroke outcomes. *Stroke*. 2021;52(9):2874–81. <https://doi.org/10.1161/STROKEAHA.120.033648>. **The Frailty score, an emerging surrogate measure of stroke outcome, predicted multiple outcomes after stroke, including 30-day mortality, 90-day readmissions, and health-related quality of life.**
36. Yu AXX, Maclagan LC, Diong C, Austin PC, Kapral MK, Swartz RH, et al. Sex differences in care need and survival in patients admitted to nursing home poststroke. *Can J Neurol Sci*. 2020;47(2):153–9. <https://doi.org/10.1017/cjn.2019.335>.
37. Richter D, Eyding J, Weber R, Bartig D, Grau A, Hacke W, et al. Analysis of nationwide stroke patient care in times of COVID-19 pandemic in Germany. *Stroke*. 2021;52(2):716–21. <https://doi.org/10.1161/STROKEAHA.120.033160>.
38. Rumball-Smith J, Hider P. The validity of readmission rate as a marker of the quality of hospital care, and a recommendation for its definition. *N Z Med J*. 2009;122(1289):63–70.
39. Andrew NE, Kilkenny MF, Sundararajan V, Kim J, Faux SG, Thrift AG, et al. Hospital presentations in long-term survivors of stroke: causes and associated factors in a linked data study. *Stroke*. 2020;51(12):3673–80. <https://doi.org/10.1161/STROKEAHA.120.030656>.
40. Kilkenny MF, Dalli LL, Kim J, Sundararajan V, Andrew NE, Dewey HM, et al. Factors associated with 90-day readmission after stroke or transient ischemic attack: linked data from the Australian Stroke Clinical Registry. *Stroke*. 2020;51(2):571–8. <https://doi.org/10.1161/STROKEAHA.119.026133>.
41. ●● Mosalski S, Shiner CT, Lannin NA, Cadilhac DA, Faux SG, Kim J, et al. Increased relative functional gain and improved stroke outcomes: a linked registry study of the impact of rehabilitation. *J Stroke Cerebrovasc Dis*. 2021;30(10):106015. <https://doi.org/10.1016/j.jstrokecerebrovasdis.2021.106015>. **Patients with greater relative functional gain during inpatient rehabilitation following acute stroke/TIA were more than 10 times more likely to be independent at 90–180 days after stroke/TIA.**
42. Daras LC, Deutsch A, Ingber MJ, Hefele JG, Perloff J. Inpatient rehabilitation facilities' hospital readmission rates for Medicare beneficiaries treated following a stroke. *Top Stroke Rehabil*. 2021;28(1):61–71. <https://doi.org/10.1080/10749357.2020.1771927>.
43. Raja A, Trivedi PD, Dharmoon MS. Discharge against medical advice among neurological patients: characteristics and outcomes. *Health Serv Res*. 2020;55(5):681–9. <https://doi.org/10.1111/1475-6773.13306>.
44. Stroke Foundation. Secondary prevention. In: Clinical guidelines for stroke management. Stroke Foundation. 2021. <https://informe.org.au/guidelines/clinical-guidelines-for-stroke-management>. Accessed 15 Sep 2021.
45. Powers WJ, Rabinstein AA, Ackerson T, Adeoye OM, Bambakidis NC, Becker K, et al. Guidelines for the early management of patients with acute ischemic stroke: 2019 update to the 2018 guidelines for the early management of acute ischemic stroke: a guideline for healthcare professionals from the American Heart Association/American Stroke Association. *Stroke*. 2019;50(12):e344–418. <https://doi.org/10.1161/STR.0000000000000211>.
46. ●● Dalli LL, Kim J, Thrift AG, Andrew NE, Sanfilippo FM, Lopez D, et al. Patterns of use and discontinuation of secondary prevention medications after stroke. *Neurology*. 2021;96(1):e30–41. <https://doi.org/10.1212/WNL.0000000000000211>. **The authors found that up to one-third of patients with stroke discontinue their medication within 1 year of discharge.**
47. Barrett E, Paige E, Welsh J, Korda RJ, Joshy G, Martin M, et al. Differences between men and women in the use of preventive medications following a major cardiovascular event: Australian prospective cohort study. *Preventive medicine reports*. 2021;22:101342. <https://doi.org/10.1016/j.pmedr.2021.101342>.
48. Welsh J, Paige E, Banks E, Joshy G, Brieger D, Korda RJ. Psychological distress and medication use for secondary prevention of cardiovascular events: evidence from a large-scale population-based cohort study. *J Psychosom Res*. 2019;124:109748. <https://doi.org/10.1016/j.jpsychores.2019.109748>.
49. Brown AW, Lee M, Lennon RJ, Niewczyk PM. Functional performance and discharge setting predict outcomes 3 months after rehabilitation hospitalization for stroke. *J Stroke Cerebrovasc Dis*. 2020;29(5):104746. <https://doi.org/10.1016/j.jstrokecerebrovasdis.2020.104746>.
50. Holodinsky JK, Yu AXX, Kapral MK, Austin PC. Comparing regression modeling strategies for predicting hometime. *BMC Med Res Methodol*. 2021;21(1):138. <https://doi.org/10.1186/s12874-021-01331-9>.
51. ● Phan HT, Gall SL, Blizzard CL, Lannin NA, Thrift AG, Anderson CS, et al. Sex differences in quality of life after stroke were explained by patient factors, not clinical care: evidence from the Australian Stroke Clinical Registry. *Eur J Neurol*. 2021;28(2):469–78. <https://doi.org/10.1111/ene.14697>. **The authors found no sex difference in the overall post-stroke/TIA HRQoL. However, they found that females were 8–16% more likely to report problems related to usual activities, anxiety/depression, or pain/discomfort.**
52. Balestroni G, Bertolotti G. [euroqol-5d (eq-5d): An instrument for measuring quality of life. *Monaldi Arch Chest Dis*. 2012;78(3):155–9. <https://doi.org/10.4081/monaldi.2012.121>.
53. Luengo-Fernandez R, Violato M, Candio P, Leal J. Economic burden of stroke across Europe: a population-based cost analysis.

- Eur Stroke J. 2020;5(1):17–25. <https://doi.org/10.1177/2396987319883160>.
54. Stroke Foundation. The economic impact of stroke in Australia, Deloitte Access Economics. 2020. <https://strokefoundation.org.au/News/2020/11/04/02/57/No%20Postcode%20Untouched>. Accessed 15 Sep 2021.
 55. Griffith LE, Gruneir A, Fisher K, Panjwani D, Gafni A, Patterson C, et al. Insights on multimorbidity and associated health service use and costs from three population-based studies of older adults in Ontario with diabetes, dementia and stroke. *BMC Health Serv Res*. 2019;19(1):313. <https://doi.org/10.1186/s12913-019-4149-3>.
 56. Qiao D, Zhang Y, Rehman AU, Khosravi MR. Big data-enabled analysis of DRGs-based payment on stroke patients in Jiaozuo. *China J Healthc Eng*. 2020;2020:6690019. <https://doi.org/10.1155/2020/6690019>.
 57. Hoang MT, Kareholt I, von Euler M, Jonsson L, von Koch L, Eriksdotter M, et al. Costs of inpatient rehabilitation for ischemic stroke in patients with dementia: a cohort Swedish register-based study. *J Alzheimers Dis*. 2020;73(3):967–79. <https://doi.org/10.3233/JAD-190749>.
 58. Rozjabek HM, Coleman CI, Ashton V, Laliberte F, Oyefesobi P, Lejeune D, et al. Healthcare costs of stroke and major bleeding in patients with atrial fibrillation treated with non-vitamin k antagonist oral anticoagulants. *J Med Econ*. 2019;22(8):751–9. <https://doi.org/10.1080/13696998.2019.1603156>.
 59. Wang W, Kiik M, Peek N, Curcin V, Marshall JJ, Rudd AG, et al. A systematic review of machine learning models for predicting outcomes of stroke with structured data. *PLoS ONE*. 2020;15(6):e0234722. <https://doi.org/10.1371/journal.pone.0234722>.
 60. Darabi N, Hosseinichimeh N, Noto A, Zand R, Abedi V. Machine learning-enabled 30-day readmission model for stroke patients. *Front Neurol*. 2021;12:638267. <https://doi.org/10.3389/fneur.2021.638267>.
 61. Drozdowska BA, Singh S, Quinn TJ. Thinking about the future: a review of prognostic scales used in acute stroke. *Front Neurol*. 2019;10:274. <https://doi.org/10.3389/fneur.2019.00274>.
 - 62.●● Abedi V, Avula V, Razavi SM, Bavishi S, Chaudhary D, Shahjouei S, et al. Predicting short and long-term mortality after acute ischemic stroke using EHR. *J Neurol Sci*. 2021;427:117560. <https://doi.org/10.1016/j.jns.2021.117560>. **Machine learning algorithms corroborated that age, hemoglobin, and body mass index are the top three most important predictors of mortality within 24 months after stroke, in the absence of stroke severity, and that laboratory-based variables rank higher than comorbidities (e.g., HbA1C vs. presence of history of diabetes) in predicting stroke outcomes.**
 63. Heo TS, Kim YS, Choi JM, Jeong YS, Seo SY, Lee JH, et al. Prediction of stroke outcome using natural language processing-based machine learning of radiology report of brain MRI. *J Pers Med*. 2020;10(4). <https://doi.org/10.3390/jpm10040286>.
 64. Lineback CM, Garg R, Oh E, Naidech AM, Holl JL, Prabhakaran S. Prediction of 30-day readmission after stroke using machine learning and natural language processing. *Frontiers in Neurology*. 2021;12:1069
 65. Selles RW, Andrinopoulou ER, Nijland RH, van der Vliet R, Slaman J, van Wegen EE, et al. Computerised patient-specific prediction of the recovery profile of upper limb capacity within stroke services: the next step. *J Neurol Neurosurg Psychiatry*. 2021;92(6):574–81. <https://doi.org/10.1136/jnnp-2020-324637>.
 66. Ge Y, Wang Q, Wang L, Wu H, Peng C, Wang J, et al. Predicting post-stroke pneumonia using deep neural network approaches. *Int J Med Inform*. 2019;132:103986. <https://doi.org/10.1016/j.ijmedinf.2019.103986>.
 67. Lienhart AM, Kramer D, Jauk S, Gugatschka M, Leodolter W, Schlegl T. Multivariable risk prediction of dysphagia in hospitalized patients using machine learning. *Stud Health Technol Inform*. 2020;271:31–8. <https://doi.org/10.3233/SHTI200071>.
 68. Kogan E, Twyman K, Heap J, Milentijevic D, Lin JH, Alberts M. Assessing stroke severity using electronic health record data: a machine learning approach. *BMC Med Inform Decis Mak*. 2020;20(1):8. <https://doi.org/10.1186/s12911-019-1010-x>.
 69. Bacchi S, Oakden-Rayner L, Menon DK, Jannes J, Kleinig T, Koblar S. Stroke prognostication for discharge planning with machine learning: a derivation study. *J Clin Neurosci*. 2020;79:100–3. <https://doi.org/10.1016/j.jocn.2020.07.046>.
 70. Patel PD, Salwi S, Liles C, Mistry AM, Mistry EA, Fusco MR, et al. Creation and validation of a stroke scale to increase utility of national inpatient sample administrative data for clinical stroke research. *J Stroke Cerebrovasc Dis*. 2021;30(4):105658. <https://doi.org/10.1016/j.jstrokecerebrovasdis.2021.105658>.
 71. Bustamante A, Garcia-Berrosco T, Rodriguez N, Llombart V, Ribo M, Molina C, et al. Ischemic stroke outcome: a review of the influence of post-stroke complications within the different scenarios of stroke care. *Eur J Intern Med*. 2016;29:9–21. <https://doi.org/10.1016/j.ejim.2015.11.030>.
 72. Cadilhac DA, Kilkenny MF, Levi CR, Lannin NA, Thrift AG, Kim J, et al. Risk-adjusted hospital mortality rates for stroke: evidence from the Australian Stroke Clinical Registry (AuSCR). *Med J Aust*. 2017;206(8):345–50. <https://doi.org/10.5694/mja16.00525>.
 - 73.●● Smith EE, Fang J, Alibhai SM, Cram P, Cheung AM, Casaubon LK, et al. Derivation and external validation of a scoring system for predicting fracture risk after ischemic stroke in a Canadian cohort. *JAMA Neurol*. 2019;76(8):925–31. <https://doi.org/10.1001/jamaneurol.2019.1114>. **The authors provided evidence that the FRAC-Stroke score can be used to identify patients at elevated risk of low-trauma fracture after stroke who could benefit from pharmacotherapy or bone densitometry screening.**
 74. Gattellari M, Goumas C, Jalaludin B, Worthington J. Measuring stroke outcomes for 74 501 patients using linked administrative data: system-wide estimates and validation of ‘home-time’ as a surrogate measure of functional status. *Int J Clin Pract*. 2020;74(6):e13484. <https://doi.org/10.1111/ijcp.13484>.
 75. Sung SF, Su CC, Hsieh CY, Cheng CL, Chen CH, Lin HJ, et al. Home-time as a surrogate measure for functional outcome after stroke: a validation study. *Clin Epidemiol*. 2020;12:617–24. <https://doi.org/10.2147/CLEP.S245817>.
 76. McDermid I, Barber M, Dennis M, Langhorne P, Macleod MJ, McAlpine CH, et al. Home-time is a feasible and valid stroke outcome measure in national datasets. *Stroke*. 2019;50(5):1282–5. <https://doi.org/10.1161/STROKEAHA.118.023916>.
 77. Yu AYY, Fang J, Porter J, Austin PC, Smith EE, Kapral MK. Hospital-based cohort study to determine the association between home-time and disability after stroke by age, sex, stroke type and study year in Canada. *BMJ Open*. 2019;9(11):e031379. <https://doi.org/10.1136/bmjopen-2019-031379>.
 - 78.●● Ung D, Dalli LL, Lopez D, Sanfilippo FM, Kim J, Andrew NE, et al. Assuming one dose per day yields a similar estimate of medication adherence in patients with stroke: an exploratory analysis using linked registry data. *Br J Clin Pharmacol*. 2021;87(3):1089–97. <https://doi.org/10.1111/bcp.14111>. **It was reported that assuming a daily dose of one tablet per day yields a similar estimate of medication adherence after stroke/TIA compared to other more complicated methods of estimating doses.**

Publisher's Note Springer Nature remains neutral with regard to jurisdictional claims in published maps and institutional affiliations.