

# Gonadotropin-releasing hormone receptor inhibits triple-negative breast cancer proliferation and metastasis

Journal of International Medical Research  
50(3) 1–13

© The Author(s) 2022

Article reuse guidelines:

[sagepub.com/journals-permissions](https://sagepub.com/journals-permissions)

DOI: 10.1177/03000605221082895

[journals.sagepub.com/home/imr](https://journals.sagepub.com/home/imr)



Cai-Ping Chen and Xiang Lu 

## Abstract

**Background:** Gonadotropin-releasing hormone receptor (GnRHR) is expressed in several malignant tumors and inhibits the proliferation and metastasis of cancer cells, but its role in triple-negative breast cancers (TNBCs) is unclear. This study investigated the biological effects of GnRHR and their influence on TNBC prognosis.

**Methods:** The GSE21653 database was used to obtain information about GnRHR expression and clinicopathological factors in patients with TNBC. GnRHR was activated in cultured MDA-MB-231 and MDA-MB-468 cells by leuprolide acetate and antagonized by elagolix sodium. Cell proliferation was assessed by the cell counting kit-8 and colony formation assays. Cell metastasis was detected by the wound healing assay and Transwell assay. Apoptosis and the cell cycle were investigated by flow cytometry. GnRHR protein expression was determined by western blotting.

**Results:** GnRHR mRNA expression was significantly higher in patients with TNBC than in hormone receptor+/human epidermal growth factor receptor (HER)2– and HER2+ patients with breast cancer. Patients with high GnRHR expression had significantly better disease-free survival than those with lower expression. Activated GnRHR significantly inhibited cell proliferation and metastasis, increased apoptosis, and enhanced GnRHR protein expression levels.

**Conclusion:** GnRHR inhibits TNBC proliferation and metastasis, suggesting it could be targeted for TNBC treatment.

## Keywords

Gonadotropin-releasing hormone receptor, triple-negative breast cancer, proliferation, metastasis, apoptosis, prognosis

Date received: 30 October 2021; accepted: 3 February 2022

The Affiliated Hospital of Jiaxing University, Jiaxing, China

### Corresponding author:

Xiang Lu, Affiliated Hospital of Jiaxing University,

No. 1882 Zhonghuan South Road, Jiaxing 314000, China.

E-mail: [netzerg@126.com](mailto:netzerg@126.com)



Creative Commons Non Commercial CC BY-NC: This article is distributed under the terms of the Creative

Commons Attribution-NonCommercial 4.0 License (<https://creativecommons.org/licenses/by-nc/4.0/>) which permits non-commercial use, reproduction and distribution of the work without further permission provided the original work is attributed as specified on the SAGE and Open Access pages (<https://us.sagepub.com/en-us/nam/open-access-at-sage>).

## Background

Triple-negative breast cancers (TNBCs) have a relatively high degree of malignancy. They do not express estrogen receptor (ER), progesterone receptor (PR), or human epidermal growth factor receptor-2 (HER2), so are not sensitive to endocrine therapy or HER2-targeted therapy.<sup>1</sup> A study involving more than 140,000 patients with TNBC reported a 5-year breast cancer-specific survival rate of 78.78%, which was lower than that of other breast cancer subtypes.<sup>2</sup> Identifying new therapeutic targets for TNBC will improve treatment and patient survival.<sup>3</sup>

Gonadotropin-releasing hormone receptor (GnRHR) is a transmembrane G protein-coupled receptor that is mainly expressed in the pituitary gland, but also in a variety of tumor tissues including hormone-dependent tumors (ER/PR-positive breast cancer, prostate cancer, and ovarian cancer) and hormone-independent tumors (ER/PR-negative breast cancer, glioma, and liver cancer). Tumor cells activate the GnRHR pathway through autocrine and paracrine mechanisms to regulate biological behavior.<sup>4-9</sup> The POEMS study found that the addition of gonadotropin-releasing hormone (GnRH) analogs to postoperative chemotherapy for ER/PR-negative breast cancer significantly improved disease-free survival (DFS) and overall survival (OS) ( $P=0.09$  and  $0.06$ , respectively).<sup>10</sup> In neoadjuvant chemotherapy, it was also observed that GnRH analogs improved the complete tumor remission rate of ER/PR-negative breast cancers.<sup>11</sup> These results indicate that the GnRHR pathway may be involved in TNBC therapeutic effects.

Preclinical studies showed that GnRHR inhibits tumor cell proliferation, migration, and angiogenesis.<sup>12-16</sup> However, the biological effects of GnRHR on MDA-MB-231 and MDA-MB-468 TNBC cells are not

clear. This study investigated the effect of GnRHR on the prognosis of TNBC and its biological effects on MDA-MB-231 and MDA-MB-468 cells *in vitro*.

## Materials and methods

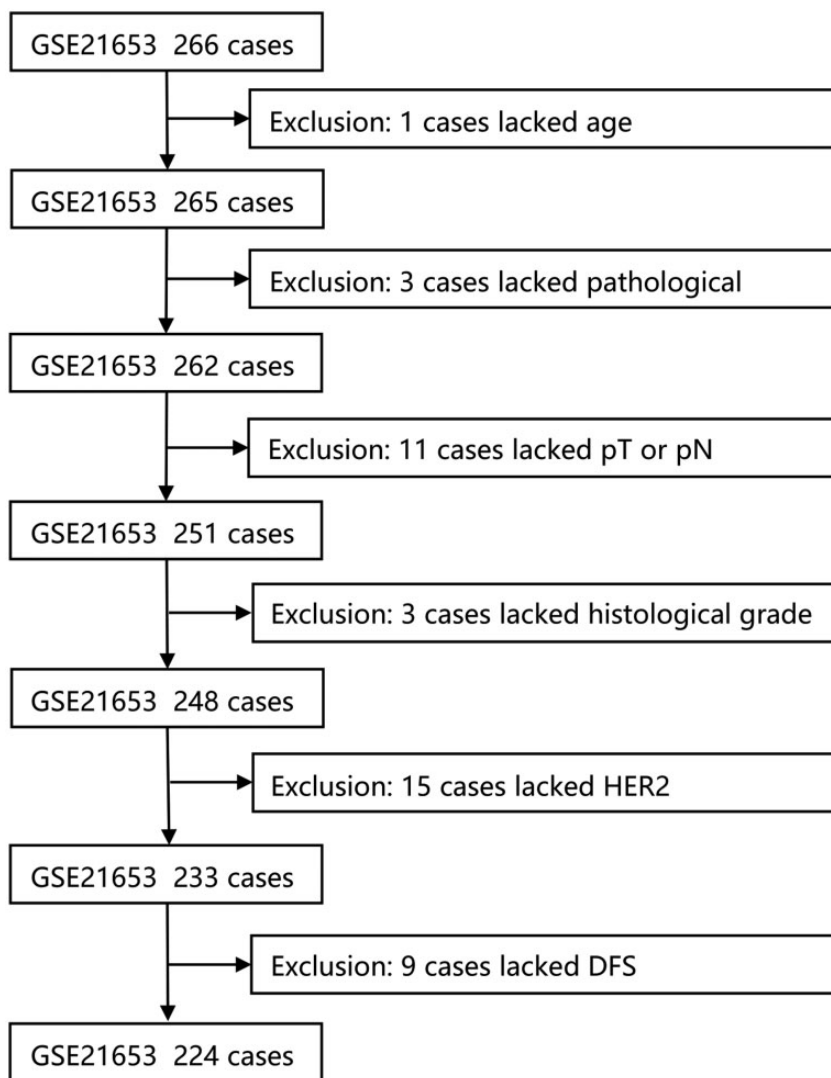
### Bioinformatics analysis

This study was approved by the medical ethics committee of the Affiliated Hospital of Jiaying University. mRNA expression data were obtained from the GEO database (no. GSE21653), which included the age, pathological type, histological grade, pT, pN, ER, PR, HER2, and DFS status of 266 patients with breast cancer.<sup>17,18</sup> Forty-two patients were excluded because of incomplete data; missing details included age ( $n=1$ ), pathological information ( $n=3$ ), pT or pN status ( $n=11$ ), histological grade ( $n=3$ ), HER2 status ( $n=15$ ), and DFS status ( $n=9$ ). A total of 224 cases with complete data were used for analysis (Figure 1). Because the GSE21653 dataset does not include immunohistochemical findings of Ki67 expression, we used ER, PR, and HER2 values to group patients into three categories, TNBC (ER-, PR-, and HER2-negative), HR+/HER2- (ER- or PR-positive and HER2-negative), and HER2+ (HER2-positive), which was previously shown to be accurate for identifying patients with TNBC.<sup>19,20</sup>

The platform of this dataset was GPL570, and the probes corresponding to GnRHR and GnRH were 211523\_at and 207987\_s\_at, respectively.

### Cell culture and grouping

MDA-MB-231 and MDA-MB-468 cells were obtained from the American Type Culture Collection (Manassas, VA, USA). They were cultured in Leibovitz's L-15 medium containing 10% fetal bovine serum (FBS; Gibco, Shanghai, China) and



**Figure 1.** Study flow chart. Forty-two patients were excluded because of incomplete data, including age ( $n = 1$ ), pathological information ( $n = 3$ ), pT or pN stage ( $n = 11$ ), histological grade ( $n = 3$ ), HER2 status ( $n = 15$ ), and DFS time ( $n = 9$ ). A total of 224 cases with complete data were used for analysis.

1% (10,000 U/mL) penicillin + (10,000  $\mu\text{g}/\text{mL}$ ) streptomycin at  $37^\circ\text{C}$  with 5%  $\text{CO}_2$ . Leuprolide acetate or elagolix sodium (Selleck, Shanghai, China) was added to the cells for 72 hours at a final concentration of 10  $\mu\text{mol}/\text{L}$ , which was confirmed by the manufacturer to have no significant effect on ion channels, enzymes, or

transporters.<sup>21</sup> Untreated cells were used as controls.

#### *Cell counting kit-8 (CCK-8) assay*

Cell viability was assessed using the CCK-8 assay. Briefly, cells were seeded in 96-well plates at  $4 \times 10^3/\text{well}$ , with multiple pores

added to each well. Cells were incubated for 24, 48, or 72 hours, then 10  $\mu$ L of CCK-8 was added to each well for 3 hours. The absorbance at 450 nm was analyzed in each well using a BIOBASE-EL10A microplate reader (BIOBASE, Shandong, China).

### *Colony formation assay*

Cells were plated in 12-well plates at 400 cells per well, then incubated for 7 days. They were fixed in methanol and stained with crystal violet, then images of cell colonies were photographed under a Leica DM500 microscope with  $\times 10$  magnification (Leica, Heidelberg, Germany). The experimental procedure was carried out at least three times. The colony formation rate was calculated as: (number of cell colonies/400)  $\times 100\%$ .

### *Apoptosis assay*

Cell apoptosis was determined by flow cytometry using an Annexin V-FITC/PI Kit (4A Biotech, Beijing, China) according to the manufacturer's instructions. Cells ( $2 \times 10^5$ ) were collected and washed with phosphate-buffered saline (PBS), then resuspended in 100  $\mu$ L of  $1 \times$  binding buffer and incubated with 5  $\mu$ L Annexin V/FITC at room temperature for 5 minutes. They were centrifuged at  $179 \times g$  for 5 minutes at  $4^\circ\text{C}$ , resuspended in 400  $\mu$ L PBS, and 10  $\mu$ L 20  $\mu\text{g/mL}$  propidium iodide solution was added, then the cells were subjected to flow cytometry at 488 nm.

### *Cell cycle assay*

The cell cycle distribution was determined using a Cell Cycle Analysis Kit (4A Biotech, Beijing, China) following the manufacturer's instructions. Cells ( $2 \times 10^5$ ) were collected and washed twice with ice-cold PBS. Then, 1 mL of cell suspension was added to 4 mL of ice-cold 95% ethanol and fixed at

$4^\circ\text{C}$  for 12 to 24 hours. The cells were centrifuged at  $179 \times g$  for 5 minutes at  $4^\circ\text{C}$ , then washed once with ice-cold PBS. After treatment with 0.4 ml propidium iodide for 30 minutes, the cells were subjected to fluorescence-activated cell sorting analysis.

### *Transwell assay*

Cell invasion was measured in Transwell chambers (Millipore, Billerica, MA, USA) with Matrigel coating. Cells ( $5 \times 10^4$ ) were seeded in the top chamber, and 600  $\mu$ L of 10% FBS medium was added to the lower chamber. After incubation for 48 hours, cells that had invaded the lower chamber were collected and stained with 0.1% crystal violet. Images of the invading cells were photographed under a microscope.

### *Wound healing assay*

Cells were plated in 24-well plates at  $3 \times 10^5$ /well, with two multiple pores in each well. When they were almost 100% confluent, a 10- $\mu$ l pipette tip was used to create an artificial wound. Culture was continued, and images of the wound at 0 and 24 hours were visualized under a microscope. The migration rate at three locations was measured as: Migration rate = (0 hour scratch width - 24 hour scratch width)/0 hour scratch width.

### *Western blotting*

Total protein was extracted from cells by washing them with pre-cooled PBS and lysing with 200  $\mu$ L  $1 \times$  loading buffer. Proteins were then run on sodium dodecyl sulfate-pulsed field gel electrophoresis, and electroblotted onto polyvinylidene fluoride membranes. Membranes were incubated with a primary anti-GnRHR antibody (Immunoway, Suzhou, China) at  $4^\circ\text{C}$  overnight, then incubated with a goat anti-rabbit IgG secondary antibody (Proteintech Group, Wuhan, China) for 1 hour at room

temperature. for 1 hour at room temperature. Visualization was carried out using a chemiluminescence system (Leica).

### Statistical analysis

Experimental data were analyzed by SPSS 22.0 statistical software (IBM Corp., Armonk, NY, USA). Data with a non-normal distribution were tested by the non-parametric Mann–Whitney U test, and the Kendall rank correlation coefficient method was used for correlation analysis. Pearson's chi-square test was used to analyze categorical data. The Kaplan–Meier method was used for survival analysis, and the log-rank test was used to test the difference in survival curves between groups. Multivariate survival analysis was performed with the Cox regression model. Cell data were averaged from three independent experiments. All statistical tests were bilateral tests, and differences were considered to be statistically significant at  $P < 0.05$ .

## RESULTS

### High expression of GnRHR is associated with increased DFS

Of the 224 patients with complete data obtained from GSE21653, 81 had TNBC, 120 had HR+/HER2–, and 23 had HER2+ breast cancer (Table 1). GnRHR ( $P < 0.05$ ) and GnRH ( $P < 0.001$ ) mRNA expression was significantly higher in patients with TNBC than in other patients (Figure 2a, b). In the TNBC group, there was a positive correlation between GnRHR and GnRH (correlation coefficient = 0.247,  $P = 0.001$ , Figure 2c). In the TNBC group, patients were divided into low, medium, and high expression groups according to GnRHR mRNA expression, with 27 cases in each group. The age difference among the three groups was statistically significant,

**Table 1.** Patients and sample characteristics.

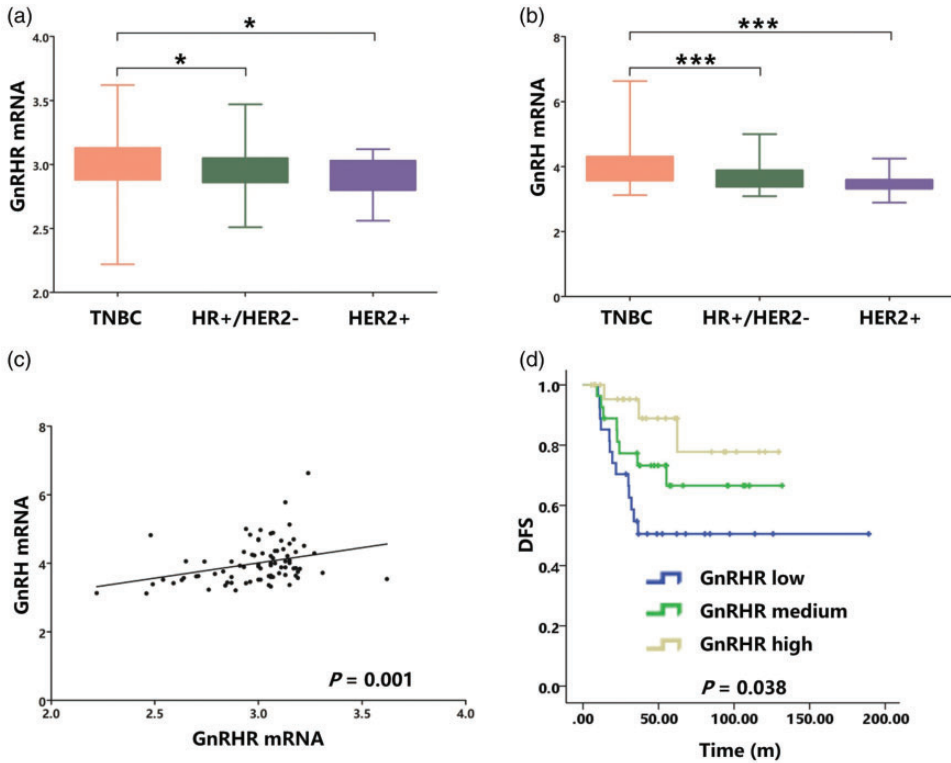
	Patient groups		
	TNBC (n = 81)	HR+/HER2– (n = 120)	HER2+ (n = 23)
Age (years)			
≤55	40	60	14
>55	41	60	9
Pathology			
IDC	68	95	22
others	13	25	1
pT			
1	16	29	5
2	45	58	10
3	20	33	8
pN			
0	50	46	8
≥1	31	74	15
Tumor grade			
1	7	32	0
2	16	52	7
3	58	36	16

TNBC, triple-negative breast cancer; HR, hormone receptor; HER2, human epidermal growth factor receptor-2; IDC, invasive ductal carcinoma; pT, tumor size; pN, number of positive lymph nodes.

with GnRHR expression in patients ≤55 years old in the low expression group being significantly lower than in medium and high expression groups ( $P = 0.023$ , Table 2). Survival analysis showed that DFS was significantly longer in patients with TNBC with high GnRHR expression than in those with low or medium GnRHR expression ( $P = 0.038$ ; Figure 2d). Multivariate survival analysis suggested that GnRHR was an independent influencing factor of DFS ( $P = 0.004$ ; odds ratio 0.428, 95% confidence interval: 0.242–0.757); Table 3).

### Activated GnRHR inhibits TNBC cell proliferation

To study the effect of activated GnRHR on TNBC cell proliferation, we used leuprolide



**Figure 2.** Expression of GnRHR and GnRH mRNA. (a) GnRHR mRNA expression in the TNBC group was significantly higher than in the other two groups. (b) GnRH mRNA expression in the TNBC group was significantly higher than in the other two groups. (c) Positive correlation between GnRHR and GnRH in TNBC. (d) DFS was significantly longer in TNBC patients with high GnRHR expression. \* $P < 0.05$ , \*\* $P < 0.01$ , \*\*\* $P < 0.001$ .

TNBC, triple-negative breast cancer; GnRHR, gonadotropin-releasing hormone receptor; GnRH, gonadotropin-releasing hormone; DFS, disease-free survival.

acetate to simulate GnRHR activation and elagolix sodium to simulate GnRHR antagonism in MDA-MB-231 and MDA-MB-468 cells *in vitro*.<sup>22–24</sup> After adding leuprolide acetate for 72 hours, the OD values of both cell types at 450 nm were significantly lower than those of the control group in the CCK8 assay ( $P < 0.01$ ). Similarly, the OD values of both cell types were significantly higher than those of the control group after adding elagolix sodium for 72 hours ( $P < 0.05$ ; Figure 3a). This suggested that activated GnRHR inhibited cell viability, while GnRHR antagonism

promoted cell viability. The clone formation rate of MDA-MB-231 and MDA-MB-468 cells was significantly lower than that of the control group after 7 days of adding leuprolide acetate ( $P < 0.01$ ), but did not increase significantly compared with the control group after the addition of elagolix sodium (Figure 3b). This indicated that activated GnRHR inhibited colony formation. Western blotting showed that leuprolide increased GnRHR protein expression in MDA-MB-231 and MDA-MB-468 cells, while elagolix decreased it (Figure 3c).

**Table 2.** Relationship between GnRHR expression and clinicopathological characteristics in TNBC.

	n	GnRHR expression			$\chi^2$	P
		low (n = 27)	medium (n = 27)	high (n = 27)		
Age (years)					7.507	<b>0.023</b>
≤55	40	18	14	8		
>55	41	9	13	19		
Pathology					2.382	0.304
IDC	68	21	25	22		
others	13	6	2	5		
pT					2.133	0.711
1	16	6	6	4		
2	45	14	13	18		
3	20	7	8	5		
pN					1.986	0.370
0	50	17	19	14		
≥1	31	10	8	13		
Grade					2.673	0.614
1	7	3	1	3		
2	16	5	4	7		
3	58	19	22	17		

TNBC, triple-negative breast cancer; GnRHR, gonadotropin-releasing hormone receptor; IDC, invasive ductal carcinoma; pT, tumor size; pN, number of positive lymph nodes.

**Table 3.** Multivariate analysis of DFS in TNBC.

	Groups	$\beta$	P	OR (95% CI)
GnRHR	low, medium, high	-0.848	0.004	0.428 (0.242–0.757)
Age (years)	≤55, >55	0.12	0.483	1.012 (0.979–1.046)
Pathology	IDC, others	0.318	0.538	1.374 (0.500–3.779)
Grade	1, 2, 3	0.042	0.906	1.043 (0.520–2.092)
pT	1, 2, 3	-0.107	0.763	0.899 (0.450–1.797)
pN	0, ≥1	1.388	0.004	4.005 (1.539–10.426)

OR, odds ratio; CI, confidence interval; GnRHR, gonadotropin-releasing hormone receptor; IDC, invasive ductal carcinoma.

### Activated GnRHR inhibits TNBC cell metastasis

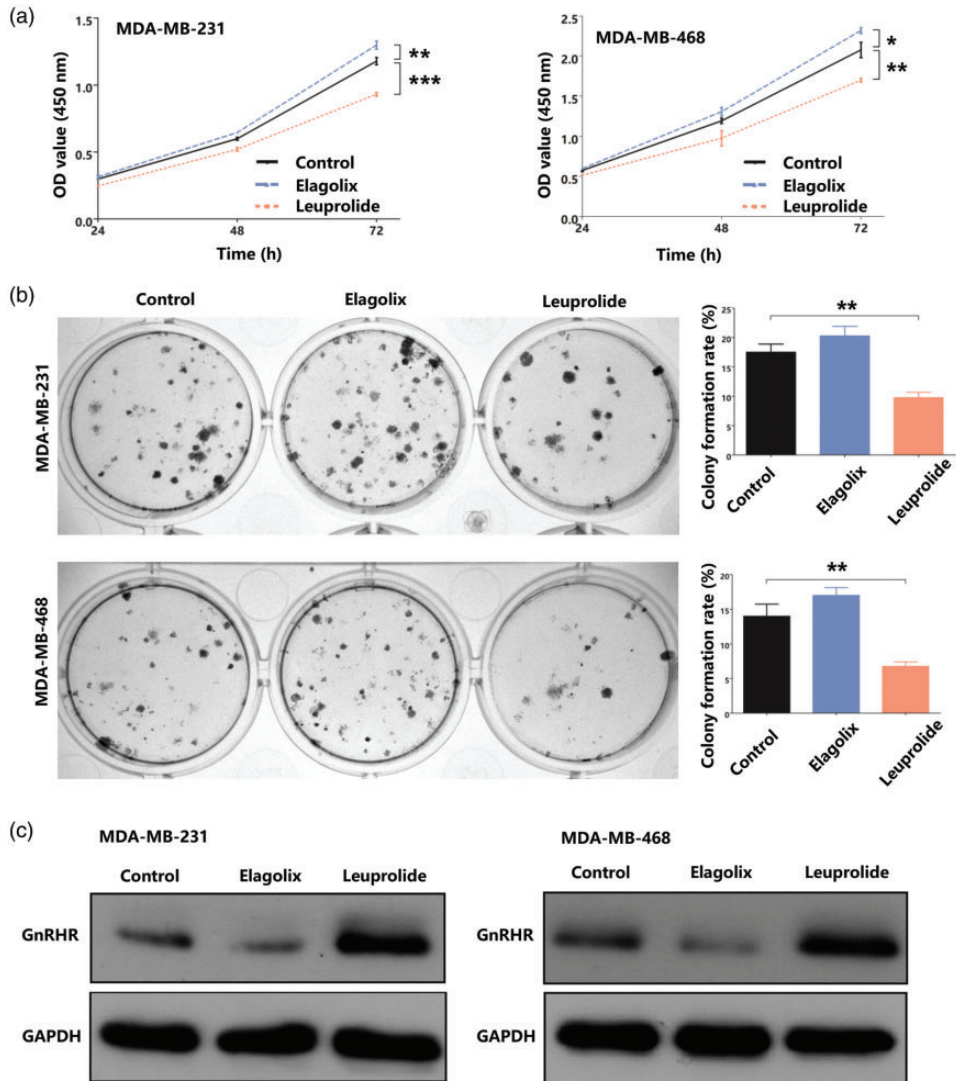
To explore the effect of activated GnRHR on the migration and invasion of TNBC cells, we used the wound healing assay and Transwell assay. After adding leuprolide acetate for 24 hours, both the migration rate ( $P < 0.001$ ; Figure 4a) and invasion ( $P < 0.01$ ; Figure 4b) of MDA-MB-231 and

MDA-MB-468 cells were significantly lower than that of the control group. This suggested that activated GnRHR inhibited migration and invasion capabilities of TNBC cells.

### Activated GnRHR promotes apoptosis in TNBC cells

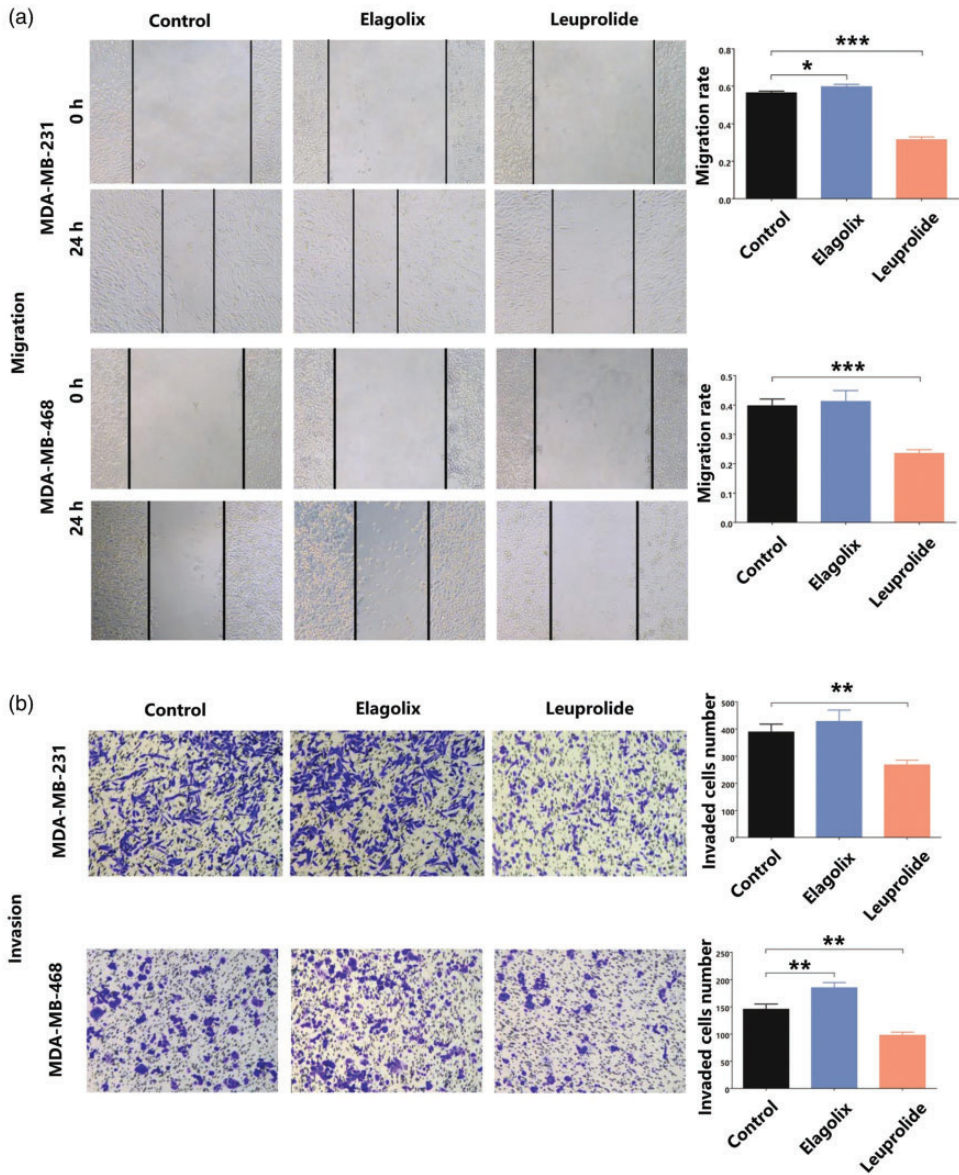
Next, we used flow cytometry to determine the effects of activated GnRHR on TNBC





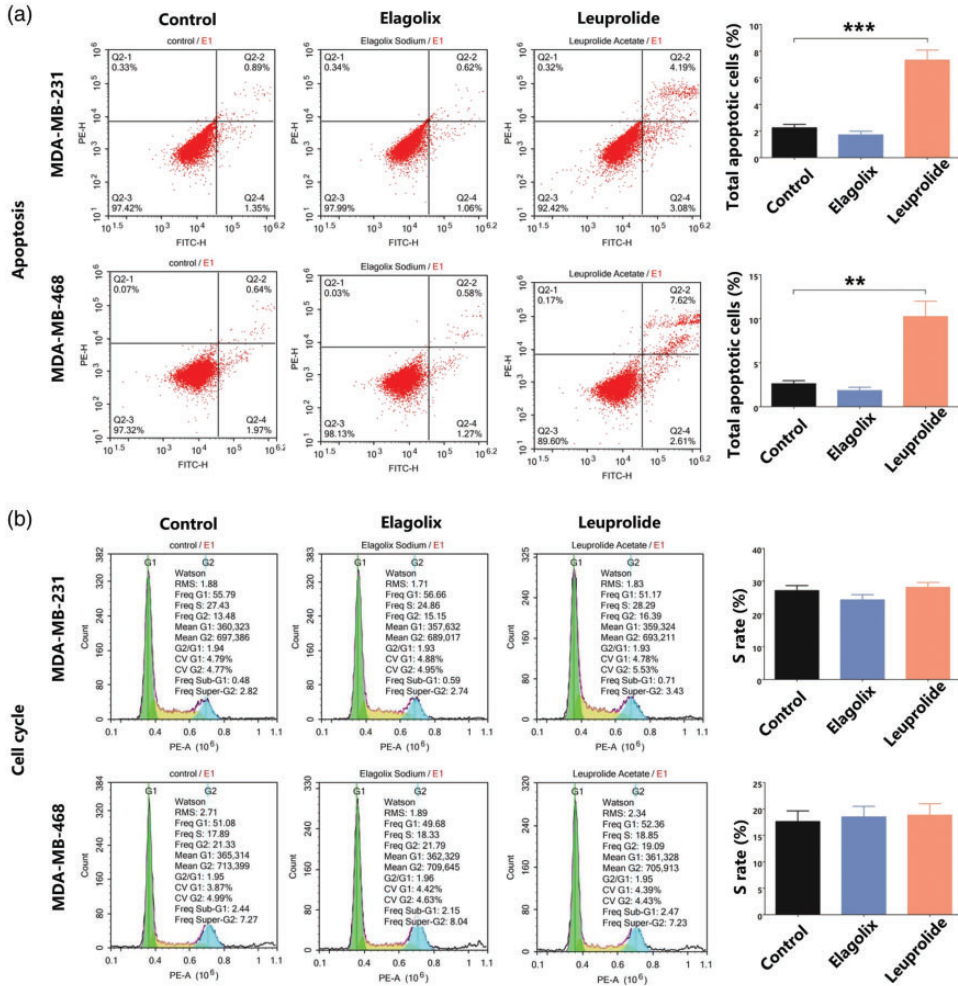
**Figure 3.** Activated GnRHR inhibits TNBC cell proliferation. (a) CCK8 assay analysis of MDA-MB-231 and MDA-MB-468 cells. OD values at 450 nm were significantly lower after adding leuprolide acetate than controls. OD values were significantly higher after adding elagolix sodium than controls. (b) The clone formation rate of MDA-MB-231 and MDA-MB-468 cells was significantly lower after adding leuprolide acetate than controls, but was unchanged after adding elagolix sodium. (c) Activated GnRHR increased the expression of GnRHR in MDA-MB-231 and MDA-MB-468 cells, and antagonized GnRHR decreased the expression of GnRHR. \* $P < 0.05$ , \*\* $P < 0.01$ , \*\*\* $P < 0.001$ . TNBC, triple-negative breast cancer; CCK, cell counting kit; OD, optical density; GnRHR, gonadotropin-releasing hormone receptor.





**Figure 4.** Activated GnRHR inhibits TNBC cell metastasis. (a) MDA-MB-231 and MDA-MB-468 cell migration was significantly lower after adding leuprolide acetate than controls. (b) MDA-MB-231 and MDA-MB-468 cell invasion was significantly lower after adding leuprolide acetate than controls. \* $P < 0.05$ , \*\* $P < 0.01$ , \*\*\* $P < 0.001$ .

GnRHR, gonadotropin-releasing hormone receptor; TNBC, triple-negative breast cancer.



**Figure 5.** GnRHR effects on TNBC cell apoptosis and the cell cycle. (a) Significantly more MDA-MB-231 and MDA-MB-468 cells showed apoptosis after adding leuprolide acetate than controls. (b) The MDA-MB-231 and MDA-MB-468 cell S-phase rate was unchanged after adding leuprolide acetate or elagolix sodium compared with controls. \* $P < 0.05$ , \*\* $P < 0.01$ , \*\*\* $P < 0.001$ . GnRHR, gonadotropin-releasing hormone receptor; TNBC, triple-negative breast cancer.

cell apoptosis and the cell cycle. After adding leuprolide acetate for 72 hours, significantly higher numbers of apoptotic MDA-MB-231 and MDA-MB-468 cells were detected compared with controls, suggesting that activated GnRHR promoted apoptosis ( $P < 0.01$ ; Figure 5a). However,

there was no significant effect of either leuprolide acetate or elagolix sodium on the S-phase rate of MDA-MB-231 and MDA-MB-468 cells compared with controls, suggesting that the activation or antagonism of GnRHR had no effect on the cell cycle (Figure 5b).

## Discussion

This study showed that the expression of GnRHR and GnRH mRNA in patients with TNBC was significantly higher than in those with HR+/HER2- or HER2+ breast cancer, suggesting that GnRHR and GnRH play an important role in the occurrence and development of TNBC. GnRHR mRNA expression in older patients with TNBC was also higher than in younger patients, which could be because many were menopausal and low levels of estrogen upregulate GnRHR expression through a feedback mechanism.<sup>25</sup> However, this finding differed from previous studies; for example, Paradiso et al. detected a higher proportion of GnRHR protein-positive cases in premenopausal breast cancer patients.<sup>26</sup> The present study did not analyze GnRHR protein expression. Given that mRNA expression does not directly correlate with protein levels because translation is affected by multiple factors, we plan to evaluate the effects of GnRHR protein in a future study.

We used MDA-MB-231 and MDA-MB-468 cells as *in vitro* models of TNBC, which are both confirmed TNBC cell lines.<sup>27,28</sup> The addition of leuprolide to these cells activated GnRHR, resulting in decreased proliferation and mobility and increased apoptosis, while the addition of elagolix antagonized GnRHR, resulting in increased cell proliferation and mobility. These results suggest that activated GnRHR inhibits TNBC proliferation and metastasis, which is consistent with the improved DFS observed in patients with high GnRHR expression, and is similar to the role of GnRHR in other malignant tumors.<sup>12-16</sup>

## Conclusions

We showed that GnRHR inhibits proliferation and metastasis and promotes apoptosis in MDA-MB-231 and MDA-MB-468

TNBC cells. Once the molecular mechanism of this effect is understood, it might be possible to use GnRHR as a therapeutic target to improve the treatment of TNBC.


## Declaration of conflicting interest

The authors declare that there is no conflict of interest.

## Funding

The authors disclosed receipt of the following financial support for the research, authorship, and publication of this article: This study was funded by the Hospital Foundation of the Affiliated Hospital of Jiaxing University (2020YJZD016), and the Jiaxing Key Discipline of Medicine (Mastropathy, Innovation Subject, 2019-cx-04).

## ORCID iD

Xiang Lu  <https://orcid.org/0000-0002-7906-6701>

## References

1. Xie N, Xu Y, Zhong Y, et al. Clinicopathological characteristics and treatment strategies of triple-negative breast cancer patients with a survival longer than 5 years. *Front Oncol* 2021; 10: 617593.
2. Parise CA and Caggiano V. The Influence of socioeconomic status on racial/ethnic disparities among the ER/PR/HER2 breast cancer subtypes. *J Cancer Epidemiol* 2015; 2015: 813456.
3. Lyons TG. Targeted therapies for triple-negative breast cancer. *Curr Treat Options Oncol* 2019; 20: 82.
4. Corso MC, Cortasa SA, Schmidt AR, et al. Mammary gland-specific regulation of GNRH and GNRH-receptor gene expression is likely part of a local autoregulatory system in female vizcachas (Rodentia: Chinchillidae). *Gen Comp Endocrinol* 2020; 296: 113518.
5. Gründker C and Emons G. The role of gonadotropin-releasing hormone in cancer

- cell proliferation and metastasis. *Front Endocrinol (Lausanne)* 2017; 8: 187.
6. Hao D, Sun L, Hu X, et al. 99mTc-LHRH in tumor receptor imaging. *Oncology letters* 2017; 14: 569–578.
  7. Lajkó E, Spring S, Hegedüs R, et al. Comparative cell biological study of in vitro antitumor and antimetastatic activity on melanoma cells of GnRH-III-containing conjugates modified with short-chain fatty acids. *Beilstein J Org Chem* 2018; 14: 2495–2509.
  8. Jaszberenyi M, Schally AV, Block NL, et al. Inhibition of U-87 MG glioblastoma by AN-152 (AEZS-108), a targeted cytotoxic analog of luteinizing hormone-releasing hormone. *Oncotarget* 2013; 4: 422–432.
  9. Limonta P, Montagnani Marelli M, Mai S, et al. GnRH receptors in cancer: from cell biology to novel targeted therapeutic strategies. *Endocr Rev* 2012; 33: 784–811.
  10. Moore H, Unger JM, Phillips KA, et al. Final analysis of the prevention of early menopause study (POEMS)/SWOG Intergroup S0230. *J Natl Cancer Inst* 2019; 111: 210–213.
  11. Kim HJ, Yoon TI, Chae HD, et al. Concurrent gonadotropin-releasing hormone agonist administration with chemotherapy improves neoadjuvant chemotherapy responses in young premenopausal breast cancer patients. *J Breast Cancer* 2015; 18: 365–370.
  12. Buchholz S, Seitz S, Schally AV, et al. Triple-negative breast cancers express receptors for luteinizing hormone-releasing hormone (LHRH) and respond to LHRH antagonist cetrorelix with growth inhibition. *Int J Oncol* 2009; 35: 789–796.
  13. Everest HM, Hislop JN, Harding T, et al. Signaling and antiproliferative effects mediated by GnRH receptors after expression in breast cancer cells using recombinant adenovirus. *Endocrinology* 2001; 142: 4663–4672.
  14. Aguilar-Rojas A, Huerta-Reyes M, Maya-Núñez G, et al. Gonadotropin-releasing hormone receptor activates GTPase RhoA and inhibits cell invasion in the breast cancer cell line MDA-MB-231. *BMC Cancer* 2012; 12: 550.
  15. Morgan K, Stavrou E, Leighton SP, et al. Elevated GnRH receptor expression plus GnRH agonist treatment inhibits the growth of a subset of papillomavirus 18-immortalized human prostate cells. *The Prostate* 2011; 71: 915–928.
  16. Moretti RM, Mai S, Montagnani Marelli M, et al. Dual targeting of tumor and endothelial cells by gonadotropin-releasing hormone agonists to reduce melanoma angiogenesis. *Endocrinology* 2010; 151: 4643–4653.
  17. Sabatier R, Finetti P, Cervera N, et al. A gene expression signature identifies two prognostic subgroups of basal breast cancer. *Breast Cancer Res Treat* 2011; 126: 407–420.
  18. Sabatier R, Finetti P, Adelaide J, et al. Down-regulation of ECRG4, a candidate tumor suppressor gene, in human breast cancer. *PLoS one* 2011; 6: e27656.
  19. Goldhirsch A, Wood WC, Coates AS, et al. Strategies for subtypes—dealing with the diversity of breast cancer: highlights of the St. Gallen International Expert Consensus on the Primary Therapy of Early Breast Cancer 2011. *Ann Oncol* 2011; 22: 1736–1747.
  20. Huang Y, Wei L, Hu Y, et al. Multiparametric MRI-based radiomics models for predicting molecular subtype and androgen receptor expression in breast cancer. *Front Oncol* 2021; 11: 706733.
  21. Chen C, Wu D, Guo Z, et al. Discovery of sodium R-(+)-4-{2-[5-(2-fluoro-3-methoxyphenyl)-3-(2-fluoro-6-[trifluoromethyl]benzyl)-4-methyl-2,6-dioxo-3,6-dihydro-2H-pyrimidin-1-yl]-1-phenylethylamino}butyrate (elagolix), a potent and orally available nonpeptide antagonist of the human gonadotropin-releasing hormone receptor. *J Med Chem* 2008; 51: 7478–7485.
  22. Wilson AC, Meethal SV, Bowen RL, et al. Leuprolide acetate: a drug of diverse clinical applications. *Expert Opin Investig Drugs* 2007; 16: 1851–1863.
  23. Shebley M, Polepally AR, Nader A, et al. Clinical pharmacology of elagolix: an oral gonadotropin-releasing hormone receptor antagonist for endometriosis. *Clin Pharmacokinet* 2020; 59: 297–309.

24. Tzoupis H, Nteli A, Androutsou ME, et al. Gonadotropin-releasing hormone and GnRH receptor: structure, function and drug development. *Curr Med Chem* 2020; 27: 6136–6158.
25. Crowder ME and Nett TM. Pituitary content of gonadotropins and receptors for gonadotropin-releasing hormone (GnRH) and hypothalamic content of GnRH during the periovulatory period of the ewe. *Endocrinology* 1984; 114: 234–239.
26. Paradiso A, Pezzetta A, Cellamare G, et al. GnRH receptors in human breast cancer and its contiguous not-involved breast tissue. *J Endocrinol Invest*, 2000; 23: 90–96.
27. Hero T, Bühler H, Kouam PN, et al. The triple-negative breast cancer cell Line MDA-MB 231 is specifically inhibited by the ionophore salinomycin. *Anticancer Res* 2019; 39: 2821–2827.
28. Greenshields AL, Fernando W and Hoskin DW. The anti-malarial drug artesunate causes cell cycle arrest and apoptosis of triple-negative MDA-MB-468 and HER2-enriched SK-BR-3 breast cancer cells. *Exp Mol Pathol* 2019; 107: 10–22.