

Original Article  
Urology



OPEN ACCESS

Received: Nov 29, 2021  
Accepted: Feb 14, 2022  
Published online: Mar 8, 2022

Address for Correspondence:

Hong J. Lee, PhD

Medical Research Institute, Chungbuk National University, 1 Chungdae-ro, Seowon-gu, Cheongju 28644, Republic of Korea; Research Institute, e-biogen Inc., 48 Ttukseom-ro 17ga-gil, Seongdong-gu, Seoul 04785, Republic of Korea.  
Email: leehj71@gmail.com  
leehj71@chungbuk.ac.kr

Yun Seob Song, MD, PhD

Department of Urology, Soonchunhyang University Seoul Hospital, Soonchunhyang University School of Medicine, 59 Daesagwan-ro, Yongsan-gu, Seoul 04401, Republic of Korea.  
Email: yssong@schmc.ac.kr

\*Jae Heon Kim and Hee Jo Yang have contributed equally to this work.

© 2022 The Korean Academy of Medical Sciences.

This is an Open Access article distributed under the terms of the Creative Commons Attribution Non-Commercial License (<https://creativecommons.org/licenses/by-nc/4.0/>) which permits unrestricted non-commercial use, distribution, and reproduction in any medium, provided the original work is properly cited.

ORCID iDs

Jae Heon Kim <https://orcid.org/0000-0002-4490-3610>  
Hee Jo Yang <https://orcid.org/0000-0002-7195-806X>

# Enhanced Hypoxia-Associated Genes in Impaired Contractility From Bladder Outlet Obstruction

Jae Heon Kim <sup>1\*</sup>, Hee Jo Yang <sup>2\*</sup>, Hong J. Lee <sup>3</sup>, and Yun Seob Song <sup>1</sup>

<sup>1</sup>Department of Urology, Soonchunhyang University Seoul Hospital, Soonchunhyang University School of Medicine, Seoul, Korea

<sup>2</sup>Department of Urology, Soonchunhyang University Cheonan Hospital, Soonchunhyang University School of Medicine, Cheonan, Korea

<sup>3</sup>College of Medicine and Medical Research Institute, Chungbuk National University, Cheongju, Korea

## ABSTRACT

**Background:** Hypoxia damages the bladder wall and contributes to the initiation of bladder dysfunction. The change of hypoxia is not well known in impaired bladder contractility caused by long-term bladder outlet obstruction (BOO). We aimed to find out whether hypoxia of bladder tissue is present and what signaling mechanisms are involved in the decompensated bladder in BOO.

**Methods:** Twenty 6-week-old female Sprague-Dawley rats were divided into 2 groups, 10 rats each: group 1, sham operation; group 2, BOO for 8 weeks. Eight weeks after the onset of BOO, we did cystometric evaluation and processed polymerase chain reaction (PCR) array for hypoxia pathway using bladder tissues. The PCR array consists of 84 genes known to be involved in the hypoxic response, cell differentiation, and metabolism. We did quantitative PCR (qPCR) and immunohistochemical staining of bladder tissue for hypoxia.

**Results:** Eight genes were at least 2-fold upregulated and 3 genes were at least 2-fold downregulated in BOO group, compared with the sham operation group. The up-regulated genes (fold change) belonging to the hypoxia-inducible factor (HIF) 1 interactor included *Cdkn2a* (11.0), and the down-regulated genes belonging to HIF and co-transcription factors included *Hif3a* (-39.6) and *Per1* (-5.1) by BOO. Genes influenced each other by means of TGFβ1, TNF, and TP53.

**Conclusion:** Hypoxia genes were increased in impaired contractility because of long-term BOO. The gene expression profiles could explain the molecular mechanisms of hypoxia in impaired contractility because of long-term BOO.

**Keywords:** Hypoxia; Bladder; Obstruction

## INTRODUCTION

Bladder outlet obstruction (BOO) is a common outcome of benign prostatic hypertrophy. Bladder hypoxia is the result of high intravesical pressure that is generated to overcome the resistance to urinary flow in BOO. High intravesical pressure induces hypoxia by reducing the bladder blood flow and oxygen saturation in the blood. Blood vessel compression as a result of the contraction of muscles and intravesical pressure higher than intravascular pressure diminishes blood flow in bladder flow.<sup>1-5</sup> In BOO, this phase is prolonged and tissue ischemia

Hong J. Lee   
<https://orcid.org/0000-0003-2641-6437>  
 Yun Seob Song   
<https://orcid.org/0000-0002-0909-3341>

#### Funding

This research was supported by a grant from Soonchunhyang University Research Fund and the National Research Foundation of Korea (NRF) funded by the Ministry of Education, Science and Technology (grant No. 2021R1A2C1004163).

#### Conflict of Interest

All authors have completed the disclosure form and declare that: (i) no support, financial or otherwise, has been received from any organization that may have an interest in the submitted work; and (ii) there are no other relationships or activities that could appear to have influenced the submitted work.

#### Author Contributions

Conceptualization: Lee HJ, Song YS. Data curation: Kim JH. Formal analysis: Kim JH, Lee HJ, Song YS. Funding acquisition: Song YS. Methodology: Kim JH, Lee HJ, Song YS. Project administration: Kim JH, Song YS. Resources: Lee HJ. Software: Kim JH, Yang HJ. Supervision: Lee HJ, Song YS. Validation: Song YS. Visualization: Kim JH, Yang HJ. Writing - original draft: Kim JH, Yang HJ, Lee HJ, Song YS. Writing - review & editing: Kim JH, Yang HJ.

is induced.<sup>4</sup> Ischemic injury contributes to the initiation of bladder dysfunction.<sup>6,7</sup> Hypoxia may also trigger cellular and tissue damage on the bladder wall. Detrusor hypertrophy and increased intravesical pressure are the ways in which the bladder responds to prevent urinary flow fluctuations in animal models of BOO.<sup>7-9</sup> If the stress is beyond the capacity of the compensatory responses of the bladder, it undergoes decompensatory responses. Excessive long-term distension of the bladder caused ischemia, and consequent hypoxia induces decompensatory responses of the bladder dysfunction. There is still a lack of clarity about the underlying signaling mechanisms, despite the wide range of factors that have been proposed to be involved in bladder remodeling.<sup>10</sup>

We proposed to find out whether tissue hypoxia is present and the signaling mechanisms involved in the decompensated bladder in BOO.

## METHODS

### Rat BOO model

Twenty Sprague-Dawley female rats, six weeks of age (weighing 200 g), were equally divided into two groups: group 1, sham operation (n = 10); group 2, BOO for 8 weeks (n = 10).

The rats were anesthetized with isoflurane (BK Pharm, Goyang, Korea) and the BOO intervention was initiated. The skin of the lower abdomen was incised to enable dissection of the urethra, which was surrounded with 4-0 silk sutures, including a metal rod length of 1-mm external diameter in the extraluminal position. The rod was taken out upon suture tying, followed by closure of the abdominal wall. We administered 10 mg/kg injection of Flomoxef (cephalosporin; Ildong, Seoul, Korea) intraperitoneally daily in order to prevent infection.

### Measurement of voiding function after transplantation

We evaluated the voiding response after eight weeks of BOO procedure. To place a catheter into the bladder surgically, isoflurane anesthesia was administered to the rats. A midline abdominal incision was subsequently made for exposure of the bladder. A small incision in the dome of the bladder facilitated insertion of a polyethylene 50 catheter. The distal end of this catheter (placed in the bladder) was subjected to heat to form a collar, around which a suture was placed tightly. The other catheter end went through the subcutaneous tissue and out via the skin. The muscle and skin were then sutured to close the incision to the abdomen. The rats intended for anesthesia-free examination were put in a restraining cage for 5–6 hours, permitting them to recover from the isoflurane anesthetic. A T-stopcock attached the bladder catheter to infuse physiological saline constantly as well as to be a pressure transducer. For stimulation of repetitive voiding responses, we infused physiological saline to the bladder at a fixed 0.04 mL/min rate and at ambient temperature. The rats were used to investigate the triggered micturition reflexes under urethane anesthesia. We measured the micturition-inducing intravesical pressure, pressure threshold (PT), maximal voiding pressure (MVP), and intercontraction interval (ICI) representing the duration between voids or reflex bladder contractions.

### Histology and immunohistochemistry

The next step after cystometry was anesthetizing the animals and perfusing them by means of the heart with 100 mL cold saline and 100 mL 4% paraformaldehyde in phosphate-buffered saline. This was followed by extraction of the bladder, which was fixed in 4%

paraformaldehyde and subjected to cryoprotection in 30% sucrose for three days. The bladder was segmented into 10- $\mu$ g portions in a Leica CM 1900 cryostat (Leica, Wetzlar, Germany) and stained. Immunofluorescence examination was processed for fluorescent staining, and stained sections were then examined under an Olympus laser confocal fluorescence microscope (Olympus, Tokyo, Japan). We did immunostaining for von Willebrand Factor (vWF) (1:200 dilution; Abcam, Cambridge, UK). Ten-minute heating with 9 mM sodium citrate (pH 5.0) was undertaken to retrieve the antigen for vWF. We used a peroxidase blocking reagent (Dako, Carpinteria, CA, USA) to inhibit endogenous peroxidase activity. Tissue portions were subjected to overnight incubation in a mixed primary antibody solution for vWF at 4°C, and subsequently to 60-minute incubation in a mixed secondary antibody solution of Alexa Fluor 488-conjugated anti-mouse IgG (1:200 dilution; Molecular Probe, Eugene, OR, USA) and Alexa Fluor 594-conjugated anti-rabbit IgG (1:200 dilution; Molecular Probe) at ambient temperature. The procedure for preparing the negative controls was the same, aside from the exclusion of the primary antibodies. We inspected the stained portions with an Olympus laser confocal fluorescence microscope.

### mRNA expression

When cystometric analysis was completed, the animals anesthetized with isoflurane were destroyed to enable bladder extraction. After removal of surrounding tissue, we weighed the bladders, then immediately froze and stored them in liquid nitrogen until required for biochemical and molecular biological assays.

We used Trizol<sup>®</sup> reagent (Invitrogen, Carlsbad, CA, USA) for extraction of total RNA from the cells, followed by real-time polymerase chain reaction (PCR). Measurement of the relative gene expression was based on the threshold cycle value, and the housekeeping gene  $\beta$ -actin facilitated normalization of the gene expression. The data reflected the means of three experiments. The process of quantitative PCR (qPCR) involved one 10-second cycle at 95°C, 40 five-second cycles at 95°C, and one half-minute cycle at 60°C. At the end, we did a melting curve analysis in the temperature range 60–95°C.

### Hypoxia gene real-time PCR array

We used the RNeasy Mini Kit (QIAGEN, Hilden, Germany) in keeping with the manufacturer's guidelines for the isolation and extraction of total RNA. Subsequently, DNA contamination was eliminated by using RNase-free DNase (QIAGEN) to treat the solution with the extracted RNA. The first-strand cDNA synthesis involved the use of 2  $\mu$ g total RNA and RT2 First Strand Kit (QIAGEN) and complied with the manufacturer's guidelines. A mixture of first-strand cDNA and RT2 qPCR Master Mixes was created and aliquoted into the 96-well RT2 Profiler PCR Array for rat hypoxia (QIAGEN). SYBR green-optimized primer assays were included in the 96-well plate to achieve a comprehensively investigated array of pertinent pathway-oriented genes. This encompassed 84 genes underpinning the hypoxic response and 12 genes involved in the regulation of loading and cDNA quality. The procedure of real-time PCR detection involved ten-minute heating of the plate at 95°C, 40 15-second cycles at 95°C, and one 60-second cycle at 60°C. We employed genomic DNA, reverse transcription, and positive PCR controls for quality control; the housekeeping gene  $\beta$ -actin was the basis for data normalization. Fold increase/decrease reflected gene expression alterations. Alterations of more than two-fold represented the cut-off determining expression. The genes satisfying the two criteria above were established to display upregulation or downregulation.

### Network analysis

We used network data-integration software, Cytoscape version 3.7.2 (Institute for Systems Biology, Washington, D.C., USA; Available from: <https://www.cytoscape.org>) and stringApp version 1.5.1 (Institute for Systems Biology; Available from: <https://www.cytoscape.org>) for integrating biomolecular interaction networks and states.

### Statistical analysis

Expression of data took the form of mean  $\pm$  standard error. For inter-group data comparison, we used the non-parametric Mann-Whitney *U* test for statistical analysis, with statistical significance set at  $P < 0.05$ .

### Ethics statement

After receiving approval from the Institutional Animal Care and Use Committee of Soonchunhyang University Seoul Hospital (IRB No. 2019-4), we carried out the experimental protocol, in line with the National Institute of Health Guide for the Care and Use of Laboratory Animals.

## RESULTS

### Body and bladder weight

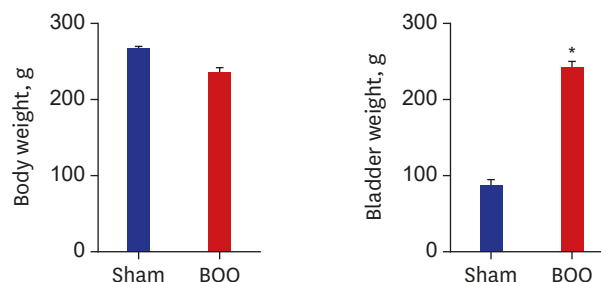
Group 1 had a mean body weight of  $266 \pm 3.3$  g, and group 2 had a mean body weight of  $235 \pm 7.1$  g; so the groups were relatively similar in body weight. Group 1 had a mean bladder weight of  $86.9 \pm 8.5$  mg, and group 2 had a mean bladder weight of  $242.2 \pm 7.9$  mg. Compared to the sham intervention group, the BOO group had a heavier bladder (Fig. 1).

### Impaired bladder contractility

ICI was  $412 \pm 17$  second and  $1,386 \pm 221$  second in groups 1 and 2. ICI increased after BOO ( $P < 0.05$ ). PT was  $9.2 \pm 1.2$  cm H<sub>2</sub>O and  $6.7 \pm 0.8$  cm H<sub>2</sub>O in groups 1 and 2. PT had no change between groups. MVP was  $33.9 \pm 4.7$  cm H<sub>2</sub>O and  $20.6 \pm 3.5$  cm H<sub>2</sub>O in groups 1 and 2. Residual urine volume (RU) was  $0.07 \pm 0.06$  mL and  $6.1 \pm 1.8$  mL in groups 1 and 2. MVP decreased and RU increased after BOO (Fig. 2).

### mRNA expression of bladder in the group of BOO

Table 1 shows the primer for real-time PCR of hypoxia. The mRNA expression of hypoxia-inducible factor (HIF)-1 $\alpha$  increased in the group of BOO ( $P < 0.05$ ). The mRNA expression



**Fig. 1.** Change of body and bladder weight after transplantation. There was no significant difference of body weight between groups. The group with BOO showed increased bladder weight than the group of sham operation group. Sham = sham operation, BOO = bladder outlet obstruction. \* $P < 0.05$ .

**Table 1.** Primer for real-time polymerase chain reaction

Gene specific primer	Forward	Reverse
HIF-1 $\alpha$	CTCCATTACCCACCGCTGAA	TCACTGGGACTATTAGGCTCAGGT
PECAM1	CTCCATCCTGTCGGGTAACG	TTCTTCGTGGAAGGGTCTGC
VEGFA	CCAGGCTGCACCCACGACAG	CGCACACCGCCATTAGGGGCA
VEGFB	TGCACCCACGACAGAAGGA	GGCAGTAGCTTCGCTGGTAGAC
VEGFC	CAGCAAGACGTTGTTGAAATTACA	GTGATTGGCAAAACTGATGTGGA
VEGFR1	CGGGCCAGACTCTTTTCTC	TCCTTCCACAGGCCGATCTA
VEGFR2	AAAGAGAGGGACTTTGGCCG	GTCGCCACTTGACAAAACCC
VEGFR3	CCCTCTCATGGTGATCGTGG	TCCGGAGACTTCTCTGCGTA
Angiopoietin1	GTGGCTGGAAAACTTGAGA	ACATCCCGTCTTGAATCCA
Angiopoietin2	ACATGAAGAAGGAGATGGTC	CGTCTGGTTTAGTACTTGGG
Tie2	GCTGGAAGAACGAAAGACATACG	GCTCTCGTGCCAGTGAAGAGA
GAPDH	AGGTCGGTGTGAACGGATTTG	TGTAGACCATGTAGTTGAGGTCA

HIF = hypoxia-inducible factor, GAPDH = glyceraldehyde 3-phosphate dehydrogenase.

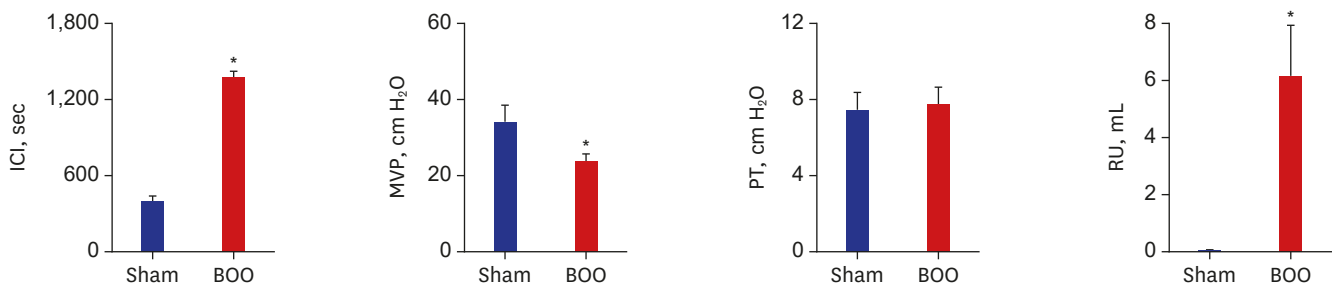
of VEGFB and receptor VEGFR1 and VEGFR2 decreased in the group of BOO ( $P < 0.05$ ). The mRNA expression of angiopoietin and Tie2 decreased in the group of BOO ( $P < 0.05$ ) (Fig. 3).

### Histopathology

Immunofluorescent staining with vWF showed decreased vWF-positive cells around blood vessel structures in the group of BOO (Fig. 4).

### Hypoxia signaling pathway PCR array

Supplementary Table 1 shows genes of the RT2 Profiler PCR Array for hypoxia. From the 84 hypoxia genes, eight genes, including Bloom syndrome (Blm; 5.2), cyclin-dependent kinase inhibitor 2A (Cdkn2a; 11.0), early growth response 1 (Erg1; 4.2), coagulation factor X (F10; 30.1), heme oxygenase 1 (Hmox1; 6.1), lysyl oxidase (Lox; 6.0), matrix metalloproteinase (Mmp) 9 (74.7), and serpin peptidase inhibitor, clade E, member 1 (Serpine1; 11.0), displayed at least two-fold upregulation, whereas three genes, namely, Hif3a (-39.6), insulin-like growth factor binding protein 3 (Igfbp3; -7.0), and Per1 (period homolog 1; -5.1), displayed at least two-fold downregulation in the BOO group by contrast to the sham intervention group. Hif3a and Per1 were among the HIG and co-transcription factors, whereas Cdkn2a was a HIF1 interactor. Erg1, Mmp9, Serpine1, Lox, and Hmox1 were involved in angiogenesis, and F10 and Serpine1 contributed to coagulation. The proliferation of cells was controlled with the involvement of Igfbp3. Heat mapping confirmed the modifications (Fig. 5).

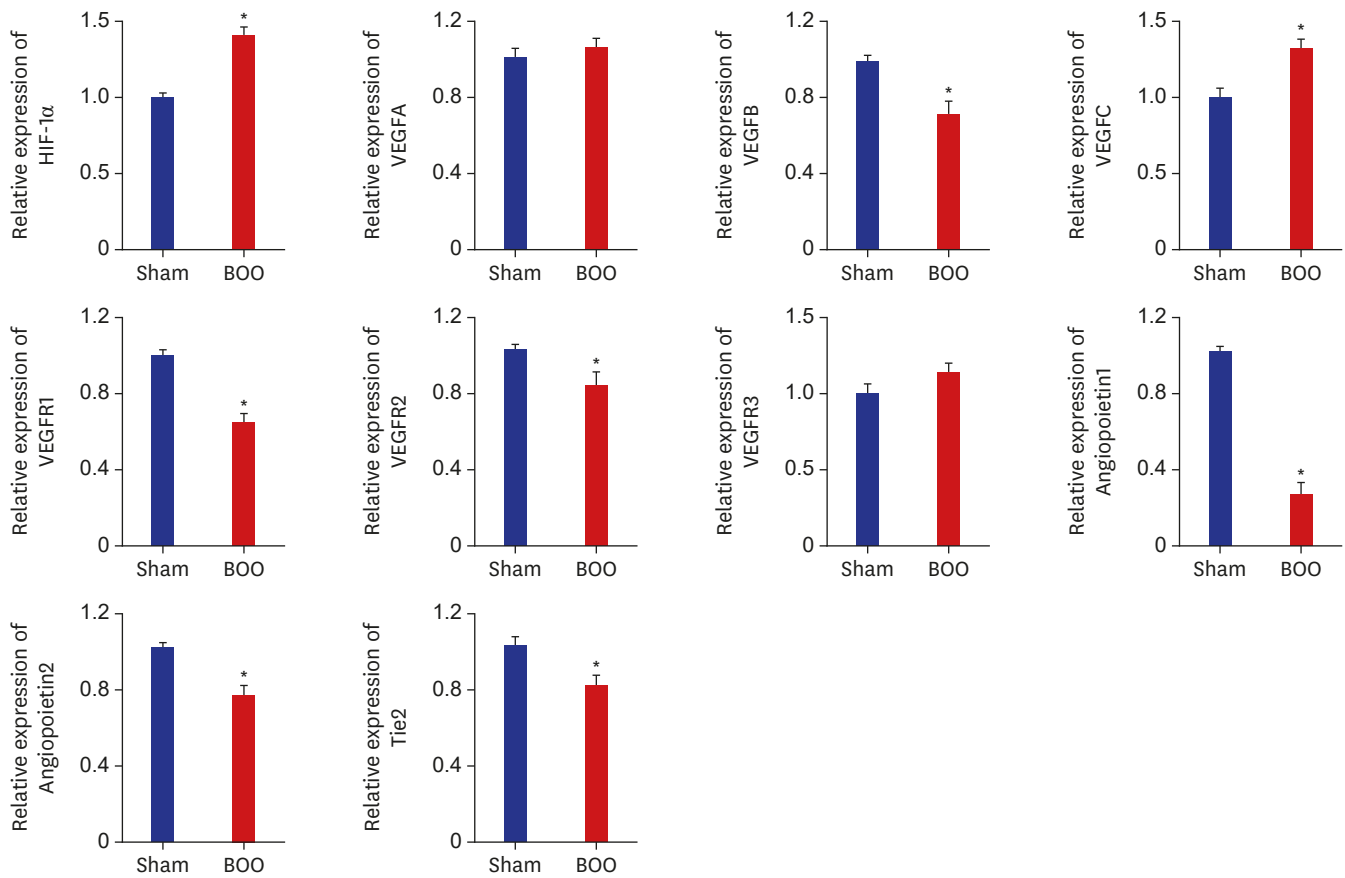


**Fig. 2.** Recovery of cystometric parameters after BOO of rats.

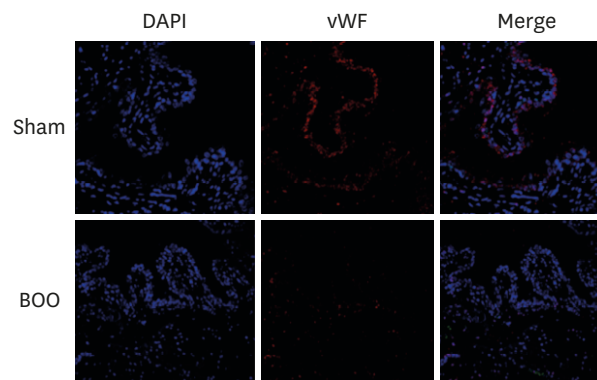
Sham = sham operation, BOO = bladder outlet obstruction, ICI = intercontraction interval, MVP = maximal voiding pressure, PT = pressure threshold, RU = residual urine volume.

\* $P < 0.05$ .

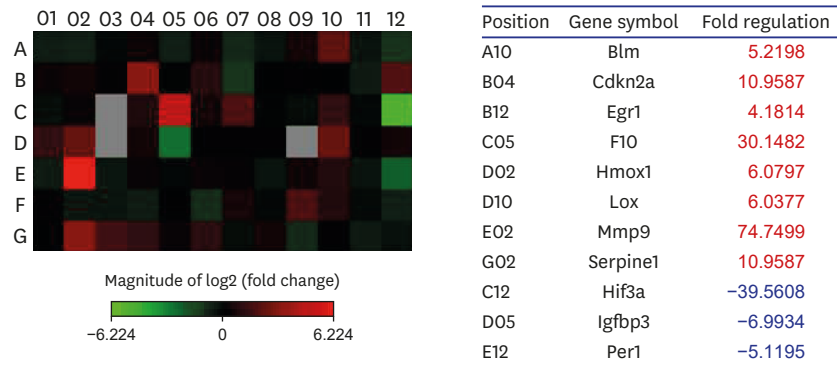
Hypoxia Gene Related to Detrusor Dysfunction



**Fig. 3.** mRNA expression of bladder in the group of BOO. mRNA expression of HIF-1α increased in the group of BOO. mRNA expression of VEGFB and receptor VEGFR1, VEGFR2 decreased in the group of BOO. mRNA expression of angiopoietin and receptor tie decreased in the group of BOO. Sham = sham operation, BOO = bladder outlet obstruction, HIF = hypoxia-inducible factor. \*P < 0.05.

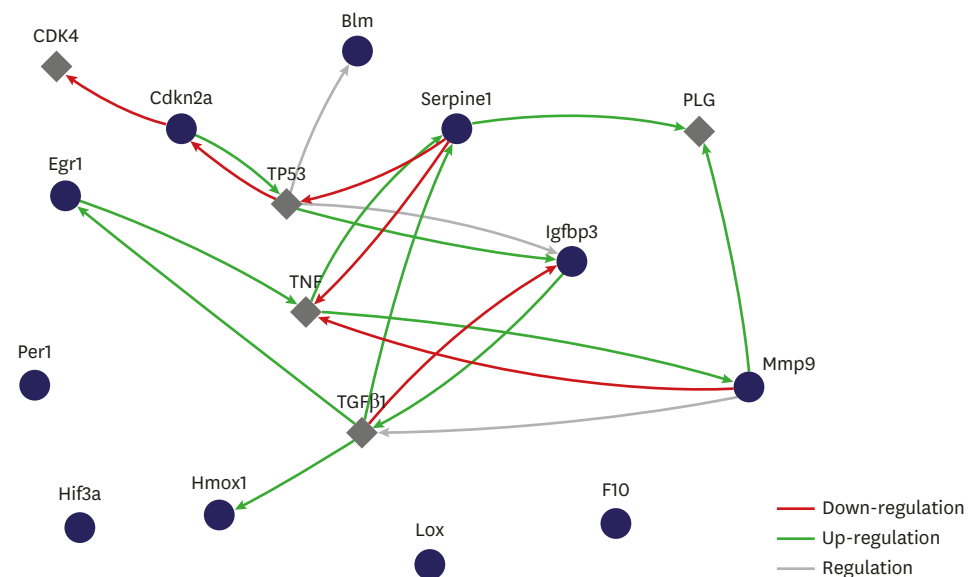


**Fig. 4.** Immunofluorescent staining of bladder tissues. Staining with vWF demonstrated decreased vWF-positive blood vessel structures in the group of BOO. Sham = sham operation, BOO = bladder outlet obstruction, DAPI = 4',6'-diamidino-2-phenylindole, vWF = von Willebrand Factor.



**Fig. 5.** Gene expression profiling of rat bladder under hypoxic conditions. An RT2 Profiler™ PCR Array was used to screen a panel of 84 genes associated with rat hypoxia in sham and BOO group. Eight genes were 2-fold up-regulated, and 3 genes were at least 2-fold down-regulated in BOO, compared with Sham group. Changes were confirmed by heat mapping.

Sham = sham operation, BOO = bladder outlet obstruction, Blm = Bloom syndrome, Cdkn2a = cyclin-dependent kinase inhibitor 2A, Egr1 = early growth response 1, F10 = coagulation factor X, Hmox1 = heme oxygenase 1, Lox = lysyl oxidase, Mmp = matrix metalloproteinase, Serpine1 = serpin peptidase inhibitor, clade E, member 1, Hif = hypoxia-inducible factor, Igfbp3 = insulin-like growth factor binding protein 3, Per1 = period homolog 1.



**Fig. 6.** Gene expression profiling of rat bladder under hypoxic conditions. The interactive network during hypoxia. Relationship between selected genes showed that genes influenced each other through TGFβ1, TNF and TP53 (cytoscape string app. regulation of expression network, interaction network).

Blm = Bloom syndrome, Cdkn2a = cyclin-dependent kinase inhibitor 2A, Egr1 = early growth response 1, F10 = coagulation factor X, Hmox1 = heme oxygenase 1, Lox = lysyl oxidase, Mmp = matrix metalloproteinase, Serpine1 = serpin peptidase inhibitor, clade E, member 1, Hif = hypoxia-inducible factor, Igfbp3 = insulin-like growth factor binding protein 3, Per1 = period homolog 1.

### Network analysis

The relationship between selected genes showed that genes influenced each other by means of TGFβ1, TNF, and TP53 (Fig. 6).

## DISCUSSION

Obstruction causes an increase in bladder-wall thickness and bladder weight that stabilizes and compensates for the demands of emptying against the increased urethral resistance (compensated function).<sup>11,12</sup> As the wall thickens, cyclical ischemia/reperfusion begins to occur with each micturition cycle.<sup>4,13</sup> The bladder detrusor and subserosal areas exhibited focal hypoxia,<sup>14</sup> leading to reduced contractile function and selective metabolic dysfunction of smooth muscles. In this study, we found increased bladder thickness (Fig. 1) and decreased bladder contractility in the decompensated bladder (Fig. 2).

An obstructed bladder is associated with diminished blood flow in the bladder wall and decreased oxygen tension when the bladder contracts, but bladder emptying reverses these effects.<sup>13,15</sup> If the duration of bladder obstruction is short, the bladder is compensated. However, if the duration of bladder obstruction is long, hypoxia induced by BOO is a major cause of the progressive dysfunction observed during decompensation.

There was a direct correlation between the BOO-related reduction in detrusor blood flow and the degree of decompensation.<sup>15</sup> Cyclical detrusor ischemia/reperfusion results in the generation of reactive free radicals and the activation of specific phospholipases and proteases that mediate the observed cellular and subcellular membrane damage<sup>16</sup> that is the etiology for the progressive bladder decompensation. In this study, we found increased mRNA expression of HIF-1 $\alpha$ , decreased mRNA expression of VEGF and receptor VEGFR, and decreased mRNA expression of angiopoietin and receptor tie (Fig. 3). These results demonstrated hypoxic injury in our BOO model.

Earlier studies confirmed that hypoxia and HIF-1 $\alpha$  were closely correlated.<sup>17-19</sup> This justifies the use of the HIF-1 $\alpha$  protein as a reliable indicator of hypoxia. In mammals, the activity of the transcription factor, HIF, underpins the mechanism of the cellular hypoxia response. This oxygen-dependent factor is usually active solely under conditions of cellular hypoxia.<sup>20,21</sup> It is responsible for the activation of genes participating in glucose transport and metabolism, as well as the upregulation of genes contributing to the survival of cells.<sup>22</sup> The HIF is the main activator of the hypoxia signaling pathway when oxygen levels are low. Among the biological processes underpinned by hypoxia-inducible target genes are angiogenesis, hematopoiesis, and vascular tone maintenance to ensure blood and oxygen are delivered to tissues.

In this study, the group with BOO showed decreased blood vessel structures more than did the groups of sham operation and controls with immunofluorescent staining of vWF (Fig. 4). Compared with the sham group, blood vessel density was clearly decreased in the BOO group.

To achieve a comprehensively investigated array of pertinent pathway-oriented genes, we included SYBR green-optimized primer assays in the 96-well plate RT2 Profiler PCR Array for rat hypoxia (QIAGEN). As indicated in **Supplementary Table 1**, the array encompassed 84 genes underpinning the hypoxic response, cell differentiation, and metabolism, and 12 genes involved in the regulation of loading and cDNA quality. We found that, from the 84 hypoxia genes, eight genes exhibited at least two-fold upregulation, and three genes exhibited at least two-fold downregulation in the BOO group compared with the sham group (Fig. 5). Hif3a demonstrated 39.6-fold down-regulation and means positive regulation of hypoxia-inducible gene expression. Per1, which is a HIF and co-transcription factor, demonstrated a 5.1-fold down-regulation. Cdkn2a, which is another HIF1 interactor, demonstrated an 11.0-fold up-regulation.



Erg1, Serpine1, and Hmox1, which are angiogenesis, demonstrated 4.2-, 11.0-, and 6.1-fold up-regulation, respectively. Igfbp3, which regulates cell proliferation, demonstrated a 7.0-fold down-regulation. F10 and Serpine1, which are involved in coagulation, demonstrated a 30.1- and 11.0-fold up-regulation and means positive regulation of hematopoiesis gene expression. The gene expression profiles could explain the molecular mechanisms of the increased HIF-1 pathway in a decompensated obstructed bladder. Depositing of the extracellular matrix and smooth-muscle dysfunction are among the many pathological events associated with hypoxia.<sup>23</sup>

The extracellular enzyme Lox not only mediates the covalent cross-linking of fibers of collagen type I and III, but also contributes to making extracellular collagen more stable and rigid.<sup>24</sup> In this study, Lox demonstrated a 6.0-fold up-regulation. Protease of the MMP family is involved in the breakdown of ECM in angiogenesis and wound healing.<sup>25</sup> In this study, Mmp9 demonstrated a 74.7-fold up-regulation and means positive regulation of angiogenesis.

Blm (RecQ helicase-like) acts to suppress inappropriate recombination.<sup>26</sup> In this study, Blm demonstrated a 5.2-fold up-regulation.

The purpose of a gene-regulatory network is to define inter-gene biological interplay and afford insight into processes of cellular signaling and regulation. It also demonstrates the formation of a functional module via gene interaction and the correlation between distinct gene modules. The gene-regulatory network provides an estimate of a scale-free network topology with a couple of hub genes with close links and many nodes without close links.<sup>27</sup> Playing the part of master regulators within a gene network, the hub genes are typically highly important in biological systems. The gene-regulatory network is worth researching, because it could help to distinguish clinical uses by mediating the methodical functional annotation of genes<sup>28</sup> as well as by detecting hub genes.<sup>29</sup> In the present study, the relationship between selected genes showed that genes influenced each other by means of TGF $\beta$ 1, TNF, and TP53. We have contributed to identifying possible extra BOO-impaired hypoxia genes and pathways with potential adverse implications for bladder function.

It is clear that expression analysis based on a PCR array has notable advantages. However, the application of this approach here has some weak points. For instance, the extracted bladder samples contained various different types of cells, despite the fact that smooth-muscle cells are dominant in bladder tissues. Consequently, the results obtained regarding differential gene expression could be distorted. Furthermore, although the noted gene alterations and bladder dysfunction from BOO were found to be correlated, additional empirical research must be conducted to gain a better insight into which genes with differential expression promote impaired bladder function but are unrelated to BOO. Since many PCR array studies are afflicted by this difficulty, this work has been more of an endeavor to formulate new hypotheses.

Also, the RT2 Profiler PCR Array for rat hypoxia (QIAGEN) includes probe sets for more than 84 genes and transcripts, including common rat hypoxia genes, but not for every one of them. Hence, only a partial analysis could be conducted in this work. Moreover, important modifications emerging at earlier or later points in the progression of bladder dysfunction from BOO may be overlooked by focusing on just one time point in gene expression analysis. Identification of genes with direct involvement in bladder dysfunction from BOO may be aided by an all-inclusive examination of temporal transformations on the basis of expression patterns over time.

In conclusions, hypoxia genes were increased in impaired contractility because of protracted BOO. An elucidation of hypoxia-related molecular mechanisms in impaired contractility because of long-term BOO was provided by the profiles of gene expression.

## SUPPLEMENTARY MATERIAL

### Supplementary Table 1

Genes of RT2 Profiler PCR Array for hypoxia

[Click here to view](#)

## REFERENCES

- Mehrotra RM. An experimental study of the vesical circulation during distension and in cystitis. *J Pathol Bacteriol* 1953;66(1):79-89.  
[PUBMED](#) | [CROSSREF](#)
- Hossler FE, Kao RL. Microvasculature of the urinary bladder of the dog: a study using vascular corrosion casting. *Microsc Microanal* 2007;13(3):220-7.  
[PUBMED](#) | [CROSSREF](#)
- Miodoński AJ, Litwin JA. Microvascular architecture of the human urinary bladder wall: a corrosion casting study. *Anat Rec* 1999;254(3):375-81.  
[PUBMED](#) | [CROSSREF](#)
- Greenland JE, Brading AF. The effect of bladder outflow obstruction on detrusor blood flow changes during the voiding cycle in conscious pigs. *J Urol* 2001;165(1):245-8.  
[PUBMED](#) | [CROSSREF](#)
- Azadzi KM, Pontari M, Vlachiatis J, Siroky MB. Canine bladder blood flow and oxygenation: changes induced by filling, contraction and outlet obstruction. *J Urol* 1996;155(4):1459-65.  
[PUBMED](#) | [CROSSREF](#)
- Koritsiadis G, Stravodimos K, Koutalellis G, Agrogiannis G, Koritsiadis S, Lazaris A, et al. Immunohistochemical estimation of hypoxia in human obstructed bladder and correlation with clinical variables. *BJU Int* 2008;102(3):328-32.  
[PUBMED](#) | [CROSSREF](#)
- Saito M, Longhurst PA, Tammela TL, Wein AJ, Levin RM. Effects of partial outlet obstruction of the rat urinary bladder on micturition characteristics, DNA synthesis and the contractile response to field stimulation and pharmacological agents. *J Urol* 1993;150(3):1045-51.  
[PUBMED](#) | [CROSSREF](#)
- Brent L, Stephens FD. The response of smooth muscle cells in the rabbit urinary bladder to outflow obstruction. *Invest Urol* 1975;12(6):494-502.  
[PUBMED](#)
- Mostwin JL, Karim OM, van Koevering G, Brooks EL. The guinea pig as a model of gradual urethral obstruction. *J Urol* 1991;145(4):854-8.  
[PUBMED](#) | [CROSSREF](#)
- Brading A, Pessina F, Esposito L, Symes S. Effects of metabolic stress and ischaemia on the bladder, and the relationship with bladder overactivity. *Scand J Urol Nephrol Suppl* 2004;38(215):84-92.  
[PUBMED](#) | [CROSSREF](#)
- Kato K, Monson FC, Longhurst PA, Wein AJ, Haugaard N, Levin RM. The functional effects of long-term outlet obstruction on the rabbit urinary bladder. *J Urol* 1990;143(3):600-6.  
[PUBMED](#) | [CROSSREF](#)
- Levin RM, Longhurst PA, Barasha B, McGuire EJ, Elbadawi A, Wein AJ. Studies on experimental bladder outlet obstruction in the cat: long-term functional effects. *J Urol* 1992;148(3):939-43.  
[PUBMED](#) | [CROSSREF](#)
- Greenland JE, Hvistendahl JJ, Andersen H, Jörgensen TM, McMurray G, Cortina-Borja M, et al. The effect of bladder outlet obstruction on tissue oxygen tension and blood flow in the pig bladder. *BJU Int* 2000;85(9):1109-14.  
[PUBMED](#) | [CROSSREF](#)

14. Levin RM, Yu HJ, Kim KB, Longhurst PA, Wein AJ, Damaser MS. Etiology of bladder dysfunction secondary to partial outlet obstruction. Calcium dysregulation in bladder power generation and the ability to perform work. *Scand J Urol Nephrol Suppl* 1997;184:43-50.  
[PUBMED](#)
15. Schröder A, Chichester P, Kogan BA, Longhurst PA, Lieb J, Das AK, et al. Effect of chronic bladder outlet obstruction on blood flow of the rabbit bladder. *J Urol* 2001;165(2):640-6.  
[PUBMED](#) | [CROSSREF](#)
16. Gosling JA, Kung LS, Dixon JS, Horan P, Whitbeck C, Levin RM. Correlation between the structure and function of the rabbit urinary bladder following partial outlet obstruction. *J Urol* 2000;163(4):1349-56.  
[PUBMED](#) | [CROSSREF](#)
17. Hoskin PJ, Sibtain A, Daley FM, Wilson GD. GLUT1 and CAIX as intrinsic markers of hypoxia in bladder cancer: relationship with vascularity and proliferation as predictors of outcome of ARCON. *Br J Cancer* 2003;89(7):1290-7.  
[PUBMED](#) | [CROSSREF](#)
18. Lee JW, Bae SH, Jeong JW, Kim SH, Kim KW. Hypoxia-inducible factor (HIF-1) $\alpha$ : its protein stability and biological functions. *Exp Mol Med* 2004;36(1):1-12.  
[PUBMED](#) | [CROSSREF](#)
19. Hoppeler H, Vogt M. Muscle tissue adaptations to hypoxia. *J Exp Biol* 2001;204(Pt 18):3133-9.  
[PUBMED](#) | [CROSSREF](#)
20. Semenza GL. HIF-1 and mechanisms of hypoxia sensing. *Curr Opin Cell Biol* 2001;13(2):167-71.  
[PUBMED](#) | [CROSSREF](#)
21. Huang LE, Gu J, Schau M, Bunn HF. Regulation of hypoxia-inducible factor 1 $\alpha$  is mediated by an O<sub>2</sub>-dependent degradation domain via the ubiquitin-proteasome pathway. *Proc Natl Acad Sci U S A* 1998;95(14):7987-92.  
[PUBMED](#) | [CROSSREF](#)
22. Liu P, Hock CE, Nagele R, Wong PY. Formation of nitric oxide, superoxide, and peroxynitrite in myocardial ischemia-reperfusion injury in rats. *Am J Physiol* 1997;272(5 Pt 2):H2327-36.  
[PUBMED](#) | [CROSSREF](#)
23. Higgins DF, Kimura K, Bernhardt WM, Shrimanker N, Akai Y, Hohenstein B, et al. Hypoxia promotes fibrogenesis in vivo via HIF-1 stimulation of epithelial-to-mesenchymal transition. *J Clin Invest* 2007;117(12):3810-20.  
[PUBMED](#) | [CROSSREF](#)
24. Aitken KJ, Bägli DJ. The bladder extracellular matrix. Part I: architecture, development and disease. *Nat Rev Urol* 2009;6(11):596-611.  
[PUBMED](#) | [CROSSREF](#)
25. Page-McCaw A, Ewald AJ, Werb Z. Matrix metalloproteinases and the regulation of tissue remodelling. *Nat Rev Mol Cell Biol* 2007;8(3):221-33.  
[PUBMED](#) | [CROSSREF](#)
26. Karow JK, Chakraverty RK, Hickson ID. The Bloom's syndrome gene product is a 3'-5' DNA helicase. *J Biol Chem* 1997;272(49):30611-4.  
[PUBMED](#) | [CROSSREF](#)
27. Barabási AL, Oltvai ZN. Network biology: understanding the cell's functional organization. *Nat Rev Genet* 2004;5(2):101-13.  
[PUBMED](#) | [CROSSREF](#)
28. Segal E, Shapira M, Regev A, Pe'er D, Botstein D, Koller D, et al. Module networks: identifying regulatory modules and their condition-specific regulators from gene expression data. *Nat Genet* 2003;34(2):166-76.  
[PUBMED](#) | [CROSSREF](#)
29. Tang H, Xiao G, Behrens C, Schiller J, Allen J, Chow CW, et al. A 12-gene set predicts survival benefits from adjuvant chemotherapy in non-small cell lung cancer patients. *Clin Cancer Res* 2013;19(6):1577-86.  
[PUBMED](#) | [CROSSREF](#)