

## REVIEW ARTICLE

# A multidisciplinary approach and consensus statement to establish standards of care for Angelman syndrome

Jessica Duis<sup>1</sup>  | Mark Nespeca<sup>2</sup> | Jane Summers<sup>3</sup> | Lynne Bird<sup>4</sup> | Karen G.C.B. Bindels-de Heus<sup>5,6</sup> | M. J. Valstar<sup>5</sup> | Marie-Claire Y. de Wit<sup>5,7</sup> | C. Navis<sup>5,8</sup> | Maartje ten Hooven-Radstaake<sup>5,6</sup> | Bianca M. van Iperen-Kolk<sup>6,9</sup> | Susan Ernst<sup>10</sup> | Melina Dendrinis<sup>10</sup> | Terry Katz<sup>11</sup> | Gloria Diaz-Medina<sup>12,13</sup> | Akshat Katyayan<sup>12,13</sup> | Srishti Nangia<sup>14</sup> | Ronald Thibert<sup>15</sup> | Daniel Glaze<sup>12,13</sup> | Christopher Keary<sup>15</sup> | Karine Pelc<sup>16</sup> | Nicole Simon<sup>17</sup> | Anjali Sadhwani<sup>17</sup> | Helen Heussler<sup>18</sup> | Anne Wheeler<sup>19</sup> | Caroline Woeber<sup>20</sup> | Margaret DeRamus<sup>21</sup> | Amy Thomas<sup>22</sup> | Emily Kertcher<sup>23</sup> | Lauren DeValk<sup>24</sup> | Kristen Kalemeris<sup>25</sup> | Kara Arps<sup>26</sup> | Carol Baym<sup>27</sup> | Nicole Harris<sup>27</sup> | John P. Gorham<sup>28</sup> | Brenda L. Bohnsack<sup>29</sup> | Reid C. Chambers<sup>30</sup> | Sarah Harris<sup>12,13</sup> | Henry G. Chambers<sup>31</sup> | Katherine Okoniewski<sup>19</sup> | Elizabeth R. Jalazo<sup>32</sup> | Allyson Berent<sup>33</sup> | Carlos A. Bacino<sup>34</sup> | Charles Williams<sup>35</sup> | Anne Anderson<sup>12,13</sup>

<sup>1</sup>Section of Genetics & Inherited Metabolic Disease, Section of Pediatrics, Special Care, Department of Pediatrics, Children's Hospital Colorado, University of Colorado Anschutz Medical Campus, Aurora, Colorado, USA

<sup>2</sup>Department of Neurology, Rady Children's Hospital, San Diego, California, USA

<sup>3</sup>Department of Psychiatry, The Hospital for Sick Children, Toronto, Ontario, Canada

<sup>4</sup>Department of Pediatrics, Clinical Genetics / Dysmorphology, University of California, San Diego, Rady Children's Hospital San Diego, San Diego, California, USA

<sup>5</sup>Department of Pediatrics, Erasmus MC Sophia, Children's Hospital, Rotterdam, Netherlands

<sup>6</sup>ENCORE Expertise Center for Neurodevelopmental Disorders, Erasmus MC University Medical Center, Rotterdam, The Netherlands

<sup>7</sup>Department of Neurology and Pediatric Neurology, Erasmus MC, Rotterdam, The Netherlands

<sup>8</sup>Department of ENT (Speech & Language Pathology), Erasmus MC, Rotterdam, The Netherlands

<sup>9</sup>Department of Physical Therapy, Erasmus MC, Rotterdam, The Netherlands

<sup>10</sup>Department of Obstetrics and Gynecology, University of Michigan, Ann Arbor, Michigan, USA

<sup>11</sup>Developmental Pediatrics, Department of Pediatrics, Children's Hospital Colorado, University of Colorado Anschutz Medical Campus, Aurora, CO, USA

<sup>12</sup>Division of Neurology and Developmental Pediatrics, Department of Pediatrics, Baylor College of Medicine, Houston, Texas, USA

<sup>13</sup>Neurology, Texas Children's Hospital, Houston, Texas, USA

<sup>14</sup>Department of Pediatrics, Division of Child Neurology, Weill Cornell Medicine, New York-Presbyterian Hospital, New York, New York, USA

<sup>15</sup>Angelman Syndrome Program, Lurie Center for Autism, Massachusetts General Hospital for Children, Boston, Massachusetts, USA

<sup>16</sup>Department of Neurology, Hôpital Universitaire des Enfants Reine Fabiola, Université Libre de Bruxelles (ULB), Brussels, Belgium

<sup>17</sup>Department of Psychiatry, Boston Children's Hospital, Boston, MA, USA

<sup>18</sup>UQ Child Health Research Centre, Faculty of Medicine, The University of Queensland, Brisbane, Queensland, Australia

<sup>19</sup>Center for Newborn Screening, RTI International, Research Triangle Park, North Carolina, USA

[Correction added on March 11, 2022 after first online publication. The acknowledgment section has been modified.]

This is an open access article under the terms of the Creative Commons Attribution License, which permits use, distribution and reproduction in any medium, provided the original work is properly cited.

© 2021 The Authors. *Molecular Genetics & Genomic Medicine* published by Wiley Periodicals LLC.

<sup>20</sup>Audiology, Speech & Learning Services, Children's Hospital Colorado, Aurora, Colorado, USA

<sup>21</sup>Department of Psychiatry, Carolina Institute for Developmental Disabilities, University of North Carolina at Chapel Hill, Chapel Hill, North Carolina, USA

<sup>22</sup>New York League for Early Learning William O'Connor School, New York, New York, USA

<sup>23</sup>UNC Hospital Chapel Hill, Chapel Hill, North Carolina, USA

<sup>24</sup>Occupational Therapy, Children's Hospital Colorado, Aurora, Colorado, USA

<sup>25</sup>Department of Pediatric Rehabilitation, Monroe Carell Jr. Children's Hospital at Vanderbilt, Nashville, Tennessee, USA

<sup>26</sup>Department of Physical Therapy, Children's Hospital Colorado, University of Colorado Anschutz Medical Campus, Aurora, Colorado, USA

<sup>27</sup>Physical Therapy, Children's Hospital Colorado, Aurora, Colorado, USA

<sup>28</sup>Department of Ophthalmology and Visual Sciences, University of Michigan, Ann Arbo, Michigan, USA

<sup>29</sup>Division of Ophthalmology, Department of Ophthalmology, Ann & Robert H. Lurie Children's Hospital of Chicago, Northwestern University Feinberg School of Medicine, Ann Arbo, Michigan, USA

<sup>30</sup>Department of Orthopedic Surgery Nationwide Children's Hospital, Columbus, Ohio, USA

<sup>31</sup>Orthopedic Surgery, San Diego Department of Pediatric Orthopedics, University of California, Rady Children's Hospital, San Diego, California, USA

<sup>32</sup>Angelman Syndrome Foundation, Aurora, Illinois, USA

<sup>33</sup>Foundation for Angelman Syndrome Therapeutics, Chicago, Illinois, USA

<sup>34</sup>Department of Molecular and Human Genetics, Baylor College of Medicine, Houston, Texas, USA

<sup>35</sup>Raymond C. Philips Unit, Division of Genetics and Metabolism, Department of Pediatrics, University of Florida, Gainesville, Florida, USA

### Correspondence

Jessica Duis, Section of Genetics & Inherited Metabolic Disease, Section of Pediatrics Special Care Clinic, Children's Hospital Colorado, University of Colorado, Anschutz Medical Campus, 13123 E 16<sup>th</sup> Ave, ED2S Room 4120, Aurora, CO 80045, USA.  
Email: [jessica.duis@childrenscolorado.org](mailto:jessica.duis@childrenscolorado.org)

### Funding information

Million Dollar Bike Ride

### Abstract

**Background:** Angelman syndrome (AS) is a rare neurogenetic disorder present in approximately 1/12,000 individuals and characterized by developmental delay, cognitive impairment, motor dysfunction, seizures, gastrointestinal concerns, and abnormal electroencephalographic background. AS is caused by absent expression of the paternally imprinted gene *UBE3A* in the central nervous system. Disparities in the management of AS are a major problem in preparing for precision therapies and occur even in patients with access to experts and recognized clinics. AS patients receive care based on collective provider experience due to limited evidence-based literature. We present a consensus statement and comprehensive literature review that proposes a standard of care practices for the management of AS at a critical time when therapeutics to alter the natural history of the disease are on the horizon.

**Methods:** We compiled the key recognized clinical features of AS based on consensus from a team of specialists managing patients with AS. Working groups were established to address each focus area with committees comprised of providers who manage >5 individuals. Committees developed management guidelines for their area of expertise. These were compiled into a final document to provide a framework for standardizing management. Evidence from the medical literature was also comprehensively reviewed.

**Results:** Areas covered by working groups in the consensus document include genetics, developmental medicine, psychology, general health concerns, neurology (including movement disorders), sleep, psychiatry, orthopedics, ophthalmology, communication, early intervention and therapies, and caregiver health. Working groups created frameworks, including flowcharts and tables, to help with quick access for providers. Data from the literature were incorporated to ensure providers had review of experiential versus evidence-based care guidelines.

**Conclusion:** Standards of care in the management of AS are keys to ensure optimal care at a critical time when new disease-modifying therapies are emerging. This document is a framework for providers of all familiarity levels.

**KEYWORDS**

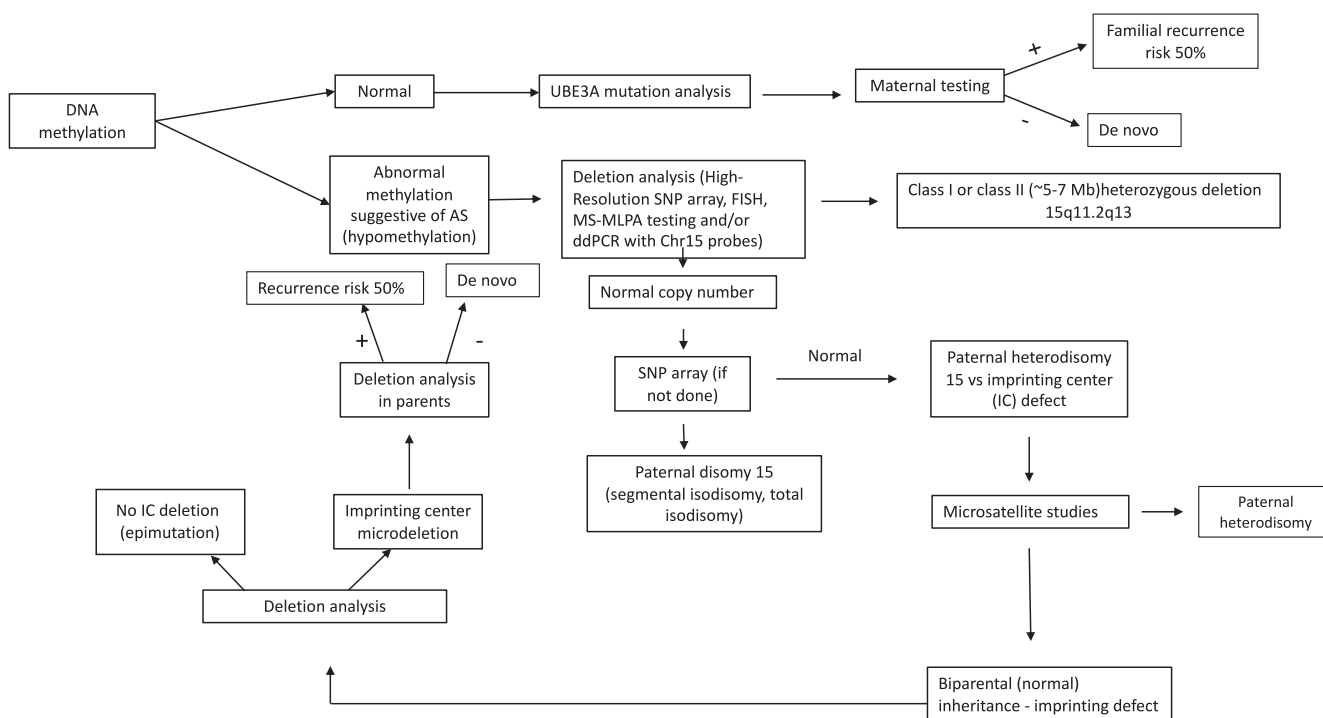
Angelman Syndrome, genetics, management, neurogenetics, UBE3A

## 1 | INTRODUCTION

Angelman syndrome (AS, MIM# 105830) is a neurogenetic disorder impacting approximately 1/12,000 to 1/20,000 (Steffenburg et al., 1996). Diagnosis of classic AS is often made between 1 and 2 years of age, often later with non-classical presentation (Gentile et al., 2010). Characteristic features include developmental delays especially in expressive language, a distinctive happy demeanor, seizures, gross and fine motor deficits, tremors, sleep disturbances, gastrointestinal problems, stereotypical behavior, anxiety, and hyperkinesia.

The ubiquitin protein E3A ligase gene (*UBE3A*) is paternally imprinted in neurons, and the clinical features of AS are primarily due to deficient maternally expressed *UBE3A* protein in the brain. *UBE3A* is located on chromosome 15q11.2q13 and encodes three EA6P protein isoforms via differential splicing (Copping et al., 2017;

Dindot et al., 2008; Hillman et al., 2017; Yamamoto et al., 1997). There are four recognized molecular mechanisms: (a) deletion of maternal 15q11.2q13 (70–75%); (b) mutation of maternal *UBE3A* gene (15%) with a 50% recurrence risk if maternally inherited; rarely (c) paternal uniparental disomy (UPD, 5–7%); and (d) imprinting defect (ImpD, 5–7%) due to an epimutation conferring an aberrant paternal imprint onto the maternal *UBE3A*, or less commonly due to deletion of the imprinting center with a 50% risk of recurrence if maternally inherited. Mosaicism is primarily associated with an epimutation (Aypar et al., 2016; Camprubi et al., 2007; Carson et al., 2019; Fairbrother et al., 2015). Features vary depending upon molecular subtype (Bindels-de Heus et al., 2020; Larson et al., 2015; Sahoo et al., 2007; Tan et al., 2011). Figure 1 presents a diagnostic algorithm. Genetic counseling should be offered to all families to discuss recurrence risk, which differs based on molecular subtype.



**FIGURE 1** Angelman Syndrome (AS) Genetic Testing Algorithm. Guidance to work up when considering a diagnosis of AS.

Abbreviations: FISH Fluorescence in situ hybridization; SNP single nucleotide polymorphism; MS methylation-specific; MLPA multiplex ligation-dependent probe amplification; PWS Prader-Willi Syndrome; AS Angelman syndrome; UPD uniparental disomy; *UBE3A* ubiquitin protein ligase E3A gene.

This recommendation aims to highlight standardization of care in preparation for personalized therapies. The Food and Drug Administration recommends establishing an accessible document with an expert statement regarding treatment.

## 2 | METHODS

The consensus of care across the lifespan reflects the compilation of input from more than 20 key opinion leaders (KOLs) in the field. The document was circulated to experts across the globe for feedback and revision. All co-authors met at least one of the following criteria: (a) substantial clinical experience working with children and adults with AS (operationalized as having seen at least 5 individuals in both consultation and follow-up) and (b) willingness to practice evidence-based medicine with comprehensive review of the literature.

Literature review was performed in PubMed and Ovid Medline. PubMed search terms included (Angelman Syndrome) AND (Management OR treatment OR clinical trial OR medication OR behavioral OR intervention), yielding 1,273 articles. The Ovid search terms included Angelman Syndrome/dg, dh, dt, pc, th [Diagnostic Imaging, Diet Therapy, Drug Therapy, Prevention & Control, Therapy] AND (Management OR treatment OR clinical trial OR medication OR behavioral OR intervention).mp. [mp=title, abstract, original title, name of substance word, subject heading word, floating sub-heading word, keyword heading word, organism supplementary concept word, protocol supplementary concept word, rare disease supplementary concept word, unique identifier, synonyms] and yielded 59 results. Articles included were clinical trials, retrospective case reviews, meeting abstracts, and case series focused on the management of AS. The final review included removal of duplicates and sorting for relevance to human management and yielded 100 articles.

## 3 | REVIEW AND PRACTICE GUIDELINES

Through data gathered in natural history studies and clinical experience, the clinical description continues to evolve to include newly recognized features. Due to the limited nature of relevant references and a lack of evidence base, KOL experience was prioritized over the literature review, but both were considered. A limited number of clinical trials to support practices were available, and therefore, the evidence level is III (controlled trials without randomization) or IV (designed case-control or cohort studies).

## 3.1 | General considerations

Table 1 shows comprehensive management by age.

### 3.1.1 | Feeding

AS may present with hypotonia and failure to thrive (FTT) in infancy, but conservative treatment is usually sufficient. Sucking, chewing, and swallowing can be abnormal, including failure to breastfeed due to inadequate latching. Tongue protrusion and dyspraxia of swallowing and breathing during feeding contribute to FTT, and silent aspiration may occur. Early involvement of a feeding therapist is recommended. A feeding tube should be approached cautiously but considered when there is a history of aspiration pneumonia (Bindels-de Heus et al., 2020; Glassman et al., 2017). Feeding tubes are required more commonly in individuals with a deletion. Choking remains a risk throughout life due to the combination of not chewing properly and stuffing the mouth.

### 3.1.2 | Growth

Height is usually normal (Bindels-de Heus et al., 2020; Mertz et al., 2013; Tan et al., 2011). Disproportionately slow head growth may lead to microcephaly ( $\leq -2$  SDS) by age 2 years, particularly in those with deletion subtype. Absence of microcephaly is insufficient for rejection of a clinical suspicion of AS, especially in the non-deletion subtypes (Williams et al., 2006).

### 3.1.3 | Hormones and puberty

The timing of puberty and menarche is normal. Regularity, duration, and severity of menses in females are typical (Kaskowitz et al., 2016). Hormonal alterations of puberty can affect epilepsy, anxiety, and behavior. Regulation of menses may be beneficial due to hygiene and impaired comprehension. Oral contraceptives and intramuscular progestogens are options, the latter with consideration of possible negative effect on bone health. Subdermal and intrauterine hormonal devices require anesthesia for initiation but are long-acting, effective options. Discussing options with a gynecologist and/or endocrinologist is advised. Requests for permanent sterilization require formal consultation with experts in reproductive ethics as this is often not recommended (Albanese & Hopper, 2007; Kaskowitz et al., 2016). In adult males, public masturbation can be problematic and behavioral modifications are typically

TABLE 1 Health considerations by age for individuals with Angelman syndrome

Age	Medical eval	Anticipatory guidance	Medical referrals	Labs	Diagnostic	Medication/supplement considerations
Age of diagnosis	<ul style="list-style-type: none"> <li>• Feeding</li> <li>• Vision               <ul style="list-style-type: none"> <li>- CVI</li> <li>- strabismus</li> </ul> </li> <li>• GERD</li> <li>• Growth &amp; Development</li> <li>• Tone</li> <li>• Seizures</li> </ul>	<ul style="list-style-type: none"> <li>• Genetic counseling</li> <li>• Hold upright during feeding and for 30 minutes after feeding (GERD precautions)</li> <li>• Discuss low-carbohydrate, higher protein and fat foods towards implementation of LGIT diet</li> <li>• Early intervention services</li> <li>• Assess sleep</li> <li>• Seizures precautions/management</li> <li>• Monitor constipation</li> <li>• Sufficient environmental stimulation</li> <li>• Support groups</li> <li>• Clinical research<sup>a</sup></li> </ul>	<ul style="list-style-type: none"> <li>• Genetics/Genetic Counseling</li> <li>• Neurology</li> <li>• Ophthalmology</li> <li>• GI/Nutrition</li> <li>• OT</li> <li>- Address sensory needs</li> <li>• PT</li> <li>- Orthotics</li> <li>- Aqua therapy</li> <li>• SLP</li> <li>- AAC</li> </ul>	<ul style="list-style-type: none"> <li>• Genetic confirmation (See Figure 1)</li> <li>• If failure to thrive is present:               <ul style="list-style-type: none"> <li>• CMP, CBC, thyroid studies, vitamin D, magnesium, phosphorus</li> <li>• Assess patient produces ketones as expected if initiating diet: acylcarnitine profile, urine organic acids, free and total carnitine</li> <li>• Additional labs before initiating/monitoring diet: selenium, zinc, ionized calcium, BHB, lipid panel, carnitine, urine calcium</li> <li>• Ferritin with ESR</li> </ul> </li> </ul>	<ul style="list-style-type: none"> <li>• Hip x-ray (especially if not ambulatory)</li> <li>• Spine x-ray</li> <li>• EEG, especially if suspect seizures</li> <li>• Feeding evaluation               <ul style="list-style-type: none"> <li>- VFSS if needed</li> </ul> </li> </ul>	<ul style="list-style-type: none"> <li>• Diet: LGIT or ketogenic diet</li> <li>• Seizure management (see Figure 2)</li> <li>• MCT oil to support diet/constipation</li> <li>• Levocarnitine if level borderline or low in patient on low carbohydrate diet</li> </ul>
1–3 years old	<ul style="list-style-type: none"> <li>• Growth &amp; development</li> <li>• Vision               <ul style="list-style-type: none"> <li>- CVI</li> <li>- strabismus</li> </ul> </li> <li>• Feeding</li> <li>• Seizures</li> <li>• Sleep</li> <li>• Behavior</li> </ul>	<ul style="list-style-type: none"> <li>• Early intervention services</li> <li>• LGIT/ketogenic diets</li> <li>• Routines               <ul style="list-style-type: none"> <li>- Bedtime</li> <li>- Toileting (see Figure S1)</li> <li>- Daily activities</li> <li>- Behavioral modification</li> </ul> </li> <li>• Limit-setting</li> <li>• Seizures</li> <li>• Support groups</li> <li>• Clinical research<sup>a</sup></li> </ul>	<ul style="list-style-type: none"> <li>• Neurology</li> <li>• Medical Home/AS specialist</li> <li>• Ophthalmology</li> <li>• Developmental Pediatrician</li> <li>• GI/Nutrition</li> <li>• Sleep (if not addressed by another specialist)</li> <li>• OT</li> <li>- Address sensory needs</li> <li>• PT</li> <li>- Orthotics</li> <li>- Aqua therapy</li> <li>- hippotherapy</li> <li>• SLP</li> <li>- AAC</li> <li>• Vision therapy</li> <li>• Equipment referral (specialized stroller, car seat, safe sleep bed)</li> <li>• Applied behavioral analysis/behavioral therapy</li> <li>• Dental care</li> </ul>	<ul style="list-style-type: none"> <li>• Ferritin and ESR</li> <li>• CBC</li> <li>• Vitamin D</li> <li>• Diet Monitoring               <ul style="list-style-type: none"> <li>- CBC</li> <li>- Vitamin D</li> <li>- CMP</li> <li>- Selenium</li> <li>- Magnesium</li> <li>- Phosphorus</li> <li>- Zinc</li> <li>- Carnitine</li> <li>- BHB</li> <li>- Lipid panel</li> <li>- Urine calcium</li> <li>- Ionized calcium</li> </ul> </li> </ul>	<ul style="list-style-type: none"> <li>• Hip x-ray (especially if not ambulatory)</li> <li>• Spine x-ray</li> <li>• Consider EEG</li> <li>• Feeding evaluation               <ul style="list-style-type: none"> <li>- Levocarnitine if level borderline or low in patient on low carbohydrate diet (see Figure 2)</li> <li>- Sleep Management (see Figure 3)</li> <li>- Consider transition to Safe Sleep bed</li> <li>- Behavior Management (see Figure 4)</li> <li>- Treat constipation with stool softener + mild stimulant (e.g. senna, magnesium)</li> </ul> </li> </ul>	<ul style="list-style-type: none"> <li>• Diet: LGIT or ketogenic diet</li> <li>• Seizure management (see Figure 2)</li> <li>• MCT oil to support diet/constipation</li> <li>• Levocarnitine if level borderline or low in patient on low carbohydrate diet</li> <li>• Sleep Management (see Figure 3)</li> <li>• Consider transition to Safe Sleep bed</li> <li>• Behavior Management (see Figure 4)</li> <li>• Treat constipation with stool softener + mild stimulant (e.g. senna, magnesium)</li> </ul>

TABLE 1 (Continued)

Age	Medical eval	Anticipatory guidance	Medical referrals	Labs	Diagnostic	Medication/supplement considerations
5–13 years-old	<ul style="list-style-type: none"> <li>• Growth &amp; development</li> <li>• Seizures</li> <li>• Sleep</li> <li>• Behavior</li> <li>• Vision</li> <li>• Scoliosis</li> <li>• Mobility</li> <li>• Weight management</li> </ul>	<ul style="list-style-type: none"> <li>• Seizures</li> <li>• Non-epileptic myoclonus may emerge around the time of puberty</li> <li>• Sleep</li> <li>• LGIT/ketogenic diets</li> <li>• Hyperphagia</li> <li>• Constipation</li> <li>• Mobility (change in gait pattern, consider pain)</li> <li>• Constipation (can be linked to sleep disturbance, seizures, behavior changes)</li> <li>• Anxiety</li> <li>• Puberty <ul style="list-style-type: none"> <li>- Monitor seizures</li> <li>- Behavior changes</li> <li>- Plan for suppression of menses (in females)</li> </ul> </li> <li>• Routines/consistency in all environments <ul style="list-style-type: none"> <li>- Bedtime</li> <li>- Toileting (see Figure S1)</li> <li>- Daily activities</li> </ul> </li> <li>• Behavioral modification strategy</li> <li>• Safety plan (tracking if elopement is a concern)</li> <li>• IEP intervention <ul style="list-style-type: none"> <li>- PT<sup>b</sup></li> <li>- SLP: AAC integration</li> <li>- OT: focus on independence, activities of daily living</li> <li>- Para pro</li> </ul> </li> <li>• Inclusion where appropriate</li> <li>• Functional behavioral assessment and ABA/behavioral therapy services</li> <li>• Seizure plan (prophylactic medications)</li> <li>• Clinical Research<sup>a</sup></li> </ul>	<ul style="list-style-type: none"> <li>• Neurology</li> <li>• Medical Home/AS specialist</li> <li>• Ophthalmology</li> <li>• GI/Nutrition</li> <li>• Sleep (if not addressed by another specialist)</li> <li>• Orthopedics (as needed for mobility, scoliosis, DDH)</li> <li>• Obstetrics &amp; gynecology</li> <li>• SLP</li> <li>• AAC focus</li> <li>• OT</li> <li>• PT</li> <li>• Orthotics <ul style="list-style-type: none"> <li>- strengthening</li> <li>- Aqua therapy</li> </ul> </li> <li>• Hippotherapy</li> <li>• SPIDER therapy</li> <li>• Vision therapy</li> <li>• Applied behavioral analysis/behavioral therapy</li> <li>• Dental care</li> <li>• IEP advocate</li> </ul>	<ul style="list-style-type: none"> <li>• Ferritin and ESR</li> <li>• Vitamin D</li> <li>• CMP</li> <li>• CBC</li> <li>• Lipid panel</li> <li>• Diet Monitoring <ul style="list-style-type: none"> <li>- CBC</li> <li>- Vitamin D</li> <li>- CMP</li> <li>- Selenium</li> <li>- Magnesium</li> <li>- Phosphorus</li> <li>- Zinc</li> <li>- Carnitine</li> <li>- BHB</li> <li>- Lipid panel</li> <li>- Urine calcium</li> <li>- Ionized calcium</li> </ul> </li> </ul>	<ul style="list-style-type: none"> <li>• Hip x-ray (especially if not ambulatory)</li> <li>• Spine x-ray</li> <li>• NEM: rule out underlying causes <ul style="list-style-type: none"> <li>- constipation,</li> <li>- worsening sleep,</li> <li>- decreased appetite and poor nutrition,</li> <li>- changes in mobility related to decreased ROM and pain)</li> <li>• DEXA every 2 years if on low carbohydrate diet long-term,</li> <li>• non-ambulatory, delayed puberty or history of &gt;2 fractures</li> </ul> </li> </ul>	<ul style="list-style-type: none"> <li>• Diet: LGIT or ketogenic diet</li> <li>• Seizure management (see Figure 2)</li> <li>• MCT oil to support diet/constipation</li> <li>• Levocarnitine if level borderline or low in patient on low carbohydrate diet</li> <li>• Sleep Management (see Figure 3)</li> <li>• Consider transition to Safe Sleep bed</li> <li>• Behavior Management (see Figure 4)</li> <li>• Treat constipation daily with stool softener +mild stimulant (e.g. senna)</li> </ul>

TABLE 1 (Continued)

Age	Medical eval	Anticipatory guidance	Medical referrals	Labs	Diagnostic	Medication/supplement considerations
1–5 years old	<ul style="list-style-type: none"> <li>• Growth &amp; development</li> <li>• Seizures</li> <li>• Vision                             <ul style="list-style-type: none"> <li>- CVI</li> <li>- strabismus</li> </ul> </li> <li>• Feeding</li> <li>• Scoliosis</li> <li>• Sleep</li> <li>• Behavior</li> <li>• Mobility</li> </ul>	<ul style="list-style-type: none"> <li>• Early intervention services/IEP preparation</li> <li>• Seizures</li> <li>• LGIT/ketogenic diets</li> <li>• Routines                             <ul style="list-style-type: none"> <li>- Bedtime</li> <li>- Toileting (see Figure S1)</li> <li>- Daily activities</li> <li>- Behavioral modification strategy</li> </ul> </li> <li>• Limit-setting</li> <li>• Constipation (can be linked to sleep disturbance, seizures, behavior changes)</li> <li>• Activity                             <ul style="list-style-type: none"> <li>- Adaptive sports</li> <li>- Exercise 30–90 minutes per day</li> </ul> </li> <li>• Monitor gait over time</li> <li>• Sleep                             <ul style="list-style-type: none"> <li>- Consider role of seizures at night</li> </ul> </li> <li>• Support groups</li> <li>• Clinical research<sup>a</sup></li> </ul>	<ul style="list-style-type: none"> <li>• Neurology</li> <li>• Medical Home/AS specialist</li> <li>• Developmental Pediatrician (if not addressed by another specialist)</li> <li>• Sleep (if not addressed by another specialist)</li> <li>• Ophthalmology</li> <li>• GI/Nutrition</li> <li>• SLP                             <ul style="list-style-type: none"> <li>- AAC focus</li> </ul> </li> <li>• OT</li> <li>• PT                             <ul style="list-style-type: none"> <li>- Orthotics</li> <li>- strengthening</li> <li>- Aqua therapy</li> <li>- Hippotherapy</li> <li>- SPIDER therapy</li> </ul> </li> <li>• Vision therapy</li> <li>• Applied behavioral analysis/behavioral therapy</li> <li>• Dental care</li> </ul>	<ul style="list-style-type: none"> <li>• Ferritin and ESR</li> <li>• Vitamin D</li> <li>• Diet Monitoring                             <ul style="list-style-type: none"> <li>- CBC</li> <li>- Vitamin D</li> <li>- CMP</li> <li>- Selenium</li> <li>- Magnesium</li> <li>- Phosphorus</li> <li>- Zinc</li> <li>- Carnitine</li> <li>- BHB</li> <li>- Lipid panel</li> <li>- Urine calcium</li> <li>- Ionized calcium</li> </ul> </li> </ul>	<ul style="list-style-type: none"> <li>• Hip x-ray (especially if not ambulatory)</li> <li>• Spine x-ray (see Figure 2)</li> <li>• Consider EEG</li> <li>• Feeding evaluation</li> <li>• Consider sleep study (best if in home environment)</li> <li>• DEXA scan every 2 years if on low carbohydrate diet</li> </ul>	<ul style="list-style-type: none"> <li>• Diet: LGIT or ketogenic diet</li> <li>• Seizure management (see Figure 2)</li> <li>• MCT oil to support diet/constipation</li> <li>• Levocarnitine if level borderline or low in patient on low carbohydrate diet</li> <li>• Sleep Management (see Figure 3)</li> <li>• Consider transition to Safe Sleep bed</li> <li>• Behavior Management (see Figure 4)</li> <li>• Treat constipation daily with stool softener +mild stimulant (e.g. senna)</li> </ul>

TABLE 1 (Continued)

Age	Medical eval	Anticipatory guidance	Medical referrals	Labs	Diagnostic	Medication/supplement considerations
13–21 years-old	<ul style="list-style-type: none"> <li>• Independence with ADLs</li> <li>• Transition</li> <li>• Seizures</li> <li>• Sleep</li> <li>• Behavior</li> <li>• Scoliosis</li> <li>• Mobility</li> <li>• AAC use and integration</li> <li>• Weight management</li> </ul>	<ul style="list-style-type: none"> <li>• Seizures</li> <li>• Non-epileptic myoclonus may emerge around the time of puberty</li> <li>• Sleep</li> <li>• LGIT/ketogenic diets</li> <li>• Hyperphagia</li> <li>• Constipation</li> <li>• Mobility (change in gait pattern, consider pain)</li> <li>• Constipation (can be linked to sleep disturbance, seizures, behavior changes)</li> <li>• Anxiety</li> <li>• Puberty <ul style="list-style-type: none"> <li>- Monitor seizures</li> <li>- Behavior changes</li> <li>- Plan for suppression of menses (in females)</li> </ul> </li> <li>• Routines/consistency in all environments</li> <li>• Bedtime</li> <li>• Toileting (see Figure S1)</li> <li>• Daily activities</li> <li>• Behavioral modification strategy</li> <li>• Safety plan (tracking if elopement is a concern)</li> <li>• IEP intervention</li> <li>• PT<sup>b</sup></li> <li>• SLP: AAC integration</li> <li>• OT: focus on independence, ADL</li> <li>• Para pro</li> <li>• Inclusion where appropriate</li> <li>• Functional behavioral assessment and behavioral therapy services</li> <li>• Seizure plan (prophylactic medications)</li> <li>• Clinical Trials</li> <li>• Socialization</li> <li>• Vocational opportunities</li> <li>• Guardianship</li> <li>• Transition of care</li> <li>• Support groups</li> <li>• DDA services</li> <li>• Clinical Research<sup>a</sup></li> </ul>	<ul style="list-style-type: none"> <li>• Neurology</li> <li>• Medical Home/AS specialist</li> <li>• Ophthalmology</li> <li>• Sleep (if not addressed by other specialist)</li> <li>• GI/Nutrition</li> <li>• Orthopedics (as needed for mobility, scoliosis)</li> <li>• Obstetrics &amp; gynecology</li> <li>• SLP</li> <li>• AAC focus</li> <li>• OT</li> <li>• PT</li> <li>• Orthotics</li> <li>• strengthening</li> <li>• Aqua therapy</li> <li>• Hippotherapy</li> <li>• SPIDER therapy</li> <li>• Applied behavioral analysis/behavioral therapy</li> <li>• Dental care</li> <li>• IEP advocate</li> </ul>	<ul style="list-style-type: none"> <li>• Ferritin and ESR</li> <li>• Vitamin D</li> <li>• Diet Monitoring <ul style="list-style-type: none"> <li>- CBC</li> <li>- Vitamin D</li> <li>- CMP</li> <li>- Selenium</li> <li>- Magnesium</li> <li>- Phosphorus</li> <li>- Zinc</li> <li>- Carnitine</li> <li>- BHB</li> <li>- Lipid panel</li> <li>- Urine calcium</li> <li>- Ionized calcium</li> </ul> </li> </ul>	<ul style="list-style-type: none"> <li>• Spine x-ray</li> <li>• NEM: rule out underlying causes <ul style="list-style-type: none"> <li>- constipation, worsening sleep, decreased appetite and poor nutrition, changes in mobility related to decreased ROM and pain)</li> </ul> </li> <li>• DEXA every 2 years if on low carbohydrate diet long-term,</li> <li>• diet non-ambulatory, delayed puberty or history of &gt;2 fractures</li> </ul>	<ul style="list-style-type: none"> <li>• Diet: LGIT or ketogenic diet</li> <li>• Seizure management (see Figure 2)</li> <li>• MCT oil to support diet/constipation</li> <li>• Levocarnitine if level borderline or low in patient on low carbohydrate diet</li> <li>• Sleep Management (see Figure 3)</li> <li>• Consider transition to Safe Sleep bed</li> <li>• Behavior Management (see Figure 4)</li> <li>• Treat constipation daily with stool softener +mild stimulant (e.g. senna)</li> </ul>



TABLE 1 (Continued)

Age	Medical eval	Anticipatory guidance	Medical referrals	Labs	Diagnostic	Medication/supplement considerations
Adults	<ul style="list-style-type: none"> <li>• Independence with ADLs</li> <li>• Seizures</li> <li>• Sleep</li> <li>• Behavior</li> <li>• Scoliosis</li> <li>• Mobility</li> <li>• AAC use and integration</li> <li>• Weight management</li> </ul>	<ul style="list-style-type: none"> <li>• Non-epileptic myoclonus</li> <li>• Sleep</li> <li>• LGIT/ketogenic diets</li> <li>• Hyperphagia</li> <li>• Constipation</li> <li>• Mobility (change in gait pattern, consider pain)</li> <li>• Introduction and/or use of AAC</li> <li>• Constipation (can be linked to sleep disturbance, seizures, behavior changes)</li> <li>• Anxiety</li> <li>• Puberty                             <ul style="list-style-type: none"> <li>- Monitor seizures</li> <li>- Behavior changes</li> <li>- Plan for suppression of menses (in females)</li> </ul> </li> <li>• Routines/consistency in all environments                             <ul style="list-style-type: none"> <li>- Bedtime</li> <li>- Toileting (see Figure S1)</li> <li>- Daily activities</li> <li>- Behavioral modification strategy</li> <li>- Safety plan (tracking if elopement is a concern)</li> </ul> </li> <li>• Seizures</li> <li>• Socialization</li> <li>• Vocational training</li> <li>• Guardianship</li> <li>• Transition of care</li> <li>• Support groups</li> <li>• DDA</li> <li>• Preventive Medicine for adults                             <ul style="list-style-type: none"> <li>- Breast examination/mammograms</li> <li>- Prostate examination</li> <li>- Colonoscopy</li> </ul> </li> <li>• Clinical research<sup>a</sup></li> </ul>	<ul style="list-style-type: none"> <li>• Medical Home/AS specialist</li> <li>• Neurology</li> <li>• Ophthalmology</li> <li>• Sleep (if not addressed by other specialist)</li> <li>• GI/Nutrition</li> <li>• Orthopedics (as needed for mobility, scoliosis)</li> <li>• Obstetrics &amp; gynecology</li> <li>• SLP                             <ul style="list-style-type: none"> <li>- AAC focus</li> </ul> </li> <li>• OT                             <ul style="list-style-type: none"> <li>- Focus on function and ADLs</li> </ul> </li> <li>• PT                             <ul style="list-style-type: none"> <li>- Orthotics</li> <li>- strengthening</li> <li>- Aqua therapy</li> <li>- Hippotherapy</li> <li>- SPIDER therapy</li> </ul> </li> <li>• Applied behavioral analysis/behavioral therapy</li> <li>• Dental care</li> </ul>	<ul style="list-style-type: none"> <li>• Ferritin and ESR</li> <li>• Vitamin D</li> <li>• Diet Monitoring                             <ul style="list-style-type: none"> <li>- CBC</li> <li>- Vitamin D</li> </ul> </li> <li>• CMP</li> <li>• Selenium</li> <li>• Magnesium</li> <li>• Phosphorus</li> <li>• Zinc                             <ul style="list-style-type: none"> <li>- Carnitine</li> </ul> </li> <li>• BHB</li> <li>• Lipid panel</li> <li>• Urine calcium</li> <li>• Ionized calcium</li> </ul>	<ul style="list-style-type: none"> <li>• Spine x-ray</li> <li>• Consider EEG</li> <li>• Consider sleep study (best if in home environment)</li> <li>• NEM: rule out underlying causes                             <ul style="list-style-type: none"> <li>- constipation, worsening sleep, decreased appetite and poor nutrition,</li> </ul> </li> <li>• Levocarnitine if level borderline or low in patient on low carbohydrate diet</li> <li>• Sleep Management (see Figure 3)</li> <li>• Consider transition to Safe Sleep bed</li> <li>• Behavior Management (see Figure 4)                             <ul style="list-style-type: none"> <li>• Treat constipation daily with stool softener +mild stimulant (e.g. senna)</li> <li>• Preventive healthcare as guidelines recommend for adults (e.g. Pap smear, prostate screening, breast exam, mammogram, colonoscopy); however, anesthesia is required</li> </ul> </li> <li>• DEXA scan for females &gt;65 years old to screen for osteoporosis</li> </ul>	<ul style="list-style-type: none"> <li>• Diet: LGIT or ketogenic diet</li> <li>• Seizure management (see Figure 2)</li> <li>• MCT oil to support diet/constipation</li> </ul>

Abbreviations: AAC, augmentative and assistive communication device; ABA, applied behavioral analysis; ADL, activity of daily living; AS, Angelman Syndrome; BHB, beta-hydroxybutyrate; CBC, complete blood counts; CMP, comprehensive metabolic panel; CVI, cortical visual impairment; DDA, Developmental Disabilities Administration; DEXA, dual-energy x-ray absorptiometry; ESR, erythrocyte sedimentation rate; GERD, gastroesophageal reflux disease; GI, gastroenterology; IEP, individualized education plan; LGIT, low glycemic index therapy; MCT, medium chain triglycerides; NEM, non-epileptic myoclonus; OT, occupational therapy; PT, physical therapy; SLP, speech & language pathology; SPIDER, Strengthening Program of Intensive Developmental Exercises and Activities for Reaching Maximal Potential; VFSS, video fluoroscopic swallow study.

<sup>a</sup>Clinical research opportunities include participation in the Global Angelman Registry, Natural History Study, and currently recruiting clinical trials.

<sup>b</sup>PT involvement providing support as needed in collaboration with IEP team to maximize participation within classroom and access of school environment.

attempted initially (Smith, 2001). Use of medications such as selective serotonin reuptake inhibitors with decreased libido as a side effect may be helpful. Anti-androgen therapy is not recommended. Fertility in individuals with AS is presumably normal. Their sociable disposition and cognitive impairment make them vulnerable to abuse (Smith, 2001). Regular Pap smear and gynecological exam under anesthesia is recommended per general guidelines, as individuals have a similar lifetime risk of uterine cancer to the general population.

### 3.1.4 | Immunization

Patients with AS have no evidence of immunodeficiency. Regular vaccination schedules are recommended, including vaccination for seasonal pathogens. COVID-19 vaccination is recommended.

### 3.1.5 | Heat intolerance

Individuals with AS tend to overheat, presenting as flushing and diaphoresis. Predisposition to dehydration lowers seizure threshold. Breathable clothing is advised, including during sleep when overheating impacts sleep quality. Strategies to manage heat intolerance include limiting time outdoors when hot, encouraging intake of cold fluids, fans, water mist, cool rags, visors, sunglasses, and UV protective clothing.

### 3.1.6 | Toileting

In the literature, daytime urinary continence is reported in 35% but clinical experience suggests 75% (Radstaake et al., 2013). Regular toilet visits, diaper removal, positive reinforcement, and close monitoring contribute to success in continence (Radstaake et al., 2014). All toileting activities should be encouraged in the restroom including diaper changes. Strategies also include Applied Behavioral Analysis (ABA) to work on routine and reward-based interventions (Radstaake et al., 2014; Warzak et al., 2016). Nighttime urinary continence is less common but facilitated by fluid restriction after dinner and toileting before bedtime. Please refer to Supplemental Figure I for guidance to an approach to toilet training (Figure S1).

### 3.1.7 | Dental

Brushing after teeth erupt is challenging. A double sided or electric toothbrush may be better tolerated. Mouthing,

chewing, and gastroesophageal reflux disease (GERD) can cause erosion of the enamel. Drooling, causing continuous rinsing of the teeth, is a positive factor in dental hygiene. AS individuals may require sedation or anesthesia to conduct dental examinations and procedures, but this should not delay care (Khan et al., 2019).

### 3.1.8 | Anesthesia

Complications of anesthesia are rare, and typical management by the anesthesiologist is generally safe (Errando et al., 2007; Gardner et al., 2008; Kemper et al., 2010; Kim et al., 2010; Makris et al., 2018; Patil & Sindhakar, 2008; Rosado Fuentes et al., 2009; Warner et al., 2017; Witte et al., 2011). Specific intraoperative considerations associated with anesthesia include GABA receptor involvement in AS, since many intravenous and inhaled anesthetic agents modulate these receptors. Malignant bradyarrhythmias have been reported. Additional concerns include bradycardia due to increased vagal tone and delayed response to atropine (Gardner et al., 2008). A recent retrospective review suggests atypical responses to benzodiazepines, with one patient requiring flumazenil rescue; complications regarding airway management with one patient requiring videolaryngoscopic intubation; and a 2-year-old with intraoperative bronchospasm (Warner et al., 2017). Insufficient evidence exists to make specific anesthetic recommendations.

## 3.2 | Epilepsy and movement disorders

Epilepsy occurs in up to 90% of individuals and is most common in those with a deletion (Bindels-de Heus et al., 2020; Khan et al., 2019; Pelc et al., 2008; Williams, 2005; Williams et al., 2006). The mean age at onset of seizures was 1.7 years of age (range 3 months to 5 years) (Khan et al., 2019). Although at least 80–90% of children with deletions will develop epilepsy, the prevalence of seizures with mutations and UPD is up to 75%, and up to 50% for those with ICD (Thibert et al., 2009). Although the rate of seizures in the non-deletion group is lower than the deletion group, 15% of seizures in the non-deletion subtype had onset after age 5 years (equals 5% of all seizures, unpublished Rare Diseases Clinical Research Network).

For up to 1/3 of individuals, the first seizure will occur in the setting of a febrile illness (Thibert et al., 2013). Seizures tend to improve after puberty with a case series of 53 adults showing 65% resolution beginning at an average age of 16 years (Prasad et al., 2018). Seizure types at initial seizure presentation include myoclonic—25%,

atonic—23%, generalized tonic-clonic—21%, and atypical absences—12%. There are case reports of infantile spasms, but this seizure type is generally rare in AS. AS seizures are typically generalized, but up to 30% may also have focal seizures (Conant et al., 2009; Khan et al., 2019; Matsumoto et al., 1992; Pelc et al., 2008; Pollack et al., 2018; Prasad et al., 2018; Ranasinghe et al., 2015;9:142.; Sugimoto et al., 1992; Thibert et al., 2009, 2013).

Non-convulsive status epilepticus (NCSE) is common, typically consisting of periods of decreased responsiveness or alertness, which may last hours to days, often with loss of developmental skills (Fujikawa et al., 2003; Ohtsuka et al., 2005; Yang et al., 2010). NCSE typically presents with few to no clinical seizures, so it may go unrecognized. While rates of NCSE have been reported in 50–90% of the population in older studies, a very recent study of 100 AS children followed over 7 years found that 19% had an episode of NCSE, while 5% experienced convulsive status epilepticus (Bindels-de Heus et al., 2020). In a case series of 104 children in 2018, the rate was 20% (Worden et al., 2018). Rarely, NCSE will be accompanied by frequent myoclonic jerks, which is known as myoclonic status in non-progressive encephalopathies (MSNPE)(Caraballo et al., 2007).

In addition to myoclonic seizures and MSNPE, individuals also have non-epileptic myoclonus (NEM) most consistent with a movement disorder. Myoclonic seizures occur in younger age groups, whereas NEM occurs during adolescence and adulthood (Pollack et al., 2018). Both can be disabling, but myoclonic seizures have an EEG correlate and are generally controlled with medication as compared to NEM, which has no EEG correlate and can be disabling and refractory, though there is no alteration in consciousness (Casara et al., 1995; Pollack et al., 2018). Although evidence is lacking, experience suggests patients may benefit from medications effective in treating myoclonic seizures, such as levetiracetam, clobazam, and clonazepam, but the mainstay of therapy is to minimize triggers, such as poor sleep, GI dysfunction, and anxiety. A recent publication suggests a possible benefit of perampanel in the treatment of NEM (Kawano et al., 2020). In addition to NEM, AS movement disorders include tremor, ataxia, and possibly dystonia.

Evaluation for seizures includes an EEG, which is characterized by high amplitude slow (delta and theta) waves and a relative lack of normal background rhythms. High voltage (>300 microvolts) slowing with a “notched” delta (1–3 Hz) pattern is present in over 90% of individuals and provides a diagnostic clue (Korff et al., 2005; Laan et al., 1997; Sidorov et al., 2017; Thibert et al., 2013; Valente et al., 2003; Vendrame et al., 2012; Wang et al., 2005). Long-term video EEG recording helps determine if a behavioral episode is a seizure or a non-epileptic event. Blood chemistry and complete blood count testing exclude metabolic triggers and offer a baseline. Lumbar puncture

and brain imaging are not indicated unless considering other etiologies.

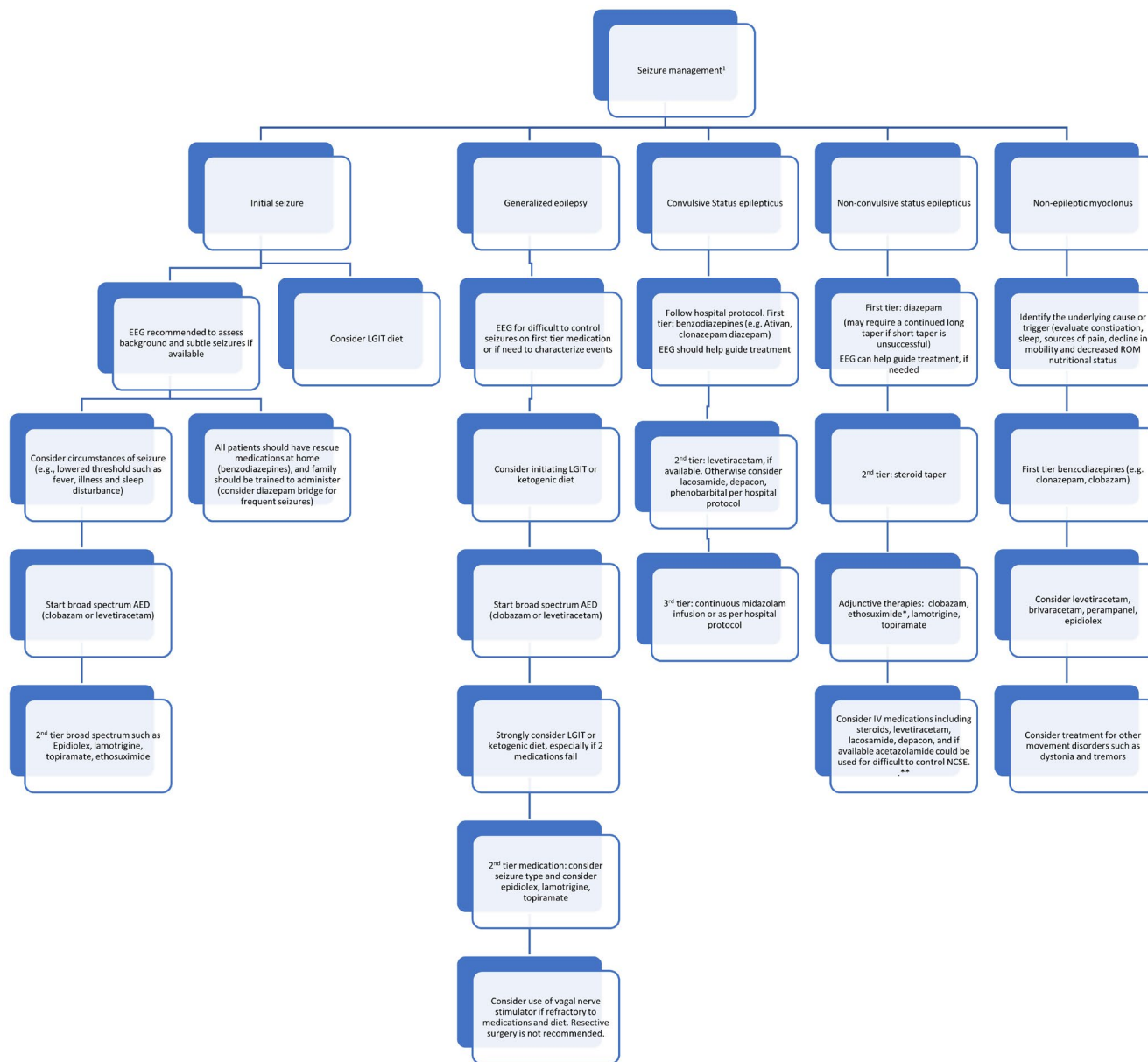
There are no comparative trials of the various anti-convulsant drugs (ACDs); thus, clinical practice is based on case series (Dan et al., 2007; Ostergaard & Balslev, 2001; Shaaya et al., 2016; Thibert et al., 2009). The ACDs likely to provide benefit with limited adverse effects include clobazam, levetiracetam, and clonazepam (Figure 2). The consensus recommendation is to treat with clobazam or levetiracetam as first line therapy and to consider dietary intervention, including a ketogenic diet (KD) (Evangelidou et al., 2010; Groesbeck et al., 2006) or low glycemic index therapy (LGIT)(Grocott et al., 2017; Shaaya et al., 2016; Thibert et al., 2012). KD is recommended for infants and children with feeding tubes, whereas for other children, LGIT is recommended as first-line dietary therapy. If not completely effective, LGIT is converted to KD. Failure to control seizures with two medications warrants referral to an epileptologist. Since generalized seizures are prominent, broad spectrum ACDs are recommended. Phenobarbital, primidone, carbamazepine, phenytoin, and vigabatrin are contraindicated (Nolt et al., 2003). Parental reports of the effects of various forms of artisanal cannabidiol (CBD) for epilepsy are promising (unpublished); there is now an FDA-approved CBD medication (Epidiolex). Although little evidence exists, this is a promising medication for seizures, and it may help NEM. The high rate of motor side effects caused by valproic acid indicates sparing use unless as a bridge medication or failure of other ACDs and diet (Shaaya et al., 2016). AS individuals should receive a prescription for a rescue medication such as rectal diazepam gel or intranasal midazolam for prolonged seizures. Interruption therapy for episodes of NCSE with diazepam divided 2–3 times daily with a taper over 5–7 days has benefit (Worden et al., 2018).

Seizure alarm devices may be considered but are not particularly helpful for subtle seizure types such as atonic and atypical absence seizures. Caregivers should be educated on seizure management, particularly on the recognition of NCSE. Some with AS are able to come off of ACDs eventually, but there are no clear guidelines. While ~65% of adults will become seizure-free, many adolescents and adults will stay on ACDs, such as clobazam and clonazepam, to treat symptoms like sleep, anxiety, and NEM.

### 3.3 | Gastrointestinal (Table S2)

#### 3.3.1 | GERD/Vomiting

GERD is common and may persist or recur in adulthood (Bindels-de Heus et al., 2020; Glassman et al., 2017).



**FIGURE 2** Management Algorithm for Seizures in Angelman Syndrome (AS). 1 Ask all patients about drug allergies. \* Avoid phenytoin and phenobarbital for NCSE. All patients should have an emergency plan for management of seizures. Abbreviation ACD anticonvulsant drug; EEG electroencephalogram; LGIT low glycemic index therapy; NCSE nonconvulsive status epilepticus.

Signs include gagging, frequent swallowing, and pain or discomfort during and after feeding. In infants, therapy often starts with feeding in an upright position and keeping the child in this position for at least 30 mins post-feeding. Adjustments in posture (e.g. side lying position), technique, and formula are helpful. Consideration should be given to thickening feeds and dietary modifications. Referral for intensive feeding therapy is recommended. Uncontrolled GERD may cause esophagitis and upper GI bleeding. In older individuals, vomiting can be a sign of gastroparesis. Back arching, poor sleep, gagging, regurgitation of food, and unexplained discomfort should prompt a trial of a proton pump inhibitor

or H2 blocker. Prokinetic medication may treat refractory symptoms. Causes of vomiting include severe constipation, migraine variants, rumination, urinary tract infection, medication side effects, and anxiety. In some, vomiting becomes behavioral.

### 3.3.2 | Constipation

The prevalence of constipation is 80% and requires treatment (Bindels-de Heus et al., 2020; Glassman et al., 2017). Constipation may contribute to increased seizures, sleep disturbance, and behavioral changes.

The workup includes evaluation of fluid and fiber intake and adding dietary fiber when appropriate. Adding magnesium, probiotics, or medium-chain triglyceride oil to the diet may help. Stool softeners are typically the next step after dietary changes, followed by stimulants. Refractory constipation may require intermittent or regular suppositories.

### 3.3.3 | Cyclic vomiting

Individuals may present with persistent vomiting episodes with serial vomiting and intervening symptom-free periods (Glassman et al., 2017). This is distressing and often results in dehydration. The etiology may be a migraine variant, though anxiety and/or GERD may also play a role. In addition, allergies and/or acute illness causing congestion and post-nasal drip may result in persistent emesis that requires antiemetics and/or fluid resuscitation. Treatment for chronic migraines, including amitriptyline, cyproheptadine, and topiramate, or treatments for anxiety and GERD as needed may be beneficial.

### 3.3.4 | Hyperphagia

Hyperphagia defined as inability to recognize satiety and related behaviors is recognized (Bindels-de Heus et al., 2020; Carson et al., 2019; Fridman et al., 1998; Hanzlik et al., 2020; Kirkilionis et al., 1991). This may be characterized by an obsessive compulsive component and driven by times of anxiety, change in routine or transition in general. Those with uniparental disomy or ImpDs are at higher risk (Carson et al., 2019; Fridman et al., 1998). Management strategies include scheduled meal times with a visual schedule, the use of partitioned and smaller plates, and a diet with increased protein and decreased carbohydrates. Locking up food may be necessary. Food for rewards should be avoided. Prospective data from 100 parents of children with AS showed that 32% reported hyperphagia, varying from no intrinsic limit in eating to searching for food and eating nonfood items (Bindels-de Heus et al., 2020). Up to 50% of adults have hyperphagia. Elevated body mass index (BMI) was associated with hyperphagia (Bindels-de Heus et al., 2020).

### 3.3.5 | Food allergy and Eosinophilic Esophagitis

For children with difficult GI symptoms, food allergy testing should be considered. When allergy testing is

negative, food sensitivities (e.g., dairy and gluten) may be present. An elimination diet, i.e., removing one food at a time for a short period (~2 weeks), may be helpful to identify the foods that worsen gas, bloating, and constipation. Some children with food allergies develop eosinophilic esophagitis (EoE), which typically requires an elimination diet and treatment with medications prescribed by gastroenterologists or allergists. In a case series from 2 clinics, 4% of 97 children with deletions or UPD had EoE, whereas none of the 23 children with mutations or ImpD had EoE (Glassman et al., 2017).

### 3.3.6 | Drooling

Drooling is caused by open-mouth behavior, less frequent swallowing, or problems associated with the oral phase of swallowing. Unless there is accompanying aspiration, there is no indication for therapy, but social acceptance is a concern. Use of bibs and absorbent wristbands for mouth wiping are usually adequate. Stimulation of mouth closure and active swallowing can be done. Anticholinergic therapies such as glycopyrrolate or sublingual administration of atropine eyedrops (Norderyd et al., 2017) or parotid botulinum toxin injections may be employed, but the adverse effect of reducing saliva on dental health should be considered (Gonzalez et al., 2017; Moller et al., 2015; Nordgarden et al., 2012; Pena et al., 2009; Reid et al., 2013). Side effects, like constipation, dry eyes, and thickened sputum, may prohibit these treatments.

### 3.3.7 | Dietary therapy

Research is necessary to further elucidate the optimal recommendations for dietary management. KD and LGIT are indicated for refractory epilepsy, but may also have other benefits (Evangelidou et al., 2010; Grocott et al., 2017; Groesbeck et al., 2006; Shaaya et al., 2016; Thibert et al., 2012). The classic KD is calculated in a ratio of grams (g) of fat to g of protein plus carbohydrate combined with 90% of calories from fat (Bergqvist, 2012; Evangelidou et al., 2010; Kossoff et al., 2002, 2018; Kwiterovich et al., 2003). A 3:1 or lower ratio can be used to increase protein or carbohydrate intake and is appropriate for diet initiation (Table S5)(Kossoff et al., 2018).

LGIT allows liberalization of carbohydrate intake to 40–60 g/day but regulates the type of carbohydrates, favoring those that produce small changes in blood glucose (glycemic index <50). The main side effects of KD/LGITs are gastrointestinal disturbances, hyperlipidemia (temporary), metabolic acidosis, and occasional renal calculi (Bergqvist, 2012; Kossoff et al., 2018). Children

with treatment-resistant epilepsy are at a high risk for poor bone health due to prolonged ACD exposure, direct and indirect effects of ACDs on calcium and vitamin D metabolism, and motor impairments that affect weight-bearing. The combined effect of KD creating a high “acid load” via ketone bodies, alterations in vitamin D, and lowering of growth factors increases this risk (Bergqvist, 2012; Bergqvist et al., 2007, 2008). In the optimal clinical management recommendations of the KD Study Group, 48% of centers advocate screening with dual energy X-ray absorptiometry (DEXA) scan in children to evaluate for osteopenia when on the KD for >2 years (Kossoff et al., 2018). Supplementation with vitamin D, calcium, and B vitamins should be provided at the recommended daily allowance (Vestergaard & Sayegh, 1966). A multivitamin with minerals is a universal recommendation (Makris et al., 2018). Levels of carnitine, selenium, magnesium, zinc, phosphorus, iron, and copper should be monitored along with beta-hydroxybutyrate while on dietary therapy. Individuals with hyperphagia may benefit from more liberalized KDs such as Modified Atkins Diet or LGIT (Bindels-de Heus et al., 2020).

### 3.4 | Sleep

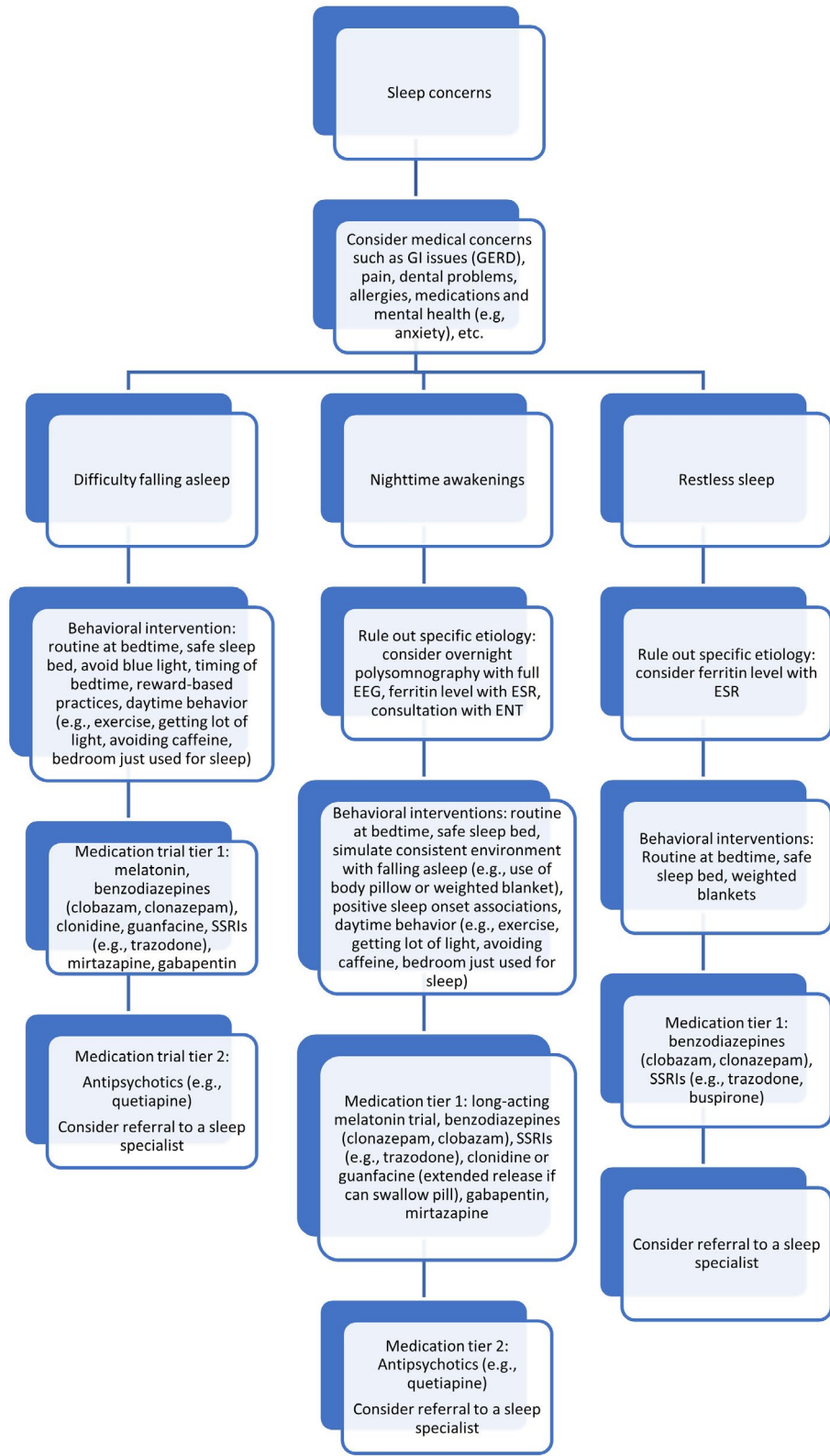
Sleep problems are present in up to 80% of individuals with AS (Williams, 2005), including problems with settling and insomnia, awakenings during the night, and early awakening. Besides a shorter sleep duration, sleep tends to be more fragmented (Bruni et al., 2004; Miano et al., 2004, 2005). Sleeping difficulties decrease with age, although many adolescents and adults continue to have disordered sleep and co-sleep (Walz et al., 2005).

Poor sleep quality and diminished amounts of REM sleep negatively impact the regulation of behavior and worsen seizures (Dosier et al., 2017). Changes in behavior should prompt consideration of new onset sleep disorders. Epilepsy, ACDs, GERD, scoliosis, and constipation can further negatively impact sleep (Bindels-de Heus et al., 2020). Individuals with AS should be screened for sleep problems and, if present, a detailed characterization of the sleep/wake schedule and routines should be investigated. Overnight polysomnography is indicated for individuals suspected of having sleep-related breathing problems, nocturnal seizures, or unusual behavior during sleep. Given anxiety in unfamiliar environments, polysomnography may be challenging. A sleep diary and actigraphy (Braam et al., 2008; Iii, 2015) are non-invasive means of characterizing sleep/wake patterns in the home environment. Video polysomnography may help to objectively observe sleep patterns.

For sleep disorders, treatment of contributing problems such as GERD, epilepsy, and behavioral issues including anxiety should be optimized. Specific sleep disorders such as obstructive sleep apnea (OSA) should be managed with the help of appropriate specialists. Sleep problems are initially treated with behavioral therapies and promoting sleep hygiene. Optimal sleep hygiene consists of a regular sleep-wake rhythm, a bedtime routine, and a bedroom that is calm, cool, and dark (Hylkema & Vlaskamp, 2009). Individuals with AS benefit greatly from safety beds and we often recommend early referral for an enclosed bed in planning for transition from the crib. Behavioral therapies often consist of managing parent-child interaction at night. Intensive coaching of parents can support behavioral interventions (Allen et al., 2013). Medicinal treatments targeting sleep difficulties are beneficial and often needed if behavioral therapies are ineffective. These include low-dose melatonin (Braam et al., 2008; Egan et al., 2020; Galvan-Manso et al., 2002; Paprocka et al., 2017; Takaesu et al., 2012; Zhdanova et al., 1999), alpha agonists (clonidine or guanfacine), benzodiazepines (clonazepam), gabapentin or pregabalin, antihistamines (promethazine or diphenhydramine), antidepressants (mirtazapine (Hanzlik et al., 2020) or trazodone), and in refractory cases antipsychotics (e.g. quetiapine (Wine et al., 2009), Figure 3).

### 3.5 | Cognitive and behavioral phenotypes

The neurodevelopmental profile of AS includes severe intellectual disability, global developmental delay, and lack of speech (Dagli et al., 2012). Studies have found significant delays across all domains, with cognitive skills trending below the 24–30 months developmental level, using the Bayley Scales of Infant Development (Gentile et al., 2010; Peters et al., 2004; Sahoo et al., 2007). Severity of cognitive delay correlates with molecular subtype (deletion is most severe), (Keute et al., 2020) but additional factors may contribute, such as underlying seizure control, selection of ACDs, access to habilitative therapies, and genetic background. Tables S2–S4 provide details of therapeutic interventions. At the time of delays, even prior to an official genetic diagnosis, referral to early interventional services for physical (PT), occupational (OT), and speech and language therapy (ST) are needed. Therapies should continue throughout life (Khan et al., 2019). Individuals with AS may benefit from alternative therapies in particular hydrotherapy especially due to their love of water. There is some evidence this improves behavior and social interaction in autism spectrum disorders (ASD) (Gueita-Rodriguez et al., 2021; Mortimer et al., 2014). In addition it improves functional mobility of infant and toddlers



**FIGURE 3** Management Algorithm for Sleep Disturbances in Angelman Syndrome (AS). Abbreviations: GI gastrointestinal; GERD gastroesophageal reflux disease, EEG electroencephalogram; ESR erythrocyte sedimentation rate; ENT otolaryngologist/ear, nose and throat specialist.

(McManus & Kotelchuck, 2007), although the literature is varied (Getz et al., 2006). Hippotherapy benefits gross motor function and functional performance in individuals with neurodevelopmental disabilities (Park et al., 2014). It has been associated with improved body balance and posture and may have benefits for overall core strength (Matusiak-Wieczorek et al., 2016). Little evidence-base is available to suggest short periods of intensive physiotherapy; however, anecdotally programs such as Strengthening Program of Intensive Developmental Exercises and Activities for Reaching Maximal Potential or SPIDER therapy may be beneficial. More studies are required to recommend this to individuals with AS.

Frequent smiling and laughing resulting in an apparent happy disposition are hallmarks (Williams et al., 2006). Laughter may increase markedly with anxiety and some patients appear discomforted during pervasive bouts of laughter. Although rare, life-threatening laughter is amenable to pharmacological treatment (Vanagt et al., 2005). Hyperactivity or hypermotoric behavior is consistently reported (Buntinx et al., 1995; Galvan-Manoso et al., 2002; Zori et al., 1992). Impulsivity is consistent with the level of intellectual disability (Barry et al., 2005). High rates of disruptive behaviors are reported (Arron et al., 2011; Larson et al., 2015; Sadhwani et al., 2019) during periods of excitement, while attempting to avoid nonpreferred tasks, or when seeking to maintain a caregiver's attention (Strachan et al., 2009). Such behaviors often appear to have communicative intent and may be triggered by internal states such as pain, fatigue, anxiety, or a preference for specific sensory input. A recent study using a modified anxiety questionnaire in 100 caregivers found high levels of distress with separation (Wheeler et al., 2019), which was lowest in individuals with a deletion subtype.

Individuals with AS have many features of ASDs such as repetitive behaviors and restricted/obsessive interests. This can include repetitive chewing/mouthing and stereotyped hand and body movements (Moss & Howlin, 2009). Sometimes, these movements are used to focus on a task or to reduce stimuli from the environment. Individuals with AS often respond to ABA therapy and referral is recommended for maladaptive behaviors and ASD features.

New onset behavioral concerns or changes in sleep habits should prompt a thorough exploration for unrecognized medical illness/infection, constipation, dysmenorrhea, esophageal reflux, dental problems, scoliosis or post-ictal confusion/sedation. Behavioral therapies, such as ABA, along with the use of an augmentative and assistive communication (AAC) device, should play an important role in the understanding and treatment of behavioral concerns, including reduction of problem behaviors and development of adaptive skills (Summers, 2012). Medication management is often needed (Figure 4).

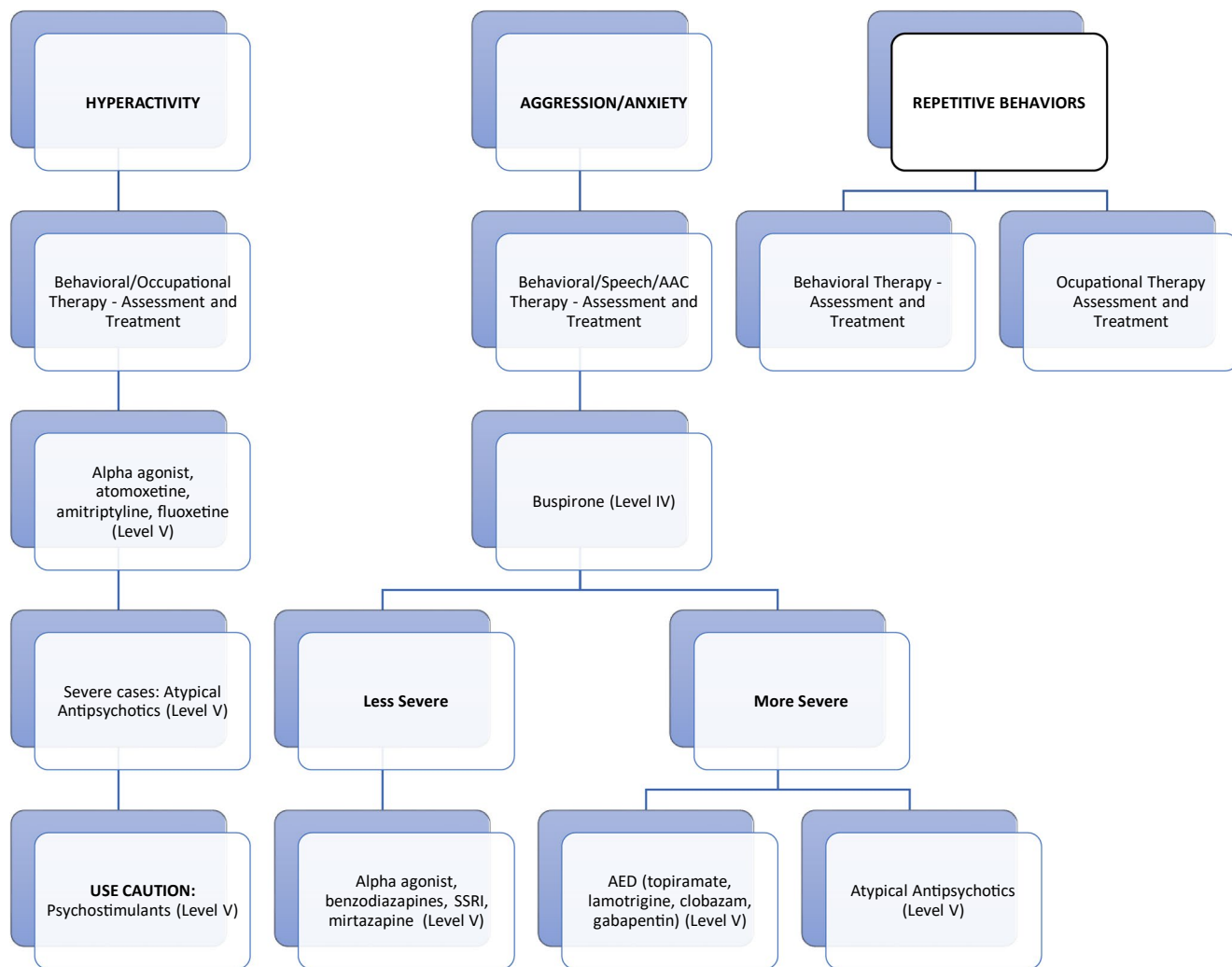
Educators may have limited knowledge of AS. Developing an appropriate individualized education plan (IEP) capitalizing on the person's social skills while focusing on individualized 1:1 learning and instruction is critical to maximize educational potential as well as to improve communication and motor skills. Consistent with the Individuals with Disabilities Education Act, education should take place in the least restrictive environment. For some children with AS this might be in an integrated classroom alongside typically developing children, while for others it may be in a self-contained classroom, or a combination of the two. Decisions about appropriate school/classroom placement should be arrived at through shared decision-making between the school and family. Some individuals, particularly of the mosaic subtype achieve the ability to read and write to some degree (Hanzlik et al., 2020). The IEP should include intensive PT, OT, and ST (Table S2–S4). Parents, teachers, and caregivers should be trained and supported in the use of the AAC device with carryover from school to the home environment. If a child has behavioral challenges, as part of the IEP, families can request a functional behavioral assessment to assess for triggers and develop a management plan (Williams et al., 2006). A thorough AAC evaluation includes trials of at least 3 different AAC systems to effectively select the best device for the individual.

### 3.6 | Ophthalmology (Table S2)

Evaluation by ophthalmology is recommended at diagnosis and annually (Dickinson et al., 1990). Strabismus is common (Khan et al., 2019; Michieletto et al., 2011; Williams, 2005). Conservative measures such as patching or corrective lenses are often difficult to implement because of an inability to cooperate with the treatment. Thirty percent of persons require strabismus surgery (Khan et al., 2019). In two small case series, persons with large angle exotropia showed excellent 6-month post-operative alignment after bilateral lateral rectus recessions (Mah et al., 2000; Ye et al., 2019).

Astigmatism is the most common refractive error. Almost all patients in an Italian study as well as 2 smaller series exhibited at least 1 diopter, with more than half showing potentially amblyogenic levels of astigmatism (>2 diopters) (Michieletto et al., 2011; Ye et al., 2019). While keratoconus has been described in adults, it is unclear whether this finding is associated with childhood astigmatism or behavioral eye rubbing (Larson et al., 2015). Further, in the Italian study, greater than 1 diopter of hyperopia or myopia was seen in 76% and 9% of the individuals, respectively (Michieletto et al., 2011). Thus, the majority of these children fit the general criteria for





**FIGURE 4** Management Algorithm for Behavior in Angelman Syndrome (AS). Abbreviation ACD anticonvulsant drug; AAC assistive and augmentative communication device; SSRI selective serotonin reuptake inhibitor.

corrective lenses; however, tolerance of glasses is low, and rates of amblyopia have not been reported.

Assessment is often based on ophthalmic findings and visual behavior. In the literature, some individuals with AS have severe ophthalmic pathology such as optic and chorioretinal atrophy accounting for poor visual function (Rufa et al., 2003; Van Splunder et al., 2003). Clinically one of the first symptoms may be cortical visual impairment that improves with time (Micheletti et al., 2016). There is a wide spectrum of characteristics in cortical visual impairment that ranges from complete blindness to altered visual perception. Nystagmus has been reported in 11% of patients with cortical visual impairment (Huo et al., 1999). Consistent with this, 9% of individuals with AS exhibited nystagmus (Micheletto et al., 2011). Referral for OT/PT and vision/mobility services to maximize visual function is critical.

Oculocutaneous albinism due to a mutation in the *OCA2* gene located on the paternal copy of chromosome

15 should be considered in individuals with AS who have congenital nystagmus, iris hypopigmentation and translucency, reduced pigmentation of the retinal pigment epithelium, and foveal hypoplasia. Identification of children with oculocutaneous albinism due to a deletion on chromosome 15 and a mutation on the other allele is important due to changes in management including regular use of sunscreen, management of low vision, regular ophthalmology follow up, and cancer screening.

### 3.7 | Orthopedics

Lower bone density may occur in individuals with developmental delay compared to neurotypical individuals. Use of anti-epileptic drugs and KD, immobility, decreased exposure to sunlight and late puberty are negative influencing factors (Srikanth et al., 2011). Low-impact fractures may occur as a result. DEXA scan is recommended

to assess bone health every 2 years depending on risk factors such as KD, non-ambulatory individuals, ketogenic diet, history of >2 fractures without clear trauma, and age of onset of puberty. In females >65 years old screening should be implemented yearly. Vitamin D supplementation, stimulating daily physical activity (especially with vertical positioning), and 15–30 min of sunlight exposure/day are advised (Lin et al., 2015).

Hip dysplasia may occur due to external rotation of the legs along with decreased tone and delayed ambulation. Standard hip screening and radiographs in the frog leg position, particularly in non-ambulatory children, should be performed, with orthopedic referral when indicated. Early PT is recommended to maintain or improve range of motion. The use of standers assist in increasing bone density.

At least 80% of children will achieve independent ambulation with an average age of onset of 3.7 years old for those with deletions (Williams et al., 2010). The gait pattern is associated with reduced step length versus cadence and continues throughout childhood despite adjustment for delayed ambulation onset (Grieco et al., 2018). Gait pattern and mobility change as individuals age; however, the commonly reported spasticity including dynamic contracture is not well characterized. Initial treatment should consist of PT and bracing to maintain range of motion and prevent static contractures. Gait analysis is recommended when considering orthopedic intervention, as many patients will develop maladaptive gait patterns which may worsen with inappropriate lengthening procedures (Larson et al., 2015). Larson reported that 10% of persons underwent tendon lengthening with varying results. Based on clinical observation, many patients develop limited ankle dorsiflexion with compensatory foot pronation and instability. This presentation can lead to a flexed knee gait pattern which is distinguished from a classic crouch gait in that passive ankle dorsiflexion is limited rather than excessive and accompanied by compensatory ankle pronation. In a sample of individuals, 62% presented with subluxed or pronated ankles (Williams et al., 2010; Zori et al., 1992), which can be treated with orthotics. If there is significant fixed angular deformity, corrective osteotomy remains controversial as recovery post-procedure is often poor. Anecdotally, botulinum toxin injections may worsen gait and should be approached with caution due to the risk of exacerbating weakness and contributing to progression of a flexed knee gait pattern.

The incidence of scoliosis in children with AS is 10–30% (Smith, 2001; Zori et al., 1992) and in adults is 30–70% (Buntinx et al., 1995; Laan et al., 1996; Prasad et al., 2018). Most curves are thoracic, but up to 20% have increased lumbar lordosis associated with trunk weakness, increased anterior pelvic tilt, and crouch gait (Beckung et al., 2004).

In adults, one study reported 21/22 patients had curves greater than 40 degrees (Guerrini et al., 2003). Standard screening with the forward bend test is appropriate for ambulatory patients, as well as orthopedic referral with radiographic monitoring. Curve assessment and treatment algorithms should follow those for typically developing children (Sewell et al., 2016). In non-ambulatory patients, earlier use of thoracolumbosacral orthoses (TLSO) should be considered for promoting bimanual manipulation and social interaction. There are conflicting data regarding an association between ambulatory status and scoliosis progression, but there appears to be a female predominance (Laan et al., 1996; Larson et al., 2015; Smith, 2001). Continued monitoring of curve progression and effect on cardiopulmonary function and quality of life should guide intervention. There is only one study that has evaluated the benefit of surgical intervention for scoliosis (Sewell et al., 2016). While there was a small but significant absolute improvement in patient reported quality of life in the surgical group, there was a 60% complication rate. While this does not negate the indication for surgical treatment, frank pre-operative risk-benefit discussions should occur.

Orthopedic concerns as individuals with AS transition to adulthood include preserving range of motion and managing body weight. It is reported that over time hip and knee flexion contractures, scoliosis, and decreased stamina develop (Grieco et al., 2018). However, 64–75% of all adults with AS are able to walk independently. Plantar flexion contractures may also develop. By 13 years of age, up to 25% of AS patients will develop significant gait abnormalities which share features of crouch gait (Bindels-de Heus et al., 2020). PT may be needed intermittently throughout life to address changes in function, gait, posture, range of motion, and strength (Table S3).

### 3.8 | Clinical trials

Published clinical trials with negative results include: levodopa (Tan et al., 2018), minocycline (Grieco et al., 2014; Ruiz-Antoran et al., 2018), and folic acid and betaine (Han et al., 2019; Keute et al., 2020; Peters et al., 2004, 2010) and betaine, metafolin, creatine, and vitamin B(12) (Bird et al., 2011). A phase 3 trial of gaboxadol (OV101) in children recently reported negative results (NCT04106557), despite promising phase 2 results in an adolescent and adult population (Bird et al., 2021). An exogenous ketone trial (Herber et al., 2020) recently showed safety and tolerability, improved stool consistency and a trend toward other benefits (Carson et al., 2021, NCT03644693). Phase I/II trials of antisense oligonucleotide therapies to activate the paternal copy of *UBE3A* are underway (NCT04428281, NCT04259281).

### 3.9 | Adults with AS and transition of care

Adults have unique challenges: decline in mobility and a more sedentary lifestyle, NEM, GERD, constipation, anxiety, and behavioral concerns. Sleep, seizures, and hyperactivity may improve (Laan et al., 1996; Larson et al., 2015; Pelc et al., 2008). Transition to adulthood requires consideration of ongoing educational and therapeutic supports including access to behavioral therapy such as ABA and AAC device support, applying for disability, state-specific waiver programs, and guardianship. An extensive IEP planning meeting should be done at 15–16 years old. There are several excellent resources such as <https://www.gottransition.org/>. Early planning includes use of community support resources (ARC and NORD) and patient support organizations (Foundation for Angelman Syndrome Therapeutics (FAST) and Angelman Syndrome Foundations (ASF)). Financial planning is critical and may include a special needs trust for the AS child/adult. Enrollment in vocational/recreational opportunities including adaptive sports or vocational training programs should be considered early. Utilization of transition clinics or the ASF clinical network for scheduled transition visits is advised. Preventive healthcare under anesthesia at generally recommended intervals is recommended.

### 3.10 | Caregiver and family health

Caregivers are at high risk for experiencing negative consequences. Continued translationally oriented research is crucial to understand the specific needs of caregivers across the lifespan. Clinical specialists and providers should be aware that stressors are associated with caregiving, including negative impacts on social networks, family dynamics, and financial security, which lead to or exacerbate mental health and physical health challenges for caregivers. Providers can offer much needed relief such as respite care, which in turn can have long-term positive impacts on the individual with AS and their support system as a whole (Adams et al., 2018; Bailey et al., 2009; Blucker et al., 2011; Buelow et al., 2006; Camfield et al., 2016; Didden et al., 2004; Falk et al., 2014; Miodrag & Peters, 2015; Murphy et al., 2007). The relationship of siblings is unique and requires family-based approaches (Love et al., 2012). Regular individualized attention to siblings as an outlet to share concerns and challenges is important. Referral to support groups locally and nationally (FAST and ASF) with connection to other families is key to create support networks. Tools for siblings may include children's books and support groups.

### ACKNOWLEDGMENT

We thank the families and individuals with Angelman syndrome for their patience and for educating us and working with us to provide the best care. We would like to acknowledge the Foundation for Angelman Syndrome Therapeutics (FAST) for their fundraising efforts that supported this grant through the Million Dollar Bike Ride.

### AUTHORS' CONTRIBUTIONS

JD worked with AA to Chair the Steering Committee, develop the methods, invited the chairs of the committees, and provided oversight of the project. JD and her team completed the systematic review of the literature with input from 2 reviewers. JD compiled the final version of the manuscript, edited, and revised the manuscript. She was the chair of the Genetics Committee and completed meetings with the group. She attended group meetings of the other committees. MN drafted, edited, and revised the neurology section and served as a member of the Neurology Committee. JS served on the Behavioral Committee and edited the manuscript. LB edited and revised the manuscript. She provided mentorship for the Genetics Committee. KGCBB chaired the General Health Committee and revised and edited the manuscript. MJV was part of the General Health Committee and revised and edited the manuscript. MYDW edited and revised the manuscript and assisted with the Neurology and Sleep Committees. CN served on the Speech and Language Development Committee and revised and edited the accompanying section. MTHR chaired the Sleep Committee and revised and edited the manuscript. BMVIK served on the Physical Therapy Committee and edited and revised the accompanying section. SE chaired the Reproductive Health Committee and revised and edited the manuscript. MD served on the Reproductive Health Committee and revised and edited the manuscript. TK chaired the Toileting Committee. GDM and AK served on the Nutrition Committee and revised and edited the accompanying section. SN served on the Neurology Committee and revised and edited the manuscript. RT served on the Neurology Committee and revised and edited the manuscript. He met with JD and AA to review the final version. DG edited and revised the Sleep section of the manuscript. CK chaired the Behavioral Health Committee. He edited and revised the manuscript. KP and NS served on the Behavioral Health Committee and edited and revised the manuscript. AS Chaired the Development Committee and revised and edited the manuscript. HH edited and revised the manuscript. AW chaired the Caregiver Health Committee and revised and edited the manuscript. CW served on the Speech and Language Development Committee and revised and edited the accompanying section. MD chaired the Speech and Language Development Committee and revised and edited this section. AT chaired the Occupational Therapy Committee and revised and

edited this section. EK and LD served on the Occupational Therapy Committee and revised and edited this section. KK chaired the Physical Therapy Committee and revised and edited the accompanying section. KA, CB, and NH served on the Physical Therapy Committee and revised and edited the accompanying section. JPG served on the Ophthalmology Committee and revised and edited the accompanying section. BLB chaired the Ophthalmology Committee and revised and edited this section. RCC served on the Orthopedics Committee and revised and edited this section. SH provided support to AA and revised and edited the manuscript. HGC chaired the Orthopedics Committee and revised and edited the accompanying section. KO served on the Caregiver Committee and revised and edited the accompanying section. ERJ served on the Steering Committee as a representative from the Angelman Syndrome Foundation and parent advocate and revised and edited the manuscript. AB served on the Steering Committee as a representative from the Foundation for Angelman Syndrome Therapeutics and parent advocate and revised and edited the manuscript. CAB served on the Genetic Committee and revised and edited the manuscript. CW served as a mentor to JD for the Genetics Committee and revised and edited the manuscript. AA was awarded funding through the Million Dollar Bike Ride. She served as part of the Neurology Committee.

## DATA AVAILABILITY STATEMENT

Data sharing not applicable – no new data generated.

## ORCID

Jessica Duis  <https://orcid.org/0000-0001-6605-1028>

## REFERENCES

- Adams, D., Clarke, S., Griffith, G., Howlin, P., Moss, J., Petty, J., Tunnicliffe, P., & Oliver, C. (2018). Mental health and well-being in mothers of children with rare genetic syndromes showing chronic challenging behavior: A cross-sectional and longitudinal study. *Am J Intellect Dev Disabil*, *123*(3), 241–253. <https://doi.org/10.1352/1944-7558-123.3.241>.
- Albanese, A., & Hopper, N. W. (2007). Suppression of menstruation in adolescents with severe learning disabilities. *Archives of Disease in Childhood*, *92*(7), 629–632. <https://doi.org/10.1136/ad.2007.115709>.
- Allen, K. D., Kuhn, B. R., DeHaai, K. A., & Wallace, D. P. (2013). Evaluation of a behavioral treatment package to reduce sleep problems in children with Angelman Syndrome. *Research in Developmental Disabilities*, *34*(1), 676–686. <https://doi.org/10.1016/j.ridd.2012.10.001>.
- Arron, K., Oliver, C., Moss, J., Berg, K., & Burbidge, C. (2011). The prevalence and phenomenology of self-injurious and aggressive behaviour in genetic syndromes. *Journal of Intellectual Disability Research*, *55*(2), 109–120. <https://doi.org/10.1111/j.1365-2788.2010.01337.x>.
- Aypar, U., Hoppman, N. L., Thorland, E. C., & Dawson, D. B. (2016). Patients with mosaic methylation patterns of the Prader-Willi/Angelman Syndrome critical region exhibit AS-like phenotypes with some PWS features. *Molecular Cytogenetics*, *9*, 26. <https://doi.org/10.1186/s13039-016-0233-0>.
- Bailey, D. B. Jr, Armstrong, F. D., Kemper, A. R., Skinner, D., & Warren, S. F. (2009). Supporting family adaptation to presymptomatic and "untreatable" conditions in an era of expanded newborn screening. *Journal of Pediatric Psychology*, *34*(6), 648–661. <https://doi.org/10.1093/jpepsy/jsn032>.
- Barry, R. J., Leitner, R. P., Clarke, A. R., & Einfeld, S. L. (2005). Behavioral aspects of Angelman syndrome: a case control study. *American Journal of Medical Genetics. Part A*, *132A*(1), 8–12. <https://doi.org/10.1002/ajmg.a.30154>.
- Beckung, E., Steffenburg, S., & Kyllerman, M. (2004). Motor impairments, neurological signs, and developmental level in individuals with Angelman syndrome. *Developmental Medicine and Child Neurology*, *46*(4), 239–243. <https://doi.org/10.1017/s0012162204000398>.
- Bergqvist, A. G. (2012). Long-term monitoring of the ketogenic diet: Do's and Don'ts. *Epilepsy Research*, *100*(3), 261–266. <https://doi.org/10.1016/j.eplepsyres.2011.05.020>.
- Bergqvist, A. G., Schall, J. I., & Stallings, V. A. (2007). Vitamin D status in children with intractable epilepsy, and impact of the ketogenic diet. *Epilepsia*, *48*(1), 66–71. <https://doi.org/10.1111/j.1528-1167.2006.00803.x>.
- Bergqvist, A. G., Schall, J. I., Stallings, V. A., & Zemel, B. S. (2008). Progressive bone mineral content loss in children with intractable epilepsy treated with the ketogenic diet. *American Journal of Clinical Nutrition*, *88*(6), 1678–1684. <https://doi.org/10.3945/ajcn.2008.26099>.
- Bindels-de Heus, K., Mous, S. E., Ten Hooven-Radstaake, M., van Iperen-Kolk, B. M., Navis, C., Rietman, A. B., Ten Hoopen, L. W., Brooks, A. S., Elgersma, Y., Moll, H. A., & Wit, M.-C. Y. (2020). An overview of health issues and development in a large clinical cohort of children with Angelman syndrome. *American Journal of Medical Genetics Part A*, *182*(1), 53–63. <https://doi.org/10.1002/ajmg.a.61382>.
- Bird, L. M., Ochoa-Lubinoff, C., Tan, W. H., Heimer, G., Melmed, R. D., Rakhit, A., Visootsak, J., During, M. J., Holcroft, C., Burdine, R. D., Kolevzon, A., & Thibert, R. L. (2021). The STARS phase 2 study: A randomized controlled trial of gaboxadol in Angelman syndrome. *Neurology*, *96*(7), e1024–e1035. <https://doi.org/10.1212/WNL.00000000000011409>.
- Bird, L. M., Tan, W. H., Bacino, C. A., Peters, S. U., Skinner, S. A., Anselm, I., Barbieri-Welge, R., Bauer-Carlin, A., Gentile, J. K., Glaze, D. G., Horowitz, L. T., Mohan, K. N., Nespeca, M. P., Sahoo, T., Sarco, D., Waisbren, S. E., & Beaudet, A. L. (2011). A therapeutic trial of pro-methylation dietary supplements in Angelman syndrome. *American Journal of Medical Genetics. Part A*, *155A*(12), 2956–2963. <https://doi.org/10.1002/ajmg.a.34297>.
- Blucker, R. T., Elliott, T. R., Warren, R. H., & Warren, A. M. (2011). Psychological adjustment of family caregivers of children who have severe neurodisabilities that require chronic respiratory management. *Fam Syst Health*, *29*(3), 215–231. <https://doi.org/10.1037/a0025146>.
- Braam, W., Didden, R., Smits, M. G., & Curfs, L. M. (2008). Melatonin for chronic insomnia in Angelman syndrome: a randomized placebo-controlled trial. *Journal of Child Neurology*, *23*(6), 649–654. <https://doi.org/10.1177/0883073808314153>.
- Bruni, O., Ferri, R., D'Agostino, G., Miano, S., Roccella, M., & Elia, M. (2004). Sleep disturbances in Angelman syndrome: a

- questionnaire study. *Brain and Development*, 26(4), 233–240. [https://doi.org/10.1016/S0387-7604\(03\)00160-8](https://doi.org/10.1016/S0387-7604(03)00160-8).
- Buelow, J. M., McNelis, A., Shore, C. P., & Austin, J. K. (2006). Stressors of parents of children with epilepsy and intellectual disability. *Journal of Neuroscience Nursing*, 38(3), 147–155. <https://doi.org/10.1097/01376517-200606000-00003>.
- Buntinx, I. M., Hennekam, R. C., Brouwer, O. F., Stroink, H., Beuten, J., Mangelschots, K., & Fryns, J. P. (1995). Clinical profile of Angelman syndrome at different ages. *American Journal of Medical Genetics*, 56(2), 176–183. <https://doi.org/10.1002/ajmg.1320560213>.
- Camfield, P., Camfield, C., & Nolan, K. (2016). Helping Families cope with the severe stress of dravet syndrome. *Canadian Journal of Neurological Sciences*, 43(Suppl 3), S9–S12. <https://doi.org/10.1017/cjn.2016.248>.
- Camprubi, C., Coll, M. D., Villatoro, S., Gabau, E., Kamli, A., Martinez, M. J., Poyatos, D., & Guitart, M. (2007). Imprinting center analysis in Prader-Willi and Angelman syndrome patients with typical and atypical phenotypes. *European Journal of Medical Genetics*, 50(1), 11–20. <https://doi.org/10.1016/j.ejmg.2006.10.001>.
- Caraballo, R. H., Cersosimo, R. O., Espeche, A., Arroyo, H. A., & Fejerman, N. (2007). Myoclonic status in nonprogressive encephalopathies: Study of 29 cases. *Epilepsia*, 48(1), 107–113. <https://doi.org/10.1111/j.1528-1167.2006.00902.x>.
- Carson, R. P., Bird, L., Childers, A. K., Wheeler, F., & Duis, J. (2019). Preserved expressive language as a phenotypic determinant of Mosaic Angelman Syndrome. *Molecular Genetics & Genomic Medicine*, 7(9), e837. <https://doi.org/10.1002/mgg3.837>.
- Carson, R. P., Herber, D. L., Pan, Z., Phibbs, F., Key, A. P., Gouelle, A., Ergish, P., Armour, E. A., Patel, S., & Duis, J. (2021). Nutritional formulation for patients with angelman syndrome: A randomized, double-blind, placebo-controlled study of exogenous ketones. *The Journal of Nutrition*, nxab284. <https://doi.org/10.1093/jn/nxab284>. Online ahead of print.
- Casara, G. L., Vecchi, M., Boniver, C., Drigo, P., Baccichetti, C., Artifoni, L., Franzoni, E., & Marchiani, V. (1995). Electroclinical diagnosis of Angelman syndrome: a study of 7 cases. *Brain Dev*, 17(1), 64–68. [https://doi.org/10.1016/0387-7604\(94\)00104-6](https://doi.org/10.1016/0387-7604(94)00104-6).
- Conant, K. D., Thibert, R. L., & Thiele, E. A. (2009). Epilepsy and the sleep-wake patterns found in Angelman syndrome. *Epilepsia*, 50(11), 2497–2500. <https://doi.org/10.1111/j.1528-1167.2009.02109.x>.
- Copping, N. A., Christian, S. G. B., Ritter, D. J., Islam, M. S., Buscher, N., Zolkowska, D., Pride, M. C., Berg, E. L., LaSalle, J. M., Ellegood, J., Lerch, J. P., Reiter, L. T., Silverman, J. L., & Dindot, S. V. (2017). Neuronal overexpression of Ube3a isoform 2 causes behavioral impairments and neuroanatomical pathology relevant to 15q11.2-q13.3 duplication syndrome. *Human Molecular Genetics*, 26(20), 3995–4010. <https://doi.org/10.1093/hmg/ddx289>.
- Dagli, A., Buiting, K., & Williams, C. A. (2012). Molecular and clinical aspects of Angelman Syndrome. *Mol Syndromol*, 2(3–5), 100–112. <https://doi.org/10.1159/000328837>.
- Dan, B., Boyd, S. G., Pelc, K., & Cheron, G. (2007). Lamotrigine effect on GABA transmission in Angelman syndrome? *Epilepsia*, 48(8), 1634. [https://doi.org/10.1111/j.1528-1167.2007.01178\\_5.x](https://doi.org/10.1111/j.1528-1167.2007.01178_5.x).
- Dickinson, A. J., Fielder, A. R., Young, I. D., & Duckett, D. P. (1990). Ocular findings in Angelman's (happy puppet) syndrome. *Ophthalmic Paediatr Genet*, 11(1), 1–6. <https://doi.org/10.3109/13816819009012942>.
- Didden, R., Korzilius, H., Smits, M. G., & Curfs, L. M. (2004). Sleep problems in individuals with Angelman syndrome. *American Journal of Mental Retardation*, 109(4), 275–284. [https://doi.org/10.1352/0895-8017\(2004\)109<275:SPIIWS>2.0.CO;2](https://doi.org/10.1352/0895-8017(2004)109<275:SPIIWS>2.0.CO;2).
- Dindot, S. V., Antalffy, B. A., Bhattacharjee, M. B., & Beaudet, A. L. (2008). The Angelman syndrome ubiquitin ligase localizes to the synapse and nucleus, and maternal deficiency results in abnormal dendritic spine morphology. *Human Molecular Genetics*, 17(1), 111–118. <https://doi.org/10.1093/hmg/ddm288>.
- Dosier, L. B. M., Vaughn, B. V., & Fan, Z. (2017). Sleep disorders in childhood neurogenetic disorders. *Children (Basel)*, 4(9), 82. <https://doi.org/10.3390/children4090082>.
- Egan, M., Farrell, K., Hoey, E., McGuire, B. E., & Lydon, H. K. (2020). Interventions to improve sleep for individuals with Angelman syndrome: A systematic review. *Research in Developmental Disabilities*, 97, 103554. <https://doi.org/10.1016/j.ridd.2019.103554>.
- Errando, C. L., Murcia, M., Gimeno, A., & Herrera, R. (2007). Anesthesia in a patient with Angelman syndrome. *Revista Espanola De Anestesiologia Y Reanimacion*, 54(9), 566–569.
- Evangelidou, A., Doulioglou, V., Haidopoulou, K., Aptouramani, M., Spilioti, M., & Varlamis, G. (2010). Ketogenic diet in a patient with Angelman syndrome. *Pediatrics International*, 52(5), 831–834. <https://doi.org/10.1111/j.1442-200X.2010.03118.x>.
- Fairbrother, L. C., Cytrynbaum, C., Boutis, P., Buiting, K., Weksberg, R., & Williams, C. (2015). Mild Angelman syndrome phenotype due to a mosaic methylation imprinting defect. *American Journal of Medical Genetics Part A*, 167(7), 1565–1569. <https://doi.org/10.1002/ajmg.a.37058>.
- Falk, N. H., Norris, K., & Quinn, M. G. (2014). The factors predicting stress, anxiety and depression in the parents of children with autism. *Journal of Autism and Developmental Disorders*, 44(12), 3185–3203. <https://doi.org/10.1007/s10803-014-2189-4>.
- Fridman, C., Varela, M. C., Nicholls, R. D., & Koiffmann, C. P. (1998). Unusual clinical features in an Angelman syndrome patient with uniparental disomy due to a translocation 15q15q. *Clinical Genetics*, 54(4), 303–308. <https://doi.org/10.1034/j.1399-0004.1998.5440407.x>.
- Fujikawa, Y., Sugai, K., Hanaoka, S., Fukumizu, M., Sasaki, M., & Kaga, M. (2003). Three cases with severe motor and intellectual disabilities presenting the severest condition caused by prolonged non-convulsive status epilepticus. *No to Hattatsu*, 35(1), 43–48.
- Galvan-Manso, M., Campistol, J., Monros, E., Poo, P., Vernet, A. M., Pineda, M., Sans, A., Colomer, J., Conill, J. J., & Sanmarti, F. X. (2002). Angelman syndrome: Physical characteristics and behavioural phenotype in 37 patients with confirmed genetic diagnosis. *Revista de Neurologia*, 35(5), 425–429.
- Gardner, J. C., Turner, C. S., & Ririe, D. G. (2008). Vagal hypertonía and anesthesia in Angelman syndrome. *Paediatric Anaesthesia*, 18(4), 348–349. <https://doi.org/10.1111/j.1460-9592.2008.02487.x>.
- Gentile, J. K., Tan, W. H., Horowitz, L. T., Bacino, C. A., Skinner, S. A., Barbieri-Welge, R., Bauer-Carlin, A., Beaudet, A. L., Bichell, T. J., Lee, H. S., Sahoo, T., Waisbren, S. E., Bird, L. M., & Peters, S. U. (2010). A neurodevelopmental survey of Angelman syndrome with genotype-phenotype correlations. *Journal of Developmental and Behavioral Pediatrics*, 31(7), 592–601. <https://doi.org/10.1097/DBP.0b013e3181ee408e>.

- Getz, M., Hutzler, Y., & Vermeer, A. (2006). Effects of aquatic interventions in children with neuromotor impairments: A systematic review of the literature. *Clinical Rehabilitation*, 20(11), 927–936. <https://doi.org/10.1177/0269215506070693>.
- Glassman, L. W., Grocott, O. R., Kunz, P. A., Larson, A. M., Zella, G., Ganguli, K., & Thibert, R. L. (2017). Prevalence of gastrointestinal symptoms in Angelman syndrome. *American Journal of Medical Genetics. Part A*, 173(10), 2703–2709. <https://doi.org/10.1002/ajmg.a.38401>.
- Gonzalez, L. M., Martinez, C., Bori, Y. F. I., & Suso-Vergara, S. (2017). Factors in the efficacy, safety, and impact on quality of life for treatment of drooling with botulinum toxin type A in patients with cerebral palsy. *American Journal of Physical Medicine & Rehabilitation*, 96(2), 68–76. <https://doi.org/10.1097/PHM.0000000000000525>.
- Grieco, J. C., Ciarlone, S. L., Gieron-Korthals, M., Schoenberg, M. R., Smith, A. G., Philpot, R. M., Heussler, H. S., Banko, J. L., & Weeber, E. J. (2014). An open-label pilot trial of minocycline in children as a treatment for Angelman syndrome. *BMC Neurology*, 14, 232. <https://doi.org/10.1186/s12883-014-0232-x>.
- Grieco, J. C., Gouelle, A., & Weeber, E. J. (2018). Identification of spatiotemporal gait parameters and pressure-related characteristics in children with Angelman syndrome: A pilot study. *Journal of Applied Research in Intellectual Disabilities*, 31(6), 1219–1224. <https://doi.org/10.1111/jar.12462>.
- Grocott, O. R., Herrington, K. S., Pfeifer, H. H., Thiele, E. A., & Thibert, R. L. (2017). Low glycemic index treatment for seizure control in Angelman syndrome: A case series from the Center for Dietary Therapy of Epilepsy at the Massachusetts General Hospital. *Epilepsy & Behavior*, 68, 45–50. <https://doi.org/10.1016/j.yebeh.2016.12.018>.
- Groesbeck, D. K., Bluml, R. M., & Kossoff, E. H. (2006). Long-term use of the ketogenic diet in the treatment of epilepsy. *Developmental Medicine and Child Neurology*, 48(12), 978–981. <https://doi.org/10.1017/S0012162206002143>.
- Gueita-Rodriguez, J., Ogonowska-Slownik, A., Morgulec-Adamowicz, N., Martin-Prades, M. L., Cuenca-Zaldivar, J. N., & Palacios-Cena, D. (2021). Effects of aquatic therapy for children with autism spectrum disorder on social competence and quality of life: A mixed methods study. *International Journal of Environmental Research and Public Health*, 18(6), <https://doi.org/10.3390/ijerph18063126>.
- Guerrini, R., Carrozzo, R., Rinaldi, R., & Bonanni, P. (2003). Angelman syndrome: Etiology, clinical features, diagnosis, and management of symptoms. *Paediatric Drugs*, 5(10), 647–661. <https://doi.org/10.2165/00148581-200305100-00001>.
- Han, J., Bichell, T. J., Golden, S., Anselm, I., Waisbren, S., Bacino, C. A., Peters, S. U., Bird, L. M., & Kimonis, V. (2019). A placebo-controlled trial of folic acid and betaine in identical twins with Angelman syndrome. *Orphanet Journal of Rare Diseases*, 14(1), 232. <https://doi.org/10.1186/s13023-019-1216-0>.
- Hanzlik, E., Klinger, S. A., Carson, R., & Duis, J. (2020). Mirtazapine for sleep disturbances in Angelman syndrome: a retrospective chart review of 8 pediatric cases. *Journal of Clinical Sleep Medicine*, 16(4), 591–595. <https://doi.org/10.5664/jcsm.8284>.
- Herber, D. L., Weeber, E. J., D'Agostino, D. P., & Duis, J. (2020). Evaluation of the safety and tolerability of a nutritional Formulation in patients with ANgelman Syndrome (FANS): Study protocol for a randomized controlled trial. *Trials*, 21(1), 60. <https://doi.org/10.1186/s13063-019-3996-x>.
- Hillman, P. R., Christian, S. G. B., Doan, R., Cohen, N. D., Konganti, K., Douglas, K., Wang, X., Samollow, P. B., & Dindot, S. V. (2017). Genomic imprinting does not reduce the dosage of UBE3A in neurons. *Epigenetics Chromatin*, 10, 27. <https://doi.org/10.1186/s13072-017-0134-4>.
- Huo, R., Burden, S. K., Hoyt, C. S., & Good, W. V. (1999). Chronic cortical visual impairment in children: aetiology, prognosis, and associated neurological deficits. *British Journal of Ophthalmology*, 83(6), 670–675. <https://doi.org/10.1136/bjo.83.6.670>.
- Hylkema, T., & Vlaskamp, C. (2009). Significant improvement in sleep in people with intellectual disabilities living in residential settings by non-pharmaceutical interventions. *Journal of Intellectual Disability Research*, 53(8), 695–703. <https://doi.org/10.1111/j.1365-2788.2009.01177.x>.
- Iii, S. A. (2015). Sleep assessment methods. *Monographs of the Society for Research in Child Development*, 80(1), 33–48. <https://doi.org/10.1111/mono.12143>.
- Kaskowitz, A. P., Dendrinis, M., Murray, P. J., Quint, E. H., & Ernst, S. (2016). The effect of menstrual issues on young women with Angelman syndrome. *Journal of Pediatric and Adolescent Gynecology*, 29(4), 348–352. <https://doi.org/10.1016/j.jpjg.2015.12.004>.
- Kawano, O., Egawa, K., & Shiraishi, H. (2020). Perampanel for nonepileptic myoclonus in Angelman syndrome. *Brain and Development*, 42(5), 389–392. <https://doi.org/10.1016/j.braindev.2020.02.007>.
- Kemper, M., Alonso Perez, J., Gomez Curiel, J. F., Fernandez Alguacil, A., & de la Marenco Fuente, M. L. (2010). General anesthesia in a patient with Angelman syndrome. *Revista Espanola De Anestesiologia Y Reanimacion*, 57(2), 126–127. [https://doi.org/10.1016/s0034-9356\(10\)70181-x](https://doi.org/10.1016/s0034-9356(10)70181-x).
- Keute, M., Miller, M. T., Krishnan, M. L., Sathwani, A., Chamberlain, S., Thibert, R. L., Tan, W. H., Bird, L. M., & Hipp, J. F. (2020). Angelman syndrome genotypes manifest varying degrees of clinical severity and developmental impairment. *Molecular Psychiatry*, 26(7), 3625–3633. <https://doi.org/10.1038/s41380-020-0858-6>.
- Khan, N., Cabo, R., Tan, W. H., Tayag, R., & Bird, L. M. (2019). Healthcare burden among individuals with Angelman syndrome: Findings from the Angelman Syndrome Natural History Study. *Molecular Genetics & Genomic Medicine*, 7(7), e00734. <https://doi.org/10.1002/mgg3.734>.
- Kim, B. S., Yeo, J. S., & Kim, S. O. (2010). Anesthesia of a dental patient with Angelman syndrome -A case report. *Korean Journal of Anesthesiology*, 58(2), 207–210. <https://doi.org/10.4097/kjae.2010.58.2.207>.
- Kirkilionis, A. J., Chudley, A. E., Gregory, C. A., & Hamerton, J. L. (1991). Molecular and clinical overlap of Angelman and Prader-Willi syndrome phenotypes. *American Journal of Medical Genetics*, 40(4), 454–459. <https://doi.org/10.1002/ajmg.1320400416>.
- Korff, C. M., Kelley, K. R., & Nordli, D. R. Jr (2005). Notched delta, phenotype, and Angelman syndrome. *Journal of Clinical Neurophysiology*, 22(4), 238–243. <https://doi.org/10.1097/01.wnp.0000167930.90824.0f>.
- Kossoff, E. H., Pyzik, P. L., Furth, S. L., Hladky, H. D., Freeman, J. M., & Vining, E. P. (2002). Kidney stones, carbonic anhydrase inhibitors, and the ketogenic diet. *Epilepsia*, 43(10), 1168–1171. <https://doi.org/10.1046/j.1528-1157.2002.11302.x>.

- Kossoff, E. H., Zupec-Kania, B. A., Auvin, S., Ballaban-Gil, K. R., Christina Bergqvist, A. G., Blackford, R., Buchhalter, J. R., Caraballo, R. H., Cross, J. H., Dahlin, M. G., Donner, E. J., Guzel, O., Jehle, R. S., Klepper, J., Kang, H. C., Lambrechts, D. A., Liu, Y. M. C., Nathan, J. K., Nordli, D. R. Jr, ... Matthew's, F. (2018). Practice Committee of the Child Neurology S. Optimal clinical management of children receiving dietary therapies for epilepsy: Updated recommendations of the International Ketogenic Diet Study Group. *Epilepsia Open*, 3(2), 175–192. <https://doi.org/10.1002/epi4.12225>.
- Kwiterovich, P. O. Jr, Vining, E. P., Pyzik, P., Skolasky, R. Jr, & Freeman, J. M. (2003). Effect of a high-fat ketogenic diet on plasma levels of lipids, lipoproteins, and apolipoproteins in children. *JAMA*, 290(7), 912–920. <https://doi.org/10.1001/jama.290.7.912>.
- Laan, L. A., den Boer, A. T., Hennekam, R. C., Renier, W. O., & Brouwer, O. F. (1996). Angelman syndrome in adulthood. *American Journal of Medical Genetics*, 66(3), 356–360. [https://doi.org/10.1002/\(SICI\)1096-8628\(19961218\)66:3<356:AID-AJMG21>3.0.CO;2-K](https://doi.org/10.1002/(SICI)1096-8628(19961218)66:3<356:AID-AJMG21>3.0.CO;2-K).
- Laan, L. A., Renier, W. O., Arts, W. F., Buntinx, I. M., Burgt, I. J. A. M. vd, Stroink, H., Beuten, J., Zwinderman, K. H., Dijk, J. G., & Brouwer, O. F. (1997). Evolution of epilepsy and EEG findings in Angelman syndrome. *Epilepsia*, 38(2), 195–199. <https://doi.org/10.1111/j.1528-1157.1997.tb01097.x>.
- Larson, A. M., Shinnick, J. E., Shaaya, E. A., Thiele, E. A., & Thibert, R. L. (2015). Angelman syndrome in adulthood. *American Journal of Medical Genetics Part A*, 167A(2), 331–344. <https://doi.org/10.1002/ajmg.a.36864>.
- Lin, L. P., Hsu, S. W., Yao, C. H., Lai, W. J., Hsu, P. J., Wu, J. L., Chu, C. M., & Lin, J. D. (2015). Risk for osteopenia and osteoporosis in institution-dwelling individuals with intellectual and/or developmental disabilities. *Research in Developmental Disabilities*, 36C, 108–113. <https://doi.org/10.1016/j.ridd.2014.09.022>.
- Love, V., Richters, L., Didden, R., Korzilius, H., & Machalicek, W. (2012). Sibling relationships in individuals with Angelman syndrome: A comparative study. *Developmental Neurorehabilitation*, 15(2), 84–90. <https://doi.org/10.3109/17518423.2011.637972>.
- Mah, M. L., Wallace, D. K., & Powell, C. M. (2000). Ophthalmic manifestations of Angelman syndrome. *Journal of American Association for Pediatric Ophthalmology and Strabismus*, 4(4), 248–249. <https://doi.org/10.1067/mpa.2000.105305>.
- Makris, A., Kalampokini, A., & Tsagkaris, M. (2018). Anesthesia considerations for an adult patient with Angelman syndrome. *Journal of Clinical Anesthesia*, 46, 65–66. <https://doi.org/10.1016/j.jclinane.2018.01.027>.
- Matsumoto, A., Kumagai, T., Miura, K., Miyazaki, S., Hayakawa, C., & Yamanaka, T. (1992). Epilepsy in Angelman syndrome associated with chromosome 15q deletion. *Epilepsia*, 33(6), 1083–1090. <https://doi.org/10.1111/j.1528-1157.1992.tb01763.x>.
- Matusiak-Wieczorek, E., Malachowska-Sobieska, M., & Synder, M. (2016). Influence of hippotherapy on body balance in the sitting position among children with cerebral palsy. *Ortopedia Traumatologia Rehabilitacja*, 18(2), 165–175. <https://doi.org/10.5604/15093492.1205024>.
- McManus, B. M., & Kotelchuck, M. (2007). The effect of aquatic therapy on functional mobility of infants and toddlers in early intervention. *Pediatric Physical Therapy*, 19(4), 275–282. <https://doi.org/10.1097/PEP.0b013e3181575190>.
- Mertz, L. G., Christensen, R., Vogel, I., Hertz, J. M., Nielsen, K. B., Gronskov, K., & Ostergaard, J. R. (2013). Angelman syndrome in Denmark. Birth incidence, genetic findings, and age at diagnosis. *American Journal of Medical Genetics Part A*, 161A(9), 2197–2203. <https://doi.org/10.1002/ajmg.a.36058>.
- Miano, S., Bruni, O., Elia, M., Musumeci, S. A., Verrillo, E., & Ferri, R. (2005). Sleep breathing and periodic leg movement pattern in Angelman Syndrome: A polysomnographic study. *Clinical Neurophysiology*, 116(11), 2685–2692. <https://doi.org/10.1016/j.clinph.2005.08.005>.
- Miano, S., Bruni, O., Leuzzi, V., Elia, M., Verrillo, E., & Ferri, R. (2004). Sleep polygraphy in Angelman syndrome. *Clinical Neurophysiology*, 115(4), 938–945. <https://doi.org/10.1016/j.clinph.2003.11.004>.
- Micheletti, S., Palestra, F., Martelli, P., Accorsi, P., Galli, J., Giordano, L., Trebeschi, V., & Fazzi, E. (2016). Neurodevelopmental profile in Angelman syndrome: More than low intelligence quotient. *Italian Journal of Pediatrics*, 42(1), 91. <https://doi.org/10.1186/s13052-016-0301-4>.
- Michieletto, P., Bonanni, P., & Pensiero, S. (2011). Ophthalmic findings in Angelman syndrome. *Journal of American Association for Pediatric Ophthalmology and Strabismus*, 15(2), 158–161. <https://doi.org/10.1016/j.jaaapos.2010.12.013>.
- Miodrag, N., & Peters, S. (2015). Parent stress across molecular subtypes of children with Angelman syndrome. *Journal of Intellectual Disability Research*, 59(9), 816–826. <https://doi.org/10.1111/jir.12195>.
- Moller, E., Daugaard, D., Holm, O., Winge, K., Bardow, A., Lykkeaa, J., Belhage, B., & Bakke, M. (2015). Repeated treatments of drooling with botulinum toxin B in neurology. *Acta Neurologica Scandinavica*, 131(1), 51–57. <https://doi.org/10.1111/ane.12309>.
- Mortimer, R., Privopoulos, M., & Kumar, S. (2014). The effectiveness of hydrotherapy in the treatment of social and behavioral aspects of children with autism spectrum disorders: a systematic review. *Journal of Multidisciplinary Healthcare*, 7, 93–104. <https://doi.org/10.2147/JMDH.S55345>.
- Moss, J., & Howlin, P. (2009). Autism spectrum disorders in genetic syndromes: implications for diagnosis, intervention and understanding the wider autism spectrum disorder population. *Journal of Intellectual Disability Research*, 53(10), 852–873. <https://doi.org/10.1111/j.1365-2788.2009.01197.x>.
- Murphy, N. A., Christian, B., Caplin, D. A., & Young, P. C. (2007). The health of caregivers for children with disabilities: caregiver perspectives. *Child: Care, Health and Development*, 33(2), 180–187. <https://doi.org/10.1111/j.1365-2214.2006.00644.x>.
- Nolt, D. H., Mott, J. M., & Lopez, W. L. (2003). Assessment of anti-convulsant effectiveness and safety in patients with Angelman's syndrome using an Internet questionnaire. *American Journal of Health System Pharmacy*, 60(24), 2583–2587. <https://doi.org/10.1093/ajhp/60.24.2583>.
- Norderyd, J., Graf, J., Marcusson, A., Nilsson, K., Sjostrand, E., Steinwall, G., Arleskog, E., & Bagesund, M. (2017). Sublingual administration of atropine eyedrops in children with excessive drooling - a pilot study. *International Journal of Paediatric Dentistry*, 27(1), 22–29. <https://doi.org/10.1111/ipd.12219>.
- Nordgarden, H., Osterhus, I., Moystad, A., Asten, P., Johnsen, U. L., Storhaug, K., & Loven, J. O. (2012). Drooling: Are botulinum toxin injections into the major salivary glands a good treatment

- option? *Journal of Child Neurology*, 27(4), 458–464. <https://doi.org/10.1177/08830738111419365>.
- Ohtsuka, Y., Kobayashi, K., Yoshinaga, H., Ogino, T., Ohmori, I., Ogawa, K., & Oka, E. (2005). Relationship between severity of epilepsy and developmental outcome in Angelman syndrome. *Brain and Development*, 27(2), 95–100. <https://doi.org/10.1016/j.braindev.2003.09.015>.
- Ostergaard, J. R., & Balslev, T. (2001). Efficacy of different antiepileptic drugs in children with Angelman syndrome associated with 15q11-13 deletion: the Danish experience. *Developmental Medicine and Child Neurology*, 43(10), 718–719. <https://doi.org/10.1017/s0012162201001293>.
- Paprocka, J., Kijonka, M., Wojcieszek, P., Pecka, M., Emich-Widera, E., & Sokol, M. (2017). Melatonin and Angelman syndrome: Implications and mathematical model of diurnal secretion. *Int J Endocrinol*, 2017, 5853167. <https://doi.org/10.1155/2017/5853167>.
- Park, E. S., Rha, D. W., Shin, J. S., Kim, S., & Jung, S. (2014). Effects of hippotherapy on gross motor function and functional performance of children with cerebral palsy. *Yonsei Medical Journal*, 55(6), 1736–1742. <https://doi.org/10.3349/ymj.2014.55.6.1736>.
- Patil, J. J., & Sindhakar, S. (2008). Angelman syndrome and anesthesia. *Paediatric Anaesthesia*, 18(12), 1219–1220. <https://doi.org/10.1111/j.1460-9592.2008.02702.x>.
- Pelc, K., Boyd, S. G., Cheron, G., & Dan, B. (2008). Epilepsy in Angelman syndrome. *Seizure*, 17(3), 211–217. <https://doi.org/10.1016/j.seizure.2007.08.004>.
- Pena, A. H., Cahill, A. M., Gonzalez, L., Baskin, K. M., Kim, H., & Towbin, R. B. (2009). Botulinum toxin A injection of salivary glands in children with drooling and chronic aspiration. *Journal of Vascular and Interventional Radiology*, 20(3), 368–373. <https://doi.org/10.1016/j.jvir.2008.11.011>.
- Peters, S. U., Beaudet, A. L., Madduri, N., & Bacino, C. A. (2004). Autism in Angelman syndrome: Implications for autism research. *Clinical Genetics*, 66(6), 530–536. <https://doi.org/10.1111/j.1399-0004.2004.00362.x>.
- Peters, S. U., Bird, L. M., Kimonis, V., Glaze, D. G., Shinawi, L. M., Bichell, T. J., Barbieri-Welge, R., Nespeca, M., Anselm, I., Waisbren, S., Sanborn, E., Sun, Q., O'Brien, W. E., Beaudet, A. L., & Bacino, C. A. (2010). Double-blind therapeutic trial in Angelman syndrome using betaine and folic acid. *American Journal of Medical Genetics Part A*, 152A(8), 1994–2001. <https://doi.org/10.1002/ajmg.a.33509>.
- Pollack, S. F., Grocott, O. R., Parkin, K. A., Larson, A. M., & Thibert, R. L. (2018). Myoclonus in Angelman syndrome. *Epilepsy & Behavior*, 82, 170–174. <https://doi.org/10.1016/j.yebeh.2018.02.006>.
- Prasad, A., Grocott, O., Parkin, K., Larson, A., & Thibert, R. L. (2018). Angelman syndrome in adolescence and adulthood: A retrospective chart review of 53 cases. *American Journal of Medical Genetics. Part A*, 176(6), 1327–1334. <https://doi.org/10.1002/ajmg.a.38694>.
- Radstaake, M., Didden, R., Giesbers, S., Korzilius, H., Peters-Scheffer, N., Lang, R., von Gontard, A., & Curfs, L. M. (2013). Incontinence in individuals with Angelman syndrome: A comparative study. *Research in Developmental Disabilities*, 34(11), 4184–4193. <https://doi.org/10.1016/j.ridd.2013.09.007>.
- Radstaake, M., Didden, R., Peters-Scheffers, N., Moore, D. W., Anderson, A., & Curfs, L. M. (2014). Toilet training in individuals with Angelman syndrome: A case series. *Dev Neurorehabil*, 17(4), 243–250. <https://doi.org/10.3109/17518423.2013.783140>.
- Ranasinghe, J. C., Chandradasa, D., Fernando, S., Kodithuwakku, U., Mandawala, D. E., & Dissanayake, V. H. (2015). Angelman syndrome presenting with a rare seizure type in a patient with 15q11.2 deletion: A case report. *Journal of Medical Case Reports*, 9(1), 142. <https://doi.org/10.1186/s13256-015-0622-8>.
- Reid, S. M., Walstab, J. E., Chong, D., Westbury, C., & Reddihough, D. S. (2013). Secondary effects of botulinum toxin injections into salivary glands for the management of pediatric drooling. *Journal of Craniofacial Surgery*, 24(1), 28–33. <https://doi.org/10.1097/SCS.0b013e31827102a0>.
- Rosado Fuentes, E., Martinez Navas, A., Laguillo Cadenas, J. L., & Echevarria, M. M. (2009). Spinal anesthesia in a patient with Angelman syndrome. *Revista Espanola De Anestesiologia Y Reanimacion*, 56(1), 56–57. [https://doi.org/10.1016/s0034-9356\(09\)70326-3](https://doi.org/10.1016/s0034-9356(09)70326-3).
- Rufa, A., Dotti, M. T., Orrico, A., Battisti, C., Carletto, F., & Federico, A. (2003). Retinochoroidal atrophy in two adult patients with Angelman syndrome. *American Journal of Medical Genetics. Part A*, 122A(2), 155–158. <https://doi.org/10.1002/ajmg.a.20217>.
- Ruiz-Antoran, B., Sancho-Lopez, A., Cazorla-Calleja, R., Lopez-Pajaro, L. F., Leiva, A., Iglesias-Escalera, G., Marin-Serrano, M. E., Rincon-Ortega, M., Lara-Herguedas, J., Rossignoli-Palomeque, T., Valiente-Rodriguez, S., Gonzalez-Marques, J., Roman-Riechmann, E., & Avendano-Sola, C. (2018). A randomized placebo controlled clinical trial to evaluate the efficacy and safety of minocycline in patients with Angelman syndrome (A-MANECE study). *Orphanet Journal of Rare Diseases*, 13(1), 144. <https://doi.org/10.1186/s13023-018-0891-6>.
- Sadhvani, A., Willen, J. M., LaVallee, N., Stepanians, M., Miller, H., Peters, S. U., Barbieri-Welge, R. L., Horowitz, L. T., Noll, L. M., Hundley, R. J., Bird, L. M., & Tan, W. H. (2019). Maladaptive behaviors in individuals with Angelman syndrome. *American Journal of Medical Genetics. Part A*, 179(6), 983–992. <https://doi.org/10.1002/ajmg.a.61140>.
- Sahoo, T., Bacino, C. A., German, J. R., Shaw, C. A., Bird, L. M., Kimonis, V., Anselm, I., Waisbren, S., Beaudet, A. L., & Peters, S. U. (2007). Identification of novel deletions of 15q11q13 in Angelman syndrome by array-CGH: molecular characterization and genotype-phenotype correlations. *European Journal of Human Genetics*, 15(9), 943–949. <https://doi.org/10.1038/sj.ejhg.5201859>.
- Sewell, M. D., Wallace, C., Gibson, A., Noordeen, H., Tucker, S., Molloy, S., & Lehovsky, J. (2016). A retrospective review to assess whether spinal fusion and scoliosis correction improved activity and participation for children with Angelman syndrome. *Developmental Neurorehabilitation*, 19(5), 315–320. <https://doi.org/10.3109/17518423.2014.980524>.
- Shaaya, E. A., Grocott, O. R., Laing, O., & Thibert, R. L. (2016). Seizure treatment in Angelman syndrome: A case series from the Angelman syndrome clinic at Massachusetts General Hospital. *Epilepsy & Behavior*, 60, 138–141. <https://doi.org/10.1016/j.yebeh.2016.04.030>.
- Sidorov, M. S., Deck, G. M., Dolatshahi, M., Thibert, R. L., Bird, L. M., Chu, C. J., & Philpot, B. D. (2017). Delta rhythmicity is a reliable EEG biomarker in Angelman syndrome: a parallel mouse and human analysis. *Journal of Neurodevelopmental Disorders*, 9, 17. <https://doi.org/10.1186/s11689-017-9195-8>.



- Smith, J. C. (2001). Angelman syndrome: Evolution of the phenotype in adolescents and adults. *Developmental Medicine and Child Neurology*, 43(7), 476–480. <https://doi.org/10.1017/s0012162201000871>.
- Srikanth, R., Cassidy, G., Joiner, C., & Teeluckdhar, S. (2011). Osteoporosis in people with intellectual disabilities: A review and a brief study of risk factors for osteoporosis in a community sample of people with intellectual disabilities. *Journal of Intellectual Disability Research*, 55(1), 53–62. <https://doi.org/10.1111/j.1365-2788.2010.01346.x>.
- Steffenburg, S., Gillberg, C. L., Steffenburg, U., & Kyllerman, M. (1996). Autism in Angelman syndrome: A population-based study. *Pediatric Neurology*, 14(2), 131–136. [https://doi.org/10.1016/0887-8994\(96\)00011-2](https://doi.org/10.1016/0887-8994(96)00011-2).
- Strachan, R., Shaw, R., Burrow, C., Horsler, K., Allen, D., & Oliver, C. (2009). Experimental functional analysis of aggression in children with Angelman syndrome. *Research in Developmental Disabilities*, 30(5), 1095–1106. <https://doi.org/10.1016/j.ridd.2009.03.005>.
- Sugimoto, T., Yasuhara, A., Ohta, T., Nishida, N., Saitoh, S., Hamabe, J., & Niikawa, N. (1992). Angelman syndrome in three siblings: Characteristic epileptic seizures and EEG abnormalities. *Epilepsia*, 33(6), 1078–1082. <https://doi.org/10.1111/j.1528-1157.1992.tb01762.x>.
- Summers, J. (2012). Neurodevelopmental outcomes in children with Angelman syndrome after 1 year of behavioural intervention. *Developmental Neurorehabilitation*, 15(4), 239–252. <https://doi.org/10.3109/17518423.2012.676101>.
- Takaesu, Y., Komada, Y., & Inoue, Y. (2012). Melatonin profile and its relation to circadian rhythm sleep disorders in Angelman syndrome patients. *Sleep Medicine*, 13(9), 1164–1170. <https://doi.org/10.1016/j.sleep.2012.06.015>.
- Tan, W. H., Bacino, C. A., Skinner, S. A., Anselm, I., Barbieri-Welge, R., Bauer-Carlin, A., Beaudet, A. L., Bichell, T. J., Gentile, J. K., Glaze, D. G., Horowitz, L. T., Kothare, S. V., Lee, H. S., Nespeca, M. P., Peters, S. U., Sahoo, T., Sarco, D., Waisbren, S. E., & Bird, L. M. (2011). Angelman syndrome: Mutations influence features in early childhood. *American Journal of Medical Genetics. Part A*, 155A(1), 81–90. <https://doi.org/10.1002/ajmg.a.33775>.
- Tan, W. H., Bird, L. M., Sathwani, A., Barbieri-Welge, R. L., Skinner, S. A., Horowitz, L. T., Bacino, C. A., Noll, L. M., Fu, C., Hundley, R. J., Wink, L. K., Erickson, C. A., Barnes, G. N., Slavotinek, A., Jeremy, R., Rotenberg, A., Kothare, S. V., Olson, H. E., Poduri, A., ... Rufo, P. A. (2018). A randomized controlled trial of levodopa in patients with Angelman syndrome. *American Journal of Medical Genetics. Part A*, 176(5), 1099–1107. <https://doi.org/10.1002/ajmg.a.38457>.
- Thibert, R. L., Conant, K. D., Bruno, P., Said, R. R., Nespeca, M. P., & Thiele, E. A. (2009). Epilepsy in Angelman syndrome: A questionnaire-based assessment of the natural history and current treatment options. *Epilepsia*, 50(11), 2369–2376. <https://doi.org/10.1111/j.1528-1167.2009.02108.x>.
- Thibert, R. L., Larson, A. M., Hsieh, D. T., Raby, A. R., & Thiele, E. A. (2013). Neurologic manifestations of Angelman syndrome. *Pediatric Neurology*, 48(4), 271–279. <https://doi.org/10.1016/j.pediatrneurol.2012.09.015>.
- Thibert, R. L., Pfeifer, H. H., Larson, A. M., Raby, A. R., Reynolds, A. A., Morgan, A. K., & Thiele, E. A. (2012). Low glycemic index treatment for seizures in Angelman syndrome. *Epilepsia*, 53(9), 1498–1502. <https://doi.org/10.1111/j.1528-1167.2012.03537.x>.
- Valente, K. D., Andrade, J. Q., Grossmann, R. M., Kok, F., Fridman, C., Koiffmann, C. P., & Marques-Dias, M. J. (2003). Angelman syndrome: Difficulties in EEG pattern recognition and possible misinterpretations. *Epilepsia*, 44(8), 1051–1063. <https://doi.org/10.1046/j.1528-1157.2003.66502.x>.
- Van Splunder, J., Stilma, J. S., & Evenhuis, H. M. (2003). Visual performance in specific syndromes associated with intellectual disability. *European Journal of Ophthalmology*, 13(6), 566–574. <https://doi.org/10.1177/112067210301300610>.
- Vanagt, W. Y., Pulles-Heintzberger, C. F., Vernooy, K., Cornelussen, R. N., & Delhaas, T. (2005). Asystole during outbursts of laughing in a child with Angelman syndrome. *Pediatric Cardiology*, 26(6), 866–868. <https://doi.org/10.1007/s00246-005-0985-5>.
- Vendrame, M., Loddenkemper, T., Zarowski, M., Gregas, M., Shuhaiber, H., Sarco, D. P., Morales, A., Nespeca, M., Sharpe, C., Haas, K., Barnes, G., Glaze, D., & Kothare, S. V. (2012). Analysis of EEG patterns and genotypes in patients with Angelman syndrome. *Epilepsy & Behavior*, 23(3), 261–265. <https://doi.org/10.1016/j.yebeh.2011.11.027>.
- Vestergaard, P., & Sayegh, J. F. (1966). Semi-automated assays for urinary 17-ketogenic steroids. A comparison of bismuthate and periodate oxidation methods. *Clinica Chimica Acta*, 14(2), 247–262. [https://doi.org/10.1016/0009-8981\(66\)90095-7](https://doi.org/10.1016/0009-8981(66)90095-7).
- Walz, N. C., Beebe, D., & Byars, K. (2005). Sleep in individuals with Angelman syndrome: parent perceptions of patterns and problems. *American Journal of Mental Retardation*, 110(4), 243–252.
- Wang, P. J., Hou, J. W., Sue, W. C., & Lee, W. T. (2005). Electroclinical characteristics of seizures-comparing Prader-Willi syndrome with Angelman syndrome. *Brain and Development*, 27(2), 101–107. <https://doi.org/10.1016/j.braindev.2003.11.009>.
- Warner, M. E., Martin, D. P., Warner, M. A., Gavrilo, R. H., Sprung, J., & Weingarten, T. N. (2017). Anesthetic considerations for Angelman syndrome: Case series and review of the literature. *Anesthesiology and Pain Medicine*, 7(5), e57826. <https://doi.org/10.5812/aapm.57826>.
- Warzak, W. J., Forcino, S. S., Sanberg, S. A., & Gross, A. C. (2016). Advancing continence in typically developing children: Adapting the procedures of Foxx and Azrin for primary care. *Journal of Developmental and Behavioral Pediatrics*, 37(1), 83–87. <https://doi.org/10.1097/DBP.0000000000000232>.
- Wheeler, A. C., Okoniewski, K. C., Wylie, A., DeRamus, M., Hiruma, L. S., Toth, D., & Christian, R. B. (2019). Anxiety-associated and separation distress-associated behaviours in Angelman syndrome. *Journal of Intellectual Disability Research*, 63(10), 1234–1247. <https://doi.org/10.1111/jir.12635>.
- Williams, C. A. (2005). Neurological aspects of the Angelman syndrome. *Brain and Development*, 27(2), 88–94. <https://doi.org/10.1016/j.braindev.2003.09.014>.
- Williams, C. A., Beaudet, A. L., Clayton-Smith, J., Knoll, J. H., Kyllerman, M., Laan, L. A., Magenis, R. E., Moncla, A., Schinzel, A. A., Summers, J. A., & Wagstaff, J. (2006). Angelman syndrome 2005: Updated consensus for diagnostic criteria. *American Journal of Medical Genetics. Part A*, 140(5), 413–418. <https://doi.org/10.1002/ajmg.a.31074>.
- Williams, C. A., Driscoll, D. J., & Dagli, A. I. (2010). Clinical and genetic aspects of Angelman syndrome. *Genetics in Medicine*, 12(7), 385–395. <https://doi.org/10.1097/GIM.0b013e3181def138>.
- Wine, J. N., Sanda, C., & Caballero, J. (2009). Effects of quetiapine on sleep in nonpsychiatric and psychiatric conditions. *Annals*

- of *Pharmacotherapy*, 43(4), 707–713. <https://doi.org/10.1345/aph.1L320>.
- Witte, W., Nobel, C., & Hilpert, J. (2011). Anesthesia and Angelman syndrome. *Anaesthesist*, 60(7), 633–640. <https://doi.org/10.1007/s00101-011-1873-4>.
- Worden, L., Grocott, O., Tourjee, A., Chan, F., & Thibert, R. (2018). Diazepam for outpatient treatment of nonconvulsive status epilepticus in pediatric patients with Angelman syndrome. *Epilepsy & Behavior*, 82, 74–80. <https://doi.org/10.1016/j.yebeh.2018.02.027>.
- Yamamoto, Y., Huijbregtse, J. M., & Howley, P. M. (1997). The human E6-AP gene (UBE3A) encodes three potential protein isoforms generated by differential splicing. *Genomics*, 41(2), 263–266. <https://doi.org/10.1006/geno.1997.4617>.
- Yang, X. Y., Zou, L. P., Song, F., Zhang, L. P., Zheng, H., Wu, H. S., & Xiao, J. (2010). Clinical manifestation and EEG characteristics of Angelman syndrome. *Zhonghua Er Ke Za Zhi*, 48(10), 783–786.
- Ye, H., Lan, X., Liu, Q., Zhang, Y., Wang, S., Zheng, C., Di, Y., & Qiao, T. (2019). Ocular findings and strabismus surgery outcomes in Chinese children with Angelman syndrome: Three case reports. *Medicine (Baltimore)*, 98(51), e18077. <https://doi.org/10.1097/MD.0000000000018077>.
- Zhdanova, I. V., Wurtman, R. J., & Wagstaff, J. (1999). Effects of a low dose of melatonin on sleep in children with Angelman syndrome. *Journal of Pediatric Endocrinology and Metabolism*, 12(1), 57–67. <https://doi.org/10.1515/jpem.1999.12.1.57>.
- Zori, R. T., Hendrickson, J., Woolven, S., Whidden, E. M., Gray, B., & Williams, C. A. (1992). Angelman syndrome: Clinical profile. *Journal of Child Neurology*, 7(3), 270–280. <https://doi.org/10.1177/088307389200700307>.

## SUPPORTING INFORMATION

Additional supporting information may be found in the online version of the article at the publisher's website.

**How to cite this article:** Duis, J., Nespeca, M., Summers, J., Bird, L., Bindels-de Heus, K. G. C. B., Valstar, M. J., de Wit, M.-C. Y., Navis, C., ten Hooven-Radstaake, M., van Iperen-Kolk, B. M., Ernst, S., Dendrinou, M., Katz, T., Diaz-Medina, G., Katyayan, A., Nangia, S., Thibert, R., Glaze, D., Keary, C., ... Anderson, A. (2022). A multidisciplinary approach and consensus statement to establish standards of care for Angelman syndrome. *Molecular Genetics & Genomic Medicine*, 10, e1843. <https://doi.org/10.1002/mgg3.1843>