

## RESEARCH ARTICLE

# Interleukin-17 is disease promoting in early stages and protective in late stages of experimental periodontitis

Anneke Wilharm<sup>1</sup> , Christoph Binz<sup>1</sup> \*, Inga Sandrock<sup>1</sup>, Francesca Rampoldi<sup>1</sup>, Stefan Lienenklaus<sup>2</sup>, Eva Blank<sup>3,4</sup>, Andreas Winkel<sup>3,4</sup>, Abdi Demera<sup>1</sup>, Avi-Hai Hovav<sup>5</sup>, Meike Stiesch<sup>3,4</sup>, Immo Prinz<sup>1,6</sup>

**1** Institute of Immunology, Hannover Medical School, Hannover, Germany, **2** Institute of Laboratory Animal Science, Hannover Medical School, Hannover, Germany, **3** Department of Prosthetic Dentistry and Biomedical Materials Science, Hannover Medical School, Hannover, Germany, **4** Lower Saxony Centre for Biomedical Engineering, Implant Research and Development (NIFE), Hannover, Germany, **5** Institute of Dental Sciences, Faculty of Dental Medicine, Hebrew University, Jerusalem, Israel, **6** Institute of Systems Immunology, University Medical Center Hamburg-Eppendorf, Hamburg, Germany

 These authors contributed equally to this work.

\* [christoph.binz@arcor.de](mailto:christoph.binz@arcor.de)



## OPEN ACCESS

**Citation:** Wilharm A, Binz C, Sandrock I, Rampoldi F, Lienenklaus S, Blank E, et al. (2022) Interleukin-17 is disease promoting in early stages and protective in late stages of experimental periodontitis. PLoS ONE 17(3): e0265486. <https://doi.org/10.1371/journal.pone.0265486>

**Editor:** Kunaal Dhingra, All India Institute of Medical Sciences, INDIA

**Received:** June 8, 2021

**Accepted:** March 2, 2022

**Published:** March 17, 2022

**Peer Review History:** PLOS recognizes the benefits of transparency in the peer review process; therefore, we enable the publication of all of the content of peer review and author responses alongside final, published articles. The editorial history of this article is available here: <https://doi.org/10.1371/journal.pone.0265486>

**Copyright:** © 2022 Wilharm et al. This is an open access article distributed under the terms of the [Creative Commons Attribution License](https://creativecommons.org/licenses/by/4.0/), which permits unrestricted use, distribution, and reproduction in any medium, provided the original author and source are credited.

**Data Availability Statement:** All relevant data are within the manuscript and its [Supporting Information](#) files.

## Abstract

Periodontitis is one of the most common infectious diseases in humans. It is characterized by a chronic inflammation of the tooth-supporting tissue that results in bone loss. However, the role and source of the pro-inflammatory cytokine interleukin-17 (IL-17) and of the cells producing it locally in the gingiva is still controversial. Th17  $\alpha\beta$  T cells, CD4<sup>+</sup> exFoxP3<sup>+</sup>  $\alpha\beta$  T cells, or IL-17-producing  $\gamma\delta$  T cells ( $\gamma\delta$ 17 cells) seem to be decisive cellular players in periodontal inflammation. To address these issues in an experimental model for periodontitis, we employed genetic mouse models deficient for either  $\gamma\delta$  T cells or IL-17 cytokines and assessed the bone loss during experimental periodontal inflammation by stereomicroscopic, histological, and  $\mu$ CT-analysis. Furthermore, we performed flow-cytometric analyses and qPCR-analyses of the gingival tissue. We found no  $\gamma\delta$  T cell- or IL-17-dependent change in bone loss after four weeks of periodontitis. Apart from that, our data are complementary with earlier studies, which suggested IL-17-dependent aggravation of bone loss in early periodontitis, but a rather bone-protective role for IL-17 in late stages of experimental periodontitis with respect to the osteoclastogenicity defined by the RANKL/OPG ratio.

## Introduction

$\gamma\delta$  T cells are innate T cells developing in embryonic and postnatal phase [1], conserved among almost all jawed vertebrates [2] including mice and humans. In mice,  $\gamma\delta$  T cells are known to constitute the majority of epithelial-resident T cells [3]. After their development in the thymus, they egress in several waves of cells expressing distinct  $\gamma\delta$ TCRs to home to these epithelial tissues [1, 4], as for example the skin and the gingiva [3, 5]. The dermal layer of the skin is populated by V $\gamma$ 4<sup>+</sup> and V $\gamma$ 6<sup>+</sup>  $\gamma\delta$  T cells that rapidly produce IL-17 to induce

**Funding:** This work was supported by the German–Israeli Foundation for Scientific Research and Development Grant 1432 (to A.-H.H. and I.P., <http://www.gif.org.il/pages/default.aspx>), by a grant from the Niedersächsisch-Israelische Forschungsförderung (to A.-H.H. and I.P.), and by the DG PARO CP GABA (to A.W., I.P., and M.S.) A. Wilharm and C. Binz were supported by the Hannover Biomedical Research School. The funders had no role in study design, data collection and analysis, decision to publish, or preparation of the manuscript.

**Competing interests:** The authors have declared that no competing interests exist.

inflammation [3, 6, 7]. Recently we and others found that also the gingiva, especially the junctional epithelium (JE) directly lining the teeth, is populated by mainly  $V\gamma 6^+$   $\gamma\delta$  T cells [8].

With a prevalence of almost 50% in adults, periodontitis is a very common [9, 10] inflammatory disease of the tooth-supporting tissue. It is induced by oral bacteria as well as by the subsequent reaction of the host immune system [11]. Untreated it may lead to tooth-loss, since the chronic inflammation is accompanied by the loss of periodontal attachment and retraction of the alveolar bone [12]. *Porphyromonas gingivalis*, together with *Tannerella forsythia* and *Treponema denticola*, belongs to the “red complex” of bacteria, which are strongly associated with periodontal disease, originally described by Socransky *et al.* [13]. The invading oral bacteria can be disseminated to other sites of the organism [14] and drive inflammation there [15, 16], which was already proposed in 1891 in the aptly named article “The human mouth as a focus of infection” [17]. Furthermore, periodontitis is linked to diseases like cardiovascular diseases [18] and rheumatoid arthritis [19, 20].

During the course of periodontitis, osteoclasts in the tooth-supporting tissue are activated by “receptor activator of NF $\kappa$ B ligand” (RANKL) [21] and “secreted osteoclastogenic factor of activated T cells” (SOFAT) [22] resulting in the destruction of alveolar bone. RANKL expression has been reported to be induced on osteoblastic and ligament cells by IL-17 produced by T cells [23, 24] as well as being expressed by those T cells themselves, both also true for periodontitis [14]. SOFAT, a RANKL-independent activator of osteoclastogenesis, is directly secreted from T cells and increased in periodontitis patients.

Overall, IL-17 (IL-17A) is known as a pro-inflammatory cytokine. The corresponding IL-17 receptor IL-17RA is expressed by macrophages or dendritic cells (DC), as well as by fibroblasts or epithelial cells and its engagement leads to secretion of cytokines, matrix-metalloproteinases or antimicrobial peptides [25, 26]. Thus, also in the gingiva, IL-17 attracts especially neutrophils, which is impaired in IL-17RA knockout mice aggravating the alveolar bone loss during periodontitis [27].

Nonetheless, the context of action seems to be important when judging its effects as beneficial or detrimental [28–30]. For example, IL-17 production by  $\gamma\delta$  T cells ( $\gamma\delta$ T17) was shown to be important for effective bacterial clearance [31–41] or control of fungal burden [42, 43]. In the oral cavity,  $V\gamma 6^+$   $\gamma\delta$ T17 play a protective role in immunity against *Candida albicans* in the tongue epithelium [5]. For induced orthodontic tooth-movement, they were described as beneficial, since their presence allows bone-remodeling in the tooth-supporting tissue [44]. However,  $\gamma\delta$ T17 cells are associated with tissue destruction in autoimmune diseases in a variety of tissues. In psoriatic skin,  $\gamma\delta$ T17 cells have been described as important pro-inflammatory populations [28, 45] and depletion led to amelioration of the symptoms [46]. In models of spondylo- and rheumatoid arthritis,  $\gamma\delta$ T17 cells were reported to be a major source of IL-17 and thus to aggravate experimental enthesitis [47–49]. Although Th17 cells are also important producers of IL-17 in experimental autoimmune encephalitis (EAE), the critical role of  $\gamma\delta$ T17 cells in induction of this pathology is emerging [50–53].

Still, it is unclear whether exFoxp3 Th17  $\alpha\beta$  T cells [14] or amphiregulin producing  $\gamma\delta$  T cells [54], that were shown to produce IL-17 in the gingiva [8], play the most decisive role for the outcome of the periodontal inflammation. Moreover, after ten days of inflammation, bone loss was reduced in *IL17af<sup>-/-</sup>* mice [14], but enhanced in IL-17RA knockout mice after six weeks of inflammation [27]. Furthermore, at other barrier sites,  $\gamma\delta$  T cells have been reported to be beneficial with respect to body-barrier integrity [55, 56], host-defense [5] or host-commensal homeostasis [57]. Therefore, it is unclear whether IL-17 and its producers have a bone-protective or a bone-damaging role. It has been proposed that IL-17 is a “double-edged sword” [14] in this context, fighting pathogens but simultaneously damaging the bone-supporting tissue.

To shed more light onto these partially contradicting results, we used an experimental model of ligature-induced periodontitis and analyzed the ligature-induced bone loss in *Tcrd*-

H2BeGFP (as WT-control expressing eGFP in all  $\gamma\delta$  T cells), *Tcrd*<sup>-/-</sup> and *IL17af*<sup>-/-</sup> mice after four weeks of inflammation was analyzed, representing a time point between the two assessed ones in the publications mentioned above [14, 27, 54]. Surprisingly, we could not detect any differences between those three genotypes. Therefore, we conclude that the IL-17 production by the present  $\alpha\beta$  T cells must be more relevant during the course of periodontitis, than the one by  $\gamma\delta$  T cells, as previously shown by Tsukasaki *et al.* and that IL-17 indeed acts as a double-edged sword. Moreover, our data add to the idea that the bone-damaging effects of IL-17 in periodontitis might be an evolutionarily beneficial emergency-stop switch for the inflammation, that otherwise persists for a longer period and threatens the whole organism.

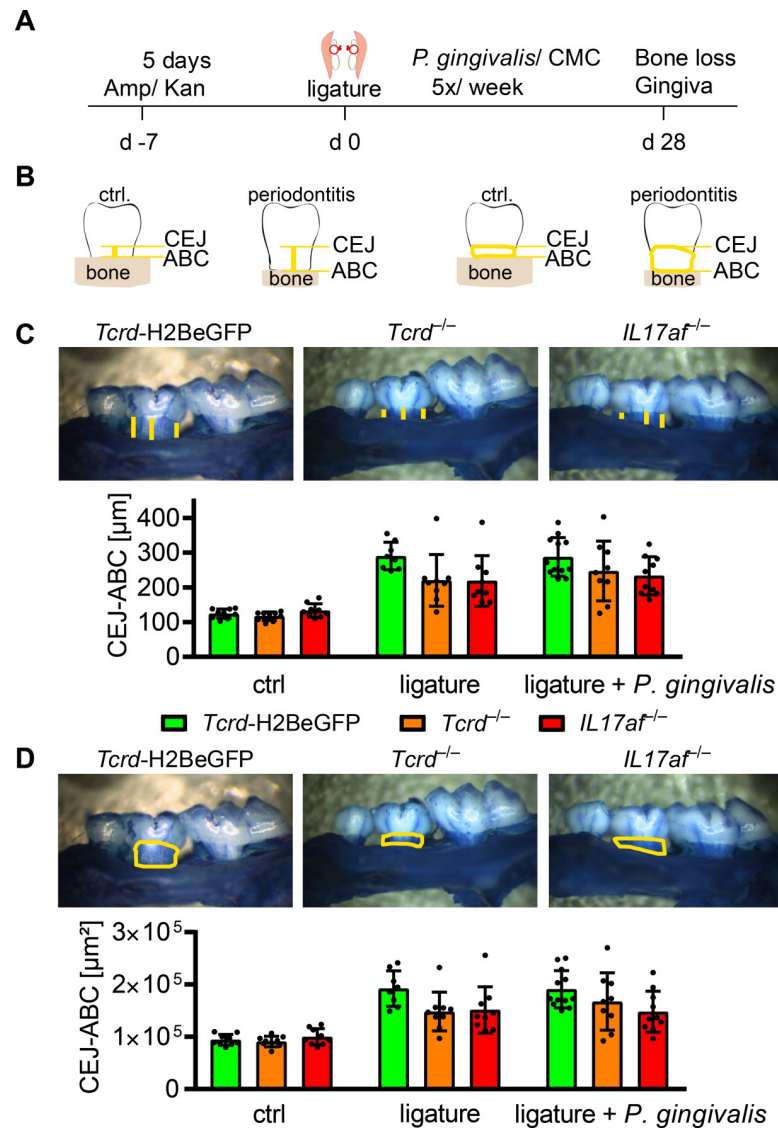
## Results

### *P. gingivalis* is dispensable for bone loss in ligature-induced periodontitis in mice

Since there are different methods in use to assess the bone erosion in periodontitis experimentally [58–60], we aimed to investigate the bone erosion in *Tcrd*-H2BeGFP mice, *Tcrd*<sup>-/-</sup> mice and *IL17af*<sup>-/-</sup> mice performing two slightly distinct models and applying two different ways of analysis afterwards. The first approach was based on an initial reduction of oral microbiota by application of ampicillin and kanamycin for five days. After two days without antibiotics, ligatures were placed, tying a piece of suture material around both second molars of the maxilla and fixing it with two nods on the lingual side of the teeth. *P. gingivalis* was subsequently administered orally five times per week for four consecutive weeks (Fig 1A). On the other hand, we only applied a ligature around the second molars of the mice, sacrificed and analyzed the mice 28 days later. The analysis of bone erosion was performed after imaging the jaws by measuring the cemento-enamel-junction to alveolar-bone-crest (CEJ-ABC) distance at defined tooth-structures [58] at the ligated second molar or by measuring the area of the teeth laying open between CEJ and ABC (Fig 1B). Both models induced significant and comparable bone-loss (Fig 1C and 1D). There seemed to be a more severe bone erosion in the *Tcrd*-H2BeGFP mice compared to the *Tcrd*<sup>-/-</sup> and *IL17af*<sup>-/-</sup> mice, which showed very similar amounts of bone loss, but no statistically significant differences were detectable between the three genotypes. Furthermore, we analyzed the immune cells in the gingiva of the respective mice by flow cytometry (full gating strategy in S1 Fig). The number of CD45<sup>+</sup> cells or of T cells did not increase in response to either treatment (Fig 2A). Looking into the T cell compartment we could not detect any significant changes induced by the treatment regarding  $\alpha\beta$  T cells,  $\gamma\delta$  T cells or the predominant V $\gamma$ 6<sup>+</sup>  $\gamma\delta$  T cells in percentagewise or absolute presence in the gingiva, despite there seemed to be a slight tendency towards an increase in both subsets for the ligature and ligature plus *P. gingivalis* treatment group (Fig 2B and 2C), confirming earlier reports [14]. While neutrophils in ligature treated animals, in line with the literature [14, 27], seemed to increase percentagewise and showed a statistically significant increase in absolute numbers, the macrophages showed a significant percentagewise decrease and no absolute decrease, suggesting an enhanced neutrophil presence in the gingiva (Fig 2D). Due to the high similarity of the outcomes of both models, we decided to restrict the following experiments to the ligature-model.

### RT-PCR reveals protective role of IL-17 in periodontitis independent of $\gamma\delta$ T cells

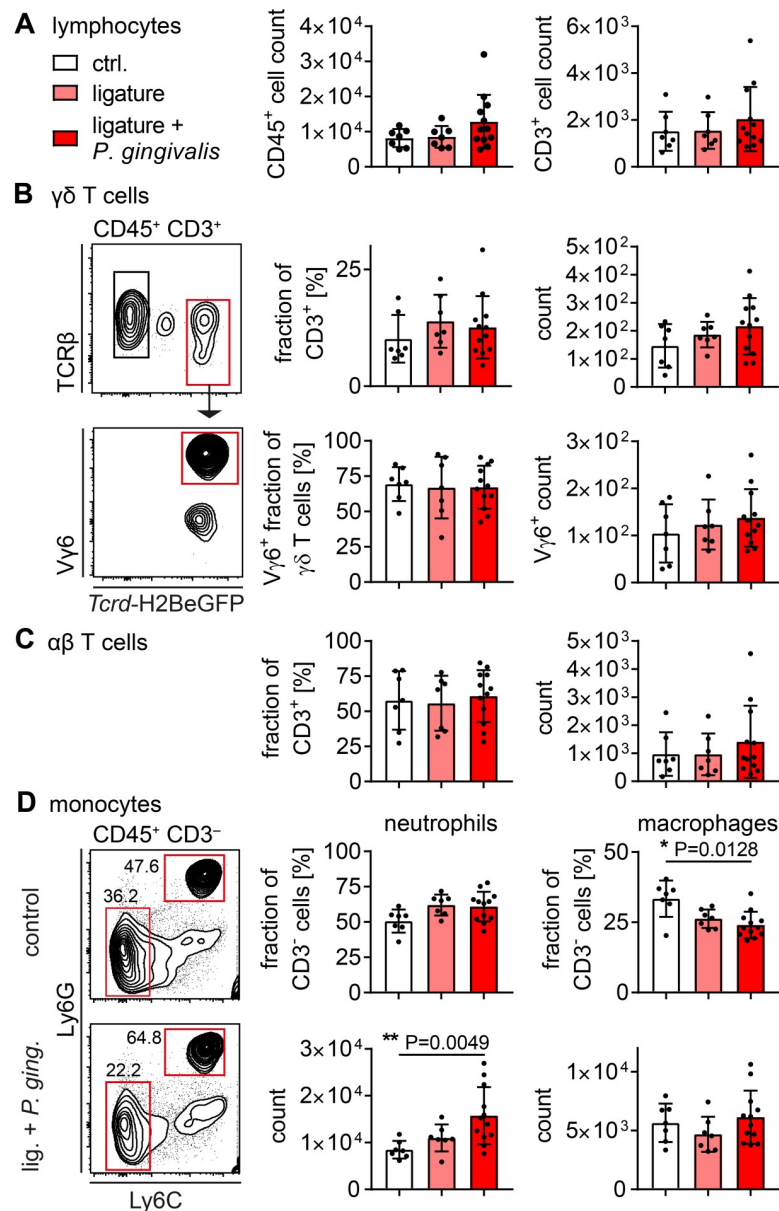
The bone loss observed in the model used here, is a result of the inflammation-associated T cell activation in the gingiva, leading to RANKL secretion by T cells, that in turn binds to its receptor RANK on osteoclasts inducing their final differentiation and thereby intensifying the



**Fig 1. No differences in ligature-induced bone-loss between *Tcrd*-H2BeGFP, *Tcrd*<sup>-/-</sup> and *IL17af*<sup>-/-</sup> mice with or without presence of *P. gingivalis*.** (A) scheme of the procedure applied to induce periodontitis. (B) Scheme of the bone-loss-analysis by measuring the CEJ-ABC distance (left) or the area laying open between CEJ and ABC (right). (C) CEJ-ABC distance and representative raw-data of defleshed jaws after methylene blue staining. Each point represents a mouse. Data were statistically analyzed by Kruskal-Wallis test, mean and SD are shown. (D) CEJ-ABC area and representative raw-data of defleshed jaws after methylene blue staining. Each point represents a mouse. Data were obtained from three independent experiments and statistically analyzed by Kruskal-Wallis test and Dunn's multiple comparisons, mean and SD are shown. A p-value below 0.05 was considered as significant. All genotypes show statistically significant bone loss compared to control, which is not depicted in the figure.

<https://doi.org/10.1371/journal.pone.0265486.g001>

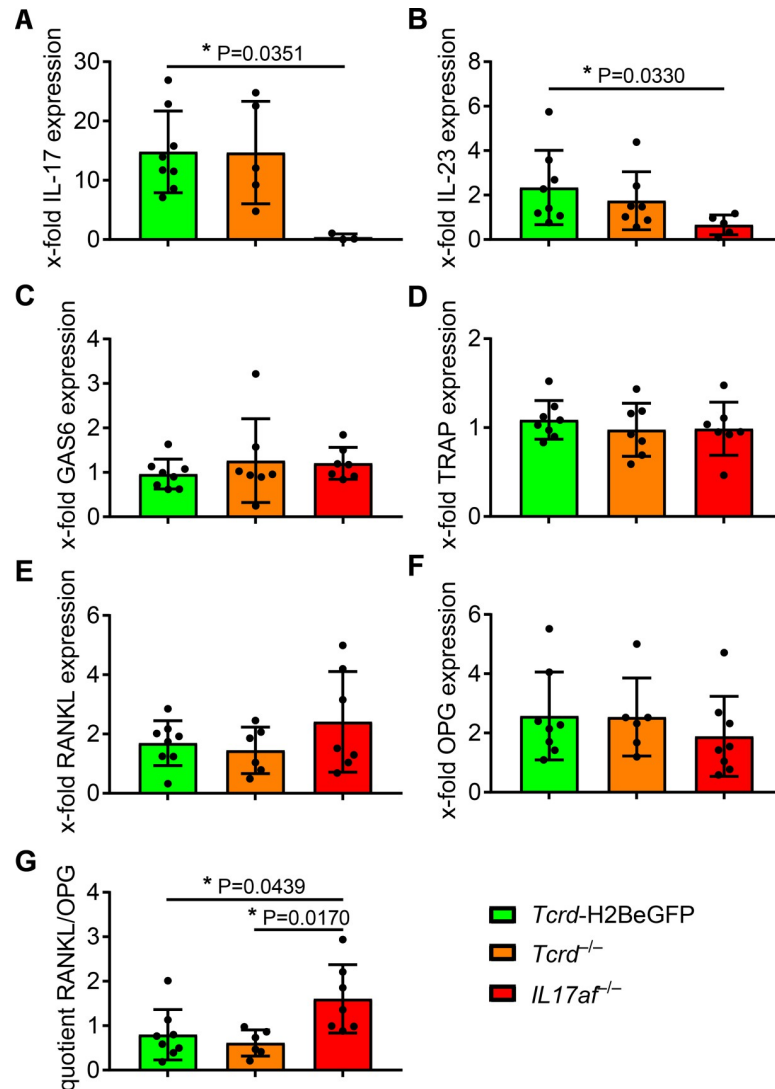
bone loss [21]. A RANKL-inhibitory protein is osteoprotegerin (OPG), that is secreted by osteoblasts and blocks the RANKL-RANK binding by binding to RANKL [21]. Besides a qPCR-measurement of their induction during the experimental periodontitis, we assessed the osteoclast-activity based on the induction of the tartrate-resistant acid-phosphatase (TRAP), an enzyme responsible for bone resorption by osteoclasts [61] and growth-arrest-specific-6 (GAS6), that has been reported to be a key factor for establishment of oral homeostasis [62] and that activates osteoclasts via the Tyrosine-protein-kinase-receptor Tyro-3 [63].



**Fig 2. Cellular immune reaction to ligature-induced periodontitis.** (A) Number of CD45<sup>+</sup> lymphocytes and CD3<sup>+</sup> T cells isolated from gingival tissue of ligature-treated and control mice. (B) Fraction and number of  $\gamma\delta$  T cells isolated from gingival tissue of ligature-treated and control mice in CD45<sup>+</sup> CD3<sup>+</sup> or CD45<sup>+</sup> CD3<sup>+</sup> TCR $\gamma\delta$ <sup>+</sup> gate, respectively, and representative gating. (C) Fraction and number of  $\alpha\beta$  T cells isolated from gingival tissue of ligature-treated and control mice in CD45<sup>+</sup> CD3<sup>+</sup> gate. (D) Fraction and number of neutrophils and macrophages in CD45<sup>+</sup> CD3<sup>-</sup> gate. In all diagrams each point represents a mouse. Data were obtained from three independent experiments and statistically analyzed by Kruskal-Wallis test and Dunn's multiple comparisons, mean and SD are shown. A p-value below 0.05 was considered as significant.

<https://doi.org/10.1371/journal.pone.0265486.g002>

Notably, induction of IL-17 expression was only detectable in *Tcrd*-H2BeGFP and *Tcrd*<sup>-/-</sup> mice to a comparable level and not at all in *IL17af*<sup>-/-</sup> mice (Fig 3A). Apart from that, induction of IL-23 expression is diminished in *IL17af*<sup>-/-</sup> mice in response to the treatment (Fig 3B), which suggests in line with the missing IL-17 in these mice a weaker inflammation. Neither GAS6 nor TRAP expression was differently induced by the treatment in any group (Fig 3C and 3D), supporting our data not showing a difference in bone loss.



**Fig 3. qPCR shows no difference in acute osteoclast-activity between *Tcrd*-H2BeGFP, *Tcrd*<sup>-/-</sup> and *IL17af*<sup>-/-</sup> mice, while RANKL/OPG ratio suggests an osteoclastogenic milieu in *IL17af*<sup>-/-</sup> mice.** The ligature-induced induction of IL-17 (A), IL-23 (B), GAS6 (C), TRAP (D), RANKL (E) and OPG (F) expression in *Tcrd*-H2BeGFP, *Tcrd*<sup>-/-</sup> and *IL17af*<sup>-/-</sup> mice measured by qPCR-analysis employing the  $\Delta\Delta C_t$  method and RANKL/OPG ratio (G) as a measure of osteoclastogenic milieu. In all diagrams each point represents a mouse. The data are normalized to HPRT-induction by ligature-induced periodontitis. Data were obtained from two independent experiments and statistically analyzed by Kruskal-Wallis test and Dunn's multiple comparisons, two outliers were removed by Grubb's test, mean and SD are shown. A p-value below 0.05 was considered as significant.

<https://doi.org/10.1371/journal.pone.0265486.g003>

Furthermore, the RT-PCR showed no difference in RANKL or OPG induction by the treatment in *Tcrd*-H2BeGFP or *Tcrd*<sup>-/-</sup> mice (Fig 3E and 3F). In *IL17af*<sup>-/-</sup> mice, RANKL expression seems to be slightly more induced and OPG expression slightly less induced compared to *Tcrd*-H2BeGFP and *Tcrd*<sup>-/-</sup> mice (Fig 3E and 3F). Accordingly, a significantly increased RANKL/OPG ratio induced by the treatment occurs in *IL17af*<sup>-/-</sup> mice (Fig 3G). Together those data suggest, there is no difference in real osteoclast activity, whereas the milieu might become in *IL17af*<sup>-/-</sup> mice more and more osteoclastogenic, considering the elevated RANKL/OPG ratio. Apart from that, the data suggest, that the protective role of IL-17 is in the context of periodontitis largely independent of  $\gamma\delta$  T cells, as proposed before [14].

### Equal alveolar bone loss in *Tcrd*-H2BeGFP, *Tcrd*<sup>-/-</sup> and *IL17af*<sup>-/-</sup> mice after four weeks of inflammation

After no difference in bone loss in response to periodontitis in *Tcrd*-H2BeGFP, *Tcrd*<sup>-/-</sup> and *IL17af*<sup>-/-</sup> mice, there was a need to corroborate the data regarding the bone-loss-measurements, since they suggested, although statistically not significant, a tendency of diminished bone erosion not only in the *IL17af*<sup>-/-</sup> mice, but also in the *Tcrd*<sup>-/-</sup> mice. Therefore, we measured the CEJ-ABC distance on HE-stained cryo-sections. This analysis did not show any significant differences between the genotypes, whereas again the *IL17af*<sup>-/-</sup> mice seem to develop a less severe bone loss (Fig 4A and 4B).

Furthermore, we assessed the bone erosion in *Tcrd*-H2BeGFP, *Tcrd*<sup>-/-</sup> and *IL17af*<sup>-/-</sup> mice in response to ligature-application by  $\mu$ CT-imaging of the respective jaws and subsequent measurement of the CEJ-ABC distance. The 3-dimensionality of the data allowed us to assess the CEJ-ABC distance from both the palatal (Fig 4C and 4D) and the buccal side (Fig 4E and 4F) of the jaws. Applying this analysis, we could not detect any differences in bone erosion between the three genotypes (Fig 4D and 4F).

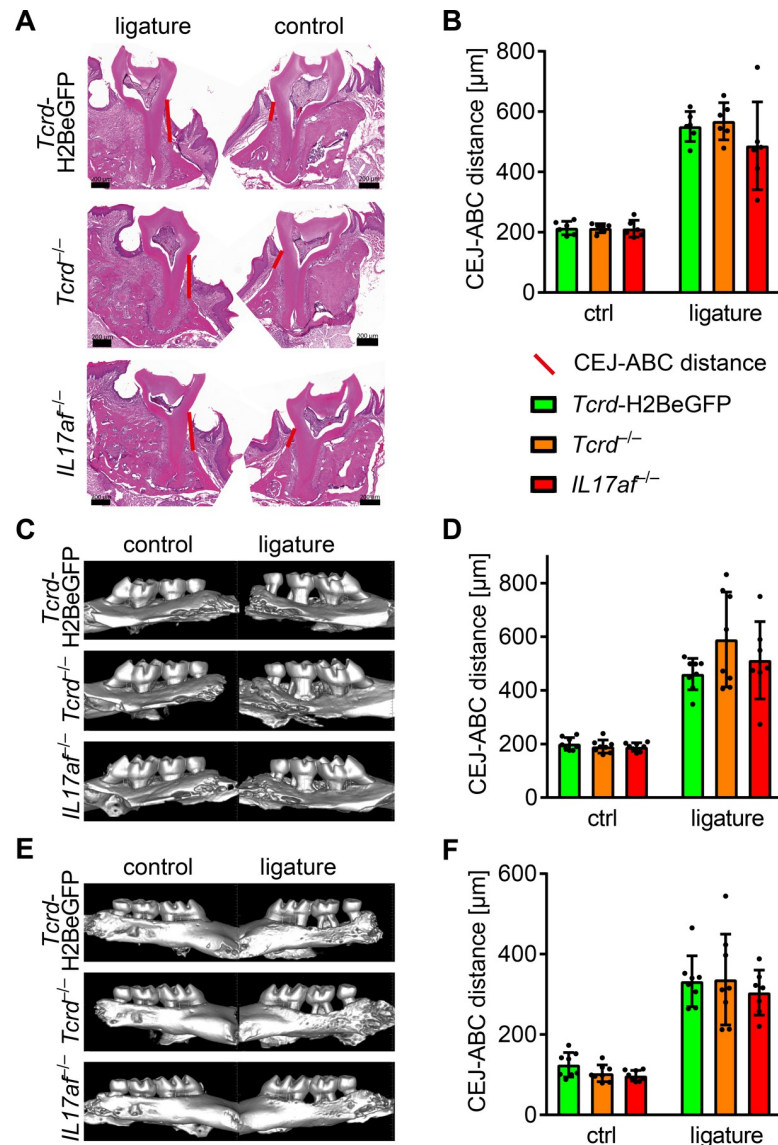
The three different imaging methods, two models and four variants of analysis we performed did not reveal any significant differences in bone loss between *Tcrd*-H2BeGFP, *Tcrd*<sup>-/-</sup> and *IL17af*<sup>-/-</sup> mice suggesting that, in line with previous reports [14], in the gingiva, the IL17-response by  $\alpha\beta$  T cells is in contrast to other epithelial sites decisive for the outcome of the inflammation. However, in contrast to earlier reports showing an amelioration of bone loss in *IL17af*<sup>-/-</sup> mice ten days after inflammation [14], four weeks after inflammation the alveolar bone loss of *Tcrd*-H2BeGFP and *IL17af*<sup>-/-</sup> mice seems to equalize.

### $\gamma\delta$ T cells are not functionally replaced by $\alpha\beta$ T cells in *Tcrd*<sup>-/-</sup> gingiva

Other experimental models suggest that  $\gamma\delta$  T cells can be functionally replaced by  $\alpha\beta$  T cells [46]. Therefore, we hypothesized that potentially Th17  $\alpha\beta$  T cells functionally replaced the missing  $\gamma\delta$  T cells in the gingiva of the *Tcrd*<sup>-/-</sup> mice, hiding the expected phenotype of reduced bone loss. To test this, we applied the ligature-model to *Tcrd*-GDL mice that can be conditionally depleted of all  $\gamma\delta$  T cells by diphtheria-toxin treatment. The comparison of  $\gamma\delta$  T cell depleted and not depleted *Tcrd*-GDL mice did not reveal an amelioration of bone loss after ligature-treatment (Fig 5). This suggests that different from other sites, in periodontitis  $\gamma\delta$  T cells are not functionally replaced by  $\alpha\beta$  T cells and the equal bone-loss in *Tcrd*-H2BeGFP and *Tcrd*<sup>-/-</sup> mice is due to an anyway more decisive function of the  $\alpha\beta$  T cells.

## Discussion

In this study, we aimed to clarify the contradicting effects of IL-17 and its producers in the course of periodontitis. A study from Krishnan *et al.* suggested an enhanced bone-loss in *Tcrd*<sup>-/-</sup> mice compared to WT after ten days of inflammation, while Tsukasaki *et al.* could not see any difference between both genotypes at that time point. However, after ten days of inflammation, bone loss was reduced in *IL17af*<sup>-/-</sup> mice [14]. The IL-17 produced during the inflammation has been shown to be indispensable for the recruitment of neutrophils to the gingiva [27], whose efferocytosis by macrophages in turn limits the production of IL-17 [64–66]. In IL-17RA knockout mice, this recruitment is not possible and the alveolar bone loss is enhanced after six weeks of inflammation [27]. Thus, while IL-17 had a bone-damaging effect around day ten of periodontitis [14, 54], it seemed to display an overall protective role in case the inflammation persisted for a period as long as six weeks [27]. In other epithelial sites of the organism than the gingiva, IL-17 is associated with inflammation-exacerbation and in case of

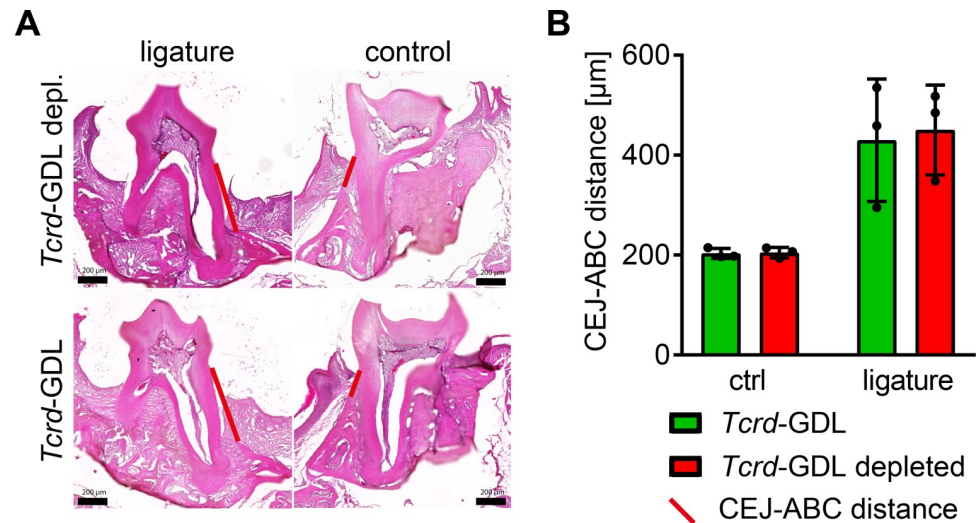


**Fig 4. No difference in ligature-induced bone loss between *Tcrd-H2BeGFP*, *Tcrd<sup>-/-</sup>* and *IL17af<sup>-/-</sup>* mice.** Representative HE-stained cryo-sections (A) of jaws from ligature-treated and control *Tcrd-H2BeGFP*, *Tcrd<sup>-/-</sup>* and *IL17af<sup>-/-</sup>* mice and (B) measured CEJ-ABC distance. Representative  $\mu$ CT images of jaws from ligature-treated and control *Tcrd-H2BeGFP*, *Tcrd<sup>-/-</sup>* and *IL17af<sup>-/-</sup>* mice and measured CEJ-ABC distance from palatal (C, D) and buccal (E, F) side. In all diagrams each point represents a mouse. Both the HE and  $\mu$ CT data sets were obtained from two independent experiments and statistically analyzed by Kruskal-Wallis test and Dunn's multiple comparisons, mean and SD are shown. A p-value below 0.05 was considered as significant. All genotypes show statistically significant bone loss compared to control, which is not depicted in the figure.

<https://doi.org/10.1371/journal.pone.0265486.g004>

deregulation with the establishment of chronic inflammation, as for example psoriasis in the skin [7], enthesal inflammation [48] or inflammations in the lung [67]. In those sites, IL-17 production by  $\gamma\delta$  T cells plays a prominent role for induction of the inflammation and associated tissue-damaging side effects. The situation in early periodontitis reflected this effect of IL-17, although it has been shown that in the gingiva the IL-17 production by  $CD4^+$   $\alpha\beta$  T cells plays an important role [68, 69] that seems to be more decisive [14] than the one by  $\gamma\delta$  T cells. Also in the human oral immune network, the gingiva was reported to accumulate immune





**Fig 5. Conditional depletion of  $\gamma\delta$  T cells suggests no functional replacement of missing  $\gamma\delta$  T cells by  $\alpha\beta$  T cells in the gingiva.** Representative HE-stained cryo-sections (A) of jaws from ligature-treated and control *Tcrd-GDL* and  $\gamma\delta$  T cell depleted *Tcrd-GDL* mice and (B) measured CEJ-ABC distance. Each point represents a mouse. Data were obtained from one experiment and statistically analyzed by Kruskal-Wallis test and Dunn's multiple comparison, mean and SD are shown. A p-value below 0.05 was considered as significant. All genotypes show statistically significant bone loss compared to control, which is not depicted in the figure.

<https://doi.org/10.1371/journal.pone.0265486.g005>

cells [70], especially neutrophils and T cells. However, while IL-17 was reported to be enhanced in human periodontitis [71–73], it was shown to be mainly produced by CD4<sup>+</sup>  $\alpha\beta$  T cells (Th17 cells) in health and periodontitis, while  $\gamma\delta$  T cells only showed a minor contribution [70]. Nevertheless, IL-17 mediates important functions for effective oral antifungal immunity also in humans [42]. Resembling this situation, our data, measured at a medium-duration of periodontitis (four weeks) showed no differences between *Tcrd-H2BeGFP*, *Tcrd*<sup>-/-</sup> and *IL17af*<sup>-/-</sup> mice. The conditional depletion of the  $\gamma\delta$  T cells, also not leading to a difference in bone loss, sustains these data. Despite that, the RANKL/OPG ratio seems to be slightly enhanced in *IL17af*<sup>-/-</sup> mice while osteoclast-markers also do not suggest differences in osteoclast activity.

We hypothesize that the seemingly contradictory conclusions drawn in past are caused by the different timespan between induction of periodontitis and assessment of bone-loss. From an evolutionary point of view, the teeth are very important. On the one hand you cannot eat and survive without them. On the other hand they cause a relatively fragile site in the outer body-barrier [74]. The gingiva, specifically the JE, is an extraordinary site of the body-barrier, where also the  $\gamma\delta$  T cells concentrate [8]. The JE represents a transmucosal passage in the external body-barrier connecting the bacteria inflicted oral cavity with the subjacent tissue layers including bone. Apart from that, the JE is much closer to the underlying alveolar bone than any other external body barrier epithelia. Moreover, the JE is exposed to constant mechanical forces by mastication and to the oral bacteria, which both influence the oral immune homeostasis [62, 75, 76]. While the epithelium of the oral cavity as well as other epithelial sites is protected by tight junctions, the JE is very thin and only weakly attached to the teeth via hemidesmosomes [74]. Thus, the consistency of the teeth out of mineral materials is necessary to ensure the sufficient hardness, but also makes the sealing of the connective site between tooth and gingiva difficult and weak. The reported dissemination of oral bacteria [14] to other sites of the body is reminiscent of this paradox. In other words: In case of a periodontal inflammation, which is common in humans, the organism needs to resolve the problem the fast as

possible to prohibit potential extension of the inflammation to the fragile neighboring gingiva, to minimize dissemination of bacteria in the body and to avoid tooth-loss. Our data now suggest that in absence of IL-17 after four weeks of periodontitis, the bone-damage reaches the level of *Tcrd*-H2BeGFP (i.e. wild type) mice. Therefore, we hypothesize that the function of IL-17 in early periodontitis is primarily the same as in other epithelial inflammations. It is pro-inflammatory and by this, in the unique situation in the tooth-supporting tissue, it is bone-damaging. This damage may be an evolutionary useful collateral damage, since it limits the timespan of chronic periodontitis by ultimately leading to tooth-loss and sealing of the body-barrier. Since our data suggest that in case of ongoing inflammation, bone loss in *IL17af*<sup>-/-</sup> becomes as intensive as in wild type mice and others showed a worsening after six weeks [27], the bone-damaging effects of IL-17 limit the timespan of bacterial dissemination to other sites, of potential spreading of the periodontitis to other tooth and potentially hampered mastication due to pain. Based on our data here, and integrating multiple prior publications using similar models, we suggest that the organism finally prefers to effectively fight the bacterial infection, at the price of tooth loss, which is the lesser evil in this context.

## Methods

### Animals

C57BL/6-*Tcrd*<sup>tm1Mal</sup>/J (*Tcrd*-H2BeGFP) mice [77], B6.129P2-*Tcrd*<sup>tm1Mom</sup>/J (*Tcrd*<sup>-/-</sup>) mice [78], B6.Cg-*Il17a*/*Il17a*<sup>tm1.1Impr</sup> (*IL17af*<sup>-/-</sup>) mice [6] and C57BL/6-*Tcrd*<sup>tm1(eGFP-2A-hDTR-2A-CBGr99 luciferase)Impr</sup> (*Tcrd*-GDL) [46] mice were bred in the animal facility of the central animal facility at Hannover Medical School (Hannover, Germany). All animal experiments were conducted in compliance with the German animal protection law (TierSchG BGBL. I S. 1105; 25.05.1998). All animal experiments were approved by the Lower Saxony Committee on the Ethics of Animal Experiments as well as the Lower Saxony State Office of Consumer Protection and Food Safety under the permit number 33.12-42502-04-16/2167.

### *P. gingivalis* culture and preparation for infection

Culture and handling of *Porphyromonas gingivalis* (ATCC 33277) was performed in an anaerobic incubator under an atmosphere containing 80% nitrogen, 10% carbon dioxide and 10% hydrogen. Every other day Schaedler medium (Oxoid Limited), supplemented with vitamin K (10  $\mu$ g/ml, Carl Roth GmbH & CO. KG, Karlsruhe, Germany) was inoculated with *P. gingivalis* to prepare liquid cultures. 6x10<sup>12</sup> cells per animal per day were resuspended in 50  $\mu$ l carboxymethyl cellulose (CMC) 2% dissolved in PBS to prepare the inoculum for oral infection.

### Ligature application and *P. gingivalis* administration for 28 days

Prior to ligature placement all animals received a combination of ampicillin and kanamycin (2 mg each per day and animal dissolved in ultrapure water) over 5 days. The antibiotics were administered directly into the oral cavity. After two days of recovery, ligatures were applied. In brief, the mice were anesthetized (Xylacin 5 mg/kg body weight and Ketamin 100 mg/kg body weight) and a piece of suture material (PremiCron 6/0, B.Braun Surgical, S.A. Rubi, Spain) was tied around each maxillar second molar and fixed with two nods on the lingual side of the teeth. The ligature was not applied in control mice. The following 28 days, the mouth of the "ligature + *P. gingivalis*" group was flushed 5 days per week with 50  $\mu$ l of bacterial inoculum, prepared as described above. The "ligature" group of mice and control mice only got CMC. At day 28, the mice were sacrificed by carbon dioxide inhalation and cervical dislocation and further processed.

## Defleshing, staining and microscopy of extracted jaws

For the quantification of alveolar bone loss around ligature treated teeth, the maxillae of the mice were partly dissected, including the complete molar area and fixed in paraformaldehyde (4%, dissolved in PBS) for 72h at 4°C. After fixation the samples were rinsed several times in PBS and stored afterwards in PBS at 4°C until further processing. To remove all the soft tissue from the jawbone and teeth, the dissected samples were incubated in 25% NaOH in a 15ml clear plastic tube (Sarstedt, Sarstedt AG & Co. KG, Nümbrecht, Germany) at room temperature and shaken vigorously several times within the tubes. When the jawbone and teeth of the maxilla were completely defleshed, they were rinsed several times in PBS, until a stable neutral pH was detectable. Afterwards they were stored in PBS until further processing. The jaws were stained in a solution of 0.5% methylene blue, dissolved in PBS, at a pH of 7.5 for 2–3 minutes. The staining facilitated the detection of the cemento-enamel junction (CEJ). Both rows of maxillary molars were photo documented from the lingual and the buccal side using a stereomicroscope (Type M3Z, Wild, Heerbrougg, Switzerland). The resulting images were analyzed using the IMS Client V16Q2 software. For the detection of alveolar bone loss the exposed area between CEJ and the alveolar bone crest was measured on the buccal and lingual side of the second molar, which had been fitted with the ligature in the experimental group.

## Histological analysis

After sacrifice of the mice and removal of the jaws, the tissue was fixated over-night in 4% paraformaldehyde (PFA). The fixated jaws were then decalcified by incubating them in 0.5 M EDTA in PBS for one week, with a daily renewal of the EDTA solution. For another night the jaws were kept in 30% (mass percentage) sucrose. The fixed and decalcified tissue was embedded in Tissue Tek® O.C.T™ Compound and frozen at -20°C. The frozen blocks were cut into 10  $\mu$ m sections by using a Leica cryotome CM3050, mounted on glass slides and dried for 30 min at 37°C. The sections were stained with Eosin and Hematoxylin. The imaging was performed employing a Zeiss Axio Scan.Z1 slide scanner and the resulting images were analyzed using the Zen (Blue edition) software version 3.2 from Zeiss and GraphPad Prism version 7.05.

## $\mu$ CT analysis

After sacrifice of the mice and removal of the maxilla, the right and left maxillary teeth-rows were excised and the gingival tissue was removed by forceps. The bone and teeth were subjected to  $\mu$ CT analysis, performed by the small-animal-imaging center of the central animal facility of Hannover medical school (Hannover, Germany) in a Siemens Inveon  $\mu$ CT (80kV, 500 $\mu$ A, 720 projections, binning 1; effective pixel size 8.17 $\mu$ m). For the analysis, the 3D-datasets were analyzed within the Inveon research workspace version 4.2 by positioning the jaws horizontally to allow a view onto the palatal or buccal side of the jaw and subsequent measurement of the CEJ-ABC distance in the software. Further data processing was performed in GraphPad Prism version 7.05.

## qPCR

After sacrifice of the mice and removal of the maxilla, the right and left maxillary teeth-rows were excised and the gingival tissue was removed by forceps. The remaining bone and teeth were subjected to  $\mu$ CT analysis. The gingival tissue was stored in PBS and subjected to RNA-isolation by an Ultra-turrax T18 basic from IKA and Qiagen RNeasy micro-kit. 4  $\mu$ g RNA were subjected to cDNA synthesis (4 $\mu$ g RNA in 12  $\mu$ l dH<sub>2</sub>O, 1  $\mu$ l oligodT (12  $\mu$ M), 1  $\mu$ l dNTP (2.5 mM)) and heated in a PCR-cycler for 5 min to 65°C. Immediately the mixture was

placed on ice and a PCR-mastermix (4  $\mu$ l superscript III 5X FS buffer, 1  $\mu$ l DTT (100  $\mu$ M), 1  $\mu$ l superscript III (200 U/ $\mu$ L), 0.1  $\mu$ l RNase out (40 U/ $\mu$ L)) was added. The mixture was then placed into the PCR-cycler and subjected to cDNA synthesis (60 min 50°C followed by 15 min 70°C). The following real-time qPCR was performed employing the SYBR® Premix Ex Taq™ II Kit from Takara Bio and HPLC-purified customized primer supplied from Sigma Aldrich (*GAS6* forward: AGGTCTGCCACAACAACCA; *GAS6* reverse: GCGTAGTCTAATCA CGGGG; *IL-17* forward: GCCCTCAGACTACCTCAACC; *IL-17* reverse: GTCCTAGTAGGGA GGTGTGAAGTTG; *IL-23* forward: AGCGGGACATATGAATCTACTAAGAGA; *IL-23* reverse: GTCCTAGTAGGGAGGTGTGAAGTTG; *OPG* forward: TACCTGGAGATCGAATTCCTGCTT; *OPG* reverse: CCATCTGGACATTTTTTGCAA; *RANKL* forward: TGTACTTTTCGAGGGCAGATG; *RANKL* reverse: AGGCTTGTTCATCCTCCTG; *TRAP* forward: GCTGGAAACCATGATCACCT; *TRAP* reverse: GAGTTGCCACACAGCATCAC). During the data analysis according to the  $\Delta\Delta C_t$  method employing microsoft excel 2010 and GraphPad Prism version 7.05, only samples displaying  $C_t$  values lower than 35 were included a priori. Data were normalized to HPRT-induction as housekeeping-gene.

### Isolation of gingival lymphocytes for flow cytometry

Isolation of gingival lymphocytes was performed as described previously [8]. In brief, after sacrifice of the mice, the maxilla was carefully removed. The right and the left molar teeth and the adjacent gingiva were excised with a scalpel. The tissue was subjected to a digestion by collagenase IV (2 mg/mL) and DNaseI (0.025 mg/mL) in RPMI 1640. After incubation in a shaker (1400 rpm) at 37°C for 1h, the digestion was stopped by adding 150  $\mu$ L 0.5 M EDTA and further incubation under the same conditions for 15 min. After removal of the gingival tissue from the bone and its mincing, the lymphocytes were then isolated by filtering the medium and the minced gingival tissue through a cell-strainer (100  $\mu$ m), washing of the cell-strainer by 6 mL MACS buffer (3% FCS (volume percentage) and 0,8% 0.5 M EDTA (volume percentage) in PBS) and centrifugation at 1250 rpm and 4°C for 5 min. The supernatant was removed and the cells were resuspended in 100  $\mu$ L of PBS for live/dead staining (Zombie Aqua dye, BioLegend) for 5 min on ice. After washing in MACS, the cells were blocked 5 min on ice with 5% F<sub>c</sub>-block (clone 2.4G2) in MACS buffer and stained with the respective antibodies (CD45.2-APC-eF780, eBioscience, clone 104; CD3e-PB, BioLegend, clone 17A2; Tcr $\beta$ -PerCP-Cy5.5, eBioscience, clone H57-597; TCR $\gamma\delta$ , homemade, clone GL3; IgM-PE, eBioscience, clone RM-7B4; Vg5/Vg6, homemade, clone 17D1; Ly6G-Cy5, homemade, clone 1A8; Ly6C-PE-Cy7, BioLegend, clone HK1.4) diluted in MACS buffer for 30 min on ice. Flow cytometric analysis was performed employing a Becton Dickinson LSRII, FACSDiva software version 8.0.1, FlowJo version 10 and GraphPad Prism version 7.05.

### Conditional ablation of $\gamma\delta$ T cells in vivo

The  $\gamma\delta$  T cell depletion was performed as previously described [46]. In brief, *Tcrd*-GDL mice were treated two times with 15 ng diphtheria-toxine (DTx) per gram body weight by intraperitoneal injection. The first DTx injection was performed 7 days before the ligature-application, the second one 5 days before the ligature-application. *Tcrd*-GDL mice in control groups were injected with PBS. Finally, the mice were subjected to the ligature-induced periodontitis model.

### Statistical analysis

Statistical analysis was performed in GraphPad Prism version 7.05. A p-value below 0.05 was considered as significant.

## Supporting information

**S1 Fig. Gating strategy during flow-cytometric analysis of *Tcrd*-H2BeGFP mice.** Representative gating strategy during the flow-cytometric analysis of (A) control and (B) ligature+*P. gingivalis* treated *Tcrd*-H2BeGFP mice for lymphocytes (upper panel) and neutrophils/macrophages (bottom panel).

(TIF)

**S1 Dataset.**

(XLSX)

## Acknowledgments

We thank Prof. Jörg Eberhard (Department of Prosthetic Dentistry and Biomedical Materials Science, Hannover Medical School, Hannover, Germany) for the support of the establishment of the experimental periodontitis model.

## Author Contributions

**Investigation:** Anneke Wilharm, Christoph Binz, Inga Sandrock, Francesca Rampoldi, Stefan Lienenklaus, Eva Blank, Abdi Demera.

**Project administration:** Immo Prinz.

**Supervision:** Avi-Hai Hovav, Meike Stiesch, Immo Prinz.

**Visualization:** Christoph Binz.

**Writing – original draft:** Christoph Binz.

**Writing – review & editing:** Anneke Wilharm, Christoph Binz, Stefan Lienenklaus, Eva Blank, Andreas Winkel, Meike Stiesch, Immo Prinz.

## References

1. Prinz I, Silva-Santos B, Pennington DJ. Functional development of  $\gamma\delta$  T cells. *Eur J Immunol*. 2013; 43(8):1988–94. <https://doi.org/10.1002/eji.201343759> PMID: 23928962
2. Das S, Li J, Hirano M, Sutoh Y, Herrin BR, Cooper MD. Evolution of two prototypic T cell lineages. *Cell Immunol*. 2015; 296(1):87–94. <https://doi.org/10.1016/j.cellimm.2015.04.007> PMID: 25958271
3. Chien YH, Meyer C, Bonneville M.  $\gamma\delta$  T cells: First line of defense and beyond. *Annu Rev Immunol*. 2014; 32:121–55. <https://doi.org/10.1146/annurev-immunol-032713-120216> PMID: 24387714
4. Carding SR, Egan PJ.  $\gamma\delta$  T cells: Functional plasticity and heterogeneity. *Nat Rev Immunol*. 2002; 2(5):336–45. <https://doi.org/10.1038/nri797> PMID: 12033739
5. Conti HR, Peterson AC, Brane L, Huppler AR, Hernandez-Santos N, Whibley N, et al. Oral-resident natural Th17 cells and  $\gamma\delta$  T cells control opportunistic *Candida albicans* infections. *J Exp Med*. 2014; 211(10):2075–84. <https://doi.org/10.1084/jem.20130877> PMID: 25200028
6. Haas JD, Ravens S, Düber S, Sandrock I, Oberdörfer L, Kashani E, et al. Development of Interleukin-17-Producing  $\gamma\delta$  T Cells Is Restricted to a Functional Embryonic Wave. *Immunity*. 2012; 37(1):48–59. <https://doi.org/10.1016/j.immuni.2012.06.003> PMID: 22770884
7. O'Brien R, Born WK. Dermal  $\gamma\delta$  T Cells—What Have We Learned? *Cell Immunol*. 2015; 296(1):62–9. <https://doi.org/10.1016/j.cellimm.2015.01.011> PMID: 25649119
8. Wilharm A, Tabib Y, Nassar M, Reinhardt A, Mizraji G, Sandrock I, et al. Mutual interplay between IL-17-producing  $\gamma\delta$  T cells and microbiota orchestrates oral mucosal homeostasis. *Proc Natl Acad Sci U S A*. 2019; 116(7):2652–61. <https://doi.org/10.1073/pnas.1818812116> PMID: 30692259
9. White DA, Tsakos G, Pitts NB, Fuller E, Douglas GVA, Murray JJ, et al. Adult Dental Health Survey 2009: Common oral health conditions and their impact on the population. *Br Dent J*. 2012; 213(11):567–72. <https://doi.org/10.1038/sj.bdj.2012.1088> PMID: 23222333

10. Hajishengallis G. Immunomicrobial pathogenesis of periodontitis: Keystones, pathobionts, and host response. *Trends Immunol.* 2014; 35(1):3–11. <https://doi.org/10.1016/j.it.2013.09.001> PMID: 24269668
11. Hernández M, Dutzan N, Garccía-Sesnich J, Abusleme L, González FE, Vernal R, et al. Host-Pathogen Interactions in Progressive Chronic Periodontitis. *J Dent Res.* 2011; 90(10):1164–70. <https://doi.org/10.1177/0022034511401405> PMID: 21471325
12. Tonetti MS, Greenwell H, Kornman KS. Staging and grading of periodontitis: Framework and proposal of a new classification and case definition. *J Clin Periodontol.* 2018; 45(Suppl 20):149–61.
13. Socransky SS, Haffajee AD, Cugini MA, Smith C, Kent RL. Microbial complexes in subgingival plaque. *J Clin Periodontol.* 1998; 25:134–44. <https://doi.org/10.1111/j.1600-051x.1998.tb02419.x> PMID: 9495612
14. Tsukasaki M, Komatsu N, Nagashima K, Nitta T, Pluemsakunthai W, Shukunami C, et al. Host defense against oral microbiota by bone-damaging T cells. *Nat Commun.* 2018; 9(1):1–11. <https://doi.org/10.1038/s41467-017-02088-w> PMID: 29317637
15. Atarashi K, Suda W, Luo C, Kawaguchi T, Motoo I, Narushima S, et al. Ectopic colonization of oral bacteria in the intestine drives TH1 cell induction and inflammation. *Science.* 2017; 365(6361):359–65. <https://doi.org/10.1126/science.aan4526> PMID: 29051379
16. Han YW, Wang X. Mobile microbiome: Oral bacteria in extra-oral infections and inflammation. *J Dent Res.* 2013; 92(6):485–91. <https://doi.org/10.1177/0022034513487559> PMID: 23625375
17. Miller WD. The human mouth as a focus of infection. In: *Lancet.* 1891. p. 340–2.
18. Bahekar AA, Singh S, Saha S, Molnar J, Arora R. The prevalence and incidence of coronary heart disease is significantly increased in periodontitis: A meta-analysis. *Am Heart J.* 2007; 154(5):830–7. <https://doi.org/10.1016/j.ahj.2007.06.037> PMID: 17967586
19. Farquharson D, Butcher JP, Culshaw S. Periodontitis, Porphyromonas, and the pathogenesis of rheumatoid arthritis. *Mucosal Immunol.* 2012; 5(2):112–20. <https://doi.org/10.1038/mi.2011.66> PMID: 22274780
20. König MF, Abusleme L, Reinholdt J, Palmer RJ, Teles RP, Sampson K, et al. Aggregatibacter actinomycetemcomitans-induced hypercitrullination links periodontal infection to autoimmunity in rheumatoid arthritis. *Sci Transl Med.* 2016; 8(369):1–13. <https://doi.org/10.1126/scitranslmed.aaj1921> PMID: 27974664
21. Cochran DL. Inflammation and Bone Loss in Periodontal Disease. *J Periodontol.* 2008; 79(8s):1569–76. <https://doi.org/10.1902/jop.2008.080233> PMID: 18673012
22. Jarry CR, Duarte PM, Freitas FF, Macedo CG de, Clemente-Napimoga JT, Saba-Chujfi E, et al. Secreted osteoclastogenic factor of activated T cells (SOFAT), a novel osteoclast activator, in chronic periodontitis. *Hum Immunol.* 2013; 74(7):861–6. <https://doi.org/10.1016/j.humimm.2013.04.013> PMID: 23619471
23. Lin D, Li L, Sun Y, Wang W, Wang X, Ye Y, et al. Interleukin-17 regulates the expressions of RANKL and OPG in human periodontal ligament cells via TRAF6/TBK1-JNK/NF- $\kappa$ B pathways. *Immunology.* 2015; 144(3):472–85.
24. Sato K, Suematsu A, Okamoto K, Yamaguchi A, Morishita Y, Kadono Y, et al. Th17 functions as an osteoclastogenic helper T cell subset that links T cell activation and bone destruction. *J Exp Med.* 2006; 203(12):2673–82. <https://doi.org/10.1084/jem.20061775> PMID: 17088434
25. Amatya N, Garg A V., Gaffen SL. IL-17 signaling: The Yin and the Yang. *Trends Immunol.* 2017; 38(5):310–22. <https://doi.org/10.1016/j.it.2017.01.006> PMID: 28254169
26. Gaffen SL. Structure and signalling in the IL-17 receptor family. *Nat Rev Immunol.* 2009; 9(8):556–67. <https://doi.org/10.1038/nri2586> PMID: 19575028
27. Yu JJ, Ruddy MJ, Wong GC, Sfintescu C, Baker PJ, Smith JB, et al. An essential role for IL-17 in preventing pathogen-initiated bone destruction: Recruitment of neutrophils to inflamed bone requires IL-17 receptor-dependent signals. *Blood.* 2007; 109(9):3794–802. <https://doi.org/10.1182/blood-2005-09-010116> PMID: 17202320
28. Cai Y, Shen X, Ding C, Qi C, Li K, Li X, et al. Pivotal Role of Dermal IL-17-producing  $\gamma\delta$  T Cells in Skin Inflammation. *Immunity.* 2011; 35(4):596–610. <https://doi.org/10.1016/j.immuni.2011.08.001> PMID: 21982596
29. Matsuzaki G, Umemura M. Interleukin-17 family cytokines in protective immunity against infections: role of hematopoietic cell-derived and non-hematopoietic cell-derived interleukin-17s. *Microbiol Immunol.* 2018; 62(1):1–13. <https://doi.org/10.1111/1348-0421.12560> PMID: 29205464
30. van der Fits L, Mourits S, Voerman JSA, Kant M, Boon L, Laman JD, et al. Imiquimod-Induced Psoriasis-Like Skin Inflammation in Mice Is Mediated via the IL-23/IL-17 Axis. *J Immunol.* 2009; 182(9):5836–45. <https://doi.org/10.4049/jimmunol.0802999> PMID: 19380832

31. Hamada S, Umemura M, Shiono T, Tanaka K, Yahagi A, Begum MD, et al. IL-17A Produced by  $\gamma\delta$  T Cells Plays a Critical Role in Innate Immunity against *Listeria monocytogenes* Infection in the Liver. *J Immunol*. 2008; 181(5):3456–63. <https://doi.org/10.4049/jimmunol.181.5.3456> PMID: 18714018
32. Lockhart E, Green AM, Flynn JL. IL-17 Production Is Dominated by  $\gamma\delta$  T Cells rather than CD4 T Cells during *Mycobacterium tuberculosis* Infection. *J Immunol*. 2006; 177(7):4662–9. <https://doi.org/10.4049/jimmunol.177.7.4662> PMID: 16982905
33. McMenamin C, Pimm C, McKersey M, Holt PG. Regulation of IgE responses to inhaled antigen in mice by antigen-specific  $\gamma\delta$  T cells. *Science*. 1994; 265(5180):1869–71. <https://doi.org/10.1126/science.7916481> PMID: 7916481
34. Misiak A, Wilk MM, Raverdeau M, Mills KHG. IL-17–Producing Innate and Pathogen-Specific Tissue Resident Memory  $\gamma\delta$  T Cells Expand in the Lungs of *Bordetella pertussis*–Infected Mice. *J Immunol*. 2017; 198(1):363–74. <https://doi.org/10.4049/jimmunol.1601024> PMID: 27864475
35. Mokuno Y, Matsuguchi T, Takano M, Nishimura H, Washizu J, Ogawa T, et al. Expression of toll-like receptor 2 on gamma delta T cells bearing invariant V gamma 6/V delta 1 induced by *Escherichia coli* infection in mice. *J Immunol*. 2000; 165(2):931–40. <https://doi.org/10.4049/jimmunol.165.2.931> PMID: 10878368
36. Murphy AG, O’Keeffe KM, Lalor SJ, Maher BM, Mills KHG, McLoughlin RM. *Staphylococcus aureus* Infection of Mice Expands a Population of Memory  $\gamma\delta$  T Cells That Are Protective against Subsequent Infection. *J Immunol*. 2014; 192(8):3697–708. <https://doi.org/10.4049/jimmunol.1303420> PMID: 24623128
37. O’Brien R, Roark CL, Born WK. IL-17-producing  $\gamma\delta$  T cells. *Eur J Immunol*. 2009; 39(3):662–6. <https://doi.org/10.1002/eji.200839120> PMID: 19283718
38. Romagnoli PA, Sheridan BS, Pham QM, Lefrançois L, Khanna KM. IL-17A-producing resident memory  $\gamma\delta$  T cells orchestrate the innate immune response to secondary oral *Listeria monocytogenes* infection. *Proc Natl Acad Sci U S A*. 2016; 113(30):8502–7. <https://doi.org/10.1073/pnas.1600713113> PMID: 27402748
39. Sheridan BS, Romagnoli PA, Pham QM, Fu HH, Alonzo F, Schubert WD, et al.  $\gamma\delta$  T Cells Exhibit Multifunctional and Protective Memory in Intestinal Tissues. *Immunity*. 2013; 39(1):184–95. <https://doi.org/10.1016/j.immuni.2013.06.015> PMID: 23890071
40. Shibata K, Yamada H, Hara H, Kishihara K, Yoshikai Y. Resident V $\delta$ 1 +  $\gamma\delta$  T Cells Control Early Infiltration of Neutrophils after *Escherichia coli* Infection via IL-17 Production. *J Immunol*. 2007; 178(7):4466–72. <https://doi.org/10.4049/jimmunol.178.7.4466> PMID: 17372004
41. Umemura M, Yahagi A, Hamada S, Begum MD, Watanabe H, Kawakami K, et al. IL-17-Mediated Regulation of Innate and Acquired Immune Response against Pulmonary *Mycobacterium bovis* Bacille Calmette-Guérin Infection. *J Immunol*. 2007; 178(6):3786–96. <https://doi.org/10.4049/jimmunol.178.6.3786> PMID: 17339477
42. Anne P, Sophie C, Jacinta B, F. WJ, Luyan L, Kyung LH, et al. Chronic Mucocutaneous Candidiasis in Humans with Inborn Errors of Interleukin-17 Immunity. *Science*. 2011 Apr 1; 332(6025):65–8. <https://doi.org/10.1126/science.1200439> PMID: 21350122
43. Dejima T, Shibata K, Yamada H, Hara H, Iwakura Y, Naito S, et al. Protective role of naturally occurring interleukin-17A-producing  $\gamma\delta$  cells in the Lung at the early stage of systemic candidiasis in mice. *Infect Immun*. 2011; 79(11):4503–10. <https://doi.org/10.1128/IAI.05799-11> PMID: 21875963
44. Wald S, Leibowitz A, Aizenbud Y, Saba Y, Zubeidat K, Barel O, et al.  $\gamma\delta$ T Cells Are Essential for Orthodontic Tooth Movement. *J Dent Res*. 2021; 100(7):731–8. <https://doi.org/10.1177/0022034520984774> PMID: 33478315
45. Yoshiki R, Kabashima K, Honda T, Nakamizo S, Sawada Y, Sugita K, et al. IL-23 from langerhans cells is required for the development of imiquimod-induced psoriasis-like dermatitis by induction of IL-17A-producing  $\gamma\delta$  T cells. *J Invest Dermatol*. 2014; 134(7):1912–21. <https://doi.org/10.1038/jid.2014.98> PMID: 24569709
46. Sandrock I, Reinhardt A, Ravens S, Binz C, Wilharm A, Martins J, et al. Genetic models reveal origin, persistence and nonredundant functions of IL-17-producing  $\gamma\delta$  T cells. *J Exp Med*. 2018; 215(12):3006–18. <https://doi.org/10.1084/jem.20181439> PMID: 30455268
47. Akitsu A, Ishigame H, Kakuta S, Chung SH, Ikeda S, Shimizu K, et al. IL-1 receptor antagonist-deficient mice develop autoimmune arthritis due to intrinsic activation of IL-17-producing CCR2+ V $\gamma$ 6+  $\gamma\delta$ T cells. *Nat Commun*. 2015; 6(7464).
48. Reinhardt A, Yevsa T, Worbs T, Lienenklaus S, Sandrock I, Oberdörfer L, et al. Interleukin-23–Dependent  $\gamma\delta$  T Cells Produce Interleukin-17 and Accumulate in the Enthesis, Aortic Valve, and Ciliary Body in Mice. *Arthritis Rheumatol*. 2016; 68(10):2476–86. <https://doi.org/10.1002/art.39732> PMID: 27111864

49. Roark CL, French JD, Taylor MA, Bendele AM, Born WK, O'Brien R. Exacerbation of Collagen-Induced Arthritis by Oligoclonal, IL-17-Producing  $\gamma\delta$  T Cells. *J Immunol*. 2007; 179(8):5576–83. <https://doi.org/10.4049/jimmunol.179.8.5576> PMID: 17911645
50. Malik S, Want MY, Awasthi A. The emerging roles of gamma-delta T cells in tissue inflammation in experimental autoimmune encephalomyelitis. *Front Immunol*. 2016;7(14). <https://doi.org/10.3389/fimmu.2016.00007> PMID: 26834748
51. Papotto PH, Gonçalves-Sousa N, Schmolka N, Iseppon A, Mensurado S, Stockinger B, et al. IL-23 drives differentiation of peripheral  $\gamma\delta$ 17 T cells from adult bone marrow-derived precursors. *EMBO Rep*. 2017; 18(11):1957–67. <https://doi.org/10.15252/embr.201744200> PMID: 28855306
52. Petermann F, Rothhammer V, Claussen MC, Haas JD, Blanco LR, Heink S, et al.  $\gamma\delta$  T Cells Enhance Autoimmunity by Restraining Regulatory T Cell Responses via an Interleukin-23-Dependent Mechanism. *Immunity*. 2010; 33(3):351–63. <https://doi.org/10.1016/j.immuni.2010.08.013> PMID: 20832339
53. Sutton CE, Lallor SJ, Sweeney CM, Brereton CF, Lavelle EC, Mills KHG. Interleukin-1 and IL-23 Induce Innate IL-17 Production from  $\gamma\delta$  T Cells, Amplifying Th17 Responses and Autoimmunity. *Immunity*. 2009; 31(2):331–41. <https://doi.org/10.1016/j.immuni.2009.08.001> PMID: 19682929
54. Krishnan S, Prise IE, Wemyss K, Schenck LP, Bridgeman HM, McClure FA, et al. Amphiregulin-producing  $\gamma\delta$  T cells are vital for safeguarding oral barrier immune homeostasis. *Proc Natl Acad Sci U S A*. 2018; 115(42):10738–43. <https://doi.org/10.1073/pnas.1802320115> PMID: 30279177
55. Dalton JE, Cruickshank SM, Egan CE, Mears R, Newton DJ, Andrew EM, et al. Intraepithelial  $\gamma\delta$ + Lymphocytes Maintain the Integrity of Intestinal Epithelial Tight Junctions in Response to Infection. *Gastroenterology*. 2006; 131(3):818–29. <https://doi.org/10.1053/j.gastro.2006.06.003> PMID: 16952551
56. Jameson JM, Ugarte K, Chen N, Yachi P, Fuchs E, Boismenu R, et al. A role for skin  $\gamma\delta$  T cells in wound repair. *Science*. 2002; 296(5568):747–9. <https://doi.org/10.1126/science.1069639> PMID: 11976459
57. Ismail AS, Severson KM, Vaishnava S, Behrendt CL, Yu X, Benjamin JL, et al.  $\gamma\delta$  Intraepithelial Lymphocytes Are Essential Mediators of Host-Microbial Homeostasis At the Intestinal Mucosal Surface. *Proc Natl Acad Sci U S A*. 2011; 108(21):8743–8. <https://doi.org/10.1073/pnas.1019574108> PMID: 21555560
58. Abe T, Hajishengallis G. Optimization of the ligature-induced periodontitis model in mice. *J Immunol Methods*. 2013; 394(1–2):49–54. <https://doi.org/10.1016/j.jim.2013.05.002> PMID: 23672778
59. de Molon RS, de Avila ED, Boas Nogueira AV, Chaves de Souza JA, Avila-Campos MJ, de Andrade CR, et al. Evaluation of the Host Response in Various Models of Induced Periodontal Disease in Mice. *J Periodontol*. 2014; 85(3):465–77. <https://doi.org/10.1902/jop.2013.130225> PMID: 23805811
60. Baker PJ, Evans RT, Roopenian DC. Oral infection with *Porphyromonas gingivalis* and induced alveolar bone loss in immunocompetent and severe combined immunodeficient mice. *Arch Oral Biol*. 1994; 39(12):1035–40. [https://doi.org/10.1016/0003-9969\(94\)90055-8](https://doi.org/10.1016/0003-9969(94)90055-8) PMID: 7717884
61. Halleen JM, Räsänen S, Salo JJ, Reddy S V., Roodman GD, Hentunen TA, et al. Intracellular fragmentation of bone resorption products by reactive oxygen species generated by osteoclastic tartrate-resistant acid phosphatase. *J Biol Chem*. 1999; 274(33):22907–10. <https://doi.org/10.1074/jbc.274.33.22907> PMID: 10438453
62. Nassar M, Tabib Y, Capucha T, Mizraji G, Nir T, Pevsner-Fischer M, et al. GAS6 is a key homeostatic immunological regulator of host-commensal interactions in the oral mucosa. *Proc Natl Acad Sci U S A*. 2017; 114(3):E337–46. <https://doi.org/10.1073/pnas.1614926114> PMID: 28049839
63. Nakamura YS, Hakeda Y, Takakura N, Kameda T, Hamaguchi I, Miyamoto T, et al. Tyro 3 receptor tyrosine kinase and its ligand, Gas6, stimulate the function of osteoclasts. *Stem Cells*. 1998; 16(3):229–38. <https://doi.org/10.1002/stem.160229> PMID: 9617898
64. Stark MA, Huo Y, Burcin TL, Morris MA, Olson TS, Ley K. Phagocytosis of apoptotic neutrophils regulates granulopoiesis via IL-23 and IL-17. *Immunity*. 2005; 22(3):285–94. <https://doi.org/10.1016/j.immuni.2005.01.011> PMID: 15780986
65. Ley K. Breaking a Vicious Cycle. *N Engl J Med*. 2017; 376(12):1172–4. <https://doi.org/10.1056/NEJMe1615654> PMID: 28328336
66. Serhan CN, Chiang N, Van Dyke TE. Resolving inflammation: Dual anti-inflammatory and pro-resolution lipid mediators. *Nat Rev Immunol*. 2008; 8(5):349–61. <https://doi.org/10.1038/nri2294> PMID: 18437155
67. Rani M, Zhang Q, Oppeltz RF, Schwacha MG. Gamma Delta T Cells Regulate Inflammatory Cell Infiltration of the Lung after Trauma-Hemorrhage. *Shock*. 2015; 43(6):589–97. <https://doi.org/10.1097/SHK.0000000000000358> PMID: 25692261



68. Baker PJ, Dixon M, Evans RT, Dufour L, Johnson E, Roopenian DC. CD4+ T cells and the proinflammatory cytokines gamma interferon and interleukin-6 contribute to alveolar bone loss in mice. *Infect Immun*. 1999; 67(6):2804–9. <https://doi.org/10.1128/IAI.67.6.2804-2809.1999> PMID: 10338484
69. Teng YTA, Nguyen H, Gao X, Kong YY, Gorczynski RM, Singh B, et al. Functional human T-cell immunity and osteoprotegerin ligand control alveolar bone destruction in periodontal infection. *J Clin Invest*. 2000;106(6). <https://doi.org/10.1172/jci10763> PMID: 10995794
70. Dutzan N, Konkel JE, Greenwell-Wild T, Moutsopoulos NM. Characterization of the human immune cell network at the gingival barrier. *Mucosal Immunol*. 2016; 9(5):1163–72. <https://doi.org/10.1038/mi.2015.136> PMID: 26732676
71. Johnson RB, Wood N, Serio FG. Interleukin-11 and IL-17 and the pathogenesis of periodontal disease. *J Periodontol*. 2004 Jan; 75(1):37–43. <https://doi.org/10.1902/jop.2004.75.1.37> PMID: 15025215
72. Lester SR, Bain JL, Johnson RB, Serio FG. Gingival concentrations of interleukin-23 and -17 at healthy sites and at sites of clinical attachment loss. *J Periodontol*. 2007 Aug; 78(8):1545–50. <https://doi.org/10.1902/jop.2007.060458> PMID: 17668974
73. Dutzan N, Vernal R, Vaque JP, García-Sesnich J, Hernandez M, Abusleme L, et al. Interleukin-21 expression and its association with proinflammatory cytokines in untreated chronic periodontitis patients. *J Periodontol*. 2012 Jul; 83(7):948–54. <https://doi.org/10.1902/jop.2011.110482> PMID: 22181687
74. Moutsopoulos NM, Konkel JE. Tissue-Specific Immunity at the Oral Mucosal Barrier. *Trends Immunol*. 2018; 39(4):276–87. <https://doi.org/10.1016/j.it.2017.08.005> PMID: 28923364
75. Dutzan N, Abusleme L, Bridgeman H, Greenwell-Wild T, Zangerle-Murray T, Fife ME, et al. On-going Mechanical Damage from Mastication Drives Homeostatic Th17 Cell Responses at the Oral Barrier. *Immunity*. 2017; 46(1):133–47. <https://doi.org/10.1016/j.immuni.2016.12.010> PMID: 28087239
76. Zenobia C, Luo XL, Hashim A, Abe T, Jin L, Chang Y, et al. Commensal bacteria-dependent select expression of CXCL2 contributes to periodontal tissue homeostasis. *Cell Microbiol*. 2013; 15(8):1419–26. <https://doi.org/10.1111/cmi.12127> PMID: 23433011
77. Prinz I, Sansoni A, Kissenpfennig A, Ardouin L, Malissen M, Malissen B. Visualization of the earliest steps of  $\gamma\delta$  T cell development in the adult thymus. *Nat Immunol*. 2006; 7(9):995–1003. <https://doi.org/10.1038/ni1371> PMID: 16878135
78. Itohara S, Mombaerts P, Lafaille J, Iacomini J, Nelson A, Clarke AR, et al. T cell receptor  $\delta$  gene mutant mice: Independent generation of  $\alpha\beta$  T cells and programmed rearrangements of  $\gamma\delta$  TCR genes. *Cell*. 1993; 72(3):337–48. [https://doi.org/10.1016/0092-8674\(93\)90112-4](https://doi.org/10.1016/0092-8674(93)90112-4) PMID: 8381716