

RESEARCH

Open Access



# Spatio-temporal modelling of malaria mortality in India from 2004 to 2013 from the Million Death Study

Sayantee Jana<sup>1,2\*</sup> , Sze Hang Fu<sup>3</sup>, Hellen Gelband<sup>3</sup>, Patrick Brown<sup>3,4</sup> and Prabhat Jha<sup>3,5</sup>

## Abstract

**Background:** India has a substantial burden of malaria, concentrated in specific areas and population groups. Spatio-temporal modelling of deaths due to malaria in India is a critical tool for identifying high-risk groups for effective resource allocation and disease control policy-making, and subsequently for the country's progress towards United Nations 2030 Sustainable Development Goals.

**Methods:** In this study, a spatio-temporal model with the objective of understanding the spatial distribution of malaria mortality rates and the rate of temporal decline, across the country, has been constructed. A spatio-temporal "random slope" model was used, with malaria risk depending on a spatial relative risk surface and a linear time effect with a spatially-varying coefficient. The models were adjusted for urban/rural status (residence of the deceased) and Normalized Difference Vegetation Index (NDVI), using 2004–13 data from the Million Death Study (MDS) (the most recent data available), with nationwide geographic coverage. Previous studies based on MDS had focused only on aggregated analyses.

**Results:** The rural population had twice the risk of death due to malaria compared to the urban population. Malaria mortality in some of the highest-risk regions, namely the states of Odisha and Jharkhand, are declining faster than other areas; however, the rate of decline was not uniformly correlated with the level of risk. The overall decline was faster after 2010.

**Conclusion:** The results suggest a need for increased attention in high-risk rural populations, which already face challenges like inadequate infrastructure, inaccessibility to health care facilities, awareness, and education around malaria mortality and prevalence. It also points to the urgent need to restart the MDS to document changes since 2013, to develop appropriate malaria control measures.

**Keywords:** Spatio-temporal modelling, India, Million Death Study, Malaria mortality

## Background

Malaria contributes not only to the global infectious disease burden, but has serious economic consequences borne largely by those in their financially productive ages. Verbal autopsy studies in India report a national estimate of 130,000 malaria deaths before 70 years of age in 2015

[1], down from about 200,000 deaths at these ages in 2005 [2]. Malaria, like most other vector-borne diseases, is characterized by spatial and temporal variations due to climatic, ecological, and human factors. These variables can help predict spatio-temporal patterns of the disease and identify hot-spots to enable efficient disease monitoring, cost-effective allocation of resources, and ultimately, effective disease control [3–7].

Environmental factors are not solely determinative of the spatio-temporal distribution of vector-borne

\*Correspondence: sayantee.jana@math.iith.ac.in

<sup>1</sup> Indian Institute of Technology, Hyderabad, India

Full list of author information is available at the end of the article



© The Author(s) 2022. **Open Access** This article is licensed under a Creative Commons Attribution 4.0 International License, which permits use, sharing, adaptation, distribution and reproduction in any medium or format, as long as you give appropriate credit to the original author(s) and the source, provide a link to the Creative Commons licence, and indicate if changes were made. The images or other third party material in this article are included in the article's Creative Commons licence, unless indicated otherwise in a credit line to the material. If material is not included in the article's Creative Commons licence and your intended use is not permitted by statutory regulation or exceeds the permitted use, you will need to obtain permission directly from the copyright holder. To view a copy of this licence, visit <http://creativecommons.org/licenses/by/4.0/>. The Creative Commons Public Domain Dedication waiver (<http://creativecommons.org/publicdomain/zero/1.0/>) applies to the data made available in this article, unless otherwise stated in a credit line to the data.

diseases. Political and state borders also play a major role, as they determine spatial distribution and implementation of control and prevention programmes. This is illustrated by a spatio-temporal study in Northern Thailand, where malaria incidence patterns contrast sharply with bordering Myanmar [5]. Furthermore, it has been argued that local disease variations cannot be accounted for by environmental or biological indicators alone [4].

Much of the current literature on spatio-temporal variation in risk of diseases uses ecologically-defined risk factors, i.e., average income by census area or satellite-based land use categories, to explain disease dynamics [7–10]. An advantage of this type of research is that data on spatio-temporal risk factors may be publicly available without the need for new data collection [3, 8]. Moreover, spatial analyses can illuminate correlations of geographical areas and small-area variations [11].

A few studies have investigated spatial and spatio-temporal distributions of malaria in specific states or districts of India [3, 12–17]. However, no other study seems to have explored spatio-temporal distribution across the entire country using actual mortality data for over a decade.

In this study, spatio-temporal models for malaria mortality in India, have been constructed, to investigate temporal trends and spatial distribution, with the aim of identifying the more vulnerable populations and regions. The rate of change in malaria mortality in high- and low-burden areas was also assessed. Particular emphasis has been put on the high-burden states, namely, Odisha, Jharkhand, Chhattisgarh, Madhya Pradesh and the North-eastern states, in the exploratory analysis.

## Methods

### Data sources

This study uses data from India's largest mortality survey, the Million Death Study (MDS), where data were collected by the Registrar General of India's (RGI's) Sample Registration System (SRS) in collaboration with the University of Toronto's Centre for Global Health Research (CGHR) for the years 1998 to 2017. The RGI divides the country into 1 million small areas based on the 10-year censuses of 1991, 2001, and 2011, respectively, for the three different sampling frames [18]. About 8,000 of these small areas are randomly selected by the SRS and all births and deaths are monitored in about 1.3 million households in each round. The SRS sampling units are densely spread across the country (Additional file 1: Appendix A.2). Deaths in urban areas were geocoded to postal codes and deaths in the rural areas were geocoded to village locations. Because of greater inaccuracies in assigning cause of death (COD) in older adults

[18–22], in this study, the focus is on deaths of people under 70 years of age. Results for older ages are provided in Table 1. Deaths with ICD-10 [23] codes B50-54 were assigned as death due to malaria. The data was collected during 2004–2013 by MDS, which had 7597 sampling units, of which 7416 were geocoded. Of these 7377 geocoded sampling units from the mainland, after excluding island units, were included. More recent data, that is, data beyond 2013 from MDS is not available. The MDS data were collected twice a year through verbal autopsies (VAs). Respondents from each household with a death in the last six months were interviewed by one of about 900 non-medical trained staff to gather information on the circumstances, symptoms, and treatments before death of household members, including a half-page local language narrative. These paper records were converted to electronic form and randomly assigned independently to two of 400 specially trained physician coders to assign the cause of death according to ICD-10, with differences undergoing anonymous reconciliation, and persisting differences adjudicated by a senior physician [24]. The VA uses a modified version of the WHO 2012 VA instrument which yields similar results to the longer WHO form [19]. United Nations (UN) population figures for India were used to calculate the age- and sex-specific death rates by applying the proportion of malaria deaths (weighted for sampling design) to the UN death totals in each year. Sub-national estimates of deaths used the relative SRS death rates applied to these UN totals.

### Spatio-temporal modelling

Generalized Linear Geostatistical Models (GLGMs), proposed by Diggle, Moyeed, and Tawn [25], were used to model non-Gaussian spatial data [26]. The number of deaths in each sampling unit and each year, were modelled with a Poisson distribution with the mean being the product of an age-adjusted expected count and a spatially- and temporally-varying relative risk. The relative risk contains an urban–rural effect, a non-parametric time trend for years, an effect for Normalized Difference Vegetation Index (NDVI), a spatially-varying risk surface, which is a spatially-varying random effect, meant to account for unobserved spatial risk factors, and a linear time trend with a spatially varying slope, also a random effect. It is this final term which captures spatio-temporal variation: a location having a value of zero for this second spatial surface is following the national time trend, and regions with negative or positive values for this surface have malaria rates declining more rapidly or more slowly, respectively, than the national average. The two spatial surfaces have Matérn correlation functions, where the correlation between two locations is a decreasing

**Table 1** Malaria-attributed deaths from MDS (2004–13) by age-groups

Age Group	Deaths attributed to malaria	All coded deaths	Proportion of malaria deaths out of all deaths	Died in a health facility	Rural
2004–2006					
1–59 months	585	11,480	5.1	91	523
5–14 years	382	4311	8.9	77	338
15–29 years	377	8939	4.2	129	314
30–44 years	305	11,728	2.6	87	250
45–59 years	422	18,684	2.3	71	344
60–69 years	500	21,788	2.3	46	430
> 70 years	730	40,783	1.8	46	627
2007–2010					
1–59 months	656	12,600	5.2	146	593
5–14 years	376	4573	8.2	107	314
15–29 years	507	13,052	3.9	167	412
30–44 years	398	17,838	2.2	118	313
45–59 years	586	29,266	2	106	484
60–69 years	644	33,115	1.9	77	559
> 70 years	1041	62,028	1.7	72	893
2010–2013					
1–59 months	282	5909	4.8	74	246
5–14 years	173	2469	7	62	156
15–29 years	296	8976	3.3	110	244
30–44 years	296	12,586	2.4	78	241
45–59 years	403	22,439	1.8	94	328
60–69 years	427	25,482	1.7	64	363
> 70 years	701	50,074	1.4	49	580

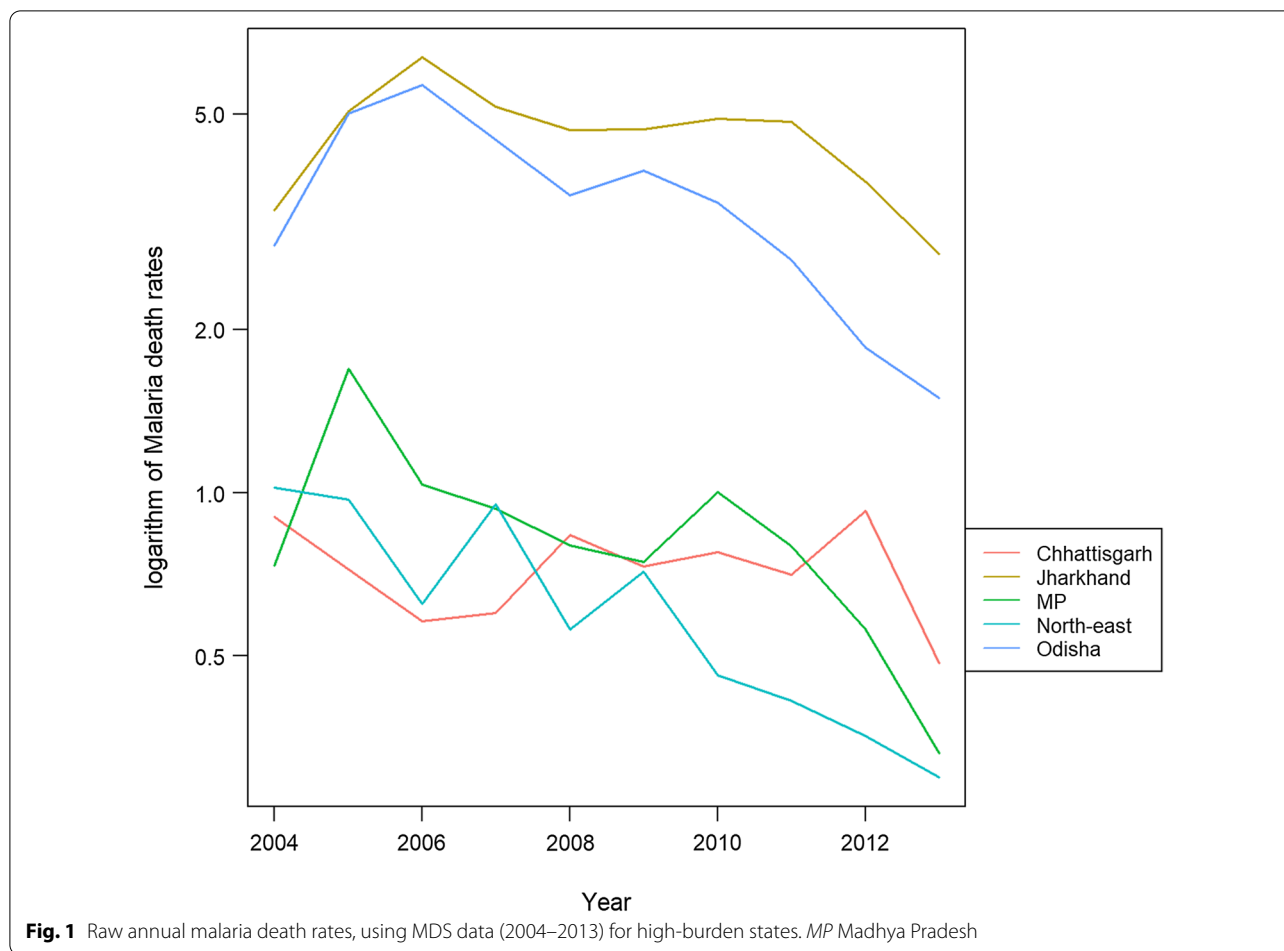
function of the distance between the locations. A spatially-independent unit-level random effect was also included to account for possible overdispersion. Bayesian inference via Integrated Nested Laplace Approximation (or INLA) [27] was used for model fitting. Besides being relatively simple, INLA models are accurate, very fast to run, and their model diagnostics and predictive measures are simple to implement [28]. Details of the model are provided in Additional file 1: Appendix A.1.

The correlation between the spatial relative risk and the spatially-varying random time trend quantifies the relationship between malaria prevalence at baseline and changes in prevalence over time. Were it the case that the highest-risk areas are catching up to the rest of India and improving more quickly, the correlation would be negative as high spatial relative risk would coincide with negative values of the time trend. The posterior correlation between the two spatial random effects was calculated by generating 700 posterior samples and computing the empirical correlation between the two spatial effects.

## Results

Annual malaria death rates from the MDS decreased over the 2004–13 period, with the pattern of decrease varying across different high-burden states (Fig. 1). Table 1 presents the national figures for the proportion of malaria deaths, and of those how many were health-facility deaths and rural deaths, by age-group. Similar tables for the high-burden states have been included in Additional file 1: Appendix A.4.

A surprising finding by Dhingra et al. [2] using the MDS data was the U-shaped age-specific mortality pattern for malaria, with mortality rising at older age groups, contrary to earlier assumptions that malaria mortality is highest in young children and remains low throughout the rest of life in high-transmission areas. A similar U-shaped pattern for malaria mortality in the individual high-burden states, was observed, both in urban and rural stratifications (Fig. 2), and for males and females. Rural populations are at twice the risk of



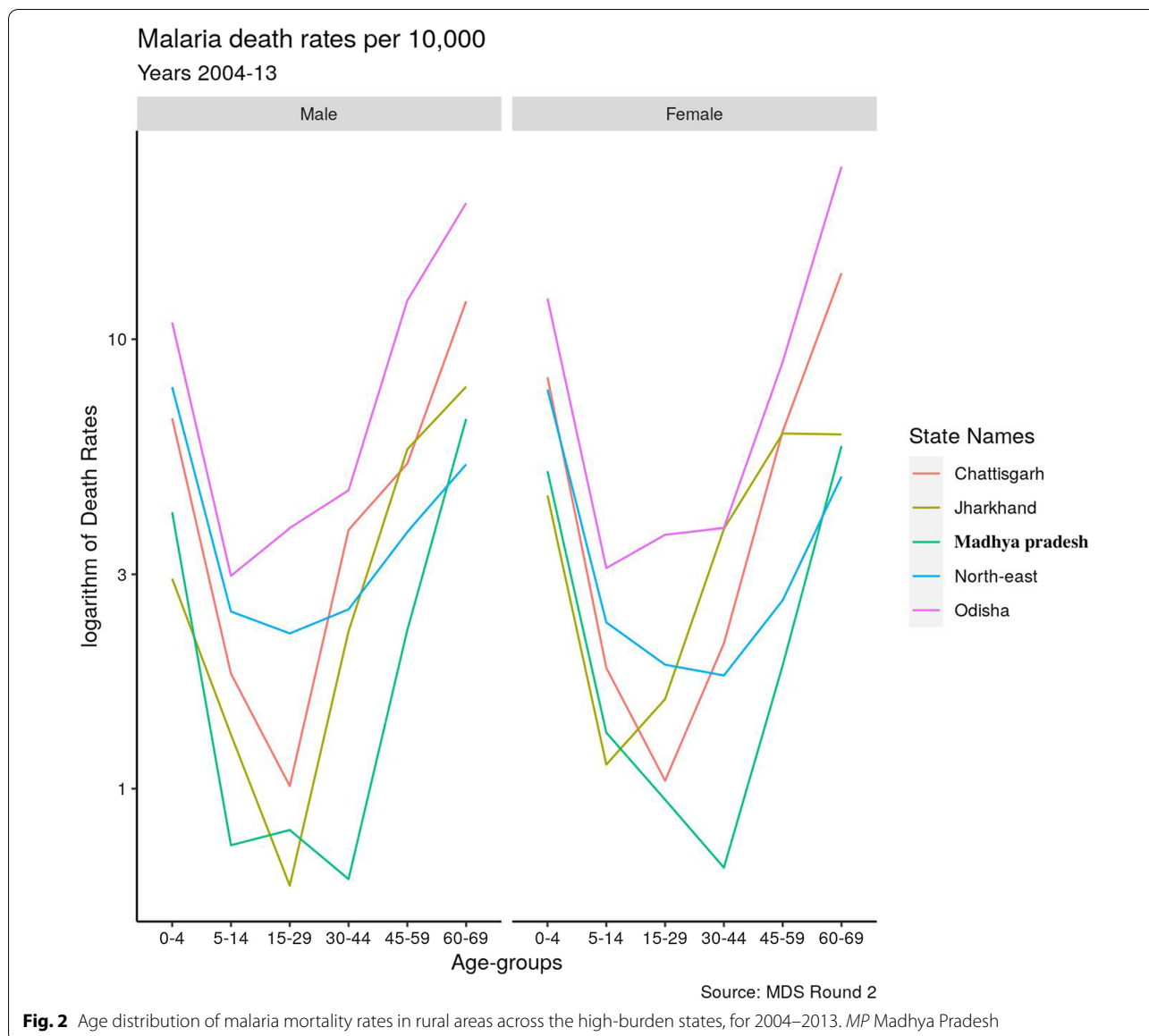
urban populations across all five high-burden states (Additional file 1: Appendix), which we explore further in the spatio-temporal models. Among the high-burden states, Odisha is uniformly highest across age groups and also across urban and rural stratifications. The North-eastern states are second behind Odisha for younger age groups but comparable to other states above age 44. Females are at a slightly higher risk than males.

The predicted spatial maps for the high-burden states, from the posterior samples of malaria mortality for the years 2004 and 2013 are presented in Fig. 3. The decline in the risk of malaria mortality over the years is evident across the high-burden states. A summary of the estimated model parameters is presented in Table 2.

Table 2 presents the parameter estimates and 95% credible intervals for the hyperparameters of the spatio-temporal models. The details of the model and its parameters are provided in Additional file 1: Appendix A.1. Compared to the rural population, the urban population is at a  $1 - \exp(-0.618) * 100 = 47\%$  decreased risk of dying of malaria. This is consistent with findings

in the exploratory analysis, where it was observed that the rural population is more vulnerable than the urban population. The posterior quantiles, that is the 95% quantiles from the posterior distribution, of the correlation between the two spatial effects is shown in the rows marked “spatio-temporal correlation” in Table 2, and the correlation is not significantly different from zero. Figure 4 confirms an overall temporal decline in malaria mortality.

The spatial distribution of annual decline in malaria mortality rates are presented in Fig. 5. In Fig. 5B, the red and orange regions with positive log relative risk (RR) values indicate increased risk of malaria mortality in these regions. The blue and green regions with negative log RR indicate regions with lower risk of malaria mortality. Figure 5B illustrates the rate of change of mortality risks across the country from 2004- 2013. Positive rate of declining mortality (i.e., faster) is denoted in orange, and negative rate of mortality decline (i.e., slower) is denoted in blue. The rate of decline is fastest in regions with the highest burden: Odisha and Jharkhand. However, the rate of decline is



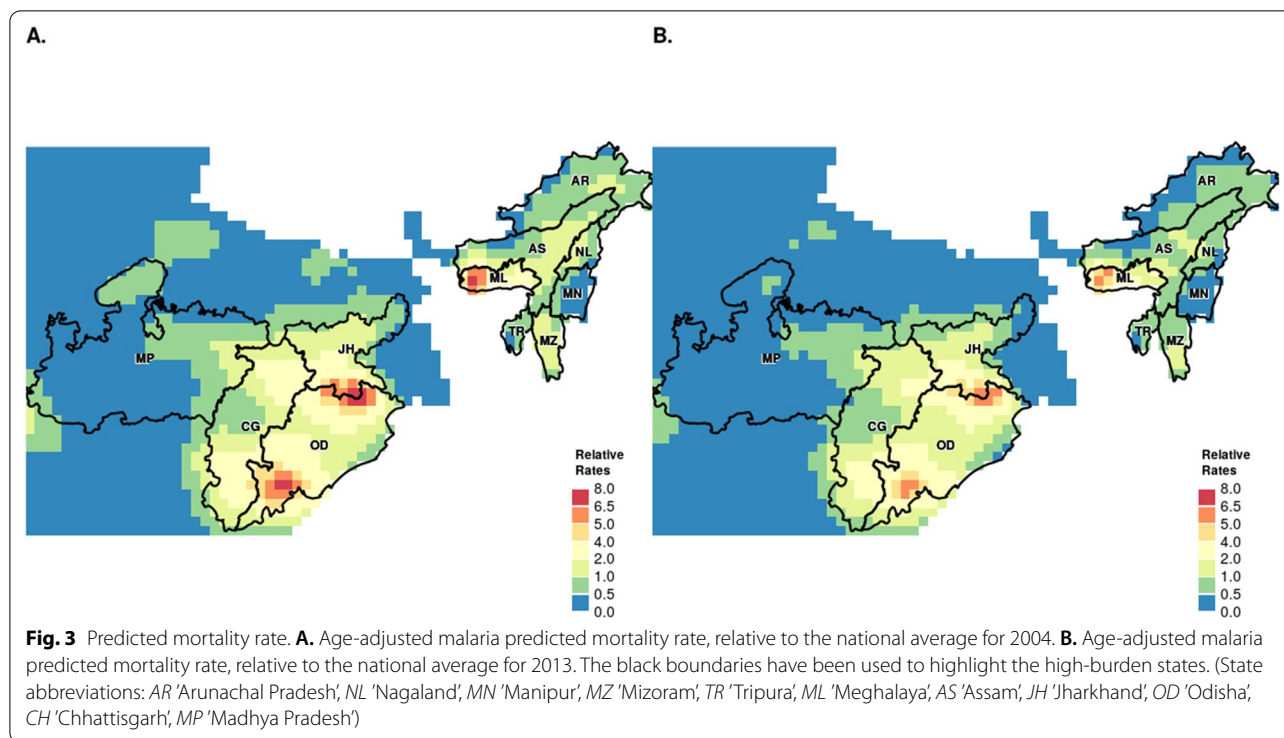
one of the slowest in the north-eastern states, despite it being one of the higher-risk regions. Outside of the five high-burden states, the rate of decline is the slowest in southern states of Tamil Nadu and Kerala. The rate of decline in the northern states, especially in the states of Uttar Pradesh and Bihar, is at par with those in Odisha and Jharkhand.

**Discussion**

Malaria mortality data from the Indian MDS for the years 2004–2013, were analysed, with spatio-temporal models to study trends in space and time, by sex, urban/rural setting, and NDVI. Malaria mortality data from the MDS for years 1998–2003, analysed by Dhingra et al. [2] included

age distribution, spatial distribution, and proportion of home deaths. U-shaped patterns similar to Dhingra et al. [2] were observed in the high-burden states, and across all age-groups and sex-specific strata. In exploratory analysis, it was observed that the rural population had twice the risk of malaria mortality than urban dwellers. The difference is consistent geographically, by age group, and over time. Of note is that about a quarter of these deaths occurred in health facilities (Table 1).

Spatio-temporal studies have been helpful in directing malaria control strategies in other countries, e.g., a study in Bhutan indicated a need to prioritize high-risk clusters of the disease [29]; in Nepal, a spatio-temporal study on malaria led to the conclusion that preventive



**Table 2** Parameter estimates (posterior medians) and 95% credible intervals of log Relative Risk and variance parameters from the spatio-temporal model

Model parameters	Estimate	95% CI <sup>a</sup>
Urban/Rural status (reference: Rural)	-0.618	(-0.735, 0.504)
NDVI	0.688	(0.100, 1.279)
Temporal standard deviation	0.003	(0.002, 0.007)
Spatio-temporal standard deviation	0.008	(0.004, 0.023)
Spatial-temporal Range	15.600	(3.680, 90.500)
Standard deviation for SRS units random effect	0.536	(0.481, 0.610)
Spatial standard deviation	1.101	(0.928, 1.355)
Spatial Range (km)	12.100	(9.5200, 16.100)
Spatio-temporal correlation	0.006	(-0.250, 0.262)
Intercept	-0.520	(-1.131, 0.040)

<sup>a</sup> CI Credible interval, The 95% CIs are based on posterior 2.5th and 97.5th quantiles

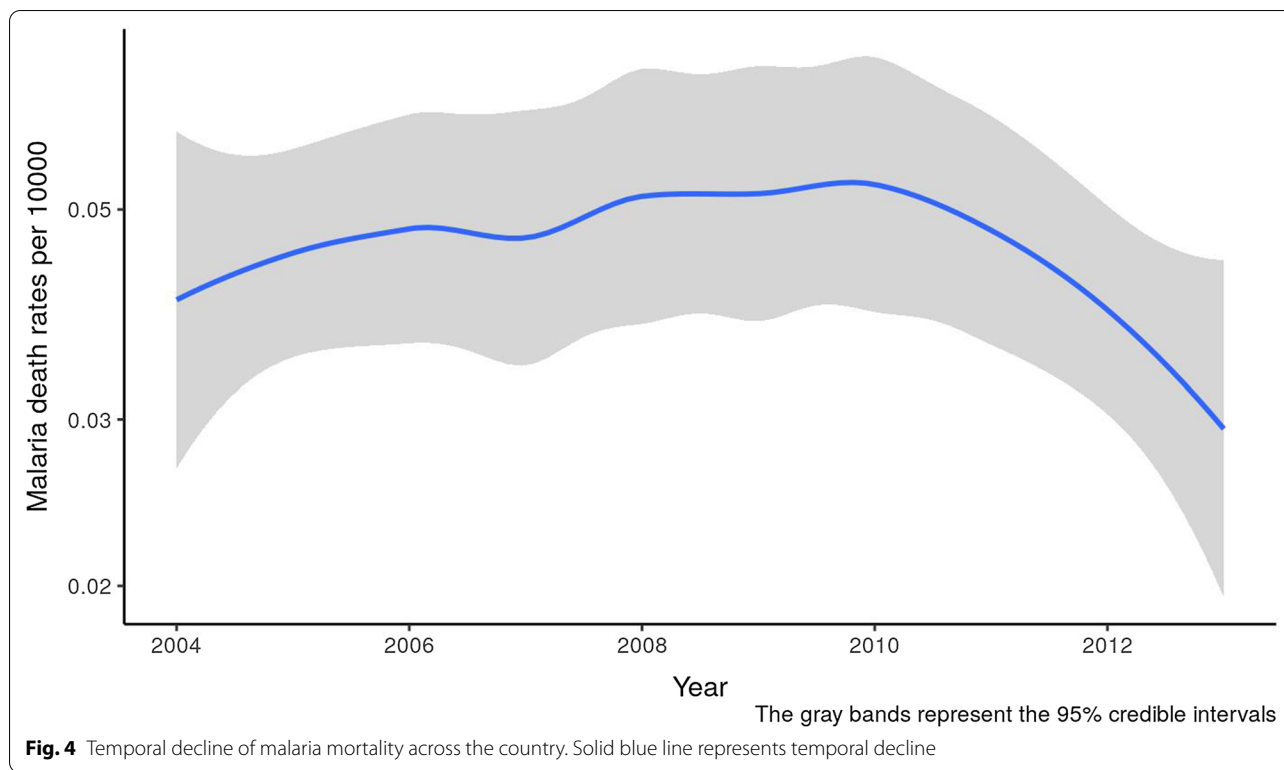
measures should be scaled up to entire districts and not just high endemicity areas [30]. All spatio-temporal studies have noted strong seasonal malaria patterns [4–6, 29, 30]. Other studies have claimed that climatic factors such as temperature, rainfall, humidity, vapour pressure, and wind velocity are significant predictors of spatio-temporal distribution of malaria [7, 31, 32]. Spatio-temporal studies in malaria from different countries have

documented an overall declining trend, consistent with global statistics [33].

The spatio-temporal analysis in this study confirms the high-burden states as identified by earlier studies. The results highlight that the rate of decline in malaria mortality was fastest in the highest-burden states of Odisha and Jharkhand. However, for the north east states the rate of decline was one of the slowest. The improvement in Odisha might be attributed to employing auxiliary nurse midwives (ANMs) and accredited social health activist (ASHAs) to deliver artemisinin-combination therapy (ACT) and perform rapid diagnostic tests (RDTs), under the new malaria treatment policy of 2010 [34]. The spatio-temporal model estimates confirmed that the rural populations were at a higher risk of malaria mortality.

A central hypothesis of this work was that malaria mortality rates had declined fastest where malaria mortality was more prevalent. The spatio-temporal model found this not to be the case—in relative terms declines were uniform across India. In absolute terms declines were greater in the high-risk areas, as a 10% decline from a high baseline is a larger mortality reduction per unit of population than a comparable decline in a low-risk area.

Malaria mortality data from the MDS are consistent with data from the NVBDCP [35] in identifying high-burden states (Additional file 1: Appendix A.3). A common feature of these states is the dominance of tribal populations, which are often less accessible, and lack



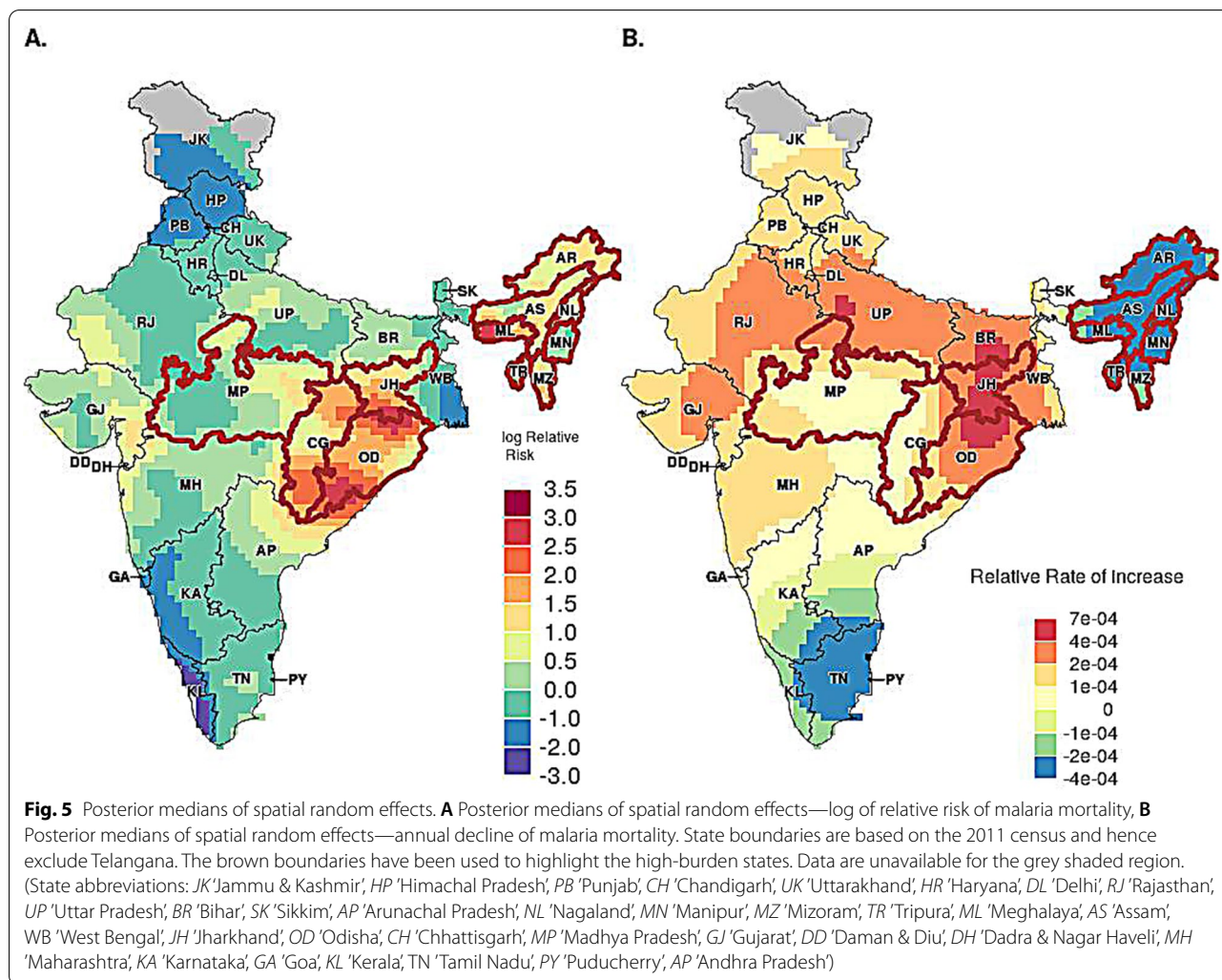
adequate infrastructure and disease surveillance compared to other areas. Other studies have also observed tribal populations to be more vulnerable to the disease [36]. Ahmad et al. [3] have provided evidence of malaria-affected regions in Jharkhand, which has a tribal-dominant population. In the current study, tribal versus non-tribal regions have not been compared, but this could be done in the future. Future studies could also compare the variation in spatio-temporal distribution between children and adults. Earlier studies from different states of India present contradictory results on the comparison of malaria incidence among children and adults [15, 37–39]. For example, in the state of Rajasthan and in some of the north-eastern states, namely Assam and Arunachal Pradesh, children had a higher incidence of malaria, whereas it was an entirely opposite scenario in the indo-gangetic plains, where adults were more vulnerable than children [40].

This study has some limitations. One is the reliance of the MDS on VA, which have some potential biases, because of a lack of medically-certified causes of deaths. There are both pros and cons of VA methods [24]. Misclassification of acute febrile deaths by VA among medically unattended adults is not unexpected, and likely results in malaria being over-diagnosed in some cases and under-diagnosed in others [1, 2]. Since this study relied only on mortality data, and comparable incidence

data were not available, therefore case fatality ratios across space and time could not be compared. Another limitation is that the current INLA model for the spatio-temporal analyses of malaria mortality does not accommodate analysing seasonality. One future direction of research could be adding seasonality for spatio-temporal modelling in the INLA. Finally, progress has been made in malaria control in some areas over the past few years, so this analysis should be updated as new data become available, and new interventions and policies should reflect current conditions, to the extent possible.

### Conclusion

The analysis and models presented in this paper assessed spatial and temporal dynamics of malaria mortality across all age groups and for males and females, in India, from 2004 to 2013, using death records from a decade-long household mortality survey — the Million Death Study. Some spatial and temporal variations were observed across the country. Spatial variations vary across the time period, but there is an overall declining trend across the country. The high-burden states identified by earlier studies were confirmed as high-risk regions in this study. Lack of spatio-temporal correlation established that there is no association between the temporal trends and risk of malaria mortality in a region.



These results suggest that control programmes and strategies with greater emphasis may be required in some parts of the country. The analyses presented in this paper should help state and national malaria control efforts better target high-risk areas and populations, towards the goal of eventual malaria elimination from India. Collection and release of more current data will be needed to address the situation appropriately, however.

**Abbreviations**

MDS: Million Deaths Study; RG: Registrar General of India; COD: Cause of death; SRS: Sample Registration System; CGHR: Centre for Global Health Research; VA: Verbal Autopsy; ICD-10: International Statistical Classification of Diseases and Related Health Problems 10th Revision; WHO: World Health Organization; UN: United Nations; GLGM: Generalized Linear Geostatistical Models; INLA: Integrated Nested Laplace Approximation; RR: Relative Risk; CI: Credible Interval.

**Supplementary Information**

The online version contains supplementary material available at <https://doi.org/10.1186/s12936-022-04112-x>.

**Additional file 1.** Appendices.

**Acknowledgements**

We thank Peter Rodriguez for data support.

**Authors' contributions**

All authors contributed to development of the manuscript. SJ carried out the analysis with support from SHF and PB, conceptualized, and drafted the manuscript. SHF cleaned and prepared the dataset for analysis, developed codes for some supplementary analysis. HG supervised in the manuscript development stage. She supervised and mentored the QES-SAVE project. PB designed and optimized statistical analyses for this work. He supervised and mentored during the analysis and manuscript development stage. PJ conceived the original concept and initiated the work. All authors read and approved the final manuscript.

**Funding**

SJ was funded by the Queen Elizabeth Scholarship-Statistical Alliance for Vital Events (QES-SAVE) 2019 program under the Canadian Queen Elizabeth



II Diamond Jubilee Advanced Scholars Program (QES) and supported by the Office of Global Public Health Education & Training, Dalla Lana School of Public Health, University of Toronto and the Centre for Global Health Research, St. Michael's Hospital and University of Toronto (CGHR). PJ was supported by the Canadian Institutes of Health Research Foundation grant (FDN 154277), the University of Toronto, the National Institutes of Health grants (1R01TW007939). The funders had no role in study design, data collection and analysis, decision to publish, or preparation of the manuscript. The analyses, conclusions, opinions and statements expressed herein are those of the author. We declare that this work is unpublished.

#### Availability of data and materials

Under legal agreement with the Registrar General of India, the MDS data cannot be redistributed outside of the Centre for Global Health Research. Please refer to [http://www.censusindia.gov.in/vital\\_statistics/SRS\\_Statistical\\_Report.html](http://www.censusindia.gov.in/vital_statistics/SRS_Statistical_Report.html) for public reports. For MDS data access procedures, please contact by the Office of the Registrar General, RK Puram, New Delhi, India (rgoffice.rgi@nic.in). Sample R codes for statistical analysis can be obtained from the first author.

#### Declarations

##### Ethics approval and consent to participate

Ethics approval for the MDS was obtained from the Post Graduate Institute of Medical Research, St. John's Research Institute and St. Michael's Hospital, Toronto, Ontario, Canada. Consent procedures have been published earlier [18, 41, 42].

##### Informed consent

All necessary patient/participant consent has been obtained and the appropriate institutional forms have been archived.

##### Consent for publication

Not applicable.

##### Competing interests

The authors declare that they have no competing interests either financially or non-financially.

##### Author details

<sup>1</sup>Indian Institute of Technology, Hyderabad, India. <sup>2</sup>Indian Institute of Management, Nagpur, India. <sup>3</sup>Dalla Lana School of Public Health, Centre for Global Health Research, St. Michael's Hospital, University of Toronto, Toronto, ON, Canada. <sup>4</sup>Department of Statistical Sciences, University of Toronto, Toronto, Canada. <sup>5</sup>Dalla Lana School of Public Health, University of Toronto, Toronto, Canada.

Received: 20 September 2021 Accepted: 1 March 2022

Published online: 17 March 2022

#### References

- Gelband H, Bogoch II, Rodriguez PS, Ngai M, Peer N, Watson LK, Jha P. Is malaria an important cause of death among adults? *Am J Trop Med Hyg.* 2020;103:41–7.
- Dhingra N, Jha P, Sharma VP, Cohen AA, Jotkar RM, Rodriguez PS, et al. Adult and child malaria mortality in India: a nationally representative mortality survey. *Lancet.* 2010;376:1768–74.
- Ahmad F, Goparaju L, Qayum A. Studying malaria epidemic for vulnerability zones: multi-criteria approach of geospatial tools. *J Geosci Environ Protect.* 2017;5:30–53.
- Kumar Ra P, Nathawat MS, Onagh M. Application of multiple linear regression model through GIS and remote sensing for malaria mapping in Varanasi District India. *Health Sci J.* 2014;6:731–49.
- Childs DZ, Cattadori IM, Suwonkerd W, Prajakwong S, Boots M. Spatiotemporal patterns of malaria incidence in northern Thailand. *Trans R Soc Trop Med Hyg.* 2006;100:623–31.
- Clements AC, Barnett AG, Cheng ZW, Snow RW, Zhou HN. Space-time variation of malaria incidence in Yunnan province China. *Malar J.* 2009;8:180.
- Mabaso ML, Vounatsou P, Midzi S, Da Silva J, Smith T. Spatio-temporal analysis of the role of climate in inter-annual variation of malaria incidence in Zimbabwe. *Int J Health Geogr.* 2006;5:20.
- Aimone AM, Perumal N, Cole DC. A systematic review of the application and utility of geographical information systems for exploring disease-disease relationships in paediatric global health research: the case of anaemia and malaria. *Int J Health Geogr.* 2013;12:1.
- Nykirforuk CI, Flaman LM. Exploring the utilization of geographic information systems in health promotion and public health. Centre for Health Promotion Studies: School of Public Health, University of Alberta; 2008.
- Samadoulougou S, Maheu-Giroux M, Kirakoya-Samadoulougou F, De Keukeleire M, Castro MC, Robert A. Multilevel and geo-statistical modeling of malaria risk in children of Burkina Faso. *Parasit Vectors.* 2014;7:350.
- Dasgupta P, Cramb SM, Aitken JF, Turrell G, Baade PD. Comparing multilevel and Bayesian spatial random effects survival models to assess geographical inequalities in colorectal cancer survival: a case study. *Int J Health Geogr.* 2014;13:36.
- Srivastava A, Nagpal BN, Joshi PL, Paliwal JC, Dash AP. Identification of malaria hot spots for focused intervention in tribal state of India: a GIS based approach. *Int J Health Geogr.* 2009;8:30.
- Parizo J, Sturrock HJ, Dhiman RC, Greenhouse B. Spatiotemporal analysis of malaria in Urban Ahmedabad (Gujarat), India: identification of hot spots and risk factors for targeted intervention. *Am J Trop Med Hyg.* 2016;95:595–603.
- Pradhan A, Anasuya A, Pradhan MM, Ak K, Kar P, Sahoo KC, et al. Trends in malaria in Odisha, India - an analysis of the 2003–2013 time-series data from the national vector borne disease control program. *PLoS One.* 2016;11:e0149126.
- Dhiman RC, Pillai CR, Subbarao SK. Investigation of malaria outbreak in Bahraich district Uttar Pradesh. *Indian J Med Res.* 2001;113:186–91.
- Santos-Vega M, Bouma MJ, Kohli V, Pascual M. Population density, climate variables and poverty synergistically structure spatial risk in urban malaria in India. *PLoS Neglected Trop Dis.* 2016;10:e0005155.
- Devi NP, Jauhari RK. Meteorological variables and malaria cases based on 12 years data analysis in Dehradun (Uttarakhand) India. *Eur J Exp Biol.* 2013;3:28–37.
- Jha P, Gajalakshmi V, Gupta PC, Kumar R, Mony P, Dhingra N, et al. Prospective study of one million deaths in India: rationale, design, and validation results. *PLoS Med.* 2006;3:e18.
- Jha P, Kumar D, Dikshit R, Budukh A, Begum R, Sati P, Kolpak P, et al. Automated versus physician assignment of cause of death for verbal autopsies: randomized trial of 9374 deaths in 117 villages in India. *BMC Med.* 2019;17:116.
- Office of the Registrar General India, and Centre for Global Health Research, University of Toronto. Report on Causes of Death in India, 2001–2003. New Delhi, India and Toronto, Canada. 2009.
- Gajalakshmi V, Peto R, Kanaka S, Balasubramanian S. Verbal autopsy of 48 000 adult deaths attributable to medical causes in Chennai (formerly Madras) India. *BMC Public Health.* 2002;2:7.
- Gajalakshmi V, Peto R, Kanaka TS, Jha P. Smoking and mortality from tuberculosis and other diseases in India: retrospective study of 43,000 adult male deaths and 35,000 controls. *Lancet.* 2003;362:507–15.
- WHO. The International Statistical Classification of Diseases and Health Related Problems ICD-10: Tenth Revision. Volume 1: Tabular List. Geneva, World Health Organization; 2004.
- Aleksandrowicz L, Malhotra V, Dikshit R, Gupta PC, Kumar R, Sheth J, et al. Performance criteria for verbal autopsy-based systems to estimate national causes of death: development and application to the Indian Million Death Study. *BMC Med.* 2014;12:21.
- Diggle PJ, Tawn JA, Moyeed RA. Model-based geostatistics. *J R Stat Soc.* 1998;47:299–350.
- Brown PE. Model-based geostatistics the easy way. *J Stat Softw.* 2015;63:1–24.
- Rue H, Martino S, Chopin N. Approximate Bayesian inference for latent Gaussian models by using integrated nested Laplace approximations. *J R Stat Soc.* 2009;71:319–92.
- Rue H, Riebler A, Sørbye SH, Illian JB, Simpson DP, Lindgren FK. Bayesian computing with INLA: a review. *Annu Rev Stat Appl.* 2017;4:395–421.
- Wangdi K, Kaewkungwal J, Singhasivanon P, Silawan T, Lawpoolsri S, White NJ. Spatio-temporal patterns of malaria infection in Bhutan: a country embarking on malaria elimination. *Malar J.* 2011;10:89.

30. Dhimal M, O'Hara RB, Karki R, Thakur GD, Kuch U, Ahrens B. Spatio-temporal distribution of malaria and its association with climatic factors and vector-control interventions in two high-risk districts of Nepal. *Malar J*. 2014;13:457.
31. Bouma MJ, Dye C, Van der Kaay HJ. Falciparum malaria and climate change in the northwest frontier province of Pakistan. *Am J Trop Med Hyg*. 1996;55:131–7.
32. Coulibaly D, Rebaudet S, Travassos M, Tolo Y, Laurens M, Kone AK, et al. Spatio-temporal analysis of malaria within a transmission season in Bandiagara Mali. *Malar J*. 2013;12:82.
33. WHO. World malaria report 2015. Geneva, World Health Organization; 2016.
34. Hussain MA, Dandona L, Schellenberg D. Public health system readiness to treat malaria in Odisha State of India. *Malar J*. 2013;12:351.
35. National Institute of Malaria Research and National Vector Borne Disease Control Programme. In-depth review on malaria for National Vector Borne Disease Control Programme. New Delhi: 2007.
36. Mopuri R, Mutheneni SR, Kumaraswamy S, Kadiiri MR, Upadhyayula SM, Naish S. An epidemiological and spatiotemporal analysis to identify high risk areas of malaria in Visakhapatnam district of Andhra Pradesh, India, 1999–2015. *Spatial Inform Res*. 2019;27:659–72.
37. Das NG, Baruah I, Kamal S, Sarkar PK, Das SC, Santhanam K. An epidemiological and entomological investigation on malaria outbreak at Tamulpur PHC Assam. *Indian J Malariol*. 1997;34:164–70.
38. Dutta P, Khan AM, Mahanta J. Problem of malaria in relation to Socio-cultural diversity in some ethnic communities of Assam and Arunachal Pradesh. *J Parasitic Dis*. 1999;23:101–4.
39. Shukla RP, Pandey AC, Mathur A. Investigation of malaria outbreak in Rajasthan. *Indian J Malariol*. 1995;32:119–28.
40. Kumar A, Valecha N, Jain T, Dash AP. Burden of malaria in India: retrospective and prospective view Defining and defeating the intolerable burden of malaria III: Progress and perspectives. *Am J Trop Med Hyg*. 2007;77(Suppl 1):69–78.
41. Gomes M, Begum R, Sati P, Dikshit R, Gupta PC, Kumar R, et al. Nationwide mortality studies to quantify causes of death: relevant lessons from India's Million Death Study. *Health Affairs (Millwood)*. 2017;36:1887–95.
42. Registrar General of India. Report on causes of death in India, 2001–2003: Sample Registration System. New Delhi: Government of India, 2009.

## Publisher's Note

Springer Nature remains neutral with regard to jurisdictional claims in published maps and institutional affiliations.

Ready to submit your research? Choose BMC and benefit from:

- fast, convenient online submission
- thorough peer review by experienced researchers in your field
- rapid publication on acceptance
- support for research data, including large and complex data types
- gold Open Access which fosters wider collaboration and increased citations
- maximum visibility for your research: over 100M website views per year

At BMC, research is always in progress.

Learn more [biomedcentral.com/submissions](https://biomedcentral.com/submissions)

