

RESEARCH

Open Access



Genetic diversity and signatures of selection for heat tolerance and immune response in Iranian native chickens

Hojjat Asadollahpour Nanaei^{*}, Hamed Kharrati-Koopae and Ali Esmailizadeh^{*}

Abstract

Background: Understanding how evolutionary forces relating to climate have shaped the patterns of genetic variation within and between species is a fundamental pursuit in biology. Iranian indigenous chickens have evolved genetic adaptations to their local environmental conditions, such as hot and arid regions. In the present study, we provide a population genome landscape of genetic variations in 72 chickens representing nine Iranian indigenous ecotypes (Creepers, Isfahan, Lari, Marand, Mashhad, Naked neck, Sari, Shiraz and Yazd) and two commercial lines (White Leghorn and Arian). We further performed comparative population genomics to evaluate the genetic basis underlying variation in the adaptation to hot climate and immune response in indigenous chicken ecotypes. To detect genomic signatures of adaptation, we applied nucleotide diversity ($\theta\pi$) and F_{ST} statistical measurements, and further analyzed the results to find genomic regions under selection for hot adaptation and immune response-related traits.

Results: By generating whole-genome data, we assessed the relationship between the genetic diversity of indigenous chicken ecotypes and their genetic distances to two different commercial lines. The results of genetic structure analysis revealed clustering of indigenous chickens in agreement with their geographic origin. Among all studied chicken groups, the highest level of linkage disequilibrium (LD) (~ 0.70) was observed in White Leghorn group at marker pairs distance of 1 Kb. The results from admixture analysis demonstrated evidence of shared ancestry between Arian individuals and indigenous chickens, especially those from the north of the country. Our search for potential genomic regions under selection in indigenous chicken ecotypes revealed several immune response and heat shock protein-related genes, such as *HSP70*, *HSPA9*, *HSPH1*, *HSP90AB1* and *PLCB4* that have been previously unknown to be involved in environmental-adaptive traits. In addition, we found some other candidate loci on different chromosomes probably related with hot adaptation and immune response-related traits.

Conclusions: The work provides crucial insights into the structural variation in the genome of Iranian indigenous chicken ecotypes, which up to now has not been genetically investigated. Several genes were identified as candidates for drought, heat tolerance, immune response and other phenotypic traits. These candidate genes may be helpful targets for understanding of the molecular basis of adaptation to hot environmental climate and as such they should be used in chicken breeding programs to select more efficient breeds for desert climate.

Keywords: Adaptation, Population genomics, Iranian indigenous chickens, Heat shock protein, Whole-genome sequence

Background

Domestic animals are excellent models for genetic studies of phenotypic evolution, due to strong phenotypic selection over many generations [1]. They have genetically

*Correspondence: h.asadollahpour@agr.uk.ac.ir; aliesmaili@uk.ac.ir
Department of Animal Science, Faculty of Agriculture, Shahid Bahonar
University of Kerman, 76169-133 Kerman, PB, Iran



© The Author(s) 2022. **Open Access** This article is licensed under a Creative Commons Attribution 4.0 International License, which permits use, sharing, adaptation, distribution and reproduction in any medium or format, as long as you give appropriate credit to the original author(s) and the source, provide a link to the Creative Commons licence, and indicate if changes were made. The images or other third party material in this article are included in the article's Creative Commons licence, unless indicated otherwise in a credit line to the material. If material is not included in the article's Creative Commons licence and your intended use is not permitted by statutory regulation or exceeds the permitted use, you will need to obtain permission directly from the copyright holder. To view a copy of this licence, visit <http://creativecommons.org/licenses/by/4.0/>. The Creative Commons Public Domain Dedication waiver (<http://creativecommons.org/publicdomain/zero/1.0/>) applies to the data made available in this article, unless otherwise stated in a credit line to the data.

evolved to adapt in diverse environmental conditions. Chickens (*Gallus gallus domesticus*), as the most extensively distributed of the poultries, have long been bred after its initial domestication in Southeast Asia, probably from the red junglefowl (*Gallus gallus*), around 9500 ± 3300 years ago [2]. Today, indigenous chickens are one of the most important sources of high-quality food in the livelihood of rural communities that well adapted to survive in their local conditions [3, 4]. Similarly, the native chicken populations of Iran are socially significant. They have been less artificially selected than commercial lines, which may harbour unique gene pools as a result of long-term adaptation to conditions prevailing in their ecosystem.

During recent decades, observed global climate data clearly display a warming trend in most part of the globe, resulting in a wide range of climatic impacts [5, 6]. Iran is located on Afro-Asian belt of deserts with 90% drylands extent, which climatically considered as a hot-arid region in the world [7, 8]. Indigenous chicken ecotypes of Iran are consequently raised from different parts of this land, which are well known for their tolerance to drought climate, low input regimes and also endemic diseases [9]. For example, the Creeper chicken is a native Iranian ecotype with small body mass (around 1 kg) that originated from Sistan and Baluchestan province, located in southeast of the country. The living environment of this ecotype belongs to the temperate desert climate zone with high solar radiation, high daytime temperatures, low rainfall (113 mm/year), frequent floating dust weather and high evaporation [10]. Since chickens with smaller body mass have a higher surface area to body weight ratio, the smaller body mass of Creeper chickens would help them to survive in hot and arid conditions. The Naked neck chicken is one another Iranian chicken ecotype that inhabit in northern parts of Iran. Previous studies have shown that the Naked neck chicken breeds have better growth performance in higher temperature than the normal breeds. Additionally, it has been suggested that the introduction of naked neck gene to reduce feather cover in the neck area of chickens that live in hot climates may be useful in breeding programs to improve the detrimental effects of heat tolerance [11].

In the last decade, some genomic studies in Iranian indigenous chickens based on limited microsatellite loci reported genetic variability between different ecotypes [12–14]. Only a few studies have been done to understand the genetic variation of different native ecotypes at the whole genome sequence level [15, 16]. Despite the fact that the Iranian indigenous chicken ecotypes, compared to commercial lines, may genetically have high thermo-tolerance capacity to survive in arid and semi-arid regions, there are lack of genomic studies related to

heat tolerant traits in these birds [17]. Long-term natural selection in indigenous chickens leads to change in the allele frequency and thus favour adaptation as a product of evolution, however, commercial chickens have been bred through a series of massive artificial selection processes for meat production (broilers) or egg production (layers). The identification of loci under natural selection is of great interest in different research areas, which could increase understanding of the genetic mechanisms underpinning natural selection and adaptation to different local conditions [18].

In this study, for the first time, whole genome sequencing (WGS) data from most Iranian indigenous ecotypes (nine different populations) and two commercial lines (Arian and White Leghorn chickens, which are commonly used for meat and egg production, respectively) were used to characterize the genetic diversity, population structure and signatures of selection analysis. Results from comparative genomic analysis uncovered novel candidate genomic regions related to hot climate adaptation and immune response traits that could be under natural selection in indigenous chicken population. Our findings further provide new insights to better understanding the genetic relationship between indigenous chicken populations and commercial lines and will be helpful in the selection of superior native chickens.

Methods

Sampling and genomic DNA extraction

In this study, we sampled a total of 51 indigenous chickens from nine different ecotypes, including Creeper ($n=7$), Isfahan ($n=5$), Lari ($n=6$), Marand ($n=4$), Mashhad ($n=7$), Naked neck ($n=5$), Sari ($n=5$), Shiraz ($n=7$) and Yazd ($n=5$). The samples were collected from different provinces as indicated in Fig. 1A (Additional file 1: Table S1). In general, the most dominant climate in Iran is arid which is characterized by long, dry and hot summer. For examples Yazd chicken ecotype lives in Yazd province, which has a hot desert climate region with a yearly precipitation of less than 65 mm [19]. Both Lari and Creeper ecotypes, that belong to the southern parts of Iran, are well adapted to the hot and dry climate conditions [20]. In addition, Naked neck chickens were collected from the north of Iran that genetically are more resistant to high temperatures [11]. Furthermore, 21 commercial chickens from two lines, White Leghorn ($n=11$) and Arian ($n=10$), were used in order to perform a comparison between different groups. For all studied individuals, venous blood samples (2 mL) were collected under the wing of the chickens for genomic DNA extraction method. No bird individuals died in this study, and all chickens stayed healthy after collecting blood samples. Total genomic DNA was isolated from whole blood

samples using salting out protocol. The quality and quantity of the extracted DNA were tested by agarose gel (1%) electrophoresis and NanoDrop spectrophotometer analysis, and high-quality DNA samples were utilized for the subsequent whole genome resequencing.

Re-sequencing of selected samples, quality checking and SNP calling

The individual genomes from nine indigenous chicken ecotypes ($n=51$) and two commercial lines ($n=21$) were sequenced on an Illumina HiSeq 2000 platform with a read length of 125 bp and $\sim 10.2 \times$ coverage (Additional file 1: Table S1). Read quality was evaluated using FastQC software (Version 0.4.2) (<http://www.bioinformatics.babraham.ac.uk/projects/fastqc>), and adapters and poor quality base pairs were removed by Trimmomatic software (version 0.36) [21]. Retained high-quality reads were then aligned to the reference chicken genome (GRCg6a: https://www.ncbi.nlm.nih.gov/assembly/GCF_000002315.5/) using Burrows Wheeler Aligner (BWA mem Version 0.7.10) [22]. The SAMtools software was used for converting SAM (.sam) and BAM (.bam) files, and for read sorting and indexing [23]. In order to reduce the risk of false positive variant calling, potential PCR duplicates were removed by Picard toolkit (<http://broadinstitute.github.io/picard>). To improve the alignment accuracy, base quality score recalibration (BQSR) and local realignment around indels were performed using Genome Analysis Toolkit (GATK) tools [24]. Final variants (single nucleotide polymorphism, SNPs) were called and filtered according to the GATK best practices recommendations. We further using Chicken dbSNP (Illumina chicken BeadChip and Affymetrix Axiom HD chicken genotyping array) preformed variant quality score recalibration (VQSR) by GATK package. By doing this step, we generated a recalibrated VCF file that includes the variation records with higher specificity. The haplotype phasing was performed using BEAGLE v.4.1 software [25]. All detected variants (~ 18.6 million SNPs) were then filtered to be supported by a minimum genotype quality of 40 and minimum mapping quality of 25. In order to avoid potential sequencing errors, all identified loci with more than two alleles and within clusters (>3 SNP in a 10-bp window) were removed for the subsequent analyses [26]. After filtering out low-quality reads, around 14.56 million variants were retained for all individuals (Additional file 1: Table S2). A majority up to 11.45 million SNPs were observed in native group followed by 8.48 million in Arian group and 7.12 million in White Leghorn chickens. We observed 7.98 million SNPs shared between native and Arian group, which exceeded that shared between the native and White Leghorn group (5.9 million) (Additional file 2: Fig. S1).

Population structure and admixture analyses

The maximum-likelihood (ML) method was applied to reconstruct phylogenetic tree. We first converted filtered VCF file into consensus FASTA files using vcf2fq in vcfutils.pl from Samtools [23], and then used FastTree 2 software [27] to generate tree. The online tool iTOL (<https://itol.embl.de/>) was used to visualize the topological structure.

Since linkage disequilibrium (LD) could modify the genetic structure analysis [28], the SNP dataset was first pruned for LD in PLINK (using PLINK option `-indep-pairwise 50 10 0.1`) [29]. The principal component analysis (PCA) and ADMIXTURE were carried out based on 6,562,417 SNPs after pruning for LD. We used genome-wide complex trait analysis (GCTA) based on SNP genotypes to assess genetic differences between all chicken groups [30]. To consider the possible genetic admixture between populations, we used the admixture model implemented in ADMIXTURE software, with an ancestor population (K) size ranging from 2 to 6 and 10,000 iterations for each run [31]. Additionally, haplotype sharing patterns were explored using the algorithm implemented in CHROMOPAINTER and fineSTRUCTURE softwares [32]. The decay of LD was calculated by Poplddecay software for different genetic distances (1, 3, 5, 15, 60 and 100 Kb) SNP pairs [33]. Runs of homozygosity (ROHs) were detected across all individual genomes via the “Runs of Homozygosity program” implemented in PLINK software with adjusted parameter (`-homozyg-kb`) [29]. For each chicken population, we identified all ROHs of length longer than 100 and 400 kb distances. We also calculated different genomic diversity parameters including observed heterozygosity (H_o), expected heterozygosity (H_e) and proportion of polymorphic SNPs (P_n) using PLINK with the default settings. Additionally, we used the ‘-het’ flag in PLINK to estimate the inbreeding coefficient (F) for each individual and each chicken group [29].

Statistics to explore selective sweep regions

For the selective sweep analysis, two different methods were used to detect regions under selection. We calculated the genome-wide weighted F_{ST} [34], as it is a more precise measure of average genetic distance between groups with unequal samples [35]. The threshold of F_{ST} values were set to 0.210 and 0.195 (top 5% of empirical distribution for F_{ST} value), to determine outliers between indigenous chicken ecotypes and two commercial lines, White Leghorn and Arian groups, respectively. We then estimated nucleotide diversity $\theta\pi$ by using VCFtools (`-window-pi 50,000 --window-pi-step 25,000`) [36]. For the entire genome, sliding window analyses were performed with a window size of 50 kb and a step size of 25 kb. The

average F_{ST} and $\log_2(\theta\pi_{\text{native}}/\theta\pi_{\text{commercial}})$ values of SNPs in each window were calculated.

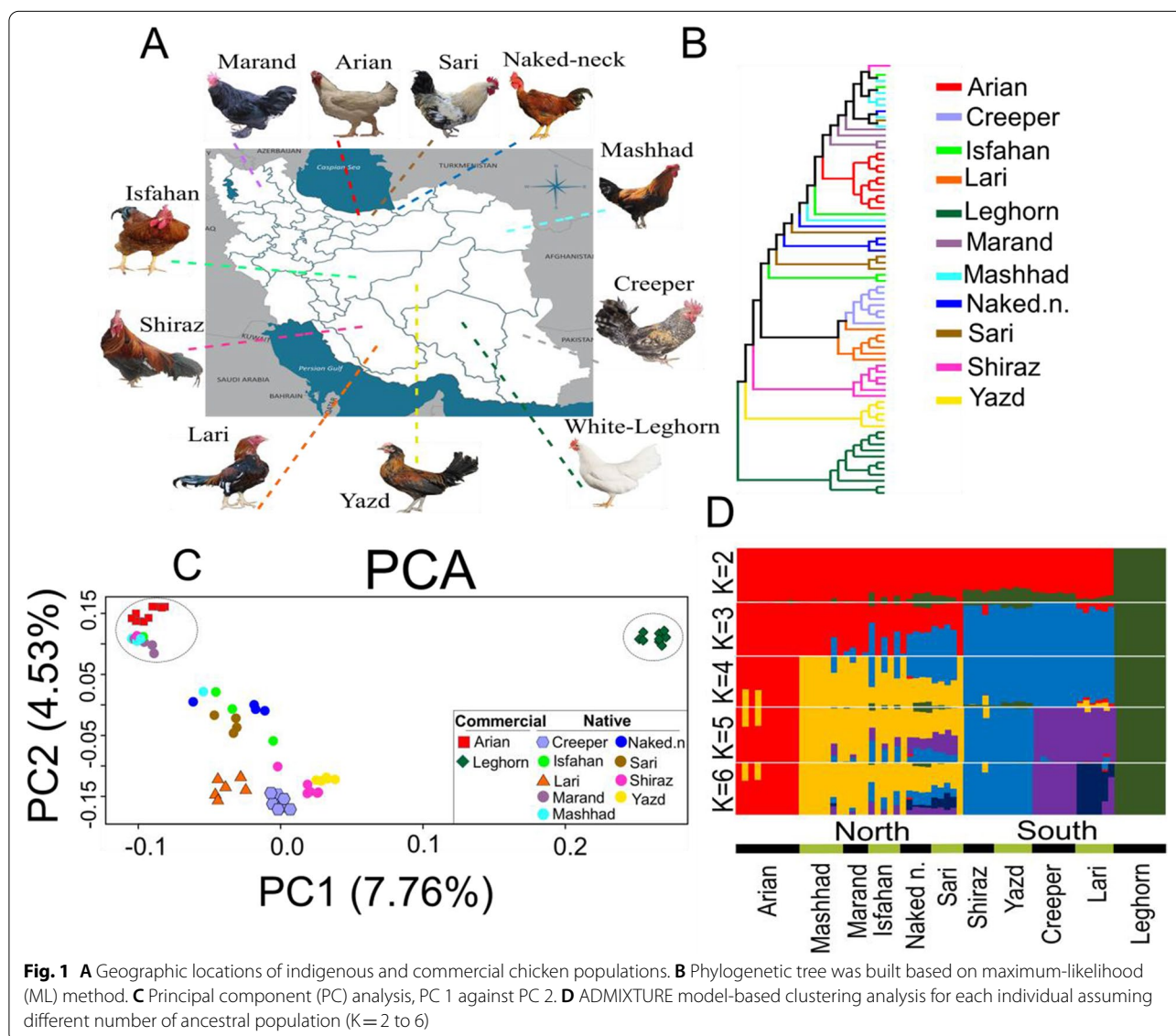
Gene set enrichment and pathway analysis

To explore the possible pathways related to identified regions by the above-mentioned methods (F_{ST} and $\log_2 \theta\pi$ ratio), all candidate regions were annotated using the Variant Effect Predictor (VEP) available at (<http://asia.ensembl.org/info/docs/tools/vep/index.html>). Functional enrichment analysis, based on biological process Kyoto Encyclopedia of Genes and Genomes (KEGG) and Gene Ontology (GO) pathways, was then performed by using the ‘g:Profiler’ (<https://biit.cs.ut.ee/gprofiler/>) enrichment analysis tool, to uncover their biological functions. Finally, the P -value ($P < 0.01$) of the gene enrichment was corrected by Benjamini–Hochberg False Discovery Rate (FDR-BH).

Results

Population structure, runs of homozygosity and linkage disequilibrium decay

We conducted a series of classical analyses including phylogenetic assessments to identify population structure and the genetic relationship of different chicken groups. A phylogenetic tree for all individuals was constructed using ML method. Based on this tree (Fig. 1B), indigenous chicken individuals were separated far from White Leghorn samples but close to the Arian population. The PCA and ADMIXTURE results were also agreed with the phylogenetic tree (Figs. 1C and 1D). The early split between White Leghorn individuals and other chicken groups was indicated in the first component (PC1) that is consistent with phylogeny tree (Fig. 1C). The PC1 and PC2 accounted for 7.76% and 4.53% of the total genotypic variance, respectively. The Arian samples presented

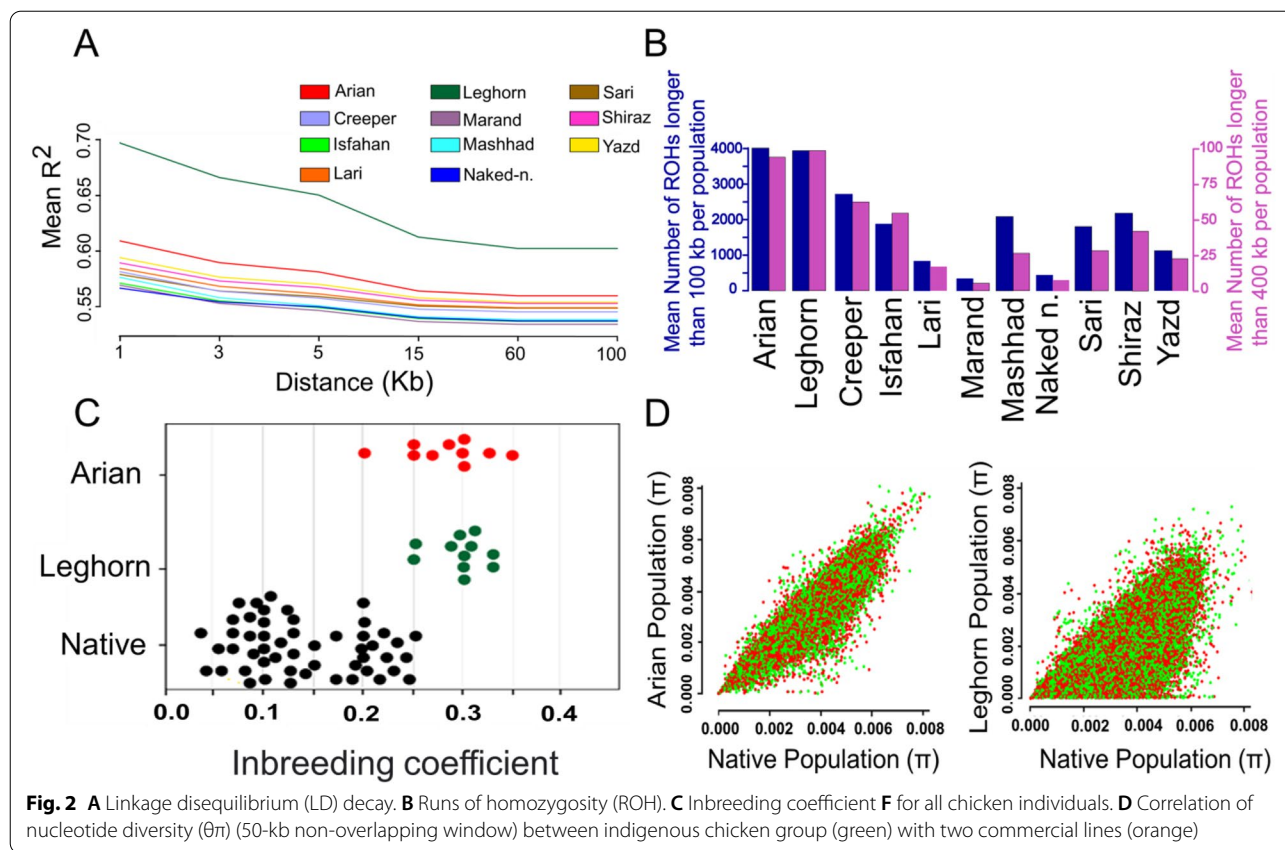


closer genetic distance to the indigenous individuals, thus nearly all samples from Mashhad and Marand ecotypes very tightly clustered close to this group, rather than other indigenous populations. Iranian chicken ecotypes could further be grouped into two groups, southern (Creepers, Yazd, Shiraz and Lari) and northern (Mashhad, Marand, Isfahan, Naked neck and Sari) populations. In order to better characterise the genetic relationship of indigenous chickens with other two commercial lines, the haplotype sharing patterns among individuals were estimated by ChromoPainter and fineSTRUCTURE software. FineSTRUCTURE is a model-based statistical algorithm that uses the coancestry matrix obtained from ChromoPainter to classify samples based on haplotype frequencies. The results are summarized into a “coancestry matrix”. Each row and each column indicates the result of expected coancestry between each chicken individual and other birds in the whole genome dataset. Dark colouring (blue) represents a high chunk count while the light colour (yellow) indicates a low chunk count. The colour bar on the right indicates the number of chunks (Additional file 2: Fig. S2). The results of painting algorithm provided substantial evidence of lower genetic similarity between indigenous chicken ecotypes and White Leghorn samples, rather than Arian group.

The clustering in ADMIXTURE (from K2 to K6) inferred the ancestry-component for all samples studied (Fig. 1D). The K=2 splits the White Leghorn individuals from Arian and other Iranian chicken ecotypes. The K=3 further distinguishes samples from north and south of the country, where the dominant component in the Arian population was detected in all ecotypes belonging to the north of Iran. When K=4, with the lowest CV error (Additional file 2: Fig. S3), we found a separation between Arian population and chicken samples from the north of Iran (Fig. 1D). At K=5, Lari and Creeper chickens divided from the remaining indigenous ecotypes in south of the country. In addition, plots with K=5 and K=6 clusters (Fig. 1D) suggest that some chicken ecotypes from north of Iran (mainly Sari and Naked neck) derive from genetic admixture between at least three populations. Ancestral proportions at K=6 indicated that Yazd and Shiraz chickens were mainly assigned to the same cluster, while Lari and Creeper were separated from each other. Consequently, the results of admixture analysis demonstrated that Iranian ecotypes could be traced back to more than one single genetic source, suggesting multiple origins or origin events for native chickens. We then calculated the nucleotide diversity ($\theta\pi$) within each chicken group and found that both two commercial groups have lower diversity than other indigenous ecotypes (Additional file 2: Fig. S4). The LD (R to the power of 2) decay rates between adjacent SNPs

across the complete genome were determined to infer recent and historical effective population size (N_e). The results of LD decay analysis up to 100 kb are shown in Fig. 2A.

Our results showed a markedly higher level of LD across all genomic distances in both two commercial lines compare to all other indigenous ecotypes (Fig. 2A). As expected, the r^2 values were the highest for all studied groups at marker pairs distance of 1 Kb (ranged from ~0.57 to 0.70, for Naked neck and White Leghorn, respectively) with a gradual decline with increasing physical distance between SNPs (up to 60 Kb) and then stable trend (>60 Kb). The highest and lowest r^2 values were observed in White Leghorn (0.61) and Marand (0.52) ecotypes at marker pairs distance of 100 Kb, respectively. We further found that from marker pairs distance of 1 Kb to ≤ 60 Kb, the decay of LD was more rapid in White Leghorn group than other birds, reaching an average r^2 values from 0.70 to 0.61 (Fig. 2A). Focusing on the native ecotypes, higher r^2 values across all genomic distances were found for Yazd ecotype that is genetically less mixed with other chicken groups (Fig. 1D), and dwelled in southern parts of the country. While the lower r^2 values were found in Marand ecotype, that seems genetically admixed with at least one native chicken group (creepers ecotype) (Fig. 1D). We then calculated ROH at different cut-off lengths among studied groups. The majority of the detected ROHs were identified <0.4 Mb for all chickens (Additional file 1: Table S3). Compared to the native ecotypes, commercial chickens showed a higher number of short to medium sized ROHs (0.1 to 0.4 Mb), with the highest number found in the White Leghorn ($n=5035$) followed by Arian chickens ($n=4974$) (Fig. 2B). The ROH segments varied in total numbers among native ecotypes, ranging from 425 to 3111 for Marand and Creeper, respectively. The mean number of detected ROHs longer than 100 Kb for all studied groups ranged from 362 to 4012 for Marand and White Leghorn, respectively. We also checked the distribution of long ROH (ROH size >1 Mb) among groups and birds. As the results showed, except for three native ecotypes (Creeper, Naked neck and Yazd), no other chicken groups had ROH longer than 1 Mb in length (Additional file 1: Table S3). Long ROHs are likely to be due to recent inbreeding, because they have not yet been broken up by recombination, while short and medium sized ROHs are more likely the results of selection for a long period of time and more ancient inbreeding. We further estimated inbreeding coefficients (F) per each individual (ranged from ~0.04 to 0.37 for Naked neck and Arian, respectively) and chicken group (ranged from 0.07 to 0.36 for Naked neck and White Leghorn, respectively)



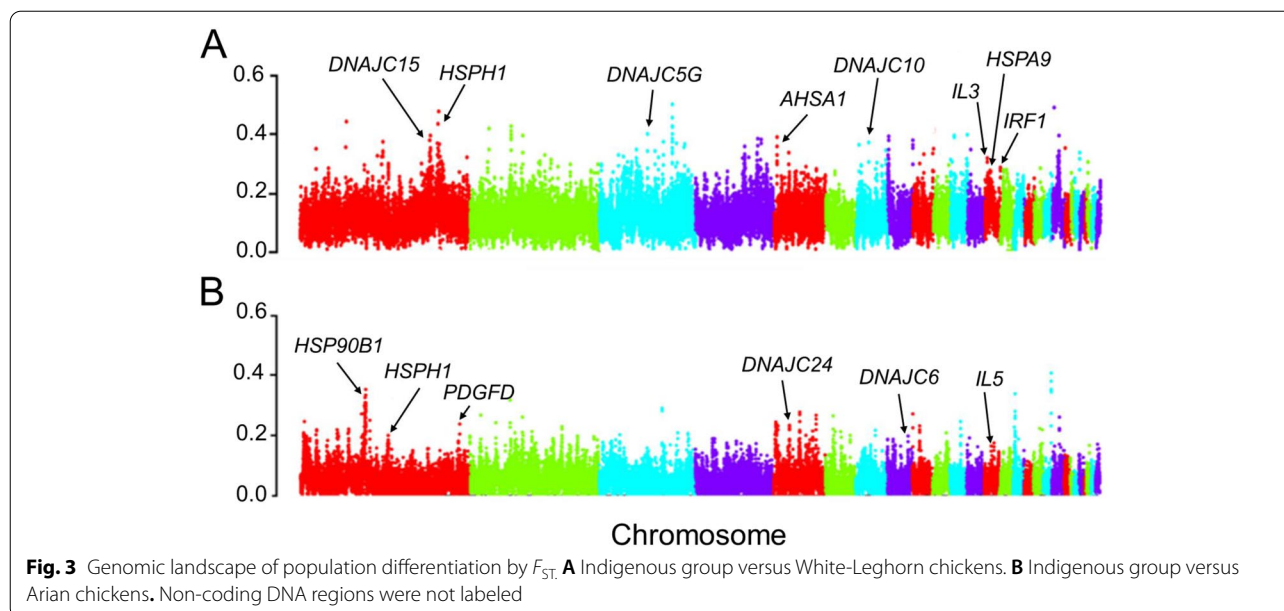
(Fig. 2C and Additional file 1: Table S4). The maximum and minimum levels of average inbreeding coefficient for native ecotypes were 0.21 and 0.07, for Shiraz and Naked neck ecotypes, respectively. The results showed that all native ecotypes had lower inbreeding coefficient than commercial chicken populations. We then calculated the genetic diversity parameters in all chicken populations using whole-genome SNP data.

Our findings showed that indigenous chicken ecotypes have higher H_o values (average ~ 0.194) than both commercial groups (0.124 and 0.145, for White Leghorn and Arian, respectively). In all studied chicken groups, P_n ranged from 0.634 (White Leghorn) to 0.912 (Marand), with a mean of 0.768 (Additional file 1: Table S4). Our finding from estimating the patterns of genetic divergence, as a function of $\theta\pi$, between indigenous chickens and other two commercial populations revealed a strong genetic correlation between Iranian indigenous chicken group and Arian samples, which also could be due to their shared ancestry (Fig. 2D).

Scanning of highly differentiated genomic regions

Our results revealed high levels (mean weighted $F_{ST} > 0.6$) of genetic differentiation between both commercial lines and indigenous chickens (Fig. 3).

The comparative genomics results between indigenous chicken ecotypes and White Leghorn group revealed a total of 853 and 309 protein-coding genes in windows with high F_{ST} (5% cutoff) and $\log_2 \theta\pi$ ratio values (1% cutoff), respectively (Additional file 1: Table S5 and Table S6). In addition, our results from selection signature statistics between indigenous chicken group and Arian samples revealed a total of 763 and 205 candidate genes in the top windows for F_{ST} (5% cutoff) and \log_2 ratio of $\theta\pi$ tests (1% cutoff), respectively (Additional file 1: Table S7 and Table S8; Additional file 2: Fig. S5). For further functional analysis, those genomic regions identified above were annotated to the corresponding genes and biological pathways to investigate the potential genetic mechanisms associated with different traits in chicken (Additional file 1: Tables S9-S12). The results showed several candidate genes that have previously been reported to associate with heat tolerance and immune-related traits (such as; *HSPA9*, *HSPH1*, *HSP70*, *HSP90AB1*, *NBEA*, *IL5*, *IL3* and *IRF1*) between native ecotypes and White Leghorn genomes (Table 1). KEGG mapping and gene set enrichment analysis (GSEA) identified some significantly enriched categories related with heat tolerant and immune response traits such as “abnormality of the immune



system” (HP:0,002,715), “activation of MAPKK activity” (GO:0,000,186) and “phosphatidylinositol phosphate binding” (GO:1,901,981) (Additional file 1: Table S9 and Table S10). Moreover, comparative genomic results between native ecotypes and Arian genomes, showed some enriched categories, “MAPK signaling pathway” (KEGG:04,010) and “Deficiency of N-acetylglucosamine-1-phosphotransferase” (HP:0,003,264) (Additional file 1: Table S11 and Table S12), and genes (such as *HSP90B1*, *HSPH1*, *PLCB4* and *IL5*) that are involved in heat shock tolerance and/or immune activity related traits (Table 1).

Discussion

Genetic diversity and population structure

Information about population structure and genetic diversity among native chicken ecotypes is of fundamental importance for genetic improvement, understanding of environmental adaptation as well as for conservation and sustainable management programs [56]. Our study set out to analyze patterns of Iranian indigenous chicken genetic variation by sequencing 51 complete genomes from nine indigenous populations and comparing them to the genomes of two different ($n=21$) commercial lines.

Iranian indigenous chickens are typically kept by small-holder farmers under extensive management systems and without controlled breeding programs [9]. In line with most previous studies, we found that the indigenous chicken ecotypes harbor higher levels of genetic diversity, as compared with the commercial lines, which could be due to inherent traditional breeding practices

of natural and random mating of indigenous chickens [57, 58]. The estimated H_o values (ranged from 0.181 to 0.211) for native chicken ecotypes in the present study were relatively similar to those reported in native chicken ecotypes in Thailand and Jordan [59–61], but lower than Indian and African native ecotypes [62–64]. We observed no significant differences between H_o and H_e values in all chicken ecotypes. However, we found lower H_o (ranged from 0.124 to 0.145) than H_e values (ranged from 0.168 to 0.192) in both two commercial lines, showing a departure from Hardy–Weinberg equilibrium and therefore possibility of selection, non-random mating and/or inbreeding pressure within populations [65]. We further observed that among two commercial groups, White Leghorn chickens had the lowest genetic diversity ($H_o=0.124$), which is in agreement with previous studies [66] and could be attributed to the intense artificial selection over a short period of time and breed-formation practices [67].

Knowledge about the patterns of LD decay can provide important insights into population history, demographic processes and breeding systems [68, 69]. The LD estimates decreased with increasing genomic distance of SNP pairs, which was consistent with previous studies in chicken and livestock animals [70, 71]. We found that all of the studied indigenous ecotypes followed the same pattern of decrease in LD as the genomic distance increased, however more rapid decrease in LD over increasing genomic distance was observed in White leg-horn chickens (Fig. 2A).

The r^2 values obtained in this study for native ecotypes were in the ranges of 0.52 to 0.57 at marker pairs distance

Table 1 Candidate genes putatively selected by two statistical methods (F_{ST} and $\log_2 \theta\pi$ ratio and) affecting heat stress and immune responses traits in indigenous chicken ecotypes

Selected comparative model	Statistical-Method	Gene	Chr.*	Summary of gene function
Native ecotypes – White-Leghorn line	F_{ST} (top 5%)	<i>HSPA9</i>	13	Heat stress [37]
		<i>AHSA1</i>	5	Heat stress [38]
		<i>HSPH1</i>	1	Heat stress [39, 40]
		<i>DNAJC10</i>	7	Heat stress [41]
		<i>DNAJC6</i>	8	Heat stress [42]
		<i>DNAJC15</i>	1	Heat stress [41]
		<i>DNAJC5G</i>	3	Heat stress [41]
		<i>DNAJA4</i>	10	Heat stress [41]
		<i>IL3</i>	13	Immune response [43, 44]
		<i>IL13</i>	13	Immune response [43, 44]
	$\log_2(\theta\pi\text{-Native}/\theta\pi\text{-Commercial})$ (top 1%)	<i>IRF1</i>	13	Immune response [45]
		<i>HSP70</i>	5	Heat stress [43, 46–48]
		<i>HSPD1</i>	7	Heat stress [37, 49]
		<i>HSPH1</i>	1	Heat stress [39, 40]
		<i>NBEA</i>	1	Heat stress [50]
		<i>HSP90B1</i>	1	Heat stress [37, 51]
		<i>HSP90AB1</i>	3	Heat stress [52]
		<i>HSPA5</i>	17	Heat stress [53]
		<i>HSPB1</i>	19	Heat stress [53]
		<i>HSPA8</i>	24	Heat stress [53]
Native ecotypes- Arian line	F_{ST} (top 5%)	<i>IRF1</i>	13	Immune response [45]
		<i>IL5</i>	13	Immune response [43, 44]
		<i>IL3</i>	13	Immune response [43, 44]
		<i>DNAJC15</i>	1	Heat stress [41]
		<i>HSP90B1</i>	1	Heat stress [37, 51]
	$\log_2(\theta\pi\text{-Native}/\theta\pi\text{-Commercial})$ (top 1%)	<i>HSPH1</i>	1	Heat stress [39, 40]
		<i>DNAJC24</i>	5	Heat stress [41]
		<i>DNAJC6</i>	8	Heat stress [42]
		<i>IL5</i>	13	Immune response [43, 44]
		<i>HSPH1</i>	1	Heat stress traits [39, 40]
	$\log_2(\theta\pi\text{-Native}/\theta\pi\text{-Commercial})$ (top 1%)	<i>PLCB4</i>	3	Immune response and heat stress [49, 54, 55]
		<i>IRF1</i>	13	Immune response [45]

* Chromosome

of 100 Kb, which agreed with those reported for Chinese and Canadian native chicken populations [70, 72]. We further found a markedly higher level of LD across all genomic distances in White Leghorn chickens followed by Arian group (Fig. 2A). The high level of LD in commercial chicken lines could be a consequence of higher level of inbreeding and extensive artificial selection for desired traits in the breeding programs [73]. In addition, quantifying the ROH per each studied group revealed the lower level of ROH in all indigenous populations compared with both two commercial chicken lines (Fig. 2B), that is in line with previous reports using microarray [74] and whole genome sequencing data [75]. Our results revealed that

both length and number of ROHs varied among chicken ecotypes (Fig. 2B, Additional file 1: Table S3). The results from population genetic analyses, including phylogeny based on haplotype patterns, admixture ($K=2$ and $K=3$), and PCA, have collectively demonstrated the possibility of shared genetic ancestry between Arian line and native ecotypes, especially those chicken ecotypes from the north of country (Figs. 1B, 1D and 2D). It seems likely that the local chicken breeders, especially in the north of the country, have been focused on growth rate and meat production traits through cross-breeding of native ecotypes with Arian broiler lines to improve the genetic pool of local stock birds. To support this hypothesis, our results

from population clustering programs such as PCA and Admixture, as well as estimating the patterns of genetic divergence show those native chicken ecotypes belong to the north of the country, where the companies related to exotic commercial strains such as viz (a pure Arian broiler line, which has a 78% share of the day-old chick market) established in the early 1980s [76], display low genetic distances with Arian group.

The adaptation of indigenous chickens to environmental stresses

The native ecotypes are more likely to be a good model for exploring the genetic mechanisms underlying adaptation to local cultural conditions and disease. To investigate this, all indigenous chickens were combined and compared to two different commercial lines to uncover loci subjected to natural selection over a long number of generations. Previous reports showed that the heat tolerance negatively influences the health and production of livestock species, and today the genetic selection for heat-tolerant is a challenge in poultry industry [77–79]. Majority of studies have shown that there is genetic variation in performance of chicken populations under heat tolerance conditions [80, 81]. Therefore, identification and selection genes for heat tolerance is likely to offer a promising and long-term solution to address issues relating to this problem. Results from the detection of selection signatures between White Leghorn and indigenous chicken group, using two different statistical methods, revealed several putative candidate genes in the high-confidence selection regions (highest 5% F_{ST} and 1% $\log_2 \theta\pi$ ratio values) that may be involved in heat tolerance and immune response traits (Table 1). In our broad spectrum analysis, we found different heat shock protein (HSP) genes such as; *HSP70*, *HSPH1*, *HSPD1*, *HSP90A1*, *HSPB1* and *HSPA8* to be probably associated with heat tolerance related traits in Iranian native chicken (Table 1 and Fig. 3A). HSPs are a large family of highly homologous chaperone proteins that are induced when cells are exposed to temperatures above their optimum for growth [82–85]. These proteins protect essential cell components from various types of harmful damages and also facilitate cellular recovery. *HSP70*, as one of the most important members of the HSP family, is located on chicken chromosome (GGA) 5 (53.058–53.060 MB). The expression/activity of this gene in response to different thermal challenges has been extensively investigated in chicken and mammals [46, 86, 87]. Previous studies have found associations of the *HSP70* variants with the survival ability of cells affected by heat tolerance. It was reported a silent mutation in coding region of *HSP70* could possibly be used as a heat tolerance marker in indigenous and commercial

chickens [47]. The gene expression analysis showed that the expression level of chicken *HSP70* mRNA in the heart and liver of young White Leghorn was positively correlated with body temperature [88]. Most recently, the substitution of T with C in exon 1 (52.784621–52.784671 Mb) of this gene was also suggested as a candidate marker for heat stress tolerance in breeding program of Dandarawi line chickens [89].

We further found some candidate genes on different chromosomes to be potentially involved in chicken immune system. For example, we identified a group of interleukin (*IL3*, *IL13*, *IL5*) and interferon (*IRF1*) genes that are responsible in immune response. Interleukins are a group of cytokines that expressed by leukocytes [90]. Several investigations attempt to explain the role of interleukins in immune system of chickens [91–93]. This finding is in agreement with previous studies that claimed genomic regions under selection in native chickens display significant enrichment for immune function genes [94, 95].

We then analyzed signatures of selection between Arian group and indigenous chicken ecotypes. Within the regions with higher values of F_{ST} (top 0.05) and reduced nucleotide diversity (top 0.01 of $\log_2 \theta\pi$ ratio values), we found some candidate genes associated with heat tolerance (such as; *HSPH1*, *HSP90B1*) and oxidative stress response (eg *PLCB4*) (Table 1 and Fig. 3B). *HSPH1* (also called *Hsp105* or *Hsp110*) is a high molecular weight protein belonging to the HSP family that functions in cellular stress response and apoptosis pathways [96]. This protein has previously been shown to cooperate with *HSP70* and *HSP40* to prevent aggregation of misfolded proteins [97]. High level expression of *HSPH1* gene was also observed in chicken macrophage-like cell line under acute heat tolerance [39]. Previous global gene expression study has also showed that the *HSPH1* gene is differentially expressed in liver, brain and leg muscle of broiler chickens that exposed to heat tolerance [40]. Furthermore, the haplotype network of the *HSPH1* selected region (Chr1: 176.34–176.36 Mb) showed that the indigenous Iranian chicken haplotypes are mostly identical at all of the SNPs across this gene (Additional file 2: Fig. S6). *PLCB4* is another protein coding gene that has important roles in regulating immune defense, energy metabolism and oxidative stress response in different animal species [54, 55]. Heat tolerance causes excessive oxygen consumption in organisms, which lead to optimized oxygen delivery by increasing blood flow in circulation [48]. Most recently, the potential roles of this gene in the MAPK signaling pathway, which is an upstream regulator of melanogenesis and melanoma angiogenesis, was described in detail in one experimental study on local chickens that live in tropical climates [98].

Conclusions

This study represents the first attempt to investigate the genetic diversity and population structure of most Iranian indigenous chicken ecotypes by using whole-genome sequencing data. We estimated and compared several genetic diversity parameters such as LD, ROH, fixation index (*FST*) and gene diversity (*He*, *Ho* and *Pn*) between nine Iranian indigenous chicken ecotypes and two commercial lines. Multiple lines of evidence suggest that there is a high level of genetic distance between native chicken ecotypes and White Leghorn group. However, we observed a relatively low genetic variability between Arian group and native chicken ecotypes, especially those from northern parts of the country. We further found relatively high levels of LD decay and ROH in both two commercial lines, which could be a consequence of artificial selection for desired traits such as egg or meat production performances. In addition, we detected several candidate genes associated with adaptation to arid environment, immune response activation and parasite resistance in Iranian indigenous chicken ecotypes. Our finding will help improve our understanding of the mechanisms and identify the targets of selection in indigenous chickens that live in desert regions and also facilitate future genome wide association studies and investigations into genomic targets of selection [99].

Abbreviations

BAM: Binary Alignment MAP; BWA: Burrows-Wheeler Aligner; F_{ST} : Fixation index; LD: Linkage disequilibrium; GATK: Genome Analysis Toolkit; GO: Gene ontology; Θ_{π} : Nucleotide diversity; PCA: Principle component analysis; ROH: Runs of homozygosity; SNP: Single-nucleotide polymorphism; GCTA: Genome-wide complex trait analysis.

Supplementary Information

The online version contains supplementary material available at <https://doi.org/10.1186/s12864-022-08434-7>.

Additional file 1: Table S1: Sample information for each chicken (72 individuals) used in this study. **Table S2:** Chromosome-length and number of detected variants before and after filtering. **Table S3:** Mean number of ROHs longer than different classes (Kb). **Table S4:** Summary diversity results. Proportion of polymorphic SNPs (P_N), Observed heterozygosity (H_o), Expected heterozygosity (H_e), and average inbreeding coefficient (F) for each studied group. **Table S5:** Positively selected genes (top 5%) identified between indigenous group and White-Leghorn identified by FST method. **Table S6:** Positively selected genes identified by top 1% highest $\log_2(\Theta_{\pi}$ -Native-ecotypes/ Θ_{π} -White-Leghorn). **Table S7:** Positively selected genes (top 5%) identified by *FST* method between indigenous group and Arian. **Table S8:** Positively selected genes identified by top 1% highest $\log_2(\Theta_{\pi}$ -Native-ecotypes/ Θ_{π} -Arian). **Table S9:** Overrepresented GO categories among genes showing high *Fst* values between indigenous group and White-Leghorn. **Table S10:** Overrepresented GO categories among genes showing high $\log_2(\Theta_{\pi}$ -Native-ecotypes/ Θ_{π} -White-Leghorn). **Table S11:** Overrepresented GO categories among genes showing high *Fst* values (indigenous group versus Arian). **Table S12:** Overrepresented GO categories among genes showing high $\log_2(\Theta_{\pi}$ -Native-ecotypes/ Θ_{π} -Arian).

Additional file 2: Figure S1. Venndiagrams summarize unique and common variants among groups. **Fig. S2.** The heat map of ChromoPainter's coancestry matrix. Each row corresponds to the recipient genomes and columns represent the donor individuals. **Fig. S3.** Cross validation error (CV) plot from ADMIXTURE. **Fig. S4.** Box plots of nucleotide diversity, calculated in 50kb sliding window with 20 kb increments across the genome. **Fig. S5.** Genomic regions with selection signals in native chickens by π method. (A) Indigenous group versus Arian chickens. (B) Indigenous group versus White Leghorn chickens. **Fig. S6.** Haplotype network based on pairwise differences within the selective sweep region (Chr1: 176.34-176.36) in *HSPH1*.

Acknowledgements

H.A.N was supported by the National Natural Science Foundation of China (32050410304). A.E. was supported by Chinese Academy of Sciences President's International Fellowship Initiative (No. 2016VBA050). H.K.K. was supported by Iran National Science Foundation (INSF; Grant number: 99013627) and Shahid Bahonar University of Kerman.

Authors' contributions

H.A.N., and A.E., lead the project, and designed and conceived the study. H.K.K., and A.E., provided samples. H.A.N., analyzed and interpreted the data. H.A.N. drafted the manuscript. H.A.N., A.E., and H.K.K., revised the manuscript. All authors revised and approved the final manuscript.

Funding

This study was funded by Iran National Science Foundation (INSF; Grant number: 99013627) and National Natural Science Foundation of China (32050410304). The funders had no role in study design, data collection and analysis, decision to publish, or preparation of the manuscript.

Availability of data and materials

The whole genome sequencing data for all chicken individuals generated in this study have been deposited at NCBI SRA Database with accession code: PRJNA807738 or accessible through <https://www.ncbi.nlm.nih.gov/bioproject/PRJNA807738>. The NCBI accession numbers used in this study can be found in Additional file 1: Table S1. Furthermore, the whole genome sequencing data, BAM files, and genotypes (VCF) have been submitted in the ChickenSD database (<http://bigd.big.ac.cn/chickensd/>).

Declarations

Ethics approval and consent to participate

This study was carried out in compliance with the ARRIVE guidelines 2.0 (<https://arriveguidelines.org/>). All experimental protocols and blood sampling procedure were approved by ethic committee of department of animal science in Shahid Bahonar University of Kerman. No bird was slaughtered and harmed (Permit number: 93–192). This investigation is in accordance with relevant guidelines and regulations of Shahid Bahonar University of Kerman.

Consent for publication

Not applicable.

Competing interests

The authors declare that they have no competing interests.

Received: 29 November 2021 Accepted: 2 March 2022

Published online: 22 March 2022

References

- Andersson L. Domestic animals as models for biomedical research. *Ups J Med Sci.* 2016;121(1):1–11. <https://doi.org/10.3109/03009734.2015.1091522>.
- Peters J, Lebrasseur O, Deng H, Larson G. Holocene cultural history of red jungle fowl (*Gallus gallus*) and its domestic descendant in East Asia. *Quat Sci Rev.* 2016;142:102–19.

3. Guèye EHF. Village egg and fowl meat production in Africa. *Worlds Poul Sci J.* 1998;54(1):82–6.
4. Khan AG. Indigenous breeds, crossbreds and synthetic hybrids with modified genetic and economic profiles for rural family and small scale poultry farming in India. *Worlds Poul Sci J.* 2008;64:405–15.
5. Berg P, Moseley C, Haerter JO. Strong increase in convective precipitation in response to higher temperatures. *Nat Geosci.* 2013;6:181–5.
6. Zhang X, Alexander L, Hegerl GC, et al. Indices for monitoring changes in extremes based on daily temperature and precipitation data. *Rev Clim Change.* 2011;2:851–70.
7. Pourkhorsandi H, Gattacceca J, Rochette P, D'Orazio M, Kamali H, de Avillez R, Letichevsky S, Djmalali M, Mirnejad H, Debaille V, Jull AJT. Meteorites from the Lut desert (Iran). 2019;54(8):1737–63. <https://doi.org/10.1111/maps.13311>.
8. Nouri M, Homaei M. Drought trend, frequency and extremity across a wide range of climates over Iran. 2020;27:2. <https://doi.org/10.1002/met.1899>.
9. Vali N. Indigenous chicken production in Iran: a review. *Pak J Biol Sci.* 2008;11:2525–31.
10. Gorjian S, Ghobadian B. Solar desalination: A sustainable solution to water crisis in Iran. *Renew Sustain Energy Rev.* 2015;48:571–84. <https://doi.org/10.1016/j.rser.2015.04.009>.
11. Islam MA, Nishibori M. Indigenous naked neck chicken: a valuable genetic resource for Bangladesh. *World Poultry Sci J.* 2009;65(1):125–38.
12. Mohammadabadi MR, Nikbakhti M, Mirzaee HR, et al. Genetic variability in three native Iranian chicken populations of the Khorasan province based on microsatellite markers. *Russ J Genet.* 2010;46:505–9. <https://doi.org/10.1134/S1022795410040198>.
13. Shahbazi S, Mirhosseini SZ, Romanov MN. Genetic Diversity in Five Iranian Native Chicken Populations Estimated by Microsatellite Markers. *Biochem Genet.* 2007;45:63–75. <https://doi.org/10.1007/s10528-006-9058-6>.
14. Dehghanzadeh H, Mirhosseini SZ, Romanov MN, Ghorbani A. Evaluation of Genetic Variability and Distances among Five Iranian Native Chicken Populations using RAPD Markers. *Pak J Biol Sci.* 2009;12:866–71.
15. Sohrobi SS, Mohammadabadi MR, Wu DD, Esmailzadeh A. Detection of breed-specific copy number variations in domestic chicken genome. *Genome.* 2018;61:7–14. <https://doi.org/10.1139/gen-2017-0016>.
16. Kharrati-Koopae H, Ebrahimie E, Dadpasand M, et al. Genomic analysis reveals variant association with high altitude adaptation in native chickens. *Sci Rep.* 2019;9:9224. <https://doi.org/10.1038/s41598-019-45661-7>.
17. Dagher NJ. *Poultry Production in Hot Climates* 2nd edition. Printed and bound in the UK by Cromwell Press, Trowbridge. ISBN-13. 2008.
18. Foll M, Gaggiotti O. A genome-scan method to identify selected loci appropriate for both dominant and codominant markers: a Bayesian perspective. *Genetics.* 2008;180(2):977–93. <https://doi.org/10.1534/genetics.108.092221>.
19. Ekhtesasi MR, Sepehr A. Investigation of wind erosion process for estimation, prevention, and control of DSS in Yazd-Ardakan plain. *Environ Monit Assess.* 2009;159:267.
20. Rostamzadeh Mahdabi E, Esmailzadeh A, Ayatollahi Mehrgardi A, et al. A genome-wide scan to identify signatures of selection in two Iranian indigenous chicken ecotypes. *Genet Sel Evol.* 2021;53:72.
21. Bolger AM, Lohse M, Usadel B. Trimmomatic: a flexible trimmer for Illumina sequence data. *Bioinformatics.* 2014;30(15):2114–20.
22. Li H, Durbin R. Fast and accurate short read alignment with Burrows-Wheeler transform. *Bioinformatics.* 2009;15:1754–60.
23. Li H, Handsaker B, Wysoker A, Fennell T, Ruan J, Homer N, Marth G, Abecasis G, Durbin R, 1000 Genome Project Data Processing Subgroup. The Sequence Alignment/Map format and SAMtools. *Bioinformatics.* 2009;25:2078–9.
24. McKenna A, Hanna M, Banks E, Sivachenko A, Cibulskis K, Kernytsky A, Garimella K, Altshuler D, Gabriel S. The Genome Analysis Toolkit: A MapReduce framework for analyzing next-generation DNA sequencing data. *Genome Res.* 2010;20:1297–303.
25. Browning SR, Browning BL. Rapid and accurate haplotype phasing and missing-data inference for whole-genome association studies by use of localized haplotype clustering. *Am J Hum Genet.* 2007;81(5):1084–97. <https://doi.org/10.1086/521987>.
26. Asadollahpour Nanaei H, Esmailzadeh A, Ayatollahi Mehrgardi A, et al. Comparative population genomic analysis uncovers novel genomic footprints and genes associated with small body size in Chinese pony. *BMC Genom.* 2020;21:496. <https://doi.org/10.1186/s12864-020-06887-2>.
27. Price MN, Dehal PS, Arkin AP. FastTree 2 – Approximately Maximum-Likelihood Trees for Large Alignments. *PLoS ONE.* 2010;5(3):e9490. <https://doi.org/10.1371/journal.pone.0009490>.
28. Calus MPL, Vandenplas J. SNPPrune: an efficient algorithm to prune large SNP array and sequence datasets based on high linkage disequilibrium. *Genet Sel Evol.* 2018;50:34.
29. Purcell S, Neale B, Todd-Brown K, Thomas L, Ferreira MA, Bender D, Maller J, Sklar P, de Bakker PI, Daly MJ, Sham PC. PLINK: a tool set for whole-genome association and population-based linkage analyses. *Am J Hum Genet.* 2007;81:559–75.
30. Yang J, Lee SH, Goddard ME, Visscher PM. GCTA: a tool for genome-wide complex trait analysis. *Am J Hum Genet.* 2011;88:76–82.
31. Alexander DH, Novembre J, Lange K. Fast model-based estimation of ancestry in unrelated individuals. *Genome Res.* 2009;19:1655–64.
32. Lawson DJ, Hellenthal G, Myers S, Falush D. Inference of population structure using dense haplotype data. *Plos Genet.* 2012;8:e1002453.
33. Zhang C, Dong SS, Xu JY, He WM, Yang TL. PopLDdecay: a fast and effective tool for linkage disequilibrium decay analysis based on variant call format files. *Bioinformatics.* 2019;35(10):1786–8.
34. Weir BS, Cockerham CC. Estimating F-Statistics for the Analysis of Population Structure. *Evolution.* 1984;38(6):1358–70.
35. Spolaore E, Wacziarg R. The Diffusion of Development. *Q J Econ.* 2009;124(2):469–529. <https://doi.org/10.1162/qjec.2009.124.2.469>.
36. Danecek P, Auton A, Abecasis G, Albers CA, Banks E, DePristo MA, Handsaker RE, Lunter G, Marth GT, Sherry ST, et al. The variant call format and VCFtools. *Bioinformatics.* 2011;27(15):2156–8.
37. Cheng CY, Tu WL, Chen CJ, et al. Functional genomics study of acute heat stress response in the small yellow follicles of layer-type chickens. *Sci Rep.* 2018;8(1):1320. <https://doi.org/10.1038/s41598-017-18335-5>.
38. Xia Z, Huang L, Yin P, et al. L-Arginine alleviates heat stress-induced intestinal epithelial barrier damage by promoting expression of tight junction proteins via the AMPK pathway. *Mol Biol Rep.* 2019;46:6435–51. <https://doi.org/10.1007/s11033-019-05090-1>.
39. Slawinska A, Hsieh JC, Schmidt CJ, Lamont SJ. Heat stress and lipopolysaccharide stimulation of chicken macrophage-like cell line activates expression of distinct sets of genes. *PLoS ONE.* 2016;11(10):e0164575. <https://doi.org/10.1371/journal.pone.0164575>.
40. Luo QB, Song XY, Ji CL, Zhang XQ, Zhang DX. Exploring the molecular mechanism of acute heat stress exposure in broiler chickens using gene expression profiling. *Gene.* 2014;546:200–5. <https://doi.org/10.1016/j.gene.2014.06.017>.
41. Rehman SU, Nadeem A, Javed M, Hassan F, Luo X, Khalid RB, Liu Q. Genomic identification, evolution and sequence analysis of the heat-shock protein gene family in buffalo. *Genes.* 2020;11:1388. <https://doi.org/10.3390/genes11111388>.
42. Zoppino FCM, Guerrero-Gimenez ME, Castro GN, et al. Comprehensive transcriptomic analysis of heat shock proteins in the molecular subtypes of human breast cancer. *BMC Cancer.* 2018;18:700. <https://doi.org/10.1186/s12885-018-4621-1>.
43. Liu H, Zhang M, Han H, et al. Comparison of the expression of cytokine genes in the bursal tissues of the chickens following challenge with infectious bursal disease viruses of varying virulence. *Virology.* 2010;7:364. <https://doi.org/10.1186/1743-422X-7-364>.
44. Hong YH, Lillehoj HS, Lee SH, Dalloul RA, Lillehoj EP. Analysis of chicken cytokine and chemokine gene expression following *Eimeria acervulina* and *Eimeria tenella* infections. *Vet Immunol Immunopathol.* 2006;114:209–23.
45. Feng H, Zhang Y-B, Gui J-F, Lemon SM, Yamane D. Interferon regulatory factor 1 (IRF1) and anti-pathogen innate immune responses. *PLoS Pathog.* 2021;17(1):e1009220. <https://doi.org/10.1371/journal.ppat.1009220>.
46. Yu J, Bao E. Effect of acute heat stress on heat shock protein 70 and its corresponding mRNA expression in the heart, liver, and kidney of broilers. *Asian-Australas J Anim Sci.* 2008;21:1116–26.
47. Duangduen C, Duangjinda M, Katawatin S, Aengwanich W. Effects of heat stress on growth performance and physiological response in Thai indigenous chickens (Chee) and broilers. *Kasetsart Vet.* 2007;17:122–33.

48. Portner HO. Climate change and temperature-dependent biogeography: oxygen limitation of thermal tolerance in animals. *Naturwissenschaften*. 2001;88:137–46.
49. Wang SH, Cheng CY, Tang PC, et al. Acute heat stress induces differential gene expressions in the 462 testes of a broiler-type strain of Taiwan country chickens. *PLoS One*. 2015;10:e0125816.
50. Howard JT, Kachman SD, Snelling WM, et al. Beef cattle body temperature during climatic stress: a genome-wide association study. *Int J Biometeorol*. 2014;58:1665–72. <https://doi.org/10.1007/s00484-013-0773-5>.
51. Wan Y, Ma C, Wei P, Fang Q, Guo X, Zhou B, Jiang R. Dynamic Expression of HSP90B1 mRNA in the Hypothalamus of Two Chinese Chicken Breeds under Heat Stress and Association Analysis with a SNP in Huainan Chickens. *Czech J Anim Sci*. 2017;62(2):82–7. <https://doi.org/10.17221/8/2016-CJAS>.
52. Charoensook R, Gatphayak K, Sharifi AR, Chaisongkram C, Brenig B, Knorr C. Polymorphisms in the bovine HSP90AB1 gene are associated with heat tolerance in Thai indigenous cattle. *Trop Anim Health Prod*. 2012;44:921–8.
53. Singh AK, Upadhyay RC, Malakar D, Kumar S, Singh SV. Effect of thermal stress on HSP70 expression in dermal fibroblast of zebu (Tharparkar) and crossbred (Karan-Fries) cattle. *J Therm Biol*. 2014;43:46–53.
54. Jin Y, Zhou T, Geng X, Liu S, Chen A, Yao J, Jiang C, Tan S, Su B, Liu Z. A genome-wide association study of heat stress-associated SNPs in catfish. *Anim Genet*. 2017;48(2):233–6. <https://doi.org/10.1111/age.12482>.
55. Li R, Li C, Chen H, Li R, Chong Q, Xiao H, Chen S. Genome-wide scan of selection signatures in Dehong humped cattle for heat tolerance and disease resistance. *Anim Genet*. 2020;51(2):292–9. <https://doi.org/10.1111/age.12896>.
56. Psifidi A, Banos G, Matika O, et al. Genome-wide association studies of immune, disease and production traits in indigenous chicken ecotypes. *Sel Evol*. 2016;48:74.
57. Mpenda FN, Schilling MA, Campbell Z, Mngumi EB, Buza J. *J Appl Poult Res*. 2019;28(1):1–12.
58. BeigiNasiri MT, Shokri F, Khanian E, Tavakoli S. Study on polymorphism of ISfahan native chickens population using microsatellite Markers. *Int J Poult Sci*. 2007;6(11):835–7.
59. Maw AA, Kawabe K, Shimogiri T, Rerkamnuaychoke W, Kawamoto Y, Masuda S, Okamoto S. Genetic diversity and population structure in native chicken populations from Myanmar, Thailand and Laos by using 102 indels markers. *Asian-australas J Anim Sci*. 2015;28(1):14–9. <https://doi.org/10.5713/ajas.14.0212>.
60. Mekchay S, Supakankul P, Assawamakin A, et al. Population structure of four Thai indigenous chicken breeds. *BMC Genet*. 2014;15:40. <https://doi.org/10.1186/1471-2156-15-40>.
61. Al-Atiyat R. Genetic diversity of indigenous chicken ecotypes in Jordan. *Afr J Biotechnol*. 2009;9(41):7014–9.
62. Berima MEA, Yousif IA, Eding H, Weigend S, Musa HH. Population structure and genetic diversity of Sudanese native chickens. *Afr J Biotechnol*. 2013;12(45):6424–31.
63. Mwambene PL, Kyallo M, Machuka E, Githae D, Pelle R. Genetic diversity of 10 indigenous chicken ecotypes from Southern Highlands of Tanzania based on Major Histocompatibility Complex-linked microsatellite LEI0258 marker typing. *Poult Sci*. 2019;98(7):2734–46.
64. Jayashankar C, Nagaraj S, Kotresh AM, Byregowda SM. Microsatellite based genetic diversity study in indigenous chicken ecotypes of Karnataka. *Vet World*. 2015;8(8):970–6.
65. Witte-Thompson JK, Pluzhnikov A, Cox NJ. Rational Inferences about Departures from Hardy-Weinberg Equilibrium. *Am J Hum Genet*. 2005;76:967–86.
66. Sharma D, Appa-Rao KBC, Singh RV, Totey SM. Genetic diversity among chicken breeds estimated through randomly amplified polymorphic DNA. *Anim Biotechnol*. 2001;12(2):111–20.
67. Sewalem A, Johansson K, Wilhelmson M, Lillpers K. Inbreeding and inbreeding depression on reproduction and production traits of White Leghorn lines selected for egg production traits. *Br Poult Sci*. 1999;40(2):203–8.
68. Waples RK, Larson WA, Waples RS. Estimating contemporary effective population size in non-model species using linkage disequilibrium across thousands of loci. *Heredity (Edinb)*. 2016;117:233–40. <https://doi.org/10.1038/hdy.2016.60>.
69. Hellwege J, Keaton J, Giri A, Gao X, Velez Edwards DR, Edwards TL. Population stratification in genetic association studies. *Curr Protoc Hum Genet*. 2017;95:1.22.1-1.22.23.
70. Xu NY, Si W, Li M, Gong M, Larivière JM, et al. Genome-wide scan for selective footprints and genes related to cold tolerance in Chantecler chickens. *Zool Res*. 2021;42(6):710–20.
71. Asadollahpour-Nanaei H, Dehghan-Qanateqestani M, Esmailizadeh A. Whole-genome resequencing reveals selection signatures associated with milk production traits in African Kenana dairy zebu cattle. *Genomics*. 2020;112(1):880–5. <https://doi.org/10.1016/j.ygeno.2019.06.002>.
72. Luo W, Luo C, Wang M, et al. Genome diversity of Chinese indigenous chicken and the selective signatures in Chinese gamecock chicken. *Sci Rep*. 2020;10:14532.
73. Nie C, Almeida P, Jia Y, Bao H, Ning Z, Qu L. Genome-Wide Single-Nucleotide Polymorphism Data Unveil Admixture of Chinese Indigenous Chicken Breeds with Commercial Breeds. *Genome Biol Evol*. 2019;11(7):1847–56. <https://doi.org/10.1093/gbe/evz128>.
74. Zhang J, Nie C, Li X, Ning Z, Chen Y, Jia Y, Han J, Wang L, Lv X, Yang W, Qu L. Genome-wide population genetic analysis of commercial, indigenous, game, and wild chickens using 600K SNP microarray data. *Front Genet*. 2020;11:543294.
75. Talebi R, Szmatoła T, Mészáros G, Qanbari S. Runs of Homozygosity in Modern Chicken Revealed by Sequence Data. *G3 (Bethesda)*. 2020;10(12):4615–23.
76. Shariatmadari F. Poultry production and the industry in Iran. *Worlds Poult Sci J*. 2000;56(1):55–65. <https://doi.org/10.1079/WPS20000006>.
77. Wolfenson D, Roth Z, Meidan R. Impaired reproduction in heat-stressed cattle: basic and applied aspects. *Anim Reprod Sci*. 2000;60:535–47.
78. Monson MS, Van Goor AG, Ashwell CM, et al. Immunomodulatory effects of heat stress and lipopolysaccharide on the bursal transcriptome in two distinct chicken lines. *BMC Genom*. 2018;19:643. <https://doi.org/10.1186/s12864-018-5033-y>.
79. Duangjinda M, Tunim S, Duangdaen C, Boonkum W. Hsp70 genotypes and heat tolerance of commercial and native chickens reared in hot and humid conditions. *Braz J Poult Sci*. 2017;19:1. <https://doi.org/10.1590/1806-9061-2016-0245>.
80. Wang Y, Saelao P, Chanthavixay K, Gallardo R, Bunn D, Lamont SJ, Dekkers JM, Kelly T, Zhou H. Physiological responses to heat stress in two genetically distinct chicken inbred lines. *Poult Sci*. 2018;97(3):770–80.
81. Rimoldi S, Lasagna E, Sarti FM, Marelli SP, Cozzi MC, Bernardini G, Terova G. Expression profile of six stress-related genes and productive performances of fast and slow growing broiler strains reared under heat stress conditions. *Meta Gene*. 2015;6:17–25.
82. Hassanpour H, Khosravi Alekoochi Z, Madreseh S, Bahadoran S, Nasiri L. Variation of heat shock protein gene expression in the brain of cold-induced pulmonary hypertensive chickens. *Br Poult Sci*. 2016;57(5):636–42. <https://doi.org/10.1080/00071668.2016>.
83. Cedraz H, Gromboni JGG, Garcia AAP Junior, Farias Filho RV, Souza TM, Oliveira ERD, et al. Heat stress induces expression of HSP genes in genetically divergent chickens. *PLoS ONE*. 2017;12(10):e0186083. <https://doi.org/10.1371/journal.pone.0186083>.
84. Hong SW, Vierling E. Hsp101 is necessary for heat tolerance but dispensable for development and germination in the absence of stress. *Plant J*. 2001;27(1):25–35.
85. Feder ME, Hofmann GE. Heat-shock proteins, molecular chaperones, and the stress response: evolutionary and ecological physiology. *Annu Rev Physiol*. 1999;61:243–82.
86. Mazzi CM, Ferro JA, Ferro MIT, Savino VJM, Coelho AAD, Macari M. Polymorphism analysis of the HSP70 stress gene in Broiler chickens (*Gallus gallus*) of different breeds. *Genet Mol Biol*. 2003;26:275–81.
87. Kiang JG, Tsokos GC. Heat shock protein 70 kDa: molecular biology, biochemistry, and physiology. *Pharmacol Ther*. 1998;80(2):183–201.
88. Mahmood KZ, Edens FW, Eisen EJ, Havenstein GB. Effect of ascorbic acid and acute heat exposure on heat shock protein 70 expression by young white Leghorn chickens. *Comp Biochem Physiol C Toxicol Pharmacol*. 2003;136:329–35.
89. Galal A, Radwan LM. Identification of single nucleotide polymorphism in heat shock protein HSP70 and HSP90 after four selection generations in two lines of chickens. *Ann Agric Sci*. 2020;65(2):124–8.

90. Maggio M, Guralnik JM, Longo DL, Ferrucci L. Interleukin-6 in aging and chronic disease: a magnificent pathway. *J Gerontol A*. 2006;61:575–84. <https://doi.org/10.1093/gerona/61.6.575>.
91. Susta L, Diel DG, Courtney S, et al. Expression of chicken interleukin-2 by a highly virulent strain of Newcastle disease virus leads to decreased systemic viral load but does not significantly affect mortality in chickens. *Virology*. 2015;12:122. <https://doi.org/10.1186/s12985-015-0353-x>.
92. Chen WT, Huang WY, Chen T, et al. Structure and function of chicken interleukin-1 beta mutants: uncoupling of receptor binding and in vivo biological activity. *Sci Rep*. 2016;6:27729. <https://doi.org/10.1038/srep27729>.
93. Truong AD, Park B, Ban J, et al. The novel chicken interleukin 26 protein is overexpressed in T cells and induces proinflammatory cytokines. *Vet Res*. 2016;47:65. <https://doi.org/10.1186/s13567-016-0342-0>.
94. Psifidi A, Banos G, Matika O, et al. Genome-wide association studies of immune, disease and production traits in indigenous chicken ecotypes. *Genet Sel Evol*. 2016;48(1):74. <https://doi.org/10.1186/s12711-016-0252-7>.
95. Fleming DS, Weigend S, Simianer H, Weigend A, Rothschild M, Schmidt C, Ashwell C, Persia M, Reecy J, Lamont SJ. Genomic comparison of indigenous african and northern european chickens reveals putative mechanisms of stress tolerance related to environmental selection pressure. *G3 (Bethesda)*. 2017;7(5):1525–37. <https://doi.org/10.1534/g3.117.041228>.
96. Yamagishi N, Saito Y, Hatayama T. Mammalian 105 kDa heat shock family proteins suppress hydrogen peroxide-induced apoptosis through a p38 MAPK-dependent mitochondrial pathway in HeLa cells. *FEBS J*. 2008;275:4558–70.
97. Deane CAS, Brown IR. Differential Targeting of Hsp70 heat shock proteins HSPA6 and HSPA1A with components of a protein disaggregation/refolding machine in differentiated human neuronal cells following thermal stress. *Front Neurosci*. 2017;11:227. <https://doi.org/10.3389/fnins.2017.00227>.
98. Tian S, Zhou X, Phuntsok T, Zhao N, et al. Genomic analyses reveal genetic adaptations to tropical climates in chickens. *iScience*. 2020;23:101644.
99. Meluzzi A, Sirri F. Welfare of broiler chickens. *Ital J Anim Sci*. 2009;8:161–73.

Publisher's Note

Springer Nature remains neutral with regard to jurisdictional claims in published maps and institutional affiliations.

Ready to submit your research? Choose BMC and benefit from:

- fast, convenient online submission
- thorough peer review by experienced researchers in your field
- rapid publication on acceptance
- support for research data, including large and complex data types
- gold Open Access which fosters wider collaboration and increased citations
- maximum visibility for your research: over 100M website views per year

At BMC, research is always in progress.

Learn more biomedcentral.com/submissions

