



The association between stroke and COVID-19-related mortality: a systematic review and meta-analysis based on adjusted effect estimates

Shuwen Li¹ · Jiahao Ren¹ · Hongjie Hou¹ · Xueya Han¹ · Jie Xu¹ · Guangcai Duan¹ · Yadong Wang² · Haiyan Yang¹ 

Received: 4 December 2021 / Accepted: 17 March 2022 / Published online: 24 March 2022
© Fondazione Società Italiana di Neurologia 2022

Abstract

Objective To investigate the association between stroke and the risk for mortality among coronavirus disease 2019 (COVID-19) patients.

Methods We performed systematic searches through electronic databases including PubMed, Embase, Scopus, and Web of Science to identify potential articles reporting adjusted effect estimates on the association of stroke with COVID-19-related mortality. To estimate pooled effects, the random-effects model was applied. Subgroup analyses and meta-regression were performed to explore the possible sources of heterogeneity. The stability of the results was assessed by sensitivity analysis. Publication bias was evaluated by Begg's test and Egger's test.

Results This meta-analysis included 47 studies involving 7,267,055 patients. The stroke was associated with higher COVID-19 mortality (pooled effect = 1.30, 95% confidence interval (CI): 1.16–1.44; $I^2 = 89%$, $P < 0.01$; random-effects model). Subgroup analyses yielded consistent results among area, age, proportion of males, setting, cases, effect type, and proportion of severe COVID-19 cases. Statistical heterogeneity might result from the different effect type according to the meta-regression ($P = 0.0105$). Sensitivity analysis suggested that our results were stable and robust. Both Begg's test and Egger's test indicated that potential publication bias did not exist.

Conclusion Stroke was independently associated with a significantly increased risk for mortality in COVID-19 patients.

Keywords COVID-19 · Stroke · Mortality · Adjusted effect estimates · Meta-analysis

Introduction

A series of studies have explored the relationship between comorbid stroke and the risk of mortality in coronavirus disease 2019 (COVID-19), but the conclusions were inconsistent or conflicting. Two previous meta-analyses on the basis of un-adjusted effect estimates failed to observe that

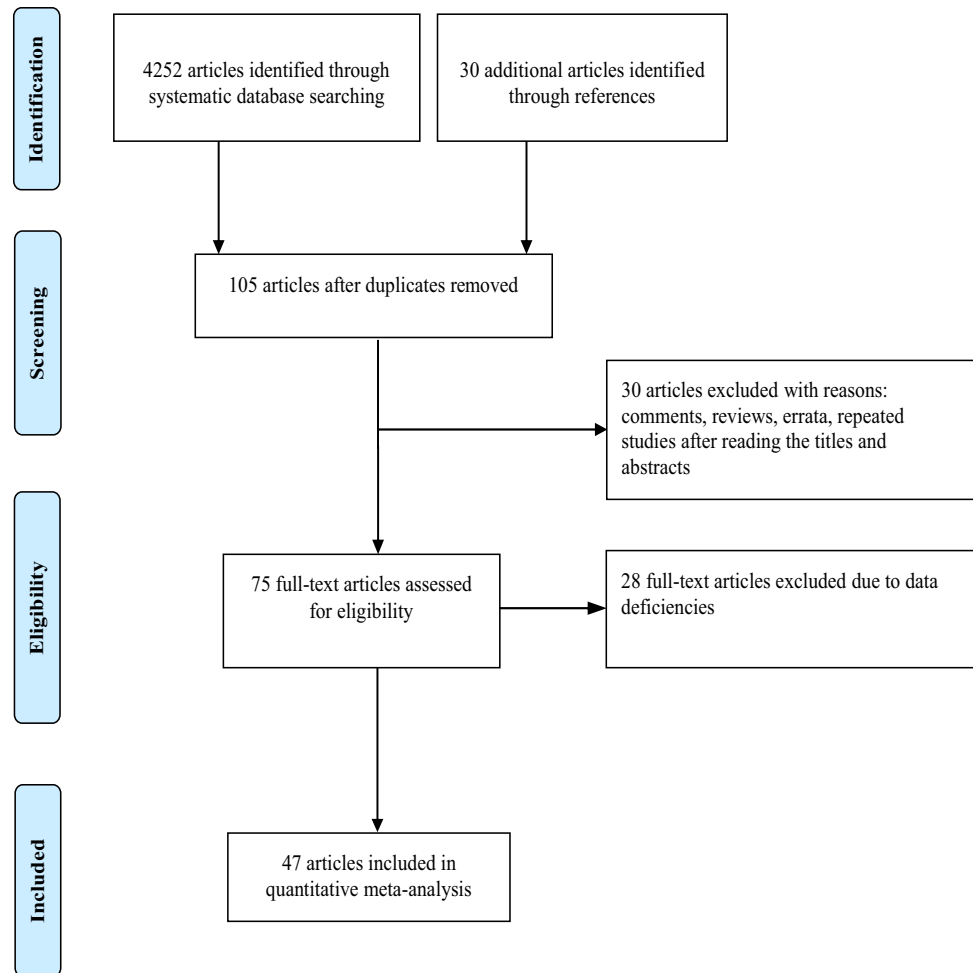
comorbid stroke was significantly related to an increased risk of mortality in COVID-19 patients [1, 2]. To our knowledge, several risk factors including age, gender, and other underlying conditions (diabetes, hypertension, chronic kidney disease, and chronic obstructive pulmonary disease and others) have been reported to have a significant impact on the clinical progression of patients with COVID-19 [3–8]. This meant that these factors might affect the association between stroke and COVID-19 mortality. For example, the results of univariate analysis in Muhammad et al.'s study [9] showed that stroke was a risk factor for the mortality of COVID-19 (odds ratio (OR) = 2.73, 95% confidence interval (CI): 1.08–6.88), while the results of multivariate analysis demonstrated that stroke was not significantly associated with COVID-19 mortality (adjusted OR = 1.34,

✉ Haiyan Yang
yhy@zzu.edu.cn

¹ Department of Epidemiology, School of Public Health, Zhengzhou University, No. 100 of Science Avenue, Zhengzhou 450001, China

² Department of Toxicology, Henan Center for Disease Control and Prevention, Zhengzhou 450016, China

Fig. 1 Flow chart of the process of study selection



95% CI: 0.45–4.02). Similar findings were also observed by Lee et al. [10]. Therefore, a meta-analysis based on adjusted effect estimates was performed to investigate the association of stroke with fatal outcome in COVID-19 patients.

Methods

The Preferred Reporting Items for Systematic Reviews and Meta-Analyses (PRISMA) Checklist was used to improve the reporting of this meta-analysis. Databases including PubMed, Web of Science, Scopus, and Embase were searched up to November 22, 2021, to find the relevant studies. The following search terms were used: (“COVID-19” OR “coronavirus disease 2019” OR “SARS-CoV-2” OR “novel coronavirus” OR “2019-nCoV”) AND (“stroke” OR “strokes” OR “cerebral stroke” OR “acute cerebrovascular accident” OR “cerebral infarction”) AND (“mortality” OR “death” OR “fatality” OR “deceased” OR

“non-survivor”). Moreover, to find more grey literature on this topic, relevant references of the included studies were also taken into account.

The following inclusion criteria were defined for the selection of the papers: (1) articles should be published in English; (2) COVID-19 patients were diagnosed according to the World Health Organization (WHO) standards; (3) articles reported adjusted effect estimates on the association between stroke and the risk of mortality among COVID-19 patients. Repeated articles, case reports, reviews, comments, protocols, errata, and articles without sufficient information were excluded. Only the articles with the most complete data could be included if studies were based on the same data sources.

Two authors selected eligible studies independently and screened the titles and abstracts on the basis of the inclusion criteria. Any disagreement would be resolved through discussion. The primary message included the following data: author, country, cohort type, cases, numbers

Table 1 Characteristics of the eligible studies included in this meta-analysis

Author	Country	Cohort type	Cases (<i>n</i>)	No. of stroke (%)	Age (years)	Severe COVID-19 (%)	Male (%)	Setting	Adjusted-effect (95% CI)
Atkins JL	UK	Retrospective	507	23 (4.5)	74.3 ± 4.5	NA	NA	Hospitalized	OR = 1.16 (0.75–1.81)
Perez-Guzman PN	UK	Retrospective	614	NA	69 ± 25	13.03	62.21	Hospitalized	OR = 0.89 (0.48–1.65)
Kummer BR	USA	Retrospective	3,248	387 (11.9)	67.0 ± 16.2	NA	85.19	Hospitalized	OR = 1.28 (1.01–1.63)
Gupta A	USA	Retrospective	1,296	135 (10.4)	69.8 ± 13.9	22.22	56.48	Hospitalized	OR = 1.177 (0.821–1.688)
Nimkar A	USA	Retrospective	327	91 (27.8)	71 (59–82)	NA	55.7	Hospitalized	OR = 1.1 (0.6–1.9)
Reilev M	Denmark	Retrospective	11,122	542 (4.9)	48 (33–62)	2.82	42	Hospitalized	OR = 1.4 (1.1–1.8)
Miller J	USA	Retrospective	3,633	1,758 (51.8)	58.4 ± 18.1	NA	46.2	All patients	OR = 0.94 (0.71–1.24)
Graziani D	Spain	Retrospective	793	27 (3.4)	75 ± 12	NA	83	All patients	OR = 0.76 (0.58–1.71)
Clift AK*	UK	Prospective	6,083,102	129,699 (2.13)	48.2 ± 18.6	NA	49.9	All patients	HR = 1.28 (1.19–1.39)
Liu J	China	Retrospective	774	43 (5.6)	64 (54–73)	100	58.4	Hospitalized	HR = 0.99 (0.58–1.7)
Sheshah E	Saudi Arabia	Retrospective	300	5 (1.7)	49.7 ± 13.2	7.0	86.3	Hospitalized	OR = 1.5 (0.2–10.8)
Rossi L	Italy	Retrospective	590	21 (3.6)	76.2 (68.2–82.6)	14.24	67.6	All patients	HR = 1.721 (0.985–3.008)
FAI2R**	France	Retrospective	694	25 (3.7)	55.9	12.54	33.4	All patients	OR = 1.52 (0.51–4.56)
Alguwaihes AM	Saudi Arabia	Retrospective	439	17 (3.9)	55 (19–101)	28.02	68.3	Hospitalized	HR = 1.3 (0.5–3.8)
Ling SF	UK	Retrospective	444	40 (9.0)	74 (63–83)	7.6	55.2	Hospitalized	OR = 1.09 (0.54–2.19)
Hobbs ALV	USA	Retrospective	502	57 (11.4)	62 (49–71)	35.66	55.2	Hospitalized	OR = 1.25 (0.55–2.72)
Ahlstrom B	Sweden	Retrospective	1,981	59 (3.0)	61 (52–69)	100	74	Hospitalized	HR = 1.04 (0.75–1.44)
Eskandar EN	USA	Retrospective	4,711	27 (2.4)	63.4	NA	53.3	Hospitalized	HR = 1.75 (1.4–2.1)
Muhammad R	USA	Retrospective	200	22 (11.0)	58.9 ± 15.1	35.5	60.5	Hospitalized	OR = 1.34 (0.45–4.02)
Kvale R	Norway	Retrospective	8,809	125 (1.4)	NA	NA	49.5	All patients	OR = 1.5 (1.1–2.2)
Gonzalez-Fajardo JA	Spain	Prospective	106	15 (14.15)	65.66 ± 15.49	8.87	67.92	Hospitalized	HR = 8.812 (2.25–34.516)
Efros O	Israel	Retrospective	320	29 (9.06)	63.66 ± 16.87	NA	64.06	Hospitalized	HR = 1.90 (0.83–4.32)
Aoun M	Lebanon	Retrospective	231	14 (6.1)	61.46 ± 13.99	19.91	55.4	Hospitalized	OR = 2.71 (0.89–8.28)
Caro-Codon J	Spain	Retrospective	918	41 (4.5)	63.2 ± 15.5	16.9	60.1	Hospitalized	HR = 1.61 (0.89–2.9)
Galvez-Barron C	Spain	Retrospective	103	13 (12.6)	86.75 ± 4.65	57.28	40.8	Hospitalized	OR = 0.85 (0.26–2.91)
Alwafi H	Saudi Arabia	Retrospective	706	88 (12.5)	48.0 ± 15.6	35.98	68.5	Hospitalized	OR = 0.25 (0.06–1.01)

Table 1 (continued)

Author	Country	Cohort type	Cases (<i>n</i>)	No. of stroke (%)	Age (years)	Severe COVID-19 (%)	Male (%)	Setting	Adjusted-effect (95% CI)
Fan FSY	China	Retrospective	3,164	NA	NA	NA	NA	Hospitalized	HR = 2.31 (1.35–3.96)
Cummins L	UK	Retrospective	1,781	138 (7.7)	59.77	8.53	55.2	Hospitalized	OR = 1.93 (1.29–2.88)
Vogels Y	Netherlands	Retrospective	114	7 (6.1)	68.0 (59.0–73.3)	100	76.3	Hospitalized	HR = 1.82 (0.62–5.33)
Azarkar Z	Iran	Retrospective	364	13(3.57)	54.28 ± 18.81	18.13	56.9	Hospitalized	OR = 5.56 (1.5–21.3)
Kelly JD	USA	Retrospective	27,640	757 (2.7)	57.59	NA	88.6	All patients	OR = 0.98 (0.75–1.29)
Panagides V	France	Retrospective	2,806	249 (8.98)	66.4 ± 16.9	12.94	57.6	Hospitalized	HR = 0.92 (0.67–1.26)
Lugon JR	Brazil	Retrospective	741	26 (3.5)	57 ± 16	28.48	61	All patients	HR = 1.37 (0.67–2.82)
Bonnet G	France	Retrospective	28,778	253 (8.9)	66.6 ± 17.0	0	57.9	Hospitalized	HR = 1.96 (1.47–2.62)
Semenzato L	France	Retrospective	87,809	5,620 (6.4)	67 ± 19	NA	53.3	Hospitalized	HR = 1.39 (1.32–1.47)
Chai C	China	Ambispective	166	4 (2.4)	65 (59–70)	NA	49	Hospitalized	HR = 3.7 (1.1–12.9)
Işık F	Turkey	Retrospective	1,897	80 (4.2)	62 (50–72)	25.83	52.7	Hospitalized	OR = 1.23 (0.608–2.486)
Bushman D	USA	Retrospective	1,029	50 (4.9)	56 (23–64)	32.8	65.5	Hospitalized	OR = 1.43 (0.78–2.62)
Bandera A	Italy	Retrospective	1,018	NA	65 ± 16	NA	NA	Hospitalized	OR = 1.15 (0.6–2.19)
Lee JH	Korea	Retrospective	7,162	200 (2.79)	47.7 ± 18.7	11.45	40.1	All patients	OR = 0.894 (0.634–1.262)
Zerbo O	USA	Retrospective	219,001	1,125 (0.5)	37.45	1.1	47.3	All patients	HR = 1.59 (1.29–1.97)
Wang B	USA	Retrospective	16,504	2,301 (13.9)	67.6 ± 12.0	17.89	47.7	All patients	HR = 1.06 (0.96–1.18)
Zagidullin NS	Russia	Retrospective	386	4 (1.04)	59 (49–66)	12.5	40.16	Hospitalized	OR = 1.09 (0.55–2.18)
Puebla Neira DA	USA	Retrospective	31,526	9,308 (29.52)	66.23 ± 12.27	23.2	53.36	Hospitalized	OR = 1.12 (1.01–1.21)
Lu Y	USA	Retrospective	608,251	10,949 (1.8)	83	2.46	32.7	All patients	HR = 0.94 (0.87–1.01)
Marques M	Spain	Retrospective	2,112	132 (6.3)	66.6 ± 17.4	16.29	42.9	Hospitalized	OR = 0.8 (0.51–1.24)
Ouattara E	France	Retrospective	98,336	6,192 (6.3)	71 (56–83)	26.19	53.8	All patients	HR = 2.91 (2.62–3.23)

* indicates combined effects based on subgroups; ** published by FAI2R /SFR/SNFMI/SOFREMIP/CRI/IMIDIATE consortium and contributors; The age (years) was presented as mean ± standard deviation or median (interquartile range, IQR); COVID-19, coronavirus disease 2019; CI, confidence interval; NA, not available; OR, odds ratio; HR, hazard ratio; USA, the United States of America; UK, the United Kingdom

of stroke, mean or median age, proportion of males, setting, proportion of severe COVID-19 cases, adjusted effect estimate, and 95% CI.

Meta-analysis was performed using the R statistical software (Version 4.1.1, The R Foundation, Vienna, Austria) with “meta” package (Version 4.19-0) to calculate the pooled effect and 95% CI on the association between

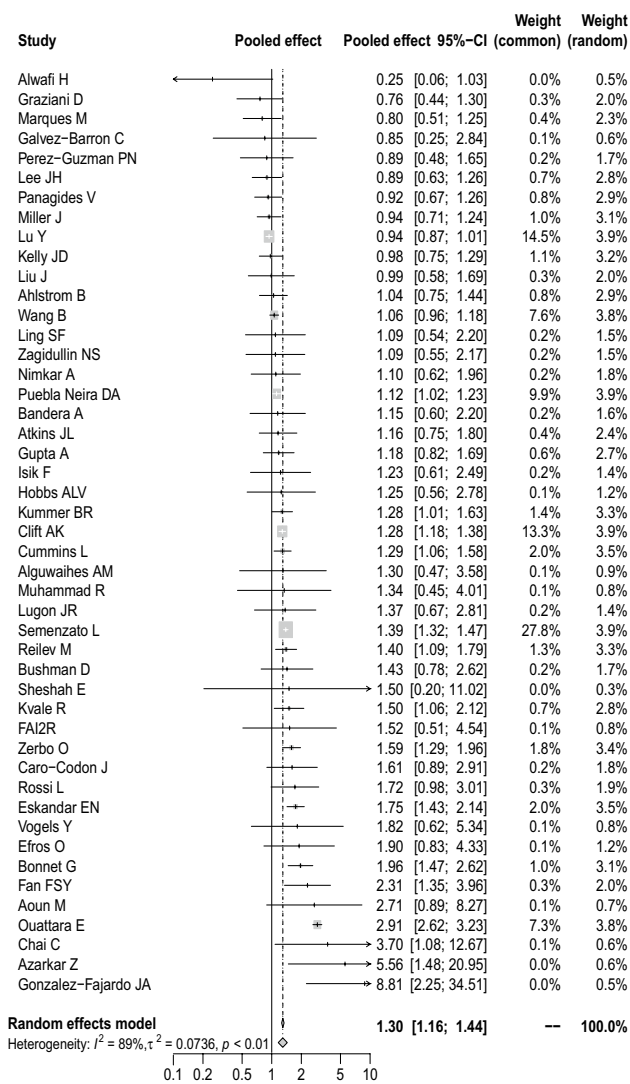


Fig. 2 Forest plot on the association of stroke with mortality of COVID-19 patients

stroke and COVID-19 mortality. The I^2 statistic was used to assess heterogeneity, which was considered significant if $I^2 > 50\%$. A random-effects model was adopted if heterogeneity was significant; otherwise, a fixed-effects model would be implemented. Subgroup analyses were conducted according to the area, age, cohort type, effect type, setting, cases, proportion of severe COVID-19 cases, and the proportion of males to explore the sources of heterogeneity. The robustness of the results was tested using sensitivity analysis by eliminating data one at a time. The authors also used the Begg’s and Egger’s tests to detect publication

bias. Statistically significant difference was considered when P value was less than 0.05.

Results

The literature search identified 4252 articles through database mining. A total of 4177 of them were excluded after screening the titles and abstracts, and 75 reports were reviewed for full-text evaluation. As a result, we included 47 studies of 7,267,055 patients [9–55]. A flowchart of the study search and selection was shown in Fig. 1. Basic characteristics of the included studies were presented in Table 1.

Overall, comorbid stroke was significantly linked to an increased risk of mortality in patients with COVID-19 (pooled effect = 1.30, 95% CI: 1.16–1.44, random-effects model, Fig. 2). This significant association was also observed in the subgroup analyses based on cases (23 studies, pooled effect = 1.27, 95% CI: 1.08–1.48 for < 1000 cases; 24 studies, pooled effect = 1.29, 95% CI: 1.13–1.46 for ≥ 1000 cases), mean age (16 studies, pooled effect = 1.26, 95% CI: 1.19–1.34 for < 60 years old; 29 studies, pooled effect = 1.30, 95% CI: 1.13–1.51 for ≥ 60 years old), proportion of males (13 studies, pooled effect = 1.16, 95% CI: 1.00–1.33 for < 50%; 31 studies, pooled effect = 1.36, 95% CI: 1.18–1.57 for $\geq 50\%$), setting (34 studies, pooled effect = 1.31, 95% CI: 1.18–1.45 for hospitalized patients; 13 studies, pooled effect = 1.25, 95% CI: 1.01–1.56 for all patients), area (11 studies, pooled effect = 1.48, 95% CI: 1.01–2.18 for Asia; 22 studies, pooled effect = 1.34, 95% CI: 1.14–1.58 for Europe; 14 studies, pooled effect = 1.18, 95% CI: 1.04–1.35 for Americas), effect estimates (20 studies, pooled hazard ratio (HR) = 1.51, 95% CI: 1.26–1.80; 27 studies, pooled OR = 1.14, 95% CI: 1.07–1.21), and proportion of severe COVID-19 cases (13 studies, pooled effect = 1.25, 95% CI: 1.03–1.51 for < 14%; 20 studies, pooled effect = 1.32, 95% CI: 1.08–1.62 for $\geq 14\%$) (Table 2). As we implemented subgroup analysis by cohort type, the association was still significant in the subgroups of retrospective studies (44 studies, pooled effect = 1.27, 95% CI: 1.14–1.42) and ambispective study (1 study, pooled effect = 3.70, 95% CI: 1.08–12.67), while no significant association was found in the subgroup of prospective studies (2 studies, pooled effect = 2.96, 95% CI: 0.45–19.31) (Table 2).

And the outputs of meta-regression demonstrated that effect type might be the source of heterogeneity ($P = 0.0105$) (Table 2). Sensitivity analysis by omitting each eligible study one by one demonstrated that our findings were stable and robust (Fig. 3). Publication bias was not found in the Begg’s test ($P = 0.0864$) and Egger’s test ($P = 0.8776$) (Fig. 4).

Table 2 Subgroup analysis and meta-regression

Variables	No. of studies	Meta-regression			Subgroup analysis Pooled ES (95% CI)	Heterogeneity		
		Tau ²	z value	P value		I ²	Tau ²	P value
Cases	-	0.0759	-0.2204	0.8255	-	-	-	-
< 1000	23	-	-	-	1.27 (1.08–1.48)	32%	0.0126	0.07
≥ 1000	24	-	-	-	1.29 (1.13–1.46)	94%	0.0825	<0.01
Age (years)	-	0.0743	-	0.3530	-	-	-	-
< 60	16	-	-	-	1.26 (1.19–1.34)	45%	0.0217	0.03
≥ 60	29	-	0.5354	0.5924	1.30 (1.13–1.51)	93%	0.0948	<0.01
NA	2	-	1.4386	0.1503	1.70 (1.27–2.28)	43%	0.0399	0.19
Male (%)	-	0.0714	-	0.3402	-	-	-	-
< 50	13	-	-	-	1.16 (1.00–1.33)	80%	0.0356	<0.01
≥ 50	31	-	1.3648	0.1723	1.36 (1.18–1.57)	89%	0.0882	<0.01
NA	3	-	0.9429	0.3457	1.44 (1.06–1.94)	54%	0.0874	0.11
Area	-	0.0743	-	0.4816	-	-	-	-
Asia	11	-	0.9885	0.3229	1.48 (1.01–2.18)	60%	0.2077	<0.01
Europe	22	-	1.0192	0.3081	1.34 (1.14–1.58)	91%	0.0964	<0.01
America	14	-	-	-	1.18 (1.04–1.35)	76%	0.0340	<0.01
Cohort type	-	0.0780	-	0.2055	-	-	-	-
Retrospective	44	-	-1.5469	0.1219	1.27 (1.14–1.42)	89%	0.0736	<0.01
Prospective	2	-	-1.1170	0.2640	2.96 (0.45–19.31)	87%	1.6176	<0.01
Ambispective	1	-	-	-	3.70 (1.08–12.67)	-	-	-
Effect	-	0.0645	-2.5578	0.0105	-	-	-	-
HR	20	-	-	-	1.51 (1.26–1.80)	95%	0.1112	<0.01
OR	27	-	-	-	1.14 (1.07–1.21)	17%	0.0027	0.21
Setting	-	0.0766	0.4118	0.6805	-	-	-	-
Hospitalized	34	-	-	-	1.31 (1.18–1.45)	56%	0.0290	<0.01
All patients	13	-	-	-	1.25 (1.01–1.56)	96%	0.1257	<0.01
Severe COVID-19 (%)	-	0.0782	-	0.9113	-	-	-	-
< 14	13	-	-	-	1.25 (1.03–1.51)	81%	0.0663	<0.01
≥ 14	20	-	0.4223	0.6728	1.32 (1.08–1.62)	93%	0.1140	<0.01
NA	14	-	0.3038	0.7613	1.30 (1.13–1.49)	62%	0.0326	<0.01

ES, effect sizes; CI, confidence interval; NA, not available; OR, odds ratio; HR, hazard ratio; COVID-19, coronavirus disease 2019

Discussion

Two previous meta-analyses did not observe the significant relationship between comorbid stroke and the increased risk of mortality in COVID-19 patients on the basis of un-adjusted effect estimates [1, 2]. In order to exclude the influence of factors such as gender, age, and comorbidities, we conducted a meta-analysis of 47 articles involving 7,267,055 patients that contained the results of multivariate analysis. The results showed that comorbid stroke was significantly associated with an increased risk of mortality in COVID-19 patients on the

basis of confounders-adjusted effect estimates, which demonstrated that stroke might be an independent risk factor for COVID-19-related mortality. The outputs of subgroup analyses stratified by age, proportion of male patients, area, cases, setting, effect type, and proportion of severe COVID-19 infection were in consistency with the conclusion above. According to the results of meta-regression, heterogeneity may originate from the different effect indicators used in the included studies.

Stroke has been confirmed increasing the risk of pulmonary complications like pneumonia, which could lead to the fatal outcome of COVID-19 patients

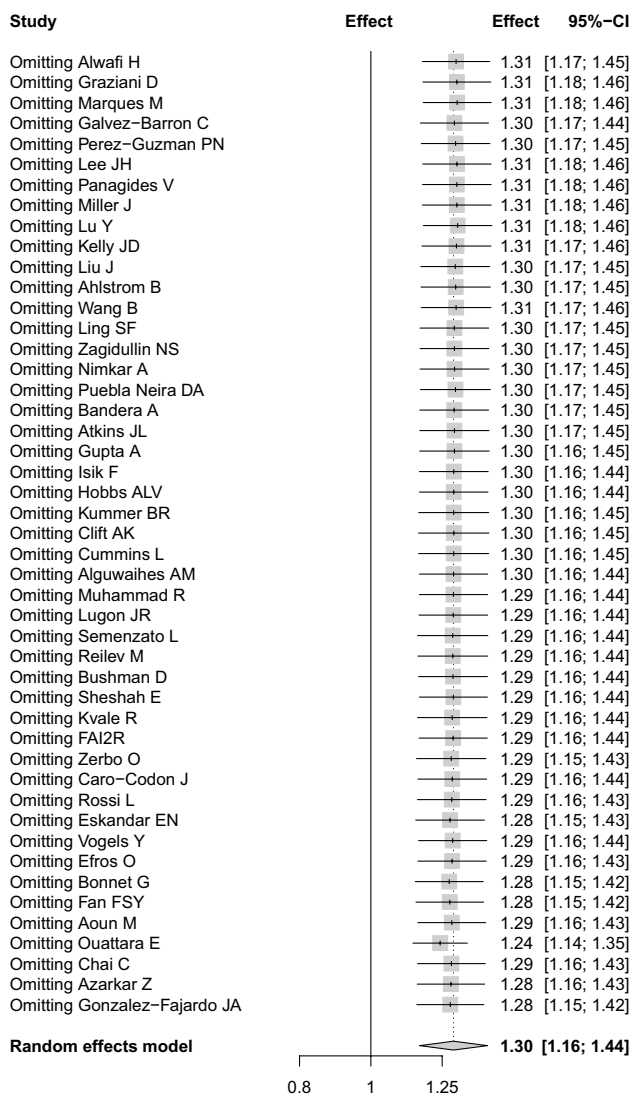


Fig. 3 Sensitivity analysis

[56–58]. It might partly explain why COVID-19 patients with stroke displayed a higher mortality in our analysis. From another perspective, infection was a vital risk factor for stroke, especially systemic upper respiratory disease [59, 60]. The spike protein surface unit of SARS-CoV-2 highly binds to human ACE-2 receptor, which affects the normal physiological function of the ACE-2 to degrade ANG II, causing neuronal damage and endothelial cell apoptosis [61]. The dysfunction of endothelial cell, leading to fibrinolysis inhibition and excessive thrombin production [62], plays an important role in the occurrence of thrombotic events [63]. The human immune

system will produce amounts of proinflammatory cytokines such as interleukin (IL)-1 β , tumor necrosis factor-alpha (TNF- α), and IL-6 when SARA-CoV-2 infects the body [64]. This phenomenon referred to as “cytokine storm” results in the degradation of the extracellular matrix (ECM), which is responsible for maintaining the integrity and stability of vascular endothelial cells. Degradation of the ECM contributes to the extravasation of blood components, and leads to hemorrhagic brain injury [65]. Worse still, stroke patients suffering from COVID-19 were more susceptible to undesirable outcomes and greater mortality rates compared with those without [66, 67]. A higher risk of large vessel occlusion and hemorrhagic transformation among ischemic stroke patients with COVID-19, combined with COVID-19 patients being more prone to intracerebral hemorrhage, might contribute to this difference [68–70]. Previous study has shown a past history of cerebrovascular disease might be associated with an increased stroke risk in COVID-19 patients [71]. Thus, we suspected that patients with a history of stroke are more likely to trigger above-mentioned mechanisms, leading to higher mortality of COVID-19 patients with pre-existing stroke. During clinical treatment, more attention should be paid to the possible two-way relationship between stroke and COVID-19 infection.

However, several limitations should be acknowledged. First, our study was limited due to lack of explanation of how stroke was defined in the literature and therefore we could not explore the relationship between different stroke types and COVID-19 mortality. Furthermore, it needs to be acknowledged that most of the selected articles were retrospective observational studies, which were not able to completely explain the casual link between the stroke and COVID-19 mortality, implying that more prospective studies with larger samples are necessary to verify the findings. Lastly, the pooled effects were estimated based on risk factors-adjusted effects, but the adjusted risk factors were not fully consistent across the included researches.

In conclusion, our data indicated that stroke was related to a significantly increased risk for COVID-19 mortality. These findings were supposed to provide a basis for risk scales in the care of patients with COVID-19 in emergency services or intensive care units.

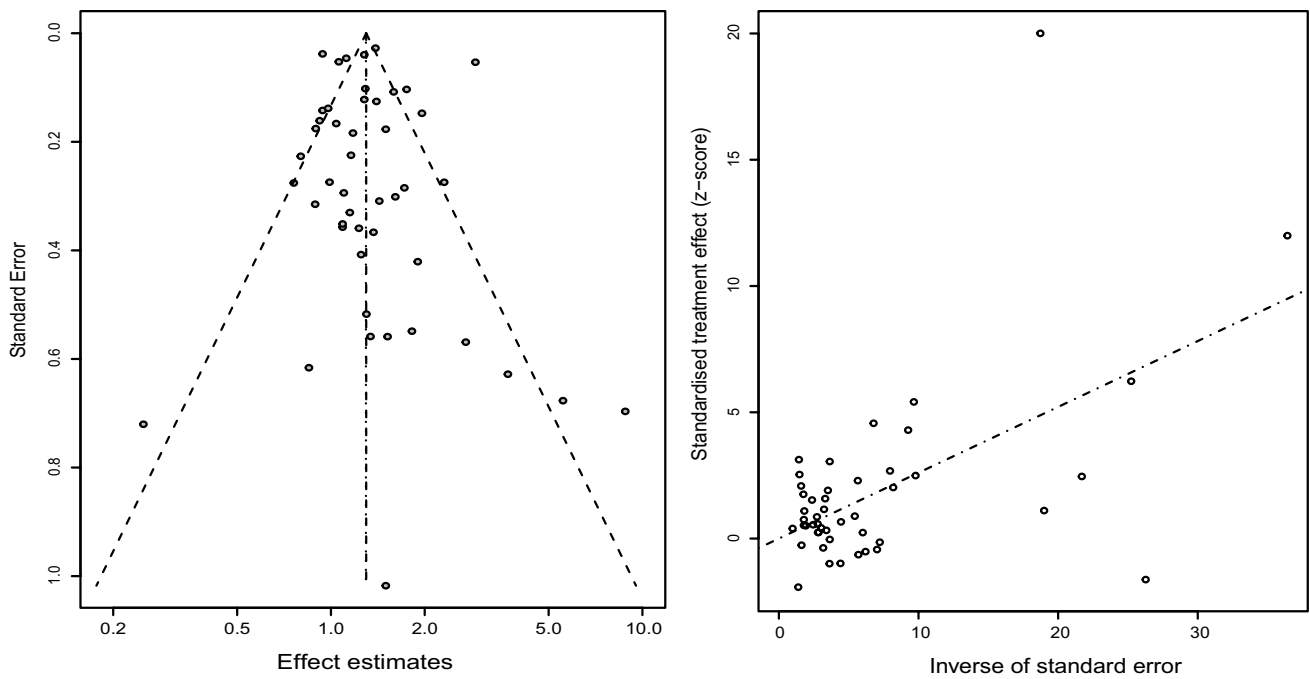


Fig. 4 Publication bias based on funnel plot and radial plot

Acknowledgements We would like to thank Ruiying Zhang, Mengke Hu, Xuan Liang, Wenwei Xiao, Ying Wang, Yang Li, Peihua Zhang, and Jian Wu (all are from Department of Epidemiology, School of Public Health, Zhengzhou University) for their kind help in searching articles and collecting data, and valuable suggestions for data analysis.

Author contribution Yadong Wang, Haiyan Yang, and Guangcai Duan designed the study. Shuwen Li, Jiahao Ren searched articles and extracted the data. Shuwen Li, Hongjie Hou, Jie Xu, and Xueya Han analyzed the data. Shuwen Li wrote and reviewed the manuscript. All the authors approved the final manuscript.

Funding This study was supported by a grant from the National Natural Science Foundation of China (grant number 81973105).

Data availability All data relevant to this study are included in this article.

Declarations

Ethics approval Not applicable.

Conflict of interest The authors declare no competing interests.

Informed consent Not applicable.

References

- Gao Y, Chen Y, Liu M, Niu M, Song Z, Yan M, Tian J (2021) Nervous system diseases are associated with the severity and mortality of patients with COVID-19: a systematic review and meta-analysis. *Epidemiol Infect* 149:e66
- Aggarwal G, Lippi G, Michael Henry B (2020) Cerebrovascular disease is associated with an increased disease severity in patients with coronavirus disease 2019 (COVID-19): a pooled analysis of published literature. *Int J Stroke* 15(4):385–389
- Liang X, Shi L, Wang Y, Xiao W, Duan G, Yang H, Wang Y (2020) The association of hypertension with the severity and mortality of COVID-19 patients: evidence based on adjusted effect estimates. *J Infect* 81(3):e44–e47
- Mesas AE, Cavero-Redondo I, Alvarez-Bueno C, Sarria Cabrera MA, Maffei de Andrade S, Sequi-Dominguez I, Martinez-Vizcaino V (2020) Predictors of in-hospital COVID-19 mortality: a comprehensive systematic review and meta-analysis exploring differences by age, sex and health conditions. *PLoS One* 15(11):e0241742
- Nasiri MJ, Haddadi S, Tahvildari A, Farsi Y, Arbabi M, Hasan-zadeh S, Jamshidi P, Murthi M, Mirsaedi M (2020) COVID-19 Clinical characteristics, and sex-specific risk of mortality: systematic review and meta-analysis. *Front Med (Lausanne)* 7:459
- Xu J, Xiao W, Liang X, Zhang P, Shi L, Wang Y, Wang Y, Yang H (2020) The association of cerebrovascular disease with adverse outcomes in COVID-19 patients: a meta-analysis based on adjusted effect estimates. *J Stroke Cerebrovasc Dis* 29(11):105283
- Yang H, Liang X, Hou H, Xu J, Shi L, Wang Y (2021) The association of dementia with COVID-19 mortality: Evidence based on adjusted effect estimates. *J Infect* 82(5):e6–e10
- Yang H, Xu J, Liang X, Shi L, Wang Y (2021) Autoimmune diseases are independently associated with COVID-19 severity: evidence based on adjusted effect estimates. *J Infect* 82(4):e23–e26
- Muhammad R, Ogunti R, Ahmed B, Munawar M, Donaldson S, Sumon M, Kibreab A, Thomas AN, Mehari A (2022) Clinical characteristics and predictors of mortality in minority patients hospitalized with COVID-19 infection. *J Racial Ethn Health Disparities* 9(1):335–345

10. Lee JH, Hwang YM, Cho Y, Oh IY (2021) Prognostic impact of atrial fibrillation in patients with severe acute respiratory syndrome coronavirus 2 infection. *Medicine (Baltimore)* 100(33):e26993
11. B. Ahlstrom, R. Frithiof, M. Hultstrom, I.M. Larsson, G. Strandberg, M. Lipcsey (2021) The swedish covid-19 intensive care cohort: Risk factors of ICU admission and ICU mortality, *Acta Anaesthesiol Scand*
12. Alguwaihes AM, Al-Sofiani ME, Megdad M, Albader SS, Alsari MH, Alelayan A, Alzahrani SH, Sabico S, Al-Daghri NM, Jammah AA (2020) Diabetes and Covid-19 among hospitalized patients in Saudi Arabia: a single-centre retrospective study. *Cardiovasc Diabetol* 19(1):205
13. Alwafi H, Naser AY, Qanash S, Brinji AS, Ghazawi MA, Alotaibi B, Alghamdi A, Alrhmani A, Fatehaldin R, Alelyani A, Basfar A, AlBarakati A, Alsharif GF, Obaid EF, Shabrawishi M (2021) Predictors of length of hospital stay, mortality, and outcomes among hospitalised COVID-19 patients in Saudi Arabia: a cross-sectional study. *J Multidiscip Healthc* 14:839–852
14. Aoun M, Khalil R, Mahfoud W, Fatfat H, Bou Khalil L, Alameddine R, Afionni N, Ibrahim I, Hassan M, Zarzour H, Jebai A, Khalil NM, Tawil L, Mechref Z, El Imad Z, Chamma F, Khalil A, Zeidan S, El Ghouli B, Dahdah G, Mouawad S, Azar H, Chahine KA, Kallab S, Moawad B, Fawaz A, Homsy J, Tabaja C, Delbani M, Kallab R, Hoballah H, Haykal W, Fares N, Rahal W, Mroueh W, Youssef M, Rizkallah J, Sebaaly Z, Dfouni A, Ghosn N, Nawfal N, Jaoude WA, Bassil N, Maroun T, Bassil N, Beaini C, Haddad B, Moubarak E, Rabah H, Attieh A, Finianos S, Chelala D (2021) Age and multimorbidities as poor prognostic factors for COVID-19 in hemodialysis: a Lebanese national study. *BMC Nephrol* 22(1):73
15. Atkins JL, Masoli JAH, Delgado J, Pilling LC, Kuo CL, Kuchel GA, Melzer D (2020) Preexisting comorbidities predicting COVID-19 and mortality in the UK biobank community cohort. *J Gerontol A Biol Sci Med Sci* 75(11):2224–2230
16. Azarkar Z, Salehiniya H, Kazemi T, Abbaszadeh H (2021) Epidemiological, imaging, laboratory, and clinical characteristics and factors related to mortality in patients with COVID-19: a single-center study. *Osong Public Health Res Perspect* 12(3):169–176
17. Bonnet G, Weizman O, Trimaille A, Pommier T, Cellier J, Geneste L, Panagides V, Marsou W, Denny A, Attou S, Delmotte T, Ribeyrolles S, Chemaly P, Karsenty C, Giordano G, Gautier A, Chaumont C, Guillemot P, Sagnard A, Pastiero J, Ezzouhairi N, Perin B, Zakine C, Levasseur T, Ma I, Chavignier D, Noirclerc N, Darmon A, Mevelec M, Duceau B, Sutter W, Mika D, Fauvel C, Pezel T, Waldmann V, Cohen A, Critical C-FI (2021) Characteristics and outcomes of patients hospitalized for COVID-19 in France: the Critical COVID-19 France (CCF) study. *Arch Cardiovasc Dis* 114(5):352–363
18. D. Bushman, A. Davidson, P. Pathela, S.K. Greene, D. Weiss, V. Reddy, N. Team, J. Latash (2021) Risk Factors for death among hospitalized patients aged 21–64 years diagnosed with COVID-19–New York city, March 13–April 9, 2020, *J Racial Ethn Health Disparities*
19. Caro-Codon J, Rey JR, Buno A, Iniesta AM, Rosillo SO, Castrejon-Castrejon S, Merino C, Marco I, Martinez LA, Garcia-Veas JM, Martin-Polo L, Rodriguez-Sotelo L, Martinez-Cossiani M, Gonzalez-Valle L, Herrero A, Lopez-de-Sa E, Merino JL, Investigators C-C (2021) Characterization of myocardial injury in a cohort of patients with SARS-CoV-2 infection. *Med Clin (Barc)* 157(6):274–280
20. Chai C, Feng X, Lu M, Li S, Chen K, Wang H, Wang W, Tang Z, Cheng G, Wu X, Li Y, Wen Y, Da B, Fan H, Wang L, Ai F, Li W, Peng C, Zhang H, Wen S, Zhang J, Weng Y, Tang Z (2021) One-year mortality and consequences of COVID-19 in cancer patients: a cohort study. *IUBMB Life* 73(10):1244–1256
21. Clift AK, Coupland CAC, Keogh RH, Diaz-Ordaz K, Williamson E, Harrison EM, Hayward A, Hemingway H, Horby P, Mehta N, Bengler J, Khunti K, Spiegelhalter D, Sheikh A, Valabhji J, Lyons RA, Robson J, Semple MG, Kee F, Johnson P, Jebb S, Williams T, Hippisley-Cox J (2020) Living risk prediction algorithm (QCOVID) for risk of hospital admission and mortality from coronavirus 19 in adults: national derivation and validation cohort study. *BMJ* 371:m3731
22. F.R.S.S.S.C.I (2020) consortium, contributors, Severity of COVID-19 and survival in patients with rheumatic and inflammatory diseases: data from the French RMD COVID-19 cohort of 694 patients. *Ann Rheum Dis*
23. Cummins L, Ebyarimpa I, Cheetham N, Tzortziou Brown V, Brennan K, Panovska-Griffiths J (2021) Factors associated with COVID-19 related hospitalisation, critical care admission and mortality using linked primary and secondary care data. *Influenza Other Respir Viruses* 15(5):577–588
24. Efron R, Barda N, Meisel E, Leibowitz A, Fardman A, Rahav G, Klempfner R, Grossman E (2021) Myocardial injury in hospitalized patients with COVID-19 infection-risk factors and outcomes. *PLoS One* 16(2):e0247800
25. Eskandar EN, Altschul DJ, de la Garza Ramos R, Cezayirli P, Unda SR, Benton J, Dardick J, Toma A, Patel N, Malaviya A, Flomenbaum D, Fernandez-Torres J, Lu J, Holland R, Burchi E, Zampolin R, Hsu K, McClelland A, Burns J, Erdfarb A, Malhotra R, Gong M, Semczuk P, Gursky J, Ferastraoraru V, Rosengard J, Antonello D, Labovitz D, Esenwa C, Milstein M, Boro A, Mehler MF (2021) Neurologic syndromes predict higher in-hospital mortality in COVID-19. *Neurology* 96(11):e1527–e1538
26. Galvez-Barron C, Arroyo-Huidobro M, Minarro A, Ananos G, Chamero A, Martin M, Gris C, Avalos JL, Capielo AM, Ventosa E, Tremosa G, Rodriguez-Molinero A, C.-r.g.o. CSAPG (2022) COVID-19: clinical presentation and prognostic factors of severe disease and mortality in the oldest-old population: a cohort study. *Gerontology* 68(1):30–43
27. D. Graziani, J.B. Soriano, C. Del Rio-Bermudez, D. Morena, T. Diaz, M. Castillo, M. Alonso, J. Ancochea, S. Lumbreras, J.L. Izquierdo (2020) Characteristics and prognosis of COVID-19 in patients with COPD, *J Clin Med* 9(10)
28. Hobbs ALV, Turner N, Omer I, Walker MK, Beaulieu RM, Sheikh M, Spires SS, Fiske CT, Dare R, Goorha S, Thapa P, Gnan J, Wright J, Nelson GE (2021) Risk factors for mortality and progression to severe COVID-19 disease in the Southeast region in the United States: a report from the SEUS Study Group. *Infect Control Hosp Epidemiol* 42(12):1464–1472
29. F. Isik, M. Cap, A. Akyuz, O. Bilge, B. Aslan, U. Inci, I. Kaya, E. Tastan, M. Oksul, N.K. Cap, A. Karagoz, E. Baysal (2021) The effect of resistant hypertension on in-hospital mortality in patients hospitalized with COVID-19, *J Hum Hypertens*
30. Kelly JD, Bravata DM, Bent S, Wray CM, Leonard SJ, Boscardin WJ, Myers LJ, Keyhani S (2021) Association of social and behavioral risk factors with mortality among US veterans with COVID-19. *JAMA Netw Open* 4(6):e2113031
31. Kummer BR, Klang E, Stein LK, Dharamoon MS, Jette N (2020) History of stroke is independently associated with in-hospital death in patients with COVID-19. *Stroke* 51(10):3112–3114
32. S.F. Ling, E. Broad, R. Murphy, J.M. Pappachan, S. Pardesi-Newton, M.F. Kong, E.B. Jude (2020) High-dose cholecalciferol booster therapy is associated with a reduced risk of mortality in patients with COVID-19: a cross-sectional multi-centre observational study, *Nutrients* 12(12)
33. Liu J, Zhang S, Dong X, Li Z, Xu Q, Feng H, Cai J, Huang S, Guo J, Zhang L, Chen Y, Zhu W, Du H, Liu Y, Wang T, Chen L, Wen Z, Annane D, Qu J, Chen D (2020) Corticosteroid treatment

- in severe COVID-19 patients with acute respiratory distress syndrome. *J Clin Invest* 130(12):6417–6428
34. Marques M, Correig E, Ibarretxe D, Anoro E, Antonio Arroyo J, Jerico C, Borralló RM, Miret M, Naf S, Pardo A, Perea V, Perez-Bernalte R, Ramirez-Montesinos R, Royuela M, Soler C, Urquiza-Padilla M, Zamora A, Pedro-Botet J, S.-X.r. group, Masana L, Domingo JL (2022) Long-term exposure to PM10 above WHO guidelines exacerbates COVID-19 severity and mortality. *Environ Int* 158:106930
 35. Miller J, Fadel RA, Tang A, Perrotta G, Herc E, Soman S, Nair S, Hanna Z, Zervos MJ, Alangaden G, Brar I, Suleyman G (2021) The impact of sociodemographic factors, comorbidities, and physiologic responses on 30-day mortality in coronavirus disease 2019 (COVID-19) patients in metropolitan detroit. *Clin Infect Dis* 72(11):e704–e710
 36. Nimkar A, Naaraayan A, Hasan A, Pant S, Durdevic M, Suarez CN, Elenius H, Hambarzumyan A, Lakshmi K, Mandel M, Jesmajian S (2020) Incidence and risk factors for acute kidney injury and its effect on mortality in patients hospitalized with COVID-19. *Mayo Clin Proc Innov Qual Outcomes* 4(6):687–695
 37. E. Ouattara, A. Bruandet, A. Borde, X. Lenne, F. Binder-Foucard, M. Le-Bourhis-Zaimi, J. Muller, P. Tran Ba Loc, F. Seguret, S. Tezenas du Montcel, V. Gilleron (2020) Risk factors of mortality among patients hospitalised with COVID-19 in a critical care or hospital care unit: analysis of the French national medicoadministrative database. *BMJ Open Respir Res* 8(1)
 38. Panagides V, Vincent F, Weizman O, Jonveaux M, Trimaille A, Pommier T, Cellier J, Geneste L, Marsou W, Deney A, Attou S, Delmotte T, Fauvel C, Ezzouhairi N, Perin B, Zakine C, Levasseur T, Ma I, Chavignier D, Noirclerc N, Darmon A, Mevelec M, Karsenty C, Duceau B, Sutter W, Mika D, Pezel T, Waldmann V, Ternacle J, Cohen A, Bonnet G, Critical C-FI (2021) History of heart failure in patients with coronavirus disease 2019: Insights from a French registry. *Arch Cardiovasc Dis* 114(5):415–425
 39. Perez-Guzman PN, Daunt A, Mukherjee S, Crook P, Forlano R, Kont MD, Lochen A, Vollmer M, Middleton P, Judge R, Harlow C, Soubieres A, Cooke G, White PJ, Hallett TB, Aylin P, Ferguson N, Hauck K, Thursz MR, Nayagam S (2021) Clinical characteristics and predictors of outcomes of hospitalized patients with coronavirus disease 2019 in a multiethnic London national health service trust: a retrospective cohort study. *Clin Infect Dis* 73(11):e4047–e4057
 40. Puebla Neira DA, Watts A, Seashore J, Duarte A, Nishi SP, Polychronopoulou E, Kuo YF, Baillargeon J, Sharma G (2021) Outcomes of patients with COPD hospitalized for coronavirus disease 2019. *Chronic Obstr Pulm Dis* 8(4):517–527
 41. Reilev M, Kristensen KB, Pottgard A, Lund LC, Hallas J, Ernst MT, Christiansen CF, Sorensen HT, Johansen NB, Brun NC, Voldstedlund M, Stovring H, Thomsen MK, Christensen S, Gubbels S, Krause TG, Molbak K, Thomsen RW (2020) Characteristics and predictors of hospitalization and death in the first 11 122 cases with a positive RT-PCR test for SARS-CoV-2 in Denmark: a nationwide cohort. *Int J Epidemiol* 49(5):1468–1481
 42. Rossi L, Malagoli A, Biagi A, Zanni A, Sticozzi C, Comastri G, Pannone L, Gandolfi S, Vergara P, Villani GQ (2021) Renin-angiotensin system inhibitors and mortality in patients with COVID-19. *Infection* 49(2):287–294
 43. Semenzato L, Botton J, Drouin J, Cuenot F, Dray-Spira R, Weill A, Zureik M (2021) Chronic diseases, health conditions and risk of COVID-19-related hospitalization and in-hospital mortality during the first wave of the epidemic in France: a cohort study of 66 million people. *Lancet Reg Health Eur* 8:100158
 44. Sheshah E, Sabico S, Albakr RM, Sultan AA, Alghamdi KS, Al Madani K, Alotair HA, Al-Daghri NM (2021) Prevalence of diabetes, management and outcomes among Covid-19 adult patients admitted in a specialized tertiary hospital in Riyadh. Saudi Arabia. *Diabetes Res Clin Pract* 172:108538
 45. Vogels Y, Pouwels S, van Oers J, Ramnarain D (2021) Characteristics and risk factors associated with mortality in critically ill patients with COVID-19. *Cureus* 13(4):e14442
 46. B. Wang, B.S. Glicksberg, G.N. Nadkarni, D. Vashishth (2021) Evaluation and management of COVID-19-related severity in people with type 2 diabetes. *BMJ Open Diabetes Res Care* 9(1)
 47. Zagidullin NS, Motloch LJ, Musin TI, Bagmanova ZA, Lakman IA, Tyurin AV, Gumerov RM, Enikeev D, Cai B, Gareeva DF, Davtyan PA, Gareev DA, Talipova HM, Badykov MR, Jirak P, Kopp K, Hoppe UC, Pistulli R, Pavlov VN (2021) J-waves in acute COVID-19: a novel disease characteristic and predictor of mortality? *PLoS One* 16(10):e0257982
 48. Zerbo O, Lewis N, Fireman B, Goddard K, Skarbinski J, Sejvar JJ, Azziz-Baumgartner E, Klein NP (2022) Population-based assessment of risks for severe COVID-19 disease outcomes. *Influenza Other Respir Viruses* 16(1):159–165
 49. Lugon JR, Neves P, Pio-Abreu A, do Nascimento MM, Sesso R, C.-H.-B. Investigators (2022) Evaluation of central venous catheter and other risk factors for mortality in chronic hemodialysis patients with COVID-19 in Brazil. *Int Urol Nephrol* 54(1):193–199
 50. Bandera A, Nobili A, Tettamanti M, Harari S, Bosari S, Mannucci PM, C.-N.W. Group (2022) Clinical factors associated with death in 3044 COVID-19 patients managed in internal medicine wards in Italy: comment. *Intern Emerg Med* 17(1):299–302
 51. Lu Y, Jiao Y, Graham DJ, Wu Y, Wang J, Menis M, Chillarige Y, Wernecke M, Kelman J, Forshee RA, Izurieta HS (2022) Risk factors for COVID-19 deaths among elderly nursing home medicare beneficiaries in the prevaccine period. *J Infect Dis* 225(4):567–577
 52. R. Kvale, K.H. Bonaa, R. Forster, K. Gravingen, P.B. Juliusson, T.A. Myklebust Does a history of cardiovascular disease or cancer affect mortality after SARS-CoV-2 infection?, *Tidsskr Nor Laegeforen* 140(2) (2021).
 53. Gonzalez-Fajardo JA, Ansuategui M, Romero C, Comanges A, Gomez-Arbelaez D, Ibarra G, Garcia-Gutierrez A (2021) Mortality of COVID-19 patients with vascular thrombotic complications. *Med Clin (Engl Ed)* 156(3):112–117
 54. Fan FSY, Yip TCF, Yiu B, Lam B, Au L, Lau AY, Ip B, Soo Y, Leung TW, Li T, Lui G, Wong GLH, Mok V (2021) Neurological diseases and risk of mortality in patients with COVID-19 and SARS: a territory-wide study in Hong Kong. *J Neurol Neurosurg Psychiatry* 92(12):1356–1358
 55. Gupta A, Madhavan MV, Poterucha TJ, DeFilippis EM, Hennessey JA, Redfors B, Eckhardt C, Bickdeli B, Platt J, Nalbandian A, Elias P, Cummings MJ, Nouri SN, Lawlor M, Ranard LS, Li J, Boyle C, Givens R, Brodie D, Krumholz HM, Stone GW, Sethi SS, Burkhoff D, Uriel N, Schwartz A, Leon MB, Kirtane AJ, Wan EY, Parikh SA (2021) Association between antecedent statin use and decreased mortality in hospitalized patients with COVID-19. *Nat Commun* 12(1):1325
 56. Gorelick PB (2019) The global burden of stroke: persistent and disabling. *Lancet Neurol* 18(5):417–418
 57. Ho CH, Lin WC, Hsu YF, Lee IH, Hung YC (2018) One-year risk of pneumonia and mortality in patients with poststroke dysphagia: a nationwide population-based study. *J Stroke Cerebrovasc Dis* 27(5):1311–1317
 58. Singh RJ, Chen S, Ganesh A, Hill MD (2018) Long-term neurological, vascular, and mortality outcomes after stroke. *Int J Stroke* 13(8):787–796
 59. Smeeth L, Thomas SL, Hall AJ, Hubbard R, Farrington P, Valance P (2004) Risk of myocardial infarction and stroke after acute infection or vaccination. *N Engl J Med* 351(25):2611–2618

60. Boehme AK, Luna J, Kulick ER, Kamel H, Elkind MSV (2018) Influenza-like illness as a trigger for ischemic stroke. *Ann Clin Transl Neurol* 5(4):456–463
61. Pranata R, Huang I, Lim MA, Wahjoepramono EJ (2020) Impact of cerebrovascular and cardiovascular diseases on mortality and severity of COVID-19-systematic review, meta-analysis, and meta-regression. *J Stroke Cerebrovasc Dis* 29(8):104949
62. Bibas M, Biava G, Antinori A (2011) HIV-Associated venous thromboembolism. *Mediterr J Hematol Infect Dis* 3(1):e2011030
63. Gupta N, Zhao YY, Evans CE (2019) The stimulation of thrombosis by hypoxia. *Thromb Res* 181:77–83
64. Song P, Li W, Xie J, Hou Y, You C (2020) Cytokine storm induced by SARS-CoV-2. *Clin Chim Acta* 509:280–287
65. P.A. Lapchak, Q. Wu (2011) Vascular dysfunction in brain hemorrhage: translational pathways to developing new treatments from old targets, *J Neurol Neurophysiol* 2011
66. Tan YK, Goh C, Leow AST, Tambyah PA, Ang A, Yap ES, Tu TM, Sharma VK, Yeo LLL, Chan BPL, Tan BYQ (2020) COVID-19 and ischemic stroke: a systematic review and meta-summary of the literature. *J Thromb Thrombolysis* 50(3):587–595
67. Yaghi S, Ishida K, Torres J, Mac Grory B, Raz E, Humbert K, Henninger N, Trivedi T, Lillemoe K, Alam S, Sanger M, Kim S, Scher E, Dehkharghani S, Wachs M, Tanweer O, Volpicelli F, Bosworth B, Lord A, Frontera J (2020) SARS-CoV-2 and stroke in a New York healthcare system. *Stroke* 51(7):2002–2011
68. Ladopoulos T, Zand R, Shahjouei S, Chang JJ, Motte J, Charles James J, Katsanos AH, Kerro A, Farahmand G, Vaghefi Far A, Rahimian N, Ebrahimzadeh SA, Abedi V, Papathanasiou M, Labedi A, Schneider R, Lukas C, Tsiodras S, Tsivgoulis G, Krogius C (2021) COVID-19: neuroimaging features of a pandemic. *J Neuroimaging* 31(2):228–243
69. Nannoni S, de Groot R, Bell S, Markus HS (2021) Stroke in COVID-19: a systematic review and meta-analysis. *Int J Stroke* 16(2):137–149
70. M.S. Dhamoon, A. Thaler, K. Gururangan, A. Kohli, D. Sisniega, D. Wheelwright, C. Mensching, J.T. Fifi, M.G. Fara, N. Jette, E. Cohen, P. Dave, A.C. DiRisio, J. Goldstein, E.M. Loebel, N.A. Mayman, A. Sharma, D.S. Thomas, R.D. Vega Perez, M.R. Weingarten, H.H. Wen, S. Tuhim, L.K. Stein, I. Mount Sinai Stroke, Acute cerebrovascular events with COVID-19 infection, *Stroke* 52(1) (2021) 48–56.
71. Siepmann T, Sedghi A, Simon E, Winzer S, Barlinn J, de With K, Mirow L, Wolz M, Gruenewald T, Schroettner P, von Bonin S, Pallesen LP, Rosengarten B, Schubert J, Lohmann T, Machetanz J, Spieth P, Koch T, Bornstein S, Reichmann H, Puetz V, Barlinn K (2021) Increased risk of acute stroke among patients with severe COVID-19: a multicenter study and meta-analysis. *Eur J Neurol* 28(1):238–247

Publisher's note Springer Nature remains neutral with regard to jurisdictional claims in published maps and institutional affiliations.