



# The Relationship Between Atrial Cardiopathy Biomarkers and Prognosis of Patients With Embolic Stroke of Undetermined Source

Yuye Ning, Meng Wei, Wenfeng Song and Guogang Luo\*

Stroke Centre and Department of Neurology, The First Affiliated Hospital of Xi'an Jiaotong University, Xi'an, China

**Objective:** To compare the proportion of atrial cardiopathy in patients with embolic stroke of undetermined source (ESUS) and other non-cardiac strokes, and to evaluate the prognostic value of atrial cardiopathy biomarkers in patients with ESUS.

**Methods:** This retrospective study enrolled patients with ischemic stroke from January 2018 to April 2020 in a single stroke center, and compared the proportion of atrial cardiopathy in (1) ESUS group, (2) large artery atherosclerosis (LAA) group, and (3) small-vessel occlusion (SVO) group. Then, it compared the baseline characteristics between ESUS patients with atrial cardiopathy and cardioembolism (CE) group. In addition, the relationship was compared between the biomarkers of atrial cardiopathy and prognosis in patients with ESUS.

**Results:** In total, 316 patients with ischemic stroke were included that included 105 (33.23%) ESUS, 84 (26.58%) LAA, 73 (23.10%) SVO, and 54 (17.09%) CE. Among these patients, patients with ESUS were younger, and had lower triglyceride, lower low-density lipoprotein than non-ESUS group. The proportion of atrial cardiopathy in ESUS group was higher than LAA group or SVO group (42.86 vs. 17.86 vs. 8.22%,  $p < 0.001$ ). Compared with non-atrial cardiopathy group, patients with atrial cardiopathy were older, had lower EF value, larger left ventricular diameter, and longer PR interval. Among 105 patients with ESUS, 11 (10.78%) cases died, 32 (31.37%) cases had poor functional outcome (mRS  $> 2$ ). In the multivariable model, the risk factor associated with the death risk of patients with ESUS was N-terminal pro-B-type natriuretic peptide (NT-proBNP)  $> 250$  pg/ml [ $p = 0.025$ , hazard ratio (HR) = 4.626, 95% CI: 1.212–17.652] after a 1-year follow-up.

**Conclusions:** Atrial cardiopathy is more common in patients with ESUS, and the characteristics of ESUS patients with atrial cardiopathy are similar to those in patients with CE. NT-proBNP  $> 250$  pg/ml is related to the risk of death in patients with ESUS.

**Keywords:** ESUS, atrial cardiopathy, biomarkers, prognosis, prevention

## INTRODUCTION

Nearly 30% ischemic strokes (ISs) have no identifiable causes even after standard diagnostic evaluation, are defined as cryptogenic stroke (CS) (1). A study suggested that most of patients with CS are diagnosed as embolism (2). Therefore, the new term of stroke subclassification: the embolic stroke of undetermined source (ESUS) has been proposed in 2014 to specify CS (3).

## OPEN ACCESS

### Edited by:

Michelle Meyer,  
University of North Carolina at Chapel  
Hill, United States

### Reviewed by:

Benjamin Y.Q. Tan,  
National University  
Hospital, Singapore  
Simona Lattanzi,  
Marche Polytechnic University, Italy

### \*Correspondence:

Guogang Luo  
lguogang@163.com

### Specialty section:

This article was submitted to  
Cardiovascular Epidemiology and  
Prevention,  
a section of the journal  
Frontiers in Cardiovascular Medicine

Received: 05 December 2021

Accepted: 08 February 2022

Published: 11 March 2022

### Citation:

Ning Y, Wei M, Song W and Luo G  
(2022) The Relationship Between  
Atrial Cardiopathy Biomarkers and  
Prognosis of Patients With Embolic  
Stroke of Undetermined Source.  
*Front. Cardiovasc. Med.* 9:829361.  
doi: 10.3389/fcvm.2022.829361

Accumulating data suggested that atrial cardiopathy, a pathophysiological concept to describe the abnormal atrial substrate or functions, such as atrial fibrosis, impaired myocyte function, and chamber dilation (4–8), possibly form embolic nidus even without atrial fibrillation (AF). There is an association between atrial cardiopathy biomarkers and occurrence of stroke, such as increased p-wave terminal force V1 (PTFV1) (9) on the electrocardiography (ECG), left atrial enlargement (10, 11), increased N-terminal pro-B-type natriuretic peptide (NT-proBNP) (12) in serum. Therefore, they assumed that atrial cardiopathy, indicating abnormal atrial structure and function, might increase stroke risk and this happens even before AF occurs.

Besides, in-depth study on the correlation between biomarker and increased stroke risk is needed. There are limited reports to evaluate and expound the proportion of atrial cardiopathy in ESUS compared with non-cardiac stroke. There are even less studies on the association between atrial cardiopathy biomarkers with the prognosis of patients with ESUS. Therefore, we aimed to examine the association between these biomarkers and patients with ESUS.

## METHODS

### Study Population

This study enrolled patients with IS retrospectively from January 2018 to April 2020 in Stroke Centre and Department of Neurology, the First Affiliated Hospital of Xi'an Jiaotong University. Patients with the conformation of new stroke onset through diffusion weighted image (DWI) and adequate clinical evaluation as follows were included: brain CT angiography (CTA) and/or magnetic resonance angiography (MRA) and/or digital subtraction angiography (DSA), ultrasound of cervical vessels, 12-lead ECG, echocardiography, dynamic ECG, and NT-proBNP. We excluded patients who have multiple etiologies or have other definite etiologies, such as moyamoya disease, arterial dissection, and arteritis.

According to TOAST classification criteria, patients were divided into large-artery atherosclerosis (LAA) group, small-vessel occlusion (SVO) group, cardioembolism (CE) group, and ESUS group. The diagnosis criteria for ESUS include the following steps: (1) non-lacunar IS by MRI or CT; (2) exclusion of  $\geq 50\%$  luminal stenosis in extracranial or intracranial arteries using vascular imaging; (3) exclusion of cardioembolic causes; and (4) exclusion of other uncommonly determined causes of stroke (arteritis, dissection, migraine, and drug misuse). This research was approved by the Ethics Committee of the First Affiliated Hospital of Xi'an Jiaotong University (XJTU1AF2020LSK-066), Shaanxi, China.

### Clinical Information

Baseline demographic information were abstracted from electronic medical records, such as sex, age, and medical history (hypertension, diabetes, coronary heart disease, hemorrhagic, and IS). The severity of ESUS was defined with the National Institutes of Health Stroke Scale (NIHSS). Brain MRI was reviewed for each patient to examine a degree of white matter

hyperintensities based on Fazekas scale. Cardiac evaluation was reviewed for all patients, such as ECG, transthoracic echocardiograms, and 24-h ambulatory ECG monitoring. Left ventricular end diastolic and systolic diameter, left atrial diameter (LAD), and left ejection fraction were obtained from reports. LAD was classified to mild, moderate, and severe, according to standard criteria (13). PFTV1 and PR interval were measured on the first ECG record after admission. PFTV1 was calculated by multiplying the duration (ms) of the terminal negative component of P-wave by its amplitude ( $\mu\text{V}$ ) in lead V1 on the 12-lead ECG recorded by manual calculation. NT-proBNP was obtained from first electronic records. Atrial cardiopathy was defined as PTFV1  $>5,000 \mu\text{V}\cdot\text{ms}$  or NT-proBNP  $>250 \text{ pg/ml}$  or severe left atrial enlargement (women  $\geq 4.7 \text{ cm}$  and men  $\geq 5.2 \text{ cm}$ ) (13, 14).

### Outcome

The incidence of endpoint events within 1 year after discharge. The basic condition and prognosis of patients were followed-up through telephone. In this study, the primary outcome was the mortality rate of patients with ESUS after discharge. Secondary endpoint measures by the modified Rankin Scale (mRS), the score over 2 was defined as poor functional outcome in patients with ESUS. Researcher who called for follow-up and measured this outcome were blinded to the groups of patients.

### Statistical Analysis

Data were expressed as means  $\pm$  SD or median (interquartile distance) for continuous variable and as percentages for categorical variables performed with. The between-group comparisons of mean were performed using one-way ANOVA. Non-normal data were evaluated by non-parametric Kruskal–Wallis test. Between-group comparisons of categorical variables were evaluated by the  $\chi^2$  or Fisher exact test. Survival analysis chart was performed with GraphPad Prism software version 8.0.1. Kaplan–Meier curve, cox regression, and binary logistic regression were used to investigate the independent risk factor of the poor prognosis of patients with ESUS.

## RESULTS

Cases before 2018 were excluded for the lack of electronic medical records. In total, this study collected 1,220 cases of IS from January 2018 to the April 2020, and 316 cases met the criteria of admission and exclusion, among which 105 cases met the criteria for ESUS diagnosis. According to TOAST classification, LAA 84 cases, SVO 73 cases, and CE 54 cases, LAA and SVO compose of non-ESUS group.

### Baseline Characteristics

The ESUS group was younger than the non-ESUS group ( $59.35 \pm 15.01$  vs.  $60.71 \pm 12.05$ ,  $p = 0.033$ ), and NIHSS score was higher than the non-ESUS group [ $3.00$  ( $2.00, 8.00$ ) vs.  $1.00$  ( $1.00, 4.50$ ),  $p = 0.005$ ]. Compared with the non-ESUS group, the ESUS group had lower hemoglobin content ( $135.72 \pm 2.10$  vs.  $144.61 \pm 1.26$ ,  $p < 0.001$ ), higher D-dimer content [ $0.88$  ( $0.44, 1.87$ ) vs.  $0.50$  ( $0.36, 0.79$ ),  $p < 0.001$ ], lower triglyceride [ $1.23$  ( $0.87, 1.65$ ) vs.

**TABLE 1** | Baseline characteristics comparison between ESUS and non-ESUS groups.

	ESUS group (n = 105)	Non-ESUS group (n = 157)	P-value
Age, y, mean (SD)	59.35 (15.01)	60.71 (12.05)	0.033
Sex, %, male	65.71	73.25	0.191
Hypertension, %	60.00	59.87	0.984
Diabetes mellitus, %	21.90	31.21	0.098
CAD, %	15.24	9.55	0.163
Prior stroke, %	13.33	16.56	0.477
Smoke, %	42.86	47.77	0.434
NIHSS, M(Q)	3.00 (2.00, 8.00)	2.00 (1.00, 4.50)	0.005
TC, mean (SD)	3.82 (0.88)	4.06 (0.92)	0.044
TG, M (Q)	1.23 (0.87, 1.65)	1.35 (1.00, 1.81)	0.041
HDL, M (Q)	0.96 (0.77, 1.15)	0.95 (0.82, 1.11)	0.899
LDL, mean (SD)	2.20 (0.73)	2.49 (0.76)	0.003
Hb, mean (SD)	135.72 (2.10)	144.61 (1.26)	<0.001
D-dimer, M (Q)	0.88 (0.44, 1.87)	0.50 (0.36, 0.79)	<0.001
EF, M (Q)	68.00 (62.50, 72.00)	69.00 (65.00, 72.00)	0.081
LVDD, M (Q)	49.00 (46.00, 52.00)	48.00 (46.00, 51.00)	0.167
LVDS, M (Q)	30.00 (27.00, 33.00)	29.00 (27.00, 31.00)	0.053
PR interval, M (Q)	158.00 (142.00, 171.00)	160.00 (146.00, 178.00)	0.185
Single APB, M (Q)	16.00 (1.00, 92.5)	17.50 (5.00, 61.00)	0.567
Coupling APB, M (Q)	0.00 (0.00, 5.5)	0.00 (0.00, 3.00)	0.660

IS, ischemic stroke; ESUS, embolic strokes of undetermined source; CAD, coronary heart disease; NIHSS, the national institutes of health stroke scale; TC, total cholesterol; HDL, high-density lipoprotein cholesterol; Hb, hemoglobin; EF, ejection fraction; LVDD, left ventricular end diastolic diameter; LVDS, left ventricular end diastolic systolic diameter; APB, atrial premature beat.

1.35 (1.00, 1.81),  $p = 0.041$ ], lower low-density lipoprotein ( $2.20 \pm 0.73$  vs.  $2.49 \pm 0.76$ ,  $p = 0.003$ ), and lower total cholesterol content ( $3.82 \pm 0.88$  vs.  $4.06 \pm 0.92$ ,  $p = 0.044$ ). There was no significant difference in gender, other previous medical history, laboratory examination, echocardiography, and ECG parameters between the two groups (Table 1).

Atrial cardiopathy accounted for 42.86% in ESUS, which was more common than the LAA group or SVO group (42.86 vs. 17.86 vs. 8.22%,  $p < 0.001$ ). Although three markers were selected as the diagnostic criteria of atrial cardiopathy, no one in three groups met the criteria of severe left atrial enlargement established by American Ultrasound Association (Table 2; Figure 1) (13).

We compared the baseline characteristics of ESUS patients with and without atrial cardiopathy. Results showed that ESUS patients with atrial cardiopathy are older ( $65.28 \pm 13.17$  vs.  $56.00 \pm 14.54$ ,  $p = 0.001$ ), have more hypertension (71.11 vs. 1.67%,  $p = 0.044$ ), have lower hemoglobin ( $127.72 \pm 21.27$  vs.  $141.94 \pm 19.65$ ,  $p = 0.001$ ), and higher D-dimer [ $1.02$  (0.59, 2.30) vs.  $0.70$  (0.39, 1.33),  $p = 0.015$ ], but also had lower ejection fraction [ $66.00$

(60.50, 70.00) vs.  $69.00$  (65.00, 42.00),  $p = 0.026$ ] and larger left ventricular end diastolic ( $50.16 \pm 5.48$  vs.  $48.11 \pm 3.49$ ,  $p = 0.004$ ) or systolic diameter [ $31.00$  (29.00, 34.50) vs.  $30.00$  (27.00, 32.00),  $p = 0.008$ ], in addition, had longer PR interval ( $165.24 \pm 30.95$  vs.  $155.93 \pm 19.33$ ,  $p = 0.009$ ), more single [ $65.00$  (5.50, 520.5) vs.  $9.50$  (0.00, 40.25),  $p = 0.001$ ], and paired atrial premature beats [ $2.00$  (0.00, 13.50) vs.  $0.00$  (0.00, 2.75),  $p = 0.011$ ] and atrial tachycardia [ $0.00$  (0.00, 3.50) vs.  $0.00$  (0.00, 1.00),  $p = 0.013$ ]. The baseline risk factors, such as diabetes, hypertension, prior stroke, coronary artery disease, and smoking, were similar between two groups (Table 3).

Patients with atrial cardiopathy in ESUS had more hypertension (71.11 vs. 48.15,  $p = 0.021$ ), lower hemoglobin ( $127.72 \pm 21.27$  vs.  $137.35 \pm 15.99$ ,  $p = 0.017$ ) than those in the CE group. The baseline risk factors between the two groups were basically similar (Table 4).

## Atrial Cardiopathy Biomarkers and Prognosis

Among 105 patients with ESUS, 3 patients were lost to follow-up and 11 patients died accounting for 10.8% (11/102), and there are 32 patients with poor functional outcome (mRS >2) accounting for 31.4% of patients with ESUS after follow-up.

We compared the prognosis of ESUS patients with atrial cardiopathy and patients without cardiopathy and evaluate the various risk factors. In the Kaplan–Meier analysis, significant statistical differences were found in different group and NT-proBNP >250 pg/ml. These results showed that the risk of death of ESUS patients with atrial cardiopathy was higher than ESUS patients without atrial cardiopathy (Figure 2). The death risk of ESUS patients with NT-proBNP >250 pg/ml was higher than ESUS patients without NT-proBNP >250 pg/ml ( $p = 0.004$ ) (Figure 2). However, age, prior medical history, whether PTFV1 >5,000  $\mu\text{V}\cdot\text{ms}$  have no concern with the death risk of death in patients with ESUS (Table 5). Cox regression that included variables significant, the risk factor associated with death was NT-proBNP >250 pg/ml ( $p = 0.025$ , HR = 4.626, 95% CI: 1.212–17.652). PTFV1 >5,000  $\mu\text{V}\cdot\text{ms}$ , age, sex, and prior medical history were not associated with the death risk (Table 6). In addition, there is no significant correlation between these risk factors above and total poor functional outcome (mRS >2), such as age, sex, past medical history, and two markers in binary logistic regression analysis (Table 7).

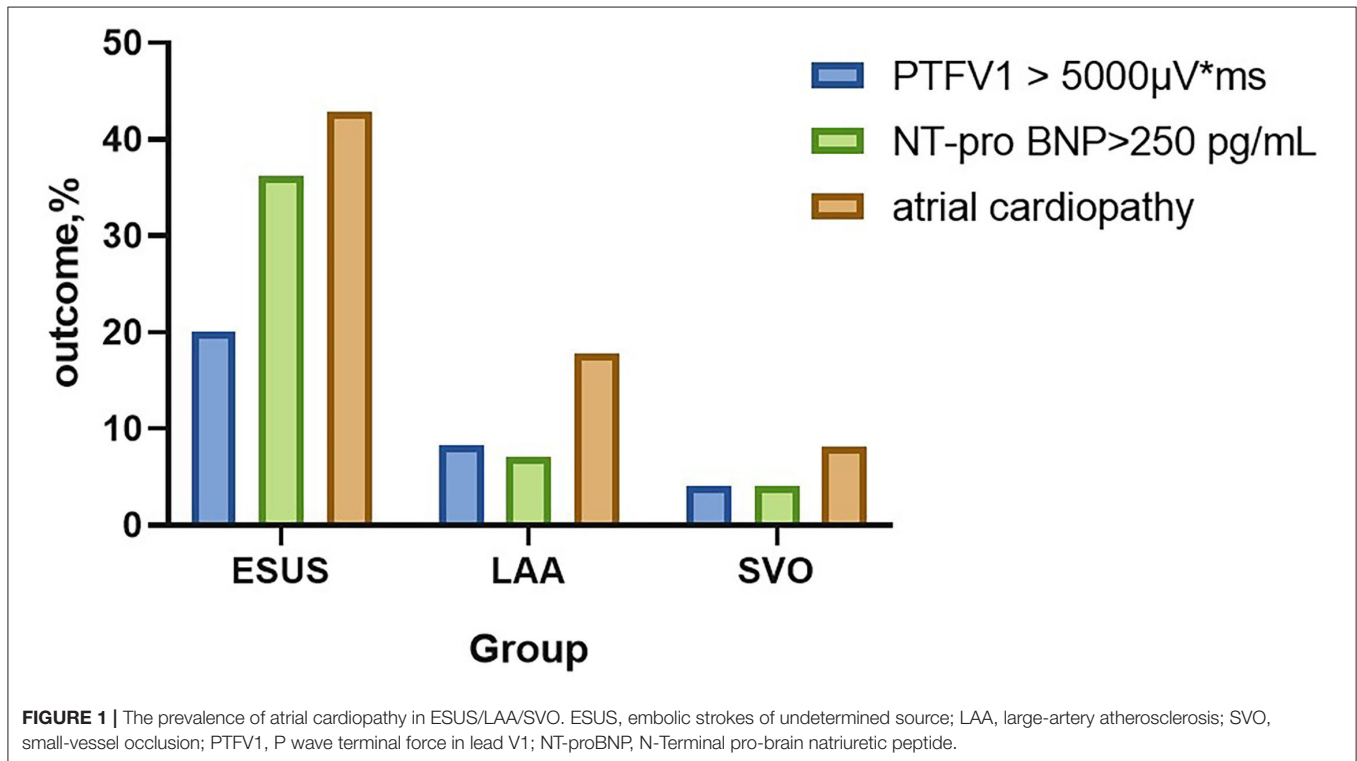
## DISCUSSION

The key to prevent IS to identify its etiology. TOAST classification has been widely used in clinical practice, and it is helpful for the treatment of subtypes, however, this general classification yielded difficulties in the secondary prevention of CS. The definition of CS includes patients with multiple potential causes and patients who have not been completely evaluated. For a long time, because of the complex causes of CS, to formulate their secondary prevention and treatment strategies is very challenging for clinicians. Although the diagnostic criteria

**TABLE 2** | The prevalence of atrial cardiopathy in ESUS/LAA/SVO.

	ESUS (n = 105)	LAA (n = 84)	SVO (n = 73)	P-value
PTFV1 >5,000 $\mu\text{V} \cdot \text{ms}$ , % (n)	20.00 (21)	8.30 (7)	4.11 (3)	0.003
NT-proBNP >250 pg/mL, % (n)	36.19 (38)	7.14 (6)	4.11 (3)	<0.001
Atrial cardiopathy, % (n)	42.86 (45)	17.86 (15)	8.22 (6)	<0.001

ESUS, embolic strokes of undetermined source; LAA, large-artery atherosclerosis; SVO, small-vessel occlusion; PTFV1, P wave terminal force in lead V1; NT-proBNP, N-Terminal pro-brain natriuretic peptide.

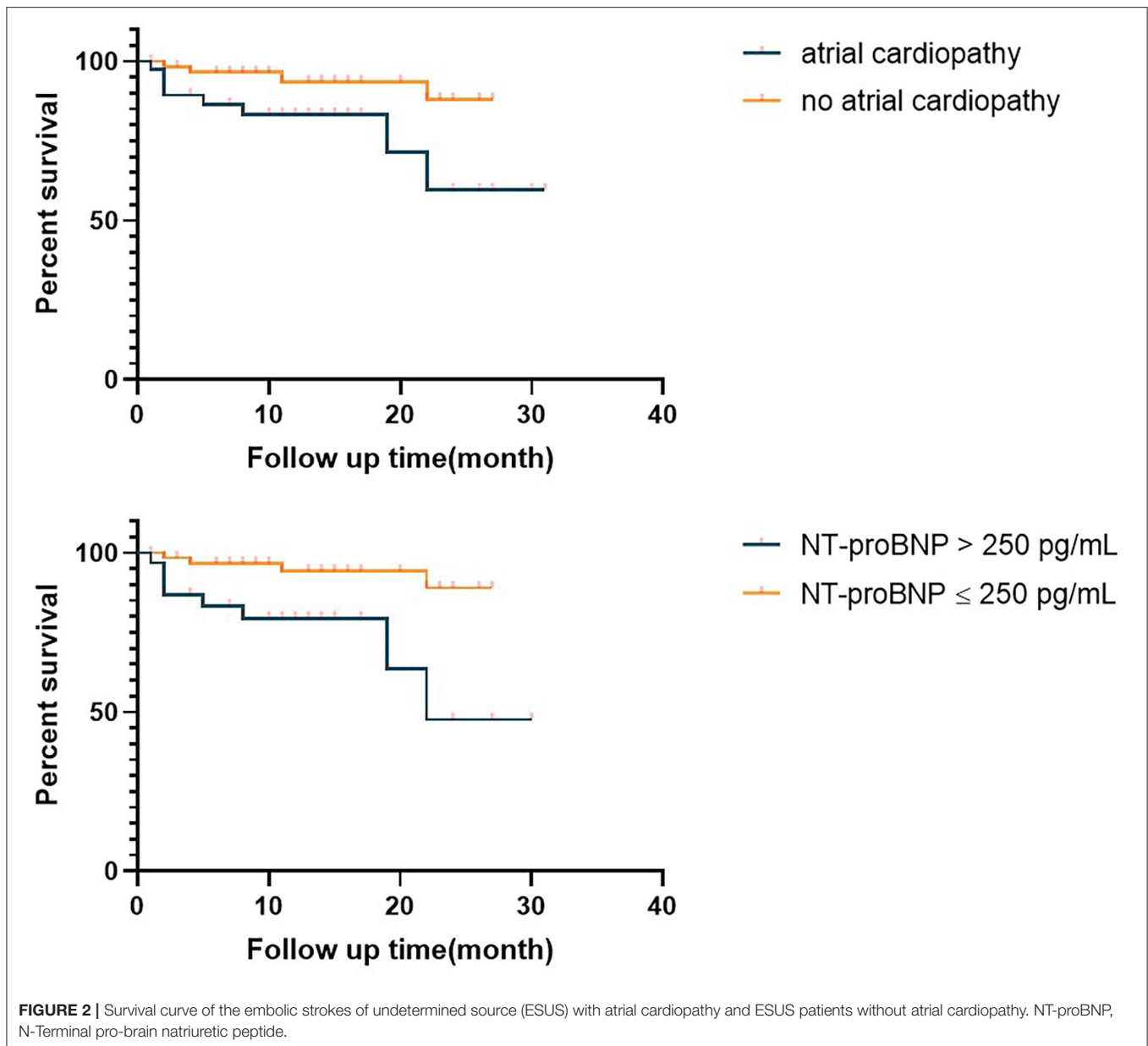


of ESUS are more specific than CS, many examinations are not routine clinical examinations (such as, 24-h ECG), so the proportion of patients with ESUS in different countries is quite different. The limitation of screening methods in studies may lead to a relatively wide proportion of patients with ESUS, and about 17% of IS patients meet the ESUS standard (15). However, this may still underestimate the real world proportion, because of the high demand of diagnostic standard and examinations. Eventually a certain number of patients have not been evaluated completely in many studies to date.

In this study, patients with IS were required to have a comprehensive assessment, that was, all patients with IS were required to have the necessary examination results for diagnosing ESUS, only 25.82% of patients with IS had made a comprehensive assessment among 1,220 IS patients with new cerebral infarction focus. Patients with ESUS accounted for 8.6% in patients with ischemic stroke, far less than the reported frequency averaging 17% (15). Note that there are larger number of ischemic stroke patients with incomplete

diagnostic evaluation, especially ECG Holter. On the whole, this study showed that there were some problems in patients with IS, such as insufficient etiological assessment and meticulous classification. In particular, only about one-fourth patients with IS had dynamic ECG, which can effectively decrease the detection rate of occult AF.

Left atrial enlargement was associated with stroke recurrence (16, 17), but left atrial size is often measured from echocardiography. However, it cannot fully represent the 3-dimensional size of left atria. Left atrial volume index (LAVi) was more associated with the risk of cardiovascular events (11), especially in patients with ESUS (18). In addition, the research showed that increased LAVi was associated with increased ESUS probability (19). LAVi may be a better biomarker of atrial cardiopathy. However, most patients did not have complete data of height and weight. Therefore, this study measured left atria by 2-dimensional transthoracic echocardiography without index. Disappointingly, none of patients with ESUS met the criteria of severe LAE given by the American Society of Echocardiography. Previous studies had shown that about 63% of patients with CS



had atrial cardiopathy (PTFV1 >5,000  $\mu\text{V}\cdot\text{ms}$ , or NT-proBNP >250 pg/ml, or severe LAE) (20), or 45% of patients with ESUS had atrial cardiopathy (defined as: female left atrium >38 mm, male left atrium >40 mm, or supraventricular premature beats) (21), or atrial cardiopathy in patients with ESUS accounted for 26.6% (22) (defined as: PTFV1 >5,000  $\mu\text{V}\cdot\text{ms}$ , or severe LAE). This study showed that the proportion of atrial cardiopathy in ESUS was 42.86%, which was higher than other non-CE IS (42.86 vs. 17.86 vs. 8.22%). NT-proBNP >250 pg/ml was the most common marker of atrial cardiopathy in the ESUS group. Under different standards, all studies showed that atrial cardiopathy accounted for a certain proportion of patients with ESUS, which was higher than other non-CE IS, and it also confirmed that atrial cardiopathy was one of the potential pathogenesis of ESUS.

It could be seen that ESUS patients with atrial cardiopathy had clinical characteristics similar to those of CE, and were different from those of patients without atrial cardiopathy, which confirmed that these patients may have atrial substrate dysfunction. Except for the above three markers, there was no significant difference in PR interval between ESUS and non-ESUS groups, with only 4 cases of paroxysmal supraventricular tachycardia. Since other markers were not routinely examined, the results of most patients were missing (such as, troponin T and cardiac MRI), and relatively accurate results could not be obtained.

Embolic stroke of undetermined source patients with atrial cardiopathy have a higher risk of death compared to ESUS patients without atrial cardiopathy. Among two biomarkers of



**TABLE 3 |** Baseline characteristics comparison between atrial cardiopathy and no atrial cardiopathy in patients with ESUS.

	Atrial cardiopathy (n = 45)	No atrial cardiopathy (n = 60)	P-value
Age, y, mean (SD)	65.28 ± 13.17	56.00 ± 14.54	0.001
Sex, %, male	71.11	61.67	0.313
Hypertension, %	71.11	51.67	0.044
Diabetes mellitus, %	26.67	18.33	0.307
CAD, %	22.22	10.00	0.085
Prior stroke, %	17.78	10.00	0.246
Smoke, %	46.67	40.00	0.495
NIHSS, M(Q)	4.00 (1.00, 8.50)	3.00 (2.00, 8.00)	0.995
Fazekas, M(Q)	1.00 (1.00, 3.00)	1.00 (0.00, 3.00)	0.562
TC, mean (SD)	3.67 ± 0.90	3.89 ± 0.82	0.120
TG, M (Q)	1.09 (0.86, 1.39)	1.34 (0.87, 1.76)	0.100
HDL, M (Q)	1.02 (0.87, 1.27)	0.91 (0.75, 1.11)	0.157
LDL, mean (SD)	2.05 ± 0.79	2.24 ± 2.22	0.083
Hb, mean (SD)	127.72 ± 21.27	141.94 ± 19.65	0.001
D-dimer, M (Q)	1.02 (0.59, 2.30)	0.70 (0.39, 1.33)	0.015
EF, M (Q)	66.00 (60.50, 70.00)	69.00 (65.00, 42.00)	0.026
LVDD, mean (SD)	50.16 ± 5.48	48.11 ± 3.49	0.004
LVDS, M (Q)	31.00 (29.00, 34.50)	30.00 (27.00,32.00)	0.008
PR interval, mean (SD)	165.24 ± 30.95	155.93 ± 19.33	0.009
Single APB, M (Q)	65.00 (5.50, 520.5)	9.50 (0.00, 40.25)	0.001
Coupling APB, M (Q)	2.00 (0.00, 13.50)	0.00 (0.00, 2.75)	0.011
Atrial tachycardia, M (Q)	0.00 (0.00, 3.50)	0.00 (0.00, 1.00)	0.013

IS, ischemic stroke; ESUS, embolic strokes of undetermined source; CAD, coronary heart disease; NIHSS, the national institutes of health stroke scale; TC, total cholesterol; HDL, high-density lipoprotein cholesterol; Hb, hemoglobin; EF, ejection fraction; LVDD, left ventricular end diastolic diameter; LVDS, left ventricular end diastolic systolic diameter; APB, atrial premature beat.

atrial cardiopathy, NT-proBNP >250 pg/ml associated with the death risk of patients compared with PTFV1 >5,000 μV·ms. Note that no one have severe left atrial enlargement in this study. Therefore, this study only focused on two biomarkers (NT-proBNP and PTFV1). BNP is mainly synthesized and secreted from ventricular myocytes and plays an important role to regulate volume and pressure. Under abnormal conditions, BNP can transform to proBNP which can be split into NT-proBNP, widely used in the clinical diagnosis and prognostic assessment of heart failure. This biomarker is also a signal for adverse cardiac events and non-cardiovascular causes mortality. Multiple evidence suggested that NT-proBNP had prognostic values in patients with cardiovascular diseases (23) and it was the strongest predictor for sudden cardiac death (24). Furthermore, NT-proBNP was independently associated with stroke and AF occurrence (25), and was considered as a biomarker of atrial cardiopathy (8). It may be associated with the prognosis of patients with ESUS even slightly higher than the normal value. In addition, the rise of left ventricular filling pressure can rise the

**TABLE 4 |** Baseline characteristics comparison between atrial cardiopathy and cardioembolism (CE) group.

	Atrial cardiopathy (n = 45)	CE group (n = 54)	P-value
Age, y, mean (SD)	65.28 ± 13.17	65.76 ± 16.05	0.868
Sex, %, male	32/13	37/17	0.780
Hypertension, %	71.11	48.15	0.021
Diabetes mellitus, %	26.67	20.37	0.460
CAD, %	22.22	24.07	0.828
Prior stroke, %	17.78	14.81	0.690
Smoke, %	46.67	35.19	0.246
NIHSS, M (Q)	4.00 (1.00, 8.50)	4.00 (2.00, 12.5)	0.251
TC, M (Q)	3.79 (3.02, 4.47)	3.33 (3.03, 4.18)	0.276
TG, M (Q)	1.09 (0.86, 1.39)	1.04 (0.76, 1.61)	0.936
HDL, mean (SD)	1.06 ± 0.28	0.98 ± 0.28	0.494
LDL, M (Q)	2.01 (1.58, 2.56)	1.93 (1.52, 6.40)	0.759
Hb, mean (SD)	127.72 ± 21.27	137.35 ± 15.99	0.017
D-dimer, M (Q)	1.02 (0.59, 2.30)	0.98 (0.76, 1.61)	0.424
EF, M (Q)	66.00 (60.50, 70.00)	65.00 (57.75, 69.25)	0.545
LVDD, M (Q)	50.00 (46.50, 53.00)	48.00 (44.75, 52.00)	0.169
LVDS, M (Q)	31.00 (29.00, 34.50)	31.00 (27.00, 35.25)	0.671
PR interval, M (Q)	162.00 (141.00, 184.00)	173.00 (143.50, 220.5)	0.142

IS, ischemic stroke; ESUS, embolic strokes of undetermined source; CAD, coronary heart disease; NIHSS, the national institutes of health stroke scale; TC, total cholesterol; HDL, high-density lipoprotein cholesterol; Hb, hemoglobin; EF, ejection fraction; LVDD, left ventricular end diastolic diameter; LVDS, left ventricular end diastolic systolic diameter.

**TABLE 5 |** Significant statistical differences were found in Kaplan–Meier analysis.

	Chi-square	P-value
Age >60	3.076	0.079
Sex	0.001	0.978
Hypertension	2.393	0.122
Diabetes mellitus	2.213	0.137
CAD	0.681	0.409
Smoke, %	0.521	0.470
NT-proBNP >250 pg/mL	4.835	0.004
PTFV1 >5,000 μV·ms	0.443	0.505
Atrial cardiopathy group	4.477	0.034

CAD, coronary heart disease; NT-pro BNP, N-terminal pro-B-type natriuretic peptide; PTFV1, p-wave terminal force V1.

left atrial pressure, then the left atrial myocardium is stretched resulting in increased PTFV1. PTFV1 is a biomarker of atrial enlargement, associated with atrial fibrosis, filling pressure rises, and atrial volume rises. It is suggested that PTFV1 is associated with stroke and AF occurrence (9, 26). A recent study found an association between increased PTFV1 with ESUS (27). Another research showed that increased PTFV1 was associated with occult

**TABLE 6** | Significant statistical differences were found in the Cox regression model.

	P-value	HR	Confidence interval
Age	0.166	1.042	(0.983, 1.105)
Sex (male)	0.560	1.644	(0.309, 8.742)
Hypertension	0.786	1.255	(0.244, 6.462)
Diabetes mellitus	0.111	3.038	(0.774, 11.930)
CAD	0.324	2.158	(0.467, 9.969)
Smoking	0.796	0.816	(0.175, 3.809)
NT-proBNP >250 pg/mL	0.025	4.626	(1.212, 17.652)
PTFV1 >5,000 $\mu$ V-ms	0.650	0.716	(0.170, 3.023)

CAD, coronary heart disease; NT-pro BNP, N-terminal pro-B-type natriuretic peptide; PTFV1, p-wave terminal force V1.

**TABLE 7** | Significant statistical differences were found in binary logistic regression analysis.

	P-value	HR	Confidence interval
Age	0.069	1.035	(0.997, 1.075)
Sex (male)	0.871	0.908	(0.281, 2.936)
Hypertension	0.943	0.961	(0.326, 2.829)
Diabetes mellitus	0.491	1.495	(0.476, 4.693)
CAD	0.918	0.932	(0.247, 3.521)
Smoking	0.089	0.354	(0.107, 1.172)
NT-proBNP >250 pg/mL	0.122	2.238	(0.807, 6.207)
PTFV1 >5,000 $\mu$ V-ms	0.418	0.597	(0.171, 2.080)

CAD, coronary heart disease; NT-pro BNP, N-terminal pro-B-type natriuretic peptide; PTFV1, p-wave terminal force V1; mRS, the modified Rankin Scale.

AF detection but not with recurrent IS (28). This result may be influenced by the fact that all detected patients with AF accepted anticoagulation therapy. The prospective studies with large sample size focused on the association between increased PTFV1 and recurrent IS are needed. Atrial cardiopathy was defined by PTFV1 >5,000  $\mu$ V-ms or NT-proBNP >250 pg/ml or severe left atrial enlargement based on the association of these biomarkers and stroke risk. Recently, PTFV1 was considered as a more reliable marker associated with stroke (20). In our study, in comparison with PTFV1, NT-proBNP is more relative to the death risk of patients with ESUS. In addition, there were multiple atrial cardiopathy biomarkers, such as prolongation of the PR interval (29), prolonged P-wave durations (30), paroxysmal supraventricular tachycardia (PSVT) (31), and cardiac troponin (cTnT) (25), may be associated with the prognosis of ESUS patients, and more studies are needed to verify their relationship.

The secondary prophylaxis of ESUS is still unclear. Given that lesions mostly originate from embolism in patients with ESUS who may be beneficial from anticoagulation therapy rather than antiplatelet therapy. However, neither NAVIGATE ESUS trial (32) nor RE-SPECT ESUS test (33) can prove that anticoagulant therapy is superior to antiplatelet therapy for patients with ESUS. On the one hand, there are a number of underlying causes associated with ESUS, such as subclinical AF, atrial cardiopathy,

unrecognized myocardial infraction, patent foramen ovale, and non-stenosing large-artery atherosclerosis (34). In addition, there is an overlap of these different embolic sources, each patient has an average of 2 embolic sources (21). Therefore, it may affect the clinical trial of secondary prevention for patients with ESUS. Rivaroxban can reduce the risk of IS recurrence in ESUS patients with moderate or severe left atrial enlargement in the NAVIGATE ESUS secondary analysis (35). The reason for the failure of these two trials may be mainly related to the complicated potential mechanism of ESUS, the benefits of anticoagulation therapy may be offset by the causes which may not be suitable for anticoagulation therapy. Given that the ESUS term have great heterogeneity, the prevention strategy should base on potential stroke mechanism. Anticoagulation therapy may be suitable for ESUS with atrial cardiopathy that may be an important subunit in the future study (34, 36). Looking forward to the result of ARCADIA clinical trial which is going to test whether oral apixaban is superior to aspirin in secondary prevention of ESUS patients with atrial cardiopathy (14).

This study was a single-center retrospective study with information bias and introduction selection bias. Since most of the included IS had not been fully evaluated, a large number of patients are excluded from the study, and the accurate proportion of atrial cardiopathy in each non-CE IS cannot be obtained. The patients included in the study did not receive long-term cardiac rhythm monitoring to detect the presence of subclinical AF, some undiscovered AF may be included in the ESUS group, and the patients did not receive further extended cardiac rhythm monitoring (such as, implantable cardiac monitoring devices) after discharge. Compared with transthoracic echocardiography, transesophageal echocardiography may be more accurate in identifying whether there was cardiac disease, further changing the diagnosis. The small sample size increased the possibility of the second error, which may affect the result and lead to the failure to obtain the real result. Furthermore, PTFV1 was calculated by clinicians artificially, and there was a certain error. The LAD was only based on the echocardiography results and should be standardized according to the height and weight of patients. However, most patients lacked the weight data. In addition, there were other biomarkers that were not compared (such as, atrial premature beat, paroxysmal supraventricular tachycardia, and troponin T).

## CONCLUSION

Since there were few patients with IS who had completed etiological evaluation, the classification was not detailed. Clinicians should strengthen the screening for the potential causes of patients with IS, and especially for occult AF, long-term dynamic ECG should be popularized to improve the detection rate of AF. The proportion of atrial cardiopathy in ESUS was significantly higher than that of LAA and SVO, and NT-proBNP >250 pg/ml was associated with a risk of death in patients with ESUS after discharge, while PTFV1 >5,000  $\mu$ V-ms was not associated with prognosis, and no patient met the criteria for severe left atrial enlargement.

## DATA AVAILABILITY STATEMENT

The raw data supporting the conclusions of this article will be made available by the authors, without undue reservation.

## ETHICS STATEMENT

Written informed consent was obtained from the individual(s) for the publication of any potentially identifiable images or data included in this article.

## REFERENCES

- Marnane M, Duggan CA, Sheehan OC, Merwick A, Hannon N, Curtin D, et al. Stroke subtype classification to mechanism-specific and undetermined categories by TOAST, A-S-C-O, and causative classification system: direct comparison in the North Dublin population stroke study. *Stroke*. (2010) 41:1579–86. doi: 10.1161/strokeaha.109.575373
- Lamy C, Giannesini C, Zuber M, Arquizan C, Meder JF, Trystram D, et al. Clinical and imaging findings in cryptogenic stroke patients with and without patent foramen ovale: the PFO-ASA study. *Atrial septal aneurysm. Stroke*. (2002) 33:706–11. doi: 10.1161/hs0302.104543
- Hart RG, Diener HC, Coutts SB, Easton JD, Granger CB, O'Donnell MJ, et al. Embolic strokes of undetermined source: the case for a new clinical construct. *Lancet Neurol*. (2014) 13:429–38. doi: 10.1016/s1474-4422(13)70310-7
- Kamel H, Okin PM, Longstreth Jr WT, Elkind MS, Soliman EZ. Atrial cardiopathy: a broadened concept of left atrial thromboembolism beyond atrial fibrillation. *Future Cardiol*. (2015) 11:323–31. doi: 10.2217/fca.15.22
- Calenda BW, Fuster V, Halperin JL, Granger CB. Stroke risk assessment in atrial fibrillation: risk factors and markers of atrial myopathy. *Nat Rev Cardiol*. (2016) 13:549–59. doi: 10.1038/nrcardio.2016.106
- Goette A, Kalman JM, Aguinaga L, Akar J, Cabrera JA, Chen SA, et al. EHRA/HRS/APHS/SOLAECE expert consensus on atrial cardiomyopathies: definition, characterization, clinical implication. *Europace*. (2016) 18:1455–90. doi: 10.1093/europace/euw161
- Kamel H, Okin PM, Elkind MS, Iadecola C. Atrial fibrillation and mechanisms of stroke: time for a new model. *Stroke*. (2016) 47:895–900. doi: 10.1161/strokeaha.115.012004
- Guichard JB, Nattel S. Atrial cardiomyopathy: a useful notion in cardiac disease management or a passing fad? *J Am Coll Cardiol*. (2017) 70:756–65. doi: 10.1016/j.jacc.2017.06.033
- Kamel H, Soliman EZ, Heckbert SR, Kronmal RA, Longstreth Jr WT, et al. P-wave morphology and the risk of incident ischemic stroke in the multi-ethnic study of atherosclerosis. *Stroke*. (2014) 45:2786–8. doi: 10.1161/strokeaha.114.006364
- Benjamin EJ, D'Agostino RB, Belanger AJ, Wolf PA, Levy D. Left atrial size and the risk of stroke and death. The framingham heart study. *Circulation*. (1995) 92:835–41. doi: 10.1161/01.cir.92.4.835
- Hoit BD. Left atrial size and function: role in prognosis. *J Am Coll Cardiol*. (2014) 63:493–505. doi: 10.1016/j.jacc.2013.10.055
- Cushman M, Judd SE, Howard VJ, Kissela B, Gutiérrez OM, Jenny NS, et al. N-terminal pro-B-type natriuretic peptide and stroke risk: the reasons for geographic and racial differences in stroke cohort. *Stroke*. (2014) 45:1646–50. doi: 10.1161/strokeaha.114.004712
- Lang RM, Bierig M, Devereux RB, Flachskampf FA, Foster E, Pellikka PA, et al. Recommendations for chamber quantification. *Eur J Echocardiogr*. (2006) 7:79–108. doi: 10.1016/j.euje.2005.12.014
- Kamel H, Longstreth Jr WT, Tirschwell DL, Kronmal RA, Broderick JP, et al. The Atrial cardiopathy and antithrombotic drugs in prevention after cryptogenic stroke randomized trial: rationale and methods. *Int J Stroke*. (2019) 14:207–14. doi: 10.1177/1747493018799981

## AUTHOR CONTRIBUTIONS

YN and MW drafted the manuscript, illustrated, and captioned all figures. YN, MW, WS, and GL provided critical review, revision of the manuscript, and approved the final draft for publication. All authors contributed to the article and approved the submitted version.

## ACKNOWLEDGMENTS

All authors thank Dr. Chaofeng Sun and Danjun Zhu for helpful comments and discussion on the manuscript.

- Hart RG, Catanese L, Perera KS, Ntaios G, Connolly SJ. Embolic stroke of undetermined source: a systematic review and clinical update. *Stroke*. (2017) 48:867–72. doi: 10.1161/strokeaha.116.016414
- Di Tullio MR, Sacco RL, Sciacca RR, Homma S. Left atrial size and the risk of ischemic stroke in an ethnically mixed population. *Stroke*. (1999) 30:2019–24. doi: 10.1161/01.str.30.10.2019
- Yaghi S, Moon YP, Mora-McLaughlin C, Willey JZ, Cheung K, Di Tullio MR, et al. Left atrial enlargement and stroke recurrence: the northern manhattan stroke study. *Stroke*. (2015) 46:1488–93. doi: 10.1161/strokeaha.115.008711
- Tan BYQ, Ho JSY, Sia CH, Boi Y, Foo ASM, Dalakoti M, et al. Left atrial volume index predicts new-onset atrial fibrillation and stroke recurrence in patients with embolic stroke of undetermined source. *Cerebrovasc Dis*. (2020) 49:285–91. doi: 10.1159/000508211
- Kamel H, Okin PM, Merkler AE, Navi BB, Champion TR, Devereux RB, et al. Relationship between left atrial volume and ischemic stroke subtype. *Ann Clin Transl Neurol*. (2019) 6:1480–6. doi: 10.1002/acn3.50841
- Yaghi S, Boehme AK, Hazan R, Hod EA, Canaan A, Andrews HF, et al. Atrial cardiopathy and cryptogenic stroke: a cross-sectional pilot study. *J Stroke Cerebrovasc Dis*. (2016) 25:110–4. doi: 10.1016/j.jstrokecerebrovasdis.2015.09.001
- Ntaios G, Perlepe K, Lambrou D, Sirimarco G, Strambo D, Eskandari A, et al. Prevalence and overlap of potential embolic sources in patients with embolic stroke of undetermined source. *J Am Heart Assoc*. (2019) 8:e012858. doi: 10.1161/jaha.119.012858
- Jalini S, Rajalingam R, Nisenbaum R, Javier AD, Woo A, Pikula A. Atrial cardiopathy in patients with embolic strokes of unknown source and other stroke etiologies. *Neurology*. (2019) 92:e288–94. doi: 10.1212/wnl.00000000000006748
- Khanam SS, Son JW, Lee JW, Yoon YJ, Yoon J, Lee SH, et al. Prognostic value of short-term follow-up BNP in hospitalized patients with heart failure. *BMC Cardiovasc Disord*. (2017) 17:215. doi: 10.1186/s12872-017-0632-0
- Tapanainen JM, Lindgren KS, Mäkilä TH, Vuolteenaho O, Leppälä J, Huikuri HV. Natriuretic peptides as predictors of non-sudden and sudden cardiac death after acute myocardial infarction in the beta-blocking era. *J Am Coll Cardiol*. (2004) 43:757–63. doi: 10.1016/j.jacc.2003.09.048
- Folsom AR, Nambi V, Bell EJ, Oluloye OW, Gottesman RE, Lutsey PL, et al. Troponin T, N-terminal pro-B-type natriuretic peptide, and incidence of stroke: the atherosclerosis risk in communities study. *Stroke*. (2013) 44:961–7. doi: 10.1161/strokeaha.111.000173
- Kwon Y, Misialek JR, Duprez D, Alonso A, Jacobs Jr DR, et al. Association between sleep disordered breathing and electrocardiographic markers of atrial abnormalities: the MESA study. *Europace*. (2017) 19:1759–66. doi: 10.1093/europace/euw328
- Tao L, Dai YJ, Shang ZY, Li XQ, Wang XH, Ntaios G, et al. Atrial cardiopathy and non-stenotic intracranial complicated atherosclerotic plaque in patients with embolic stroke of undetermined source. *J Neurol Neurosurg Psychiatry*. (2021). doi: 10.1136/jnnp-2021-327517. [Epub ahead of print].
- Li TYW, Yeo LLL, Ho JSY, Leow AS, Chan MY, Dalakoti M, et al. Association of electrocardiographic p-wave markers and atrial fibrillation in embolic stroke of undetermined source. *Cerebrovasc Dis*. (2021) 50:46–53. doi: 10.1159/000512179



29. Montalvo M, Tadi P, Merkler A, Gialdini G, Martin-Schild S, Navalkele D, et al. PR interval prolongation and cryptogenic stroke: a multicenter retrospective study. *J Stroke Cerebrovasc Dis.* (2017) 26:2416–20. doi: 10.1016/j.jstrokecerebrovasdis.2017.05.036
30. He J, Tse G, Korantzopoulos P, Letsas KP, Ali-Hasan-Al-Saegh S, Kamel H, et al. P-wave indices and risk of ischemic stroke: a systematic review and meta-analysis. *Stroke.* (2017) 48:2066–72. doi: 10.1161/strokeaha.117.017293
31. Kamel H, Elkind MS, Bhavane PD, Navi BB, Okin PM, Iadecola C, et al. Paroxysmal supraventricular tachycardia and the risk of ischemic stroke. *Stroke.* (2013) 44:1550–4. doi: 10.1161/strokeaha.113.001118
32. Hart RG, Sharma M, Mundl H, Kasner SE, Bangdiwala SI, Berkowitz SD, et al. Rivaroxaban for stroke prevention after embolic stroke of undetermined source. *N Engl J Med.* (2018) 378:2191–201. doi: 10.1056/NEJMoa1802686
33. Diener HC, Sacco RL, Easton JD, Granger CB, Bernstein RA, Uchiyama S, et al. Dabigatran for prevention of stroke after embolic stroke of undetermined source. *N Engl J Med.* (2019) 380:1906–17. doi: 10.1056/NEJMoa1813959
34. Kamel H, Merkler AE, Iadecola C, Gupta A, Navi BB. Tailoring the approach to embolic stroke of undetermined source: a review. *JAMA Neurol.* (2019) 76:855–61. doi: 10.1001/jamaneurol.2019.0591
35. Healey JS, Gladstone DJ, Swaminathan B, Eckstein J, Mundl H, Epstein AE, et al. Recurrent stroke with rivaroxaban compared with aspirin according to predictors of atrial fibrillation: secondary analysis of the NAVIGATE ESUS randomized clinical trial. *JAMA Neurol.* (2019) 76:764–73. doi: 10.1001/jamaneurol.2019.0617
36. Lattanzi S, Cagnetti C, Pulcini A, Morelli M, Maffei S, Provinciali L, et al. The P-wave terminal force in embolic strokes of undetermined source. *J Neurol Sci.* (2017) 375:175–8. doi: 10.1016/j.jns.2017.01.063

**Conflict of Interest:** The authors declare that the research was conducted in the absence of any commercial or financial relationships that could be construed as a potential conflict of interest.

**Publisher's Note:** All claims expressed in this article are solely those of the authors and do not necessarily represent those of their affiliated organizations, or those of the publisher, the editors and the reviewers. Any product that may be evaluated in this article, or claim that may be made by its manufacturer, is not guaranteed or endorsed by the publisher.

Copyright © 2022 Ning, Wei, Song and Luo. This is an open-access article distributed under the terms of the Creative Commons Attribution License (CC BY). The use, distribution or reproduction in other forums is permitted, provided the original author(s) and the copyright owner(s) are credited and that the original publication in this journal is cited, in accordance with accepted academic practice. No use, distribution or reproduction is permitted which does not comply with these terms.