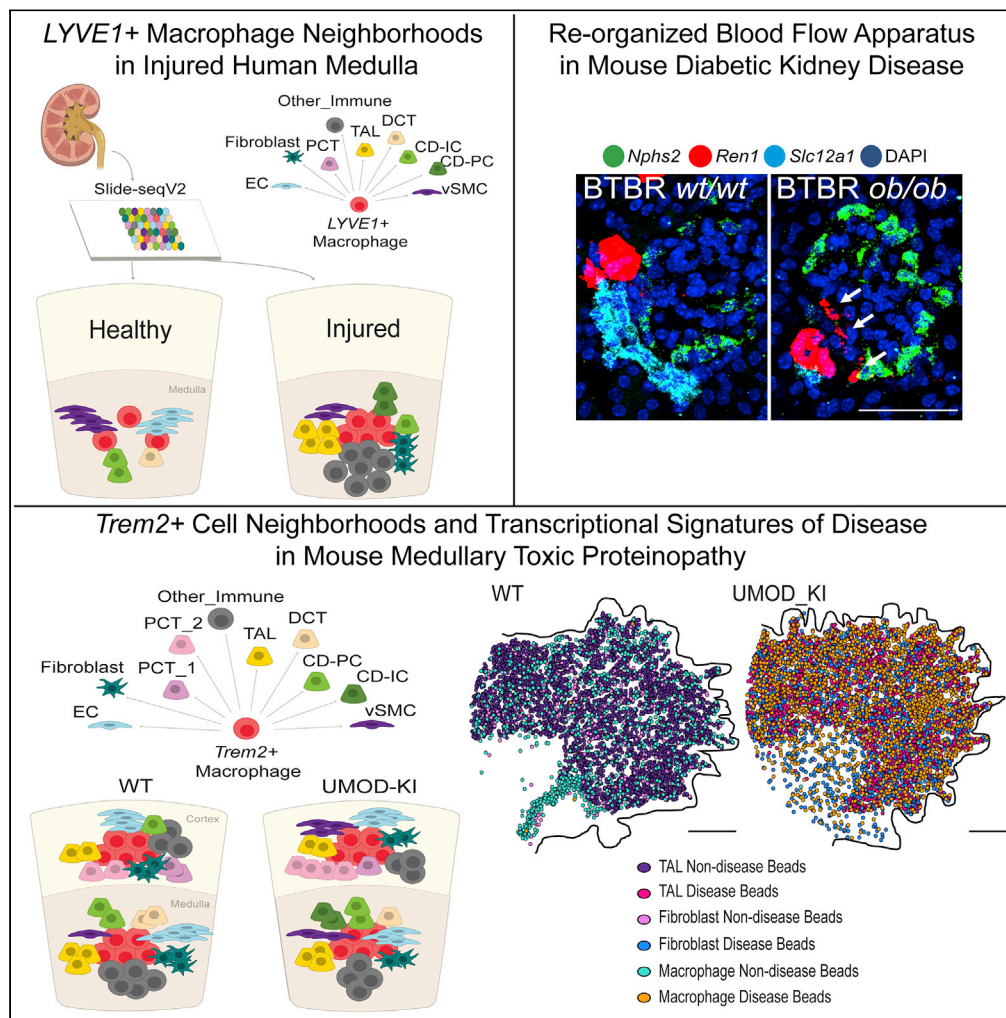


Article

High-resolution Slide-seqV2 spatial transcriptomics enables discovery of disease-specific cell neighborhoods and pathways



Jamie L. Marshall,
Teia Noel, Qingbo
S. Wang, ..., Evan
Z. Macosko, Fei
Chen, Anna Greka

jammars@gmail.com (J.L.M.)
agreka@broadinstitute.org
(A.G.)

Highlights

A cell neighborhood around LYVE1+ macrophages was discovered in human kidneys

The blood pressure regulating apparatus was re-organized in a diabetic mouse model

Cell neighborhoods around Trem2+ macrophages were found in a model of proteinopathy

A 77 gene signature associated with the UPR was defined in a model of proteinopathy

Marshall et al., iScience 25, 104097
April 15, 2022 © 2022 The Author(s).
<https://doi.org/10.1016/j.isci.2022.104097>



Article

High-resolution Slide-seqV2 spatial transcriptomics enables discovery of disease-specific cell neighborhoods and pathways

Jamie L. Marshall,^{1,18,*} Teia Noel,^{1,18} Qingbo S. Wang,^{2,3,4,5,18} Haiqi Chen,^{7,8,9,18} Evan Murray,¹⁰ Ayshwarya Subramanian,^{1,11} Katherine A. Vernon,^{1,6} Silvana Bazua-Valenti,^{1,6} Katie Liguori,¹ Keith Keller,^{1,13} Robert R. Stickels,^{8,14,15} Breanna McBean,¹⁶ Rowan M. Heneghan,¹ Astrid Weins,^{6,13} Evan Z. Macosko,^{10,12} Fei Chen,^{7,17} and Anna Greka^{1,6,19,*}

SUMMARY

High-resolution spatial transcriptomics enables mapping of RNA expression directly from intact tissue sections; however, its utility for the elucidation of disease processes and therapeutically actionable pathways remains unexplored. We applied Slide-seqV2 to mouse and human kidneys, in healthy and distinct disease paradigms. First, we established the feasibility of Slide-seqV2 in tissue from nine distinct human kidneys, which revealed a cell neighborhood centered around a population of LYVE1+ macrophages. Second, in a mouse model of diabetic kidney disease, we detected changes in the cellular organization of the spatially restricted kidney filter and blood-flow-regulating apparatus. Third, in a mouse model of a toxic proteinopathy, we identified previously unknown, disease-specific cell neighborhoods centered around macrophages. In a spatially restricted subpopulation of epithelial cells, we discovered perturbations in 77 genes associated with the unfolded protein response. Our studies illustrate and experimentally validate the utility of Slide-seqV2 for the discovery of disease-specific cell neighborhoods.

INTRODUCTION

Known for its structural complexity, the kidney performs vital functions that rely on spatially distinct cellular compartments, yet an understanding of spatially resolved, cell-type-specific responses to perturbations using high-resolution technologies (Stahl et al., 2016; Rodrigues et al., 2019; Stickels et al., 2021) is lacking. The nephron, the functional unit of the kidney, is composed of epithelial, mesenchymal, and endothelial cells, as well as a network of immune cells that contribute to organ defense and repair from injury. Anatomically, each kidney has an outer layer, the cortex, containing the glomeruli, through which blood is filtered, and an inner layer, the medulla, where urine is concentrated. Urine flows within tubules that coalesce in the renal pelvis, draining into the ureter and on to the bladder (Giebisch, 1972). Given its structural and functional complexity, second only to the brain, there is a significant need to develop spatial transcriptomics from intact kidney tissue both as a reference and to uncover disease-specific processes.

Several studies using single-cell (sc-) or single-nucleus (sn-) RNA sequencing of human and mouse kidney in health and disease have been performed (Schroeder et al., 2020; Subramanian et al., 2021; Wu et al., 2017; Park et al., 2018; Young et al., 2018; Lake et al., 2019; Ransick et al., 2019; Stewart et al., 2019; Menon et al., 2020; Chen et al., 2021b; Chen et al., 2021a, 2021c; Kaur and Advani, 2021; Meng et al., 2021; Muto et al., 2021; Sidhom et al., 2021; Clark et al., 2022) and have used spatial validation methods including immunofluorescence microscopy, fluorescence *in situ* hybridization, and targeted panels of a few dozen RNA probes or antibodies. However, these spatial methods are hampered by relatively low throughput (Choi et al., 2018; Goltsev et al., 2018; Kishi et al., 2019; Xia et al., 2019a, 2019b; Schürch et al., 2020; Alon et al., 2021). To date, efforts to spatially capture transcriptome-wide profiles in kidney cells *in situ* have been limited in resolution (Ferreira et al., 2021; Raghubar et al., 2020; Lake et al., 2021). Given that several cell types in spatially restricted areas are the hypothesized drivers of injury as a result of ischemia and inflammation (Sharfuddin and Molitoris, 2011; Zhang et al., 2008; Wyatt et al., 2016; Kramann and Menzel,

¹Kidney Disease Initiative, Broad Institute of MIT and Harvard, Cambridge, MA 02142, USA

²Program in Medical and Population Genetics, Broad Institute of MIT and Harvard, Cambridge, MA 02142, USA

³Program in Bioinformatics and Integrative Genomics, Harvard Medical School, Boston, MA 02115, USA

⁴Analytic and Translational Genetics Unit, Massachusetts General Hospital, Boston, MA 02114, USA

⁵Department of Statistical Genetics, Graduate School of Medicine, Osaka University, Osaka 565-0871, Japan

⁶Department of Medicine, Brigham and Women's Hospital and Harvard Medical School, Boston, MA 02115, USA

⁷Program in Cell Circuits and Epigenetics, Broad Institute of MIT and Harvard, Cambridge, MA 02142, USA

⁸Cecil H. and Ida Green Center for Reproductive Biology Sciences, University of Texas Southwestern Medical Center, Dallas, TX 75390, USA

⁹Department of Obstetrics and Gynecology, University of Texas Southwestern Medical Center, Dallas, TX 75390, USA

¹⁰Stanley Center for Psychiatric Research, Broad Institute of MIT and Harvard, Cambridge, MA 02142, USA

¹¹Klarman Cell Observatory, Broad Institute of MIT and Harvard, Cambridge, MA 02142, USA

¹²Department of Psychiatry, Massachusetts General

Continued



2021; Melo Ferreira et al., 2021), diabetic conditions (Subramanian et al., 2021; Hudkins et al., 2010; O'Brien et al., 2015, 2016; Yu and Bonventre, 2018), and genetic disorders (Piret et al., 2017; Devuyst et al., 2019; Dvela-Levitt et al., 2019; Olinger et al., 2020; Dvela-Levitt et al., 2021; Gibier et al., 2021; Shamam and Hashmi, 2021), high-resolution spatial transcriptomics in the kidney could catalyze mechanistic and therapeutic insights.

We recently generated a comprehensive cross-species scRNA-seq atlas (Subramanian et al., 2021) that identified shared broad cell classes and unique cellular states between mouse and human kidney across three regions (cortex, medulla, and renal pelvis). Among many insights, this work revealed multiple macrophage subsets including *C1QB + LYVE1+* macrophages in human adult kidneys. A unique *TREM2+* subset was expanded with age in kidneys of diabetic and obese mice and humans (Subramanian et al., 2021), mirroring obesity-associated macrophages in other tissues (Jaitin et al., 2019). Based on these results, we hypothesized that these specialized macrophage populations might be localized in disease-related micro-environments and that we could define these cell neighborhoods using high-resolution spatial transcriptomics.

To understand the way in which cells act in concert in the kidney, we employed Slide-seqV2, a high-resolution method for unbiased spatial transcriptomics, with a feature (or bead) size of 10 μm most commonly capturing one to two cells/feature and no more than three cells/feature (Rodrigues et al., 2019; Stickels et al., 2021). Leveraging this near-single-cell spatial resolution and single-cell atlases (Subramanian et al., 2021), we developed Slide-SeqV2 working protocols and analysis pipelines for human and mouse kidney tissue. Furthermore, we compared tissue from healthy and diseased kidneys, because the side-by-side analysis allowed us to measure changes in the organization of cellular neighborhoods, thus taking full advantage of the high spatial resolution.

RESULTS

We first established the applicability of Slide-seqV2 in human kidney, in samples from nine individual donors. We generated libraries from four arrays per sample with two arrays applied to cortex and two arrays applied to medulla in nephrectomy tissue (Table S1; samples were also used to build the single-cell reference (Subramanian et al., 2021). Histopathologic analysis performed by a kidney pathologist showed that seven samples were consistent with normal age-appropriate kidney tissue, one sample had subtle signs of early diabetic kidney disease (DKD), and one sample displayed clear evidence of injury (ischemia due to tumor compression; for relevant clinical data, see Table S1). The arrays were positioned at different locations in each tissue cross-section to cover as much area in each 3 mm array as possible. Following library preparation, we mapped cell types using our recently developed single-cell reference (Subramanian et al., 2021) (STAR Methods). Cell-type classifications of Slide-seqV2 features were confirmed based on established markers of gene expression (Figure S1). We compared 2 different cell-type assignment methods, NMFreg (Rodrigues et al., 2019) and the label transfer method from Seurat (Hafemeister and Satija, 2019; Stuart et al., 2019). We found that Seurat was best able to map all cell types in human kidneys with expected spatial patterns of known cell types in the cortex and medulla, the two main anatomical layers of the kidney. For example, proximal convoluted tubules (PCTs) were enriched in cortex, whereas distal convoluted tubules (DCTs) and collecting ducts (CDs) were more densely packed in the medulla (Figures 1B, S2–S7, S9A, and S10A). We thus used the Seurat label transfer method for all downstream analyses. As expected, glomeruli were found in the cortex and contained the appropriate cell types, including podocytes, endothelial cells (ECs), and mesangial cells (MCs) (Figures S2–S7 and S9A). We did not detect any significant changes in the early DKD sample (consistent with early disease lacking overt structural changes, as also previously shown (Subramanian et al., 2021). We also found no significant changes in injured cortex (where the cell mappings showed numerous fibroblasts, in agreement with Periodic acid-Schiff [PAS] staining that showed extensive fibrosis) (Figures S8 and S9). Therefore, in human kidney, we focused our efforts on studying injured medulla in the sample that showed ischemic injury due to tumor compression.

Given that ischemic injury is associated with inflammatory changes that involve macrophage populations (Sharfuddin and Molitoris, 2011; Melo Ferreira et al., 2021), we hypothesized that focusing on macrophages (Subramanian et al., 2021) might help us identify injury-specific changes. First, we identified macrophage beads in medulla from age-matched healthy and injured human tissue arrays (Figures S10A, S10B, S10D, and S10F; validated by quantification of *C1QB +* cells, a canonical macrophage cell marker (Zimmerman et al., 2019), in hybridization chain reaction [HCR] of the entire kidney tissue section). Among these

Hospital, Boston, MA 02114, USA

¹³Department of Pathology, Brigham and Women's Hospital, Boston, MA 02115, USA

¹⁴Graduate School of Arts and Sciences, Harvard University, Cambridge, MA 02115, USA

¹⁵Division of Medical Science, Harvard University, Boston, MA 02115, USA

¹⁶Broad Summer Research Program, Broad Institute of MIT and Harvard, Cambridge, MA 02142, USA

¹⁷Department of Stem Cell and Regenerative Biology, Harvard University, Cambridge, MA 02138, USA

¹⁸These authors contributed equally

¹⁹Lead contact

*Correspondence: jammers@gmail.com (J.L.M.), agreka@broadinstitute.org (A.G.)

<https://doi.org/10.1016/j.isci.2022.104097>

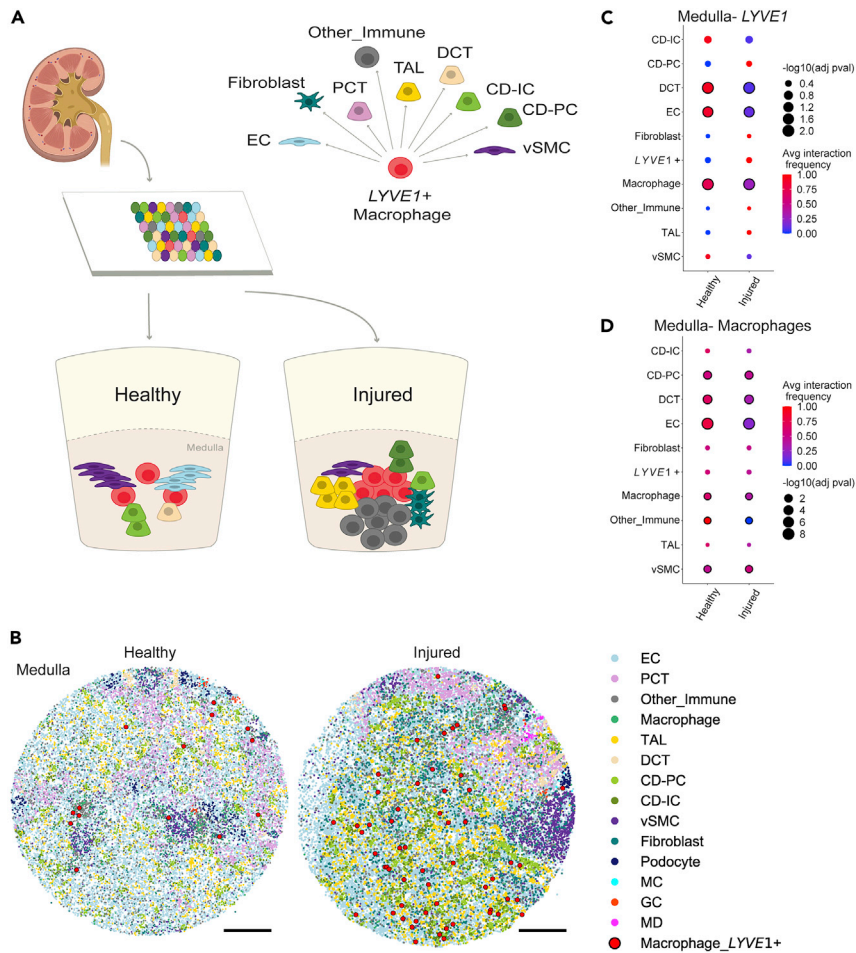


Figure 1. Slide-seqV2 spatial transcriptomics in human kidney informs methods to identify and quantify cell-cell interactions frequency and cell neighborhoods

(A) Schematic demonstrating the Slide-seqV2 method. A 10 μm sagittal section of kidney is placed onto a Slide-seqV2 array. The arrays bind to RNA in the tissue and result in a spatial transcriptome with cDNA containing a barcode from each bead.

(B) Medulla arrays showing all cell mappings and spatial locations of LYVE1+ macrophages in large red circles. Images of individual cell populations are plotted in Figures S61 and S62. Scale bars, 500 μm .

(C and D) Uniquely enabled by the spatial resolution, we identified neighboring cell types in the medulla of healthy and injured human kidney. LYVE1+ macrophages interact with endothelial cells (ECs) and distal convoluted tubular epithelial cells (DCTs) in healthy human medulla. These interactions are decreased in injured medulla. Dot plot shows the interaction frequency of (C) LYVE1+ macrophages and (D) all macrophages versus every other cell type in the tissue array. The color of the dots indicates the intensity of the interaction (red, increased; blue, decreased interaction). The size of the dots indicates the adjusted p value for cell-cell interactions, and significance is shown by a black outline around the dot (adjusted p value < 0.05). Cell types not represented in the dot plot had no interactions with macrophages of interest.

C1QB + macrophages, we prioritized looking for changes in macrophage subtypes that have been previously implicated in disease processes in the kidney and other tissues (Subramanian et al., 2021; Turnbull et al., 2006; Harvey and Gordon, 2012; Lim et al., 2018; Jaitin et al., 2019; Tang et al., 2019b; Xiong et al., 2019; Deczkowska et al., 2020; Zhu et al., 2020). We thus detected an increase in LYVE1+ macrophages (large red beads) in medullary injured tissue (Figures 1B, S10C, S10E, and S10F; validated by HCR showing C1QB + LYVE1+ cells). Taking advantage of the high spatial resolution, we calculated the average interaction frequency in the cellular neighborhood between LYVE1+ macrophages and immediately adjacent cell types (Figures 1A–1D). In human healthy medulla, LYVE1+ macrophage expansion led to a spatial neighborhood composed of DCT epithelial cells and EC (Figure 1C). In order to determine if these interactions were specific to LYVE1+ macrophages, the same analysis was performed with all medullary macrophages

that, in addition to DCT and EC, also interacted significantly with principal cells (CD-PC), other immune cells, and vascular smooth muscle cells (vSMC) (Figure 1D). Overall, LYVE1+ macrophage interactions with DCT and EC and all macrophage interactions with other immune cells were reduced in human injured medulla, perhaps consistent with increased fibrosis (Figures 1C, 1D, S8A, S8C, and S8E; Table S1). Most importantly, this work established the applicability of Slide-seqV2 in human kidney, including new computational approaches (STAR Methods, section entitled [macrophage–cell neighbor analysis and statistics](#)) that provide the blueprint for future, more detailed studies in human kidney tissue.

Because mouse tissue of the quality required for successful implementation of spatial transcriptomics is more readily attainable than human tissue, we turned our attention to established mouse models of kidney disease. We thus generated libraries from BTBR *ob/ob* mice, a genetic model of DKD, where the first signs of injury localize to the glomeruli (Hudkins et al., 2010; O'Brien et al., 2015, 2016). We chose this well-characterized mouse model with an available single-cell reference (Subramanian et al., 2021) because we wanted to take advantage of the high spatial resolution of Slide-seqV2 to detect transcriptome-wide changes in or near glomeruli, spatially defined structures composed of rare cell types (Greka and Mundel, 2012). We were particularly interested in the juxtaglomerular apparatus (JGA), a structurally distinct, spatially compact structure located adjacent to glomeruli, that is composed of renin (*Ren1*)-producing granular cells (GCs) and rare macula densa (MD) cells, which, working in concert, regulate blood flow to the kidney filter (Bachmann and Oberbäumer, 1998; Yao et al., 2009; Kosovic et al., 2020). In DKD, the JGA is known to shift its cellular composition (Lin et al., 2018; Tang et al., 2019a), but, to date, the underlying cellular changes have not been described with high spatial, near-single-cell resolution.

Seven arrays were captured from 10 μ m sagittal sections of kidney from four BTBR w/w controls and four BTBR *ob/ob* mice. We used our recently developed scRNA-seq reference (Subramanian et al., 2021) for cell-type mappings (STAR Methods; Figures S11–S13) and characterized the transcriptional effects of disease in three ways. First, we captured a significant increase in the measured area of individual glomeruli in BTBR *ob/ob* mice compared with controls (Figures 2A–2E and S14A–S14D) (Hudkins et al., 2010; O'Brien et al., 2016). Second, we examined the composition of the JGA. We identified glomeruli-adjacent beads positive for *Ren1* (Clark et al., 1997) and negative for *Slc12a3* (a classic distal nephron marker (Chen et al., 2021b; Olde Hanhof et al., 2021)), and another set positive for *Ptger3*, *Klf6*, or *Nos1* (MD marker genes (Chen et al., 2021b; He et al., 2021)), and labeled the corresponding cells as GC or MD, respectively. MDs were rare (~0.6% of unfiltered TAL calls were classified as MD). However, in diabetic BTBR *ob/ob* tissue, we detected a significant increase in the percentage of GCs (Figures 2F and S14E) and in the distance between the center of each glomerulus and GCs (Figures 2G, 2H and S15A). Consistent with overall tissue hypertrophy, as observed in BTBR *ob/ob* mice (Hudkins et al., 2010; O'Brien et al., 2015, 2016), we found a significant increase in the distance between the centers of glomerular and GC structures. In contrast, the distance measured between the edges of the glomeruli and GC structures did not show a significant increase (Figure S14G), arguing against GCs migrating away from glomeruli. This spatial expansion of the JGA in diabetes, reminiscent of previous work in glomeruli using labor-intensive lineage tracing studies (Tighe, 1977; Gomez et al., 1990; Martini and Danser, 2017; Tang et al., 2019a), was readily detected by Slide-seqV2.

Taking advantage of the fact that each cell in the spatial array is linked to a transcriptome comprising of several hundred genes (STAR Methods), we developed a clustering and differential gene expression (DGE) pipeline. Focusing on podocytes, whose injury is a hallmark of DKD (Hudkins et al., 2010), we compared the transcriptional profiles for all podocyte beads. Specifically, we examined their clustering in an unbiased fashion, irrespective of whether the podocyte beads came from a BTBR w/w or diabetic BTBR *ob/ob* array; we let their transcriptional profiles dictate whether they were considered “healthy” or “diseased” (Figure S16; Tables S2–S5). Based on transcriptomes alone, podocyte beads from the “diseased” cluster that mapped to diabetic BTBR *ob/ob* glomeruli were found to express *Ctgf*, a known podocyte injury marker gene (Table S3). Furthermore, these results were validated by HCR measuring co-expression of *Ctgf* and *Nphs2*, a podocyte marker gene (Yokoi et al., 2008; Lipson et al., 2012) (Figures 2I, 2J and S15B). Pathway analysis highlighted mechanisms of high relevance to podocyte pathology such as lipid-mediated signaling, regulation of stress fiber assembly, and apoptosis (Table S6, Figure S14F) (Chuang and He, 2009; May et al., 2014; Garg, 2018; Gil et al., 2021). In sum, we captured disease-specific changes in spatially restricted neighborhoods of podocytes and granular cells in a mouse model of DKD. More generally, implementing Slide-seqV2 in mouse tissue provided a valuable foundation for our subsequent studies of a significantly understudied toxic proteinopathy.

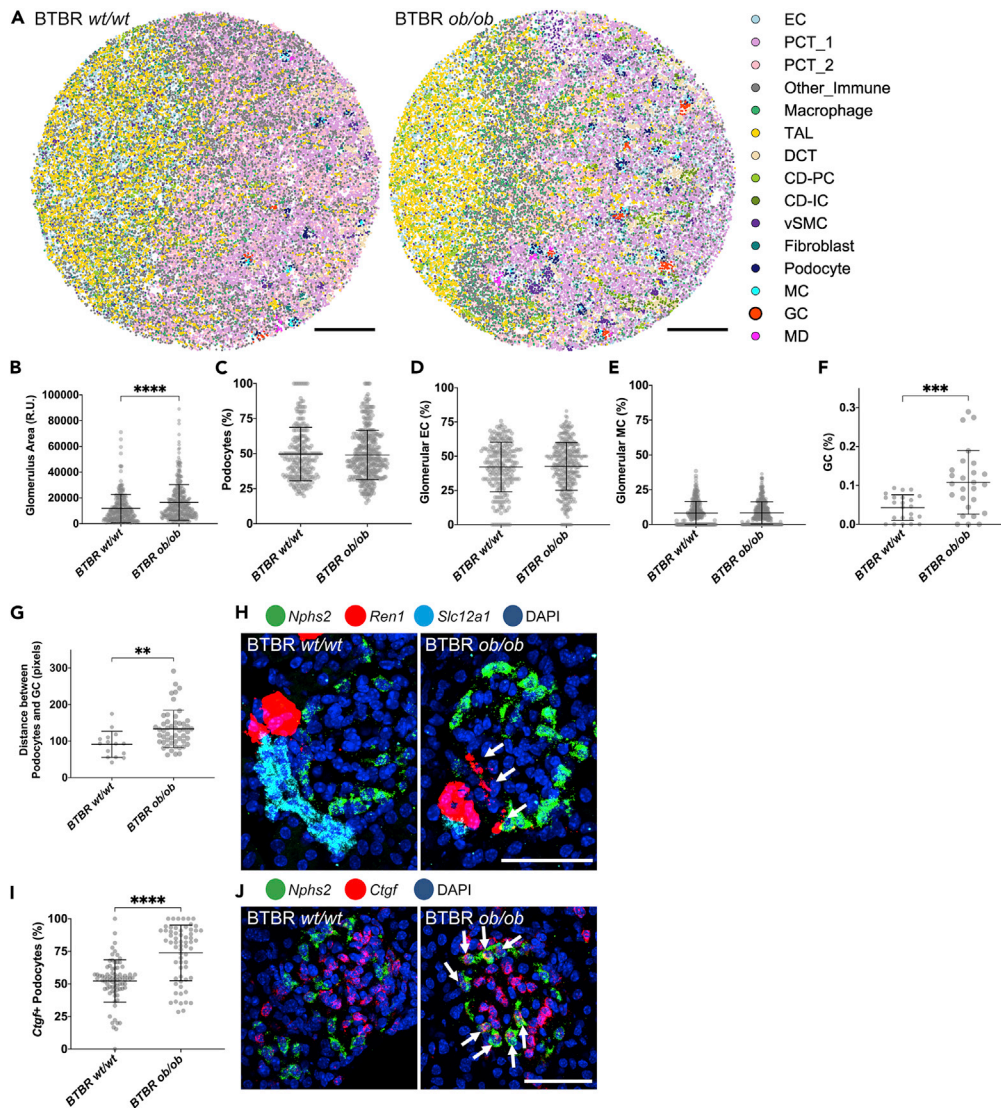


Figure 2. Near-single-cell spatial resolution in diabetic mouse kidney reveals an expansion of granular cells and a disrupted blood flow regulating apparatus

(A) Arrays displaying cell types in BTBR *w/w* (left) and BTBR *ob/ob* diabetic mice (right). Images of individual cell populations are plotted in Figure S64. Scale bars, 500 μ m.

(B–F) Plots from Slide-seq arrays showing (B) average area of glomeruli (p value <0.0001), (C) percentage of beads classified as podocytes, (D) percentage of beads classified as glomerular endothelial cells, (E) percentage of beads classified as glomerular mesangial cells, (F) percentage of beads classified as granular cells (p value 0.0009) in BTBR *w/w* and BTBR *ob/ob* mice.

(G) Plot from Slide-seq arrays showing the average distance between the center of glomerulus and granular cell cluster in BTBR *w/w* and BTBR *ob/ob* mice (p value 0.0018). Data were obtained from cross-sections of four mice per genotype.

(H) HCR validation images, showing *Nphs2*+ podocytes, *Ren1*+ granular cells, *Slc12a1*+ TAL, and all cells in DAPI. Scale bar, 50 μ m. Disorganized *Ren1*+ cells are denoted with white arrows.

(I and J) HCR quantification of (p value <0.0001) and (J) HCR images of *Ctgf*+ *Nphs2*+ injured podocytes (arrows). Scale bar, 50 μ m. Data obtained from entire cross sections of a kidney from four mice per genotype. All error bars represent standard deviation of the mean.

Seeking to define actionable disease mechanisms, we turned to homozygous *UMOD*-C125R knockin (KI) mice (Piret et al., 2017). These mice are a model of a poorly understood, monogenic disorder called *UMOD* kidney disease (UKD) (Devuyst et al., 2019), caused by the toxic accumulation of mutant *UMOD* protein in the kidney (Piret et al., 2017). We generated libraries in five arrays from kidneys of three WT control

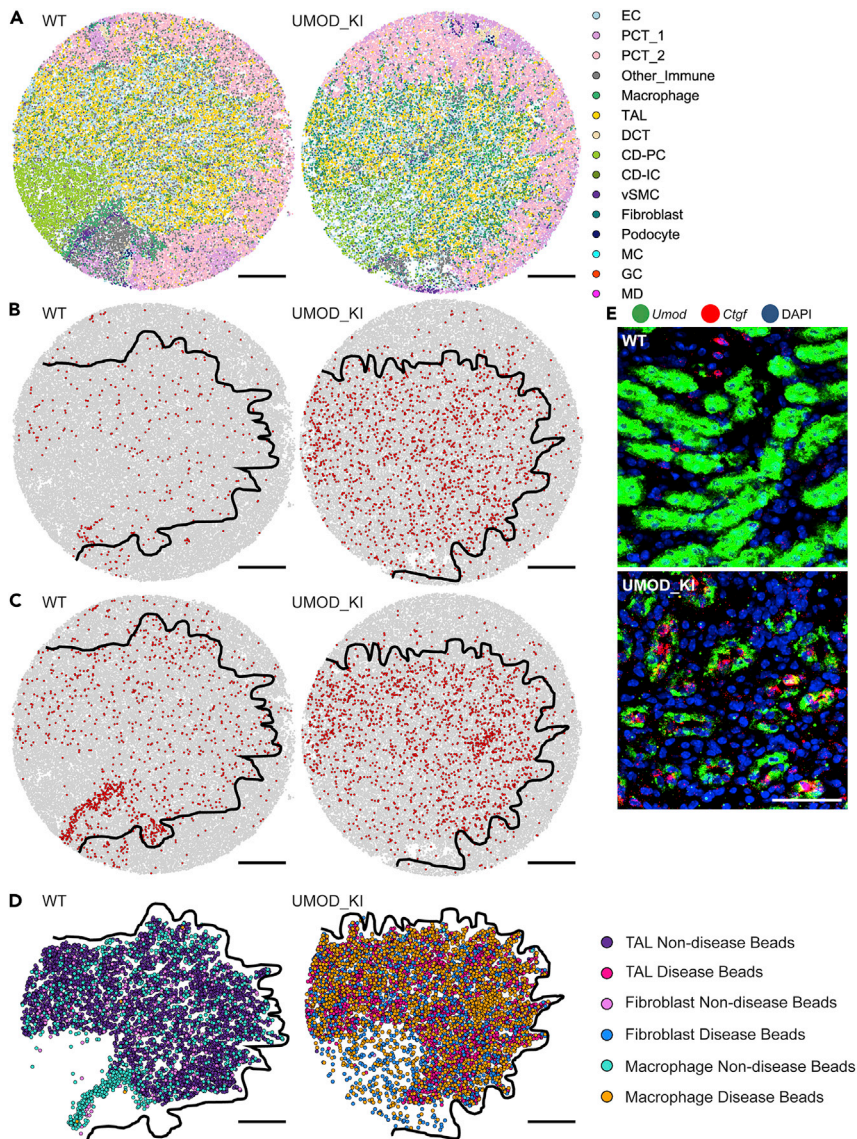


Figure 3. Slide-seqV2 reveals disease-specific, medulla-restricted cell neighborhoods and injured epithelial cells in a mouse model of a toxic proteinopathy due to *Umod* mutations

(A–C) Arrays displaying all cell types in WT (left) and UMOD-KI mice (right). Images of individual cell populations are plotted in Figure S65. Arrays showing delineation of cortex vs medulla in WT and UMOD-KI arrays where red beads show the spatial location and quantity of (B) fibroblasts and (C) macrophages.

(D) Based on unbiased DGE, array plots show spatial mapping of TAL (non-disease in purple; disease in red), fibroblast (non-disease in pink; disease in blue), and macrophage beads (non-disease in green; disease in orange) in WT and UMOD-KI tissue. Beads classified by DGE as “disease” map primarily onto the medulla of UMOD-KI arrays, compared with beads classified as “nondisease” that map primarily onto the medulla of WT arrays (Fisher exact test $p < 10^{-100}$). Scale bars, 500 μm .

(E) HCR images of *Umod* + *Ctgf* + double-positive injured TALs. Scale bar, 50 μm .

and five homozygous UMOD-KI six-month-old mice (Piret et al., 2017). At this age, homozygous UMOD-KI mice have detectable kidney disease associated with inflammation and fibrosis (Piret et al., 2017). Cell types were mapped to arrays (Subramanian et al., 2021), and a border was drawn to separate cortex from medulla based on the presence of PCTs in the cortex and the concentration of TAL and CDs in the medulla (Figures S17–S19). A significant increase in fibroblast and macrophage beads was observed in the medulla of homozygous UMOD-KI mice compared with controls (validated by HCR for *Ctgf*⁺ and *Itga8*⁺ fibroblasts (Muhl et al., 2020) and *C1qb*⁺ macrophages (Zimmerman et al., 2019); Figures 3A–3C and S20). Significant

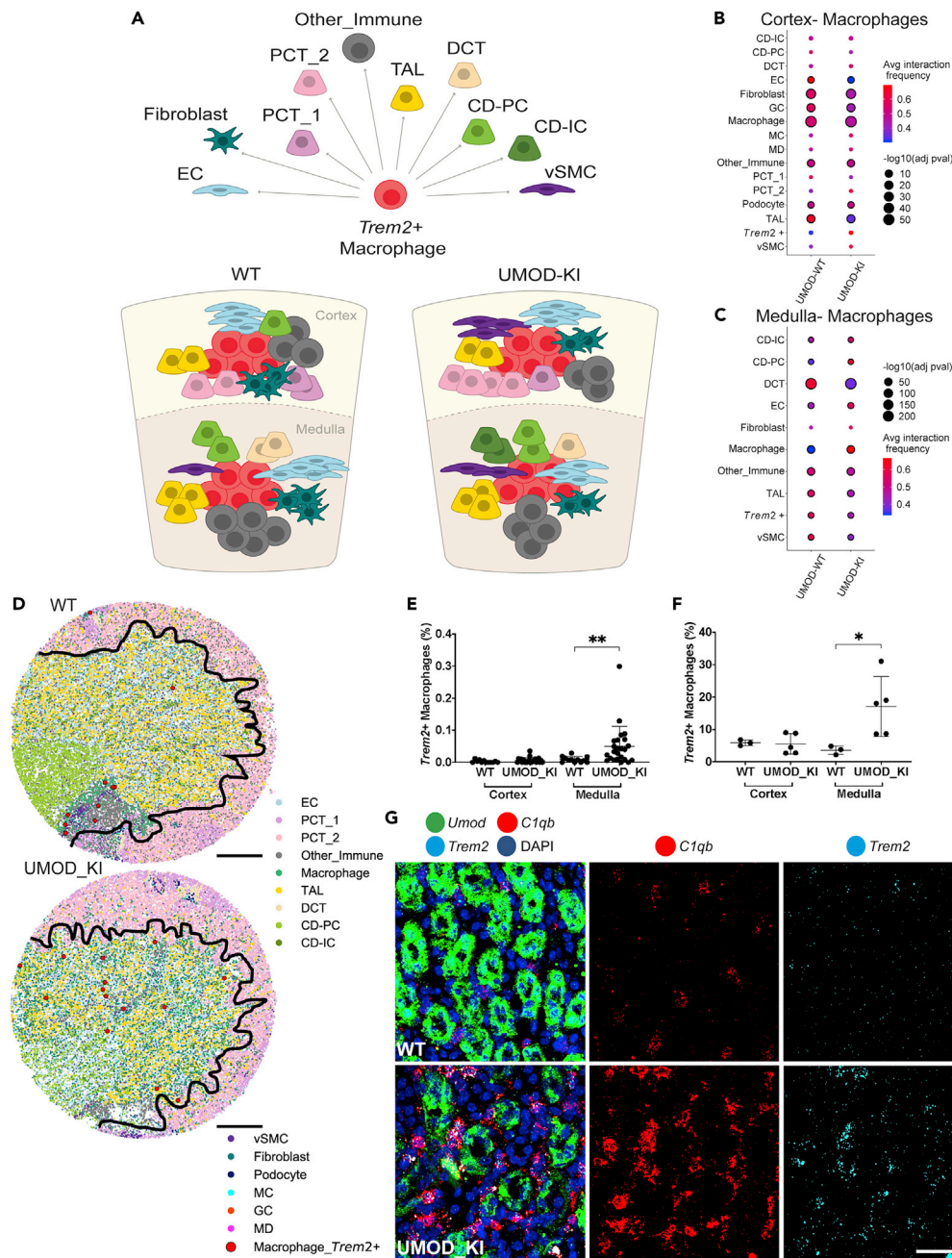


Figure 4. Rare *Trem2*+ macrophage expansion associated with disease and localized specifically to kidney medulla

(A) Schematic showing location, cortex versus medulla, of *Trem2*+ macrophages and immediately adjacent neighboring cell types.

(B and C) Uniquely enabled by high spatial resolution, we quantified macrophage-neighbor cell interactions. Dot plots show average cell-cell interaction frequencies (relative proportions) for all macrophages in (B) cortex and (C) medulla. Significant interactions are displayed with a black border around colored circles. Cell types not represented in the dot plot had no interactions with macrophages of interest.

(D) Arrays showing all cell mappings, cortex and medulla delineation, and spatial localization of *Trem2*+ macrophages in large red circles. Scale bars, 500 μ m.

(E) Plots from Slide-seqV2 arrays showing percentage of beads classified as *Trem2*+ macrophages (p value 0.003). Each point represents an array from 3 WT to 5 UMOD-KI mice. Error bars represent SD of the mean.

Figure 4. Continued

(F) Plots generated from HCR validation showing percentage of cells that are *Trem2*⁺ macrophages (p value 0.0357). Each point represents a mouse. Error bars represent SD of the mean.

(G) HCR images from two different WT and UMOD-KI mice showing *Trem2*⁺ *C1qb*⁺ macrophages in the medulla (*Umod*). Scale bar, 50 μ m.

Ctgf expression was detected by HCR in medullary *Umod* + TAL epithelial cells (Miao et al., 2021) of homozygous UMOD-KI mice, suggesting cellular injury in *Umod* + TALs (Figures 3E and S20F). Unbiased clustering and DGE analysis of cortex and medulla identified disease-specific clusters for TAL, fibroblasts, macrophages, vSMCs, and CD-PCs in the medulla, as well as fibroblast, glomerular EC, and CD-PC in the cortex (Tables S7–S14; Figures S21 and S22).

Taking advantage of the spatial resolution, we wondered whether we could determine the location of medullary disease-associated cell types compared with healthy cells based only on unbiased clustering, without any prior knowledge of their localization in the tissue. We thus classified individual beads into either healthy or disease states based on gene expression profile alone and characterized their spatial distribution across all of the arrays from WT and UMOD-KI mice. This analysis showed that healthy (“non-disease”) cells largely mapped onto the medulla of WT arrays (99.8%), whereas disease-associated cell types were predominantly localized in the medulla of homozygous UMOD-KI arrays (Figure 3D; 63.1%, Fisher exact test $p < 10^{-100}$). This analysis, uniquely afforded by high-resolution spatial transcriptomics, suggested that fibroblasts (blue), TAL epithelial cells (red), and macrophages (orange) in the medulla of UMOD-KI mice may form disease-specific cell neighborhoods.

To probe the question of cell neighborhoods further, we employed the spatial neighbor interaction frequency method, as we previously established in human tissue (Figures 1C and 1D), to determine the identity of cell types immediately adjacent to macrophages (Figures 4A–4C; STAR Methods). We thus identified medulla-specific cell neighborhoods centered on macrophages interacting with diverse kidney cell types (Figures 4A–4C). Of interest, specifically in the setting of disease, we observed enhanced interactions between medullary macrophages and CD-PC, collecting duct intercalated cells (CD-IC) and ECs (Figure 4C). Focusing further on macrophage subsets, we found a significantly higher percentage of *Trem2*⁺ macrophages in the medulla of UMOD-KI mice (large red beads; Figures 4D and 4E). HCR confirmed a significant expansion of double-positive *C1qb*⁺ *Trem2*⁺ cells in the medulla of UMOD-KI mice (Figures 4F and 4G). These results suggest that *Trem2*⁺ macrophages in the medulla of UMOD-KI mice may expand in response to interactions with specific-cell neighbors, a previously unknown mechanism in this disease.

To gain a deeper understanding of disease-relevant pathways, we probed our data for detectable changes in the unfolded protein response (UPR), a cellular mechanism triggered by the accumulation of misfolded mutant UMOD protein in UMOD-KI mouse kidneys (Piret et al., 2017; Devuyt et al., 2019). Using a validated UPR pathway signature (Adamson et al., 2016), DGE analysis between WT and UMOD-KI arrays (Figures 5A and S23) revealed changes in the UPR (Walter and Ron, 2011; Karagöz et al., 2019), specifically in medullary TALs (Figure 5A; 77 genes). In contrast, when we aggregated all TALs (cortex and medulla), we did not detect any significant DGE changes between WT versus KI tissue (Figure S23A). Similar analyses focusing on cortical TALs alone or PCTs alone did not yield any significant differences in UPR gene expression either (Figures S23B and S23C). The loss of signal when looking at the totality of TALs (or other cell subsets) suggests that if we only relied on bulk RNA-Seq or even on scRNA-Seq without the high spatial resolution afforded by Slide-SeqV2, we would not have been able to identify this disease-associated UPR signature.

Three to four markers of the UPR have been previously used to implicate this pathway in UKD (Piret et al., 2017; Devuyt et al., 2019); however, coordinate changes in the expression of 77 UPR genes in *Umod*-expressing medullary TALs have not been described before. Among significant genes in medullary TAL features were *Slc35b1* (IRE1 α pathway) and *Trib3*, *Mthfd2*, and *Slc3a2* (PERK pathway; Figures 5B–5E and S24–S29), which showed that the medullary TAL epithelial cells were selectively and most highly affected by two specific UPR pathways, IRE1 α and PERK (Figures S27–S29). Among UPR-associated genes, *Tmed9* was upregulated and selectively localized to *Umod*-expressing medullary TALs (Figure 5A, red arrow). We have previously shown that the small molecule (BRD4780) targets TMED9 for the treatment of MUC1 kidney disease, a toxic proteinopathy caused by the accumulation of mutant MUC1 protein in epithelial cells in the kidney (Dvela-Levitt et al., 2019). We reasoned that the specific co-localization of *Umod* and *Tmed9* in cells with detectable UPR-mediated injury (medullary TALs) pointed to the utility of Slide-seqV2 for the detection of therapeutically relevant targets.

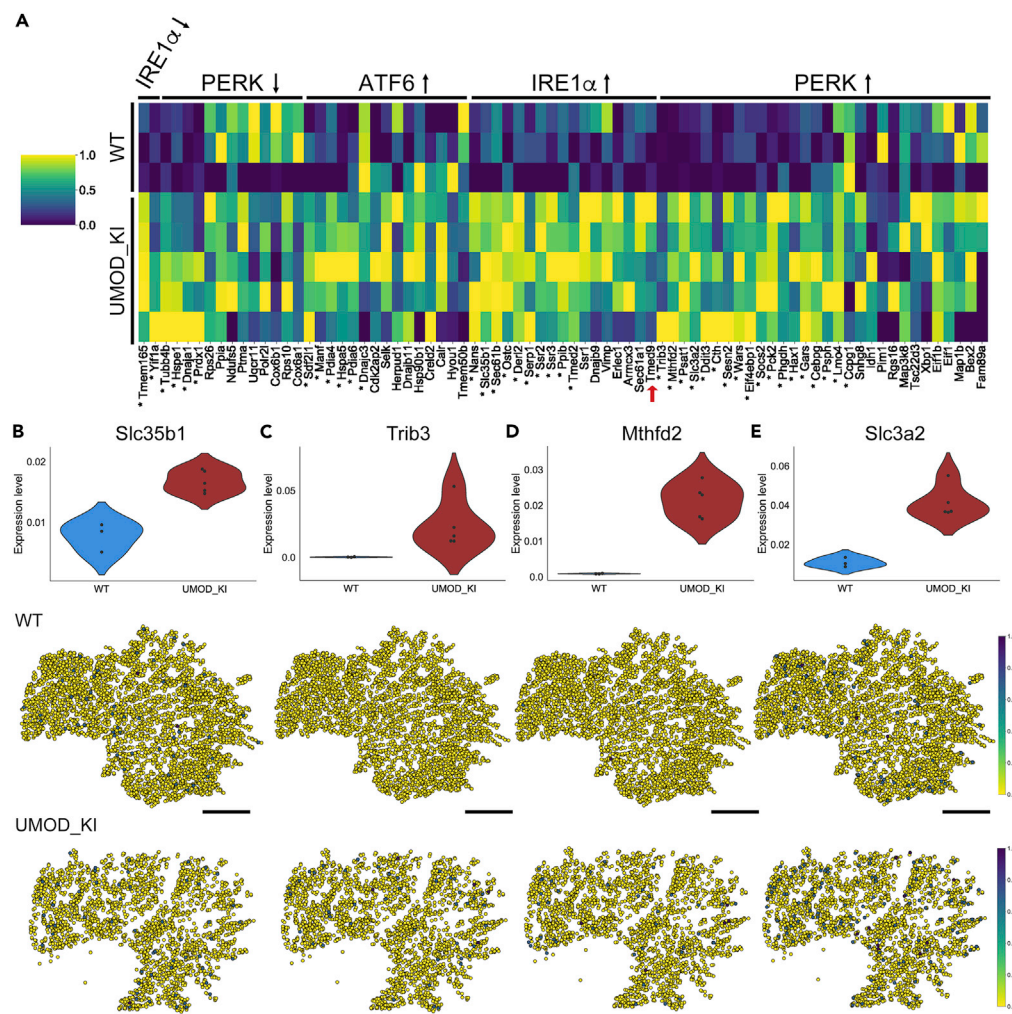


Figure 5. Spatially restricted, cell-specific, and disease-associated perturbations in 77 genes associated with the UPR in medullary TAL epithelial cells uniquely revealed by Slide-seqV2

(A–E) Heatmap showing relative expression level of 77 UPR genes averaged across arrays in WT and UMOD-KI mice from medullary TAL beads. *Tmed9* is indicated with a red arrow. Significant genes are denoted with an asterisk (Benjamini-Hochberg-corrected $p < 0.05$). Violin plots showing expression level in medulla TAL (top) and all medulla TAL beads in arrays (middle, bottom) are shown with expression level for notable genes in (B) IRE1 α upregulated pathway gene, *Slc35b1* and PERK upregulated pathway genes, (C) *Trib3*, (D) *Mthfd2*, and (E) *Slc3a2*. Scale bars, 500 μ m.

DISCUSSION

Spatial transcriptomics has revolutionized the field of single-cell genomics and provided new insights into many biological systems such as the brain, heart, liver, and testes (Lein et al., 2017; Carlberg et al., 2019; Chen et al., 2021a, Chen et al., 2020; Navarro et al., 2020; Roth et al., 2020; Saviano et al., 2020). However, the potential of spatial transcriptomics to identify therapeutically actionable pathways has not yet been explored. In this study, we explored the utility of spatial transcriptomics to uncover disease-associated cell-cell interactions and pathways, and, importantly, we performed rigorous experiments (HCR, mouse studies) to experimentally validate these findings. Several critical conclusions can be drawn from these studies.

First, we developed tools and methods to identify disease-specific cell neighborhoods. In human kidney, we found a cell neighborhood centered around *LYVE1+* macrophages, most notably in the medulla. In other tissues, *LYVE1+* macrophages have been shown to protect from fibrosis (Lim et al., 2018). We can therefore speculate that *LYVE1+* cell neighborhoods in human kidneys may reflect an adaptive response

mounted to prevent or abrogate the pro-fibrotic sequelae of injury. Disease-specific cell neighborhoods were also identified in a mouse with diabetic kidney disease. In line with prior studies (Tighe, 1977; Gomez et al., 1990; Martini and Danser, 2017; Tang et al., 2019a), we characterized a disordered kidney filter and blood-flow-regulating apparatus (JGA) associated with an expanding population of rare GCs in diabetic kidneys. These findings illustrated how the high spatial resolution of Slide-seqV2 empowered us to detect changes within and between spatially restricted structures.

Second, drawing from the blueprint established in these initial studies in human and mouse, we made a new discovery in mice with a toxic proteinopathy (UKD). Specifically, we identified a disease-specific, medulla-restricted cell neighborhood composed of *Trem2*⁺ macrophages (Subramanian et al., 2021) and specific epithelial (TAL) and fibroblast cell populations. Because resident macrophage *Trem2* acts as an immunomodulatory receptor on resident macrophages that senses tissue damage and negatively regulates inflammation (Turnbull et al., 2006; Jaitin et al., 2019; Tang et al., 2019b; Xiong et al., 2019; Deczkowska et al., 2020; Zhu et al., 2020), our results suggest that medullary *Trem2*⁺ macrophages may expand in response to neighboring cell injury. More generally, resident macrophage-epithelial cell neighbor interactions may underlie several kidney diseases (Subramanian et al., 2021) associated with inflammation and fibrosis (Kuppe et al., 2021).

Lastly, a critical aspect of this study was the development of new analytical methods and pipelines to map cell states and interactions onto spatial arrays from mouse and human kidney, relying exclusively on spatial near single-cell transcriptome-wide profiles. Taken together, our experiments illustrate how we can harness the power of Slide-seqV2, and spatial transcriptomics more broadly, to gain biological insights by a “one-and-done” approach that simultaneously monitors cell-cell interactions and numerous genes and pathways in an unbiased fashion. Similar to RNA-Seq supplanting the need for RT-PCR, we speculate that this technology may mature to the point that it may minimize or even replace “one-by-one” molecule detection by labor intensive *in situ* and immunolocalization methods.

In sum, our work provides a foundational framework for near-single-cell spatial transcriptomics in the kidney, a functionally complex tissue with intricate architecture. Building on the paradigm that many diseases, from cancer to neurodegeneration, depend on dynamic cell-cell interactions in spatially restricted micro-environments (Song and Colonna, 2018; Elia and Haigis, 2021), our studies illustrate the utility of high-resolution spatial transcriptomics, to uncover disease-specific cell neighborhoods and pathways.

Limitations of study

We acknowledge that our results have several limitations. First, compared with canonical scRNA-seq data, Slide-seqV2 data have limited power for the detection of genes with low expression levels at near-single-cell resolution. We discuss potential methods to deconvolve genes/beads with low expression levels in (Noel et al., 2022) and expect more methods to be developed in the future. In addition, future spatial transcriptomics technologies will likely overcome this problem by using smaller beads. Second, Slide-seqV2 data may have limited power for the identification and spatial localization of rare cell types due to stringent clustering and filtering processes. Future advances in computational methods are likely to improve data analysis pipelines.

STAR★METHODS

Detailed methods are provided in the online version of this paper and include the following:

- [KEY RESOURCES TABLE](#)
- [RESOURCE AVAILABILITY](#)
 - Lead contact
 - Materials availability
 - Data and code availability
- [EXPERIMENTAL MODEL AND SUBJECT DETAILS](#)
 - Animals
 - Human tissue
- [METHOD DETAILS](#)
 - Slide-seqV2
 - Hybridization chain reaction (HCR)

- Periodic acid schiff (PAS) staining
- **QUANTIFICATION AND STATISTICAL ANALYSIS**
- Image analysis
- Cell type classification
- Segmentation of medulla and cortex regions
- Cell type curation
- Glomerulus, GC, and MD detection
- PCT, DCT, and CD-PC detection
- CD-IC detection
- Immune cell, fibroblast, and vSMC detection
- Spatial outlier detection
- Cell type structure assignment
- Quantifying the morphology of glomeruli
- Cell type proportion quantification
- Transcriptomic data preprocessing
- Disease state clustering and differential expression analysis
- Macrophage–Cell Neighbor Analysis and Statistics
- Glomerulus and granular cell distance computation
- UPR pathway analysis in UMOD mice

SUPPLEMENTAL INFORMATION

Supplemental information can be found online at <https://doi.org/10.1016/j.isci.2022.104097>.

ACKNOWLEDGMENTS

We thank Rajesh Thakker at the University of Oxford for providing the UMOD-KI mice used in this study, Sophia Liu for discussions and advice on immune cells, Pawan Kumar for generation of beads used in the arrays, Jilong Li for developing the computational pipeline used to map sequencing data to spatial locations, Dylan Cable for advice on RCTD, Aleks Goeva for advice and code for mapping cell types with NMF-reg, Terri Woo for performing PAS staining on kidney tissue, Michael Howard for mouse husbandry and treatments, and Jillian Shaw, Juanchi Pablo, and Aviv Regev for comments on the manuscript. The authors thank all members of the Greka and Chen labs for comments and suggestions. We thank the following funding agencies for supporting this work: BroadIgnite (JLM), CZI Seed Networks grant number CZI2019-02447 (AG, FC), NIH grants DK095045 and DK099465 (AG).

AUTHOR CONTRIBUTIONS

JLM conceived of and designed the study, collected mouse tissue, performed all slide-seqV2 and HCR experiments, supervised data analysis, drafted figures, and wrote the manuscript. TN performed data analysis for slide-seqV2 data, drafted figures, and wrote the manuscript. QSW supervised and performed data analysis for slide-seqV2 data, provided high-level direction for data analysis, and wrote the manuscript. HC developed computational methods for both HCR and slide-seqV2, performed HCR image analysis, and wrote the manuscript. EM generated all slide-seqV2 arrays. KAV assisted with procurement of human samples, AS performed computational analysis of human and BTBR w/w mouse single-cell data used for mapping cell types on slide-seqV2 data, and KAV and AS contributed to findings on *LYVE1+* and *Trem2+* macrophages from single-cell analysis of human and mouse kidneys. KL designed immune cell interaction schematics. RRS performed experiments using the original slide-seq version 1 protocol. BM performed analysis of NMF-reg cell mappings and cell-type interactions. RMH collected images of PAS stained tissue. KK and AW assisted with procurement of human samples. EZM provided Slide-seqV2 arrays for this study. FC provided Slide-seqV2 arrays for this study, assisted with study design and implementation, and provided input on results. AG supervised the study and wrote the manuscript. All authors reviewed and provided input on the manuscript.

DECLARATION OF INTERESTS

AG serves as a founding advisor to Goldfinch Biopharma and to a new Atlas Ventures funded company, with respective agreements reviewed and managed by Mass General Brigham (MGB) and the Broad Institute of MIT and Harvard in accordance with their conflict of interest policies. RRS, FC, and EZM are inventors on a pending patent application related to the development of Slide-seq. EZM is an advisor to Curio

Biosciences, Inc. FC is a paid consultant for Atlas Bio. KAV is currently an employee and shareholder of Q32 Bio, Inc. JLM is currently an employee and shareholder of Solid Biosciences, Inc.

Received: December 13, 2021

Revised: February 15, 2022

Accepted: March 11, 2022

Published: April 15, 2022

REFERENCES

- Adamson, B., Norman, T.M., Jost, M., Cho, M.Y., Nuñez, J.K., Chen, Y., Villalta, J.E., Gilbert, L.A., Horlbeck, M.A., Hein, M.Y., et al. (2016). A multiplexed single-cell CRISPR screening platform enables systematic dissection of the unfolded protein response. *Cell* **167**, 1867–1882.e21.
- Alon, S., Goodwin, D.R., Sinha, A., Wassie, A.T., Chen, F., Daugharthy, E.R., Bando, Y., Kajita, A., Xue, A.G., Marrett, K., et al. (2021). Expansion sequencing: spatially precise in situ transcriptomics in intact biological systems. *Science* **371**, eaax2656. <https://doi.org/10.1126/science.aax2656>.
- Bachmann, S., and Oberbäumer, I. (1998). Structural and molecular dissection of the juxtaglomerular apparatus: new aspects for the role of nitric oxide. *Kidney Int. Suppl.* **67**, S29–S33.
- Carlberg, K., Korotkova, M., Larsson, L., Catrina, A.I., Ståhl, P.L., and Malmström, V. (2019). Exploring inflammatory signatures in arthritic joint biopsies with spatial transcriptomics. *Sci. Rep.* **9**, 18975.
- Chen, H., Murray, E., Laumas, A., Li, J., Nie, X., Hotaling, J., Guo, J., Cairns, B.R., Macosko, E.Z., Cheng, C.Y., and Chen, F. (2021a). Dissecting mammalian spermatogenesis using spatial transcriptomics. *Cell Rep.* **37**, 109915. <https://doi.org/10.1101/2020.10.17.343335>.
- Chen, L., Chou, C.-L., and Knepper, M.A. (2021b). Targeted single-cell RNA-seq identifies minority cell types of kidney distal nephron. *J. Am. Soc. Nephrol.* <https://doi.org/10.1681/ASN.2020101407>.
- Chen, W.-T., Lu, A., Craessaerts, K., Pavie, B., Sala Frigerio, C., Corthout, N., Qian, X., Laláková, J., Kühnemund, M., Voytyuk, I., et al. (2020). Spatial transcriptomics and in situ sequencing to study Alzheimer's disease. *Cell* **182**, 976–991.e19.
- Chen, Z., Zhang, T., Mao, K., Shao, X., Xu, Y., Zhu, M., Zhou, H., Wang, Q., Li, Z., Xie, Y., et al. (2021c). A single-cell survey of the human glomerulonephritis. *J. Cell. Mol. Med.* <https://doi.org/10.1111/jcmm.16407>.
- Choi, H.M.T., Schwarzkopf, M., Fornace, M.E., Acharya, A., Artavanis, G., Stegmaier, J., Cunha, A., and Pierce, N.A. (2018). Third-generation hybridization chain reaction: multiplexed, quantitative, sensitive, versatile, robust. *Development* **145**, dev165753. <https://doi.org/10.1242/dev.165753>.
- Chuang, P.Y., and He, J.C. (2009). Signaling in regulation of podocyte phenotypes. *Nephron Physiol.* **111**, 9–15. <https://doi.org/10.1159/000191075>.
- Clark, A.F., Sharp, M.G., Morley, S.D., Fleming, S., Peters, J., and Mullins, J.J. (1997). Renin-1 is essential for normal renal juxtaglomerular cell granulation and macula densa morphology. *J. Biol. Chem.* **272**, 18185–18190.
- Clark, A.R., Marshall, J., Zhou, Y., Montesinos, M.S., Chen, H., Nguyen, L., Chen, F., and Greka, A. (2022). Single-cell transcriptomics reveal disrupted kidney filter cell-cell interactions after early and selective podocyte injury. *Am. J. Pathol.* **192**, 281–294.
- Deczkowska, A., Weiner, A., and Amit, I. (2020). The physiology, pathology, and potential therapeutic applications of the TREM2 signaling pathway. *Cell* **181**, 1207–1217.
- Devuyt, O., Olinger, E., Weber, S., Eckardt, K.U., Kmoch, S., Rampoldi, L., and Bleyer, A.J. (2019). Autosomal dominant tubulointerstitial kidney disease. *Nat. Rev. Dis. Prim.* **5**, 60.
- Dvela-Levitt, M., Kost-Alimova, M., Emani, M., Kohnert, E., Thompson, R., Sidhom, E.H., Rivadeneira, A., Sahakian, N., Roignot, J., Papagregoriou, G., et al. (2019). Small molecule targets TMED9 and promotes lysosomal degradation to reverse proteinopathy. *Cell* **178**, 521–535.e23.
- Dvela-Levitt, M., Shaw, J.L., and Greka, A. (2021). A rare kidney disease to cure them all? towards mechanism-based therapies for proteinopathies. *Trends Mol. Med.* **27**, 394–409.
- Edgar, R., Domrachev, M., and Lash, A.E. (2002). Gene Expression Omnibus: NCBI gene expression and hybridization array data repository. *Nucleic Acids Res.* **30**, 207–210.
- Elia, I., and Haigis, M.C. (2021). Metabolites and the tumour microenvironment: from cellular mechanisms to systemic metabolism. *Nat. Metab.* **3**, 21–32.
- Ferreira, R.M., Sabo, A.R., Winfree, S., Collins, K.S., Janosevic, D., Gulbranson, C., Cheng, Y.-H., Casbon, L., Barwinska, D., Ferkowicz, M.J., et al. (2021). Integration of spatial transcriptomic and single cell sequencing identifies expression patterns underlying immune and epithelial cell cross-talk in acute kidney injury. Preprint at bioRxiv. <https://doi.org/10.1101/2021.01.19.427258>.
- Garg, P. (2018). A review of podocyte biology. *Am. J. Nephrol.* **47**, 3–13. <https://doi.org/10.1159/000481633>.
- Garreta, R., and Moncecchi, G. (2013). Learning Scikit-Learn: Machine Learning in Python (Packt Publishing Ltd).
- Gibier, J.-B., Swierczewski, T., Csanyi, M., Hemon, B., Glowacki, F., Maboudou, P., Van Seuningen, I., Cauffiez, C., Pottier, N., Aubert, S., et al. (2021). MUC1 mitigates renal injury and inflammation in endotoxin induced acute kidney injury by inhibiting the TLR4-MD2 axis and reducing pro-inflammatory macrophages infiltration. *Shock*. <https://doi.org/10.1097/SHK.0000000000001742>.
- Giebisch, G. (1972). Coupled ion and fluid transport in the kidney. *New Engl. J. Med.* **287**, 913–919.
- Gil, C.L., Hooker, E., and Larrivée, B. (2021). Diabetic kidney disease, endothelial damage, and podocyte-endothelial crosstalk. *Kidney Med.* **3**, 105–115. <https://doi.org/10.1016/j.xkme.2020.10.005>.
- Goltsev, Y., Samusik, N., Kennedy-Darling, J., Bhate, S., Hale, M., Vazquez, G., Black, S., and Nolan, G.P. (2018). Deep profiling of mouse splenic Architecture with CODEX multiplexed imaging. *Cell* **174**, 968–981.e15.
- Gomez, R.A., Chevalier, R.L., Everett, A.D., Elwood, J.P., Peach, M.J., Lynch, K.R., and Carey, R.M. (1990). Recruitment of renin gene-expressing cells in adult rat kidneys. *Am. J. Physiol.* **259** (4 Pt 2), F660–F665.
- Greka, A., and Mundel, P. (2012). Cell biology and pathology of podocytes. *Annu. Rev. Physiol.* **74**, 299–323. <https://doi.org/10.1146/annurev-physiol-020911-153238>.
- Hafemeister, C., and Satija, R. (2019). Normalization and variance stabilization of single-cell RNA-seq data using regularized negative binomial regression. *Genome Biol.* **20**, 296.
- Olde Hanhof, C.J.A., Yousef Yengej, F.A., Rookmaaker, M.B., Verhaar, M.C., van der Wijst, J., and Hoenderop, J.G. (2021). Modeling distal convoluted tubule (Patho)Physiology: an overview of past developments and an outlook toward the future. *Tissue Eng. C Methods* **27**, 200–212. <https://doi.org/10.1089/ten.tec.2020.0345>.
- Harvey, N.L., and Gordon, E.J. (2012). Deciphering the roles of macrophages in developmental and inflammation stimulated lymphangiogenesis. *Vasc. Cell* **4**, 15.
- He, B., Chen, P., Zambrano, S., Dabaghie, D., Hu, Y., Möller-Hackbarth, K., Unnersjö-Jess, D., Korkut, G.G., Charrin, E., Jeansson, M., et al. (2021). Single-cell RNA sequencing reveals the mesangial identity and species diversity of glomerular cell transcriptomes. *Nat. Commun.* **12**, 2141.

- Hudkins, K.L., Pichaiwong, W., Wietcha, T., Kowalewska, J., Banas, M.C., Spencer, M.W., Mühlfeld, A., Koelling, M., Pippin, J.W., Shankland, S.J., et al. (2010). BTBR Ob/Ob mutant mice model progressive diabetic nephropathy. *J. Am. Soc. Nephrol. JASN* 21, 1533–1542.
- Jaitin, D.A., Adlung, L., Thaiss, C.A., Weiner, A., Li, B., Descamps, H., Lundgren, P., Bleriot, C., Liu, Z., Deczkowska, A., et al. (2019). Lipid-associated macrophages control metabolic homeostasis in a Trem2-dependent manner. *Cell* 178, 686–698.e14. <https://doi.org/10.1016/j.cell.2019.05.054>.
- Karagöz, G.E., Acosta-Alvear, D., and Walter, P. (2019). The unfolded protein response: detecting and responding to fluctuations in the protein-folding capacity of the endoplasmic reticulum. *Cold Spring Harbor Perspect. Biol.* 11, a033886. <https://doi.org/10.1101/cshperspect.a033886>.
- Kaur, H., and Advani, A. (2021). The study of single cells in diabetic kidney disease. *J. Nephrol.* <https://doi.org/10.1007/s40620-020-00964-1>.
- Kishi, J.Y., Lapan, S.W., Beliveau, B.J., West, E.R., Zhu, A., Sasaki, H.M., Saka, S.K., Wang, Y., Cepko, C.L., and Yin, P. (2019). SABER amplifies FISH: enhanced multiplexed imaging of RNA and DNA in cells and tissues. *Nat. Methods* 16, 533–544.
- Kosovic, I., Filipovic, N., Benzon, B., Bocina, I., Glavina Durdov, M., Vukojevic, K., Saraga, M., and Saraga-Babic, M. (2020). Connexin signaling in the juxtaglomerular apparatus (JGA) of developing, postnatal healthy and nephrotic human kidneys. *Int. J. Mol. Sci.* 21, 8349. <https://doi.org/10.3390/ijms21218349>.
- Kramann, R., and Menzel, S. (2021). Mouse models of kidney fibrosis. *Methods Mol. Biol.* 2299, 323–338.
- Kuppe, C., Ibrahim, M.M., Kranz, J., Zhang, X., Ziegler, S., Perales-Patón, J., Jansen, J., Reimer, K.C., Smith, J.R., Dobie, R., et al. (2021). Decoding myofibroblast origins in human kidney fibrosis. *Nature* 589, 281–286.
- Lake, B.B., Chen, S., Hoshi, M., Plongthongkum, N., Salamon, D., Knoten, A., Vijayan, A., Venkatesh, R., Kim, E.H., Gao, D., et al. (2019). A single-nucleus RNA-sequencing pipeline to decipher the molecular anatomy and pathophysiology of human kidneys. *Nat. Commun.* 10, 2832.
- Lake, B.B., Lake, B.B., Menon, R., Winfree, S., Hu, Q., Ferreira, R.M., Kalhor, K., Barwinska, D., Otto, E.A., Ferkowicz, M., et al. (2021). An atlas of healthy and injured cell states and niches in the human kidney. Preprint at [bioRxiv. https://doi.org/10.1101/2021.07.28.454201](https://doi.org/10.1101/2021.07.28.454201).
- Lein, E., Borm, L.E., and Linnarsson, S. (2017). The promise of spatial transcriptomics for neuroscience in the era of molecular cell typing. *Science* 358, 64–69.
- Lim, H.Y., Lim, S.Y., Tan, C.K., Thiam, C.H., Goh, C.C., Carbajo, D., Chew, S.H.S., See, P., Chakarov, S., Wang, X.N., et al. (2018). Hyaluronan receptor LYVE-1-expressing macrophages maintain arterial tone through hyaluronan-mediated regulation of smooth muscle cell collagen. *Immunity* 49, 1191.
- Lin, Y.-C., Chang, Y.H., Yang, S.Y., Wu, K.D., and Chu, T.S. (2018). Update of pathophysiology and management of diabetic kidney disease. *J. Formos. Med. Assoc.* 117, 662–675.
- Lipson, K.E., Wong, C., Teng, Y., and Spong, S. (2012). CTGF is a central mediator of tissue remodeling and fibrosis and its inhibition can reverse the process of fibrosis. *Fibrogenesis Tissue Repair* 5 (Suppl 1), S24.
- Martini, A.G., and Danser, A.H.J. (2017). Juxtaglomerular cell phenotypic plasticity. *High Blood Press. Cardiovasc. Prev.* 24, 231–242.
- May, C.J., Saleem, M., and Welsh, G.I. (2014). Podocyte dedifferentiation: a specialized process for a specialized cell. *Front. Endocrinol.* 5, 148.
- McInnes, L., Healy, J., Saul, N., and Grossberger, L. (2018). UMAP: uniform manifold approximation and projection. *J. Open Source Softw.* 3, 861. <https://doi.org/10.21105/joss.00861>.
- McInnes, L., Healy, J., and Astels, S. (2017). hdbscan: hierarchical density based clustering. *J. Open Source Softw.* 2, 205. <https://doi.org/10.21105/joss.00205>.
- Melo Ferreira, R., Sabo, A.R., Winfree, S., Collins, K.S., Janosevic, D., Gulbranson, C.J., Cheng, Y.H., Casbon, L., Barwinska, D., Ferkowicz, M.J., et al. (2021). Integration of spatial and single cell transcriptomics localizes epithelial-immune cross-talk in kidney injury. *JCI Insight.* <https://doi.org/10.1172/jci.insight.147703>.
- Meng, Y., Cai, K., Zhao, J., Huang, K., Ma, X., Song, J., and Liu, Y. (2021). Transcriptional profiling reveals kidney neutrophil heterogeneity in both healthy people and ccRCC patients. *J. Immunol. Res.* 2021, 5598627.
- Menon, R., Otto, E.A., Hoover, P., Eddy, S., Mariani, L., Godfrey, B., Berthier, C.C., Eichinger, F., Subramanian, L., Harder, J., et al. (2020). Single cell transcriptomics identifies focal segmental glomerulosclerosis remission endothelial biomarker. *JCI Insight* 5, e133267. <https://doi.org/10.1172/jci.insight.133267>.
- Miao, Z., Balzer, M.S., Ma, Z., Liu, H., Wu, J., Shrestha, R., Aranyi, T., Kwan, A., Kondo, A., Pontoglio, M., et al. (2021). Single cell regulatory landscape of the mouse kidney highlights cellular differentiation programs and disease targets. *Nat. Commun.* 12, 2277.
- Muhl, L., Genové, G., Leptidis, S., Liu, J., He, L., Mocchi, G., Sun, Y., Gustafsson, S., Buyandelger, B., Chivukula, I.V., et al. (2020). Single-cell analysis uncovers fibroblast heterogeneity and criteria for fibroblast and mural cell identification and discrimination. *Nat. Commun.* 11, 3953.
- Muto, Y., Wilson, P.C., Ledru, N., Wu, H., Dimke, H., Waikar, S.S., and Humphreys, B.D. (2021). Single cell transcriptional and chromatin accessibility profiling redefine cellular heterogeneity in the adult human kidney. *Nat. Commun.* 12, 2190.
- Navarro, J.F., Croteau, D.L., Jurek, A., Andrusivova, Z., Yang, B., Wang, Y., Ogedegbe, B., Riaz, T., Støen, M., Desler, C., et al. (2020). Spatial transcriptomics reveals genes associated with dysregulated mitochondrial functions and stress signaling in Alzheimer disease. *iScience* 23, 101556.
- Noel, T., Wang, Q.S., Greka, A., and Marshall, J.L. (2022). Principles of spatial transcriptomics analysis: a practical walk-through in kidney tissue. *Front. Physiol.* 12, 809346. <https://doi.org/10.3389/fphys.2021.809346>.
- O'Brien, P.D., Hur, J., Hayes, J.M., Backus, C., Sakowski, S.A., and Feldman, E.L. (2015). BTBR ob/ob mice as a novel diabetic neuropathy model: neurological characterization and gene expression analyses. *Neurobiol. Dis.* 73, 348–355. <https://doi.org/10.1016/j.nbd.2014.10.015>.
- O'Brien, P.D., Hur, J., Robell, N.J., Hayes, J.M., Sakowski, S.A., and Feldman, E.L. (2016). Gender-specific differences in diabetic neuropathy in BTBR ob/ob mice. *J. Diabetes Complications* 30, 30–37. <https://doi.org/10.1016/j.jdiacomp.2015.09.018>.
- Olinger, E., Hofmann, P., Kidd, K., Dufour, I., Belge, H., Schaeffer, C., Kipp, A., Bonny, O., Deltas, C., Demoulin, N., et al. (2020). Clinical and genetic spectra of autosomal dominant tubulointerstitial kidney disease due to mutations in UMOD and MUC1. *Kidney Int.* 98, 717–731.
- Park, J., Shrestha, R., Qiu, C., Kondo, A., Huang, S., Werth, M., Li, M., Barasch, J., and Suszták, K. (2018). Single-cell transcriptomics of the mouse kidney reveals potential cellular targets of kidney disease. *Science* 360, 758–763.
- Piret, S.E., Olinger, E., Reed, A.A.C., Nesbit, M.A., Hough, T.A., Bentley, L., Devuyt, O., Cox, R.D., and Thakker, R.V. (2017). A mouse model for inherited renal fibrosis associated with endoplasmic reticulum stress. *Dis. Model. Mech.* 10, 773–786.
- Raghubar, A.M., Pham, D.T., Tan, X., Grice, L.F., Crawford, J., Lam, P.Y., Andersen, S.B., Yoon, S., Ng, M.S.Y., Teoh, S.M., et al. (2020). Spatially resolved transcriptome profiles of mammalian kidneys illustrate the molecular complexity of functional nephron segments, cell-to-cell interactions and genetic variants. Preprint at [bioRxiv. https://doi.org/10.1101/2020.09.29.317917](https://doi.org/10.1101/2020.09.29.317917).
- Ransick, A., Lindström, N.O., Liu, J., Zhu, Q., Guo, J.J., Alvarado, G.F., Kim, A.D., Black, H.G., Kim, J., and McMahon, A.P. (2019). Single-cell profiling reveals sex, lineage, and regional diversity in the mouse kidney. *Dev. Cell* 51, 399–413.e7.
- Rodrigues, S.G., Stickels, R.R., Goeva, A., Martin, C.A., Murray, E., Vanderburg, C.R., Welch, J., Chen, L.M., Chen, F., and Macosko, E.Z. (2019). Slide-seq: a scalable technology for measuring genome-wide expression at high spatial resolution. *Science* 363, 1463–1467.
- Roth, R., Kim, S., Kim, J., and Rhee, S. (2020). Single-cell and spatial transcriptomics approaches of cardiovascular development and disease. *BMB Rep.* 53, 393–399.
- Saviano, A., Henderson, N.C., and Baumert, T.F. (2020). Single-cell genomics and spatial transcriptomics: discovery of novel cell states and cellular interactions in liver physiology and disease biology. *J. Hepatol.* 73, 1219–1230.
- Schroeder, A.W., Sur, S., Rashmi, P., Damm, I., Zarinsefat, A., Kretzler, M., Hodgkin, J., Hartoularos, G., Sigdel, T., Ye, J.C., and Sarwal, M.M. (2020). Novel human kidney cell subsets

identified by Mux-Seq. Preprint at bioRxiv. <https://doi.org/10.1101/2020.03.02.973925>.

Schürch, C.M., Bhate, S.S., Barlow, G.L., Phillips, D.J., Noti, L., Zlobec, I., Chu, P., Black, S., Demeter, J., McIlwain, D.R., et al. (2020). Coordinated cellular neighborhoods orchestrate Antitumoral immunity at the colorectal cancer invasive front. *Cell* **182**, 1341–1359.e19.

Shamam, Y.M., and Hashmi, M.F. (2021). Autosomal Dominant Tubulointerstitial Kidney Disease. In *StatPearls* (StatPearls Publishing).

Sharfuddin, A.A., and Molitoris, B.A. (2011). Pathophysiology of ischemic acute kidney injury. *Nat. Rev. Nephrol.* **7**, 189–200. <https://doi.org/10.1038/nrneph.2011.16>.

Sidhom, E.-H., Kim, C., Kost-Alimova, M., Ting, M.T., Keller, K., Avila-Pacheco, J., Watts, A.J., Vernon, K.A., Marshall, J.L., Reyes-Bricio, E., et al. (2021). Targeting a Braf/Mapk pathway rescues podocyte lipid peroxidation in CoQ-deficiency kidney disease. *J. Clin. Invest.* **131**, e141380. <https://doi.org/10.1172/JCI141380>.

Song, W.M., and Colonna, M. (2018). The identity and function of microglia in neurodegeneration. *Nat. Immunol.* **19**, 1048–1058.

Ståhl, P.L., Salmén, F., Vickovic, S., Lundmark, A., Navarro, J.F., Magnusson, J., Giacomello, S., Asp, M., Westholm, J.O., Huss, M., et al. (2016). Visualization and analysis of gene expression in tissue sections by spatial transcriptomics. *Science* **353**, 78–82.

Stewart, B.J., Ferdinand, J.R., Young, M.D., Mitchell, T.J., Loudon, K.W., Riding, A.M., Richo, N., Frazer, G.L., Staniforth, J.U.L., Vieira Braga, F.A., et al. (2019). Spatiotemporal immune zonation of the human kidney. *Science* **365**, 1461–1466.

Stickels, R.R., Murray, E., Kumar, P., Li, J., Marshall, J.L., Di Bella, D.J., Arlotta, P., Macosko, E.Z., and Chen, F. (2021). Highly sensitive spatial transcriptomics at near-cellular resolution with Slide-seqV2. *Nat. Biotechnol.* **39**, 313–319.

Stuart, T., Butler, A., Hoffman, P., Hafemeister, C., Papalexi, E., Mauck, W.M., Hao, Y., Stoeckius, M., Smibert, P., and Satija, R. (2019). Comprehensive integration of single-cell data. *Cell* **177**, 1888–1902.e21.

Subramanian, A., Vernon, K., Zhou, Y., Marshall, J.L., Alimova, M., Zhang, F., Slyper, M., Waldman, J., Montesinos, M.S., Dionne, D., et al. (2021).

Obesity-instructed TREM2^{high} macrophages identified by comparative analysis of diabetic mouse and human kidney at single cell resolution. Preprint at bioRxiv. <https://doi.org/10.1101/2021.05.30.446342>.

Tang, J., Wysocki, J., Ye, M., Vallés, P.G., Rein, J., Shirazi, M., Bader, M., Gomez, R.A., Sequeira-Lopez, M.S., Afkarian, M., and Batlle, D. (2019a). Urinary renin in patients and mice with diabetic kidney disease. *Hypertension* **74**, 83–94.

Tang, W., Lv, B., Yang, B., Chen, Y., Yuan, F., Ma, L., Chen, S., Zhang, S., and Xia, J. (2019b). TREM2 acts as a tumor suppressor in hepatocellular carcinoma by targeting the PI3K/Akt/β-catenin pathway. *Oncogenesis* **8**, 9.

Tighe, J.R. (1977). The pathology of renal ischaemia. *J. Clin. Pathol. Suppl.* **11**, 114–124. <https://doi.org/10.1136/jcp.s3-11.1.114>.

Turnbull, I.R., Gilfillan, S., Cella, M., Aoshi, T., Miller, M., Piccio, L., Hernandez, M., and Colonna, M. (2006). Cutting edge: TREM-2 attenuates macrophage activation. *J. Immunol.* **177**, 3520–3524.

Walter, P., and Ron, D. (2011). The unfolded protein response: from stress pathway to homeostatic regulation. *Science* **334**, 1081–1086.

Waskom, M. (2021). seaborn: statistical data visualization. *J. Open Source Softw.* **6**, 3021. <https://doi.org/10.21105/joss.03021>.

Wolf, F.A., Angerer, P., and Theis, F.J. (2018). SCANPY: large-scale single-cell gene expression data analysis. *Genome Biol.* **19**, 15.

Wu, H., Uchimura, K., Donnelly, E., Kirita, Y., Morris, S.A., and Humphreys, B.D. (2017). Comparative analysis of kidney organoid and adult human kidney single cell and single nucleus transcriptomes. Preprint at BioRxiv. <https://doi.org/10.1101/232561>.

Wyatt, C.M., Shineski, M., Chertow, G.M., and Bangalore, S. (2016). ISCHEMIA in chronic kidney disease: improving the representation of patients with chronic kidney disease in cardiovascular trials. *Kidney Int.* **89**, 1178–1179. <https://doi.org/10.1016/j.kint.2016.03.012>.

Xia, C., Fan, J., Emanuel, G., Hao, J., and Zhuang, X. (2019a). Spatial transcriptome profiling by MERFISH reveals subcellular RNA compartmentalization and cell cycle-dependent gene expression. *Proc. Natl. Acad. Sci. U S A* **116**, 19490–19499.

Xia, C., Babcock, H.P., Moffitt, J.R., and Zhuang, X. (2019b). Multiplexed detection of RNA using MERFISH and branched DNA amplification. *Sci. Rep.* **9**, 7721. <https://doi.org/10.1038/s41598-019-43943-8>.

Xiong, X., Kuang, H., Ansari, S., Liu, T., Gong, J., Wang, S., Zhao, X.Y., Ji, Y., Li, C., Guo, L., et al. (2019). Landscape of intercellular crosstalk in healthy and NASH liver revealed by single-cell secretome gene analysis. *Mol. Cell* **75**, 644–660.e5.

Yao, J., Oite, T., and Kitamura, M. (2009). Gap junctional intercellular communication in the juxtaglomerular apparatus. *Am. J. Physiol. Renal Physiol.* **296**, F939–F946.

Yokoi, H., Mukoyama, M., Mori, K., Kasahara, M., Suganami, T., Sawai, K., Yoshioka, T., Saito, Y., Ogawa, Y., Kuwabara, T., et al. (2008). Overexpression of connective tissue growth factor in podocytes worsens diabetic nephropathy in mice. *Kidney Int.* **73**, 446–455.

Young, M.D., Mitchell, T.J., Vieira Braga, F.A., Tran, M.G.B., Stewart, B.J., Ferdinand, J.R., Collord, G., Botting, R.A., Popescu, D.M., Loudon, K.W., et al. (2018). Single-cell transcriptomes from human kidneys reveal the cellular identity of renal tumors. *Science* **361**, 594–599.

Yu, S.M.-W., and Bonventre, J.V. (2018). Acute kidney injury and progression of diabetic kidney disease. *Adv. in Chronic Kidney Dis.* **25**, 166–180. <https://doi.org/10.1053/j.ackd.2017.12.005>.

Zhang, Z., Wang, S., Huang, X., Min, W., Sun, H., Liu, W., Garcia, B., and Jevnikar, A.M. (2008). NK cells induce apoptosis in tubular epithelial cells and contribute to renal ischemia-reperfusion injury. *J. Immunol.* **181**, 7489–7498.

Zhu, Z., Zhang, X., Dong, W., Wang, X., He, S., Zhang, H., Wang, X., Wei, R., Chen, Y., Liu, X., and Guo, C. (2020). TREM2 suppresses the proinflammatory response to facilitate PRRSV infection via PI3K/NF-κB signaling. *PLoS Pathog.* **16**, e1008543. <https://doi.org/10.1371/journal.ppat.1008543>.

Zimmerman, K.A., Bentley, M.R., Lever, J.M., Li, Z., Crossman, D.K., Song, C.J., Liu, S., Crowley, M.R., George, J.F., Mrug, M., and Yoder, B.K. (2019). Single-cell RNA sequencing identifies candidate renal resident macrophage gene expression signatures across species. *J. Am. Soc. Nephrol.* **30**, 767–781.

STAR★METHODS

KEY RESOURCES TABLE

REAGENT or RESOURCE	SOURCE	IDENTIFIER
Biological samples		
Human Nephrectomy Biopsies	Astrid Weins, BWH	11, 16, 17, A, 20, 21, 22, 12, 19
Chemicals, peptides, and recombinant proteins		
6xSSC	Life Technologies, Inc.	Cat#15557044
RNAase inhibitor	Takara Bio	Cat#2313B
Maxima RT	Life Technologies, Inc.	Cat# EP0753
10mM dNTP	Life Technologies, Inc.	Cat#4303443
Terra PCR mix	Takara Bio	Cat#639284
Critical commercial assays		
Human HCR	Molecular Instruments	LRP2, CTGF, UMOD, EHD3, NPHS2, C1QB, LYVE1
Mouse HCR	Molecular Instruments	Nphs2, Ren1, Slc12a1, Ehd3, Ctgf, Trem2, Umod, C1qb
Deposited data		
Mouse raw and annotated spatial transcriptomics data	This paper.	GEO: GSE190094
Deidentified human raw spatial transcriptomics data	This paper.	DUOS: DUOS-000138
Deidentified annotated human spatial transcriptomics data	This paper.	https://cellxgene.cziscience.com/collections/8e880741-bf9a-4c8e-9227-934204631d2a .
Visualization of mouse and human spatial transcriptomics data	This paper.	https://cellxgene.cziscience.com/collections/8e880741-bf9a-4c8e-9227-934204631d2a .
Experimental models: Organisms/strains		
BTBR <i>wt/wt</i> , mus musculus	Jackson Laboratory	004824
BTBR <i>ob/ob</i> , mus musculus	Jackson Laboratory	004824
UMOD-WT, mus musculus	Rajesh Thakker, University of Oxford	n/a
UMOD-KI, mus musculus	Rajesh Thakker, University of Oxford	n/a
Oligonucleotides		
Template Switch Oligo (TSO)	IDT	AAGCAGTGGTATCAACGCAGAGTG AATrG+GrG
dnSMRT oligo	IDT	AAGCAGTGGTATCAACGCAGAGTG ANNNGGNNNB
Truseq PCR primer	IDT	CTACGACGCTCTCCGATCT
SMART PCR primer	IDT	AAGCAGTGGTATCAACGCAGAGT
Truseq-P5 hybrid constant oligo	IDT	AATGATACGGCGACCACCGAGA TCTACACTCTTCCCTACACGAC GCTCTCCGATCT
Software and algorithms		
https://github.com/marshalljamie/Kidney-Slide-seq	This paper.	https://doi.org/10.5281/zenodo.6338100
Other		
ImageJ2	NIH	1.53c
CellProfiler	Broad Institute	version 3.1.5

RESOURCE AVAILABILITY

Lead contact

Further information and requests for resources and reagents should be directed to and will be fulfilled by lead contact, Anna Greka (agreka@broadinstitute.org).

Materials availability

This study did not generate any unique reagents.

Data and code availability

All code can be found on github: <https://github.com/marshalljamie/Kidney-Slide-seq>, <https://doi.org/10.5281/zenodo.6338100>.

The mouse data (raw and processed) discussed in this publication have been deposited in NCBI's Gene Expression Omnibus (Edgar et al., 2002) and are accessible through GEO Series accession number GEO: GSE190094 (<https://www.ncbi.nlm.nih.gov/geo/query/acc.cgi?acc=GSE190094>). All data discussed in this publication have been deposited and can be visualized here: <https://cellxgene.cziscience.com/collections/8e880741-bf9a-4c8e-9227-934204631d2a>. Deidentified raw data files for human data can be found here: DUOS dataset ID is DUOS-000138, and is accessible via https://duos.broadinstitute.org/dataset_catalog.

Microscopy data reported in this paper will be shared by the lead contact upon request. Any additional information required to reanalyze the data reported in this paper is available from the lead contact upon request.

EXPERIMENTAL MODEL AND SUBJECT DETAILS

Animals

BTBR *wt/wt* and BTBR *ob/ob* mice were purchased from JAX labs (strain 004824) (Hudkins et al., 2010). Male mice were aged to 13 weeks in the Broad Institute vivarium with alpha dry bedding and acidified water. UMOD-KI mice were transferred to the Broad Institute from the Thakker lab at the University of Oxford (Piret et al., 2017). UMOD-KI heterozygous mice were mated to produce 6 month old WT and UMOD-KI homozygous male progeny used in these studies. All animals were subjected to intracardiac perfusion of PBS to remove blood. Tissues were dissected, mounted in OCT, and flash frozen in liquid nitrogen cooled isopentane for 1 min. Samples were then placed on dry ice until long-term storage in the -80 °C. All procedures performed are IACUC approved on Broad Institute animal protocol # 0061-07-15-1.

Human tissue

All human tissues were obtained from healthy regions of tumor nephrectomy samples on Partners IRB protocol # 2011P002692 at Mass General Brigham (AW). Cortex and medulla samples were collected from each patient and samples were flash frozen in liquid nitrogen prior to storage in the -80 °C.

METHOD DETAILS

Slide-seqV2

Bead synthesis

Bead barcodes were synthesized either by the ChemGenes Corporation or in house on an Akta Oligopilot 10 on one of two polystyrene supports, Agilent PLRP-S-1000A 10µm particles or 10µm custom polystyrene from AMBiotec. Oligonucleotide synthesis was performed as described below. Beads were used with one of the two following sequences: ChemGenes Corporation beads (5'-TTTTTTTTCTACACGACGCTCTCCGATCTJJJJJJJTCTTCAGCGTTCGCCGAGAJJJJJJNNNNNNNNNT30-3') and custom synthesis beads (5'-TTT_PC_GCCGGTAATACGACTCACTATAGGGCTACACGACGCTCTCCGATCTJJJJJJTCTTCAGCGTTCGCCGAGAJJJJJJTCNNNNNNNNNT25-3' (pawpuck3); PC, a photocleavable linker; J, bases generated by split-pool barcoding, such that every oligonucleotide on a given bead has the same J bases; N, bases generated by standard base mixing of a 1:1:1:1 ratio of A, C, T and G, such that every oligonucleotide on a given bead has different N bases; TX, a sequence of X thymidines; V, an A, C or G but not T. Bead synthesis. PLRP-S resin (~10-µm mean particle diameter; Agilent) was functionalized with a non-cleavable linker by ChemGenes. The functionalized beads were then used as a solid support for reverse-direction

phosphoramidite synthesis (5' to 3') on an Akta OligoPilot 10 using a standard solid-phase DNA synthesis protocol. 5'-CE (b-cyanoethyl) phosphoramidites were purchased from Glen Research and were dissolved in anhydrous acetonitrile to obtain a concentration of 0.1M. Successive phosphoramidites were coupled for 5min using 5-benzylmercaptotetrazole (0.30M in acetonitrile) as an activator. Oxidation of the phosphite backbone to a phosphate backbone was achieved using iodine. Failure sequences were capped using acetic anhydride. Dichloroacetic acid was used as a detritylation reagent. For split-pool synthesis cycles, beads were suspended in acetonitrile and divided into four equal portions. These bead aliquots were then placed in four separate synthesis columns and reacted with dG, dC, dT or dA phosphoramidites. After each cycle, beads were pooled, suspended in acetonitrile and aliquoted into four equal portions. The split-pool procedure was repeated 15 times in total (two blocks of eight and seven cycles) to obtain 415 (~10⁹) unique barcode sequences. After synthesis completion, the protecting groups from the nucleobases and phosphate backbone were removed by treating beads with 30% ammonium hydroxide containing 10% diethylamine for 40h at room temperature. The beads were centrifuged, and the supernatant was discarded. Beads were then washed three times with 1% acetone in acetonitrile, three times with water and three times with a buffer consisting of 10mM Tris and 1mM EDTA pH 8.

Puck preparation

Puck preparation was performed as described previously (Stickels et al., 2021). Briefly, beads were pelleted and resuspended in water with 10% DMSO at a concentration between 20,000 and 50,000 beads per μ l. Then, 10 μ l of the resulting solution was pipetted into each position on the gasket. The coverslip gasket filled with beads was centrifuged at 850g for at least 30min at 40°C until the surface was dry.

Puck sequencing

Puck sequencing was performed in a Bioprocess FCS2 flow cell using an RP-1 peristaltic pump (Rainin) and a modular valve positioner (Hamilton MVP). Flow rates between 1ml min⁻¹ and 3ml min⁻¹ were used during sequencing. Imaging was performed using a Nikon Eclipse Ti microscope with a Yokogawa CSU-W1 confocal scanner unit and an Andor Zyla 4.2 Plus camera. Images were acquired using a Nikon Plan Apo \times 10, 0.45-NA objective. After each ligation, images were acquired in the following channels: 488-nm excitation with a 525/36-nm emission filter (MVI, 77074803), 561-nm excitation with a 582/15-nm emission filter (MVI, FF01-582/15-25), 561-nm excitation with a 624/40-nm emission filter (MVI, FF01-624/40-25) and 647-nm excitation with a 705/720-nm emission filter (MVI, 77074329). The final stitched images varied in size depending on the size of the Slide-seq array. For the arrays presented in this work the final stitched images were 6,030 pixels by 6,030 pixels. Pucks were sequenced using a sequencing-by-ligation approach with a SOLiD dibase-encoding and with a monobase-encoding strategy previously described (Rodrigues et al., 2019; Stickels et al., 2021).

This protocol was used for all slide-seq version 2 arrays <https://doi.org/10.17504/protocols.io.bpgzmxjx6> (Stickels et al., 2021). Briefly, 10 μ m sections (Leica, CM1950) were overlaid and melted onto spatial arrays. Seven arrays were collected from four BTBR wt/wt and four BTBR ob/ob mice, one kidney per mouse. Seven arrays were necessary to cover the entire cortex and collect enough glomeruli for analysis. Five arrays were collected for three WT and five UMOD-KI mice, one kidney per mouse. Five arrays ensured coverage of the entire medulla. Two arrays were collected from each human tissue sample, which resulted in two cortex and two medulla arrays per individual.

All reagents were diluted in ultrapure water (Life Technologies, Inc., 10977023). Arrays covered in tissue were then transferred to tubes with 6xSSC (Life Technologies, Inc., 15557044) containing RNAase inhibitor (Takara Bio, 2313B) and incubated for 15min. Arrays were then dipped in 1xRT buffer (Life Technologies, Inc., EP0753) and transferred to RT tubes (Maxima RT: Life Technologies, Inc., EP0753; 10mM dNTP Life Technologies, Inc., 4303443; RNAase inhibitor: Takara Bio, 2313B; 50 μ M Template Switch Oligo: IDT, AAGCAG TGGTATCAACGCAGAGTGAATrG+GrG) for a 30min room temperature incubation. RT tubes were then transferred to 52 °C for a 90min incubation. Proteinase K and tissue clearing solution (Tris-HCl, pH 7.5: Life Technologies, Inc., 15567027; NaCl: American Bioanalytical, AB01915-01000; SDS (w/v): Life Technologies, Inc., 15553027; EDTA: Life Technologies, Inc., 15575020; Proteinase K: New England Biolabs, Inc., P8107S) is then added to the RT tube and the array is incubated at 37°C for 30min. Beads are removed from glass and resuspended in TE-TW (TE buffer: Sigma-Aldrich, Inc., 8910-1L; Tween-20: VWR International, LLC, 100216-360) and subjected to 2 TE-TW washes followed by centrifugation for 2 min at 3000rcf. Beads are then resuspended in Exonuclease I mix (New England Biolabs, Inc., M0293L) and incubate at 37°C for 50min. This is followed by 2 washes in TE-TW, 5min room temperature incubation in 0.1N NaOH (Sigma-Aldrich, Inc.,

SX0607N-6), another TE-TW wash, and incubation in the second strand synthesis buffer (Maxima RT: Life Technologies, Inc., EP0753; 10mM dNTP Life Technologies, Inc., 4303443; dnSMRT oligo: IDT, AAGCAGTGGTATCAACGCAGAGTGANNNGGNNNB; Klenow: New England BioLabs, Inc., M0212L) for 1 hour at 37°C. Beads are then subjected to three TE-TW washes and loaded into WTA PCR (100 μM Truseq PCR primer: IDT, CTACGACGCTCTTCCGATCT; 100 μM SMART PCR primer: IDT, AAGCAGTGGTATCAACGCAGAGT; Terra PCR mix: Takara Bio, 639284) with cycling conditions 98°C for 2min; 4 cycles of 98°C for 20sec, 65°C for 45sec, 72°C for 3min; 7 cycles of 98°C for 20sec, 67°C for 20sec, 72°C for 3min; and 72°C for 5min. PCR clean up was performed twice with 0.6x SPRI (AmPureXP: Beckman Coulter, Inc., A63881) on cDNA libraries. Final and cDNA libraries were then QCed on a bioanalyzer (Bioanalyzer High Sensitivity DNA kit: Agilent Technologies, Inc., 5067-4626) and qubit (dsDNA high sensitivity kit: Life Technologies, Inc., Q32854) following manufacturer protocols. Tagmentation of 600pg of cDNA is performed according to Nextera DNA sample preparation manufacturer instructions (Illumina, Inc., FC-131-1096) using a Truseq-P5 hybrid constant oligo (IDT, AATGATACGGCGACCACCGAGATCTACACTCTTTCCCTACACGACGCTCTTCCGATCT) and Nextera N7XX indexing primer (Illumina, Inc., FC-131-1001). Final libraries (4nM) were sequenced on a NovaSeq S2 or S4 with 100-200 million reads per sample at the Genomics Platform at the Broad Institute using read structure Read 1 42bp, Index 1 8bp, Read 2 41-60bp, and Index 2 0bp.

Hybridization chain reaction (HCR)

All HCR v3 reagents (probes, hairpins, and buffers) were purchased from Molecular Technologies (Choi et al., 2018). Thin sections of tissue (10 μm) were mounted in 24-well glass bottom plates (VWR International, LLC, 82050-898) coated with a 1:50 dilution of APTES (Sigma-Aldrich, Inc., 440140). The following solutions were added to the tissue: 10% formalin (VWR International, LLC, 100503-120) for 15min, 2 washes of 1x PBS (ThermoFisher Scientific, AM9625), ice cold 70% EtOH at -20 2 hours to overnight (VWR International, LLC, 76212-358), 3 washes 5x SSCT (ThermoFisher Scientific 15557044, with 0.2% Tween-20), Hybridization buffer (Molecular Technologies) for 10min, probes in Hybridization buffer overnight, 4 15min washes in Wash buffer (Molecular Technologies), 3 washes 5x SSCT, Amplification buffer (Molecular Technologies) for 10min, heat denatured hairpins in Amplification buffer overnight, 3 15min washes in 5x SSCT (DAPI, VWR International, LLC, TCA2412-5MG, 1:10,000, in the second wash), and storage/imaging in 5x SSCT. Imaging was performed on a spinning disk confocal (Yokogawa W1 on Nikon Eclipse Ti) operating NIS-elements AR software. All images acquired were imaged using a Nikon Plan Apo x40 1.15-NA water immersion objective. Image analysis and processing was performed on ImageJ Fiji.

Periodic acid schiff (PAS) staining

10 μm cryosections of flash frozen tissue were mounted onto superfrost plus micro slides (VWR, 48311-703). Tissue was fixed in 10% formalin (VWR International, LLC, 100503-120) for 15min. Slides were then transferred to the Brigham and Womens Pathology Department for PAS staining, which briefly summarized starts with tissue oxidized in 0.5% Periodic Acid solution for 5min, and rinsed 3 times with distilled water. Slides were then placed in Schiff's reagent for 15min and washed with tap water for 5min. Slides were counterstained in Mayer's hematoxylin for 1 min and washed with tap water for 5min and then rinsed with distilled water. Slides were finally dehydrated and mounted using Xylene based mounting media. Imaging was performed on a Zeiss Observer.Z1 microscope using the Zeiss Zen software. Scale bars were added using Fiji ImageJ version 2.1.0/1.53c.

QUANTIFICATION AND STATISTICAL ANALYSIS

Image analysis

Images were first processed using ImageJ2 (National Institutes of Health). Raw ND2 files were background subtracted using the Rolling Ball method (rolling=50 sliding stack). Max intensities of the Z-stack images were then projected, and image channels were split and saved separately. CellProfiler (version 3.1.5, Broad Institute) was then used for cell segmentation based on the fluorescence intensity of DAPI channel and for measuring integrated fluorescence intensity in the rest of the channels (CellProfiler pipeline provided in <https://github.com/marshalljamie/Kidney-Slide-seq>).

Slide-seqV2 cell percentage and HCR validation plots were generated using Graphpad Prism version 9.1.1. Mean and standard deviation are shown and significance was determined by $p < 0.05$ using a Mann-Whitney U-test. Each dot represents an individual mouse or human sample, except in glomerular plots where each dot represents an individual glomerulus collected from 4 BTBR wt/wt or 4 BTBR ob/ob mice or an individual human in healthy, DKD, or injured samples.

Cell type classification

In order to assign a cell type identity to each Slide-seq bead, we used two methods: (1) NMFreg (Non-negative matrix factorization regression) (Rodrigues et al., 2019), and (2) the label transfer method from the R package Seurat (v. 3.0.1) (Stuart et al., 2019). In the former, a reduced gene space of "metagene" markers for each cell type was identified by non-negative matrix factorization of a single cell reference data set (Subramanian et al., 2021), in which cell types were previously annotated. The reduced gene space for mice and humans was comprised of 40 metagenes and 70 metagenes, respectively, from a single cell reference (Subramanian et al., 2021). Every gene expression profile in the Slide-seq query data set was decomposed into a weighted combination of these metagenes by non-negative least squares regression. Each data point in the query was assigned the cell type corresponding to the metagene of maximum weight. Lastly, cell type annotations were eliminated based on the confidence thresholding protocol defined by the NMFreg developers.

With regards to the Seurat V3 label transfer method, we assigned cell type annotations from the same single cell reference data set (Subramanian et al., 2021) to each of our Slide-seq query data sets. Mappings between highly similar gene expression profiles of the single cell reference (Subramanian et al., 2021) and Slide-seq query data points were established using the FindTransferAnchors() function on SCT-normalized data, with 50 PCs derived from the reference data. Cell type annotations of the query data were acquired from TransferData(), using PCA-derived dimensionality reduction on the reference. This function provided vectors with cell type prediction scores for every bead in our Slide-seq arrays. We defined the cell type identity of every bead to be the cell type class corresponding to the maximum prediction loading.

Upon running both methods on our data and generating scatterplots of the resulting cell type loadings, we found that while podocyte identification was comparable between the two methods, Seurat performed better in confidently identifying all other cell types. We concluded that Seurat cell type calls reliably formed structures across 2-D tissue space that we would expect to find in true kidney biology.

Pronounced tubular structures with fewer scattered points were more consistently characteristic of Seurat's PCT, DCT, CD-IC, and CD-PC calls than of NMFreg's calls. Additionally, we consistently found a clear delineation of cortex and medulla regions from Seurat's TAL calls, which was less often true of NMFreg's TAL calls (Figures S2–S7, S11, S12, S17, and S18).

Consequently, we used podocyte classifications defined by NMFreg and classifications output from Seurat for all other cell types.

Segmentation of medulla and cortex regions

While most Slide-seq arrays from human kidney sections spanned either the cortex or medulla, several human arrays and all mouse arrays contained both regions. In order to refine our characterization of the cell type and genetic composition of our tissue to these distinct regions of the kidney, we utilized a segmentation algorithm to separate beads in the cortex from beads in the medulla. We first plotted the coordinates of all beads in an array, colored by their cell type class. Visually, we were able to approximate the boundary separating the cortex from medulla because the former contains exclusively PCTs and podocytes, while the latter contains a higher density of DCT, CD-IC, CD-PC, and TAL cell types. Using the methodology adapted from the Python lasso selector widget (https://matplotlib.org/3.1.0/gallery/widgets/lasso_selector_demo_sgskip.html), we were able to hand-draw on these plots our proposed boundary, and in response, the program returned the bead coordinates both within and outside this border.

Cell type curation

While many of the cell types formed dense structural patterns that aligned with the known histology of structures found in kidney tissue, we found relatively isolated instances of cell type calls. We sought to remove these uncertain cell type calls from our analysis. Here, we used a custom method utilizing K-nearest neighbors (KNN). First, we isolated marker beads for each structure, whether that be beads having a certain cell type label or expression of a marker gene, labeling these 1, and labeled all other beads 0. Next, from the Python package scikit-learn (v. 0.23.1) (Garreta and Moncecchi, 2013), we generated the KNN adjacency matrix based on the coordinates of all beads with the function NearestNeighbors(), using the ball tree algorithm and user-specified k. We then filtered all marker beads with fewer than a threshold number of 1-labeled neighbors. Lastly, we added back in any nearest neighbors of our isolated beads having a label

of 1. The motivation here was that marker beads occurring along the edge of structures may be filtered out because their composition of surrounding 0-labeled neighbors is too high.

The number of *k*-nearest neighbors we allowed the algorithm to search for, and the threshold number of neighbors used to filter out points were chosen by trial and error in order to maintain a clean boundary around the known biological structures of each cell type.

Glomerulus, GC, and MD detection

Because podocytes are known to be solely contained within glomeruli, and glomeruli have a circular shape in 2-D tissue space, we used our KNN-filtration method on podocyte-annotated beads. We chose parameters that maintained these circular structures, while throwing out spurious, isolated points (Figure S53). We then assigned other glomerulus-specific cell types, including mesangial cells and endothelial cells, to these regions containing podocytes. To do so, we computed the circular area of each glomerulus defined by its approximate center and radius. The centers were defined as the cluster centers of curated podocyte coordinates output by `cluster.KMeans()` from the Python package `scikit-learn`. Here, *K* was determined by the number of podocyte clusters visualized in a scatter plot of podocyte coordinates. We approximated the radius of each glomerulus to be the maximum of the distances between all podocytes in a cluster and its cluster center. We then assigned instances of endothelial and mesangial-annotated beads to a podocyte cluster if their coordinates occurred within the circle defined by its radius and center (Figure S60).

GC clusters were identified by running KNN-filtration on all beads expressing *Ren1*, or *REN*, with parameters chosen to isolate elliptical, dense groupings of these points. Although we know that GC cluster near glomeruli, our curated granular cell regions disagreed with this assumption. Therefore, we hand-selected GC clusters that occurred within 250 pixels to a curated glomerulus (Figure S54). Approximately 39% of GC clusters met this criterion.

In order to identify MD structures, we iterated through several filtration steps. First, we ran our KNN-filtration method on TAL, glomerulus, and granular cell-annotated beads, aiming to hone in on any TAL-annotated beads that occur near clusters of glomerulus-specific cells or GC, whether they themselves occur in a dense cluster or not. We then eliminated any of our filtered TAL-annotated beads that expressed the gene *Slc12a3* - a gene characteristic of TAL, but not MD structures. Lastly, in mice we hand-filtered the remaining beads based on the expression of *Ptger3/PTGER3*, *Klf6/KLF6*, and *Nos1/NOS1*, or vicinity to either a glomerulus or granular cell structure (within 250 pixels) (Figure S55). Ultimately, we selected approximately 22% of the MD structures curated with KNN.

Lastly, we assigned unique cell type labels to the beads having more than one label, with the following criteria. Amongst beads classified as both GC and glomerulus-specific cells, we found that the overlapping beads on average had higher expression of *Ren1* than the rest of the granular cell population (Figure S52). As a result, overlapping beads maintained their glomerulus cell type assignments. Beads classified as both GC and MD cells were assigned to the group in which they had the higher gene expression marker.

PCT, DCT, and CD-PC detection

We curated PCT, DCT, and CD-PC-annotated beads in a similar manner. Polygons encapsulating glomeruli, granular cell clusters, and MD clusters were identified with $\alpha = 0.01$, and all instances of curated CD-IC, CD-PC, DCT, and PCT beads were removed from their areas. On calls of DCT and CD-PC in the cortex and medulla separately and all PCT, we ran our KNN-filtration method, selecting parameters that maintained beads contained within tubule structures. Additional filtering was done with the Python package `alphashape` (v. 1.0.2) (<https://alphashape.readthedocs.io/en/latest/>), which output a polygon encapsulating most of the beads of the cell type of interest. All beads outside of the `alphashape` were filtered. Remaining PCT beads within our proposed medulla region of each array were removed (Figures S56–S58).

CD-IC detection

We first combined CD-A-IC and CD-B-IC cell calls and called them CD-IC. Because it is possible to find singular CD-IC beads that occur within CD-PC tubular structures, CD-IC isolation was done by concatenating CD-IC beads with curated CD-PC beads in the cortex and medulla separately, and running KNN-filtration. Following this step, we aimed to remove remaining CD-IC beads that occurred within dense clusters

outside of CD-PC tubules. We further filtered any instances of CD-IC beads that were located further than a distance of 100 pixels from the polygon surrounding CD-PC tubules using the `distance()` method from the Python package `Shapely` (v. 1.7.0) (<https://github.com/Toblerity/Shapely>) (Figure S59).

Polygons encapsulating glomeruli, granular cell clusters, and MD clusters were identified with $\alpha = 0.05$, and all instances of curated CD-IC, CD-PC, DCT, and PCT beads were removed from their areas. TAL beads were removed only from glomerulus and granular cell areas.

Immune cell, fibroblast, and vSMC detection

Because our human single cell reference dataset (Subramanian et al., 2021) had only an immune cell cluster, we parsed out macrophages from our immune-annotated beads by identifying those that expressed either *C1qa/C1QA* or *C1qb/C1QB* (Zimmerman et al., 2019).

Because fibroblasts, vascular smooth muscle cells, and immune cells do not have a clear underlying structure, we did not use KNN-filtration here.

TAL beads were removed only from glomerulus and granular cell areas.

Spatial outlier detection

Abundant cell types such as PCTs, TAL, and endothelial cells that reach the edges of arrays sometimes spilled over outside of the array area. Because these distant beads are no longer associated with coordinates across tissue space, they were deemed spatial outliers and eliminated from the analysis. Detection of these outliers was accomplished by the anomaly detection algorithm `ensemble.IsolationForest()` from the Python package `scikit-learn`. For every Slide-seq array, all raw coordinates were fed into the isolation forest algorithm, and outliers were thrown out. Lastly, curated beads from each cell type class were merged with the filtered set of coordinates.

Cell type structure assignment

Certain cell types formed discrete, classifiable groupings across arrays. CD-IC, CD-PC, and DCT formed tubular islands, GC and MD cells formed elliptical structures, and mesangial cells, endothelial cells, and podocytes comprised circular glomeruli. Formulating structure aggregates were motivated by two downstream analyses: (1) morphology quantifications and (2) transcriptomic characterizations.

First, we identified individual structures with `cluster.KMeans()`, from the Python package `scikit-learn`, on the coordinates of each curated cell type. With podocytes, mesangial cells, and endothelial cells within glomeruli, GC, and MD cells, K was determined to be the number of dense clusters of points visualized in a scatter plot of curated coordinates. For CD-PC, and DCT, where each cell type comprises a single biological structure, but is characterized by natural partitions, K was determined by a silhouette analysis. Here, we searched for a K that maximizes the difference between minimum average out-of-cluster distances and average within-cluster distances. For every k in $\{2, \dots, \max(\text{number of beads}, 50)\}$, we computed `metrics.silhouette_score()` of `cluster.KMeans(K=k)` from the Python package `scikit-learn`. We ultimately used the K -means clustering results with K being the number of clusters corresponding with the maximum silhouette score. CD-IC beads were assigned to their nearest CD-PC cluster (Figures S34–S51).

Quantifying the morphology of glomeruli

In order to address the hypothesis that glomerular morphology differs between the disease states of kidney tissue, we computed the following morphology metrics for every glomerulus: (1) area, (2) percentage of podocytes, (3) percentage of mesangial cells, and (4) percentage of endothelial cells. In order to compute the area of glomeruli, the convex hull of each glomerulus was found with the Python package `alphashape` (v. 1.0.2), using the function `alphashape()` with $\alpha = 0$. This step returned a convex polygon enclosing all points in every glomerulus, along with an area attribute.

The percentages of podocytes, mesangial cells, and endothelial cells in glomeruli were computed with the following protocol: for every glomerulus, we divided the number of beads classified as the cell type of interest by the total number of beads in the glomerulus. Statistical tests were performed with the Mann-Whitney U-test.

Cell type proportion quantification

In order to address whether there was a significant difference in the cell type composition of kidneys in diseased versus wild-type kidney tissue, we computed the proportion of every cell type in the medulla, cortex, and whole kidney in each of our arrays. That is, for every cell type in every region, we divided the number of beads classified as this cell type by the total number of beads in the region of interest or entire array. We then compared these quantifications between UMOD-KI and WT mice, BTBR *ob/ob* and BTBR *wt/wt* mice, and the healthy, DKD, and injured humans. Statistical tests were performed with the Mann-Whitney U-test (Figures S13, S19, S32, and S33).

Transcriptomic data preprocessing

We conducted quality control by computing the number of genes and UMIs per array and UMIs per cell type were quantified (Figures S30 and S31). Prior to running our transcriptomic analyses, we applied normalization and batch effect removal methods to our data, all done using the R package Seurat. In order to account for sequencing depth per bead, we normalized our data using the `SCTransform()` function (Hafemeister and Satija, 2019) on each array. Next, we combined the transcriptomic data in arrays with genotypes or disease states we planned on comparing (e.g., BTBR *wt/wt* and BTBR *ob/ob* mice, WT and UMOD-KI mice, and all humans) into a single data matrix. We ran `SelectIntegrationFeatures()` to find the top 3000 consistently variable features in the `sctransform` data across all arrays in each comparison grouping. `SCTransform()` was then run across all the data in each group at once, this time using the shared variable feature space discovered in the previous step.

In order to remove batch effects, within each genotype or disease state grouping of mice and humans, we searched for differentially expressed genes across batches. We used the function `FindAllMarkers()` with the negative binomial test on the raw counts, filtering for genes characterized by a log fold-change of at least 0.05 and occurring in a minimum fraction of 0.05 of the beads in each of the batch groups under comparison. The union of the sets of batch markers derived from disease states that we intended on comparing downstream were removed from the data (Figures S16, S21 and S22).

Disease state clustering and differential expression analysis

With regards to glomerulus-specific cell types, DCT, CD-IC, and CD-PC, where we had clusters of cells forming small, discrete structures, we decided to cluster on the structures rather than cells. Because Slide-seq beads don't always capture mRNA purely from a single cell type, we reasoned that in smaller structures, surrounded by a mixture of other cell types, edge beads would be prone to picking up mRNA from external cell types. To remove some of this noise, we averaged the `sctransform` residuals of the gene expression profiles of beads belonging to each of our previously-defined structures. Gene profiles consisting of `sctransform` residuals of cell types that did not form these smaller, discrete structures, such as TAL, vSMC, fibroblasts, macrophages, and other immune cells were not aggregated in this way.

For dimensionality reduction, we performed uniform manifold approximation and reduction (UMAP) with the Python package `umap-learn` (v. 0.4.6) (McInnes et al., 2018). We chose the clustering algorithm that best fit the biological labels of our data in UMAP-space: `hdbscan` (v. 0.8.26) (McInnes et al., 2017) in the cases where we clustered on cell type aggregates, and `cluster.SpectralClustering()` from `scikit-learn` in the cases where we clustered on the gene expression profiles of individual beads.

Clusters were assigned a disease status based on the composition of points contained within them. That is, if a cluster contained > 70% structure aggregates or beads coming from diseased arrays, all data points within it were labeled as diseased (Figures S16, S21 and S22).

Differential expression across clusters was performed with the function `scanpy.tl.rank_genes_groups()` from the Python package `scanpy` (Wolf et al., 2018), using the Wilcoxon rank-sum test and filtering for the top 100 differentially expressed genes in each cluster. Genes were called differentially expressed if their adjusted p-value, computed with the Benjamini-Hochberg correction method, fell below 0.05. For each DE gene, the average log fold-change was computed from the `sctransform` corrected counts, defined as the log₁₀ transform of the difference in the average expression of the gene between the two clusters, added by one.

Macrophage–Cell Neighbor Analysis and Statistics

In order to explore cell neighborhoods and cell-cell interactions between macrophages and other cell types, we used a custom analysis. For every macrophage bead of interest, we looked at all of its neighbors

within a radius of 25 pixels using the function `neighbors.radius_neighbors_graph()` from the Python package `scikit-learn`. For every array, we were then able to compute the spatial interaction of a cell type, A, with a cell type, B, as the number of times A is a neighbor of B, normalized to the square-root of the product of the total number of cells A and total number of cells B. This normalization accounted for overall frequency of each cell type and all possible interactions between the two cell types of interest across arrays.

In order to see if the cell-cell interaction neighborhoods were unique, we controlled for all other cell types. For humans, to determine if interactions between *LYVE1+* macrophages versus their newly defined neighbors were unique, we also looked at cell interaction frequencies of *all* macrophages versus *all other cell types* in the medulla. For mice, to determine if interactions between all macrophages and their newly defined neighbors in the medulla were unique, we also looked at cell interaction frequencies of all macrophages versus all other cell types in mouse cortex.

In order to define differences between healthy and injured tissue, we performed further statistical analysis. For humans, cell type interaction frequencies for all *LYVE1+* macrophages versus all cells, and all macrophages versus all cells were compared across healthy and injured medulla. For mice, cell type interaction frequencies for all macrophages versus all cells were compared across the cortex and medulla in UMOD-KI and UMOD-WT mice. The statistical test used to compare interaction frequencies between healthy and disease tissue was the Mann-Whitney U-test, correcting p-values with the Benjamani-Hochberg method.

These new analyses are now presented as dot plots showing relative proportions of cell types normalized across healthy and disease tissue. Specifically, dot plots were generated showing the interaction frequency of macrophages (all macrophages or a subset, i.e. *LYVE1+*) versus every other cell type in the tissue array. The color of the dots indicates the intensity of the interaction (red, increased; blue, decreased interaction). The size of the dots indicates the adjusted p-value for cell-cell interactions and significance is shown by a black outline around the dot (adjusted p-value < 0.05). Cell types not represented in the dot plot had no interactions with macrophages of interest.

Glomerulus and granular cell distance computation

In order to analyze the spatial relationship between glomeruli and GC, we aimed to compare the distances between the two structures across genotypes in mice and used two different methods. In the first method, using the previously-computed K-means cluster centers, we computed the Euclidean distances between the cluster centers of all glomeruli and granular cell structures in every array. We then searched for glomerulus-granular cell structure pairs at a minimum distance to each other. Distances were then compared between BTBR *wt/wt* and BTBR *ob/ob* mice. In the second method, we computed the minimum Euclidean distances between the edges of the convex hulls encompassing glomeruli and granular cell structures using the `distance()` method from the Python package `Shapely`. The distribution of distances was then compared between arrays of BTBR *wt/wt* and BTBR *ob/ob* mice. Statistical tests were performed with the Mann-Whitney U-test.

UPR pathway analysis in UMOD mice

A list of UPR-specific genes was acquired from [Adamson et al., 2016](#) ([Adamson et al., 2016](#)). Genes appearing in < 50% of the UMOD-KI and WT transcriptomic data matrices were removed. The select set of genes were then subset from the raw transcriptomic data of each of our UMOD-KI and WT mouse arrays and all data was combined into a single matrix. Beads expressing at least one feature of the UPR signature were maintained for the rest of the analysis. In order to account for sequencing depth of each bead, we ran the `SCTransform()` method from the R package `Seurat`. Next, we averaged the `sctransform`-normalized gene expression profiles of beads classified as being TAL in the medulla, per mouse. Differential expression was performed across aggregated gene expression profiles of TAL-medulla beads in UMOD-KI and WT mice. Here, we used the function `scanpy.tl.rank_genes_groups()` from the Python package `scanpy` with the Wilcoxon rank-sum test. We called genes differentially expressed if their adjusted p-value, computed with the Benjamani-Hochberg method, fell below 0.05. In order to visualize these gene expression differences across UMOD-KI and WT mice, we used the method `clustermap()` from the python package `seaborn` (v. 0.10.1) ([Waskom, 2021](#)), performing min-max normalization for every gene. The same protocol was followed in order to conduct DE across TAL-cortex and PCT beads in UMOD-KI and WT mice as negative controls.