



Publisher Correction: Transcriptome-wide association study of coronary artery disease identifies novel susceptibility genes

Ling Li^{1,2,3} · Zhifen Chen^{1,3} · Moritz von Scheidt^{1,3} · Shuangyue Li^{1,3} · Andrea Steiner^{1,3} · Ulrich Güldener^{1,3} · Simon Koplev⁴ · Angela Ma⁴ · Ke Hao⁴ · Calvin Pan⁵ · Aldons J. Lusis^{5,6,7} · Shichao Pang^{1,3} · Thorsten Kessler^{1,3,7} · Raili Ermel⁸ · Katyayani Sukhvasi⁸ · Arno Ruusalepp^{8,9} · Julien Gagneur² · Jeanette Erdmann^{10,11} · Jason C. Kovacic^{12,13,14} · Johan L. M. Björkegren^{4,9,15} · Heribert Schunkert^{1,3}

Published online: 5 April 2022
© The Author(s) 2022

Publisher Correction:
Basic Research in Cardiology (2022) 117:6
<https://doi.org/10.1007/s00395-022-00917-8>

The original version of this article unfortunately contained a mistake. The presentation of Fig. 6 was incorrect. Please accept the inconvenience this may have caused.

The original article can be found online at <https://doi.org/10.1007/s00395-022-00917-8>.

✉ Heribert Schunkert
schunkert@dhm.mhn.de

¹ Department of Cardiology, German Heart Center Munich, Technical University Munich, Lazarettstraße 36, 80636 Munich, Germany

² Fakultät für Informatik, Technische Universität München, Munich, Germany

³ Deutsches Zentrum für Herz- und Kreislaufforschung (DZHK), Partner Site Munich Heart Alliance, Munich, Germany

⁴ Department of Genetics and Genomic Sciences, Institute of Genomics and Multiscale Biology, Icahn School of Medicine at Mount Sinai, New York, NY 10029-6574, USA

⁵ Department of Human Genetics, David Geffen School of Medicine, University of California, Los Angeles, CA, USA

⁶ Department of Medicine, David Geffen School of Medicine, University of California, Los Angeles, CA, USA

⁷ Department of Microbiology, Immunology and Molecular Genetics, David Geffen School of Medicine, University of California, Los Angeles, CA, USA

⁸ Department of Cardiac Surgery, The Heart Clinic, Tartu University Hospital, Tartu, Estonia

⁹ Clinical Gene Networks AB, Stockholm, Sweden

¹⁰ DZHK (German Research Centre for Cardiovascular Research), Partner Site Hamburg/Lübeck/Kiel, Lübeck, Germany

¹¹ Institute for Cardiogenetics, University of Lübeck, Lübeck, Germany

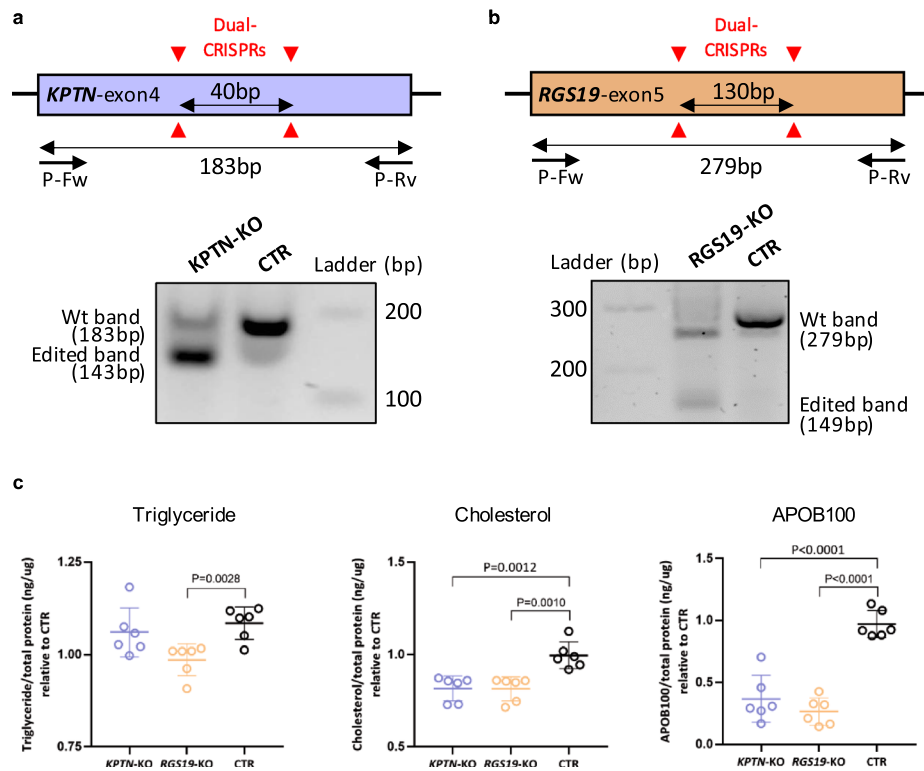
¹² Victor Chang Cardiac Research Institute, Darlinghurst, Australia

¹³ St Vincent's Clinical School, University of New South Wales, Sydney, Australia

¹⁴ Icahn School of Medicine at Mount Sinai, Cardiovascular Research Institute, New York, NY 10029-6574, USA

¹⁵ Department of Medicine, Huddinge, Karolinska Institutet, Karolinska Universitetssjukhuset, Stockholm, Sweden

The corrected Fig. 6 is given below.



The original article has been corrected.

Open Access This article is licensed under a Creative Commons Attribution 4.0 International License, which permits use, sharing, adaptation, distribution and reproduction in any medium or format, as long as you give appropriate credit to the original author(s) and the source, provide a link to the Creative Commons licence, and indicate if changes were made. The images or other third party material in this article are

included in the article's Creative Commons licence, unless indicated otherwise in a credit line to the material. If material is not included in the article's Creative Commons licence and your intended use is not permitted by statutory regulation or exceeds the permitted use, you will need to obtain permission directly from the copyright holder. To view a copy of this licence, visit <http://creativecommons.org/licenses/by/4.0/>.