



OPEN

Effects of combined abiotic stresses on nutrient content of European wheat and implications for nutritional security under climate change

Yamdeu Joseph Hubert Galani^{1,2}, Emilie Marie Øst Hansen³, Ioannis Droutsas⁴, Melvin Holmes¹, Andrew Juan Challinor⁴, Teis Nørgaard Mikkelsen⁵ & Caroline Orfila^{1✉}

Climate change is causing problems for agriculture, but the effect of combined abiotic stresses on crop nutritional quality is not clear. Here we studied the effect of 10 combinations of climatic conditions (temperature, CO₂, O₃ and drought) under controlled growth chamber conditions on the grain yield, protein, and mineral content of 3 wheat varieties. Results show that wheat plants under O₃ exposure alone concentrated +15 to +31% more grain N, Fe, Mg, Mn P and Zn, reduced K by -5%, and C did not change. Ozone in the presence of elevated CO₂ and higher temperature enhanced the content of Fe, Mn, P and Zn by 2–18%. Water-limited chronic O₃ exposure resulted in +9 to +46% higher concentrations of all the minerals, except K. The effect of climate abiotic factors could increase the ability of wheat to meet adult daily dietary requirements by +6% to +12% for protein, Zn and Fe, but decrease those of Mg, Mn and P by -3% to -6%, and K by -62%. The role of wheat in future nutrition security is discussed.

Without action, climate change will impact nutrition through decreased food access and reduced dietary diversity^{1,2}. Modelling studies have suggested that higher atmospheric CO₂ would impact nutritional quality of staples globally, notably impacting protein³, Zn⁴, Fe⁵, and nutrients in general⁶. Wheat (*Triticum aestivum* and *T. durum*) is a widely cultivated crop, crucial to the food and nutrition security of populations worldwide. Global average daily supply of wheat and its products is estimated at 179 g per capita, providing 527 kcal, 15.8 g of protein and 2.4 g of fats⁷. It is consumed in all the continents, Europeans having the largest supply with 298.6 g/day, followed by Oceanians, Asians, and Americans. Africans have the lowest supply, estimated at 130.6 g/day⁸. Consuming 160 g of commercially prepared whole-wheat bread contributes 36% of adult daily protein requirements⁹. Similarly, consuming 200 g/day could meet 76% of Fe, 72–84% of Mg, 78% of Zn, 90% of Mn, >100% of P, and 41% of K adult needs¹⁰. Wheat-based foods provide around 40% of dietary fiber intake and make significant contributions to the intake of B vitamins, Ca, Cu, Fe, Mg, Se and Zn in UK consumers⁷. Any change in the yield or nutrient content of wheat could have a large impact on nutrient intake and dietary health of millions of people.

Human activities such as industrialization and deforestation have led to sustained increases in atmospheric temperature, CO₂ and O₃ levels, as well as decreased availability of water for agriculture. These atmospheric conditions cause physiological stress responses affecting crop performance, grain yield and nutrient accumulation^{11,12}. For instance, high temperature treatments (40/20 vs 25/20 °C day/night) ten days after anthesis reduced grain number, weight, and the content of polysaccharides and proteins in many wheat varieties¹³. Elevated concentration of atmospheric CO₂ (546–586 ppm) lead to lower concentrations of protein, Zn, Fe in C₃ grains such as wheat¹⁴. Högy et al.¹⁵ observed an increase of 1000-grain weight, but a decrease in proteins, amino acids, Fe and Ca when CO₂ concentration was 150 ppm above the ambient value. Similarly, concentrations of grain protein, Fe, Zn, S and Ca were significantly reduced at elevated CO₂ (550 ppm) as compared to the ambient 384 ppm¹⁶.

¹School of Food Science and Nutrition, University of Leeds, Leeds LS2 9JT, UK. ²Section of Natural and Applied Sciences, School of Psychology and Life Sciences, Canterbury Christ Church University, Canterbury CT1 1QU, UK. ³Department of People and Technology, Roskilde University, 4000 Roskilde, Denmark. ⁴School of Earth and Environment, University of Leeds, Leeds LS2 9JT, UK. ⁵Department of Environmental and Resource Engineering, Technical University of Denmark, Bygningstorvet 115, 2800 Kgs, Lyngby, Denmark. ✉email: c.orfila@leeds.ac.uk

Chronic elevated O₃ (25–35 ppb) resulted in lower rubisco enzyme activity, chlorophyll, and photosynthetic rate in *T. aestivum* wheat, and significantly reduced sugar, starch, and protein contents in two wheat varieties¹⁷. A review of 42 experiments performed in Asia, Europe and North America showed that high O₃ has a strong negative effect on 1000-grain weight, and weaker but significant negative effects on starch concentration and volume weight. Conversely, a significant increase of protein and several nutritionally important minerals (K, Mg, Ca, P, Zn, Mn, Cu) was observed, but yields were significantly decreased. Effects on Fe, S and Na were not significant, or results were inconclusive¹⁸. Climate change has led to significant geographical and seasonal redistribution in precipitation and rise in temperature¹⁹. In wheat, water deficit at grain filling stage reduces grain-filling duration and ultimately reduces grain number and size²⁰. Water deficit also reduced grain yield, macro and micronutrient contents in common bean, triticale, and wheat²¹. Severe drought conditions caused a significant reduction in total protein and carbohydrates and a gradual augmentation in total fibers in wheat grains²². Contrarily, moderate drought during grain filling in wheat was found to increase grain protein content, although a slight decrease in grain yield was also observed²³.

Simultaneous combinations of abiotic stresses may not result in additive effects on plant growth and productivity^{24–26}. Wheat grown under higher temperature and CO₂ conditions (700 ppm CO₂ and 3 °C temperature rise) had significantly lower straw and grain yield, particularly due to severe reduction in number of spikes per plant, although supplied with ample fertilization¹¹. Multifactor combination of ambient or elevated CO₂ (385 and 700 ppm), O₃ (20 and 60 ppb) and temperature (19/12 and 24/17 °C) showed a decrease in growth and production in oilseed rape and barley²⁴. In contrast, a large decrease in wheat grain yield (–43.6%) was observed under the additive effect of 50% water deficit stress and elevated O₃ (+20 ppb), while individually applied water deficit stress and elevated O₃ alone reduced grain yield by –19.8% and –17.9% respectively²⁷. Response to abiotic stresses differs not only among crop species^{14,24,28}, but also among crop varieties of the same species. Under elevated O₃, more reduction of grain yield was observed in *T. aestivum* (–15% and –19%) as compared to *T. durum* (–9% and –13%)¹⁷. Similarly, the landrace variety of wheat was more sensitive to O₃ than the modern varieties²⁹. Very little consideration has been given to interaction of O₃ with other abiotic factors on yield and nutrient content of plants. Besides, to our knowledge, no attempts have been made to measure to what extent combined climate change factors will affect the ability of crops, including wheat, to fulfil the nutritional requirements of the population.

We have used a multifactorial, controlled growth chamber experiment with combinations of CO₂ (400 and 700 ppm), temperature (19/12 and 24/17 °C) and different O₃ exposure regimes (5.9–7.2 ppb and episodic or chronic 80 to 100 ppb) on three European wheat spring varieties. For context on how these conditions related to climate change, global CMIP6 projections indicate that by 2081–2100, scenario SSP1-2.6 has a CO₂ concentration of approximately 450 ppm and a temperature increase (relative to 1995–2014) of approximately 1.8 °C; SSP5-8.5 has a CO₂ concentration of approximately 1100 ppm and a temperature increase of approximately 4.4 degrees Celsius, rising to approximately a 5 °C increase by 2100³⁰. We have systematically evaluated the effect of these combinations of abiotic stress conditions on yield, protein and dietary mineral nutrient content, and the interaction between these. We estimated the potential consequences on the nutrient supply from wheat. We discuss potential implications of climate change on nutrition security.

Results

Effect of combined abiotic factors on mineral content of wheat grain. Three European wheat varieties were grown under combinations of abiotic stress factors associated with climate change (see full description and acronyms of treatments in subheading 5.3 in Methods section and in figure footnotes). Analysis of nutrient content of wheat flours from these experiments showed that combinations of abiotic stress conditions did not result in significant changes to C content, a slight reduction in K content and increase in N, Fe, Mg, Mn, P, and Zn. The response varied among the wheat varieties and the treatment combination (Fig. 1). N concentration is a key parameter of grain quality, associated with protein content. N concentration ranged from 1.89 to 1.94 g/100 g dw. In response to the treatments, significantly higher concentrations (between +3.99 and +51.92%) were recorded. The varieties responded differently to each treatment: the highest N values in KWS Bittern (+43.37% and +43.63%) were obtained with treatments CT.O3 and T.EpO3, respectively; in Lantvete it was +50.81% with treatment CT; while in Lennox it was +51.92% with CT.EpO3. In all the varieties, treatment A.EpO3 lead to the lowest N increase. When each climate parameter was considered alone, highest N values were obtained with chronic O₃ treatments, followed by episodic and then normal O₃; N content under high CO₂ treatments were slightly greater than under ambient CO₂; treatments with higher temperature showed higher N content than those with lower temperature. Under presence of O₃ however, high CO₂ equally affects N content irrespective of the O₃ regime, while for ambient CO₂, N content is higher with episodic O₃, and highest with chronic O₃. Similarly, higher temperature has a comparable effect on N content irrespective of the O₃ regime, while the effect of lower temperature is enhanced under episodic O₃, and more enhanced under chronic O₃. Water-limited treatment with KWS Bittern slightly reduced N content by –2.10% to –4.57%, when compared to their respective controls. But when compared to the control treatment (A), significant increase (p < 0.001) of +29.31% and +40.37% were obtained for treatments WLA.O3 and WLCT.O3, respectively. Detailed observations of changes for all the studied minerals are depicted on Fig. 1, Supplementary Figs. 1–8, and data are available in Supplementary Table 1.

Effect of ozone alone, and in combination with other climatic abiotic stress factors. Ozone is one of the most damaging tropospheric air pollutant affecting plant growth and productivity^{31,32} and tropospheric O₃ concentrations have more than doubled since pre-industrial times³³. Wheat is sensitive to elevated O₃ levels, causing differences in grain yields and nutrient content¹⁷. In this study, treatments with O₃ alone did

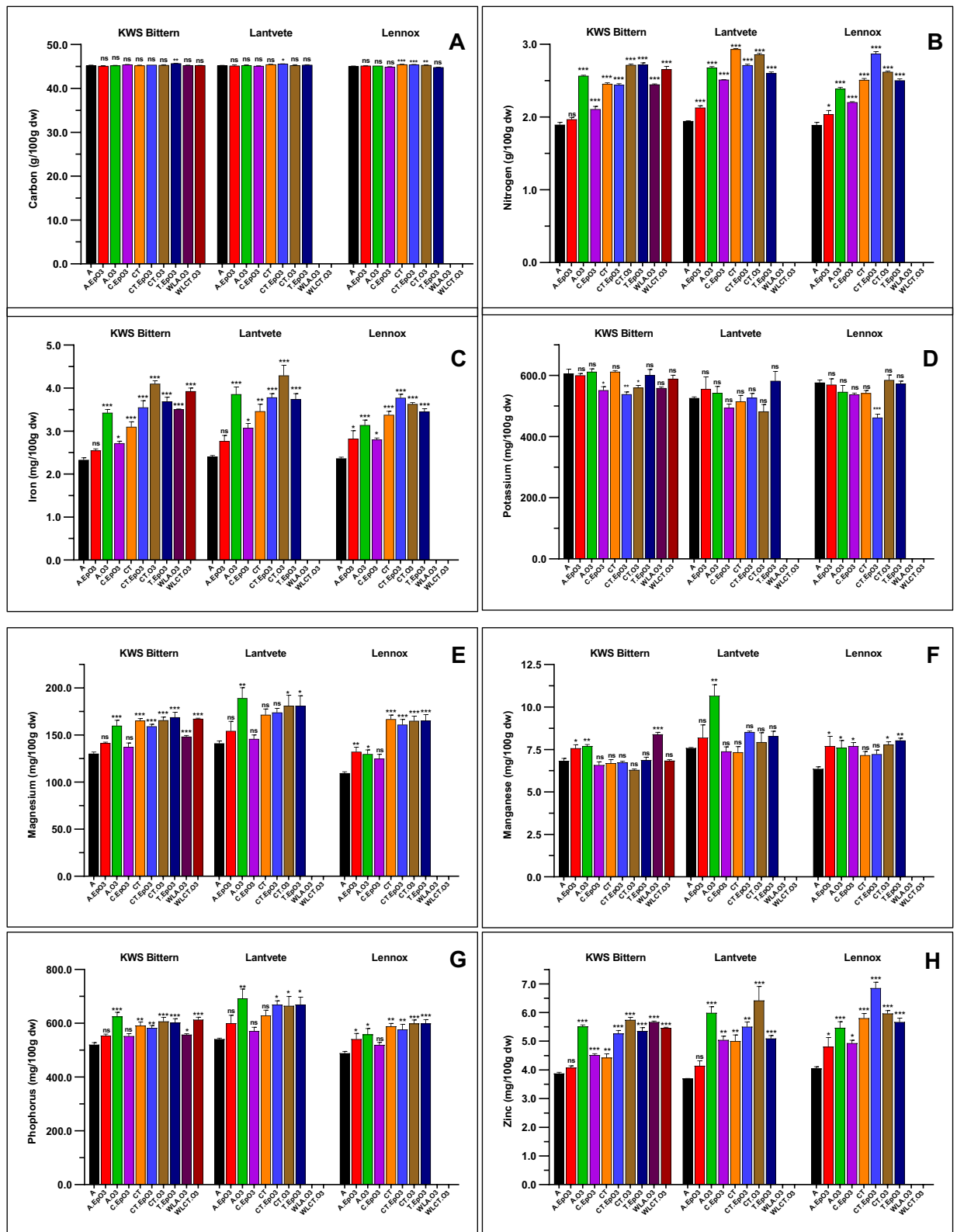


Figure 1. Effect of temperature, CO₂, ozone and water availability on grain mineral content (carbon (A), nitrogen (B), iron (C), potassium (D), magnesium (E), manganese (F), phosphorus (G) and zinc (H)) of three European wheat varieties. Treatments: A = Ambient CO₂, lower temperature settings and no O₃ addition (control). A.EpO₃ = Ambient CO₂, lower temperature settings and episodic O₃ addition. A.O₃ = Ambient CO₂, lower temperature settings and chronic O₃ addition. C.EpO₃ = High CO₂, lower temperature settings and episodic O₃ addition. CT = High CO₂, higher temperature settings, and no O₃ addition. CT.EpO₃ = High CO₂, higher temperature settings and episodic O₃ addition. CT.O₃ = High CO₂, higher temperature settings and chronic O₃ addition. T.EpO₃ = Ambient CO₂, higher temperature and episodic O₃ addition. W.LA.O₃: Ambient CO₂, lower temperature settings and chronic O₃ addition (i.e., A.O₃), in water-limited condition. W.LCT.O₃ = High CO₂, higher temperature settings and chronic O₃ addition (i.e., CT.O₃), in water-limited condition. ns, *, ** and *** mean non-significant, significant at 0.05, 0.01 and 0.001, respectively, Dunnett's test with treatment A as control.

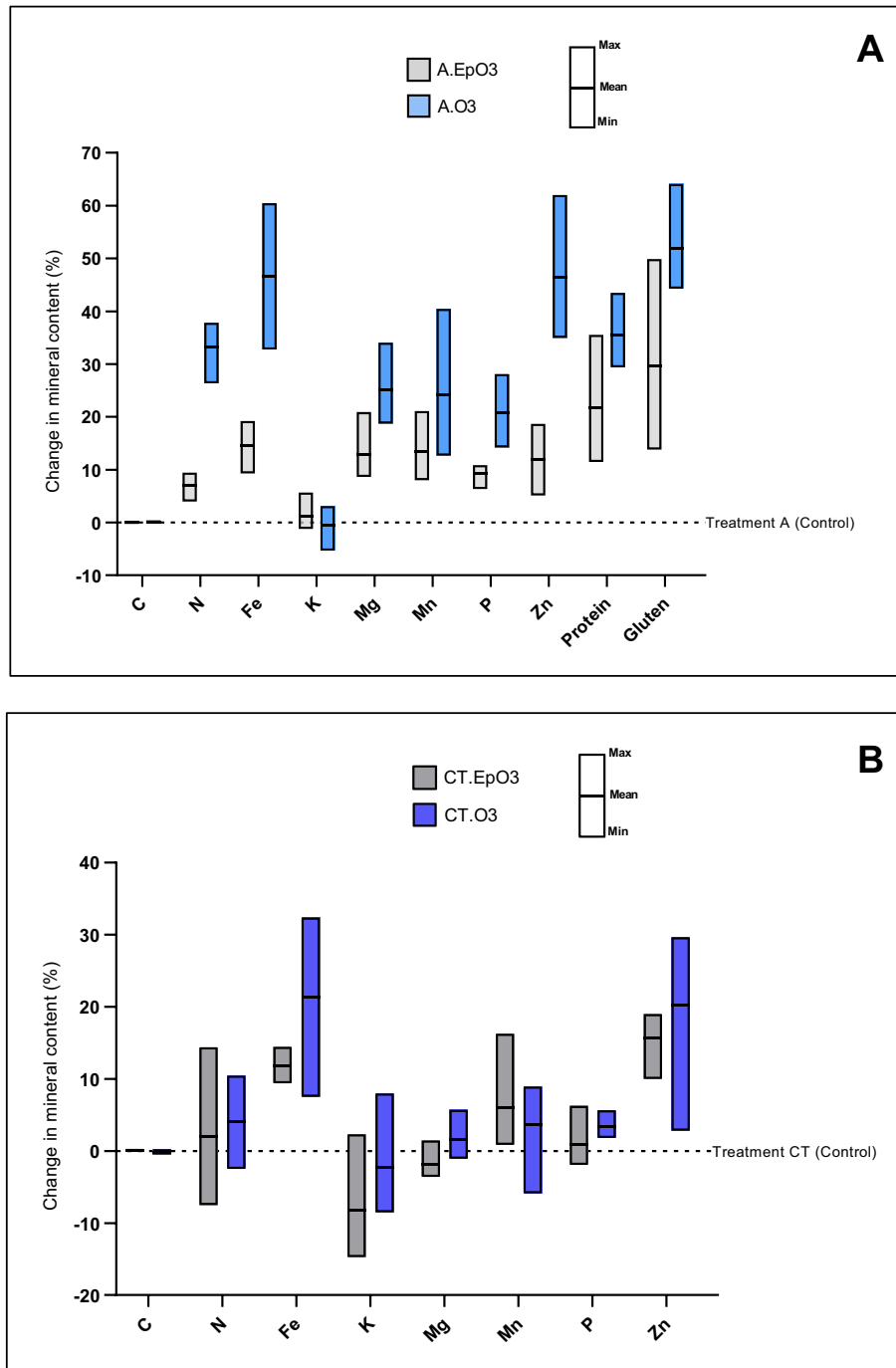


Figure 2. Change of mineral content of three European wheat varieties under effect of ozone alone (A) and combined with high CO₂ and elevated temperature (B). A = Ambient CO₂, lower temperature settings and no O₃ addition (control). A.EpO₃ = Ambient CO₂, lower temperature settings and episodic O₃ addition. A.O₃ = Ambient CO₂, lower temperature settings and chronic O₃ addition. CT = High CO₂, higher temperature settings, and no O₃ addition. CT.EpO₃ = High CO₂, higher temperature settings and episodic O₃ addition. CT.O₃ = High CO₂, higher temperature settings and chronic O₃ addition.

not have any noticeable change on C content, marginally reduced K content, but significantly increased the content of N (mean value for the 3 varieties, treatment A.EpO₃ = +7.10% and treatment A.O₃ = +33.22%), Fe (+14.52% and +46.73%), Mg (+12.94% and +25.24%), Mn (+13.33% and +24.24%), P (+9.29% and +20.85%), Zn (+11.91% and +46.39%), protein (+21.78% and +35.59%), and gluten (+29.73% and +51.91%); chronic O₃ increased the content of the nutrients more than episodic O₃ (Fig. 2A). Comparison of treatments that combine elevated CO₂ and higher temperature with different O₃ regimes in this study (CT vs CT.O₃ and CT.EpO₃) showed that under condition of high CO₂ and temperature, O₃ could significantly increase grain contents of Fe

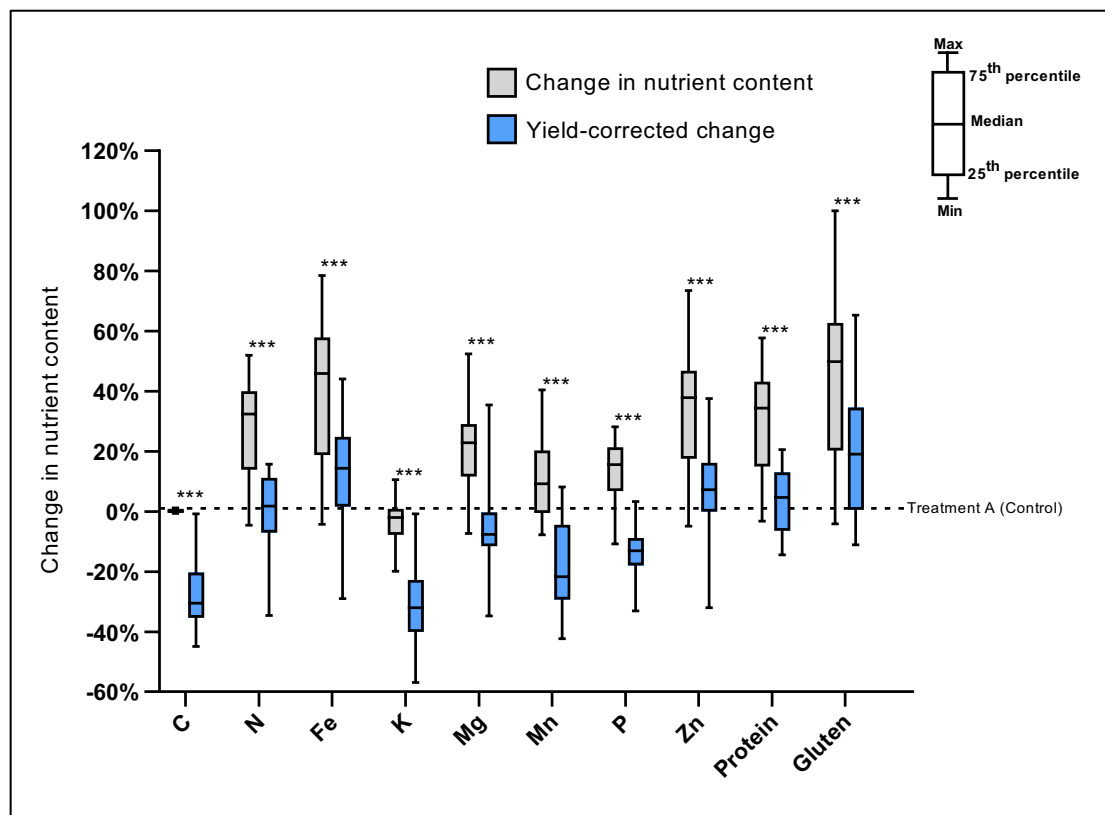


Figure 3. Average percentage change in nutrient content and yield-corrected nutrient content of three European wheat varieties under combined climatic abiotic stress factors, compared to the control. A = Ambient CO₂, lower temperature settings and no O₃ addition (control). ***Indicates significant difference at $p=0.001$ between the normal and the yield-corrected nutrient content, one-tailed pairwise Student's t-Test.

(mean value for the 3 varieties, treatment CT.EpO3 = +11.86% and treatment CT.O3 = +21.32%), Mn (+6.02% for CT.EpO3), P (+3.37% for CT.O3) and Zn (+15.71% for CT.EpO3 and +20.24% for CT.O3); the effect on the other minerals was not significant; here as well, chronic O₃ exposure was more effective than episodic (Fig. 2B). However, the effect of these combined climatic factors is not additive: comparing Fig. 2A and B, it appears that the effect of O₃ on mineral content of wheat is greater in the presence of ambient CO₂ and lower temperature settings.

Trade-off between grain yield and nutrient content. All treatments caused a decrease in yield²⁹ from -14 to -36% in KWS Bittern, -26 to -46% in Lantvete, and -16 to -37% in Lennox²⁹, the resultant effect on nutrient yield (mass of grain nutrient per unit area) shows a correction towards significantly lower values to various extents, depending on the initial content. The overall impact of abiotic stress treatments on nutrient yield was positive for gluten, Fe, Zn and protein, with an increase of +19.11%, +14.42%, +7.20% and +4.60%, respectively, while the decrease of yield counterbalanced the gain in concentration of the other nutrients, resulting in decrease of K (-32.08%), Mn (-21.65%), P (-13.12%), and Mg (-7.66%) (Fig. 3).

The decline in protein content was significantly higher under future CO₂ conditions in comparison with the same plants grown with present-day CO₂. We modelled the changes in protein under different CO₂ conditions, to understand how it would be influenced by changes in yield. Our results indicate that under present-day CO₂ level, protein content declines by -1.08% for 1 t/ha increase in yield, regardless of other stress conditions (low/high temperature, fully irrigated/water stressed, episodic/chronic exposure to O₃) or the wheat cultivar exposed (Fig. 4). Yield explained a lower percentage of the variance in protein content under high CO₂. Hence, factors that are not related to atmospheric CO₂, such as genotypic differences between the cultivars may become increasingly important for the determination of protein content under future climate change conditions.

Effect of combined abiotic stress factors on the ability of wheat to meet nutrient needs. Using yield-corrected nutrient contents, we estimated the contribution of the global average wheat supply 298.5 g/person/day to the average nutrient requirement of European adults (Fig. 5 and Supplementary Fig. 9). The resulting effect of combined abiotic factors would increase the ability of wheat to meet adult daily dietary requirements by +6% to +12% for protein, Zn and Fe, but decrease those of Mg, Mn, and P by -3% to -6%, and K by -62%.

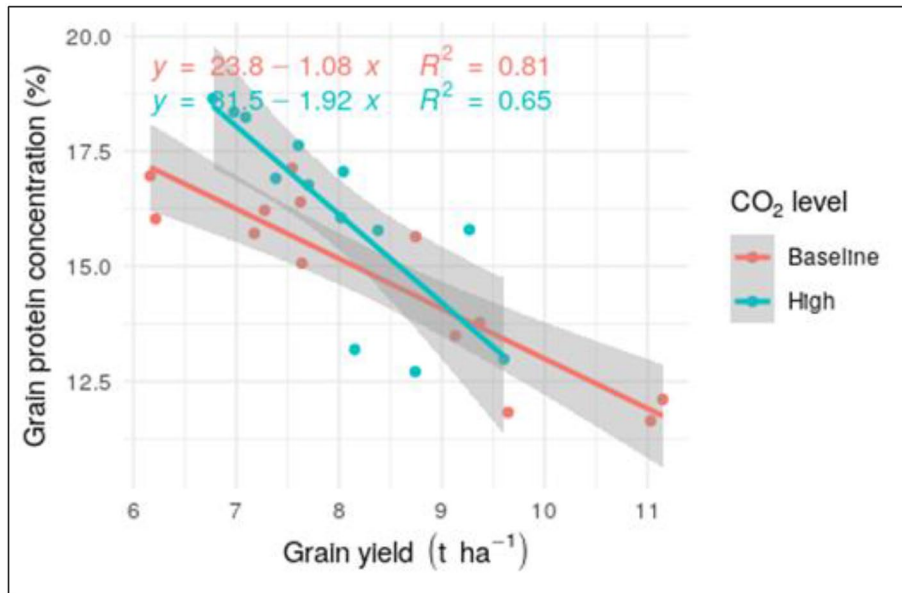


Figure 4. Relationship between grain yield and protein content for spring wheat varieties KWS Bittern, Lennox and Lantvete grown under baseline CO₂ (400 ppm; red points) and high CO₂ level (700 ppm; blue points). Solid red and blue lines are linear regressions fitted against the red and blue points respectively and grey areas are 95% confidence intervals.

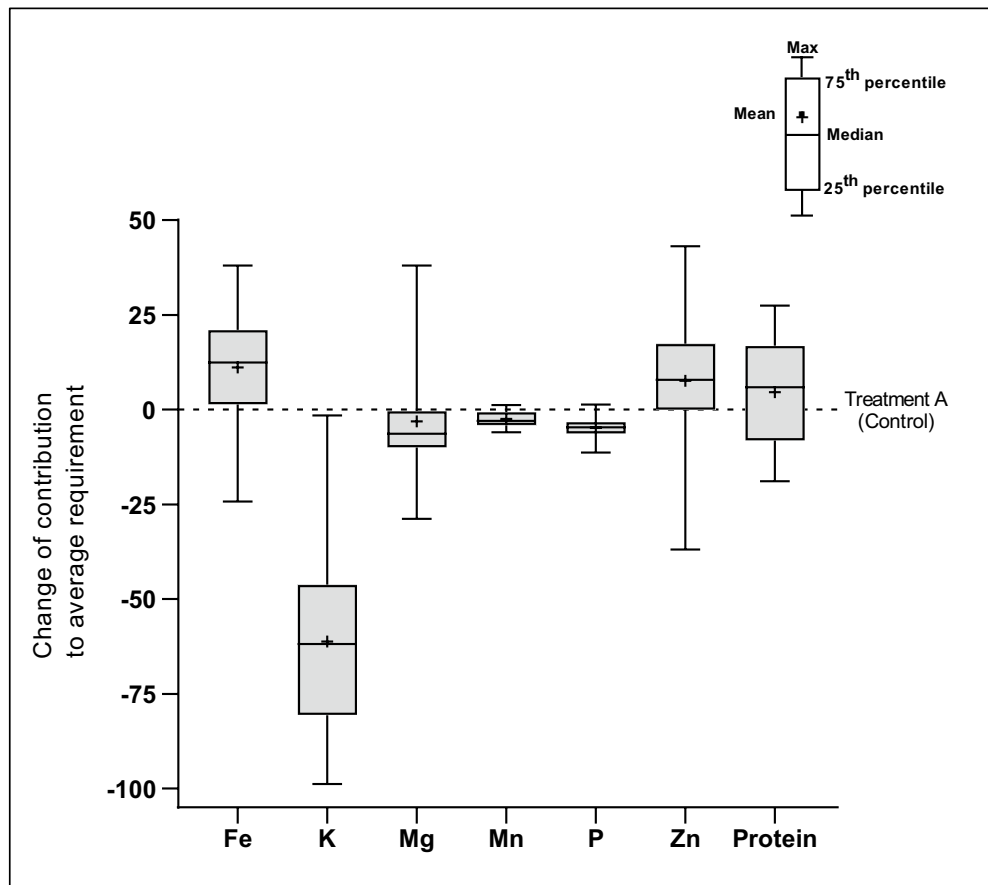


Figure 5. Contribution of average wheat supply of 298.5 g/person/day to daily average requirement of some essential nutrients of European adults (≥ 18 years). Treatment A = Ambient CO₂, lower temperature settings and no O₃ addition (control).

Discussion

Global diets are highly reliant on cereals, most particularly rice, wheat, and maize. Any change in yield or quality can affect the dietary health of millions of people. Our results from controlled chamber experiments offer robust evidence that combinations of abiotic stresses associated with climate change affect the yield and nutrient content of wheat, supporting earlier observations and modelling. For most nutrients, the European landrace variety Lantvete outperformed the commercial cultivars. This agrees with other studies which showed that landraces recorded higher nutrient content than cultivars, for twelve nutritionally important minerals¹⁰. Lantvete showed grain yield plasticity across climate treatments, indicating a trend of not losing yield under abiotic stress conditions²⁹. Varietal diversity has been demonstrated in wheat in response to elevated O₃^{17,37} and against heat stress¹³. The variation of reduction of yield under elevated temperature across wheat cultivars in South Africa suggested that global warming impacts may be mitigated through the sharing of gene pools among wheat breeding programs³⁸. These differences of response between cultivars offer a good opportunity for breeding towards more climate-resilient and nutritious crops¹⁴.

All abiotic stress conditions reduced yield of wheat, but surprisingly, considering yield trade-offs, combined abiotic stresses could actually increase the contribution of wheat towards meeting Fe, Zn and protein requirements by + 12.44%, + 7.91% and + 5.88%, respectively. Conversely, the combined stresses could decrease the contribution by – 2.87% to – 6.36% for Mg, Mn and P, and – 61.80% for K requirements. Although one should consider that nutrient losses occur during storage and processing of grain. For example, there is an approximate 25% loss of protein, 90% loss of Mn, 85% loss of Zn, and 80% loss of Mg, K and Cu when wheat is milled and refined into flour⁶¹, and a 1.7% to 4.6% loss of Cu, Mn, Fe and Zn during 60-day storage and baking of wheat flour⁶².

Ozone had particularly interesting effects on micronutrient accumulation. Elevated O₃ (as a single stress) has been shown to affect nutrient content of grains^{17,18,32}, and there is a high variability of sensitivity to tropospheric ozone among species and cultivars^{17,34}. Ozone enters in the plant through the stomata of the underside of the leaf, and most likely reacts with molecules in the cell wall, and due to its strong oxidative property, it triggers production of reactive oxygen species (ROS). The ROS damage cellular components, resulting in reduction of photosynthesis and other important physiological functions, acceleration of leaf senescence, and reduction of plant growth, with the consequence of weaker plants and impaired yield attributes^{35–37}. On the other hand, O₃-stressed plants maintain to a larger extent N uptake while biomass accumulation is reduced, resulting in an increased grain protein content³⁸. Furthermore, increase of grain mineral concentration may be attributed to a higher accumulation of these minerals, as a non-enzymatic antioxidant defense responses to abiotic stress³⁹. This could explain why in our study, plants under chronic O₃ exposure concentrated more minerals in their grain than the episodic O₃-exposed plant. Furthermore, the effect of drought stress on wheat minerals was reverted under chronic O₃ exposure, while changes resulting from high temperature overrode the changes due to CO₂ and O₃²⁹. For adaptation of crops to abiotic stress, selection of cultivars resistant to multiple abiotic stresses have been recommended⁴¹. Further work is needed to elucidate the molecular mechanisms underpinning these observations.

Average decreases of – 1.12% and – 1.2% respectively in wheat grain protein content for 1 t/ha increase in grain yield were reported in previous studies^{42,43}. Our results are in line with the above studies. With regards to modelling the effect of O₃ on protein content, a simple statistical relationship between grain yield and protein content may provide an efficient parameterization. Under plant exposure to high O₃, the observed increase in protein content is a result of the decrease in grain yield⁴³, which is already simulated in some crop models^{44–46}. It should be noted, however, that Eichi et al.⁴⁷ found that the relationship between grain protein content and yield for wheat in Australia varies between low and high productivity environments. Hence, the linear regression of Fig. 5 may not be extrapolated with any degree of confidence below or above certain yield levels. Overall, our results agree with previous studies that the negative relationship between grain protein content and yield becomes stronger under elevated CO₂^{48,49}, and a single linear regression based on yield may become less efficient in predicting protein content of wheat grain. Nevertheless, combined abiotic stress conditions associated with climate change are not likely to affect protein intakes to a great extent.

Intake of certain micronutrients are not met in many European countries. A study on adult nutrient intakes from national dietary surveys of European populations showed that although all countries met the female and male WHO recommended nutrient intakes (RNIs) for Zn, intakes of Fe, I and K were poorly attained in women⁵⁰. Our results suggest that plant responses to abiotic stresses associated with climate change could contribute to mitigating inadequacy of Fe and potentially Zn from wheat consumption but could exacerbate K deficiency. This highlights the precarity of the global food system which relies so heavily on very few crops for human nutrition. Further research needs to model nutrient intake for high and low wheat consumers, a rising population and take into account nutrient losses during processing. Furthermore, we recommend that micronutrient analyses are included alongside yield and protein levels in field experiments with different varieties and geographical locations.

Conclusion

The results from our controlled-chamber experiments indicate that combined abiotic stress factors associated with climate change negatively affect yield, but effects on protein and most micronutrients (apart from K) may compensate for yield losses. Chronic exposure to O₃ had interesting effects which appear to counteract the effects of CO₂, heat, and drought. This may be due to the role of some micronutrients in ozone-induced physiological responses. Cultivar differences suggest that there are genetic differences that could be explored through breeding of climate-resilient and nutritious crops.

Methods

Plant materials. Three spring wheat varieties were studied, including two modern varieties (Lennox and KWS Bittern) and one landrace (Sweedish Lantvete). Lennox (Saaten-Union) used in southern France was supplied by Dr. Marie Launay, French National Institute for Agriculture, Food, and Environment (INRAE), Agrocim HDR, France. KWS Bittern used in Denmark was supplied by Danish Agro (Karise, Denmark). The landrace variety (Swedish Lantvete) was available from the Nordic Genetic Resource Center (NordGen), Swedish University of Agricultural Sciences, Alnarp, Sweden. All experiments were carried out according to institutional, national, and international biosafety standards.

Their life cycle is between 3 to 4 months. Twelve seeds of each variety tested were sown in 11 L pots filled with 4 kg of sphagnum (Pindstrup Substrate No. 4, Pindstrup Mosebrug A/S, Ryomgaard, Denmark) and thinned to 8 plants after germination, corresponding to ~ 165 plants/m². As the sphagnum was nutrient enriched with 10 g NPK fertilizer (21-3-10, Kemira Denmark A/S), no additional nutrients were added to the pots. Tap water was used for watering. Each variety was represented in each treatment with five pots.

Climate chamber. The experiment was performed in climate chambers that provided a controlled environment and uniform conditions, thus eliminating other potentially interacting parameters. The facility used was the RERAF phytotron (Riso Environmental Risk Assessment Facility, Technical University of Denmark, Riso, Denmark), which consists of six gastight chambers sized 6 × 4 × 3 m (length, width & height), providing detailed control of temperature, CO₂, air humidity, light, and O₃ concentration and exposure duration. Details of description of the climate chamber are available in^{24,51,52}.

Climate abiotic stress treatments. Full details of the experimental conditions and treatments are available in Hansen et al.²⁹. Climate change treatments were selected among possible combinations of two present and future temperature levels (19/12 °C or 24/17 °C, both levels simulating days (16 h) that are warmer than nights (8 h)), two concentrations of CO₂ (400 and 700 ppm), and one of three O₃ regimes (no O₃ enrichment, episodic O₃ exposure, and full-time O₃ exposure). Ozone concentrations for the treatments without O₃ enrichment was the climate chambers background levels (5.9 ± 0.5 to 7.2 ± 1.7 ppb), which are lower than the outside average O₃ concentration near the RERAF phytotron (average of 40.4 ppb, and maximum 1 h concentrations between 70.9 and 86.6 ppb). For both the episodic and full-time O₃ exposure treatments, O₃ concentration target was 80–100 ppb during the day (16 h of daytime O₃ exposure), and chamber background level equivalent to the no O₃ enrichment treatments at night. The full-time O₃ exposure treatments started at sowing, while the episodic O₃ exposure treatments began when Lennox variety reached Zadoks' developmental stage 31 (ZS31—first node detectable) and ended when the variety reached stage 69 (ZS69—anthesis complete)⁵³.

Throughout the experiment, relative humidity was maintained at 55/70% (day/night) for all treatments. To provide appropriate supply of water, plants were watered 3 times a week. All plants received increasingly more water as they grew, the warm treatment plants were, by design and by consumption, given more water than ambient treatment plants. Pots were weighed before and after watering to ensure the same amount of water was accessible in the treatment regardless of the pot's previous consumption. Additionally, a water-limited (WL) treatment was given to 2 selected climate combination treatments of variety KWS Bittern. It consisted of limited water supply in A.O3 and CT.O3, where the plants were subjected to chronic O₃ addition, in different CO₂ and temperature conditions. Thus, 10 climate treatment combinations were tested in total and named as follows:

- A = Ambient CO₂, lower temperature settings and no O₃ addition (control)
- A.EpO3 = Ambient CO₂, lower temperature settings and episodic O₃ addition
- A.O3 = Ambient CO₂, lower temperature settings and chronic O₃ addition
- C.EpO3 = High CO₂, lower temperature settings and episodic O₃ addition
- CT = High CO₂, higher temperature settings, and no O₃ addition
- CT.EpO3 = High CO₂, higher temperature settings and episodic O₃ addition
- CT.O3 = High CO₂, higher temperature settings and chronic O₃ addition
- T.EpO3 = Ambient CO₂, higher temperature and episodic O₃ addition
- WLA.O3: Ambient CO₂, lower temperature settings and chronic O₃ addition (i.e., A.O3), in water-limited condition
- WLCT.O3 = High CO₂, higher temperature settings and chronic O₃ addition (i.e., CT.O3), in water-limited condition.

Process values of treatment parameters such as relative humidity, CO₂ concentration, and temperature were logged by a data collection system several times per minute. The O₃ concentration was monitored twice every hour. At maturity, with moisture content around 9–13%, grains were harvested, threshed and winnowed, and the grains from plants of each replicate of treatment was mixed for further analyses.

Nutrient analysis. Grains were pulverized into whole wheat flour using a household blender, 600 mg of flour was weighed in a glass test tube, 3 mL of 69% HNO₃ (Hiperpur, Panreac, Spain) and 2 mL of deionized water (Milli-Q, Merck, Spain) were added. The mixture was digested in a microwave (Milestone, Ultrawave, Italy) at 240 °C and 40 bar for 40 min at 1500 W, and the digesta was brought to a final volume of 50 mL with Milli-Q water. Minerals (C, N, F, K, Mg, Mn, P, and Zn) were analyzed using inductively coupled plasma optical emission spectroscopy (ICP-OES). Analysis was performed on a PerkinElmer, Optima 4600 DV ICP-OES analyzer (Waltham, USA). The running parameters were set as follow: plasma flow 15 L/min, auxiliary flow 0.2

Mineral	K	Mg	Mn	Zn	Fe	P
ICP-OES wavelengths (nm)	766.49	285.213	257.61	206.2	238.204	213.617
Standard concentration range	0.5–50	0.5–50	1–100	10–1000	10–1000	1–50
Standard concentration unit	mg/L	mg/L	µg/L	µg/L	µg/L	mg/L
Linearity	0.9999	0.9999	1.0000	0.9998	1.0000	0.9995
Recovery (%)	93.7	99.8	74.0	96.8	65.9	68.7
RSD (%)	6.4	6.5	5.9	7.6	6.1	6.2
LOD (mg/kg)	0.8111	0.0262	0.00276	0.0514	0.00178	2.604
LOQ (mg/kg)	36.198	0.173	0.00779	0.3098	0.2448	17.11

Table 1. Detection and quantification parameters of wheat minerals by ICP-OES.

L/min, nebulizer flow 0.8 L/min, power 1300 W, reading distance 15 mm, reading position radial (K) and axial (Mg, Mn, Zn, Fe and P), integration time 5–10 s, and number of replicas 3. For quantification, standards (Pan-reac Química SLU, Spain) were prepared in HNO₃-H₂O in the same proportion as the samples (matrix matched calibration standards). Wheat standard reference material GBW10011 was used for recovery and limits determination. The detection and quantification validation parameters are summarized in Table 1. Nutrient content was corrected from grain moisture content, determined by using the Association of Analytical Communities (AOAC) Method 991.39⁵⁴. Content of N and C were expressed in g/100 g dry weight (dw), while Fe, K, Mg, Mn, P and Zn were in mg/100 g dw. Gluten content was determined according to the ICC 155 procedure⁵⁵ by the Nordic Seed Laboratory Services, and expressed in percent of protein content. Protein content was obtained by multiplying the nitrogen content by 5.83⁵⁶ and expressed in g/100 g dw.

Impact on future food and nutrition security. To evaluate the overall effect of the treatments on grain nutrients availability, yield data from the experiment were obtained from Hansen et al.²⁹. Yield data of each treatment was used to correct the value of content of each nutrient, and the yield-corrected nutrient content were compared with the original ones. The potential repercussions of effect of both climate treatments and yield on food and nutrition security under future climate scenarios was analyzed with a case study of European adults. For this, per capita wheat supply (298.55 g/day) was obtained from FAO food supply data for Europe⁸. Daily average requirements (AR) of each nutrient were obtained from EFSA Dietary Reference Values for the EU database⁵⁷ for adults (≥ 18 years) males, and females not under any physiological status (pregnant, lactating, menopausal). For Zn, values at high level of phytate intake (LPI = 1200 mg/day) were considered. These were combined with the yield-corrected nutrient content to estimate the potential percent contribution of each nutrient to average daily intake of some essential nutrients of adults in Europe.

Data analysis. Climate chamber experiments were performed in triplicate, and each wheat sample was analyzed in triplicate. Data were statistically analyzed using IBM SPSS Statistics v 26. ANOVAs were performed to determine the effect individual and combination of treatment on the content of each nutrient, one-way Dunnett's test with treatment A as control was applied for temperature, CO₂ and O₃ treatments. For drought experiment, each water-limited (WL) treatment was also compared against its corresponding control, i.e., WLCT.O3 vs CT.O3 and WLA.O3 vs A.O3. Additionally, performance of landrace variety Lantvete was compared with that of modern varieties KWS Bittern and Lennox using a 1-tailed pairwise Student's t-test. Similarly, a 1-tailed pairwise Student's t-test was also used to assess the significance of differences between original nutrient contents and yield-corrected nutrient contents. Three levels of significance (0.05, 0.01 and 0.001) were considered. The trade-off between grain yield and protein content was quantified using linear regressions of the three cultivars growing under baseline CO₂ (400 ppm) and future CO₂ (700 ppm) levels; the grain yield data were converted to t/ha⁴⁶. Graphical representations were generated using R version R-4.0.1 and GraphPad Prism version 9.0.2 for Windows.

Received: 6 November 2021; Accepted: 21 March 2022

Published online: 05 April 2022

References

1. Fanzo, J., Davis, C., McLaren, R. & Choufani, J. The effect of climate change across food systems: Implications for nutrition outcomes. *Glob. Food Sec.* **18**, 12–19 (2018).
2. Tai, A. P. K., Martin, M. V. & Heald, C. L. Threat to future global food security from climate change and ozone air pollution. *Nat. Clim. Chang.* **4**, 817–821 (2014).
3. Medek, D. E., Schwartz, J. & Myers, S. S. Estimated effects of future atmospheric CO₂ concentrations on protein intake and the risk of protein deficiency by country and region. *Environ. Health Perspect.* **125**, 087002 (2017).
4. Myers, S. S., Wessells, K. R., Kloog, I., Zanobetti, A. & Schwartz, J. Effect of increased concentrations of atmospheric carbon dioxide on the global threat of zinc deficiency: A modelling study. *Lancet Glob. Health* **3**, e639–e645 (2015).
5. Smith, M. R., Golden, C. D. & Myers, S. S. Potential rise in iron deficiency due to future anthropogenic carbon dioxide emissions. *GeoHealth* **1**, 248–257 (2017).

6. Smith, M. & Myers, S. S. Measuring the effects of anthropogenic CO₂ emissions on global nutrient intakes: A modelling analysis. *The Lancet* **389**, S19 (2017).
7. Shewry, P. R. & Hey, S. J. The contribution of wheat to human diet and health. *Food and Energy Security* **4**, 178–202 (2015).
8. FAO. Food and Agriculture Organization of the United Nations. FAOSTAT Database. Rome, Italy. <http://www.fao.org/faostat/en/#home> (2021).
9. Weegels, P. L. The future of bread in view of its contribution to nutrient intake as a starchy staple food. *Plant Foods Hum. Nutr.* **74**, 1008 (2019).
10. Hussain, A., Larsson, H., Kuktaite, R. & Johansson, E. Mineral composition of organically grown wheat genotypes: Contribution to daily minerals intake. *Int. J. Environ. Res. Public Health* **7**, 3442–3456 (2010).
11. Asif, M. *et al.* Effect of predicted climate change on growth and yield performance of wheat under varied nitrogen and zinc supply. *Plant Soil* **434**, 231–244 (2019).
12. Larsen, K. S. *et al.* Reduced N cycling in response to elevated CO₂, warming, and drought in a Danish heathland: Synthesizing results of the CLIMATE project after two years of treatments. *Glob. Change Biol.* **17**, 1884–1899 (2011).
13. Tomás, D., Rodrigues, J. C., Viegas, W. & Silva, M. Assessment of high temperature effects on grain yield and composition in bread wheat commercial varieties. *Agronomy* **10**, 499 (2020).
14. Myers, S. S. *et al.* Increasing CO₂ threatens human nutrition. *Nature* **510**, 139–142 (2014).
15. Högy, P. *et al.* Grain quality characteristics of spring wheat (*Triticum aestivum*) as affected by free-air CO₂ enrichment. *Environ. Exp. Bot.* **88**, 11–18 (2013).
16. Fernando, N. *et al.* Rising atmospheric CO₂ concentration affects mineral nutrient and protein concentration of wheat grain. *Food Chem.* **133**, 1307–1311 (2012).
17. Tomer, R. *et al.* Impact of elevated ozone on growth, yield and nutritional quality of two wheat species in Northern India. *Aerosol Air Qual. Res.* **15**, 329–340 (2015).
18. Broberg, M. C., Feng, Z., Xin, Y. & Pleijel, H. Ozone effects on wheat grain quality—A summary. *Environ. Pollut.* **197**, 203–213 (2015).
19. IPCC. *Climate Change 2021: The Physical Science Basis. Contribution of Working Group I to the Sixth Assessment Report of the Intergovernmental Panel on Climate Change.* (2021).
20. Gooding, M. J., Ellis, R. H., Shewry, P. R. & Schofield, J. D. Effects of restricted water availability and increased temperature on the grain filling, drying and quality of winter wheat. *J. Cereal Sci.* **37**, 295–309 (2003).
21. Silva, A. N. *et al.* Water stress alters physical and chemical quality in grains of common bean, triticale and wheat. *Agric. Water Manag.* **231**, 106023 (2020).
22. Hammad, S. A. R. & Ali, O. A. M. Physiological and biochemical studies on drought tolerance of wheat plants by application of amino acids and yeast extract. *Ann. Agric. Sci.* **59**, 133–145 (2014).
23. Rezaei, M., Zehtab-Salmasi, S., Najafi, N., Ghassemi-Golezani, K. & Jalalikamali, M. Effects of water deficit on nutrient content and grain protein of bread wheat genotypes. *J. Food Agric. Environ.* **8**, 535–553 (2010).
24. Clausen, S. K. *et al.* Effects of single and multifactor treatments with elevated temperature, CO₂ and ozone on oilseed rape and barley. *J. Agron. Crop Sci.* **197**, 442–453 (2011).
25. Dieleman, W. I. J. *et al.* Simple additive effects are rare: A quantitative review of plant biomass and soil process responses to combined manipulations of CO₂ and temperature. *Glob. Change Biol.* **18**, 2681–2693 (2012).
26. Shaw, M. R. *et al.* Grassland responses to global environmental changes suppressed by elevated CO₂. *Science* **298**, 1987–1990 (2002).
27. Ghosh, A., Agrawal, M. & Agrawal, S. B. Effect of water deficit stress on an Indian wheat cultivar (*Triticum aestivum* L. HD 2967) under ambient and elevated level of ozone. *Sci. Total Environ.* **714**, 136837 (2020).
28. Leisner, C. P. Review: Climate change impacts on food security—focus on perennial cropping systems and nutritional value. *Plant Sci.* **293**, 110412 (2020).
29. Hansen, E. M. Ø., Hauggaard-Nielsen, H., Launay, M., Rose, P. & Mikkelsen, T. N. The impact of ozone exposure, temperature and CO₂ on the growth and yield of three spring wheat varieties. *Environ. Exp. Bot.* **168**, 103868–103882 (2019).
30. Tebaldi, C. *et al.* Climate model projections from the scenario model intercomparison project (ScenarioMIP) of CMIP6. *Earth Syst. Dyn.* **12**, 253–293 (2021).
31. Leisner, C. P. & Ainsworth, E. A. Quantifying the effects of ozone on plant reproductive growth and development. *Glob. Change Biol.* **18**, 606–616 (2012).
32. Singh, A. A., Agrawal, S. B., Shahi, J. P. & Agrawal, M. Yield and kernel nutritional quality in normal maize and quality protein maize cultivars exposed to ozone. *J. Sci. Food Agric.* **99**, 2205–2214 (2019).
33. Volz, A. & Kley, D. Evaluation of the Montsouris series of ozone measurements made in the nineteenth century. *Nature* **332**, 240–242 (1988).
34. Mishra, A. K., Rai, R. & Agrawal, S. B. Differential response of dwarf and tall tropical wheat cultivars to elevated ozone with and without carbon dioxide enrichment: Growth, yield and grain quality. *Field Crop Res.* **145**, 21–32 (2013).
35. Bhatia, A., Tomer, R., Kumar, V., Singh, S. D. & Pathak, H. Impact of tropospheric ozone on crop growth and productivity - a review. *J. Sci. Ind. Res.* **71**, 97–112 (2012).
36. Fuhrer, J. Ozone risk for crops and pastures in present and future climates. *Naturwissenschaften* **96**, 173–194 (2009).
37. Singh, S. *et al.* Synergistic action of tropospheric ozone and carbon dioxide on yield and nutritional quality of Indian mustard (*Brassica juncea* (L.) Czern.). *Environ. Monitor. Assess.* **185**, 6517–6529 (2013).
38. Wang, Y. & Frei, M. Stressed food—The impact of abiotic environmental stresses on crop quality. *Agric. Ecosyst. Environ.* **141**, 271–286 (2011).
39. Zouari, M. *et al.* Enzymatic antioxidant responses and mineral status in roots and leaves of olive plants subjected to fluoride stress. *S. Afr. J. Bot.* **111**, 44–49 (2017).
40. Naeem, M. *et al.* Foliar calcium spray confers drought stress tolerance in maize via modulation of plant growth, water relations, proline content and hydrogen peroxide activity. *Arch. Agron. Soil Sci.* **64**, 116–131 (2018).
41. Tai, A. P. K. & Martin, M. V. Impacts of ozone air pollution and temperature extremes on crop yields: Spatial variability, adaptation and implications for future food security. *Atmos. Environ.* **169**, 11–21 (2017).
42. Bogard, M. *et al.* Deviation from the grain protein concentration–grain yield negative relationship is highly correlated to post-anthesis N uptake in winter wheat. *J. Exp. Bot.* **61**, 4303–4312 (2010).
43. Pleijel, H. & Uddling, J. Yield vs. quality trade-offs for wheat in response to carbon dioxide and ozone. *Global Change Biol.* **18**, 596–605 (2012).
44. Ewert, F. & Porter, J. R. Ozone effects on wheat in relation to CO₂: Modelling short-term and long-term responses of leaf photosynthesis and leaf duration. *Glob. Change Biol.* **6**, 735–750 (2000).
45. Guarin, J. R., Kassie, B., Mashaheet, A. M., Burkey, K. & Asseng, S. Modeling the effects of tropospheric ozone on wheat growth and yield. *Eur. J. Agron.* **105**, 13–23 (2019).
46. Droutsas, I., Challinor, A. J., Arnold, S. R., Mikkelsen, T. N. & Hansen, E. M. Ø. A new model of ozone stress in wheat including grain yield loss and plant acclimation to the pollutant. *Eur. J. Agron.* **120**, 126125 (2020).
47. Eichi, V. R. *et al.* Strengths and weaknesses of national variety trial data for multi-environment analysis: A case study on grain yield and protein content. *Agronomy* **10**, 753 (2020).

48. Mills, G. *et al.* Closing the global ozone yield gap: Quantification and cobenefits for multistress tolerance. *Glob. Change Biol.* **24**, 4869–4893 (2018).
49. Bloom, A. J., Burger, M., Kimball, B. A. & Pinter, P. J. Nitrate assimilation is inhibited by elevated CO₂ in field-grown wheat. *Nat. Clim. Chang.* **4**, 477–480 (2014).
50. Rippin, H., Hutchinson, J., Jewell, J., Breda, J. & Cade, J. Adult nutrient intakes from current national dietary surveys of European populations. *Nutrients* **9**, 1288 (2017).
51. Frenck, G., van der Linden, L., Mikkelsen, T. N., Brix, H. & Jørgensen, R. B. Increased [CO₂] does not compensate for negative effects on yield caused by higher temperature and [O₃] in *Brassica napus* L.. *Eur. J. Agron.* **35**, 127–134 (2011).
52. Ingvordsen, C. H. *et al.* Significant decrease in yield under future climate conditions: Stability and production of 138 spring barley accessions. *Eur. J. Agron.* **63**, 105–113 (2015).
53. Zadoks, J. C., Chang, T. T. & Konzak, C. F. A decimal code for the growth stages of cereals. *Weed Res.* **14**, 415–421 (1974).
54. Latimer, G. W. *Official Method of Analysis of AOAC International*. (AOAC International, 2012).
55. ICC. *ICC-Standard No 155 Approved 1994. International Association for Cereal Science and Technology*. (1994).
56. FAO. *Food energy-Methods of analysis and conversion factors: Report of a technical workshop, Rome, 2002. FAO Food and Nutrition Paper No. 77*. (2003).
57. EFSA. EFSA Dietary Reference Values for the EU. <https://efsa.gitlab.io/multimedia/drvs/index.htm> (2021).

Acknowledgements

This work was implemented as part of the CGIAR Research Program on Climate Change, Agriculture and Food Security (CCAFS), which is carried out with support from the CGIAR Trust Fund and through bi-lateral funding agreements. For details, please visit <https://ccafs.cgiar.org/donors>. The views expressed in this document cannot be taken to reflect the official opinions of these organizations. The experimental data is generated as a part of the Joint Programming Initiative on Agriculture, Food Security and Climate Change (FACCE-JPI) and funded by the FACCE-ERA-NET+ Action: Climate-CAFÉ. Saaten-Union, Danish AGRO and Nordic Genbank kindly provided the spring wheat seeds for the study. The nutritional aspects of the work were funded by the Priestley International Centre for Climate through a PhD studentship to ID and by the UK Research and Innovation Biotechnology and Biological Sciences Research Council (UKRI-BBSRC) as part of the Global Challenges Research Fund project Agricultural and Food-system Resilience: Increasing Capacity and Advising Policy (GCRF-AFRICAP, grant number BB/P027784/1) to YJHG, AC and CO. The authors are thankful to the RIAIDT-USC analytical facilities for mineral analyses, and to Dr Steward Jennings and Dr Chetan Deva for contextualizing the climate scenarios.

Author contributions

E.M.Ø.H. and T.N.M. conceptualized the crop study, devised the methodology and performed the crop chamber experiments. C.O. and A.J.C. conceptualized the nutritional aspects of climatic effects. Y.J.H.G., M.J.H. and I.D. analyzed the data. Y.J.H.G., C.O. and I.D. drafted the manuscript. All authors critically reviewed and approved the final manuscript. A.J.C. and T.N.M. ensured the resources and funding for the crop project, C.O. and A.J.C. ensured the resources for the nutritional analysis and modelling work.

Competing interests

The authors declare no competing interests.

Additional information

Supplementary Information The online version contains supplementary material available at <https://doi.org/10.1038/s41598-022-09538-6>.

Correspondence and requests for materials should be addressed to C.O.

Reprints and permissions information is available at www.nature.com/reprints.

Publisher's note Springer Nature remains neutral with regard to jurisdictional claims in published maps and institutional affiliations.



Open Access This article is licensed under a Creative Commons Attribution 4.0 International License, which permits use, sharing, adaptation, distribution and reproduction in any medium or format, as long as you give appropriate credit to the original author(s) and the source, provide a link to the Creative Commons licence, and indicate if changes were made. The images or other third party material in this article are included in the article's Creative Commons licence, unless indicated otherwise in a credit line to the material. If material is not included in the article's Creative Commons licence and your intended use is not permitted by statutory regulation or exceeds the permitted use, you will need to obtain permission directly from the copyright holder. To view a copy of this licence, visit <http://creativecommons.org/licenses/by/4.0/>.

© The Author(s) 2022