

## Research



**Cite this article:** Barrett JH, Khamaiko N, Ferrari G, Cuevas A, Kneale C, Hufthammer AK, Pálsdóttir AH, Star B. 2022 Walrus on the Dnieper: new evidence for the intercontinental trade of Greenlandic ivory in the Middle Ages. *Proc. R. Soc. B* **289**: 20212773. <https://doi.org/10.1098/rspb.2021.2773>

Received: 28 December 2021

Accepted: 7 March 2022

**Subject Category:**

Palaeobiology

**Subject Areas:**

ecology, genomics

**Keywords:**

ecological globalization, ancient DNA, stable isotopes, historical ecology, Middle Ages, *Odobenus rosmarus rosmarus*

**Author for correspondence:**

James H. Barrett

e-mail: [james.barrett@ntnu.no](mailto:james.barrett@ntnu.no)

Electronic supplementary material is available online at <https://doi.org/10.6084/m9.figshare.c.5901183>.

# Walrus on the Dnieper: new evidence for the intercontinental trade of Greenlandic ivory in the Middle Ages

James H. Barrett<sup>1</sup>, Natalia Khamaiko<sup>2</sup>, Giada Ferrari<sup>3</sup>, Angélica Cuevas<sup>3</sup>, Catherine Kneale<sup>4</sup>, Anne Karin Hufthammer<sup>5</sup>, Albína Hulda Pálsdóttir<sup>3</sup> and Bastiaan Star<sup>3</sup>

<sup>1</sup>Department of Archaeology and Cultural History, NTNU Vitenskapsmuseet, Norwegian University of Science and Technology, 7491 Trondheim, Norway

<sup>2</sup>Institute of Archaeology, National Academy of Sciences of Ukraine, 12 Heroiv Stalingrada Ave., 04210 Kyiv, Ukraine

<sup>3</sup>Centre for Ecological and Evolutionary Synthesis, Department of Biosciences, University of Oslo, PO Box 1066, Blindern, 0316 Oslo, Norway

<sup>4</sup>McDonald Institute for Archaeological Research, Department of Archaeology, University of Cambridge, Downing Street, Cambridge CB2 3ER, UK

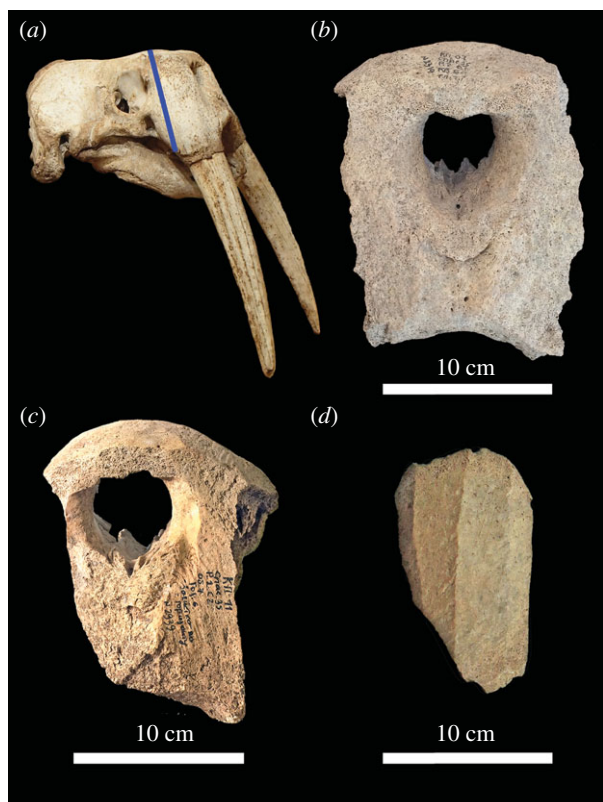
<sup>5</sup>Department of Natural History, The University Museum, University of Bergen, PO Box 7800, 5020 Bergen, Norway

JHB, 0000-0002-6683-9891; NK, 0000-0002-7396-0315; GF, 0000-0002-0850-1518; AC, 0000-0003-0862-4582; AKH, 0000-0002-1570-9667; AHP, 0000-0002-5290-6862; BS, 0000-0003-0235-9810

Mediaeval walrus hunting in Iceland and Greenland—driven by Western European demand for ivory and walrus hide ropes—has been identified as an important pre-modern example of ecological globalization. By contrast, the main origin of walrus ivory destined for eastern European markets, and then onward trade to Asia, is assumed to have been Arctic Russia. Here, we investigate the geographical origin of nine twelfth-century CE walrus specimens discovered in Kyiv, Ukraine—combining archaeological typology (based on *chaîne opératoire* assessment), ancient DNA (aDNA) and stable isotope analysis. We show that five of seven specimens tested using aDNA can be genetically assigned to a western Greenland origin. Moreover, six of the Kyiv rostra had been sculpted in a way typical of Greenlandic imports to Western Europe, and seven are tentatively consistent with a Greenland origin based on stable isotope analysis. Our results suggest that demand for the products of Norse Greenland's walrus hunt stretched not only to Western Europe but included Ukraine and, by implication given linked trade routes, also Russia, Byzantium and Asia. These observations illuminate the surprising scale of mediaeval ecological globalization and help explain the pressure this process exerted on distant wildlife populations and those who harvested them.

## 1. Introduction

The depletion of walrus by mediaeval hunting in Iceland and Greenland is an important pre-modern example of ecological globalization, a process by which increasingly distant rural or hunter/gatherer communities were linked with centres of consumption such as major cities [1–3]. European demand for walrus products was high during the Middle Ages, driven by the popularity of carved morse ivory among ecclesiastical and secular elites and of walrus-hide ropes for heavy lifting tasks [4–7]. Material evidence of the resulting trade survives as ivory artefacts and as pieces of modified walrus skulls (rostra) in which pairs of tusks were transported (figure 1). Studies of these rostra, using archaeological, ancient DNA (aDNA) and stable isotope methods, have demonstrated that most examples from Northwestern Europe were



**Figure 1.** Walrus rostra from mediaeval Kyiv: (a) complete modern skull for comparison, with a line indicating the plane of rostrum removal; (b) anterior view of R64, showing breakage of the tusk sockets for ivory removal; (c) anterior view of R73, showing carving of the anterior surface and rough faceting of the surviving dorsal portion of the left tusk socket; (d) lateral view of R66, showing how the tusk socket was thinned by carving rough parallel facets. Scale bars ca 10 cm. Photographs: James H. Barrett and Natalia Khamaiko. (Online version in colour.)

probably imported from Norse Greenland [1,3]. The walrus were hunted in western Greenland, and conceivably also in the eastern Canadian Arctic, with pairs of tusks in rostra then sent to centres such as Dublin, Trondheim, Schleswig and Bergen for carving and/or onward trade [3,8].

Centres in Eastern Europe also provide evidence of mediaeval walrus trade. Novgorod, Russia, has produced one of the largest collections of carved mediaeval walrus ivory in Europe [9,10] and excavations in Kyiv, Ukraine, revealed nine walrus rostra—more than most northern European centres; only Bergen and Schleswig, with 15 examples each, have more [3,11,12]. Moreover, mediaeval Arabic written sources regarding trade in Central and Western Asia refer to ‘fish teeth’ interpreted as walrus tusks acquired in or via what are now Ukraine and Russia, valued for making knife handles and sword hilts [13–15]. Historical evidence from mediaeval Byzantium also suggests imports of walrus ivory from Ukraine or Russia [16]. It has long been posited that the most important source of walrus imports for mediaeval eastern Europe was Arctic Russia [5,6,9,17–19], but the origin of these finds is in fact hitherto unknown.

Archaeological descriptions of one rostrum from Novgorod and three from Kyiv have been published [3,9,11,12], but without aDNA and stable isotope analysis. Six additional Kyiv specimens were discovered by one of us (N.K.) during excavations and recent post-excavation analysis. Here, we report new aDNA and stable isotope analyses on seven of the nine Kyiv specimens (those available for sampling: R64,

R65, R66, R71, R72, R73, R74) and provide an archaeological *chaîne opératoire* (operational sequence) assessment of the way in which the seven sufficiently complete examples (R64, R65, R66, R71, R72, R73, R76) were prepared for trade.

As a result, it is possible to solve the mystery of their likely source. An understanding of these rostra also casts light on the potential origins of the abundant walrus ivory from Novgorod, given that the latter city lies on the river trade route through which any source (Arctic Russian, Greenlandic or otherwise) would reach Kyiv. Finally, the Kyiv samples may illuminate the ultimate origins of tusks traded onward to Byzantium and Asia in the Middle Ages, as known from the Greek and Arabic written sources [13–16]; the city was an important nexus of trade, with especially strong links to Scandinavia, Germany, Poland and Constantinople [20–23]. Thus an understanding of ecological globalization—and of the potential scale of demand focused on Greenland’s walrus—can be greatly enhanced by determining the ultimate origins of the Kyiv walrus finds.

## 2. Material and methods

### (a) Archaeology and zooarchaeology

The Kyiv walrus specimens all included part of at least one tusk socket, facilitating confident morphological identification. They had fused cranial sutures and are inferred to be from adult individuals. The specimens were excavated in 2007, 2008 and 2011, from Horizons 5 and 6 of the 35 Spaska Street site in the Podil district [20–22]. This part of the lower town was periodically flooded, creating a sequence of clear and closely dated (based on artefact types and superposition) cultural and alluvial layers. Given their find contexts, the rostra date to the mid-twelfth (R71, R72, R73, R74) and late-twelfth (R64, R65, R66, R75, R76) centuries.

Seven of the nine specimens preserved enough evidence of past modification to be classified according to a four-category *chaîne opératoire* typology established by Barrett *et al.* [3], based on the characteristics of all previously known mediaeval European finds of walrus rostra (see electronic supplementary material, figure S1). The types capture sets of increasingly elaborate steps used to remove and sculpt each rostrum; the modifications produced a compact decorated package from which the tusks could be easily removed when needed for ivory carving. The four-stage typology also represents a chronological sequence, starting in the eleventh century CE and ending (with the exception of residual outliers redeposited in later archaeological layers) in the fourteenth or fifteenth centuries CE.

Type 1 rostra were only modified by characteristic cut marks made during removal from the skull. In type 2 rostra, the tusk alveoli were thinned by rough parallel cuts that faceted the surface of each socket. Type 3 rostra have the characteristics of types 1 and 2, while also exhibiting decorative carving of the nasal aperture. Type 4 rostra have the characteristics of preceding types, but the tusk sockets are smoothly rather than roughly faceted, and the ventral margin between the tusks is invariably carved. Fragmentary rostra lacking some information can be attributed to broader categories (e.g. type 2/3).

To establish the type(s) of each Kyiv specimen, modifications were recorded under low magnification: how and from what direction the rostrum was cut from the skull; whether and how the posterior margins of the severed rostrum were finished; whether and how the nasal aperture was shaped; whether and how the anterior surface between the tusks was shaped; whether and how the tusk sockets were thinned to ease extraction of the tusks; whether and how the ventral margin between the tusks was

shaped and whether the sockets were broken during tusk removal (electronic supplementary material, figure S1 and table S1).

Where practicable, the maximum and minimum cross-section of each tusk socket was measured as a proxy for animal size and sex (electronic supplementary material, table S2). Given dimorphism, Atlantic walrus with a maximum tusk socket cross-section of  $\leq 44$  mm are likely to be female, whereas those with cross-sections of  $\geq 54$  mm are probably male, a criterion corroborated by aDNA sexing [3]. Sex is relevant because males produce larger tusks and might thus have been preferred targets of hunting [3].

Samples of  $\geq 1$  g were cut from seven of the Kyiv rostra using a micromotor, stored in separate plastic bags and shipped to the University of Oslo aDNA laboratory. Here, a subsample of each was cut and sent to the University of Cambridge for stable isotope analysis.

### (b) aDNA

All laboratory work was conducted in a dedicated aDNA clean laboratory at the University of Oslo following standard anti-contamination and authentication protocols (e.g. [24,25]). Subsamples of the seven Kyiv rostra were UV-treated for 10 min per side and pulverized by stainless-steel mortar [26]. aDNA was extracted from  $2 \times 200$  mg of bone using a mild bleach and double digestion (BLEDD) step [27,28]. Double-stranded sequencing libraries were prepared following the Meyer–Kircher protocol [29] with modifications [30] and were paired-end sequenced on an Illumina HiSeq4000 at the Norwegian Sequencing Centre.

Whole genome shotgun sequencing data from the seven Kyiv rostra were jointly analysed with genomic data from 37 walrus specimens obtained by Star *et al.* [1]. Reads were processed (PALEOMIX v. 1.2.14) [31], collapsed (AdapterRemoval v. 1.5) [32] and aligned (BWA *aln* v.0.7.5a-r405) [33] to the Pacific walrus genome assembly [34] and the Atlantic walrus mitogenome [35]. We used the chromosome resolved HiC genome assembly obtained from the DNA ZOO consortium [36]. We determined genetic sex for the Kyiv specimens (and several new stable isotope control samples noted below) by calculating the relative coverage of the X chromosome in comparison to autosomal walrus chromosomes (X:A coverage, following [3,37,38,39]). aDNA damage was assessed (mapDamage v. 2.0.6) [40] excluding alignments with a threshold of MapQ-value  $< 25$ . Genotypes for the mitogenome were jointly called (GATK v. 4.1.4.0) [41], after duplicate removal (PicardTools v. 1.96), indel realignment (*IndelRealigner*), and filtered (BCFTOOLS v. 1.9) [42]  $-i$  FS  $< 60.0$  && SOR  $< 4$  && MQ  $> 30.0$  && QD  $> 2.0$ ,  $-SnpCap$  10. Indels were excluded, and genotypes with quality  $< 15$  and read depth less than 3 were set as missing (VCFTOOLS v. 0.1.16) [43].

We analysed  $\sim 43$  million reads for the seven Kyiv rostra, yielding between 2% and 41% endogenous DNA and two- to 28-fold coverage of the mitogenome (electronic supplementary material, table S2). The Kyiv rostra are classified according to the two main mitogenomic branches that have been identified in Atlantic walrus: a western clade restricted to western Greenland and Eastern Arctic Canada and an eastern clade found from eastern Greenland to Arctic Russia, in addition to being present in western Greenland and the eastern Canadian Arctic [1]. To do so, we reconstructed a phylogenetic tree including a Pacific walrus mitogenome as outgroup using the maximum-likelihood method as implemented in IQ-tree [44,45]. We visualized this tree using Icy-tree [46] and formatted it with Adobe Illustrator.

### (c) Stable isotopes

$\delta^{13}\text{C}$ ,  $\delta^{15}\text{N}$ ,  $\delta^{34}\text{S}$  and non-exchangeable  $\delta^2\text{H}$  were measured on bone collagen. These data might be expected to show differences between walrus populations given: (i) the species' high site

fidelity [47] and (ii) inter-regional variability in isotope baseline values depending on factors such as food source, salinity, temperature, sea-ice cover and benthic–pelagic coupling [48–54].

Bone chunks of 0.5–1.1 g from seven of the Kyiv rostra (those also analysed for aDNA) were cleaned by sandblaster, crushed by percussion mortar and de-fatted by ultrasonication in 8 ml of a 2 : 1 chloroform:methanol mixture (changed every 15 min until the liquid remained clear ( $\leq 5$  rinses)). The process was then repeated with 8 ml of a 2 : 1 methanol:chloroform mixture. Using the Privat *et al.* [55] protocol, with modifications, the samples were: demineralized in 0.5 M aq. hydrochloric acid at 4°C, gelatinized in a pH 3 aqueous solution for 48 h at 75°C, filtered with Ezeefilters and lyophilized. The samples were not ultrafiltered as this procedure reduces collagen yields and alters amino acid compositions without successfully removing contaminants [56]. Subsamples of the resulting 'collagen' were weighed ( $0.8 \pm 0.1$  mg) in triplicate into tin capsules and carbon and nitrogen isotope analysis conducted in the Godwin Laboratory, Department of Earth Sciences, University of Cambridge, using an automated Costech elemental analyser coupled in continuous-flow mode to a ThermoFinnigan Delta V isotope-ratio monitoring mass spectrometer. Measurement errors are less than  $\pm 0.2\%$  for  $\delta^{13}\text{C}$  and  $\delta^{15}\text{N}$ , based on replicate analyses of laboratory and international standards.

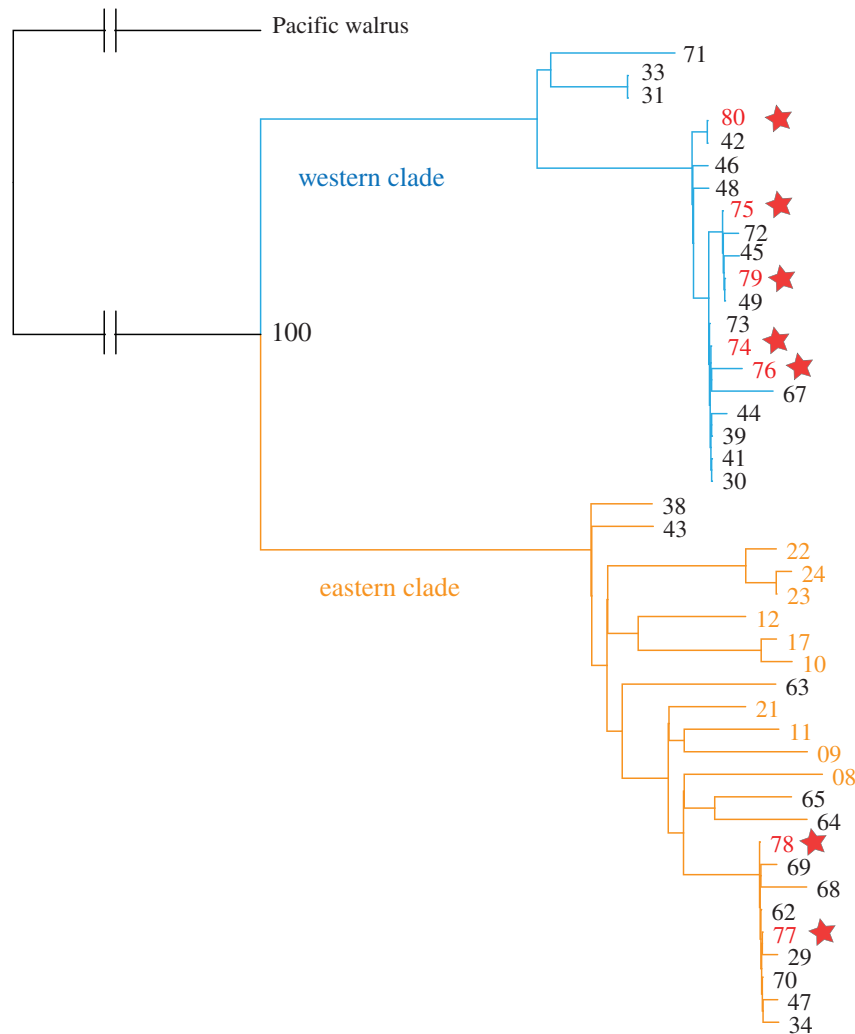
Sulfur and hydrogen isotopic analysis, by elemental analyser-isotope ratio mass spectrometry, was performed by Iso-Analytical Limited (Ian Begley pers comm.) on subsamples of the collagen analysed for  $\delta^{13}\text{C}$  and  $\delta^{15}\text{N}$ . Procedures followed those described in Barrett *et al.* [3]. The  $\delta^2\text{H}$  values of the collagen samples were provided both as measured (non-exchangeable plus exchangeable hydrogen) and following correction for exchangeable hydrogen by three-point linear calibration using United States Geological Survey standards. Hereafter in this paper,  $\delta^2\text{H}$  refers to non-exchangeable  $\delta^2\text{H}$ .

Stable isotope data and standards are provided in electronic supplementary material, table S2. The data are reported using the international scales Vienna Pee Dee Belemnite (VPDB) for carbon, air (AIR) for nitrogen [57], Vienna Canyon Diablo Troilite (VCDT) for sulfur and Vienna Standard Mean Oceanic Water (VSMOW) for hydrogen [57,58].

The isotopic results for the Kyiv samples are compared to published data regarding 25 walrus samples with  $\delta^{13}\text{C}$ ,  $\delta^{15}\text{N}$ ,  $\delta^2\text{H}$  and  $\delta^{34}\text{S}$  measurements. Eighteen of these samples were from traded mediaeval rostra found in Northwestern Europe, 15 of which have been attributed to either the eastern (5) or western (10) genetic clade. The western clade specimens are certain to have arrived in Europe via Norse Greenland, and it is inferred by Barrett *et al.* [3] that four of the five eastern clade examples probably also did so. Four control specimens (two eastern clade and two western clade) were from rostra excavated at the mediaeval site of Igaliku/Gardar in Greenland. The final three previously published specimens represent archaeological control samples from the Barents Sea region: two from Iversfjord in Finnmark and one from Russekeila in Svalbard.

To augment this comparative dataset, seven new control samples were analysed following the protocol noted above. Five were from the tusk sockets of skulls originally collected from a historical kill site (*ca* 1850 CE) on the island of Mofen, Svalbard. Two were from a skull fragment (871–1226 CE) and a pelvis (1226–1500 CE) excavated at Alþingisreitir in Iceland [59]. The five Mofen samples could be sexed based on aDNA and/or bone measurements (electronic supplementary material, table S2). One of the two Icelandic specimens could be sexed based on aDNA (electronic supplementary material, table S2) [60].

Collagen preservation was evaluated for all stable isotope samples [61–64]. For carbon and nitrogen, we considered collagen yield, %C, %N and atomic C/N ratio. Collagen yields ranged from 1.8% to 21.3%. All samples had  $\geq 24.0\%$ C and  $\geq 8.6\%$ N. All atomic C/N ratios are within the traditionally



**Figure 2.** Maximum-likelihood phylogenetic tree of 44 ancient and historic Atlantic walrus specimens. The tree locations of seven specimens from Kyiv (red) are indicated with a star. All control samples from Svalbard (orange) fall into the eastern clade (orange branches). Five specimens from Kyiv fall in the western clade (blue branches) which is geographically restricted to western Greenland and Arctic Canada. The two main clades are significantly distinct (100% statistical bootstrap support). The branch length to the Pacific walrus (here used as an outgroup) is not to scale. Specimen numbers refer to those published by Barrett *et al.* [3] and in electronic supplementary material, table S2, with the omission of the prefix R. (Online version in colour.)

accepted range for well-preserved collagen (2.9–3.6) and also conform with the more stringent criteria ( $\leq ca$  3.35) of Guiry and Szpak [64]. Following van der Sluis *et al.* [52],  $\delta^2\text{H}$  values were accepted for collagen samples which passed the quality assessment criteria used for carbon and nitrogen. For sulfur, atomic C/S ratios of  $600 \pm 300$  and atomic N/S ratios of  $200 \pm 100$  have been proposed as quality control thresholds for mammals [63]. Only samples falling within these ranges are included in the present study.

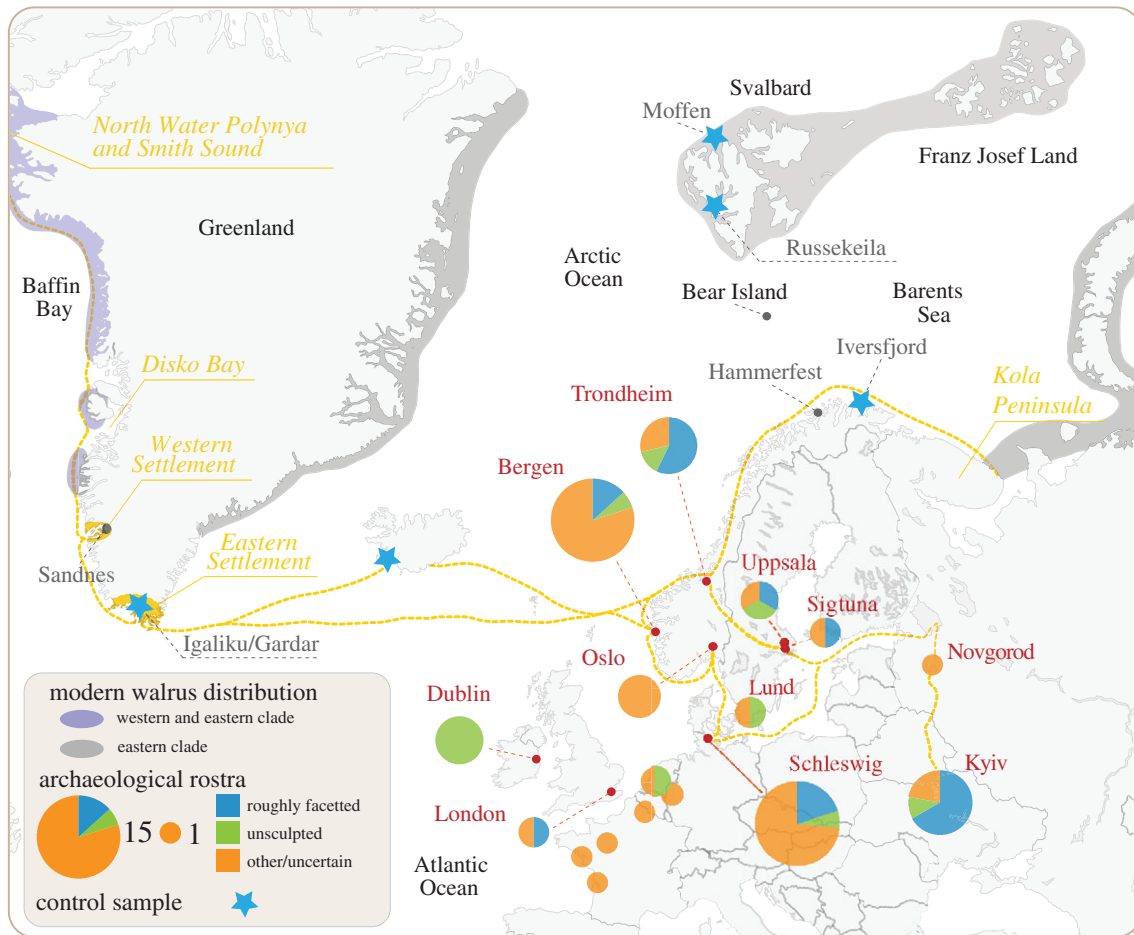
Additional stable isotope measurements have been published for bone collagen from Atlantic walrus (e.g. [53,65]), but in no other case are there matching values for  $\delta^{13}\text{C}$ ,  $\delta^{15}\text{N}$ ,  $\delta^2\text{H}$  and  $\delta^{34}\text{S}$  that satisfy all of the above-mentioned quality control criteria. Comparison with data from known mediaeval rostra found in Western Europe is ideal; it offers the potential to evaluate whether or not the mediaeval eastern European examples from Kyiv are likely to have derived from the same sources (most Western European examples have previously been interpreted as imports from Norse Greenland [3]). The stable isotope data are compared using t-tests (with Holm correction for multiple tests) and principal component analysis (PCA), conducted in R with rstatix 0.0.7 [66] and FactoMineR 2.4, respectively [67]. The number of specimens involved is not conducive to sample classification using machine learning approaches. Specimens falling within the 95% confidence ellipsis

(principal components 1 and 2) of stable isotope data from rostra attributed to the western aDNA clade are considered possible candidates for trade via the Norse colony of Greenland.

### 3. Results

The seven Kyiv rostra specimens studied using stable isotope and aDNA analysis represent separate individual walruses based on osteological criteria and their unique mitochondrial haplotypes (figure 2). Body size and bone portion show that the two other Kyiv fragments are also unlikely to belong to any of the other skulls. Combined osteometric and aDNA evidence indicates that five of the Kyiv rostra represent males and two females (electronic supplementary material, table S2). The two specimens not subjected to aDNA or isotope analysis were too fragmentary to take tusk-socket measurements and are unsexed.

Six of the nine Kyiv rostra exhibit a modification (rough faceting of the tusk sockets) characteristic of types 2 and 3 as described above; one clearly belongs to type 2, with the others being of type 2 or 3 (electronic supplementary material, table S1). A single Kyiv rostrum specimen is a



**Figure 3.** Distribution of mediaeval European finds of walrus rostra, showing the proportion of roughly faceted (type 2 or 3) and unsculpted (type 1) examples in each location. Potential mediaeval trade routes are also shown. Stars mark the locations of control samples from Greenland, Iceland, Finnmark and Svalbard. The modern distributions of the eastern and western genetic clades of Atlantic walrus are shaded. In previous times, walrus were also found as far west as the Hammerfest area in Finnmark, around Iceland, and as far south as the former Western Settlement in western Greenland. Base map after Barrett *et al.* [3] and references therein.

partial tusk socket without faceting; it is therefore probably of type 1. The remaining two Kyiv finds are too fragmentary to elucidate how they were or were not sculpted.

A maximum-likelihood tree based on aDNA of the Kyiv rostra places five specimens (one of type 2, three of type 2/3 and one of uncertain type) in the western clade and two (one of type 2/3 and one probably of type 1) in the eastern clade (figure 2; electronic supplementary material, figure S2 and table S2).

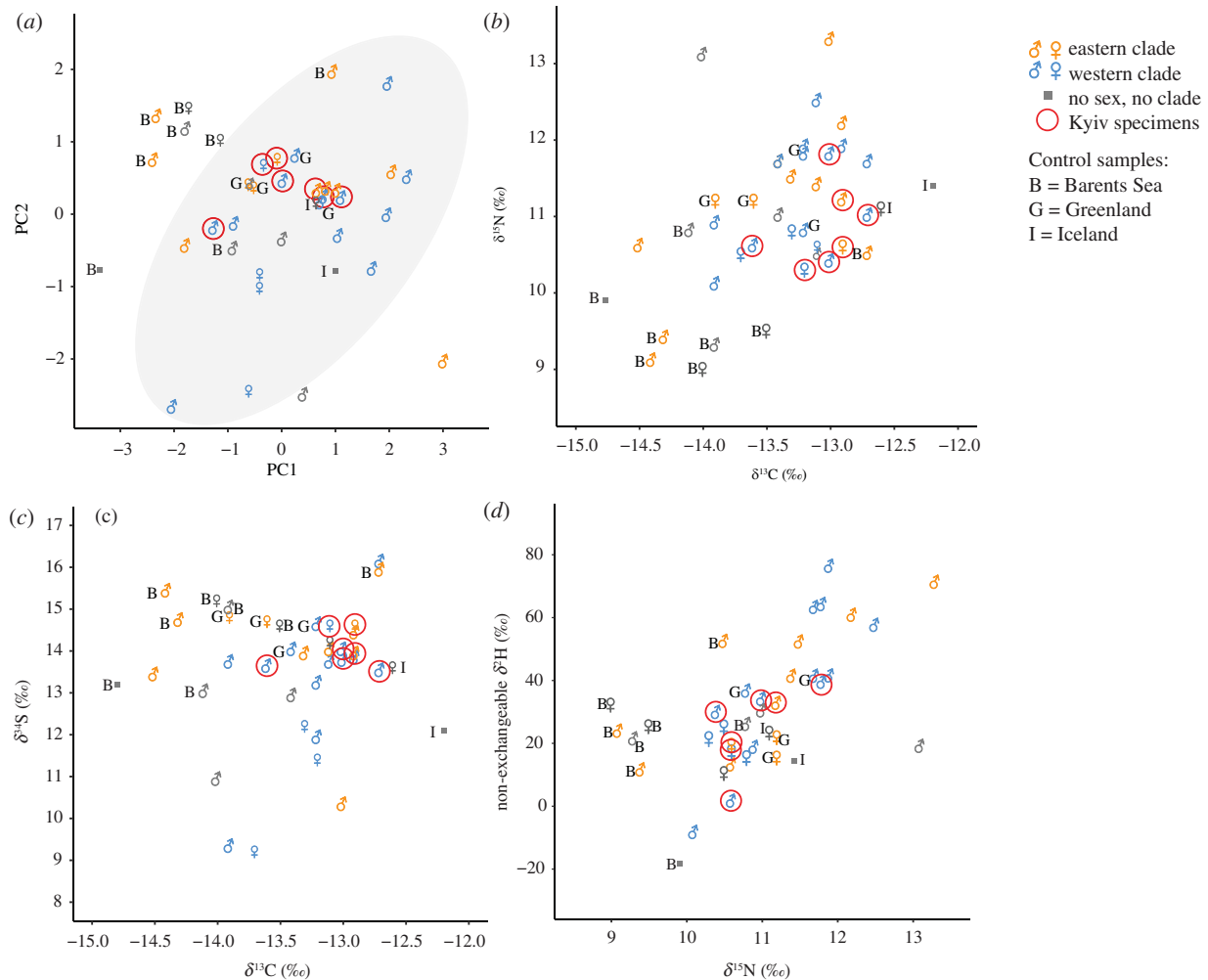
The Kyiv samples have narrow ranges of stable isotope values:  $-12.7$  to  $-13.6$  for  $\delta^{13}\text{C}$ ,  $10.4$  to  $11.8$  for  $\delta^{15}\text{N}$ ,  $13.5$  to  $14.6$  for  $\delta^{34}\text{S}$  and  $1.2$  to  $39.0$  for  $\delta^2\text{H}$ . These measurements fall within the ranges of stable isotope data from comparison samples of the western genetic clade (figure 4). When all eastern genetic clade specimens are combined, the Kyiv data also fall within the overall stable isotope ranges of samples from this group (figure 4). However, the eastern clade is widely distributed from Arctic Europe to Greenland and Canada, so comparison at a finer geographical scale is pertinent. The Kyiv samples have significantly higher  $\delta^{15}\text{N}$  and  $\delta^{13}\text{C}$  values than control samples from the Barents Sea region ( $\delta^{15}\text{N}$ :  $t = -4.04$ , d.f. = 12.70,  $p = 0.003$ ;  $\delta^{13}\text{C}$   $t = -3.75$ , d.f. = 9.89,  $p = 0.008$ ). More generally, samples of the western genetic clade also have higher  $\delta^{15}\text{N}$  and  $\delta^{13}\text{C}$  values than those of the Barents Sea ( $\delta^{15}\text{N}$ :  $t = -5.30$ , d.f. = 17.4,  $p < 0.001$ ;  $\delta^{13}\text{C}$   $t = -3.06$ , d.f. = 8.77,  $p = 0.014$ ). Partial separation between

western clade and Barents Sea walrus is evident in the PCA analysis of the four measured isotopes, with the Kyiv specimens falling within the 95% CI of the western clade. Lastly, the Iceland control samples overlap with the Kyiv stable isotope values in all cases except for  $\delta^{13}\text{C}$  (figure 4) but are too few ( $n = 2$ ) to be amenable to further statistical analysis.

#### 4. Discussion and conclusion

Mediaeval rostra of types 2 and 3 from Greenland and Western Europe have previously been demonstrated to be Greenlandic based on find location and/or attribution to the western aDNA clade [1,3]. Thus, assignment of six Kyiv specimens (five analysed by aDNA and stable isotopes, plus one other) to these types is potentially an indicator of origin. However, the typology of the Kyiv specimens alone is not definitive indication of a Greenlandic source. The same modifications could have been copied elsewhere and other mediaeval Western European rostra assigned to types 2 and 3 are of the widely distributed eastern genetic clade [1,3].

Based on our aDNA evidence and existing knowledge of walrus distributions [1,2,68], the five rostra from Kyiv assigned to the western clade can be confidently attributed to Greenland or the eastern Canadian Arctic (figure 3); they



**Figure 4.** (a) Principal component analysis (PC1 and PC2, accounting for 80% of the variance) based on stable isotope values for archaeological walrus rostra and control samples. The variables included are  $\delta^{13}\text{C}$ ,  $\delta^{15}\text{N}$ , non-exchangeable  $\delta^2\text{H}$  and  $\delta^{34}\text{S}$ . The 95% CI for all specimens of the western genetic clade is shaded in grey. (b–d) Stable isotope values for archaeological walrus rostra and control samples: (b)  $\delta^{13}\text{C}$  and  $\delta^{15}\text{N}$ , (c)  $\delta^{13}\text{C}$  and  $\delta^{34}\text{S}$  and (d)  $\delta^{15}\text{N}$  and non-exchangeable  $\delta^2\text{H}$ . Symbols indicate sex and genetic clade where known. For all plots, the Kyiv specimens are circled, and labels indicate the origin of control samples (B is the Barents Sea region, G is Greenland and I is Iceland).

were almost certainly traded via Norse Greenland. The origin of the two eastern clade specimens (R71, R72) cannot be ascertained based on aDNA evidence alone, although eastern clade specimens could also be obtained from western Greenland [1].

The stable isotope evidence from the seven Kyiv specimens analysed using this method is also compatible with a Greenlandic origin, although not exclusively so. When compared (using PCA) with previously studied finds from Greenland and Western Europe, and control samples collected in the Barents Sea region and Iceland, the stable isotope results of the Kyiv rostra all fall within the 95% confidence ellipsis of western (i.e. Greenlandic/Canadian) aDNA clade samples (figure 4). However, the stable isotope control data do not show complete separation by origin. The two Icelandic control samples also fall within the 95% stable isotope confidence ellipsis of western aDNA clade samples, and two of eight control samples from the Barents Sea region also do so.

In summary, it can be confidently inferred using aDNA, supplemented by typological and stable isotope evidence, that five of the nine Kyiv rostra reached the city via Norse Greenland (R64, R65, R66, R73, R74). With much less certainty, based on typology and/or stable isotopes, three additional specimens may also have done so (R71, R73,

R76). There is insufficient evidence to evaluate the origin of the ninth specimen, which could not be studied using aDNA, stable isotopes or typology (R75).

Six of the Kyiv rostra exhibit roughly faceted tusk sockets characteristic of types 2 and 3 (cf. figure 1 and electronic supplementary material, figure S1). This modification is known from Western European hubs, especially Trondheim and Schleswig, where walrus ivory from Norse Greenland was redistributed (figure 3). Both Trondheim and Schleswig peaked as trade centres in the twelfth-century, the date of the Kyiv specimens [69,70]. It may be relevant that Fisher's exact tests show no significant differences in the representation of rostra types between Kyiv and Trondheim ( $p=1$ ) or Kyiv and Schleswig ( $p=0.068$ ), whereas comparisons with other mediaeval towns having  $\geq 5$  rostra are significant (Dublin  $p=0.024$ ; Bergen  $p=0.039$ ) ( $p$ -values incorporate Holm corrections for multiple tests). From Trondheim, rostra could have been shipped south along a coastal route to Schleswig or east to Sigtuna via a longstanding overland trade route [7,71]. Both Schleswig and Sigtuna have produced distinctive artefacts (e.g. ceramic resurrection eggs) showing trade links with Kyiv and Novgorod [72]. From Schleswig and Sigtuna, trade to Eastern Europe followed the Gulf of Finland and Lake Ladoga. The Rivers Volkhov and Dnieper

then led merchants to Novgorod and Kyiv. Although only one mediaeval rostrum is known from Novgorod, this city has produced much twelfth-century walrus ivory [9,10].

Unlike Novgorod, excavations in Kyiv have thus far yielded only a few walrus *ivory* objects [11,12]. Yet, tusks were clearly extracted on the riverside at or near the 35 Spaska Street site in the Podil district. This part of the lower town served as a market and manufacturing area. It was situated on flat land between the Pochaina and Dnieper rivers on the one hand, and the Kyiv Hills on the other. The Pochaina creek provided a natural harbour, and thus Podil was one of the first districts of the city to develop, with craft workshops, a trade area, churches, cemeteries and dwellings. The Spaska excavation was near the former harbour, being located very close to the mouth of the no-longer extant Pochaina. Horizons 5 and 6, where the walrus rostra were excavated, revealed many imported artefacts of mid to late twelfth-century date, from both north (e.g. Germany) and south (e.g. Byzantium) [20–22].

It is likely that walrus ivory was prepared for onward trade at 35 Spaska. The cultural and trade connections of mediaeval Kyiv are typically discussed in terms of strong links with Byzantium [23]. This trade included some walrus ivory, based on archaeological and historical evidence; examples are a gaming piece from Silistra, Bulgaria, and a mid-twelfth-century Byzantine reference to an ink stand (attributed to Rus' craftsmanship) made of 'fish bone', probably walrus tusk [16,73]. Most Byzantine ivories were instead of elephant tusk [74], but, as discussed above, 'fish teeth' (walrus tusks) were highly valued in Western and Central Asia. The earliest, tenth- and eleventh-century, Arabic authorities to mention the trade of 'fish teeth' to Asia (e.g. al-Muqaddasī and al-Bīrūnī) refer to the intermediary role of Bulghār on the River Volga [14,15,75], rather than the Kyivan Rus' on the Dnieper. However, Viking Age trade between Scandinavia and the Volga declined in the eleventh century [15,76]. Based on the rostra finds reported here, it is reasonable to hypothesize that a Dnieper route may have augmented or replaced pre-existing practices. Little can yet be said of the origin of earlier 'fish teeth' traded along the Volga. Nevertheless, it may not be a coincidence that the earliest reliably dated account is thought to be that of al-Muqaddasī attributed to 985–990 CE [75,77]; Norse Greenland was settled *ca* 985 CE [8]. We can now hypothesize that—although traded through Russia and Ukraine—many of these 'fish teeth' may also have ultimately been from Greenland.

Our observations indicate that demand for the products of Norse Greenland's walrus hunt stretched (counterintuitively, given closer populations in the Barents and Kara Seas [78,79]) to Ukraine and perhaps also onward to Byzantium and Asia. This discovery helps explain previously published evidence for depletion of the Greenlandic walrus population during the years of Norse occupation [3]. Study of mediaeval rostra from Western Europe has shown that by the thirteenth to fourteenth centuries CE, smaller (more often female) walrus were harvested—increasingly of a genetic clade that is most common in the northernmost area of western Greenland and in the eastern Canadian Arctic [3]. Moreover, Norse artefacts from the thirteenth to fourteenth centuries have been found in the extreme north, as far as Smith Sound and Ellesmere Island [80–82], implying the need for increasingly long-range hunting and/or trading with the indigenous peoples of the Arctic.

The Kyiv rostra pre-date this evidence for serial depletion and the sex ratio (five males, two females) is consistent with the preference for large male walrus prior to the thirteenth to fourteenth centuries. Yet the finds are evidence of an expanding demand for Greenland's walrus that drove a wildlife trade with widespread consequences. These consequences (e.g. the viability of the Norse colony of Greenland [3]) were felt by hunted and hunters, traders and townspeople, artisans and patrons, along extensive networks stretching from the High Arctic to the banks of the Dnieper and beyond. The Kyiv walrus illuminate the surprising antiquity of ecological globalization on an intercontinental scale and the pertinence of historical ecology research to understanding wildlife population history and human socio-ecological systems alike.

**Ethics.** For the samples analysed here, permission was kindly granted by the Institute of Archaeology of the National Academy of Sciences of Ukraine, the former Centre of Archaeology of Kyiv, the Department of Natural History of the University Museum of Bergen and the National Museum of Iceland. Where relevant, CITES export, re-export and import permits (19NO-0020-EX, 19NO-0041-RX, 584931/01, 584931/02 and 584931/03) were granted for cross-border transport.

**Data accessibility.** Archaeological, osteometric and stable isotope data for the walrus specimens analysed here are provided as electronic supplementary material, tables S1 and S2 [83]. Summary aDNA data are provided as electronic supplementary material (electronic supplementary material, table S2) [83], and raw sequence data are available from the European Nucleotide Archive (ENA) with the following accession numbers: PRJEB25536 and PRJEB48103.

**Authors' contributions.** J.H.B.: conceptualization, formal analysis, funding acquisition, investigation, methodology, visualization, writing—original draft, writing—review and editing; N.K.: conceptualization, formal analysis, funding acquisition, investigation, methodology, resources, visualization, writing—original draft, writing—review and editing; G.F.: formal analysis, investigation, methodology, writing—review and editing; A.C.: formal analysis, investigation, methodology, writing—review and editing; C.K.: formal analysis, investigation, methodology, writing—original draft, writing—review and editing; A.K.H.: resources, writing—review and editing; A.H.P.: resources, writing—review and editing; B.S.: conceptualization, formal analysis, funding acquisition, investigation, methodology, visualization, writing—original draft, writing—review and editing.

All authors gave final approval for publication and agreed to be held accountable for the work performed therein.

**Competing interests.** We declare we have no competing interests.

**Funding.** The research was supported by the Leverhulme Trust (Northern Journeys, MRF-2013-065), the McDonald Institute for Archaeological Research and the Research Council of Norway (Catching the Past, 262777). This project has received funding from the European Research Council (ERC) under the European Union's Horizon 2020 research and innovation programme (4-OCEANS, grant agreement no. 951649).

**Acknowledgements.** We thank M. Sagaydak for assistance during sampling and recording at the former Kyiv Centre of Archaeology (now part of the Institute of Archaeology, National Academy of Sciences of Ukraine). We are grateful for the computational resources provided by Saga (Sigma2) through allocations to the Centre for Ecological and Evolutionary Synthesis at the University of Oslo. We also thank M. Skage, S. Kollias, M. S. Hansen and A. Tooming-Klunderud from the Norwegian Sequencing Centre for sequencing. J. Rolfe (Cambridge) assisted with the isotope ratio mass spectrometry. T. O'Connell (Cambridge) facilitated use of the Dorothy Garrod Laboratory for Isotopic Analysis. The hydrogen and sulfur isotope analysis was conducted by Iso-Analytical Limited (I. Begley). V. Hilberg, N. Mehler and M. Roslund assisted with information regarding the distribution of Kyivan resurrection eggs.

- Star B, Barrett JH, Gondek AT, Boessenkool S. 2018 Ancient DNA reveals the chronology of walrus ivory trade from Norse Greenland. *Proc. R. Soc. B* **285**, 20180978. (doi:10.1098/rspb.2018.0978)
- Keighley X, Pálsson S, Einarsson BF, Petersen A, Fernández-Coll M, Jordan P, Olsen MT, Malmquist HJ. 2019 Disappearance of icelandic walruses coincided with Norse settlement. *Mol. Biol. Evol.* **36**, 2656–2667. (doi:10.1093/molbev/msz196)
- Barrett JH, Boessenkool S, Kneale CJ, O'Connell TC, Star B. 2020 Ecological globalisation, serial depletion and the medieval trade of walrus rostra. *Quat. Sci. Rev.* **229**, 106122. (doi:10.1016/j.quascirev.2019.106122)
- Roesdahl E. 1998 L'ivoire de morse et les colonies norroises du Groenland. *Prox. Thule* **3**, 9–48.
- Frei KM *et al.* 2015 Was it for walrus? Viking Age settlement and medieval walrus ivory trade in Iceland and Greenland. *World Archaeol.* **47**, 439–466. (doi:10.1080/00438243.2015.1025912)
- Knutson SA. 2021 Itinerant assemblages and material networks: the application of assemblage theory to networks in archaeology. *J. Archaeol. Meth. Theory* **28**, 793–822. (doi:10.1007/s10816-020-09494-3)
- Barrett JH. 2021 The exploitation of walrus ivory in medieval Europe. In *The Atlantic walrus: multidisciplinary insights into human–animal interactions* (eds X Keighley, MT Olsen, P Jordan, S Desjardins), pp. 169–196. Amsterdam, The Netherlands: Academic Press.
- Arneborg J. 2021 Early European and Greenlandic walrus hunting: motivations, techniques and practices. In *The Atlantic walrus: multidisciplinary insights into human–animal interactions* (eds X Keighley, MT Olsen, P Jordan, S Desjardins), pp. 149–168. Amsterdam, The Netherlands: Academic Press.
- Smirnova L. 2001 Utilization of rare bone materials in medieval Novgorod. In *Crafting bone: skeletal technologies through time and space* (eds AM Choyke, L Bartosiewicz), pp. 9–17. Oxford, UK: Archaeopress.
- Smirnova L. 2005 *Comb-making in medieval Novgorod (950–1450): an industry in transition*. Oxford, UK: British Archaeological Reports International Series S1369, Hadrian Books.
- Сагайдак МА, Хамайко НВ, Вергун ОИ. 2008 Новые находки древнерусских игральнх фигурок из Киева. In *Стародавній Іско-ростень і слов'янські гради II* (ed. ОП Моця), pp. 137–145. Коростень (Korosten): ІА НАН України.
- Khamaiko N. 2018 Gaming pieces from recent excavations of the Kyiv Podil. In *The cultural role of chess in medieval and modern times: 50th anniversary jubilee of the Sandomierz chess discovery* (ed. A Stempin), pp. 149–156. Poznań, Poland: Muzeum Archeologiczne w Poznaniu.
- Laufer B. 1913 Arabic and Chinese trade in walrus and narwhal ivory. *Young Pao, Second Ser.* **14**, 315–364.
- Ettinghausen R. 1950 *Studies in muslim iconography I. The unicorn*. Washington, DC: Freer Gallery of Art.
- Gillman ME. 2017 A tale of two ivories: elephant and walrus. In *Treasures of the sea: art before craft?* (ed. A Shalem), pp. 81–105. Madrid, Spain: Universidad Nacional de Educación a Distancia.
- Shepard J. 1979 Tzetzes' letters to Leo at Dristra. *Byz. Forsch.* **6**, 191–239.
- Tegengren H. 1962 Valrosstanden i världshandeln. *Nord.-samf. Tidskr.* **22**, 3–37.
- Roesdahl E. 2005 Walrus ivory—demand, supply, workshops, and Greenland. In *Viking and Norse in the North Atlantic* (eds A Mortensen, SV Arge), pp. 182–191. Tórshavn, Denmark: Føroya Fróðskaparfelag.
- Seaver KA. 2009 Desirable teeth: the medieval trade in Arctic and African ivory. *J. Glob. Hist.* **4**, 271–292. (doi:10.1017/S1740022809003155)
- Сагайдак МА, Хамайко НВ, Вергун ОI. 2009 Нові дослідження торгівельно-ремісничих садиб давньокіівського Подолу. *Археологічні дослідження в Україні* **2008**, 264–267.
- Сагайдак МА, Хамайко НВ, Комар ОВ, Вергун ОI. 2012 Дослідження давньоруських садиб на Спаській, 35 у м. Київ. *Археологічні дослідження в Україні* **2012**, 265–268.
- Сагайдак МА, Хамайко НВ, Комар ОВ. 2015 Спаський розкоп Давньокіівського Подолу. *Пам'ятки України* **5–6**, 20–31.
- Raffensperger C. 2012 *Reimagining Europe: Kievan Rus' in the medieval world*. Cambridge, MA: Harvard University Press.
- Gilbert M, Bandelt H-J, Hofreiter M, Barnes I. 2005 Assessing ancient DNA studies. *TREE* **20**, 541–544. (doi:10.1016/j.tree.2005.07.005)
- Llamas B, Valverde G, Fehren-Schmitz L, Weyrich LS, Cooper A, Haak W. 2017 From the field to the laboratory: controlling DNA contamination in human ancient DNA research in the high-throughput sequencing era. *STAR* **3**, 1–14.
- Gondek AT, Boessenkool S, Star B. 2018 A stainless-steel mortar, pestle and sleeve design for the efficient fragmentation of ancient bone. *Biotechniques* **64**, 266–269. (doi:10.2144/btn-2018-0008)
- Boessenkool S, Hanghøj K, Nistelberger HM, Der Sarkissian C, Gondek A, Orlando L, Barrett JH, Star B. 2017 Combining bleach and mild pre-digestion improves ancient DNA recovery from bones. *Mol. Ecol. Resour.* **17**, 742–751. (doi:10.1111/1755-0998.12623)
- Ferrari G *et al.* 2021 The preservation of ancient DNA in archaeological fish bone. *J. Archaeol. Sci.* **126**, 105317. (doi:10.1016/j.jas.2020.105317)
- Meyer M, Kircher M. 2010 Illumina sequencing library preparation for highly multiplexed target capture and sequencing. *Cold Spring Harb. Protoc.* **2010**, pdb.prot5448. (doi:10.1101/pdb.prot5448)
- Schroeder H *et al.* 2015 Genome-wide ancestry of 17th-century enslaved Africans from the Caribbean. *PNAS* **112**, 3669–3673. (doi:10.1073/pnas.1421784112)
- Schubert M *et al.* 2014 Characterization of ancient and modern genomes by SNP detection and phylogenomic and metagenomic analysis using PALEOMIX. *Nat. Protoc.* **9**, 1056–1082. (doi:10.1038/nprot.2014.063)
- Lindgreen S. 2012 AdapterRemoval: easy cleaning of next-generation sequencing reads. *BMC Res. Notes* **5**, 337. (doi:10.1186/1756-0500-5-337)
- Li H, Durbin R. 2009 Fast and accurate short read alignment with Burrows–Wheeler transform. *Bioinformatics* **25**, 1754–1760. (doi:10.1093/bioinformatics/btp324)
- Foote AD *et al.* 2015 Convergent evolution of the genomes of marine mammals. *Nat. Genet.* **47**, 272–275. (doi:10.1038/ng.3198)
- Arnason U *et al.* 2002 Mammalian mitogenomic relationships and the root of the eutherian tree. *Proc. Natl Acad. Sci. USA* **99**, 8151–8156. (doi:10.1073/pnas.102164299)
- Dudchenko O *et al.* 2017 De novo assembly of the *Aedes aegypti* genome using Hi-C yields chromosome-length scaffolds. *Science* **356**, 92–95. (doi:10.1126/science.aal3327)
- Schubert M *et al.* 2017 Zonkey: a simple, accurate and sensitive pipeline to genetically identify equine F1-hybrids in archaeological assemblages. *J. Archaeol. Sci.* **78**, 147–157. (doi:10.1016/j.jas.2016.12.005)
- Nistelberger HM, Pálsdóttir AH, Star B, Leifsson R, Gondek AT, Orlando L, Barrett JH, Hallsson JH, Boessenkool S. 2019 Sexing Viking Age horses from burial and non-burial sites in Iceland using ancient DNA. *J. Archaeol. Sci.* **101**, 115–122. (doi:10.1016/j.jas.2018.11.007)
- Bro-Jørgensen MH *et al.* 2021 Sex identification of ancient pinnipeds using the dog genome. *J. Archaeol. Sci.* **127**, 105321. (doi:10.1016/j.jas.2020.105321)
- Jonsson H, Ginolhac A, Schubert M, Johnson PLF, Orlando L. 2013 mapDamage2.0: fast approximate Bayesian estimates of ancient DNA damage parameters. *Bioinformatics* **29**, 1682–1684. (doi:10.1093/bioinformatics/btt193)
- Van der Auwera G, O'Connor B. 2020 *Genomics in the cloud: using docker, GATK, and WDL in terra*. Sebastopol, CA: O'Reilly Media.
- Li H *et al.* 2009 The Sequence Alignment/Map format and SAMtools. *Bioinformatics* **25**, 2078–2079. (doi:10.1093/bioinformatics/btp352)
- Danecek P *et al.* 2011 The variant call format and VCFtools. *Bioinformatics* **27**, 2156–2158. (doi:10.1093/bioinformatics/btr330)



44. Nguyen L-T, Schmidt HA, Von Haeseler A, Minh BQ. 2015 IQ-TREE: a fast and effective stochastic algorithm for estimating maximum-likelihood phylogenies. *Mol. Biol. Evol.* **32**, 268–274. (doi:10.1093/molbev/msu300)
45. Minh BQ, Schmidt HA, Chernomor O, Schrempf D, Woodhams MD, Von Haeseler A, Lanfear R. 2020 IQ-TREE 2: new models and efficient methods for phylogenetic inference in the genomic era. *Mol. Biol. Evol.* **37**, 1530–1534. (doi:10.1093/molbev/msaa015)
46. Vaughan TG. 2017 IcyTree: rapid browser-based visualization for phylogenetic trees and networks. *Bioinformatics* **33**, 2392–2394. (doi:10.1093/bioinformatics/btx155)
47. Freitas C, Kovacs KM, Ims RA, Fedak MA, Lydersen C. 2009 Deep into the ice: over-wintering and habitat selection in male Atlantic walrus. *Mar. Ecol. Prog. Ser.* **375**, 247–261. (doi:10.3354/meps07725)
48. Nehlich O, Barrett JH, Richards MP. 2013 Spatial variability in sulphur isotope values of archaeological and modern cod (*Gadus morhua*). *Rapid Commun. Mass Spectrom.* **27**, 2255–2262. (doi:10.1002/rcm.6682)
49. Vander ZHB, Soto DX, Bowen GJ, Hobson KA. 2016 Expanding the isotopic toolbox: applications of hydrogen and oxygen stable isotope ratios to foodweb studies. *Front. Ecol. Evol.* **4**, 20. (doi:10.3389/fevo.2016.00020)
50. Clark CT, Horstmann L, Vernal AD, Jensen AM, Misarti N. 2019 Pacific walrus diet across 4000 years of changing sea ice conditions. *Quat. Res.* **First View**, 1–17. (doi:10.1017/qua.2018.140)
51. Szpak P, Savelle JM, Conolly J, Richards MP. 2019 Variation in late Holocene marine environments in the Canadian Arctic Archipelago: evidence from ringed seal bone collagen stable isotope compositions. *Quat. Sci. Rev.* **211**, 136–155. (doi:10.1016/j.quascirev.2019.03.016)
52. van der Sluis LG, Reimer PJ, Ogle N. 2019 Adding hydrogen to the isotopic inventory—combining  $\delta^{13}\text{C}$ ,  $\delta^{15}\text{N}$  and  $\delta^2\text{H}$  stable isotope analysis for palaeodietary purposes on archaeological bone. *Archaeometry* **61**, 720–749. (doi:10.1111/arcm.12441)
53. Szpak P, Buckley M. 2020 Sulfur isotopes ( $\delta^{34}\text{S}$ ) in Arctic marine mammals: indicators of benthic vs. pelagic foraging. *Mar. Ecol. Prog. Ser.* **653**, 205–216. (doi:10.3354/meps13493)
54. MacKenzie KM *et al.* 2022 Niches of marine mammals in the European Arctic. *Ecol. Indic.* **136**, 108661. (doi:10.1016/j.ecolind.2022.108661)
55. Privat KL, O'Connell TC, Richards MP. 2002 Stable isotope analysis of human and faunal remains from the Anglo-Saxon cemetery at Berinsfield, Oxfordshire: dietary and social implications. *J. Archaeol. Sci.* **29**, 779–790. (doi:10.1006/jasc.2001.0785)
56. Guiry EJ, Szpak P, Richards MP. 2016 Effects of lipid extraction and ultrafiltration on stable carbon and nitrogen isotopic compositions of fish bone collagen. *Rapid Commun. Mass Spectrom.* **30**, 1591–1600.
57. Hoefs J. 1997 *Stable isotope geochemistry*, 4th edn. Berlin, Germany: Springer.
58. Coplen TB. 2011 Guidelines and recommended terms for expression of stable isotope-ratio and gas-ratio measurement results. *Rapid Commun. Mass Spectrom.* **25**, 2538–2560. (doi:10.1002/rcm.5129)
59. Pálsdóttir AH, Boessenkool S, Star B. 2018 *Ancient DNA sampling report: Walrus bones from Alþingisreitir*. Reykjavík: Landbúnaðarháskóli Íslands.
60. Pálsdóttir AH, Boessenkool S, Star B. 2021 *Ancient DNA sexing of walrus bones from alþingisreitir, Iceland*. Reykjavík: Íslenskar fornleifarannsóknir ehf og Icelandic ZooArch.
61. DeNiro MJ. 1985 Post-mortem preservation and alteration of *in vivo* bone collagen isotope ratios in relation to paleodietary reconstruction. *Nature* **317**, 806–809. (doi:10.1038/317806a0)
62. Ambrose SH. 1990 Preparation and characterization of bone and tooth collagen for isotopic analysis. *J. Archaeol. Sci.* **17**, 431–451. (doi:10.1016/0305-4403(90)90007-R)
63. Nehlich O, Richards MP. 2009 Establishing collagen quality criteria for sulphur isotope analysis of archaeological bone collagen. *Archaeol. Anthropol. Sci.* **1**, 59–75. (doi:10.1007/s12520-009-0003-6)
64. Guiry EJ, Szpak P. 2021 Improved quality control criteria for stable carbon and nitrogen isotope measurements of ancient bone collagen. *J. Archaeol. Sci.* **132**, 105416. (doi:10.1016/j.jasc.2021.105416)
65. Nelson DE, Møhl J, Heinemeier J, Arneborg J. 2012 Stable carbon and nitrogen isotopic measurements of the wild animals hunted by the Norse and the Neo-Eskimo people of Greenland. *J. N. Atl.* **Sp3**, 40–50. (doi:10.3721/037.004.s304)
66. Kassambara A. 2021 rstatix: Pipe-friendly framework for basic statistical tests. 0.7.0. The Comprehensive R Archive Network (CRAN).
67. Le S, Josse J, Husson F. 2008 FactoMineR: an R package for multivariate analysis. *J. Stat. Softw.* **25**, 1–18. (doi:10.18637/jss.v025.i01)
68. Andersen LW, Jacobsen MW, Szpak P. 2021 Molecular advances in archaeological and biological research on Atlantic walrus. In *The Atlantic walrus: multidisciplinary insights into human–animal interactions* (eds X Keighley, MT Olsen, P Jordan, S Desjardins), pp. 215–250. Amsterdam, The Netherlands: Academic Press.
69. Christophersen A. 2020 *Under Trondheim: fortellinger fra bygrunnen*. Trondheim, Norway: Museumsforlaget.
70. Vogel V. 2002 Archäologische Belege für Fernkontakte der Stadt Schleswig im 11.–13. Jahrhundert. In *Haithabu und die frühe stadtentwicklung im nördlichen Europa. Schriften des archäologischen landesmuseums 8* (eds K Brandt, M Müller-Wille, C Radtke), pp. 367–378. Neumünster, Germany: Wachholtz.
71. Hennius A. 2021 *Outlanders? Resource colonisation, Raw material exploitation and networks in middle Iron Age Sweden*. Uppsala, Sweden: Department of Archaeology and Ancient History.
72. Gabriel I. 2010 Kiewer Ostereier. In *Germanische altertumskunde online* (eds S Brather, W Heizmann, S Patzold). Berlin, Germany: De Gruyter.
73. Атанасов Г. 1987 Средновековни костни изделия от Силистра. *Известия на Народния Музей Варна* **23**, 101–114.
74. Cutler A. 1994 *The hand of the master: craftsmanship, ivory, and society in Byzantium (9th–11th centuries)*. Princeton, NJ: Princeton University Press.
75. Lunde P, Stone C. 2012 *Ibn Fadlan and the land of darkness: Arab travellers in the far north*. London, UK: Penguin Books.
76. Jankowiak M. 2020 Contacts between the Islamic world and northern Europe in the pre-Mongol period. In *The Oxford handbook of Islamic archaeology* (eds B Walker, T Insoll, C Fenwick), pp. 355. Oxford, UK: Oxford University Press.
77. Abrahamowicz Z. 1970 The expressions ‘fish-tooth’ and ‘lion-fish’ in Turkish and Persian. *Folia Orient.* **12**, 25–32.
78. Boltunov AN, Belikov SE, Gorbunov YA, Menis DT, Semenova VS. 2010 *The Atlantic walrus of the southeastern Barents sea and adjacent regions: review of the present-day status*. Moscow, Russia: WWF–Russia, Marine Mammal Council.
79. Mäkinen J, Vanhatalo J. 2018 Hierarchical Bayesian model reveals the distributional shifts of Arctic marine mammals. *Divers. Distrib.* **24**, 1381–1394. (doi:10.1111/ddi.12776)
80. Holtved E. 1944 Archaeological investigations in the Thule district I. Descriptive part. *Meddelelser om Grøn.* **141**, 1–308.
81. Schlederermann P, McCullough KM. 2003 Inuit–Norse contact in the Smith Sound region. In *Contact, continuity and collapse: the Norse colonization of the North Atlantic* (ed. JH Barrett), pp. 183–206. Turnhout, Belgium: Brepols.
82. Gulløv H-C. 2016 Inuit–European interactions in Greenland. In *The Oxford handbook of the prehistoric Arctic* (eds M Friesen, O Mason). Oxford, UK: Oxford University Press.
83. Barrett JH, Khamaiko N, Ferrari G, Cuevas A, Kneale C, Hufthammer AK, Pálsdóttir AH, Star B. 2022 Walrus on the Dnieper: new evidence for the intercontinental trade of Greenlandic ivory in the Middle Ages. Figshare.