



# Serum autotaxin levels in chronic disease and acute exacerbation of fibrosing interstitial lung disease

Takuma Isshiki <sup>1</sup>, Hiroshige Shimizu <sup>1</sup>, Susumu Sakamoto <sup>1</sup>, Akira Yamasaki <sup>1</sup>, Shion Miyoshi <sup>1</sup>, Yasuhiko Nakamura <sup>1</sup>, Sakae Homma <sup>2</sup> and Kazuma Kishi <sup>1</sup>

<sup>1</sup>Dept of Respiratory Medicine, Toho University Omori Medical Center, Tokyo, Japan. <sup>2</sup>Dept of Advanced and Integrated Interstitial Lung Diseases Research, School of Medicine, Toho University, Tokyo, Japan.

Corresponding author: Takuma Isshiki ([takuma.ishhiki@med.toho-u.ac.jp](mailto:takuma.ishhiki@med.toho-u.ac.jp))



Shareable abstract (@ERSpublications)

Serum ATX levels are higher in fibrosing ILD than in healthy controls; this is associated with disease progression and outcome. Serum ATX levels decrease at the onset of AE-IPF. <https://bit.ly/3hLR9jN>

Cite this article as: Isshiki T, Shimizu H, Sakamoto S, *et al.* Serum autotaxin levels in chronic disease and acute exacerbation of fibrosing interstitial lung disease. *ERJ Open Res* 2022; 8: 00683-2021 [DOI: 10.1183/23120541.00683-2021].

Copyright ©The authors 2022

This version is distributed under the terms of the Creative Commons Attribution Non-Commercial Licence 4.0. For commercial reproduction rights and permissions contact [permissions@ersnet.org](mailto:permissions@ersnet.org)

Received: 4 Dec 2021

Accepted: 25 Feb 2022

## Abstract

**Background** Autotaxin (ATX) is an ecto-enzyme that catalyses the hydrolysis of lysophospholipids to the lipid mediator lysophosphatidic acid (LPA). LPA/ATX signalling has emerged as a new therapeutic target for pulmonary fibrosis; however, the serum levels and dynamics of ATX during the clinical course of fibrosing interstitial lung disease (ILD) remain unknown. This study sought to examine the serum ATX levels in fibrosing ILD in the chronic phase and in acute exacerbation of idiopathic pulmonary fibrosis (AE-IPF). We aimed to elucidate the association between serum ATX level and clinical characteristics including disease progression and prognosis.

**Methods** In total, 119 patients with fibrosing ILD and 38 healthy volunteers as controls were enrolled in the study and their serum ATX activity was analysed. We also included six male patients with AE-IPF in order to analyse the changes in serum ATX at the onset of AE-IPF.

**Results** Patients with fibrosing ILD showed significantly higher serum ATX levels compared with healthy controls in both sexes. Per cent change in forced vital capacity after 1 year correlated with serum ATX levels in female patients. High serum ATX levels ( $>0.721 \text{ mg} \cdot \text{L}^{-1}$ ) were associated with worse outcome in survival curve and multivariate analysis of male patients. Serum ATX activity decreased after the onset of AE-IPF.

**Conclusion** Serum ATX levels were significantly higher in patients with fibrosing ILD compared with healthy controls, and this was associated with disease progression and outcome. This suggests the potential of serum ATX as a promising biomarker for the treatment of fibrosing ILD.

## Introduction

Fibrosing interstitial lung disease (ILD) is a heterogeneous group of lung disorders characterised by fibrosis in the lung interstitium. Idiopathic pulmonary fibrosis (IPF), a subtype of fibrosing ILD, is a representative phenotype with radiological and/or histopathological usual interstitial pneumonia pattern in which chronic and progressive pulmonary fibrosis of indeterminate cause develops in the lung and finally results in respiratory failure [1]. The clinical course of IPF is usually chronic; however, some patients develop an acute exacerbation of IPF (AE-IPF) with severe worsening of respiratory symptoms and grave prognosis after the onset [2]. Other subtypes of ILD, such as nonspecific interstitial pneumonia (NSIP), connective tissue disease-associated ILD (CTD-ILD), unclassifiable ILD and pleuroparenchymal fibroelastosis also have a progressive fibrotic phenotype [3].

Lysophosphatidic acid (LPA), a bioactive lipid mediator, has been reported to be associated with the development and progression of pulmonary fibrosis through binding to its receptors [4–7]. Autotaxin (ATX) is an extracellular enzyme that catalyses the hydrolytic conversion of lysophospholipids, such as lysophosphatidylcholine (LPC), to LPA by its phospholipase D activity [8]. ATX is highly expressed in the



human fibrotic lung, and pharmacological inhibition of ATX results in attenuation of bleomycin-induced pulmonary fibrosis [9]. The ATX/LPA axis has now emerged as a promising therapeutic target for pulmonary fibrosis, and several clinical studies have been investigating the possible effectiveness of ATX and LPA inhibitors in patients with IPF and progressive fibrosing ILD [10–12]. However, to our knowledge, the association between LPA and ATX levels in blood and the attendant clinical characteristics have not been fully investigated in patients with IPF and other types of fibrosing ILD. Measuring serum ATX levels is more advantageous than LPA measurements in the clinical setting. Primarily, ATX is stable without requiring strict temperature control after sample preparation, while LPA is not stable at room temperature and is only measurable in plasma.

In this study, we aimed to elucidate ATX activity in the chronic phase of fibrosing ILD and after the onset of AE-IPF.

## Methods

### Patients

We recruited 139 patients with fibrosing ILD in the chronic phase (n=119) and after the onset of AE-IPF (n=6) seen at our institution during the period from November 2017 through October 2020. Since four patients had serum available from both the chronic and acute exacerbation phase, 135 patients were enrolled in the study. In addition, 38 volunteers were recruited to participate as healthy controls.

Patient characteristics extracted from the medical records included the following: age, sex, smoking history, laboratory data, pulmonary function test results, final diagnosis of fibrosing ILD, treatment for fibrosing ILD and prognosis. The diagnosis of IPF and other type of fibrosing ILD was determined by using the guidelines of the American Thoracic Society (ATS)/European Respiratory Society (ERS)/Japanese Respiratory Society/Latin American Thoracic Association and the joint statement of the ATS and the ERS [13]. The diagnosis of AE-IPF was based on criteria proposed by the international working group on AE-IPF [2]. The database was locked in October 2020. The institutional review board of Toho University Graduate School of Medicine approved this study (approval number: A20100). All patients and healthy controls provided written informed consent to participate in the study.

### Blood collection and autotaxin quantification

Peripheral blood was collected during the stable phase of fibrosing ILD. Blood collection in AE-IPF was performed at the onset before administered corticosteroid treatment. Peripheral blood samples were obtained from the patients in a tube and centrifuged at 3000 *xg* for 10 min. The resulting supernatant after centrifugation was aliquoted and stored at  $-80^{\circ}\text{C}$ . ATX activity was measured by using fluorescence enzyme immunoassay in a commercial clinical laboratory (SRL, Inc., Tokyo, Japan).

### Data analysis

Continuous variables comprised the unpaired t-test for both groups. Categorical variables were compared using the  $\chi^2$  and Fisher's exact tests. Receiver operating characteristic (ROC) curve analysis was used to determine the optimal cut-off value of serum ATX for prediction of outcome. Worse outcome was defined as death or inability to continue treatment for fibrosing ILD by transfer to either home healthcare or long-term hospital care. We used the Kaplan–Meier method to determine the prognosis. The log-rank test was used to compare the two groups. Hazard ratios along with 95% confidence intervals were calculated using Cox proportional hazards analysis to determine the independent predictor for onset of AE-IPF. All p-values were two-sided, and  $p < 0.05$  was considered to indicate statistical significance. Statistical analysis was performed by using SPSS Statistics for Windows version 27.0 (IBM Corp., Armonk, NY, USA) and GraphPad PRISM version 8.00 (MDF Co., Ltd, San Diego, CA, USA).

## Results

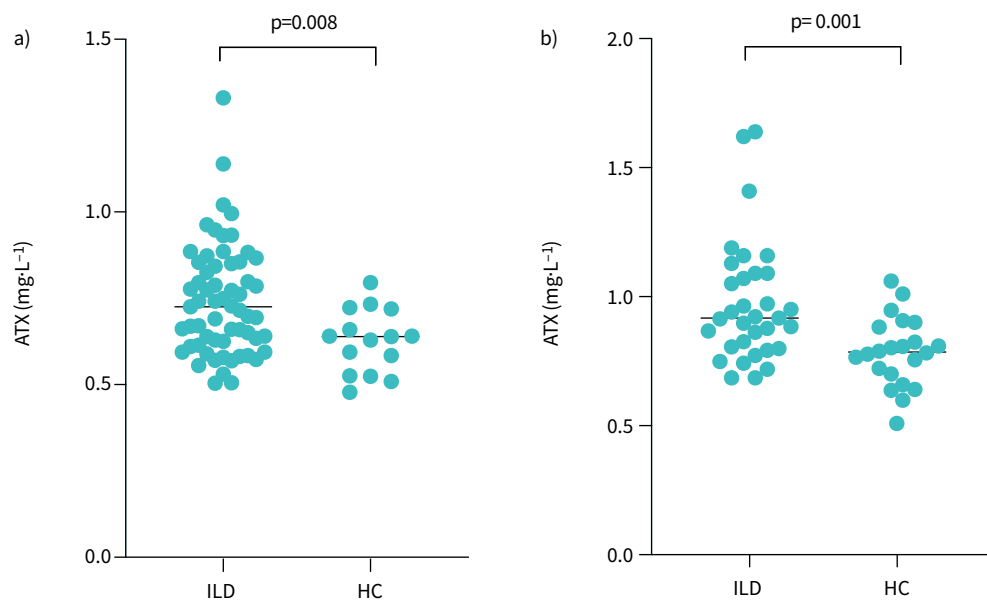
### Baseline characteristics and sex differences

Baseline characteristics of patients with chronic fibrosing ILD are shown in table 1; 78 IPF patients and 41 non-IPF patients were included in the study. We compared serum ATX levels between male and female patients. Higher ATX levels were seen in females compared with male patients ( $0.724 \pm 0.161 \text{ mg} \cdot \text{L}^{-1}$  versus  $0.912 \pm 0.224 \text{ mg} \cdot \text{L}^{-1}$ ;  $p < 0.0001$ ). Thus, for subsequent investigations we divided the patients according to sex. Next, we examined the association of ATX activity and corticosteroid therapy. ATX levels were significantly lower in patients receiving corticosteroid therapy compared with those not receiving corticosteroids in both male and female patients (males:  $0.743 \pm 0.160 \text{ mg} \cdot \text{L}^{-1}$  versus  $0.580 \pm 0.075 \text{ mg} \cdot \text{L}^{-1}$ ,  $p = 0.002$ ; females:  $0.975 \pm 0.236 \text{ mg} \cdot \text{L}^{-1}$  versus  $0.789 \pm 0.137 \text{ mg} \cdot \text{L}^{-1}$ ,  $p = 0.002$ ). We thus excluded those patients receiving corticosteroid therapy for further analysis of chronic fibrosing ILD. No such difference was observed in the presence or absence of treatment with antifibrotic agents including

TABLE 1 Baseline characteristics of patients with stable fibrosing interstitial lung disease (ILD)

	Patients	Healthy controls
Subjects, n	119	38
Age years	70±9	52±11
Sex (male), n (%)	69 (58)	16 (42)
Smoking history (yes), n (%)	73 (61)	11 (29)
<b>Diagnosis of fibrosing ILD, n</b>		
IPF	78	
NSIP	11	
Unclassifiable ILD	10	
PPFE	8	
CTD-ILD	12	
<b>Treatment at the time of analysis, n</b>		
Corticosteroids	25	
Pirfenidone	19	
Nintedanib	15	
<b>Laboratory data</b>		
LDH U·L <sup>-1</sup>	252±54	
KL-6 U·m·L <sup>-1</sup>	1029±680	
SP-D ng·mL <sup>-1</sup>	215±148	
<b>Pulmonary function</b>		
FVC mL	2133±743	
%FVC	75.9±20.4	
D <sub>LCO</sub> %	59.8±20.9	

Data are presented as mean±SD, unless otherwise stated. IPF: idiopathic pulmonary fibrosis; NSIP: nonspecific interstitial pneumonia; CTD-ILD: connective tissue disease-associated ILD; PPFE: pleuroparenchymal fibroelastosis; LDH: lactate dehydrogenase; SP-D: surfactant protein-D; KL-6: Krebs von den Lungen-6; FVC: forced vital capacity; D<sub>LCO</sub>: diffusing capacity of the lung for carbon monoxide.



**FIGURE 1** Autotaxin (ATX) levels in patients with fibrosing interstitial lung disease (ILD) and healthy controls (HC). Fibrosing ILD patients showed significantly increased ATX levels in **a**) male patients ( $0.743\pm 0.160\text{ mg}\cdot\text{L}^{-1}$  versus  $0.626\pm 0.092\text{ mg}\cdot\text{L}^{-1}$ ;  $p=0.008$ ) and **b**) female patients ( $0.975\pm 0.236\text{ mg}\cdot\text{L}^{-1}$  versus  $0.786\pm 0.133\text{ mg}\cdot\text{L}^{-1}$ ;  $p=0.001$ ).

**TABLE 2** Autotaxin (ATX) activity by sex in fibrosing interstitial lung disease (ILD) patients without corticosteroid therapy at the time of blood sampling

Diagnosis of ILD	IPF	NSIP	Unclassifiable ILD	PPFE	CTD-ILD
<b>Male</b>					
Subjects, n	53	3	1	4	0
ATX activity mg·L <sup>-1</sup>	0.746±0.163	0.793±0.221	0.661	0.683±0.988	
<b>Female</b>					
Subjects, n	16	4	3	4	6
ATX activity mg·L <sup>-1</sup>	1.003±0.258	0.933±0.105	1.217±0.376	0.869±0.195	0.876±0.101

Data are presented as mean±SD, unless otherwise stated. IPF: idiopathic pulmonary fibrosis; NSIP: nonspecific interstitial pneumonia; PPFE: pleuroparenchymal fibroelastosis; CTD-ILD: connective tissue disease-associated ILD.

pirfenidone and nintedanib (males: 0.747±0.153 mg·L<sup>-1</sup> versus 0.736±0.176 mg·L<sup>-1</sup>, p=0.681; females: 0.927±0.218 mg·L<sup>-1</sup> versus 0.873±0.243 mg·L<sup>-1</sup>, p=0.229).

### ATX activity in chronic fibrosing ILD

We added a control arm comprising 38 healthy controls to analyse ATX activity in the chronic phase of fibrosing ILD (table 1). Serum ATX levels were compared between patients with fibrosing ILD and healthy controls. Significantly higher ATX levels were seen in both sexes among fibrosing ILD patients compared with healthy controls (figure 1). There were no significant between-group differences in ATX levels among the subtypes of fibrosing ILD (table 2). We then examined the correlation of serum ATX activity with other clinical parameters including laboratory data and pulmonary function (table 3). There was no significant correlation between ATX levels and other clinical parameters at baseline. The per cent predicted change in forced vital capacity (%FVC) after 1 year was correlated with serum ATX levels in female patients.

### Association between ATX activity and outcome

We identified the optimal cut-off value of ATX level for prediction of outcomes by using ROC curve analysis. The cut-off value was determined as 0.721 mg·L<sup>-1</sup> for male (n=61) and as 0.946 mg·L<sup>-1</sup> for female (n=33) patients for predicting death or discontinuation of treatment for fibrosing ILD within 3 years (table 4). Survival curve analysis showed significantly worse prognosis in male patients with high serum ATX activity (>0.721 mg·L<sup>-1</sup>) compared with those with low ATX activity (<0.721 mg·L<sup>-1</sup>) (figure 2a). In addition, multivariate analysis using Cox proportional hazards model revealed that lower %FVC at baseline and high ATX level were independent predictors of worse outcome (table 5). When limited to IPF patients, high serum ATX activity and %FVC was still a significant predictor of outcome (HR 8.288; 95% CI: 1.021–67.256, p=0.048) (online supplementary table 1). However, there was no significant difference in survival between high and low serum ATX levels among female patients (figure 2b).

**TABLE 3** Correlation between autotaxin levels and clinical parameters

	r	p-value
<b>Male (n=61)</b>		
KL-6	-0.117	0.370
SP-D	0.040	0.757
%FVC	-0.093	0.481
D <sub>LCO</sub> %	-0.191	0.146
Δ1 year %FVC (n=28)	0.142	0.472
<b>Female (n=33)</b>		
KL-6	-0.009	0.957
SP-D	0.218	0.223
%FVC	0.051	0.784
D <sub>LCO</sub> %	-0.135	0.471
Δ1 year %FVC (n=13)	-0.676	0.014

KL-6: Krebs von den Lungen-6; SP-D: surfactant protein-D; FVC: forced vital capacity; D<sub>LCO</sub>: diffusing capacity of the lung for carbon monoxide.

**TABLE 4** Receiver operating characteristic (ROC) curve analysis to determine the optimal cut-off value of autotaxin for predicting the worse outcome of fibrosing interstitial lung disease

	Cut-off value $\text{mg}\cdot\text{dL}^{-1}$	AUC	Sensitivity %	Specificity %
Male (n=61)	0.721	0.766	92.9	61.7
Female (n=33)	0.946	0.608	62.5	64.0

AUC: area under curve.

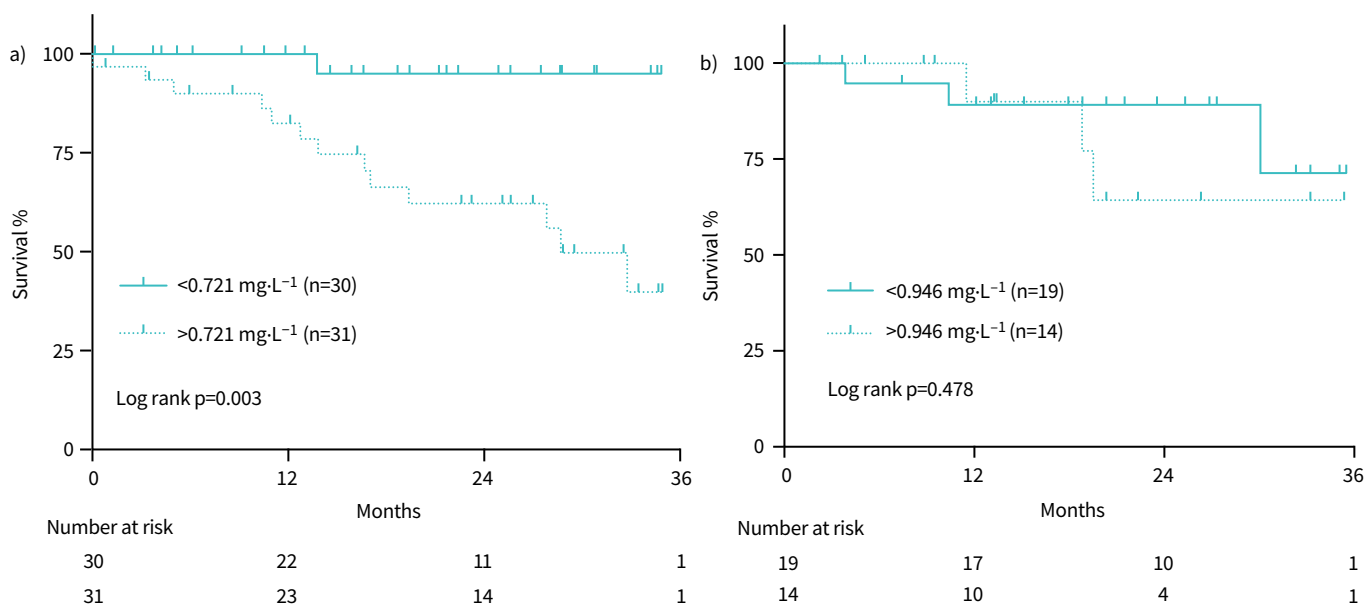
#### ATX activity in acute exacerbation of IPF

Finally, we analysed serum ATX levels in AE-IPF. Clinical characteristics at the onset of AE-IPF and treatment for AE-IPF are shown in table 6. We compared ATX levels between stable male IPF patients without corticosteroid therapy (n=53) and male AE-IPF patients before receiving the first corticosteroid injection (n=6). As shown in figure 3, ATX levels were decreased after AE-IPF onset compared to stable state in male IPF patients ( $0.746\pm 0.163 \text{ mg}\cdot\text{L}^{-1}$  versus  $0.564\pm 0.199 \text{ mg}\cdot\text{L}^{-1}$ ;  $p=0.006$ ).

#### Discussion

This study demonstrated that serum ATX levels were elevated in fibrosing ILD patients compared with healthy controls. High ATX levels were associated with disease progression and worse outcome in fibrosing ILD. Low ATX levels were observed in AE-IPF compared with the stable state.

LPA is a bioactive lipid mediator that consists of a glycerol phosphate backbone with a single fatty acid. LPA binds to specific G protein-coupled receptors and mediates various inflammatory and fibrotic responses.  $\text{LPA}_1$  is the most frequently reported LPA receptor associated with pulmonary fibrosis.  $\text{LPA}/\text{LPA}_1$  signalling has a profibrotic role in epithelial cells, endothelial cells and fibroblasts [4, 6]. Mice with genetic deficiency of  $\text{LPA}_1$  and pharmacological inhibition of  $\text{LPA}_1$  both demonstrated protection from fibrosis in a bleomycin mouse model of pulmonary fibrosis [4, 6]. Also, LPA induced fibroblast reorganisation and proliferation through  $\text{LPA}_2$  signalling.  $\text{LPA}/\text{LPA}_2$  signalling activates transforming growth factor- $\beta$  expression in lung epithelial cells and fibroblasts, leading to myofibroblast differentiation [7].



**FIGURE 2** Survival curve of fibrosing interstitial lung disease (ILD) patients according to serum autotaxin (ATX) levels. **a)** Male patients with high ATX levels ( $>0.721 \text{ mg}\cdot\text{L}^{-1}$ ) showed significantly better outcome than patients with low ATX levels (log rank  $p=0.003$ ). **b)** No such difference in outcome was observed between high ( $>0.946 \text{ mg}\cdot\text{L}^{-1}$ ) and low ATX levels in female patients (log rank  $p=0.478$ ).

**TABLE 5** Multivariate analysis using Cox proportional hazards model for predicting independent predictors of worse outcome in male patients with fibrosing interstitial lung disease (n=61)

	Hazard ratio	95% CI	p-value
Age years	1.005	0.943–1.072	0.868
Smoking history (yes)	1.257	0.156–10.100	0.830
KL-6	0.999	0.998–1.001	0.228
%FVC	0.964	0.930–0.999	0.043
ATX >0.721 mg·L <sup>-1</sup>	8.295	1.049–65.558	0.045

KL-6: Krebs von den Lungen-6; FVC: forced vital capacity; ATX: autotaxin.

ATX is a secreted lysophospholipase D that catalyses the hydrolysis of LPC to LPA by phospholipase D activity. It is abundant in most biological fluids, including blood, bronchoalveolar lavage fluid, cerebrospinal fluid and urine [14]. Immunohistochemical studies revealed that ATX is constitutively expressed in bronchial epithelial cells, alveolar epithelial cells and alveolar macrophages in the lung [9]. Furthermore, ATX showed a higher staining intensity in IPF and fibrotic nonspecific interstitial pneumonia (F-NSIP) lung than in control samples of healthy lung, suggesting that ATX is activated in the fibrotic lung [9]. Genetic deletion and pharmacological inhibition of ATX resulted in attenuation of bleomycin-induced pulmonary fibrosis in a mouse model [9]. Taken together, the LPA/ATX axis has now emerged as a potential therapeutic target in pulmonary fibrosis. Several inhibitors targeting LPA<sub>1</sub> and ATX have now been entered into clinical trials of IPF and other types of fibrosing ILD [10–12]. The FLORA study, a phase 2a randomised placebo-controlled trial of ATX inhibitors in IPF, reported decreased plasma LPA C18:2 levels in the treatment group compared with the placebo group [10]. However, no study has analysed serum ATX levels in fibrosing ILD to date.

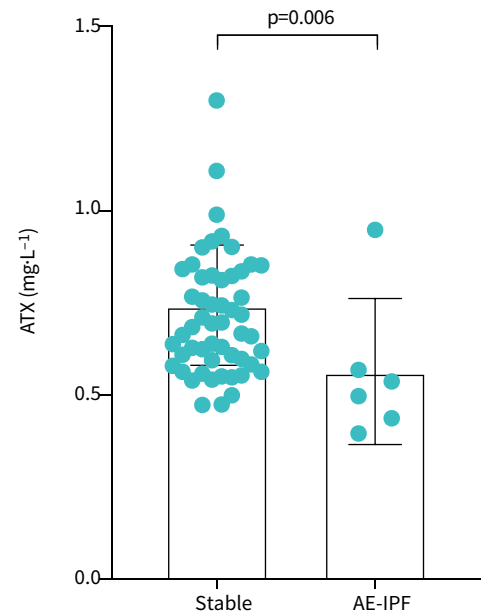
In this study, we showed that serum ATX level is a potential biomarker to predict disease progression and worse outcome in fibrosing ILD. To our knowledge, this is the first report to examine the association of ATX levels with clinical characteristics in fibrosing ILD. Further studies are required to assess the relationship between serum ATX levels and response to LPA/ATX inhibitors if these drugs are proven to be effective.

In terms of utilising blood levels in the clinical setting, serum ATX measurement is preferable to serum LPA. First, ATX is temperature stable after sample preparation [15]. Second, ATX is less affected by metabolic changes such as in diabetes mellitus, chronic kidney disease and food intake [16]. In addition, there were no significant differences between age groups [17]. However, a sex difference in blood ATX levels has been reported [15]. The precise mechanism of this difference is yet to be determined, however; since female subjects and those in pregnancy show high ATX levels in the blood, it might be associated with reproductive biology [15, 18]. In this study, ATX levels were significantly higher in female patients compared with male patients, consistent with previous reports. Therefore, we analysed the association of serum ATX level with clinical characteristics separately in both sexes. Serum ATX level is elevated in pregnancy [18], malignant lymphoma [19] and liver fibrosis [20]. None of the patients in our study were pregnant or had malignant lymphoma or liver fibrosis. Initiation of corticosteroid therapy was reported to decrease ATX levels in a dose-dependent manner [21]. Similarly, in this study, ATX levels were significantly lower in patients receiving corticosteroid therapy compared with those without corticosteroids in both male and female patients. Considering the effect of corticosteroids, patients who were receiving

**TABLE 6** Baseline characteristics of male patients with acute exacerbation of idiopathic pulmonary fibrosis (n=6)

Age years	71±6
$P_{aO_2}/F_{IO_2}$	315±52
LDH U·L <sup>-1</sup>	332±43
KL-6 U·mL <sup>-1</sup>	1808±990
SP-D ng·mL <sup>-1</sup>	318±137
CRP mg·dL <sup>-1</sup>	9.3±10.9

Data are presented as mean±SD.  $P_{aO_2}$ : arterial oxygen tension;  $F_{IO_2}$ : inspiratory oxygen fraction; LDH: lactate dehydrogenase; KL-6: Krebs von den Lungen-6; SP-D: surfactant protein-D; CRP: C-reactive protein.



**FIGURE 3** Autotaxin (ATX) levels in male patients with chronic idiopathic pulmonary fibrosis (IPF) and acute exacerbation of IPF (AE-IPF). ATX levels were significantly decreased after the onset of AE-IPF compared with stable IPF ( $0.746 \pm 0.163 \text{ mg} \cdot \text{L}^{-1}$  versus  $0.564 \pm 0.199 \text{ mg} \cdot \text{L}^{-1}$ ;  $p=0.006$ ).

corticosteroid therapy at the time of serum ATX measurement in chronic fibrosing ILD were excluded from further analysis. No such difference was observed with antifibrotic therapy.

ATX levels were decreased after the onset of AE-IPF. Since corticosteroids are used in all patients for the treatment of AE-IPF in our facility, it is difficult to define how to interpret the usefulness of ATX concentration as a biomarker, which is affected by corticosteroid use. We excluded the patients who had received the first dose of corticosteroids at the time of blood collection. The pathogenesis of AE-IPF characteristically is by increased type II alveolar epithelial cell injury and/or proliferation, coagulation disorders and fibrotic deposition [2, 22]. ATX is mainly expressed in bronchial epithelial cells and alveolar macrophage in the lung [9]. Therefore, a possible explanation for decreased ATX levels in AE-IPF is that severe epithelial damage in AE-IPF resulted in lower expression and production of ATX in bronchial epithelial cells.

This study has several limitations. First, this is a single-centre analysis, and we could not observe longitudinal changes in serum ATX levels in patients with chronic fibrosing ILD. Changes in serum ATX activity would be useful to predict disease progression. Future study with a validation cohort is needed to confirm our findings, since we include a heterogeneous fibrotic ILD phenotype in this study. Second, the healthy controls were younger than the patients and there were less subjects with smoking history. This could have added some potential bias. Sex differences have been reported in several studies, but a previous study showed similar levels among different ages groups [17]. There was no significant difference between patients with or without smoking history in both sexes (data not shown). Third, because of the small number of female patients who were not receiving corticosteroid therapy, we did not perform a multivariate analysis in female patients with fibrosing ILD. Similarly, we could not analyse ATX levels in AE-IPF among female patients.

### Conclusions

In this study, elevated serum ATX levels in fibrosing ILD patients compared with healthy controls and high ATX levels were associated with disease progression and worse outcome. Our findings indicated that serum ATX is a potential blood biomarker for diagnosing and predicting outcome in fibrosing ILD. Inhibitors targeting LPA/ATX signalling have emerged as new treatment candidates for fibrosing ILD. The association of serum ATX with response to LPA and ATX inhibitors should be examined in the future if their utility is to be proven in clinical trials.

Provenance: Submitted article, peer reviewed.

Acknowledgements: We thank Florence Ene for medical English editing.

Author contributions: T. Isshiki had access to the data and takes responsibility for data accuracy. S. Sakamoto, S. Homma and K. Kishi contributed to the design of the study. T. Isshiki, H. Shimizu, A. Yamasaki, Y. Nakamura and S. Miyoshi contributed to data collection. All authors were involved in drafting and revising the manuscript, and gave their final approval of the version to be published.

Conflicts of interest: This study received no specific funding from any company. S. Homma received research grants from Nippon Boehringer Ingelheim Co., Ltd, Shionogi & Co., Ltd, and Chugai Pharmaceutical Co., Ltd. T. Isshiki, S. Sakamoto, A. Yamasaki, H. Shimizu, S. Miyoshi, Y. Nakamura and K. Kishi have no conflicts of interest to declare.

Support statement: This study was supported by Project Research Grant number 20–6 from Toho University School of Medicine with partial support by a grant from the Ministry of Health, Labour and Welfare of Japan, awarded to the Study Group on Diffuse Pulmonary Disorders. Funding information for this article has been deposited with the Crossref Funder Registry.

## References

- 1 Raghu G, Remy-Jardin M, Myers JL, *et al.* Diagnosis of idiopathic pulmonary fibrosis. An Official ATS/ERS/JRS/ALAT Clinical practice guideline. *Am J Respir Crit Care Med* 2018; 198: e44–e68.
- 2 Collard HR, Ryerson CJ, Corte TJ, *et al.* Acute exacerbation of idiopathic pulmonary fibrosis an international working group report. *Am J Respir Crit Care Med* 2016; 194: 265–275.
- 3 Travis WD, Costabel U, Hansell DM, *et al.* An official American Thoracic Society/European Respiratory Society statement: update of the international multidisciplinary classification of the idiopathic interstitial pneumonias. *Am J Respir Crit Care Med* 2013; 188: 733–748.
- 4 Tager AM, LaCamera P, Shea BS, *et al.* The lysophosphatidic acid receptor LPA1 links pulmonary fibrosis to lung injury by mediating fibroblast recruitment and vascular leak. *Nat Med* 2008; 14: 45–54.
- 5 Huang LS, Fu P, Patel P, *et al.* Lysophosphatidic acid receptor-2 deficiency confers protection against bleomycin-induced lung injury and fibrosis in mice. *Am J Respir Cell Mol Biol* 2013; 49: 912–922.
- 6 Funke M, Zhao Z, Xu Y, *et al.* The lysophosphatidic acid receptor LPA 1 promotes epithelial cell apoptosis after lung injury. *Am J Respir Cell Mol Biol* 2012; 46: 355–364.
- 7 Xu MY, Porte J, Knox AJ, *et al.* Lysophosphatidic acid induces  $\alpha\beta 36$  integrin-mediated TGF- $\beta$  activation via the LPA2 receptor and the small G protein G $\alpha_q$ . *Am J Pathol* 2009; 174: 1264–1279.
- 8 Tokumura A, Majima E, Kariya Y, *et al.* Identification of human plasma lysophospholipase D, a lysophosphatidic acid-producing enzyme, as autotaxin, a multifunctional phosphodiesterase. *J Biol Chem* 2002; 277: 39436–39442.
- 9 Oikonomou N, Mouratis MA, Tzouveleki A, *et al.* Pulmonary autotaxin expression contributes to the pathogenesis of pulmonary fibrosis. *Am J Respir Cell Mol Biol* 2012; 47: 566–574.
- 10 Maher TM, van der Aar EM, van de Steen O, *et al.* Safety, tolerability, pharmacokinetics, and pharmacodynamics of GLPG1690, a novel autotaxin inhibitor, to treat idiopathic pulmonary fibrosis (FLORA): a phase 2a randomised placebo-controlled trial. *Lancet Respir Med* 2018; 6: 627–635.
- 11 Palmer SM, Snyder L, Todd JL, *et al.* Randomized, double-blind, placebo-controlled, phase 2 trial of BMS-986020, a lysophosphatidic acid receptor antagonist for the treatment of idiopathic pulmonary fibrosis. *Chest* 2018; 154: 1061–1069.
- 12 Lee G, Kang SU, Ryou J-H, *et al.* Late Breaking Abstract – BBT-877, a potent autotaxin inhibitor in clinical development to treat idiopathic pulmonary fibrosis. *Eur Respir J* 2019; 54: PA1293.
- 13 Raghu G, Collard HR, Egan JJ, *et al.* An Official ATS/ERS/JRS/ALAT statement: idiopathic pulmonary fibrosis: evidence-based guidelines for diagnosis and management. *Am J Respir Crit Care Med* 2011; 183: 788–824.
- 14 Barbayanni E, Kaffe E, Aidinis V, *et al.* Autotaxin, a secreted lysophospholipase D, as a promising therapeutic target in chronic inflammation and cancer. *Prog Lipid Res* 2015; 58: 76–96.
- 15 Nakamura K, Ohkawa R, Okubo S, *et al.* Measurement of lysophospholipase D/autotaxin activity in human serum samples. *Clin Biochem* 2007; 40: 274–277.
- 16 Ikeda H, Kobayashi M, Kumada H, *et al.* Performance of autotaxin as a serum marker for liver fibrosis. *Ann Clin Biochem* 2018; 55: 469–477.
- 17 Usami Y, Ishimine N, Shiba A, *et al.* Performance evaluation of a new liver fibrosis marker autotaxin immunoassay. *Igakukensa* 2019; 68: 99–104.
- 18 Iwasawa Y, Fujii T, Nagamatsu T, *et al.* Expression of autotaxin, an ectoenzyme that produces lysophosphatidic acid, in human placenta. *Am J Reprod Immunol* 2009; 62: 90–95.



- 19 Masuda A, Nakamura K, Izutsu K, *et al.* Serum autotaxin measurement in haematological malignancies: a promising marker for follicular lymphoma. *Br J Haematol* 2008; 143: 60–70.
- 20 Nakagawa H, Ikeda H, Nakamura K, *et al.* Autotaxin as a novel serum marker of liver fibrosis. *Clin Chim Acta* 2011; 412: 1201–1206.
- 21 Sumida H, Nakamura K, Yanagida K, *et al.* Decrease in circulating autotaxin by oral administration of prednisolone. *Clin Chim Acta* 2013; 415: 74–80.
- 22 Collard HR, Calfee CS, Wolters PJ, *et al.* Plasma biomarker profiles in acute exacerbation of idiopathic pulmonary fibrosis. *Am J Physiol Lung Cell Mol Physiol* 2010; 299: L3–L7.