



# The SARS-CoV2 envelope differs from host cells, exposes procoagulant lipids, and is disrupted in vivo by oral rinses

Zack Saud<sup>1,‡</sup>, Victoria J. Tyrrell<sup>1,‡</sup>, Andreas Zaragkoulias<sup>1</sup>, Majd B. Protty<sup>1</sup>, Evelina Statkute<sup>1</sup>, Anzelika Rubina<sup>1</sup>, Kirsten Bentley<sup>1</sup>, Daniel A. White<sup>1</sup>, Patricia Dos Santos Rodrigues<sup>1</sup>, Robert C. Murphy<sup>2</sup>, Harald Köfeler<sup>3</sup>, William J. Griffiths<sup>4</sup>, Jorge Alvarez-Jarreta<sup>5</sup>, Richard William Brown<sup>5</sup>, Robert G. Newcombe<sup>6</sup>, James Heyman<sup>7</sup>, Manon Pritchard<sup>8</sup>, Robert WJ. Mcleod<sup>7</sup>, Arvind Arya<sup>5</sup>, Ceri-Ann Lynch<sup>9</sup>, David Owens<sup>7</sup>, P Vince Jenkins<sup>10</sup>, Niklaas J. Buurma<sup>11</sup>, Valerie B. O'Donnell<sup>1\*</sup>, David W. Thomas<sup>8\*</sup>, and Richard J. Stanton<sup>1\*†</sup>

<sup>1</sup>Division of Infection & Immunity, School of Medicine, Cardiff University, Cardiff, United Kingdom; <sup>2</sup>Department of Pharmacology, University of Colorado Denver, Aurora, CO, USA; <sup>3</sup>Core Facility Mass Spectrometry, Medical University of Graz, Graz, Austria; <sup>4</sup>Medical School, Swansea University, Swansea, United Kingdom; <sup>5</sup>ENT Department, Betsi Cadwaladr University Health Board, Wrexham Maelor Hospital, Wrexham, United Kingdom; <sup>6</sup>Division of Population Medicine, School of Medicine, Cardiff University, Cardiff, United Kingdom; <sup>7</sup>Division of Surgery, Cardiff and Vale University Health Board, Cardiff, United Kingdom; <sup>8</sup>Advanced Therapies Group, School of Dentistry, Cardiff University, Cardiff, United Kingdom; <sup>9</sup>Anaesthetics and Critical Care Directorate, Cwm Taf University Health Board, Royal Glamorgan Hospital, Llantrisant, United Kingdom; <sup>10</sup>Haemostasis Diagnosis and Research, University Hospital Wales, Cardiff, United Kingdom; <sup>11</sup>Physical Organic Chemistry Centre, School of Chemistry, Cardiff University, Cardiff, United Kingdom

**Abstract** The lipid envelope of severe acute respiratory syndrome coronavirus 2 (SARS-CoV-2) is an essential component of the virus; however, its molecular composition is undetermined. Addressing this knowledge gap could support the design of antiviral agents as well as further our understanding of viral-host protein interactions, infectivity, pathogenicity, and innate immune system clearance. Lipidomics revealed that the virus envelope comprised mainly phospholipids (PLs), with little cholesterol or sphingolipids, indicating significant differences from host membranes. Unlike cellular membranes, procoagulant amino-PLs were present on the external side of the viral envelope at levels exceeding those on activated platelets. Accordingly, virions directly promoted blood coagulation. To investigate whether these differences could enable selective targeting of the viral envelope in vivo, we tested whether oral rinses containing lipid-disrupting chemicals could reduce infectivity. Products containing PL-disrupting surfactants (such as cetylpyridinium chloride) met European virucidal standards in vitro; however, components that altered the critical micelle concentration reduced efficacy, and products containing essential oils, povidone-iodine, or chlorhexidine were ineffective. This result was recapitulated in vivo, where a 30-s oral rinse with cetylpyridinium chloride mouthwash eliminated live virus in the oral cavity of patients with coronavirus disease 19 for at least 1 h, whereas povidone-iodine and saline mouthwashes were ineffective. **■** We conclude that the SARS-CoV-

2 lipid envelope *i*) is distinct from the host plasma membrane, which may enable design of selective antiviral approaches; *ii*) contains exposed phosphatidylethanolamine and phosphatidylserine, which may influence thrombosis, pathogenicity, and inflammation; and *iii*) can be selectively targeted in vivo by specific oral rinses.

**Supplementary key words** phospholipids • lipidomics • inflammation • virology • clinical trials • aminophospholipids • coagulation • mouthwash • cetylpyridinium chloride • CPC

The lipid envelope is critical to the structure and function of severe acute respiratory syndrome coronavirus 2 (SARS-CoV2), as for all enveloped viruses, such as influenza, HIV, herpes simplex virus, Middle East respiratory syndrome, and SARS-CoV (1, 2). Yet despite this, the potential of the envelope as an antiviral target has not been exploited, beyond being the target of handwashing and gels, where soap or high concentrations of ethanol (>60%) dissolve the lipids and inactivate the virus. This is in part because, unlike our extensive knowledge of the structure and function of the proteins in the virion (1, 2), there is no information on the lipid composition of the SARS-CoV2 envelope—indeed, viral lipid envelopes overall are surprisingly unstudied, and their detailed lipid composition is unknown.

Coronaviruses bud from the endoplasmic reticulum (ER)/Golgi intermediate complex and exit via lysosomal secretion (3–8), thus the composition of the virion envelope may differ significantly from plasma

<sup>‡</sup>These authors contributed equally to this work.

<sup>\*</sup>For correspondence: Richard J. Stanton, [StantonRJ@cardiff.ac.uk](mailto:StantonRJ@cardiff.ac.uk); Valerie B. O'Donnell, [o-donnellvb@cardiff.ac.uk](mailto:o-donnellvb@cardiff.ac.uk); David W. Thomas, [thomasdw2@cardiff.ac.uk](mailto:thomasdw2@cardiff.ac.uk).

membrane, enabling selective therapeutic targeting that avoids damaging host membranes (9). Furthermore, the envelope is not simply a structural component of the virion, with lipids themselves being potent bioactive molecules. Mammalian cells maintain aminophospholipids (aPLs), such as phosphatidylethanolamine (PE) and phosphatidylserine (PS), in their inner plasma membrane leaflet using energy-dependent enzymes; however, these control mechanisms are not present in the virus. This raises the possibility that the external face is enriched in PE and PS, which are highly prothrombotic, and furthermore could directly promote virion uptake via apoptotic cell mimicry (10–16). Indeed, a recent study showed that PS is present on the surface of the virions and that PS receptors on host cells can support entry (17). However, that study relied on an ELISA method, and neither the amounts nor the molecular species of PS exposed were demonstrated, nor was the presence of PE shown. Phospholipids (PLs) such as lyso-PLs and sphingolipids (SLs)/ceramides (Cers) are proinflammatory effectors (18, 19) and can interact with complement to promote a proinflammatory environment (3, 11, 20), whereas lyso-PLs signal through G protein-coupled receptors causing immune cell migration and apoptosis (21–24). Understanding virion lipid composition therefore has potential to inform our understanding of virus pathogenesis, dissemination, and how the virion promotes transition from early infection to severe inflammatory thrombotic coronavirus disease 2019 (COVID-19).

Following on from public health advice on handwashing, which disrupts the lipid envelope, we considered whether similar approaches using formulations that are nontoxic in vivo could represent potential antiviral strategies directed at reducing SARS-CoV2 transmission and published an evidence review on this topic in 2020 (25). The lipid membranes of enveloped viruses, including some coronaviruses, had previously been shown to be sensitive to disruption by lipidomimetic agents and surfactants (25). Thus, we hypothesized that the SARS-CoV2 virus might also be susceptible to inactivation by components in widely available oral rinses, such as ethanol/essential oils, cetylpyridinium chloride (CPC) and povidone-iodine (PVP-I) (25). If lipid-disrupting components in oral rinses can dissolve the virion envelope, this approach could in theory reduce the risk to health care workers or carers treating individuals asymptotically (or symptomatically) carrying the virus. Early in the pandemic, mouthwashes were employed empirically in outbreaks in China but without evidence of efficacy (26). Since then, a series of studies have emerged indicating that some can inactivate SARS-CoV2 in vitro, including a systematic review (27–32). Furthermore, a recent small study suggested that oral rinsing could shorten hospital stay, whereas another study suggested that oral and nasal rinsing could reduce both disease and symptoms in health care professionals (33, 34).

Recently, World Health Organization included a recommendation that PVP-I could be used to reduce the risk of clinical transmission in dentistry (<https://www.who.int/publications/i/item/who-2019-nCoV-oral-health-2020.1>). However, despite all these encouraging studies, the relative efficacy and the persistence of mouthwashes in vivo is currently unknown. Importantly, in order to most effectively target the virus in the oropharynx, a detailed knowledge of the lipid composition is required, so that the most appropriate formulation is selected.

To address these questions, we used lipidomics to provide the amount and molecular diversity of envelope lipids and the levels of external-facing aPL in virus cultured from two different cell lines. Our data provide the first complete characterization of a viral lipid envelope and show a PL-rich membrane that also contains several lyso-PL but is relatively low in cholesterol, SM, and other lipids. Sufficient aPLs were present to enhance coagulation of plasma in vitro using live virus. Following this, in vitro studies tested the interaction of varying lipid-membrane disrupting mouthwash formulations and components. Importantly, only a subset of rinses demonstrated efficacy, specifically those containing surfactant and polar components. Furthermore, a randomized controlled clinical study in patients with COVID-19 showed the virucidal effect of a surfactant-containing rinse against SARS-CoV2 in hospitalized patients. These studies demonstrate the accessibility and importance of lipids as a potential target for antiviral approaches, which is unlikely to be impacted by mutation of the virus. They also suggest that targeting virus lipids in the oropharynx may be an important component of risk management in health care during the COVID-19 pandemic and in the context of other enveloped respiratory viruses including coronaviruses and seasonal influenza viruses in the future.

## MATERIALS AND METHODS

### Aqueous solutions

CPC was dissolved in deionized water at 0.07% or 0.1% (w/v). For aqueous solutions containing ethyl lauroyl arginate (LAE), a 33 mM stock solution was prepared by dissolving 693.2 mg of *N*-LAE hydrochloride (Fluorochem, used as received) in deionized water (Elga Purelab Flex), adjusting the pH to 7 using an NaOH solution (pH was determined using a Hanna Instruments pH210 microprocessor pH meter with a VWR simple junction universal combined pH/reference electrode) and making up the solution to 50 ml. The required LAE solutions were then prepared by mixing 1 ml of the stock solution and 9 ml of deionized water (3.3 mM), 3 ml of the stock solution and 7 ml of deionized water (9.9 mM), and 1 ml of the stock solution, 6.7 ml of deionized water, and 2.3 ml of ethanol (3.3 mM LAE and 23 vol % ethanol). For dodecylbenzenesulfonate, 807.4 mg 4-dodecylbenzene sulfonic acid and mixture O (Merck Life Sciences UK, used as received) were dissolved in deionized water (Elga Purelab Flex). The pH was adjusted to 6 using an NaOH solution (pH was determined using a Hanna Instruments pH210 microprocessor

pH meter with a VWR simple junction universal combined pH/reference electrode) followed by making up the solution to 1 l. The solutions of CPC in combination with citrate and benzoate were prepared by dissolving ~0.11 g of CPC with 0.12 g of citric acid and/or 0.07 g of benzoic acid in deionized water, adjusting the pH as before, and making up to 100 ml. The solution containing deionized water, ethanol, and thymol was prepared by dissolving 0.1675 g of thymol in 50 ml of ethanol; 2.3 ml of this solution was combined with 7.7 ml deionized water. All commercial mouthwash preparations are listed in Table 1.

## Cells and viruses

Virucidal assays utilized VeroE6 or A549 cells, a gift from the University of Glasgow/MRC Centre for Virology, UK. To enhance infectivity and produce a more sensitive cell line for detection of virus, both cell types were transduced with lentiviruses encoding angiotensin-converting enzyme 2 (ACE2) and transmembrane serine protease 2 (TMPRSS2) and then drug selected as described (36). The England2 strain of SARS-CoV2 was provided by Public Health England and amplified in VeroE6 cells before being harvested from the supernatant. All cells were grown in DMEM containing 2% (v/v) FCS and incubated at 37°C in 5% CO<sub>2</sub>.

## Virucidal assays

Virucidal activity of mouthwash was studied in media containing 100 µl mucin type I-S, 25 µl BSA fraction V, and 35 µl yeast extract to mimic oral secretions. About 100 µl of this mixture was added to 100 µl of virus suspension and 800 µl of the test product or medium as control. After 30 s, virucidal activity was neutralized by 10-fold serial dilution in ice-cold DMEM (containing 10% FCS). Alternatively, virus was purified by size-exclusion chromatography (SEC) to prevent direct cytotoxic effects of the products on the cell monolayer; 100 µl of the mixture was added to a microspin S-400 HR column and centrifuged for 2 min at 700 g. A 10-fold serial dilution was then made of the flow-through in DMEM containing 10% FCS. Virus was titrated by plaque assay; serial dilutions were used to infect VeroE6/ACE2/TMPRSS2 cells for 1 h. Following this, cells were overlaid with DMEM containing 2% FCS and 1.2% Avicel®. After 72 h, the overlay was removed, and the monolayer was washed and fixed with 100% methanol. Monolayers were stained with a solution of 25% (v/v) methanol and 0.5% (w/v) crystal violet and then washed with water, and plaques were enumerated. For measurement of toxicity, monolayers were similarly incubated, stained with crystal violet, and scored by eye for live cells.

## Harvest of virus particles and lipid extraction for lipidomics profiling

Cells were infected with SARS-CoV2 at multiplicity of infection = 0.01, when cells were 70% confluent, in either serum-free media (Vero cells) or at 2% FCS (A549). At 96 h postinfection, supernatants were harvested, cellular debris pelleted (2,000 g 5 min), and then virus pelleted through a 30% sucrose cushion (25,000 rpm, 2.5 h, in a SW28 rotor [112,398 g]). Pellets were resuspended in PBS, purified on a 20–60% sucrose gradient (25,000 rpm, 16 h, in a SW41 rotor [106,882 g]), before being pelleted (35,000 rpm, 1 h, in a SW41 rotor [209,490 g]), and resuspended as outlined later. All preparations were analyzed for purity and abundance by nanoparticle tracking analysis using Nanocyte® (Malvern Panalytical) and by Western blot. For PS externalization, samples were used immediately. For lipidomics profiling, they were used immediately or stored for a few days at –80° as snap-frozen pellets.

For untargeted and targeted lipidomics, virus particles were resuspended in 0.5 ml of PBS, which was then spiked with 10 µl Splash mix (Avanti Polar Lipids), containing d18:1-18:1(d9) SM (296 ng), 15:0-18:1(d7) phosphatidylcholine (PC) (1.506 µg), 15:0-18:1(d7)PE (53 ng), 15:0-18:1(d7) phosphatidylglycerol (PG) (267 ng), 15:0-18:1(d7) phosphatidylinositol (PI) (85 ng), 18:1(d7) Lyso PC (238 ng), 18:1(d7) Lyso PE (49 ng), cholesterol-d7 (984 ng), cholesteryl ester (CE) 18:1-d7 (3.291 µg), triglyceride (TG) 15:0/18:1-d7/15:0 (528 ng), 15:0-18:1(d7) PS (39 ng), and 20 ng of 17:1 Lyso PG. Samples were also spiked with 5 µl of Cer/sphingoid internal standardmixII (Avanti Polar Lipids) containing 56.99 ng of d18:1/12:0 Cer. Samples were then extracted using a Bligh and Dyer method. Briefly, 1.9 ml of solvent mixture, 2:1 methanol:chloroform v/v, was added to 0.5 ml sample. Samples were vortexed for 30 s, and then 0.625 ml of chloroform was added. Samples were vortexed again (for 30 s), and 0.625 ml of water was then added. Samples were vortexed for 30 s and centrifuged at 1500 rpm, at 4°C, for 5 min. Lipids were recovered from the lower layer and evaporated to dryness using a Labconco RapidVap® (Labconco). Extracted lipids were reconstituted in 200 µl methanol and stored at –80°C until analysis.

## Targeted LC/MS/MS analysis of lipid categories and classes

Targeted assays were performed on three separate culture preparations of gradient-purified SARS-CoV2 virus, from either Vero or A549 cells. *i)* Vero For preps 1 and 2, three technical replicates of the same extracted lipid samples were analyzed and averaged to give one set of mean values per

TABLE 1. Formulations of mouthwash products used in the study

Product	Active ingredients	Other active ingredients
Corsodyl	7% (v/v) Ethanol, 0.2% (w/v) chlorhexidine	Peppermint oil
Dentyl Dual Action	0.05–0.1% (w/v) Cetylpyridinium chloride	IPM, Mentha Arvensis extract
Dentyl Fresh Protect	0.05–0.1% (w/v) Cetylpyridinium chloride	Xylitol
Listerine® Cool Mint	21% (v/v) Ethanol	Thymol 0.064%, eucalyptol 0.092%, methyl salicylate 0.060%, and menthol 0.042% (all w/v)
Listerine® Advanced Defence Gum Treatment	23% (v/v) Ethanol	LAE HCl (LAE) 0.147% w/v
SCD Ultra	0.07–0.1% (w/v) Cetylpyridinium chloride (0.05–0.1%), sodium citrate—citric acid 0.15%, sodium benzoate 0.1% (all w/v)	Sodium monofluorophosphate
Videne	7.5% Iodinated povidone equivalent to 8.25 mg/ml iodine	

prep ( $n = 1$  per prep). For prep 3, three separate extractions and analyses were performed (different virus particles in each extraction) and then values averaged to give one value per lipid ( $n = 1$ ). Combining preps 1–3 gave  $n = 3$  values for lipid molecular species. Standards for Cers and dihydroceramides (DHCers) were only included in prep 3, although these lipids were detected as present in all preparations. Data for Cer and DHCer are from three separate virus isolate extractions using prep 3. *ii*) A549. All samples had Cer and DHCer standards included. Prep 1 was generated from an individual isolate, whereas preps 2 and 3 arose from a larger scaled-up culture preparation, separated into preps 2 and 3, prior to lipid extraction. Preps 1–3 were analyzed, giving  $n = 3$ , which was averaged to generate mean values. A full list of all lipids analyzed is shown in [supplemental Table S1](#), with data on extraction efficiency and instrument coefficient of variation. Category-specific figures show lipid molecular species comprising at least 2% of the signal of the most abundant lipid in that class. We note that PEs annotated as plasmalogen (vinyl ether) could also include isobaric ether lipids.

Hydrophilic interaction liquid chromatography (HILIC) LC-MS/MS was used for PLs and SLs on a Nexera liquid chromatography system (Shimadzu) coupled to an API 6500 qTrap mass spectrometer (Sciex). Liquid chromatography was performed at 35°C using a Waters XBridge Amide column, 3.5  $\mu\text{m}$ , 4.6  $\times$  150 mm, at a flow rate of 0.7 ml/min over 24 min. Mobile phase A was water/acetonitrile (5/95; v/v and 1 mM ammonium acetate), and mobile phase B was water/acetonitrile (50/50; v/v and 1 mM ammonium acetate). The following linear gradient for B was applied: 0.1% B–6% B over 6 min, 6–25% B over 4 min, 25–98% B over 1 min, and 98–100% B over 2 min. At 13.5 min, the flow rate changed to 1.5 ml/min and remained at 100% B until 18.7 min where it returned to 0.1% B. Flow rate then returned to 0.7 ml/min at 23.5 min. Source conditions for positive mode were ionization voltage (IS) 5.5 kV, curtain gas (CUR) 35, temperature (TEM) 550°C, source gas 1 (GS1) 50, and source gas 2 (GS2) 60. Negative-mode source conditions were IS –4.5 kV, CUR 35 psi, TEM 550°C, GS1 50 psi, and GS2 60 psi. Dwell time was calculated in Analyst (V1.6, AB Sciex) automatically based on the number of multiple reaction monitorings (MRMs). This is a scheduled method with pos/neg switching throughout. PLs and Cers were quantified using an external calibration with the following standards, based on a single standard per class (Splash mix) since structurally related lipids tend to closely elute on HILIC: d18:1-18:1(d9)SM, 15:0-18:1(d7)PC, 15:0-18:1(d7)PE, 15:0-18:1(d7)PG, 15:0-18:1(d7)PI, 18:1(d7) Lyso PC, 18:1(d7) Lyso PE, 17:1 Lyso PG, and 17:1 Lyso PI. PCs, PEs, PIs, PGs Lyso PGs, Lyso PEs, and Lyso PCs were quantified from standard curves containing two primary standards each (with the exception of Lyso PE and Lyso PG, which had one primary standard each) (PC 16:0-18:1, PC 18:0-22:6, PE 16:0-18:1, PE 18:0-20:4, PG 16:0-18:1, PG 18:0-22:6, PI 16:0-18:1, PI 18:0-20:4, Lyso PC 16:0, Lyso PC 18:0, Lyso PE 16:0, and Lyso PG 16:0). Cers were calculated from a standard curve generated by serially diluting the internal standard. SMs were calculated based on the following equation: (area A/area IS) \* (nanofram IS added). For confirming the absence of serum contamination of lipids in purified virus cultured from A549 cells, blank isolates (medium + 2% serum) were extracted and then analyzed using direct injection precursor scanning MS/MS for the presence of PE (precision 196, negative ion mode), PC (precision 184, positive ion mode), and CE (precision 369, positive ion mode), comparing with virus lipid extracts.

PS does not resolve well using the applied HILIC and was instead analyzed using a shotgun method to generate bulk species data. A neutral loss scan (NL 87) was acquired in negative ion mode on the Sciex 6500 platform to obtain a list of precursor PS species present in the virus lipids. Samples were injected (10  $\mu\text{l}$  for preps 1 and 3 and 5  $\mu\text{l}$  for prep 2) under flow (mobile phase: methanol + 1 mM ammonium acetate, 0.2 ml/min), with source and MS conditions as follows: CUR 35, IS –4500, TEM 500, GS1 40, GS2 30, DP –50, CE –36, and CXP –29. Once the main PS species were identified, an MRM approach was used, monitoring precursor ions (as determined by the NL precursor scan) to the NL fragment of  $m/z$  87. These were quantified against 15:0–18:1(d7) PS, present in the splash mix. MRMs were as follows:  $m/z$  [M-H]<sup>–</sup> 758.6–671.5 (PS 34:2), 760.6–673.5 (PS 34:1), 774.6–687.5 (PS O-36:1), 786.6–699.5 (PS 36:2), 788.6–701.6 (PS 36:1), 810.7–723.6 (PS 38:4), 812.7–725.6 (PS 38:3), 814.7–727.6 (PS 38:2), 816.7–729.6 (PS 38:1), 834.7–747.6 (PS 40:6), 836.7–749.6 (PS 40:5), and 842.7–755.6 (PS 40:2).

LC-MS/MS for free cholesterol and CEs and LC-MS analysis of TGs was performed on a Nexera liquid chromatography system (Shimadzu) coupled to an API 4000 qTrap mass spectrometer (Sciex). Liquid chromatography was performed at 40°C using a Hypersil Gold C18 (Thermo Fisher Scientific) reversed phase column (100  $\times$  2.1 mm, 1.9  $\mu\text{m}$ ) at a flow rate of 0.4 ml/min over 11 min. Mobile phase A was water/solvent B (95/5; v/v and 4 mM ammonium acetate), and mobile phase B was acetonitrile/isopropanol (60/40; v/v and 4 mM ammonium acetate). The following linear gradient for B was applied: 90% for 1 min, 90–100% from 1 to 5 min and held at 100% for 3 min followed by 3 min at initial condition for column re-equilibration. Samples were spiked with cholesterol-d7 (984 ng), CE 18:1-d7 (3.291  $\mu\text{g}$ ), and TG 15:0/18:1-d7/15:0 (528 ng) prior to extraction. TGs were analyzed in selected ion monitoring positive mode, covering a range from TG 32:0 up to TG 56:0 including also unsaturated TGs. MS conditions were as follows: TEM 450°C, GS1 35 psi, GS2 50 psi, CUR 35 psi, IS 5 kV, declustering potential 60 V, and entrance potential 10 V. Dwell time was 10 ms. Triacylglycerides (TAGs) were quantified using an external calibration with TG 15:0/18:1-d7/15:0. Free cholesterol and CEs were analyzed in MRM mode monitoring the precursor to product transitions of 12 CEs and free cholesterol, as [M + NH<sub>4</sub>]<sup>+</sup>. MS conditions were as follows: TEM 150°C, GS1 25 psi, GS2 50 psi, CUR 35 psi, IS 5 kV, declustering potential 70 V, entrance potential 10 V, collision energy 20 V, and collision cell exit potential 25 V. Dwell time was 100 ms for each transition. Cholesterol and CEs were quantified using external calibration curves against the internal standards, with the following primary standards: cholesterol, CE 14:0, CE 16:0, CE 18:0, CE 18:1, CE 20:4, and CE 22:6. For all targeted assays, inclusion criteria for peaks were those at least 5:1 signal-to-noise ratio and with at least seven points across the peak.

All targeted lipidomics data were statistically analyzed using Student's *t*-test, followed by Benjamini-Hochberg correction where any lipid category had >20 variables. All statistical data are provided in the Source Data file.

## Untargeted lipidomics

Untargeted lipidomics was conducted using Vero culture prep 3 (three separate virus samples were extracted, and extracted blanks) on a Waters iClass liquid chromatography system coupled to a Synapt XS QTOF (Waters), in resolution (21,500 full width at half maximum pos, 19,000 full width at half maximum negative) mode. HILIC was performed at

35°C using a Waters XBridge Amide column, 3.5  $\mu\text{m}$ , 4.6  $\times$  150 mm, at a flow rate of 0.7 ml/min over 24 min. Mobile phase A was water/acetonitrile (5/95; v/v and 1 mM ammonium acetate), and mobile phase B was water/acetonitrile (50/50; v/v and 1 mM ammonium acetate). The following linear gradient for B was applied: 0.1–6% B over 6 min, 6–25% B over 4 min, 25–98% B over 1 min, and 98–100% B over 2 min. At 13.5 min, the flow rate changes to 1.5 ml/min and remains at 100% B until 18.7 min where it returns to 0.1% B. Flow rate then returns to 0.7 ml/min at 23.5 min. MS conditions were as follows for analysis in negative ion mode: capillary voltage 1.2 kV, source temperature 120°C, sampling cone 25, desolvation temperature 450°C, cone gas flow 20, mass range 50–2,000 amu, and scan rate 0.5 s. Lock mass was leucine enkephalin  $m/z$  554.2615. For analysis in positive ion mode: capillary voltage 1.5 kV and source temperature 100°C, sampling cone 30, desolvation temperature 500°C, cone gas flow 30, resolution mode, mass range 50–2000 amu, and scan time 0.5 s. Lock mass was leucine enkephalin  $m/z$  556.2771. Prior to feature analysis, the data were processed using the Waters compression tool to reduce the noise, changed to centroid using MassLynx, and converted to .MZxml by the MSconvert module in Proteowizard. Feature analysis was carried out using the HPLC/QTOF parameters in XCMS online (37). The two resulting feature lists (positive and negative) were further processed using the Python program LipidFinder 2.0 in its default configuration (38). This includes solvent, ion fragments, salt clusters, adducts, isotopes, and contaminants as well as lipid clusters removal, and outlier and retention time correction. The putative lipid profiling was done using LIPID MAPS Structure Database (LMSD) on LIPID MAPS with 0.05 Da tolerance, searching for “[M – H]<sup>–</sup>,” “[M + H]<sup>+</sup>,” “[M + Na]<sup>+</sup>,” “[M + NH<sub>4</sub>]<sup>+</sup>,” “[M + OAc]<sup>–</sup>” ions and adducts. Next, all matches with  $\delta\text{PPM} > 10$  were manually removed. Matches to GL in negative ion data and matches to fatty acyl in positive ion data were removed and reassigned as unknowns, with LMSD identifiers removed. In LipidFinder, to remove baseline noise from blanks, the mean of the blank signals for each ion is subtracted from each lipid sample, where they match by room temperature and  $m/z$  value. Then, every frame that is less than three times greater than the solvent mean for every sample is removed. After processing, a manual step was also included where ions that were represented in blank samples at >15%, the virus sample was judged to be background and removed. Retention time windows based on standards were estimated as follows: lysoPE/PC 10–11 min, PE/PC 6–7 min, Lyso PI 10–12 min, PG 2–4 min, PI 8–10 min, LPG 4.5–5.5 min, MAG/TAG/DG 1–3 min, SM 9–11 min, and Cer 1.5–3 min. Note that many ions listed in unknowns are likely to be in source fragments,

which will match LMSD entries that were moved to unknown since they are outside the expected room temperature window. Mass accuracy is broadly considered down to three decimal places. Note that this is a largely unvalidated dataset and provided for further information mining purposes. Data are provided in [supplemental Data2.xls](#).

### Identification and quantitation of external facing PE and PS on the surface of SARS-CoV2

Total and external PE and PS were derivatized and analyzed using LC/MS/MS as described previously (39). Briefly, virus particles were suspended in 0.2 ml PBS and incubated with 20  $\mu\text{l}$  of 20 mM NHS-biotin (total PE/PS) or 86  $\mu\text{l}$  of 11 mM EZ-Link Sulfo-NHS-biotin (external PE/PS) for 10 min at room temperature before addition of 72  $\mu\text{l}$  of 250 mM L-lysine. Volumes were increased to 0.4 ml using PBS. Vials containing 1.5 ml chloroform:methanol (1:2) solvent with 10 ng of internal standards (biotinylated 1,2-dimyristoyl-PE and 1,2-dimyristoyl-PS) were used for lipid extraction. The solvent:sample ratio was 3.75:1 as a modified Bligh/Dyer technique (39). Following vortexing and centrifugation (400 g, 5 min), lipids were recovered in the lower chloroform layer, dried under vacuum, and analyzed using LC-MS/MS. Samples were separated on an Ascentis C-18 5  $\mu\text{m}$  150 mm  $\times$  2.1 mm column (Sigma-Aldrich) with an isocratic solvent (methanol with 0.2% w/v ammonium acetate) at a flow rate of 400  $\mu\text{l}/\text{min}$ . Products were analyzed in MRM mode on a Q-Trap 4000 instrument (Applied Biosystems, UK) by monitoring transitions from the biotinylated precursor mass (Q1  $m/z$ ) to product ion mass (Q3  $m/z$ ) in negative ion mode. The area under the curve for the analytes was integrated and normalized to internal standards. The ratio of external to total PE/PS was calculated for each molecular species and expressed as a fraction (%) externalized. MRM transitions monitored are provided in [Table 2](#).

### Comparative analysis of lipid species between categories

For the targeted assay, we first generated quantitative data (nanogram/sample) for all lipids measured in all virus extracts. However, obtaining accurate virus particle numbers, so that data can be converted to nanogram/particle number, proved difficult. Standard measures of plaque-forming unit (PFU) are not useful since they do not correlate with particle numbers. We attempted to use nanoparticle tracking analysis; however, the accuracy of particle counts was insufficient for our needs, potentially because of aggregation of virus particles following ultracentrifugation. Our main question was whether lipid composition of individual virus preparations

TABLE 2. MRM transitions and instrument settings for the aPL analyzed in negative ion mode

Analyte	Mass	Biotinylated mass	$m/z$ [M – H] <sup>–</sup>	Biotinylated MRM	DP (V)	CE (V)	CXP (V)
PE 14:0_14:0	635	861	860	860→227	–135	–60	–13
PS 14:0_14:0	679	905	904	904→591	–150	–42	–17
PE 18:0p_20:4	751	977	976	976→303	–160	–60	–5
PE 18:0a_20:4	767	993	992	992→303	–170	–58	–5
PE 16:0p_20:4	723	949	948	948→303	–160	–60	–5
PE 18:0a_18:1	745	971	970	970→281	–170	–58	–5
PE 18:1p_20:4	749	975	974	974→303	–160	–60	–5
PS 18:0a_18:1	789	1,015	1,014	1,014→701	–140	–44	–23
PS 18:1a_18:1	787	1,013	1,012	1,012→699	–150	–46	–23
PS 18:0a_20:4	811	1,037	1,036	1,036→723	–145	–42	–23

varies when virus is propagated in different cells. For example, do they contain more PE or PC, or other lipids, in terms of relative amounts. To answer this, we need to compare relative proportions of lipid within the same virus preparations. To do this, we first converted nanogram values to molar amounts, using a representative mass value for each lipid category (SM: 814, LPC: 523, PC: 757, LPE: 479, PE: 775, PE-O: 775, PE-P: 775, LPG: 508, PG: 778, PI: 866, PS: 789, Chol: 386, CE: 652, and TAG: 886). This then allowed a direct comparison for all replicates and both preparations of virus both for total lipid categories and within the categories themselves, without the need for accurate particle counts.

### Assessment of coagulation activity by activated partial thromboplastin time

Because of logistics of conducting assays with live SARS-CoV2 virus, we used a classical assay that does not require specialist equipment (<https://practical-haemostasis.com/Screening%20Tests/aptt.html>). Here, the activity of both intrinsic and extrinsic pathways of coagulation is measured in recalcified plasma activated on contact with a negatively charged surface provided by a glass test tube, and the ability of live virus to modulate coagulation was tested. Purified SARS-CoV2 virus was resuspended in PBS, then 50  $\mu$ l added to 50  $\mu$ l of normal pooled human plasma (Alpha Laboratories; CCN-10), in a glass tube. As a negative control, 50  $\mu$ l of PBS was added to plasma instead of virus. Samples were incubated at 37°C for 1 min and then 50  $\mu$ l of prewarmed 20 mM CaCl<sub>2</sub> was added. Samples were incubated at 37°C, and the time until a visible clot formed was measured by visual inspection using a stopwatch. Clot time is defined as any visual evidence for formation of a gel-like structure, recognizing that these can either be strong and stable or looser. In control samples, the fibrin clot was formed in around 2 min (120 s).

### Western blot

Purity of gradient-purified viruses was assessed by Western blot for spike protein (virus) and actin (cells). Virions were resuspended in NuPAGE LDS sample buffer (Thermo) containing 10% DTT, then samples were loaded onto 14% Tris-glycine precast gels (Bio-Rad), and run for 1 h at 20 V. Protein was transferred to nitrocellulose membranes by semidry transfer, blocked in blocking buffer (5% nonfat milk in PBS with Tween-20) for 1 h, then stained with primary antibody for 1 h at room temperature. Membranes were washed, incubated with secondary antibody for 1 h at room temperature, washed, developed with Supersignal West Pico (Thermo), and imaged using a G:Box Chemi XX6 (Syngene). Antibodies were all diluted in blocking buffer and were rabbit antiactin (catalog no.: A2066; Sigma-Aldrich; 1:2,000 dilution) and mouse anti-SARS-CoV2 spike (Clone 1A9; Insight; 1:2,000 dilution), as well as antimouse HRP or antirabbit HRP (GE Healthcare; 1:2,000 dilution).

### Clinical study design

A four-arm randomized controlled trial was conducted to study the effectiveness of antimicrobial mouthwashes in vivo. Multicentre Research Ethics Committee approval was obtained (IRAS285247; <https://doi.org/10.1186/ISRCTN25647404>), and all procedures adhered to the Declaration of Helsinki. Original sample size was calculated based on reported mouthwash activity against enveloped herpes virus; designed with a >80% power to detect a 2-fold reduction in viral load

(40). Plans for stopping data collection were established in advance; treatment arms would be dropped at interim analysis for efficacy, if a >2-fold reduction in salivary viral load ([doi.org/10.1186/ISRCTN25647404](https://doi.org/10.1186/ISRCTN25647404)) was observed versus Normasol®. However, interim analysis was not possible as with 52 randomized patients recruited, only 15 samples contained live virus at baseline. About 406 patients were screened for eligibility at three hospitals during a period of 6 months. The majority were deemed ineligible for inclusion (see CONSORT [Consolidated Standards of Reporting Trials] flow diagram). Following this, 78 individuals were randomized to receive a mouthwash. On final analysis, 51 of 78 patients had no live SARS CoV2 in baseline salivary samples and were excluded (see CONSORT flow diagram). No other patients were excluded, and no outlying data were removed, leaving 27 patients. The primary and secondary end points established prior to the study were viral load of SARS CoV2 at 30 min and viral load of SARS CoV2 at 1, 15, and 60 min (<https://doi.org/10.1186/ISRCTN25647404>). Sample collection was stopped after 6 months because of falling patient numbers, and the data were independently analyzed.

Briefly, following informed consent, inpatients with PCR-confirmed COVID-19 infection within the last 14 days were recruited at the University Hospital of Wales, the Royal Glamorgan Hospital, and Betsi Cadwalader University Health Board in Wales UK. Participants were assigned to one of the four arms: Dentyl Dual Action (CPC); Videne (PVP-I); SCD Ultra (CPC), or Normasol® (sterile saline 0.9% [w/v]) using a balanced randomization scheme (provided by Dr Damian Farnell, Cardiff University). Baseline saliva was collected into 30 ml Universal containers. The patient then rinsed their mouth for 30 s with 10 ml of the mouthwash. Saliva samples were then collected after 1, 15, 30, and 60 min into sterile 30 ml Universal containers. Anonymized samples were transported and stored at -80°C and transferred to the approved BSL3 facility at Cardiff University where live virus was titrated as aforementioned. Results were expressed as log<sub>2</sub> fold change from baseline. Clinical and research staff involved in sample collection and laboratory analysis were blinded as to which product was which.

### Statistical analysis for clinical study

At termination of the study, blinded data were analyzed by an independent observer (R.G.N.) who was not involved in the design of the clinical trial or randomization. All original data on viral load (plaque-forming unit/ml of saliva), together with the log<sub>2</sub> fold change in from baseline to 60 min post-treatment is presented. The viral load from baseline to 60 min post-treatment was used to calculate a geometric mean ratio (mean change from baseline to post-treatment). Data were then log transformed. Where virus was not detected, zero values were replaced with 4, just below the lower limit of detection for the assay (5 PFU/ml). Lower and upper confidence limits from the relevant mean and SD on the transformed scale and *t* and *P* values were determined using unpaired *t*-test (Table 2).

## RESULTS

### The SARS-CoV2 envelope from Vero or A549 cells is PL rich and varies depending on cellular origin

SARS-CoV2 England 2 strain was grown in VeroE6 or A549 monolayers and purified using density gradient

centrifugation. A549 stably expressed ACE2 and TMPRSS2 to enhance infectivity (36). Purity of virus was confirmed by nanoparticle tracking analysis, with a single peak observed at approximately 100 nm (Fig. 1A) and by Western blot demonstrating the absence of actin as a cellular marker from the purified virus (Figs. 1B and S1A,B). The absence of serum lipid contamination in purified virus was confirmed using precursor scanning for PE, PC, and CE (data not shown).

Viral lipid extracts were analyzed using lipidomics, including targeted (virus from both cell types) and untargeted (Vero cell virus only) to provide a comprehensive map of molecular composition and abundance. First, targeted LC/MS/MS was used to analyze ~500 individual molecular species, in triplicate for each cell type. Across the two separate preparations (Vero vs. A549), ~260 lipids were reproducibly detected. The full list of species analyzed and the dataset are provided in [supplemental Data](#). These data are first shown with lipids grouped into their respective categories (Fig. 1C). Here, data were converted to relative abundance in mol%. This was calculated using a generic mass value for each category of a typical molecular species. Overall, the virus envelope was primarily comprised of PL from several categories, with the most abundant for both preparations being PC, PE, and PI, along with several respective lyso and ether/plasmalogen forms. Ether/plasmalogen PEs were relatively abundant when compared with acylPEs. Smaller amounts of PS and PG were seen. There was a low abundance of other lipids such as SLs, including SM, Cer, DHCer, and also CE, TAG, and free cholesterol (Fig. 1C). This pattern overall was quite consistent across both virus preparations. However, looking in more detail, some clear differences were also apparent, depending on cell of origin. Comparing A549 with Vero-derived virus, a higher proportion of PI versus PC was seen, along with a higher ratio of etherPE (PE-O) but lower PC and diacylPE (Fig. 1C). Some significant differences in low abundance lipid categories such as Cer/DHCer, LPE, PS, and TAGs were also seen (Fig. 1C, *insets*).

### The SARS-CoV2 membrane contains low amounts of cholesterol, SM, and PS, relative to other PL

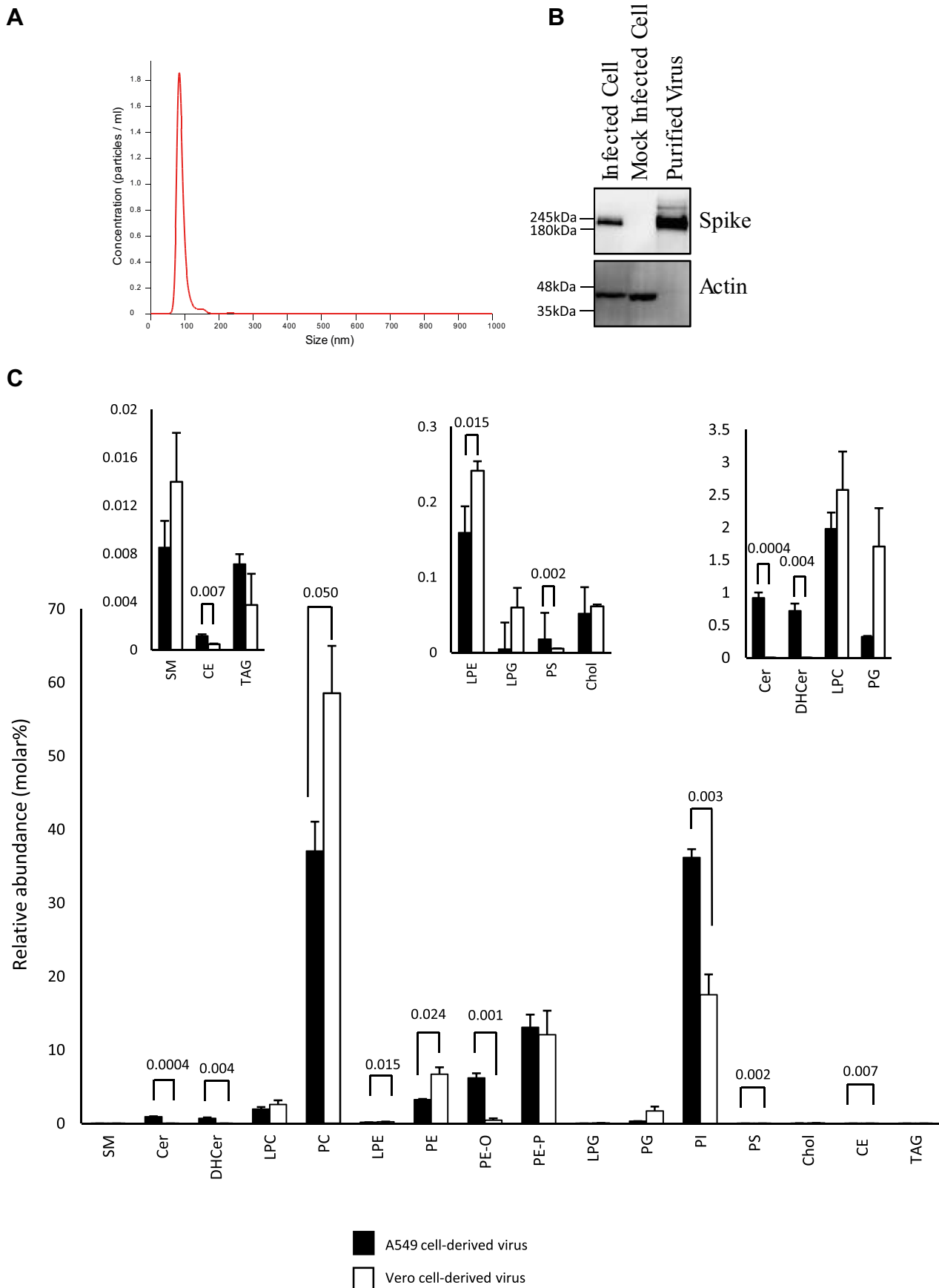
Next, mol% was calculated for PL and SLs only, since this allows comparison with older studies on composition of intracellular membranes of mammalian cells, which used thin layer chromatography coupled with phosphate analysis to measure these lipid categories (Table 3). Unfortunately, very few studies on cell membrane composition exist and these used older methods very different to LC/MS/MS as well as very different cell types. Nonetheless, it is useful to compare these with SARS-CoV2, as shown in Table 3 (see Discussion section). For both virus preparations, the molar ratio of cholesterol:PL was similar, at 0.0005 or 0.00061 mol:mol, A549 or Vero, respectively. This indicates that the membrane is virtually devoid of

cholesterol, in combination with a high PL content. In addition, the mol% of SM and PS are relatively low (Table 3). Overall, the data characterizes SARS-CoV2 as a membrane highly enriched in PL, primarily PE, PC, and PI.

Next, the individual molecular species within categories were compared. Within each cell type, the levels of specific lipids were very similar, indicating that the viral lipidome is relatively stable (Figs. 2 and 3A). However, significant differences were seen between Vero versus A549-derived virus across many lipids, when comparing fatty acyl composition (Figs. 2 and 3A). Consistently, levels of PL with the low abundant fatty acyl 20:1 and 20:2 were more predominant in Vero than A549 cells, across PE, PG, and PI lipids. The pattern was reversed for 20:3 and 20:4, which were more abundant in A549 cells for PE and PI species of PL (Fig. 3B). Aside from this, for more abundant PL species, the pattern was variable with some higher in Vero and others higher in A549 cells (Figs. 2 and 3A). Notably, for both virus preparations, the most abundant FAs detected were 16:0, 18:0, and 18:1 (Figs. 2 and 3A). This profile was maintained strongly across all PL classes as well as lysoPLs.

### Generation of an untargeted lipidomics dataset for future lipid mining

Next, to generate an untargeted dataset, virus lipids from Vero cultures were separated using HILIC in triplicate, subtracting extracted blanks, scanning from 50 to 2,000 amu, at 20 K resolution. Retention time windows were identified using internal standards for PC, PE, PG, PI, lysoPC, lysoPE, lysoPG, lysoPI, glycerides, SM, and Cer. Since electrospray ionization high-resolution mass spectroscopy runs contain large numbers of artifactual ions including in source fragments, isotope peaks, common contaminant ions in blanks, salt clusters, ion stacks, and other features, two informatics approaches were applied to clean up the dataset. First, XCMS was used to align and integrate peaks, before a full clean up using LipidFinder 2.0 was performed (37, 38). LipidFinder is designed to remove as many of these artifacts as possible while retaining real lipids and also subtracts blank signals to correct for background. Large numbers of ions were returned in the dataset, and putative matches are provided from the LMSD Bulk search, mapped to the LIPID MAPS classification (41, 42) ([supplemental Data2.xls](#)). Using internal standards, we isolated ions matched to specific categories as described aforementioned, and putative matches that fell outside retention time windows were moved to the unknown category and names removed. Since this analysis is based on precursor mass only, bulk annotation should be used, and putative matches are provided as unvalidated examples of potential structure, where shorthand annotation is not available (e.g., prenols, polyketides, saccharolipids) (42). We recommend if these data are to be used that investigators rigorously confirm structures of interest



**Fig. 1.** Nanoparticle tracking analysis and Western blotting confirm purity of SARS-CoV2 preparations, whereas targeted lipidomics demonstrates the membrane as a PL-rich membrane mainly comprised of PE, PC, and PI. A and B: purity analysis of gradient purified viral preparations. A: Gradient purified virus was analyzed by nanoparticle tracking analysis and particle size plotted. B: Proteins were solubilized in NuPAGE LDS buffer and then separated by size on Bis-Tris gels, before being transferred to



TABLE 3. PL composition of SARS-CoV2, compared with rat liver membranes, reproduced from Vance (35) and Van Meer (9)

Lipid	Vance (35)							Vero	A549
	ER	Mito inner	Mito outer	Lysosomes	Nuclei	Golgi	Plasma membrane		
PC	57	41	49	42	52	45	43	61	40
PE	21	38	34	21	25	17	21	19	23
SM	4	2	2	16	6	12	23	0.024	0.009
PI	9	2	9	6	4	9	7	18	37
PS	4	1	1	1	6	4	4	0.013	0.005
CL	0	16	5	0	0	0	0		
Other	5	<1	<1	14	7	13	2	1.75	0.33
Chol/PL molar ratio	0.07	0.06	0.06	0.49		0.15	0.76	0.0006	0.0005

Van Meer (9)			
PC	58		
PE	22		
SM	3		
PI	10		
PS	3		
Chol/PL molar ratio	0.08		

Approximate PL content is given as percent of total lipid phosphorus, data are averaged from several sources in both studies, as described.

using MS/MS, and we would be able to provide lipid extracts on request in order to help such an endeavor.

Overall, our lipidomics data establish SARS-CoV2 membrane as highly enriched in PL, particularly PC, PE, and PI, but with rather low levels of cholesterol, PS, and SM. They also show that the membrane is influenced to some extent by the host cell of origin in relation to specific molecular species of lipids detected.

### The SARS-CoV2 lipid membrane external leaflet is unable to maintain asymmetry of PE and PS

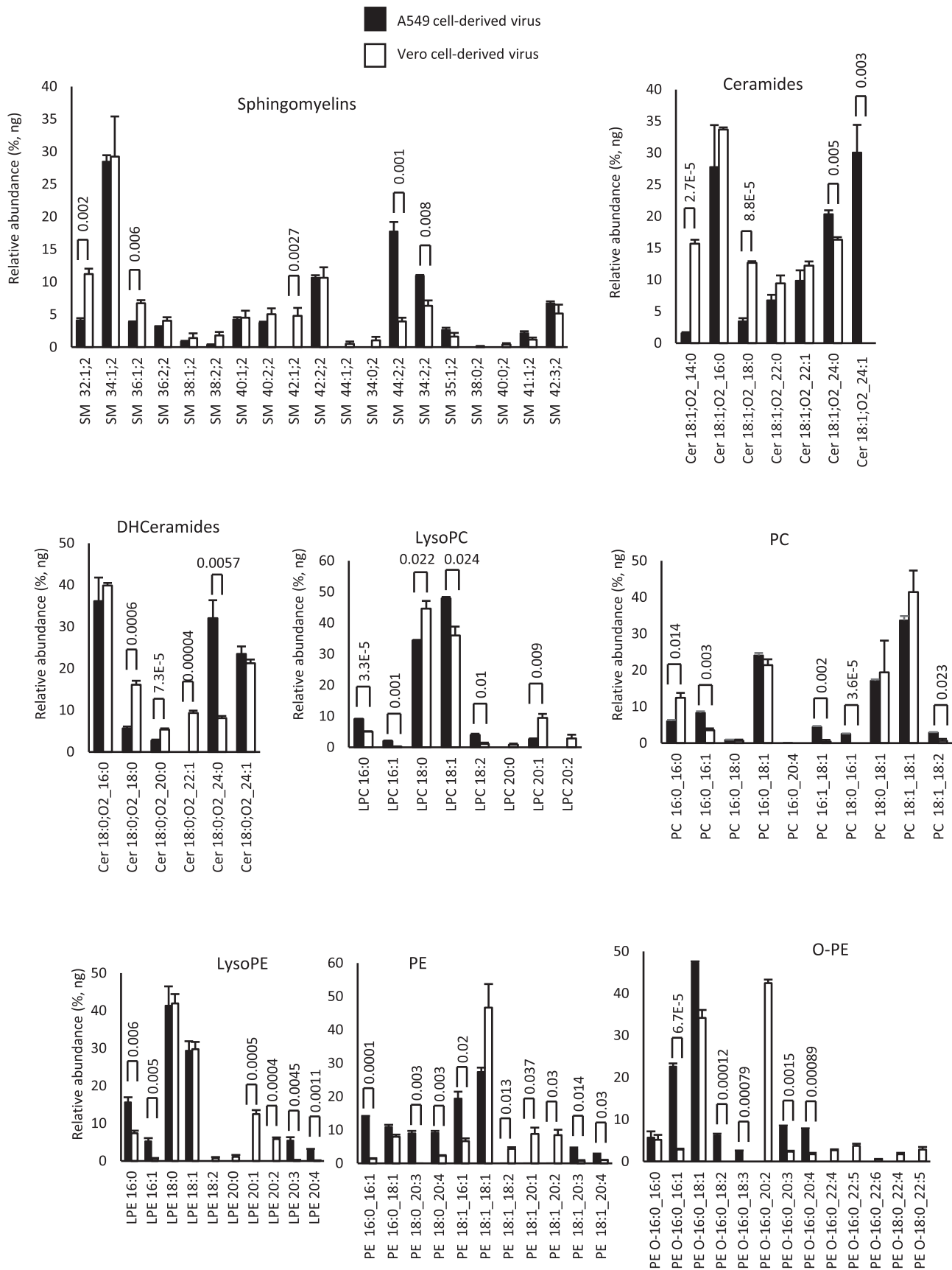
Mammalian membranes maintain asymmetry via the action of flippases and floppases, which retain aPL on the inner membrane (43). Here, we determined the proportion of PE and PS molecular species on the surface of viral particles using derivatization-LC/MS/MS (39). Adding together the molecular species measured, the external levels of aPL were 48% or 52% for virus from A549 or Vero cells, respectively. However, for Vero cells, the percent of PS externalized was consistently lower, around 27%, versus 56% for A549, with the level of PS 18:1\_18:1 being significantly reduced (Fig. 4A). For PE, the overall external levels were 52% for both cell types. Generally, the pattern of external aPL was similar for both virus preparations, with around half of the aPL being exposed on the external leaflet (Fig. 4A). Thus, unlike mammalian cells, SARS-CoV2 particles are unable to maintain asymmetry of aPL. As a comparison, we previously showed that

when platelets are thrombin activated, calcium-dependent scramblase externalizes PE/PS, to only around 3–4 mol%, from around 0.2–0.5% basally (43). This is sufficient to support complete binding and activation of coagulation factors, leading to hemostasis and thrombosis (43). Thus, considering the total virus levels of PE and PS (Fig. 1C), with the proportions detected externally (Fig. 4A), these particles will expose some external facing PS, along with very high levels of external PE, far higher than would be present on platelets during physiological or pathological hemostasis.

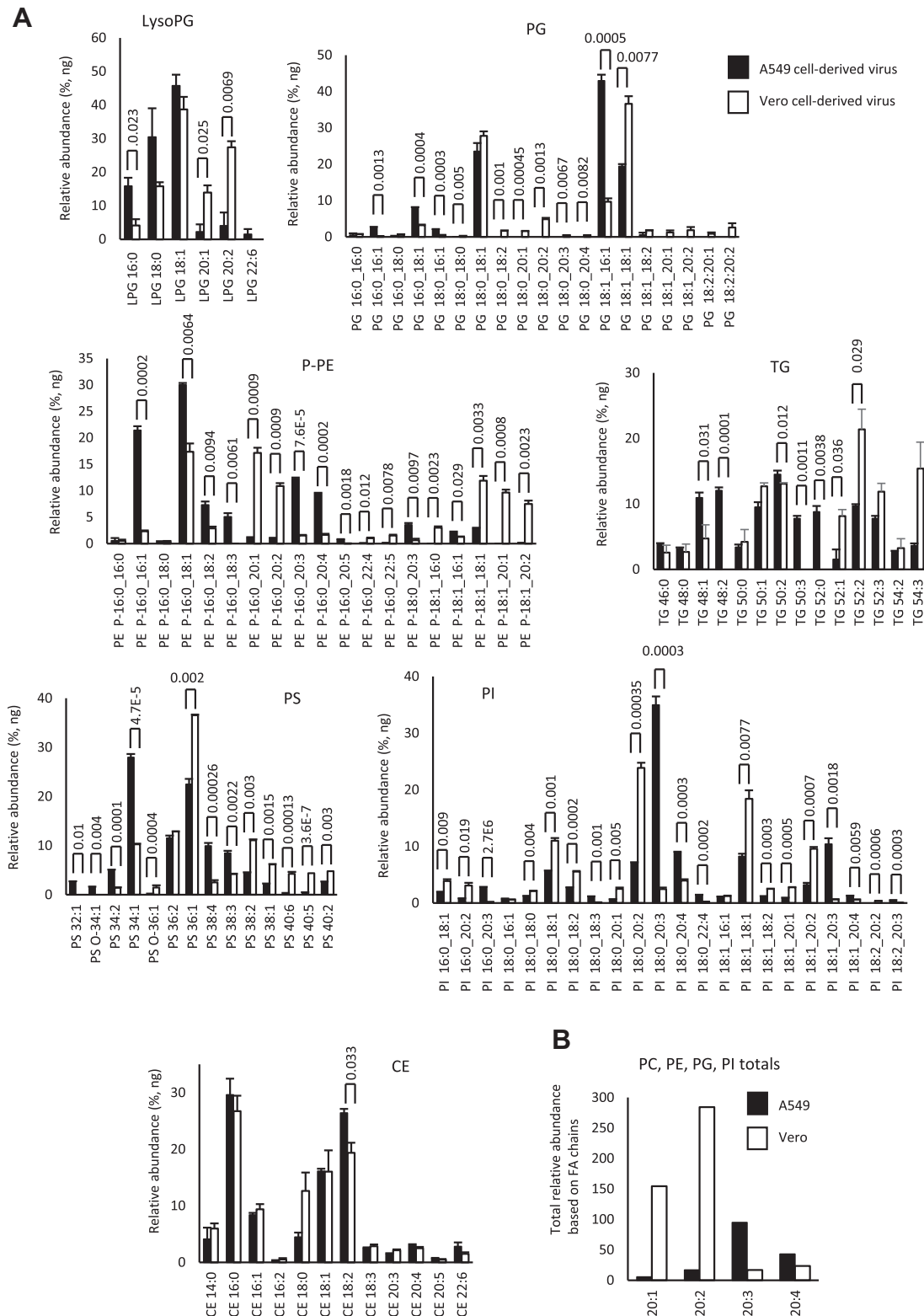
### SARS-CoV2 virions enhance plasma coagulation

Given the key role of external facing PE and PS in together supporting blood clotting, we next tested whether virus could regulate the ability of plasma to coagulate in vitro. Gradient purified virions were added to plasma in the presence of CaCl<sub>2</sub> and the activated partial thromboplastin time was measured as outlined in Materials and methods section. Here, the presence of a glass surface stimulates the “contact” or intrinsic pathway, resulting in a cascade of factor activation and eventually fibrin clot formation. Virions dramatically reduced the time taken for clot formation in a concentration-dependent manner, at minimum concentrations of  $\sim 6 \times 10^5$  PFU/ml (Fig. 4B). Although data are not available on blood virus levels in severe disease, we note that the levels able to enhance clot

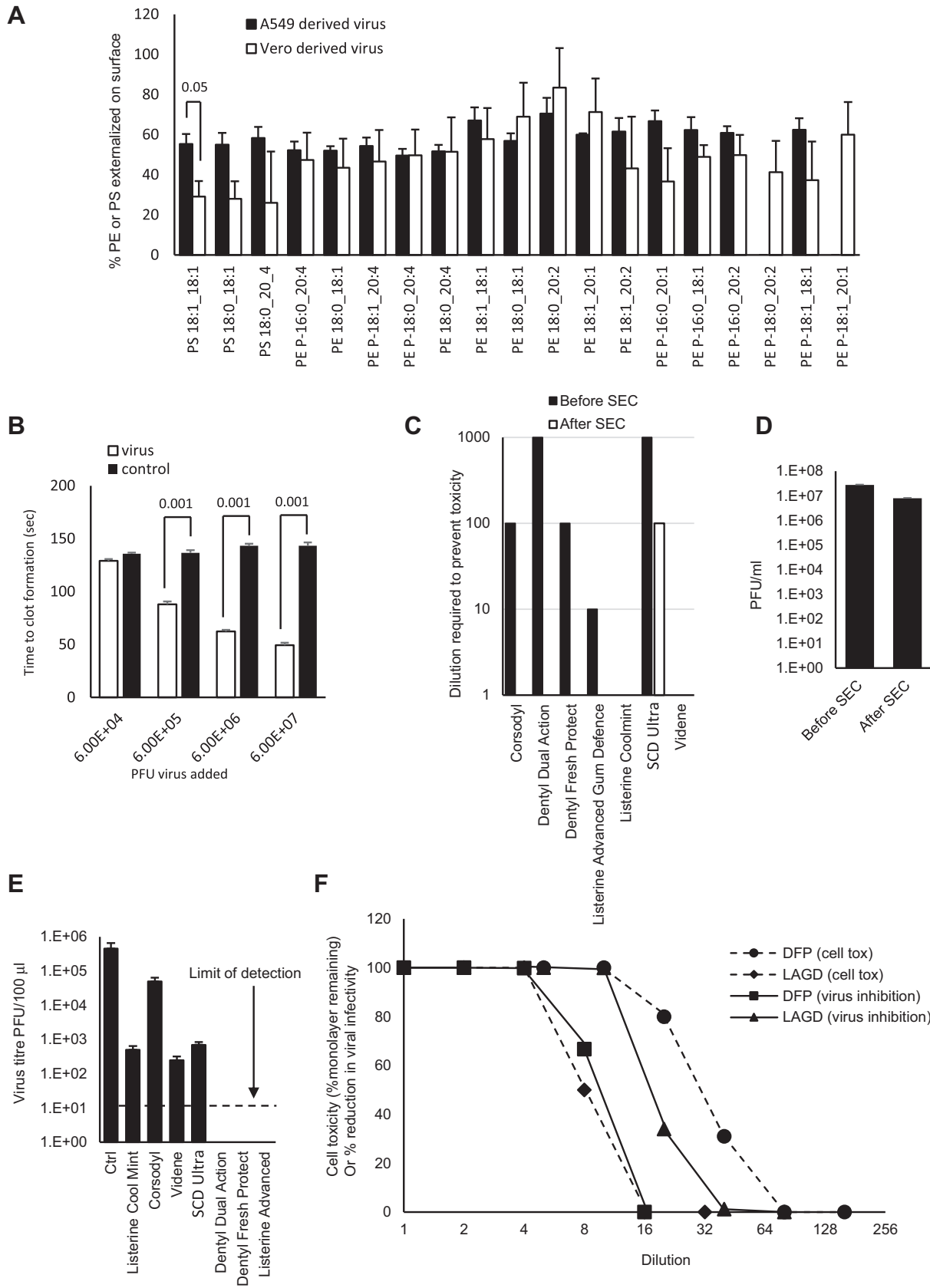
nitrocellulose and blotted for the indicated proteins, as outlined in Materials and methods section (see supplemental Fig. S1 for uncropped gels). C: Lipidomics analysis of the total amounts of lipids in each category in Vero and A549 cells. Lipids were extracted from three preparations of virus from either Vero or A549 cells and analyzed using LC/MS/MS, as indicated in the Materials and methods section. The relative percent of all detected lipid categories for all three preparations, with molecular species within each category combined to provide total values, is shown. Amounts (nanogram) of all individual molecular species were added together for each preparation and then converted to molar amounts using an average mass value per category. Molar% was then calculated following totaling of all lipid categories ( $n = 3$ , mean  $\pm$  SEM). Unpaired Student's *t*-test.



**Fig. 2.** Comparison of lipid molecular species detected in SARS-CoV2 derived from Vero or A549 cells shows some cell dependence in fatty acyl composition across the cell types. Lipids were totaled within each category (nanogram) and then expressed as percent for  $n = 3$  preparations/analyses, mean  $\pm$  SEM, as outlined in the [Materials and methods](#) section. Unpaired Student's  $t$ -test, followed by Benjamini-Hochberg correction where there were  $>20$  variables.



**Fig. 3.** Comparison of lipid molecular species detected in SARS-CoV2 derived from Vero or A549 cells shows some cell dependence in fatty acyl composition across the cell types. A: Lipids were totaled within each category (nanogram) and then expressed as percent for  $n = 3$  preparations/analyses, mean  $\pm$  SEM, as outlined in the [Materials and methods](#) section. Unpaired Student's *t*-test, followed by Benjamini-Hochberg correction where there were  $>20$  variables. B: Species of PL (PC, PE, PI, and PG) that were determined to contain fatty acyl with 20:1, 20:2, 20:3, or 20:4 were totaled to generate a comparison for A549 versus Vero cells.



**Fig. 4.** SARS-CoV2 membranes externalize large proportions of PE and PS on the surface of the particles, virus can enhance plasma coagulation, and virions are sensitive to inactivation by surfactants in widely available oral rinses beyond the level required for EN14476 standard. A: High external exposure of aPL on the surface of SARS-CoV2. External PS and PE were determined as described in the [Materials and methods](#) section for three preparations of SARS-CoV2 ( $n = 3$ , mean  $\pm$  SEM) using virus from A549 or

formation are well within the range of levels detected in saliva, BAL, and subglottic aspirates in patients, who frequently carry loads of  $10^6$ – $10^7$ , and can even be above  $10^8$  PFU/ml (44).

### Lipid-disrupting oral rinses reduce viral infectivity in vitro achieving EN14476 virucidal standards

Having characterized the envelope composition, we next investigated whether it was possible to disrupt the lipid envelope using oral rinses that not only have been designed to be antimicrobial but also contained constituents potentially capable of targeting generic PL-based membranes. To define biological activity, we assessed viral infectivity in vitro, in the presence of a soil load to mimic the components of the nasal/oral cavity. To examine the activity of a range of products, seven formulations were tested (Table 1) including rinses containing CPC (CPC, Dentyl Dual action, Dentyl Fresh Protect, SCD Ultra), chlorhexidine (Corsodyl), ethanol/LAE (Listerine® Advanced Defence Gum Therapy), ethanol/essential oils (Listerine® Cool Mint), and PVP-I (Videne). The impact of a 30 s exposure of virus to rinse formulation was assessed by plaque assay.

The assay was optimized to *i*) exclude potential for mouthwash to interfere with plaque assay through direct toxicity toward host cells, *ii*) prevent persistence of effect on virus beyond the 30 s exposure time, and *iii*) consider the choice of soil load to best model human oropharynx conditions. An important refinement was the use of VeroE6, which stably overexpress ACE2 and TMPRSS2. This significantly improves viral infectivity, with SARS-CoV2 entering  $>10$  fold more efficiently than parental VeroE6, significantly enhancing assay sensitivity (36). Rather than BSA alone, our soil load comprised mucin (type I-S), BSA, and yeast extract (as in Ref. (29)) to better mimic the charged polymeric mucin matrix lining the oral and nasal mucosa. Mucin type I-S is generated in salivary glands and interacts with oral mucosa, food, and microbiome. To exclude a direct impact of mouthwash on cells, host cell viability was measured with/without the addition of dilutions of mouthwash for 1 h (the time

taken to infect the cells with SARS-CoV2), in the absence of virus but the presence of soil load. Five of the seven products reduced cell viability when added undiluted. This cytotoxicity was concentration dependent and reduced via serial dilution (Fig. 4C). To address this problem, SEC was employed to remove mouthwash from virus prior to plating on cells. This also ensured that antiviral activity did not continue while virus was diluted and titrated. Purification of the virus on S-400 HR Microspin® columns under control conditions (no mouthwash) resulted in minimal (3.5-fold) loss of infectivity (Fig. 4D). When mouthwashes (without virus) underwent SEC, the flow-through was nontoxic against the cell monolayer for all products with the exception of SCD Ultra (Fig. 4C). SEC was therefore used for all in vitro mouthwash testing. These optimizations enabled the detection of a  $>5$ -log<sub>10</sub> decrease in virus titer, with the exception of SCD Ultra for which a  $>4$ -log<sub>10</sub> decrease was measurable. This is above the 4-log<sub>10</sub> reduction in activity specified by EN14476, allowing the testing of mouthwash to international virucidal standards, as detailed later.

Next, the ability of mouthwash to reduce virus infectivity, after a 30 s exposure in a soil load, was tested using the optimized plaque assay. Two CPC-containing mouthwashes (Dentyl Dual Action and Dentyl Fresh Protect) and a mouthwash containing 23% v/v ethanol/LAE (Listerine® Advanced DGT) eradicated the virus completely, giving  $>5$ -log<sub>10</sub> reduction in viral titers and thus met EN14476 as a virucide. In contrast, only moderate effects ( $\sim 3$ -log<sub>10</sub> fold reduction) were observed with PVP-I (Videne), CPC/sodium citric acid/benzoate (SCD Ultra), and 21% v/v alcohol/essential oils (Listerine® Cool Mint) (Fig. 4E), which failed to meet EN14476. Chlorhexidine (Corsodyl;  $<2$  log<sub>10</sub> fold reduction) was least effective.

### Oral rinse formulations exhibit differential selectivity in virus and host cell inactivation

For products with antiviral activity, it is relevant to determine selectivity for the virus as opposed to host

---

Vero cells as indicated, unpaired Student's *t*-test. B: Virions enhance plasma coagulation. Virus was added to normal human plasma as outlined in the [Materials and methods](#) section, and time to gel/clot formation was measured. PBS was added to control samples.  $n = 3$ ,  $\pm$  SEM, one-way ANOVA with Tukey post hoc test. C: Size-exclusion chromatography (SEC) can remove mouthwash to prevent any direct impact on cell viability during infectivity testing. Mouthwashes were mixed with DMEM and synthetic salivary secretions, then 100  $\mu$ l of the mixture was purified through a S-400 HR spin column, diluted by serial 10-fold dilution in DMEM/10, and inoculated onto VeroE6/ACE2/TMPRSS2. After 72 h, overlays were removed, and monolayers were fixed and stained with crystal violet, then toxicity was scored based on visual inspection of monolayer integrity (mean,  $n = 2$ , representative of three independent experiments). D: Removal of mouthwash using SEC has little impact on viral infectivity. Viruses (100  $\mu$ l) were purified through an S-400 HR spin column, and live virus was measured by plaque assay on VeroE6/ACE2/TMPRSS2 ( $n = 3$ – $4$ , mean  $\pm$  SEM). E: Several mouthwashes can significantly reduce infectivity, whereas some totally eradicate the virus, achieving the EN14476 standard. Virus was mixed with synthetic salivary secretions and mouthwash and then purified by SEC after 30 s, before being titrated by plaque assay on VeroE6/ACE2/TMPRSS2 as described in the [Materials and methods](#) section ( $n = 2$ , mean  $\pm$  SD, representative of three independent experiments). F: Comparing selectivity for virus inactivation versus host cell toxicity reveals differential effects. For cell toxicity, serial 2-fold dilutions of dental fresh protect (DFP) or Listerine Advanced Gum Defense (LAGD) were made, then added to VeroE6/ACE2/TMPRSS2 monolayers for 30 s, washed off, and replaced with media. Three days later, monolayers were stained with crystal violet and scored for toxicity. For virus infectivity, serial 2-fold dilutions of mouthwashes were made and then incubated with SARS-CoV2 and a soil load for 30 s. After purification by SEC, samples were titrated by plaque assay on VeroE6/ACE2/TMPRSS2. Inhibition was calculated relative to virus incubated with media alone ( $n = 1$  [virus toxicity] or 2 [cell toxicity, mean], representative of three independent experiments).

cells, since potential toxicity *in vivo* should be considered. We showed that the SARS-CoV2 membrane is similar to ER/Golgi in terms of PL composition (Table 3), and unlike plasma membrane, it is extremely low in cholesterol and SM. However, whether this is sufficient to reveal differential impacts of oral rinses needed to be experimentally determined. We compared the sensitivity of VeroE6 cells with SARS-CoV2 virions to dilutions of the two formulations showing the highest efficacy, that is, CPC (Dentyl Fresh Protect) or ethanol/LAE (Listerine® Advanced DGT) following 30 s exposure in the presence of soil load (Fig. 4F). *In vitro* cell toxicity varied 8-fold between the virucidal mouthwashes (Dentyl Fresh Protect and Listerine® Advanced DGT). Listerine® Advanced DGT showed higher selectivity for virus overcultured cells than Dentyl Fresh Protect, as shown by calculated IC<sub>50s</sub> (Fig. 5A), which was approximately two times more potent at inactivating virus (Fig. 4F). Thus, while neither product demonstrated a high selective index for virus versus cells, the SARS-CoV2 envelope lipid composition may, in principle, enable selection of more targeted formulations with lower impact on host cells.

### Surfactants in oral rinses provide the strongest antiviral effects

Despite all mouthwashes containing antibacterial compounds, they demonstrated widely varying abilities to inactivate SARS-CoV2, indicating that careful selection for clinical use may be important. To determine which components were responsible for this activity, SARS-CoV2 was exposed to active constituents (alone or combined) from the relevant rinses, using concentrations found in individual formulations (Fig. 5B and Table 1). CPC, the active component in Dentyl Fresh Protect, eradicated live virus at both concentrations tested (Fig. 5B). Dentyl Dual Action contains CPC/isopropyl myristate (IPM) in a biphasic aqueous-oil system that requires shaking before use. CPC is predominantly in the aqueous phase, whereas IPM is predominantly in the oil layer. The fully shaken rinse completely eradicated live virus (Fig. 5B). The aqueous CPC layer (without prior mixing) was also effective, as was the aqueous layer obtained after shaking followed by 2 min settling (to ensure IPM saturation of the CPC layer) (Fig. 5B). Thus, CPC alone can eradicate SARS-CoV2, and IPM is not required.

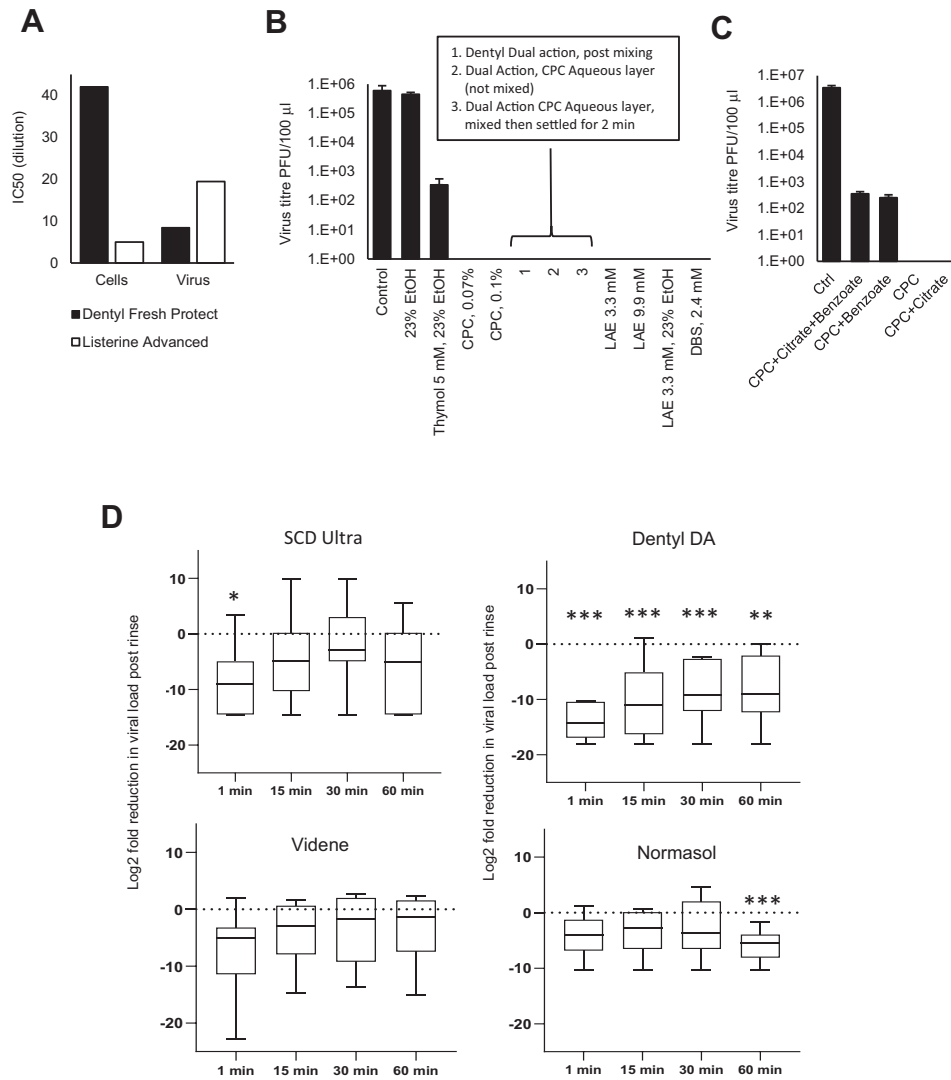
Listerine® Advanced DGT contains ethanol at 23% v/v and LAE (3.3 mM), whereas other formulations (e.g., Listerine® Cool Mint) contain ethanol with essential oils: thymol, menthol, and eucalyptol. Whilst 23% v/v ethanol alone had no consistent impact, the addition of thymol (5 mM) resulted in a 3-log reduction in virus titers (Fig. 5B). This indicates that Listerine® Cool Mint reduces virus titers because of the essential oils, with ethanol mainly providing oil solubility. Aqueous solutions of LAE below (3.3 mM) and above (9.9 mM) the

critical micelle concentration (cmc, 4.9 mM (45)), completely eradicated SARS-CoV2, mirroring the potent antiviral activity of Listerine® Advanced DGT, which contains 3.3 mM LAE (Fig. 5B). This was seen with or without 23% ethanol inclusion, indicating that LAE is responsible for the antiviral activity of this product. To determine the potential effect of charge on molecular interactions with the viral lipid membrane, in addition to CPC and LAE (cationic surfactants), the effect of the anionic surfactant dodecylbenzenesulfonate was tested and found to completely eradicate infectivity (Fig. 5B).

One mouthwash (SCD Ultra) showed only a 3-log reduction in virus titers despite containing CPC (Fig. 4E). This formulation also contains citrate and benzoate. When these were separately added to CPC, citrate had no effect; however, benzoate reduced the ability of CPC to kill virus (Fig. 5C). Therefore, while surfactants such as CPC are essential for antiviral activity, additional mouthwash components may reduce this effectiveness in inactivating SARS-CoV2.

### CPC-containing mouthwashes reduce the salivary viral load of SARS-CoV2 in patients with COVID-19

Although a subset of mouthwashes were effective *in vitro*, it was important to determine their effectiveness *in vivo*, where virus is being shed continually in the oropharynx. A randomized clinical trial was undertaken to measure the antiviral efficacy of mouthwashes following a 30 s rinse. About 78 hospital in-patients with PCR-diagnosed COVID-19 were recruited, following invitation of over 400 to participate. Despite a positive PCR test in the preceding 14 days, only 27 of 78 patients had live SARS-CoV2 present in their baseline saliva. Recent studies show that live virus is almost never detected beyond 9 days postsymptom onset in immunocompetent patients (46). As our patients were ill enough to be admitted to hospital, many were likely beyond this time point. Unfortunately, this was not known at the time sample collection was initiated and only became evident toward the end, with the study terminated at 6 months. By then, new UK daily cases had decreased from 55,892 (December 31, 2020) to 4,052 (March 31, 2021), hospitalized patient numbers were declining, and comorbidity and ventilatory support in these patients rendered them ineligible for randomization (<https://coronavirus.data.gov.uk>), making further recruitment impossible. Amongst patients with live virus, saliva was collected before rinsing (baseline), and at 1, 15, 30, and 60 min postrinsing, with mouthwashes containing either containing CPC/IPM (Dentyl Dual Action, *n* = 8), CPC/benzoate (SCD Ultra, *n* = 7), PVP-I (Videne, *n* = 6), or 0.9% w/v NaCl (Normasol, *n* = 6). Data are shown as both log<sub>2</sub> fold reduction from baseline (Fig. 5D) and as individual patient data (Fig. 6). Across the entire cohort, baseline salivary viral load varied widely, from 120 PFU/ml to  $2.8 \times 10^7$  PFU/ml (supplemental Data1.xls). All four mouthwashes reduced salivary viral load 1 min



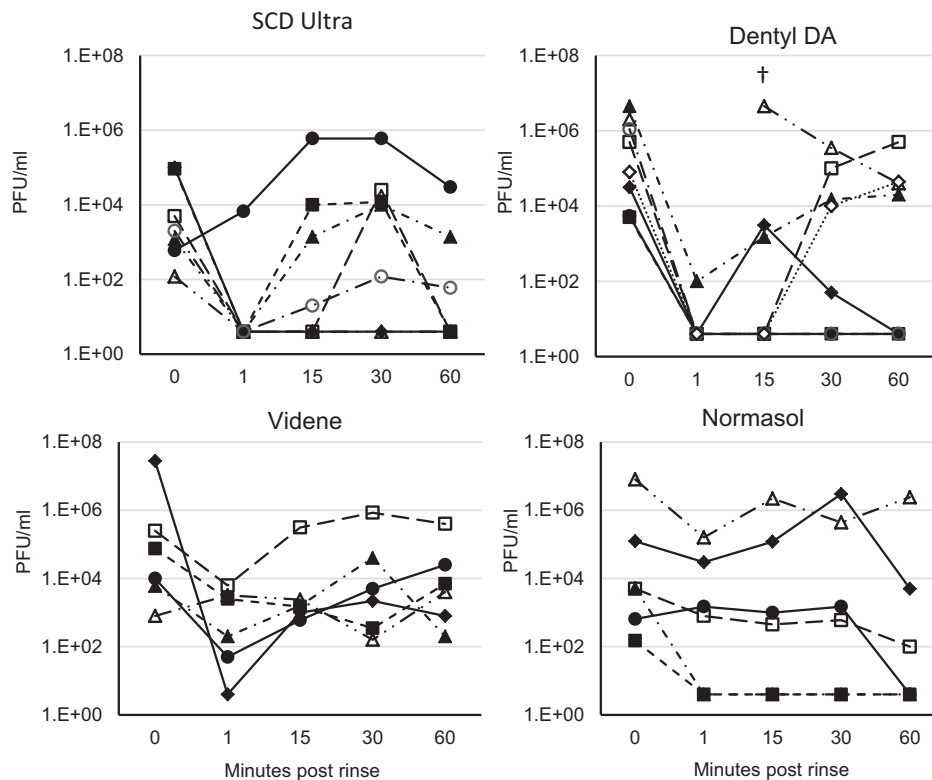
**Fig. 5.** IC<sub>50</sub> values for cell versus virus toxicity, antiviral efficacy of mouthwash components, and SARS-CoV2 salivary load are differentially reduced following a brief oral rinse. A: IC<sub>50</sub> values were calculated from data for Figure 4F using GraphPad Prism. B and C: Surfactants are responsible for the highest virucidal activity in mouthwash formulations. About 100 µl virus was mixed with synthetic salivary secretions and the indicated components from different mouthwash formulations, for 30 s. Virus was purified through an S-400 HR spin column, and live virus measured by plaque assay on VeroE6/ACE2/TMPRSS2. (*n* = 2, representative of three independent experiments). D: Oral rinsing significantly impacts salivary viral load. Samples of saliva were obtained prior to a 30 s rinse with a mouthwash, and then at various time intervals postrinse, as described in the Materials and methods section. Saliva was tested for the presence of infective virus using an infectivity assay as described (*n* = 7, 8, 6, 6 for SCD Ultra, Dentyl Dual Action, Videne, and Normasol, respectively). Log<sub>2</sub> fold reduction in PFU/ml saliva post rinse is shown at the various time points tested. Data are shown as box and whisker plots with median, intraquartiles, and range shown. \*\*\**P* < 0.005, \*\**P* < 0.01, unpaired *t*-test, for each time point compared with prerinse values.

postrinsing, with the smallest reduction being from Normasol® (median 3.9 log<sub>2</sub> fold reduction from baseline) and the largest Dentyl Dual Action where six of seven patients recorded no live virus (median 14.3 log<sub>2</sub> reduction from baseline) (Fig. 5D, Tables 4 and 5). The persistence of the effects varied with rinse. No significant reduction in salivary viral load was seen with Videne at any of the time points, whereas for Normasol®, a significant reduction was apparent only at 60 min. For SCD Ultra, a significant reduction in viral load was seen at 1 min only (median 8.9 log<sub>2</sub> reduction from baseline, Fig. 5D). Dentyl Dual Action was the only product to

demonstrate a persistent effect, with a significant reduction evident throughout at 1, 15, 30, and 60 min, respectively (medians 14.3, 11, 8.8, 9, log<sub>2</sub> reduction from baseline). Impressively, in three-eighths of patients treated with Dentyl Dual Action, no live virus was recovered at any time point after the initial rinse (Fig. 6).

## DISCUSSION

While vaccines and antivirals have targeted the proteins or replication cycle of SARS-CoV2, there has been very little research into the lipid envelope to date.



**Fig. 6.** Individual patient data showing how SARS-CoV2 salivary load is differentially reduced following a brief oral rinse. Samples are as outlined for Figure 5. Here, individual data for all participants are shown as PFU/ml plotted as log<sub>10</sub>. †In this patient-administered Dentyl DA, the 1 min sample had dried before analysis and could not be recorded.

Indeed, there is very little known about lipid membranes of any enveloped viruses hindering development of strategies targeted directly at the lipids themselves. To address this information gap, a lipidomic analysis of the viral membrane using

**TABLE 4.** Changes in PFU/ml from time 0 to 1, 15, 30, and 60 min summarized by geometric mean ratios

Mouthwash	Geometric mean ratio	95% Confidence limits		<i>t</i> Ratio	<i>P</i>
		Lower	Upper		
Change to 1 min					
Normasol®	0.0576	0.00331	1.004	-2.567	0.0502
SCD Ultra	0.00320	0.000059	0.174	-3.520	0.013
Dentyl DA	0.000059	0.000008	0.000409	-12.283	<0.001
Videne	0.00655	0.000016	2.648	-2.153	0.084
Change to 15 min					
Normasol®	0.0954	0.00508	1.79	-2.058	0.095
SCD Ultra	0.0541	0.000345	8.48	-1.412	0.208
Dentyl DA	0.000707	0.000016	0.0317	-4.510	0.003
Videne	0.0592	0.000820	4.27	-1.699	0.150
Change to 30 min					
Normasol®	0.141	0.00318	6.187	-1.334	0.240
SCD Ultra	0.331	0.00233	47.1	-0.546	0.605
Dentyl DA	0.00386	0.000172	0.086	-4.226	0.004
Videne	0.0970	0.00103	9.10	-1.321	0.244
Change to 60 min					
Normasol®	0.0177	0.00219	0.143	-4.964	0.004
SCD Ultra	0.0135	0.000108	1.69	-2.181	0.072
Dentyl DA	0.00327	0.000098	0.110	-3.854	0.006
Videne	0.110	0.000982	12.3	-1.202	0.283

Data were analyzed using unpaired *t*-test.

untargeted and targeted approaches was undertaken. Old studies using thin layer chromatography and total phosphorous analysis, reporting mol% values of rat liver membranes suggest that PS and SM are enriched in mammalian plasma membranes versus ER membrane (9, 35) (Table 3). On the other hand, PC and PI are enriched in ER versus plasma membrane (9, 35). Golgi membranes are generally intermediate between ER and plasma membrane in terms of mol% composition and are mainly comprised of PC, PE, and PI. The cholesterol/PL ratio is highest for plasma membrane and very low for ER (Table 3). Coronaviruses have long been known to be generated on the ER/Golgi intermediate complex membrane (3-8); however, how this is related to their lipid composition was so far unknown.

Here, we found that the SARS-CoV2 membrane is primarily comprised of PC, PE, and PI, while having low levels of free cholesterol, PS, and SM. This appears most similar to ER, although with even lower proportion of PS, SM, and cholesterol than previously reported for that membrane compartment, using older methods. In the mammalian plasma membrane, cholesterol is often concentrated in specialized regions that support receptor-dependent signaling, called lipid rafts (47). Our data suggest these will be absent from the viral envelope. Furthermore, the cholesterol in plasma membranes regulates fluidity and reduces permeability



TABLE 5. Log2 fold changes of PFU/ml comparing time 0 (baseline) to 1, 15, 30, and 60 min, as plotted for Fig. 3A

		<i>n</i>	Log2 fold change				
			Mean	SD	Median	Minimum	Maximum
1 min	Normasol	6	-4.12	3.93	-3.94	-10.34	1.21
	SCD Ultra	7	-8.29	6.23	-8.97	-14.61	3.48
	Dentyl DA	7	-14.06	3.03	-14.29	-18.07	-10.29
	Videne	6	-7.25	8.25	-5.119	-22.74	2
15 min	Normasol	6	-3.39	4.04	-2.67	-10.34	0.62
	SCD Ultra	7	-4.21	7.89	-4.91	-14.61	9.97
	Dentyl DA	8	-10.47	6.56	-10.99	-18.07	1.17
	Videne	6	-4.08	5.88	-2.98	-14.77	1.58
30 min	Normasol	6	-2.84	5.21	-3.62	-10.34	4.6
	SCD Ultra	7	-1.6	7.74	-2.94	-14.61	9.97
	Dentyl DA	8	-8.02	5.37	-8.76	-18.07	-2.32
	Videne	6	-3.37	6.24	-1.66	-13.64	2.74
60 min	Normasol	6	-5.82	2.87	-5.44	-10.34	-1.74
	SCD Ultra	7	-6.21	7.53	-5.06	-14.61	5.64
	Dentyl DA	8	-8.26	6.06	-9.05	-18.07	0
	Videne	6	-3.18	6.49	-1.37	-15.1	2.32

Note: Zero counts were replaced with a value of 4; the lower limit of detection of the assay being 5 PFU/ml.

to small molecules, whereas SM is also important for reducing fluidity (48–50). Thus, the viral envelope and plasma membrane will be very different biophysically. Similarly, bacterial membranes are also considered to be devoid of cholesterol. In this context, this is exploited therapeutically since cholesterol protects host cells from disruption by antimicrobial peptides, which directly insert in the bacterial membrane (51). Having described the virion envelope in detail, it is now possible to test targeted strategies using liposomes that mimic the SARS-CoV2 membrane, for example, by generating liposomes with the exact lipid molecular composition.

Furthermore, we demonstrate that the virion membrane contains lysoPL, from PG, PE, and PC, noting that these are known bioactive lipid signaling mediators, and their presence in the envelope could impact on host inflammatory responses to infection. It was recently reported that coronaviruses exit via lysosomal secretion instead of the biosynthetic secretory pathway (52). Lysosomes contain high levels of SM and cholesterol (Table 3), thus the lack of these lipids indicates that lysosomal passage of virus does not appear to impact envelope composition. Examining the different lipid categories at the molecular species level, a high proportion of saturated/mono-unsaturated FAs were noted, with little PUFA evident. This most likely reflects the typical fatty acyl composition of cultured cells, which tend to be lower in PUFA than primary tissues. In human disease, the SARS-CoV2 virus will be actively replicating in oral, nasal, and airway epithelia. Studies on airway and tracheal cells have shown their fatty acyl composition to be similar to what was seen here, but with significantly more 18:2 and 20:4, which becomes lowered during cell culture (53, 54). Thus, virus generated in human airways in vivo may have more PUFA than found herein, but this remains to be determined. Notably, we found significant differences in SARS-

CoV2 virus lipids, depending on the host cell in which they were generated. This may relate to subtle differences in host cell ER membranes between the cell types. Importantly, inflammation has a significant impact on host cell lipid metabolism, and how this influences virion envelope composition now needs to be tested. Furthermore, whether lipid composition is different in other strains of SARS-CoV2 is also unknown. This question is being currently addressed for multiple variants of concern in our laboratory.

Here, we showed that SARS-CoV2 exposes around 50% of its total molecular species of aPL on the surface of the particle (Fig. 4B). As a caveat of the method, membrane proteins or sugars could in theory hinder derivatization of aPL, and so this value may be a lower-level estimate. In primary cells, energy-dependent processes maintain asymmetry of plasma membranes. This ensures that very low mol% of PE and PS are exposed on the surface, for example, only 3–4% is present on platelets following thrombin activation (43). This is because PE and PS promote coagulation and complement binding and uptake of apoptotic cells through their electronegative interactions with Ca<sup>2+</sup> ions and various proteins (3, 20, 43). Although the overall amounts of PS appear to be rather low in virions, PE levels are similar to plasma membrane (Table 3). Thus, exposure of 50% of aPL on the surface will result in levels of external PE that are around 12-fold-higher than activated platelets (43). In line with this, we found that purified virions significantly accelerate plasma coagulation in vitro (Fig. 4B), although we stress that in vivo there will be many sources of membrane in inflamed tissue in COVID, which may contribute to thrombosis. In addition, a recent study showed (using a less specific ELISA) that levels of PS on the surface of SARS-CoV2 are sufficient to support PS receptor-dependent viral entry (17). Our work extends this significantly by reporting on the nanogram amounts of PS and PE present, the proportions of PE

and PS that are externalized, and the specific molecular species of PE and PS in the membrane. In addition to SARS-CoV2, PS has been implicated in the cellular uptake of several other viruses, thus knowing how much and which molecular species are external facing on the envelope is relevant to other infectious diseases (10–16). In summary, our study and others suggest that targeting aPL could support antithrombotic, anti-inflammatory, or antiviral strategies for COVID-19.

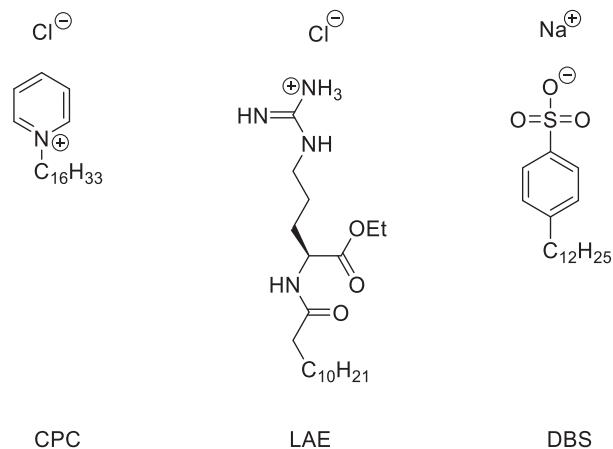
Our findings could also be relevant for other enveloped respiratory viruses such as influenza, which has long been considered to trigger thrombotic complications of atherosclerosis, including myocardial infarction. Winter peaks in influenza are often followed 2 weeks later by a peak in ischemic heart disease, hypertension, and cerebrovascular disease deaths. Furthermore, many acute vascular events follow upper respiratory infections (reviewed in detail in Ref. (55)). A recent study found that emergency department visits for respiratory illness were both associated with, and predictive of, cardiovascular disease mortality in adults older than 65 years (56). Furthermore, in a meta-analysis, influenza vaccination was associated with lower risk of adverse cardiovascular events (57). The mechanisms are unknown, and a vascular inflammatory component is very likely to play a role. Thus, other enveloped viruses are also strongly associated with thrombotic events; however, whether virions themselves directly contribute to coagulation has never been evaluated. Future studies are now needed to investigate whether the virus membranes and/or particles in the circulation could contribute to coagulation, and which membranes support coagulation during infection, including blood cells and inflamed tissue. SARS-CoV-2 RNAemia has been reported in severe cases (58), and whilst it is unclear whether this represents virus particles, both viral genome and proteins have been detected broadly distributed throughout the body; indicating at least some systemic transfer in severe disease (59–61). These studies will also need to delineate the molecular mechanisms involved, including the participation of PS/PE. Nevertheless, knowing the levels and proportions of PE and PS on the outside of the virion envelope is a novel finding that will help further our understanding of the biology of the virus and could be applicable to other respiratory enveloped viruses, such as influenza.

Having determined the composition of the lipid membrane, we next tested the impact of common mouthwash formulations, focusing on surfactants that we reasoned would effectively target a PL-rich membrane. Our data significantly extend other recent studies on enveloped viruses. For example, dequalinium/benzalkonium chloride, PVP-I, and ethanol/essential oils reduced SARS-CoV2 infectivity *in vitro* by up to 3-log<sub>10</sub> (29), whereas infectivity of HCoV229E was reduced by 3–4-log<sub>10</sub> using CPC, ethanol/essential oils, and PVP-I (27, 30). Also, a moderate (3-log<sub>10</sub>) antiviral

effect of thymol/ethanol is consistent with an *in vivo* study on Listerine® Cool Mint against herpes simplex virus (HSV) (40, 62). However up to now, only one of the products (Listerine® Antiseptic, 26.9% ethanol/essential oils) has achieved 4-log<sub>10</sub> kill required to pass EN14476 as a virucidal, although this was tested against HCoV229E rather than SARS-CoV2 (30). Here, we employed live SARS-CoV2 England2 strain and demonstrated that several mouthwashes (Listerine® Advanced DGT, Dentyl Fresh Protect, Dentyl Dual Action) pass EN14476 against this virus.

Importantly, efficacy was not dependent on “classical” antibacterial components of mouthwashes but instead was critically dependent on the presence of surfactant (CPC/LAE). Whether any of the lipid-disrupting components would function in this way was not predictable from the outset; efficacy is determined by both molecular makeup and concentration, with some detergents (e.g., Tween-20) not inactivating SARS-CoV2 even at 0.5%, whereas others (e.g., Triton X-100) lyse it completely at 0.1% (63). Thus, our finding that components such as essential oils do not eliminate infectivity is equally important as the finding that CPC and LAE in mouthwashes do. CPC-containing mouthwashes were previously reported to reduce infectivity of other enveloped viruses, including HSV (64) and influenza (65), whereas LAE has shown antiviral activity toward HSV-1, vaccinia virus, and bovine parainfluenzae 3 (66). Thus, our results may be generally applicable to all enveloped viruses. The finding that LAE is virucidal both above and below cmc, and with or without ethanol, suggests that the virucidal activity of LAE is independent of micellar self-aggregation, and that the transfer of individual surfactant molecules into the viral envelope destabilizes the bilayer. The ability of CPC alone, at two concentrations above its cmc (1 mM), to fully inactivate SARS-CoV2 is likely because of micelle-forming surfactants having a very different “packing parameter” than the lipids in the viral bilayer (67). Mixing the surfactant with lipids may increase the local curvature, causing formation of separate micelles, effectively dissolving the bilayer. This is in line with reports showing evidence from electron microscopy that CPC disrupts the viral envelope (65, 68). Finally, the effect of surfactant was not charge dependent as both cationic and anionic surfactants were virucidal (Figs. 5B AND 7).

Whilst surfactants are highly antiviral in isolation, other mouthwash components may reduce their effectiveness. Benzoate can bind with CPC, dramatically reducing its cmc, without changing its micellar morphology (69, 70). Such interactions are typical for combinations of cationic surfactants and aromatic anions (71). A reduced cmc indicates a lower concentration of nonaggregated surfactant. The reduction in virucidal effect of CPC caused by benzoate—in SCD Max, may therefore be due to it reducing the concentration of monomeric CPC. Taken together, our data indicate



**Fig. 7.** Chemical structure of surfactants used in this study.

that whilst product selection is typically made on the basis of individual principal components, for example, CPC, chlorhexidine, or iodine, interactions between ingredients need to be carefully considered.

To address the theoretical potential for toxicity of mouthwash with long-term use, we compared cell disruption with viral infectivity and found some minor differences (Fig. 4F). These could be due to the fact that the virus membrane is deficient in some lipids that are known to be enriched in host plasma membrane (e.g., cholesterol, SM). Notably however, >25% of UK adults use mouthwashes daily with no ill effects reported, while mouthwash was used by almost 200 million Americans in 2020 (72) (<https://www.statista.com/statistics/286902/usage-mouthwash-dental-rinse-us-trend/>). While CPC-containing mouthwashes can show cytotoxicity against monolayers in vitro, the lack of observed toxicity in vivo likely reflects the complex, differentiated, and multicellular nature of primary oral epithelia (73). Furthermore, studies have demonstrated the effectiveness of CPC-containing mouthwashes in safely reducing gingival inflammation, despite concerns regarding perturbation of the oral microbiome (74, 75). In patients with COVID-19, increased disease severity was recently shown to be associated with moderate/severe periodontal disease (76). Associations between periodontal inflammation, cytokine release, and altered lipid metabolism have also been established in a range of comorbidities that associate with poorer COVID-19 outcome, including neurodegeneration, diabetes, and cardiovascular disease (77). Thus, as part of maintaining routine oral health, mouthwash use has potential to impact transmission and disease through both direct and indirect mechanisms.

In many parts of the world, clinical investigations of the oropharynx, including in primary care, dentistry, ENT, and maxillofacial surgery, have been severely curtailed because of the risk of SARS-CoV2 transmission from preclinical asymptomatic patients. Here,

interventions to reduce the salivary load in patients might be of benefit. Ideally, a large-scale trial would assess the ability of oral rinsing to impact on disease transmission and disease severity; however, this was not possible in the pandemic situation. Instead, we tested the in vivo efficacy of mouthwash on hospitalized “moderate” COVID patients (not requiring intensive medical support or ventilation) and showed a strong impact of surfactant-containing oral rinses on live virus load in saliva. Only three other studies have attempted to address these effects in vivo during the pandemic, and both were inconclusive because of small numbers of patients and the use of quantitative PCR rather than live virus titration to determine virus load (28, 78, 79).

Our clinical study was designed in the early part of the pandemic, prior to data becoming available showing that throat virus falls to undetectable levels by 9 days postsymptom onset (46). Thus, our study was challenged by recruitment (inability to provide informed consent and provide salivary samples), comorbidity and the inability to predict patients with saliva containing live virus (<40% of patients). The study was concluded at 6 months with 78 patients randomized; the largest sample to date of any study, with 27 patients having live virus in their saliva. While all mouthwashes were generally beneficial at 1 min, the CPC mouthwash (Dentyl Dual Action) was the most effective, significantly reducing live viral load over the entire time course and completely eliminating it for 1 h in multiple patients. An important caveat is that mouthwash use will not target virus in the lower respiratory tract. Whilst it remains unclear whether transmissible virus arises from the upper or lower respiratory tract, we have shown that infectious virus is found more commonly in the upper than the lower respiratory tract (44). Nevertheless, it remains the case that mouthwashes can destroy enveloped viruses in the oral cavity for sufficient time to enable a dental or an oral investigation. Future trials will be required to ensure that this effect is consistent in larger cohorts. However critically, current World Health Organization guidance proposes the use of hydrogen peroxide and PVP-I mouthwashes in dental surgery during the COVID-19 pandemic (<https://www.who.int/publications/i/item/who-2019-nCoV-oral-health-2020.1>). However, hydrogen peroxide only weakly inactivates SARS-CoV2 (80), and our data show that surfactant-containing mouthwash is more effective than PVP-I both in vitro and in vivo. Therefore, there may be a need to re-evaluate this advice.

In summary, we characterize the lipid membrane of SARS-CoV2, as being primarily comprised of PC, PE, and PI, with a high proportion of external aPL, and show that the fatty acyl molecular species present may vary depending on host cell. Importantly, an inability to maintain asymmetry in the lipid envelope results in live virus being highly procoagulant. We also show that surfactant mouthwash that targets the lipid membrane may be a useful component of infection prevention

and control strategies for respiratory enveloped viruses (e.g., influenza, SARS, Middle East respiratory syndrome, in addition to SARS-CoV2), during a pandemic. They have the potential to lessen the risk of transmission from asymptomatic carriers to health care professionals performing oropharynx investigations, as well as transmission within the wider population, in a similar manner as to how they are being tested against pathogenic oral bacteria (81–85). Larger population-based studies are now warranted to determine the impact of this biological effect on transmission. Importantly, the antiviral activity of oral rinses is not dependent on classical antibacterial components but instead depends on the sensitivity of the lipid envelope to surfactants as membrane-disrupting agents, which can be made cheaply and easily in low- and middle-income countries. The membrane of enveloped viruses is likely to remain susceptible to this approach irrespective of mutations that impact vaccine efficacy.

### Data availability

All data are included within the article. 

### Supplemental data

This article contains [supplemental data](#).

### Acknowledgments

Venture Life Group partfunded the clinical study but had no input in study design, data analysis, or drafting of the article.

### Author contributions


P. V. J., N. J. B., V. B. O., D. W. T., and R. J. S. conceptualization; R. C. M., H. K., W. J. G., P. V. J., N. J. B., V. B. O., D. W. T., and R. J. S. methodology; R. C. M., H. K., W. J. G., R. G. N., M. P., V. B. O., D. W. T., and R. J. S. formal analysis; Z. S., V. J. T., A. Z., M. B. P., E. S., K. B., D. A. W., P. D. S. R., J. A.-J., R. W. B., R. G. N., J. H., M. P., R. W. J. M., A. A., C.-A. L., D. O., N. J. B., V. B. O., D. W. T., and R. J. S. investigation; Z. S., V. J. T., R. C. M., H. K., W. J. G., R. G. N., V. B. O., D. W. T., and R. J. S. data curation; V. B. O., D. W. T., and R. J. S. writing—original draft; W. J. G. and N. J. B. writing—review & editing; Z. S., V. J. T., A. Z., M. B. P., M. P., V. B. O., D. W. T., and R. J. S. visualization; V. B. O., D. W. T., and R. J. S. supervision; V. B. O., D. W. T., and R. J. S. project administration; V. B. O., D. W. T., and R. J. S. funding acquisition.

### Author ORCIDs

Andreas Zaragkoulias  <https://orcid.org/0000-0002-2290-0128>


Majd B. Protty  <https://orcid.org/0000-0001-8992-9120>

Kirsten Bentley  <https://orcid.org/0000-0002-6619-2098>

Patricia Dos Santos Rodrigues  <https://orcid.org/0000-0003-0768-0013>

William J. Griffiths  <https://orcid.org/0000-0002-4129-6616>

Jorge Alvarez-Jarreta  <https://orcid.org/0000-0002-0946-0957>

Richard William Brown  <https://orcid.org/0000-0001-8182-7314>

Robert WJ. Mcleod  <https://orcid.org/0000-0003-3221-6896>

Niklaas J. Buurma  <https://orcid.org/0000-0003-0260-5057>

David W. Thomas  <https://orcid.org/0000-0001-7319-5820>

Richard J. Stanton  <https://orcid.org/0000-0002-6799-1182>

### Funding and additional information

R. J. S. was partly funded by UK Research and Innovation/National Institute of Health Research through the UK Coronavirus Immunology Consortium. V. J. T., D. W., M. P., and P. D. S. R. are supported in part by the Welsh Government/EU Ser Cymru Programme. M. B. P. was funded by a Wellcome Trust GW4CAT Training Fellowship (grant no.: 216278/Z/19/Z), and R. M. and M. J. P. are Welsh Clinical Academic Training Fellows. V. O. D. was a Royal Society Wolfson Merit Award Holder. A. Z. was funded by the Biotechnology and Biological Sciences Research Council (grant no.: BB/W003376/1). The content is solely the responsibility of the authors and does not necessarily represent the official views of the National Institutes of Health.

### Conflict of interest

Venture Life Group plc and Johnson & Johnson provided information on mouthwash formulations employed in the *in vitro* study. Venture Life Group partfunded the clinical study but had no input in study design, data analysis, or drafting of the article. The authors declare that they have no conflicts of interest with the contents of this article.

### Abbreviations

ACE2, angiotensin-converting enzyme 2; aPL, aminophospholipid; CE, cholesteryl ester; Cer, ceramide; cmc, critical micelle concentration; COVID-19, coronavirus disease 2019; CPC, cetylpyridinium chloride; CUR, curtain gas; DHCer, dihydroceramide; ER, endoplasmic reticulum; GSI, source gas 1; GS2, source gas 2; HILIC, hydrophilic interaction liquid chromatography; HSV, herpes simplex virus; IPM, isopropyl myristate; IS, ionization voltage; LAE, ethyl lauroyl arginate; LMSD, LIPID MAPS Structure Database; MRM, multiple reaction monitoring; PC, phosphatidylcholine; PE, phosphatidylethanolamine; PFU, plaque-forming unit; PG, phosphatidylglycerol; PI, phosphatidylinositol; PL, phospholipid; PS, phosphatidylserine; PVP-I, povidone-iodine; SARS-CoV2, severe acute respiratory syndrome coronavirus 2; SEC, size-exclusion chromatography; SL, sphingolipid; TAG, triacylglyceride; TEM, temperature; TG, triglyceride; TMPRSS2, transmembrane serine protease 2.

Manuscript received February 12, 2022, and in revised form March 23, 2022. Published, JLR Papers in Press, April 15, 2022, <https://doi.org/10.1016/j.jlr.2022.100208>

## REFERENCES

1. Garoff, H., Simons, K., and Dobberstein, B. (1978) Assembly of the Semliki Forest virus membrane glycoproteins in the membrane of the endoplasmic reticulum *in vitro*. *J. Mol. Biol.* **124**, 587–600

2. Gerl, M. J., Sampaio, J. L., Urban, S., Kalvodova, L., Verbavatz, J. M., Binnington, B., Lindemann, D., Lingwood, C. A., Shevchenko, A., Schroeder, C., and Simons, K. (2012) Quantitative analysis of the lipidomes of the influenza virus envelope and MDCK cell apical membrane. *J. Cell Biol.* **196**, 213–221
3. Paidassi, H., Tacnet-Delorme, P., Garlatti, V., Darnault, C., Ghebrehwet, B., Gaboriaud, C., Arlaud, G. J., and Frchet, P. (2008) Clq binds phosphatidylserine and likely acts as a multiligand-bridging molecule in apoptotic cell recognition. *J. Immunol.* **180**, 2329–2338
4. Cohen, J. R., Lin, L. D., and Machamer, C. E. (2011) Identification of a Golgi complex-targeting signal in the cytoplasmic tail of the severe acute respiratory syndrome coronavirus envelope protein. *J. Virol.* **85**, 5794–5803
5. McBride, C. E., Li, J., and Machamer, C. E. (2007) The cytoplasmic tail of the severe acute respiratory syndrome coronavirus spike protein contains a novel endoplasmic reticulum retrieval signal that binds COPI and promotes interaction with membrane protein. *J. Virol.* **81**, 2418–2428
6. Perrier, A., Bonnin, A., Desmarest, L., Danneels, A., Goffard, A., Rouille, Y., Dubuisson, J., and Belouzard, S. (2019) The C-terminal domain of the MERS coronavirus M protein contains a trans-Golgi network localization signal. *J. Biol. Chem.* **294**, 14406–14421
7. Tooze, J., Tooze, S. A., and Fuller, S. D. (1987) Sorting of progeny coronavirus from condensed secretory proteins at the exit from the trans-Golgi network of AtT20 cells. *J. Cell Biol.* **105**, 1215–1226
8. Tooze, S. A., Tooze, J., and Warren, G. (1988) Site of addition of N-acetyl-galactosamine to the E1 glycoprotein of mouse hepatitis virus-A59. *J. Cell Biol.* **106**, 1475–1487
9. van Meer, G. (1998) Lipids of the Golgi membrane. *Trends Cell Biol.* **8**, 29–33
10. Amara, A., and Mercer, J. (2015) Viral apoptotic mimicry. *Nat. Rev. Microbiol.* **13**, 461–469
11. Birge, R. B., Boeltz, S., Kumar, S., Carlson, J., Wanderley, J., Calianese, D., Barcinski, M., Brekken, R. A., Huang, X., Hutchins, J. T., Freimark, B., Empig, C., Mercer, J., Schroit, A. J., Schett, G., et al (2016) Phosphatidylserine is a global immunosuppressive signal in efferocytosis, infectious disease, and cancer. *Cell Death Differ.* **23**, 962–978
12. Chen, Y. H., Du, W., Hagemeijer, M. C., Takvorian, P. M., Pau, C., Cali, A., Brantner, C. A., Stempinski, E. S., Connelly, P. S., Ma, H. C., Jiang, P., Wimmer, E., Altan-Bonnet, G., and Altan-Bonnet, N. (2015) Phosphatidylserine vesicles enable efficient en bloc transmission of enteroviruses. *Cell.* **160**, 619–630
13. Feng, Z., Hensley, L., McKnight, K. L., Hu, F., Madden, V., Ping, L., Jeong, S. H., Walker, C., Lanford, R. E., and Lemon, S. M. (2013) A pathogenic picornavirus acquires an envelope by hijacking cellular membranes. *Nature.* **496**, 367–371
14. Mercer, J., and Helenius, A. (2008) Vaccinia virus uses macropinocytosis and apoptotic mimicry to enter host cells. *Science.* **320**, 531–535
15. Moller-Tank, S., Kondratowicz, A. S., Davey, R. A., Rennert, P. D., and Maury, W. (2013) Role of the phosphatidylserine receptor TIM-1 in enveloped-virus entry. *J. Virol.* **87**, 8327–8341
16. Morizono, K., and Chen, I. S. (2014) Role of phosphatidylserine receptors in enveloped virus infection. *J. Virol.* **88**, 4275–4290
17. Bohan, D., Van Ert, H., Ruggio, N., Rogers, K. J., Badreddine, M., Aguilar Briseño, J. A., Elliff, J. M., Rojas Chavez, R. A., Gao, B., Stokowy, T., Christakou, E., Kursula, P., Micklem, D., Gausdal, G., Haim, H., et al (2021) Phosphatidylserine receptors enhance SARS-CoV-2 infection. *PLoS Pathog.* **17**, e1009743
18. Makide, K., Uwamizu, A., Shinjo, Y., Ishiguro, J., Okutani, M., Inoue, A., and Aoki, J. (2014) Novel lysophospholipid receptors: their structure and function. *J. Lipid Res.* **55**, 1986–1995
19. Maceyka, M., and Spiegel, S. (2014) Sphingolipid metabolites in inflammatory disease. *Nature.* **510**, 58–67
20. Heemskerck, J. W., Bevers, E. M., and Lindhout, T. (2002) Platelet activation and blood coagulation. *Thromb. Haemost.* **88**, 186–193
21. Aiyar, N., Disa, J., Ao, Z., Ju, H., Nerurkar, S., Willette, R. N., Macphée, C. H., Johns, D. G., and Douglas, S. A. (2007) Lysophosphatidylcholine induces inflammatory activation of human coronary artery smooth muscle cells. *Mol. Cell Biochem.* **295**, 113–120
22. Li, Y. F., Li, R. S., Samuel, S. B., Cueto, R., Li, X. Y., Wang, H., and Yang, X. F. (2016) Lysophospholipids and their G protein-coupled receptors in atherosclerosis. *Front. Biosci. (Landmark Ed.)* **21**, 70–88
23. Matsumoto, T., Kobayashi, T., and Kamata, K. (2007) Role of lysophosphatidylcholine (LPC) in atherosclerosis. *Curr. Med. Chem.* **14**, 3209–3220
24. Yang, L. V., Radu, C. G., Wang, L., Riedinger, M., and Witte, O. N. (2005) Gi-independent macrophage chemotaxis to lysophosphatidylcholine via the immunoregulatory GPCR G2A. *Blood.* **105**, 1127–1134
25. O'Donnell, V. B., Thomas, D., Stanton, R., Maillard, J. Y., Murphy, R. C., Jones, S. A., Humphreys, I., Wakelam, M. J. O., Fegan, C., Wise, M. P., Bosch, A., and Sattar, S. A. (2020) Potential role of oral rinses targeting the viral lipid envelope in SARS-CoV-2 infection. *Function (Oxf.)* **1**, zqaa002
26. Meng, L., Hua, F., and Bian, Z. (2020) Coronavirus disease 2019 (COVID-19): emerging and future challenges for Dental and Oral Medicine. *J. Dent Res.* **99**, 481–487
27. [preprint] Green, A., Roberts, G., Tobery, T., Vincent, C., Barili, M., and Jones, C. (2020) In vitro assessment of the virucidal activity of four mouthwashes containing Cetylpyridinium Chloride, ethanol, zinc and a mix of enzyme and proteins against a human coronavirus. *bioRxiv*. <https://doi.org/10.1101/2020.10.28.359257>
28. Martinez Lamas, L., Diz Dios, P., Perez Rodriguez, M. T., Del Campo Perez, V., Cabrera Alvargonzalez, J. J., Lopez Dominguez, A. M., Fernandez Feijoo, J., Diniz Freitas, M., and Limeres Posse, J. (2020) Is povidone iodine mouthwash effective against SARS-CoV-2? First in vivo tests. *Oral Dis.* <https://doi.org/10.1111/odi.13526>
29. Meister, T. L., Bruggemann, Y., Todt, D., Conzelmann, C., Muller, J. A., Gross, R., Munch, J., Krawczyk, A., Steinmann, J., Steinmann, J., Pfaender, S., and Steinmann, E. (2020) Virucidal Efficacy of different Oral Rinses against Severe Acute Respiratory Syndrome Coronavirus 2. *J. Infect. Dis.* **222**, 1289–1292
30. Meyers, C., Robison, R., Milici, J., Alam, S., Quillen, D., Goldenberg, D., and Kass, R. (2021) Lowering the transmission and spread of human coronavirus. *J. Med. Virol.* **93**, 1605–1612
31. Tadakamadla, J., Boccalari, E., Rathore, V., Dolci, C., Tartaglia, G. M., and Tadakamadla, S. K. (2021) In vitro studies evaluating the efficacy of mouth rinses on Sars-Cov-2: A systematic review. *J. Infect. Public Health.* **14**, 1179–1185
32. Rodriguez-Casnovas, H. J., la Rosa, M. D., Bello-Lemus, Y., Rasperini, G., and Acosta-Hoyos, A. J. (2022) Virucidal activity of different mouthwashes using a novel biochemical assay. *Healthcare.* **10**, 63
33. da Silva Santos, P. S., da Fonseca Orcina, B., Machado, R. R. G., Vilhena, F. V., da Costa Alves, L. M., Zangrando, M. S. R., de Oliveira, R. C., Soares, M. Q. S., Simão, A. N. C., Pietro, E. C. I. N., Kuroda, J. P. G., de Almeida Benjamim, I. A., Araujo, D. B., Toma, S. H., Flor, L., et al (2021) Beneficial effects of a mouthwash containing an antiviral phthalocyanine derivative on the length of hospital stay for COVID-19: randomised trial. *Sci. Rep.* **11**, 19937
34. Gutiérrez-García, R., De La Cerda-Angeles, J. C., Cabrera-Licona, A., Delgado-Enciso, I., Ruvitch-Sigal, N., and Paz-Michel, B. A. (2022) Nasopharyngeal and oropharyngeal rinses with neutral electrolyzed water prevents COVID-19 in front-line health professionals: a randomized, open-label, controlled trial in a general hospital in Mexico City. *Biomed. Rep.* **16**, 11
35. Vance, J. E. (2015) Phospholipid synthesis and transport in mammalian cells. *Traffic.* **16**, 1–18
36. Rihn, S. J., Merits, A., Bakshi, S., Turnbull, M. L., Wickenhagen, A., Alexander, A. J. T., Baillie, C., Brennan, B., Brown, F., Brunker, K., Bryden, S. R., Burness, K. A., Carmichael, S., Cole, S. J., Cowton, V. M., et al (2021) A plasmid DNA-launched SARS-CoV-2 reverse genetics system and coronavirus toolkit for COVID-19 research. *PLoS Biol.* **19**, e3001091
37. Smith, C. A., Want, E. J., O'Maille, G., Abagyan, R., and Siuzdak, G. (2006) XCMS: processing mass spectrometry data for metabolite profiling using nonlinear peak alignment, matching, and identification. *Anal. Chem.* **78**, 779–787
38. Alvarez-Jarreta, J., Rodrigues, P. R. S., Fahy, E., O'Connor, A., Price, A., Gaud, C., Andrews, S., Benton, P., Siuzdak, G., Hawksworth, J. I., Valdivia-Garcia, M., Allen, S. M., and O'Donnell, V. B. (2021) LipidFinder 2.0: advanced informatics pipeline for lipidomics discovery applications. *Bioinformatics.* **37**, 1478–1479
39. Thomas, C. P., Clark, S. R., Hammond, V. J., Aldrovandi, M., Collins, P. W., and O'Donnell, V. B. (2014) Identification and quantification of aminophospholipid molecular species on the surface of apoptotic and activated cells. *Nat. Protoc.* **9**, 51–63

40. Meiller, T. F., Silva, A., Ferreira, S. M., Jabra-Rizk, M. A., Kelley, J. I., and DePaola, L. G. (2005) Efficacy of Listerine Antiseptic in reducing viral contamination of saliva. *J. Clin. Periodontol.* **32**, 341–346
41. Sud, M., Fahy, E., Cotter, D., Brown, A., Dennis, E. A., Glass, C. K., Merrill, A. H., Jr., Murphy, R. C., Raetz, C. R., Russell, D. W., and Subramaniam, S. (2007) LMSD: LIPID MAPS structure database. *Nucl. Acids Res.* **35**, D527–532
42. Liebisch, G., Fahy, E., Aoki, J., Dennis, E. A., Durand, T., Ejsing, C. S., Fedorova, M., Feussner, I., Griffiths, W. J., Kofeler, H., Merrill, A. H., Jr., Murphy, R. C., O'Donnell, V. B., Oskolkova, O., Subramaniam, S., *et al.* (2020) Update on LIPID MAPS classification, nomenclature, and shorthand notation for MS-derived lipid structures. *J. Lipid Res.* **61**, 1539–1555
43. Clark, S. R., Thomas, C. P., Hammond, V. J., Aldrovandi, M., Wilkinson, G. W., Hart, K. W., Murphy, R. C., Collins, P. W., and O'Donnell, V. B. (2013) Characterization of platelet aminophospholipid externalization reveals fatty acids as molecular determinants that regulate coagulation. *Proc. Natl. Acad. Sci. U. S. A.* **110**, 5875–5880
44. Saud, Z., Ponsford, M., Bentley, K., Cole, J. M., Pandey, M., Jolles, S., Fegan, C., Humphreys, I., Wise, M. P., and Stanton, R. (2022) Mechanically ventilated patients shed high titre live SARS-CoV2 for extended periods from both the upper and lower respiratory tract. *Clin. Infect. Dis.* [ciac170](https://doi.org/10.1093/cid/ciac170). <https://doi.org/10.1093/cid/ciac170>
45. Asker, D., Weiss, J., and McClements, D. J. (2009) Analysis of the interactions of a cationic surfactant (lauric arginate) with an anionic biopolymer (pectin): isothermal titration calorimetry, light scattering, and microelectrophoresis. *Langmuir.* **25**, 116–122
46. Cevik, M., Tate, M., Lloyd, O., Maraolo, A. E., Schafers, J., and Ho, A. (2021) SARS-CoV-2, SARS-CoV, and MERS-CoV viral load dynamics, duration of viral shedding, and infectiousness: a systematic review and meta-analysis. *Lancet Microbe.* **2**, e13–e22
47. Simons, K., and Ikonen, E. (1997) Functional rafts in cell membranes. *Nature.* **387**, 569–572
48. Ikonen, E. (2008) Cellular cholesterol trafficking and compartmentalization. *Nat. Rev. Mol. Cell Biol.* **9**, 125–138
49. de Meyer, F., and Smit, B. (2009) Effect of cholesterol on the structure of a phospholipid bilayer. *Proc. Natl. Acad. Sci. U. S. A.* **106**, 3654–3658
50. Shinitzky, M., and Barenholz, Y. (1974) Dynamics of the hydrocarbon layer in liposomes of lecithin and sphingomyelin containing dicetylphosphate. *J. Biol. Chem.* **249**, 2652–2657
51. Brender, J., McHenry, A., and Ramamoorthy, A. (2012) Does cholesterol play a role in the bacterial selectivity of antimicrobial peptides? *Front. Immunol.* **3**, 195
52. Ghosh, S., Dellibovi-Ragheb, T. A., Kerviel, A., Pak, E., Qiu, Q., Fisher, M., Takvorian, P. M., Bleck, C., Hsu, V. W., Fehr, A. R., Perlman, S., Achar, S. R., Straus, M. R., Whittaker, G. R., de Haan, C. A. M., *et al.* (2020) beta-Coronaviruses use lysosomes for egress instead of the biosynthetic secretory pathway. *Cell.* **183**, 1520–1535.e1514
53. Alpert, S. E., Walenga, R. W., Kramer, C. M., Silski, C. L., and Davis, P. B. (1992) Tracheal epithelial cell fatty acid composition modulates prostaglandin E2 and cAMP production. *Am. J. Physiol.* **262**, L192–L197
54. Holtzman, M. J., Grunberger, D., and Hunter, J. A. (1986) Phospholipid fatty acid composition of pulmonary airway epithelial cells: potential substrates for oxygenation. *Biochim. Biophys. Acta.* **877**, 459–464
55. Madjid, M., Aboshady, I., Awan, I., Litovsky, S., and Casscells, S. W. (2004) Influenza and cardiovascular disease: is there a causal relationship? *Tex. Heart Inst. J.* **31**, 4–13
56. Nguyen, J. L., Yang, W., Ito, K., Matte, T. D., Shaman, J., and Kinney, P. L. (2016) Seasonal Influenza infections and Cardiovascular disease mortality. *JAMA Cardiol.* **1**, 274–281
57. Udell, J. A., Zawi, R., Bhatt, D. L., Keshtkar-Jahromi, M., Gaughran, F., Phrommintikul, A., Ciszewski, A., Vakili, H., Hoffman, E. B., Farkouh, M. E., and Cannon, C. P. (2013) Association between influenza vaccination and cardiovascular outcomes in high-risk patients: a meta-analysis. *JAMA.* **310**, 1711–1720
58. Zheng, S., Fan, J., Yu, F., Feng, B., Lou, B., Zou, Q., Xie, G., Lin, S., Wang, R., Yang, X., Chen, W., Wang, Q., Zhang, D., Liu, Y., Gong, R., *et al.* (2020) Viral load dynamics and disease severity in patients infected with SARS-CoV-2 in Zhejiang province, China, January–March 2020: retrospective cohort study. *BMJ.* **369**, m1443
59. Deinhardt-Emmer, S., Wittschieber, D., Sanft, J., Kleemann, S., Elschner, S., Haupt, K. F., Vau, V., Haring, C., Rodel, J., Henke, A., Ehrhardt, C., Bauer, M., Philipp, M., Gassler, N., Nietzsche, S., *et al.* (2021) Early postmortem mapping of SARS-CoV-2 RNA in patients with COVID-19 and the correlation with tissue damage. *Elife.* **10**, e60361
60. Trypsteen, W., Van Cleemput, J., Snippenberg, W. V., Gerlo, S., and Vandekerckhove, L. (2020) On the whereabouts of SARS-CoV-2 in the human body: a systematic review. *PLoS Pathog.* **16**, e1009037
61. [preprint] Madden, P. J., Thomas, Y., Blair, R. V., Samer, S., Doyle, M., Midkiff, C. C., Becker, M. E., Arif, M. S., McRaven, M. D., Simons, L. M., Carias, A. M., Martinelli, E., Lorenzo-Redondo, R., Hultquist, J. F., Villinger, F. J., *et al.* (2022) An immunopET probe to SARS-CoV-2 reveals early infection of the male genital tract in rhesus macaques. *bioRxiv*. <https://doi.org/10.1101/2022.02.25.481974>
62. Astani, A., Reichling, J., and Schnitzler, P. (2010) Comparative study on the antiviral activity of selected monoterpenes derived from essential oils. *Phytother. Res.* **24**, 673–679
63. Welch, S. R., Davies, K. A., Buczkowski, H., Hettiarachchi, N., Green, N., Arnold, U., Jones, M., Hannah, M. J., Evans, R., Burton, C., Burton, J. E., Guiver, M., Cane, P. A., Woodford, N., Bruce, C. B., *et al.* (2020) Analysis of inactivation of SARS-CoV-2 by specimen transport media, nucleic acid extraction reagents, detergents, and fixatives. *J. Clin. Microbiol.* **58**, e01713–20
64. Shishu, Rajan, S., and Kamalpreet. (2009) Development of novel microemulsion-based topical formulations of acyclovir for the treatment of cutaneous herpetic infections. *AAPS PharmSciTech.* **10**, 559–565
65. Popkin, D. L., Zilka, S., Dimaano, M., Fujioka, H., Rackley, C., Salata, R., Griffith, A., Mukherjee, P. K., Ghannoum, M. A., and Esper, F. (2017) Cetylpyridinium Chloride (CPC) exhibits potent, rapid activity against Influenza Viruses in vitro and in vivo. *Pathog. Immun.* **2**, 252–269
66. Bonvila Xavier, R., Roca Sergi, F., and Segret Pons, R. (2009) Antiviral use of Cationic Surfactant. NOVACYT
67. Israelachvili, J. N., Mitchell, D. J., and Ninham, B. W. (1976) Theory of self-assembly of hydrocarbon amphiphiles into micelles and bilayers. *J. Chem. Society-Faraday Trans. II.* **72**, 1525–1568
68. Steyer, A., Marušić, M., Kolenc, M., and Triglav, T. (2021) A throat lozenge with fixed combination of cetylpyridinium chloride and benzydamine hydrochloride has direct virucidal effect on SARS-CoV-2. *COVID.* **1**, 435–446
69. Mahmoud, F. Z., Christian, S. D., Tucker, E. E., Taha, A. A., and Scamehorn, J. F. (1989) Semiequilibrium dialysis study of the solubilization of benzoate anion by aqueous hexadecylpyridinium chloride. *J. Phys. Chem.* **93**, 5903–5906
70. Mukhim, T., Dey, J., Das, S., and Ismail, K. (2010) Aggregation and adsorption behavior of cetylpyridinium chloride in aqueous sodium salicylate and sodium benzoate solutions. *J. Colloid Interf. Sci.* **350**, 511–515
71. Buurma, N. J. (2017) Aggregation and reactivity in aqueous solutions of cationic surfactants and aromatic anions across concentration scales. *Curr. Opin. Colloid Interf. Sci.* **32**, 69–75
72. Macfarlane, T. V., Kawecky, M. M., Cunningham, C., Bovaird, I., Morgan, R., Rhodes, K., and Watkins, R. (2011) Mouthwash use in general population: results from adult dental health survey in grampian, Scotland. *J. Oral Maxillofac. Res.* **1**, e2
73. Muller, H. D., Eick, S., Moritz, A., Lussi, A., and Gruber, R. (2017) Cytotoxicity and antimicrobial activity of oral rinses in vitro. *Biomed. Res. Int.* **2017**, 4019723
74. Joshipura, K. J., Munoz-Torres, F. J., Morou-Bermudez, E., and Patel, R. P. (2017) Over-the-counter mouthwash use and risk of pre-diabetes/diabetes. *Nitric Oxide.* **71**, 14–20
75. Rosing, C. K., Cavagni, J., Gaio, E. J., Muniz, F., Ranzan, N., Oballe, H. J. R., Friedrich, S. A., Severo, R. M., Stewart, B., and Zhang, Y. P. (2017) Efficacy of two mouthwashes with cetylpyridinium chloride: a controlled randomized clinical trial. *Braz. Oral Res.* **31**, e47
76. Marouf, N., Cai, W., Said, K. N., Daas, H., Diab, H., Chinta, V. R., Hssain, A. A., Nicolau, B., Sanz, M., and Tamimi, F. (2021) Association between periodontitis and severity of COVID-19 infection: a case-control study. *J. Clin. Periodontol.* **48**, 483–491
77. Holmstrup, P., Damgaard, C., Olsen, I., Klinge, B., Flyvbjerg, A., Nielsen, C. H., and Hansen, P. R. (2017) Comorbidity of

- periodontal disease: two sides of the same coin? An introduction for the clinician. *J. Oral Microbiol.* **9**, 1332710
78. Yoon, J. G., Yoon, J., Song, J. Y., Yoon, S. Y., Lim, C. S., Seong, H., Noh, J. Y., Cheong, H. J., and Kim, W. J. (2020) Clinical significance of a high SARS-CoV-2 viral load in the saliva. *J. Korean Med. Sci.* **35**, e195
  79. Costa, D. D., Brites, C., Vaz, S. N., de Santana, D. S., Dos Santos, J. N., and Cury, P. R. (2021) Chlorhexidine mouthwash reduces the salivary viral load of SARS-CoV-2: a randomized clinical trial. *Oral Dis.* <https://doi.org/10.1111/odi.14086>
  80. [preprint] Davies, K., Buczkowski, H., Welch, S. R., Green, N., Mawer, D., Woodford, N., Roberts, A. D., Nixon, P. J., Seymour, D. W., and Killip, M. J. (2020) Effective *in-vitro* inactivation of SARS-CoV-2 by commercially available mouthwashes. *bioRxiv.* <https://doi.org/10.1101/2020.12.02.408047>
  81. Van Dijck, C., Tsoumanis, A., Rotsaert, A., Vuylsteke, B., Van den Bossche, D., Paeleman, E., De Baetselier, I., Brosius, I., Laumen, J., Buyze, J., Wouters, K., Lynen, L., Van Esbroeck, M., Herssens, N., Abdellati, S., *et al.* (2021) Antibacterial mouthwash to prevent sexually transmitted infections in men who have sex with men taking HIV pre-exposure prophylaxis (PREGo): a randomised, placebo-controlled, crossover trial. *Lancet Infect. Dis.* **21**, 657–667
  82. Chow, E. P., Howden, B. P., Walker, S., Lee, D., Bradshaw, C. S., Chen, M. Y., Snow, A., Cook, S., Fehler, G., and Fairley, C. K. (2017) Antiseptic mouthwash against pharyngeal *Neisseria gonorrhoeae*: a randomised controlled trial and an in vitro study. *Sex. Transm. Infect.* **93**, 88–93
  83. Chow, E. P. F., Williamson, D. A., Hocking, J. S., Law, M. G., Maddaford, K., Bradshaw, C. S., McNulty, A., Templeton, D. J., Moore, R., Murray, G. L., Danielewski, J. A., Wigan, R., Chen, M. Y., Guy, R. J., Zhang, L., *et al.* (2021) Antiseptic mouthwash for gonorrhoea prevention (OMEGA): a randomised, double-blind, parallel-group, multicentre trial. *Lancet Infect. Dis.* **21**, 647–656
  84. Fairley, C. K., Zhang, L., and Chow, E. P. F. (2018) New thinking on gonorrhoea control in MSM: are antiseptic mouthwashes the answer? *Curr. Opin. Infect. Dis.* **31**, 45–49
  85. de Vries, H. J. C., and van der Loeff, M. F. S. (2021) Antiseptic mouthwashes against sexually transmitted infections. *Lancet Infect. Dis.* **21**, 583–584