

VOLUME 28 NUMBER 2 APRIL 2022

pISSN 2287-2728  
eISSN 2387-285X

# CLINICAL and MOLECULAR HEPATOLOGY

The forum for latest knowledge of hepatobiliary diseases

Serum TNF- $\alpha$  and sarcopenia in liver cirrhosis

Klotho rs495392 and NAFLD

Prevalence trends of NAFLD among young Korean men

Surgery vs. RFA in single small HCC

Galectin-3 and cirrhotic cardiomyopathy

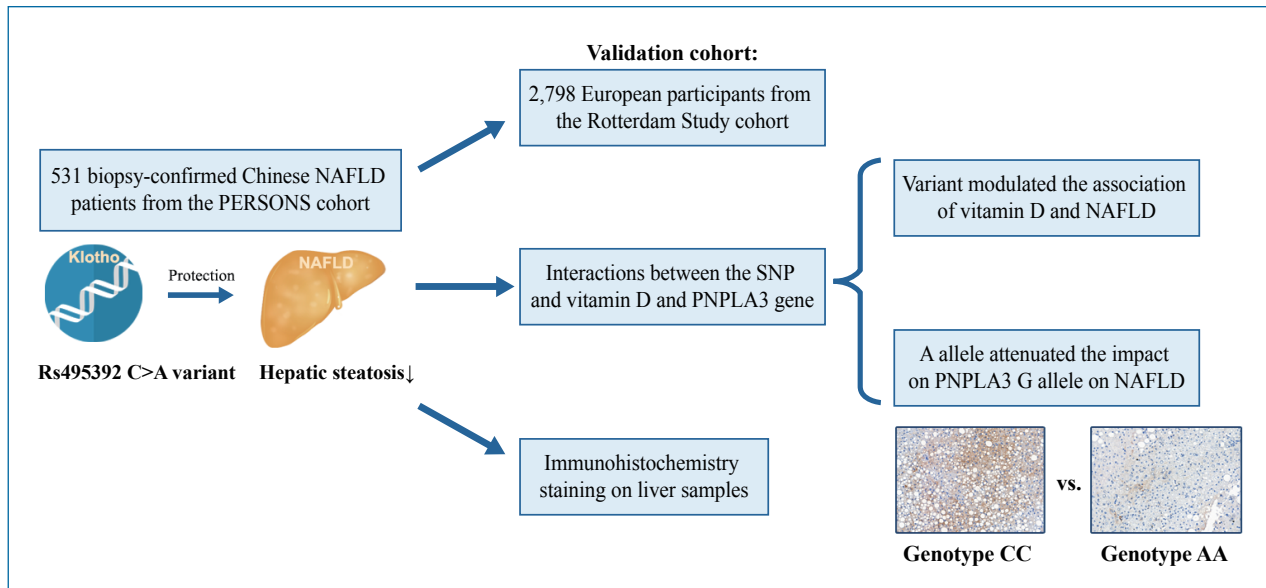
**Original Article**

# Protective association of Klotho rs495392 gene polymorphism against hepatic steatosis in non-alcoholic fatty liver disease patients

Wen-Yue Liu<sup>1</sup>, Xiaofang Zhang<sup>2</sup>, Gang Li<sup>3</sup>, Liang-Jie Tang<sup>3</sup>, Pei-Wu Zhu<sup>4</sup>, Rafael S. Rios<sup>3</sup>, Kenneth I. Zheng<sup>3</sup>, Hong-Lei Ma<sup>3</sup>, Xiao-Dong Wang<sup>5</sup>, Qiuwei Pan<sup>6</sup>, Robert J. de Knegt<sup>6</sup>, Luca Valenti<sup>7,8</sup>, Mohsen Ghanbari<sup>2</sup>, and Ming-Hua Zheng<sup>3,5,9</sup>

<sup>1</sup>Department of Endocrinology, the First Affiliated Hospital of Wenzhou Medical University, Wenzhou, China; <sup>2</sup>Department of Epidemiology, Erasmus MC University Medical Center, Rotterdam, the Netherlands; <sup>3</sup>NAFLD Research Center, Department of Hepatology, the First Affiliated Hospital of Wenzhou Medical University, Wenzhou; <sup>4</sup>Department of Laboratory Medicine, the First Affiliated Hospital of Wenzhou Medical University, Wenzhou; <sup>5</sup>Key Laboratory of Diagnosis and Treatment for the Development of Chronic Liver Disease in Zhejiang Province, Wenzhou, China; <sup>6</sup>Department of Gastroenterology and Hepatology, Erasmus MC, Erasmus University Medical Center, Rotterdam, the Netherlands; <sup>7</sup>Department of Transfusion Medicine and Hematology, Fondazione IRCCS Ca' Granda Ospedale Maggiore Policlinico Milano, Milan; <sup>8</sup>Department of Pathophysiology and Transplantation, University of Milan, Milano, Italy; <sup>9</sup>Institute of Hepatology, Wenzhou Medical University, Wenzhou, China

## Graphical Abstract



**Background/Aims:** Non-alcoholic fatty liver disease (NAFLD) is closely associated with metabolic dysfunction. Among the multiple factors, genetic variation acts as important modifiers. *Klotho*, an enzyme encoded by the *klotho* (*KL*) gene in human, has been implicated in the pathogenesis of metabolic dysfunctions. However, the impact of variants in *KL* on NAFLD risk remains poorly understood. The aim of this study was to investigate the impact of *KL* rs495392 C>A polymorphism on the histological severity of NAFLD.

**Methods:** We evaluated the impact of the *KL* rs495392 polymorphism on liver histology in 531 Chinese with NAFLD and replicated that in the population-based Rotterdam Study cohort. The interactions between the rs495392, vitamin D, and patatin-like phospholipase domain containing 3 (*PNPLA3*) rs738409 polymorphism were also analyzed.

**Results:** Carriage of the rs495392 A allele had a protective effect on steatosis severity (odds ratio [OR], 0.61; 95% confidence interval [CI], 0.42–0.89;  $P=0.010$ ) in Chinese patients. After adjustment for potential confounders, the A allele remained significant with a protective effect (OR, 0.66; 95% CI, 0.45–0.98;  $P=0.040$ ). The effect on hepatic steatosis was confirmed in the Rotterdam Study cohort. Additional analysis showed the association between serum vitamin D levels and NAFLD specifically in rs495392 A allele carriers, but not in non-carriers. Moreover, we found that the rs495392 A allele attenuated the detrimental impact of *PNPLA3* rs738409 G allele on the risk of severe hepatic steatosis.

**Conclusions:** The *KL* rs495392 polymorphism has a protective effect against hepatic steatosis in patients with NAFLD. (*Clin Mol Hepatol* 2022;28:183-195)

**Keywords:** Non-alcoholic fatty liver disease; *Klotho* proteins; Vitamin D; Polymorphism; Single nucleotide

### Study Highlights

In present study, we demonstrated a protective effect of *KL* rs495392 gene variant against hepatic steatosis in patients with NAFLD, indicating a therapeutic potential of *Klotho* in NAFLD. Rs495392 gene variant also modulated the role of vitamin D in NAFLD, which may partly explain the differential impact of vitamin D status and failure of vitamin D treatment in previous study. Moreover, present study revealed a potential interaction between *PNPLA3* and *KL* genes in NAFLD.

## INTRODUCTION

Non-alcoholic fatty liver disease (NAFLD) is shown to be closely associated with metabolic dysfunction including insulin resistance (IR), dyslipidemia, and obesity.<sup>1</sup> NAFLD comprises a spectrum of

diseases, ranging from simple steatosis to varying degrees of fibrosis and cirrhosis.<sup>2</sup> In the last decade, more than one-quarter of the global population is suffering from the disease.<sup>3</sup> and an effective pharmacotherapy has yet to be approved. The metabolic dysfunction in fatty liver disease arises from multiple factors, with

### Abbreviations:

1,25(OH)<sub>2</sub>D, 1,25-dihydroxyvitamin D; 25(OH)D, 25-dihydroxyvitamin D; BMI, body mass index; CI, confidence interval; CSF, cerebrospinal fluid; CVC, cross-validation consistency; eQTL, expression quantitative trait loci; FGF23, fibroblast growth factor 23; FLI, fatty liver index; GMDR, generalized multifactor dimensionality reduction; HDL-c, high-density lipoprotein cholesterol; HOMA-IR, homeostasis model assessment-insulin resistance; HWE, Hardy-Weinberg equilibrium; IHC, immunohistochemistry; IR, insulin resistance; KL, *klotho*; LSM, liver stiffness measurement; NAFLD, non-alcoholic fatty liver disease; NAS, NAFLD Activity Score; OR, odds ratio; PNPLA3, patatin-like phospholipase domain containing 3; PPAR, peroxisome proliferator-activated receptor; RS, Rotterdam Study; sKL, soluble *Klotho*; SNP, single nucleotide polymorphism; TA, testing accuracy; RS, Rotterdam Study

### Corresponding author : Ming-Hua Zheng

NAFLD Research Center, Department of Hepatology, the First Affiliated Hospital of Wenzhou Medical University, No. 2 Fuxue Lane, Wenzhou 325000, China

Tel: +86-577-55579622, Fax: +86-577-55578522

E-mail: zhengmh@wmu.edu.cn

<https://orcid.org/0000-0003-4984-2631>

### Mohsen Ghanbari

Department of Epidemiology, Erasmus MC University Medical Center, Doctor Molewaterplein 40, Rotterdam 3015 GD, the Netherlands

Tel: +31-107044228, Fax: +31-107044657

E-mail: m.ghanbari@erasmusmc.nl

<https://orcid.org/0000-0002-9476-7143>

**Editor:** Won Kim, Seoul National University College of Medicine, Korea

**Received :** Sep. 20, 2021 / **Revised :** Nov. 11, 2021 / **Accepted :** Nov. 27, 2021

genes acting as important modifiers. In recent years, multiple large genetic studies have enriched our understanding of the genetic determinants of fatty liver disease.<sup>4</sup> For instance, the patatin-like phospholipase domain containing 3 (*PNPLA3*) rs738409 C>G variant (p.I148M) has been identified as a major genetic determinant contributing to hepatic fat accumulation and liver fibrosis.<sup>4,5</sup> The potential value of genetic modifiers not only lies in understanding of the pathogenesis of fatty liver disease but also in the designs of new therapeutics.

Klotho, also known as alpha-Klotho, is a well-documented anti-aging protein. It mediates various physiological functions including maintenance of phosphate and calcium homeostasis, attenuation of oxidative stress, suppression of inflammation, and regulation of energy metabolism.<sup>6</sup> It is primarily expressed in the kidney, parathyroid gland, brain, and adipose tissue as a single-pass transmembrane glycoprotein and serves as co-receptor for fibroblast growth factor 23 (FGF23).<sup>7</sup> There are at least two isoforms of Klotho, a transmembrane form and a soluble form, named soluble Klotho (sKL) in the blood circulation.<sup>8</sup> A previous study using animal models observed that Klotho-knockout mice experienced extreme leanness and a significant reduction of hepatic fat accumulation,<sup>9</sup> suggesting a possible direct role in the pathophysiology of fatty liver disease. Analyses of human Klotho (*KL*) gene polymorphisms revealed their impact on bone density,<sup>10</sup> metabolic syndrome,<sup>11</sup> chronic kidney disease,<sup>12</sup> cardioembolism,<sup>13</sup> and coronary artery diseases.<sup>14</sup> Recently, *KL* rs495392 intronic variant has been suggested to be associated with a decreased risk of atheromatosis and vascular calcification in patients with chronic kidney disease.<sup>15,16</sup> The pathophysiology of atheromatosis is an accumulation and swelling in artery walls made up of macrophage cells, or debris, and contain, among others, lipids (cholesterol and fatty acids). The single nucleotide polymorphism (SNP) rs495392 locates in an intronic region of the *KL* gene; thus, no variations in the Klotho protein sequence are expected. However, rs495392 has been shown to affect the *KL* gene expression in blood in previous expression quantitative trait loci (eQTL) data.<sup>17</sup> Given the possibility of altering *KL* expression and the role in lipid accumulation, the *KL* rs495392 polymorphism may have an impact on the susceptibility to fatty liver disease. Therefore, it is pivotal to explore the effect of rs495392 in liver disease.

Vitamin D exerts diverse physiological effects on calcium and phosphate homeostasis, insulin sensitivity, anti-inflammation, and anti-fibrosis.<sup>18</sup> Some studies have suggested that serum vitamin D status was associated with the severity of fatty liver disease and

its supplementation could improve insulin sensitivity in patients with fatty liver disease.<sup>19-21</sup> It has been shown that active vitamin D can upregulate the expression of the *KL* gene through vitamin D-responsive elements, while Klotho/FGF23 axis suppresses the activation of vitamin D.<sup>22</sup> Therefore, it is also important to speculate whether *KL* rs495392 polymorphism alters the effect of vitamin D on fatty liver disease.

The aims of this study were: 1) to explore the association of *KL* rs495392 polymorphism with hepatic steatosis in patients with NAFLD, 2) to clarify whether the role of vitamin D on NAFLD is different under the *KL* gene variant, and 3) to discern if there is any interaction between the *PNPLA3* rs738409 and *KL* rs495392 gene polymorphisms.

## MATERIALS AND METHODS

### Design and study population

The study population was individuals recruited from the PERSONS project (January 2017 to September 2020). The diagnostic criteria for NAFLD have been described previously.<sup>23</sup> Briefly, patients with biopsy-confirmed fatty liver without a secondary liver disease (including alcohol use disorder, viral hepatitis, autoimmune hepatitis, hepatocellular carcinoma, etc.) have been included. A total of 531 Chinese patients with biopsy-confirmed NAFLD were enrolled.

### Clinical data and laboratory examinations

Medical history, former drug use information and other clinical information is recorded at the baseline. Biochemical data were collected from all patients within 24 hours of liver biopsy. Body mass index (BMI) was calculated as weight (kg) divided by the square of height (m). IR was estimated according by the homoeostasis model assessment (commonly referred to as HOMA).<sup>24</sup> The threshold for IR was defined as HOMA-IR (homeostasis model assessment-insulin resistance) score  $\geq 2.73$ .<sup>25</sup> Diagnosis of diabetes was based on criteria of the American Diabetes Association.<sup>26</sup> Serum level of 25-hydroxyvitamin D [25(OH)D] was measured to show vitamin D status and defined as: vitamin D sufficiency  $\geq 75$  nmol/L, insufficiency 50–75 nmol/L, and deficiency  $< 50$  nmol/L.

### Histological assessment of the liver

Liver biopsies were performed using a 16-gauge needle under

ultrasound guidance. The histology was reviewed by a single liver pathologist (X.D.W.) who was blinded to the clinical and biochemical data. Histological parameters were defined based on the NAFLD Activity Score (NAS) system by Kleiner et al.<sup>27</sup> Severe steatosis, severe ballooning, severe lobular inflammation, and significant fibrosis were defined if their scores were  $\geq 2$ .

### Immunohistochemistry (IHC) staining

IHC staining was carried out on liver samples to observe the presence of Klotho protein. First, the sections were treated with a citric acid antigen retrieval buffer for antigen retrieval. After blocking endogenous peroxidase activity, sections were incubated with primary antibodies in a washing buffer for 12 hours at 4°C. Then, tissue slides were washed thrice with phosphate buffered saline, and an appropriate secondary antibody was added. Finally, the sections were treated with streptavidin-horseradish peroxidase complex and diaminobenzidine solution, and counterstained with hematoxylin. The primary antibody was against sKL (Abcam, Cambridge, MA, USA). Images of the sections were acquired by light microscopy, using a Adimec Q-12A-180Fc microscope (Adimec, Eindhoven, the Netherlands). The semiquantitative analysis of Klotho expression was measured by Image Pro-Plus v. 6.0 software (Media Cybernetics, Bethesda, MD, USA).

### SNP genotyping

The genotyping of *KL* rs495392 C>A and *PNPLA3* rs738409 C>G variants was performed using the MassARRAY (Agena Biosciences, San Diego, CA, USA) according to the manufacturer's protocol. For the purpose of genotyping, each sample used approximately 20 ng of genomic DNA. The primer sequences were the following: forward 5'-ACGTTGGATGGGAGGAAGAAATACTTGAGAC-3', reverse 5'-ACGTTGGATGTAATTGTAACACCCTTGTGC-3' (rs495392); forward 5'-ACGTTGGATGCTCCTTTGCTTTCACAGGC-3', reverse 5'-ACGTTGGATGCTGAAGGAAGGAGGGA TAAG-3' (rs738409).

### Statistical analysis

Statistical analyses were performed using R software (v3.5.2; R Foundation for Statistical Computing, Vienna, Austria), SPSS (ver. 20.0; SPSS Inc., Armonk, NY, USA). Continuous variables are expressed as means  $\pm$  standard deviations for those with a normal distribution and as medians (p25–p75) for those with a non-nor-

mal distribution. Categorical variables are expressed as frequency (%). Comparisons between groups were done using t test, Mann-Whitney test, and chi-squared test, respectively. The Hardy-Weinberg equilibrium (HWE) was assessed using the one tailed chi-square test. Multivariate logistic regression models were performed to test the association between the SNP and liver histology features. Due to the relatively low frequency of the minor allele, the impact of rs495392 on histological damage was modelled under a dominant inheritance model. The SNP-SNP interactions were analyzed by generalized multifactor dimensionality reduction (GMDR). A *post-hoc* power analysis for the logistic regression models were undertaken to assess the statistical power in present study. A sample size (N) of 531 achieves 73.4% of power (1- $\beta$ ) for *KL* rs495392 variant and hepatic steatosis analysis. A *P*-value <0.05 was considered to be statistically significant.

### The replication cohort from the Rotterdam Study (RS)

The RS was used as replication cohort. The RS is a prospective cohort study of individuals aged  $\geq 40$  years living in the Ommoord district of Rotterdam, the Netherlands. The objectives, design and methods of the RS have been described in detail elsewhere.<sup>28</sup> In 1990, the first cohort of study (RS-I) comprised 7,983 persons aged  $\geq 55$  years. In 2000, the second cohort (RS-II) was extended to include an additional 3,011 participants who moved into the study district or had become 55 years of age. A further extension of the cohort (RS-III) formed in 2006 and include 3,932 participants living in the research area and aged  $\geq 45$  years. In 2016, the recruitment of another extension (RS-IV) started that targeted participants aged  $\geq 40$  years. All participants in the study provided written informed consent to participate and to obtain information from their treating physicians.

Genotyping was performed using Human Core-24 BeadChip Marker information, and the quality control procedures were applied to the genotype data. Data were imputed using the second release of the Haplotype Reference Consortium (realizes 1.1 2016) by mean Michigan Imputation Server. We extracted genotype dosage for rs495392 with a high imputation quality (Rsq score=0.98).

For the current study, 4,307 participants from the RS-I, RS-II, and RS-III sub-cohorts who had information on the *KL* rs495392 polymorphism and fatty liver index (FLI) were included. Then, the participants with excessive alcohol consumption, medicine use that cause steatosis, other viral hepatitis or data missing were excluded, leaving 3,830 participants included as the main

**Table 1.** Baseline characteristics of 531 Chinese patients with biopsy-confirmed NAFLD according to Klotho (*KL*) rs495392 C>A genotype

	CC (n=366)	CA+AA (n=165)	P-value
Clinical parameter			
Age (years)	41.0±12.4	44.2±13.3	0.007
Male sex	268 (73.2)	113 (68.5)	0.262
Diabetes	121 (33.1)	59 (35.8)	0.543
Hypertension	145 (39.6)	72 (43.6)	0.383
BMI (kg/m <sup>2</sup> )	26.8±3.5	26.7±3.2	0.603
Laboratory parameter			
Hemoglobin A1c (%)	6.2±1.4	6.3±1.5	0.427
HOMA-IR score	5.94±10.56	5.71±8.03	0.801
Insulin resistance	254 (69.59)	110 (67.07)	0.563
Platelet count (10 <sup>9</sup> /L)	251±64	244±58	0.207
Albumin (g/dL)	4.62±0.37	4.57±0.38	0.141
AST (U/L)	57 (31–96)	48 (28–73)	0.030
ALT (U/L)	36 (25–56)	31 (25–49)	0.079
ALP (U/L)	88±38	86±32	0.509
GGT (U/L)	51 (32–82)	51 (29–85)	0.862
Creatinine (μmol/L)	67.7±14.7	66.0±13.3	0.197
Uric acid (μmol/L)	395.9±109.4	383.0±98.8	0.198
TC (mmol/L)	5.11±1.13	5.13±1.25	0.845
TG (mmol/L)	2.36±2.03	2.32±1.79	0.826
HDL-C (mmol/L)	1.00±0.22	1.05±0.26	0.021
LDL-C (mmol/L)	3.07±0.88	3.00±0.97	0.425
25(OH)D (nmol/L)	58.0±19.1	63.5±19.8	0.032
Liver histology feature			
Steatosis score	1.82±1.03	1.59±1.07	0.021
Hepatocyte ballooning score	1.21±0.64	1.15±0.60	0.320
Lobular inflammation score	1.20±0.52	1.14±0.52	0.241
Fibrosis score	1.03±0.84	1.03±0.93	0.998
NAS score	4.23±1.52	3.88±1.49	0.016
Severe steatosis (≥2)	213 (58.2)	76 (46.1)	0.009
Severe ballooning (=2)	122 (33.3)	44 (26.7)	0.125
Severe inflammation (≥2)	81 (22.1)	31 (18.8)	0.382
Significant fibrosis (≥2)	84 (23.0)	43 (26.1)	0.437

Values are presented as mean±standard deviation for those with a normal distribution, medians (p25–p75) for those with a non-normal distribution, or number (%).

NAFLD, non-alcoholic fatty liver disease; BMI, body mass index; HOMA-IR, homeostasis model assessment-insulin resistance; AST, aspartate aminotransferase; ALT, alanine aminotransferase; ALP, alkaline phosphatase; GGT, γ-glutamyl transpeptidase; TC, total cholesterol; TG, triglycerides; HDL-C, high-density lipoprotein cholesterol; LDL-C, low density lipoprotein cholesterol; 25(OH)D, 25-hydroxyvitamin D; NAS, NAFLD Activity Score.

population for analysis (Supplementary Fig. 1). The definitions of NAFLD and fibrosis for the participants were based on FLI and liver stiffness measurement (LSM), respectively. According to the previous studies, a FLI  $\geq 60$  was considered as hepatic steatosis,<sup>29</sup> while a LSM  $>6.9$  kPa was considered as significant fibrosis.<sup>30</sup>

## Ethics

Ethical approval for the PERSONS project was obtained from the Ethics Committee of the First Affiliated Hospital of Wenzhou Medical University (2016-246, 1 December 2016). All procedures

performed in studies involving human participants were in accordance with the ethical standards of the institutional research committee and with the 1964 Helsinki declaration and its later amendments.

The RS has been approved by the Medical Ethics Committee of the Erasmus MC (registration number MEC 02.1015) and by the Dutch Ministry of Health, Welfare and Sport (Population Screening Act WBO, license number 1071272-159521-PG).

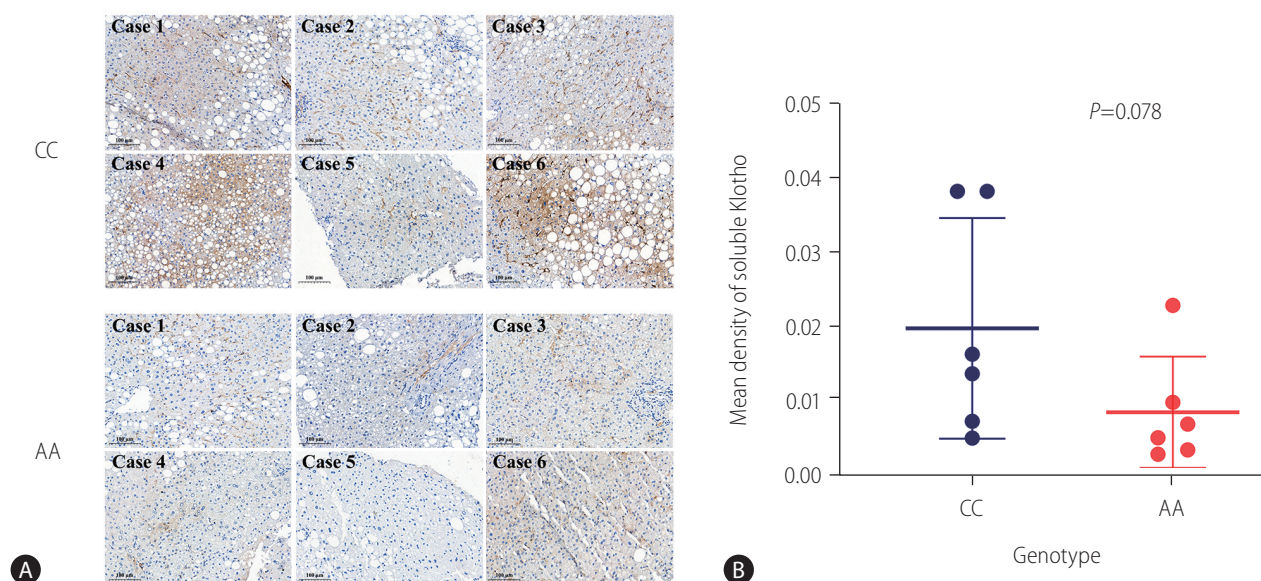
Written informed consent was obtained from all participants included in the study.

**Table 2.** Association between Klotho (KL) rs495392 polymorphism and liver histology features in patients with NAFLD

	Severe steatosis		Severe ballooning		Severe inflammation		Significant fibrosis		
	OR (95% CI)	P-value	OR (95% CI)	P-value	OR (95% CI)	P-value	OR (95% CI)	P-value	
Crude model									
CC	Ref.	-	Ref.	-	Ref.	-	Ref.	-	
CA+AA	0.61 (0.42–0.89)	0.010	0.73 (0.48–1.09)	0.126	0.81 (0.51–1.29)	0.383	1.18 (0.77–1.81)	0.437	
Adjusted model*									
CC	Ref.	-	Ref.	-	Ref.	-	Ref.	-	
CA+AA	0.66 (0.45–0.98)	0.040	0.75 (0.50–1.13)	0.171	0.85 (0.53–1.36)	0.493	1.17 (0.75–1.81)	0.493	

NAFLD, non-alcoholic fatty liver disease; OR, odds ratio; CI, confidence interval; Ref., reference.

\*Adjusted for age, sex, body mass index, presence of diabetes.



**Figure 1.** The expression of soluble Klotho (sKL) in liver samples according to the Klotho (KL) rs495392 gene polymorphism. (A) It showed the expression of sKL in liver samples with genotype CC and genotype AA using immunohistochemistry staining ( $\times 22.5$ ). (B) It presented the semiquantitative analysis result of Klotho expression in liver samples. The liver samples with genotype AA showed a non, but borderline, significant lower level of sKL compared with the genotype CC ( $P=0.078$ ).

## RESULTS

### Genotype distribution

A total of 531 genotyped patients (from the PERSONS project) were included in this study. The frequency distribution of *KL* rs495392 was in HWE ( $P>0.05$ ). The minor allele frequency for *KL* rs495392 was 0.168 in our Chinese cohort, similar to that (0.188) reported for the general East Asian population of the 1000 genomes project.<sup>31</sup> The genotype distribution of rs495392 CC, CA, and AA was 68.9%, 28.6%, and 2.4%, respectively.

### Patient characteristics

The characteristics of patients with biopsy-confirmed NAFLD stratified by carriage of *KL* rs495392 A allele are depicted in Table 1. The comparison of the characteristics according to the rs495392 genotypes showed that the group with genotype CA+AA had older average age, lower serum level of aspartate aminotransferase, and higher serum levels of high-density lipoprotein cholesterol (HDL-C) than the group with CC genotype (all,  $P<0.05$ ).

### Impact of *KL* rs495392 polymorphism on the liver histology features

The impact of carriage of *KL* rs495392 A allele on the liver histology features is presented in Table 1. The carriers of the A allele (CA+AA) had significantly lower hepatic steatosis score, NAS and prevalence of severe steatosis, compared to the C allele carriers (all,  $P<0.05$ ).

To further estimate the effects of rs495392 on histological damage, logistic regression models were performed in Table 2. In crude analysis, carriage of the A allele was related to a lower risk of severe hepatic steatosis with an odds ratio (OR) of 0.61 (CA+AA vs. CC, 95% confidence interval [CI], 0.42–0.89;  $P=0.010$ ). After adjusting for age, sex, BMI, and presence of diabetes, the A allele still showed a protective effect against severe steatosis with an OR of 0.66 (CA+AA vs. CC; 95% CI, 0.45–0.98;  $P=0.040$ ). However, there was no significant association between rs495392 and hepatocyte ballooning, lobular inflammation, and fibrosis.

### Hepatic sKL protein expression

To determine whether *KL* protein is expressed differentially in liver according to the genotypes, 12 homozygous liver samples

**Table 3.** Replication of the impact of the Klotho (*KL*) rs495392 variant and the severity of steatosis in participants from the Rotterdam Study

	60 ≤ FLI < 78*		FLI ≥ 78†	
	OR (95% CI)	P-value	OR (95% CI)	P-value
All (n=3,830)				
CC	Ref.	-	Ref.	-
CA	0.95 (0.75–1.21)	0.700	0.81 (0.57–1.15)	0.240
AA	0.82 (0.53–1.25)	0.364	0.36 (0.17–0.73)	0.006
LSM ≤ 6.9 kPa (n=2,428)				
CC	Ref.	-	Ref.	-
CA	0.90 (0.66–1.21)	0.479	0.71 (0.43–1.17)	0.182
AA	0.83 (0.50–1.36)	0.467	0.17 (0.05–0.49)	0.002
LSM > 6.9 kPa (n=370)				
CC	Ref.	-	Ref.	-
CA	1.26 (0.57–2.82)	0.565	1.84 (0.71–4.93)	0.210
AA	0.77 (0.11–4.29)	0.781	1.13 (0.11–8.76)	0.910

FLI, fatty liver index; OR, odds ratio; CI, confidence interval; Ref., reference; LSM, liver stiffness measurement.

\*60 ≤ FLI < 78 non-alcoholic fatty liver disease (NAFLD) vs. non-NAFLD participants, adjusted for age, sex, cohort, body mass index (BMI), hypertension and type 2 diabetes.

†FLI ≥ 78 NAFLD vs. non-NAFLD participants, adjusted for age, sex, cohort, BMI, hypertension, and type 2 diabetes.



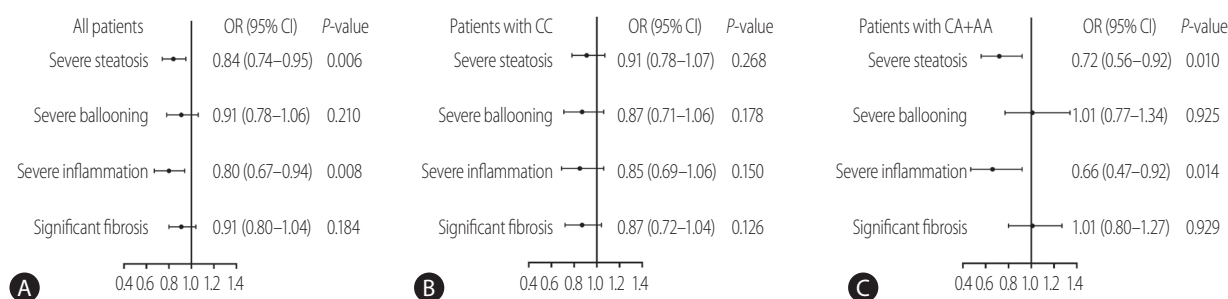
underwent IHC staining (six from the genotype CC patients and six from the genotype AA patients with matched age, sex and presence of diabetes). According to the instructions of KL antibody, only soluble form of the protein can be detected. As shown in Figure 1A, a reduced expression of sKL seemed to present in the genotype AA group compared with the CC group. After quantifying sKL expression, we found that the liver samples from the genotype AA showed a non, but borderline, significant lower level of sKL (Fig. 1B;  $P=0.078$ ). Considering the limited sample size and

low statistical power, it is possible that the *KL* rs495392 polymorphism may downregulate the sKL expression.

### Replication of the impact of *KL* rs495392 polymorphism on hepatic steatosis in the RS

To validate the effect of *KL* rs495392 polymorphism in an external cohort, we obtained data from the prospective, population-based RS cohort. The characteristics of participants from the RS are shown

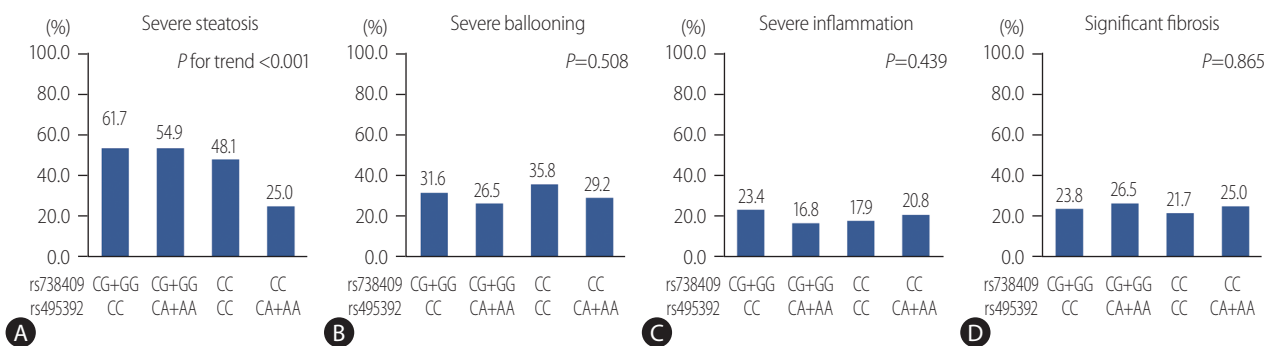
25(OH)D per 10 nmol/L increase in:



**Figure 2.** Association analysis between serum vitamin D level and liver histology features according to the Klotho (*KL*) rs495392 gene polymorphism. The serum 25(OH)D level is negatively associated with severity of steatosis and lobular inflammation in patients with NAFLD (A). After stratified into rs495392 CC and CA+AA groups, only patients with genotypes CA or AA show significant associations with liver histology features (C), while no association is observed in genotype CC (B). 25(OH)D, 25-hydroxyvitamin D; OR, odds ratio; CI, confidence interval; NAFLD, non-alcoholic fatty liver disease.

**Table 4.** Best models to predict severe steatosis by generalized multifactor dimensionality reduction

	Training accuracy (%)	Testing accuracy (%)	Sign test (P-value)	Cross-validation consistency
rs738409	57.8	57.9	10 (0.0010)	10/10
rs495392	55.1	55.2	10 (0.0010)	10/10
rs495392 × rs738409	59.1	59.1	10 (0.0010)	10/10



**Figure 3.** The liver histology features according to PNPLA3 rs738409 and Klotho (*KL*) rs495392 genotypes in patients with NAFLD. The prevalence of severe steatosis stepwise decreased according to the comprehensive effects of rs738409 and rs495392 polymorphisms ( $P$  for trend  $<0.001$ ) (A). No significant difference is observed in severe ballooning, severe inflammation and significant fibrosis (B–D). PNPLA3, patatin-like phospholipase domain containing 3; NAFLD, non-alcoholic fatty liver disease.

in Supplementary Table 1. As shown in Supplementary Figure 1, a total of 1,143 NAFLD and 2,687 non-NAFLD participants of the European ancestry were included. The median value of FLI was 78 in the NAFLD participants. As demonstrated in Table 3, the genotype AA was negatively associated with higher FLI (OR, 0.36; 95% CI, 0.17–0.73;  $P=0.006$ ), indicating a protective effect of the A allele against having higher FLI score. After stratifying by severity of liver fibrosis, the protective effect of A allele was only observed in participants with less fibrosis (OR, 0.17; 95% CI, 0.05–0.49;  $P=0.002$ ). In addition, the *KL* rs495392 A allele was also associated with a reduced risk of type 2 diabetes in this Caucasian cohort (Supplementary Table 1).

### The role of vitamin D in NAFLD under the *KL* rs495392 polymorphism

To investigate whether *KL* rs495392 polymorphism influences the association of vitamin D with NAFLD, the serum levels of 25(OH)D were measured according to the rs495392 genotype in our Chinese patient cohort. As shown in Table 1, the patients carrying the A allele (CA+AA) had significant higher serum levels of 25(OH)D, compared to the patients with the CC genotype ( $58.0 \pm 19.1$  vs.  $63.5 \pm 19.8$  nmol/L,  $P=0.032$ , respectively). Furthermore, patients were classified into three groups according to the serum 25(OH)D levels (deficiency [ $<50$  nmol/L] vs. insufficiency [ $50–75$  nmol/L] vs. sufficiency [ $\geq 75$  nmol/L]). The prevalence of severe steatosis and severe inflammation was stepwise decreased from deficient to sufficient status of vitamin D (all  $P<0.05$ ;  $P$  for trend  $<0.05$ ) (Supplementary Fig. 2). Our results suggested that a serum level of 25(OH)D could be negatively associated with the severity of NAFLD. After stratification for the rs495392 genotypes, the association between serum level of 25(OH)D and liver damage was only evident in patients who were carrying the A al-

lele, CA or AA genotype (OR, 0.72; 95% CI, 0.56–0.92;  $P=0.010$  for severe steatosis and OR, 0.66; 95% CI, 0.47–0.92;  $P=0.014$  for severe inflammation) (Fig. 2).

### Interaction between *PNPLA3* rs738409 and *KL* rs495392 polymorphisms

The *PNPLA3* rs738409 polymorphism is known as a main genetic determinant of fatty liver disease.<sup>5</sup> Therefore, we next explored the interaction between *PNPLA3* rs738409 and *KL* rs495392 variants on the liver damage. The results of the GMDR model analysis of the SNP-SNP interactions are showed in Table 4. The best model for predicting severe steatosis was the two-locus model, a combination of *PNPLA3* rs738409 and *KL* rs495392, with the highest testing accuracy (TA) and perfect cross-validation consistency (CVC) (TA, 59.1%;  $P=0.001$ ; CVC, 10/10). The prevalence of severe steatosis according to the rs738409/rs495392 genotypes were 61.7% for CG+GG/CC, 54.9% for CG+GG/CA+AA, 48.1% for CC/CC, 25.0% for CC/CA+AA ( $P$  for trend  $<0.001$ ) (Fig. 3). The prevalence of severe steatosis stepwise changed according to the comprehensive effects of rs738409 and rs495392 polymorphism. To further investigate these interactions, logistic regression models were used according to rs738409 and rs495392 genotypes (Table 5). Using patients with wildtype genotype as reference, patients with the rs495392 A allele had a lower risk of severe steatosis with an OR of 0.38 (95% CI, 0.17–0.84;  $P=0.016$ ), while patients with rs738409 G allele had an increased risk of severe steatosis with an OR of 1.68 (95% CI, 1.04–2.72;  $P=0.035$ ). Patients with both alleles of rs495392 A allele and rs738409 G allele showed no significant difference compared with the wildtype alleles (OR, 1.39; 95% CI, 0.79–2.44;  $P=0.249$ ). Thus, it might be possible that the *KL* rs495392 A allele attenuates the detrimental impact of the *PNPLA3* rs738409 G

**Table 5.** Logistic regression analysis for interaction of *PNPLA3* rs738409 and Klotho (*KL*) rs495392 gene polymorphisms in histology features of NAFLD

Genotype	Severe steatosis		Severe ballooning		Severe inflammation		Significant fibrosis	
	OR (95% CI)	P-value	OR (95% CI)	P-value	OR (95% CI)	P-value	OR (95% CI)	P-value
rs738409/rs495392								
CC/CC	Ref.	-	Ref.	-	Ref.	-	Ref.	-
CC/CA+AA	0.38 (0.17–0.84)	0.016	0.76 (0.36–1.60)	0.477	1.34 (0.56–3.24)	0.514	1.24 (0.55–2.82)	0.607
CG+GG/CC	1.68 (1.04–2.72)	0.035	0.82 (0.50–1.32)	0.402	1.42 (0.79–2.57)	0.241	1.20 (0.69–2.09)	0.524
CG+GG/CA+AA	1.39 (0.79–2.44)	0.249	0.65 (0.37–1.16)	0.148	0.96 (0.47–1.95)	0.902	1.35 (0.71–2.56)	0.357

Adjusted for age, sex, body mass index, presence of diabetes.

*PNPLA3*, patatin-like phospholipase domain containing 3; NAFLD, non-alcoholic fatty liver disease; OR, odds ratio; CI, confidence interval; Ref., reference.

variant on hepatic fat accumulation in patients with NAFLD. However, no interactions between rs738409 and rs495392 were observed on other histology features of NAFLD (Table 5).

## DISCUSSION

In this study, we examined the impact of a polymorphism at the *KL* locus, namely the rs495392 C>A intronic variant previously associated with cardiometabolic traits,<sup>15,16</sup> on liver damage in a cohort of Chinese patients with biopsy-confirmed NAFLD and an external European population-based cohort, the RS. Our results suggest that the rs495392 A allele has a protective impact on the severity of hepatic steatosis. In further analysis, rs495392 variant modulated the association of vitamin D with hepatic steatosis and lobular inflammation in NAFLD. Furthermore, we also found that the rs495392 A allele may attenuate the detrimental impact of *PNPLA3* rs738409 G allele, one of the main genetic determinants of fatty liver disease,<sup>4</sup> on the risk of severe steatosis.

Recent studies have identified a role of *Klotho*, known as an antiaging gene, in energy metabolism<sup>6,32,33</sup> and observed a therapeutic potential in cell and animal models with metabolic disorders.<sup>34,35</sup> *In vitro* studies, *Klotho* has been detected in adipogenic cell and identified as an adipogenesis promoting factor, which promote adipocyte differentiation.<sup>36</sup> In parallel with the findings, the *Klotho*-knockout mice experienced extreme leanness. Even in leptin-deficient mice, eliminating *Klotho* function resulted in significant reduction of hepatic fat accumulation and the whole body weight.<sup>9</sup> Inhibition of *Klotho* expression presented inspiring benefit in improving lipid accumulation and obesity. However, the physiological effects of *Klotho* in metabolism are complicated and controversial. Gu et al.<sup>37</sup> observed that the increased serum lipid profiles and hepatic lipid content in sKL deficient type 2 diabetes mice. Nevertheless, the overexpression of sKL reversed these phenomena.<sup>37</sup> Rao et al.<sup>35</sup> found administration of *Klotho* resulted in decreased fat mass, increased lean mass and reduced lipid accumulation in liver of obese mice. In addition to hepatic lipid accumulation, IR also plays a crucial role in fatty liver disease.<sup>38,39</sup> Interestingly, *Klotho* overexpressing mice experience IR but without hyperglycemia and obesity. Mice with deficient *Klotho* gene expression showed increased insulin sensitivity, and experienced many aging-associated disease phenotypes.<sup>40,41</sup> Despite the prominent roles of *Klotho* in peripheral metabolism, studies demonstrated a central function of *Klotho* in cerebrospinal fluid (CSF). The CSF *Klotho* regulates energy balance and intracerebroventric-

ular administration of *Klotho* suppressed food intake, improved glucose profiles, and reduced body weight in mice.<sup>42,43</sup> The molecular mechanisms of *Klotho* have not been fully elucidated so far, while peroxisome proliferator-activated receptor (PPAR) family highly involves in *Klotho* gene expression. PPAR family is recognized as an important regulator of energy metabolism over the past decades.<sup>44</sup> The *Klotho* gene contains a non-canonical PPAR-response element in its 5'-flanking region, and the binding of PPAR- $\gamma$  to this element induces *Klotho* gene expression.<sup>45</sup> Moreover, PPAR- $\alpha$  was also reported to mediate the regulation of sKL on hepatic lipid metabolism in mice.<sup>37</sup>

Genetic polymorphisms of *Klotho* gene were associated with various pathophysiological processes and diseases.<sup>10-13</sup> In our Chinese cohort, carriage of the *KL* rs495392 A allele was related to a lower risk of severe steatosis in patients with NAFLD, without affecting body mass nor IR. In replication cohort, the RS from the Netherlands, we observed that rs495392 A allele was not only associated with lower FLI, but also a reduced risk of type 2 diabetes (Supplementary Table 1), indicating the different effects of the variant between Chinese and European populations. Rs495392 locates in an intronic region of the *KL* gene. Notably, intronic variants have been reported to affect gene expression and play a role in, for example, alternative splicing of the mRNA.<sup>46</sup> For instance, another intronic variant in *KL* rs650439 was suggested to be associated with plasma *Klotho* concentration.<sup>47</sup> In addition, previous large eQTL meta-analysis in whole blood suggested the SNP rs495392 as cis-eQTL signal for the expression of *KL* gene.<sup>17</sup> Although the present study does not have the information on serum *Klotho* concentrations, the expression of sKL in liver tissues was examined. The protection of *KL* rs495392 variant against hepatic steatosis seemed to be related to a downregulation of sKL expression. Nevertheless, the statistical power of the results is low and further investigation is required.

Moreover, we conducted the analysis of interaction between *PNPLA3* rs738409 and *KL* rs495392 variants. *PNPLA3* is a 481-residue protein and mainly expressed in the liver. It has lipase activity towards triglycerides in hepatocytes and retinyl esters in hepatic stellate cells. The *PNPLA3* gene is associated with hepatic steatosis and regarded as the main genetic factor for fatty liver disease.<sup>4</sup> In this work, we noted that *KL* rs495392 A allele may attenuate the risk effect of *PNPLA3* rs738409 G allele on hepatic steatosis. Based on current data, the underlying mechanism of the interaction between rs495392 and rs738409 remains unclear, and therefore further experimental studies are needed.

The interactions between *Klotho* and Vitamin D are complicat-

ed. Briefly, Klotho-FGF23 axis can suppress synthesis of 1,25-dihydroxyvitamin D [1,25(OH)<sub>2</sub>D] from 25(OH)D, while 1,25(OH)<sub>2</sub>D positively regulates *KL* gene expression.<sup>48</sup> A recent study has reviewed the efficacy of serum vitamin D and its supplementation in fatty liver disease and suggested inconclusive conclusions.<sup>19</sup> Four cross-sectional studies from Italian, Chinese, and Korean showed the significant relationships between vitamin D and severity of fatty liver disease.<sup>49-52</sup> However, two meta-analyses concluded that there was no association between vitamin D level and fatty liver disease.<sup>53,54</sup> In terms of vitamin D supplementation, animal and cell experiments showed benefits in improving NAFLD-like symptoms, whereas most of the clinical trials failed in treatment of patients with fatty liver disease.<sup>55</sup> In our cohort, the *KL* rs495392 variant increased serum vitamin D expression. Impaired vitamin D status was associated with advanced hepatic steatosis and lobular inflammation and these effects were inconsistent according to the *KL* rs495392 genotypes. Hence, the inclusive conclusions of vitamin D in fatty liver disease may be partly attributed to the differential impact of vitamin D status in patients with different genetic background.

The strengths of our study are large sample size, two different population cohorts. Replication in external cohort from different ancestries allowed us to improve the robustness of the findings. However, our study has some limitations. The present work lacks information of serum sKL concentration. Although the IHC staining of liver tissues underwent, the sample size was limited and only non-significant trend was observed. Furthermore, the replication cohort from the RS lacks histology data and the methodology used for assessing NAFLD is not the same as the cohort from China. However, it would be too difficult to use liver biopsy as a diagnostic method for participants of epidemiological studies, and at the population level. Moreover, the form of vitamin D measured in this study is 25(OH)D rather than 1,25(OH)<sub>2</sub>D. The inactive form of vitamin D is more stable in circulation, but indirectly represents the active form of vitamin D.

In conclusion, this study indicates that the *KL* rs495392 polymorphism had a protective effect against severe hepatic steatosis in patients with NAFLD. These data suggest that Klotho may represent a therapeutic target for the fatty liver disease that warrant further investigation.

### Authors' contribution

Conceptualization: Wen-Yue Liu, Mohsen Ghanbari and Ming-Hua Zheng. Data curation: Gang Li, Liang-Jie Tang, Pei-Wu Zhu, Rafael S. Rios, Kenneth I. Zheng, Hong-Lei Ma, Robert J. de Knegt

and Mohsen Ghanbari. Methodology: Xiao-Dong Wang. Writing – original draft: Wen-Yue Liu and Xiaofang Zhang. Writing – review & editing: Xiaofang Zhang, Qiuwei Pan, Robert J. de Knegt, Luca Valenti, Mohsen Ghanbari and Ming-Hua Zheng. Formal analysis: Wen-Yue Liu and Xiaofang Zhang. Supervision: Mohsen Ghanbari, Qiuwei Pan and Ming-Hua Zheng.

### Acknowledgements

The Chinese cohort was supported by grants from the National Natural Science Foundation of China (82070588), High Level Creative Talents from Department of Public Health in Zhejiang Province (S2032102600032) and Project of New Century 551 Talent Nurturing in Wenzhou.

The Rotterdam Study is funded by Erasmus Medical Center and Erasmus University, Rotterdam, Netherlands Organization for the Health Research and Development (ZonMw), the Research Institute for Diseases in the Elderly (RIDE), the Ministry of Education, Culture and Science, the Ministry for Health, Welfare and Sports, the European Commission (DG XII), and the Municipality of Rotterdam.

All authors are grateful to the Rotterdam Study participants, the staff involved with the Rotterdam Study, and the participating general practitioners and pharmacists.

### Conflicts of Interest

The authors have no conflicts to disclose.

### SUPPLEMENTARY MATERIAL

Supplementary material is available at Clinical and Molecular Hepatology website (<http://www.e-cmh.org>).

### REFERENCES

1. Brunt EM, Wong VW, Nobili V, Day CP, Sookoian S, Maher JJ, et al. Nonalcoholic fatty liver disease. *Nat Rev Dis Primers* 2015;1:15080.
2. Masuoka HC, Chalasani N. Nonalcoholic fatty liver disease: an emerging threat to obese and diabetic individuals. *Ann N Y Acad Sci* 2013;1281:106-122.
3. Younossi Z, Anstee QM, Marietti M, Hardy T, Henry L, Eslam M, et al. Global burden of NAFLD and NASH: trends, predictions, risk factors and prevention. *Nat Rev Gastroenterol Hepatol* 2018;15:11-20.
4. Trépo E, Valenti L. Update on NAFLD genetics: from new variants to

- the clinic. *J Hepatol* 2020;72:1196-1209.
5. Romeo S, Kozlitina J, Xing C, Pertsemlidis A, Cox D, Pennacchio LA, et al. Genetic variation in PNPLA3 confers susceptibility to nonalcoholic fatty liver disease. *Nat Genet* 2008;40:1461-1465.
  6. Razzaque MS. The role of klotho in energy metabolism. *Nat Rev Endocrinol* 2012;8:579-587.
  7. Martin A, David V, Quarles LD. Regulation and function of the FGF23/klotho endocrine pathways. *Physiol Rev* 2012;92:131-155.
  8. Matsumura Y, Aizawa H, Shiraki-Iida T, Nagai R, Kuro-o M, Nabeshima Y. Identification of the human klotho gene and its two transcripts encoding membrane and secreted klotho protein. *Biochem Biophys Res Commun* 1998;242:626-630.
  9. Ohnishi M, Kato S, Akiyoshi J, Atfi A, Razzaque MS. Dietary and genetic evidence for enhancing glucose metabolism and reducing obesity by inhibiting klotho functions. *FASEB J* 2011;25:2031-2039.
  10. Kawano K, Ogata N, Chiano M, Molloy H, Kleyn P, Spector TD, et al. Klotho gene polymorphisms associated with bone density of aged postmenopausal women. *J Bone Miner Res* 2002;17:1744-1751.
  11. Luo L, Hao Q, Dong B, Yang M. The klotho gene G-395A polymorphism and metabolic syndrome in very elderly people. *BMC Geriatr* 2016;16:46.
  12. Cambray S, Bermudez-Lopez M, Bozic M, Valdivielso JM; NEFRONA investigators. Association of a single nucleotide polymorphism combination pattern of the klotho gene with non-cardiovascular death in patients with chronic kidney disease. *Clin Kidney J* 2020;13:1017-1024.
  13. Kim Y, Kim JH, Nam YJ, Kong M, Kim YJ, Yu KH, et al. Klotho is a genetic risk factor for ischemic stroke caused by cardioembolism in Korean females. *Neurosci Lett* 2006;407:189-194.
  14. Imamura A, Okumura K, Ogawa Y, Murakami R, Torigoe M, Numaguchi Y, et al. Klotho gene polymorphism may be a genetic risk factor for atherosclerotic coronary artery disease but not for vasospastic angina in Japanese. *Clin Chim Acta* 2006;371:66-70.
  15. Solache-Berrocal G, Rolle-Sóñora V, Martín-Fernández N, Cambray S, Valdivielso JM, Rodríguez I. CYP24 A1 and KL polymorphisms are associated with the extent of vascular calcification but do not improve prediction of cardiovascular events. *Nephrol Dial Transplant* 2021;36:2076-2083.
  16. Valdivielso JM, Bozic M, Galimudi RK, Bermudez-López M, Navarro-González JF, Fernández E, et al. Association of the rs495392 klotho polymorphism with atheromatosis progression in patients with chronic kidney disease. *Nephrol Dial Transplant* 2019;34:2079-2088.
  17. Westra HJ, Peters MJ, Esko T, Yaghootkar H, Schurmann C, Kettunen J, et al. Systematic identification of trans eQTLs as putative drivers of known disease associations. *Nat Genet* 2013;45:1238-1243.
  18. Pacifico L, Osborn JF, Bonci E, Pierimarchi P, Chiesa C. Association between vitamin D levels and nonalcoholic fatty liver disease: potential confounding variables. *Mini Rev Med Chem* 2019;19:310-332.
  19. Zhang Z, Thorne JL, Moore JB. Vitamin D and nonalcoholic fatty liver disease. *Curr Opin Clin Nutr Metab Care* 2019;22:449-458.
  20. Li R, Guo E, Yang J, Li A, Yang Y, Liu S, et al. 1,25(OH)2D3 attenuates hepatic steatosis by inducing autophagy in mice. *Obesity (Silver Spring)* 2017;25:561-571.
  21. Lee I, Park E, Cho J. Association of nonalcoholic fatty liver disease with serum vitamin D levels in combination of physical fitness in Korean older adults. *J Steroid Biochem Mol Biol* 2020;198:105569.
  22. Forster RE, Jurutka PW, Hsieh JC, Haussler CA, Lowmiller CL, Kaneko I, et al. Vitamin D receptor controls expression of the anti-aging klotho gene in mouse and human renal cells. *Biochem Biophys Res Commun* 2011;414:557-562.
  23. Liu WY, Zheng KI, Pan XY, Ma HL, Zhu PW, Wu XX, et al. Effect of PNPLA3 polymorphism on diagnostic performance of various non-invasive markers for diagnosing and staging nonalcoholic fatty liver disease. *J Gastroenterol Hepatol* 2020;35:1057-1064.
  24. Matthews DR, Hosker JP, Rudenski AS, Naylor BA, Treacher DF, Turner RC. Homeostasis model assessment: insulin resistance and beta-cell function from fasting plasma glucose and insulin concentrations in man. *Diabetologia* 1985;28:412-419.
  25. Sumner AE, Cowie CC. Ethnic differences in the ability of triglyceride levels to identify insulin resistance. *Atherosclerosis* 2008;196:696-703.
  26. American Diabetes Association. 1. Improving care and promoting health in populations: standards of medical care in diabetes-2020. *Diabetes Care* 2020;43(Suppl 1):S7-S13.
  27. Kleiner DE, Brunt EM, Van Natta M, Behling C, Contos MJ, Cummings OW, et al. Design and validation of a histological scoring system for nonalcoholic fatty liver disease. *Hepatology* 2005;41:1313-1321.
  28. Ikram MA, Brusselle G, Ghanbari M, Goedegebure A, Ikram MK, Kavousi M, et al. Objectives, design and main findings until 2020 from the Rotterdam study. *Eur J Epidemiol* 2020;35:483-517.
  29. Bedogni G, Bellentani S, Miglioli L, Masutti F, Passalacqua M, Castiglione A, et al. The fatty liver index: a simple and accurate predictor of hepatic steatosis in the general population. *BMC Gastroenterol* 2006;6:33.
  30. Petta S, Maida M, Macaluso FS, Di Marco V, Cammà C, Cabibi D, et al. The severity of steatosis influences liver stiffness measurement in patients with nonalcoholic fatty liver disease. *Hepatology* 2015;62:1101-1110.
  31. 1000 Genomes Project Consortium; Auton A, Brooks LD, Durbin RM, Garrison EP, Kang HM, et al. A global reference for human genetic variation. *Nature* 2015;526:68-74.
  32. Nie F, Wu D, Du H, Yang X, Yang M, Pang X, et al. Serum klotho protein levels and their correlations with the progression of type 2 diabetes mellitus. *J Diabetes Complications* 2017;31:594-598.

33. Amitani M, Asakawa A, Amitani H, Kaimoto K, Sameshima N, Koyama KI, et al. Plasma klotho levels decrease in both anorexia nervosa and obesity. *Nutrition* 2013;29:1106-1109.
34. Lin Y, Sun Z. Antiaging gene klotho attenuates pancreatic  $\beta$ -cell apoptosis in type 1 diabetes. *Diabetes* 2015;64:4298-4311.
35. Rao Z, Landry T, Li P, Bunner W, Laing BT, Yuan Y, et al. Administration of alpha klotho reduces liver and adipose lipid accumulation in obese mice. *Heliyon* 2019;5:e01494.
36. Chihara Y, Rakugi H, Ishikawa K, Ikushima M, Maekawa Y, Ohta J, et al. Klotho protein promotes adipocyte differentiation. *Endocrinology* 2006;147:3835-3842.
37. Gu H, Jiang W, You N, Huang X, Li Y, Peng X, et al. Soluble klotho improves hepatic glucose and lipid homeostasis in type 2 diabetes. *Mol Ther Methods Clin Dev* 2020;18:811-823.
38. Watt MJ, Miotto PM, De Nardo W, Montgomery MK. The liver as an endocrine organ-linking NAFLD and insulin resistance. *Endocr Rev* 2019;40:1367-1393.
39. Rao UK, Engelhardt BG. Predicting immuno-metabolic complications after allogeneic hematopoietic cell transplant with the cytokine interleukin-33 (IL-33) and its receptor serum-stimulation 2 (ST2). *Clin Hematol Int* 2020;2:101-108.
40. Kurosu H, Yamamoto M, Clark JD, Pastor JV, Nandi A, Gurnani P, et al. Suppression of aging in mice by the hormone klotho. *Science* 2005;309:1829-1833.
41. Kuro-o M, Matsumura Y, Aizawa H, Kawaguchi H, Suga T, Utsugi T, et al. Mutation of the mouse klotho gene leads to a syndrome resembling ageing. *Nature* 1997;390:45-51.
42. Landry T, Laing BT, Li P, Bunner W, Rao Z, Prete A, et al. Central  $\alpha$ -klotho suppresses NPY/AgRP neuron activity and regulates metabolism in mice. *Diabetes* 2020;69:1368-1381.
43. Landry T, Li P, Shookster D, Jiang Z, Li H, Laing BT, et al. Centrally circulating  $\alpha$ -klotho inversely correlates with human obesity and modulates arcuate cell populations in mice. *Mol Metab* 2021;44:101136.
44. Yamashita D, Shimizu M, Osumi T. Mechanism for the action of PPARs. *Nihon Rinsho* 2005;63:536-537.
45. Kuro-O M. The Klotho proteins in health and disease. *Nat Rev Nephrol* 2019;15:27-44.
46. Rearick D, Prakash A, McSweeney A, Shepard SS, Fedorova L, Fedorov A. Critical association of ncRNA with introns. *Nucleic Acids Res* 2011;39:2357-2366.
47. Yokoyama S, Oguro R, Yamamoto K, Akasaka H, Ito N, Kawai T, et al. A klotho gene single nucleotide polymorphism is associated with the onset of stroke and plasma klotho concentration. *Aging (Albany NY)* 2018;11:104-114.
48. Tomiyama K, Maeda R, Urakawa I, Yamazaki Y, Tanaka T, Ito S, et al. Relevant use of klotho in FGF19 subfamily signaling system in vivo. *Proc Natl Acad Sci U S A* 2010;107:1666-1671.
49. Barchetta I, Angelico F, Del Ben M, Baroni MG, Pozzilli P, Morini S, et al. Strong association between non alcoholic fatty liver disease (NAFLD) and low 25(OH) vitamin D levels in an adult population with normal serum liver enzymes. *BMC Med* 2011;9:85.
50. Targher G, Bertolini L, Scala L, Cigolini M, Zenari L, Falezza G, et al. Associations between serum 25-hydroxyvitamin D3 concentrations and liver histology in patients with non-alcoholic fatty liver disease. *Nutr Metab Cardiovasc Dis* 2007;17:517-524.
51. He X, Shen Y, Ma X, Ying L, Peng J, Pan X, et al. The association of serum FGF23 and non-alcoholic fatty liver disease is independent of vitamin D in type 2 diabetes patients. *Clin Exp Pharmacol Physiol* 2018;45:668-674.
52. Cho YH, Kim JW, Shim JO, Yang HR, Chang JY, Moon JS, et al. Association between vitamin D deficiency and suspected nonalcoholic fatty liver disease in an adolescent population. *Pediatr Gastroenterol Hepatol Nutr* 2019;22:233-241.
53. Jaruvongvanich V, Ahuja W, Sanguankeo A, Wijarnpreecha K, Upala S. Vitamin D and histologic severity of nonalcoholic fatty liver disease: a systematic review and meta-analysis. *Dig Liver Dis* 2017;49:618-622.
54. Saberi B, Dadabhai AS, Nanavati J, Wang L, Shinohara RT, Mullin GE. Vitamin D levels do not predict the stage of hepatic fibrosis in patients with non-alcoholic fatty liver disease: a PRISMA compliant systematic review and meta-analysis of pooled data. *World J Hepatol* 2018;10:142-154.
55. Keane JT, Elangovan H, Stokes RA, Gunton JE. Vitamin D and the liver-correlation or cause? *Nutrients* 2018;10:496.