

Relationships among *Calibrachoa*, *Fabiana* and *Petunia* (Petunieae tribe, Solanaceae) and a new generic placement of Argentinean endemic *Petunia patagonica*

Alejandrina Alaria¹, John H. Chau^{2,3}, Richard G. Olmstead², Iris E. Peralta^{1,4}

1 Agronomy Faculty, National University of Cuyo, Alte. Brown 500, Luján de Cuyo, Mendoza, Argentina
2 Department of Biology, University of Washington, Seattle, Washington, 98195, USA **3** Centre for Ecological Genomics and Wildlife Conservation, Department of Zoology, University of Johannesburg, Auckland Park 2006, South Africa **4** IADIZA CCT CONICET, Adrián Ruiz Leal s/n Parque general San Martín, Mendoza, Argentina

Corresponding author: Iris E. Peralta (iperalta@fca.uncu.edu.ar)

Academic editor: Leandro Giacomini | Received 7 May 2021 | Accepted 3 January 2022 | Published 15 April 2022

Citation: Alaria A, Chau JH, Olmstead RG, Peralta IE (2022) Relationships among *Calibrachoa*, *Fabiana* and *Petunia* (Petunieae tribe, Solanaceae) and a new generic placement of Argentinean endemic *Petunia patagonica*. *PhytoKeys* 194: 75–93. <https://doi.org/10.3897/phytokeys.194.68404>

Abstract

Calibrachoa Cerv., *Fabiana* Ruiz & Pav., and *Petunia* Juss. form a clade within tribe Petunieae (Solanaceae). Phylogenetic studies of Petunieae, either as part of a family-wide analysis or focusing on the genera *Calibrachoa* and *Petunia*, have either left *Fabiana* unsampled or included only a single species. These studies have found conflicting relationships among the three genera with all three possible topologies obtained. *Petunia patagonica* (Speg.) Millán, originally described in the genus *Nierembergia* Ruiz & Pav., is morphologically distinct within *Petunia* and geographically disjunct from other members of the genus. For the first time, in this study we include multiple species of *Fabiana*, *Calibrachoa*, and *Petunia*, including *P. patagonica*. Using three chloroplast DNA regions and the nuclear gene GBSSI, or “waxy,” our results provide strong support for a sister group relationship between *Calibrachoa* and *Fabiana* and for the placement of *P. patagonica* within *Fabiana*. Since there is already a species *Fabiana patagonica* Speg., we provide the new name *Fabiana australis* Alaria nom. nov. to replace *Petunia patagonica*.

Keywords

Fabiana australis, Patagonia, *Petunia patagonica*, Petunieae, phylogeny

Introduction

Solanaceae Juss. are one of the most important families among Angiosperms not only for their fundamental contribution to the human diet but also for their diversity and ecological functions in many ecosystems worldwide, especially in the Neotropics (Olmstead 2013). Solanaceae are a family of approximately 90 genera and ca. 2700–2800 species (Olmstead and Bohs 2007; Olmstead et al. 2008, but see Knapp et al. 2004 for a higher estimate). Molecular phylogenetic studies in Solanaceae, initially based on chloroplast DNA sequence data (Olmstead and Palmer 1992; Spooner et al. 1993; Olmstead and Sweere 1994; Olmstead et al. 1999; Gemeinholzer and Wink 2001; Santiago-Valentin and Olmstead 2003; Clarkson et al. 2004; Bohs 2005; Levin et al. 2005, 2006; Weese and Bohs 2007; Olmstead et al. 2008), and more recently using a combination of chloroplast and nuclear loci and with nearly all genera and over 1,000 species sampled, have produced a robust dated molecular phylogeny (Goldberg et al. 2010; Särkinen et al. 2013; Ng and Smith 2015; Dupin et al. 2016).

Molecular phylogenetic studies unraveled relationships that were not consistent with traditional classification of the family and split up tribe Nicotianeae and resurrected tribe Petunieae to include most of the former Nicotianeae, excluding *Nicotiana* L., but including *Brunfelsia* L. (Olmstead et al. 1999, 2008; Olmstead and Bohs 2007). These results showed that the genera *Petunia* Juss., *Calibrachoa* Cerv., and *Fabiana* Ruiz & Pav. form a strongly supported clade and provided weak evidence suggesting that *Fabiana* is sister to *Calibrachoa* and that together they are sister to *Petunia*. The tribe Petunieae has been subject to several phylogenetic studies, with most of the focus on *Petunia* and *Calibrachoa* (Ando et al. 2005; Kulcheski et al. 2006; Stehmann et al. 2009; Fregonezi et al. 2012, 2013; Reck-Kortmann et al. 2014, 2015; Mäder and Freitas 2019). Few of these studies have included representatives of *Fabiana*, and when they do, relationships among the three genera sometimes do not agree (e.g., Särkinen et al. 2013; Reck-Kortmann et al. 2015; Mäder and Freitas 2019). Also, the rare species *Petunia patagonica* (Speg.) Millán, which is morphologically distinct and geographically disjunct from other *Petunia* species, has an uncertain placement in Petunieae (Stehmann and Greppi 2013; Reck-Kortmann et al. 2015).

Fabiana is endemic to South America, distributed in southern Peru, Bolivia, Chile, and Argentina, with 15 species of shrubs adapted to the high Andean deserts of Puna, Prepuna, Monte, and Patagonia, growing from sea level to 4900 m elevation in sandy, rocky soils of very low fertility, low organic matter and variable salt content (Barboza and Hunziker 1993; Alaria and Peralta 2013; Alaria 2015). *Fabiana* species have characteristic morphological adaptations: leaflessness or small leaves, photosynthetic and resinous stems, and flat or cushion growth habits (Alaria 2015), and they play an important ecological role as codominant shrubs in some plant communities. *Petunia patagonica* is restricted to the Patagonian region of Argentina, and its identity is controversial; it was first described in *Nierembergia* Ruiz & Pav. by Spegazzini (1897) and subsequently transferred to *Petunia* by Millán (1941).

In this study we explore the relationships among these three genera using sequences of the plastid *trnS-trnG*, *trnL-trnF* and *psbA-trnH* regions and partial sequences of the nuclear GBSSI or “waxy” gene, providing the first evidence of relationships among species of *Fabiana* and resolving the systematic position of the enigmatic species *Petunia patagonica*.

Materials and methods

Taxon sampling

Leaf samples were obtained from fresh material collected in the natural habitat of species or from cultivated plants, and preserved in silica gel. Data, including collecting site, voucher, and herbarium where the voucher has been deposited, are indicated in Appendix 1 for specimens of tribe Petunieae: *Bouchetia* Dunal (1 species), *Brunfelsia* (1), *Calibrachoa* (4), *Fabiana* (9), *Nierembergia* (1), and *Petunia* (8, including *P. patagonica*), and outgroup taxa in the genera *Benthamiella* Speg. (1 species), *Nicotiana* (3), *Pantacantha* Speg. (1), and *Solanum* L. (1).

Additional specimens were analyzed for morphological traits, mainly species of *Calibrachoa*, *Fabiana*, *Nierembergia*, and *Petunia* in the Argentinean herbaria: BAB, CORD, CTES, LP, LIL, MEN, MERL, and SI, as well as in herbaria in Bolivia: LPB and HSB; Chile: LS; Perú: USM; and England: K (all acronyms are in accordance to *Index Herbariorum*; <http://sweetgum.nybg.org/science/ih/>). Specimens of *Petunia patagonica* were examined and are cited after the species description in the Discussion.

DNA amplification and sequencing

DNA extraction was performed using the Qiagen DNeasy Plant Mini Kit (<http://www.qiagen.com>). Three regions of chloroplast DNA were amplified. For the *trnL-trnF* region, the primers and amplification conditions of Taberlet et al. (1991) were used. This region was included in the phylogenetic analysis of Olmstead et al. (2008), where it provided essential characters for their classification of Solanaceae. Two other plastid fragments were selected for being more variable molecular markers in *Calibrachoa* (Fregonezi et al. 2012) and *Petunia* (Lorenz-Lemke et al. 2006; Kulcheski et al. 2006): the *trnS-trnG* region and the *psbA-trnH* region. For the *trnS-trnG* region, the primers and amplification conditions of Hamilton (1999) were used, and for the *psbA-trnH* region, the primers and amplification conditions of Sang et al. (1997) were used. The nuclear gene GBSSI or “waxy”, which has a single copy in tomato (*Solanum lycopersicum* L.) and diploid potato varieties (*Solanum tuberosum* L.) (van der Leij et al. 1991), was selected because it is an informative marker for phylogenetic analyses in Solanaceae (Peralta and Spooner 2001; Walsh and Hoot 2001; Levin and Miller 2005; Yuan et al. 2006; Spooner et al. 2008; Levin et al. 2011; Särkinen et al. 2013).

The first waxy sequences of *Fabiana* specimens were obtained with primers initially designed for *Solanum lycopersicum* (Peralta and Spooner 2001), but new Petunieae-specific primers were generated: WAXY 5' GTGGGTACTGAGGTTGGTCCTT and WAXY 3' GGGCTCACTGTAACCACCCTAT, improving amplification of representative samples. Tomato and potato specimens were also amplified for waxy as controls for the expected fragment length, using a known molecular mass marker (Lambda/EcoRI-HindIII Marker). Purified PCR products were sequenced using standard Sanger sequencing methods at the Biogenomics Unit of the Institute of Biotechnology of the National Institute of Agricultural Technology (INTA Castelar), Buenos Aires, Argentina.

Editing and aligning of chloroplast and nuclear sequences

The sequences were manually edited with PROcessor of SEquences (PROSEQ) version 2.9 (Filatov 2002). Alignment was performed in BioEdit version 5.0.6. (Hall 2004), first using ClustalW and then adjusted by manual alignment. Waxy alignments were made by comparing sequences with the gene in *Solanum tuberosum* (GenBank accession X83220). Chloroplast fragments were aligned with *Petunia axillaris* sequences for *trnS-trnG* (JF918370), *trnL-trnF* (AY098702), and *psbA-trnH* (DQ225610).

Phylogenetic analysis

We created three datasets for phylogenetic analyses. One dataset consisted of the three plastid loci for 21 species. A second dataset comprising 20 samples consisted of the nuclear waxy sequences. The third dataset comprising 18 samples consisted of the three plastid loci and the nuclear waxy gene concatenated for each species for which sequences for waxy and at least two of the three plastid loci were available. For each locus, we compared nucleotide substitution models using the Akaike Information Criterion from analyses in jModeltest 2.1.4 (Guindon and Gascuel 2003; Darrriba et al. 2012) and chose an appropriate model within the 95% confidence interval. Phylogenetic analyses were performed using two different inference methods, maximum likelihood (ML) and Bayesian. In analyses with a concatenated sequence dataset, each locus was treated as a separate partition, and the GTR + gamma model of nucleotide substitution was used for each partition. In analyses with just waxy, the HKY + gamma model was chosen. We performed ML analyses using GARLI 2.0 (Zwickl 2006). We executed four replicates of each full search, and used a generation threshold for termination of 20,000 and score threshold for termination of 0.001. Default settings were used for all other parameters. We additionally performed bootstrap searches using a generation threshold for termination of 10,000. For concatenated datasets, 500 bootstrap replicates were done, and for the waxy dataset, 1,000 bootstrap replicates were done. Bayesian analyses were done in MrBayes 3.2.1 (Ronquist et al. 2012) with two runs with four chains each. For concatenated datasets, analyses were run for 10,000,000 generations, sampling every 1,000 generations. For the waxy dataset, analyses were

run for 5,000,000 generations with a sampling frequency of 500 generations. We determined that convergence was attained when the average standard deviation of split frequencies was <0.05 and the estimated sample size of parameters was >200 in Tracer 1.5 (Rambaut and Drummond 2009). Majority-rule consensus trees were constructed after discarding the initial 25% of samples as burn-in.

Results

The analyses of concatenated chloroplast sequences (Fig. 1) confirmed monophyly of the genera *Calibrachoa*, *Fabiana*, and *Petunia*, with the exclusion of *P. patagonica* (see below) and the phylogenetic relationships among the three genera was the same found by Olmstead et al. (2008) with *Petunia* sister to *Fabiana* and *Calibrachoa*, and the last two sister to each other. With limited sampling in the rest of tribe Petunieae and outgroups, *Nierembergia* is weakly supported as sister to *Nicotiana*. The analysis also strongly supports the placement of *Petunia patagonica* within *Fabiana*.

Waxy amplifications always showed a single band for a fragment of similar size to the one in potato and tomato controls. Although waxy gene copy number is unknown in *Fabiana*, *Calibrachoa*, and *Petunia*, it is expected to be a single copy and orthologous in the analyzed taxa, as has been demonstrated in other diploid Solanaceae species (van der Leij et al. 1991). The waxy phylogeny of 20 taxa (Fig. 2) is consistent with the chloroplast DNA analyses in recovering the monophyly of *Calibrachoa*, *Fabiana*, and *Petunia*, and the same relationships among them. Similarly, *Petunia patagonica* is included within *Fabiana*. With strong support, *Nierembergia* is resolved as sister to *Bouchetia*.

The results of the analyses of the concatenated sequences of chloroplast loci and waxy combined also recovered the same major relationships (Fig. 3). Monophyly of *Fabiana* with *Petunia patagonica* nested within it is strongly supported (posterior probability = 1.0). In these analyses, *P. patagonica* is weakly supported as sister to *Fabiana imbricata* Ruiz and Pav. Additionally, *Fabiana* is resolved as sister to *Calibrachoa* with strong support, and *Petunia* is sister to the clade comprising *Fabiana* and *Calibrachoa*. *Nierembergia* forms a clade with the remaining representatives of Petunieae with strong support.

Discussion

Sequences of three chloroplast markers and the nuclear gene waxy were informative for the inference of phylogenetic relationships among *Calibrachoa*, *Fabiana*, and *Petunia* in tribe Petunieae. Both the analyses of the combined chloroplast regions and the nuclear gene waxy corroborated *Calibrachoa* as sister to *Fabiana* with strong support, as obtained by Olmstead et al. (2008). A few studies of Petunieae with a single species of *Fabiana* sampled obtained results with *Fabiana* either sister to *Petunia* plus *Calibrachoa* (Särkinen et al. 2013) or *Petunia* (Reck-Kortmann et al. 2015; Mäder and Freitas 2019), in contrast to our results. All of our analyses also found *Petunia patagonica* to



Figure 1. Chloroplast DNA tree of 17 Petunieae species and four outgroups. Phylogeny based on maximum likelihood analysis of concatenated *trnS-trnG*, *trnL-trnF*, and *psbA-trnH* chloroplast fragments. Maximum likelihood bootstrap values and Bayesian posterior probabilities shown at nodes.

be nested within *Fabiana*. This result is consistent with that of Reck-Kortmann et al. (2015), who found *P. patagonica* sister to *F. imbricata* and the combined clade sister to the rest of *Petunia*; but with only a single representative of *Fabiana*, that study was not able to reveal conclusively the placement of *P. patagonica* within *Fabiana*. Considering

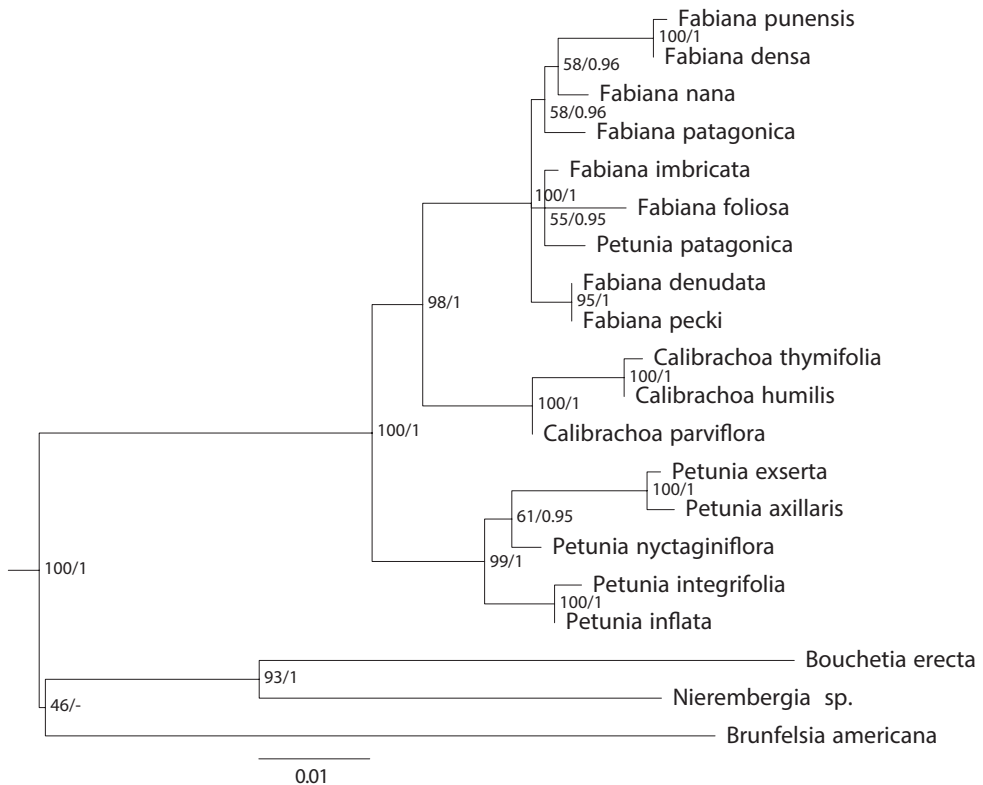


Figure 2. Nuclear waxy tree of 20 Petunieae species. Phylogeny based on maximum likelihood analysis of the nuclear waxy gene. Maximum likelihood bootstrap values and Bayesian posterior probabilities shown at nodes.

these phylogenetic results as well as shared morphological characteristics, geographical distribution, and chromosomal number between *Fabiana* and *Petunia patagonica* (Reck-Kortmann et al. 2015), the transfer of *Petunia patagonica* to the genus *Fabiana* is strongly supported.

Circumscription of *Fabiana* and transfer of *Petunia patagonica* to *Fabiana*

This study resolves the phylogenetic position of *Petunia patagonica*, an enigmatic species of controversial generic affinity. Spegazzini (1897) originally described this species in the genus *Nierembergia* based on a specimen collected in Gulf Saint George, Argentina. The corolla and androecium resemble other *Nierembergia* species, with a narrow base to the corolla tube that expands distally. Subsequently, in a review of *Nierembergia*, Millán (1941) transferred the species to *Petunia*, considering its floral characters as closer to this genus. The species has several characteristics that differentiate it from all other *Petunia* species and has been considered an outlier in the genus based on its geographic distribution and chromosome number (Stehmann and Greppi 2013;

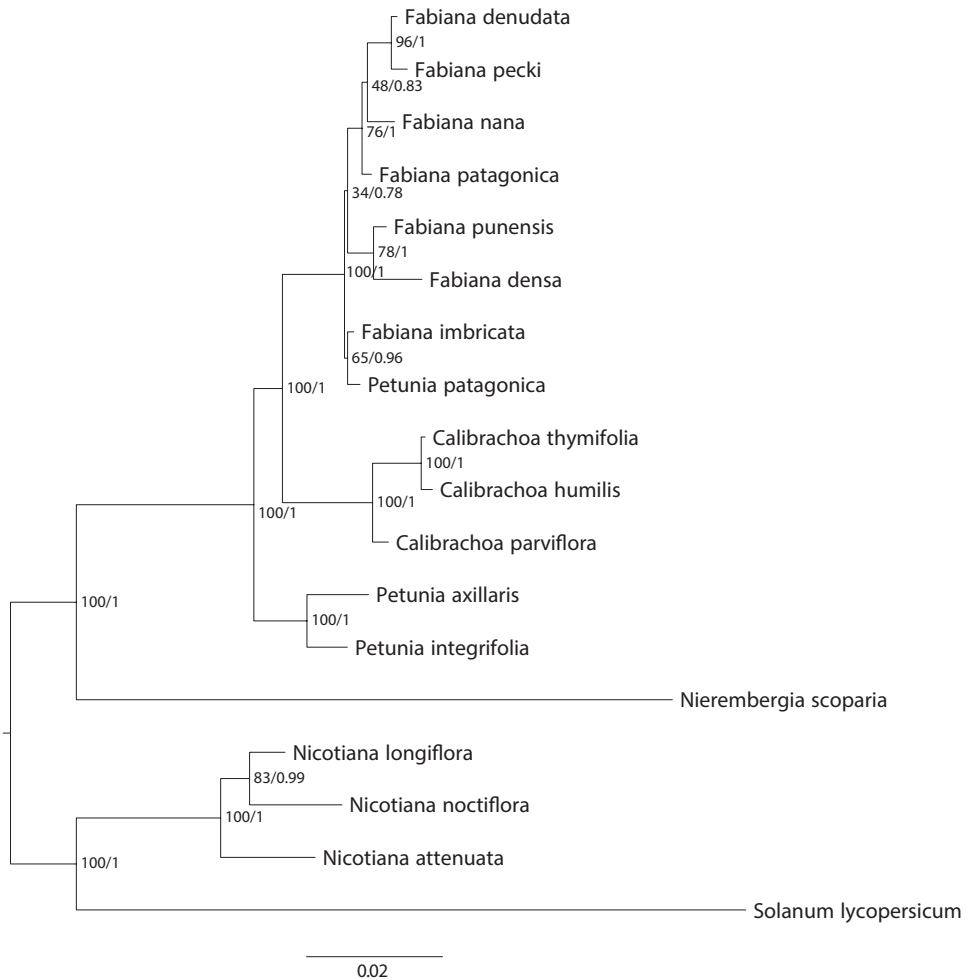


Figure 3. Combined chloroplast and nuclear DNA tree of 14 *Petunieae* species and four outgroups. Phylogeny based on maximum likelihood analysis of chloroplast fragments *trnS-trnG*, *trnL-trnF* and *psbA-trnH* and the nuclear waxy gene concatenated. Maximum likelihood bootstrap values and Bayesian posterior probabilities shown at nodes.

Reck-Kortmann et al. 2015). The species was included in a molecular phylogenetic study with several species of *Petunia*, two species of *Calibrachoa*, but only one species of *Fabiana* and was found in a small clade with *F. imbricata*, which was sister to a clade comprising the other species of *Petunia* (Reck-Kortmann et al. 2015).

Traditional classifications of *Petunia patagonica* have relied primarily on morphology, but with the insight gained from molecular phylogenetic studies, we can see that taxonomists weighed different floral traits in assigning the species first to *Nierembergia* and then to *Petunia*, while overlooking the similarities with *Fabiana*, including the resinous stems and dorsifixed anthers. Other characteristics, such as the chromosome number of

Petunia patagonica (n = 9), match those found in *Fabiana* species (Acosta et al. 2006). The particular distribution of this species in southern Patagonia (Fig. 4) and the environment where it grows, are similar to those of other *Fabiana* species (e.g., *F. imbricata*, *F. foliosa* (Speg.) S.C.Arroyo and *F. nana* (Speg.) S.C.Arroyo). The results of the molecular phylogenetic analyses obtained in this work also support its transfer to the genus *Fabiana*.

***Fabiana australis* Alaria, nom. nov.**

urn:lsid:ipni.org:names:77297063-1

Figures 4, 5

Petunia patagonica (Speg.) Millán. Darwiniana 5: 544 1941.

Basionym. *Nierembergia patagonica* Speg. Revista Fac. Agron. Univ. Nac. La Plata 3: 357. 1897, non *Fabiana patagonica* Speg. (1897). Type: Argentina. Prov. Santa Cruz, Golfo de San Jorge, C. Ameghino, Febr. 1896, “in campis aridis glariosis” (holotype: LP 006658!).

Description. Densely branched shrubs forming compact cushions of approximately 50 cm tall and up to 2.5 (–4) m in diameter; stems erect, leafy, glandular-pubescent, resinous. Leaves alternate but apparently verticillated by shortening of the internodes, sessile, fleshy, glandular; linear, elliptical or obovate, blade 3–4 (5) mm long by 1–2 mm wide. Flowers terminal, solitary, erect; flowering pedicels of 4–6 mm. Calyx tubular or slightly campanulate, (8–) 11–12 mm long, externally with dense glandulous indumentum, internally with scattered glandulous pubescence, short and broadly triangular lobes, 2–3 mm long by 2–3.5 mm wide, almost as long as wide. Corolla yellow with marked violet nerves, but also with color variation from light purple to deep violet, infundibuliform, 20–25 (–30) mm long, externally glandular, broad triangular lobes 2.5–5 mm long by 6–10 mm wide. Stamens heterodynamous, adhered to the middle third of the corolla, about 9 mm from the base of the corolla; filaments 2 short and 3 long, somewhat geniculate at the point of insertion with short glandular hairs scattered at the base; ellipsoid anthers of 1–1.5 mm. Ovary obovoid, 2.5–3 mm long, 1.2–1.5 mm wide, with nectariferous disc surrounding the base, 10–15 mm long style, truncated stigma, shallowly split. Capsule ovoid, 5–9 mm long by 3–5.5 mm wide. Seeds numerous, polyhedral in shape, 2–2.5 mm long.

Common name. “Mogote” meaning mound shape (Santa Cruz: Arroyo 1999)

Geographical distribution and habitat. Endemic to Patagonian Argentina, in the provinces of Chubut and Santa Cruz, from 90 to 700 m elevation, inhabiting dry and cold environments, on stony, sandy soils, sometimes rich in silt and clay, poor in organic matter. It forms large populations of cushion shrubs with numerous showy flowers (Fig. 6).

Taxonomic notes. The epithet *australis* was selected based on the restricted distribution of this species in southern Argentina. It is not possible to use *patagonica* as a specific epithet in *Fabiana*, because it is already in use in *Fabiana patagonica* Speg. *Fabiana australis* is one of the southernmost species of the genus. It shares with *F. foliosa* and *F. nana* a similar habit forming dense cushions in dry, cold, and poor soils of Patagonian Argentina.

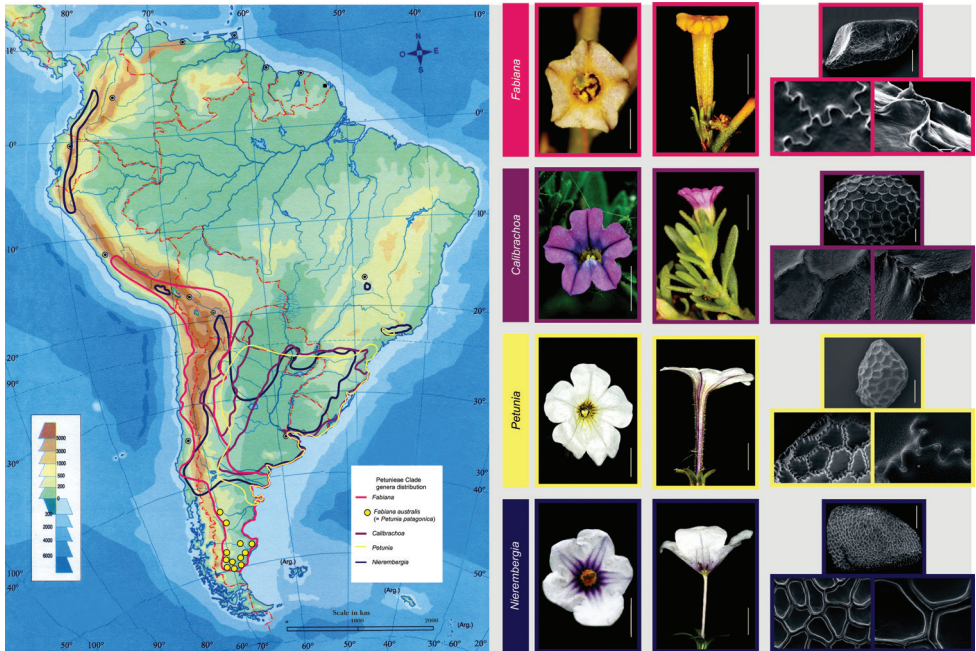


Figure 4. Geographic distribution of the genera *Fabiana*, *Calibrachoa*, *Petunia*, and *Nierembergia*, and the species *Fabiana australis* Alaria. Flowers and seeds of representative species: *Fabiana patagonica* Speng (first flower scale: 2.5 mm, second flower scale: 5 mm, seed scale: 0.5 mm, surface details magnifications 600× and 1,500×); *Calibrachoa parviflora* (Juss.) D'Arcy (first flower scale: 2.5 mm, second flower scale: 5 mm, seed scale: 0.5 mm, surface details magnifications 500× and 1,500×); *Petunia axillaris* (Lam.) Britton, Sterns & Poggenb. (first flower scale= 5 mm, second flower scale: 10 mm, seed scale: 0.5 mm, surface details magnifications 600× and 1,500×); *Nierembergia pulchella* Gillies ex Miers (first flower scale: 5 mm, second flower scale: 10 mm, seed scale: 0.5 mm, surface details magnifications 600× and 1,500×). Photograph IBODA, Flora Argentina database.

Representative specimens examined. ARGENTINA: **Santa Cruz:** Dpto. Corpen Aike, G.E. Barboza 3706 (CORD); O. Boelcke 16264 (BAB); A.A. Cocucci 3684 & 3723 (CORD); M.N. Correa 6527 (BAB); R.H. Fortunato 7492 (BAB); C.A. O'Donnell 3794 (CORD00015699). Dpto. Deseado, L.M. Bernardello & M.R. Figueroa Romero 335 (CORD00015696!); O. Boelcke, 12214 (BAB); A.A. Cocucci 4175 (CORD); M.N. Correa 2644 & 6697 (BAB); B.E. Leuenberger 4100 (B: D-14191 Berlin); M.C. Romanczuk 989 (UEC); F.B. Vervoort 5658 (CORD 00015700!). Dpto. Güer Aike, A. Soriano 5062 (BAB). Dpto. Lago Argentino, G.E. Barboza 3732 (CORD); A.A. Cocucci 471 (CORD 00015694!); R.H. Fortunato 4967 (BAB, ARIZ, NY, HRP); C. Guerrero 785 (SI). Dpto. Magallanes, G.E. Barboza 3704 (CORD); O. Boelcke 15394 (BAB); Iter Patagonicum 762 L. Hauman & C.M. Hicken (SI); B.E. Leuenberger & S. Arroyo 3710 (CORD 00015698!). Dpto. Río Chico, M.N. Correa & E.G. Nicora 3517 (BAB; CORD 00015697!); G.E. Barboza 3696 (CORD); G.E. Barboza 3746 (CORD; SI 063988!); G.E. Barboza 3748 (CORD); O. Boelcke 12810 (BAB); J.M. Bonifacino 2986 (SI); C.M. Hicken 10245 (SI); F.O. Zuloaga 13978 &

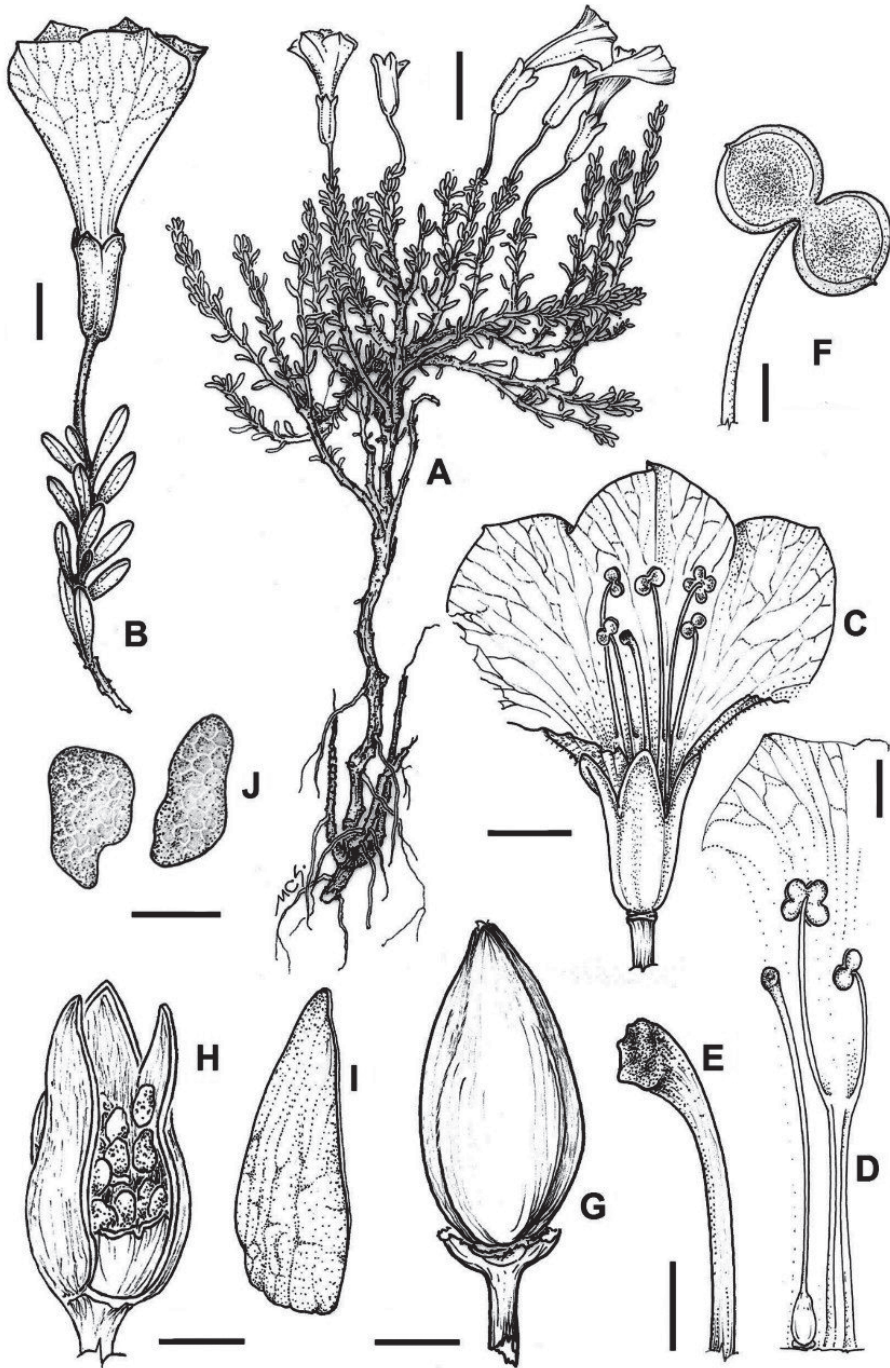


Figure 5. *Fabiana australis* Alaria. **A** plant **B** flowering branch **C** flower **D** corolla deployed showing gynoecium and stamens of different length **E** stigma **F** anthers **G** capsule **H** capsule showing seeds, **I** capsule valve **J** seeds. Scale bars: 10 mm (**A**); 4 mm (**B**); 5 mm (**C**); 2.5 mm (**D**); 1 mm (**E**); 0.5 mm (**F**); 2 mm (**G, H**). Illustration by Cecilia Scoones.



Figure 6. *Fabiana australis* Alaria. Plants habit and flower details (Zuloaga FO 13991, SI). Photograph IBODA, Flora Argentina database.

13991 (SI). Valle del Río Santa Cruz C. Burmeister s.n. & 95 (SI); M. Gentili 330 (BAB); J. Koslowsky 122 (CORD 00015695!). Without locality A. Donat 206 (SI); P.K.H. Dusén 5496 (SI); E. Molina Massey 31 (SI); Tessleff 5496 (SI). **Chubut:** Dpto. Futaleufú, A.A. Cocucci 3997 (CORD 00022097!); Dpto. Paso de Indios, S.C. Arroyo 208 (BAB, LIL, K); Dpto. Sarmiento, A. Alaria 321 (MERL). Dpto. Languíneo, A. Alaria 324 (MEN).

Taxonomic characters differentiating *Calibrachoa*, *Fabiana*, *Petunia*, and *Nierembregia* are described in the following key. Geographic distribution of the four genera and *Petunia patagonica*, as well as photographs of flowers and seeds of representative species of each genus, are illustrated in Figure 4.

Key to genera

- 1 Resinous shrubs to camephytes, stems densely leafy to partially foliated and even aphyllous; reduced membranaceous, slightly fleshy or leathery leaves. Dorsifixed anthers, usually elongated ***Fabiana***
- Non resinous, annual or perennial herbs, rarely subshrubs; leafy stems, developed membranaceous to fleshy leaves. Ventrifixed anthers with different shapes: reniform, globose, or ovate..... **2**

- 2 Hypocrateriform corolla with narrow and cylindrical tube. Androecium with 5 fertile stamens equal in length or heterodynamous, generally with 2 longer and 3 shorter stamens, adnate at the top edge of the corolla tube and generally connivent around the style; wide stigma usually tightly arranged between the anthers; staminal filaments and style apex usually straight. Nectary absent. Polyhedral seed, straight embryo.....*Nierembergia*
- Infundibuliform to campanulate, rarely hypocrateriform, corolla with wide tube. Androecium with 5 fertile heterodynamous stamens, generally with 2 longer, 2 medium length, and one shorter stamen, or 4 subequal and one shorter stamen, adnate at the top edge of the corolla tube but rarely connivent around the style; narrow stigma, staminal filaments and apex style usually curved. Nectary present. Ellipsoid, round, or reniform seed, straight or slightly curved embryo **3**
- 3 Corolla with reciprocative aestivation, the induplicated anterior lobe covering the other four conduplicated lobes, or rarely imbricate aestivation; calyx usually divided nearly to the middle, lobes narrowing towards the apex; seed episperm with straight anticlinal cell walls *Calibrachoa*
- Corolla with imbricate aestivation; deeply lobed calyx, lobes linear or spatulate, widening towards the apex; seed episperm with wavy anticlinal cell walls..... *Petunia*

Acknowledgements

The authors thank Gloria Barboza and Sandra Knapp for their taxonomic insights into tribe Petunieae, Cecilia Scoones for botanical illustrations, and Cinthia Costa for map and photograph designs. This study was supported by CONICET and SIIP - UNCuyo awards. The authors have declared that no competing interests exist.

References

- Acosta MC, Ordonez Adel V, Cocucci AA, Moscone EA (2006) Chromosome reports in South American Nicotianeae (Solanaceae), with particular referece to *Nierembergia*. *Annals of the Missouri Botanical Garden* 93(4): 634–646. [https://doi.org/10.3417/0026-6493\(2006\)93\[634:CRISAN\]2.0.CO;2](https://doi.org/10.3417/0026-6493(2006)93[634:CRISAN]2.0.CO;2)
- Alaria AS (2015) Género *Fabiana* Ruiz et Pav. (Solanaceae): Diversidad, Distribución, Taxonomía y Filogenia basada en caracteres moleculares y morfológicos. Trabajo de Tesis para optar al grado académico de Doctor en Ciencias Biológicas Programa de Posgrado en Biología PROBIOL. Universidad Nacional de Cuyo, Mendoza, Argentina.
- Alaria AS, Peralta IE (2013) Las especies de *Fabiana* Ruiz et Pav. (Solanaceae) que crecen en Chile. *Chloris Chilensis* 16(1): 1–24. <http://www.chlorischile.cl>
- Ando T, Kokubun H, Watanabe H, Tanaka N, Yukawa T, Hashimoto G, Marchesi E, Suárez E, Basualdo IL (2005) Phylogenetic analysis of *Petunia* sensu Jussieu (Solanaceae) using

- chloroplast DNA RFLP. *Annals of Botany* 96(2): 289–297. <https://doi.org/10.1093/aob/mci177>
- Arroyo SC (1999) *Petunia*. In: Correa MN (Ed.) *Flora Patagónica. Parte VI. Dicotiledoneas. Gamopétalas (Ericaceae a Calyceraceae)*. INTA, Buenos Aires, 279–282.
- Barboza GE, Hunziker AT (1993) Estudios en Solanaceae XXXIV. Revisión taxonómica de *Fabiana*. *Kurtziana* 22: 109–153.
- Bohs L (2005) Major clades in *Solanum* based on *ndbF* sequence data. In: Keating RC, Hollowell VC, Croat TB (Eds) *A festschrift for William G. D'Arcy: the legacy of a taxonomist. Monographs in Systematic Botany from the Missouri Botanical Garden* 104: 27–49.
- Clarkson JJ, Knapp S, Aoki S, Garcia VF, Olmstead RG, Chase MW (2004) Phylogenetic relationships in *Nicotiana* (Solanaceae) inferred from multiple plastid DNA regions. *Molecular Phylogenetics and Evolution* 33(1): 75–90. <https://doi.org/10.1016/j.ympev.2004.05.002>
- Darriba D, Taboada GL, Doallo R, Posada D (2012) jModelTest 2: More models, new heuristics and parallel computing. *Nature Methods* 9(8): e772. <https://doi.org/10.1038/nmeth.2109>
- Dupin J, Matzke NJ, Särkinen T, Knapp S, Olmstead RG, Bohs L, Smith SD (2016) Bayesian estimation of global biogeographic history of Solanaceae. *Journal of Biogeography* 44(4): 887–899. <https://doi.org/10.1111/jbi.12898>
- Filatov DA (2002) PROSEQ: A software for preparation and evolutionary analysis of DNA sequence data sets. *Molecular Ecology Notes* 2(4): 621–624. <https://doi.org/10.1046/j.1471-8286.2002.00313.x>
- Fregonezi JN, Freitas LB, Bonatto S, Semir J, Stehmann JR (2012) Infrageneric classification of *Calibrachoa* (Solanaceae) based on morphological and molecular evidence. *Taxon* 61(1): 120–130. <https://doi.org/10.1002/tax.611009>
- Fregonezi JN, Turchetto C, Bonatto SL, Freitas LB (2013) Biogeographical history and diversification of *Petunia* and *Calibrachoa* (Solanaceae) in the Neotropical Pampas grassland. *Botanical Journal of the Linnean Society* 171(1): 140–153. <https://doi.org/10.1111/j.1095-8339.2012.01292.x>
- Gemeinholzer B, Wink M (2001) Solanaceae: occurrence of secondary compounds versus molecular phylogeny. In: van den Berg RG, Barendse GWM, van der Weerden GM, Mariani C (Eds) *Solanaceae V: Advances in taxonomy and utilization*. Nijmegen University Press, Nijmegen, The Netherlands, 165–177.
- Goldberg EE, Kohn JR, Lande R, Robertson KA, Smith SA, Igic B (2010) Species selection maintains self-incompatibility. *Science* 330(6003): 493–495. <https://doi.org/10.1126/science.1194513>
- Guindon S, Gascuel O (2003) A simple, fast, and accurate algorithm to estimate large phylogenies by maximum likelihood. *Systematic Biology* 52(5): 696–704. <https://doi.org/10.1080/10635150390235520>
- Hall T (2004) BioEdit version 5.0.6. <http://www.mbio.ncsu.edu/BioEdit/bioedit.html>
- Hamilton MB (1999) Four primers pairs for the amplification of chloroplast intergenic regions with intraspecific variation. *Molecular Ecology* 8: 513–525.
- Knapp S, Bohs L, Nee M, Spooner DM (2004) Solanaceae—A Model for Linking Genomics with Biodiversity. *International Journal of Genomics* 5(3): 285–291. <https://doi.org/10.1002/cfg.393>

- Kulcheski FR, Muschner VC, Lorenz-Lemke AP, Stehmann JR, Bonatto SL, Salzano FM, Freitas LB (2006) Molecular phylogenetic analysis of *Petunia* Juss. (Solanaceae). *Genetica* 126(1–2): 3–14. <https://doi.org/10.1007/s10709-005-1427-2>
- Levin RA, Miller JS (2005) Relationships within tribe Lycieae (Solanaceae): Paraphyly of *Lycium* and multiple origins of gender dimorphism. *American Journal of Botany* 92(12): 2044–2053. <https://doi.org/10.3732/ajb.92.12.2044>
- Levin RA, Watson K, Bohs L (2005) A four gene study of evolutionary relationships in *Solanum* section *Acanthophora*. *American Journal of Botany* 92(4): 603–612. <https://doi.org/10.3732/ajb.92.4.603>
- Levin RA, Myers NR, Bohs L (2006) Phylogenetic relationships among the “spiny solanums” (*Solanum* subgenus *Leptostemonum*, Solanaceae). *American Journal of Botany* 93(1): 157–169. <https://doi.org/10.3732/ajb.93.1.157>
- Levin RA, Bernardello G, Whiting C, Miller JS (2011) A new generic circumscription of tribe Lycieae (Solanaceae). *Taxon* 60(3): 681–690. <https://doi.org/10.1002/tax.603005>
- Lorenz-Lemke AP, Mäder G, Muschner VC, Stehmann JR, Bonatto SL, Salzano FM, Freitas LB (2006) Diversity and natural hybridization in a highly endemic species of *Petunia* (Solanaceae): A molecular and ecological analysis. *Molecular Ecology* 15(14): 4487–4497. <https://doi.org/10.1111/j.1365-294X.2006.03100.x>
- Mäder G, Freitas LB (2019) Biogeographical, ecological, and phylogenetic analyses clarifying the evolutionary history of *Calibrachoa* in South American grasslands. *Molecular Phylogenetics and Evolution* 141: e106614. <https://doi.org/10.1016/j.ympev.2019.106614>
- Millán AR (1941) Revisión de las Especies del género *Nierembergia* (Solanaceae). *Darwiniana* 5: 487–547.
- Ng J, Smith SD (2015) Widespread flower color convergence in Solanaceae via alternate biochemical pathways. *The New Phytologist* 209(1): 407–417. <https://doi.org/10.1111/nph.13576>
- Olmstead RG (2013) Phylogeny and biogeography in Solanaceae, Verbenaceae, and Bignoniaceae: A comparison of continental and intercontinental diversification patterns. *Botanical Journal of the Linnean Society* 171(1): 80–102. <https://doi.org/10.1111/j.1095-8339.2012.01306.x>
- Olmstead RG, Bohs L (2007) A summary of molecular systematic research in Solanaceae: 1982–2006. In: Spooner DM, Bohs L, Giovannoni J, Olmstead RG, Shibata D (Eds) *Solanaceae VI: Genomics Meets Biodiversity*. Proceedings of the Sixth International Solanaceae Conference. *Acta Horticulturae* 745: 255–268. <https://doi.org/10.17660/ActaHortic.2007.745.11>
- Olmstead RG, Palmer JD (1992) A chloroplast DNA phylogeny of the Solanaceae: Subfamilial relationships and character evolution. *Annals of the Missouri Botanical Garden* 79(2): 346–360. <https://doi.org/10.2307/2399773>
- Olmstead RG, Sweere JA (1994) Combining data in phylogenetic systematics: An empirical approach using three molecular data sets in the Solanaceae. *Systematic Biology* 43(4): 467–481. <https://doi.org/10.1093/sysbio/43.4.467>
- Olmstead RG, Sweere JA, Spangler RE, Bohs L, Palmer JD (1999) Phylogeny and provisional classification of the Solanaceae based on chloroplast DNA. In: Nee M, Symon D, Lester RN, Jessop J (Eds) *Solanaceae IV: Advances in Biology and Utilization*. Royal Botanic Gardens, Kew, 111–137.

- Olmstead RG, Bohs L, Abdel Migid H, Santiago-Valentin E, Garcia VF, Collier SM (2008) A molecular phylogeny of the Solanaceae. *Taxon* 57(4): 1159–1181. <https://doi.org/10.1002/tax.574010>
- Peralta IE, Spooner DM (2001) GBSSI gene phylogeny of wild tomatoes (*Solanum* L. section *Lycopersicon* [Mill.] Wettst. subsection *Lycopersicon*). *American Journal of Botany* 88(10): 1888–1902. <https://doi.org/10.2307/3558365>
- Rambaut A, Drummond AJ (2009) Tracer, version 1.5. <http://tree.bio.ed.ac.uk/software/tracer> [accessed 10.10.2020]
- Reck-Kortmann M, Silva-Arias GA, Segatto ALA, Mäder G, Bonatto SL, Freitas LB (2014) Multilocus phylogeny reconstruction: New insights into the evolutionary history of the genus *Petunia*. *Molecular Phylogenetics and Evolution* 81: 19–28. <https://doi.org/10.1016/j.ympev.2014.08.022>
- Reck-Kortmann M, Silva-Arias GA, Stehmann JR, Greppi JA, Freitas LB (2015) Phylogenetic relationships of *Petunia patagonica* (Solanaceae) revealed by molecular and biogeographical evidence. *Phytotaxa* 222(1): 17–32. <https://doi.org/10.11646/phytotaxa.222.1.2>
- Ronquist F, Teslenko M, van der Mark P, Ayres DL, Darling A, Höhna S, Larget B, Liu L, Suchard MA, Huelsenbeck JP (2012) MrBayes 3.2: Efficient Bayesian phylogenetic inference and model choice across a large model space. *Systematic Biology* 61(3): 539–542. <https://doi.org/10.1093/sysbio/sys029>
- Sang T, Crawford DJ, Stuessy TF (1997) Chloroplast DNA phylogeny, reticulate evolution, and biogeography of *Paeonia* (Paeoniaceae). *American Journal of Botany* 84(8): 1120–1136. <https://doi.org/10.2307/2446155>
- Santiago-Valentin E, Olmstead RG (2003) Phylogenetics of the Antillean Goetzeoideae (Solanaceae) and their relationships within the Solanaceae based on chloroplast and ITS DNA sequence data. *Systematic Botany* 28: 452–460.
- Särkinen T, Bohs L, Olmstead RG, Knapp SD (2013) A phylogenetic framework for evolutionary study of the nightshades (Solanaceae): A dated 1000-tip tree. *BMC Evolutionary Biology* 13(1): e214. <https://doi.org/10.1186/1471-2148-13-214>
- Spegazzini CL (1897) *Nierembergia patagonica*. *Revista de la Facultad de Agronomía y Veterinaria, La Plata* 3: e557.
- Spooner DM, Anderson GJ, Jansen RK (1993) Chloroplast DNA evidence for the interrelationships of tomatoes, potatoes, and pepinos (Solanaceae). *American Journal of Botany* 80(6): 676–688. <https://doi.org/10.1002/j.1537-2197.1993.tb15238.x>
- Spooner DM, Rodriguez F, Polgar Z, Ballard HE, Jansky SH (2008) Genomic origins of potato polyploids: GBSSI gene sequencing data. *Crop Science* 48(S1): S27–S36. <https://doi.org/10.2135/cropsci2007.09.0504tpg>
- Stehmann JR, Greppi JA (2013) *Petunia*. Solanaceae. In: Zuloaga FO, Belgrano MJ, Anton AMR (Eds) *Flora Vascular de la República Argentina*, vol. 13. Estudio Sigma S.R.L, Buenos Aires, 127–134.
- Stehmann JR, Lorenz-Lemke AP, Freitas LB, Semir J (2009) The Genus *Petunia*. In: Gerats T, Strommer J (Eds) *Petunia* evolutionary, developmental and physiological genetics. Springer, New York, 1–28. https://doi.org/10.1007/978-0-387-84796-2_1

- Taberlet P, Gielly L, Pautou G, Bouvet J (1991) Universal primers for amplification of three non-coding regions of chloroplast DNA. *Plant Molecular Biology* 17(5): 1105–1109. <https://doi.org/10.1007/BF00037152>
- van der Leij FR, Visser RGF, Ponstein AS, Jacobsen E, Feenstra WJ (1991) Sequence of the structural gene for granule-bound starch synthase of potato (*Solanum tuberosum* L.) and evidence for a single point deletion in the amf allele. *Molecular & General Genetics* 228(1–2): 240–248. <https://doi.org/10.1007/BF00282472>
- Walsh BM, Hoot SB (2001) Phylogenetic relationships of *Capsicum* (Solanaceae) using DNA sequences from two noncoding regions: The chloroplast *atpB-rbcL* spacer region and nuclear *waxy* introns. *International Journal of Plant Sciences* 162(6): 1409–1418. <https://doi.org/10.1086/323273>
- Weese TL, Bohs L (2007) A three gene phylogeny of the genus *Solanum* (Solanaceae). *Systematic Botany* 32(2): 445–463. <https://doi.org/10.1600/036364407781179671>
- Yuan Y, Zhang ZY, Chen ZD, Olmstead RG (2006) Tracking ancient polyploids: A retroposon reveals an extinct diploid ancestor in the polyploid ancestry of *Belladonna*. *Molecular Biology and Evolution* 23: 2263–2267. <https://doi.org/10.1093/molbev/msl099>
- Zwickl DJ (2006) Genetic algorithm approaches for the phylogenetic analysis of large biological sequence datasets under the maximum likelihood criterion. PhD dissertation, University of Texas at Austin, USA, 125 pp.

Appendix I

Voucher and locality information for specimens of species collected for this study and GenBank accession numbers for sequences used, with those generated for this study in bold.

Table A1.

Species	Voucher	Location	Coordinates	<i>tmlL-tnmF</i>	<i>tnmS-tnmG</i>	<i>psbA-tnmH</i>	waxy
Pentstemonaceae							
Tribe							
<i>Bouchetia erecta</i> DC ex Dunal	D'Arcy 18213 MO	Mexico	–	–	–	–	OK120263
<i>Brunfelsia americana</i> L.	no voucher	Cultivated, USA, Martha's Bot Gard	–	–	–	–	OK1166947
<i>Calibrachoa humilis</i> (R.E.Fr.) Stehmann & Semir	no voucher	Cultivated, Argentina, FCA, UNCuyo	33°00'28.2"S, 68°52'16.4"W	MZ855907	OK120228	MZ855925	OK120243
<i>Calibrachoa parviflora</i> (Juss) D'Arcy	Alaria 432 MERL	Cultivated, Argentina, FCA, UNCuyo	33°00'28.2"S, 68°52'16.4"W	MZ855908	OK120229	MZ855926	OK120244
<i>Calibrachoa missionica</i> Stehmann & Semir	no voucher	Cultivated, Argentina, FCA, UNCuyo	33°00'28.2"S, 68°52'16.4"W	MZ855909	OK120230	MZ855927	–
<i>Calibrachoa thymifolia</i> (A.St.-Hil.) Stehmann & Semir	no voucher	Cultivated, Argentina, FCA, UNCuyo	33°00'28.2"S, 68°52'16.4"W	MZ855910	–	MZ855928	OK120245
<i>Fabiana bryoides</i> Phil.	Alaria 444 MERL	Argentina, Jujuy	22°31'47.8"S, 66°18'45.4"W	MZ855911	OK120231	MZ855929	–
<i>Fabiana densa</i> J. Rémy	Alaria 365 MERL	Bolivia, Potosí	19°52'48.2"S, 65°40'44.4"W	MZ855912	OK120232	MZ855930	OK120246
<i>Fabiana demudata</i> Miers	Alaria 356 MERL	Argentina, Mendoza	32°29'16.3"S, 69°05'07.5"W	MZ855913	OK120233	MZ855931	OK120247
<i>Fabiana foliosa</i> (Speg.) S.C.Arroyo	Barboza 3760 CORD	Argentina, Santa Cruz	47°20'09"S, 70°59'05"W	–	–	MZ855932	OK120248
<i>Fabiana imbricata</i> Ruiz & Pav.	Alaria 397 MERL	Argentina, Mendoza	35°51'45.1"S, 69°48'27.5"W	MZ855914	OK120234	MZ855933	OK120249
<i>Fabiana nama</i> (Speg.) S.C.Arroyo	Alaria 316 MERL	Argentina, Chubut	45°47'44.5"S, 69°04'56.7"W	MZ855915	OK120235	MZ855934	OK120250
<i>Fabiana patagonica</i> Speg.	Alaria 359 MERL	Argentina, Jujuy	22°57'30"S, 65°25'39"W	MZ855916	OK120236	MZ855935	OK120251
<i>Fabiana peckii</i> Niederl.	Alaria 403 MERL	Argentina, Mendoza	34°31'55.2"S, 68°28'14.7"W	MZ855917	OK120237	MZ855936	OK120252
<i>Fabiana punensis</i> S.C.Arroyo	Alaria 048 MERL	Argentina, Tucumán	26°38'39.5"S, 65°49'12.5"W	MZ855918	OK120238	MZ855937	OK120253
<i>Nierembergia scoparia</i> Sendtn.	Alaria 431 MERL	Cultivated, Argentina, FCA, UNCuyo	33°00'28.2"S, 68°52'16.4"W	MZ855920	OK120240	MZ855939	OK120255
<i>Petunia altiplana</i> T. Ando & Hashim	–	–	–	AV772868	DQ792185	DQ791917	–
<i>Petunia axillaris</i> (Lam.) Britton, Sterns & Poggenb.	Alaria 430 MERL	Argentina, Mendoza	32°58'45.7"S, 68°58'8"W	AY098702	JF918370	DQ225610	OK120258
<i>Petunia exserta</i> Stehmann	Chau 312 WTU	Cultivated, USA, University of Washington	–	–	–	–	OK120259

Species	Voucher	Location	Coordinates	tmlL-tmlF	tmS-tmG	psbA-tmH	waxy
<i>Petunia inflata</i> R.E. Fr.	Olmstead S-62 WTU	Cultivated. USA, seed from Birmingham	—	—	—	—	OK120260
<i>Petunia integrifolia</i> (Hook.) Schinz & Tell.	Chau 311 WTU	Cultivated. USA, University of Washington	—	AY772873	JN565848	DQ208151	OK120261
<i>Petunia nyctaginiflora</i> Juss.	Olmstead S-63 WTU	Cultivated. USA, seed from Birmingham	—	—	—	—	OK120262
<i>Petunia patagonica</i> (Speg.) Millán	Alaria 321 MERL	seed collection Argentina, Chubut	45°56'16.8"S, 69°09'12.4"W	MZ855919	OK120239	MZ855938	OK120254
<i>Petunia scheideana</i> L.B. Sm. & Downs	—	—	—	AY772870	DQ792448	DQ792149	—
Outgroups							
<i>Benthameiella pycnophylloides</i> Speg.	Barboza 3688 CORD	Argentina, Santa Cruz	46°57'2"S, 67°22'24.6"W	MZ855921	OK120241	MZ855940	—
<i>Nicotiana attenuata</i> Torr. Ex S. Watson	—	—	—	AY098697	AJ584953	MG182422	KR083023
<i>Nicotiana longiflora</i> Cav.	Alaria 437 MERL	Argentina, Mendoza	32°59'47.7"S, 68°56'1.5"W	MZ855923	AJ584951	MZ855942	OK120256
<i>Nicotiana noctiflora</i> Hook.	Alaria 438 MERL	Argentina, Mendoza	32°59'49.4"S, 68°55'56.6"W	MZ855924	AJ584975	GQ248352	OK120257
<i>Pantacantha ameghinoi</i> Speg.	Barboza 3775 CORD	Argentina, Neuquén	38°52'0"S, 70°34'36.2"W	MZ855922	OK120242	MZ855941	—
<i>Solanum lycopersicum</i> L.	—	—	—	KY887587	HQ856092	KY887587	DQ169036