

See corresponding editorial on page 1255.

Vitamin D supplementation and prevention of cardiovascular disease and cancer in the Finnish Vitamin D Trial: a randomized controlled trial

Jyrki K Virtanen,¹ Tarja Nurmi,¹ Antti Aro,² Elizabeth R Bertone-Johnson,^{3,4} Elina Hyppönen,^{5,6} Heikki Kröger,^{1,7} Christel Lamberg-Allardt,⁸ JoAnn E Manson,^{9,10} Jaakko Mursu,¹ Pekka Mäntyselkä,^{1,11} Sakari Suominen,^{12,13} Matti Uusitupa,¹ Ari Voutilainen,¹ Tomi-Pekka Tuomainen,¹ and Sari Hantunen¹

¹Institute of Public Health and Clinical Nutrition, University of Eastern Finland, Kuopio, Finland; ²Independent scientist, Kangasala, Finland; ³Department of Biostatistics, School of Public Health and Health Sciences, University of Massachusetts, Amherst, MA, USA; ⁴Department of Epidemiology and Health Promotion and Policy, School of Public Health and Health Sciences, University of Massachusetts, Amherst, MA, USA; ⁵Australian Centre for Precision Health, Unit of Clinical and Health Sciences, University of South Australia, Adelaide, Australia; ⁶South Australian Health and Medical Research Institute, Adelaide, Australia; ⁷Department of Orthopaedics, Traumatology and Hand Surgery, Kuopio University Hospital, Kuopio, Finland; ⁸Department of Food and Nutrition, University of Helsinki, Helsinki, Finland; ⁹Department of Medicine, Brigham and Women's Hospital Harvard Medical School, Boston, MA, USA; ¹⁰Department of Epidemiology, Harvard T.H. Chan School of Public Health, Boston, MA, USA; ¹¹Primary Health Care Unit, Kuopio University Hospital, Kuopio, Finland; ¹²Department of Public Health, University of Turku, Turku University Hospital, Turku, Finland; and ¹³School of Health Sciences, University of Skövde, Skövde, Sweden

ABSTRACT

Background: Vitamin D insufficiency is associated with risks of cardiovascular diseases (CVD) and cancer in observational studies, but evidence for benefits with vitamin D supplementation is limited.

Objectives: To investigate the effects of vitamin D₃ supplementation on CVD and cancer incidences.

Methods: The study was a 5-year, randomized, placebo-controlled trial among 2495 male participants ≥ 60 years and post-menopausal female participants ≥ 65 years from a general Finnish population who were free of prior CVD or cancer. The study had 3 arms: placebo, 1600 IU/day, or 3200 IU/day vitamin D₃. Follow-up was by annual study questionnaires and national registry data. A representative subcohort of 551 participants had more detailed in-person investigations. The primary endpoints were incident major CVD and invasive cancer. Secondary endpoints included the individual components of the primary CVD endpoint (myocardial infarction, stroke, and CVD mortality), site-specific cancers, and cancer death.

Results: During the follow-up, there were 41 (4.9%), 42 (5.0%), and 36 (4.3%) major CVD events in the placebo, 1600 IU/d (compared with placebo: HR: 0.97; 95% CI: 0.63–1.49; $P = 0.89$), and 3200 IU/d (HR: 0.84; 95% CI: 0.54–1.31; $P = 0.44$) arms, respectively. Invasive cancer was diagnosed in 41 (4.9%), 48 (5.8%), and 40 (4.8%) participants in the placebo, 1600 IU/d (HR: 1.14; 95% CI: 0.75–1.72; $P = 0.55$), and 3200 IU/d (HR: 0.95; 95% CI: 0.61–1.47; $P = 0.81$) arms, respectively. There were no significant differences in the secondary endpoints or total mortality. In the subcohort, the mean baseline serum 25-hydroxyvitamin D concentration was 75 nmol/L (SD, 18 nmol/L). After 12 months,

the concentrations were 73 nmol/L (SD, 18 nmol/L), 100 nmol/L (SD, 21 nmol/L), and 120 nmol/L (SD, 22 nmol/L) in the placebo, 1600 IU/d, and 3200 IU/d arms, respectively.

Conclusions: Vitamin D₃ supplementation did not lower the incidences of major CVD events or invasive cancer among older adults, possibly due to sufficient vitamin D status in most participants at baseline. *Am J Clin Nutr* 2022;115:1300–1310.

This study was supported by funding from the Academy of Finland (#137826), University of Eastern Finland, Juho Vainio Foundation, Medicinska Understödsföreningen Liv och Hälsa, Finnish Foundation for Cardiovascular Research, Finnish Diabetes Research Foundation, and Finnish Cultural Foundation.

The funding sources had no role in the collection, analysis, and interpretation of data; preparation, review, and approval of the manuscript; or the decision to submit this manuscript for publication.

Supplemental Tables 1 and 2, Supplemental Figures 1–4, and Supplemental Methods 1 and 2 are available from the “Supplementary data” link in the online posting of the article and from the same link in the online table of contents at <https://academic.oup.com/ajcn/>.

Address correspondence to JKV (e-mail: jyrki.virtanen@uef.fi).

Abbreviations used: CVD, cardiovascular disease; FIND, Finnish Vitamin D Trial; RCT, randomized controlled trial; VDR, vitamin D receptor; ViDA, Vitamin D Assessment; VITAL, Vitamin D and Omega-3 Trial; 25(OH)D, 25-hydroxyvitamin D.

Received August 20, 2021. Accepted for publication December 20, 2021.

First published online January 4, 2022; doi: <https://doi.org/10.1093/ajcn/nqab419>.

Keywords: vitamin D, supplementation study, randomized controlled trial, elderly, cardiovascular disease, cancer

Introduction

Vitamin D, either obtained from diet or supplements or produced in the skin, is hydroxylated in the liver to 25-hydroxyvitamin D [25(OH)D], a generally used indicator of vitamin D status. Further, 25(OH)D is metabolized to the physiologically active form 1,25(OH)₂D, which is the high-affinity ligand of the transcription factor vitamin D receptor (VDR). Genome-wide, there are more than known 10,000 VDR binding sites and significant changes in the transcriptome profile in over 1000 genes (1), suggesting a universal action of vitamin D in most tissues.

Findings from observational studies show that vitamin D insufficiency is associated with higher risks of nearly all diseases (2). At the time the Finnish Vitamin D Trial (FIND) was designed (in 2010), such observational data were already available, and ecological studies and laboratory investigations also supported a role for vitamin D in the etiology of cardiovascular diseases (CVD) and cancer (3, 4). Vitamin D was suggested to have a beneficial effect on cancer cell proliferation, apoptosis and cell differentiation, angiogenesis and metastasis, inflammation, vascular smooth muscle proliferation, blood pressure, and glucose homeostasis (3–5). However, there was little evidence from randomized controlled trials (RCT) on the potential of vitamin D supplementation to reduce the incidence of diseases. The largest RCT, with over 35,000 women, the Women's Health Initiative, tested calcium plus vitamin D₃ (400 IU/d) supplementation for a mean of 7 years and failed to show effects on the CVD or cancer incidence (6). In another trial with 2686 older adults, 100,000 IU of vitamin D₃ every 4 months for 5 years did not reduce the CVD or cancer incidence (7). However, in 2007, a meta-analysis of 18 RCTs summarized the effects of vitamin D supplementation and found a modestly lower risk for all-cause mortality (8). In addition, a 4-year RCT among 1179 postmenopausal female participants found that those in the calcium plus vitamin D₃ (1100 IU/day) group were less likely to develop cancer (9). However, none of the RCTs were primarily designed to investigate the nonskeletal effects of vitamin D supplementation and in most trials the vitamin D dose was too low to induce significant changes in serum 25(OH)D concentrations. To fill this gap, large trials such as the Vitamin D and Omega-3 Trial (VITAL) (10) and the Vitamin D Assessment (ViDA) study (11, 12) were started in the early 2010s, with the aim of investigating the effects of high-dose vitamin D₃ supplementation on CVD and cancer prevention (**Supplemental Table 1**).

Data from primary-prevention RCTs is especially scarce in the northern latitudes, like in Finland, where vitamin D production in the skin is limited to only a few summer months. According to our own research, the mean serum 25(OH)D concentration was <50 nmol/L (20 ng/mL) for most of the year in a Finnish study population (13). Lower concentrations were associated with higher risks of total and CVD mortality and with impaired glucose metabolism (13, 14). Therefore, an interventional study to investigate the impacts of high-dose vitamin D₃ supplementation on incidences of diseases in a general aging Finnish population was highly warranted. As a unique feature among the large vitamin D₃ supplementation

trials, an aim was to also investigate dose-responses with 2 different vitamin D₃ doses.

Methods

Trial design

FIND was a 5-year, randomized, double-blind, placebo-controlled supplementation trial of the effects of vitamin D₃ on the incidences of CVD and cancer among generally healthy, White, male participants ≥60 years and postmenopausal female participants (≥65 years) from the general Finnish population, conducted in 2012–2018. The inclusion criteria were: male participants aged ≥60 years and postmenopausal female participants aged ≥65 years without a history of cancer (except nonmelanoma skin cancer) or CVD (including myocardial infarction, stroke, transient ischemic attack, angina pectoris, coronary artery bypass grafting, or percutaneous coronary intervention). The exclusion criteria were: 1) a history of kidney stones, renal failure or dialysis, hypercalcemia, hypo- or hyperparathyroidism, severe liver disease (cirrhosis), or sarcoidosis or other granulomatous diseases, such as active chronic tuberculosis or Wegener's granulomatosis; and 2) use of vitamin D >800 IU/d or calcium >1200 mg/d from all supplemental sources combined, unless the participant was willing to decrease or forego such use during the trial.

The original goal was to recruit 18,000 participants, with 3000 male and 3000 female participants in each arm. Unfortunately, the interest of the aging, generally healthy population to participate in the study turned out to be far lower than anticipated. With data obtained from the Finnish Population Register Center, 30,000 invitation letters were mailed to men aged ≥60 years and women aged ≥60 years who were living in Eastern Finland in spring 2012 (**Figure 1**). There were 2620 participants who accepted the invitation (8.7% response rate). Subsequent recruitment strategies included newspaper advertisements (200,000 copies distribution), unaddressed group ground mails (to 100,000 households), and email advertisements (80,000 members of The Central Association of Finnish Pensioners). These strategies yielded only 154 responses combined, so the recruitment was stopped in spring 2013 and the study was continued with 2495 eligible participants. However, as shown in our earlier reports (13, 14), even a moderate number of study participants may produce statistically significant differences in hard endpoints. Further, in our earlier interventional study with a similar supplementation protocol as in the current study, the achieved difference in the serum 25(OH)D concentrations between the placebo and the 3200 IU/d vitamin D₃ arms at the end of the study was 40 nmol/L (16 ng/mL) (15), which was of the same magnitude as the difference between the extreme 25(OH)D categories in our observational study (13).

The 2495 participants were randomized to receive either 1) 1600 IU/day of vitamin D₃; 2) 3200 IU/day of vitamin D₃; or 3) placebo. Gender-stratified simple randomization in a 1:1:1 ratio was carried out by a statistician who was not a member of the FIND study group, based on computerized random number generation. Randomization was done separately for the larger mail-only cohort and for the subcohort.

The intervention period ran between September 2012 and October 2018. A random subcohort of 600 participants

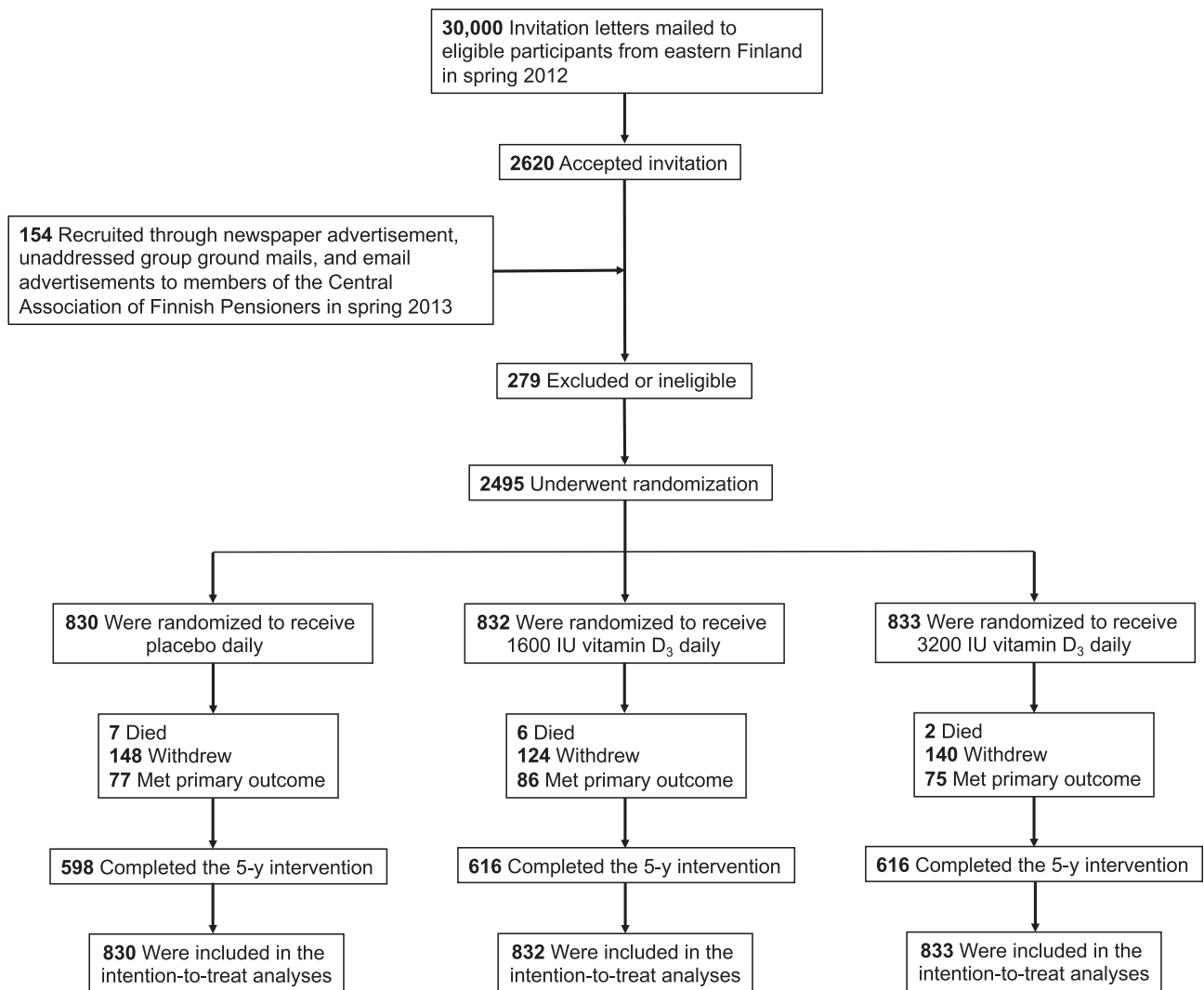


FIGURE 1 Recruitment and randomization of the study participants.

(100 male and 100 female participants from each arm) was invited for more detailed examinations to the University of Eastern Finland's Kuopio campus (latitude 63°N). In total, 307 male and 244 female volunteers took part in the baseline examinations, with slightly lower numbers participating in the follow-up visits after 6, 12, and 24 months (**Supplemental Figure 1**).

The study pills were purchased from Galena Pharma Ltd.

The pills were otherwise identical, but contained either 0, 1600 IU, or 3200 IU of vitamin D₃ per pill. The supplements were in identical containers, with group codes not revealing the intervention printed on the label. Annually, the containers were either mailed to the participants or given at study visits. A double-blind setting was maintained throughout the study.

The participants filled out questionnaires at baseline; after 12, 24, and 36 months; and at the trial's end at 60 months. The questionnaires included detailed questions about sun exposure habits, physical activity, smoking, medication and supplementation use, diseases, fractures and falls, coherence, sleep, mood, mental health, functional capacity, pain, and potential side effects of the supplements during the previous 12 months. BMI was

calculated based on the weight and height reported in the baseline questionnaire. At baseline, at 36 months, and at the trial's end, the questionnaire also included a validated 142-item FFQ. The final questionnaire also included a question of adherence: "how much of the study pills did you take during the study?" The choices ranged from "<50%" to "100% or almost 100%." The participants could choose to complete the questionnaires online or could use a prepaid envelope to mail the questionnaire to the study center.

Serum 25(OH)D₃ concentrations were measured using high-performance liquid chromatography from the samples collected at the baseline and after 6 and 12 months, complemented with direct competitive chemiluminescence immunoassays for samples collected at 5 time points (**Supplemental Methods 1**).

The study was carried out in accordance with The Code of Ethics of the World Medical Association (Declaration of Helsinki). All participants were volunteer adults who were entitled to withdraw from the study at any time without explanation. All participants signed a written informed consent form. The appropriate study approvals were obtained from the

TABLE 1 Baseline characteristics of the participants

Characteristic	Overall (n = 2495)	Placebo arm (n = 830)	Vitamin D ₃ 1600 IU/d arm (n = 832)	Vitamin D ₃ 3200 IU/d arm (n = 833)
Female sex, n (%)	1069 (42.8)	372 (44.8)	349 (41.9)	348 (41.8)
Age, mean (SD), years	68.2 (4.5)	68.2 (4.5)	68.1 (4.5)	68.3 (4.4)
Age group, n (%)				
60–64 years ¹	620 (24.8)	202 (24.3)	209 (25.1)	209 (25.1)
65–69 years	1089 (43.6)	373 (44.9)	358 (43.0)	358 (43.0)
70–74 years	589 (23.6)	186 (22.4)	203 (24.4)	200 (24.0)
≥75 years	197 (7.9)	69 (8.3)	62 (7.5)	66 (7.9)
Employment status, n (%)	n = 2469	n = 823	n = 824	n = 822
Full-time work	201 (8.1)	76 (9.2)	61 (7.4)	64 (7.8)
Part-time work	95 (3.8)	27 (3.3)	38 (4.6)	30 (3.6)
Unemployed	61 (2.5)	14 (1.7)	25 (3.0)	22 (2.7)
Retired	2097 (84.9)	703 (85.4)	692 (84.0)	702 (85.4)
Not working for other reasons	15 (0.6)	3 (0.4)	8 (1.0)	4 (0.5)
Leisure-time physical activity, ² mean (SD), h/week				
Light	13.1 (10.8) (n = 2172)	13.1 (10.9) (n = 712)	13.3 (11.2) (n = 721)	12.8 (10.5) (n = 739)
Heavy	5.7 (6.5) (n = 1601)	5.6 (6.3) (n = 525)	5.8 (6.6) (n = 532)	5.9 (6.5) (n = 544)
Smoking regularly, ³ n (%)	885 (35.7) (n = 2477)	292 (35.4) (n = 825)	300 (36.5) (n = 823)	293 (35.3) (n = 829)
At least high school diploma, n (%)	417 (16.8) (n = 2483)	135 (16.3) (n = 827)	149 (18.0) (n = 827)	133 (16.0) (n = 829)
Married, n (%)	1849 (74.7) (n = 2476)	620 (75.2) (n = 824)	606 (73.5) (n = 825)	623 (75.3) (n = 827)
BMI, mean (SD), kg/m ²	27.1 (4.3) (n = 2491)	27.2 (4.3) (n = 828)	27.1 (4.3) (n = 832)	26.9 (4.3) (n = 831)
Alcohol intake, mean (SD), g/day	7 (13) (n = 2464)	8 (16) (n = 824)	7 (11) (n = 818)	7 (11) (n = 822)
Vitamin D intake from diet, mean (SD), IU/d	428 (312) (n = 2464)	416 (260) (n = 824)	456 (384) (n = 818)	420 (280) (n = 822)
The major vitamin D sources in diet				
Liquid dairy products, mean (SD), g/d	488 (409)	473 (387)	518 (413)	474 (426)
Fish, mean (SD), g/d	76 (96)	71 (74)	83 (132)	72 (71)
Vegetable fat spreads, mean (SD), g/d	13 (9)	12 (9)	13 (9)	13 (9)
Use of own vitamin D supplements, n (%)				
Not at all	1670 (66.9)	535 (64.5)	566 (68.0)	569 (68.3)
200–400 IU/day	361 (14.5)	133 (16.0)	104 (12.5)	124 (14.9)
>400 to <800 IU/day	74 (3.0)	27 (3.3)	26 (3.1)	21 (2.5)
800 IU/day	390 (15.6)	135 (16.3)	136 (16.3)	119 (14.3)
Calcium intake from diet, mean (SD), mg/d	1369 (739) (n = 2463)	1344 (708) (n = 824)	1413 (735) (n = 817)	1350 (772) (n = 822)
Daily calcium supplement use, n (%)	381 (16.0) (n = 2387)	143 (18.1) (n = 792)	112 (14.1) (n = 792)	126 (15.7) (n = 803)
Daily medication use, n (%)	1736 (70.1) (n = 2476)	597 (72.3) (n = 826)	559 (67.9) (n = 823)	580 (70.1) (n = 827)
Hypertension medication, n (%)	1047 (42.3) (n = 2476)	353 (42.7) (n = 826)	344 (41.8) (n = 823)	350 (42.3) (n = 827)
Antiarrhythmic medication, n (%)	122 (4.9) (n = 2476)	45 (5.4) (n = 826)	48 (5.8) (n = 823)	29 (3.5) (n = 827)
Statin medication, n (%)	717 (29.0) (n = 2476)	255 (30.9) (n = 826)	218 (26.5) (n = 823)	244 (29.5) (n = 827)
Diabetes medication, n (%)	222 (9.0) (n = 2476)	68 (8.2) (n = 826)	89 (10.8) (n = 823)	65 (7.9) (n = 827)
Self-rated health good or excellent, n (%)	1460 (59.2) (n = 2467)	460 (56.0) (n = 822)	493 (60.3) (n = 818)	507 (61.3) (n = 827)
Vacation in a sunny place during previous 12 months, n (%)	663 (26.6) (n = 2490)	210 (25.4) (n = 828)	225 (27.1) (n = 830)	228 (n = 27.4) (n = 832)
Use of sunscreen in the summertime, n (%)	581 (23.4) (n = 2488)	183 (22.1) (n = 828)	199 (24.0) (n = 828)	199 (23.9) (n = 832)

¹All participants in this age group are men.²Light activity was defined as gardening and other light outdoor activities, while heavy activity was defined as physical exercise that causes sweating or heavy breathing.³Smoking regularly was defined as smoking almost every day during the last year.

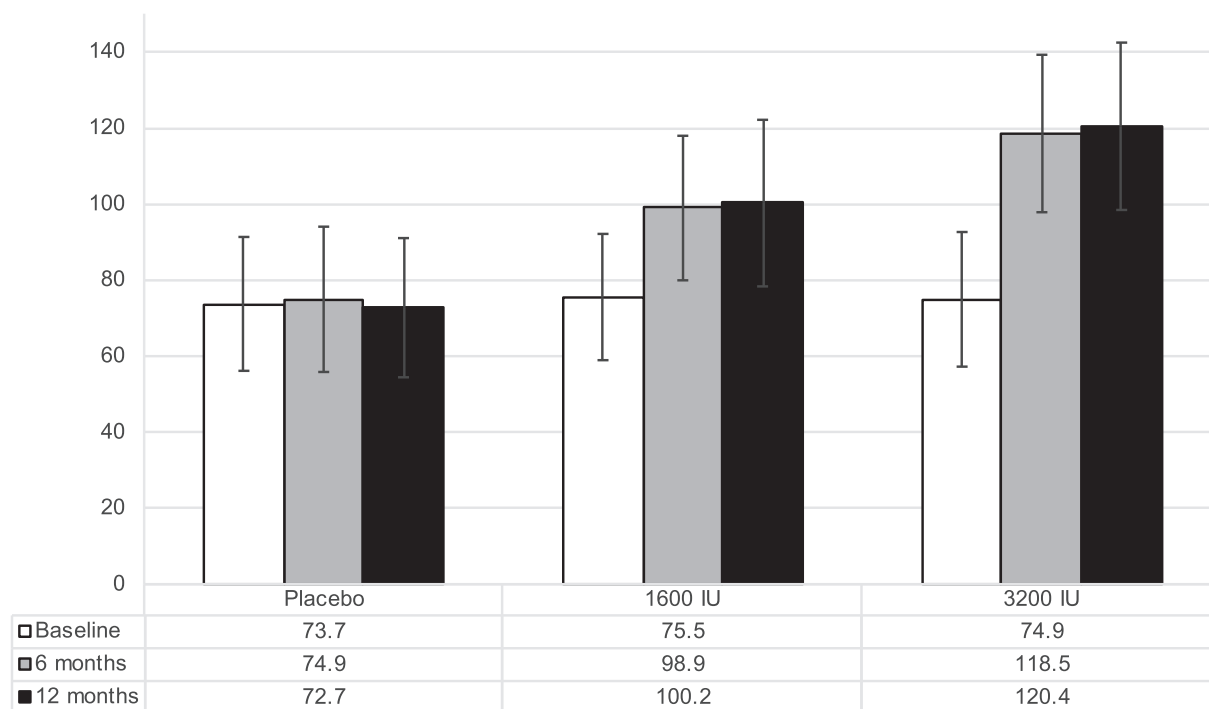


FIGURE 2 Serum 25-hydroxyvitamin D concentration at baseline and after 6 and 12 months in the placebo, 1600 IU/day and 3200 IU/day vitamin D₃ arms among the 503 participants with data from all 3 study visits. The values are shown in nmol/L. To convert to ng/mL, divide by 2.5.

ethics committee of the Kuopio University Hospital (#30/2010) and from the National Institute for Health and Welfare, which administers the health registries.

Endpoint assessment

Morbidity and mortality data were obtained by linkages to the national registries. The National Death Registry, in collaboration with Statistics Finland (license TK-53-507-20), was used for the mortality data. The Care Registers for Social Welfare and Health Care, including inpatient care (HILMO) and outpatient visits (AvoHILMO), governed by the National Institute for Health and Welfare (license THL/523/5.05.00/2020), were used to collect data on diseases diagnosed during the follow-up. Validation of CVD and cancer endpoints is described in the registries' websites (16–18). There were no losses to follow-up.

The prespecified primary endpoints were any invasive cancer (International Classification of Diseases Tenth Edition codes C00–97, excluding nonmelanoma skin cancer C44) and a major CVD event [composite endpoint of myocardial infarction (I21–23), stroke (I60–64) and CVD mortality (I00–99)]. The secondary endpoints were 1) an expanded composite CVD endpoint of myocardial infarction, stroke, CVD mortality, and coronary revascularization [i.e., coronary artery bypass grafting (Z95.1) or percutaneous coronary intervention (Z95.5)], and 2) the individual components of the primary CVD endpoint, particularly total CVD mortality, 3) incident colorectal cancer (C18–20), 4) incident breast cancer (C50) in women, 5) incident prostate cancer (C61) in men, and 6) total cancer mortality (C00–97).

Statistical Analysis

The study was designed to have >80% statistical power to detect a 25% decrease in CVD and cancer events in the high-dose supplementation arm compared to the placebo arm. The sample size calculations were based on numbers of CVD deaths and cancer events in the Finnish population ≥60 years, using data provided by Statistics Finland (19) and the Finnish Cancer Registry (20). With respect to a 5-year cumulative reduction in incidence rates, the required sample size per arm was 2572 to cover both CVD deaths and cancer events (**Supplemental Methods 2**). To be prepared for dropouts and noncompliance, the sample size was set to 6000 per arm.

A Cox proportional-hazards model was used to predict hazards of endpoints in the 3 arms. Because of the low number of events, in the post hoc analyses we also analyzed the effects after combining the 2 vitamin D arms. The validity of the proportional hazards assumption was evaluated using Schoenfeld residuals. Participants contributed follow-up time from randomization until the endpoint, death, end of the 5-year follow-up, or withdrawing from the study due to personal reasons ($n = 412$). The models were adjusted for age and sex. To detect trends in the hazards with respect to the intervention, we computed the log-rank test for trend applying the “survMisc” package (<https://cran.r-project.org/web/packages/survMisc/index.html>) for the R language. Statistical significance of the interactions with age, sex, and BMI were assessed by adding interaction terms in Cox regressions. Due to a low number of events, the interaction analyses were done only with the primary study endpoints of major cardiovascular event and any cancer. A *t*-test, Mann-Whitney U test, and Pearson's chi-squared test were used to test differences in baseline characteristics between the subcohort of 551 participants

TABLE 2 Primary and secondary endpoints according to randomization arm¹

Event	Placebo (n = 830)	1600 IU/day (n = 832)	P value	3200 IU/day (n = 833)	P value	P value for trend	Combined Vitamin D Arms vs. Placebo	P value
PY, n	3480.0	3558.2		3538.4			—	
Primary endpoint: major cardiovascular event ²								
Events, n	41	42		36			—	
Rate per 100 PY (95% CI)	1.18 (0.87–1.60)	1.18 (0.87–1.59)		1.02 (0.74–1.41)			—	
HR (95% CI)	1	0.97 (0.63–1.49)	0.89	0.84 (0.54–1.31)	0.44	0.53	0.90 (0.62–1.32)	0.60
Expanded major cardiovascular event endpoint ³								
Events, n	43	43		37			—	
Rate per 100 PY (95% CI)	1.24 (0.92–1.66)	1.21 (0.90–1.63)		1.05 (0.76–1.44)			—	
HR (95% CI)	1	0.95 (0.62–1.44)	0.80	0.82 (0.53–1.27)	0.37	0.46	0.88 (0.61–1.28)	0.51
Myocardial infarction								
Events, n	18	18		20			—	
Rate per 100 PY (95% CI)	0.52 (0.33–0.82)	0.51 (0.32–0.80)		0.57 (0.37–0.88)			—	
HR (95% CI)	1	0.92 (0.48–1.77)	0.80	1.04 (0.55–1.96)	0.92	0.78	0.98 (0.56–1.71)	0.94
Stroke								
Events, n	18	20		16			—	
Rate per 100 PY (95% CI)	0.52 (0.33–0.82)	0.56 (0.36–0.87)		0.45 (0.28–0.74)			—	
HR (95% CI)	1	1.08 (0.57–2.05)	0.81	0.87 (0.44–1.70)	0.68	0.70	0.97 (0.55–1.72)	0.93
Cardiovascular disease death								
Events, n	5	5		4			—	
Rate per 100 PY (95% CI)	0.14 (0.06–0.34)	0.14 (0.06–0.34)		0.11 (0.04–0.30)			—	
HR (95% CI)	1	0.94 (0.27–3.24)	0.92	0.76 (0.20–2.83)	0.68	0.73	0.85 (0.28–2.53)	0.77
Primary endpoint: any invasive cancer								
Events, n	41	48		40			—	
Rate per 100 PY (95% CI)	1.18 (0.87–1.60)	1.35 (1.02–1.79)		1.13 (0.83–1.54)			—	
HR (95% CI)	1	1.14 (0.75–1.72)	0.55	0.95 (0.61–1.47)	0.81	0.85	1.04 (0.72–1.51)	0.83
Colorectal cancer								
Events, n	3	4		1			—	
Rate per 100 PY (95% CI)	0.09 (0.03–0.27)	0.11 (0.04–0.30)		0.03 (0.003–0.20)			—	
HR (95% CI)	1	1.28 (0.29–5.74)	0.74	0.32 (0.03–3.11)	0.33	0.37	0.80 (0.19–3.37)	0.80
Breast cancer								
Events, n	6	4		6			—	
Rate per 100 PY (95% CI)	0.17 (0.08–0.38)	0.11 (0.04–0.30)		0.17 (0.08–0.38)			—	
HR (95% CI)	1	0.69 (0.20–2.45)	0.57	1.08 (0.35–3.35)	0.90	0.92	0.88 (0.32–2.43)	0.81
Prostate cancer								
Events, n	13	11		15			—	
Rate per 100 PY (95% CI)	0.37 (0.22–0.64)	0.31 (0.17–0.56)		0.42 (0.26–0.70)			—	
HR (95% CI)	1	0.78 (0.35–1.73)	0.53	1.07 (0.51–2.24)	0.87	0.83	0.92 (0.47–1.79)	0.81
Cancer death								
Events, n	0	0		0			—	
Death from any cause								
Events, n	7	7		5			—	
Rate per 100 PY (95% CI)	0.20 (0.10–0.42)	0.20 (0.09–0.42)		0.14 (0.06–0.34)			—	
HR (95% CI)	1	0.94 (0.33–2.68)	0.91	0.68 (0.22–2.14)	0.68	0.56	0.81 (0.32–2.06)	0.66

(Continued)

TABLE 2 (Continued)

Event	Placebo (n = 830)	1600 IU/day (n = 832)	3200 IU/day (n = 833)	P value	P value for trend	Combined Vitamin D Arms vs. Placebo	P value
Analyses excluding the first 2 years of follow-up							
Major cardiovascular event ²							
Events, n	24	26	19			—	
Rate per 100 PY (95% CI)	0.69 (0.46–1.03)	0.73 (0.50–1.07)	0.50 (0.34–0.84)			—	
HR (95% CI)	1	1.02 (0.58–1.77)	0.76 (0.41–1.38)	0.95	0.42	0.89 (0.54–1.46)	0.64
Any invasive cancer							
Events, n	20	32	26			—	
Rate per 100 PY (95% CI)	0.57 (0.37–0.89)	0.90 (0.64–1.27)	0.73 (0.50–1.08)	0.13	0.45	1.40 (0.84–2.32)	0.33
HR (95% CI)	1	1.53 (0.88–2.68)	1.26 (0.70–2.25)	0.44			

¹Adjusted for age and sex in the Cox proportional hazards regression model. Abbreviation: PY, person-years.

²Composite endpoint of myocardial infarction, stroke, and cardiovascular disease mortality.

³Expanded composite endpoint of myocardial infarction, stroke, cardiovascular disease mortality, and coronary revascularization (i.e., coronary artery bypass grafting or percutaneous coronary intervention).

and the 1944 other participants. IBM SPSS Statistics version 25 and R version 3.5.1 (<https://www.R-project.org/>) were used for analyses. A 2-sided *P* value < 0.05 was used to determine statistical significance.

Results

Table 1 shows the baseline characteristics of the participants. The mean age was 68.2 years, and 43% were women. There were no major differences between the 3 arms at baseline. When compared to the other participants, the participants in the subcohort were younger, had a higher education, were more likely to be married, were more likely to use their own vitamin D supplements, and were more likely to rate their health as good or excellent (**Supplemental Table 2**). They also had more often been on vacation in a sunny place during the previous 12 months and more commonly used sunscreen in the summertime.

In the subcohort, the mean \pm SD baseline serum 25(OH)D concentration was 74.8 \pm 18.2 nmol/L (29.9 \pm 7.3 ng/ml), 9.1% had concentrations <50 nmol/L (20 ng/mL), and 50.0% had concentrations \geq 75 nmol/L (30 ng/mL). Among the 503 participants with complete data from the baseline, 6-month, and 12-month study visits, the mean increases in serum 25(OH)D between the baseline and 6-month visit were 23.4 nmol/L (9.4 ng/mL) in the arm receiving 1600 IU/day of vitamin D₃ and 43.6 nmol/L (17.4 ng/mL) in the arm receiving 3200 IU/day, with little additional increase between the 6-month and 12-month visits (**Figure 2**). Few changes were observed in the placebo arm (**Figure 2**). Serum 25(OH)D measurements in the subgroup of 60 participants from 5 time points indicated that the differences between the arms were maintained throughout the study (**Supplemental Figure 2**). The baseline levels were lower among the male participants and those with higher BMIs, but the mean concentrations were over 90 nmol/L (36 ng/mL) in all vitamin D-supplemented arms after 12 months (**Supplemental Figure 3**).

Among the 1609 participants who completed the last questionnaire, 74.8% reported using all study pills during the study and 95.3% reported using \geq 80% of the pills. The proportions were similar in the 3 arms (e.g., 95.0%, 95.7%, and 95.1% reported using \geq 80% of the pills in the placebo, 1600 IU/day, and 3200 IU/day arms, respectively; *P* = 0.97).

The proportion of users of the maximum allowed personal vitamin D dose (800 IU/day) increased in all arms during the trial, but most participants reported using no personal vitamin D supplements (**Supplemental Figure 4**).

Cardiovascular disease

During the mean follow-up of 4.3 years (SD, 1.4 years; median, 5.0 years; minimum, 22 days; maximum, 5.0 years), 119 participants were diagnosed with a major cardiovascular event. There were no statistically significant differences in the event rates between the placebo arm and the 2 vitamin D arms (**Table 2**; **Figure 3**). There were no statistically significant differences in the event rates of the secondary outcomes of myocardial infarction, stroke, or CVD death or in the major

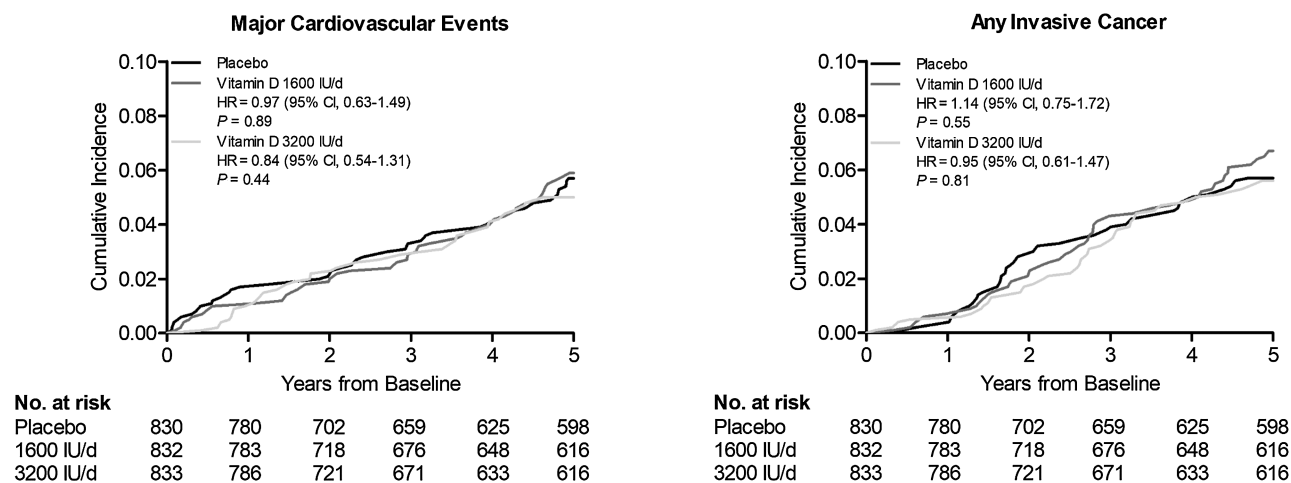


FIGURE 3 Cumulative incidence rates of major cardiovascular events and invasive cancer of any type, according to year of follow-up, in the placebo arm, 1600 IU/day vitamin D₃ arm, and 3200 IU/day vitamin D₃ arm. HR values are from Cox proportional hazards regression models adjusted for age and sex.

cardiovascular events after excluding the first 2 years of follow-up (Table 2). In the analyses stratified by age, sex, and BMI, vitamin D supplementation seemed to increase the incidence of major cardiovascular events among those with lower BMIs and decrease the incidence among those with higher BMIs (Table 3). Although the nominal *P* value for interaction was statistically significant also for the analyses with sex, the difference in the HRs was observed only in the 1600 IU/day vitamin D group, with a higher event rate in women and a lower event rate in men (Table 3). Age did not modify the associations (Table 3).

Cancer

During the follow-up, 129 participants were diagnosed with cancer, with no statistically significant differences between the arms in the event rates in any invasive cancer or in the secondary endpoints of colorectal, breast, or prostate cancer (Table 2; Figure 3). Excluding the first 2 years of follow-up did not alter the finding for any invasive cancer (Table 2). During the follow-up, 11, 14, and 10 participants died due to cancer in the placebo, 1600 IU/day, and 3200 IU/day vitamin D₃ arms, respectively, but these were not first incident events (Table 2). Neither age, sex, nor BMI modified the effects (Table 3).

All-cause mortality and adverse effects

In total, 19 participants had death as the first incident event, without statistically significant differences in the event rates between the 3 arms (Table 2). There were 0, 1, and 1 cases of hypercalcemia and 7, 3, and 6 cases of urinary tract stones in the placebo, 1600 IU/day, and 3200 IU/day vitamin D₃ arms, respectively (age- and sex-adjusted *P* values > 0.18).

Discussion

In this population-based RCT among elderly male and female participants, vitamin D₃ supplementation with doses of

1600 IU/day or 3200 IU/day for a mean of 4.3 years did not reduce the incidences of CVD, invasive cancer, death, or any prespecified individual CVD or cancer endpoints. Vitamin D doses also appeared safe, as the rates of adverse effects did not differ between the arms.

The lack of benefit on CVD outcomes and mortality is in line with the previous primary prevention trials. In the VITAL study, daily vitamin D₃ supplementation did not reduce incidences of major CVD events, any of the individual CVD outcomes, or total mortality when compared to the placebo group (Supplemental Table 1) (10). A similar lack of benefit was observed with monthly vitamin D₃ supplementation in the ViDA study (Supplemental Table 1) (11). A recent meta-analysis summarized the results from 21 trials and concluded that vitamin D supplementation does not reduce overall CVD events; individual CVD outcomes of myocardial infarction, stroke, or CVD mortality; or all-cause mortality (21). Only 4 trials had CVD as a prespecified primary study outcome, with no benefit observed (10, 11, 22, 23). Additionally, there were no significant effects in the sensitivity analyses based on, for example, sex, baseline 25(OH)D level, BMI, vitamin D dosage, daily compared with bolus dosing, concurrent use of calcium supplements, or inclusion of only postmenopausal female participants (21). Age seemed to modify the effects, as a reduced major CVD event rate was observed among older participants, but, as the authors of that study state, this finding should be interpreted cautiously because they did not control for multiple comparisons (21). In our study, sex and BMI, but not age, appeared to modify the effects of vitamin D on major CVD events. However, given the low number of events in these stratified analyses and that none of the *P* values would be considered statistically significant after correction for multiple comparisons, these findings need to be interpreted cautiously.

A recent meta-analysis reported that vitamin D supplementation did not reduce the total cancer incidence overall or in analyses stratified by several potential modifying factors (24), and our findings are in line with that observation. However, the meta-analysis did find that vitamin D supplementation decreased the incidence of cancer death (24). This was also observed in the

TABLE 3 HRs and 95% CIs for the primary endpoints according to subgroup and randomization arm¹

Endpoint	Number of participants	Placebo	1600 IU/day	3200 IU/day	<i>P</i> value for trend	<i>P</i> value for interaction
Major cardiovascular event ²						
Men (events, <i>n</i>)	1426	34	26	30		0.02
		1	0.70 (0.42–1.16)	0.81 (0.50–1.33)	0.43	
Women (events, <i>n</i>)	1069	7	16	6		
		1	2.44 (1.00–5.93)	0.91 (0.30–2.69)	0.92	
Age < median 67.4 year (events, <i>n</i>)	1247	25	16	20		0.27
		1	0.64 (0.34–1.19)	0.80 (0.45–1.45)	0.47	
Age ≥ median 67.4 year (events, <i>n</i>)	1248	16	26	16		
		1	1.49 (0.80–2.78)	0.92 (0.46–1.84)	0.87	
BMI < median 26.4 kg/m ² (events, <i>n</i>)	1250	9	20	23		0.003
		1	2.07 (0.94–4.55)	2.28 (1.05–4.92)	0.04	
BMI ≥ median 26.4 kg/m ² (events, <i>n</i>)	1245	32	22	13		
		1	0.66 (0.38–1.14)	0.41 (0.22–0.79)	0.01	
BMI <25 kg/m ² (events, <i>n</i>)	850	6	13	12		0.09
		1	1.93 (0.73–5.08)	1.60 (0.60–4.25)	0.39	
BMI 25–30 kg/m ² (events, <i>n</i>)	1136	22	24	22		
		1	1.02 (0.57–1.82)	1.01 (0.56–1.83)	0.81	
BMI ≥30 kg/m ² (events, <i>n</i>)	509	13	5	2		
		1	0.43 (0.15–1.21)	0.19 (0.04–0.82)	0.004	
Any cancer						
Men (events, <i>n</i>)	1426	37	38	33		0.38
		1	0.92 (0.59–1.45)	0.82 (0.51–1.31)	0.42	
Women (events, <i>n</i>)	1069	25	33	29		
		1	1.44 (0.86–2.42)	1.24 (0.73–2.12)	0.42	
Age < median 67.4 year (events, <i>n</i>)	1247	28	29	24		0.98
		1	1.02 (0.61–1.71)	0.88 (0.51–1.51)	0.63	
Age ≥ median 67.4 year (events, <i>n</i>)	1248	34	42	38		
		1	1.20 (0.76–1.89)	1.07 (0.68–1.71)	0.80	
BMI < median 26.4 kg/m ² (events, <i>n</i>)	1250	38	35	35		0.33
		1	0.89 (0.57–1.42)	0.84 (0.53–1.33)	0.47	
BMI ≥ median 26.4 kg/m ² (events, <i>n</i>)	1245	24	36	27		
		1	1.49 (0.89–2.49)	1.19 (0.69–2.07)	0.53	
BMI <25 kg/m ² (events, <i>n</i>)	850	24	19	26		0.39
		1	0.72 (0.39–1.31)	0.88 (0.51–1.53)	0.71	
BMI 25–30 kg/m ² (events, <i>n</i>)	1136	28	37	28		
		1	1.36 (0.83–2.23)	1.14 (0.67–1.93)	0.76	
BMI ≥30 kg/m ² (events, <i>n</i>)	509	10	15	8		
		1	1.61 (0.72–3.59)	0.91 (0.36–2.32)	0.84	

¹Adjusted for age and sex in the Cox proportional hazards regression model.

²Composite endpoint of myocardial infarction, stroke, and cardiovascular disease mortality.

VITAL study, which found a 25% lower risk of death from cancer in the analyses that excluded the first 2 years of follow-up (12). We were not able to investigate this outcome, because there were no cancer deaths as the first incident event. Also, the numbers of prespecified secondary cancer outcomes—colorectal, breast and prostate cancer—were very low, but the lack of an effect on these outcomes agrees with the findings in other trials (10, 25, 26).

A strength of our study was the use of 2 vitamin D doses, which enabled an investigation of dose-response. There were clear and sustained differences in the serum 25(OH)D concentrations between the arms, with the achieved mean level of 120 nmol/L (48 ng/mL) in the 3200 IU/day arm being close to the upper limit of 125–150 nmol/L (50–60 ng/mL) suggested by the US Institute of Medicine (27). Other strengths include the population-based recruitment method and the use of national health records to collect data on incident events. The extensive data collected with

the study forms during the trial also allow for future investigations of several health outcomes, many of which have limited dose-response data available. Limitations include the much lower than expected recruitment rate and the lower than predicted event rates, which significantly limited the power, and the small number of participants with detailed examinations, which prevented analyses stratified by the baseline serum 25(OH)D concentrations. However, as only 9.1% of the subcohort had insufficient concentrations, we most likely would not have had enough power for these analyses in the whole population. The rather high baseline 25(OH)D concentrations most likely reflect the national food fortification policies implemented in 2003 and 2010, which increased the average vitamin D intake in the Finnish population, and the increased use of vitamin D supplements. Between 2000 and 2011, the mean vitamin D intake from diet alone increased from 140 IU/day in men and women to 560 IU/day in men and 480 IU/day in women, with parallel

increases in the mean serum 25(OH)D concentrations, from 48 nmol/L to 65 nmol/L (from 19 to 26 ng/mL) (28). Because of the location of Finland in the northern hemisphere, cutaneous vitamin D production is limited to the few summer months. Because most of the participants gave blood samples outside the summer months, vitamin D production in the skin is an unlikely explanation for the high baseline 25(OH)D concentrations. The low response rate to the study invitation raises the possibility of selection bias; in other words, the vitamin D status of the FIND study population may not reflect the general elderly population in Finland. However, although comparison of the serum 25(OH)D concentrations between studies is somewhat problematic due to the lack of a standardized serum vitamin D assay method and differing methods for estimating dietary intakes, the mean serum 25(OH)D concentration and vitamin D intake in our study were generally similar to the population-level estimates (28). The 5-year duration of the study may have been too short to detect effects on incidences of CVD and cancer. However, the follow-up for incident events from the national registries will continue for at least 10 years, so in the future we can investigate potential delayed effects of vitamin D supplementation on disease incidences. Finally, as the study population consisted only of White, Finnish adults with relatively high baseline serum 25(OH)D concentrations, the results may not be generalizable to more ethnically diverse populations or to populations with higher prevalences of vitamin D insufficiency.

In conclusion, vitamin D₃ supplementation with 1600 or 3200 IU/day for 5 years did not reduce the incidences of major CVD events, any invasive cancer, or mortality among generally healthy and mostly vitamin D-sufficient older adults in Finland. As in other similar large trials with mainly null findings, the baseline vitamin D levels have been sufficient in a large majority of the participants (10–12). Future vitamin D supplementation trials should focus on recruiting participants with low vitamin D statuses.

We thank Dr. Tarja Kukkola from the University of Eastern Finland, Institute of Public Health and Clinical Nutrition, for her help in the serum 25-hydroxyvitamin D measurements.

The authors' responsibilities were as follows—JKV, TN, AA, ERB-J, EH, CL-A, HK, JEM, JM, PM, SS, MU, T-PT, and SH: designed the research; JKV, TN, HK, JM, T-PT, and SH: conducted the research; JKV and AV: statistically analyzed data, had full access to all the data, and take responsibility for the integrity of the data and the accuracy of the data analysis; JKV: drafted the manuscript; and all authors: provided critical revision of the manuscript for important intellectual content and read and approved the final manuscript.

Author disclosures: JEM received grants from the National Institutes of Health during the conduct of the study and grants from the National Institutes of Health and from Mars Symbioscience outside the submitted work. EH received grants from the National Health and Medical Research Council, Medical Research Future Fund, Tour de Cure, and Australian Research Council, outside the submitted work. MU received a grant from Orion Corp., outside the submitted work. All other authors report no conflicts of interest.

Data Availability

The data will not be openly available because they contain sensitive personal information of the participants that cannot be completely anonymized. However, the analytical code used for

the current study can be made available upon reasonable request, and the data are open for potential research collaboration by contacting the corresponding author.

References

1. Carlberg C. Genome-wide (over)view on the actions of vitamin D. *Front Physiol* 2014;5:167.
2. Bouillon R, Marcocci C, Carmeliet G, Bikle D, White JH, Dawson-Hughes B, Lips P, Munns CF, Lazaretti-Castro M, Giustina A, et al. Skeletal and extraskelatal actions of vitamin D: current evidence and outstanding questions. *Endocr Rev* 2019;40(4):1109–51.
3. Judd SE, Tangpricha V. Vitamin D deficiency and risk for cardiovascular disease. *Am J Med Sci* 2009;338(1):40–4.
4. Garland CF, Gorham ED, Mohr SB, Garland FC. Vitamin D for cancer prevention: global perspective. *Ann Epidemiol* 2009;19(7):468–83.
5. Manson JE, Bassuk SS. Vitamin D and cardiovascular disease. *Meno Management* 2009;18:28–31.
6. Jackson RD, LaCroix AZ, Gass M, Wallace RB, Robbins J, Lewis CE, Bassford T, Beresford SA, Black HR, Blanchette P, et al. Calcium plus vitamin D supplementation and the risk of fractures. *N Engl J Med* 2006;354(7):669–83.
7. Trivedi DP, Doll R, Khaw KT. Effect of four monthly oral vitamin D₃ (cholecalciferol) supplementation on fractures and mortality in men and women living in the community: randomised double blind controlled trial. *BMJ* 2003;326(7387):469.
8. Autier P, Gandini S. Vitamin D supplementation and total mortality: a meta-analysis of randomized controlled trials. *Arch Intern Med* 2007;167(16):1730–7.
9. Lappe JM, Travers-Gustafson D, Davies KM, Recker RR, Heaney RP. Vitamin D and calcium supplementation reduces cancer risk: results of a randomized trial. *Am J Clin Nutr* 2007;85(6):1586–91.
10. Manson JE, Cook NR, Lee IM, Christen W, Bassuk SS, Mora S, Gibson H, Gordon D, Copeland T, D'Agostino D, et al. Vitamin D supplements and prevention of cancer and cardiovascular disease. *N Engl J Med* 2019;380(1):33–44.
11. Scragg R, Stewart AW, Waayer D, Lawes CMM, Toop L, Sluyter J, Murphy J, Khaw KT, Camargo CA Jr. Effect of monthly high-dose vitamin D supplementation on cardiovascular disease in the Vitamin D Assessment Study: a randomized clinical trial. *JAMA Cardiol* 2017;2(6):608–16.
12. Scragg R, Khaw KT, Toop L, Sluyter J, Lawes CMM, Waayer D, Giovannucci E, Camargo CA Jr. Monthly high-dose vitamin D supplementation and cancer risk: a post hoc analysis of the Vitamin D Assessment randomized clinical trial. *JAMA Oncol* 2018;4(11):e182178.
13. Virtanen JK, Nurmi T, Voutilainen S, Mursu J, Tuomainen TP. Association of serum 25-hydroxyvitamin D with the risk of death in a general older population in Finland. *Eur J Nutr* 2011;50(5):305–12.
14. Hurskainen AR, Virtanen JK, Tuomainen TP, Nurmi T, Voutilainen S. Association of serum 25-hydroxyvitamin d with type 2 diabetes and markers of insulin resistance in a general older population in Finland. *Diabetes Metab Res Rev* 2012;28(5):418–23.
15. Tuomainen TP, Virtanen JK, Voutilainen S, Nurmi T, Mursu J, de Mello VD, Schwab U, Hakumäki M, Pulkki K, Uusitupa M. Glucose metabolism effects of vitamin D in prediabetes: the VitDmet randomized placebo-controlled supplementation study. *J Diabetes Res* 2015; 2015:1.
16. Finnish Cancer Registry. Description of statistics and their quality. Helsinki (Finland): Finnish Cancer Registry; 2021. [Internet]. Available from: <https://cancerregistry.fi/statistics/statistical-descriptions-quality-reports/>.
17. Finnish Institute for Health and Welfare. Description of care register for health care. Helsinki (Finland): Finnish Institute for Health and Welfare; 2021. [Internet]. Available from: <https://thl.fi/en/web/thlfi-en/statistics/information-on-statistics/register-descriptions/care-register-for-health-care>.
18. Finnish Institute for Health And Welfare. Quality description of primary health care statistics. Helsinki (Finland): Finnish Institute for Health And Welfare; 2018. [Internet]. Available from: <https://thl.fi/en/web/thlfi-en/statistics/information-on-statistics/quality-descriptions/primary-health-care>.

19. Official Statistics of Finland. Causes of death. ISSN = 1799-5078. Helsinki (Finland): Statistics Finland; 2021. [Internet]. Available from: http://www.stat.fi/til/ksyyt/index_en.html.
20. Finnish Cancer Registry. Cancer statistics. Helsinki (Finland): Finnish Cancer Registry; 2021. [Internet]. Available from: <https://cancerregistry.fi/statistics/>.
21. Barbarawi M, Kheiri B, Zayed Y, Barbarawi O, Dhillon H, Swaid B, Yelangi A, Sundus S, Bachuwa G, Alkotob ML, et al. Vitamin D supplementation and cardiovascular disease risks in more than 83000 individuals in 21 randomized clinical trials: a meta-analysis. *JAMA Cardiol* 2019;4(8):765–76.
22. J-DAVID Investigators, Shoji T, Inaba M, Fukagawa M, Ando R, Emoto M, Fujii H, Fujimori A, Fukui M, Hase HJ-DAVID Investigators, et al. Effect of oral alfacalcidol on clinical outcomes in patients without secondary hyperparathyroidism receiving maintenance hemodialysis: the J-DAVID randomized clinical trial. *JAMA* 2018;320:2325–34.
23. Zittermann A, Ernst JB, Prokop S, Fuchs U, Dreier J, Kuhn J, Knabbe C, Birschmann I, Schulz U, Berthold HK, et al. Effect of vitamin D on all-cause mortality in heart failure (EVITA): a 3-year randomized clinical trial with 4000 IU vitamin D daily. *Eur Heart J* 2017;38(29):2279–86.
24. Keum N, Lee DH, Greenwood DC, Manson JE, Giovannucci E. Vitamin D supplementation and total cancer incidence and mortality: a meta-analysis of randomized controlled trials. *Ann Oncol* 2019;30(5):733–43.
25. Lappe J, Watson P, Travers-Gustafson D, Recker R, Garland C, Gorham E, Baggerly K, McDonnell SL. Effect of vitamin D and calcium supplementation on cancer incidence in older women: a randomized clinical trial. *JAMA* 2017;317(12):1234–43.
26. Zhou L, Chen B, Sheng L, Turner A. The effect of vitamin D supplementation on the risk of breast cancer: a trial sequential meta-analysis. *Breast Cancer Res Treat* 2020;182(1):1–8.
27. IOM (Institute of Medicine). Dietary Reference Intakes for calcium and vitamin D. Washington (DC): The National Academies Press; 2011.
28. Jääskeläinen T, Itkonen ST, Lundqvist A, Erkkola M, Koskela T, Lakkala K, Dowling KG, Hull GL, Kröger H, Karppinen J, et al. The positive impact of general vitamin D food fortification policy on vitamin D status in a representative adult Finnish population: evidence from an 11-y follow-up based on standardized 25-hydroxyvitamin D data. *Am J Clin Nutr* 2017;105:1512–20.