

## RESEARCH ARTICLE

# The endoplasmic reticulum membrane protein complex localizes to the mitochondrial - endoplasmic reticulum interface and its subunits modulate phospholipid biosynthesis in *Trypanosoma brucei*

Advaita Iyer<sup>1,2</sup>, Moritz Niemann<sup>3\*</sup>, Mauro Serricchio<sup>1</sup>, Caroline E. Dewar<sup>3</sup>, Silke Oeljeklaus<sup>4</sup>, Luce Farine<sup>1</sup>, Bettina Warscheid<sup>4,5</sup>, André Schneider<sup>3\*</sup>, Peter Bütikofer<sup>1\*</sup>

**1** Institute of Biochemistry and Molecular Medicine, University of Bern, Bern, Switzerland, **2** Graduate School for Cellular and Biomedical Sciences, University of Bern, Bern, Switzerland, **3** Department of Chemistry, Biochemistry and Pharmaceutical Sciences, University of Bern, Bern, Switzerland, **4** Biochemistry and Functional Proteomics, Institute of Biology II, Faculty of Biology, University of Freiburg, Freiburg, Germany, **5** Signalling Research Centres BIOS and CIBSS, University of Freiburg, Freiburg, Germany

\* Current address: EMBL Imaging Centre, Heidelberg, Germany  
\* [andre.schneider@unibe.ch](mailto:andre.schneider@unibe.ch) (AS); [peter.buetikofer@ibmm.unibe.ch](mailto:peter.buetikofer@ibmm.unibe.ch) (PB)



## OPEN ACCESS

**Citation:** Iyer A, Niemann M, Serricchio M, Dewar CE, Oeljeklaus S, Farine L, et al. (2022) The endoplasmic reticulum membrane protein complex localizes to the mitochondrial - endoplasmic reticulum interface and its subunits modulate phospholipid biosynthesis in *Trypanosoma brucei*. PLoS Pathog 18(5): e1009717. <https://doi.org/10.1371/journal.ppat.1009717>

**Editor:** Kent L. Hill, University of California, Los Angeles, UNITED STATES

**Received:** June 13, 2021

**Accepted:** April 3, 2022

**Published:** May 2, 2022

**Copyright:** © 2022 Iyer et al. This is an open access article distributed under the terms of the [Creative Commons Attribution License](https://creativecommons.org/licenses/by/4.0/), which permits unrestricted use, distribution, and reproduction in any medium, provided the original author and source are credited.

**Data Availability Statement:** All relevant data are within the manuscript and its [Supporting Information](#) files.

**Funding:** This work was supported by Swiss National Science Foundation grants 169355 (PB) and 175563 (AS), Swiss National Science Foundation NCCR "RNA & Disease" (AS), Deutsche Forschungsgemeinschaft (DFG, German Research Foundation) project ID 403222702/SFB 1381 (BW)

## Abstract

The endoplasmic reticulum membrane complex (EMC) is a versatile complex that plays a key role in membrane protein biogenesis in the ER. Deletion of the complex has wide-ranging consequences including ER stress, disturbance in lipid transport and organelle tethering, among others. Here we report the function and organization of the evolutionarily conserved EMC (TbEMC) in the highly diverged eukaryote, *Trypanosoma brucei*. Using (co-) immunoprecipitation experiments in combination with mass spectrometry and whole cell proteomic analyses of parasites after depletion of select TbEMC subunits, we demonstrate that the TbEMC is composed of 9 subunits that are present in a high molecular mass complex localizing to the mitochondrial-endoplasmic reticulum interface. Knocking out or knocking down of single TbEMC subunits led to growth defects of *T. brucei* procyclic forms in culture. Interestingly, we found that depletion of individual TbEMC subunits lead to disruption of *de novo* synthesis of phosphatidylcholine (PC) or phosphatidylethanolamine (PE), the two most abundant phospholipid classes in *T. brucei*. Downregulation of TbEMC1 or TbEMC3 inhibited formation of PC while depletion of TbEMC8 inhibited PE synthesis, pointing to a role of the TbEMC in phospholipid synthesis. In addition, we found that in TbEMC7 knock-out parasites, TbEMC3 is released from the complex, implying that TbEMC7 is essential for the formation or the maintenance of the TbEMC.

and Germany's Excellence Strategy CIBSS – EXC-2189 – project ID 390939984 (BW). The funders had no role in study design, data collection and analysis, decision to publish, or preparation of the manuscript.

**Competing interests:** The authors have declared that no competing interests exist.

## Author summary

The endoplasmic reticulum membrane complex (EMC) was first reported more than a decade back. Since then, emerging research has indicated that the EMC is involved in insertion of endoplasmic reticulum membrane proteins. Its disruption has diverse effects on cellular functions including protein and lipid synthesis and may contribute to neuro-developmental disorders and cancer. The EMC is highly conserved and has been extensively studied in humans and yeast. Here we use biochemical, microscopy and proteomic analyses to study the EMC (TbEMC) in the unicellular parasite, *Trypanosoma brucei*. We report that the TbEMC forms a complex at the mitochondrial-endoplasmic reticulum interface and regulates the synthesis of the two most abundant membrane phospholipid classes. In addition, our study provides new insights into the localization, complex formation, function and interaction partners of the TbEMC and its subunits. Deciphering the cellular role of the EMC is key to understanding its involvement in disease biology and designing preventive strategies.

## Introduction

The endoplasmic reticulum (ER) is a vast multifarious membrane system that plays a key role in lipid and protein synthesis in a cell. It is known to house many protein complexes that aid its function, including the conserved ER membrane protein complex (EMC) [1]. The EMC was first described more than a decade ago in *Saccharomyces cerevisiae* as a complex composed of 6 proteins [2] and is now believed to contain 8 subunits localizing exclusively to the ER [3]. Since then, EMCs have been identified in every major eukaryotic lineage [1]. The wide distribution of the EMCs and the high degree of sequence conservation between the corresponding subunits of the complex underline their functional importance. Currently, the primary role of the EMC is in protein insertion into the ER membrane. Its depletion causes pleiotropic effects, including ER stress, viral protein destabilization and alterations in lipid transport [2,4–8]. However, many of these effects may ultimately be due to failed insertion of ER membrane proteins.

Early work in *S. cerevisiae* implied that the EMC tethers the ER to the mitochondria [7]. Simultaneous deletion of multiple subunits of the EMC lead to defects in phospholipid trafficking from the ER to the mitochondria, resulting in impaired mitochondrial function [7]. Subsequently, the role of the EMC in phospholipid metabolism has received little additional attention. Instead, more recent studies have focused on the role of the EMC in the biogenesis of multipass membrane proteins [9] and the association of its subunits with cell surface membrane proteins [10–12], indicating that it acts as transmembrane domain (TMD) chaperone [4] or insertase [13]. In mammalian cells, insertion of the ER resident enzyme, squalene synthase, was found to depend on a functional EMC [13] and in reconstitution experiments, a purified 10 component EMC facilitated membrane insertion of squalene synthase and other reporter proteins, indicating that the EMC mediates insertion of proteins with low hydrophobicity [13]. Furthermore, a mass spectrometry (MS)-based proteomic analysis identified a list of EMC subunit-dependent proteins containing TMDs with polar and/or charged residues [14]. In structural studies, the human EMC has been suggested to mediate membrane insertion of proteins containing positively charged amino acids within their TMD [15]. The model implicates EMC3 in the capture and targeting of the substrate to the membrane. Subsequently, substrate insertion may be achieved via a hydrophilic vestibule composed of EMC3 and EMC6, whereby a local thinning of the membrane and a positively charged TMD patch in the

bilayer further assist substrate insertion. The unstable binding of EMC3 and EMC6 with the substrate allows its dissociation from the EMC. Finally, the substrate encounters the luminal EMC1, which has been proposed to act as a recruitment site for chaperones and co-factors involved in protein folding [15].

The EMC's role in membrane protein insertion may also explain, at least in part, its involvement in viral protein expression and replication by interacting with TMDs of viral proteins that are crucial for viral replication, contributing to their stabilization, folding and expression [8]. In human cells, the absence of the EMC caused a subset of membrane proteins to be inaccurately expressed and integrated into membranes, leading to a substantial reduction in infection rate of the viruses [8].

Reconstructions of the human EMC revealed a 10 member complex with a tripartite configuration [15]. Based exclusively in the ER, EMC1, EMC4, EMC7 and EMC10 form an L-shaped luminal region, with EMC2 and EMC8 anchoring a basket shaped cytosolic region and a total of 12 TMDs making up the membrane spanning region in the ER [15]. Additional reports revealed that EMC1, EMC2, EMC3, EMC5 and EMC6 form the core while EMC4, EMC7 and EMC10 constitute peripheral components of the complex [4,16].

Analyses by homology searching algorithms have deduced that the EMC was present in the last eukaryote common ancestor (LECA) [1], making the study of EMCs an interesting pursuit apropos the evolution of ancestral ER proteins. Experimental studies on the EMC have so far been limited to the Opisthokonts [17], except for one report in *Trypanosoma brucei*, which belong to the eukaryotic supergroup of Excavata. The study showed that depletion of EMC2 in *T. brucei* bloodstream forms lead to increased cell doubling time and resistance to isometamidium, berenil, and acriflavine-induced kinetoplast loss [18]. However, the molecular organization of the EMC and its role in *T. brucei* have remained unexplored. Interestingly, among protozoan parasites such as *Giardia intestinalis* and *Trichomonas vaginalis*, trypanosomes are the only organisms displaying a full set of (predicted) EMC subunits [1]. The conserved nature of the EMCs in conjunction with the position of *T. brucei* in the eukaryotic evolutionary tree provides a unique opportunity to study the role of the EMC in a highly diverged eukaryote that is essentially unrelated to Opisthokonts. This may help to reveal its ancestral function(s) in the ER and shed light on the root of its pleiotropy.

*T. brucei* is a eukaryotic protozoan parasite that causes African sleeping sickness in humans and nagana in cattle. Trypanosomes are digenetic parasites and have the ability to metabolically as well as morphologically adapt to vastly different environments in their insect vector and mammalian hosts [19,20]. Unlike mammals and yeast, trypanosomes have a single continuous mitochondrion harboring the mitochondrial genome or kinetoplast DNA [21,22]; its replication is in concert with the nuclear cell cycle, a peculiarity rarely seen in other eukaryotes [23,24]. *T. brucei* parasites are capable of *de novo* lipid synthesis and contain phospholipid compositions similar to other eukaryotes [25,26], with phosphatidylcholine (PC) and phosphatidylethanolamine (PE) representing the two most abundant phospholipid classes [25,27]. In *T. brucei* bloodstream and procyclic forms, PC and PE are synthesized exclusively by the CDP-choline and CDP-ethanolamine, respectively, branches of the Kennedy pathway [25,28–30].

In this study, we use biochemical and microscopic imaging approaches to identify the EMC in *T. brucei* (TbEMC) and to study possible functions of individual TbEMC subunits. Our work reveals that the TbEMC is composed of 9 subunits that are present in a complex localizing to the mitochondrial-ER interface. Interestingly, depletion of individual TbEMC subunits lead to selective disruption of *de novo* formation of PC or PE, re-emphasizing the role of the EMC in phospholipid synthesis.

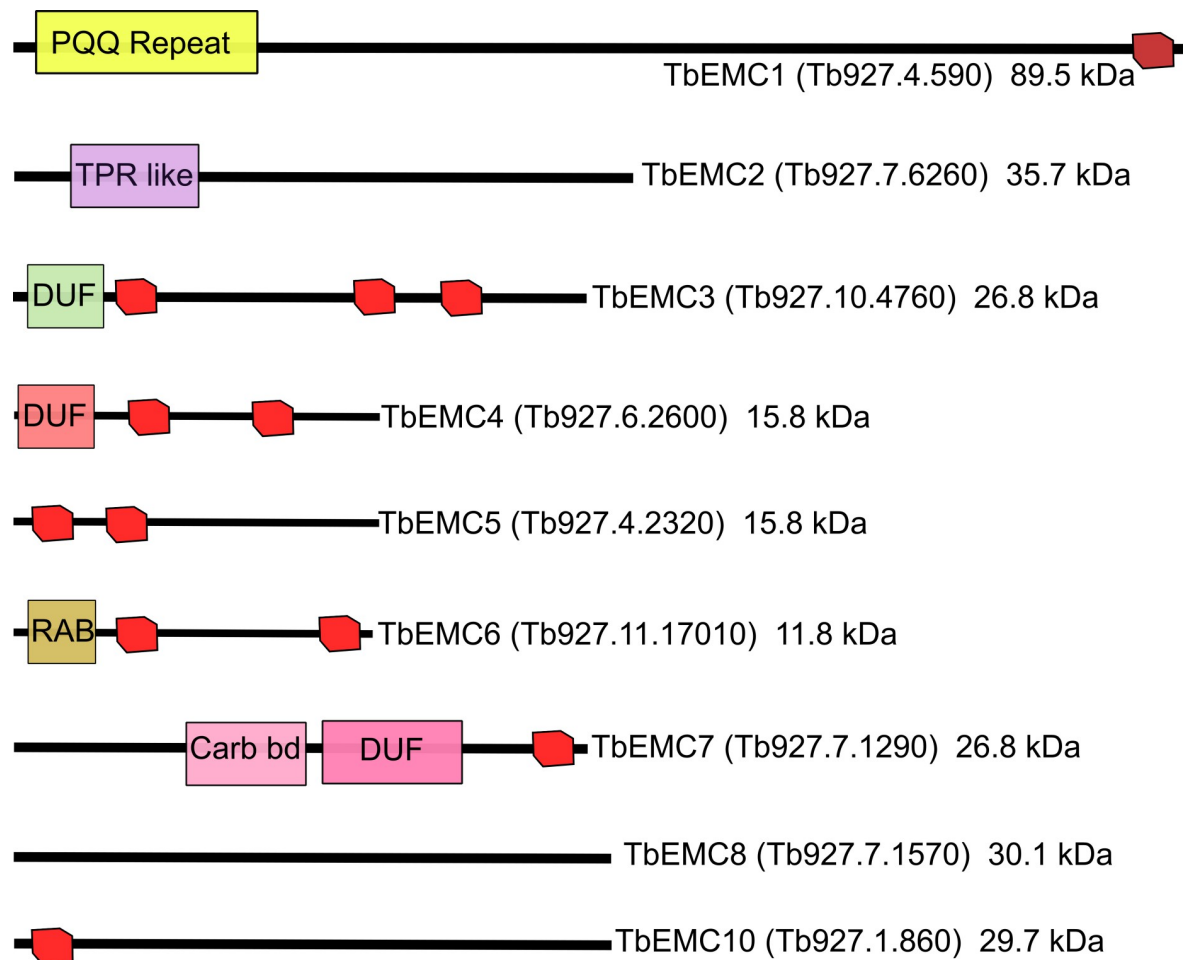
## Results

### BLAST searches reveal homologs of human and yeast EMC subunits in *T. brucei*

By conducting pBLAST searches using the amino acid sequences of the individual members of the human and *S. cerevisiae* EMCs as queries, we identified 9 putative *T. brucei* EMC (TbEMC) proteins, with similarities of 20–40% with the corresponding yeast and human homologs (Fig 1). This is in agreement with a previous phylogenetic analysis of EMC distribution in eukaryotes [1]. All TbEMC subunits except TbEMC2 and TbEMC8 are predicted to contain 1–3 TMDs, similar to their human and *S. cerevisiae* EMC homologs [15,31] (Fig 1), and TbEMC1, TbEMC3, TbEMC5, TbEMC7 and TbEMC10 are predicted to contain two signal peptides each, but according to iPSORT [32] are not targeted to the mitochondrion.

### Depletion of single TbEMC subunits inhibits *T. brucei* proliferation in culture

To study the essentiality of individual TbEMC subunits for the proliferation of *T. brucei* procyclic forms, we attempted to generate *null* mutants using CRISPR/CRISPR-associated protein



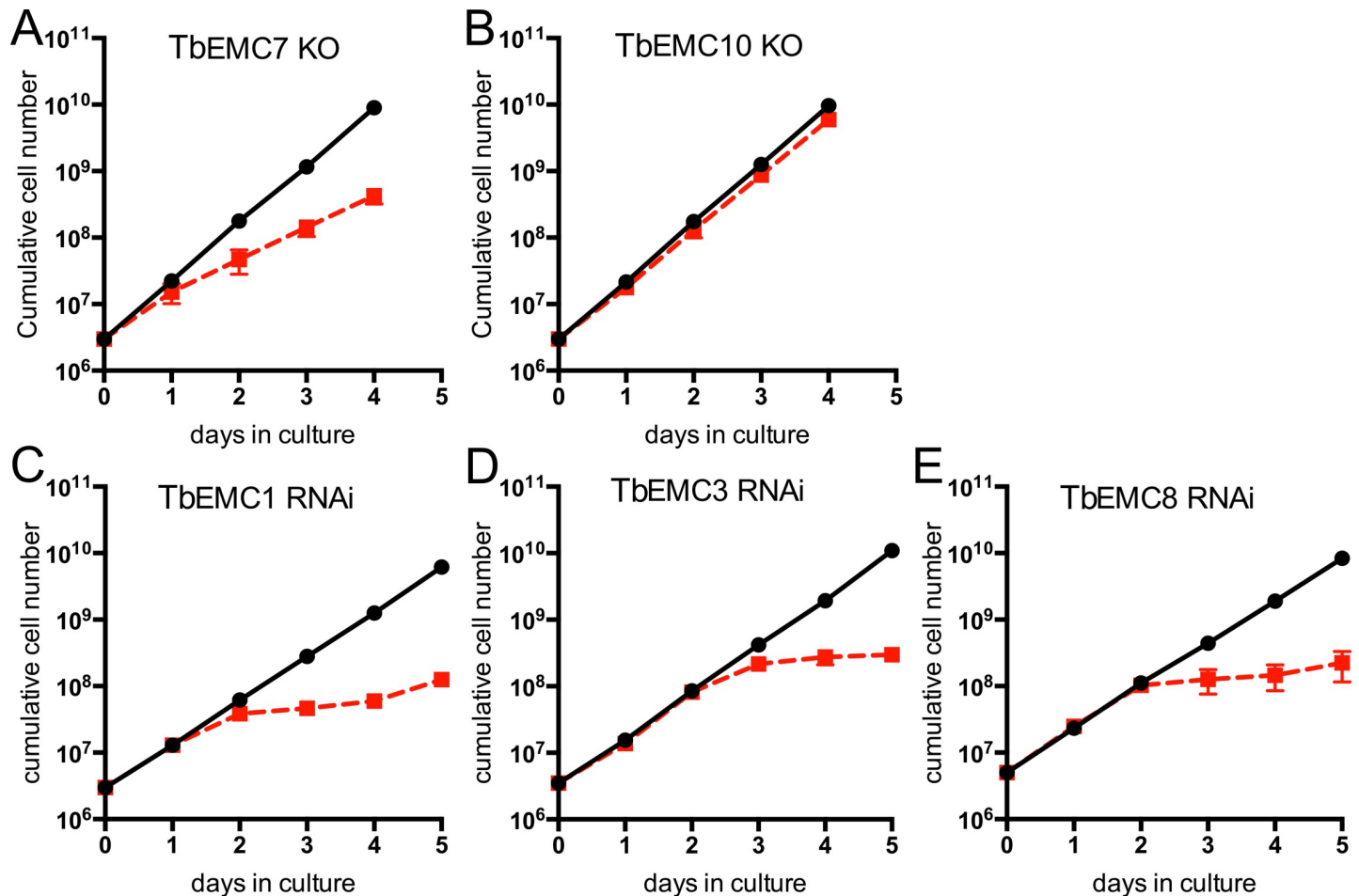
**Fig 1. Predicted domain structure of individual subunits of the TbEMC complex drawn to scale.** Predicted transmembrane domains are indicated in red and unique domains are indicated in colors. PQQ, pyrrolo-quinoline quinone repeat; TPR like, tetratricopeptide-like helical domain; DUFs, domains of unknown function; RAB, Rab5-interacting protein family; Carb bd, carbohydrate-binding like fold.

<https://doi.org/10.1371/journal.ppat.1009717.g001>

9-mediated gene deletion [33]. We successfully generated TbEMC7-knockout (TbEMC7-KO) and TbEMC10-KO cell lines and found that parasite proliferation was decreased after deletion of TbEMC7 (with an increase in cell doubling time from 9.0 h in parental to 12.5 h in TbEMC7-KO parasites) (Fig 2A), but not after deletion of TbEMC10 (Fig 2B). Deletion of the respective genes was verified by PCR (S1 Fig). Attempts to delete the genes encoding TbEMC1, TbEMC3, or TbEMC8 were not successful, which prompted us to down-regulate their expression using tetracycline-inducible RNA interference (RNAi). The results revealed that proliferation of parasites cultured in the presence of tetracycline to ablate TbEMC expression was arrested after approximately 2 days, demonstrating that expression of TbEMC1, TbEMC3 and TbEMC8 is essential for normal proliferation of *T. brucei* procyclic forms in culture (Figs 2C–2E and S2).

### Localization and organization of the TbEMC

To study their subcellular localization, we *in situ*-tagged all 9 TbEMC proteins in separate cell lines using HA (TbEMC1-4) or cMyc (TbEMC5-10) as tags. All TbEMCs were tagged

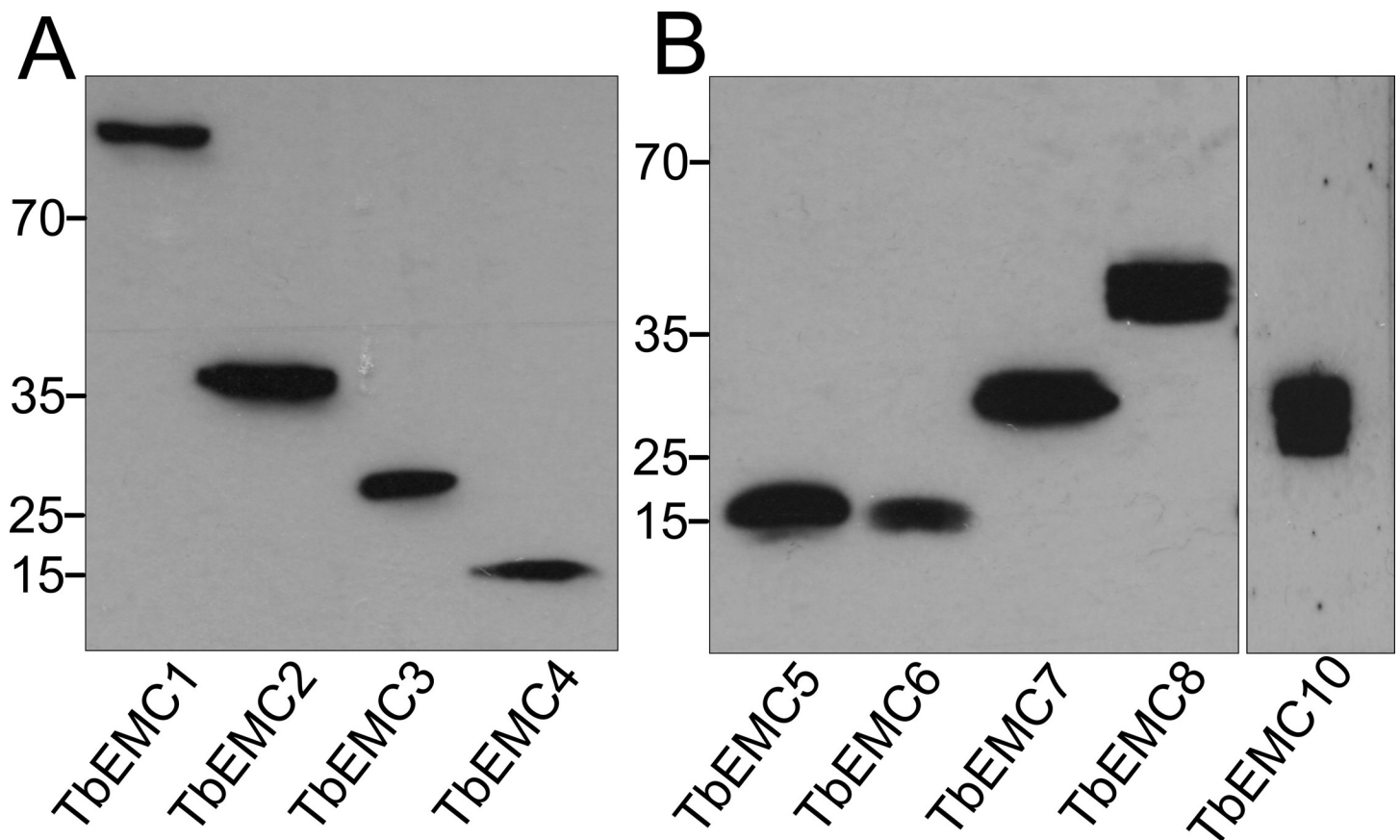


**Fig 2. Growth of *T. brucei* procyclic forms.** A, B. Growth of TbEMC7-KO (A) and TbEMC10-KO (B) parasites (red symbols) was recorded in parallel to growth of parental parasites (black symbols). C-E. Parasites were cultured in the absence (black symbols) or the presence (red symbols) of tetracycline to maintain or ablate, respectively, expression of TbEMC1 (C), TbEMC3 (D) or TbEMC8 (E). All data points represent mean values  $\pm$  standard deviations from 3 independent experiments. For some data points, the size of the symbol is larger than the standard deviation.

<https://doi.org/10.1371/journal.ppat.1009717.g002>

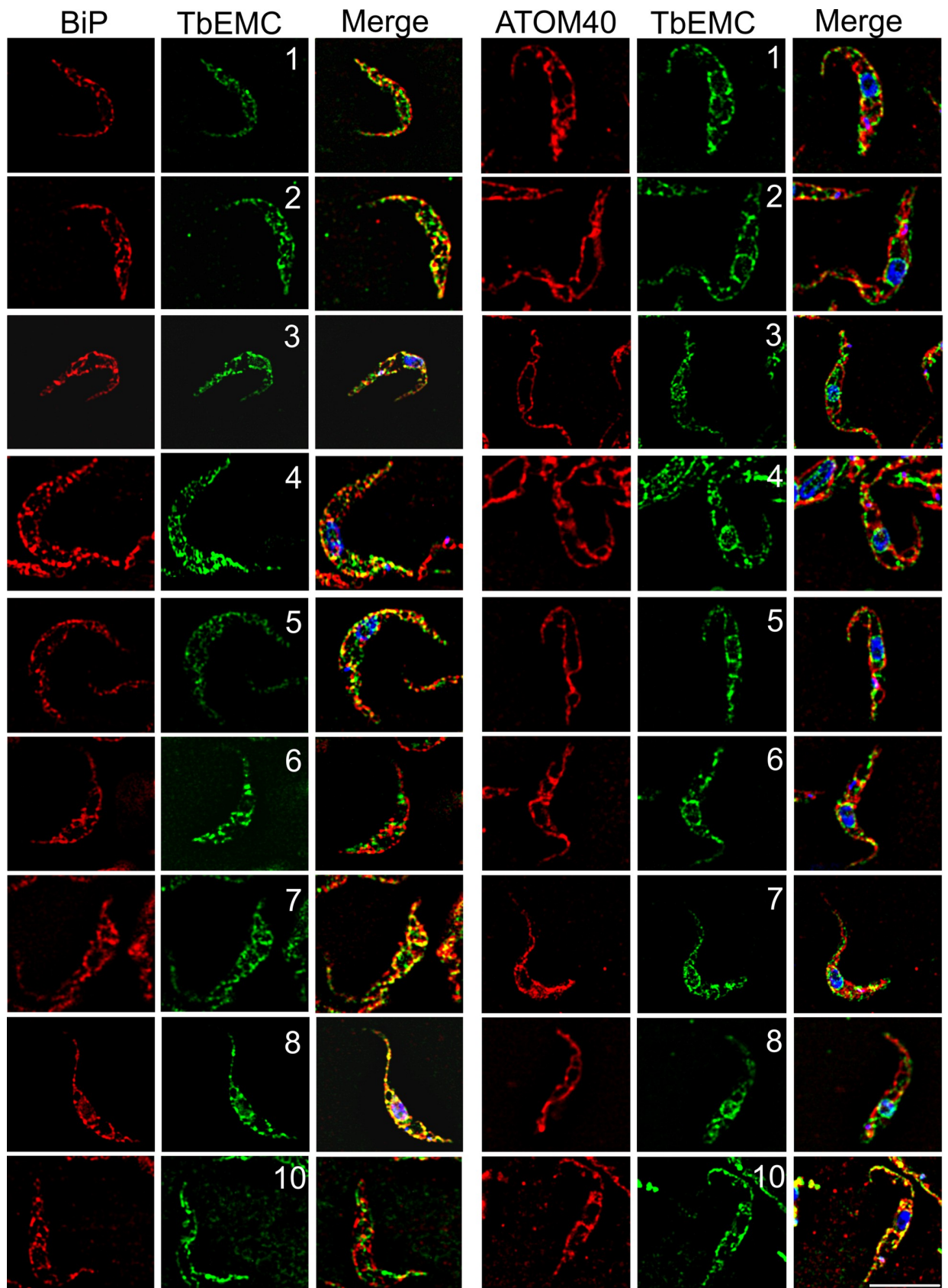
C-terminally except TbEMC6, which was N-terminally tagged; C-terminal tagging of TbEMC6 was repeatedly unsuccessful. Analysis by SDS-PAGE and immunoblotting showed that all TbEMC proteins were expressed and migrated according to their predicted molecular masses (Fig 3A and 3B). TbEMC8 and TbEMC10 consistently appeared as double bands. Analysis by immunofluorescence microscopy revealed that most TbEMC proteins co-localized with the ER luminal marker protein BiP [34], except TbEMC6 and TbEMC10, which exhibited preferential co-localization with ATOM40, the mitochondrial outer membrane protein- and tRNA-translocase in *T. brucei* [35,36] (Fig 4). At present, we cannot exclude that the N-terminal tag of TbEMC6 may affect its subcellular localization.

Most EMC subunits in mammalian cells and *S. cerevisiae* interact with each other [7,37]. To identify possible interactions between individual TbEMCs, we generated *T. brucei* procyclic forms co-expressing HA- and cMyc-tagged TbEMC proteins. We expressed TbEMC5-cMyc in tandem with TbEMC1-HA, TbEMC2-HA, TbEMC3-HA or TbEMC4-HA, and TbEMC3-HA in tandem with TbEMC6-cMyc, TbEMC7-cMyc, TbEMC8-cMyc or TbEMC10-cMyc, with each combination in separate parasites. Co-immunoprecipitation experiments were performed to probe for interactions between individual TbEMC proteins in the double-tagged parasites. Using TbEMC5-cMyc as bait, we were able to pull-down TbEMC1-HA, TbEMC2-HA, TbEMC3-HA and TbEMC4-HA (Fig 5A–5D). In reciprocal co-immunoprecipitation experiments, TbEMC5-cMyc was pulled-down only when using TbEMC2-HA as bait (Fig 5A–5D).



**Fig 3. Expression of in situ-tagged TbEMCs.** Protein extracts from parasites expressing HA-tagged (A) or cMyc-tagged (B) TbEMC proteins were analyzed by SDS-PAGE and immunoblotting using anti-HA (A) or anti-cMyc (B) antibodies, in combination with the corresponding secondary antibodies. Molecular mass markers (in kDa) are indicated in the left margins.

<https://doi.org/10.1371/journal.ppat.1009717.g003>



**Fig 4. Localization of the TbEMCs.** Parasites expressing in situ-tagged TbEMCs were fixed and analyzed by immunofluorescence microscopy using the corresponding first and second antibodies to visualize the TbEMC proteins (in green; middle panels; the numbers refer to the individual TbEMC proteins) and in combination with antibodies against BiP or ATOM40 (in red; left panels). DNA was stained with DAPI in the merge (in blue; right panels). Scale bar = 5  $\mu$ m.

<https://doi.org/10.1371/journal.ppat.1009717.g004>

In addition, when TbEMC3-HA was used as bait, TbEMC7-cMyc, TbEMC8-cMyc and TbEMC10-cMyc co-precipitated. TbEMC3-HA was faintly detected only in a pull-down using TbEMC8-cMyc as bait (Fig 5E–5G). TbEMC6-cMyc was not detected in the TbEMC3-HA or TbEMC8-cMyc precipitates.

Furthermore, using immunofluorescence microscopy, we found high degrees of co-localization between TbEMC5-cMyc and TbEMC1-HA, TbEMC2-HA, TbEMC3-HA and TbEMC4-HA, while TbEMC3-HA and TbEMC8-cMyc showed a weaker co-localization (Fig 5I). No co-localization was seen between TbEMC3-HA and TbEMC10-cMyc (Fig 5I).

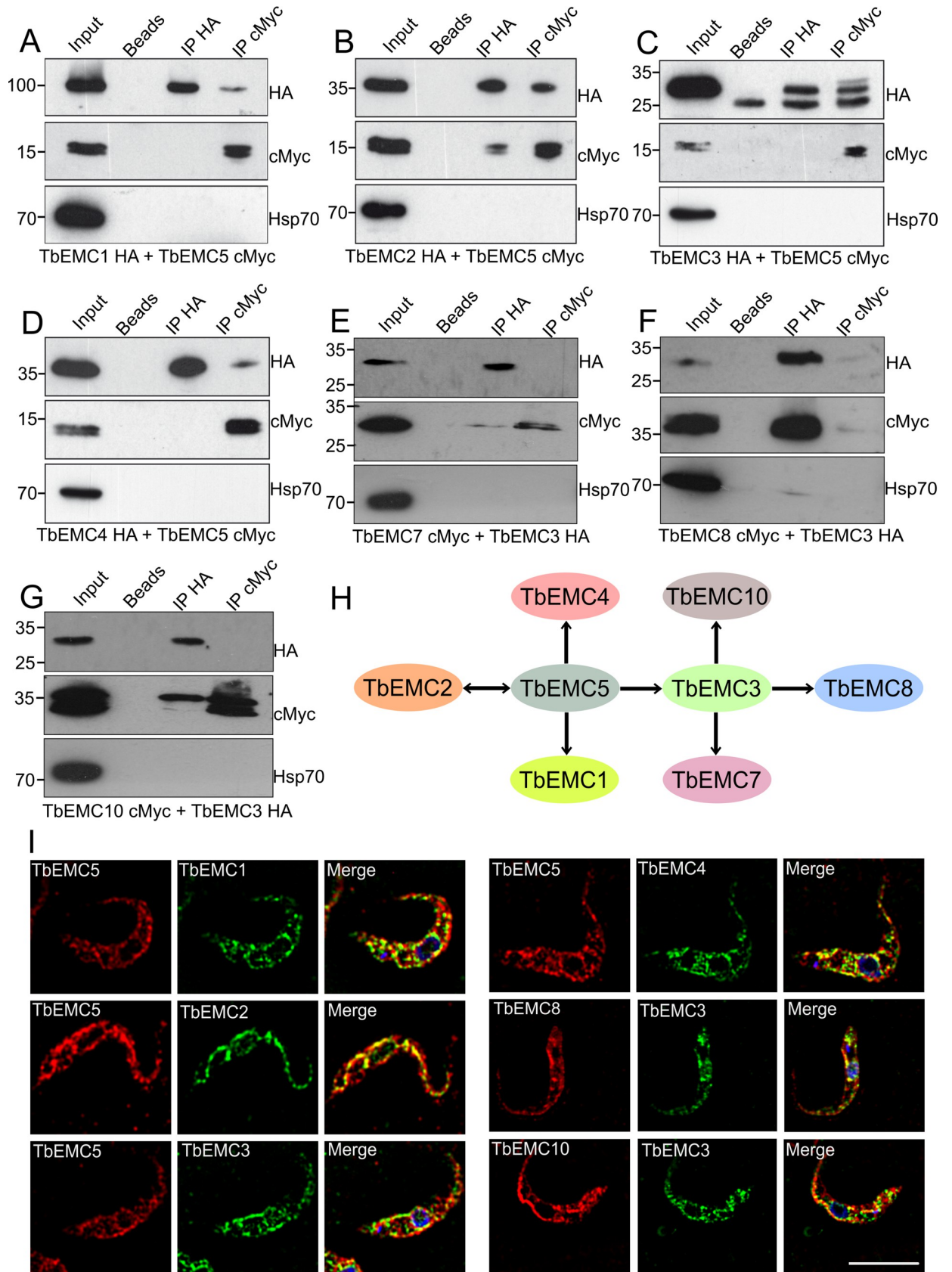
MS analyses of immunoprecipitates of TbEMC3-HA and TbEMC5-cMyc revealed the presence of several TbEMC proteins, further confirming physical interactions between individual subunits of the TbEMC. TbEMC3-HA co-precipitated TbEMC2, TbEMC8 and more than 20 ribosomal proteins of both the large and small ribosome subunits (S3 Table). In addition, the pull-down was also enriched in glycosomal fructose-bisphosphate aldolase (Tb927.10.5620), trypanothione peroxidase (Tb927.9.5860), putative histone H2B (Tb927.10.10590), putative GTP binding nuclear protein RTB2 (Tb927.3.1120), mitochondrial carrier protein MCP12 (Tb927.10.12840) and nuclear RNA binding domain 2 (Tb927.11.14020). Furthermore, immunoprecipitation of TbEMC5-cMyc also co-precipitated several TbEMC subunits, including TbEMC8, TbEMC2, TbEMC3, TbEMC1 and TbEMC4. TbEMC5-cMyc also co-precipitated glycosomal membrane protein GIM5B (Tb927.9.11600) and the same putative GTP binding nuclear protein RTB2 (Tb927.3.1120) that was also pulled down by TbEMC3-HA (S4 Table).

Together, our results show that all subunits of the TbEMC, except TbEMC6, individually interact with one or several other TbEMC proteins. In addition, the data indicates that the TbEMC is composed of TbEMC subunits only, i.e. it likely lacks additional tightly bound interaction partners. Although RTB2 (Tb927.3.1120) co-precipitated with both TbEMC3-HA and TbEMC8-cMyc, it is unlikely a component of the TbEMC as it localizes to the nuclear pore where it was found to mediate nucleocytoplasmic transport; its RNAi-induced depletion affected parasite growth and triggered programmed cell death [38]. Interestingly, the presence of a large number of ribosomal subunits in the TbEMC3-HA precipitate suggests association of the TbEMC with the ribosome. This would be consistent with the notion that the TbEMC might also be involved in co-translational protein insertion, as has been shown for human EMC [39] and some substrates of its bacterial counterpart YidC [40].

### TbEMC subunits form a high molecular mass complex

The yeast and mammalian EMC subunits form a single high molecular mass complex [2,7,16]. To investigate if the individual TbEMC proteins are also members of a complex in *T. brucei*, we performed native polyacrylamide gel electrophoresis (native PAGE) using *T. brucei* procyclic forms expressing the different epitope-tagged TbEMCs. Our results show that all 9 TbEMC proteins migrated as a high molecular mass complex of approximately 480 kDa after native PAGE analyses (Fig 6A and 6B). An unspecific band at approximately 720 kDa appeared in all samples, including untagged parental parasites, when probed with the anti-HA antibody. Together with the TbEMC co-immunoprecipitation studies, these results demonstrate that the TbEMC subunits not only interact with each other but form a single high molecular mass complex.



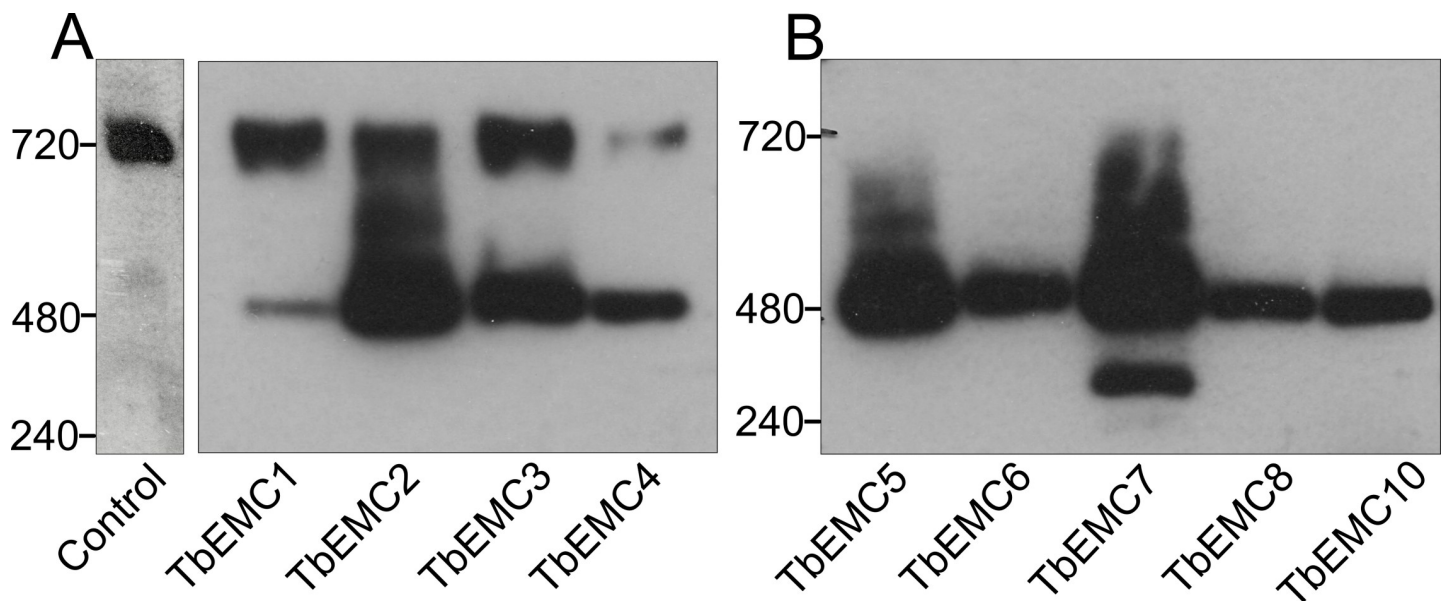


**Fig 5. Interactions between individual TbEMCs.** A–G. Proteins from parasites co-expressing differently tagged TbEMC proteins (indicated below each panel) were immunoprecipitated using TbEMC5-cMyc (A–D) or TbEMC3-HA (E–G) as bait. Proteins from the input (1% of total), washed beads, and both immunoprecipitations (IP; with 3–10% of the sample being applied to detect the bait protein and 90–97% to detect the putative interaction partner) were analyzed by SDS-PAGE and immunoblotting using anti-HA or anti-cMyc antibodies as indicated, in combination with the corresponding second antibodies. Heat shock protein 70 (Hsp70) was used as negative control and visualized by specific antibodies. H. Schematic representation of co-immunoprecipitated TbEMC subunits using TbEMC5 and TbEMC3 as baits. Double headed arrows indicate reciprocal co-immunoprecipitation. I. Parasites co-expressing different pairs of *in situ*-tagged TbEMCs (indicated in the individual panels) were fixed and analyzed by immunofluorescence microscopy using the corresponding first and second antibodies to visualize the two TbEMC proteins (in red for cMyc; in green for HA; left two panels). DNA was stained with DAPI in the merge (in blue; right panels). Scale bar = 5  $\mu$ m.

<https://doi.org/10.1371/journal.ppat.1009717.g005>

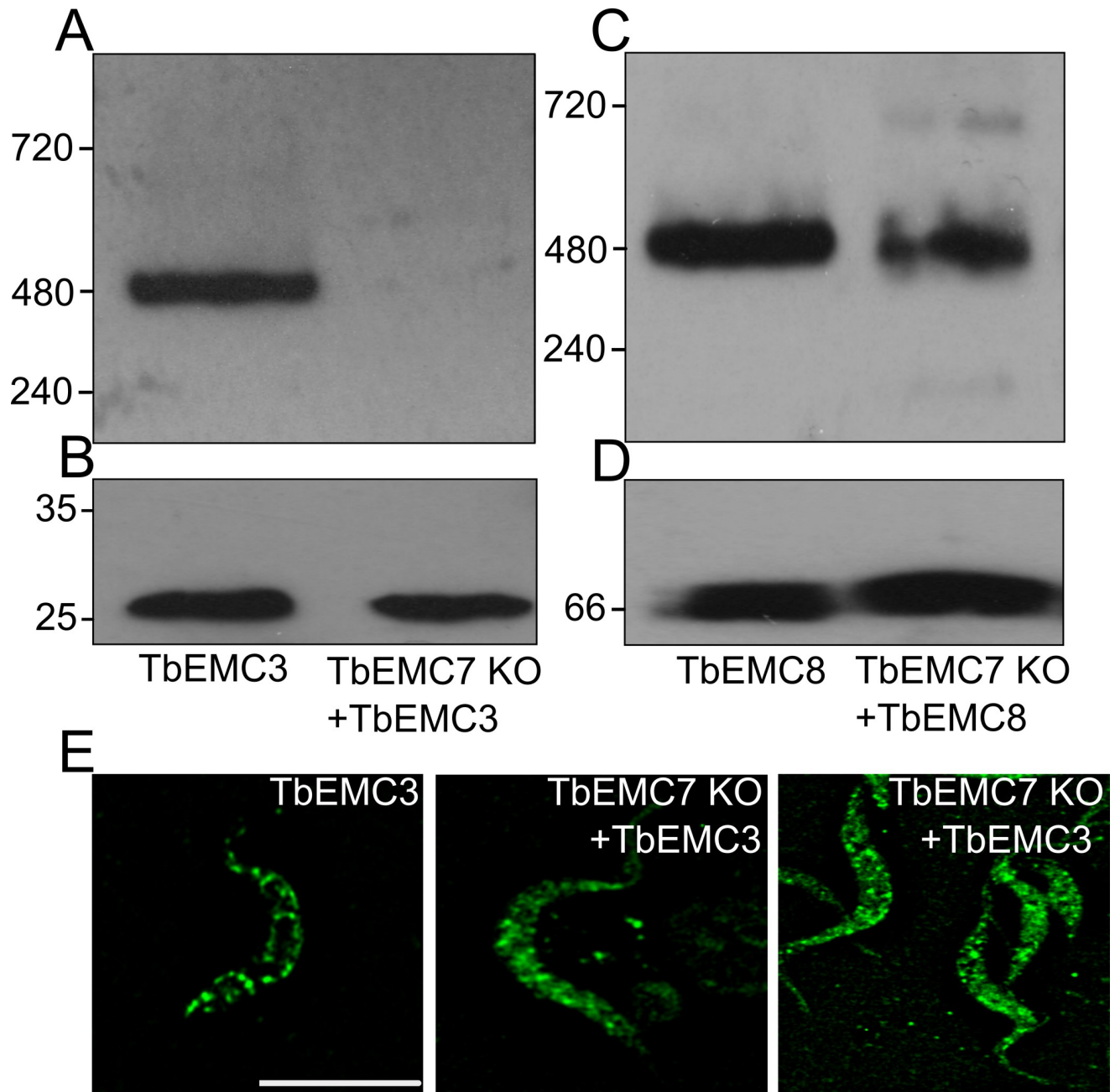
### Depletion of TbEMC7 destabilizes the TbEMC and leads to release of TbEMC3 from the complex

To study if the depletion of an individual subunit affects the integrity and/or stability of the TbEMC, we expressed *in situ*-tagged TbEMC3-cMyc in TbEMC7-KO parasites. Analysis by native PAGE revealed that in the absence of TbEMC7, TbEMC3-cMyc was not detectable (Fig 7A), whereas in control parasites expressing TbEMC3-cMyc, the high molecular mass band at 480 kDa was clearly visible (compare also with Fig 6A, showing parasites expressing TbEMC3-HA). Analysis of the same samples by immunoblotting under denaturing conditions demonstrated that TbEMC3-cMyc was expressed in the TbEMC7-KO background and that its expression level was similar to that in control parasites expressing TbEMC3-cMyc (Fig 7B), ruling out the possibility that TbEMC3-cMyc itself is unstable in parasites lacking TbEMC7. These results suggest that in the absence of TbEMC7, TbEMC3-cMyc no longer associates with the complex and/or that the complex is destabilized. To distinguish between these possibilities, we expressed TbEMC8-cMyc in the TbEMC7-KO background and analyzed the presence of the TbEMC by native PAGE. The results show that in TbEMC7-KO parasites the 480 kDa band was reduced in intensity compared to control parasites (Fig 7C), indicating that in the absence of the TbEMC7 subunit, the TbEMC is not properly formed or is destabilized. In



**Fig 6. Analysis of TbEMC high molecular mass complexes.** A, B. Crude membrane fractions from parasites expressing *in situ*-tagged TbEMC proteins (indicated below the panels), or from parental cells (control) were analyzed by native PAGE and visualized after immunoblotting using anti-HA (A) or anti-cMyc (B) antibodies. Molecular mass markers (in kDa) are indicated in the left margins.

<https://doi.org/10.1371/journal.ppat.1009717.g006>



**Fig 7. Analysis of TbEMC integrity.** A-D. Crude membrane fractions from control cells (A; EMC3; C: EMC8) and TbEMC7-KO parasites (A: EMC7 KO + EMC3; C: EMC7 KO + EMC8) expressing *in situ*-tagged TbEMC3-cMyc or TbEMC8-cMyc, respectively, were analyzed by native PAGE (A, C) and immunoblotting using anti-cMyc antibody and visualized by the corresponding second antibody. The samples were also analyzed by SDS-PAGE and immunoblotting using anti-cMyc antibody (B) or an antibody against *T. brucei* ADP/ATP carrier 1 (AAC1; as loading control) (D) and visualized by the corresponding second antibodies. Molecular mass markers (in kDa) are indicated in the left margins. E. Control cells (EMC3) and TbEMC7-KO parasites (EMC7 KO + EMC3) expressing *in situ*-tagged TbEMC3-cMyc were fixed and analyzed by immunofluorescence microscopy using anti-cMyc antibody and the corresponding second antibody. Scale bar = 5 μm.

<https://doi.org/10.1371/journal.ppat.1009717.g007>

line with these results, immunofluorescence microscopy analysis of TbEMC3-cMyc in TbEMC7-KO parasites revealed a diffuse staining pattern as compared to the punctate staining of TbEMC3-cMyc in control parasites (Fig 7E), indicating that the TbEMC is not properly

assembled. In contrast, in TbEMC10-KO parasites, the migration of TbEMC3-cMyc on native PAGE was unchanged compared to control cells (S3 Fig), indicating that the loss of TbEMC10 does not affect the integrity of the TbEMC.

### The TbEMC localizes to the mitochondrial-ER interface

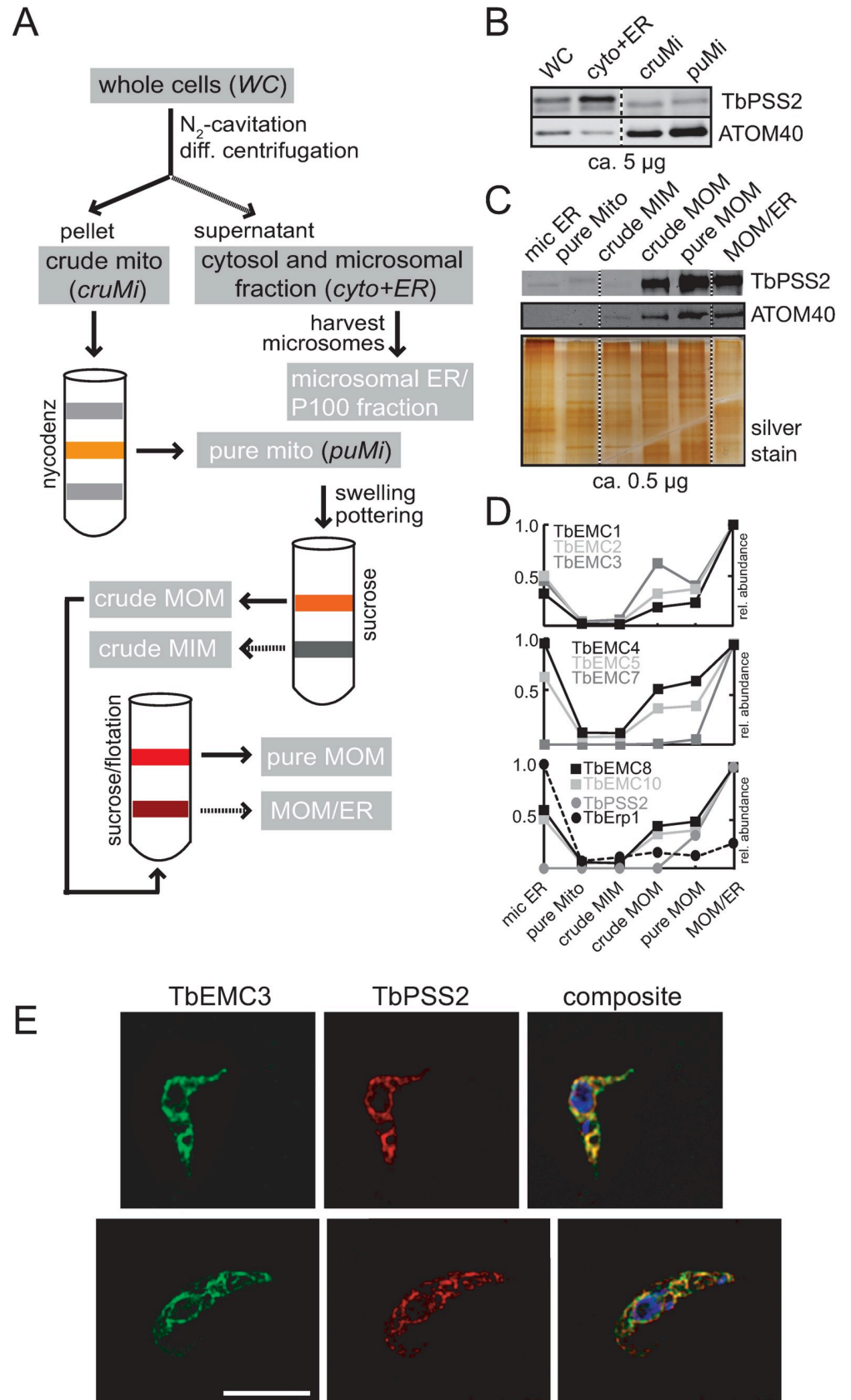
The EMC shows a considerable overlap with the ER and mitochondrion in *T. brucei*, and it is not unreasonable to assume that TbEMC clusters to the mitochondrial-ER interface, with the majority of the TbEMCs localizing to the ER and TbEMC6 and TbEMC10 interacting with the mitochondrial outer membrane (MOM). This would be in agreement with a previous study that implicates the EMC as an ER-mitochondrial tether in *S. cerevisiae* [7]. As conventional immunofluorescence microscopy techniques could not appreciably resolve the MOM and adjacent ER tubules, we wondered if the TbEMC could be traced biochemically to the mitochondrial ER-interface, in a separable membrane fraction termed mitochondria-associated ER membranes [41]. Established markers of these ER-subdomains associated with mitochondria are the phosphatidylserine synthases PSS1 and PSS2 [42,43]. To establish the sub-organellar localization of PSS2 in *T. brucei*, we generated a cell line expressing TbPSS2 (Tb927.7.3760) containing a C-terminal cMyc-tag from an ectopic locus under the control of tetracycline and executed a well-established cell fractionation protocol to generate highly purified mitochondrial vesicles (Fig 8A) [44]. The resultant fractions were analyzed by immunoblotting and probed for cMyc and the MOM marker ATOM40.

Our results show that while the majority of TbPSS2-cMyc is present in a fraction containing microsomal ER vesicles, a significant amount also co-fractionated with two mitochondrial fractions (Fig 8B). Additionally, when we isolated the MOM from the purified mitochondria fraction (employing a previously established procedure [45]), TbPSS2-cMyc and ATOM40 were equally enriched in both the MOM and the fraction containing both MOM and ER proteins (MOM/ER fraction) (Fig 8C). Thus, a fraction of TbPSS2-cMyc—despite being an ER resident protein [46]—stably associated and co-fractionated with the MOM. We next asked if the TbEMC subunits would fractionate in similar fashion to TbPSS2-cMyc, indicative of a common localization at the mitochondrial ER-interface. To investigate this, we re-analyzed the data from our previous study in which the above-mentioned fractions (Fig 8A) had been subjected to MS analyses to obtain protein abundance profiles [45]. We were able to confirm that all TbEMCs, except TbEMC6, were present in the individual fractions, with the protein abundance profiles shown in Fig 8D, including the one for TbPSS2. Interestingly, we found that the protein abundance profiles of the TbEMCs closely matched that of TbPSS2, with maximal intensity in the MOM/ER fraction (Fig 8D), whereas the ER-resident protein TbErp1 [47] shows maximal intensity in the microsomal ER fraction, serving as a negative control. These results are in good agreement with the immunoblot analyses shown in Fig 8C.

Finally, to confirm co-localization of the TbEMCs with TbPSS2 by immunofluorescence microscopy, we generated a cell line co-expressing TbEMC3-HA and TbPSS2-cMyc. Our results show that TbEMC3-HA strongly co-localized with TbPSS2-cMyc (Fig 8E). Together, these data indicate that the TbEMC proteins and TbPSS2 localize to the same sub-organellar structure, which we refer to here as the mitochondrial ER-interface. Inter-organellar contact sites between the ER and the mitochondrion have not been studied before in *T. brucei*.

### Identification of TbEMC substrates

A combined approach of RNAi and stable isotope labeling with amino acids in cell culture (SILAC)-based quantitative proteomics has previously been used to determine the substrates of the trypanosomal atypical mitochondrial outer membrane translocase (ATOM complex)



**Fig 8. TbEMCs at the mitochondrial-ER interface.** A. Overview of the purification method for mitochondrial vesicles<sup>47</sup> and the mitochondrial outer membrane<sup>48</sup>. B-C. SDS-PAGE/immunoblot analyses of the four fractions whole cell (WC), cytosol and microsomal ER fraction (cyto and ER), crude (cruMi) and pure mitochondria (puMi). Abbreviations indicated in black italics in the sketch are analyzed in panel (B), fractions in white text are analyzed in panel (C). D. Protein abundance profiles of TbEMC subunits and control protein TbErp1, reproduced from Niemann et al., 2013<sup>48</sup>. E. Parasites co-expressing TbEMC3-HA and TbPSS2-cMyc were fixed and analyzed by immunofluorescence microscopy using the corresponding first and second antibodies. DNA was stained with DAPI in the composite (in blue; right panels). Scale bar = 5  $\mu$ m.

<https://doi.org/10.1371/journal.ppat.1009717.g008>

[48], and the two mitochondrial outer membrane protein import receptors ATOM46 and ATOM69 [49], respectively. In both cases it was sufficient to analyze whole cell extracts since non-imported mitochondrial proteins that accumulate in the cytosol are rapidly degraded. We therefore applied the same approach to identify the substrates of the TbEMC by performing SILAC-based proteomics analyses of whole cells after RNAi-mediated depletion of TbEMC3 and TbEMC8 for 3 and 3.5 days. The volcano plots in Fig 9 show that, in both cell lines, the targets of the RNAi, either TbEMC3 or TbEMC8, were efficiently downregulated at both time points. Moreover, more than 3000 proteins were quantified in each data set (for information about proteins identified and quantified, see S5 Table).

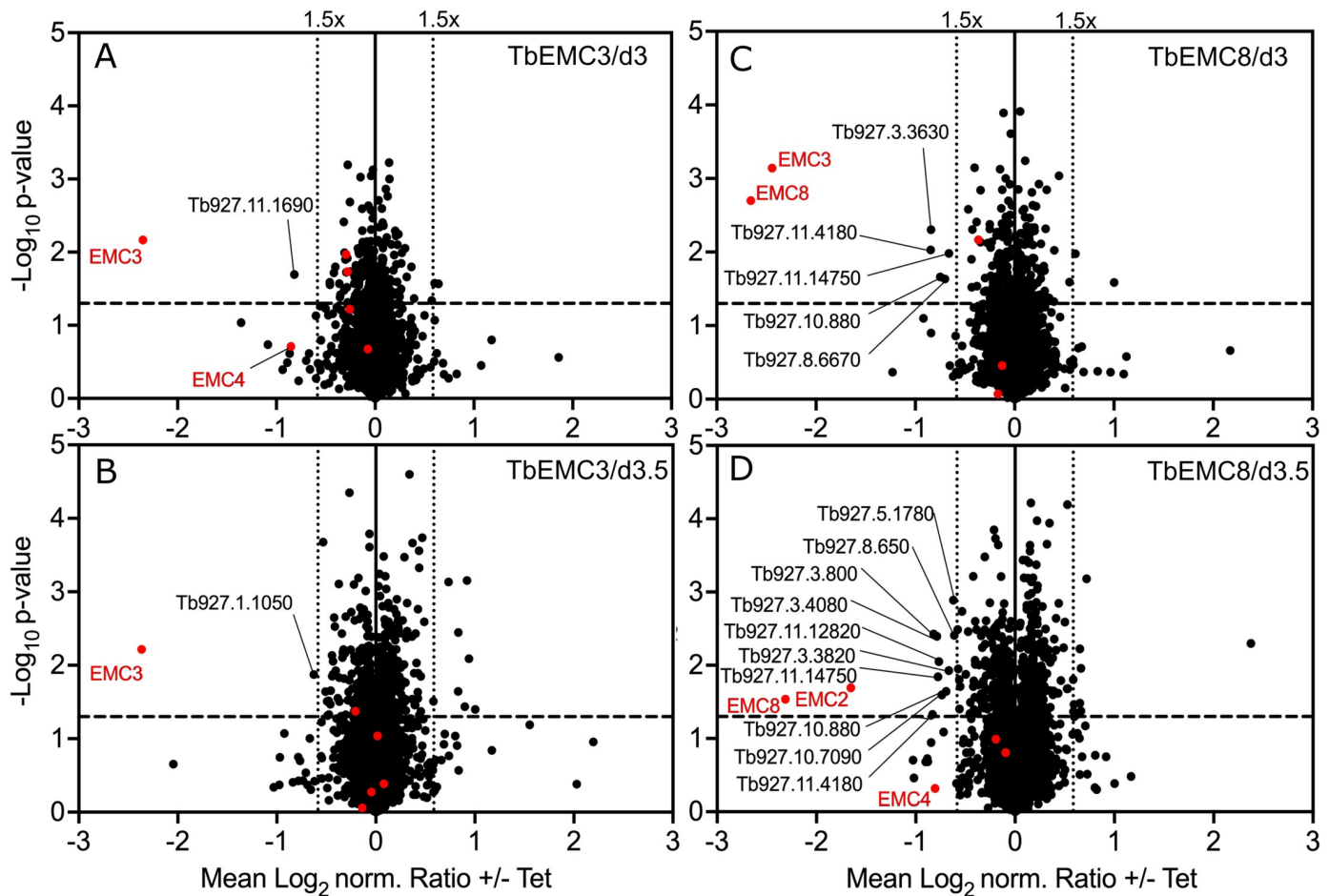
In the TbEMC3 RNAi cell line we did detect significant downregulation of TbEMC10 and TbEMC2 at at least one time point, however, the extent of downregulation was much lower, at approximately 1.2-fold. Interestingly, the only other proteins that were downregulated >1.5-fold at at least one of the time points were putative emoplamil binding protein (Tb927.11.1690) and metallo-dependent phosphatase-like domain-containing protein (Tb927.1.1050). Both proteins contain multiple predicted transmembrane domains and localize to the ER in human tissue (for the homolog of Tb927.11.1690) [50] and *T. brucei* (Tb927.1.1050) (Fig 9A and 9B). Thus, it is possible that these two proteins require the TbEMC for membrane insertion.

In addition, RNAi against TbEMC8 revealed significant downregulation of TbEMC3 (>5-fold) and TbEMC2 (>3-fold) (Fig 9C and 9D). Each protein was detected at only one time point. Other TbEMC proteins were depleted to lesser extents, such as TbEMC1 and TbEMC4 (Fig 9C and 9D). Furthermore, we noticed downregulation of >1.5-fold of 11 proteins at at least one of the time points. Five of them contain predicted transmembrane domains and, therefore, with the exception of mitochondrial alternative oxidase AOX (Tb927.10.7090), are at least initially inserted into the ER membrane indicating they could be possible substrates of the TbEMC. However, we also detected predicted soluble proteins that would not be inserted into the ER membrane, suggesting that some of the downregulated proteins are likely affected indirectly by TbEMC8 depletion.

Together, the SILAC-based RNAi analyses confirm a mutual dependence between certain TbEMC subunits that could be expected from proteins within a stable complex. However, they also show that we can only detect few putative substrates of the TbEMC using this method. A possible explanation for this could be that in contrast to what was observed with mitochondria, non-inserted TbEMC substrates may not be immediately degraded in the cytosol. Furthermore, it is possible that if TbEMC substrates are not inserted into the ER membrane, they might be mislocalized to other membranes. In either case we would not detect them with our approach.

## Depletion of most TbEMC proteins inhibits *de novo* phospholipid synthesis

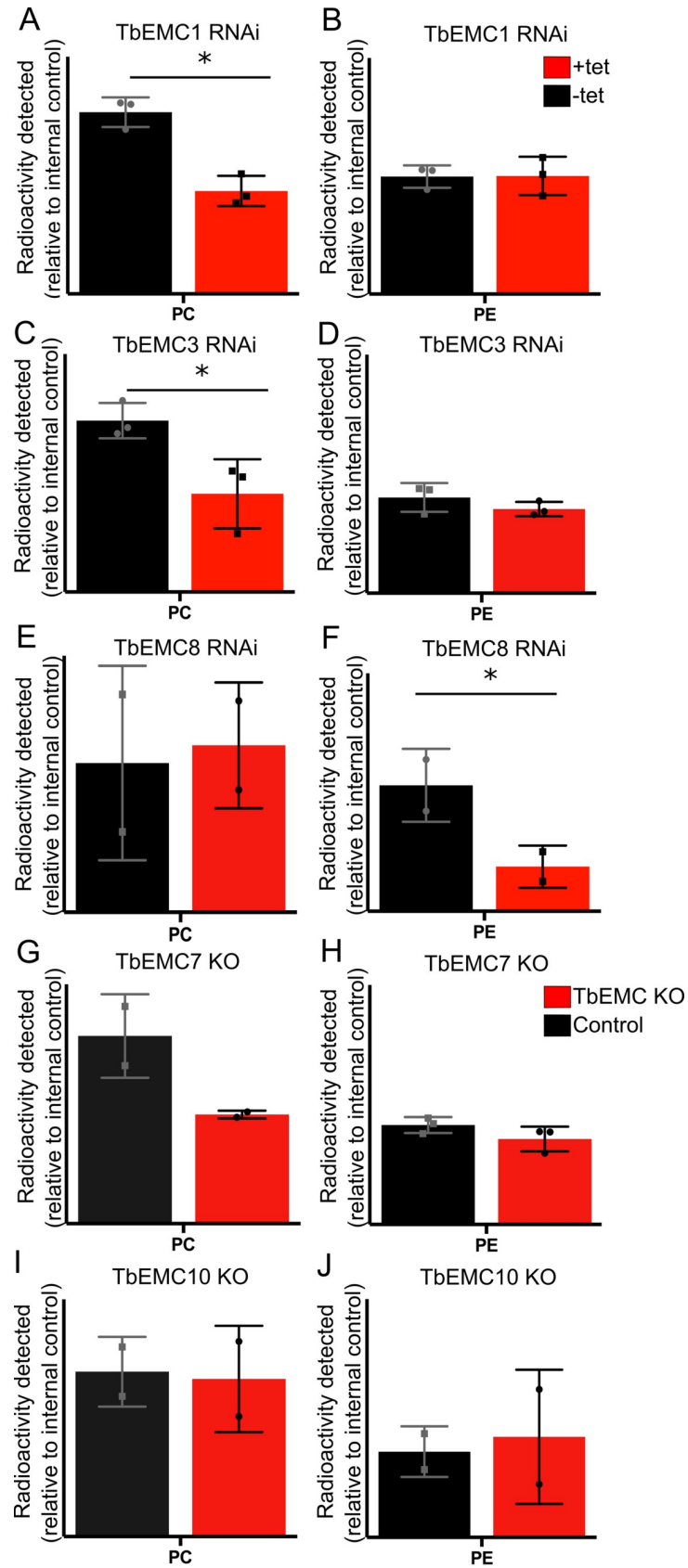
Besides its role as membrane protein insertase, the EMC has also been proposed to play a role in phospholipid homeostasis. To study if the TbEMC may play such a role in *T. brucei*, we



**Fig 9. Volcano plots of a SILAC-based quantitative MS analysis of whole cell extracts of uninduced and induced RNAi cell lines.** EMC3-RNAi (A, B) and EMC8-RNAi (C, D) parasites grown in SILAC media were harvested after 3 (A, C) or 3.5 (B, D) days of induction. Proteins were quantified in three independent biological replicates, with the mean  $\log_2$  of normalized (norm.) ratios plotted against the  $-\log_{10} P$  value (two-sided  $t$ -test). The horizontal dashed line indicates a significance level of  $p = 0.05$ . The vertical dotted lines mark proteins with a 1.5-fold change in abundance compared to control uninduced cells. Known TbEMC subunits are represented as red dots. Non-TbEMC proteins downregulated more than 1.5-fold are labeled with accession numbers.

<https://doi.org/10.1371/journal.ppat.1009717.g009>

analyzed *de novo* synthesis of the major phospholipid classes in *T. brucei* procyclic forms by measuring incorporation of [ $^3\text{H}$ ]-choline and [ $^3\text{H}$ ]-ethanolamine into PC and PE, respectively, after depletion of individual TbEMC subunits. The labeled precursors were added after 48 h of RNAi, i.e. before parasite growth was affected by down-regulation of the individual TbEMC proteins (see Fig 2C–2E), and incubated for 4 h to allow uptake and metabolism into phospholipids via the Kennedy pathway [30]. Formation of [ $^3\text{H}$ ]-PI using [ $^3\text{H}$ ]-*myo*-inositol as precursor was used as internal labeling control. Lipids were separated by thin layer chromatography (TLC) and incorporation of radioactivity into different phospholipid classes was quantified by radioisotope scanning; a representative TLC analysis is shown in S4 Fig. Interestingly, we found that depletion of TbEMC1 or TbEMC3 decreased *de novo* synthesis of [ $^3\text{H}$ ]-PC by 50–60% compared to control parasites (Fig 10A and 10C). In contrast, down-regulation of neither of these two TbEMCs had an effect on the synthesis of [ $^3\text{H}$ ]-PE (Fig 10B and 10D). Unexpectedly, the opposite effect was observed after depletion of TbEMC8. RNAi against TbEMC8 decreased *de novo* synthesis of [ $^3\text{H}$ ]-PE by >60% compared to control parasites, while no effect was seen for [ $^3\text{H}$ ]-PC formation (Fig 10E and 10F). No major differences in [ $^3\text{H}$ ]-PC or





**Fig 10. Analysis of [<sup>3</sup>H]-PC and [<sup>3</sup>H]-PE formation in TbEMC-depleted parasites.** Parasites cultured in the absence (black) or the presence (red) of tetracycline to maintain or ablate, respectively, TbEMC expression (A-F), or parasites lacking individual TbEMC proteins (G-J), were labeled with [<sup>3</sup>H]-choline or [<sup>3</sup>H]-ethanolamine, in combination with [<sup>3</sup>H]-inositol as internal standard, to measure *de novo* formation of phosphatidylcholine (PC) or phosphatidylethanolamine (PE), respectively. After extraction, phospholipids were separated by TLC and the amounts of radioactivity in individual peaks were quantified by radioisotope scanning. The data points are from independent experiments and are expressed relative to control values (means ± standard deviations). The asterisks indicate statistical significance ( $P < 0.05$ ).

<https://doi.org/10.1371/journal.ppat.1009717.g010>

[<sup>3</sup>H]-PE synthesis was seen in TbEMC7-KO (Fig 10G and 10H) and TbEMC10-KO parasites (Fig 10I and 10J). Together these results show that in *T. brucei* procyclic forms depletion of individual TbEMC proteins results in disturbance of select pathways for *de novo* synthesis of the major phospholipid classes.

However, these effects cannot be related to depletion of individual enzymes of the Kennedy pathway. Several of these enzymes, including choline/ethanolamine kinase (Tb927.5.1140), choline kinase (Tb927.11.2090), ethanolamine-phosphate cytidyltransferase (Tb927.11.14140), choline-phosphate cytidyltransferase (Tb927.10.12810) and ethanolamine phosphotransferase (TbEPT; Tb927.10.13290), were identified in the SILAC-based RNAi experiments, however, none of them were significantly downregulated in response to TbEMC8 or TbEMC3 depletion (Fig 9). Choline/ethanolamine phosphotransferase (TbCEPT; Tb927.10.8900) was not detected. These data suggest that the observed effects of TbEMC depletion on PC and PE biosynthesis are not caused by reduced levels of enzymes of the Kennedy pathway. The data however do not exclude the possibility that the two membrane-bound enzymes, TbEPT and TbCEPT, were re-localized to other membranes during TbEMC depletion.

## Discussion

In humans, EMC1, EMC2, EMC3, EMC5 and EMC6 form the core of the complex while EMC4, EMC7 and EMC10 constitute peripheral components. In addition, EMC8 and EMC2 form an interface with EMC5 [15]. In yeast, all EMC subunits interact with each other, except EMC1-EMC3 and EMC1-EMC4 [7]. In the present study we show that all individual TbEMC subunits interact with at least one other subunit, except TbEMC6, which did not interact with either TbEMC3 or TbEMC8 in our pull-downs or in the MS-based co-immunoprecipitation analyses. Interestingly, unlike in mammalian cells where EMC7 is considered a peripheral component of the complex [16], we identified TbEMC7 as a crucial subunit integral to the stability of the TbEMC. In its absence, the TbEMC is not properly formed or is destabilized, resulting in at least the release of TbEMC3 from the complex. TbEMC7-KO parasites continue to synthesize PC, albeit less efficiently, and are viable. In contrast, RNAi-mediated depletion of TbEMC3 results in growth arrest. Together, these results indicate that TbEMC3 is able to, at least partially, maintain its role in PC synthesis even after release from the TbEMC. Alternatively, TbEMC3 may retain its function in PC synthesis via transient association with the TbEMC in TbEMC7-KO parasites.

The EMC in mammalian and *S. cerevisiae* cells localizes exclusively to the ER. Analogously, most TbEMC subunits also localized to the ER and formed a complex in *T. brucei*. However, unexpectedly, TbEMC6 and TbEMC10 exhibited mitochondrial localization. This, together with our biochemical data showing that the TbEMC proteins and TbPSS2 co-fractionate in a distinct sub-organellar membrane fraction, localizes the TbEMC to the mitochondria-ER interface. A similar localization of the EMC in close proximity to both organelles has been proposed in *S. cerevisiae*, where it was postulated to act as an ER-mitochondrial tether [7]. Our results in *T. brucei* would be consistent with the TbEMC representing a similar tether.

Besides its function as ER membrane protein insertase, the EMC has been implicated in inter-organellar lipid exchange [7,10]. Although lipidomic analyses have revealed that the loss of EMC3 leads to perturbations in cellular lipid levels in murine cells [10], involvement of individual EMC subunits in the intricate pathways of lipid biosynthesis has not been studied before in detail. Here we demonstrate that RNAi-mediated ablation of TbEMC1, TbEMC3 or TbEMC8 expression inhibited production of PC or PE, the major phospholipid classes in *T. brucei* procyclic forms. PC and PE in *T. brucei* parasites are synthesized exclusively by the CDP-choline and CDP-ethanolamine branches of the Kennedy pathway [26], respectively. Both branches are essential for parasite survival in culture. The first two reactions of either branch, catalyzed by the respective kinases and phosphotransferases, occur in the cytosol. In contrast, the final reactions are mediated by the membrane-bound enzymes TbCEPT and TbEPT, respectively, in the ER. The two enzymes localize to different sub-compartments of the ER, with TbCEPT being present exclusively in the perinuclear ER and TbEPT localizing mostly to the bulk ER, with a fractional overlap with the perinuclear ER [30]. Since both enzymes have multiple TMDs, we hypothesized that their expression and/or membrane insertion might be affected following disruption of the TbEMC's attributed main function as membrane protein insertase. However, our SILAC data provided no evidence for downregulation of TbEPT or TbCEPT after the induction of RNAi against TbEMC proteins. In addition, since down-regulation of TbEMC1 or TbEMC3 resulted in inhibition of *de novo* production of PC, but had no effect on PE synthesis, while depletion of TbEMC8 had the opposite effect, i.e. inhibited *de novo* formation of PE without affecting PC synthesis, the effects cannot be explained by a general defect in membrane protein insertion. The localization of the TbEMC to the mitochondria-ER interface may suggest that certain subunits could be involved in the transfer of phospholipid precursors or intermediates between these organelles, or that the phospholipid synthesis defect was caused by disruption of this interface. Alternatively, recent work has shown that the presence of a hydrophilic vestibule or substrate binding pocket is central to the insertion mechanism of the EMC complex [15,31]. Simulations on the *S. cerevisiae* EMC structure have revealed that perturbations in the cytoplasmic leaflet of the ER bilayer facilitates flooding of the substrate binding pocket with water, promoting a hydrophilic environment instrumental to insertion [51]. Since PC and PE are major structural components of the ER membrane, it is tempting to speculate that the role of the TbEMC in lipid biosynthesis may be tied to the creation of a microenvironment conducive to TMD insertion, and thus TbEMC function.

In an attempt to identify substrates that may be inserted into the ER membrane by the TbEMC, we performed SILAC and RNAi experiments using TbEMC3 and TbEMC8 as RNAi targets. Technically these experiments worked well, as demonstrated by the efficient downregulation of the target proteins. However, the levels of only few other proteins were significantly downregulated more than 1.5-fold. Among these only few are predicted ER membrane proteins which could represent substrates of the TbEMC acting as insertase. However, the pleiotropic effects of TbEMC depletion in *T. brucei* (or the EMC in other organisms) suggest that the complex has more than a handful of substrates. This raises the question of why we were unable to detect the substrates in our SILAC-based approach. One reason may be that we only analyzed whole cell proteomes and that, unlike for mitochondria, where non-imported proteins are rapidly degraded in the cytosol, non-inserted TbEMC substrates are not degraded. It is possible that in the absence of the TbEMC, certain TbEMC substrates are inserted into the ER by other means (e.g., via the Sec61 pathway), or that non-inserted substrates accumulate as stable aggregates in the cytosol. Furthermore, we cannot exclude that failed insertion of TbEMC substrates into the ER membrane leads to their mislocalization to other membranes. In all these cases, the total cellular levels of the TbEMC substrates would not change upon

TbEMC depletion. Further work analyzing the proteomes of subcellular fractions may help to distinguish between these different possibilities but are beyond the scope of the present work.

## Materials and methods

### Reagents

All reagents were of analytical grade and purchased from Merck-Sigma Aldrich (Darmstadt, Germany) or MilliporeSigma (Burlington, MA, USA) unless otherwise stated. Kits for plasmid DNA extractions, PCR purifications, vector dephosphorylation and ligation reactions were purchased from Promega (Wallisellen, Switzerland). All sequencing was done by Microsynth AG (Balgach, Switzerland).

### Cell culture and knockdown trypanosome cell lines

Procyclic form trypanosomes were cultured at 27°C in SDM79 [52] supplemented with 10% heat inactivated fetal bovine serum (Thermo Fisher Scientific, Reinach, Switzerland) and a mixture of hemin and folic acid (160 µM hemin + 90 µM folic acid). Procyclic form (SmOxP9) trypanosomes expressing tagged TbEMCs were cultured in the presence of hygromycin (25 µg/ml), G418 (15 µg/ml), puromycin (2 µg/ml), blasticidin (5 µg/ml). TbEMC-KO parasites were cultured in the presence of hygromycin (25 µg/ml), G418 (15 µg/ml), puromycin (2 µg/ml) and blasticidin (5 µg/ml), and TbEMC-KO parasites expressing in-situ tagged proteins were cultured in the presence of an additional 0.2 µg/ml of phleomycin. *T. brucei* strain 29–13 [53] was used to generate RNAi cell lines against TbEMC1, TbEMC3 and TbEMC8, and cultured in the presence of hygromycin (25 µg/ml) and G418 (15 µg/ml), and puromycin (2 µg/ml), blasticidin (5 µg/ml) and phleomycin (0.2 µg/ml) in TbEMC1 RNAi, TbEMC3 RNAi and TbEMC8 RNAi, respectively, parasites. For induction of RNAi tetracycline (1 µg/ml) was added. The RNAi constructs were based on a derivative of the stem-loop vector pLEW100 [53] using the following inserts for the RNAi construct: TbEMC1 (Tb927.4.590) ORF nt 996–1246, TbEMC3 (Tb927.10.4760) 3' UTR nt 13–165 and TbEMC8 (Tb927.8.1570) ORF nt 2084–2501. Transfection and selection of clones of the above-mentioned TbEMC knock-downs were performed as described previously [54] and RNAi efficiency was verified by mRNA Northern blotting.

### Generation of TbEMC-KO parasites using clustered regularly interspaced short palindromic repeats (CRISPR)/CRISPR associated protein 9

CRISPR/Cas9 was employed to create knockouts of individual TbEMCs, as described previously [33]. Briefly, procyclic form (SmOxP9) trypanosomes were used to create knockouts by replacing the TbEMC gene on both alleles with 2 antibiotic resistance cassettes by transfection. The 2 antibiotic resistance cassettes flanked by homology sequences of 30 nt were amplified by PCR reactions using pPOTv6 plasmids [55] with hygromycin and geneticin resistance cassettes. Both the antibiotic cassettes as well as short guide RNA templates consisting of a T7 promoter sequence, a Cas9 binding site, and 20 nt long target sequence were amplified as described previously [33]. Primers were generated by [www.leishgedit.net](http://www.leishgedit.net) (S1 Table) and all PCR reactions were performed using Expand High Fidelity PCR System (Roche, Basel, Switzerland), pooled and purified using PCR purification kits. Transfection was performed using a 4D-Nucleofector system, with the FI-115 program (Lonza, Basel, Switzerland). The transfected culture was distributed to 24-well plates after a 2 h recovery and 22.5 µg/ml geneticin and 37.5 µg/ml hygromycin (selective antibiotics) were added after 24 h.

TbEMC-KO genotypes were verified by PCR analysis of genomic DNA isolated from parental and knockout cell lines. All primer pairs and PCRs conducted for TbEMC knockout verification are listed in [S1 Fig](#).

### In-situ tagging of TbEMCs

TbEMCs were tagged in SmOxP9 as well as TbEMC-KO parasites using CRISPR/Cas9 technique as described above. Briefly, resistance cassette consisting of a cMyc tag sequence and a blasticidin/hygromycin/phleomycin resistance gene and homology sequences was inserted in TbEMC genes by homologous recombination. Corresponding guide RNA templates were also generated. All primers were generated by [www.leishgedit.net](http://www.leishgedit.net) ([S2 Table](#)). The PCR products were pooled, purified, and transfected as described above. 24 hours after distribution into 24-well plates, selection antibiotics were added. TbEMC protein expression in the parasites was analyzed by SDS-PAGE and immunoblotting. TbPSS2 cell line has been described previously [[46](#)].

### Whole cell lysates, crude membrane preparations and immunoprecipitations

For whole cell lysate preparations,  $10^7$  trypanosomes were harvested, and the resultant pellet was washed with Tris-buffered saline (TBS, 10 mM Tris-HCl, pH 7.5, 144 mM NaCl) and resuspended in sample buffer (2.5% SDS). The sample was then incubated at 50°C for 5 min.

For crude membrane preparations, a digitonin extraction was performed. Trypanosomes ( $10^8$  cells) were harvested by centrifugation, washed in TBS and resuspended in 0.5 ml buffer (20 mM Tris-HCl, pH 7.5, 600 mM sorbitol, 2 mM EDTA) containing 0.05% (w/v) digitonin. The suspension was centrifuged at 6000 x g. Subsequently, 100 l extraction buffer (20 mM Tris-HCl, pH 7.2, 15 mM  $\text{NaH}_2\text{PO}_4$ , 0.6 M sorbitol) containing 1.5% (w/v) digitonin was added to the pellet. The sample was incubated on ice for 15 min and membranes were pelleted by centrifugation at 16'000 x g in a tabletop centrifuge (15 min, 4°C). The resultant pellet was used for further analysis.

For immunoprecipitations, whole cell lysates were solubilized in 1 ml lysis buffer (10 mM Tris-HCl, pH 7.4, 150 mM NaCl, 1 mM EDTA, 1% Triton X-100, 0.5% NP-40, protease inhibitors) and incubated on ice for 30 min. After centrifugation at 16'000 x g (15 min, 4°C) the lysate (input) was incubated with anti-HA or anti-cMyc antibodies (9E10, Santa Cruz Biotechnology, Dallas, TX, USA / 16B12 Enzo Life Sciences, Farmingdale NY, USA; dilution 1:40) in combination with 50 l Protein G Dynabeads (Thermo Fischer Scientific) for 16 h. Bound proteins were eluted by addition of sample buffer and heating at 50°C for 5 min. The proteins were analyzed by SDS-PAGE and immunoblotting.

Immunoprecipitation followed by MS analysis was done by washing  $10^8$  parasites in PBS, followed by cross-linking in 0.1% paraformaldehyde in PBS for 8 min at room temperature. After addition of glycine to a final concentration of 125 mM for 5 min, cells were washed twice with TBS. Cell pellets were lysed and processed as described above, except that the beads were washed with lysis buffer lacking detergent after the immunoprecipitation. Washed beads were frozen in liquid nitrogen and stored at -80°C.

### PAGE

Proteins were denatured by SDS and run on 10% polyacrylamide gels as described previously [[56](#)]. For native PAGE, samples were prepared and loaded onto 4–12% gradient gels as described elsewhere [[57](#)]. The proteins were then transferred onto PVDF membranes (Thermo Fisher Scientific) using a semidry protein blotting system (Bio-Rad, Hercules, CA, USA) for

75 min at a maximal current of  $2.5 \text{ mA cm}^{-2}$  gel area. The membranes were then blocked for 1 h in TBS, containing 5% (w/v) milk powder, and proteins of interest were identified using specific primary and horseradish peroxidase-conjugated secondary antibodies. Protein-specific antibodies were visualized using SuperSignal West Pico PLUS Chemiluminescent Substrate (Thermo Fisher Scientific). The following antibodies were diluted in TBS, containing 5% milk: mouse monoclonal anti-cMyc (9E10; Santa Cruz Biotechnology; dilution 1:1000); mouse monoclonal anti-HA (HA11; Enzo Life Sciences; dilution 1:3000); rabbit anti-AAC1 (kindly provided by Alena P. Ziková, University of South Bohemia, Ceske Budejovice, Czech Republic; dilution 1:20000); HRP-conjugated anti-rabbit and anti-mouse antibody (DAKO-Agilent, Basel, Switzerland; dilution 1:1000 and 1:5000, respectively).

### Immunofluorescence microscopy

For immunofluorescence staining of trypanosomes,  $10^6$  cells were harvested by centrifugation, resuspended in ice cold PBS (phosphate-buffered saline; 137 mM NaCl, 2.7 mM KCl, 10 mM  $\text{Na}_2\text{HPO}_4$ , 2 mM  $\text{KH}_2\text{PO}_4$ , pH 7.4), allowed to adhere onto glass slides (Thermo Fisher Scientific) and fixed with 4% (w/v) paraformaldehyde for 10 min. The cells were then washed with PBS and permeabilized with 0.2% (w/v) Triton X-100 for 5 min. After blocking in PBS containing 2% (w/v) BSA, for 30 min, parasites were incubated with antibodies diluted in blocking solution for 45 min. The following primary antibodies were used: rabbit anti-cMyc (LubioSciences, Zurich, Switzerland; dilution 1:200); mouse monoclonal anti-cMyc (9E10, Santa Cruz Biotechnology; dilution 1:200), mouse anti-HA (16B12; Enzo Life Sciences; dilution 1:200), rabbit anti-ATOM40 (dilution 1:1000), rabbit anti-BiP (kindly provided by J. Bangs, University of Buffalo, NY, USA; dilution 1:20,000). After 3 washes in PBS for 5 min each, the cells were incubated with the corresponding secondary fluorophore-conjugated antibodies Alexa Fluor goat anti-mouse 488 and goat anti-rabbit 594 (Thermo Fisher Scientific; dilution 1:1000) in blocking solution for 45 min. Cells were washed, air dried and mounted with Vectashield (Vector Laboratories, Burlingame, CA, USA) containing 4',6-diamidino-2-phenylindole (DAPI).

Fluorescence microscopy was performed with a Leica DM 16000 B inverted microscope using a 60x oil objective and images were acquired using Leica DFC360 FX camera. Image deconvolution and processing was performed using Leica LAS X and Fiji software (NIH).

### $[^3\text{H}]$ -glycerol labeling and lipid analysis

Trypanosomes ( $10^8$  cells) were labeled with  $50 \mu\text{Ci } [^3\text{H}]$ -ethanolamine or  $50 \mu\text{Ci } [^3\text{H}]$ -choline chloride in combination with  $20 \mu\text{Ci } [^3\text{H}]$ -inositol (Anawa, Kloten, Switzerland) for 4 h before being harvested by centrifugation and washed twice with TBS. The radiolabeled lipids were extracted according to Bligh and Dyer [58], spotted onto silica gel plates (Merck, Zug, Switzerland) and separated by one dimensional TLC using a solvent system consisting of chloroform: methanol: acetic acid (65: 25: 8, by vol) to track PE formation and chloroform: methanol: acetic acid: water (50: 30: 8: 4, by vol) to track PC formation. The plates were dried, and radioactivity was detected using a radioisotope scanner (Berthold Technologies, Bad Wildbad, Germany). Data processing was done using the Rita Control software provided by the manufacturer.

### Preparation of mitochondrial vesicles, mitochondrial outer membrane (OM) and OM/ER fractions

The detailed procedure for the purification of mitochondrial vesicles from a variety of different cell amounts is detailed elsewhere [44]. Briefly, trypanosomes were lysed at isotonic conditions

using nitrogen cavitation, and following differential centrifugation, mitochondrial vesicles were purified from Nycodenz step-gradients subjected to density gradient centrifugation. Mitochondrial OM was further purified from these mitochondrial vesicles according to a previously described protocol [45].

### SILAC analysis

Cells were washed in PBS and taken up in SDM-80 supplemented with 5.55 mM glucose, either light ( $^{12}\text{C}_6/^{14}\text{N}_\alpha$ ) or heavy ( $^{13}\text{C}_6/^{15}\text{N}_\alpha$ ) isotopes of arginine (1.1 mM) and lysine (0.4 mM) (Euroisotop, Saarbrücken, Germany) and 10% dialyzed fetal calf serum (BioConcept, Allschwil, Switzerland). To guarantee complete labeling of all proteins with heavy amino acids, the cells were cultured in SILAC medium for 6–10 doubling times. The TbEMC3 and TbEMC8 RNAi cell lines were induced for 3 or 3.5 days, and  $1 \times 10^8$  uninduced and  $1 \times 10^8$  induced cells were harvested and mixed. The pellets generated from mixing these cells were then analyzed. All SILAC-based RNAi experiments were performed in three biological replicates including a label-switch and analyzed by liquid chromatography-mass spectrometry (LC-MS).

### Quantitative LC-MS and data analysis

SILAC-labeled cells of TbEMC3 and TbEMC8 RNAi experiments, mixed in equal ratios (+/- Tet; induced for 3 and 3.5 days, respectively; 3 replicates each with label-switch), were lysed in 8 M urea/50 mM  $\text{NH}_4\text{HCO}_3$ . Proteins were reduced, alkylated and digested with trypsin in solution as described previously [48]. Peptide mixtures were analyzed by LC-MS using an Orbitrap Elite mass spectrometer (Thermo Fisher Scientific, Bremen, Germany) coupled to an UltiMate 3000 RSLCnano HPLC system (Thermo Fisher Scientific, Dreieich, Germany), which was operated with nanoEase M/Z Symmetry C18 precolumns (20 mm x 0.18 mm; flow rate, 10  $\mu\text{l}/\text{min}$ ; Waters) and a nanoEase M/Z HSS C18 T3 analytical column (250 mm x 75  $\mu\text{m}$ ; particle size, 1.8  $\mu\text{m}$ ; packing density, 100  $\text{\AA}$ ; flowrate, 300  $\text{nL}/\text{min}$ ; Waters). Peptides were separated using a binary solvent system consisting of 0.1% formic acid (solvent A) and 30% acetonitrile/50% methanol/0.1% formic acid (solvent B). Following loading and concentration for 5 min at 7% B, peptides were eluted applying the following gradient: 7 52% B in 255 min, 52 65% B in 70 min, 65 95% B in 5 min and 5 min at 95% B.

The settings for the acquisition of mass spectrometric data in data-dependent mode were as follows: mass range,  $m/z$  370 1,700; resolution, 120,000 (at  $m/z$  400), target value,  $1 \times 10^6$  ions; maximum injection time, 200 ms for MS survey scans; TOP25 method for low energy collision-induced dissociation of multiply charged peptides in the linear ion trap; normalized collision energy, 35%; activation q, 0.25; activation time, 10 ms; target value, 5,000 ions; maximum injection time, 150 ms; dynamic exclusion time, 45 s.

For protein identification and relative quantification, MaxQuant/Andromeda [59,60] (version 1.6.5.0) was used. Mass spectrometric raw data were searched against a fasta file containing all entries for TREU927, downloaded from the TriTryp database (version 8.1; <https://tritrypdb.org/>). MaxQuant default settings were applied for data processing, except that proteins were identified and quantified based on  $\geq 1$  unique peptide and  $\geq 1$  ratio count, respectively. Carbamidomethylation of cysteine was set as fixed modification, acetylation of N-termini and oxidation of methionine were considered as variable modifications, and Lys8 and Arg10 were set as heavy labels. The options "requantify" and "match between runs" were enabled. The mean  $\log_2$  of normalized protein abundance ratios (+/- Tet) was calculated and p-values ( $n = 3$ ) were determined using a two-sided Student's t-test. For information about proteins identified and quantified, see [S5 Table](#).

## Supporting information

**S1 Fig. Verification of TbEMC-KO genotypes.** gDNA extracted from parental (SmOx P9), TbEMC7-KO (A) and TbEMC10-KO (B) parasites was analyzed by PCR using the primer pairs indicated in C. The TbEMC alleles and hygromycin (Hyg) and geneticin (G418) resistance cassettes are indicated.

(TIF)

**S2 Fig. Verification of TbEMC mRNA levels.** Total RNA extracted from parasites before (-tet) and after 3 days of induction of RNAi (+tet) was analyzed by Northern blotting using <sup>32</sup>P-labeled probes against the ORFs of TbEMC1 (A) or TbEMC3 (B). Ethidium bromide-stained cytosolic rRNA served as loading control.

(TIF)

**S3 Fig. Analysis of TbEMC complex stability.** Protein extracts from TbEMC10-KO (left lanes) and control (right lanes) parasites expressing *in situ* cMyc-tagged TbEMC3 were analyzed by native PAGE and immunoblotting using anti-cMyc (A) and anti-AAC1 (B, loading controls) antibodies. AAC1, ADP/ATP-carrier protein 1. Molecular mass markers (in kDa) are indicated in the left margin.

(TIFF)

**S4 Fig. De novo synthesis of [<sup>3</sup>H]-PE and [<sup>3</sup>H]-PI in TbEMC8 RNAi cells.** Parasites were cultured in the absence (A) or the presence (B) of tetracycline to maintain or ablate, respectively, TbEMC8 expression and incubated with [<sup>3</sup>H]-ethanolamine and [<sup>3</sup>H]-inositol (as control) for 4 h. Phospholipids were extracted and separated by TLC and incorporation of radioactivity into the different phospholipid classes was analyzed by radioisotope scanning.

(TIFF)

**S1 Table. Primers used for generating *in-situ* tagged TbEMC cell lines.**

(TIF)

**S2 Table. Primers used for generating TbEMC KO and TbEMC RNAi cell lines.**

(TIF)

**S3 Table. Putative TbEMC3 interaction partners.**

(TIF)

**S4 Table. Putative TbEMC5 interaction partners.**

(TIF)

**S5 Table. Results from SILAC-based RNAi analyses.**

(XLSX)

## Acknowledgments

AI thanks S. Iyer and P.G. Balan for their support. BW thanks B. Knapp and W.D. Mühlhäuser for support in MS data acquisition and analysis. PB thanks R. Plant, M. Bütikofer and L. Apitzsch for their support.

## Author Contributions

**Conceptualization:** Advaita Iyer, Moritz Niemann, Mauro Serricchio, André Schneider, Peter Bütikofer.

**Data curation:** Advaita Iyer, Moritz Niemann, Caroline E. Dewar, Silke Oeljeklaus, Bettina Warscheid.

**Formal analysis:** Advaita Iyer, Moritz Niemann, Caroline E. Dewar, Silke Oeljeklaus.

**Funding acquisition:** Bettina Warscheid, André Schneider, Peter Bütikofer.

**Investigation:** Advaita Iyer, Moritz Niemann, Mauro Serricchio, Luce Farine, André Schneider, Peter Bütikofer.

**Methodology:** Advaita Iyer, Moritz Niemann, Mauro Serricchio, Caroline E. Dewar, Silke Oeljeklaus, Luce Farine, Peter Bütikofer.

**Project administration:** Peter Bütikofer.

**Software:** Bettina Warscheid.

**Supervision:** Bettina Warscheid, André Schneider, Peter Bütikofer.

**Validation:** Caroline E. Dewar, Silke Oeljeklaus.

**Writing – original draft:** Advaita Iyer.

**Writing – review & editing:** Moritz Niemann, Mauro Serricchio, Bettina Warscheid, André Schneider, Peter Bütikofer.

## References

1. Wideman JG. The ubiquitous and ancient ER membrane protein complex (EMC): tether or not? *F1000Research*. 2015; <https://doi.org/10.12688/f1000research.6944.2> PMID: 26512320
2. Jonikas MC, Collins SR, Denic V, Oh E, Quan EM, Schmid V, et al. Comprehensive characterization of genes required for protein folding in the endoplasmic reticulum. *Science* (80-). 2009; <https://doi.org/10.1126/science.1167983> PMID: 19325107
3. Louie RJ, Guo J, Rodgers JW, White R, Shah NA, Pagant S, et al. A yeast phenomic model for the gene interaction network modulating CFTR- $\Delta$ F508 protein biogenesis. *Genome Med*. 2012; 4(12). <https://doi.org/10.1186/gm404> PMID: 23270647
4. Chitwood PJ, Hegde RS. The Role of EMC during Membrane Protein Biogenesis. *Trends in Cell Biology*. 2019. <https://doi.org/10.1016/j.tcb.2019.01.007> PMID: 30826214
5. Miller-Vedam LE, Bräuning B, Popova KD, Oakdale NTS, Bonnar JL, Prabu JR, et al. Structural and mechanistic basis of the EMC-dependent biogenesis of distinct transmembrane clients. *Elife*. 2020; 9. <https://doi.org/10.7554/eLife.62611> PMID: 33236988
6. Volkmar N, Christianson JC. Squaring the EMC—How promoting membrane protein biogenesis impacts cellular functions and organismal homeostasis. Vol. 133, *Journal of Cell Science*. 2020. <https://doi.org/10.1242/jcs.243519> PMID: 32332093
7. Lahiri S, Chao JT, Tavassoli S, Wong AKO, Choudhary V, Young BP, et al. A Conserved Endoplasmic Reticulum Membrane Protein Complex (EMC) Facilitates Phospholipid Transfer from the ER to Mitochondria. *PLoS Biol*. 2014; <https://doi.org/10.1371/journal.pbio.1001969> PMID: 25313861
8. Ngo AM, Shurtleff MJ, Popova KD, Kulsuptrakul J, Weissman JS, Puschnik AS. The ER membrane protein complex is required to ensure correct topology and stable expression of flavivirus Polyproteins. *Elife*. 2019; <https://doi.org/10.7554/eLife.48469> PMID: 31516121
9. Shurtleff MJ, Itzhak DN, Hussmann JA, Schirle Oakdale NT, Costa EA, Jonikas M, et al. The ER membrane protein complex interacts cotranslationally to enable biogenesis of multipass membrane proteins. *Elife*. 2018; <https://doi.org/10.7554/eLife.37018> PMID: 29809151
10. Tang X, Snowball JM, Xu Y, Na CL, Weaver TE, Clair G, et al. EMC3 coordinates surfactant protein and lipid homeostasis required for respiration. *J Clin Invest*. 2017; <https://doi.org/10.1172/JCI94152> PMID: 29083321
11. Satoh T, Satoh AK. EMC is essential for biosynthesis of rhodopsin and other multipass membrane proteins in *Drosophila* photoreceptors. *Seikagaku. The Journal of Japanese Biochemical Society*. 2015.
12. Richard M, Boulin T, Robert VJP, Richmond JE, Bessereau JL. Biosynthesis of ionotropic acetylcholine receptors requires the evolutionarily conserved ER membrane complex. *Proc Natl Acad Sci U S A*. 2013; <https://doi.org/10.1073/pnas.1216154110> PMID: 23431131



13. Guna A, Volkmar N, Christianson JC, Hegde RS. The ER membrane protein complex is a transmembrane domain insertase. *Science* (80-). 2018; <https://doi.org/10.1126/science.aao3099> PMID: 29242231
14. Tian S, Wu Q, Zhou B, Choi MY, Ding B, Yang W, et al. Proteomic Analysis Identifies Membrane Proteins Dependent on the ER Membrane Protein Complex. *Cell Rep* [Internet]. 2019; 28(10):2517-2526. e5. Available from: <https://doi.org/10.1016/j.celrep.2019.08.006> PMID: 31484065
15. Pleiner T, Tomaleri GP, Januszyk K, Inglis AJ, Hazu M, Voorhees RM. Structural basis for membrane insertion by the human ER membrane protein complex. *Science* (80-). 2020; 369(6502). <https://doi.org/10.1126/science.abb5008> PMID: 32439656
16. Volkmar N, Thezenas ML, Louie SM, Juskiewicz S, Nomura DK, Hegde RS, et al. The ER membrane protein complex promotes biogenesis of sterol-related enzymes maintaining cholesterol homeostasis. *J Cell Sci*. 2019; <https://doi.org/10.1242/jcs.223453> PMID: 30578317
17. Simpson AGB, Roger AJ. The real “kingdoms” of eukaryotes. Vol. 14, *Current biology: CB*. 2004.
18. Baker N, Hamilton G, Wilkes JM, Hutchinson S, Barrett MP, Horn D. Vacuolar ATPase depletion affects mitochondrial ATPase function, kinetoplast dependency, and drug sensitivity in trypanosomes. *Proc Natl Acad Sci U S A*. 2015; 112(29).
19. Fenn K, Matthews KR. The cell biology of *Trypanosoma brucei* differentiation. Vol. 10, *Current Opinion in Microbiology*. 2007.
20. Sharma R, Gluenz E, Peacock L, Gibson W, Gull K, Carrington M. The heart of darkness: growth and form of *Trypanosoma brucei* in the tsetse fly. Vol. 25, *Trends in Parasitology*. 2009.
21. Tyler KM, Matthews KR, Gull K. Anisomorphic cell division by African trypanosomes. *Protist*. 2001; 152(4). <https://doi.org/10.1078/1434-4610-00074> PMID: 11822664
22. Povelones ML. Beyond replication: division and segregation of mitochondrial DNA in kinetoplastids. Vol. 196, *Molecular and biochemical parasitology*. 2014.
23. Robinson DR, Gull K. Basal body movements as a mechanism for mitochondrial genome segregation in the trypanosome cell cycle. *Nature*. 1991; 352(6337). <https://doi.org/10.1038/352731a0> PMID: 1876188
24. Schneider A, Ochsenreiter T. Failure is not an option—mitochondrial genome segregation in trypanosomes. *J Cell Sci*. 2018; 131(18).
25. Smith TK, Bütikofer P. Lipid metabolism in *Trypanosoma brucei*. Vol. 172, *Molecular and Biochemical Parasitology*. 2010.
26. Ramakrishnan S, Serricchio M, Striepen B, Bütikofer P. Lipid synthesis in protozoan parasites: A comparison between kinetoplastids and apicomplexans. Vol. 52, *Progress in Lipid Research*. 2013.
27. Patnaik PK, Field MC, Menon AK, Cross GAM, Yee MC, Bütikofer P. Molecular species analysis of phospholipids from *Trypanosoma brucei* bloodstream and procyclic forms. *Mol Biochem Parasitol*. 1993; 58(1). [https://doi.org/10.1016/0166-6851\(93\)90094-e](https://doi.org/10.1016/0166-6851(93)90094-e) PMID: 8459838
28. KENNEDY EP, WEISS SB. The function of cytidine coenzymes in the biosynthesis of phospholipides. *J Biol Chem*. 1956; 222(1). PMID: 13366993
29. Signorell A, Rauch M, Jelk J, Ferguson MAJ, Bütikofer P. Phosphatidylethanolamine in *Trypanosoma brucei* is organized in two separate pools and is synthesized exclusively by the Kennedy pathway. *J Biol Chem*. 2008; 283(35). <https://doi.org/10.1074/jbc.M803600200> PMID: 18587155
30. Farine L, Niemann M, Schneider A, Bütikofer P. Phosphatidylethanolamine and phosphatidylcholine biosynthesis by the Kennedy pathway occurs at different sites in *Trypanosoma brucei*. *Sci Rep*. 2015; 5. <https://doi.org/10.1038/srep16787> PMID: 26577437
31. Bai L, You Q, Feng X, Kovach A, Li H. Structure of the ER membrane complex, a transmembrane-domain insertase. *Nature*. 2020; 584(7821). <https://doi.org/10.1038/s41586-020-2389-3> PMID: 32494008
32. Bannai H, Tamada Y, Maruyama O, Nakai K, Miyano S. Extensive feature detection of N-terminal protein sorting signals. *Bioinformatics*. 2002; 18(2). <https://doi.org/10.1093/bioinformatics/18.2.298> PMID: 11847077
33. Beneke T, Madden R, Makin L, J V, Sunter J, E G. A CRISPR-Cas9 high-throughput genome editing toolkit for kinetoplastids: Supplementary information. *Handb Gener IV Nucl React*. 2016;
34. Bangs JD, Uyetake L, Brickman MJ, Balber AE, Boothroyd JC. Molecular cloning and cellular localization of a BiP homologue in *trypanosoma brucei*. Divergent ER retention signals in a lower eukaryote. *J Cell Sci*. 1993; 105(4).
35. Pusnik M, Schmidt O, Perry AJ, Oeljeklaus S, Niemann M, Warscheid B, et al. Mitochondrial preprotein translocase of trypanosomatids has a bacterial origin. *Curr Biol*. 2011; 21(20).
36. Niemann M, Harsman A, Mani J, Peikert CD, Oeljeklaus S, Warscheid B, et al. tRNAs and proteins use the same import channel for translocation across the mitochondrial outer membrane of trypanosomes. *Proc Natl Acad Sci U S A*. 2017; 114(37). <https://doi.org/10.1073/pnas.1711430114> PMID: 28847952

37. Christianson JC, Olzmann JA, Shaler TA, Sowa ME, Bennett EJ, Richter CM, et al. Defining human ERAD networks through an integrative mapping strategy. *Nat Cell Biol.* 2012;
38. Casanova M, Portalès P, Blaineau C, Crobu L, Bastien P, Pagès M. Inhibition of active nuclear transport is an intrinsic trigger of programmed cell death in trypanosomatids. *Cell Death Differ.* 2008; 15(12). <https://doi.org/10.1038/cdd.2008.132> PMID: 19011643
39. Chitwood PJ, Juszkievicz S, Guna A, Shao S, Hegde RS. EMC Is Required to Initiate Accurate Membrane Protein Topogenesis. *Cell.* 2018; 175(6). <https://doi.org/10.1016/j.cell.2018.10.009> PMID: 30415835
40. Kiefer D, Kuhn A. YidC-mediated membrane insertion. Vol. 365, *FEMS Microbiology Letters.* 2018.
41. Vance JE. Phospholipid synthesis in a membrane fraction associated with mitochondria. *J Biol Chem.* 1990; 265(13).
42. Stone SJ, Vance JE. Phosphatidylserine synthase-1 and -2 are localized to mitochondria-associated membranes. *J Biol Chem.* 2000; 275(44). <https://doi.org/10.1074/jbc.M002865200> PMID: 10938271
43. Area-Gomez E, Del Carmen Lara Castillo M, Tambini MD, Guardia-Laguarta C, De Groof AJC, Madra M, et al. Upregulated function of mitochondria-associated ER membranes in Alzheimer disease. *EMBO J.* 2012; 31(21). <https://doi.org/10.1038/emboj.2012.202> PMID: 22892566
44. Niemann M, Schneider A. A Scalable Purification Method for Mitochondria from *Trypanosoma brucei*. In: *Methods in Molecular Biology.* 2020.
45. Niemann M, Wiese S, Mani J, Chanfon A, Jackson C, Meisinger C, et al. Mitochondrial outer membrane proteome of *trypanosoma brucei* reveals novel factors required to maintain mitochondrial morphology. *Mol Cell Proteomics.* 2013; 12(2). <https://doi.org/10.1074/mcp.M112.023093> PMID: 23221899
46. Farine L, Jelk J, Choi JY, Voelker DR, Nunes J, Smith TK, et al. Phosphatidylserine synthase 2 and phosphatidylserine decarboxylase are essential for aminophospholipid synthesis in *Trypanosoma brucei*. *Mol Microbiol.* 2017; 104(3). <https://doi.org/10.1111/mmi.13637> PMID: 28142188
47. Kruzel EK, Zimmert GP, Bangs JD. Life Stage-Specific Cargo Receptors Facilitate Glycosylphosphatidylinositol-Anchored Surface Coat Protein Transport in *Trypanosoma brucei*. *mSphere.* 2017; 2(4). <https://doi.org/10.1128/mSphere.00282-17> PMID: 28713858
48. Peikert CD, Mani J, Morgenstern M, Käser S, Knapp B, Wenger C, et al. Charting organellar importomes by quantitative mass spectrometry. *Nat Commun.* 2017;8. <https://doi.org/10.1038/s41467-017-00021-9> PMID: 28364116
49. Rout S, Oeljeklaus S, Makki A, Tachezy J, Warscheid B, Schneider A. Determinism and contingencies shaped the evolution of mitochondrial protein import. *Proc Natl Acad Sci U S A.* 2021; 118(6). <https://doi.org/10.1073/pnas.2017774118> PMID: 33526678
50. Hanner M, Moebius FF, Weber F, Grabner M, Striessnig J, Glossmann H. Phenylalkylamine Ca<sup>2+</sup> Antagonist Binding Protein. *J Biol Chem.* 1995; 270(13). <https://doi.org/10.1074/jbc.270.13.7551> PMID: 7706302
51. Alvira S, Corey RA, Collinson I, Römisch K. Membrane protein biogenesis by the EMC. *EMBO J.* 2021; 40(2). <https://doi.org/10.15252/emboj.2020107407> PMID: 33346928
52. Brun R, Schonenberger M. Cultivation and in vitro cloning of procyclic culture forms of *Trypanosoma brucei* in a semi-defined medium. Short communication. *Acta Trop.* 1979; 36(3).
53. Wirtz E, Leal S, Ochatt C, Cross GAM. A tightly regulated inducible expression system for conditional gene knock-outs and dominant-negative genetics in *Trypanosoma brucei*. *Mol Biochem Parasitol.* 1999; [https://doi.org/10.1016/s0166-6851\(99\)00002-x](https://doi.org/10.1016/s0166-6851(99)00002-x) PMID: 10215027
54. Waldman A. Genetic Recombination: Reviews and Protocols. *Methods Mol Biol.* 2004;262.
55. Dean S, Sunter J, Wheeler RJ, Hodkinson I, Gluenz E, Gull K. A toolkit enabling efficient, scalable and reproducible gene tagging in trypanosomatids. *Open Biol.* 2015; 5(1). <https://doi.org/10.1098/rsob.140197> PMID: 25567099
56. Laemmli UK. Cleavage of structural proteins during the assembly of the head of bacteriophage T4. *Nature.* 1970; <https://doi.org/10.1038/227680a0> PMID: 5432063
57. Wittig I, Braun HP. Blue native PAGE: Abstract: *Nature Protocols.* Nat Protoc. 2006;
58. Bligh EG, Dyer WJ. A rapid method for total lipid extraction. *Biochem Cell Biol.* 1959; <https://doi.org/10.1139/o59-099> PMID: 13671378
59. Cox J, Mann M. MaxQuant enables high peptide identification rates, individualized p.p.b.-range mass accuracies and proteome-wide protein quantification. *Nat Biotechnol.* 2008; 26(12). <https://doi.org/10.1038/nbt.1511> PMID: 19029910
60. Cox J, Neuhauser N, Michalski A, Scheltema RA, Olsen J V., Mann M. Andromeda: A peptide search engine integrated into the MaxQuant environment. *J Proteome Res.* 2011; 10(4). <https://doi.org/10.1021/pr101065j> PMID: 21254760