

Article

Open Access

Discovery of a wild, genetically pure Chinese giant salamander creates new conservation opportunities

Jing Chai^{1, #}, Chen-Qi Lu^{1, 10, #}, Mu-Rong Yi^{1, 10, #}, Nian-Hua Dai², Xiao-Dong Weng², Ming-Xiao Di², Yong Peng³, Yong Tang³, Qing-Hua Shan³, Kai Wang⁴, Huan-Zhang Liu⁵, Hai-Peng Zhao⁶, Jie-Qiong Jin¹, Ru-Jun Cao^{1, 10}, Ping Lu², Lai-Chun Luo⁷, Robert W. Murphy^{1, 8, *}, Ya-Ping Zhang^{1, *,}, Jing Che^{1, 9, *}

¹ State Key Laboratory of Genetic Resources and Evolution, Kunming Institute of Zoology, Chinese Academy of Sciences, Kunming, Yunnan 650223, China

² Institute of Biological Resources, Jiangxi Academy of Sciences, Nanchang, Jiangxi 330096, China

³ Jiangxi Jiulingshan National Nature Reserve, Jing'an, Jiangxi 330600, China

⁴ Sam Noble Oklahoma Museum of Natural History & Department of Biology, University of Oklahoma, Norman 73072, USA

⁵ The Key Laboratory of Biodiversity and Conservation of Aquatic Organisms, Institute of Hydrobiology, Chinese Academy of Sciences, Wuhan, Hubei 430072, China

⁶ School of Life Science, Henan University, Kaifeng, Henan 475001, China

⁷ Jing'an County Bureau of Agriculture and Rural Affairs, Jing'an, Jiangxi 330600, China

⁸ Centre for Biodiversity and Conservation Biology, Royal Ontario Museum, Toronto, Ontario M5S 2C6, Canada

⁹ Yunnan Key Laboratory of Biodiversity and Ecological Security of Gaoligong Mountain, Kunming Institute of Zoology, Chinese Academy of Sciences, Kunming, Yunnan 650223, China

¹⁰ Kunming College of Life Science, University of the Chinese Academy of Sciences, Kunming, Yunnan 650204, China

ABSTRACT

Effective conservation of threatened biota relies on accurate assessments and scientific guidance. As an unfortunate example, Chinese giant salamanders (*Andrias*, CGS) remain critically endangered in nature. Misguided conservation efforts, e.g., commercial propagation and releasing of millions of likely non-indigenous or interspecific hybrids, have further compromised conservation initiatives. Limited information on wild populations of CGS poses a significant conservation challenge. Following 18-month long field monitoring, we now report the discovery of a wild population of CGS in a closed

nature reserve in Jiangxi Province, China. Genomic assessments reveal its genetic distinctiveness and do not detect genetic admixture with other species. Based on morphological and molecular evidences, we describe this CGS as a new species *Andrias jiangxiensis* **sp. nov.** This is the only known species of CGS today with a genetically pure, reproducing, *in situ* population. This discovery emphasizes the important role that closed nature reserves play in

This is an open-access article distributed under the terms of the Creative Commons Attribution Non-Commercial License (<http://creativecommons.org/licenses/by-nc/4.0/>), which permits unrestricted non-commercial use, distribution, and reproduction in any medium, provided the original work is properly cited.

Copyright ©2022 Editorial Office of Zoological Research, Kunming Institute of Zoology, Chinese Academy of Sciences

Received: 10 March 2022; Accepted: 22 April 2022; Online: 29 April 2022

Foundation items: This work was equally supported by the STS Program of Chinese Academy of Sciences, and the Strategic Priority Research Program of Chinese Academy of Sciences (XDB31000000). The Animal Branch of the Germplasm Bank of Wild Species, Chinese Academy of Sciences (Large Research Infrastructure Funding), and Jiangxi Academy of Sciences (2021YSBG50008) partially supported it
*Authors contributed equally to this work

*Corresponding authors, E-mail: chej@mail.kiz.ac.cn; zhangyp@mail.kiz.ac.cn; bob.murphy@utoronto.ca

protecting species, and the necessity of integrating long-term field monitoring and genetic assessments. It sets a new pathway for discovering and conserving endangered species, especially for those biotas that are similarly being extirpated by anthropogenic translocations and overexploitation.

Keywords: Conservation; Human translocation; Genetic homogenization; Field monitoring; Taxonomy

INTRODUCTION

Effective conservation of threatened biota requires accurate assessments of taxonomy, population distinctiveness, and evolutionary processes, among other data (Crandall et al., 2000; Fraser & Bernatchez, 2001; May, 1990). Such information leads to forming effective management units and conservation decisions (Crandall et al., 2000; Fraser & Bernatchez, 2001). Unfortunately, many critically endangered species are facing extinction in the wild before being assessed. This is especially concerning in the current Anthropocene defaunation that is being driven by habitat destruction, overexploitation, anthropogenic translocation, and climate change (Liu & Weng, 2014; Shaffer et al., 2015; Wang et al., 2021). Very concerning, misinformed conservation initiatives may exacerbate this unfortunate trend (Forcina et al., 2021; Yan et al., 2018).

The mismanagement of Chinese giant salamanders (*Andrias*, CGS) provides a tragic example of species being extremely endangered in nature, while millions exist in overstocked farms (Cunningham et al., 2016; Lu et al., 2020a; Turvey et al., 2018; Yan et al., 2018). Attaining a body length of almost 2 meters and weighing up to 95kg, the enigmatic CGS are the world's largest living amphibians (Zhang et al., 2002). Occupying a prominent place in the conservation of global biodiversity, they appear in Appendix I of CITES (CITES, 2021), are listed as Critically Endangered by the IUCN (Liang et al., 2004), and in China have "Class II" protection (National Forestry and Grassland Administration of China, 2021).

Great effort and expense have been spent to save CGS. Nature reserves have been established since 1980s (Ministry of Ecology and Environment of the People's Republic of China, 2017), *ex situ* propagation has been pushed since the first report of artificial breeding (Yang & Liu, 1978), and population augmentations have been sanctioned since 2002 (Shu et al., 2021). These initiatives assumed CGS are one species, but recent studies have revealed that there are from five to eight genetically distinct evolutionary species (Liang et al., 2019; Yan et al., 2018). Although *A. davidianus* (Blanchard, 1871) and *A. sligoi* (Boulenger, 1924) had been described, the limited information of both species could not inform any conservation initiatives. The genetic identity of *A. davidianus* remains uncertain because two evolutionary species (clades B and C of Yan et al., 2018) occur proximate to the type locality (Blanchard, 1871), and no wild population has been reported around the regions during the past 20 years. Further complicating efforts, the type locality of *A. sligoi*

is unknown because the holotype was a translocated animal obtained in the Hong Kong Botanical Gardens (Boulenger, 1924; Turvey et al., 2019). Although the matrilineal identity of *A. sligoi* was assigned to clade D (Turvey et al., 2019; Yan et al., 2018), a handful of wild individuals in its supposed range were verified as translocated species from Shaanxi while the farm-bred ones in Guizhou were genetically polluted quite extensively (Turvey et al., 2019; Yan et al., 2018). Thus, both named species have no genetically verified living population either in the wild or in captivity.

China has established 47 nature reserves since the 1980s to protect CGS and their habitats (Ministry of Ecology and Environment of the People's Republic of China, 2017). However, most reserves have inadequate investigations and assessments of their biota. Field surveys from 2013 to 2016 performed mostly outside of reserves found only 24 individuals of CGS in the wild (Turvey et al., 2018). The surveys covered 97 counties, and averaged 7 person-days per county per year (3.12 person-hours of active searching/county/year, and 6.88 person-days of passive searching/county/year). Unfortunately, these are biased assessments: Guizhou had more than 34% of total surveyed sites, which exceeded efforts in the other 15 provinces (Turvey et al., 2018). Further, no historical records of CGS existed for about one third of the surveyed counties, which were selected by habitat suitability modelling. The unsurprising absence of CGS in these areas magnified rarity. Thus, the extent of local extirpation from nature remains uncertain.

Extremely successful *ex situ* propagation has occurred since the 2000s almost exclusively in commercial farms (Cunningham et al., 2016). This led to artificial interspecific hybridization via the translocation of non-indigenous salamanders before the existence of multiple species was documented, such as in Guizhou (Yan et al., 2018). Even worse, over 280 000 farm-bred CGS have been released back into the wild without concerns of their genetic identity (Lu et al., 2020a; Shu et al., 2021; Turvey et al., 2018; Yan et al., 2018). Because of potential high profits in farming CGS, illegal activities resulted in a "salamander rush" (Wang et al., 2004; Zhang et al., 2002), analogous to the infamous California Gold Rush of 1848–1855. The existence of five to eight genetically distinct evolutionary species (Liang et al., 2019; Turvey et al., 2019; Yan et al., 2018) and extensive genetic admixture due to anthropogenic translocations (Yan et al., 2018) complicate conservation initiatives.

Past conservation efforts based on the "one species notion" have been ineffective, and both the described and undescribed species of CGS in the wild are suffering from limited information on their genetic identity, population size, distribution, habitat characteristics and other essential aspects of their natural history. Do wild populations free of genetic pollution still exist? To save the species, it is necessary to counter past mistakes, and in doing so, to possibly set a roadmap for saving other endangered species.

Taking new approaches, we focused field surveys in closed nature reserves within the CGS' historically known distribution, and in areas largely void of commercial CGS farming. Based on Passive Integrated Transponder (PIT) tags and genetic assessments for captured individuals, we discovered a wild,

indigenous population of CGS free of genetic pollution in a closed nature reserve in Jiangxi, China. This finding fosters hope for saving CGS and provides the first opportunity for investigating the status of a genetically pure, wild CGS. Herein, we report long-term field monitoring that assesses the natural history, population distinctiveness and morphology of CGS and lay a foundation of effective conservation.

MATERIALS AND METHODS

Field surveys

Long-term field monitoring surveys were conducted from September 2020 to March 2022, in a protected area in Jiulingshan National Nature Reserve, Jing'an County, Jiangxi, China. Our surveys covered periods of peak-activity of juveniles and adults (May–October) (Okada et al., 2008; Turvey et al., 2018), and the initial appearance of newly hatched larvae (Liang et al., 2019; Wang et al., 2017). Captured individuals were PIT tagged and then released at the location of capture. We also conducted field surveys using both active and passive searching methods outside of the protected area but within the historical distribution in Jing'an County, which is densely populated by humans (Figure 1). To avoid poaching and destruction of habitat, we do not provide detailed locality data out of the nature reserve.

Sample collection

Tissue collection mainly involved cutting a small piece of skin from the tail margin. A total of 118 individuals, including 68 juveniles, 40 adults and 10 larvae were sampled in the wild. We also randomly sampled 53 individuals from two farms out of the nature reserve. All sampled tissues were preserved in 95% ethanol and subsequently stored at -80°C .

For the later morphological comparisons, four specimens were collected from a farm based on the prior genetic assessments (see Methods), and euthanized using benzocaine. These specimens were dissected to determine sex, and liver tissue was taken. The specimens were then fixed with 10% formalin for 72 hours and subsequently transferred to 75% ethanol. Voucher specimens were deposited in the Museum of the Kunming Institute of Zoology (KIZ), Chinese Academy of Sciences (CAS).

Laboratory protocols

Total genomic DNA was isolated from tissue samples using the standard three-step phenol-chloroform extraction method. A mitochondrial DNA (mtDNA) fragment of the gene encoding cytochrome oxidase subunit I (*COI*) was sequenced for all individuals, and used to assigned individuals to mtDNA matriline A–E, or U1–U2 (Yan et al., 2018).

As the genome size of CGS is about 50 Gb and a reference genome was not available, we used reduced-representation genome sequencing (RRGS) to obtain genomic sequence data, following the protocols by Yan et al. (2018). After the verification of matriline by mtDNA (see Methods), libraries for 28 individuals were successfully constructed and sequenced, including 18 wild-caught and 10 farm-bred individuals. Data gathering used Specific Locus Amplified Fragment sequencing (SLAF-seq) (Sun et al., 2013). Laboratory work was performed

using the protocol described previously (Yan et al., 2018). Reduced complexity libraries were created with genomic DNA using EcoRV-HF restriction enzyme digestions.

Genetic structure analyses

Genetic structure analyses combined SLAF sequences for clades A–E (Yan et al., 2018) and the RRGs data from Jiangxi. All analyses followed the pipeline of Yan et al. (2018). Quality control for raw SLAF sequences involved removing restriction enzyme cutting sites, construction of consensus loci, genotype calling, SNP-filtering, genotype clustering and population structure visualization.

We inferred the phylogenetic tree based on SNPs utilizing concatenation methods, which were performed using maximum likelihood (ML) in RAxML v.8.1.15 (Stamatakis, 2014). The ML analyses were executed using 100 rapid bootstrap inferences with a thorough ML search using the GTRGAMMA model.

We used a Principal Coordinate Analysis (PCoA) to visualize population structure based on the genomic SNP dataset using GCTA v1.25.3 (Yang et al., 2011). We inferred individual ancestries of CGS using ADMIXTURE v1.23 (Alexander et al., 2009). We sampled one SNP per contig from the original VCF files and filtered this subset by excluding sites with missing genotypes or with a minor allele frequency ≥ 0.01 . ADMIXTURE was run with 10 000 bootstrap resampling at all K values from 1 to 8. The replicate with the highest biological meaning was assumed to have the lowest observed cross validation (CV) error. The PCoA and ADMIXTURE analyses defined six genetically distinct species, which corresponded to clades A, B, C, D, E, and U2. The population from Jing'an County was assigned to clade U2.

Morphological data

Except for one new trait (suborbital distance, SOD), morphological terminologies mainly followed Turvey et al. (2019). Morphological measurements were taken as follows: snout–vent length (SVL), measured from tip of snout to posterior edge of vent; total length (TTL), measured from tip of snout to tip of tail; tail length (TAL), measured from posterior edge of vent to tip of tail; tail height (TAH), greatest height of tail including tail fin; head length (HL), measured from rear of mandible to tip of snout; head width (HW), measured at widest point; greatest diameter of eye (EL); widest diameter of naris (NL); interocular distance (IOD), shortest distance between orbital borders; distance from front of eye to nostril (END); suborbital distance (SOD), measured as vertical distance from inferior edge of eye to inferior edge of upper lip; internarial distance (IND); distance between axillae on left-hand side of specimen (AXD); length of forelimb (FLL), measured from point of limb insertion to tip of longest finger; length of posterior limb (PLL), measured from point of limb insertion to tip of longest toe; first finger length (FI), measured from base of second finger to tip of first finger; second finger length (FII), measured from base of first finger to tip of second finger; third finger length (FIII), measured from base of second finger to tip of third finger; fourth finger length (FIV), measured from base of third finger to tip of fourth finger; first toe length (TI), measured from base of second toe to tip of first toe; second

toe length (TII), measured from base of first toe to tip of second toe; third toe length (TIII), measured from base of second toe to tip of third toe; fourth toe length (TIV), measured from base of third toe to tip of fourth toe; fifth toe length (TV), measured from base of fourth toe to tip of fifth toe. With the exception of SVL, TTL, TAL, and AXD, which were measured with a tape ruler to the nearest 1 mm, all remaining measurements were taken with a digital caliper to the nearest 0.1 mm.

In addition, morphological data of congeners were obtained from literature, and museum abbreviations included the following: Muséum national d'Histoire naturelle, Paris, France (MNHN); and the Natural History Museum, London, U.K. (BMNH).

Interviews

We conducted 50 interviews from within 1 km of surveyed rivers in Jing'an County following Tapley et al. (2017). As the selling prices had fallen substantially across China, and the farm-bred offspring of CGS are legal for human consumption in China, CGS is no longer considered a luxury food, and is even available in places such as Walmart. Some interviewed people admitted they had eaten CGS one or two times out of curiosity, but not as a staple. Thus, we added: "do you and your family have the habit of eating CGS" to assess local market demand. We also interviewed farm owners for information on farming. Because some local people stated they could distinguish the indigenous and introduced CGS species by morphological traits, we also asked if the farms had introduced CGS species, and if so, where they came from, and if not, their reasons for breeding indigenous species only.

RESULTS

Discovery of a wild CGS population

According to our 18-month field monitoring, we discovered a native, wild, reproducing population in Jiulingshan National Nature Reserve, Daqi Mountain, Jiangxi, China (Figures 1, 2). Covering 6.50 km of riverine habitat with efforts of 146.40 person-hours, we found 291 juveniles/adults with body lengths of 23–85 cm and masses of 95–4365 g (Figures 1, 2; Supplementary Table S1). The searching efforts for juveniles and adults represented a catch-per-unit-effort (CPUE) of 0.50 hour/individual (Figure 2A; Supplementary Table S1). An estimation of population size awaits further monitoring and additional surveys outside the current range. Notwithstanding, the discovery of various sized individuals and their rates of recapture (22.52%) inferred a substantial population size in the nature reserve (Supplementary Table S1). Further, the discovery of 524 newly hatched larvae in two continuous years documented reproduction and identified critical breeding caves in need of protection (Supplementary Table S2). The activity period of newborn larvae indicated that their initial feeding occurred from December to February, peaking in late January (Figure 2B, C; Supplementary Table S2). In contrast, CGS surveys out of the reserve in two nearby densely populated towns (Guanzhuang and Zhongyuan) required greater effort (CPUE=17 hours/individual; Figure 1). We did

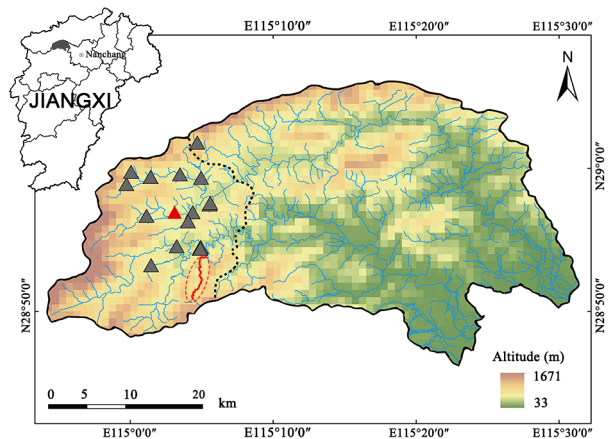


Figure 1 Map of survey localities in Jing'an County, northwest of Jiangxi, China

The west part of black dashed line displays the historical distribution areas of CGS, upstream of River Liao. Red dashed line circles Daqi Mountain, which is closed to the public. Grey triangles indicate 16 sites surveyed without detection of individuals, while the red triangle and red line display the searching sites with detections.

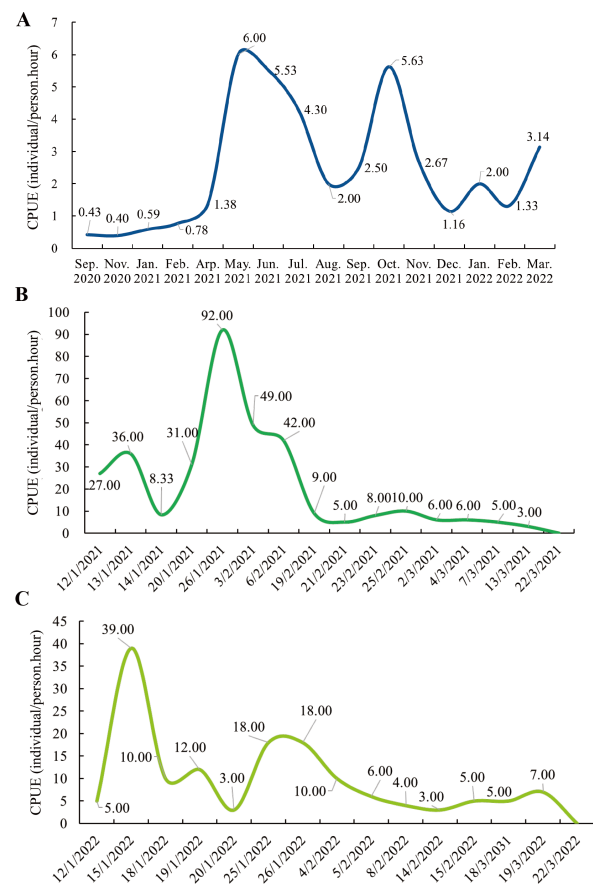


Figure 2 Results of field-monitoring surveys in Daqi Mountain, Jiangxi Jiulingshan National Nature Reserve (Sep. 2020–Mar. 2022)

A: Capture per person-hour of juveniles and adults during Sep. 2020–Mar. 2022. B, C: Activity periods of newborn larvae displayed by capture per person-hour in 2021 and 2022.

not observe poaching activities, such as nocturnal fishing, bow-hooks with baits, nets, traps in the streams, or CGS body parts adjacent to streams. Overall, our results indicated a substantial population size, and underscored the effectiveness and necessity of closed national nature reserves for the *in situ* protection of CGS.

Genetic distinctiveness

Genetic assessments suggested that wild-caught CGS preserved their genetic integrity. DNA barcoding of 118 nondestructively sampled individuals revealed that all possessed mtDNA haplotypes of clade U2 (Figure 3A; Supplementary Table S3), indicating no other CGS species had been introduced. These haplotypes were detected previously only in commercial farms (Yan et al., 2018), and they corresponded to clade D of Liang et al., 2019. Clade U2 diverged from its sister clade E from Anhui ca. 4.95 million years ago (Ma) (Yan et al., 2018).

As no other evolutionary species had been introduced, 18 wild-caught individuals, including seven adults and 11 juveniles were randomly chosen and sequenced for genomic SNPs. Analyses based on 52 556 SNPs, including ML tree, assessment of genetic structure and PCoA, supported the population's genetic distinctiveness (Figure 3B–D). The ML tree resolved clades A, B, C, D, E and U2 as distinct groups

(Figure 3B), but the PCoA located one individual of clade C from the Pearl River away from two other individuals (Figure 3C, D). Genetic clustering (K=2–8) based on genomic SNPs from six clades by ADMIXTURE analysis indicated seven distinctive groups, in which the best K=7 also supported divergence within clade C. As we only reported the replicate with the highest biological meaning that was consistent with the mtDNA clades, subgroups potentially existing within clades B, C and E (K=6–8) awaited more samples for further determination (Figure 3C–E). Notwithstanding, all K values did not detect genetic mixing of clade U2 and the other species (Figure 3E), indicating they were neither affected by introductions from large-scale commercial farms, nor the hybridization by artificial propagation.

We located two small-scale farms in the towns Guanzhuang and Zhongyuan, which lie within the historical distribution area of CGS and out of the nature reserve. DNA barcoding verified that all 53 individuals in these farms also were from clade U2 (Supplementary Table S3). SNP analyses of 10 randomly chosen individuals indicated that they were purebred individuals (Figure 3B–E).

The Jiangxi CGS is paraphyletic with respect to the clades A–E, and it differs genetically and morphologically from its Chinese congeners (see below). Thus, herein we describe the

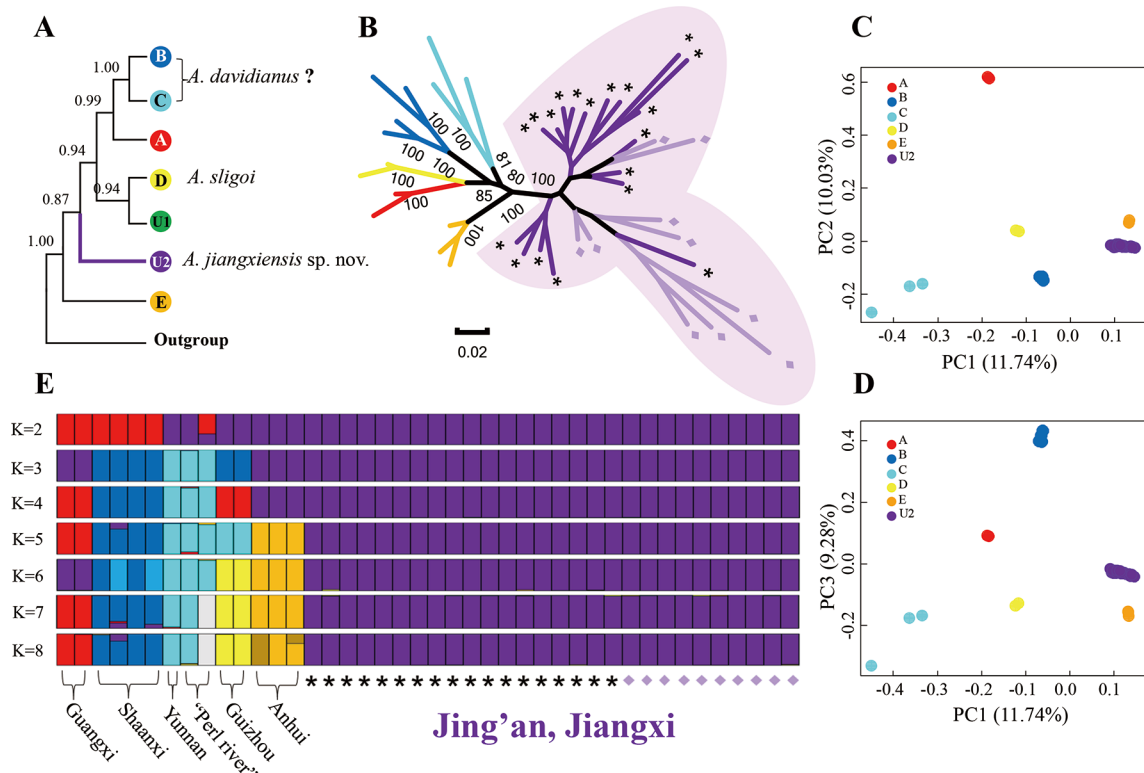


Figure 3 Genetic distinctiveness of CGS from clade U2 found in Jing'an County, Jiangxi, China

A: A simplified phylogeny based on *COI* of mtDNA modified from Yan et al. (2018), in which clade U2 represents haplotypes found in Jing'an County, Jiangxi. The clade to which *A. davidianus* belongs remains uncertain. Clade D indicates the haplotypes of *A. sligoi* according to the analyses by Turvey et al. (2019). B: Maximum Likelihood (ML) network based on genomic SNPs for six clades. Light purple background marks the 28 individuals of clade U2. C, D: PCoA plots based on genomic SNPs for six clades. E: Genetic clustering (K=2–8, best K=7) based on genomic SNPs from six clades by ADMIXTURE analysis. Asterisks label 18 wild-caught individuals including larvae, juveniles, and adults from Daqi Mountain, diamonds in light purple indicate 10 farm-bred individuals. Colors in all figures correspond with the mtDNA clades.

Jiangxi CGS as a new species. This is now the only species of CGS known to have a genetically pure, reproducing population in the wild.

Taxonomic account

***Andrias jiangxiensis* sp. nov.** Lu, Wang, Chai, Yi, Peng, Murphy, Zhang, and Che (Figure 4; Supplementary Table S4)

Holotype: KIZ 037731, adult male (Figure 4), *ex situ* from first generation of offspring of the wild-caught parents, which were collected in Guanzhuang Township, Jing'an County, Jiangxi, China.

Paratypes: KIZ 037728, 037730 (adult females), KIZ 037729 (adult male), all with the same collection information as the holotype.

Diagnosis: *Andrias jiangxiensis* sp. nov. can be distinguished from its congeners by a combination of the following characters: (1) head length almost equal to width; (2) head and lower jaw relatively smooth, with small tubercles arranged irregularly; (3) lateral neck fold discontinuous with body fold at forelimb insertion; (4) finger III distinctly longer than finger I; and (5) dorsum red-brown or yellow-brown in life, with large, irregular black patches.

Comparisons: *Andrias jiangxiensis* sp. nov. can be distinguished from *A. japonicus* (Temminck, 1836) by having smoother head with indistinct tubercles (vs. dense, distinct, large tubercles). Considering that no population has been genetically identified as both pure *A. davidianus* and *A. sligoi*, and that farm-bred individuals exhibit genetic contamination (Yan et al., 2018), to avoid confusion due to translocated animals or hybrids, morphological comparisons are constrained to holotypes only. Specifically, *Andrias jiangxiensis* sp. nov. differs from *A. davidianus* (holotype MNHN-RA-0.7613, images posted on: <http://coldb.mnhn.fr/catalognumber/mnhn/ra/0.7613>) by having a smooth head and lower jaw with indistinct, small, irregularly arranged tubercles (vs. head and lower jaw rough, with distinct, regularly arranged tubercles); from *A. sligoi* (holotype BMNH 1945.11.7.1., images in Turvey et al. (2019)) by having a smooth skin on the snout and around eyes (vs. with numerous distinct tubercles), and a distinct finger length formula (finger III distinctly longer than finger I vs. finger III equal to finger I).

Description of holotype: Adult male, body size relatively small, SVL 381 mm, TTL 589 mm; tail muscular, thick at base, gradually flattening posteriorly and distally; dorsal fin well developed, ventral fin much reduced, maximum tail height 76.2 mm; tail short, TAL 208 mm, TAL 54.6% SVL, 35.3% TTL. Head dorsally compressed, wide, HL 102% HW; snout truncated, blunt, widen gradually posteriorly, projecting beyond lower jaw in ventral view; jaw muscular, distinctively widen from snout; jaw muscles continuous with two ovoid, convex temporal muscles dorsally posterior to each eye; nostrils small, NL 1.5 mm, anteriorly and laterally positioned, eye-nare distance 27.6 mm. Eyes small, rounded, EL 4.2 mm, 2.8 times NL, protuberant in life, lacking eyelids; dorsolaterally positioned, wide apart, IND 31.6% IOD, EL 44.2% SOD. Mouth large, corner almost reaching mid temporal protuberances; supralabial fold distinct; extending from

posterior edge of mouth to axillary. Skin of head and lower jaw mostly smooth with small tubercles scattered dorsolaterally on temporal head and neck in life, all distributed irregularly, gradually increasing in numbers posteriorly; tubercles indistinct after preservation. Transverse gular fold present, without distinct glands.

Body robust, dorsally compressed but less than head, elongated, AXD 34.1% TTL; costal grooves in life, less distinct after preservation; vertebral groove distinct on posterior 3/4 of body; neck fold strongly developed, from corner of mouth to posterosuperior axillary; lateral body folds strongly developed, anterior end inferior and discontinuous from neck fold at limb insertion point, extending to caudal base; single dorsolateral series of large tubercles just above base of lateral fold on each side of vertebrate from neck to caudal base, more distinct in life, barely visible after preservation; remaining body skin mostly smooth in life.

Limbs short, robust, dorsoventrally compressed, with distinct lateral skin folds, more prominent on posterior limbs; hindlimbs relatively longer and stronger than forelimbs, FLL 10% TTL, PLL 12% TTL. Hands and feet dorsally compressed, finger and toe tips enlarged, rounded; finger and toe tips and ventral hands and feet covered with dark carotin layer; four fingers, no webbing, length formula II>III>I>IV, lateral skin fringe distinct on finger IV, continuous with lateral limb fold; five toes, with rudimentary webbing, toe length formula III>IV>II>V>I, toe III, IV, and V with stronger lateral fringes.

Coloration of holotype: In life (Figure 5), dorsum red-brown, with large continuous or discontinuous irregular black patches, gradually decreasing and broken from midbody to head and tail, a few black spots scattered between large patches; ventral surface grayish brown, with black spots scattered along the mandibular margin only; small white spots with tan edge throughout the body; grayish white around eyes, iris gold with black markings. In preservative (Figure 4), bright tints faded, dorsum and abdomen faded to grayish brown and gray, respectively, white spots with tan edge, black patches and spots remain distinct; horny epidermis on tips of fingers and toes as well as palms and soles brown.

Variation: No significant differences in morphology and coloration were found among all adult specimens of the type series, or between genders. However, a distinctive ontogenetic shift existed in coloration. Juveniles less than 30 cm long were mostly spotted (Figure 6A) instead of having larger patches; after exceeding 40 cm, their coloration pattern resembled the type specimens (Figure 6B).

Etymology: The specific epithet "*jiangxiensis*" refers to the type locality of the new species in Jiangxi, China. It denotes the endemicity of the new species to Jiangxi based on our detailed population surveys. We suggest Jiangxi Giant Salamander as its English common name, and 江西大鲵 (Pinyin: Jiāng Xī Dà Ní) as its Chinese common name.

Distribution and natural history: Questionnaires with local residents suggest that this species was densely distributed in two towns of Jing'an County before the 1990s. Due to commercial breeding, some indigenous purebred individuals served as breed stock in some local small farms. According to our field monitoring, the wild population of this species

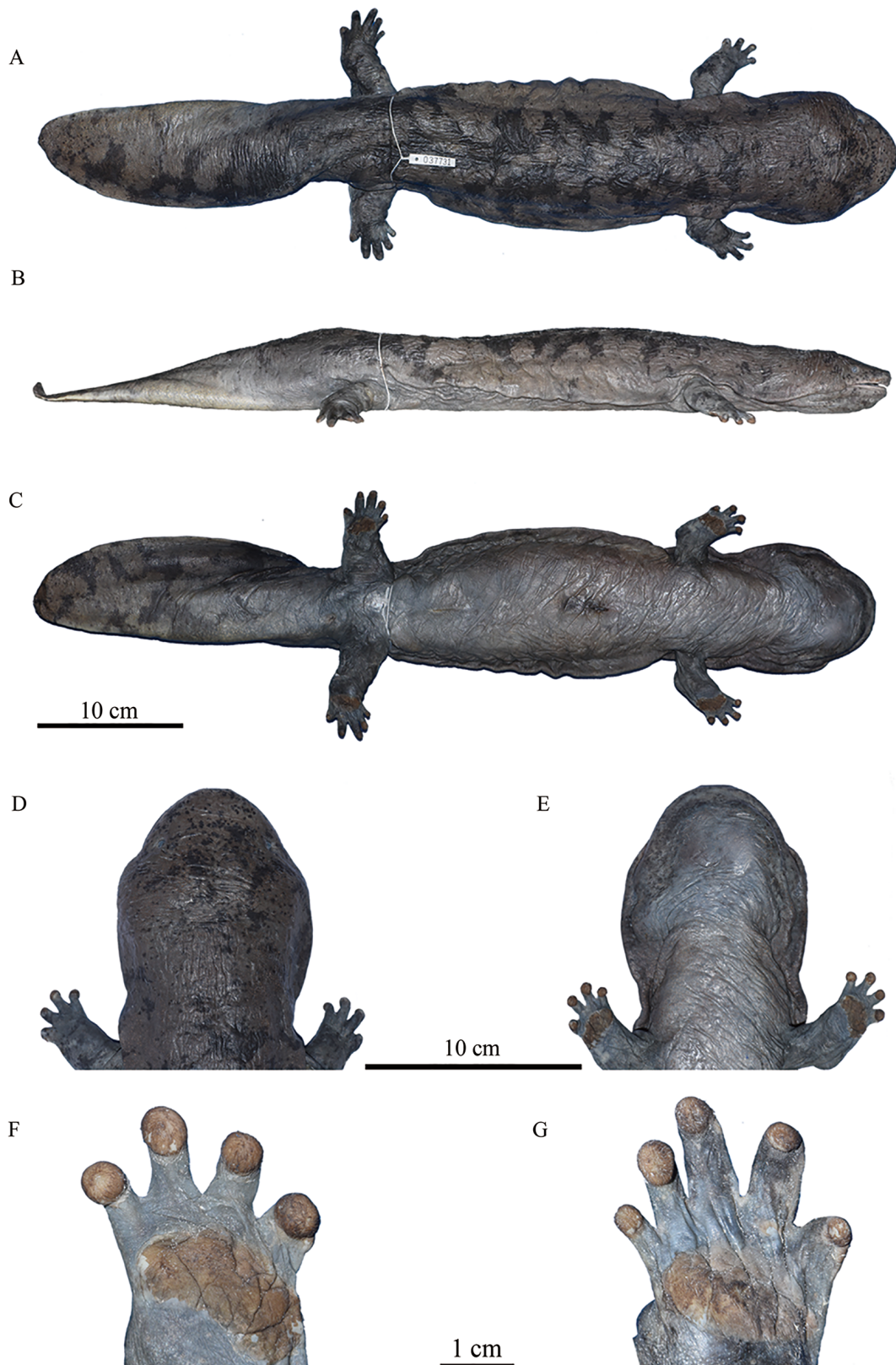


Figure 4 Holotype of *Andrias jiangxiensis* sp. nov. (KIZ 037731) in preservative

A–C: Holotype of *A. jiangxiensis* sp. nov., in dorsal (A), lateral (B), and ventral (C) views. D, E: Dorsal (D) and ventral (E) views of head of holotype of *A. jiangxiensis* sp. nov. F, G: Ventral view of the left hand (F) and left foot (G) of the holotype of *A. jiangxiensis* sp. nov. Photos by Chen-Qi Lu.

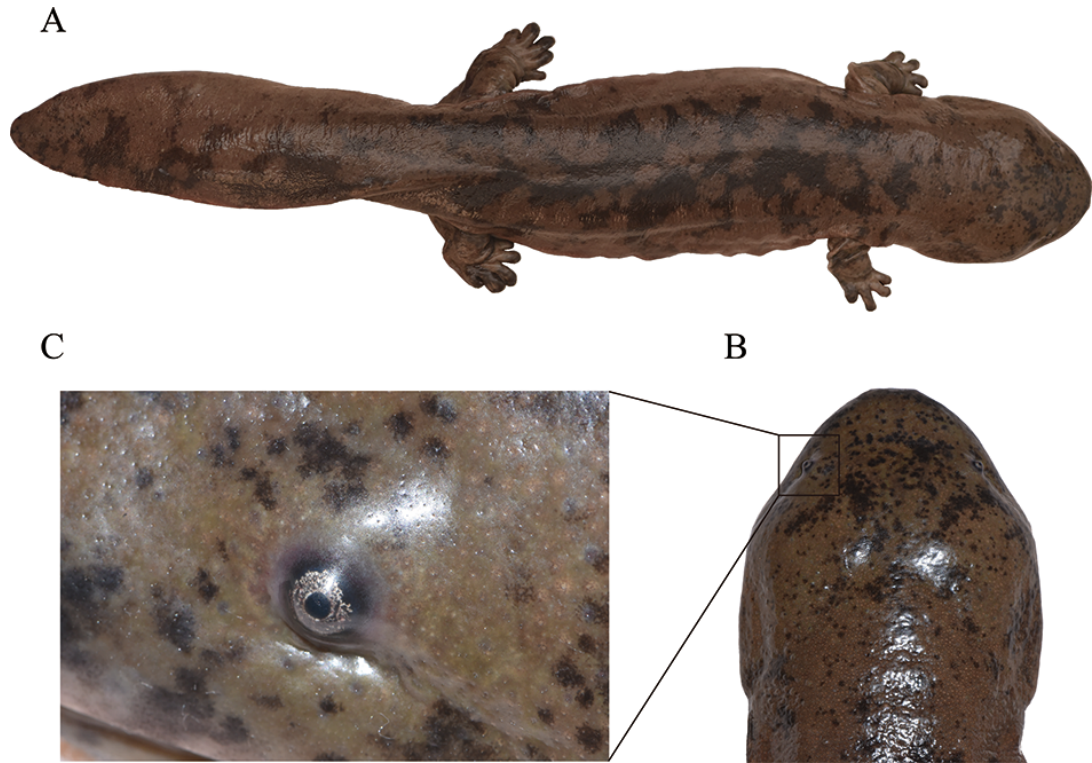


Figure 5 The holotype of *Andrias jiangxiensis* sp. nov. (KIZ 037731) in life

A–C: Coloration of dorsum of whole body (A), head (B), and enlarged view (C) of left periocular area. Photos by Chen-Qi Lu.

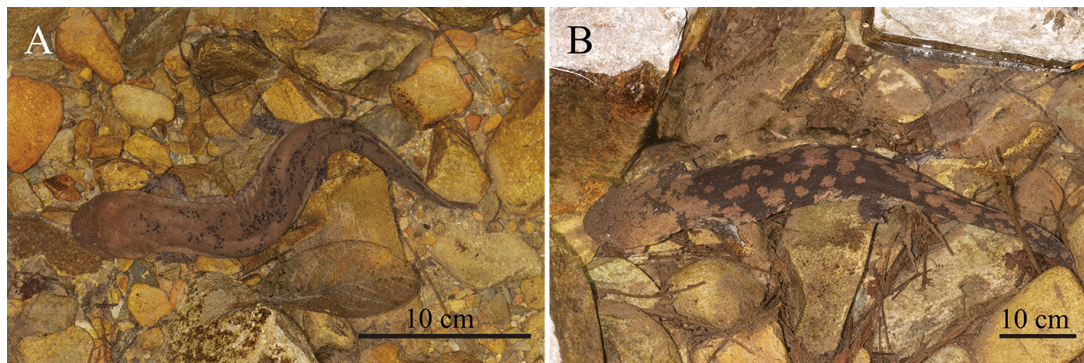


Figure 6 Ontogenetic variation in coloration pattern

A: Coloration of dorsum with spotted pattern in a juvenile with body length of ~20 cm. B: Coloration of dorsum having larger patch patterns in an adult with body length over 50 cm. Photos by Mu-Rong Yi.

appears to occur only in Jiulingshan National Nature Reserve. This protected area contains intact habitat, including forested mountains and streams without villages and human activities. It also contains a diversity of teleosts, amphibians, non-avian reptiles, birds and a few mammals.

During the field surveys from September 2020 to March 2022, over 291 wild individuals of adults and juveniles were found in medium-sized, pristine mountain streams with 8–10 m wide, water depth 0.1–1.5 m, and with rocky substrate (Figure 7A, B). Many natural caves formed by fallen wood, tree roots and cracks among rocks on both sides of streams provide hiding places for the new species. As a nocturnal species, *A. jiangxiensis* sp. nov. forages at night. Dorsal color patterning makes it blend well with the rocks at the bottom of

the stream, making it difficult to find in flowing water. Vomit and excrement analyses of five wild individuals in July 2021 revealed fish, frogs, aquatic insects, and crustaceans in the natural diet.

Two breeding caves were found in a backwater bay of the stream in January 2021 (Figure 7C, D) and January 2022. A large number of larvae gathered at the entrance, emerging most likely two months after hatching (Figure 7C, D). Larvae sightings peaked in February and exceeded 100 individuals per day. This continued until March, when no more new larvae emerged from the cave, and the larvae outside began to scatter throughout the stream. Combined with a questionnaire to local giant salamander farmers, we speculate that the breeding season of *A. jiangxiensis* sp. nov. occurs in mid-



Figure 7 The habitat of *Andrias jiangxiensis* sp. nov. in Daqi Mountain, Jing'an County, Jiangxi, China

A, B: Summer (A) and winter (B) scene of 8–10 meters-wide stream with excellent vegetation coverage. C: A breeding cave for *A. jiangxiensis* sp. nov. found in a backwater bay of the stream. Red arrow indicates the exit of the cave. D: Enlarged area near the exit of the cave. Dashed circles in cyan indicate six larvae of *A. jiangxiensis* sp. nov., and the ones in white indicate the co-occurring shrimps and fishes. Photos by Mu-Rong Yi.

September.

Conservation: Our long-term field monitoring of *A. jiangxiensis* sp. nov. yielded only a single incident of a breeding, wild population in the protected area at Daqi Mountain, Jing'an County. This protected area has a riverine habitat of only 6.50 km in linear distance and 36.0 km² of area. The upstream water runs inconstantly throughout the year, as flash floods occur occasionally in summer and droughts often occur in the winter, which lead to frequent habitat fragmentations. The downstream habitat out of the nature reserve is blocked by a dam and is inhabitable to *A. jiangxiensis* sp. nov. due to anthropogenic activities. This small, isolated, and sometimes fragmented population is particularly vulnerable to environmental changes, and thus the species faces a great extinction threat. Therefore, following the IUCN criteria B1 (extent of occurrence less than 100 km², known to exist at only a single location, and extreme fluctuation of extent of occurrence) (IUCN, 2012), we recommend to classify *A. jiangxiensis* sp. nov. as Critically Endangered (CR), and we recommend to list the species as Class II protected in China, and to implement further assessments.

Local cultural values: Local cultural pride might have contributed positively to the conservation of indigenous species. Interviews near the survey sites found that most people did not often eat CGS, although nine out of 50 persons had eaten CGS one or two times from curiosity. Six of the 50 interviewed people in Jing'an County, including the towns Guanzhuang and Zhongyuan, could distinguish between the

indigenous and introduced CGS species by the shape of head and coloration of adults. They proudly said the indigenous species is “more beautiful” than others (Supplementary Dataset S1); one person described the indigenous species as having a smoother head without tubercles. This differed from negative cultural views of CGS reported in Shaanxi (Cunningham et al., 2016), indicating diverse cultural values across China.

We interviewed the owners of two small-scale farms adjacent to the field survey sites, which have existed for years (Supplementary Dataset S1). They did not cease activities following the dramatic slide in CGS prices from 3 000 RMB/kg (US \$470/kg) (Cheng & Zhang, 2015; Shu et al., 2021) to 60 RMB/kg (\$9/kg) after 2015. They had refused to use outside sources of CGS (Supplementary Dataset S1), even during the “salamander rush” involving large-scale salamander trading. Such small-scale farms in remote montane villages may be more likely to preserve purebred indigenous lineages than large commercial farms that frequently introduce and sell animals of unknown provenance. They can serve as effective targets for genetic screening, and as reservoirs for potential future population augmentation programs which should such be deemed necessary.

DISCUSSION

Our efforts found the only CGS, hitherto known to science, to have a genetically pure, reproducing *in situ* population in China. This discovery is most valuable, especially when the release programs without scientific guidance have caused

large-scale translocations of CGS (Shu et al., 2021; Turvey et al., 2018; Yan et al., 2018). The surveys in five localities from Anhui, Guangdong, Guizhou, Sichuan, and Zhejiang provinces revealed all captured individuals, including adults and larvae, were translocated animals (Shu et al., 2021; Turvey et al., 2018; Yan et al., 2018). Most of them were verified as released animals and even assigned to three or four different evolutionary species in one locality (Shu et al., 2021). The potential extinction of indigenous species accelerated our actions. The discovery of *A. jiangxiensis* gives hope that future investigations will reveal other new species and indigenous populations free of genetic pollution that can be conserved. Assessments of how many other wild populations and habitats exist within the CGS's historical distribution are urgently needed. However, such small, isolated populations are also more likely to be threatened with extinction (Mace et al., 2008), and protection plans and policies for *A. jiangxiensis* should be given priority. This requires greater collaboration between scientists and conservation management departments in both central and local governments. In addition, our interviews revealed the local cultural pride, which might contribute to the conservation of native biotas. This need to be strengthened by developing education and ecological tourism to promote the conservation.

Our analyses document the evolutionary distinctiveness and morphological differences of *A. jiangxiensis*. Although artificial interspecific hybridization has been rampant in commercial farms (Yan et al., 2018), genetically distinct species may not choose to hybridize in nature. As with other reports of hybrids having reduced fitness (Cauwelier et al., 2012; Gibeaux et al., 2018; Lu et al., 2020b; Powell et al., 2020), farm-bred hybrids of CGS might be suffering from severe reductions in fitness in F_1 or F_2 offspring. The potential genetic incompatibility in *ex situ* crosses of CGS can no longer be neglected, and it is especially critical that F_1 hybrids not be used henceforth to augment wild populations until the completion of testing for hybrid depression. This also leads us to the urgent need of the broad-scale genetic assessments to identify and PIT tag purebred animals for species-specific augmentation programs. As no genetically pure population of *A. davidianus* and *A. sligoi* has been identified, the new species can only be compared of morphologically with the holotypes of its two Chinese congeners. This problem challenges both scientific research and conservation activities, which need to be overcome in the future.

Our survey methods constitute a new pathway for future investigations. Methodologically, population genomics datasets yield assessments critical for conservation planning and implementation (Crandall et al., 2000; Hohenlohe et al., 2021). Currently, most genetic assessments for CGS were performed by using mtDNA (Liang et al., 2019; Shu et al., 2021), which can only indicate the matrilineal identities rather than the genetic admixture. Thus, it is necessary to employ genomic analyses to screen and identify individuals for conservation; clustering of genomic SNPs can detect extant population structure and identify hybridization (Nater et al., 2017; Schilling et al., 2018). Notwithstanding, population history and the drivers of speciation cannot be inferred without a reference genome and analyses of genomic data. The

detections of speciation with gene flow or recent divergence with isolation awaits further investigations based on more modeling and phylogenetic approaches (Martin et al., 2013; Momigliano et al., 2021).

Andrias jiangxiensis provides the first opportunity to investigate the life history of CGS. In contrast to the comprehensive assessments for Japanese giant salamander and North American hellbender (Hammerson & Phillips, 2004; Kaneko & Matsui, 2004), we had known little about the status of CGS in the wild, especially the habitat ecology and life history, as there is no report of stable wild populations. Fortunately, our efforts for *A. jiangxiensis* indicated that long-term field monitoring is crucial for documenting the natural history of juveniles, adults, and larvae. These data can reveal the key areas and seasons of feeding and reproduction, and form the guidance of effective conservation actions.

Finally, as opposed to habitats with easy anthropogenic disturbance, our monitoring highlights the roles closed nature reserves in remote montane areas play in future investigations. Our efforts (0.50 hour/individual) were far more successful than the previous surveys outside nature reserve across China (16 weeks/individual) (Turvey et al., 2018), and even more than those for the Japanese giant salamander (*A. japonicus*, 1.2 hours/individual, including both juveniles and adults) (Okada et al., 2008), and the North American hellbender (*Cryptobranchus alleganiensis*, 2.2 hours/individual) (Foster et al., 2008). This emphasized the importance of undisturbed habitats for the *in situ* protection. Efficient metabarcoding in such areas can discover other species also in need of evaluation and protection. Thus, our results form the foundation for evaluating the status of CGS and other biota, especially those similarly suffering from declines caused by anthropogenic translocations and consumption.

NOMENCLATURE ACTS REGISTRATION

The electronic version of this article in portable document format represents a published work according to the International Commission on Zoological Nomenclature (ICZN), and hence the new name contained in the electronic version is effectively published under that Code from the electronic edition alone (see Articles 8.5–8.6 of the Code). This published work and the nomenclature acts it contains have been registered in ZooBank, the online registration system for the ICZN. The ZooBank Life Science Identifiers (LSIDs) and the associated information can be viewed through any standard web browser by appending the LSID to the prefix <http://zoobank.org/>.

Publication LSID: urn:lsid:zoobank.org:pub:FAAC4B28-F8C8-4ADF-963E-5301A37DEB32

Andrias jiangxiensis LSID: urn:lsid:zoobank.org:act:02CBD190-DC5E-4087-939C-1BB1A24E8EEF

SCIENTIFIC FIELD SURVEY PERMISSION INFORMATION

Permission for field surveys of CGS in Jiangxi was approved by the Bureau of Fisheries, Department of Agriculture and Rural Affairs of Jiangxi. All fieldwork complied with protocols approved by the relevant forestry offices of Jing'an County,

and adhered to all legal requirements. The Kunming Institute of Zoology Animal Care and Ethics Committee approved all protocols of sampling collections and in-person interviews (approval No. IACUC 18029).

DATA AND CODE AVAILABILITY

Unique haplotypes of *COI* have been deposited in GenBank under accession Nos. ON150901 and ON150902. Reduced-Representation Genome Sequencing (RRGS) data of the Jiangxi giant salamander have been deposited in the Genome Sequence Archive (GSA) of the National Genomics Data Center (NGDC) at <https://ngdc.cncb.ac.cn/gsa/> with accession No. CRA006396.

SUPPLEMENTARY DATA

Supplementary data to this article can be found online.

COMPETING INTERESTS

The authors declare that they have no competing interests.

AUTHORS' CONTRIBUTIONS

J. Che, Y.P.Z., R.W.M. conceived and designed the research; J. Chai, C.Q.L., M.R.Y., N.H.D., X.D.W., M.X.D., Y.P., Y.T., Q.H.S., H.Z.L., H.P.Z., J.Q.J., R.J.C., P.L., and L.C.L. conducted field surveys and collected samples; J. Chai, C.Q.L. and M.R.Y. performed molecular work; C.Q.L., K.W. and M.R.Y. measured specimens, and analyzed data; J. Chai and C.Q.L. wrote manuscript, and J. Che, Y.P.Z., R.W.M. discussed and revised the manuscript. All authors read and approved the final version of the manuscript.

ACKNOWLEDGMENTS

We thank Prof. Wen-Xuan Cao for suggestions. Lu-Yang Zhang, Jun Lei, Zheng Li, Ming Jian, and Chuan He helped in the field; Yun-He Wu, Chuan-Xin Yu, Hao-Ping Yin, Shao-Bing Hou, and Wen-Jie Dong helped during lab work.

REFERENCES

Alexander DH, Novembre J, Lange K. 2009. Fast model-based estimation of ancestry in unrelated individuals. *Genome Research*, **19**(9): 1655–1664.

Blanchard E. 1871. On a new gigantic salamander (*Sieboldia Davidiana*, Blanch.) from western China. *Annals and Magazine of Natural History*, **8**(45): 212–214.

Boulenger EG. 1924. On a new giant salamander, living in the society's gardens. *Proceedings of the Zoological Society of London*, **94**(1): 173–174.

Cauwelier E, Gilbey J, Jones CS, Noble LR, Verspoor E. 2012. Asymmetrical viability in backcrosses between highly divergent populations of Atlantic salmon (*Salmo salar*): implications for conservation. *Conservation Genetics*, **13**(6): 1665–1669.

Cheng YL, Zhang ZW. 2015. Analysis of the current situation of Chinese giant salamander industry in Shaanxi province. *Scientific Fish Farming*, **31**(9): 3–4. (in Chinese)

CITES. 2021(2021-06-22). Convention on international trade in endangered species of wild fauna and flora. Appendices I, II and III. <http://www.cites.org/eng/app/appendices.php>.

Crandall KA, Bininda-Emonds ORP, Mace GM, Wayne RK, Crandall KA,

Bininda-Emonds ORP, et al. 2000. Considering evolutionary processes in conservation biology. *Trends in Ecology & Evolution*, **15**(7): 290–295.

Cunningham AA, Turvey ST, Zhou F, Meredith HMR, Guan W, Liu XL, et al. 2016. Development of the Chinese giant salamander *Andrias davidianus* farming industry in Shaanxi Province, China: conservation threats and opportunities. *Oryx*, **50**(2): 265–273.

Forcina G, Tang Q, Cros E, Guerrini M, Rheindt FE, Barbanera F. 2021. Genome-wide markers redeem the lost identity of a heavily managed gamebird. *Proceedings of the Royal Society B: Biological Sciences*, **288**(1947): 20210285.

Foster RL, Mcmillan AM, Breisch AR, Roblee KJ, Schranz D. 2008. Analysis and comparison of three capture methods for the eastern hellbender (*Cryptobranchus alleganiensis*). *Herpetological Review*, **39**(2): 181–186.

Fraser DJ, Bernatchez L. 2001. Adaptive evolutionary conservation: towards a unified concept for defining conservation units. *Molecular Ecology*, **10**(12): 2741–2752.

Gibeaux R, Acker R, Kitaoka M, Georgiou G, van Kruijsbergen I, Ford B, et al. 2018. Paternal chromosome loss and metabolic crisis contribute to hybrid inviability in *Xenopus*. *Nature*, **553**(7688): 337–341.

Hammerson G, Phillips C. 2004. *Cryptobranchus alleganiensis*. The IUCN Red List of Threatened Species 2004: e. T59077A11879843. <https://dx.doi.org/10.2305/IUCN.UK.2004.RLTS.T59077A11879843.en>.

Hohenlohe PA, Funk WC, Rajora OP. 2021. Population genomics for wildlife conservation and management. *Molecular Ecology*, **30**(1): 62–82.

IUCN. 2012. IUCN Red List Categories and Criteria: Version 3.1. 2nd ed. Gland, Switzerland and Cambridge, UK: IUCN, 32.

Kaneko Y, Matsui M. 2004. *Andrias japonicus*. The IUCN Red List of Threatened Species 2004: e. T1273A3376261. <https://dx.doi.org/10.2305/IUCN.UK.2004.RLTS.T1273A3376261.en>.

Liang G, Geng BR, Zhao EM. 2004. *Andrias davidianus*. The IUCN Red List of Threatened Species 2004: e. T1272A3375181. <http://dx.doi.org/10.2305/IUCN.UK.2004.RLTS.T1272A3375181.en>.

Liang ZQ, Chen WT, Wang DQ, Zhang SH, Wang CR, He SP, et al. 2019. Phylogeographic patterns and conservation implications of the endangered Chinese giant salamander. *Ecology and Evolution*, **9**(7): 3879–3890.

Liu YN, Weng Q. 2014. Fauna in decline: plight of the pangolin. *Science*, **345**(6199): 884.

Lu CQ, Chai J, Murphy RW, Che J. 2020a. Giant salamanders: farmed yet endangered. *Science*, **367**(6481): 989.

Lu Y, Sandoval A, Voss S, Lai Z, Kneitz S, Boswell W, et al. 2020b. Oncogenic allelic interaction in *Xiphophorus* highlights hybrid incompatibility. *Proceedings of the National Academy of Sciences of the United States of America*, **117**(47): 29786–29794.

Mace GM, Collar NJ, Gaston KJ, Hilton-Taylor C, Akçakaya HR, Leader-Williams N, et al. 2008. Quantification of extinction risk: IUCN's system for classifying threatened species. *Conservation Biology*, **22**(6): 1424–1442.

Martin SH, Dasmahapatra KK, Nadeau NJ, Salazar C, Walters JR, Simpson F, et al. 2013. Genome-wide evidence for speciation with gene flow in *Heliconius* butterflies. *Genome Research*, **23**(11): 1817–1828.

May RM. 1990. Taxonomy as destiny. *Nature*, **347**(6289): 129–130.

Ministry of Ecology and Environment of the People's Republic of China. 2017. Nature reserves catalog of China (2017). <http://www.mee.gov.cn/ywgz/zrstbh/zrbhdjg/201905/P020190514616282907461.pdf>. (in Chinese)

Momigliano P, Florin AB, Merilä J. 2021. Biases in demographic modeling affect our understanding of recent divergence. *Molecular Biology and Evolution*, **38**(7): 2967–2985.

Nater A, Mattle-Greninger MP, Nurcahyo A, Nowak MG, de Manuel M,

- Desai T, et al. 2017. Morphometric, behavioral, and genomic evidence for a new orangutan species. *Current Biology*, **27**(22): 3487–3498.e10.
- National Forestry and Grassland Administration of China. 2021(2021-02-08). Official release of the updated List of Wild Animals under Special State Protection in China. <http://www.forestry.gov.cn/main/586/20210208/095403793167571.html>. (in Chinese)
- Okada S, Utsunomiya T, Okada T, Felix ZI, Ito F. 2008. Characteristics of Japanese giant salamander (*Andrias japonicus*) populations in two small tributary streams in Hiroshima prefecture, western Honshu, Japan. *Herpetological Conservation and Biology*, **3**(2): 192–202.
- Powell DL, García-Olazábal M, Keegan M, Reilly P, Du K, Díaz-Loyo AP, et al. 2020. Natural hybridization reveals incompatible alleles that cause melanoma in swordtail fish. *Science*, **368**(6492): 731–736.
- Schilling MP, Gompert Z, Li FW, Windham MD, Wolf PG. 2018. Admixture, evolution, and variation in reproductive isolation in the *Boechera puberula* clade. *BMC Evolutionary Biology*, **18**(1): 61.
- Shaffer HB, Gidiş M, McCartney-Melstad E, Neal KM, Oyamaguchi HM, Tellez M, et al. 2015. Conservation genetics and genomics of amphibians and reptiles. *Annual Review of Animal Biosciences*, **3**: 113–138.
- Shu GC, Liu P, Zhao T, Li C, Hou YM, Zhao CL, et al. 2021. Disordered translocation is hastening local extinction of the Chinese giant salamander. *Asian Herpetological Research*, **12**(3): 271–279.
- Stamatakis A. 2014. RAxML version 8: a tool for phylogenetic analysis and post-analysis of large phylogenies. *Bioinformatics*, **30**(9): 1312–1313.
- Sun XW, Liu DY, Zhang XF, Li WB, Liu H, Hong WG, et al. 2013. SLAF-seq: an efficient method of large-scale *de novo* SNP discovery and genotyping using high-throughput sequencing. *PLoS One*, **8**(3): e58700.
- Tapley B, Chen S, Turvey ST, Redbond J, Okada S, Cunningham AA. 2017. A sustainable future for Chinese giant salamanders: Chinese giant salamander field survey manual. Technical Report, Zoological Society of London. <https://www.amphibians.org/wp-content/uploads/2018/12/CGS-field-manual-final.pdf>.
- Turvey ST, Chen S, Tapley B, Wei G, Xie F, Yan F, et al. 2018. Imminent extinction in the wild of the world's largest amphibian. *Current Biology*, **28**(10): R592–R594.
- Turvey ST, Marr MM, Barnes I, Brace S, Tapley B, Murphy RW, et al. 2019. Historical museum collections clarify the evolutionary history of cryptic species radiation in the world's largest amphibians. *Ecology and Evolution*, **9**(18): 10070–10084.
- Wang J, Parham JF, Shi HT. 2021. China's turtles need protection in the wild. *Science*, **371**(6528): 473.
- Wang J, Zhang HX, Xie F, Wei G, Jiang JP. 2017. Genetic bottlenecks of the wild Chinese giant salamander in karst caves. *Asian Herpetological Research*, **8**(3): 174–183.
- Wang XM, Zhang KJ, Wang ZH, Ding YZ, Wu W, Huang S. 2004. The decline of the Chinese giant salamander *Andrias davidianus* and implications for its conservation. *Oryx*, **38**(2): 197–202.
- Yan F, Lü JC, Zhang BL, Yuan ZY, Zhao HP, Huang S, et al. 2018. The Chinese giant salamander exemplifies the hidden extinction of cryptic species. *Current Biology*, **28**(10): R590–R592.
- Yang AS, Liu GJ. 1978. Bulletin on artificial propagation of giant salamanders. *Hunan Fishery Science and Technology*, (4): 29. (in Chinese)
- Yang JA, Lee SH, Goddard ME, Visscher PM. 2011. GCTA: a tool for genome-wide complex trait analysis. *The American Journal of Human Genetics*, **88**(1): 76–82.
- Zhang KJ, Wang XM, Wu W, Wang ZH, Huang S. 2002. Advances in conservation biology of Chinese giant salamander. *Biodiversity Science*, **10**(3): 291–297. (in Chinese)