

# Inhibiting USP16 rescues stem cell aging and memory in an Alzheimer's model

Felicia Reinitz<sup>1†</sup>, Elizabeth Y Chen<sup>1†</sup>, Benedetta Nicolis di Robilant<sup>1†</sup>, Bayarsaikhan Chuluun<sup>2</sup>, Jane Antony<sup>1</sup>, Robert C Jones<sup>3</sup>, Neha Gubbi<sup>1</sup>, Karen Lee<sup>1</sup>, William Hai Dang Ho<sup>1</sup>, Sai Saroja Kolluru<sup>3</sup>, Dalong Qian<sup>1</sup>, Maddalena Adorno<sup>1</sup>, Katja Piltti<sup>4</sup>, Aileen Anderson<sup>4</sup>, Michelle Monje<sup>1</sup>, H Craig Heller<sup>2</sup>, Stephen R Quake<sup>3</sup>, Michael F Clarke<sup>1\*</sup>

<sup>1</sup>Institute of Stem Cell Biology and Regenerative Medicine, Stanford University School of Medicine, Stanford, United States; <sup>2</sup>Department of Biology, Stanford University, Stanford, United States; <sup>3</sup>Department of Bioengineering, Stanford University, Stanford, United States; <sup>4</sup>Sue and Bill Gross Stem Cell Research Center, University of California, Irvine, Irvine, United States

**Abstracts** Alzheimer's disease (AD) is a progressive neurodegenerative disease observed with aging that represents the most common form of dementia. To date, therapies targeting end-stage disease plaques, tangles, or inflammation have limited efficacy. Therefore, we set out to identify a potential earlier targetable phenotype. Utilizing a mouse model of AD and human fetal cells harboring mutant amyloid precursor protein, we show cell intrinsic neural precursor cell (NPC) dysfunction precedes widespread inflammation and amyloid plaque pathology, making it the earliest defect in the evolution of the disease. We demonstrate that reversing impaired NPC self-renewal via genetic reduction of USP16, a histone modifier and critical physiological antagonist of the Polycomb Repressor Complex 1, can prevent downstream cognitive defects and decrease astrogliosis in vivo. Reduction of USP16 led to decreased expression of senescence gene *Cdkn2a* and mitigated aberrant regulation of the Bone Morphogenetic Signaling (BMP) pathway, a previously unknown function of USP16. Thus, we reveal USP16 as a novel target in an AD model that can both ameliorate the NPC defect and rescue memory and learning through its regulation of both *Cdkn2a* and BMP signaling.

\*For correspondence: mfclarke@stanford.edu

†These authors contributed equally to this work

Competing interest: See page 22

Funding: See page 22

Preprinted: 22 December 2020

Received: 22 December 2020

Accepted: 17 March 2022

Published: 21 March 2022

Reviewing Editor: Jessica Young, Institute for Stem Cell and Regenerative Medicine (ISCRM), United States

© Copyright Reinitz, Chen, Nicolis di Robilant et al. This article is distributed under the terms of the [Creative Commons Attribution License](https://creativecommons.org/licenses/by/4.0/), which permits unrestricted use and redistribution provided that the original author and source are credited.

## Editor's evaluation

This work by Reinitz et al. provides nice evidence of a neural stem cell (NSC) defect that precedes and appears to be independent of amyloid pathology and neuroinflammation in an AD model. The authors show that targeting USP16, a BMI antagonist, can rescue some of these NSC deficits. Furthermore, scRNA-seq and GSEA points to the BMP pathway as a major player in regulating these phenotypes; in support of their hypothesis, the authors show that inhibition of BMP signaling using small molecules also rescues NSC defects. These are interesting and novel findings that will be of interest to the field.

## Introduction

Alzheimer's disease (AD) is the most common form of dementia, occurring in 10% of individuals over the age of 65 and affecting an estimated 5.5 million people in the United States (Hebert et al., 2013). Currently, there is no treatment to stop, prevent, or reverse AD, and recent advances with monoclonal antibody therapy targeting plaques, although controversial, might at best only slow progression

(Huang and Mucke, 2012; Selkoe, 2019; Sevigny et al., 2016). Historically, AD has been understood by its end-stage disease phenotype, characterized clinically by dementia and pathologically by amyloid senile plaques and neurofibrillary tangles (Castellani et al., 2010). These traditional AD pathologies are thought to begin with amyloid plaque deposition that is associated with inflammation, increased reactive oxygen species (ROS), and neurodegeneration during aging (Akiyama et al., 2000; Glass et al., 2010); however, thus far, treatments to decrease formation of plaques have shown only minimal or no improvement in disease progression or outcomes (Knopman et al., 2021; Selkoe, 2019).

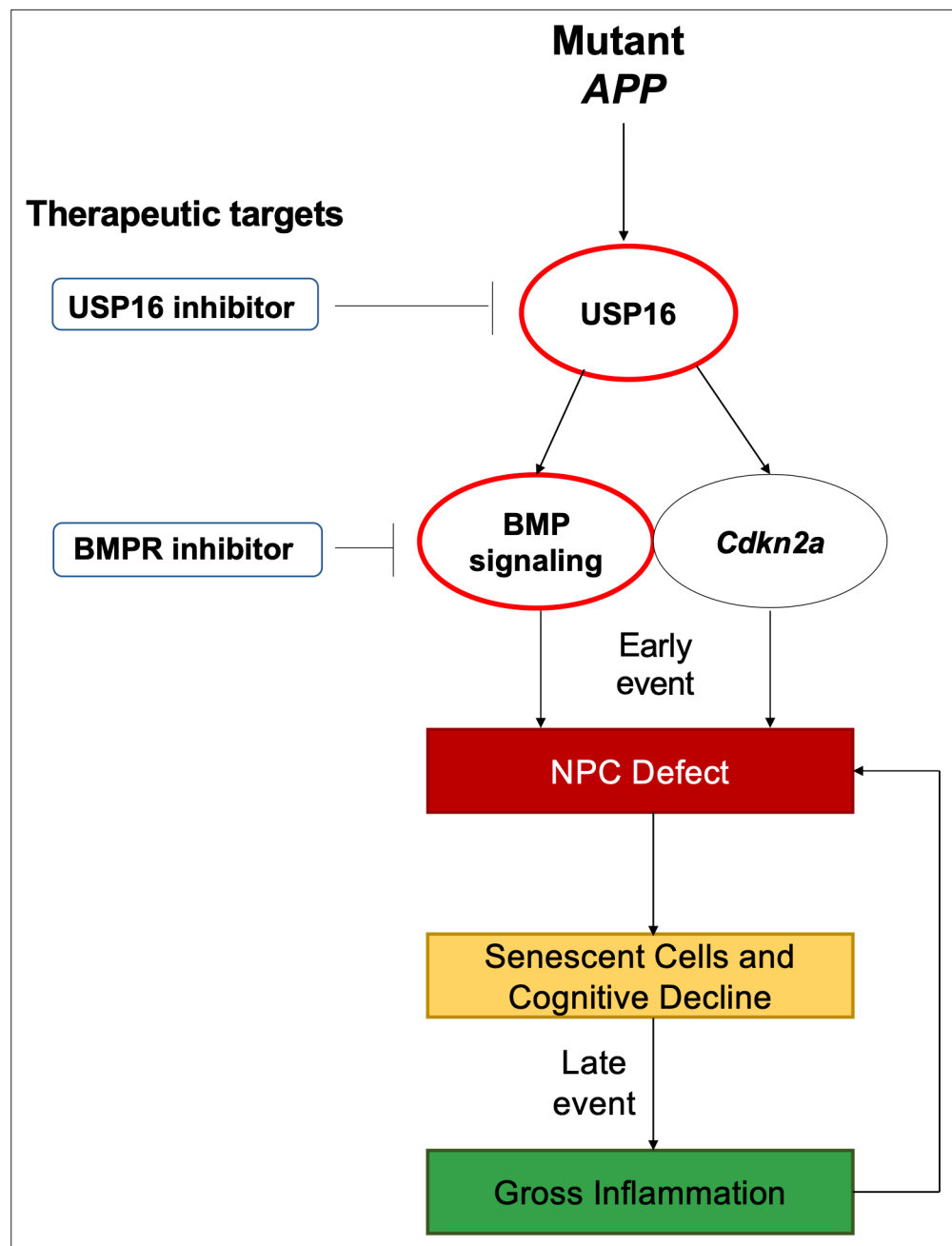
Adult neurogenesis is thought to be compromised in AD, contributing to early dementia (Alipour et al., 2019). The decline of neural stem/precursor cell (NPC) function in the subventricular zone (SVZ) and the hippocampus has been established in both aging (Leeman et al., 2018) and various AD mouse models (Haughey et al., 2002; López-Toledano and Shelanski, 2004; Mu and Gage, 2011; Rodríguez et al., 2009; Rodríguez and Verkhatsky, 2011; Sakamoto et al., 2014; Winner et al., 2011). However, it is still unknown whether these defects are cell-intrinsic resulting from changes inside the cells or extrinsic, resulting from factors present in the niche, such as inflammation. Here, we report that the NPC defects seen in an AD mouse model harboring Swedish, Dutch, and Iowa mutations in the amyloid precursor protein (Tg-SwDI) is initially cell-intrinsic and predates inflammation and widespread plaque deposition, which play a role later in the disease. We chose the Tg-SwDI model with mutations confined to APP because mice develop early plaque deposition and cognitive deficits, and express physiologic levels of transgenic human A $\beta$ PP at approximately 50% the level of endogenous mouse APP (Davis et al., 2004). In this model, mice begin to develop amyloid deposition in brain parenchyma as early as 3 months of age and throughout the forebrain by 12 months (Davis et al., 2004; Miao et al., 2005), as well as significant cerebral amyloid angiopathy, which is thought to be a more sensitive predictor of dementia than parenchymal and amyloid plaques (Neuropathology Group. Medical Research Council Cognitive Function and Aging Study, 2001; Thal et al., 2003).

In this study, we targeted USP16, an upstream regulator of *Cdkn2a*, to reverse the NPC defect seen in the Tg-SwDI model. USP16 counteracts self-renewal regulator BMI1 by deubiquitinating histone H2A on Lysine 119 at the *Cdkn2a* locus, resulting in increased expression of protein products P16 (*Ink4a*) and P14 (*Arf*) (Adorno et al., 2013). This results in increased senescence with a concomitant decrease in self-renewal. Here, we demonstrate that inhibiting USP16 is a potential novel strategy to rescue *Cdkn2a*-mediated pathologies in AD induced by both p16<sup>Ink4a</sup> and p19<sup>Arf</sup>. As *Cdkn2a* might not be the only player in AD pathophysiology, we probed for additional pathways regulated by USP16 and identified enrichment of the BMP pathway early on in the Tg-SwDI mice. The BMP pathway has been known to play a role in NPC function. Specifically, BMPR2 is a type II receptor that heterodimerizes with BMPR1a or BMPR1b, and is responsible for transducing BMP signaling downstream to the SMAD proteins, which translocate to the nucleus and can turn on genes related to cell fate and differentiation (Chang et al., 2018). Levels of BMP2, 4, 6, and 7 expression have been found to increase in the hippocampus and SVZ with age (Yousef et al., 2015; Apostolopoulou et al., 2017). Furthermore, *Bmpr2* conditional ablation in *Ascl1* expressing neural stem cells (NSCs)/NPCs or treatment with BMP inhibitor Noggin results in activation of NSCs, increased cell proliferation, and a rescue of cognitive deficits to levels comparable to young mice (Meyers et al., 2016). For the first time, we show that targeting USP16 in a mouse model of AD rescues two aberrant aging pathways, *Cdkn2a* and BMP, which can restore self-renewal of NPCs, decrease astrogliosis, and retard cognitive decline (Figure 1).

## Results

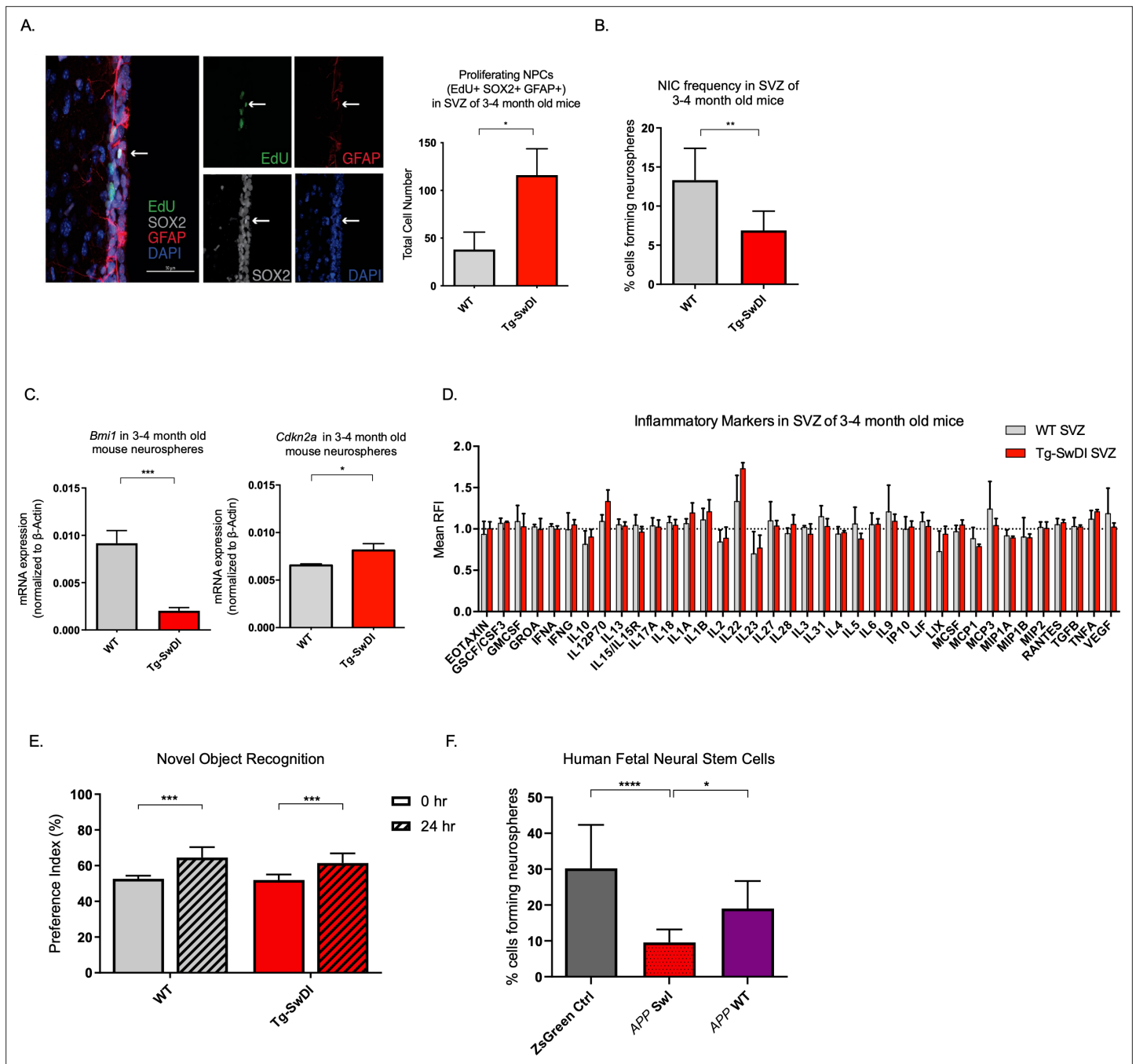
### Neural precursor cell exhaustion is the earliest sign of disease in Tg-SwDI mice

Detecting disease early before fulminant pathogenesis may be crucial to develop effective diagnosis and treatment, particularly when it comes to irreversible degeneration. Therefore, we used a multimodal temporal approach, including immunofluorescence staining, in vitro neurosphere assays, Luminex assays, and behavioral studies to dissect changes at the molecular, cellular, and organismal levels in mice at varying ages. At 3 months of age, we found that proliferation of NPCs, marked by 5-ethynyl-2'-deoxyuridine (EdU) (Chehrehasa et al., 2009), SOX2, and GFAP, was increased threefold in the SVZ of Tg-SwDI mice ( $p=0.0153$ ; Figure 2A). In many tissues including the blood, pancreas,



**Figure 1.** Schematic summarizing therapeutic approaches to mitigate the effects of mutant APP through targeting of *Cdkn2a*, BMI1, USP16 and BMP. Aberrant USP16/*Cdkn2a*/BMP signaling results in an early neural precursor cell (NPC) defect in Alzheimer's Disease. USP16 inhibitors and/or BMPR inhibitors can be combined with current therapeutics targeting beta amyloid plaques to rescue this earlier defect that predates senescence, cognitive decline, and resulting gross inflammation.

intestine, and mammary gland, hyperproliferation has been linked to a premature decline in stem cell function associated with aging (Essers *et al.*, 2009; Krishnamurthy *et al.*, 2006; Scheeren *et al.*, 2014). Thus, we looked at stem cell function using extreme limiting dilution analysis (ELDA) of neurosphere-formation from single cells (Hu and Smyth, 2009; Pastrana *et al.*, 2011). We discovered that 3 and 4-month-old Tg-SwDI mice had significantly less regenerative potential of the SVZ cells than that of healthy age-matched control mice (neurosphere-initiating cell (NIC) frequencies: 1 in 14.5 versus 1 in 7.5, respectively,  $p=0.00166$ , **Figure 2B** and **Figure 2—source data 1**). As *Bmi1* is required for self-renewal of stem cells in the peripheral and central nervous systems and is responsible



**Figure 2.** Defects in neurosphere initiating capacity (NIC) and hyperproliferation in Tg-SwDI mice predate cognitive deficits and widespread inflammation. **(A)** Representative 40× confocal images of the subventricular zone (SVZ) stains for EdU, GFAP, and SOX2 (left). Three to four-month-old mice underwent intraperitoneal injections every day for 6 days with EdU and the analysis was performed four weeks after. Count of proliferating neural precursor cells, as cells positive for EdU, GFAP, SOX2, and DAPI, is shown in the panel on the right (n = 3 mice). Data are presented as mean ± SEM. \*p=0.0153 **(B)** Limiting dilution assays were performed using single cells derived from neurospheres from 3 to 4-month-old mice. The graph shows the percentage of neurosphere-initiating cells (NIC) ± upper and lower estimates converted to percentages from values calculated by extreme limiting dilution analysis (ELDA). \*\*p=0.00166 **Figure 2—source data 2** summarizes the lower, upper, and estimates of 1/NIC for the different genotypes calculated by ELDA. **(C)** *Bmi1* and *Cdkn2a* expression levels measured by RT-qPCR in neurospheres derived from the SVZ of wild type (WT) or Tg-SwDI mice at third passage (mice aged 3 and 4 months). Data are presented as mean ± SD. \*\*\*p=0.0009 \*p=0.0197 **(D)** Cytokine levels measured by Luminex array from the SVZ of young 3 and 4-month-old mice. No differences were observed at this age (n = 3 mice for each genotype). See also **Figure 2—figure supplement 1A**. Data are presented as mean ± standard deviation (SD). **(E)** Novel object recognition 24 hr testing in mice at 3 months of age showed no signs of cognitive impairment in the Tg-SwDI mice with a preference index comparable to that of WT indicating both genotypes had intact object discrimination (p=0.001 for WT and p=0.0099 for Tg-SwDI, n = 7–10 mice in each group). Data are presented as mean ± standard error of the

Figure 2 continued on next page

Figure 2 continued

mean (SEM). (F) ELDA graph of limiting dilution assay comparing human fetal neurospheres infected with pHIV-Zsgreen, APP SwI, or APP WT. **Figure 2—source data 2** lists the estimated stem cell frequencies and ranges for each group, calculated using the ELDA software (n = 3 separate transductions and limiting dilution experiments) \*\*\*\*p=3.7e<sup>-6</sup>, \*p=0.00507.

The online version of this article includes the following source data and figure supplement(s) for figure 2:

**Source data 1.** NIC frequencies in 3-4 month old mice.

**Source data 2.** NIC frequencies in fetal cells.

**Figure supplement 1.** No significantly upregulated inflammatory markers in young Tg-SwDI mice with at least a 2-fold increase in transgenic mutant APP Swedish Dutch Iowa (SDI) expression.

for repressing p16<sup>Ink4a</sup> expression, we queried if decreased *Bmi1* and/or increased *Cdkn2a* expression was concurrent with the observed decrease in regenerative potential of NPCs from Tg-SwDI mice (Molofsky et al., 2005). Indeed, we measured a significant decrease in *Bmi1* expression and a significant increase in its downstream target *Cdkn2a* expression in neurospheres from Tg-SwDI mice compared to wild type (WT) (Figure 2C). To study whether these changes in proliferation and self-renewal capacity of NPCs occur before the well-established prominent AD phenotype of inflammation, we employed a Luminex screen to assess the presence of an array of cytokines and other inflammatory markers. We looked at the SVZ, hippocampal dentate gyrus (DG), and cortex in 3 and 4-month-old mice, but found no significant differences in inflammatory markers between Tg-SwDI and WT mice in any of these regions (Figure 2D and Figure 2—figure supplement 1A). To explore further, we measured mRNA levels of *Ptgs2* (COX2), *Tnf*, *Il6*, and *Il1b* utilizing quantitative polymerase chain reaction (qPCR), but found no significant differences between WT and Tg-SwDI in either the SVZ, DG, or cortex for *Ptgs2*, whereas the remaining markers were undetectable using quantitative RT-PCR (Figure 2—figure supplement 1B).

One of the hypothesized reasons for lack of efficacy observed in AD clinical trials is the late initiation of treatment. In humans, abnormal deposits of amyloid  $\beta$  and tau tangles as well as damage of the brain is believed to start a decade or more before cognitive decline (Ower et al., 2018). We, therefore, wanted to see if the decrease in neurosphere-initiating capacity of Tg-SwDI mice also precedes their memory impairment and progressively diminished cognitive function. Although Tg-SwDI mice are known to exhibit these features, there was no evidence of cognitive impairment in 3 and 4-month-old mice when subjected to novel object recognition (NOR) training and subsequent testing after 24 hr (Ennaceur and Delacour, 1988; Figure 2E).

Finally, given the prominent early aberrant self-renewal phenotype in the 3 and 4-month-old Tg-SwDI mice, we investigated whether or not expression of mutant APP in human NPCs might also cause a self-renewal defect. To this end, we infected human fetal neurospheres with a lentiviral construct for either pHIV-Zsgreen alone, pHIV-Zsgreen with wild type APP (APP WT), or pHIV-Zsgreen with Swedish and Indiana APP mutations (APP SwI). This model allowed us to study the potentially cell intrinsic effect of APP mutations on NPC regenerative potential in primary human cells. Although our Tg-SwDI mice employ Swedish, Dutch, and Iowa mutations, we chose a human in vitro model with Swedish and Indiana mutations as the Indiana mutation allows for an increase in the  $A\beta_{42}/A\beta_{40}$  ratio rather than the increased amyloidosis of the vasculature incurred by Dutch and Iowa mutations which would have been difficult to observe in vitro. Our human NPCs expressed at least a 2-fold change increase in mutant APP compared to the baseline endogenous APP levels in the Zsgreen control (Figure 2—figure supplement 1C). Employing the same limiting dilution assay as before, we found diminished NIC frequency of mutant APP-infected human neurospheres compared to cells infected with the empty vector or with WT APP (1 in 10.44 versus 1 in 3.31 and 1 in 10.44 versus 1 in 5.26, respectively, p=3.7e<sup>-6</sup> and p=0.00507; Figure 2F and Figure 2—source data 1). This result suggests that the self-renewal defect is cell-intrinsic and can be observed in two different AD models with different mutations.

## Modest aging in Tg-SwDI accelerates NPC exhaustion prior to detectable inflammation

To explore progression of the disease with aging, we next looked at what phenotypic changes occurred in older Tg-SwDI mice, including proliferation, self-renewal, inflammation, and astrogliosis.

The NPC hyperproliferation in SVZ observed in 3 and 4-month-old Tg-SwDI mice was not observed in 1-year-old mice, demonstrated by the number of EdU+SOX2+GFAP+ cells (**Figure 3A**). Still, the defect in self-renewal that was observed in the 3 and 4-month-old Tg-SwDI mice was exacerbated in the 1-year-old Tg-SwDI mice ( $p=0.00625$ ; **Figure 3B** and **Figure 3—source data 1**).

We hypothesized that inflammation might explain the NPC defect but may not have been easily detected at 3 months of age. However, even at 1 year old, we did not detect any overall significant differences in inflammatory cytokines in the SVZ, DG, or cortex between the WT and Tg-SwDI mice (**Figure 3C**, **Figure 3—figure supplement 1A, B**). Reactive astrogliosis, the abnormal increase and activation of astrocytes seen in AD patients and mouse models, is also a sign of inflammation that can drive degeneration of neurons and has been linked to both AD disease pathogenesis (**Osborn et al., 2016**) and to the BMI1/*Cdkn2a* pathway. Specifically, Zencak and colleagues showed increased astrogliosis in *Bmi1*<sup>-/-</sup> mice (**Zencak et al., 2005**). With the aim of evaluating astrogliosis, we performed a qPCR for A1 astrocytic markers in the cortex of 1-year-old mice, but did not observe any significant increases in mRNA expression compared to WT (**Figure 3—figure supplement 2**).

However, when we looked at differentiation of neurosphere cultures from the SVZ of Tg-SwDI mice and WT controls and analyzed the number of GFAP-expressing cells following differentiation, we found that cells originating from Tg-SwDI mice formed more GFAP+ cells than those from WT controls. This suggested that there was a general lineage increase in astrocytes derived from Tg-SwDI NPCs compared to WT NPCs (**Figure 3—figure supplement 3**).

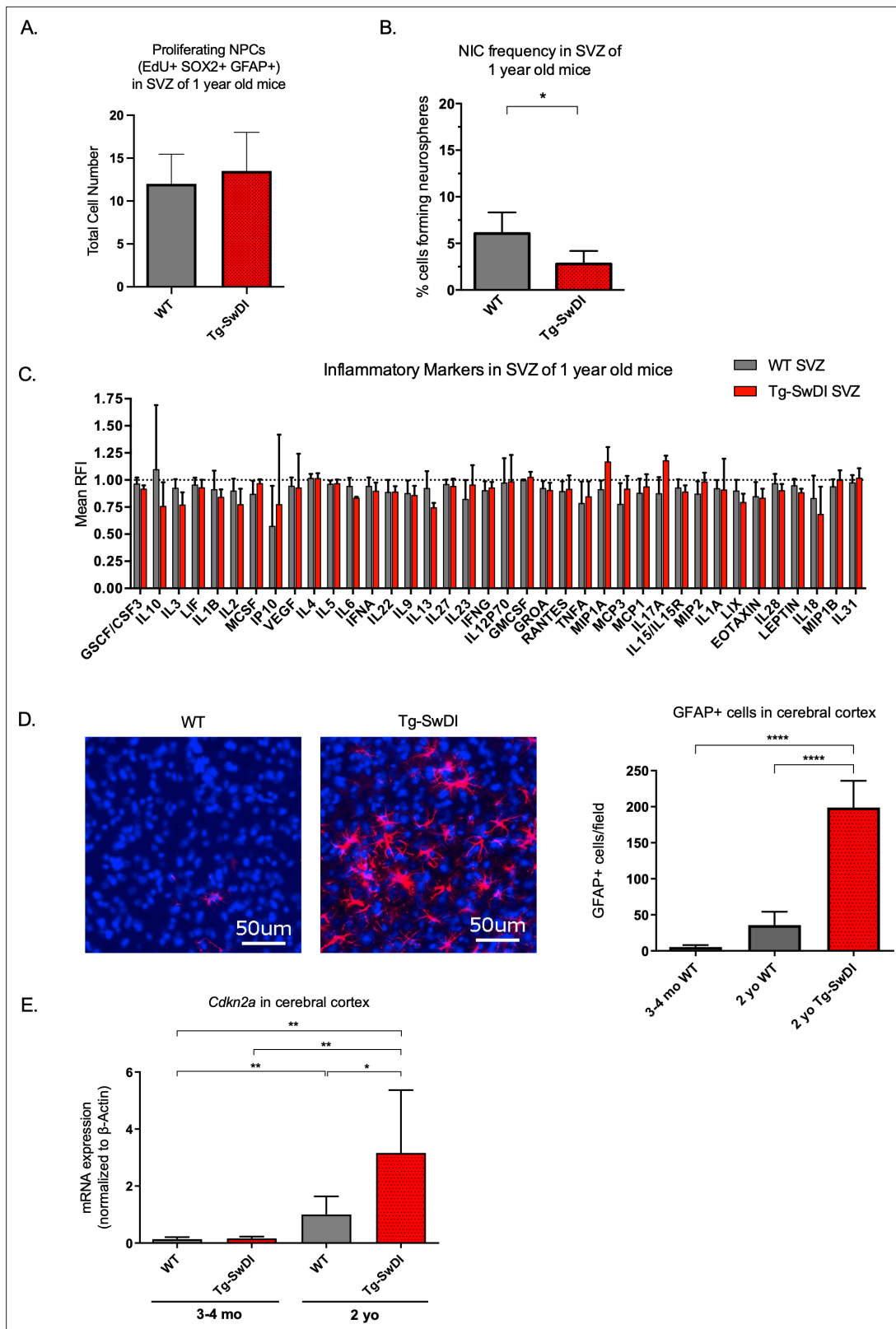
Because inflammation and reactive astrogliosis are linked to AD, we wished to see when these events occur in our models. When we looked at 2-year-old mice by microarray analyses of SVZ, DG, and cortex, we saw an increase in *Cd44*, *Vim*, *Serp1*, and other markers related to pan- and A1-specific astrogliosis and a concomitant inflammatory signature of Tg-SwDI mice compared to WT mice (**Figure 3—figure supplement 4A, B**, respectively, **Reinitz et al., 2022**). We next looked for additional evidence of astrogliosis and observed a significant increase in GFAP-expressing cells in the cerebral cortex of 2-year-old Tg-SwDI mice compared to WT that was not seen in younger Tg-SwDI mice ( $p<0.0001$ ; **Figure 3D** and **Figure 3—figure supplement 5**). This suggests that reactive astrogliosis is exacerbated by and strongly correlated with aging and later disease progression.

In line with our findings thus far, expression of the well-studied gene, *Cdkn2a*, known for its increased expression with aging and critical function of inhibiting stem cell self-renewal during development and throughout the lifespan, was increased with aging and even more so in the Tg-SwDI cortex (**Figure 3E**). (**Molofsky et al., 2003**; **Park et al., 2003**; **Sun et al., 2004**). Taken together with our data showing an increase in EdU+SOX2+GFAP+ cells in Tg-SwDI mice SVZ at an early age, our extreme limiting dilution assay in older mice, and expression changes of *Cdkn2a* and *Bmi1*, we infer a premature reduction of self-renewal capacity of NPCs, but not necessarily a decrease in the total number of neural progenitor cells in our Tg-SwDI model. These results suggest that a neural stem cell defect and early cognitive decline predate detectable inflammation and reactive astrogliosis in Tg-SwDI mice.

## Self-renewal defects are rescued by *Usp16* and *Cdkn2a* modulation

Neural precursor cells function through a number of genetic and epigenetic components, and one of the well-described master regulators is *Cdkn2a*, a gene tightly regulated by BMI1 (**Bruggeman et al., 2005**). When we crossed the Tg-SwDI mouse with a *Cdkn2a* knockout mouse (Tg-SwDI/*Cdkn2a*<sup>-/-</sup>) and performed limiting dilution assays in SVZ cells from 3-month-old mice, there was a complete restoration of the NIC frequency in the Tg-SwDI/*Cdkn2a*<sup>-/-</sup> cells compared to age-matched Tg-SwDI cells ( $p=7.7e^{-05}$ ; **Figure 4A**, **Figure 4—source data 1**, and **Figure 4—figure supplement 1A**, **Figure 4—figure supplement 1—source data 1**). This NIC rescue was also observed in hippocampal cells cultured from microdissection of the DG ( $p=2.09e^{-9}$ , **Figure 4B** and **Figure 4—source data 2**). These results demonstrate that impairment of NPC regeneration, as measured by NIC frequencies, is a function of aging that is accelerated by *APP* mutations and is mitigated through loss of *Cdkn2a*, a known regulator of NPC self-renewal (**Molofsky et al., 2003**).

Unfortunately, mutations or loss of function in the *Cdkn2a* gene eventually leads to tumor formation, making it not feasible to perform limiting dilution experiments in 1-year-old *Cdkn2a* knockout mice and also making it less than ideal to target therapeutically (**Hussussian et al., 1994**). Upstream of *Cdkn2a* is USP16, an antagonist of BMI1 and a de-repressor of *Cdkn2a* that acts through the



**Figure 3.** Accelerated aging phenotype seen in Tg-SwDI mice with exacerbated self-renewal and astrogliosis. (A) One-year-old mice underwent intraperitoneal injections every day for 6 days with EdU and the analysis was performed four weeks afterward to capture all true activated daughter stem cells that would maintain the niche without further differentiation or migration. Data are presented as counts of proliferating neural precursor cell cells positive for EdU, GFAP, SOX2, and DAPI mean  $\pm$  SEM (n = 3 mice). (B) Limiting dilution assays were performed using single cells derived from *Figure 3 continued on next page*

Figure 3 continued

neurospheres from 1-year-old mice. The bar graph shows the percentage of neurosphere-initiating cells calculated by extreme limiting dilution analysis (ELDA). \* $p=0.00625$ . **Figure 3—source data 1** summarizes the lower, upper, and estimates of 1/NIC for the different genotypes calculated by ELDA. (C) Cytokine levels measured by Luminex array from the subventricular zone of 1-year-old mice. No differences were observed at this age. ( $n = 3$  mice each genotype). See also **Figure 3—figure supplement 1**. Data are presented as mean  $\pm$  SD. (D) Anterior sections were obtained from 2-year-old mice, stained and counted for GFAP+ cells in the cortex. Four different images per section and three sections per mouse were counted ( $n = 4$  mice each group). A one-way ANOVA showed significant differences between the groups (\*\*\*\* $p<0.0001$ ). Data are presented as mean  $\pm$  SEM. (E) mRNA levels of *Cdkn2a* in the cerebral cortex of 3 and 4-month-old and 2-year-old mice were measured by RT-qPCR. Ct values were normalized to *Actb*. (WT = wild type littermate; 3 and 4-month-old: WT = 7, Tg-SwD  $n = 7$ , 2-year-old: WT  $n = 6$ , Tg-SwDI  $n = 6$ ). A one-way ANOVA showed significant differences between the groups ( $p=0.0044$  between 3 and 4-month-old and 2-year-old WT,  $p=0.0040$  between 3 and 4-month-old and 2-year-old Tg-SwDI,  $p = 0.0438$  between 2-year-old WT and Tg-SwDI,  $p=0.00553$  between 3 and 4-month-old WT and 2-year-old Tg-SwDI). Data are presented as mean  $\pm$  SD.

The online version of this article includes the following source data and figure supplement(s) for figure 3:

**Source data 1.** NIC Frequencies in 1 yo mice.

**Figure supplement 1.** No significantly upregulated inflammatory markers in 1-year-old Tg-SwDI mice.

**Figure supplement 2.** No significant increase in levels of A1 astrocyte markers at 1 year of age in Tg-SwDI mice.

**Figure supplement 3.** There is a general lineage increase in astrocytes derived from Tg-SwDI neural precursor cells.

**Figure supplement 4.** Upregulation of astrogliosis and a concomitant inflammatory signature is present in Tg-SwDI mice compared to wild type (WT) mice.

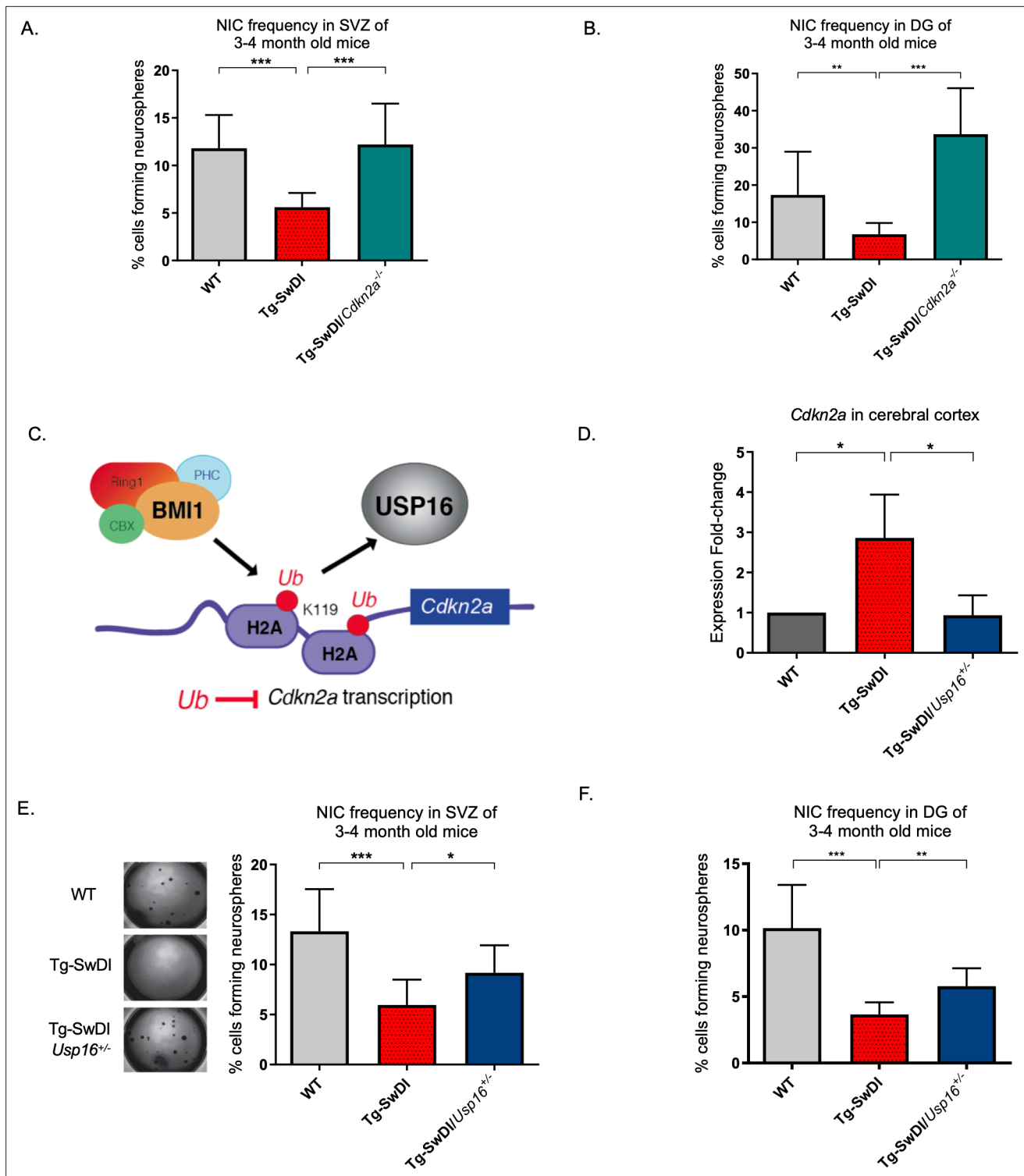
**Figure supplement 5.** There is no upregulation of astrogliosis in 3 and 4-month-old Tg-SwDI mice over wild type (WT) mice.

enzymatic removal of ubiquitin from histone H2A (**Figure 4C; Adorno et al., 2013; Joo et al., 2007**). We predicted that downregulation of *Usp16* would increase BMI1 function to counteract the effects of mutant APP similar to what we observed with knockout of *Cdkn2a*. This is supported by previous data that showed overexpression of *USP16* in human-derived neurospheres led to a marked decrease in the formation of secondary neurospheres (**Adorno et al., 2013**), and overexpression of *Bmi1* led to increased self-renewal and maintenance of multipotency (**Fasano et al., 2009**). To test this, we crossed Tg-SwDI mice with *Usp16*<sup>+/-</sup> mice to generate Tg-SwDI/*Usp16*<sup>+/-</sup> mice, which do not show tumor formation. We found that Tg-SwDI mice express greater than twofold more cortical *Cdkn2a* than both WT and Tg-SwDI/*Usp16*<sup>+/-</sup> mice, for which expression levels were very similar ( $p=0.0365$  and  $p=0.0318$ , respectively, **Figure 4D**). Limiting dilution experiments of cells isolated from the SVZ and DG of the hippocampus showed that Tg-SwDI/*Usp16*<sup>+/-</sup> mice had significantly greater NIC frequencies, partially rescuing the self-renewal defect seen with mutant APP ( $p=0.0492$  and  $p=0.00233$ , respectively; **Figure 4E, Figure 4—source data 3** and **Figure 4F, Figure 4—source data 4**). Furthermore, two-year-old Tg-SwDI mice show reduced *Bmi1* expression, which was rescued by *Usp16* haploinsufficiency, in both the SVZ and cortex (**Figure 4—figure supplement 1B, Reinitz et al., 2022**). Similar to the NIC rescue in the Tg-SwDI/*Cdkn2a*<sup>-/-</sup> mice, these data provide further evidence of cell-intrinsic impaired self-renewal in the Tg-SwDI model of familial AD, and that reversal of this impairment is possible through targeting *Cdkn2a* upstream regulator, USP16.

## RNA-seq reveals enriched BMP signaling in Tg-SwDI mice that is rescued by *Usp16* haploinsufficiency

Previous studies using RNA-sequencing techniques have demonstrated significant genomic age-related cell intrinsic changes in self-renewing cells originating from the SVZ (**Apostolopoulou et al., 2017**). To delineate potential self-renewal pathways that might contribute to the defect and rescue of Tg-SwDI NPCs and Tg-SwDI/*Usp16*<sup>+/-</sup> NPCs, respectively, we performed single-cell RNA-seq on lineage depleted primary FACS-sorted CD31<sup>+</sup>CD45<sup>+</sup>TER119<sup>+</sup>CD24<sup>-</sup> SVZ cells from Tg-SwDI, WT, and Tg-SwDI/*Usp16*<sup>+/-</sup> mice at 3 and 4 months and 1 year of age (**Figure 5A; Mootha et al., 2003; Subramanian et al., 2005**). As CD31/CD45/TER119 denote the hematopoietic cell fraction and CD24 marks differentiated cells, we used these markers to enrich for NPCs obtained from the SVZ. A cell-type analysis using a TSNE plot surveying the top differentially expressed genes of each cluster (**Tabula Muris Consortium et al., 2018; Zhang et al., 2014**) did not find any new cell populations specific to the Tg-SwDI genotype (**Figure 5—figure supplement 1A, B, Chen et al., 2022**). This suggested to us that changes in phenotype were the result of transcriptional differences in cells rather than the addition or subtraction of an existing cell type. Like our human model, cells from the Tg-SwDI mouse





**Figure 4.** *Usp16* haploinsufficiency normalizes *Cdkn2a* expression and restores self-renewal in Tg-SwDI NPCs. (A) The bar graph shows the NIC frequencies in subventricular zone ( $p=5.5e^{-5}$  between wild type (WT) and Tg-SwDI and  $p=7.7e^{-5}$  between Tg-SwDI/*Cdkn2a*<sup>-/-</sup> and Tg-SwDI) and in the dentate gyrus (B) ( $p=0.00476$  between wild type (WT) and Tg-SwDI and  $p=2.09e^{-9}$  between Tg-SwDI/*Cdkn2a*<sup>-/-</sup> and Tg-SwDI) as percentages of total cells with error bars indicating the upper and lower values. Mice were 3 months old when sacrificed; experiment done after third passage of neurospheres.

, Figure 3—source data 1, Figure 4—source data 1 summarize the lower, upper, and estimates of 1/NIC for the different genotypes calculated by extreme limiting dilution analysis (ELDA). (C) Schematic summarizing the role of BMI1 in ubiquitinating histone H2A at different sites in the genome, including the *Cdkn2a* locus and the role of USP16 as its natural antagonist, suggesting that USP16 inhibition could influence neurosphere initiating

Figure 4 continued on next page

Figure 4 continued

capacity. (D) RT-qPCR of *Cdkn2a* in the cerebral cortex of 2-year-old Tg-SwDI mice shows mRNA levels were rescued by *Usp16* haploinsufficiency ( $n = 3$ ). Ct-values were normalized to *Actb*. A one-way ANOVA showed significant differences between the groups ( $p=0.0365$  between WT and Tg-SwDI and  $p=0.0318$  between Tg-SwDI and Tg-SwDI/*Usp16*<sup>+/-</sup>). Data are presented as mean  $\pm$  SD. (E) Left panel shows 1 $\times$  representative photographs of neurospheres grown in 96-well dish after two weeks of culture. The bar graph shows the NIC frequencies in subventricular zone as percentages of total cells comparing WT, Tg-SwDI, and Tg-SwDI/*Usp16*<sup>+/-</sup> mice. Mice were 3 months old. ( $n = 3$  mice per genotype,  $p=0.000402$  between WT and Tg-SwDI and  $p=0.0492$  between Tg-SwDI/*Usp16*<sup>+/-</sup> and Tg-SwDI) (F) The bar graph shows the NIC frequencies in dentate gyrus as percentages of total cells comparing WT, Tg-SwDI, and Tg-SwDI/*Usp16*<sup>+/-</sup> mice. ( $n = 3$  mice per genotype,  $p=9.9e^{-9}$  between WT and Tg-SwDI and  $p=0.00233$  between Tg-SwDI/*Usp16*<sup>+/-</sup> and Tg-SwDI) **Figure 4—source data 3** and **Figure 4—source data 4** summarize the lower, upper, and estimates of 1/NIC for the different genotypes calculated by ELDA.

The online version of this article includes the following source data and figure supplement(s) for figure 4:

**Source data 1.** NIC Frequencies *Cdkn2a* in SVZ.

**Source data 2.** NIC Frequencies *Cdkn2a* in DG.

**Source data 3.** NIC Frequencies *Usp16* in SVZ.

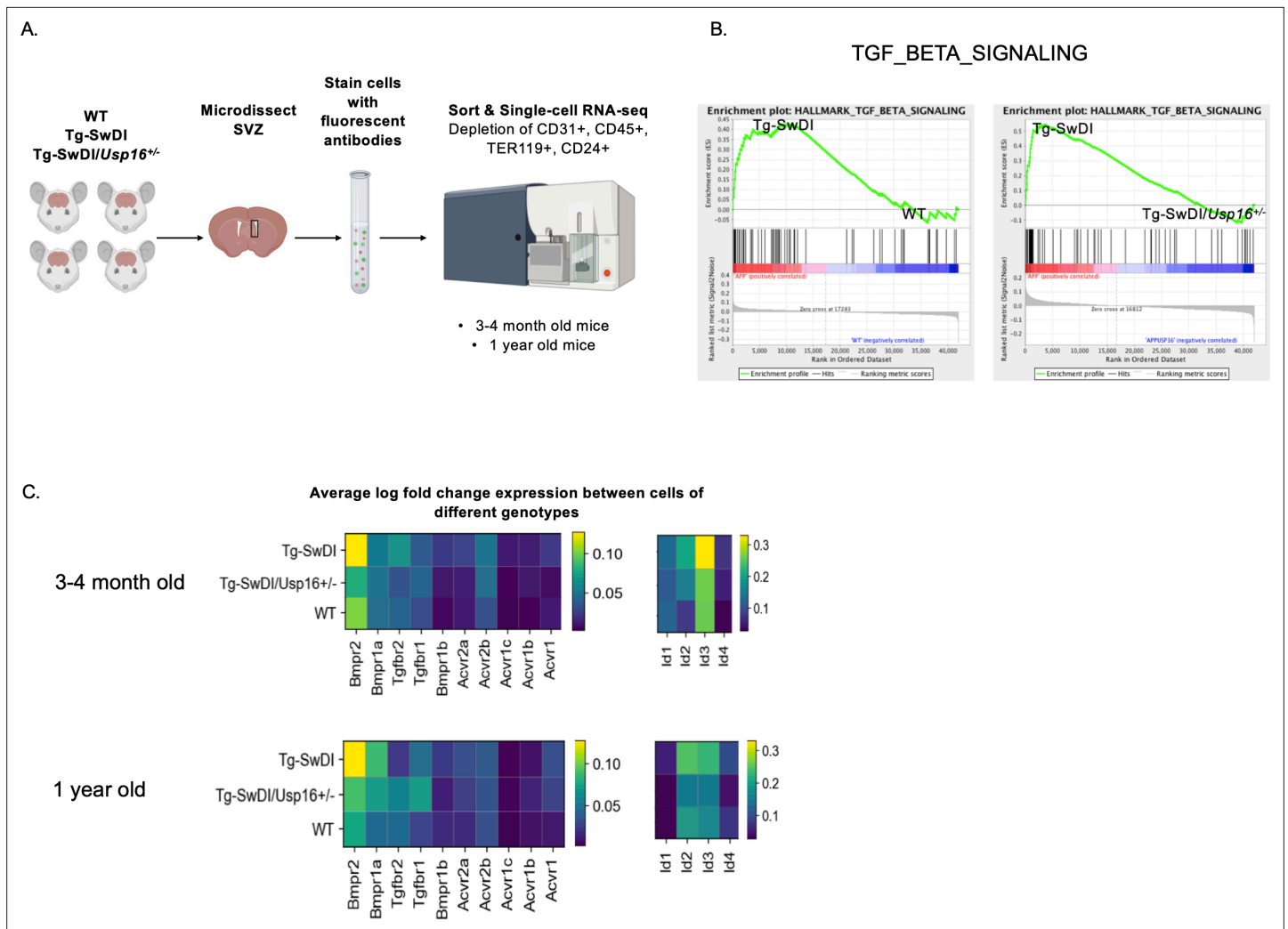
**Source data 4.** NIC Frequencies *Usp16* in DG.

**Figure supplement 1.** *Cdkn2a* loss increases NIC capacity while *Usp16* haploinsufficiency rescues *Bmi1* expression in Tg-SwDI mice.

**Figure supplement 1—source data 1.** NIC Frequencies *Cdkn2a* control.

model expressed approximately a 1.5-fold increase in both normalized mutant *APP* expression and endogenous *App* expression compared to WT cells (**Figure 5—figure supplement 2A**, **Figure 5—figure supplement 2—source data 1**, **Chen et al., 2022**). In addition, similar to the Luminex screen, we did not observe any significant transcriptional upregulation of an inflammatory signature in either 3 and 4-month-old or 1-year-old mice between Tg-SwDI and WT mice (**Figure 5—figure supplement 2B, C**, **Figure 5—figure supplement 2—source data 2** and **Figure 5—figure supplement 2—source data 3**, **Chen et al., 2022**). It is important to note that the RNA-seq data presented here were conducted on cells enriched in the SVZ, which does not exclude the possibility of inflammation in other areas of the brain. Furthermore, when we looked at a panel of proliferation-related genes (**Figure 5—figure supplement 3A, B**, **Figure 5—figure supplement 3—source data 1** and **Figure 5—figure supplement 3—source data 2**, **Chen et al., 2022**), there were only a few genes significantly different between WT and Tg-SwDI cells at 3 and 4 months or 1 year of age, suggesting that the hyperproliferation phenotype we observed in 3 and 4-month-old mice might involve upregulation of only a few genes such as *Anapc2*, *Cdk4*, and *Pcna* and downregulation of cell cycle inhibitors *Cdkn1a* and *Cdkn1b*. This analysis was limited by the fact that the same sorted cells in our scheme may not be equivalent to the cells stained for EdU, SOX2, and GFAP in **Figure 2A**. Other significantly upregulated and downregulated genes are shown labeled on the volcano plots in **Figure 5—figure supplement 4A, B**.

Oftentimes, when we are looking at individual differentially expressed genes, it can be difficult to select which genes to pursue in a therapeutic context. We therefore performed gene set enrichment analysis (GSEA) in order to highlight groups of genes that are significantly enriched and related in the same pathway and can be more easily targeted. Using the GSEA Hallmark gene sets, we found only three gene sets that were enriched in Tg-SwDI mice over WT mice and were also rescued in the Tg-SwDI/*Usp16*<sup>+/-</sup> mice at both ages: TGF- $\beta$  pathway, oxidative phosphorylation, and *Myc* Targets (**Figure 5—source data 1**). The TGF- $\beta$  pathway consistently had the highest normalized enrichment score in pairwise comparisons between Tg-SwDI versus WT and Tg-SwDI versus Tg-SwDI/*Usp16*<sup>+/-</sup> of the three rescued pathways (**Figure 5—source data 2**). In looking specifically at the leading-edge genes contributing to the enrichment plots of the TGF- $\beta$  pathway, we found upregulation of BMP receptors and *Id* genes, which are known to be involved in BMP signaling, a sub-pathway of TGF- $\beta$  (**Figure 5B**). Heatmaps of average normalized single-cell gene expression showed BMP receptors as the most highly expressed TGF- $\beta$  receptors, with genes such as *Bmpr2*, *Bmpr1a*, *Id2*, and *Id3* upregulated in Tg-SwDI mice and rescued in Tg-SwDI/*Usp16*<sup>+/-</sup> mice (**Figure 5C**). Furthermore, the BMP response *Id* genes showed stronger localization to the SLC1A3<sup>+</sup> NPC clusters of both 3 and 4-month-old and 1-year-old mice than genes of the oxidative phosphorylation and *Myc* target pathways (**Figure 5—figure supplements 5 and 6**). These data suggest that USP16 may regulate NPC function in part through the BMP pathway.



**Figure 5.** BMP signaling is enriched in Tg-SwDI mice and decreases with *Usp16* haploinsufficiency. **(A)** Lineage<sup>CD24</sup> NPCs were FACS-sorted from the subventricular zone of 4 mice each of the different genotypes and processed for single-cell RNA-sequencing. **Figure 5—source data 1:** GSEA analysis from single-cell RNA-seq data shows pathways enriched in Tg-SwDI mice compared to wild type (WT) and rescued in Tg-SwDI/*Usp16*<sup>+/-</sup> mice, ordered top to bottom from smallest FDR q-val (most significant) to largest FDR q-val (least significant). (n = 4 for each genotype at each time point; FDR < 25%). Pathways in common to both age groups are bolded. **Figure 5—source data 2:** Normalized enrichment scores of significantly enriched pathways in Tg-SwDI mice compared to WT or Tg-SwDI/*Usp16*<sup>+/-</sup> mice at different time points. TGF $\beta$  pathway, Oxidative phosphorylation, and MYC Targets V2 were selected as they were rescued in both 3 and 4 months and 1-year-old mice by *Usp16* haploinsufficiency. Highest normalized enrichment scores of each comparison are bolded. **(B)** Enrichment plots show TGF- $\beta$  signaling pathway as enriched in Tg-SwDI mice and rescued by *Usp16* haploinsufficiency. Normalized enrichment score (NES) for left panel is 1.77 with FDR-q value = 0.008; NES for right panel is 2.30 with FDR q-value < 0.001. **(C)** Heatmaps showing averaged log-normalized single-cell gene expression of elements of the TGF- $\beta$  pathway; elements of the BMP pathway, a sub-pathway of the TGF- $\beta$  pathway, are specifically enriched in Tg-SwDI mice.

The online version of this article includes the following source data and figure supplement(s) for figure 5:

**Source data 1.** Pathways enriched in Tg-SwDI and rescued in Tg-SwDI/*Usp16*<sup>+/-</sup> mice.

**Source data 2.** Normalized Enrichment Scores of Significantly Enriched Pathways.

**Figure supplement 1.** Comprehensive transcriptomic analysis of Lin-CD24<sup>-</sup> NPCs from subventricular zone (SVZ) of 3 and 4-month-old and 1-year-old mice show no new cellular subpopulations in Tg-SwDI or Tg-SwDI/*Usp16*<sup>+/-</sup> mice.

**Figure supplement 2.** Few changes in inflammatory markers in Tg-SwDI or wild type (WT) mice at 1-year of age with an approximately 1.5-fold increase in normalized mutant *APP* expression.

**Figure supplement 2—source data 1.** *App* gene expression in WT and Tg-SwDI mice.

**Figure supplement 2—source data 2.** Inflammatory genes in 3-4 month old mice.

**Figure supplement 2—source data 3.** Inflammatory genes in 1 year old mice.

Figure 5 continued on next page

Figure 5 continued

**Figure supplement 3.** Only a few hyperproliferation genes are significantly different between wild type (WT) and Tg-SwDI cells at 3 and 4 months or 1 year of age.

**Figure supplement 3—source data 1.** Cell cycle related genes in 3-4 months old mice.

**Figure supplement 3—source data 2.** Cell cycle related genes in 1 yo mice.

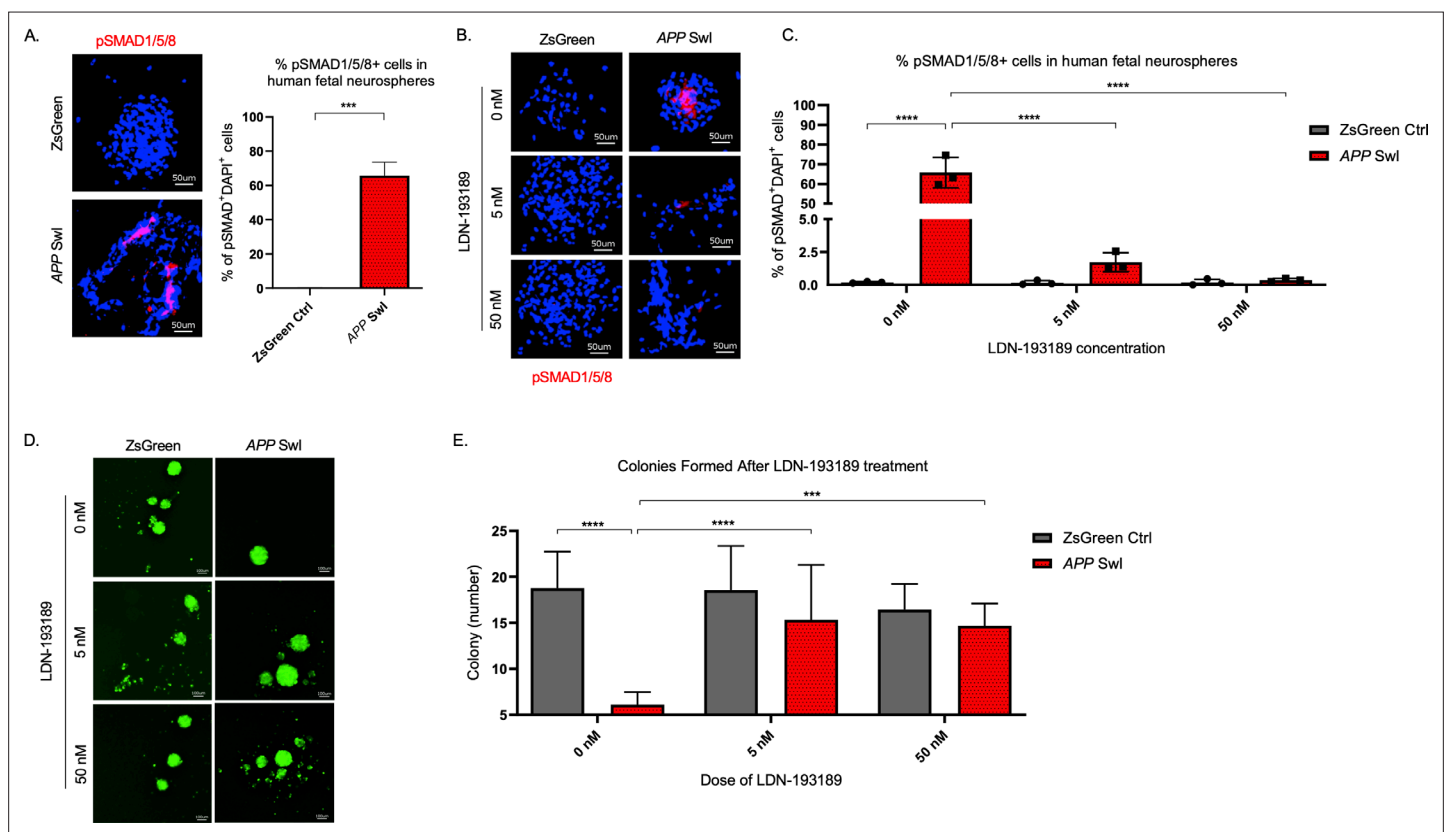
**Figure supplement 4.** Differentially expressed genes in Tg-SwDI cells compared to wild type (WT) cells.

**Figure supplement 5.** TSNE plots of 3 and 4-month-old mice showing localization of various genes in pathways highlighted in **Figure 5—source data 2**.

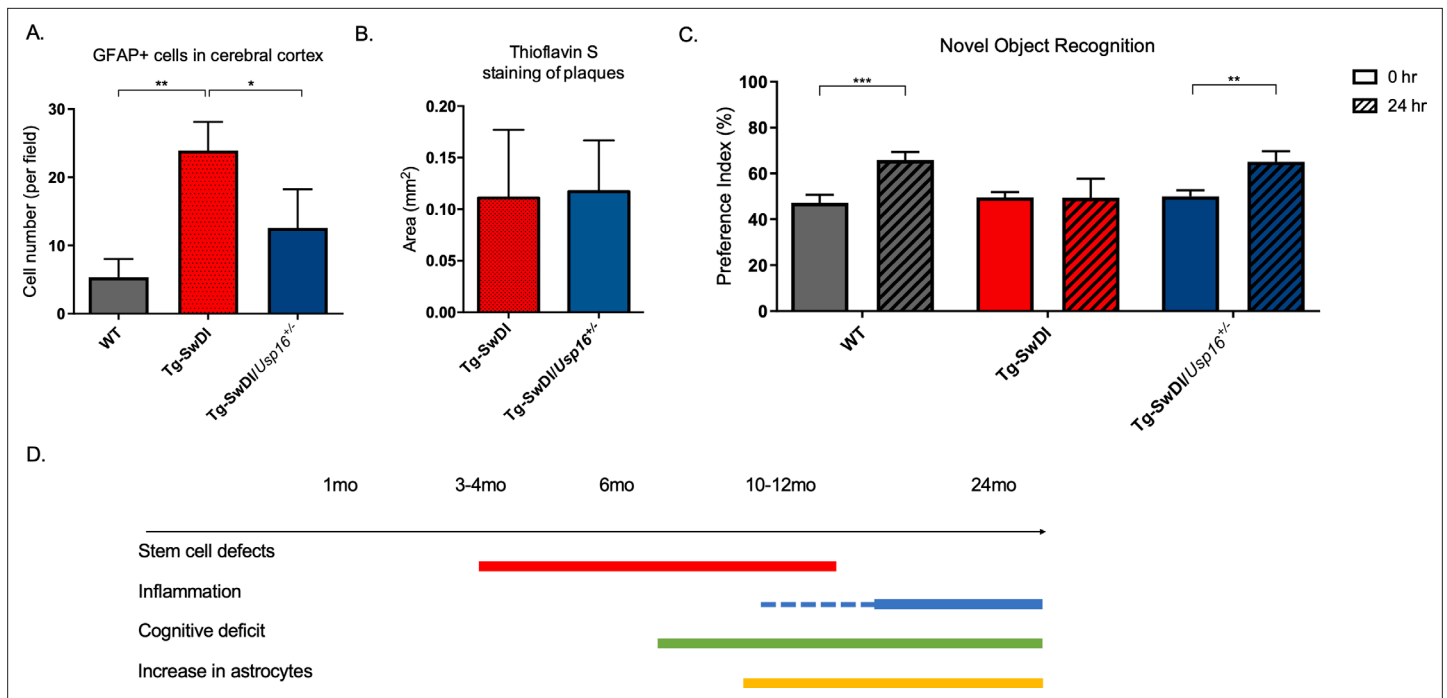
**Figure supplement 6.** TSNE plots of 1-year-old mice showing localization of various genes in pathways highlighted in **Figure 5—source data 2**.

## BMPR inhibition rescues stem cell defects and abolishes increased phospho-SMAD 1/5/8

To confirm the functional significance of the BMP pathway in *APP*-mediated self-renewal defects, we measured the effects of modulating BMP pathway activity in vitro in human fetal NPCs expressing *APP* with Swedish and Indiana mutations (*APP* SwI). First, we measured levels of phosphorylated-SMAD (pSMAD) 1, 5, and 8, known downstream regulators of BMP activity, and found they were significantly increased in the mutant neurospheres compared to control ( $p=0.0001$ , **Figure 6A**). Treatment of the neurospheres with the BMP receptor inhibitor LDN-193189, a specific inhibitor of BMP-mediated SMAD1, SMAD5, and SMAD8 activation, substantially decreased pSMAD 1/5/8 in *APP* SwI NPCs



**Figure 6.** BMPR inhibition rescues mutant *APP* mediated self-renewal defects in human neurospheres. **(A)** Left panel shows representative 100 $\times$  images of phospho-Smad 1/5/8 staining in mutant *APP*-infected human fetal neurospheres compared to ZsGreen controls. Right panel shows quantification of DAPI and phospho-Smad1/5/8 co-stained cells in each group. Data are presented as mean  $\pm$  SD. **(B)** Representative 100 $\times$  images of phospho-Smad1/5/8 staining in neurospheres treated with LDN-193189 for one week. **(C)** Quantification of phospho-SMAD 1/5/8 after treatment with different doses of LDN-193189. A two-way ANOVA revealed significant differences between the groups (\*\*\*\* for  $p<0.0001$ ). Data are presented as mean  $\pm$  SD. **(D)** Representative 6 $\times$  images of in vitro colonies of mutant *APP*- and ZsGreen-infected human fetal neurospheres after one week of LDN-193189 treatment. **(E)** Quantification of the colonies in **(D)**. A two-way ANOVA revealed significant differences between groups (\*\*\*\* for  $p<0.0001$  and \*\*\* for  $p=0.0003$ ). Data are presented as mean  $\pm$  SD.



**Figure 7.** Astrogliosis, cognitive deficits, but not amyloid plaque burden are some of the processes rescued in Tg-SwDI/Usp16<sup>+/-</sup> mice. **(A)** Anterior sections were obtained from 9 to 12 months old mice, stained, and counted for GFAP+ cells in the cortex. Four different images per sections and three sections per mouse were counted (n = 4). Bar graph shows quantification of GFAP+ cells from cortex. A one-way ANOVA showed significant differences between the groups (p=0.0012 between wild type (WT) and Tg-SwDI and p=0.0188 between Tg-SwDI and Tg-SwDI/Usp16<sup>+/-</sup>). Data are presented as mean ± SD. See also **Figure 7—figure supplement 1A**. **(B)** Representative images of thioflavin S on the left. On the right, quantification of area covered by plaques using thioflavin S staining in Tg-SwDI and Tg-SwDI/Usp16<sup>+/-</sup> mice shows no difference between the two genotypes (10-month-old mice). Data are presented as mean ± SEM. See also **Figure 7—figure supplement 1B**. **(C)** Novel object recognition 24 hr testing in mice at 6 months of age showed the earliest signs of cognitive impairment in the Tg-SwDI mice with a preference index (PI) of 49%, while WT and Tg-SwDI/Usp16<sup>+/-</sup> mice had PIs >65% indicating intact object discrimination (p=0.001 for WT and p=0.0099 for Tg-SwDI/Usp16<sup>+/-</sup>, n = 7–10 mice). Data are presented as mean ± SEM. See also **Figure 7—figure supplement 3**. **(D)** Schematic summarizing the temporal effects of mutant APP demonstrated in this manuscript.

The online version of this article includes the following figure supplement(s) for figure 7:

**Figure supplement 1.** Usp16 haploinsufficiency partially rescues GFAP+ cells in the Tg-SwDI cortex.

**Figure supplement 2.** No change in inflammation is present in Tg-SwDI or Tg-SwDI/Usp16<sup>+/-</sup> mice at 1-year old.

**Figure supplement 3.** Long-term and spatial memory was improved with Usp16 haploinsufficiency in Tg-SwDI mice.

(p<0.0001, **Figure 6B C**; Yu et al., 2008). Furthermore, when we treated neurospheres expressing mutant APP with LDN-193189 for a week, the number of colonies originating from those cells were similar to control cells and significantly higher than untreated mutant APP neurospheres (**Figure 6D E**). Notably, LDN-193189 had minimal impact on ZsGreen control neurosphere growth (**Figure 6E**). This finding demonstrates that the decrease in NIC frequency observed with mutant APP could be explained in part by the upregulation of BMP signaling. Moreover, BMPR inhibition rescues this defect in cells overexpressing mutant APP at doses that have minimal toxicity on healthy cells. Altogether, these data reveal that BMP signaling enrichment is recapitulated in human NPCs expressing mutant APP, and that BMPR inhibition normalizes the stem cell defect.

### Astrogliosis is reduced and cognitive function is restored in Tg-SwDI/Usp16<sup>+/-</sup> mice

Having identified USP16 as a target to modulate two critical pathways affected by mutations in APP, Cdkn2a, and BMP, we further investigated USP16's potential effects on downstream pathophysiological markers of AD that are recapitulated in the Tg-SwDI model such as astrogliosis, inflammation, amyloid plaques and memory. Increased numbers of GFAP+ astrocytes were seen throughout the cortex of 9–12-month-old Tg-SwDI mice, which could mark the beginning of astrogliosis, and were

significantly reduced with *Usp16* haploinsufficiency (**Figure 7A**, **Figure 7—figure supplement 1A**, see also **Figure 3—figure supplement 2**).

Amyloid plaques are one of the defining features of AD, and controversy exists concerning the effect of plaques on cognitive decline. Mutations in *APP* lead to amyloid plaque deposition throughout the brain as seen in 10-month-old Tg-SwDI mice (**Figure 7B**, **Figure 7—figure supplement 1B**). However, no difference was observed in plaque burden, demonstrated by Thioflavin S staining, in the age-matched Tg-SwDI/*Usp16*<sup>+/-</sup> mice (**Figure 7B**, **Figure 7—figure supplement 1B**). In addition, a Luminex screen of 1-year-old Tg-SwDI/*Usp16*<sup>+/-</sup> mice also did not reveal significant differences in the levels of inflammatory cytokines from any of the groups (**Figure 7—figure supplement 2A–C**).

As expected, when studying the cognitive decline in the Tg-SwDI cohort, we found that the Tg-SwDI cohort exhibited impaired performance in the NOR task as early as 6 months of age, with preference indexes (PIs) that were not significantly different 24 hr after training, indicating no memory of the familiar object (**Figure 7C**). The Tg-SwDI/*Usp16*<sup>+/-</sup> mice performed equally to their age-matched WT controls indicating memory of the familiar object with PIs in the 65–70% range ( $p=0.001$  and  $p=0.0099$ , respectively; **Figure 7C**). Long-term memory impairment in Tg-SwDI mice and rescue in Tg-SwDI/*Usp16*<sup>+/-</sup> mice was further supported by the Barnes maze (BM) where Tg-SwDI mice spent more time exploring off-target quadrants and Tg-SwDI/*Usp16*<sup>+/-</sup> mice spent more time in the target quadrant ( $p=0.0128$  and  $p=0.0251$ , respectively; **Figure 7—figure supplement 3**). These data indicate that although modulating *Usp16* gene dosage does not affect amyloid plaque burden, it ameliorates stem cell self-renewal defects that may be the earliest indication of pathology, as well as some of the cognitive defects in these mice that occur later (**Figure 7D**).

## Discussion

Numerous studies have sought to target processes such as inflammation, amyloid plaque accumulation, and ROS to AD pathologies in both humans and mouse models (**Gjoneska et al., 2015**; **Sevigny et al., 2016**). The lack of robust efficacy in trials that utilize therapies directed against amyloid and inflammatory pathways, even when initiated relatively early in the disease (**Selkoe, 2019**; **Imbimbo et al., 2010**), suggests that other mechanisms are at play. If so, identification of these other disease mechanisms is needed to develop effective treatments (**Aisen, 2008**; **Doody et al., 2013**; **Green et al., 2009**; **Group et al., 2008**; **Salloway et al., 2014**).

One of the primary findings in this study is that an NPC defect predates the development of measurable inflammation and amyloid plaque accumulation in a mutant *APP* model and that this defect is cell intrinsic. We further show this cell intrinsic NPC defect is reproduced in human fetal NPCs expressing *APP* Swedish and Indiana mutations, suggesting that our findings are translatable to other *APP* mutations and to human cells. The NPC defect that we discovered is partly regulated by *Cdkn2a*, a central component of aging responsible for decreased neurogenesis and differentiation of NPCs (**Abdoun et al., 2012**; **Molofsky et al., 2006**). Because *CDKN2A* expression has been correlated with sporadic AD (**Arendt et al., 1996**; **Lüth et al., 2000**; **McShea et al., 1997**) and targeting *CDKN2A* has shown benefit in improving age related and sporadic AD in models, we speculate our findings may have relevance for treatment of sporadic AD.

Current strategies to reverse neurogenesis defects include the use of drugs ('senolytics') that selectively remove p16<sup>Ink4a</sup>-positive senescent cells. Removal of the p16<sup>Ink4a</sup>-positive senescent cells, for instance, using a suicide gene under the regulation of the *Cdkn2a* promoter has been shown to attenuate progression of age-related decline and preserve cognitive function in both an accelerated aging AD mouse model and a tauopathy mouse model (**Baker et al., 2011**; **Bussian et al., 2018**). However, the use of a suicide gene is not directly translatable into humans, and other senolytics such as BCL2-inhibitors or the combination of Dasatinib and quercetin have toxicities which can limit their use (**Amaya-Montoya et al., 2020**; **Zhu et al., 2015**).

Here, we propose USP16 as a novel target that might circumvent many of the problems associated with *CDKN2A* inhibition or with senolytics' treatment. When we inhibited USP16 by making Tg-SwDI mice haploinsufficient for *Usp16* (Tg-SwDI/*Usp16*<sup>+/-</sup>), we found a rescue in the self-renewal of NPCs as early as 3 months of age. We also demonstrated a new role for USP16 in regulating the BMP pathway, a mechanism independent of *Cdkn2a*. Previously, Gargiulo et al. found that self-renewal gene *Bmi1*, whose PRC1 activity is counterbalanced by USP16, represses BMP signaling (**Gargiulo et al., 2013**). NPCs from *Bmi1* knockout mice treated with BMP4 experience even further growth arrest than those

untreated (*Gargiulo et al., 2013*). Furthermore, Kwak, Lohuizen, and colleagues showed that treatment of human neural stem cells with secreted APP $\alpha$  or overexpression of APP promoted phosphorylation of SMAD 1/5/8 and induced massive glial differentiation (by expression of GFAP) through the BMP pathway (*Kwak et al., 2014*). In line with this, our results reveal expression of mutant APP in human fetal NPCs induced phosphorylation of SMAD 1/5/8 and reduced neurosphere colony formation that was rescued by a BMP receptor inhibitor. Importantly, our data extends their findings of astrogliosis to an in vivo mouse model of AD. Interestingly, BMI1 regulates both *Cdkn2a* and the BMP pathway independently, and BMI1 expression was shown to be decreased in AD patients compared to age-matched controls (*Flamier et al., 2018*).

The timing of therapeutic treatment in AD seems to be crucial as studies have shown that treating the disease too late has little efficacy (*Sperling et al., 2011; Yiannopoulou et al., 2019*). The Tg-SwDI mice used in our study develop cognitive defects after the accumulation of amyloid beta plaques, a timeline which mimics that of humans with both dominantly inherited AD and late-onset sporadic AD (*Bateman et al., 2012*). In a study characterizing sporadic AD, for instance, Villemagne et al. used Pittsburgh compound B (PiB) positron emission tomography (PET) to show that 31% of healthy control subjects had high PiB retention indicating A $\beta$  deposition and of these, 25% developed mild cognitive impairment or AD by 3 years (*Villemagne et al., 2011*). Furthermore, studies such as those by Salloway et al. and Biogen's EMERGE and ENGAGE trials found that treating the plaques alone did not rescue cognitive defects (*Knopman et al., 2021; Salloway et al., 2014*). Although the mechanism for how mutant APP causes an NPC defect is outside the scope of this work, it has been postulated that amyloid- $\beta$  oligomers may impair neurogenesis and promote gliogenesis of human NPCs through the GSK-3 $\beta$  pathway which unfortunately is not amenable to inhibition as it phosphorylates a variety of substrates and incurs large cytotoxic off-target effects (*Bernabeu-Zornoza et al., 2019; Lee et al., 2013*). The translatability of our study therefore comes from observing that early therapeutic reduction of USP16 or BMP signaling in neural stem cells may reverse the neurogenic defect that may contribute to symptomatic AD later in life, especially if applied before cognitive deficits are present in the patient.

Understanding the pathophysiology of a disease is critical to developing therapeutic targets and designing intervening therapies. Here, we present USP16 as a potential therapeutic target acting on both BMP and *Cdkn2a* pathways independently. It is important to note that USP16 reduction also reduced astrocyte proliferation and restored cognitive function as measured by the NOR and Barnes Maze tests, independently of plaques and widespread inflammation. The increase in GFAP-expressing cells and impaired cognitive function seen in this AD model are purely attributable to mutant APP as Tg-SwDI mice do not develop neurofibrillary tangles that require mutations in tau (*Wilcock et al., 2008*). Thus, therapeutic strategies that combine targeting USP16, which effectively rescue the mutant APP-induced cell intrinsic damage, with agents that target extracellular plaque formation, neurofibrillary tangles, and/or inflammation may improve treatments for AD.

## Materials and methods

### Key resources table

Reagent type (species) or resource	Designation	Source or reference	Identifiers	Additional information
Gene ( <i>Homo sapiens</i> )	Tg-SwDI	<i>Davis et al., 2004</i>	APP KM670/671NL (Swedish), APP E693Q (Dutch), APP D694N (Iowa)	Transgenic mutant APP in mouse model with Swedish, Dutch, and Iowa mutations
Gene ( <i>Homo sapiens</i> )	APP SwI	<i>Young-Pearse et al., 2007</i>	APP K595N (Swedish), APP M596L and V642F (Indiana)	Mutant human APP in human neurosphere model with Swedish and Indiana mutations
Strain, strain background ( <i>Mus musculus</i> )	C57BL/6-Tg(Thy1-APPSwDutIowa)BWevn/Mmjax, C57Bl/6	The Jackson Laboratory	Jax Stock#: 007027; RRID:MMRRC_034843-JAX	Tg-SwDI mice
Strain, strain background ( <i>Mus musculus</i> )	FVB/N-Uspl6 <sup>TgTyr1241FOve</sup> /Mmjax, FVB	Mutant Mouse Regional Resource Centers	Jax Stock#: 036225-JAX; RRID:MMRRC_036225-JAX	Uspl6 <sup>+/+</sup> mice
Strain, strain background ( <i>Mus musculus</i> )	B6.129-Cdkn2a <sup>tm1R4p</sup> /Nci, B6.129	Mouse Models of Human Cancers Consortium	MMHCC strain:#01XB1; RRID:IMRS_NCIMR-01XB1	Cdkn2a <sup>-/-</sup> mice
Transfected construct ( <i>Homo sapiens</i> )	pHIV-ZsGreen	Addgene	RRID:Addgene_18121	Empty Lentiviral Backbone as control

Continued on next page

## Continued

Reagent type (species) or resource	Designation	Source or reference	Identifiers	Additional information
Transfected construct ( <i>Homo sapiens</i> )	APP Swl	This paper (cloned)	pHIV-APPSwl	To model mutant APP neurospheres
Transfected construct ( <i>Homo sapiens</i> )	APP WT	This paper (cloned)	pHIV-APP695	To model WT APP neurospheres
Biological sample ( <i>Mus musculus</i> )	Primary neural stem cells	The Jackson Laboratory	Tg-SwDI, WT, Tg-SwDI/ <i>Usp16<sup>fl/c</sup></i> , <i>Usp16<sup>fl/c</sup></i> , Tg-SwDI/ <i>Cdkn2a<sup>fl/c</sup></i> , <i>Cdkn2a<sup>fl/c</sup></i>	Freshly isolated from <i>M. musculus</i>
Biological sample ( <i>Homo sapiens</i> )	Primary human fetal neural stem cells	University of California Irvine		Isolated from 18 week fetal neural tissue, enriched for CD133+ cells
Antibody	anti-SOX2 (Goat polyclonal)	R&D Systems	Cat# AF2018, RRID:AB_355110	IHC(1:50)
Antibody	Anti-GFAP (Rabbit polyclonal)	Stem Cell Technologies	Cat#:60128, RRID:AB_1118515	IHC(1:500)
Antibody	Anti-pSMAD1/5/8 (Rabbit monoclonal)	CST	Cat#:9516, RRID:AB_491015	IF(1:100)
Antibody	Anti-beta-amyloid (Mouse monoclonal)	Invitrogen	Cat#:13-0200, RRID:AB_2532993	IF(1:100)
antibody	Pacific Blue anti-mouse CD31 Antibody (Rat monoclonal)	Biologend	Cat#:102421, RRID:AB_10613457	FACS(5 µl per test)
Antibody	Pacific Blue anti-mouse CD45 Antibody (Rat monoclonal)	Biologend	Cat#:103125, RRID:AB_493536	FACS(5 µl per test)
Antibody	Pacific Blue anti-mouse TER-119 Antibody (Rat monoclonal)	Biologend	Cat#116231, RRID:AB_2149212	FACS(5 µl per test)
Antibody	FITC anti-mouse CD24 Antibody (Rat monoclonal)	Biologend	Cat#101805, RRID:AB_312838	FACS(5 µl per test)
Recombinant DNA reagent	pCAX APP Swe/Ind (plasmid)	Addgene	RRID:Addgene_30145	Mutant APP with Swedish, Indiana mutations
Recombinant DNA reagent	pCAX APP 695	Addgene	RRID:Addgene_30137	Wild type APP
Recombinant DNA reagent	pHIV-Zsreen (plasmid)	Addgene	RRID:Addgene_18121	Lentiviral backbone
Commercial assay or kit	RNeasy Lipid Tissue Kit	Qiagen	Cat#: 74,804	
Commercial assay or kit	Click-iT Edu cell proliferation kit	Invitrogen	Cat#: C10337	
Commercial assay or kit	Nextera XT Library Sample Preparation Kit	Illumina	Cat#: FC-131-1096	
Chemical compound, drug	LDN-193189	Sigma Aldrich	S2618	5 nM and 50 nM
Software, algorithm	R	R	RRID:SCR_001905	Single cell RNA-seq
Software, algorithm	GSEA	<a href="http://www.broadinstitute.org/gsea/">http://www.broadinstitute.org/gsea/</a>	RRID:SCR_003199	Gene set enrichment analysis
Software, algorithm	ELDA	<a href="http://bioinf.wehi.edu.au/software/elda/">http://bioinf.wehi.edu.au/software/elda/</a>	RRID:SCR_018933	Limiting dilution experiments
Software, algorithm	ImageJ	<a href="https://imagej.net/">https://imagej.net/</a>	RRID:SCR_003070	IF analysis
Software, algorithm	Transcriptome Analysis Console	Thermo Fisher	RRID:SCR_016519	Microarray analysis
Other	DAPI stain	Sigma	32,670	IHC (1:10000)
Other	Thioflavin S	Sigma	1326-12-1	IHC (1%)
Other	Sytox Blue	Thermo Fisher	S11348	FACS

## Statistical analyses

In all the graphs, bars show average as central values and  $\pm$ SD as error bars, unless otherwise specified. *P* values were calculated using ANOVA in analyses with three or more groups. Tukey's method was used for multiple test correction with 95% simultaneous confidence levels. Two-tailed *t*-tests were used in analyses comparing two groups, unless otherwise specified. For limiting dilution analyses, ELDA software was used to test inequality between multiple groups. Expected frequencies are reported, as well as the 95% confidence intervals (lower and upper values are indicated). \**p*<0.05, \*\**p*<0.01, \*\*\**p*<0.001.

## Mice

Tg-SwDI mice (background C57Bl/6) were purchased from Jackson Laboratories and housed in cages of 5 mice. These mice were made hemizygous for experiments after breeding with *Cdkn2a<sup>fl/c</sup>* (C57Bl6



background) or *Usp16*<sup>+/-</sup> mice (back-crossed to B6EiC3). *Usp16*<sup>+/-</sup> mice were originally ordered from Mutant Mouse Regional Resource Centers (MMRRC) and *Cdkn2a*<sup>-/-</sup>(B6.129-*Cdkn2a*<sup>tm1Rdp</sup>) were obtained from Mouse Models of Human Cancers Consortium (NCI-Frederick). WT littermates were used as control mice. Mice were maintained in cages of 5 and genotyped by traditional PCR according to animal's provider. Mice were housed in accordance with the guidelines of Institutional Animal Care Use Committee. All animal procedures and behavioral studies involved in this manuscript are compliant to Stanford Administrative Panel on Laboratory Animal Care Protocol 10,868 pre-approved by the Stanford Institutional Animal Care and Use Committee.

## Immunohistochemistry

All animals were anesthetized with avertin and transcardially perfused with 15 ml phosphate-buffered saline (PBS). Brains were postfixed in 4% paraformaldehyde overnight at 4°C before cryoprotection in 30% sucrose. Brains were embedded in optimum cutting temperature (Tissue-Tek) and coronally sectioned at 40 µm using a sliding microtome (Leica, HM450). For immunohistochemistry, sections were stained using the Click-iT EdU cell proliferation kit and protocol (Invitrogen) to expose EdU labeling followed by incubation in blocking solution [3% normal donkey serum, 0.3% Triton X-100 in PBS] at room temperature for 1 hr. Goat antibody to Sox2 (anti-Sox2) (1:50; R&D Systems AF2018) and rabbit anti-GFAP (1:500; Stem Cell Technologies 60128) were diluted in 1% blocking solution (normal donkey serum in 0.3% Triton X-100 in PBS) and incubated overnight at 4°C. Secondary-only stains were performed as negative controls. The following day, sections were rinsed three times in ×1 PBS and incubated in secondary antibody solution (1:500) and 4',6-diamidino-2-phenylindole (DAPI) (1:10,000) in 1% blocking solution at 4°C for 4 hr. The following secondary antibodies were used: Alexa 594 donkey anti-rabbit (Jackson ImmunoResearch), Alexa 647 donkey anti-goat (Jackson ImmunoResearch). The next day, sections were rinsed three times in PBS and mounted with ProLong Gold Antifade (Cell Signaling) mounting medium. For senile plaques, sections were incubated for 8 min in aqueous 1% Thioflavin S (Sigma) at room temperature, washed in ethanol and mounted. Total plaque area from images taken of 6 sections (1 technical replicate = 1 section) were analyzed from each mouse with n = 3 mice (1 biological replicate = 1 mouse) in each group.

## Confocal imaging and quantification

All cell counting was performed by experimenters blinded to the experimental conditions using a Zeiss LSM700 scanning confocal microscope (Carl Zeiss). For EdU stereology, all EdU-labeled cells in every 6th coronal section of the SVZ were counted by blinded experimenters at ×40 magnification. The total number of EdU-labeled cells co-labeled with SOX2 and GFAP per SVZ was determined by multiplying the number of EdU\*GFAP\*SOX2<sup>+</sup> cells by 6. Cells were considered triple-labeled when they colocalized within the same plane.

## Mouse neurosphere cultures

To produce neurospheres, mice were euthanized by CO<sub>2</sub>, decapitated and the brain immediately removed. The subventricular zone was micro-dissected and stored in ice-cold PBS for further processing. The tissue was digested using Liberase DH (Roche) and DNase I (250 U/ml) at 37°C for 20 min followed by trituration. Digested tissue was washed in ice-cold HBSS without calcium and magnesium, filtered through a 40 µm filter and immediately put into neurosphere growth media that is, Neurobasal-A (Invitrogen) supplemented with Glutamax (Life Technologies), 2% B27-A (Invitrogen), mouse recombinant epidermal growth factor (EGF; 20 ng/ml) and basic fibroblast growth factor (bFGF; 20 ng/ml) (Shenandoah Biotechnology).

For limiting dilution analysis, cells were directly plated into 96-well ultra-low adherent plates (Corning Costar) in limiting dilutions down to one cell per well. Each plating dose was done in technical replicates of up to 12 wells in each experiment, and the number of wells with neurospheres was counted after 10 days. For passaging, neurospheres were dissociated and re-plated at a density of 10 cells/µl. Experiment was repeated three times (each infection and subsequent limiting dilution experiment performed being a biological replicate).

## RNA expression analyses (mouse)

For gene expression analyses, cells were collected in Trizol (Invitrogen), and RNA was extracted following the manufacturer's protocol. Complementary DNA was obtained using Superscript III First Strand Synthesis (Invitrogen). Real-time PCR reactions were assembled using Taqman probes (Applied Biosystems) in accordance with the manufacturer's directions. Expression data were normalized by the expression of housekeeping gene *Actb* (Mm00607939\_s1). Probes used in this study: *Cdkn2a* (Mm\_00494449), *Bmi1* (Mm03053308\_g1), *Il1b* (Mm01336189\_m1), *Il6* (Mm99999064\_m1), *Tnf* (Mm00443258\_m1), *Cox2* (Mm03294838\_g1), *Aspg* (Mm01339695\_m1), *C3* (Mm01232779\_m1), *Cd14* (Mm00438094\_g1), *Cd44* (Mm01277160\_m1), *Clcf1* (Mm01236492\_m1), *Emp1* (Mm00515678\_m1), *Gfap* (Mm01253033\_m1), *Ggta1* (Mm01333302\_m1), *S1pr3* (Mm00515669\_m1), *Serping1* (Mm00437835\_m1), *Slc10a6* (Mm00512730\_m1), *Srgn* (Mm01169070\_m1), *Stat3* (Mm01219775\_m1), *Vim* (Mm00449201\_m1). Biological replicates of a minimum of 3 mice and N = 2 technical replicates for each mouse were used.

## Microarray

SVZ, DG, and Cortex were dissected from 2-year-old mice, homogenized using Qiagen TissueRupture, and RNA was extracted using RNeasy Lipid Tissue Kit (Qiagen). RNA was submitted to Stanford PAN facility where amplification of cDNA and hybridization to Mouse Gene 2.0 ST array was performed. Microarray analyses were carried out using the TAC (Transcriptome Analysis Console) from ThermoFisher. TAC includes the normalization, probe summarization, and data quality control functions of Expression Console Software. The expression analysis settings were set as fold change <-2 or >2 with a p-value <0.05 using eBayes ANOVA method. The heat map clustering was generated using a gene list including the differentially expressed genes between WT and Tg-SwDI with a conditional F-test <0.05.

## Brain multianalyte analysis

The different brain regions were lysed using cell lysis buffer (Cell signaling #9803) with PMSF (Cell signaling #8553) and complete mini EDTA free protease inhibitor followed by mechanical homogenation by Tissue Ruptor (Qiagen). The samples were centrifuged at 13,000 rpm for 15 min and protein concentration calculated by BCA. Normalized samples were analyzed by the Stanford Human Immune Monitoring Center using a Luminex mouse 38-plex analyte platform that screens 38 secreted proteins using a multiplex fluorescent immunoassay. Brain homogenates were run in technical duplicates (2 wells with 200 µg each from each biology replicate) with three biological replicates (1 biological replicate = 1 brain from 1 mouse). The Luminex data (mean RFI) was generated by taking the raw fluorescence intensities of each sample and dividing by a control sample (one of the WT samples), then taking the average of the triplicated samples for each genotype.

## Behavioral testing

### Novel object recognition

One behavioral test used in this study for assessing long term memory was NOR<sup>67</sup> carried out in arenas (50cm × 50 cm × 50 cm) resting on an infra-red emitting base. Behavior was recorded by an infrared-sensitive camera placed 2.5 m above the arena. Data were stored and analyzed using Videotrack software from ViewPoint Life Sciences, Inc (Montreal, Canada) allowing the tracking of body trajectory/speed and the detection of the nose position. On the day before NOR training, the mouse was habituated to the apparatus by freely exploring the open arena. NOR is based on the preference of mice for a novel object versus a familiar object when allowed to explore freely. For NOR training, two identical objects were placed into the arena and the animals were allowed to explore for 10 min. Testing occurred 24 hr later in the same arena but one of the familiar objects used during training was replaced by a novel object of similar dimensions, and the animal was allowed to explore freely for 7 min. The objects and the arena were cleaned with 10% ethanol between trials. Exploration of the objects was defined by the time spent with the nose in a 2.5 cm zone around the objects. The PI was calculated as the ratio of the time spent exploring the novel object over the total time spent exploring the two objects. The PI was calculated for each animal and averaged among the groups of mice by genotype. The PI should not be significantly different from 50% in the training session, but is significantly different if novelty is detected.

## Barnes maze

Another test of long-term memory that is indicative of spatial memory is the Barnes Maze similar to that described by *Attar et al., 2013*. The Barnes maze is a 20-hole circular platform measuring 48" in diameter with holes cut 1.75" in diameter and 1" from the edge. The platform is elevated 100 cm above the floor, and is located in the center of a room with many extra-maze and intra-maze visual cues. This task takes advantage of the natural preference of rodents for a dark environment. Motivated to escape the bright lights and the open-space of the platform, rodents search for an escape hole that leads to a dark box beneath the maze and with training they learn to use distal visual cues to determine the spatial location of the escape hole. A habituation day was followed by training over 2 days and a test day separated by 24 hr. Two downward-facing 150-watt incandescent light bulbs mounted overhead served as an aversive stimulus. Mice completed three phases of testing: habituation, training, and the probe test.

For habituation, mice were placed within the start cylinder in the middle of the maze to ensure random orientation for 15 s. The overhead lights were then turned on and mice were given 3 min to independently enter through the target hole into the escape cage. If a mouse did not enter the escape box freely, the experimenter coaxed the mouse to enter the escape box by touching the mouse's tail.

For training, a mouse was placed in the middle of the maze in random orientation for 15 s. The overhead lights were turned on, and the tracking software was activated. The mouse was allowed up to 3 min to explore the maze and enter the escape hole. If it failed to enter within 3 min, it was gently guided to the escape hole using the start cylinder and allowed to enter the escape cage independently.

On the test/probe day, 24 hr after the last training day, the experiment was set up as described on training days, except the target hole was covered. The percent time in the correct zone and average proximity to the correct escape hole are more sensitive measures of memory than percentage visits to the correct hole. Therefore, during the probe phase, measures of time spent per quadrant and holes searched per quadrant were recorded. For these analyses, the maze was divided into quadrants consisting of five holes with the target hole in the center of the target quadrant. On day 4, latency (seconds) and path length (meters) to reach the target hole were measured. Number of pokes in each hole were calculated, time spent per quadrant and holes searched per quadrant were recorded and paired *t*-tests were used to compare the percentage of time spent between quadrants.

## Differentiation

Neurospheres derived from the SVZ of 1-year-old mice were dissociated into single cells and 2000 cells were cultured per well on PDL and laminin-coated adherent 96-well cell culture plates (mouse neurospheres used for differentiation). The cells were cultured in Neurobasal-A (Invitrogen) media containing 1% fetal bovine serum. After 6 days in culture, the cells were stained directly in the wells using the Stemcell Technologies protocol. Wells were incubated for 2 hr at room temperature in primary rabbit antibody to GFAP (1:200, Dako Z0334) followed by three washes in  $\times 1$  PBS and incubated in secondary antibody solution Alexa-647 goat anti-rabbit (1:500; Jackson ImmunoResearch) and 4',6-diamidino-2-phenylindole (DAPI) (1:10,000). Cells co-positive for GFAP and DAPI were counted using ImageJ and divided by total number of DAPI-positive cells. Experiment was performed with three biological replicates in triplicate (three technical replicates and three images were taken of differing regions of each technical replicate/well).

## Human neurosphere cultures

A human fetal neural stem cell line from University of California Irvine was developed from fetal neural tissue at eighteen-week gestational age enriched for CD133+ cells. The cells were negative for mycoplasma and viral contaminants using qPCR (IDEXX BioResearch) and had normal karyotype. The use of neural progenitor cells as non-hESC stem cells in this study is compliant to Stanford Stem Cell Research Oversight (SCRO) Protocol 194 pre-approved by the Internal Review Board (IRB)/SCRO of the Stanford Research Compliance Office (RCO). Informed consent was obtained, and standard material transfer agreement signed. Cells were grown in nonadherent ultra-low attachment well plates in X-VIVO 15 media (LONZA) supplemented with LIF (10 ng/ml), N2 Supplement, N-acetylcysteine (63 ug/ml), Heparin (2 ug/ml), EGF (20 ng/ml), and FGF (20 ng/ml).

For limiting dilution analysis, cells were directly plated into 96-well ultra-low adherent plates (Corning Costar) in limiting dilutions down to one cell per well. Each plating dose was done in technical replicates of up to 12 wells in each experiment, and the number of wells with neurospheres was counted after 10 days. Experiment was repeated three times (each infection and subsequent limiting dilution experiment performed being a biological replicate).

### Lentivirus production

pCAX APP Swe/Ind was a gift from Dennis Selkoe & Tracy Young-Pearse (Addgene plasmid #30145; <http://n2t.net/addgene:30145>; RRID:Addgene\_30145). pCAX APP 695 was a gift from Dennis Selkoe & Tracy Young-Pearse (Addgene plasmid #30137; <http://n2t.net/addgene:30137>; RRID:Addgene\_30137). pHIV-Zsgreen was a gift from Bryan Welm & Zena Werb (Addgene plasmid #18121; <http://n2t.net/addgene:18121>; RRID:Addgene\_18121). The cDNA for mutant APP harboring the Swedish and Indiana mutations or the cDNA for wild type APP from the plasmids listed above were each cloned into a pHIV-Zsgreen backbone obtained from Addgene (also listed above). Lipofectamine 2000 was used to transduce the construct (either pHIV-Zsgreen+mutant APP or pHIV-Zsgreen alone) into H293T cells and media was collected after 48 hr. Virus was ultra-centrifuged and resuspended in PBS then titered before infecting human fetal neurospheres.

### Flow cytometry

For single-cell RNA-sequencing, the subventricular zone of 4 mice from each genotype was micro-dissected and tissue digested using Liberase DH (Roche) and DNase I (250 U/ml) at 37°C for 20 min followed by trituration. Digested tissue was washed in ice-cold HBSS without calcium and magnesium, filtered through a 40 µm filter, and then stained with the following antibodies for 30 min: PacBlue-CD31 (Biolegend), PacBlue-CD45 (Biolegend), PacBlue-TER119 (Biolegend), and FITC-CD24 (Biolegend). Sytox Blue was used for cell death exclusion and samples were sorted into 384 well plates prepared with lysis buffer using the Sony Sorter.

### Lysis plate preparation

Lysis plates were created by dispensing 0.4 µl lysis buffer (0.5 U Recombinant RNase Inhibitor (Takara Bio, 2,313B), 0.0625% Triton X-100 (Sigma, 93443–100 ML), 3.125 mM dNTP mix (Thermo Fisher, R0193), 3.125 µM Oligo-dT30VN (IDT, 5'-AGCAGTGGTATCAACGCAGAGTACT30VN-3') and 1:600,000 ERCC RNA spike-in mix (Thermo Fisher, 4456740)) into 384-well hard-shell PCR plates (Biorad HSP3901) using a Tempest or Mantis liquid handler (Formulatrix).

### cDNA synthesis and library preparation

cDNA synthesis was performed using the Smart-seq2 protocol [1,2]. Illumina sequencing libraries were prepared according to the protocol in the Nextera XT Library Sample Preparation kit (Illumina, FC-131–1096). Each well was mixed with 0.8 µl Nextera tagmentation DNA buffer (Illumina) and 0.4 µl Tn5 enzyme (Illumina), then incubated at 55°C for 10 min. The reaction was stopped by adding 0.4 µl 'Neutralize Tagment Buffer' (Illumina) and spinning at room temperature in a centrifuge at 3220 × g for 5 min. Indexing PCR reactions were performed by adding 0.4 µl of 5 µM i5 indexing primer, 0.4 µl of 5 µM i7 indexing primer, and 1.2 µl of Nextera NPM mix (Illumina). PCR amplification was carried out on a ProFlex 2 × 384 thermal cycler using the following program: 1. 72°C for 3 min, 2. 95°C for 30 s, 3. 12 cycles of 95°C for 10 s, 55°C for 30 s, and 72°C for 1 min, and 4. 72°C for 5 min.

### Library pooling, quality control, and sequencing

Following library preparation, wells of each library plate were pooled using a Mosquito liquid handler (TTP Labtech). Pooling was followed by two purifications using ×0.7 AMPure beads (Fisher, A63881). Library quality was assessed using capillary electrophoresis on a Fragment Analyzer (AATI), and libraries were quantified by qPCR (Kapa Biosystems, KK4923) on a CFX96 Touch Real-Time PCR Detection System (Biorad). Plate pools were normalized to 2 nM and equal volumes from 10 or 20 plates were mixed together to make the sequencing sample pool. PhiX control library was spiked in at 0.2% before sequencing. Single-cell libraries were sequenced on the NovaSeq 6000 Sequencing System (Illumina) using 2 × 100 bp paired-end reads and 2 × 8 bp or 2 × 12 bp index reads with a 300-cycle kit (Illumina 20012860).

## Data processing

Sequences were collected from the sequencer and de-multiplexed using bcl2fastq version 2.19.0.316. Reads were aligned using to the mm10plus genome using STAR version 2.5.2b with parameters TK. Gene counts were produced using HTSEQ version 0.6.1p1 with default parameters, except 'stranded' was set to 'false,' and 'mode' was set to 'intersection-nonempty.' As mentioned above, four biological replicates from each genotype and at each age were combined for the single-cell RNA-seq experiment (16 samples per age group). Basic filtering of cells and genes was conducted pre-analysis using the Seurat package in R (Butler et al., 2018). Briefly, genes that were not expressed in a minimum of 5 cells were filtered out, and cells had to have a minimum of 50,000 reads and a maximum of 3,000,000 reads. Similarly, cells with less than 500 or more than 5000 genes were filtered out. This left us with the following numbers of cells below after filtering. In this experiment, a biological replicate is defined as 1 mouse of a specific genotype and a technical replicate is defined as one cell.

	3 and 4 months	1-year- old
WT	1008	980
Tg-SwDI	642	1089
Tg-SwDI/ <i>Usp16</i> <sup>-/-</sup>	712	729
<i>Usp16</i> <sup>-/-</sup>	651	731

## Gene set enrichment analysis

Gene counts were log normalized and scaled before generating the .gct files. GSEA with the Hallmarks gene sets was run with standard parameters: 1000 permutations of type phenotype, with no collapsing to gene symbols, and weighted enrichment. Gene sets were considered significantly enriched if FDR < 25%.

## Immunofluorescence (human neurospheres)

Neurospheres were cytopun onto slides and fixed in ice-cold methanol for 5 min. Slides were rinsed three times in PBS at room temperature, followed by blocking in 3% BSA in PBS for 1 hr at room temperature. Rabbit antibody to pSMAD 1/5/8 (1:100; CST 9516) and mouse antibody to beta-amyloid (1:100; Invitrogen 13–200) were diluted in the same 3% blocking buffer and incubated overnight at 4°C. The following day, sections were rinsed three times in ×1 PBS and incubated in secondary antibody solution Cy-3 donkey anti-rabbit (1:500; Jackson ImmunoResearch) or Cy-3 donkey anti-mouse (1:500; Jackson ImmunoResearch) and 4',6-diamidino-2-phenylindole (DAPI) (1:10,000) in 3% blocking solution at room temperature for 2 hr. Slides were then washed 3 times at room temperature in ×1 PBS and mounted. Cells positive for pSMAD 1/5/8 were counted by ImageJ. Experiment was performed three times (1 biological replicate = 1 round of infection with subsequent experiment) in triplicate (1 technical replicate = 1 slide with at least 3 neurospheres with 1 neurosphere having at least 100 cells).

## Colony counts

Human neurospheres were dissociated into single cells and infected with either a lentiviral construct containing pHIV-Zsfgreen+mutant *APP*, pHIV-Zsfgreen+wild type *APP*, or pHIV-Zsfgreen alone and allowed to grow for a week. Thereafter, cells were again dissociated and seeded at 5000 cells/well in a 24-well plate in triplicate. Cells were fed every day with ×20 media containing the appropriate amount of LDN-19389 (Selleckchem S2618). Colonies were counted after 7 days. Experiment was performed times times (1 biological replicate = 1 round of infection with subsequent experiment) in triplicate (1 technical replicate = 1 well).

## Acknowledgements

The authors thank several individuals, including Siddhartha Mitra, James Lennon, Sam Cheshier, Jordan Roselli, Stephen Ahn, Grace Hagiwara, Mike Alvarez, Pieter Both, Jami Wang, Ben W Dulken, Vincent M Alford, and Aisling Chaney. Flow cytometry analysis for this project was done on instruments in the Stanford Shared FACS Facility; BD FACSArial was purchased by NIH S10 shared instrumentation grant 1S10RR02933801. The authors thank the Stanford Neuroscience Microscopy Service, supported by

NIH NS069375. Funding: California Institute of Regenerative Medicine. Chan Zuckerberg Biohub. NIH R01AG059712. Harriet and CC. Tung Foundation – FR. AIRC and Marie Curie Action – BNdR – COFUND.

## Additional information

### Competing interests

Felicia Reinitz, Elizabeth Y Chen, Jane Antony, Robert C Jones, Michael F Clarke: filer of a provisional patent: U.S.Provisional Application No. 63/124,644 titled "Modulating BMP signaling in the treatment of Alzheimer's disease". Benedetta Nicolis di Robilant, Maddalena Adorno: is the co-founder of Dorian Therapeutics. Dorian therapeutics was incorporated in June 2018 and it is an early stage anti-aging company that focuses on the process of cellular senescence. Most of the experiments were performed before the company was formed. The other authors declare that no competing interests exist.

### Funding

Funder	Grant reference number	Author
California Institute of Regenerative Medicine	Graduate Student Fellowship	Elizabeth Y Chen
Chan Zucherberg Foundationg Biohub Initiative		Elizabeth Y Chen Robert C Jones Sai Saroja Kolluru Stephen R Quake
National Institutes of Health	1R01AG059712-01	Felicia Reinitz Elizabeth Y Chen Benedetta Nicolis di Robilant Jane Antony Neha Gubbi Dalong Qian Michael F Clarke
National Institutes of Health	AG059712	Michael F Clarke
Tung Foundation		Felicia Reinitz
AIRC and Marie Curie Action		Benedetta Nicolis di Robilant

The funders had no role in study design, data collection, and interpretation, or the decision to submit the work for publication.

### Author contributions

Felicia Reinitz, Conceptualization, Formal analysis, Investigation, Methodology, Project administration, Validation, Visualization, Writing – original draft, Writing – review and editing; Elizabeth Y Chen, Conceptualization, Data curation, Formal analysis, Investigation, Methodology, Project administration, Software, Validation, Visualization, Writing – original draft, Writing – review and editing; Benedetta Nicolis di Robilant, Conceptualization, Formal analysis, Investigation, Project administration, Validation, Visualization, Writing – original draft, Writing – review and editing; Bayarsaikhan Chuluun, Investigation, Project administration, Validation; Jane Antony, Formal analysis, Investigation, Validation, Writing – review and editing; Robert C Jones, Data curation, Project administration, Resources, Software; Neha Gubbi, Investigation, Validation; Karen Lee, Investigation; William Hai Dang Ho, Investigation, Resources; Sai Saroja Kolluru, Project administration, Resources; Dalong Qian, Funding acquisition, Project administration, Resources; Maddalena Adorno, Supervision; Katja Piltti, Aileen Anderson, Methodology, Resources; Michelle Monje, Conceptualization, Resources, Supervision, Writing – review and editing; H Craig Heller, Resources, Supervision; Stephen R Quake, Funding acquisition, Resources, Supervision; Michael F Clarke, Conceptualization, Funding acquisition, Resources, Supervision, Writing – review and editing

**Author ORCIDs**

Felicia Reinitz <http://orcid.org/0000-0003-4952-4457>  
 Robert C Jones <http://orcid.org/0000-0001-7235-9854>  
 Aileen Anderson <http://orcid.org/0000-0002-8203-8891>  
 Michelle Monje <http://orcid.org/0000-0002-3547-237X>  
 H Craig Heller <http://orcid.org/0000-0003-4479-5880>  
 Stephen R Quake <http://orcid.org/0000-0002-1613-0809>  
 Michael F Clarke <http://orcid.org/0000-0001-6889-4926>

**Ethics**

Mice were housed in accordance with the guidelines of Institutional Animal Care Use Committee. All animal procedures and behavioral studies involved in this manuscript are compliant to Stanford Administrative Panel on Laboratory Animal Care (APLAC) Protocol 10868 pre-approved by the Stanford Institutional Animal Care and Use Committee (IACUC).

**Decision letter and Author response**

Decision letter <https://doi.org/10.7554/eLife.66037.sa1>  
 Author response <https://doi.org/10.7554/eLife.66037.sa2>

**Additional files****Supplementary files**

- Transparent reporting form

**Data availability**

Datasets generated are available on Dryad Digital Repository (<https://doi.org/10.5061/dryad.mpg4f4qz0> and <https://doi.org/10.5061/dryad.vx0k6djtf>).

The following datasets were generated:

Author(s)	Year	Dataset title	Dataset URL	Database and Identifier
Chen E, Jones R, Clarke M, Quake S	2022	Single-Cell RNA-sequencing of neural precursor cells from an Alzheimer's mouse model, wild-type mice, and Alzheimer's mice rescued with Usp16 haploinsufficiency	<a href="https://doi.org/10.5061/dryad.mpg4f4qz0">https://doi.org/10.5061/dryad.mpg4f4qz0</a>	Dryad Digital Repository, 10.5061/dryad.mpg4f4qz0
Reinitz F, Clarke M, Nicolis di Robilant B	2022	Microarray analysis of subventricular zone, hippocampus, and cortex from an Alzheimer's mouse model, wild-type mice, and Alzheimer's mice rescued with Usp16 haploinsufficiency	<a href="https://doi.org/10.5061/dryad.vx0k6djtf">https://doi.org/10.5061/dryad.vx0k6djtf</a>	Dryad Digital Repository, 10.5061/dryad.vx0k6djtf

**References**

- Abdough M**, Chato W, El Hajjar J, David J, Ferreira J, Bernier G. 2012. Bmi1 is down-regulated in the aging brain and displays antioxidant and protective activities in neurons. *PLOS ONE* **7**:e31870. DOI: <https://doi.org/10.1371/journal.pone.0031870>, PMID: 22384090
- Adorno M**, Sikandar S, Mitra SS, Kuo A, Nicolis Di Robilant B, Haro-Acosta V, Ouadah Y, Quarta M, Rodriguez J, Qian D, Reddy VM, Cheshier S, Garner CC, Clarke MF. 2013. Usp16 contributes to somatic stem-cell defects in Down's syndrome. *Nature* **501**:380–384. DOI: <https://doi.org/10.1038/nature12530>, PMID: 24025767
- Aisen PS**. 2008. Tarenflurbil: a shot on goal. *The Lancet. Neurology* **7**:468–469. DOI: [https://doi.org/10.1016/S1474-4422\(08\)70091-7](https://doi.org/10.1016/S1474-4422(08)70091-7), PMID: 18450518
- Akiyama H**, Barger S, Barnum S, Bradt B, Bauer J, Cole GM, Cooper NR, Eikelenboom P, Emmerling M, Fiebich BL, Finch CE, Frautschy S, Griffin WS, Hampel H, Hull M, Landreth G, Lue L, Mrak R, Mackenzie IR, McGeer PL, et al. 2000. Inflammation and Alzheimer's disease. *Neurobiology of Aging* **21**:383–421. DOI: [https://doi.org/10.1016/s0197-4580\(00\)00124-x](https://doi.org/10.1016/s0197-4580(00)00124-x), PMID: 10858586

- Alipour M**, Nabavi SM, Arab L, Vosough M, Pakdaman H, Ehsani E, Shahpasand K. 2019. Stem cell therapy in Alzheimer's disease: possible benefits and limiting drawbacks. *Molecular Biology Reports* **46**:1425–1446. DOI: <https://doi.org/10.1007/s11033-018-4499-7>, PMID: 30565076
- Amaya-Montoya M**, Pérez-Londoño A, Guatibonza-García V, Vargas-Villanueva A, Mendivil CO. 2020. Cellular Senescence as a Therapeutic Target for Age-Related Diseases: A Review. *Advances in Therapy* **37**:1407–1424. DOI: <https://doi.org/10.1007/s12325-020-01287-0>, PMID: 32185730
- Apostolopoulou M**, Kiehl TR, Winter M, Cardenas De La Hoz E, Boles NC, Bjornsson CS, Zuloaga KL, Goderie SK, Wang Y, Cohen AR, Temple S. 2017. Non-monotonic Changes in Progenitor Cell Behavior and Gene Expression during Aging of the Adult V-SVZ Neural Stem Cell Niche. *Stem Cell Reports* **9**:1931–1947. DOI: <https://doi.org/10.1016/j.stemcr.2017.10.005>, PMID: 29129683
- Arendt T**, Rödel L, Gärtner U, Holzer M. 1996. Expression of the cyclin-dependent kinase inhibitor p16 in Alzheimer's disease. *Neuroreport* **7**:3047–3049. DOI: <https://doi.org/10.1097/00001756-199611250-00050>, PMID: 9116237
- Attar A**, Liu T, Chan W-TC, Hayes J, Nejad M, Lei K, Bitan G. 2013. A shortened Barnes maze protocol reveals memory deficits at 4-months of age in the triple-transgenic mouse model of Alzheimer's disease. *PLOS ONE* **8**:e80355. DOI: <https://doi.org/10.1371/journal.pone.0080355>, PMID: 24236177
- Baker DJ**, Wijshake T, Tchkonja T, LeBrasseur NK, Childs BG, van de Sluis B, Kirkland JL, van Deursen JM. 2011. Clearance of p16Ink4a-positive senescent cells delays ageing-associated disorders. *Nature* **479**:232–236. DOI: <https://doi.org/10.1038/nature10600>, PMID: 22048312
- Bateman RJ**, Xiong C, Benzinger TLS, Fagan AM, Goate A, Fox NC, Marcus DS, Cairns NJ, Xie X, Blazey TM, Holtzman DM, Santacruz A, Buckles V, Oliver A, Moulder K, Aisen PS, Ghetti B, Klunk WE, McDade E, Martins RN, et al. 2012. Clinical and biomarker changes in dominantly inherited Alzheimer's disease. *The New England Journal of Medicine* **367**:795–804. DOI: <https://doi.org/10.1056/NEJMoa1202753>, PMID: 22784036
- Bernabeu-Zornoza A**, Coronel R, Palmer C, Monteagudo M, Zambrano A, Liste I. 2019. Physiological and pathological effects of amyloid-beta species in neural stem cell biology. *Neural Regeneration Research* **14**:2035–2042. DOI: <https://doi.org/10.4103/1673-5374.262571>, PMID: 31397330
- Bruggeman SWM**, Valk-Lingbeek ME, van der Stoop PPM, Jacobs JLL, Kieboom K, Tanger E, Hulsman D, Leung C, Arsenijevic Y, Marino S, van Lohuizen M. 2005. Ink4a and Arf differentially affect cell proliferation and neural stem cell self-renewal in Bmi1-deficient mice. *Genes & Development* **19**:1438–1443. DOI: <https://doi.org/10.1101/gad.1299305>, PMID: 15964995
- Bussian TJ**, Aziz A, Meyer CF, Swenson BL, van Deursen JM, Baker DJ. 2018. Clearance of senescent glial cells prevents tau-dependent pathology and cognitive decline. *Nature* **562**:578–582. DOI: <https://doi.org/10.1038/s41586-018-0543-y>, PMID: 30232451
- Butler A**, Hoffman P, Smibert P, Papalexis E, Satija R. 2018. Integrating single-cell transcriptomic data across different conditions, technologies, and species. *Nature Biotechnology* **36**:411–420. DOI: <https://doi.org/10.1038/nbt.4096>, PMID: 29608179
- Castellani RJ**, Rolston RK, Smith MA. 2010. Alzheimer disease. *Disease-a-Month* **56**:484–546. DOI: <https://doi.org/10.1016/j.disamonth.2010.06.001>, PMID: 20831921
- Chang J**, Dettman RW, Dizon MLV. 2018. Bone morphogenetic protein signaling: a promising target for white matter protection in perinatal brain injury. *Neural Regeneration Research* **13**:1183–1184. DOI: <https://doi.org/10.4103/1673-5374.235025>, PMID: 30028321
- Chehrehasa F**, Meedeniya ACB, Dwyer P, Abrahamsen G, Mackay-Sim A. 2009. EdU, a new thymidine analogue for labelling proliferating cells in the nervous system. *Journal of Neuroscience Methods* **177**:122–130. DOI: <https://doi.org/10.1016/j.jneumeth.2008.10.006>, PMID: 18996411
- Chen E**, Jones R, Clarke M, Quake S. 2022. Single-Cell RNA-sequencing of neural precursor cells from an Alzheimer's mouse model, wild-type mice, and Alzheimer's mice rescued with Usp16 haploinsufficiency. *Dryad Digital Repository*. DOI: <https://doi.org/10.5061/dryad.mpg4f4qz0>
- Davis J**, Xu F, Deane R, Romanov G, Previti ML, Zeigler K, Zlokovic BV, Van Nostrand WE. 2004. Early-onset and robust cerebral microvascular accumulation of amyloid beta-protein in transgenic mice expressing low levels of a vasculotropic Dutch/Iowa mutant form of amyloid beta-protein precursor. *The Journal of Biological Chemistry* **279**:20296–20306. DOI: <https://doi.org/10.1074/jbc.M312946200>, PMID: 14985348
- Doody RS**, Raman R, Farlow M, Iwatsubo T, Vellas B, Joffe S, Kieburtz K, He F, Sun X, Thomas RG, Aisen PS, Siemers E, Sethuraman G, Mohs R, Alzheimer's Disease Cooperative Study Steering Committee, Semagacestat Study Group. 2013. A phase 3 trial of semagacestat for treatment of Alzheimer's disease. *The New England Journal of Medicine* **369**:341–350. DOI: <https://doi.org/10.1056/NEJMoa1210951>, PMID: 23883379
- Ennaceur A**, Delacour J. 1988. A new one-trial test for neurobiological studies of memory in rats. 1: Behavioral data. *Behavioural Brain Research* **31**:47–59. DOI: [https://doi.org/10.1016/0166-4328\(88\)90157-x](https://doi.org/10.1016/0166-4328(88)90157-x), PMID: 3228475
- Essers MAG**, Offner S, Blanco-Bose WE, Waibler Z, Kalinke U, Duchosal MA, Trumpp A. 2009. IFN $\alpha$  activates dormant haematopoietic stem cells in vivo. *Nature* **458**:904–908. DOI: <https://doi.org/10.1038/nature07815>, PMID: 19212321
- Fasano CA**, Phoenix TN, Kokovay E, Lowry N, Elkabetz Y, Dimos JT, Lemischka IR, Studer L, Temple S. 2009. Bmi-1 cooperates with Foxg1 to maintain neural stem cell self-renewal in the forebrain. *Genes & Development* **23**:561–574. DOI: <https://doi.org/10.1101/gad.1743709>, PMID: 19270157
- Flamier A**, El Hajjar J, Adjaye J, Fernandes KJ, Abdouh M, Bernier G. 2018. Modeling Late-Onset Sporadic Alzheimer's Disease through BMI1 Deficiency. *Cell Reports* **23**:2653–2666. DOI: <https://doi.org/10.1016/j.celrep.2018.04.097>, PMID: 29847796



- Gargiulo G**, Cesaroni M, Serresi M, de Vries N, Hulsman D, Bruggeman SW, Lancini C, van Lohuizen M. 2013. In vivo RNAi screen for BMI1 targets identifies TGF-beta/BMP-ER stress pathways as key regulators of neural- and malignant glioma-stem cell homeostasis. *Cancer Cell* **23**:660–676. DOI: <https://doi.org/10.1016/j.ccr.2013.03.030>, PMID: 23680149
- Gjoneska E**, Pfenning AR, Mathys H, Quon G, Kundaje A, Tsai LH, Kellis M. 2015. Conserved epigenomic signals in mice and humans reveal immune basis of Alzheimer's disease. *Nature* **518**:365–369. DOI: <https://doi.org/10.1038/nature14252>, PMID: 25693568
- Glass CK**, Saijo K, Winner B, Marchetto MC, Gage FH. 2010. Mechanisms underlying inflammation in neurodegeneration. *Cell* **140**:918–934. DOI: <https://doi.org/10.1016/j.cell.2010.02.016>, PMID: 20303880
- Green RC**, Schneider LS, Amato DA, Beelen AP, Wilcock G, Swabb EA, Zavitz KH, Tarenfluril Phase 3 Study Group. 2009. Effect of tarenfluril on cognitive decline and activities of daily living in patients with mild Alzheimer disease: a randomized controlled trial. *JAMA* **302**:2557–2564. DOI: <https://doi.org/10.1001/jama.2009.1866>, PMID: 20009055
- Group ADC**, Bentham P, Gray R, Sellwood E, Hills R, Crome P, Raftery J. 2008. Aspirin in Alzheimer's disease (AD2000): a randomised open-label trial. *The Lancet. Neurology* **7**:41–49. DOI: [https://doi.org/10.1016/S1474-4422\(07\)70293-4](https://doi.org/10.1016/S1474-4422(07)70293-4), PMID: 18068522
- Haughey NJ**, Liu D, Nath A, Borchard AC, Mattson MP. 2002. Disruption of neurogenesis in the subventricular zone of adult mice, and in human cortical neuronal precursor cells in culture, by amyloid beta-peptide: implications for the pathogenesis of Alzheimer's disease. *Neuromolecular Medicine* **1**:125–135. DOI: <https://doi.org/10.1385/NMM:1:2:125>, PMID: 12025858
- Hebert LE**, Weuve J, Scherr PA, Evans DA. 2013. Alzheimer disease in the United States (2010–2050) estimated using the 2010 census. *Neurology* **80**:1778–1783. DOI: <https://doi.org/10.1212/WNL.0b013e31828726f5>, PMID: 23390181
- Hu Y**, Smyth GK. 2009. ELDA: extreme limiting dilution analysis for comparing depleted and enriched populations in stem cell and other assays. *Journal of Immunological Methods* **347**:70–78. DOI: <https://doi.org/10.1016/j.jim.2009.06.008>, PMID: 19567251
- Huang Y**, Mucke L. 2012. Alzheimer mechanisms and therapeutic strategies. *Cell* **148**:1204–1222. DOI: <https://doi.org/10.1016/j.cell.2012.02.040>, PMID: 22424230
- Hussussian CJ**, Struewing JP, Goldstein AM, Higgins PA, Ally DS, Sheahan MD, Clark WH Jr, Tucker MA, Dracopoli NC. 1994. Germline p16 mutations in familial melanoma. *Nature Genetics* **8**:15–21. DOI: <https://doi.org/10.1038/ng0994-15>, PMID: 7987387
- Imbimbo BP**, Solfrizzi V, Panza F. 2010. Are NSAIDs useful to treat Alzheimer's disease or mild cognitive impairment *Frontiers in Aging Neuroscience* **2**:19. DOI: <https://doi.org/10.3389/fnagi.2010.00019>, PMID: 20725517
- Joo H-Y**, Zhai L, Yang C, Nie S, Erdjument-Bromage H, Tempst P, Chang C, Wang H. 2007. Regulation of cell cycle progression and gene expression by H2A deubiquitination. *Nature* **449**:1068–1072. DOI: <https://doi.org/10.1038/nature06256>, PMID: 17914355
- Knopman DS**, Jones DT, Greicius MD. 2021. Failure to demonstrate efficacy of aducanumab: An analysis of the EMERGE and ENGAGE trials as reported by Biogen. *Alzheimer's & Dementia* **17**:696–701. DOI: <https://doi.org/10.1002/alz.12213>, PMID: 33135381
- Krishnamurthy J**, Ramsey MR, Ligon KL, Torrice C, Koh A, Bonner-Weir S, Sharpless NE. 2006. p16INK4a induces an age-dependent decline in islet regenerative potential. *Nature* **443**:453–457. DOI: <https://doi.org/10.1038/nature05092>, PMID: 16957737
- Kwak YD**, Hendrix BJ, Sugaya K. 2014. Secreted type of amyloid precursor protein induces glial differentiation by stimulating the BMP/Smad signaling pathway. *Biochemical and Biophysical Research Communications* **447**:394–399. DOI: <https://doi.org/10.1016/j.bbrc.2014.03.139>, PMID: 24727450
- Lee IS**, Jung K, Kim IS, Park KI. 2013. Amyloid-beta oligomers regulate the properties of human neural stem cells through GSK-3beta signaling. *Experimental & Molecular Medicine* **45**:e60. DOI: <https://doi.org/10.1038/emm.2013.125>, PMID: 24232259
- Leeman DS**, Hebestreit K, Ruetz T, Webb AE, McKay A, Pollina EA, Dulken BW, Zhao X, Yeo RW, Ho TT, Mahmoudi S, Devarajan K, Passequé E, Rando TA, Frydman J, Brunet A. 2018. Lysosome activation clears aggregates and enhances quiescent neural stem cell activation during aging. *Science (New York, N.Y.)* **359**:1277–1283. DOI: <https://doi.org/10.1126/science.aag3048>, PMID: 29590078
- López-Toledano MA**, Shelanski ML. 2004. Neurogenic effect of beta-amyloid peptide in the development of neural stem cells. *The Journal of Neuroscience* **24**:5439–5444. DOI: <https://doi.org/10.1523/JNEUROSCI.0974-04.2004>, PMID: 15190117
- Lüth HJ**, Holzer M, Gertz HJ, Arendt T. 2000. Aberrant expression of nNOS in pyramidal neurons in Alzheimer's disease is highly co-localized with p21ras and p16INK4a. *Brain Research* **852**:45–55. DOI: [https://doi.org/10.1016/s0006-8993\(99\)02178-2](https://doi.org/10.1016/s0006-8993(99)02178-2), PMID: 10661494
- McShea A**, Harris PL, Webster KR, Wahl AF, Smith MA. 1997. Abnormal expression of the cell cycle regulators P16 and CDK4 in Alzheimer's disease. *The American Journal of Pathology* **150**:1933–1939. PMID: 9176387.
- Meyers EA**, Gobeske KT, Bond AM, Jarrett JC, Peng CY, Kessler JA. 2016. Increased bone morphogenetic protein signaling contributes to age-related declines in neurogenesis and cognition. *Neurobiology of Aging* **38**:164–175. DOI: <https://doi.org/10.1016/j.neurobiolaging.2015.10.035>, PMID: 26827654
- Miao J**, Xu F, Davis J, Otte-Höller I, Verbeek MM, Van Nostrand WE. 2005. Cerebral microvascular amyloid beta protein deposition induces vascular degeneration and neuroinflammation in transgenic mice expressing human

- vasculotropic mutant amyloid beta precursor protein. *The American Journal of Pathology* **167**:505–515. DOI: [https://doi.org/10.1016/s0002-9440\(10\)62993-8](https://doi.org/10.1016/s0002-9440(10)62993-8), PMID: 16049335
- Molofsky AV**, Pardal R, Iwashita T, Park IK, Clarke MF, Morrison SJ. 2003. Bmi-1 dependence distinguishes neural stem cell self-renewal from progenitor proliferation. *Nature* **425**:962–967. DOI: <https://doi.org/10.1038/nature02060>, PMID: 14574365
- Molofsky AV**, He S, Bydon M, Morrison SJ, Pardal R. 2005. Bmi-1 promotes neural stem cell self-renewal and neural development but not mouse growth and survival by repressing the p16INK4a and p19Arf senescence pathways. *Genes & Development* **19**:1432–1437. DOI: <https://doi.org/10.1101/gad.1299505>, PMID: 15964994
- Molofsky AV**, Slutsky SG, Joseph NM, He S, Pardal R, Krishnamurthy J, Sharpless NE, Morrison SJ. 2006. Increasing p16INK4a expression decreases forebrain progenitors and neurogenesis during ageing. *Nature* **443**:448–452. DOI: <https://doi.org/10.1038/nature05091>, PMID: 16957738
- Mootha VK**, Lindgren CM, Eriksson K-F, Subramanian A, Sihag S, Lehar J, Puigserver P, Carlsson E, Ridderstråle M, Laurila E, Houstis N, Daly MJ, Patterson N, Mesirov JP, Golub TR, Tamayo P, Spiegelman B, Lander ES, Hirschhorn JN, Altshuler D, et al. 2003. PGC-1alpha-responsive genes involved in oxidative phosphorylation are coordinately downregulated in human diabetes. *Nature Genetics* **34**:267–273. DOI: <https://doi.org/10.1038/ng1180>, PMID: 12808457
- Mu Y**, Gage FH. 2011. Adult hippocampal neurogenesis and its role in Alzheimer's disease. *Molecular Neurodegeneration* **6**:85. DOI: <https://doi.org/10.1186/1750-1326-6-85>, PMID: 22192775
- Neuropathology Group. Medical Research Council Cognitive Function and Aging Study**. 2001. Pathological correlates of late-onset dementia in a multicentre, community-based population in England and Wales. *Lancet* **357**:169–175. DOI: [https://doi.org/10.1016/s0140-6736\(00\)03589-3](https://doi.org/10.1016/s0140-6736(00)03589-3), PMID: 11213093
- Osborn LM**, Kamphuis W, Wadman WJ, Hol EM. 2016. Astroglialosis: An integral player in the pathogenesis of Alzheimer's disease. *Progress in Neurobiology* **144**:121–141. DOI: <https://doi.org/10.1016/j.pneurobio.2016.01.001>, PMID: 26797041
- Ower AK**, Hadjichrysanthou C, Gras L, Goudsmit J, Anderson RM, de Wolf F, Alzheimer's Disease Neuroimaging Initiative. 2018. Temporal association patterns and dynamics of amyloid-beta and tau in Alzheimer's disease. *European Journal of Epidemiology* **33**:657–666. DOI: <https://doi.org/10.1007/s10654-017-0326-z>, PMID: 29071500
- Park I**, Qian D, Kiel M, Becker MW, Pihajla M, Weissman IL, Morrison SJ, Clarke MF. 2003. Bmi-1 is required for maintenance of adult self-renewing haematopoietic stem cells. *Nature* **423**:302–305. DOI: <https://doi.org/10.1038/nature01587>, PMID: 12714971
- Pastrana E**, Silva-Vargas V, Doetsch F. 2011. Eyes wide open: a critical review of sphere-formation as an assay for stem cells. *Cell Stem Cell* **8**:486–498. DOI: <https://doi.org/10.1016/j.stem.2011.04.007>, PMID: 21549325
- Reinitz FF**, Clarke M, Nicolis di Robilant B. 2022. Microarray analysis of subventricular zone, hippocampus, and cortex from an Alzheimer's mouse model, wild-type mice, and Alzheimer's mice rescued with Usp16 haploinsufficiency. *Dryad Digital Repository*. DOI: <https://doi.org/10.5061/dryad.vx0k6djtf>
- Rodríguez JJ**, Jones VC, Verkhatsky A. 2009. Impaired cell proliferation in the subventricular zone in an Alzheimer's disease model. *Neuroreport* **20**:907–912. DOI: <https://doi.org/10.1097/WNR.0b013e3283232be77d>, PMID: 19494789
- Rodríguez JJ**, Verkhatsky A. 2011. Neurogenesis in Alzheimer's disease. *Journal of Anatomy* **219**:78–89. DOI: <https://doi.org/10.1111/j.1469-7580.2011.01343.x>, PMID: 21323664
- Sakamoto M**, Ieki N, Miyoshi G, Mochimaru D, Miyachi H, Imura T, Yamaguchi M, Fishell G, Mori K, Kageyama R, Imayoshi I. 2014. Continuous postnatal neurogenesis contributes to formation of the olfactory bulb neural circuits and flexible olfactory associative learning. *The Journal of Neuroscience* **34**:5788–5799. DOI: <https://doi.org/10.1523/JNEUROSCI.0674-14.2014>, PMID: 24760839
- Salloway S**, Sperling R, Fox NC, Blennow K, Klunk W, Raskind M, Sabbagh M, Honig LS, Porsteinsson AP, Ferris S, Reichert M, Ketter N, Nejadnik B, Guenzler V, Miloslavsky M, Wang D, Lu Y, Lull J, Tudor IC, Liu E, et al. 2014. Two phase 3 trials of bapineuzumab in mild-to-moderate Alzheimer's disease. *The New England Journal of Medicine* **370**:322–333. DOI: <https://doi.org/10.1056/NEJMoa1304839>, PMID: 24450891
- Scheeren FA**, Kuo AH, van Weele LJ, Cai S, Glykofridis I, Sikandar SS, Zabala M, Qian D, Lam JS, Johnston D, Volkmer JP, Sahoo D, van de Rijn M, Dirbas FM, Somlo G, Kalisky T, Rothenberg ME, Quake SR, Clarke MF. 2014. A cell-intrinsic role for TLR2-MYD88 in intestinal and breast epithelia and oncogenesis. *Nature Cell Biology* **16**:1238–1248. DOI: <https://doi.org/10.1038/ncb3058>, PMID: 25362351
- Selkoe DJ**. 2019. Alzheimer disease and aducanumab: adjusting our approach. *Nature Reviews. Neurology* **15**:365–366. DOI: <https://doi.org/10.1038/s41582-019-0205-1>, PMID: 31138932
- Sevigny J**, Chiao P, Bussière T, Weinreb PH, Williams L, Maier M, Dunstan R, Salloway S, Chen T, Ling Y, O'Gorman J, Qian F, Arastu M, Li M, Chollate S, Brennan MS, Quintero-Monzon O, Scannevin RH, Arnold HM, Engber T, et al. 2016. The antibody aducanumab reduces Abeta plaques in Alzheimer's disease. *Nature* **537**:50–56. DOI: <https://doi.org/10.1038/nature19323>, PMID: 27582220
- Sperling RA**, Aisen PS, Beckett LA, Bennett DA, Craft S, Fagan AM, Iwatsubo T, Jack CR, Kaye J, Montine TJ, Park DC, Reiman EM, Rowe CC, Siemers E, Stern Y, Yaffe K, Carrillo MC, Thies B, Morrison-Bogorad M, Wagster MV, et al. 2011. Toward defining the preclinical stages of Alzheimer's disease: recommendations from the National Institute on Aging-Alzheimer's Association workgroups on diagnostic guidelines for Alzheimer's disease. *Alzheimer's & Dementia* **7**:280–292. DOI: <https://doi.org/10.1016/j.jalz.2011.03.003>, PMID: 21514248
- Subramanian A**, Tamayo P, Mootha VK, Mukherjee S, Ebert BL, Gillette MA, Paulovich A, Pomeroy SL, Golub TR, Lander ES, Mesirov JP. 2005. Gene set enrichment analysis: a knowledge-based approach for interpreting

- genome-wide expression profiles. *PNAS* **102**:15545–15550. DOI: <https://doi.org/10.1073/pnas.0506580102>, PMID: 16199517
- Sun L-Q**, Lee DW, Zhang Q, Xiao W, Raabe EH, Meeker A, Miao D, Huso DL, Arceci RJ. 2004. Growth retardation and premature aging phenotypes in mice with disruption of the SNF2-like gene, PASG. *Genes & Development* **18**:1035–1046. DOI: <https://doi.org/10.1101/gad.1176104>, PMID: 15105378
- Tabula Muris Consortium**, Overall coordination, Logistical coordination, Organ collection and processing, Library preparation and sequencing, Computational data analysis, Cell type annotation, Writing group, Supplemental text writing group, Principal investigators. 2018. Single-cell transcriptomics of 20 mouse organs creates a Tabula Muris. *Nature* **562**:367–372. DOI: <https://doi.org/10.1038/s41586-018-0590-4>, PMID: 30283141
- Thal DR**, Ghebremedhin E, Orantes M, Wiestler OD. 2003. Vascular pathology in Alzheimer disease: correlation of cerebral amyloid angiopathy and arteriosclerosis/lipohyalinosis with cognitive decline. *Journal of Neuro pathology and Experimental Neurology* **62**:1287–1301. DOI: <https://doi.org/10.1093/jnen/62.12.1287>, PMID: 14692704
- Willemagne VL**, Pike KE, Chételat G, Ellis KA, Mulligan RS, Bourgeat P, Ackermann U, Jones G, Szoëke C, Salvado O, Martins R, O’Keefe G, Mathis CA, Klunk WE, Ames D, Masters CL, Rowe CC. 2011. Longitudinal assessment of Aβ and cognition in aging and Alzheimer disease. *Annals of Neurology* **69**:181–192. DOI: <https://doi.org/10.1002/ana.22248>, PMID: 21280088
- Wilcock DM**, Lewis MR, Van Nostrand WE, Davis J, Previti ML, Gharkholonarehe N, Vitek MP, Colton CA. 2008. Progression of amyloid pathology to Alzheimer’s disease pathology in an amyloid precursor protein transgenic mouse model by removal of nitric oxide synthase 2. *The Journal of Neuroscience* **28**:1537–1545. DOI: <https://doi.org/10.1523/JNEUROSCI.5066-07.2008>, PMID: 18272675
- Winner B**, Kohl Z, Gage FH. 2011. Neurodegenerative disease and adult neurogenesis. *The European Journal of Neuroscience* **33**:1139–1151. DOI: <https://doi.org/10.1111/j.1460-9568.2011.07613.x>, PMID: 21395858
- Yiannopoulou KG**, Anastasiou AI, Zachariou V, Pelidou SH. 2019. Reasons for Failed Trials of Disease-Modifying Treatments for Alzheimer Disease and Their Contribution in Recent Research. *Biomedicines* **7**:E97. DOI: <https://doi.org/10.3390/biomedicines7040097>, PMID: 31835422
- Young-Pearse TL**, Bai J, Chang R, Zheng JB, LoTurco JJ, Selkoe DJ. 2007. A critical function for beta-amyloid precursor protein in neuronal migration revealed by in utero RNA interference. *The Journal of Neuroscience* **27**:14459–14469. DOI: <https://doi.org/10.1523/JNEUROSCI.4701-07.2007>, PMID: 18160654
- Yousef H**, Morgenthaler A, Schlesinger C, Bugaj L, Conboy IM, Schaffer DV. 2015. Age-Associated Increase in BMP Signaling Inhibits Hippocampal Neurogenesis. *Stem Cells (Dayton, Ohio)* **33**:1577–1588. DOI: <https://doi.org/10.1002/stem.1943>, PMID: 25538007
- Yu PB**, Deng DY, Lai CS, Hong CC, Cuny GD, Bouxsein ML, Hong DW, McManus PM, Katagiri T, Sachidanandan C, Kamiya N, Fukuda T, Mishina Y, Peterson RT, Bloch KD. 2008. BMP type I receptor inhibition reduces heterotopic [corrected] ossification. *Nature Medicine* **14**:1363–1369. DOI: <https://doi.org/10.1038/nm.1888>, PMID: 19029982
- Zencak D**, Lingbeek M, Kostic C, Tekaya M, Tanger E, Hornfeld D, Jaquet M, Munier FL, Schorderet DF, van Lohuizen M, Arsenijevic Y. 2005. Bmi1 loss produces an increase in astroglial cells and a decrease in neural stem cell population and proliferation. *The Journal of Neuroscience* **25**:5774–5783. DOI: <https://doi.org/10.1523/JNEUROSCI.3452-04.2005>, PMID: 15958744
- Zhang Y**, Chen K, Sloan SA, Bennett ML, Scholze AR, O’Keefe S, Phatnani HP, Guarnieri P, Caneda C, Ruderisch N, Deng S, Liddelow SA, Zhang C, Daneman R, Maniatis T, Barres BA, Wu JQ. 2014. An RNA-sequencing transcriptome and splicing database of glia, neurons, and vascular cells of the cerebral cortex. *The Journal of Neuroscience* **34**:11929–11947. DOI: <https://doi.org/10.1523/JNEUROSCI.1860-14.2014>, PMID: 25186741
- Zhu Y**, Tchkonina T, Pirtskhalava T, Gower AC, Ding H, Giorgadze N, Palmer AK, Ikeno Y, Hubbard GB, Lenburg M, O’Hara SP, LaRusso NF, Miller JD, Roos CM, Verzosa GC, LeBrasseur NK, Wren JD, Farr JN, Khosla S, Stout MB, et al. 2015. The Achilles’ heel of senescent cells: from transcriptome to senolytic drugs. *Aging Cell* **14**:644–658. DOI: <https://doi.org/10.1111/accel.12344>, PMID: 25754370