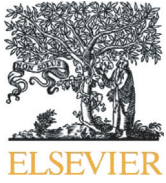




Since January 2020 Elsevier has created a COVID-19 resource centre with free information in English and Mandarin on the novel coronavirus COVID-19. The COVID-19 resource centre is hosted on Elsevier Connect, the company's public news and information website.

Elsevier hereby grants permission to make all its COVID-19-related research that is available on the COVID-19 resource centre - including this research content - immediately available in PubMed Central and other publicly funded repositories, such as the WHO COVID database with rights for unrestricted research re-use and analyses in any form or by any means with acknowledgement of the original source. These permissions are granted for free by Elsevier for as long as the COVID-19 resource centre remains active.



Frontal QRS/T angle can predict mortality in COVID-19 patients

Ramazan Gunduz, MD^{a,*}, Bekir Serhat Yildiz, MD^b, Su Ozgur, PhD^c, Mehmet Burak Ozen, MD^d, Eren Ozan Bakir, MD^b, Ibrahim Halil Ozdemir, MD^d, Nurullah Cetin, MD^b, Songul Usalp, MD^e, Soner Duman, Prof^c

^a Department of Cardiology, Manisa City Hospital, Manisa, Turkey

^b Manisa Celal Bayar University Medical Faculty, Department of Cardiology, Manisa, Turkey

^c Ege University Faculty of Medicine, Department of Biostatistics and Medical Informatics, Izmir, Turkey

^d Manisa City Hospital, Department of Cardiology, Manisa, Turkey

^e Sehit Profesör İlhan Varank Education and Research Hospital, Department of Cardiology, Turkey



ARTICLE INFO

Article history:

Received 25 October 2021

Received in revised form 19 May 2022

Accepted 21 May 2022

Keywords:

COVID-19

Electrocardiogram

Frontal QRS angle

Mortality

Mechanical ventilation

ABSTRACT

Aims: The frontal QRS-T (fQRS) angle has been investigated in the general population, including healthy people and patients with heart failure. The fQRS angle can predict mortality due to myocarditis, ischaemic and non-ischaemic cardiomyopathies, idiopathic dilated cardiomyopathy, and chronic heart failure in the general population. Moreover, no studies to date have investigated fQRS angle in coronavirus disease 2019 (COVID-19) patients. Thus, the purpose of this retrospective multicentre study was to evaluate the fQRS angle of COVID-19 patients to predict in-hospital mortality and the need for mechanical ventilation.

Methods and results: An electrocardiogram was performed for 327 COVID-19 patients during admission, and the fQRS angle was calculated. Mechanical ventilation was needed in 119 patients; of them, 110 died in the hospital. The patients were divided into two groups according to an fQRS angle $>90^\circ$ versus an fQRS angle $\leq 90^\circ$. The percentages of mortality and the need for mechanical ventilation according to fQRS angle were 67.8% and 66.1%, respectively, in the fQRS $>90^\circ$ group and 26.1% and 29.9% in the fQRS $\leq 90^\circ$ group. Heart rate, oxygen saturation, fQRS angle, estimated glomerular filtration rate, and C-reactive protein level were predictors of mortality on the multivariable analysis. The mortality risk increased 2.9-fold on the univariate analysis and 1.6-fold on the multivariate analysis for the fQRS $>90^\circ$ patient group versus the fQRS $\leq 90^\circ$ group.

Conclusion: In conclusion, a wide fQRS angle $>90^\circ$ was a predictor of in-hospital mortality and associated with the need for mechanical ventilation among COVID-19 patients.

© 2022 Elsevier Inc. All rights reserved.

1. Introduction

Coronavirus disease 2019 (COVID-19) mainly causes viral pneumonia, but it can also affect many organs, including the heart, liver, and kidneys [1]. The myocardial effects of COVID-19 include acute coronary syndromes, myocarditis, decompensated heart failure, pulmonary embolisms, and arrhythmias. These effects show a wide spectrum of electrocardiogram (ECG) abnormalities. ST-T changes can be observed in COVID-19 patients along with atrial fibrillation, sinus tachycardia, atrioventricular (AV) block, QT interval prolongation, and new bundle branch block. Atrial fibrillation, sinus tachycardia, ST-T changes, and left bundle branch block were reportedly independent risk factors for in-hospital death and ventilator use in COVID-19 patients [2–4].

QRS-T angle is another ECG parameter. There are two different methods for calculating QRS-T angle: spatial and frontal. The spatial

QRS-T angle is complex and is unlikely to be obtained via ordinary ECG devices; Rather, a software is necessary to calculate it. The frontal QRS-T (fQRS) angle is the difference between the frontal plane QRS axis (ventricular depolarisation) and the T axis (ventricular repolarisation). The fQRS-T angle shows cardiac depolarisation–repolarisation heterogeneity. Automatic reports of many 12-lead ECG devices can be obtained and are readily interpretable [2].

In the previous studies, the fQRS angle was investigated in the general population, including healthy people and patients with heart failure. Although COVID-19 is a disease with high mortality, its predictive markers of mortality are very few. The fQRS angle can predict mortality due to myocarditis, ischaemic and non-ischaemic cardiomyopathies, idiopathic dilated cardiomyopathy, and chronic heart failure in the general population [3–8]. However, its usefulness in COVID-19 patients has not yet been reported. This retrospective multicentre study aimed to evaluate the fQRS angle as a parameter for survival and indication for the need for mechanical ventilation (MV) among hospitalised COVID-19 patients.

* Corresponding author.

E-mail address: ramazankard@yahoo.com (R. Gunduz).

2. Methods

The study was conducted at the Merkezefendi State Hospital and the Faculty of Medicine at Celal Bayar University. The patients enrolled in this retrospective study were diagnosed with COVID-19 and were confirmed by RNA detection using reverse transcription polymerase chain reaction (RT-PCR). The study was conducted between July 2020 and December 2020 at two different hospitals.

This retrospective study was approved by the ethical committee of the Faculty of Medicine at Celal Bayar University as well as the Turkish Ministry of Health (no. 2020–06–05T11_26_30).

A 10-s 12-lead ECG (MAC 2000, GE Medical Systems Information Technologies, Inc., MI, USA) was performed at admission with the patient in the supine position with a paper speed of 25 mm/s and a voltage of 10 mm/s.

Heart rate and rhythm, fQRS angle, QT interval, corrected QT (QTc), and QRS duration were recorded on admission. The fQRS angle was defined as the difference between the QRS complex and the T wave. The fQRS angle, QRS complex, and T wave were obtained via ECG devices as automatic reports. When the angle exceeded 180°, the frontal QRS-T angle was calculated as 360° minus the absolute value of the difference between the frontal plane QRS axis and the T axis [2]. Additionally, QRS duration, QT, and QTc data were evaluated blindly by two cardiologists using software after $\times 400$ magnification.

QT was measured from the beginning of the QRS complex to the end of the T wave. QTc was calculated using the Bazett formula ($QTc = QT/\sqrt{R-R}$) [9]. We split the patients into two groups according to the fQRS angle ($>90^\circ$ versus $\leq 90^\circ$). The fQRS $>90^\circ$ group was labelled as wide and fQRS $\leq 90^\circ$ group as narrow, as an fQRS $>90^\circ$ was reportedly a significant predictor of mortality in many studies, including the DEFINITE trial [10,11].

The demographic characteristics of all patients reported with the values of weight, height, body mass index, standard blood testing including D-dimer, troponin I (cTnI), C-reactive protein (CRP), estimated glomerular filtration rate (eGFR), lymphocyte count, neutrophil count, and lymphocyte-to-neutrophil ratio as well as computed tomography, oxygen saturation (SO₂), at the time of admission. In addition, all patients' symptoms (fever, cough, malaise, cough, dyspnoea, headache, sore throat) and clinical features including hypertension, congestive heart failure, diabetes mellitus, and chronic obstructive pulmonary disease were recorded using patients' anamnesis or historical electronic medical records. The medications that were taken prior to admission, including anti-arrhythmic drugs and those administered in the hospital, were recorded.

We excluded patients who had ECG findings of Wolf-Parkinson-White syndrome, pacemaker rhythm, complete left or right bundle branch block (QRS ≥ 120 ms), or ventricular tachycardia.

2.1. Follow-up

Patients were followed up from hospital admission to discharge or in-hospital death. The primary endpoints for follow-up were in-hospital mortality and MV support requirement.

2.2. Statistical analysis

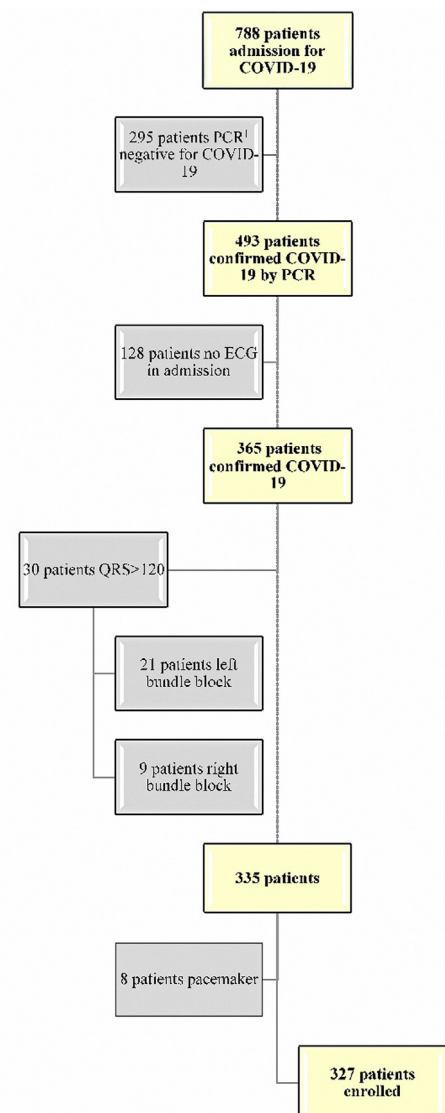
Statistical analysis of this retrospective study was performed using SPSS Statistics for Windows version 25.0 (IBM, Armonk, NY, USA; and R Studio). The assumption of normality for continuous variables was tested using the Kolmogorov-Smirnov/Shapiro-Wilk test. Normally distributed continuous variables are presented as mean and standard deviation, while non-normally distributed variables are presented as median, minimum, and maximum values. The chi-square statistic was used to test relationships between categorical variables. Independent samples *t*-test or Mann Whitney *U* test was used to compare the means of two mutually exclusive groups of people. Receiver operating

characteristic curve analysis was used to determine the optimal cut-off value (optimal decision threshold) of the fQRS angle. The relationship between independent variables and time to event was compared using Kaplan-Meier survival analysis and the log rank test. The multivariable analysis was performed using Cox regression (Backward-LR method) modelling to determine the risk factors for in-hospital mortality and the need for MV support. Hazard ratios and their confidence intervals are reported for the univariate and multivariate models. A two-sided *p*-value ≤ 0.05 , was considered statistically significant.

3. Results

We screened 788 hospitalised patients; of them, 493 had confirmed COVID-19 by RT-PCR analysis. We excluded 166 patients due to the lack of ECG information and for having a QRS >120 ms (left bundle block or right bundle block) and pacemaker rhythm (Fig. 1). The number of patients enrolled was 327; of them, 119 needed MV support, among whom 110 died in the hospital.

The mean fQRS angle was $27.5^\circ \pm 20.5^\circ$ in the fQRS $\leq 90^\circ$ group and $122.0^\circ \pm 22.8^\circ$ in the fQRS $>90^\circ$ group (Fig. 2). The baseline



¹Polymerase chain reaction (PCR)

Fig. 1. Flow diagram of the study profile.

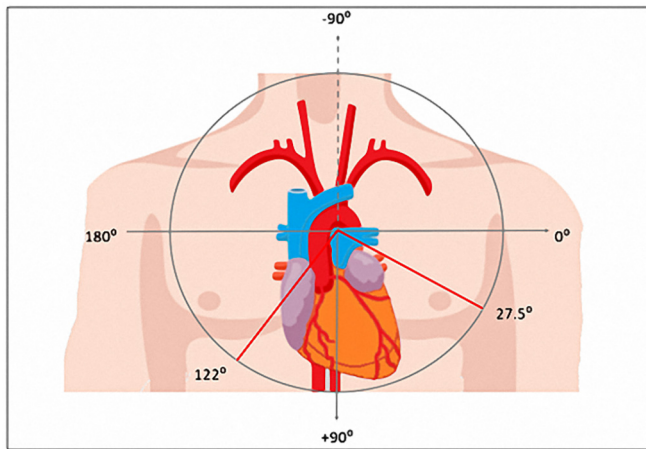


Fig. 2. The median fQRS angle was in fQRS $\leq 90^\circ$ group and in fQRS $> 90^\circ$ group.

demographics, clinical, electrocardiographic, and laboratory characteristics of all patients and by fQRS angle are summarised in Table 1. A total of 268 patients (81.9%) had an fQRS $\leq 90^\circ$, while 59 patients (18.9%) had an fQRS $> 90^\circ$. Patients with an fQRS $> 90^\circ$ were older and had a faster heart rate, lower SO_2 and eGFR, and higher cTnI, CRP, and D-dimer levels. The primary follow-up endpoints were in-hospital mortality and the need for MV support, which affected 40 of 110 patients (36.3%) and 39 of 119 patients (32.8%), respectively, in the fQRS $> 90^\circ$ group and 70 of 110 patients (63.7%) and 80 of 119 patients (67.2%) in the fQRS $\leq 90^\circ$ group. Variables that were significant in univariate analysis were used in the Cox regression model (Table 1).

The rates of mortality and need for MV support according to fQRS angle were 67.8% and 66.1%, respectively, in the fQRS $> 90^\circ$ group versus 26.1% and 29.9% in the fQRS $\leq 90^\circ$ group (Fig. 3). In-hospital mortality rate of the fQRS $> 90^\circ$ group was higher than that of the fQRS $\leq 90^\circ$ group. Comparisons were made with Kaplan-Meier survival analysis according to fQRS angle (Fig. 4). Patients who had higher fQRS angles tended to be non-survivors, need MV support, have higher cTnI levels, and have higher CRP values (Fig. 5).

Univariate logistic regression analysis indicated that age, heart rate, SO_2 , fQRS, eGFR, cTnI, CRP, and D-dimer levels were significantly associated with in-hospital mortality. Subsequently, multivariate logistic regression analysis identified that heart rate, SO_2 , fQRS, eGFR, and CRP were predictors of mortality. Mortality risk was increased 2.9-fold on the univariate analysis and 1.6-fold on the multivariate analysis for the fQRS $> 90^\circ$ patient group versus the fQRS $\leq 90^\circ$ group (Table 2).

4. Discussion

The fQRS angle is an observer-independent ECG parameter with a range of $45\text{--}60^\circ$ under normal conditions [12]. The cut-off values for fQRS angles were identified from different clinical studies in the literature.

Non-ischaemic cardiomyopathy, myocarditis, acute coronary syndrome, and acute decompensated heart failure were predictive of mortality for $> 90^\circ$, $> 100^\circ$, $> 104^\circ$, and $> 114^\circ$ values in the literature [3,5,11,13,14]. We evaluated all of these angle values, including the normal range ($45\text{--}60^\circ$) to predict mortality and need for MV support in COVID-19 patients. The best predictive value of the fQRS angle in our study was $> 90^\circ$.

An fQRS $> 90^\circ$ was a significant predictor of death, appropriate implantable cardioverter-defibrillator shock, or resuscitated cardiac arrest in non-ischaemic cardiomyopathy patients in the DEFINITE trial [11]. In another study, May et al. [10] showed that fQRS $> 90^\circ$ was a strong independent predictor of all-cause mortality and myocardial infarction in a

diabetic population. Hence, here we categorised patients into fQRS $> 90^\circ$ and fQRS $\leq 90^\circ$ groups.

The mean fQRS angle in the fQRS $> 90^\circ$ and fQRS $\leq 90^\circ$ groups was $122^\circ \pm 22.8^\circ$ and $27.5^\circ \pm 20.5^\circ$, respectively. Many clinical conditions, including ischaemic conditions, heart failure, diabetes mellitus, hypertension, myocarditis, chronic renal failure, and older age, may lead to changes in ventricular depolarisation and repolarisation axes. A wider fQRS angle was observed in these clinical conditions more frequently [2,12,15]. We found that the fQRS $> 90^\circ$ group had older patients with a higher incidence of hypertension, diabetes mellitus, lower eGFR, and higher cTnI.

The mortality rate and need for MV were 63.7% and 77.3% in the fQRS $> 90^\circ$ group and 26.1% and 29.9% in the fQRS $\leq 90^\circ$ group. Depending on the direction of the ventricular depolarisation and repolarisation axes, a narrow angle has been determined in healthy individuals. Furthermore, a wider angle was associated with higher mortality in heart failure, diabetes mellitus, myocardial ischaemia, and myocarditis [3,10,11]. Wider angles were also associated with higher mortality in COVID-19 patients in our study.

Higher abnormal cTnI, higher CRP, and lower SO_2 were observed in the fQRS $> 90^\circ$ group. Inflammation, hypoxia, and ischaemia can damage the myocardium in patients with COVID-19, and this damage can be measured by troponin elevation. Myocardial damage causes inhomogeneous areas in the myocardium. Normally, ventricular depolarisation and repolarisation axes occur in a similar direction in the myocardium, which can cause a sharp QRs axis. Myocardial damage causes depolarisation and repolarisation abnormalities, forming inhomogeneous areas in the myocardium. These areas can lead to a widening fQRS angle.

Myocardial damage in the presence or absence of pre-existing cardiovascular disease is associated with a greater need for MV support and higher mortality rates among COVID-19 patients [3,16]. Hence, here we found a relationship among higher fQRS angle, mortality rate, need for MV support, and higher troponin and CRP values. In addition, the mortality risk among patients with fQRS $> 90^\circ$ was 2.6-fold higher on the univariate analysis and 1.6-fold higher on the multivariate analysis.

Moreover, we found that abnormal cTnI, CRP, and D-dimer levels at the time of admission and age were associated with mortality among COVID-19 patients. The independent predictors for in-hospital mortality among COVID-19 patients were an $SO_2 < 90\%$, abnormal CRP and eGFR, heart rate > 100 bpm, and fQRS $> 90^\circ$ on ECG upon admission. Elias et al. [17] explored ECG parameters as prognostic factors for COVID-19 patients in whom an ECG was taken during emergency service. Abnormal respiratory vital signs including an $SO_2 \leq 95\%$, atrial fibrillation or flutter, right ventricular hypertrophy or SIQIIIITIII, and any ST elevation or depression in two contiguous leads in emergency service ECG were prognostic factors for in-hospital mortality. Wang et al. [18] found that atrial fibrillation and sinus tachycardia were independent predictors of in-hospital mortality and MV need among patients with COVID-19. We found that an $SO_2 < 90\%$, heart rate > 100 , and fQRS $> 90^\circ$ were prognostic markers of mortality. However, in our study, atrial fibrillation was not a predictor of in-hospital mortality among COVID-19 patients [17,18].

The fQRS angle changes with age, and comorbidities, including diabetes mellitus, hypertension, sex, CRP, pre-existing and concurrent cardiovascular diseases, and myocardial injury (measured by elevated troponin increase), are associated with in-hospital mortality and disease severity among COVID-19 patients [1]. Therefore, a wider fQRS angle is a result of acute myocardial injury and clinical comorbidities. According to these results, fQRS angle widening might be a prognostic marker for in-hospital mortality and the need for MV support. ECG abnormalities in COVID-19 patients include ST-T changes, QT prolongation, conduction disturbances, and ventricular arrhythmia. Conduction disturbances including high-degree AV block, new-onset complete AV block, bradyarrhythmia, new-onset complete bundle branch block,

Table 1
The baseline demographics, clinical, electrocardiographic and laboratory characteristics all patients and as well as according to fQRS.

	ALL patients	fQRS ≤90°	fQRS >90°	P value
Age	61.0 [18.0–95.0]	57 [18–95]	70 [38–94]	<0.001
Sex ^a male	195 (59.6)	162 (60.4)	33 (55.9)	0.522
Sex ^a female	132 (40.4)	106 (39.6)	26 (44.1)	
BMI (kg/m ²) ^a	25.7 [18.4–48.2]	25.63 [19.53–48.24]	26.03 [18.37–40]	0.960
Symptoms in admission				
Symptoms in admission ^b dispne	168 (33.0)	126 (30.1)	42 (46.7)	
Symptoms in admission ^b fever	102 (20.0)	91 (21.7)	11 (12.2)	–
Symptoms in admission ^b weakness	59 (11.6)	53 (12.6)	6 (6.7)	
Comorbidities				
Hypertension	139 (42.5)	102 (38.1)	37 (62.7)	0.001
Diabetes mellitus	88 (26.9)	62 (23.1)	26 (44.1)	0.001
Coronary artery disease	44 (13.5)	31 (11.6)	13 (22.0)	0.033
Heart failure	16 (4.9)	8 (3.0)	8 (13.6)	0.003
COPD ^b	44 (13.5)	32 (11.9)	12 (20.3)	0.087
Hyperlipidaemia	26 (8.0)	18 (6.7)	8 (13.6)	0.106
Vital Signs				
Heart rate (b.p.m)	87.0 [44.0–188.0]	84 [44–160]	100 [55–188]	<0.001
Heart rate >100	83 (25.4)	55 (20.5)	28 (47.5)	<0.001
SO ₂ ^c	95.0 [52.0–100.0]	95 [60–100]	89 [52–98]	<0.001
SO ₂ (≥90)	236 (72.2)	209 (78.0)	27 (45.8)	<0.001
SO ₂ (<90)	91 (27.8)	59 (22.0)	32 (54.2)	
CT ^d Normal	50 (15.3)	48 (17.9)	3 (5.1)	
CT (Ground glass or viral pneumonia)	253 (77.6)	203 (75.7)	50 (84.7)	0.037
CT Atypic	23 (7.1)	17 (6.3)	6 (10.2)	
ECG				
Rhythm				
Atrial fibrillation/ Sinus	26 (8.0) / 301 (92)	14 (5.2) / 254 (94.8)	12 (20.3) / 47 (79.7)	<0.001
PR Duration	140 [80.0–300.0]	140 [80–254]	140 [90–300]	0.565
P wave	96.0 [40.0–148.0]	94 [44–146]	100 [40–148]	0.013
QRS duration (ms)	84.0 [58.0–128.0]	82 [58–128]	92 [58–118]	<0.001
QT interval (ms)	370.0 [210.0–614.0]	372 [258–614]	342 [210–480]	0.004
QTc (ms)	436.0 [293–678]	433.5 [347–678]	451 [293–540]	0.031
fQRS axis (°)	23.0 [–86.0–184.0]	23 [0–90]	119 [93–180]	<0.001
T axis (°)	35.0 [–103.0–270.0]	34 [–103–265]	70 [–91–270]	0.120
Laboratory Tests				
Fasting Glucose	115 [50–882]	110 [50–882]	140 [72–356]	<0.001
AST ^e	30 [10–1464]	28 [10–1464]	40 [14–281]	<0.001
ALT ^f	25.9 [2.0–437]	25 [2.0–437]	23 [5–165]	0.897
Lymphocyte count uL	0.56 [0.03–3.35]	0.53 [0.03–3.35]	0.74 [0.17–2.83]	0.001
Neutrophil count uL	5.61 [1.23–30.07]	5.10 [1.23–30.07]	8.25 [1.72–26.44]	<0.001
Lymphocyte/neutrophil ratio	0.10 [0.0–1.88]	0.106 [0.00–1.88]	0.083 [0.01–0.99]	0.108
Hemoglobin (g/dL)	12.53 ± 2.05	12.67 ± 2.01	11.89 ± 2.14	0.008
Creatine	0.88 [0.15–12]	0.85 [0.33–12]	1.2 [0.15–9.24]	<0.001
eGFR (mL/min/m ²) ^g	90 [3.0–158]	94 [3.0–142]	56 [4–158]	<0.001
eGFR (mL/min/m ²) _{(≥90)-normal}	164 (50.2)	148 (55.2)	16 (27.1)	
eGFR (mL/min/m ²) _(<90)	163 (49.8)	120 (44.8)	43 (72.9)	<0.001
cTnI ^h (ng/mL)	0.0 [0.0–25]	0.002 [0.00–25]	0.01 [0.002–10]	<0.001
cTnI (ng/mL) _{(≤0.02)normal}	282 (86.2)	251 (93.7)	31 (52.5)	<0.001
cTnI (ng/mL) _(>0.02)	45 (13.8)	17 (6.3)	28 (47.5)	
CRP (mg/L) ⁱ	46.1 [0.50–622]	25.60 [0.50–622]	123.4 [6–546]	<0.001
CRP (mg/L) _{(0–10)normal}	107 (32.9)	106 (39.7)	1 (1.7)	<0.001
CRP (mg/L) _(>10)	218 (67.1)	161 (60.3)	57 (98.3)	
D-dimer ng/mL	211 [1.48–3828]	192 [10–3828]	600 [1.48–3597]	0.001
D-dimer ng/mL _{(0–250)normal}	188 (57.5)	165 (61.6)	23 (39.0)	0.001
D-dimer ng/mL _(>250)	139 (42.5)	103 (38.4)	36 (61.0)	
Medications				
Enoxaparin	259 (79.4)	202 (75.7)	57 (96.6)	<0.001
Hydroxychloroquine	219 (67.0)	187 (69.8)	32 (54.2)	0.022
Azithromycin	125 (38.2)	110 (41.0)	15 (25.4)	0.025
Favipiravir	208 (63.6)	156 (58.2)	52 (88.1)	<0.001
Oseltamivir	45 (13.8)	40 (14.9)	5 (8.5)	0.193
Tocilizumab	24 (7.3)	18 (6.7)	6 (10.2)	0.406

(continued on next page)

Table 1 (continued)

	ALL patients	fQRS $\leq 90^\circ$	fQRS $> 90^\circ$	P value
Primary Endpoint				
MV ^j support	119 (36.4)	80 (29.9)	39 (66.1)	<0.001*
Death	110 (33.6)	70 (26.1)	40 (67.8)	<0.001*

- ^a Body Mass Index (BMI).
- ^b Chronic Obstructive Pulmonary Disease (COPD).
- ^c Oxygen saturation (SO₂).
- ^d Computed tomography normal (CT).
- ^e Aspartat aminotransferase (AST).
- ^f Alanin aminotransferase (ALT).
- ^g Estimated Glomerular Filtration Rate (eGFR).
- ^h Troponin I (cTnI).
- ⁱ C Reactive Protein(CRP).
- ^j Mechanical Ventilation(MV).

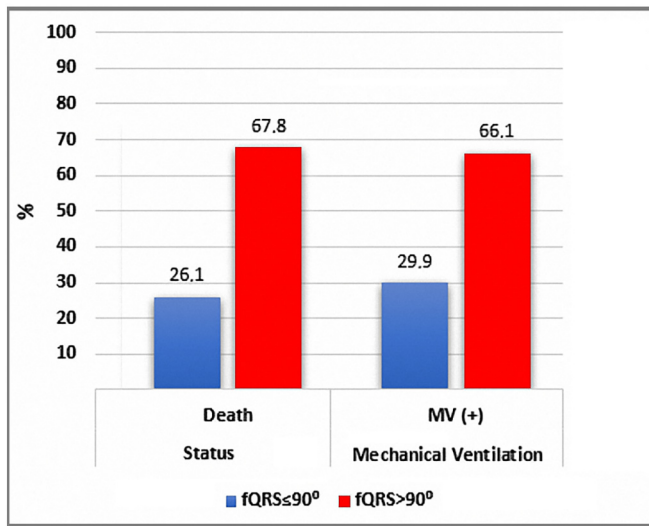


Fig. 3. Mortality and requirement for MV percentage according to fQRS.

atrial fibrillation, and Torsade de Pointes due to QT prolongation can result from COVID-19 medications or illness. Atrial fibrillation, ST segment and T wave changes, sinus tachycardia, QRS duration > 110 , and left bundle branch block were associated with mortality in previous studies [17-19]. However, fQRS has not yet been investigated in COVID-19 patients. To our knowledge, this is the first study to evaluate the risk for

in-hospital mortality and need for MV support among patients with COVID-19 based on fQRS angle. We found that ECG parameters such as heart rate > 100 /min and fQRS $> 90^\circ$ on hospital admission were additional prognostic factors in COVID-19 patients. When COVID-19 patients are admitted to the hospital, their ECG values should be recorded and fQRS angle calculated. Patients with an fQRS angle $> 90^\circ$ were at higher risk for mortality and need for MV support versus those in the fQRS $\leq 90^\circ$ group.

Since fQRS can be calculated very easily from ECG, it can be easily applied in emergency services. If the fQRS angle is standardized as a result of more comprehensive studies, it can guide the hospitalization of high-risk patients and discharge of low-risk patients. It can be used in patient triage in the emergency department during a pandemic.

5. Conclusion

In conclusion, SO₂ $< 90\%$, heart rate > 100 /min, and fQRS $> 90^\circ$ are prognostic markers of mortality. On the other hand, a wide fQRS angle ($> 90^\circ$) was an independent predictor of in-hospital mortality and associated with need for MV support in COVID-19 patients.

5.1. Limitations

There are some limitations to our study. First, it was retrospective in nature, and data including ECG parameters were based on electronic medical record retrieval. Second, the cardiac functions of every patient were not evaluated using echocardiography. Hence, we could not show the relationship between the fQRS angle and echocardiography parameters. Third, the dataset that we analysed included only

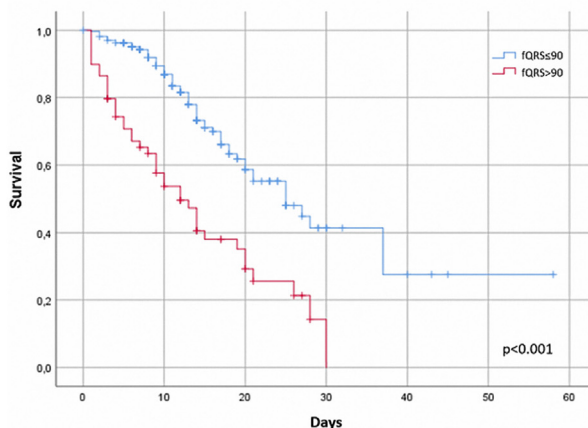


Fig. 4. Kaplan-Meier survival analysis according to baseline fQRS angle.

Angle	Median for Survival Time		
	Estimate	95% Confidence Interval	
		Lower Bound	Upper Bound
fQRS $\leq 90^\circ$	25.0	18.3	31.7
fQRS $> 90^\circ$	12.0	8.1	15.9
Overall	21.0	17.1	24.9

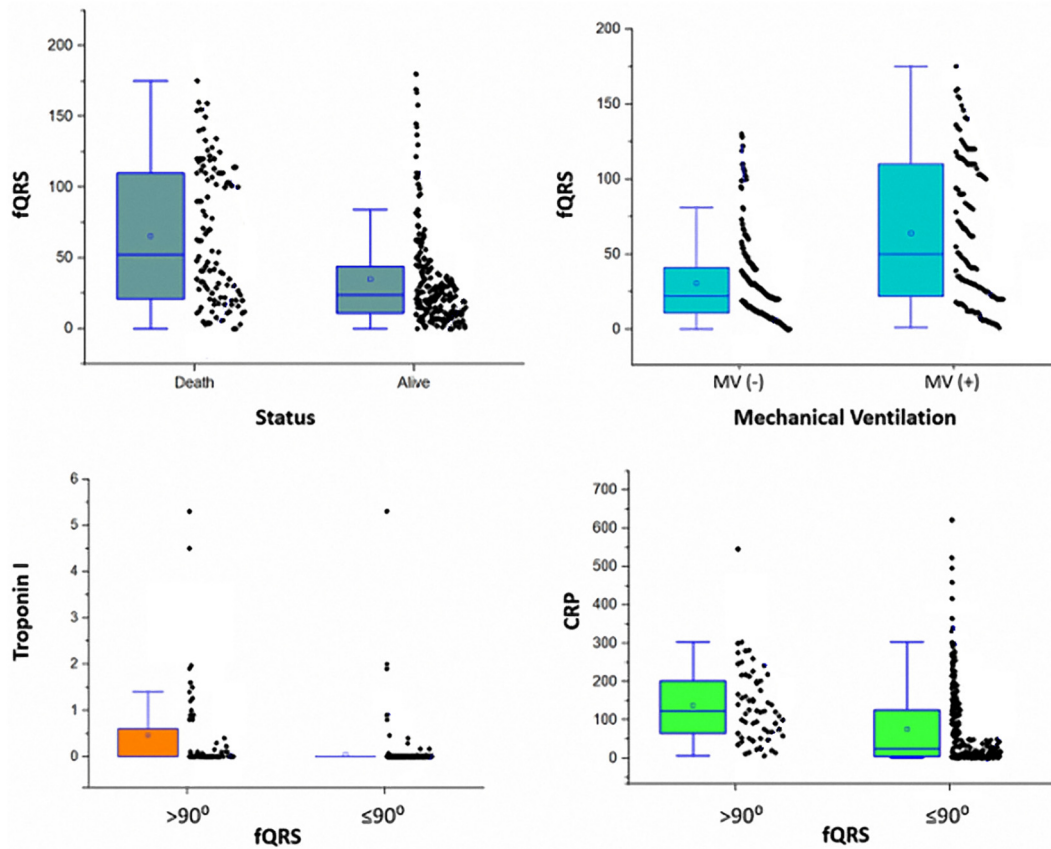


Fig. 5. The relationship fQRS angle and in-hospital mortality, need MV, cTnI, CRP.

Table 2
Univariable and multivariable predictors of in-hospital mortality.

	Univariate model			Multiple model				
	p-value	Hazard ratio (HR)	95% CI for HR		p-value	Hazard ratio (HR)	95% CI for HR	
			Lower	Upper			Lower	Upper
Age	<0.001	1.033	1.019	1.046				
Heart rate (b.p.m)	<0.001	3.072	2.102	4.488	0.003	1.802	1.214	2.675
SO ₂	<0.001	3.858	2.597	5.731	0.001	2.001	1.321	3.033
fQRS angle (°) 90	<0.001	2.917	1.970	4.319	0.017	1.643	1.092	2.471
eGFR(mL/min/m ²)	<0.001	2.839	1.826	4.415	0.032	1.649	1.044	2.604
cTnI (ng/mL)	<0.001	2.400	1.587	3.627				
CRP (mg/L)	<0.001	13.498	4.276	42.607	0.002	6.188	1.901	20.144
D- dimer	<0.001	2.215	1.493	3.287				

Age: Continuous variable, Heart rate ≤100: reference, SO ≥90: reference, fQRS angle ≤90°: reference, eGFR ≥90: reference, cTnI_{(0,02)normal}: reference, CRP_{(0-10) normal}: reference, D-dimer_{(0-250) normal}: reference.

hospitalised COVID-19 patients. Furthermore, we evaluated these patients for in-hospital mortality, not long-term mortality. And finally, myocardial injury was measured by cTnI in our hospital because we did not have the ability to measure high-sensitivity troponin.

Credit authorship contribution statement

Ramazan Gunduz: Writing – review & editing, Writing – original draft, Methodology, Investigation, Formal analysis, Data curation. **Bekir Serhat Yildiz:** Formal analysis, Data curation, Conceptualization. **Su Ozgur:** Data curation, Conceptualization. **Mehmet Burak Ozen:** Project administration, Methodology, Investigation, Conceptualization. **Eren Ozan Bakir:** Investigation, Data curation. **Ibrahim Halil Ozdemir:** Investigation, Data curation, Conceptualization. **Nurullah Cetin:**

Writing – review & editing, Methodology, Conceptualization. **Songul Usalp:** Funding acquisition, Conceptualization. **Soner Duman:** Supervision, Methodology, Conceptualization.

Declaration of Competing Interest

The authors declare that they have no known competing financial interests or personal relationships that could have appeared to influence the work reported in this paper.

Acknowledgments

We are sincerely grateful our medical secretaries Bahriye Tay and Gulizar Erel for support.

References

- [1] Zhou F, Yu T, Du R, Fan G, Liu Y, Liu Z, et al. Clinical course and risk factors for mortality of adult inpatients with COVID-19 in Wuhan, China: a retrospective cohort study. *Lancet*. 2020;395(10229):1054–62. [https://doi.org/10.1016/S0140-6736\(20\)30566-3](https://doi.org/10.1016/S0140-6736(20)30566-3).
- [2] Oehler A, Feldman T, Henrikson CA, Tereshchenko LG. QRS-T angle: a review. *Ann Noninvasive Electrocardiol*. 2014;19(6):534–42. <https://doi.org/10.1111/anec.12206>.
- [3] Chen S, Hoss S, Zeniou V, Shauer A, Admon D, Zwas DR, et al. Electrocardiographic predictors of morbidity and mortality in patients with acute myocarditis: the importance of QRS-T angle. *J Card Fail*. 2018;24(1):3–8. <https://doi.org/10.1016/j.cardfail.2017.11.001>.
- [4] Zhang Z-m, Prineas RJ, Case D, Soliman EZ, Rautaharju PM. Comparison of the prognostic significance of the electrocardiographic QRS/T angles in predicting incident coronary heart disease and total mortality (from the atherosclerosis risk in communities study). *Am J Cardiol*. 2007;100(5):844–9. <https://doi.org/10.1016/j.amjcard.2007.03.104>.
- [5] Borleffs CJW, Scherptong RW, Man S-C, van Welsenes GH, Bax JJ, van Erven L, et al. Predicting ventricular arrhythmias in patients with ischemic heart disease: clinical application of the ECG-derived QRS-T angle. *Circ Arrhythm Electrophysiol*. 2009;2(5):548–54. <https://doi.org/10.1161/CIRCEP.109.859108>.
- [6] Pavri BB, Hillis MB, Subacius H, Brumberg GE, Schaechter A, Levine JH, et al. Prognostic value and temporal behavior of the planar QRS-T angle in patients with nonischemic cardiomyopathy. *Circulation*. 2008;117(25):3181–6. <https://doi.org/10.1161/CIRCULATIONAHA.107.733451>.
- [7] Li S-N, Zhang X-L, Cai G-L, Lin R-W, Jiang H, Chen J-Z, et al. Prognostic significance of frontal QRS-T angle in patients with idiopathic dilated cardiomyopathy. *Chin Med J (Engl)*. 2016;129(16):1904. <https://doi.org/10.4103/0366-6999.187844>.
- [8] Gotsman I, Keren A, Hellman Y, Banker J, Lotan C, Zwas DR. Usefulness of electrocardiographic frontal QRS-T angle to predict increased morbidity and mortality in patients with chronic heart failure. *Am J Cardiol*. 2013;111(10):1452–9. <https://doi.org/10.1016/j.amjcard.2013.01.294>.
- [9] Moss AJ. Measurement of the QT interval and the risk associated with QTc interval prolongation: a review. *Am J Cardiol*. 1993;72(6):B23–5. [https://doi.org/10.1016/0002-9149\(93\)90036-c](https://doi.org/10.1016/0002-9149(93)90036-c).
- [10] May O, Graversen CB, Johansen MØ, Arildsen HJ. Complications I. Association of frontal QRS-T angle–age risk score on admission electrocardiogram with mortality in patients admitted with an acute coronary syndrome. *J Diabetes Complications*. 2017;31(3):551–5. <https://doi.org/10.1016/j.amjcard.2011.09.014>.
- [11] Pavri BB, Hillis MB, Subacius H, Brumberg GE, Schaechter A, Levine JH, et al. Prognostic value and temporal behavior of the planar QRS-T angle in patients with nonischemic cardiomyopathy. *Circulation*. 2008;117(25):3181–6. <https://doi.org/10.1161/CIRCULATIONAHA.107.733451>.
- [12] Ziegler R, Bloomfield DK. A study of the normal QRS-T angle in the frontal plane. *J Electrocardiol*. 1970;3(2):161–7. [https://doi.org/10.1016/s0022-0736\(70\)80009-7](https://doi.org/10.1016/s0022-0736(70)80009-7).
- [13] Sweda R, Sabti Z, Strebel I, Kozuharov N, Wussler D, Shrestha S, et al. Diagnostic and prognostic values of the QRS-T angle in patients with suspected acute decompensated heart failure. *ESC Heart Failure*. 2020. <https://doi.org/10.1002/ehf2.12746>.
- [14] Lown MT, Munyombwe T, Harrison W, West RM, Hall CA, Morrell C, et al. Association of frontal QRS-T angle–age risk score on admission electrocardiogram with mortality in patients admitted with an acute coronary syndrome. *Am J Cardiol*. 2012;109(3):307–13. <https://doi.org/10.1016/j.amjcard.2011.09.014>.
- [15] Gungor M, Celik M, Yalcinkaya E, Polat AT, Yuksel UC, Yildirim E, et al. The value of frontal planar QRS-T angle in patients without angiographically apparent atherosclerosis. *Med Princ Pract*. 2017;26(2):125–31. <https://doi.org/10.1159/000453267>.
- [16] Mitrani RD, Dabas N, Goldberger J. COVID-19 cardiac injury: implications for long-term surveillance and outcomes in survivors. *J Heart Rhythm*. 2020;17(11):1984–90. <https://doi.org/10.1016/j.hrthm.2020.06.026>.
- [17] Elias P, Poterucha TJ, Jain SS, Sayer G, Raikhelkar J, Fried J, et al. The prognostic value of electrocardiogram at presentation to emergency Department in Patients with COVID-19. *Mayo Clin Proc*. 2020;95(10):2099–109. <https://doi.org/10.1016/j.mayocp.2020.07.028>.
- [18] Wang Y, Chen L, Wang J, He X, Huang F, Chen J, et al. Electrocardiogram analysis of patients with different types of COVID-19. *Ann Noninvasive Electrocardiol*. 2020;e12806. <https://doi.org/10.1111/anec.12806>.
- [19] Lanza GA, De Vita A, Ravenna SE, D'Aiello A, Covino M, Franceschi F, et al. Electrocardiographic findings at presentation and clinical outcome in patients with SARS-CoV-2 infection. *Europace*. 2021;23(1):123–9. <https://doi.org/10.1093/europace/eaab245>.