

## Emergency department and ‘Google flu trends’ data as syndromic surveillance indicators for seasonal influenza

L. H. THOMPSON<sup>1</sup>, M. T. MALIK<sup>1,2,3</sup>, A. GUMEL<sup>2</sup>, T. STROME<sup>4,5</sup> AND  
S. M. MAHMUD<sup>1,5\*</sup>

<sup>1</sup> Department of Community Health Sciences, University of Manitoba, Winnipeg, MB, Canada

<sup>2</sup> Department of Mathematics, University of Manitoba, Winnipeg, MB, Canada

<sup>3</sup> Department of Applied Mathematics and Sciences, Khalifa University of Science, Technology and Research, Abu Dhabi, UAE

<sup>4</sup> Department of Emergency Medicine, University of Manitoba, Winnipeg, MB, Canada

<sup>5</sup> Winnipeg Regional Health Authority, Winnipeg, MB, Canada

Received 15 April 2013; Final revision 23 September 2013; Accepted 12 December 2013;  
first published online 20 January 2014

### SUMMARY

We evaluated syndromic indicators of influenza disease activity developed using emergency department (ED) data – total ED visits attributed to influenza-like illness (ILI) (‘ED ILI volume’) and percentage of visits attributed to ILI (‘ED ILI percent’) – and Google flu trends (GFT) data (ILI cases/100 000 physician visits). Congruity and correlation among these indicators and between these indicators and weekly count of laboratory-confirmed influenza in Manitoba was assessed graphically using linear regression models. Both ED and GFT data performed well as syndromic indicators of influenza activity, and were highly correlated with each other in real time. The strongest correlations between virological data and ED ILI volume and ED ILI percent, respectively, were 0·77 and 0·71. The strongest correlation of GFT was 0·74. Seasonal influenza activity may be effectively monitored using ED and GFT data.

**Key words:** Emergency departments, epidemiology, seasonal influenza, surveillance, Google flu trends.

### INTRODUCTION

Although influenza is a major cause of morbidity and mortality, most incident influenza cases are not detected by routine (laboratory-based or virological) disease surveillance as flu patients are rarely tested for influenza [1]. Surveillance systems based on laboratory testing are often expensive to implement and maintain compared to alternatives, may not be

sensitive enough to detect the early stages of an outbreak, and may not be suitable to detect outbreaks of novel influenza strains in a timely manner [2, 3]. Syndromic surveillance is an alternative approach which involves the use of ‘health-related data that precede diagnosis and signals sufficient probability of a case or an outbreak to warrant further public health response’ [4]. Examples of influenza syndromic indicators include the use of pre-diagnostic information, such as the volume of patients presenting with influenza-like illness (ILI) to emergency departments (EDs) or primary-care sites, and tracking health information-seeking behaviour such as phone calls to health lines [5–7], or internet searches for flu-related

\* Address for correspondence: Dr S. M. Mahmud, MD, PhD, FRCPC, Department of Community Health Sciences, University of Manitoba, S111 – 750, Bannatyne Avenue, Winnipeg, Manitoba, Canada R3E 0W3.  
(Email: salah.mahmud@gmail.com)

information (e.g. the Google flu trends (GFT) website, which provides near real-time estimates of influenza activity in more than 20 countries [8]). Several studies have investigated the performance of GFT data in monitoring influenza activity. GFT ILI rate estimates have been shown to closely correlate with influenza disease activity during the recent H1N1 influenza pandemic [9, 10], and to anticipate pandemic H1N1 influenza activity in Manitoba (Canada), up to 2 weeks in advance [11].

Malik *et al.* also found that the volume and percentage of ED visits triaged as ILI were strongly correlated with GFT-based syndromic indicators and with influenza activity during the 2009 H1N1 pandemic [11]. EDs are common points of entry into the healthcare system for people with ILI [12], so it is reasonable to expect that a syndromic surveillance system based on ED ILI case volumes might function equally well during non-pandemic influenza seasons. The recently implemented Emergency Department Information System (EDIS) – a real-time monitoring system tracking triage information for all patient visits to a hospital ED in the city of Winnipeg, Canada – provides an opportunity to assess this hypothesis. We constructed several influenza syndromic indicators using ED and GFT data, and used a time-series analysis to evaluate their utility for the timely monitoring of seasonal influenza activity measured as the weekly count of laboratory-confirmed influenza A and B cases.

## METHODS

### ED data

Information on ED visits to Winnipeg hospitals during the 2008–2009, 2009–2010 and 2010–2011 flu seasons was obtained from the EDIS database. EDIS was implemented in 2008, and therefore the data was only available for these three seasons. EDIS is a real-time ED monitoring system implemented across Winnipeg hospitals that records patient demographics, ‘chief complaints’, and other triage information for every ED visit. We obtained aggregated daily data capturing the total number of visits to the EDs (for any reason) and the number of visits attributed to ‘ILI’, defined as having any of the following chief complaints: weakness, shortness of breath, cough, headache, fever, sore throat, upper respiratory tract infection, or respiratory arrest. As these complaints are not specific to the ILI syndrome, this

definition is likely to overestimate the actual number of ILI visits. However, this definition was used consistently throughout the study period and therefore time trends could still reflect changes over time in ED use due to ILI. Two syndromic indicators were used: weekly count of all ED visits (ED ILI volume), and percentage of all ED visits that were triaged as an ILI (ED ILI percent). Although probably correlated, these indicators measure different aspects of ED utilization. It is possible at times to have a low volume of ILI visits (compared to other periods) but still represent a large percentage of all ED visits.

### GFT data

Estimates of GFT ILI consultation rates for Manitoba were downloaded from the GFT website [13] for the period December 2005 to February 2011. GFT uses a validated algorithm (updated annually) and Google’s aggregated search query data to provide region-specific estimates of flu activity in near real-time [13]. In Canada, these estimates are validated using data from the FluWatch sentinel surveillance system capturing ILI-related primary-care visits [14]. Hence, GFT estimates are presented as the number of ILI cases/100 000 physician visits, which we refer to as the GFT ILI consultation rate [13].

### Virological data

Weekly counts of laboratory-confirmed influenza A, including pandemic H1N1 (pH1N1), and influenza B cases were obtained from the Flu Surveillance website of Manitoba Health for the 2005–2006 to 2010–2011 flu seasons [15]. In Manitoba, the number of laboratory-confirmed influenza is usually reported on weekly basis between November and April the following year (the period corresponding to influenza seasons in the Northern hemisphere). However, during 2009 reporting continued throughout the year. Over the study period, laboratory testing for influenza was commonly performed using a polymerase chain reaction assay, and occasionally using viral culture or immunoassays [16]. As per convention, specimen collection date is used for assignment to reported weekly counts.

### Statistical analysis

Time-series curves for the virological data consisting of the weekly counts of the laboratory-confirmed

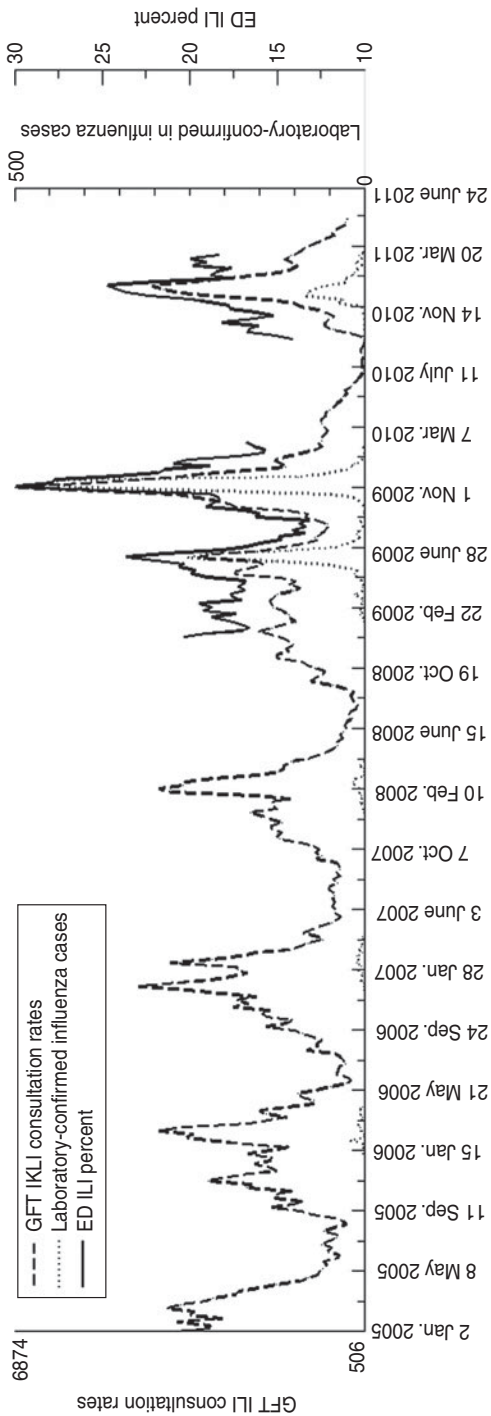


Fig. 1. Time-series for weekly counts of laboratory-confirmed influenza with corresponding Google flu trends influenza-like illness (GFT ILI) consultation rates and emergency department influenza-like illness (ED ILI) percent.

influenza A and B cases for the individual seasons were plotted against the weekly ED ILI volume and ED ILI percent for the annual flu seasons of 2008–2009, 2009–2010 and 2010–2011, and against the weekly GFT ILI consultation rates.

To determine how much of the variability in the number of laboratory-confirmed influenza cases occurring during week  $t$  ( $y_t$ ) could be explained by ED ILI volume at week  $t - \tau$  ( $x_{t-\tau}$ ), the following linear model was fitted to the data:

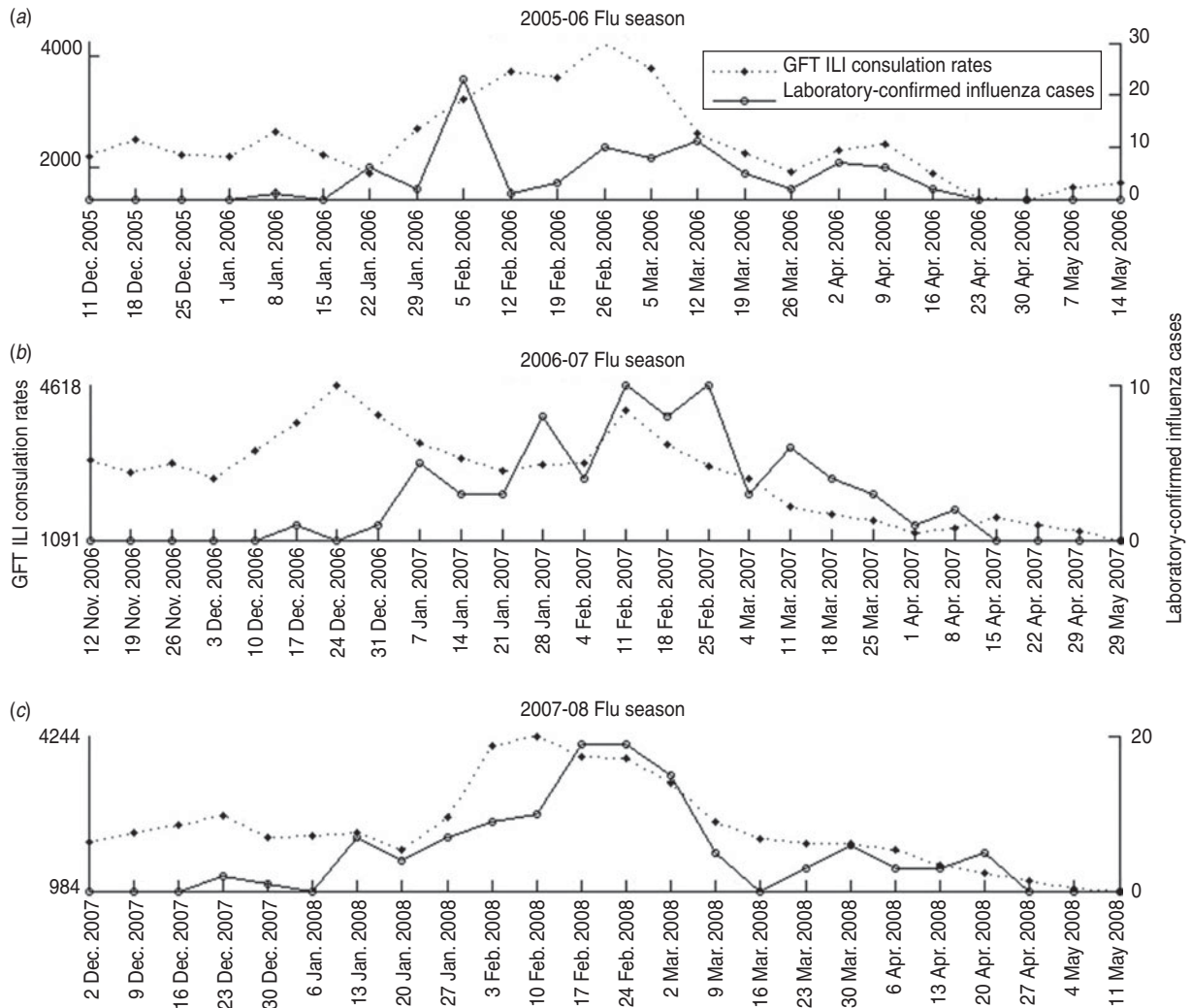
$$y_t = \beta_0 + \beta_1 x_{t-\tau}. \tag{model1}$$

Model estimates were obtained for different lag periods of the syndromic indicators in relation to weekly laboratory-confirmed cases ( $\tau=0, 1$  and  $2$  weeks, where  $\tau=0$  indicates no lag and  $\tau=1$  indicates a lag of 1 week whereby weekly number of laboratory-confirmed cases is correlated with syndromic indicator data of the previous week). The coefficient of determination,  $R^2$  ( $0 \leq R^2 \leq 1$ ), was used as a measure of the goodness of fit of our models to the observed data, with a larger value of  $R^2$  (closer to 1) reflecting a better linear model fit. As there is only a single explanatory variable in model 1,  $R^2$  is equivalent to the square of Pearson’s correlation coefficient measuring the strength of association between the response and the explanatory variables. Similar models were also fitted for the other two indicators, ED ILI percent and GFT ILI consultation rates. All analyses were performed using Matlab [17].

**RESULTS**

Figure 1 presents time-series data, with weekly counts of laboratory-confirmed influenza cases in Manitoba plotted against ED ILI percent and GFT ILI consultation rates. The congruity between the curves of these two syndromic indicators and the curve of the weekly counts of influenza cases is evident. The two pandemic waves, May–July 2009 and October–December 2009 are clearly discernible in all time-series (Fig. 1).

Figure 2 shows the time series for the weekly counts of laboratory-confirmed influenza cases for the 2005–2006, 2006–2007 and 2007–2008 flu seasons in Manitoba (the seasons prior to the implementation of EDIS), plotted against GFT ILI consultation rates. Over the course of these three flu seasons, there is an increasing congruence between the two time series (Fig. 2). Overall, the correlation of GFT ILI consultation rates with laboratory-confirmed cases increases consistently over the years since its



**Fig. 2.** Time-series for weekly counts of laboratory-confirmed influenza cases and Google flu trends influenza-like illness (GFT ILI) consultation rates in Manitoba during influenza seasons: (a) 2005–2006, (b) 2006–2007, (c) 2007–2008.

introduction (Table 1). The concurrent model (with no lag) increased from 0.226 in the 2005–2006 season to around 0.698 in the two most recent seasons (2009–2010 and 2010–2011). A similar trend was seen for models with a lag of 1 and 2 weeks, although the correlation estimates were slightly weaker than the corresponding estimates from the concurrent model.

Figure 3 shows the time series for the laboratory-confirmed influenza cases, plotted with the ED ILI percent and GFT ILI consultation rates for the 2008–2009, 2009–2010 and 2010–2011 flu seasons (the seasons that followed the implementation of EDIS). The three curves show similar trends, with a clear rise in the GFT ILI consultation rates and ED ILI percent curve ahead of the epidemic curve. As shown in Table 2, the ED ILI percent indicator

is more strongly correlated with virological data than the indicator based on ED ILI volume. Both ED ILI volume and ED ILI percent had a stronger correlation with a 1-week lag in the 2008–2009 season, and with no lag in the subsequent two seasons. Generally, correlations for ED ILI volume were stronger in models with 1-week lag, whereas for the ED ILI percent indicator, the concurrent model was generally more strongly correlated than the models with lag time.

Table 3 shows that the indicators based on ED ILI volume and ED ILI percent were both strongly correlated with the GFT ILI consultation rates, especially during the second wave of the 2009 pandemic. Correlations were generally weaker in the models with lag time.

Table 1. Results from linear regression analysis, based on model 1, for the weekly counts of laboratory-confirmed influenza cases (dependent variable) with Google flu trends influenza-like-illness consultation rate (predictor variable), by flu season and lag period

Season	No lag		1-week lag		2-week lag	
	$\beta_1$	$R^2$	$\beta_1$	$R^2$	$\beta_1$	$R^2$
2005–2006	0.003	0.226	0.003	0.193	0.002	0.092
2006–2007	0.001	0.058	0.001	0.103	0.002	0.202
2007–2008	0.005	0.581	0.005	0.625	0.005	0.493
2008–2009	0.114	0.623	0.094	0.425	0.062	0.188
2009–2010	0.073	0.699	0.076	0.742	0.066	0.556
2010–2011	0.019	0.697	0.015	0.432	0.010	0.192

## DISCUSSION

We found that ILI syndromic indicators based on GFT and ED utilization data were highly correlated with each other, and with the number of laboratory-confirmed influenza specimens collected in the same or the following week. This suggests that GFT and ED indicators may be better able to detect the early stages of influenza circulation and ILI outbreaks than laboratory data.

Our results are plausible because individuals experiencing early symptoms of influenza may be likely to perform internet searches about their symptoms, and GFT incorporates search query data into its estimations. Many of these individuals may also present to EDs, but most of them are unlikely to have specimens taken for laboratory-confirmation in the absence of severe disease and secondary complications [6, 18]. As a result, ED data reflecting increased utilization by ILI patients is probably more sensitive than virological surveillance for monitoring influenza disease activity. Further, whereas data from GFT and ED information systems become available to surveillance and public health officials by the end of the week of interest, the number of positive laboratory-confirmed influenza specimens collected that week do not become available until all specimens have been tested and results transferred from the various laboratories to public health authorities for collation and analysis and may not become available for decision-making until several days have elapsed. Thus, GFT and EDIS data can provide a timely and economical way of monitoring influenza disease activity.

The correlation of GFT data with laboratory-confirmed cases has increased consistently over the past six flu seasons, despite only one change to the GFT prediction model which occurred between the 2009 and 2010 flu seasons (Dr R. Patel, personal communication, February 2013). The change in the prediction model does not explain the strengthening correlation because all the data used in the analysis (including pre-2009 data) were generated using the new model. The reasons for the improved correlation are not clear, but might be related to a documented increase in influenza testing across Canada [19] (improving the quality of the virological data), or possibly to increased internet use [20] (improving the quality of GFT data [8]). There was a significant increase in influenza testing volumes in Manitoba in 2009 due the H1N1 pandemic, and changes to surveillance and clinical testing guidelines, and testing volumes have remained high in subsequent influenza seasons [19].

Our findings that GFT data correlated well with virological data and ED utilization data are consistent with the results of a similar study conducted in Baltimore [21]. Like our study, strong correlations were found between GFT estimates and laboratory-confirmed influenza cases (0.88), GFT and adult ED ILI presentations (0.88), and GFT and ED ILI volume (0.65) [19]. Our results are also consistent with those of another study which found that the correlation between GFT and US CDC virological data from 140 laboratories across the USA was 0.72 from 2003 to 2008, and the mean of individual seasonal correlations was 0.79 [22].

Most studies of the use of ED syndromic indicators for influenza surveillance have investigated its use for early outbreak detection. One such study found that a syndromic surveillance system in New York City which uses ED chief complaints to identify ILI cases could detect influenza outbreaks 2 weeks sooner than increases in laboratory-confirmed cases were noted and 3 weeks sooner than sentinel physicians reported increases in ILI [23]. A study conducted in Washington, DC compared ED complaints and diagnoses to CDC regional ILI data and found that those consistent with pneumonia, viral illness, and upper respiratory infection were together good indicators of the start of the flu season [24]. Like our study, these studies demonstrate that readily available syndromic indicators may be able to predict influenza activity. Very few studies that were aware of that investigated the use of EDIS and GFT data to monitor seasonal influenza activity specifically and not

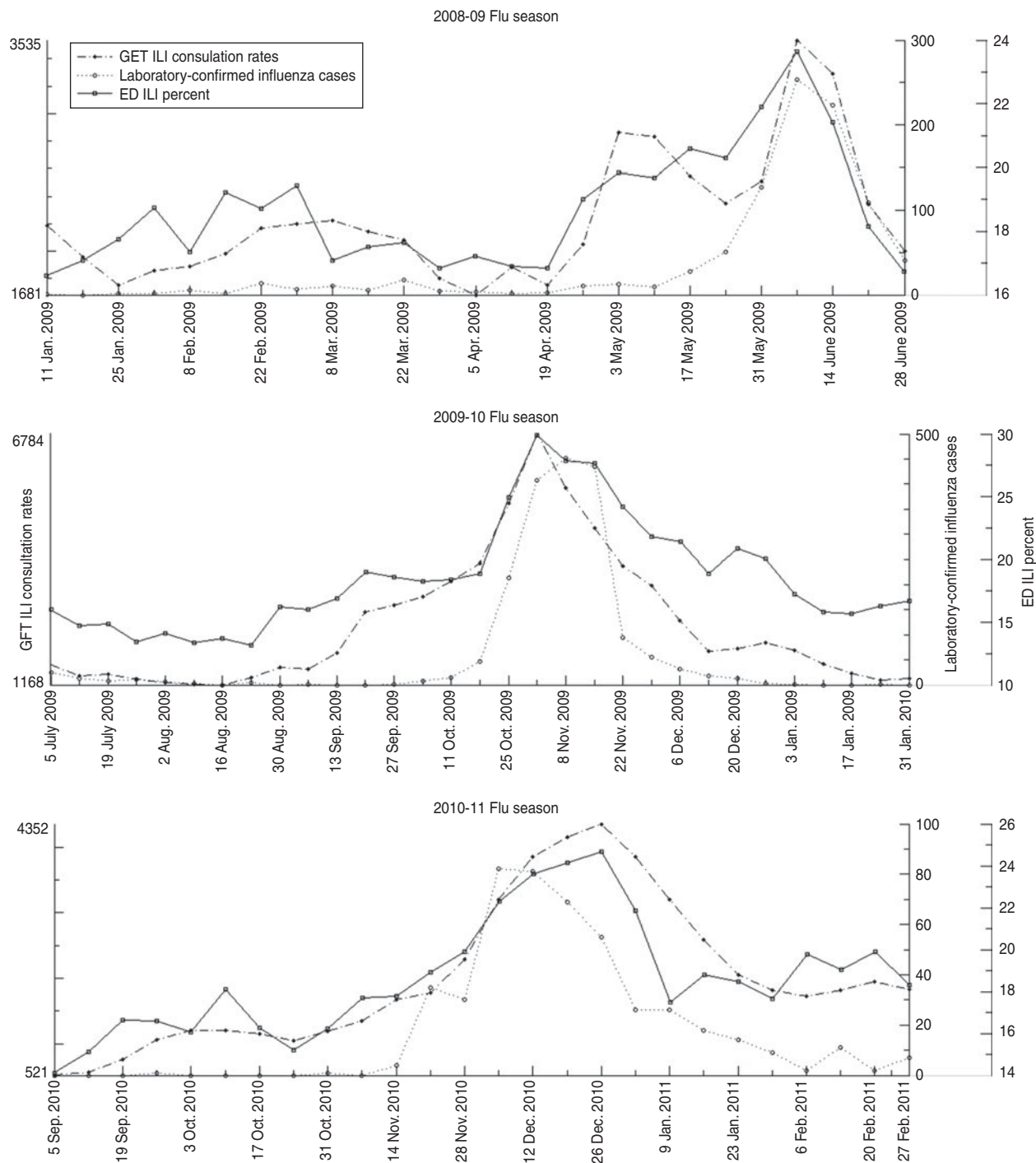


Fig. 3. Time-series for weekly counts of laboratory-confirmed influenza cases.

their use as early warning systems to detect outbreaks. The use of electronic ED patient data for syndromic surveillance of seasonal influenza was investigated in Victoria, Australia using data from July 2001 to August 2009 [25]. During the flu seasons (but not outside of the flu seasons), five ICD-10 codes in combination (influenza, pneumonia, acute upper

respiratory infection, acute lower respiratory infection, unspecified viral infection) were found to be moderately ( $r=0.56$ ) correlated with weekly counts of laboratory-confirmed influenza cases, and the authors suggested that the observed seasonality was due to the influence of what the ED staff believed was occurring in the community [25].

Table 2. Results from linear regression analysis, based on model 1, for the weekly counts of laboratory-confirmed influenza cases (dependent variable) with ED ILI volume and ED ILI percent (predictor variables), by flu season and lag period

Season	No lag		1-week lag		2-week lag	
	$\beta_1$	$R^2$	$\beta_1$	$R^2$	$\beta_1$	$R^2$
ED ILI volume						
2008–2009	0.3344	0.4921	0.3864	0.6483	0.3422	0.5148
2009–2010	0.3814	0.7738	0.3418	0.6183	0.2465	0.3181
2010–2011	0.1126	0.6070	0.0874	0.3721	0.0594	0.1753
ED ILI percent						
2008–2009	27.3579	0.5518	30.9147	0.6810	24.5657	0.4345
2009–2010	24.6486	0.7130	21.6534	0.5485	15.5750	0.2826
2010–2011	7.7382	0.6931	6.4073	0.4848	4.8165	0.2780

ED ILI, Emergency department influenza-like illness.

Table 3. Results from linear regression analysis, based on model 1, for the weekly counts of ED ILI volume and ED ILI percent (dependent variables) with Google flu trends ILI consultation rate (predictor variable), by flu season and lag period

Season	No lag		1-week lag		2-week lag	
	$\beta_1$	$R^2$	$\beta_1$	$R^2$	$\beta_1$	$R^2$
ED ILI volume						
2008–2009	0.2317	0.5845	0.1328	0.2148	0.0557	0.0402
2009–2010	0.1889	0.8901	0.1831	0.8271	0.1621	0.6517
2010–2011	0.1398	0.7556	0.1093	0.5054	0.0697	0.2215
ED ILI percent						
2008–2009	0.0032	0.6770	0.0018	0.2257	0.0007	0.0303
2009–2010	0.0027	0.8481	0.0028	0.8468	0.0026	0.7294
2010–2011	0.0023	0.8276	0.0018	0.5879	0.0012	0.3024

ED ILI, Emergency department influenza-like illness.

Although correlated, ED ILI percent and ED ILI volume are distinct measures. This might be quite apparent in small EDs or EDs in communities with low disease volumes, which may have relatively few patients with other more serious illnesses and therefore, while the volume of ILI cases may be low because of the low number of patients in smaller or healthier communities, it would represent a relatively large proportion of patients compared to other EDs. Similarly, while specialized EDs and large EDs serving large and diverse populations with a range of illnesses may have considerably more ILI cases than smaller EDs, this could represent a minority of patients presenting to these EDs.

Our study has several limitations. As this study is based on Manitoba data only, the results may not apply to other regions. Our analysis of EDIS data is

limited to EDs in Winnipeg only, whereas GFT and virological data apply to the whole province. This is likely to have weakened the correlation between EDIS data and provincial flu activity, although this impact is probably limited because most EDs in Manitoba are located in Winnipeg. Our study is also limited by the fact that EDIS data were available for only three flu seasons, one of which corresponded to the 2009 H1N1 pandemic.

In this study, we assessed the ability of GFT and EDIS data to act as signals of the level of influenza activity in the community. These signals are not specific to the demographic characteristics of the community or the circulating viral subtypes, which is data that we did not have, and thus only provide indications of the start and magnitude of the epidemic wave and not the predominant influenza subtype or the severity

of resulting disease. The effect of circulating subtypes and age groups affected by influenza in particular seasons on the ability of these indicators to predict circulating influenza could be the subject of future research.

We found that ED ILI percent, ED ILI volume, and the GFT ILI consultation rates were strongly correlated with the weekly number of laboratory-confirmed influenza cases during three recent flu seasons suggesting that ED and GFI data can provide a timely and economic way of monitoring influenza disease activity. Information obtained from these syndromic surveillance sources can be used to plan for public health interventions, such as messages to healthcare facilities, schools, and the public regarding appropriate measures for infection prevention and control. EDIS may also be particularly useful for acute-care service utilization planning because data is specific to particular hospitals (and their catchment areas). In our experience, information from syndromic indicators is most helpful in understanding disease activity when interpreted collectively in relation to each other and to other sources of surveillance information (e.g. sentinel and routine laboratory virological data). Because of their lack of specificity, individual syndromic indicators may overestimate or underestimate disease activity, e.g. when other respiratory viruses are circulating in the community [26]. While the use of syndromic indicators may be useful for monitoring influenza activity, they are not intended to replace traditional influenza surveillance systems and should rather be used to complement them.

#### ACKNOWLEDGEMENTS

L.H.T. is supported by a joint University of Manitoba Graduate Fellowship/Manitoba Health Research Council Studentship and the Canada Institutes of Health Research International Infectious Disease & Global Health Training Program. S.M.M. was supported by an Establishment grant from the Manitoba Health Research Council. S.M.M. is a Canada Research Chair in Pharmaco-epidemiology and Vaccine Evaluation and the Great-West Life, London Life and Canada Life Junior Investigator of the Canadian Cancer Society (grant no. 2011-700644). The authors are grateful to anonymous external reviewers for their careful review of this manuscript.

#### DECLARATION OF INTEREST

None.

#### REFERENCES

1. Rothberg MB, Haessler SD, Brown RB. Complications of viral influenza. *American Journal of Medicine* 2008; **121**: 258–264.
2. Sosin DM. Syndromic surveillance: the case for skilful investment. *Biosecurity & Bioterrorism* 2003; **1**: 247–253.
3. Elliot A. Syndromic surveillance: the next phase of public health monitoring during the H1N1 influenza pandemic. *Eurosurveillance* 2009; **14**: 44.
4. Centres for Disease Control and Prevention. Syndromic surveillance: an applied approach to outbreak detection (<http://www.cdc.gov/ncphi/diss/nndss/syndromic.htm>). Accessed 1 October 2010.
5. Cadieux G, et al. Accuracy of syndrome definitions based on diagnoses in physician claims. *BMC Public Health* 2011; **11**: 17.
6. Zheng W, et al. Potential for early warning of viral influenza activity in the community by monitoring clinical diagnoses of influenza in hospital emergency departments. *BMC Public Health* 2007; **7**: 250.
7. Moore K. Real-time syndrome surveillance in Ontario, Canada: the potential use of emergency departments and Telehealth. *European Journal of Emergency Medicine* 2004; **11**: 1.
8. Ginsberg J, et al. Detecting influenza epidemics using search engine query data. *Nature* 2009; **457**: 1012–4.
9. Cook S, et al. Assessing Google flu trends performance in the United States during the 2009 influenza virus A (H1N1) pandemic. *PLoS ONE* 2011; **6**: e23610.
10. Wilson N, et al. Interpreting Google flu trends data for pandemic H1N1 influenza: the New Zealand experience. *Eurosurveillance* 2009; **14**(44).
11. Malik MT, et al. 'Google flu trends' and emergency department triage data predicted the 2009 pandemic H1N1 waves in Winnipeg, Manitoba. *Canadian Journal of Public Health* 2011; **102**: 294.
12. Afilalo M, Stern E, Oughton M. Evaluation and management of seasonal influenza in the emergency department. *Emergency Medicine Clinics of North America* 2012; **30**: 271–305.
13. Google Flu Trends - Canada. ([www.google.org/](http://www.google.org/)). Accessed 22 December 2011.
14. Public Health Agency of Canada. Flu watch for 6 September 2009 to 12 September 2009 (week 36) ([http://www.phacasc.gc.ca/fluwatch/09-10/w36\\_09/index-eng.php](http://www.phacasc.gc.ca/fluwatch/09-10/w36_09/index-eng.php)). Accessed 23 September 2009.
15. Manitoba Health. Flu reports (<http://www.gov.mb.ca/health/publichealth/surveillance/reports.html#i-nfluenza>). Accessed 24 March 2013.
16. LeBlanc J, et al. Switching gears for an influenza pandemic: validation of a duplex reverse transcriptase PCR assay for simultaneous detection and confirmatory identification of pandemic (H1N1) 2009 influenza virus. *Journal of Clinical Microbiology* 2009; **47**: 3805.
17. MATLAB. Version 7.10.0 (R2010a). Natick, Massachusetts: The MathWorks Inc., 2010.
18. Westheimer E, et al. Evaluating the New York City emergency department syndromic surveillance for



- monitoring influenza activity during the 2009–10 influenza season. *PLoS Currents* 2012; **4**: e500563f3ea181.
19. **Public Health Agency of Canada.** (<http://www.phac-aspc.gc.ca/fluwatch/>) FluWatch. Accessed 24 March 2013.
  20. **comScore Inc.** Canada digital future in focus, March 2013 ([http://www.comscore.com/Insights/Presentations\\_and\\_Whitepapers/2013/2013\\_Canada\\_Digital\\_Future\\_in\\_Focus](http://www.comscore.com/Insights/Presentations_and_Whitepapers/2013/2013_Canada_Digital_Future_in_Focus)). Accessed 24 March 2013.
  21. **Dugas AF, et al.** Google Flu Trends: correlation with emergency department influenza rates and crowding metrics. *Clinical Infectious Diseases* 2012; **54**: 463–469.
  22. **Ortiz JR, et al.** Monitoring influenza activity in the United States: a comparison of traditional surveillance systems with Google flu trends. *PLoS ONE* 2011; **6**: e18687.
  23. **Heffernan R, et al.** Syndromic surveillance in public health practice, New York City. *Emerging Infectious Diseases* 2004; **10**: 858–864.
  24. **May LS, et al.** Emergency department chief complaint and diagnosis data to detect influenza-like illness with an electronic medical record. *Western Journal of Emergency Medicine* 2010; **11**: 1–9.
  25. **Moore K, et al.** Syndromic surveillance for influenza in two hospital emergency departments. Relationships between ICD-10 codes and notified cases, before and during a pandemic. *BMC Public Health* 2011; **11**: 338.
  26. **Butler D.** When Google got flu wrong. *Nature* 2013; **494**: 155.