


RESEARCH

Open Access



Global water quality changes posing threat of increasing infectious diseases, a case study on malaria vector *Anopheles stephensi* coping with the water pollutants using age-stage, two-sex life table method

Mahmoud Fazeli-Dinan¹, Mostafa Azarnoosh¹, Mehmet Salih Özgökçe², Hsin Chi³, Nasibeh Hosseini-Vasoukolaei¹, Farzad Motevalli Haghi¹, Mohamad Ali Zazouli⁴, Seyed Hassan Nikookar¹, Reza Dehbandi⁵, Ahmadali Enayati^{1*} , Morteza Zaim⁶ and Janet Hemingway⁷

Abstract

Background: Water pollution due to uncontrolled release of chemical pollutants is an important global problem. Its effect on medically important insects, especially mosquitoes, is a critical issue in the epidemiology of mosquito-borne diseases.

Methods: In order to understand the effect of water pollutants on the demography of *Anopheles stephensi*, colonies were reared in clean, moderately and highly polluted water for three consecutive generations at 27 °C, 75% RH, and a photoperiod of 12:12 h (L:D). The demographic data of the 4th generation of *An. stephensi* were collected and analysed using the age-stage, two-sex life table.

Results: The intrinsic rate of increase (r), finite rate of increase (λ), mean fecundity (F) and net reproductive rate (R_0) of *An. stephensi* in clean water were 0.2568 d⁻¹, 1.2927 d⁻¹, 251.72 eggs, and 109.08 offspring, respectively. These values were significantly higher than those obtained in moderately polluted water ($r=0.2302$ d⁻¹, $\lambda=1.2589$ d⁻¹, 196.04 eggs, and $R_0=65.35$ offspring) and highly polluted water ($r=0.2282$ d⁻¹, $\lambda=1.2564$ d⁻¹, 182.45 eggs, and $R_0=62.03$ offspring). Female adult longevity in moderately polluted (9.38 days) and highly polluted water (9.88 days) were significantly shorter than those reared in clean water (12.43 days), while no significant difference in the male adult longevity was observed among treatments.

Conclusions: The results of this study showed that *An. stephensi* can partially adapt to water pollution and this may be sufficient to extend the range of mosquito-borne diseases.

Keywords: Global water pollutants, *Anopheles stephensi*, Malaria vector, Life table, Adaptation

Background

Mosquitoes are important vectors of many diseases, including malaria, dengue fever, chikungunya, yellow fever, Zika, encephalitis, and filariasis [1–3]. *Anopheles* mosquitoes are particularly important as they transmit malaria [4]. The World Health Organization (WHO)

*Correspondence: aenayati1372@gmail.com

¹ Department of Medical Entomology and Vector Control, Health Sciences Research Center, Faculty of Health, Mazandaran University of Medical Sciences, Sari, Iran
Full list of author information is available at the end of the article



© The Author(s) 2022. **Open Access** This article is licensed under a Creative Commons Attribution 4.0 International License, which permits use, sharing, adaptation, distribution and reproduction in any medium or format, as long as you give appropriate credit to the original author(s) and the source, provide a link to the Creative Commons licence, and indicate if changes were made. The images or other third party material in this article are included in the article's Creative Commons licence, unless indicated otherwise in a credit line to the material. If material is not included in the article's Creative Commons licence and your intended use is not permitted by statutory regulation or exceeds the permitted use, you will need to obtain permission directly from the copyright holder. To view a copy of this licence, visit <http://creativecommons.org/licenses/by/4.0/>. The Creative Commons Public Domain Dedication waiver (<http://creativecommons.org/publicdomain/zero/1.0/>) applies to the data made available in this article, unless otherwise stated in a credit line to the data.

estimated there were 241 million malaria cases globally and 627,000 deaths in 2020 which were only slightly lower than those in 2010 and 2017 [5–7]. In Iran, *Anopheles stephensi* is an important vector of malaria [8, 9]. This species is widely distributed in Asia including India, Pakistan, Afghanistan, Iran, Iraq, Bahrain, Oman, Saudi Arabia, Bangladesh, Myanmar, and South China [10]. Recently the distribution of this species expanded to Sri Lanka, Djibouti, Ethiopia, Sudan and Somalia [11]. In Iran, this species has a wide distribution in Khuzestan, Fars, Kerman, Hormozgan, Sistan va Baluchestan, and southern Kermanshah provinces [8, 12, 13]. It has been the main malaria vector in Iran for many decades and still causes sporadic malaria cases in the South and Southeast areas of Iran [8].

Malaria transmission by *Anopheles* mosquitoes is influenced by their population density, which is affected by a number of abiotic factors of aquatic habitats [14]. The physicochemical factors of aquatic habitats affect the survival, development, and fecundity of *Anopheles* and, consequently can play a key role in malaria outbreaks [15–17]. Usually, *Anopheles* mosquitoes breed in clean water bodies; however, some *Anopheles* larvae are able to complete their life cycle in polluted waters [18, 19]. Human domestic, industrial and agricultural activities have increased pollution in aquatic environments through wastewater, solid waste, application of detergents, pesticides and fertilizers [20, 21]. Global warming and environmental changes may increase aquatic pollution in the future [22–24]. There is the potential for adaptation of mosquitoes to these pollutants [25]. Therefore, the assessment of the impact of water pollutants on the population fitness of *Anopheles* is important [26, 27].

The ecological features of vector populations such as stage-specific survival, development, and fecundity are key components of disease epidemiology [28]. Life tables are used to evaluate the effect of water pollution on the growth, development, survival and fecundity of mosquitoes [29]. This offers the most comprehensive understanding of the population characteristics [30, 31], and female age-specific life tables have been widely used in numerous studies. These have been applied to studies of the survivorship and reproductive strategies of colonized culicine and anopheline mosquitoes such as *Aedes aegypti* [32], *Culex quinquefasciatus* [33], *Culex tritaeniorhynchus* [34], *An. stephensi* and *Anopheles culicifacies* [30]. Because the female age-specific life tables ignore the male population and cannot describe the stage differentiation, they cannot be used to predict population growth. Huang and Chi [35], Huang et al. [36] and Chi et al. [37] discussed in detail the problems of the female age-specific life tables. In contrast to the female age-specific life table, the age-stage, two-sex life

table can describe the stage differentiation and include the male population [29, 38, 39].

The goal of the present study was to compare the demographic characteristics of *An. stephensi* using the age-stage, two-sex life table approach in clean, moderately, and highly polluted water to assess the adaptive capacity of *An. stephensi* in breeding sites containing different degrees of pollutions, and provide detailed information on life table data of *An. stephensi* in polluted water.

Methods

Anopheles stephensi strain

The beech laboratory strain of *An. stephensi* was colonized in 1947 [40]. This subsection describes the methods used to maintain the colony in the insectary at the Medical Entomology and Vector Control Department, Mazandaran University of Medical Sciences, where it has been maintained for at least five generations. Eggs of *An. stephensi* (no older than 24 h) were put in white enamel trays (38 cm in length, 25 cm in width, and 10 cm in height) containing two litres of tap water allowing no more than 200 larvae in each tray [41]. Trays were kept at 27 ± 2 °C, $75 \pm 5\%$ RH and a photoperiod 12:12 h (L: D). About 24 h after eggs hatching, 0.5 g of TetraMin® fish food was daily added to the tray as larval food [41, 42]. When the 4th instars were observed, trays were checked daily for the presence of pupae. Pupae were collected and transferred into screened plastic cups containing tap water. Emerged adults, with a 1:1 ratio of male and female (25 pairs), were transferred to a screened rearing cage (40 × 40 × 40 cm) where they could readily mate. A restrained guinea pig was supplied to females for blood-feeding for 120 min. Initially, attempts were made to sedate the guinea pigs with different drugs, however this caused unusual malformations in the legs of the emerging adult mosquitoes (becoming hook like). Unfortunately, a high proportion failed to fully hatch from the pupal case and drowned. Mosquito blood feeding was carried out according to the ethical approval No. IR.MAZUMS.REC.1398.1398.

A vial containing cotton wicks soaked in a 10% sugar solution was placed in each cage as the source of energy for adults. To minimize the growth of mold or bacteria, sugar solution and cotton wicks were replaced every three days. Mosquitoes were offered blood meals every 3 days, until all females had died. A white enamel bowl (7 cm diameter × 15 cm height) filled with 150 ml tap water was placed in the cage to collect mosquito eggs. The bowl was checked daily and newly laid eggs were transferred to trays filled with tap water.

Pollutants and preparation of polluted water samples

In this study, total organic carbon (TOC), nitrate, and phosphate which are the common contaminants of aquatic environments were considered as the pollutants. Water samples of three different qualities were prepared: clean water treatment (i.e., control treatment), moderately polluted water, and highly polluted water. Deionized water (DI) and tap water were used for the preparation of all stock solutions and polluted water. Clean water was prepared with tap water and deionized water (1:1 in ratio). All tap waters used for preparation of treatment waters were set aside for 24 h in the laboratory to remove chlorine. The chemical characteristics of moderately and highly polluted water samples containing different concentrations of nitrate, phosphate and total organic carbon (TOC) which were prepared in the laboratory are listed in Table 1. The moderately polluted water mimicked the concentration of pollutants in mosquito larval habitats in Mazandaran Province [16]. Highly polluted water had the maximum permissible amount of each component in drinking water according to the World Health Organization standard [43]. Water samples were prepared by adding humic acid, sodium nitrate (NaNO₃) and potassium dihydrogen phosphate (KH₂PO₄) to clean water as the sources for TOC, nitrate and phosphate, respectively [44].

Total organic carbon (TOC) as a measure of the amount of organic compounds in all water samples was measured according to the Standard Method 5310B using TOC-VCSH TOC Analyzer (Shimadzu, Japan). If a water sample contains gross solids or insoluble matter, it is filtered to obtain homogenous solution. After this preparatory step, sample is injected into the analyzer according to the manufacturer’s instructions. Organic carbon is oxidized (during a combustion process in the instrument) to carbon dioxide, CO₂. The resulting CO₂ is purged from the solution and carried to an infrared analyzer specifically tuned to quantify the CO₂ contents of the sample. The instrument’s microprocessor converts the detector

signal to organic carbon concentration in mg/L based on a stored calibration curve [45]. The concentration of nitrate and phosphate was determined by spectrophotometry (Hach Company DR 2000), according to the Standard Methods [46]. Electrical conductivity (EC) and pH were measured using a table pH/EC meter (Eutech Instrument). The concentration of candidate chemicals along with pH and EC in the different water samples were controlled every three days throughout the experiments.

Life table study

Age-stage, two-sex life tables were used to analyse the influence of water conditions on the development and survival of *An. stephensi*. The mosquitoes were raised in the three different water treatments for four generations before recording differences in the population parameters. The three water treatments were: clean, moderately and highly polluted water.

To conduct the study, newly emerged male (n = 25) and female (n = 25) adults were released into screened rearing cages (40 × 40 × 40 cm) and were offered 10% sucrose solution in vials with cotton wicks. Mosquitoes were blood-fed after mating on a restrained guinea pig. White enamel bowls (7 cm diameter × 15 cm height) filled with 150 ml of the respective water were used to collect mosquito eggs. To determine the life table, newly hatched first instar larvae (L₁) were used. For this purpose, egg masses (about 200 eggs) laid within 24 h of each treatment were transferred to white enamel bowls containing each of the water treatments. After hatching, 150 newly hatched first instar larvae (L₁) were individually transferred into 8-cell containers (one larva per cell; dimension of each cell: 10 × 3 × 3 cm) containing 35 ml of each water type per cell. Larvae were fed daily with a diet of TetraMin® fish food (0.0025 gr per larva). The numbers of live mosquitoes at each developmental stage [47] were observed daily. Subsequently, newly emerged males and females were reared in group (as many as emerged in circa 1:1 ratio) in cages (40 × 40 × 40 cm) and data files were prepared as group-reared life table and analysed [48]. A white paper sheet was placed on the bottom of the cage to facilitate the identification and removal of dead mosquitoes. Dead adults were sexed and removed daily. Both sugar solution and blood meal were routinely offered to the mosquitoes as detailed previously. A white enamel bowl filled with water of the respective treatment was provided for egg collection. The bowl was replaced daily. Egg masses were kept until hatched and the number of hatched eggs was recorded as daily fecundity. The procedure was repeated until all adults in the cage died. During the life table study, mosquitoes were kept at 27 ± 2 °C, 75 ± 5% RH and a photoperiod 12:12 h (L: D).

Table 1 Quality of clean, moderately polluted and highly polluted water: concentration of phosphate, nitrate, and total organic carbon (TOC), pH and electrical conductivity (EC)

Parameter	Clean water	Moderately polluted water	Highly polluted water
Phosphate (mg. L ⁻¹)	<0.01	2	6
Nitrate (mg. L ⁻¹)	<0.01	5	50
TOC (mg. L ⁻¹)	<0.01	5	10
pH	7.33	7.17	7.24
EC (µS/cm)	380.4	465.6	544.2

Life table data analyses

All life table raw data on the development, survival and daily fecundity of *An. stephensi* were analysed according to the age-stage, two-sex life table theory [38, 39] using the TWOSEX-MSChart program [49]. The age-stage-specific survival rate (s_{xj} : the probability that a newborn egg will survive to age x and stage j); the age-specific survival rate (l_x : probability that a newborn egg will survive to age x); female fecundity (F : eggs/female); the age-stage-specific fecundity (f_{xj} : the number of hatched eggs produced by female adult at age x); the age-specific fecundity (m_x : the number of eggs per individual at age x); and age-specific maternity ($l_x m_x$: the product of l_x and m_x) were calculated. All population parameters including the intrinsic rate of increase (r), the finite rate of increase (λ), the net reproductive rate (R_0) and the mean generation time (T) were calculated.

The age-stage-specific survival rate (s_{xj}) was calculated as:

$$s_{xj} = \frac{n_{xj}}{n_{01}}$$

The age-specific survival rate (l_x) was calculated for both females and males using the following formula:

$$l_x = \sum_{j=1}^{\delta} s_{xj}$$

where δ is the last stage of the cohort.

The age-specific fecundity (m_x) at age x was calculated as:

$$m_x = \frac{\sum_{j=1}^{\delta} s_{xj} f_{xj}}{\sum_{j=1}^{\delta} s_{xj}}$$

The net reproductive rate (R_0) is the sum of all $l_x m_x$ (age-specific maternity) which considers the survival rate and is calculated by the following equation:

$$R_0 = \sum_{x=0}^{\infty} l_x m_x$$

The intrinsic rate of increase (r) is calculated using the Lotka-Euler equation with age indexed from zero [50] using the following formula:

$$\sum_{x=0}^{\infty} e^{-r(x+1)} l_x m_x = 1$$

The finite rate of increase (λ) was calculated as $\lambda = e^r$. The mean generation time (T) is the time length that a population requires to increase to R_0 -fold of its size

as time approaches infinity and the population settles down to a stable age-stage distribution and is calculated as:

$$T = \frac{\ln R_0}{r}$$

Age-stage specific life expectancy (e_{xj}) defined as the number of days that an individual of age x and stage j is expected to live, is calculated using the following equation by assuming $s'_{xj} = 1$;

$$e_{xj} = \sum_{i=x}^{\infty} \sum_{y=j}^{\delta} s'_{iy}$$

where s'_{iy} is the probability that an individual of age x and stage j will survive to age i and stage y .

The reproductive value (v_{xj}) represents the contribution of individuals of age x and stage j to the future population [51] and was estimated using the following formula [29, 52]:

$$v_{xj} = \frac{e^{r(x+1)}}{s_{xj}} \sum_{i=x}^{\infty} e^{-r(x+1)} \sum_{y=j}^{\delta} s'_{iy} f_{iy}$$

Since anopheline mosquitoes require 8–12 days (depending on the malaria parasite species) to become infective [53, 54], the number of female adults that survived more than 10 days ($N_{f,AL \geq 10}$) and the proportion of these female adults in the life table cohort ($N_{f,AL \geq 10}/N$) were calculated.

To estimate standard errors of the life-table parameters, group-reared data was converted to individual-reared data [48]. Then the bootstrap technique was used with 100,000 resampling [55, 56] and differences between treatments were assessed using the paired bootstrap [57, 58].

The parameter of adult pre-oviposition period (APOP) was calculated based on the period between the emergence of an adult female until initiation of the first oviposition; and total pre-oviposition period (TPOP) was calculated based on the time interval from egg to the beginning of oviposition of the resulting adult. Oviposition days (O_d) defined as the number of days in which females laid eggs [58, 59].

Population projection

The life table data obtained were used to project the population size of *An. stephensi* [36]. Ten newly laid eggs of *An. stephensi* were used as the initial population to project the total population size for 40 days using the computer program TIMING-MSChart (Chi 2021). The 100,000 bootstrap results of the finite rate (λ) were sorted

to find the life table of 2.5th and 97.5th percentiles (i.e., the 2500th and 97,500th sorted bootstrap samples) of the finite rate. These life tables were then used to predict the variability of population growth [36].

Results

Development, survival and reproduction

The durations of all stages of *An. stephensi* reared in three water treatments are shown in Table 2. The effect of water quality on developmental duration of the egg, larva, pupa, and adult stage of *An. stephensi* were variable. The longevity of adult females raised in clean water (average of 12.43 ± 0.81 days) was significantly longer than those whose immatures were raised in moderately (9.38 ± 0.65 days) or highly (9.88 ± 0.60 days) polluted water. There were significant differences in pupal duration among treatments. The shortest pupal duration was observed in the clean water treatment. However, there was no significant difference in total pre-adult duration among treatments. The immature survival rate in clean water ($0.79\% \pm 0.03$) was significantly higher than that in highly polluted water ($0.64\% \pm 0.04$) (Table 2).

When *An. stephensi* was reared in clean water, the mean fecundity was 251.72 ± 23.38 eggs/female, which is the highest among all treatments and significantly higher than that of highly polluted water (182.45 ± 18.95 eggs/

female, $P=0.021$), but not significantly different from that in the moderately polluted water (196.04 ± 24.03 eggs/female, $P=0.095$). In the clean water treatment, the oviposition days (O_d : the number of oviposition days) of *An. stephensi* was 7.84 ± 0.57 days, which was significantly longer than those in moderately and highly polluted treatments (Table 2).

There were no significant differences in adult pre-oviposition period (APOP) and total pre-oviposition period (TPOP) among treatments. The average adults' female longevity was 12.43 ± 0.81 days in the clean water treatment, which was significantly longer than those in moderately (9.38 ± 0.65 days) and highly polluted water (9.88 ± 0.60 days). The total longevity of female individuals in clean water treatment was also significantly longer than those in moderately and highly polluted treatments. The age-stage-specific survival rates (s_{xj}) (Fig. 1) showed that untreated *An. stephensi* survived longer than those in the moderately and highly polluted water. The shorter s_{xj} curves of male *An. stephensi* in comparison with those of females showed longer survival of females. There were no significant differences in male adult longevity and total male longevity among treatments.

Age-specific survival (l_x), age-specific fecundity of the total population (m_x), and age-specific maternity ($l_x m_x$) of *An. stephensi* are demonstrated in Fig. 2. The m_x curve

Table 2 Developmental duration, longevity, adult pre-oviposition period (APOP), total pre-oviposition period (TPOP), oviposition days (O_d), total longevity of all eggs, and mean fecundity (\pm SE) of *Anopheles stephensi* reared in different water treatments

Stage	Clean water		Moderately polluted		Highly polluted	
	n	Mean \pm SE	n	Mean \pm SE	n	Mean \pm SE
Egg (days)	150	1.11 \pm 0.03 b	150	1.14 \pm 0.03 ab	150	1.19 \pm 0.03 a
1 st Instar (days)	149	1.88 \pm 0.03 a	150	1.63 \pm 0.04 b	150	1.80 \pm 0.03 a
2 nd Instar (days)	147	2.20 \pm 0.06 a	150	2.12 \pm 0.03 a	149	2.09 \pm 0.04 a
3 rd Instar (days)	127	1.94 \pm 0.06 a	143	1.94 \pm 0.05 a	120	2.00 \pm 0.06 a
4 th Instar (days)	121	2.28 \pm 0.01 b	121	1.90 \pm 0.04 ab	108	2.24 \pm 0.04 a
Pupa (days)	118	1.21 \pm 0.04 c	104	2.02 \pm 0.01 a	96	1.35 \pm 0.05 b
Pre-adult (days)	118	10.52 \pm 0.05 a	104	10.42 \pm 0.05 a	96	10.50 \pm 0.05 a
Immature survival rate (%)	150	0.79 \pm 0.03 a	150	0.69 \pm 0.04 ab	150	0.64 \pm 0.04 b
Male adult longevity (days)	53	3.45 \pm 0.14 a	54	3.56 \pm 0.19 a	45	3.89 \pm 0.20 a
Male total longevity (days)	53	13.98 \pm 0.18 a	54	13.83 \pm 0.23 a	45	14.33 \pm 0.26 a
Female adult longevity (days)	65	12.43 \pm 0.81 a	50	9.38 \pm 0.65 b	51	9.88 \pm 0.60 b
Female total longevity (days)	65	22.94 \pm 0.86 a	50	19.96 \pm 0.71 b	51	20.43 \pm 0.66 b
Total longevity (days)	150	16.64 \pm 0.61 a	150	14.57 \pm 0.43 b	150	14.33 \pm 0.48 b
APOP (days)	63	1.48 \pm 0.06 a	48	1.40 \pm 0.07 a	50	1.44 \pm 0.07 a
TPOP (days)	63	12.00 \pm 0.00 a	48	12.00 \pm 0.00 a	50	12.00 \pm 0.00 a
Oviposition days (O_d) (days)	65	7.84 \pm 0.57 a	48	5.90 \pm 0.46 b	50	6.06 \pm 0.44 b
Female fecundity (F) (eggs/female)	65	251.72 \pm 23.38 a	50	196.04 \pm 24.03 ab	51	182.45 \pm 18.95 b

Means in the same row followed by different lower-case letters are significantly different based on the confidence intervals of the differences between different treatments using the paired bootstrap test ($P < 0.05$)

Means in the same column followed by different upper-case letters denote significant difference between sexes in the same treatment

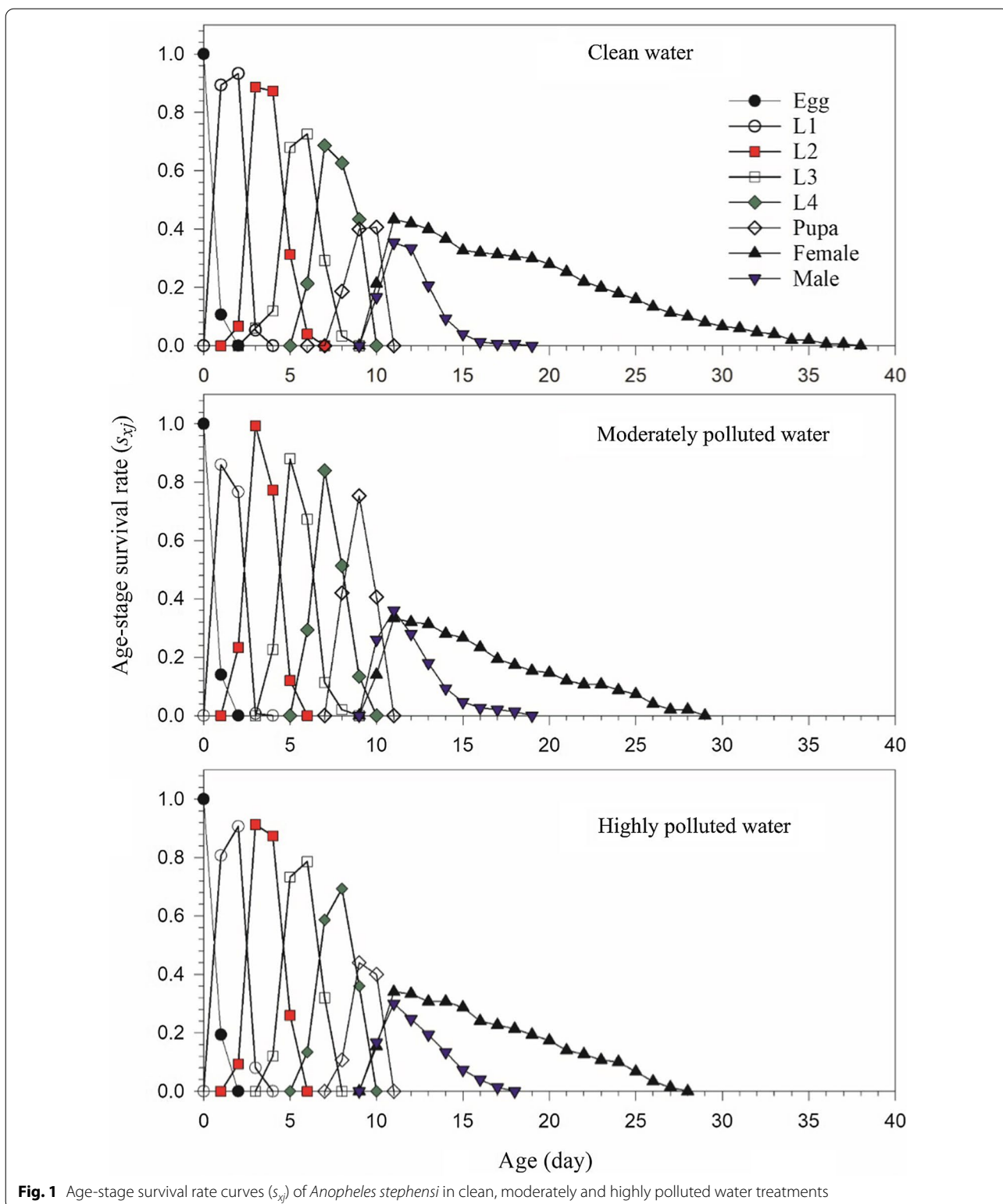


Fig. 1 Age-stage survival rate curves (s_{xj}) of *Anopheles stephensi* in clean, moderately and highly polluted water treatments

revealed the periodic reproduction of *An. stephensi*. The m_x curve for *An. stephensi* reared in clean water was extended from age 12 d to 38 d, which was significantly longer than the other two treatments. The longer

reproductive period in the clean water treatment was consistent with the higher number of oviposition days ($O_d = 7.84 \pm 0.57$) (Table 2). Although higher peaks in the m_x curve was observed in the moderately polluted water,

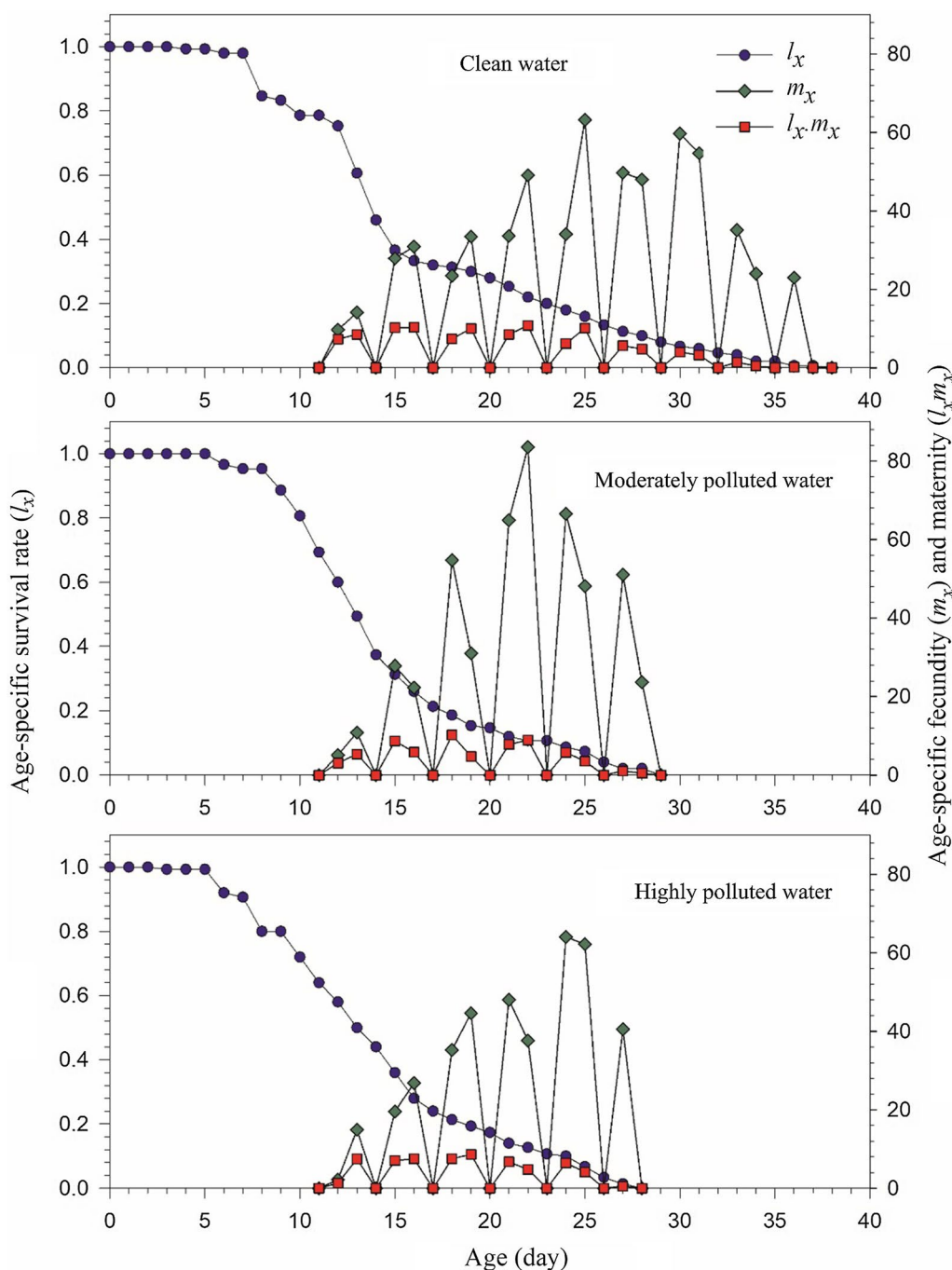


Fig. 2 Age-specific survival rate (l_x), age-specific fecundity (m_x), and age-specific maternity ($l_x m_x$) of *Anopheles stephensi* in clean, moderately and highly polluted water treatments

the net maternity ($l_x m_x$) was lower than that of the clean water treatment due to the lower survival rate (l_x).

Population parameters

The intrinsic rate of increase (r), finite rate of increase (λ), the net reproductive rate (R_0) and mean generation

time (T) are given in Table 3. The value of r , λ and R_0 for *An. stephensi* in clean water was $0.2568 \pm 0.0066 \text{ d}^{-1}$, $1.2927 \pm 0.0085 \text{ d}^{-1}$ and 109.08 ± 14.33 offspring/individual, respectively. These values were higher than those in moderately and highly polluted water. No significant differences were observed between moderately and highly

Table 3 Means (\pm SE) of population parameters of *Anopheles stephensi* reared in clean, moderately and highly polluted water: r , intrinsic rate of increase; λ , finite rate of increase; R_0 , net reproductive rate; T , mean generation time; $N_{f,AL \geq 10}$, number of female adults with adult longevity ≥ 10 days; $N_{f,AL \geq 10}/N$, proportion of female adults in cohort with adult longevity ≥ 10 days

Parameters	Clean water	Moderately polluted	Highly polluted
r (d^{-1})	0.2568 \pm 0.0066 a	0.2302 \pm 0.0081 b	0.2282 \pm 0.0079 b
λ (d^{-1})	1.2927 \pm 0.0085 a	1.2589 \pm 0.0102 b	1.2564 \pm 0.0098 b
R_0 (offspring/individual)	109.08 \pm 14.33 a	65.35 \pm 10.91 b	62.03 \pm 9.47 b
T (d)	18.27 \pm 0.24 a	18.16 \pm 0.28 a	18.08 \pm 0.23 a
$N_{f,AL \geq 10}$	45.00 \pm 5.62 a	22.00 \pm 4.14 b	27.00 \pm 4.68 b
$N_{f,AL \geq 10}/N$	0.30 \pm 0.0375 a	0.1467 \pm 0.0288 b	0.18 \pm 0.0312 b

Means in the same row followed by different letters are significantly different based on the confidence intervals of the differences between treatments using the paired bootstrap test ($P < 0.05$)

polluted water. There was no significant difference in the mean generation time (T) among treatments.

Out of 150 eggs, 45 female adults survived longer than 10 days ($N_{f,AL \geq 10} = 45.00 \pm 5.62$ females) in clean water, which was significantly more than that in moderately polluted water ($N_{f,AL \geq 10} = 22.00 \pm 4.14$ females) and that in highly polluted water ($N_{f,AL \geq 10} = 27.00 \pm 4.68$ females). The proportion of these female adults in clean water was 0.3 (i.e., $N_{f,AL \geq 10}/N = 0.30 \pm 0.0375$), which was significantly greater than that in the moderately polluted water ($N_{f,AL \geq 10}/N = 0.1467 \pm 0.0288$), and highly polluted water ($N_{f,AL \geq 10}/N = 0.18 \pm 0.0312$), respectively.

The life expectancy (e_{xj}) of each age-stage group of *An. stephensi* is illustrated in Fig. 3. It represents the time that an individual of age x and stage j is expected to live [60]. The mean life expectancy of a newly laid egg (e_{01}) was 16.64, 14.57 and 14.33 d in clean, moderately and highly polluted water treatment, respectively (Table 2). When the first female adult emerged, life expectancy was 12.94, 9.96 and 10.43 d in the clean, moderately and highly polluted water (Fig. 3), respectively; while the life expectancy curve for the male adult began with 3.93, 3.83 and 4.33 d in the clean, moderately and highly polluted water, respectively. The lower curves of male adults showed the male adults had a shorter longevity than females. The reproductive value (v_{xj}) is the contribution of individuals of age x and stage j to the future population (Fig. 4). At age 0, the reproductive value v_{01} is exactly the finite rate of increase (λ), i.e., 1.2927 ± 0.0085 , 1.2589 ± 0.0102 and $1.2564 \pm 0.0098 d^{-1}$, in the clean, moderately and highly polluted water, respectively. The first peak of reproductive value for *An. stephensi* reared in clean, moderately and highly polluted water was 38.88, 37.75, and 36.22 d^{-1} at age 10 d when the female adult emerged.

Population projection

Population growth projections with stage structures are shown in Fig. 5. The stage overlaps during population

growth are evident. The total population size at the end of 40 days and its uncertainty are shown in Fig. 6. In the clean water treatment, the population size reached 63,246 individuals after 40 days, it was much higher than those in the moderately polluted water (24,401 individuals) and highly polluted water treatments (21,732 individuals), respectively (Fig. 6).

By using the bootstrap technique, the uncertainty of population parameter of *An. stephensi* was estimated by using 100,000 resampling. The uncertainty of finite rate was shown in Fig. 7. The 100,000 finite rates randomly fluctuated around the mean (Fig. 7A1–A3). When these values were sorted in ascending order, a smooth curve was obtained (Fig. 7B1–B3). Frequency distribution of the 100,000 bootstrap finite rates of the *An. stephensi* in the different water habitats showed a normal distribution (Fig. 7C1–C3). The 0.025 and 0.975 percentiles of the finite rate of increase were obtained from the sorted data (Fig. 7B1–B3, C1–C3).

Discussion

In this study, the effect of water pollution on the population fitness of *An. stephensi* is presented. The mosquito larvae of malaria vectors can adapt to aquatic environments with different physicochemical characteristics [25, 61–63]. *Anopheles* species, such as *An. stephensi*, *An. culicifacies*, *Anopheles gambiae* and *Anopheles coluzzii* can adapt to a wide range of water bodies including waste or polluted waters [14, 25, 64, 65]. Knowledge on the population fitness of major malaria vectors breeding in different aquatic environments can inform disease and vector management strategies. Life table data offers comprehensive information about a population, and provide a useful tool for population ecology and pest management [36]. Based on the age-stage, two-sex life table, it was demonstrated that *An. stephensi* could successfully survive and reproduce when their eggs and larvae were reared in moderately or highly polluted water. Using

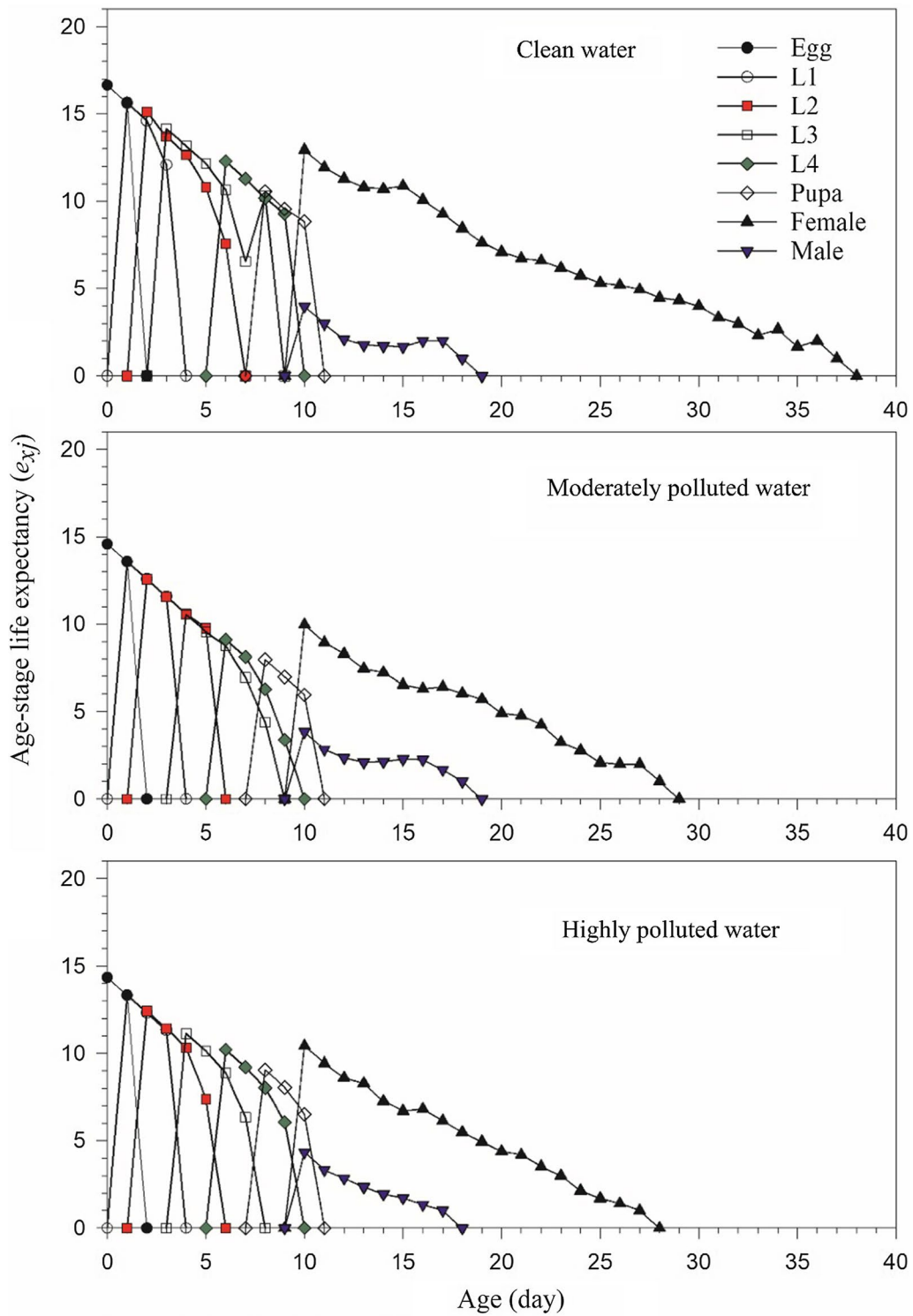


Fig. 3 Age-stage-specific life expectancy (e_{xj}) of *Anopheles stephensi* in clean, moderately and highly polluted water treatments

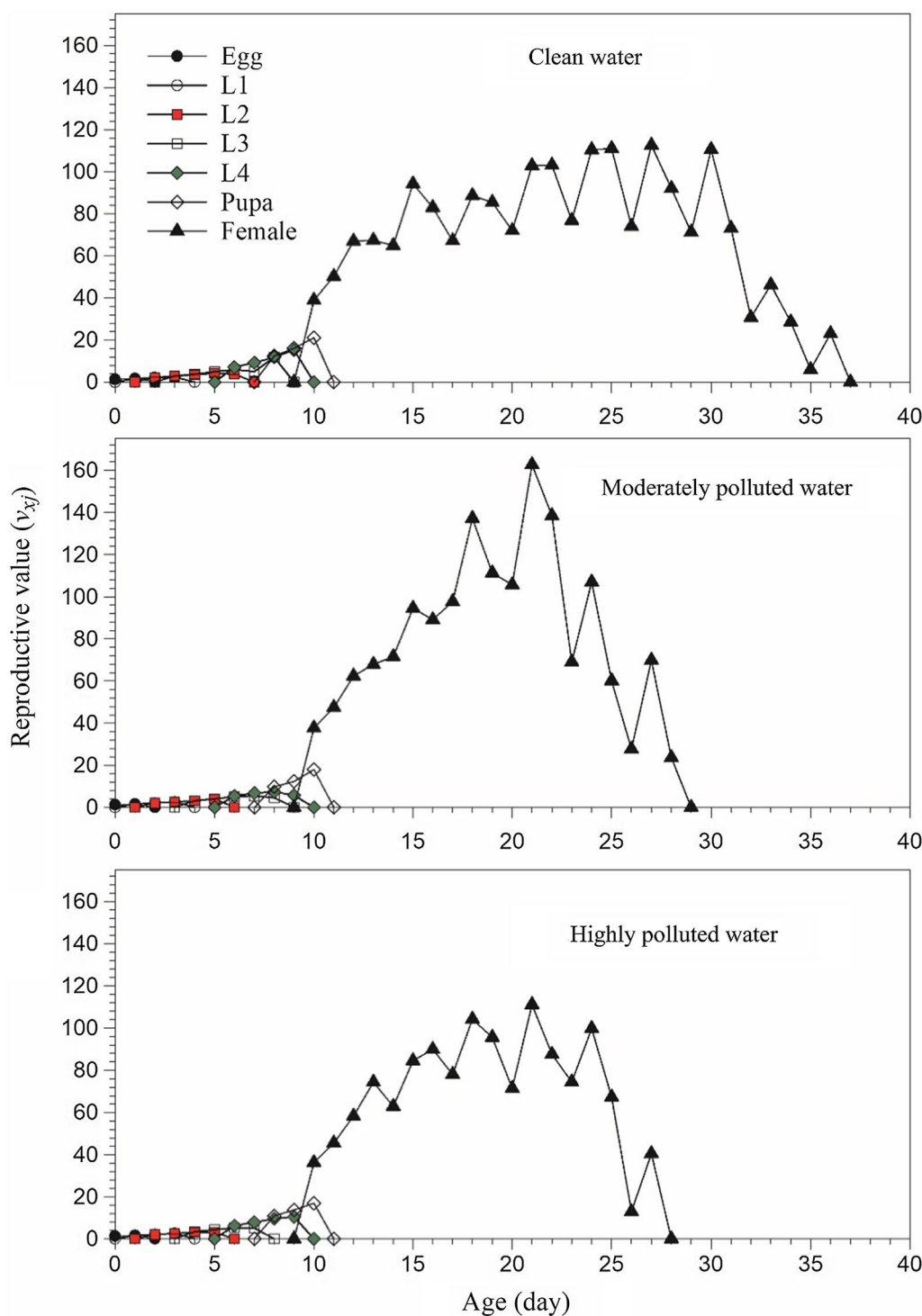


Fig. 4 Age-stage-specific reproductive value (v_{xj}) of *Anopheles stephensi* in clean, moderately and highly polluted water treatments

Kaplan–Meier estimator with log-rank test, Oliver and Brooke showed similar adaptation of *Anopheles arabiensis* in metal polluted water [27]. Because the Kaplan–Meier method is only a descriptive method for the

survival rate while ignoring the fecundity, it offers limited information about the population fitness.

In the present study, there were no significant differences in the development time of the total pre-adult

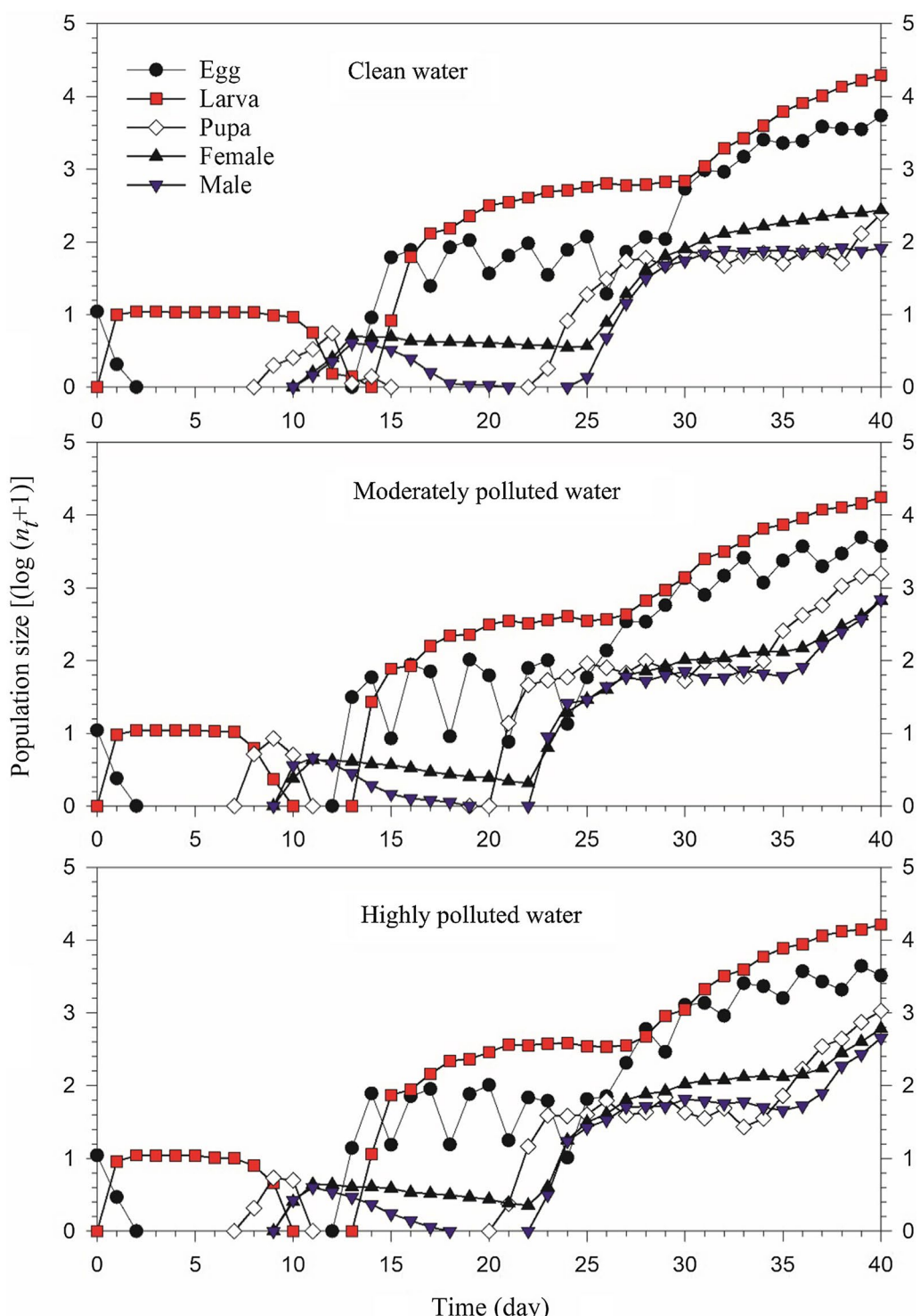
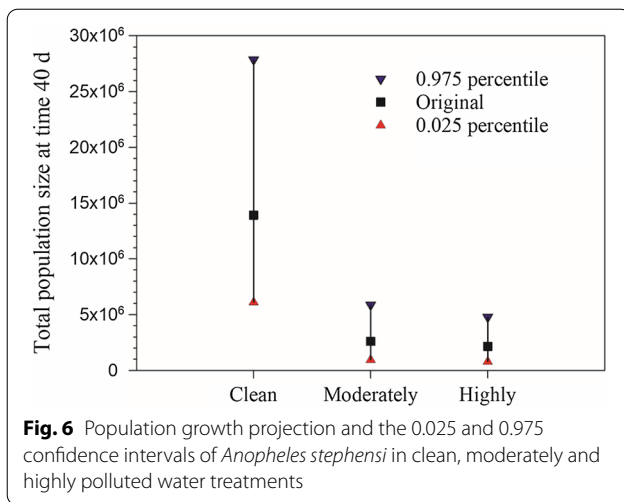


Fig. 5 Population projection of *Anopheles stephensi* in clean, moderately and highly polluted water treatments

duration of *An. stephensi* among clean, moderately polluted, and highly polluted water. However, the mean longevity of female adults emerging from clean water

(12.43 d) was significantly longer than those from the moderately (9.38 d) and highly polluted water (9.88 d). It is necessary to mention here that female adult longevity

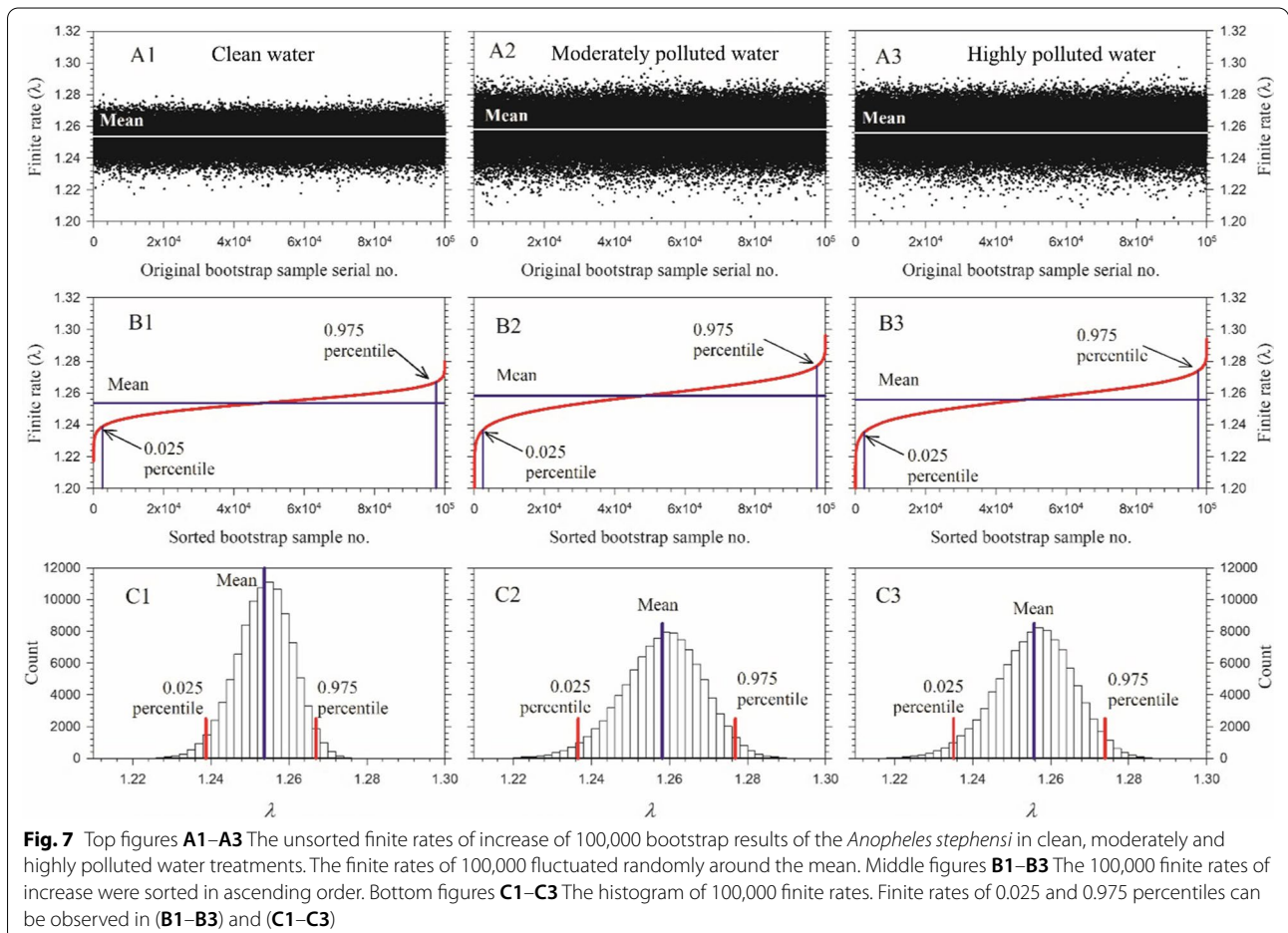


influences vector potential, because the malaria parasite requires time to complete their development and sporogonic life cycle inside the mosquito body [28, 53]. This usually takes 8–12 days (intrinsic incubation period – the

time required for an individual female to become infectious) depending on the malaria parasite species and the environmental factors [53, 54]. This means that at least some of the individuals in the cohorts may live longer than the intrinsic incubation period required for the sporogonic life cycle.

Despite significant differences in female longevity, there was no difference in adult pre-oviposition (APOP) and total pre-oviposition period (TPOP), i.e. the time needed to begin oviposition did not change due to water pollution. Earlier studies showed that *An. gambiae* and *Aedes aegypti* could adapt to water pollutants including cadmium chloride, copper nitrate and lead nitrate with costs of biological fitness such as reduction of egg viability, immature survivorship and reduced reproductive capacity [27, 66].

The life table parameters (r , λ , and R_0) of *An. stephensi* were reduced in polluted water compared with those in clean water. It was revealed that *An. stephensi* has the ability to adapt to increasing levels of nitrate, phosphate and TOC, despite the unfavourable effect on the mosquito's life table parameters.



However, the adaptation of mosquitoes to polluted water poses a serious challenge to the spread of diseases, such as malaria [66, 67], but the biological costs to mosquitoes should not be overlooked. For a correct assessment of the cost of biological fitness for adaptation, it is necessary to consider multiple population characteristics, as with the age-stage, two-sex life table, which includes the development duration, stage differentiation, survival and daily fecundity [38, 39]. After four generations of selection, the costs for mosquitoes to adapt to polluted water was largely seen as reduced longevity of the adult females, which consequently resulted in a lower number of oviposition events and lower lifetime fecundity. Limited studies have been performed on the underlying molecular response of *Anopheles* to water pollutants, e.g., tolerance to heavy metals can be caused by differential expression of metallothioneins and mucins [68, 69]. It was suggested that mosquitoes can regulate their biological program through proteome changes to counter polluted aquatic habitats [68]. Some species of *Anopheles*, such as *An. gambiae*, could genetically adapt to chemically altered aquatic habitats [66]. Also, previous studies showed that the life history parameters of mosquitoes are affected by ecological features, therefore they may undergo changes (molecular/structural) in order to adapt to the new conditions [28, 70]. Reduced fecundity can be the cost to tolerate pollutants in aquatic habitats [28, 66], as in this study. This adaptation is important for *An. stephensi*, which prefers to live near its human hosts and, therefore, increasingly encounters chemical pollutants in potential breeding sites, especially in urban areas.

The decreased life table parameters of *Anopheles* in polluted water did cause reduction in the rate of population growth. However, the long-term effect of mosquitoes' adaptation to water pollution needs to be monitored. First of all, pollution can affect the biodiversity of the aquatic organisms so that the species composition changes from natural species to compatible species [71]. Therefore, if natural enemies of the mosquito do not tolerate pollutants, they will lose the capacity of natural reduction of the mosquito population. Secondly, adaptation of *Anopheles* mosquitoes to polluted water can predispose them to insecticide resistance selection [72–74]. Therefore, chemical control programmes may fail to reduce the mosquito population. Some pollutants, such as nitrates and phosphates, can create a large proliferation of algae and bacteria, which is generally detrimental to aquatic organisms. This does not seem to be a serious problem for the *Anopheles* because their larvae and pupae breath directly from air through their siphons [75, 76], so an increase in the growth of algae

and bacteria may increase mosquito larval food sources [77–79]. Hence although there is a measurable difference in life table parameters of mosquitoes in polluted water under laboratory conditions, these may be mitigated in field conditions.

The importance of this issue is understood by considering the fact that malaria incidence rate and its management can be assessed by the mathematical model such as "basic reproductive rate" (R_0) [80] which has been used for the malaria risk assessment. R_0 is calculated using the $R_0 = \frac{ma^2bc p^n}{r(-lmp)}$ formula [80]. This is very important to note that changes in the life table parameters affect the density (m) and probability of living (p) of *Anopheles* mosquitoes, the two most important components of the disease reproduction rate (R_0). According to the results of this study, the reduced life table parameters will result in the reduction of the parameters of m and p in the above equation; therefore, it seems that the disease transmission and risk of malaria would reduce. However, care must be taken to extend the negative impact of life table parameters under laboratory conditions on the R_0 to the real life situation, and natural field condition studies with the same or other pollutants are recommended to conclude the impact of the water pollutants on the risk of malaria spread in a given area.

It should be noted that the present study faced with some limitations including: for individual rearing of mosquitoes, eggs would have to be singly put in small rearing trays, during this procedure, damage to the eggs might have been inevitable, the end result of which have been observed by rather small hatching rate. Therefore, the study was performed on individual L_1 stage. Secondly, individual rearing of male and female adults was not possible in cages because most females did not show a desire to feed blood or if they did, they laid a small amount of eggs; therefore, this part of the study was performed as a group.

Conclusion

Findings presented in this paper demonstrate the impact of environmental pollutants including nitrate, phosphate and TOC on life table parameters such as r and R_0 , among others, of *An. stephensi* in the laboratory. Larval stages of *An. stephensi* prefer unpolluted water [25, 53–55], however, in the face of increasing environmental pollution on one hand and climate change leading to alteration of weather patterns (droughts, floods) on the other, they evolve to adapt to the situation enduring some fitness costs. Therefore, this adaptation may impact the distribution range of *An. stephensi*, as well as changes in

the vectorial capacity of the mosquito, factors that may have epidemiological and vector control implications.

Abbreviations

r : The intrinsic rate of increase; λ : Finite rate of increase; R_0 : The net reproductive rate; T : Mean generation time; e_{xj} : Life expectancy; s_{xj} : Age-stage-specific survival rate; f_{xj} : Age-stage-specific fecundity; l_x : Age-specific survival rate; m_x : Age-specific fecundity; $l_x m_x$: Age-specific maternity; APOP: Adult pre-oviposition period; TPOP: Total pre-oviposition period.

Acknowledgements

We would like to thank the deputy of research and technology of Mazandaran University of Medical Sciences for its support of this research.

Author contributions

MF and AA designed the study. MA, SHN, NH and FMH reared and collated the *Anopheles* data. HC, MF, and MSO undertook the analyses. MF, AA, MZ and JH led the writing of the manuscript. HC, MSO, MF, AA, JH and MZ performed the interpretation of analyses and joined the writing after the first draft. All authors contributed critically to the drafts and gave final approval for publication. All the authors read and approved the final manuscript.

Funding

Research reported in this publication was supported by Elite Researcher Grant Committee under award number 988000 from the National Institutes for Medical Research Development (NIMAD), Tehran, Iran. The Mazandaran University of Medical Sciences, Iran also contributed.

Availability of data and materials

The datasets analyzed during the current study are available from the corresponding author (aenayati1372@gmail.com) on request.

Declarations

Ethics approval and consent to participate

This research was approved by the Mazandaran University of Medical Sciences ethics committee under number the IR.MAZUMS.REC.1398.1398.

Consent for publication

All the authors read the manuscript and consented for its publication in *Malaria Journal*.

Competing interests

The authors state that there is no conflict of interest.

Author details

¹Department of Medical Entomology and Vector Control, Health Sciences Research Center, Faculty of Health, Mazandaran University of Medical Sciences, Sari, Iran. ²Faculty of Agriculture, Department of Plant Protection, Van Yuzuncu Yil University, 65080 Van, Turkey. ³Institute of Applied Ecology, Fujian Agriculture and Forestry University, Fuzhou 350002, China. ⁴Department of Environmental Health, Health Sciences Research Center, Addiction Institute, Faculty of Health, Mazandaran University of Medical Sciences, Sari, Iran. ⁵Environment Technologies Research Center, Ahvaz Jundishapur University of Medical Sciences, Ahvaz, Iran. ⁶Department of Medical Entomology and Vector Control, School of Public Health and National Institute of Health Research, Tehran University of Medical Sciences, Tehran, Iran. ⁷Department of Vector Biology, Liverpool School of Tropical Medicine, Liverpool, UK.

Received: 16 January 2022 Accepted: 24 May 2022

Published online: 08 June 2022

References

- Eldridge BF, Edman JD. *Medical entomology: a textbook on public health and veterinary problems caused by arthropods*. Berlin: Springer; 2004. p. 660.

- Service M. *Medical entomology for students*. 5th ed. Cambridge: Cambridge University Press; 2012.
- Nikookar SH, Fazeli-Dinan M, Enayati A, Zaim M. Zika; a continuous global threat to public health. *Environ Res*. 2020;188: 109868.
- Lehane MJ. *The biology of blood-sucking in insects*. Cambridge: Cambridge University Press; 2005.
- WHO. *World malaria report. 20 years of global progress and challenges*. Geneva: World Health Organization; 2020.
- WHO. *World malaria report*. Geneva: World Health Organization; 2019.
- WHO. *World malaria report*. Geneva: World Health Organization; 2021.
- Sanei-Dehkordi A, Soleimani-Ahmadi M, Jaberhashemi SA, Zare M. Species composition, seasonal abundance and distribution of potential anopheline vectors in a malaria endemic area of Iran: field assessment for malaria elimination. *Malar J*. 2019;18:157.
- Madani A, Soleimani-Ahmadi M, Davoodi SH, Sanei-Dehkordi A, Jaberhashemi SA, Zare M, et al. Household knowledge and practices concerning malaria and indoor residual spraying in an endemic area earmarked for malaria elimination in Iran. *Parasit Vectors*. 2017;10:600.
- Surendran SN, Sivabalakrishnan K, Gajapathy K, Arthiyan S, Jayadas TT, Karvannan K, et al. Genotype and biotype of invasive *Anopheles stephensi* in Mannar Island of Sri Lanka. *Parasit Vectors*. 2018;11:3.
- Surendran SN, Sivabalakrishnan K, Sivasingham A, Jayadas TT, Karvannan K, Santhirasegaram S, et al. Anthropogenic factors driving recent range expansion of the malaria vector *Anopheles stephensi*. *Public Health Front*. 2019;7:53.
- Hanafi-Bojd A, Vatandoost H, Oshaghi M, Haghdoost A, Shahi M, Sedaghat M, et al. Entomological and epidemiological attributes for malaria transmission and implementation of vector control in southern Iran. *Acta Trop*. 2012;121:85–92.
- Vatandoost H, Oshaghi M, Abaie M, Shahi M, Yaaghoobi F, Baghahi M, et al. Bionomics of *Anopheles stephensi* Liston in the malarious area of Hormozgan province, southern Iran, 2002. *Acta Trop*. 2006;97:196–203.
- Awolola T, Oduola A, Obansa J, Chukwura N, Unyimadu J. *Anopheles gambiae* ss breeding in polluted water bodies in urban Lagos, southwestern Nigeria. *J Vector Borne Dis*. 2007;44:241–4.
- Ndenga B, Githeko A, Omukunda E, Munyekenye G, Atieli H, Wamai P, et al. Population dynamics of malaria vectors in western Kenya highlands. *J Med Entomol*. 2014;43:200–6.
- Nikookar SH, Fazeli-Dinan M, Azari-Hamidian S, Mousavinasab SN, Arabi M, Ziapour SP, et al. Correlation between mosquito larval density and their habitat physicochemical characteristics in Mazandaran Province, northern Iran. *PLoS Negl Trop Dis*. 2017;11: e0005835.
- Nikookar S, Fazeli-Dinan M, Azari-Hamidian S, Mousavinasab S, Arabi M, Ziapour S, et al. Species composition and abundance of mosquito larvae in relation with their habitat characteristics in Mazandaran Province, northern Iran. *Bull Entomol Res*. 2017;107:598–610.
- Sattler MA, Mtasiwa D, Kiama M, Premji Z, Tanner M, Killeen GF, et al. Habitat characterization and spatial distribution of *Anopheles* sp. mosquito larvae in Dar es Salaam (Tanzania) during an extended dry period. *Malar J*. 2005;4:4.
- Kamdem C, Fossog BT, Simard F, Etoua J, Ndo C, Kengne P, et al. Anthropogenic habitat disturbance and ecological divergence between incipient species of the malaria mosquito *Anopheles gambiae*. *PLoS ONE*. 2012;7: e39453.
- Chen M, Zeng G, Zhang J, Xu P, Chen A, Lu L. Global landscape of total organic carbon, nitrogen and phosphorus in lake water. *Sci Rep*. 2015;5:15043.
- WHO. Nitrate and nitrite in drinking-water: background document for development of WHO Guidelines for Drinking-water Quality. Geneva: World Health Organization; 2003.
- Shellenberger M, Nordhaus T. The death of environmentalism: global warming politics in a post-environmental world. *Geopolit Hist Int Relat*. 2009;1:121–63.
- Manciocco A, Calamandrei G, Alleva E. Global warming and environmental contaminants in aquatic organisms: the need of the etho-toxicology approach. *Chemosphere*. 2014;100:1–7.
- Matus K, Yang T, Paltsev S, Reilly J, Nam KM. Toward integrated assessment of environmental change: air pollution health effects in the USA. *Clim Change*. 2008;88:59–92.

25. Gunathilaka N, Fernando T, Hapugoda M, Wickremasinghe R, Wijeyerathne P, Abeyewickreme W. *Anopheles culicifacies* breeding in polluted water bodies in Trincomalee district of Sri Lanka. *Malar J.* 2013;12:285.
26. Kudom AA. Larval ecology of *Anopheles coluzzii* in cape coast, Ghana: water quality, nature of habitat and implication for larval control. *Malar J.* 2015;14:447.
27. Oliver SV, Brooke BD. The effect of metal pollution on the life history and insecticide resistance phenotype of the major malaria vector *Anopheles arabiensis* (Diptera: Culicidae). *PLoS ONE.* 2018;13:e0192551.
28. Yurttas H, Alten B. Geographic differentiation of life table attributes among *Anopheles sacharovi* (Diptera: Culicidae) populations in Turkey. *J Vector Ecol.* 2006;31:275–84.
29. Tuan SJ, Lee CC, Chi H. Population and damage projection of *Spodoptera litura* (F.) on peanuts (*Arachis hypogaea* L.) under different conditions using the age-stage, two-sex life table. *Pest Manag Sci.* 2014;70:805–13.
30. Reisen WK, Mahmood F. Horizontal life table characteristics of the malaria vectors *Anopheles culicifacies* and *Anopheles stephensi* (Diptera: Culicidae). *J Med Entomol.* 1980;17:211–7.
31. Chi H. Timing-MSChart: a computer program for the population projection based on age-stage, two-sex life table. Taichung, Taiwan: National Chung Hsing University; <http://140.120.197.173/Ecology/Download/Timing-MSChart.rar>. 2020.
32. Crovello TJ, Hacker CS. Evolutionary strategies in life table characteristics among feral and urban strains of *Aedes aegypti* (L.). *Evolution.* 1972;26:185–96.
33. Suman D, Tikar S, Mendki M, Sukumaran D, Agrawal O, Parashar B, et al. Variations in life tables of geographically isolated strains of the mosquito *Culex quinquefasciatus*. *Med Vet Entomol.* 2011;25:276–88.
34. Reisen WK, Siddiqui TF, Aslam Y, Malik GM. Geographic variation among the life table characteristics of *Culex tritaeniorhynchus* from Asia. *Ann Entomol Soc Am.* 1979;72:700–9.
35. Huang YB, Chi H. Age-stage, two-sex life tables of *Bactrocera cucurbitae* (Coquillett) (Diptera: Tephritidae) with a discussion on the problem of applying female age-specific life tables to insect populations. *Insect Sci.* 2012;19:263–73.
36. Huang H-W, Chi H, Smith CL. Linking demography and consumption of *Henosepilachna vigintioctopunctata* (Coleoptera: Coccinellidae) fed on *Solanum photeinocarpum* (Solanales: Solanaceae): with a new method to project the uncertainty of population growth and consumption. *J Econ Entomol.* 2018;111:1–9.
37. Chi H, You M, Atlihan R, Smith CL, Kavousi A, Özgökçe MS, et al. Age-stage, two-sex life table: an introduction to theory, data analysis, and application. *Entomol Gen.* 2020;40:103–24.
38. Chi H. Life-table analysis incorporating both sexes and variable development rates among individuals. *Environ Entomol.* 1988;17:26–34.
39. Chi H, Liu H. Two new methods for the study of insect population ecology. *Bull Inst Zool Acad Sin.* 1985;24:225–40.
40. Gorouhi MA, Oshaghi MA, Vatandoost H, Enayati AA, Raeisi A, Abai MR, et al. Biochemical basis of cyfluthrin and DDT resistance in *Anopheles stephensi* (Diptera: Culicidae) in malarious area of Iran. *J Arthropod Borne Dis.* 2018;12:310.
41. Schmeid S, Seidahmed H, Soliban G, Stevens G, Thailayil A, Williams R. *Methods in Anopheles research*. 4th ed. Manassas: BEI Resources; 2014.
42. Christiansen-Jucht C, Parham PE, Saddler A, Koella JC, Basáñez MG. Temperature during larval development and adult maintenance influences the survival of *Anopheles gambiae* s.s. *Parasit Vectors.* 2014;7:1–10.
43. Frisbie SH, Mitchell EJ, Dustin H, Maynard DM, Sarkar B. World Health Organization discontinues its drinking-water guideline for manganese. *Environ Health Perspect.* 2012;120:775–8.
44. Zazouli M, Nasserli S, Mahvi A, Mesdaghinia A, Younecian M, Gholami M. Determination of hydrophobic and hydrophilic fractions of natural organic matter in raw water of Jalalieh and Tehranspars water treatment plants (Tehran). *J Appl Sci.* 2007;7:2651–5.
45. Standard Methods Committee of the American Public Health Association, American Water Works Association, and Water Environment Federation. 5310 Total organic carbon (TOC). In: Lipps WC, Baxter TE, Braun-Howland E, editors. *Standard methods for the examination of water and wastewater*. Washington DC: APHA Press; 2018. p. 1545.
46. Standard Methods Committee of the American Public Health Association, American Water Works Association, and Water Environment Federation, Lipps WC, Baxter TE, Braun-Howland E. *Standard methods for the examination of water and wastewater*. Washington DC: APHA Press; 2018. p. 1545.
47. Timmerman S. Molting and metamorphosis in mosquito larvae: a morphometric analysis. *J Swiss Entomol Soc.* 1998;71:373–87.
48. Chang C, Huang CY, Dai SM, Atlihan R, Chi H. Genetically engineered ricin suppresses *Bactrocera dorsalis* (Diptera: Tephritidae) based on demographic analysis of group-reared life table. *J Econ Entomol.* 2016;109:987–92.
49. Chi H. TWSEX-MSChart: a computer program for the age-stage, two-sex life table analysis. 2015;197. <http://140.120.197.173/Ecology/prod02.htm>
50. Goodman D. Optimal life histories, optimal notation, and the value of reproductive value. *Am Nat.* 1982;119:803–23.
51. Fisher R. *The genetical theory of natural selection*. Oxford: Clarendon Press; 1930. p. 272.
52. Huang YB, Chi H. The age-stage, two-sex life table with an offspring sex ratio dependent on female age. *J Agri Fore.* 2011;60:337–45.
53. Grieco JP, Achee NL, Briceno I, King R, Andre R, Roberts D, et al. Comparison of life table attributes from newly established colonies of *Anopheles albimanus* and *Anopheles vestitipennis* in northern Belize. *J Vector Ecol.* 2003;28:200–7.
54. Sandosham AA, Thomas V. *Malariaology: with special reference to Malaya*. Singapore: NUS Press; 1983. p. 408.
55. Efron B, Tibshirani RJ. *An introduction to the bootstrap*. Monographs on statistics and applied probability. Boca Raton: Chapman and Hall/CRC; 1993. p. 436.
56. Huang YB, Chi H. Assessing the application of the jackknife and bootstrap techniques to the estimation of the variability of the net reproductive rate and gross reproductive rate: a case study in *Bactrocera cucurbitae* (Coquillett) (Diptera: Tephritidae). *J Agric Forest.* 2012;61:37–45.
57. Smucker MD, Allan J, Carterette B. A comparison of statistical significance tests for information retrieval evaluation. *Proceedings of the sixteenth ACM conference on Conference on information and knowledge management*; 2007.
58. Xie W, Zhi J, Ye J, Zhou Y, Li C, Liang Y, et al. Age-stage, two-sex life table analysis of *Spodoptera frugiperda* (JE Smith) (Lepidoptera: Noctuidae) reared on maize and kidney bean. *Chem Biol Technol Agric.* 2021;8:1–8.
59. Ning S, Zhang W, Sun Y, Feng J. Development of insect life tables: comparison of two demographic methods of *Delia antiqua* (Diptera: Anthomyiidae) on different hosts. *Sci Rep.* 2017;7:4821.
60. Amir-Maafi M, Chi H. Demography of *Habrobracon hebetor* (Hymenoptera: Braconidae) on two pyralid hosts (Lepidoptera: Pyralidae). *Ann Entomol Soc Am.* 2006;99:84–90.
61. Edillo FE, Tripét F, Touré YT, Lanzaro GC, Dolo G, Taylor CE. Water quality and immatures of the M and S forms of *Anopheles gambiae* ss and *An. arabiensis* in a Malian village. *Malar J.* 2006;5:35.
62. Ndenga BA, Simbauni JA, Mbugi JP, Githeko AK, Fillinger U. Productivity of malaria vectors from different habitat types in the western Kenya highlands. *PLoS ONE.* 2011;6: e19473.
63. Sinka ME, Bangs MJ, Manguin S, Coetzee M, Mbogo CM, Hemingway J, et al. The dominant *Anopheles* vectors of human malaria in Africa, Europe and the Middle East: occurrence data, distribution maps and bionomic précis. *Parasit Vectors.* 2010;3:117.
64. Ossè R, Bangana S, Aikpon R, Kintonou J, Sagbohan H. Adaptation of *Anopheles coluzzii* larvae to polluted breeding sites in Cotonou. A strengthening in urban malaria transmission in Benin. *Vector Biol J.* 2019;4:1.
65. Thakare A, Ghosh C, Alalamath T, Kumar N, Narang H, Whadgar S, et al. The genome trilogy of *Anopheles stephensi*, an urban malaria vector, reveals structure of a locus associated with adaptation to environmental heterogeneity. *Sci Rep.* 2022;12:3610.
66. Mireji P, Keating J, Hassanali A, Mbogo C, Muturi M, Githure J, et al. Biological cost of tolerance to heavy metals in the mosquito *Anopheles gambiae*. *Med Vet Entomol.* 2010;24:101–7.
67. Elkington JS. *Insect population ecology: an African perspective*. Nairobi: ICIPE Science Press; 1993.
68. Rono MK, Muturi CN, Ochieng R, Mwakubabanya R, Wachira FN, Mwangangi J, et al. Cadmium tolerance pathway in *Anopheles gambiae* sensu stricto. *Acta Trop.* 2019;198: 105033.
69. Mireji PO, Keating J, Kenya E, Mbogo C, Nyambaka H, Osir E, et al. Differential induction of proteins in *Anopheles gambiae* sensu stricto (Diptera:

- culicidae) larvae in response to heavy metal selection. *Int J Trop Insect Sci.* 2006;26:214–26.
70. Yurttas H, Alten B, Aytekin A. Variability in natural populations of *Anopheles sacharovi* (Diptera: Culicidae) from southeast Anatolia, revealed by morphometric and allozymic analyses. *J Vector Ecol.* 2005;30:206–12.
 71. Wang R, Hetai S, Shi Y, Wang Z, Xiao Y. Effects of pollution on aquatic ecology and water quality bio-assessment. *Hydrobiologia.* 2014;729:3–15.
 72. Azrag RS, Mohammed BH. *Anopheles arabiensis* in Sudan: a noticeable tolerance to urban polluted larval habitats associated with resistance to Temephos. *Malar J.* 2018;17:204.
 73. Jeanrenaud AC, Brooke BD, Oliver SV. The effects of larval organic fertiliser exposure on the larval development, adult longevity and insecticide tolerance of zoophilic members of the *Anopheles gambiae* complex (Diptera: Culicidae). *PLoS ONE.* 2019;14: e0215552.
 74. Jeanrenaud AC, Brooke BD, Oliver SV. Second generation effects of larval metal pollutant exposure on reproduction, longevity and insecticide tolerance in the major malaria vector *Anopheles arabiensis* (Diptera: Culicidae). *Parasit Vectors.* 2020;13:4.
 75. Ha YR, Yeom E, Ryu J, Lee SJ. Three-dimensional structures of the tracheal systems of *Anopheles sinensis* and *Aedes togoi* pupae. *Sci Rep.* 2017;7:44490.
 76. Fried S, Mackie B, Nothwehr E. Nitrate and phosphate levels positively affect the growth of algae species found in Perry Pond. *Tillers.* 2003;4:21–4.
 77. Walker ED, Olds EJ, Merritt RW. Gut content analysis of mosquito larvae (Diptera: Culicidae) using DAPI stain and epifluorescence microscopy. *J Med Entomol.* 1988;25:551–4.
 78. Merritt R, Dadd R, Walker E. Feeding behavior, natural food, and nutritional relationships of larval mosquitoes. *Annu Rev Entomol.* 1992;37:349–74.
 79. Kaufman MG, Wanja E, Maknoja S, Bayoh MN, Vulule JM, Walker ED. Importance of algal biomass to growth and development of *Anopheles gambiae* larvae. *J Med Entomol.* 2006;43:669–76.
 80. Schofield S, Tepper M, Tuck JJ. Malaria risk assessment and preventive recommendations: a new approach for the Canadian military. *Mil Med.* 2007;172:1250–3.

Publisher's Note

Springer Nature remains neutral with regard to jurisdictional claims in published maps and institutional affiliations.

Ready to submit your research? Choose BMC and benefit from:

- fast, convenient online submission
- thorough peer review by experienced researchers in your field
- rapid publication on acceptance
- support for research data, including large and complex data types
- gold Open Access which fosters wider collaboration and increased citations
- maximum visibility for your research: over 100M website views per year

At BMC, research is always in progress.

Learn more biomedcentral.com/submissions

