



## Cohort Study

# Long-term observational study of renal outcome after preeclampsia: Role of soluble fms-like tyrosine kinase-1 (sFlt-1)/ placental growth factor (PlGF) and endoglin



Thanaphan Thitivichienlert<sup>a</sup>, Chadakarn Phaloprakarn<sup>b</sup>, Thananda Trakarnvanich<sup>a,\*</sup>

<sup>a</sup> Division of Nephrology, Department of Medicine, Faculty of Medicine, Vajira Hospital, Navamindradhiraj University, Bangkok, Thailand

<sup>b</sup> Department of Obstetrics and Gynecology, Faculty of Medicine, Vajira Hospital, Navamindradhiraj University Bangkok, Thailand

## ARTICLE INFO

## Keywords:

Endoglin

Placental growth factor (PlGF)

Preeclampsia

Renal failure

Soluble fms-like tyrosine kinase-1 (sFlt-1)

## ABSTRACT

**Introduction:** Preeclampsia (PE) is an important complication of pregnancy that can lead to chronic kidney disease. Soluble fms-like tyrosine kinase-1 (sFlt-1), placental growth factor (PlGF), the sFlt-1/PlGF ratio and endoglin are biomarkers for the differential diagnosis of PE and other diseases. We aimed to explore the correlation of these biomarkers with long-term renal function, blood pressure and the urine albumin/creatinine ratio (UACR) in PE patients.

**Methods:** 34 patients with PE were enrolled. Blood samples for sFlt-1, PlGF, endoglin and the urine albumin/creatinine ratio (UACR) were collected at the time of PE diagnosis (at 35–40 weeks' gestational age (GA) (87.50% of cases). After delivery, the patients were followed up at three months and one year to assess blood pressure, renal function and the UACR.

**Results:** Thirty-four PE patients were included, and 17 completed the study. The estimated glomerular filtration rate (eGFR) decreased significantly at three months and one year after follow-up ( $128.20 \pm 10.34$  to  $120.75 \pm 10.166$  ml/min/1.73 m<sup>2</sup> ( $p = 0.001$ ) at three months and  $126.71 \pm 9.948$  to  $114.29 \pm 11.274$  ml/min/1.73 m<sup>2</sup> ( $p < 0.001$ ) at one year). The endoglin level correlated significantly with the eGFR level during PE, but there was no correlation of any biomarker with eGFR, blood pressure, or the UACR at one year.

**Conclusion:** Women with PE have a reduction of eGFR at three months and one year after the diagnosis of PE. Only endoglin is correlated with eGFR antepartum; however, it is not correlated with long-term renal function, blood pressure or the UACR.

## 1. Introduction

Preeclampsia (PE) is a considerable obstetric problem and a significant source of long-term cardiovascular problems [1,2]. In general, black women and women with lower socioeconomic status are at increased risk for PE [3,4]. Because low socioeconomic status is a marked risk factor for obesity, metabolic syndrome, hypertension and cardiovascular disease, socioeconomic status is also likely to be associated with maternal hypertension [5]. PE affects approximately 4–8% of pregnancies [6]. Moreover, it has been shown that women with PE have an increased risk of hypertensive disorders and acute kidney injury, though renal function might improve at 6 weeks postpartum. PE has been shown to increase the risk of future chronic kidney disease (CKD)

[7]. McDonald et al. [8] published a systematic review and meta-analysis of 7 cohort studies involving 273 patients with PE. They found a 4-fold increased risk of microalbuminuria. Furthermore, Khashan et al. [9] reported that women with PE have a 5-fold increased risk of end-stage renal disease (ESRD) compared with those without PE.

Soluble fms-like tyrosine kinase 1 (sFlt-1) is a key factor in the pathogenesis of PE and has the most prominent role in the pathology. Circulating levels of sFlt-1 correlate with PE severity, and its high levels lead to widespread maternal vascular endothelial dysfunction and hypertension or proteinuria [10,11]. Endoglin, a coreceptor for transforming growth factor  $\beta$ 1 and  $\beta$ 3, is upregulated in PE [12]. sFlt binds two proangiogenic proteins, namely, placental growth factor (PlGF) and vascular endothelial growth factor (VEGF). The serum levels of free PlGF

\* Corresponding author. Faculty of Medicine, Vajira Hospital, Navamindradhiraj University, Dusit 681 Samsen Road Bangkok, 10300, Thailand.

E-mail address: [thananda@hotmail.com](mailto:thananda@hotmail.com) (T. Trakarnvanich).

URL: <http://ClinicalTrials.Gov> (T. Thitivichienlert).

<https://doi.org/10.1016/j.amsu.2022.103818>

Received 7 April 2022; Received in revised form 12 May 2022; Accepted 14 May 2022

Available online 18 May 2022

2049-0801/© 2022 The Authors. Published by Elsevier Ltd on behalf of IJS Publishing Group Ltd. This is an open access article under the CC BY-NC-ND license (<http://creativecommons.org/licenses/by-nc-nd/4.0/>).

and free VEGF decrease before PE develops [10,13,14]. Urinary PIGF has been explored as another positive screening test for the diagnosis of PE [15], and PIGF levels have been demonstrated to be decreased in PE both in urine and in serum [16–19]. This is most likely due to its binding to circulating sFlt-1, whose levels are elevated [20]. The levels of sFlt-1 begin to rise in the early second trimester and as early as 10–11 weeks of gestation [21,22]. Excess sFlt-1 in patients with PE causes endothelial dysfunction and produces proteinuria, hypertension and kidney damage [20]. In a single study, Katela et al. demonstrated that antepartum sFlt-1 levels correlated with impaired renal function parameters and that a reduced glomerular filtration rate (GFR) persisted up to 6 months postpartum [23]. A significant correlation was found between a high level of serum endoglin and severe PE. A positive correlation was also found between the serum level of soluble endoglin and intrauterine growth retardation (IUGR) [24]. The soluble endoglin level and log-transformed sFlt-1:PIGF ratio tended to track together and were each associated with PE [10].

Although these antiangiogenic factors are reported to be predictive of progression to CKD, there have been no longitudinal studies to specifically examine the effects of these factors on renal function [25]. Moreover, there are still controversies regarding the predictive potential of these biomarkers as biomarkers of progression of renal function [26]. PE patients require long-term follow-up of albuminuria and renal function. The aims of this study were to investigate the relationships of sFlt-1, PIGF and endoglin with long-term renal function, blood pressure and proteinuria in women with PE.

## 2. Materials and methods

This was a prospective observational study conducted at the Department of Medicine and Department of Obstetrics and Gynecology, Faculty of Medicine, Navamindradhiraj University, from October 2019 to December 2020. All the participants provided informed consent, and the study was approved by the local ethics committee (Approval date December 19, 2018, No 177/2561). This work has been reported in accordance with STROCSS 2021 guidelines [27]. Also, it is registered at [ClinicalTrials.Gov](https://clinicaltrials.gov/ct2/show/study/NCT04940260) Identifier: NCT04940260.

The study subjects included 34 pregnant women aged 18 years or higher at 24 or more weeks of gestation, who were diagnosed with PE per the criteria recommended by the American College of Obstetricians and Gynecologists (ACOG) [28] between March 2019 and December 2020. The exclusion criteria were chronic hypertension, CKD according to the KDIGO criteria [29], twin pregnancy, or underlying diabetes mellitus. Of the 34 women enrolled in this trial, 2 patients were excluded for twin pregnancy or a history of diabetes mellitus. Fifteen women were lost to follow-up. The remaining 17 patients completed the study.

### 2.1. Data collection and laboratory measurements

The following baseline demographic and clinical data were recorded: age, GA at which the PE was diagnosed, blood pressure, medication history, and parity. Laboratory data included the complete blood count, blood urea nitrogen (BUN), creatinine, aspartate aminotransferase (AST), alanine aminotransferase (ALT), albumin, alkaline phosphatase, and lactate dehydrogenase (LDH). We also measured 24-h urine protein excretion and calculated the random urine protein-creatinine ratio. The estimated GFR (eGFR) was determined by the CKD Epidemiology Collaboration (CKD-EPI) creatinine equation [30]. Enzyme-linked immunosorbent assays (ELISAs) for human soluble endoglin, sFlt1, and free PIGF were conducted in duplicate (R&D Systems, Minneapolis, MN, USA) following the manufacturer's instructions.

We then calculated the ratio of sFlt-1:PIGF, which is an index of antiangiogenic activity that reflects both increased sFlt-1 and decreased PIGF in women with PE and better predicts its occurrence than either protein alone [31]. We measured the sFlt-1/PIGF ratio and endoglin at the time of PE diagnosis in every patient, mostly at a GA of 35–40 weeks

(87.50% of cases). All the participants were followed up at 3 months and at 1 year. At each follow-up visit, the patient's blood pressure, UACR and serum creatinine were recorded.

### 2.2. Investigation of study outcome

The primary outcome was the ratio of sFlt-1/PIGF together with endoglin and eGFR at 1 year postpartum. Because this was an observational study with infrequent visits, namely, only two visits in one year, we did not record the time to doubling of serum creatinine as an outcome marker. The secondary outcomes were the correlation of these biomarkers with systemic blood pressure and the UACR at 3 and 12 months.

### 2.3. Statistical analysis

Values are expressed as the mean  $\pm$  SD or median (interquartile range) as appropriate unless otherwise indicated. Categorical variables are expressed as percentages. The comparison between eGFR at various time points (0, 3, 12 months) in the same patient was examined with the paired *t*-test. Pearson's correlation coefficient was calculated between individual biomarker proteins, blood pressure, and eGFR at 3 and 12 months. The biomarker level data were stratified into 4 quartiles to examine the correlation between these biomarkers and the UACR by means of the Kruskal-Wallis test. A *p* value less than 0.05 was regarded as representing a statistically significant difference. STATA Software, version 12 (Stata Corp, College Station, TX), was used for all calculations.

## 3. Results

The clinical and biochemical characteristics of the study participants are presented in [Table 1](#). Forty-two patients who were diagnosed with PE were recruited. Eight patients withdrew from the study for personnel reasons. Two were excluded due to twin pregnancy or previous history of diabetic kidney disease with preexisting proteinuria. The remaining 32 patients were included in the study. The mean age was 28.14  $\pm$  6.00 years, and 13 patients (40.6%) were primigravid. The mean gestational

**Table 1**  
Baseline Characteristics of patients.

Baseline characteristic	n	Mean $\pm$ SD, Median (IQR)
Age (years)	32	28.41 $\pm$ 6.50
Primigravid	13	40.63
Parity (weeks)	32	37.34 $\pm$ 2.28
30 - 34	2	6.25
35 - 40	28	87.5
More than 40	2	6.25
Preterm	7	21.88
Systolic blood pressure (mmHg)	32	144.44 $\pm$ 12.61
Diastolic blood pressure (mmHg)	32	90.28 $\pm$ 8.87
BUN (mg/dl)	32	9.16 $\pm$ 4.01
Creatinine (mg/dl)	32	0.58 (0.49–0.66)
Estimate glomerular filtration rate (eGFR)	32	127.00 $\pm$ 11.02
Urine microalbumin (mg/L)	32	69.5 (33.95–185)
Urine creatinine (mg/dL)	32	90.29 (56.83–127.94)
UACR (mg/g)	32	70.8 (41.63–141.8)
Fetal weight (g)	32	2777.03 $\pm$ 407.28
AST (U/L)	32	17 (15–23)
ALT (U/L)	32	17 (12.5–26)
ALP (U/L)	32	139 (128–164)
Albumin (g/dl)	32	2.68 $\pm$ 0.49
Hemoglobin (g/dL)	32	12.55 (11.45–12.85)
White blood cell count (/uL)	32	10070 (8245–12230)
Platelet count (/uL)	32	246000 (217500–269500)
LDH (u/l)	32	173 (156.5–188)

BUN; blood urea nitrogen, UACR; urine albumin/creatinine ratio; AST; aspartate aminotransferase, ALT; alanine aminotransferase ALP; alkaline phosphatase, LDH; lactate dehydrogenase.

age was  $37.23 \pm 2.28$  months (range 35–40 weeks). The mean systolic and diastolic blood pressures were  $144.44 \pm 12.61$  mmHg and  $90.28 \pm 8.87$  mmHg, respectively. The median UACR at the diagnosis point of PE was 70.8 (41.63–141.8) mg/g creatinine. The mean fetal weight was  $2777.03 \pm 407.20$  g. The UACR values were above 20 mg/g creatinine in 30 (93.75%) of the participants. The renal function tests were within normal limits: the median creatinine level was 0.58 mg/dl (0.49–0.66), and the mean eGFR value was  $127.00 \pm 11.02$  mL/min/1.73 m<sup>2</sup>. The CBC and liver function tests of all participants, except one who had severe PE with hemolysis, elevated liver enzymes and low platelet count (HELLP syndrome), were within the normal ranges. In total, 20 participants were followed up at 3 months, but only 17 patients remained in the study at 12 months. The reason was that almost all of them returned to their hometown in rural areas and due to COVID-19 pandemic with caused travel restriction in our country.

3.1. Biomarker levels

3.1.1. Endoglin

Among all 32 participants, the mean serum endoglin was  $47.84 \pm 26.02$  ng/ml (95% CI, 38.46 to 57.22). After stratifying serum endoglin into quartiles, we found that the serum endoglin level was significantly negatively correlated with eGFR at the time of the PE diagnosis ( $p = 0.003$ ) but did not show a correlation at any other time point. Serum endoglin did not show any correlation with UACR at any time point (Figs. 1 and 2).

3.1.2. Changes in renal function, UACR and blood pressure

During the 12-month follow-up period, eGFR declined significantly from baseline (Table 2). At the end of 12 months, eGFR dropped from  $126.71 \pm 9.94$  mL/min/1.73 m<sup>2</sup> to  $114.29 \pm 11.29$  mL/min/1.73 m<sup>2</sup> ( $p < 0.001$ ). At 3 months after the diagnosis of PE, eGFR significantly decreased from  $128.20 \pm 10.34$  mL/min/1.73 m<sup>2</sup> to  $120.75 \pm 10.6$  mL/min/1.73 m<sup>2</sup> ( $p < 0.001$ ). Only 8 patients still had UACR above 20 mg/g creatinine at 3 months (Table 3), whereas 6 patients (35.29%) had persistent albuminuria above 20 mg/g at 1 year. At 3 months, 3 patients had blood pressure greater than 140/90 mmHg (15%) and remained hypertensive at the end of 12 months. Of note, one patient in this group also had persistent albuminuria, while 14 in 17 patients at one year (82.35%) were normotensive and 11 patients (64.71%) were normoalbuminuric. At one year, one of the remaining 17 patients (5.88%) still had both albuminuria and hypertension. There was no correlation between biomarker levels and blood pressure at baseline. However, the sFlt-1 and sFlt-1/PIGF ratio had negative correlation with diastolic blood pressure at 3 months ( $p = 0.008$  and  $p = 0.002$  respectively)

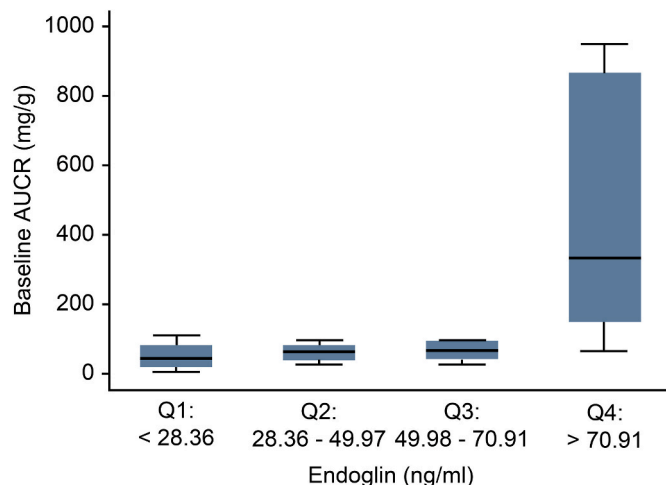


Fig. 1. Correlation of serum endoglin with UACR at baseline.

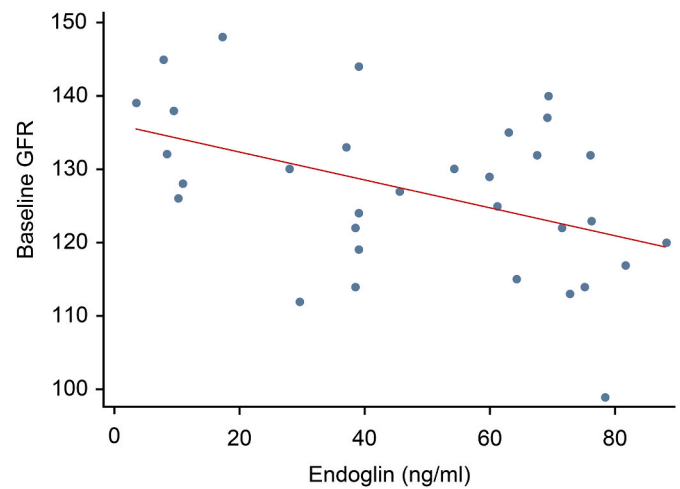


Fig. 2. Correlation of serum endoglin with baseline eGFR.

Table 2  
Changes in eGFR from baseline to 3 months and 1 year.

	3 month (n = 20)		p-value	1 year (n = 17)		p-value
	Baseline Mean $\pm$ SD	3 month Mean $\pm$ SD		Baseline Mean $\pm$ SD	1 year Mean $\pm$ SD	
eGFR	128.20 $\pm$ 10.34	120.75 $\pm$ 10.16	0.001	126.71 $\pm$ 9.94	114.29 $\pm$ 11.27	<0.001

The baseline eGFR at each time point denoted the value of the remaining patients at that time.

Table 3  
Follow-up blood pressure and UACR from baseline to 3 and 6 months.

	Baseline	3 month	1 year
	n (%)	n (%)	n (%)
<b>Blood pressure (mmHg)</b>	32 (100)	20	17
<140/90		17 (85.00)	14 (82.35)
$\geq 140/90$		3 (15.00)	3 (17.65)
<b>UACR (mg/g)</b>	32 (100)	20 (100)	17 (100)
$\leq 20$	2 (6.25)	12 (60.00)	11 (64.71)
$> 20$	30 (93.75)	8 (40.00)	6 (35.29)
<b>Blood pressure and UACR</b>	32 (100)	20	17
BP < 140/90 and UACR $\leq 20$		18 (90.00)	16 (94.12)
BP $\geq 140/90$ and UACR $> 20$		2 (10.00)	1 (5.88)

UACR; urine albumin/creatinine ratio, BP; blood pressure.

(Table 4).

3.1.3. sFlt1/PIGF ratios

The median sFlt-1 level was 3096.35 pg/mL (range 2271.51–3978.48 pg/mL), while the PIGF level was 219.58 pg/mL (range 767.08–373.04 pg/mL). The sFlt-1/PIGF ratio was  $15.70 \pm 9.01$  (95% CI, 12.46–18.95) (Table 5). When the sFlt-1/PIGF ratios were classified into 4 quartiles, they did not show any correlation with the UACR or eGFR (Figs. 3 and 4). Each of the following quartiles comprised 25% of the patients in the study: a sFlt1/PIGF ratio below 9.14 (Q1), within 9.14–15.28 (Q2), within 15.29–22.85 (Q3) or above 22.85 (Q4). As the sFlt-1/PIGF ratio increased from quartiles 1 to 3, the UACR tended to rise but did not reach statistical significance (Fig. 3).

4. Discussion

In this study, the majority of PE patients were diagnosed from 35 to 40 weeks (87.50%), and most of them had near-term or term deliveries,

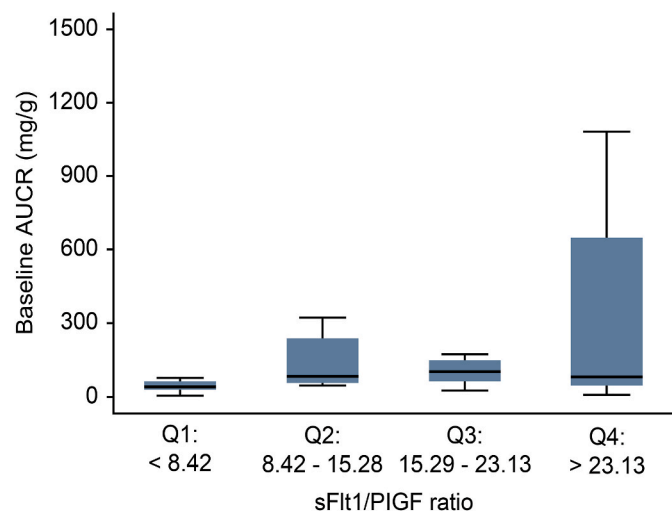
**Table 4**  
Correlation between blood pressure and biomarkers at different time point.

	Baseline			At 3 mo			At 1 yr		
	n	r	p-value	n	r	p-value	n	r	p-value
<b>systolic (mmHg)</b>									
sFlt-1 (pg/ml)	32	-0.078	0.67	20	0.086	0.719	17	0.040	0.880
PlGF (pg/ml)	32	0.106	0.564	20	-0.158	0.504	17	0.190	0.466
sFlt-1/PlGF	32	-0.169	0.355	20	0.069	0.771	17	-0.264	0.307
Endoglin (ng/ml)	32	-0.269	0.136	20	0.056	0.814	17	-0.263	0.308
<b>diastolic (mmHg)</b>									
sFlt-1 (pg/ml)	32	-0.070	0.704	20	-0.576	0.008	17	-0.170	0.515
PlGF (pg/ml)	32	0.017	0.928	20	0.173	0.465	17	-0.154	0.556
sFlt-1/PlGF	32	-0.116	0.526	20	-0.646	0.002	17	-0.085	0.746
Endoglin (ng/ml)	32	0.016	0.932	20	-0.299	0.201	17	-0.429	0.086

Pearson Correlation Coefficient Significant if  $p < 0.05$  sFlt-1; soluble fms-like tyrosine kinase-1, PlGF; placental growth factor.

**Table 5**  
Mean and median sFlt-1, PlGF, sFlt-1/PlGF and endoglin levels.

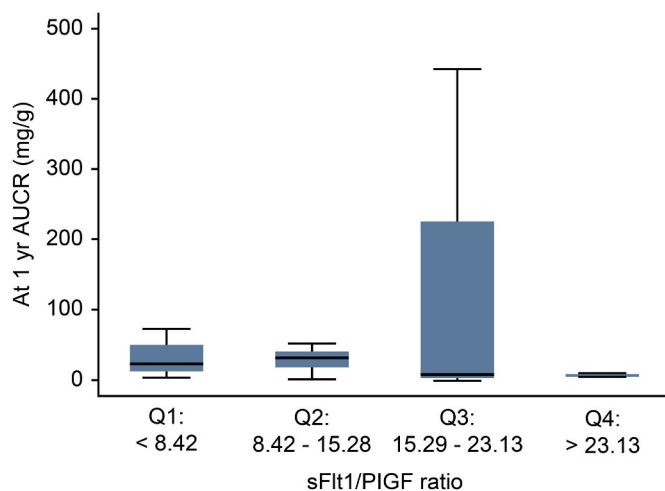
Measurement	n	Mean ± SD	95%CI	Median (IQR)
sFlt-1 (pg/ml)	32	-	-	3096.35 (2271.56–3978.44)
PlGF (pg/ml)	32	-	-	219.58 (167.08–373.04)
sFlt-1/PlGF	32	15.70 ± 9.01	12.46–18.95	-
Endoglin (ng/ml)	32	47.84 ± 26.02	38.46–57.22	-



**Fig. 3.** sFlt-1/PlGF ratio divided into 4 quartiles plotted against the UACR at baseline and one year.

with only 7 cases delivering before 37 weeks. This indicated that their preeclamptic symptoms were mild or moderate in severity. The mean systolic and diastolic values of the patients in this study were in the moderate range of hypertension. The endoglin and sFlt-1 levels observed in our preeclamptic pregnancies were higher than the levels found in normal pregnancies (9.8–17.8 ng/ml for endoglin and 1130–1500 pg/mL for sFlt-1) as reported by other authors [15,31,32]. Also, the sFlt-1/PlGF ratio observed in preeclamptic pregnant women in this study was above 10, which was the cutoff level suggesting PE [33].

Our findings are consistent with the notion that these biomarker changes are a consequence of PE, making these indicators a prognostic factor for developing impaired kidney function in the long term. As PE is a generalized endothelial dysfunction syndrome that leads to hypertension, glomerular endotheliosis results in proteinuria and



**Fig. 4.** Correlation between serum endoglin and eGFR at baseline and one year.

coagulopathy seen in the maternal syndrome of PE. The anti-angiogenic states from excessive levels of circulating anti-endothelial factors produced by the diseased placenta, such as sFlt-1 and endoglin, can cause generalized endothelial dysfunction. The consequences of endothelial dysfunction in PE are progressive proteinuria and CKD [26]. A Taiwanese study compared 26,651 women who experienced hypertensive disorders during pregnancy compared with 213,397 women with normal pregnancies. They found that women with high blood pressure had a 5.38-fold increased risk of CKD and a 12.4-fold increased risk of ESRD [34]. In a meta-analysis, McDonald et al. [8] included 7 cohort studies involving 273 patients with preeclampsia and 333 uncomplicated pregnancies. They showed that at 7.1 years postpartum, women who had PE developed microalbuminuria 4.31 times as often as women with uncomplicated pregnancies (31% vs. 7%). In line with the findings of McDonald et al., we found a reduction in eGFR at 12 months postpartum in women with PE. The levels of sFlt-1 and endoglin were moderately elevated in our study, and serum endoglin was the only marker to negatively correlate with eGFR at the time of the PE diagnosis. This is in agreement with a previous study by Cui et al. [35] who found that serum endoglin in 172 pregnant women including 110 subjects with preeclampsia and 62 normotensive pregnancies correlated with the occurrence and severity of PE. Serum creatinine was found to be significantly correlated with PE. We did not find the correlation between blood pressure and biomarkers except at 3 months postpartum, when we found that the diastolic blood pressure negatively correlated with sFlt-1 and sFlt-1/PlGF ratio. The mean blood pressure was also observed to be lowest at 3 months postpartum. This could be because of the



continuation of hypertensive medications among these women.

It has been reported that serum endoglin increases at early stages of atherogenesis due to damage to endothelial cells [36]. Endoglin expression has been associated with plaque neoangiogenesis, collagen production and atherosclerotic lesion stabilization [37]. Serum endoglin has been shown to have profibrotic effects in kidney disease [38]. Our study showed that endoglin had a correlation with eGFR only at the time of the PE diagnosis, since these biomarkers returned to normal post-partum. The sFlt1/PlGF ratio had no correlation with long-term renal function in our study. In contrast to sFlt-1, soluble endoglin does not interfere with VEGF-A signaling in endothelial cells but does inhibit TGF- $\beta$  signaling, leading to decreased endothelial nitric oxide synthase activity and vasoconstriction in isolated rat blood vessels [12]. Since TGF- $\beta$  plays a central role in renal fibrosis, endoglin should have a pivotal role in CKD progression.

Our study has several limitations. First, we did not have a control group. We used only the cutoff levels previously reported from other trials, which led to concordant results. Second, the sample size was small and decreased in size even more before completion of the study, with only 17 patients remaining in the end. This was due to the remote area of the patients' residences, so they were reluctant to attend follow-up visits. Third, we did not repeat the biomarker measurements again at the end of the study. Thus, trials with larger sample sizes are warranted.

In conclusion, the sFlt-1/PlGF ratio and endoglin were elevated at the time of the PE diagnosis but did not correlate with long-term renal function or blood pressure. Endoglin was correlated with eGFR at the time of diagnosis. Hypertension and albuminuria were resolved in the majority of PE cases. Nevertheless, kidney function declined in these cases. Therefore, PE has a meaningful effect on long-term renal function. The present study provides a good framework for future study to explore the new biomarkers to better correlate with kidney outcomes.

## Statements

This article has been presented as poster at 19th Asian Pacific Congress of Nephrology in August 2021 [39].

## Statement of ethics

This study was approved by the Ethics Committee of the Faculty of Medicine, Vajira Hospital, Navamindradhiraj University. (COA 177/2561), and this research was conducted ethically in accordance with the World Medical Association Declaration of Helsinki. Written informed consent was obtained from all participants.

## Funding sources

This work was supported by grant no. 52/2562 from Navamin-dradhiraj University research fund.

## Author contributions

T. Thitvichienlert recruited and followed up the patients, interpreted the data and wrote the manuscript. T. Trakarnvanich conceived the study and wrote the manuscript. C. Phaloprakan analyzed the data and conducted the statistical analysis.

## Registration of research studies

- 1 Name of the registry: <http://ClinicalTrials.Gov>
- 2 ClinicalTrials.Gov Identifier: NCT04940260
- 3 Hyperlink to the registration: <https://register.clinicaltrials.gov/prs/app/action/SelectProtocol?sid=S000B2CY&selectaction=Edit&uid=U0000VTF&ts=2&cx=-emjiny>

## Data availability statement

All data generated and/or analyzed in this study are included in this published article.

## Provenance and peer review

Not commissioned, externally peer-reviewed.

## Declaration of competing interest

None of the authors have declared any competing financial interests.

## Acknowledgments

The authors thank the obstetrics and gynecology nurses and staff for their help in recruiting patients and obtaining the samples and Ms Worachane Imjaijit for her assistance with statistical analyses.

## Appendix A. Supplementary data

Supplementary data to this article can be found online at <https://doi.org/10.1016/j.amsu.2022.103818>.

## References

- [1] L. Bellamy, J.-P. Casas, A.D. Hingorani, D.J. Williams, Pre-eclampsia and risk of cardiovascular disease and cancer in later life: systematic review and meta-analysis, *BMJ* 335 (2007) 974.
- [2] L.A. Magee, P. von Dadelszen, Pre-eclampsia and increased cardiovascular risk, *BMJ* 335 (2007) 945–946.
- [3] E.A. Steegers, P. von Dadelszen, J.J. Duvekot, R. Pijnenborg, Pre-eclampsia, *Lancet* 376 (2010 Aug 21) 631–644.
- [4] L.M. Silva, M. Coolman, E.A. Steegers, V.W. Jaddoe, H.A. Moll, A. Hofman, J. P. Mackenbach, H. Raat, Low socioeconomic status is a risk factor for preeclampsia: the Generation R Study, *J. Hypertens.* 26 (2008) 1200–1208.
- [5] L. Silva, M. Coolman, E. Steegers, V. Jaddoe, H. Moll, A. Hofman, J. Mackenbach, H. Raat, Maternal educational level and risk of gestational hypertension: the Generation R Study, *J. Hum. Hypertens.* 22 (2008) 483–492.
- [6] C.B. Rudra, M.A. Williams, Monthly variation in preeclampsia prevalence: Washington state, 1987–2001, *J. Matern. Fetal Neonatal Med.* 18 (2005) 319–324.
- [7] B.E. Vikse, L.M. Irgens, T. Leivestad, R. Skjaerven, B.M. Iversen, Preeclampsia and the risk of end-stage renal disease, *N. Engl. J. Med.* 359 (2008) 800–809.
- [8] S.D. McDonald, Z. Han, M.W. Walsh, H.C. Gerstein, P.J. Devereaux, Kidney disease after preeclampsia: a systematic review and meta-analysis, *Am. J. Kidney Dis.* 55 (2010) 1026–1039.
- [9] A.S. Khashan, M. Evans, M. Kublickas, F.P. McCarthy, L.C. Kenny, P. Stenvinkel, et al., Preeclampsia and risk of end stage kidney disease: a Swedish nationwide cohort study, *PLoS Med.* 16 (2019), e1002875.
- [10] R.J. Levine, S.E. Maynard, C. Qian, K.-H. Lim, L.J. England, K.F. Yu, et al., Circulating angiogenic factors and the risk of preeclampsia, *N. Engl. J. Med.* 350 (2004) 672–683.
- [11] T. Chaiworapongsa, R. Romero, Y.M. Kim, G.J. Kim, M.R. Kim, J. Espinoza, et al., Plasma soluble vascular endothelial growth factor receptor-1 concentration is elevated prior to the clinical diagnosis of pre-eclampsia, *J. Matern. Fetal Neonatal Med.* 17 (2005) 3–18.
- [12] S. Venkatesha, M. Toporsian, C. Lam, J.I. Hanai, T. Mammoto, Y.M. Kim, et al., Soluble endoglin contributes to the pathogenesis of preeclampsia, *Nat. Med.* 12 (2006) 642–649.
- [13] R.N. Taylor, J. Grimwood, R.S. Taylor, M.T. McMaster, S.J. Fisher, R.A. North, Longitudinal serum concentrations of placental growth factor: evidence for abnormal placental angiogenesis in pathologic pregnancies, *Am. J. Obstet. Gynecol.* 188 (2003) 177–182.
- [14] S.C. Tidwell, H.N. Ho, W.H. Chiu, R.J. Torry, D.S. Torry, Low maternal serum levels of placenta growth factor as an antecedent of clinical preeclampsia, *Am. J. Obstet. Gynecol.* 184 (2001) 1267–1272.
- [15] C. Lam, K.H. Lim, S.A. Karumanchi, Circulating angiogenic factors in the pathogenesis and prediction of preeclampsia, *Hypertension* 46 (2005) 1077–1085.
- [16] D.S. Torry, D. Mukherjee, J. Arroyo, R.J. Torry, Expression and function of placenta growth factor: implications for abnormal placentation, *J. Soc. Gynecol. Invest.* 10 (2003) 178–188.
- [17] D.S. Torry, H.S. Wang, T.H. Wang, M.R. Caudle, R.J. Torry, Preeclampsia is associated with reduced serum levels of placenta growth factor, *Am. J. Obstet. Gynecol.* 179 (1998) 1539–1544.
- [18] R.N. Taylor, J. Grimwood, R.S. Taylor, M.T. McMaster, S.J. Fisher, R.A. North, Longitudinal serum concentrations of placental growth factor: evidence for abnormal placental angiogenesis in pathologic pregnancies, *Am. J. Obstet. Gynecol.* 188 (2003) 177–182.

- [19] A. Reuvekamp, F.V. Velsing-Aarts, I.E. Poulina, J.J. Capello, A.J. Duits, Selective deficit of angiogenic growth factors characterises pregnancies complicated by pre-eclampsia, *Br J Obstet Gynecol* 106 (1999) 1019–1022.
- [20] S.E. Maynard, J.Y. Min, J. Merchan, K.H. Lim, J. Li, S. Mondal, et al., Excess placental soluble fms-like tyrosine kinase 1 (sFlt1) may contribute to endothelial dysfunction, hypertension, and proteinuria in preeclampsia, *J. Clin. Invest.* 111 (2003) 649–658.
- [21] N.A. Bersinger, R.A. Odegard, Second- and third-trimester serum levels of placental proteins in preeclampsia and small-for-gestational age pregnancies, *Acta Obstet. Gynecol. Scand.* 83 (2004) 37–45.
- [22] L.C. Chappell, P.T. Seed, A. Briley, F.J. Kelly, B.J. Hunt, D.S. Charnock-Jones, A. I. Mallet, L. Poston, A longitudinal study of biochemical variables in women at risk of preeclampsia, *Am. J. Obstet. Gynecol.* 187 (2002) 127–136.
- [23] T. Kaleta, A. Stock, D. Panayotopoulos, O. Vonend, D. Niederacher, M. Neumann, T. Fehm, W. Kaisers, M. Fleisch, Predictors of impaired postpartum renal function in women after preeclampsia: results of a prospective single center study, *Dis. Markers* 2016 (2016) 7861919, <https://doi.org/10.1155/2016/7861919>.
- [24] T. El-Dayem, A. Elagwan, M. Khamis, E. Kamha, A. Hassan, Correlation of serum soluble endoglin to the severity of pre-eclampsia and its effect on the pregnancy outcome, *Int J Reprod Contracept Obstet Gynecol* 5 (5) (2016) 1593–1600.
- [25] K. Tanabe, Y. Sato, J. Wada, Endogenous antiangiogenic factors in chronic kidney disease: potential biomarkers of progression, *Int. J. Mol. Sci.* 19 (2018) 1859, <https://doi.org/10.3390/ijms19071859>.
- [26] V. van Balen, J. Spaan, T. Cornelis, M. Spaanderman, Prevalence of chronic kidney disease after preeclampsia, *J. Nephrol.* 30 (2017) 403–409, <https://doi.org/10.1007/s40620-016-0342-1>.
- [27] G. Mathew, R. Agha, for the STROCCS Group, Strocscs 2021: strengthening the Reporting of cohort, cross-sectional and case-control studies in Surgery, *Int. J. Surg.* 96 (2021) 106165.
- [28] Hypertension in pregnancy. Report of the American College of Obstetricians and Gynecologists' task force on hypertension in pregnancy, *Obstet. Gynecol.* 122 (5) (2013) 1122–1131.
- [29] L.A. Inker, B.C. Astor, C.H. Fox, T. Isakova, J.P. Lash, C.A. Peralta, et al., KDOQI US commentary on the 2012 KDIGO clinical practice guideline for the evaluation and management of CKD, *Am. J. Kidney Dis.* 63 (2014) 713–735.
- [30] A.S. Levey, L.A. Stevens, C.H. Schmid, Y. Zhang, A.F. Castro, H.I. Feldman, et al., A new equation to estimate glomerular filtration rate, *Ann. Intern. Med.* 150 (2009) 604–612.
- [31] R.J. Levine, C. Lam, C. Qian, K.F. Yu, S.E. Maynard, B.P. Sachs, B.M. Sibai, F. H. Epstein, R. Romero, R. Thadhani, S.A. Karumanchi, CPEP Study Group, Soluble endoglin and other circulating antiangiogenic factors in preeclampsia, *N. Engl. J. Med.* 355 (10) (2006) 992–1005.
- [32] A. Leñaos-Miranda, C.S. Navarro-Romero, L.J. Sillas-Pardo, K.L. Ramírez-Valenzuela, I. Isordia-Salas, L.M. Jiménez-Trejo, Soluble endoglin as a marker for preeclampsia, its severity, and the occurrence of adverse outcomes, *Hypertension* 74 (4) (2019) 991–997.
- [33] C. Hirashima, A. Ohkuchi, F. Arai, K. Takahashi, H. Suzuki, T. Watanabe, K. Kario, S. Matsubara, M. Suzuki, Establishing reference values for both total soluble Fms-like tyrosine kinase 1 and free placental growth factor in pregnant women, *Hypertens. Res.* 28 (9) (2005) 727–732.
- [34] I.K. Wang, C.H. Muo, Y.C. Chang, C.C. Liang, C.T. Chang, S.Y. Lin, et al., Association between hypertensive disorders during pregnancy and end-stage renal disease: a population-based study, *CMAJ (Can. Med. Assoc. J.)* 185 (2013) 207–213.
- [35] L. Cui, C. Shu, Z. Liu, W. Tong, M. Cui, C. Wei, et al., Serum protein marker panel for predicting preeclampsia, *Pregnancy Hypertens* 14 (2018) 279–285.
- [36] C.G. Li, H. Bethell, P.B. Wilson, D. Bhatnagar, M.G. Walker, S. Kumar, The significance of CD105, TGF $\beta$  and CD105/TGF $\beta$  complexes in coronary artery disease, *Atherosclerosis* 152 (2000) 249–256.
- [37] P. Nachtigal, L. Zemankova, J. Rathouska, Z. Strasky, The role of endoglin in atherosclerosis, *Atherosclerosis* 224 (2012) 4–11.
- [38] K. Tanabe, Y. Sato, J. Wada, Endogenous antiangiogenic factors in chronic kidney disease: potential biomarkers of progression, *Int. J. Mol. Sci.* 19 (2018 Oct) 1859.
- [39] Poster presentations P 020, *Nephrology* 21 (suppl1) (2021) 32–55.