

Is the contemporary care of the older persons with acute coronary syndrome evidence-based?

Greg B. Mills^{1,†}, Hanna Ratcovich^{1,2,†}, Jennifer Adams-Hall³, Benjamin Beska^{1,3}, Emma Kirkup³, Daniell E. Raharjo^{1,4}, Murugapathy Veerasamy⁵, Chris Wilkinson^{3,6}, and Vijay Kunadian  ^{1,3,*}

¹Translational and Clinical Research Institute, Faculty of Medical Sciences, Newcastle University, 4th Floor William Leech Building, Newcastle upon Tyne NE2 4HH, UK; ²University of Copenhagen, Copenhagen, Denmark; ³Cardiothoracic Centre, Royal Victoria Infirmary/Freeman Hospital, Newcastle upon Tyne Hospitals NHS Foundation Trust, Newcastle upon Tyne, UK; ⁴Faculty of Medicine, Universitas Indonesia, Central Jakarta, Indonesia; ⁵Leeds General Infirmary, Leeds Teaching Hospitals NHS Trust and Leeds Institute of Cardiovascular and Metabolic Medicine, University of Leeds, Leeds, UK; and ⁶Population Health Sciences Institute, Faculty of Medical Sciences, Newcastle University, Newcastle upon Tyne, UK

Received 21 October 2021; revised 17 November 2021; editorial decision 13 December 2021; accepted 14 December 2021

Handling Editor: Maciej Banach

Globally, ischaemic heart disease is the leading cause of death, with a higher mortality burden amongst older adults. Although advancing age is associated with a higher risk of adverse outcomes following acute coronary syndrome (ACS), older patients are less likely to receive evidence-based medications and coronary angiography. Guideline recommendations for managing ACS are often based on studies that exclude older patients, and more contemporary trials have been underpowered and produced inconsistent findings. There is also limited evidence for how frailty and comorbidity should influence management decisions. This review focuses on the current evidence base for the medical and percutaneous management of ACS in older patients and highlights the distinct need to enrol older patients with ACS into well-powered, large-scale randomized trials.

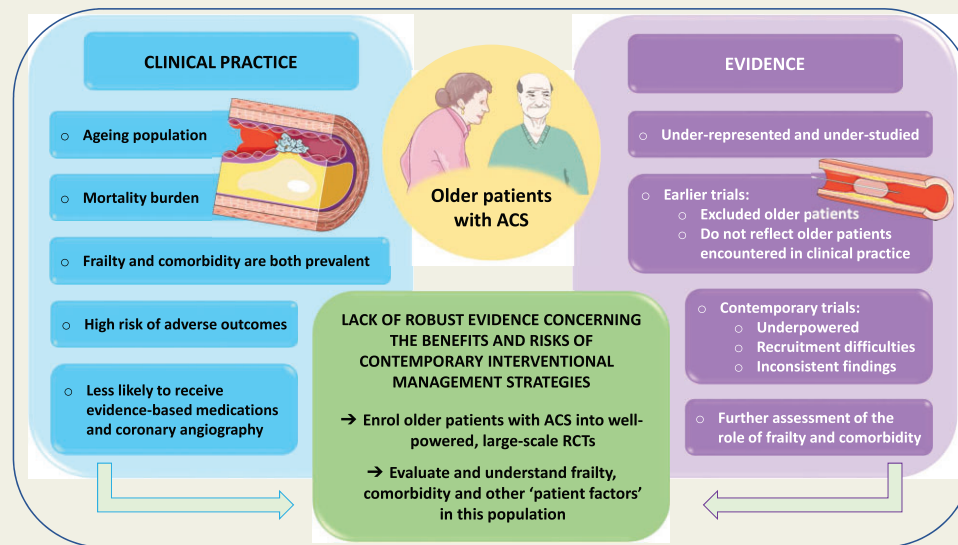
* Corresponding author. Tel: 0044 191 2085797, Email: vijay.kunadian@newcastle.ac.uk

[†]These authors contributed equally to this study.

© The Author(s) 2021. Published by Oxford University Press on behalf of the European Society of Cardiology.

This is an Open Access article distributed under the terms of the Creative Commons Attribution-NonCommercial License (<https://creativecommons.org/licenses/by-nc/4.0/>), which permits non-commercial re-use, distribution, and reproduction in any medium, provided the original work is properly cited. For commercial re-use, please contact journals.permissions@oup.com

Graphical Abstract



Keywords

Myocardial infarction • Acute coronary syndrome • Older adults • Coronary angiography • Percutaneous intervention

Introduction

Ischaemic heart disease is the leading cause of death worldwide, with older adults experiencing a higher mortality burden.¹ Between 2015 and 2050, the proportion of the world's population aged >60 years is set to nearly double to 22%.² Non-ST-elevation acute coronary syndrome (NSTEMACS) is the main acute coronary syndrome (ACS) subtype in older adults aged >75 years.³ Clinical characteristics of the older adult population are heterogeneous with frailty, comorbidity, cognitive function, and health-related quality of life (HRQoL) playing important roles in guiding clinical care and as predictors of adverse outcomes. There is, however, a lack of specific pharmacological and invasive treatment guidelines for older patients. This is due to historical under-representation of older patients with ACS in clinical trials.⁴ This review focuses on the current evidence base for the medical and percutaneous management of ACS in older patients.

Characteristics of older adults with acute coronary syndrome

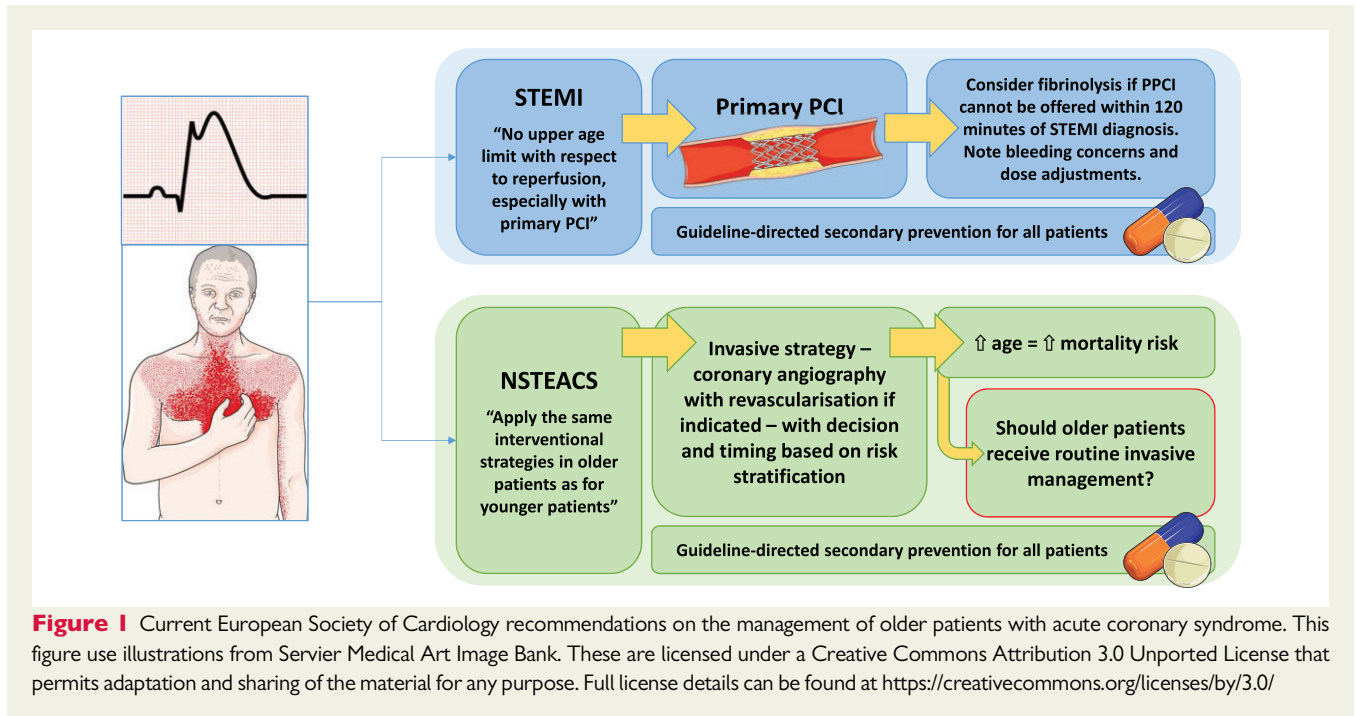
The symptom characteristics in older patients with ACS are often different compared with younger patients.⁴ Chest pain is not the predominant symptom whereas dyspnoea (49.3%), diaphoresis (26.2%), nausea or vomiting (24.3%), and pre-syncope or syncope (19.1%) are more common.^{5,6} Worryingly, an 'atypical' presentation of ACS is associated with adverse outcomes.⁶ When correctly diagnosed, older patients with ACS are less likely to receive evidence-based

medications and coronary angiography (CAG), which may contribute to an excess mortality.⁷ The knowledge of the higher risk of complications to both invasive and medical treatment with increasing age can probably be a part of the explanation.⁸ Current clinical practice recommendations based on the existing sparse evidence for management of older patients with ACS are summarized in [Figure 1](#).

Frailty

Frailty is common in older people, particularly in those with cardiovascular disease,^{9,10} and it is associated with adverse outcomes.¹¹ These factors may affect any benefit derived from an invasive approach.¹² Frailty is defined as a 'state of increased vulnerability to poor resolution of homeostasis following stress, which increases the risk of adverse outcomes including falls, delirium and disability', as well as major adverse cardiac events (MACE).^{13,14} Frailty assessment tools focus on either phenotype or cumulative deficit models with physicians' scaled judgement of activity, comorbidity, and dependency.¹⁵

Frail adults presenting with NSTEMACS have more procedurally challenging angiographic characteristics, independent of age.^{16,17} In age- and sex-adjusted logistic regression analysis, frailty is associated with severe culprit lesion calcification [odds ratio (OR) 5.13, 95% confidence interval (CI) 1.59–16.5, $P=0.006$]. Frail patients had a 2.67 increased odds of being within the highest SYNTAX tertile compared with robust patients and a greater presence of high-risk lesions on virtual history intravascular ultrasound imaging, with a 2.81 increased adjusted odds (95% CI 1.06–7.48, $P=0.039$) of presence of thin-cap fibroatheroma,



independent of age.¹⁶ Frailty predicts an increase in composite of all-cause mortality, myocardial infarction (MI), stroke, unplanned revascularization, and major bleeding at 1 year among older patients with NSTEMACS receiving CAG.¹³ Importantly, older NSTEMACS adults with frailty have poor HRQoL at baseline. One year following invasive management, modest improvements in HRQoL were most marked in frail and pre-frail patients who received a proportionally larger benefit than robust patients.¹⁸

Comorbidity

The number and severity of comorbidities are inversely related to rates of CAG and percutaneous coronary intervention (PCI) in patients with ACS.¹⁹ Comorbidity burden, as measured by the Charlson Comorbidity Index, predicts in-hospital and 1-year mortality in patients with ACS and is independently associated with adverse short- and long-term outcomes after PCI.²⁰ However, a recent study showed that an invasive strategy yielded a significant prognostic benefit in terms of the reduced composite endpoint of death or non-fatal MI at 16 months in patients with the greatest comorbidity burden.²¹

Cognitive impairment

Rates of CAG and revascularization are lower in older patients with ACS and cognitive impairment compared with those with normal cognitive function, whilst cognitive impairment is associated with in-hospital mortality and death at 6 months.²² Undiagnosed cognitive impairment is also common in older patients with NSTEMACS receiving CAG and these patients are more likely to experience adverse events at 1 year.²³ However, any potential differential prognostic benefit of invasive care according to cognitive status in ACS patients has not been investigated.

Functional decline

Decline in functional status, assessed with either HRQoL or needing assistance with activities of daily living (ADLs), is associated with all-cause mortality at 18 months.²⁴ Observational data have shown that the risk of functional decline in ADLs or HRQoL is lower in older patients with MI receiving revascularization compared with those receiving medical management.²⁵ However, selection bias limits interpretation of these findings and trial data has shown no clinically significant differences in HRQoL at 1 year between older patients with NSTEMACS randomized to an invasive strategy compared with a conservative approach.²⁶

ST-elevation myocardial infarction in older adults

Older patients with ST-elevation MI (STEMI) are more likely to experience delays between symptom onset and hospital admission due to the atypical presentation and delays in seeking help.²⁷ When hospitalized, they are less likely to receive reperfusion therapies compared with younger patients, even in those without contraindications.²⁸

Evidence on the management of ST-elevation myocardial infarction in older adults

Observational studies

In observational studies regarding the use of primary PCI (PPCI) vs. thrombolysis in older STEMI patients, most favours PPCI.^{29,30} A comparison of selected observational studies in older patients with STEMI is summarized in [Supplementary material online, S1](#). The

Global Registry of Acute Coronary Events (GRACE) study conducted >20 years ago ($n = 1134$, median age 76 years, female 40.2%) showed improved in-hospital outcomes associated with PPCI vs. thrombolysis, with lower rates of death (adjusted OR 0.62; 95% CI 0.39–0.96; $P = 0.03$) and re-infarction (OR 0.15; 95% CI 0.05–0.44; $P < 0.001$).²⁹ The Acute Myocardial Infarction in Switzerland (AMIS) study ($n = 6877$, mean age 79 years, female 39.7%) showed an increasing use of PPCI over time amongst older adults, which was translated into a significant reduction in MACE and in-hospital mortality.³¹ Interestingly, an analysis from the UK Myocardial Ischaemia National Audit Project (MINAP) database ($n = 68\ 025$, mean age 69 years, female 33.6%) showed that all-cause mortality benefits associated with reperfusion strategies in comparison to conservative approaches were attenuated with advancing age.⁷

Randomised controlled trials

Randomized clinical trials (RCTs) primarily focussing on older adults published to date have generally shown the benefits of PPCI over thrombolysis in STEMI patients, albeit in the context of underpowered studies affected by slow enrolment, particularly when recruiting patients >80 years. de Boer *et al.*³² randomized 87 patients with STEMI aged ≥ 75 years to PPCI or thrombolysis and showed a reduced risk of death, re-infarction or stroke at 1 year in patients managed with PPCI. The study had small sample size, but results indicate that PPCI is likely to be safe in the older population. In the largest RCT in older STEMI patients, Senior Primary Angioplasty in Myocardial Infarction Study (SENIOR-PAMI), recruiting 483 patients ≥ 70 years (mean age 78 years, female 41%) receiving PPCI vs. thrombolysis, no difference was seen in the rates of primary composite endpoint of death or stroke at 30 days. Although the secondary composite endpoint of death, stroke, or re-infarction occurred less frequently in the PPCI group, driven by reduced rates of re-infarction

at 30 days.³³ Unfortunately, the study was discontinued due to slow patient recruitment and therefore definitive conclusions cannot be drawn in the >80-year olds. RCTs in older patients with STEMI are summarized in [Figure 2](#).

Meta-analyses

In a meta-analysis by de Boer *et al.*,³⁴ comparing PPCI and fibrinolysis, patients aged 70–80 years randomized to PPCI had reduced all-cause mortality, re-infarction, stroke, and a composite of all three endpoints, and patients >80 years randomized to PPCI experienced a lower rate of the composite endpoint. However, individual endpoints in the oldest patients were likely underpowered as only 6% ($n = 410$) were >80 years. Findings from contemporary RCTs and meta-analyses comparing PPCI and fibrinolysis in older patients with STEMI are summarized in [Table 1](#).

Current practice guidelines on the management of ST-elevation myocardial infarction in older adults

Treatment guidelines from the UK and European Society of Cardiology (ESC) recommend CAG with subsequent PPCI if indicated for STEMI in patients of all ages, where it can be performed within 2 h.^{35,36} Beyond this time period, patients may receive fibrinolysis and those ineligible for either reperfusion strategy should be treated medically with dual antiplatelet therapy (DAPT; aspirin and a P2Y₁₂ inhibitor). The National Institute for Health and Care Excellence (NICE) specifically recommends that eligibility is assessed 'irrespective of age' and ESC guidance stresses 'there is no upper age limit with respect to reperfusion, especially with PPCI'.^{35,36} Raised bleeding risk is widely recognized in older adults, particularly with fibrinolysis, therefore dose adjustments are recommended.³⁶

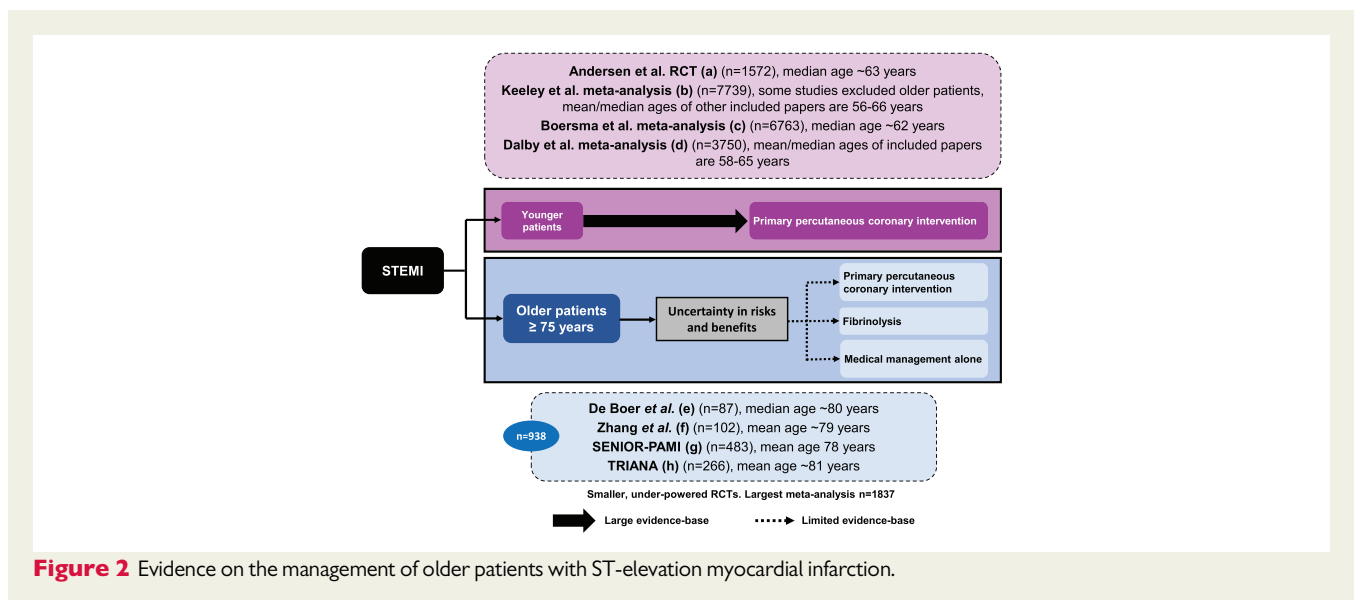


Figure 2 Evidence on the management of older patients with ST-elevation myocardial infarction.

Table 1 Randomized control trials and meta-analyses comparing primary percutaneous coronary intervention and fibrinolysis/thrombolysis in older patients with ST-elevation myocardial infarction

Study	Outcome	Results		
		PPCI (%) vs. thrombolysis (%)	RR, thrombolysis, vs. PPCI (95% CI)	P-value
De Boer <i>et al.</i> RCT (2002) (e) n = 87 ≥75 years old	Primary endpoint: death, re-infarction, or stroke at 30 days	9 vs. 29	4.3 (1.2–20.0)	0.01
	Death at 30 days	7 vs. 22	4.0 (0.9–24.6)	0.04
	Death, re-infarction, or stroke at 1 year	13 vs. 44	5.2 (1.7–18.1)	0.001
	Death at 1 year	11 vs. 29	3.4 (1.0–13.5)	0.03
Zhang <i>et al.</i> RCT (2006) (f) n = 102 ≥75 years	Primary endpoint: MACE (death, non-fatal MI, or revascularization) at 1 year	PPCI (%) vs. conservative (%) 21.3 vs. 45.2	OR, PPCI, vs. conservative (95% CI) — ^a	P-value 0.029
	In-hospital mortality	2.0 vs. 15.4	—	0.04
	MACE at 1 year	—	0.34 (0.21–0.69)	0.03
SENIOR-PAMI RCT (2005) (g) n = 483 ≥70 years	Primary endpoint: death or disabling stroke at 30 days	PPCI (%) vs. thrombolysis (%) 11.3 vs. 13.0		P-value 0.57
	In-hospital major bleeding	5.6 vs. 6.2		0.79
	Death, disabling stroke, or re-infarction at 30 days	11.6 vs. 18.0		0.05
	Age 70- to 80-year subgroup: death, disabling stroke, or re-infarction at 30 days	7.7 vs. 17.0		0.009
	Age >80-year subgroup: death, disabling stroke, or re-infarction at 30 days	22.0 vs. 22.0		—
	Death at 30 days	10.0 vs. 13.0		0.48
TRIANA RCT (2011) (h) n = 266 ≥75 years	Disabling stroke at 30 days	0.8 vs. 2.2		0.26
	Re-infarction at 30 days	1.6 vs. 5.4		0.039
	Primary endpoint: death, re-infarction, or disabling stroke at 30 days	PPCI (%) vs. fibrinolysis (95% CI) 18.9 vs. 25.4	OR, PPCI, vs. fibrinolysis (95% CI) 0.69 (0.38–1.23)	P-value 0.21
	Death at 30 days	13.6 vs. 17.2	0.76 (0.39–1.49)	0.43
	Re-infarction at 30 days	5.3 vs. 8.2	0.63 (0.24–1.67)	0.34
	Disabling stroke at 30 days	0.8 vs. 3.0	0.16 (0.02–1.37)	0.37
	Major bleeding at 30 days	3.8 vs. 4.5	0.84 (0.25–2.82)	0.78
	Recurrent ischaemia at 30 days	0.8 vs. 9.7	0.07 (0.01–0.55)	0.001
	Death, re-infarction, or disabling stroke at 1 year	27.3 vs. 32.1	0.79 (0.47–1.34)	0.39
	Death at 1 year	21.2 vs. 23.1	0.90 (0.50–1.60)	0.71
Re-infarction at 1 year	8.3 vs. 10.4	0.78 (0.34–1.59)	0.56	
	Disabling stroke at 1 year	0.8 vs. 3.8	0.20 (0.02–1.71)	0.37
	Major bleeding at 1 year	6.1 vs. 5.2	1.17 (0.41–3.33)	0.77
	Recurrent ischaemia at 1 year	0.8 vs. 11.9	0.06 (0.01–0.43)	<0.001

Continued

Table 1 Continued

Study	Outcome	OR, PPCI, vs. fibrinolysis (95% CI)	P-value
Bueno et al. pooled analysis (2011) (i) n = 834 ≥70 years	Risk of death, re-infarction, or disabling stroke	0.64 (0.45–0.91)	0.013
	Risk of death	0.74 (0.49–1.13)	0.16
De Boer et al. meta-analysis (2010) (j) n = 6763, with 1837 ≥70 years	All-cause mortality, re-infarction, or stroke in 70- to 80-year olds	0.45 (0.34–0.59)	—
	All-cause mortality in 70- to 80-year olds	0.55 (0.39–0.76)	—
	Re-infarction in 70- to 80-year olds	0.37 (0.23–0.62)	—
	Stroke in 70- to 80-year olds	0.36 (0.20–0.68)	—
	All-cause mortality, re-infarction, or stroke in >80 year olds	0.56 (0.36–0.86)	—
	All-cause mortality in >80 year olds	0.62 (0.39–1.0)	—
	Re-infarction in >80 year olds	0.53 (0.21–1.4)	—
	Stroke in >80 year olds	0.72 (0.31–1.7)	—

CI, confidence interval; MACE, major adverse cardiovascular events; OR, odds ratio; PPCI, primary percutaneous coronary intervention; RCT, randomized controlled trial; RR, relative risk; STEMI, ST-elevation myocardial infarction.

^aA dash (—) indicates data are not available.

Future directions on the management of ST-elevation myocardial infarction in older adults

Although there have been advances with improved stent technologies and new pharmacological agents, recommendations on the use of PPCI and fibrinolysis are based on studies enrolling small numbers of older patients and there is a lack of evidence and clinical guidance on how frailty and comorbidity should be considered. However, the superiority of PPCI over fibrinolysis appears to extend to older patients and existing literature suggests that fibrinolysis may be safe and effective if needed. But the largest study evaluating PPCI vs. thrombolysis was conducted >15 years ago.³³ Thus, there is a need for further large-scale RCTs comparing PPCI and fibrinolysis in older patients with frailty and comorbidities using contemporary care. However, such studies are likely to face challenges because of the difficulties enrolling 'very old' patients and ethical concerns, given the maintained apprehensions about bleeding risk in thrombolysis and the confidence in PPCI.

Non-ST-elevation acute coronary syndrome in older adults

Generally, RCTs and meta-analyses of predominantly younger populations of patients with NSTEMACS show that an invasive strategy results in reductions in composite endpoints (cardiovascular death or re-infarction) with no effect on mortality.³⁷ The greatest benefits of an invasive strategy, in terms of reduction in death or MI, have been demonstrated in high-risk patients, such as older patients or those with greater risk scores³⁸ even though, older patients are less likely to receive CAG.⁴

Evidence on the management of non-ST-elevation acute coronary syndrome in older adults

Observational studies

Observational studies may better reflect the heterogeneous older patient population and clinical practice with 'real-world' data in comparison to RCTs with restrictive entry criteria. Main findings in selected observational studies in older NSTEMACS patients are summarized in [Supplementary material online](#), S2.

Randomized controlled trials

To date, only five RCTs specifically investigating an invasive strategy in older patients with NSTEMACS have published results. Their main findings are summarized in [Table 2](#). The After Eighty trial (n = 457, mean age 85 years, female 50.8%) did not find a mortality benefit for older patients with NSTEMACS randomized to an invasive vs. a conservative strategy but a significantly lower incidence of the primary composite outcome (MI, need for urgent revascularization, stroke, and death) at an average of 18 months of follow-up, driven by lower rates of recurrent MI and urgent revascularization.³⁹ However, there were no frailty or HRQoL assessments and almost 90% of screened patients were excluded for unclear 'logistical' reasons—limiting the generalizability of findings to the real-world population. RCTs of patients with NSTEMACS are summarized in [Figure 3](#).

Table 2 Randomized control trials comparing invasive and conservative approaches in older patients with non-ST-elevation acute coronary syndrome

Study and population	Outcome	Results		
		Early invasive (%) vs. initially conservative (%)	HR, early invasive vs. initially conservative (95% CI)	P-value
Savonitto <i>et al.</i> Italian Elderly ACS (2012) (IV) n = 313 NSTEACS ≥75 years old	Primary endpoint: death, re-infarction, disabling stroke, repeat hospital stay for cardiovascular causes, and severe bleeding at 1 year Primary endpoint: in patients with elevated troponin levels Primary endpoint: in patients with normal troponin levels Death at 1 year Re-infarction at 1 year Repeat hospital stay for cardiovascular causes or severe bleeding at 1 year Recurrent ischaemia during hospitalization	27.9 vs. 34.6 22.1 vs. 40.0 37.7 vs. 26.7 12.3 vs. 13.8 7.1 vs. 10.7 11.7 vs. 13.8 0.6 vs. 9.4	0.80 (0.53–1.19) 0.43 (0.23–0.80) 1.67 (0.75–3.70) 0.87 (0.49–1.56) 0.67 (0.33–1.36) 0.81 (0.45–1.46) —	0.26 0.0375 — ^a 0.65 0.27 0.49 0.0004
Tegn <i>et al.</i> After Eighty (2016) (V) n = 457 NSTEACS ≥80 years old	Primary endpoint: death, re-infarction, need for urgent revascularization, and stroke at mean follow-up of 18 months Death over follow-up Re-infarction over follow-up Need for urgent revascularization over follow-up Stroke over follow-up Major bleeding	41 vs. 61 25 vs. 27 17 vs. 30 2 vs. 11 3 vs. 6 1.7 vs. 1.8	HR, early invasive vs. conservative (95% CI) 0.53 (0.41–0.69) 0.89 (0.62–1.28) 0.52 (0.35–0.76) 0.19 (0.07–0.52) 0.60 (0.25–1.46) —	0.0001 0.534 0.001 0.001 0.265 —
Sanchis <i>et al.</i> MOSCA (2016) (VI) n = 106 NSTEMI ≥70 years old with two comorbidities	Primary endpoint: death, re-infarction, or readmission for cardiac cause at 2.5 years All-cause mortality Re-infarction Bleeding episodes Primary endpoint: death, re-infarction, or readmission for cardiac cause at 2.5 years (first-event analysis) Mortality at 3 months Mortality at the end of follow-up Mortality or ischaemic events at 3 months Mortality or ischaemic events at the end of follow-up	— 42 vs. 48 — — — — — —	IRR, routine invasive vs. selective invasive (95% CI) 0.95 (0.47–1.92) 0.69 (0.39–1.23) 1.24 (0.52–2.96) 0.45 (0.10–2.13) HR, routine invasive vs. selective invasive (95% CI) 0.77 (0.48–1.24) 0.35 (0.12–0.99) 0.69 (0.39–1.23) 0.43 (0.19–0.98) 0.70 (0.42–1.19)	0.877 0.205 — 0.289 0.285 0.048 0.205 0.046 0.194

Continued

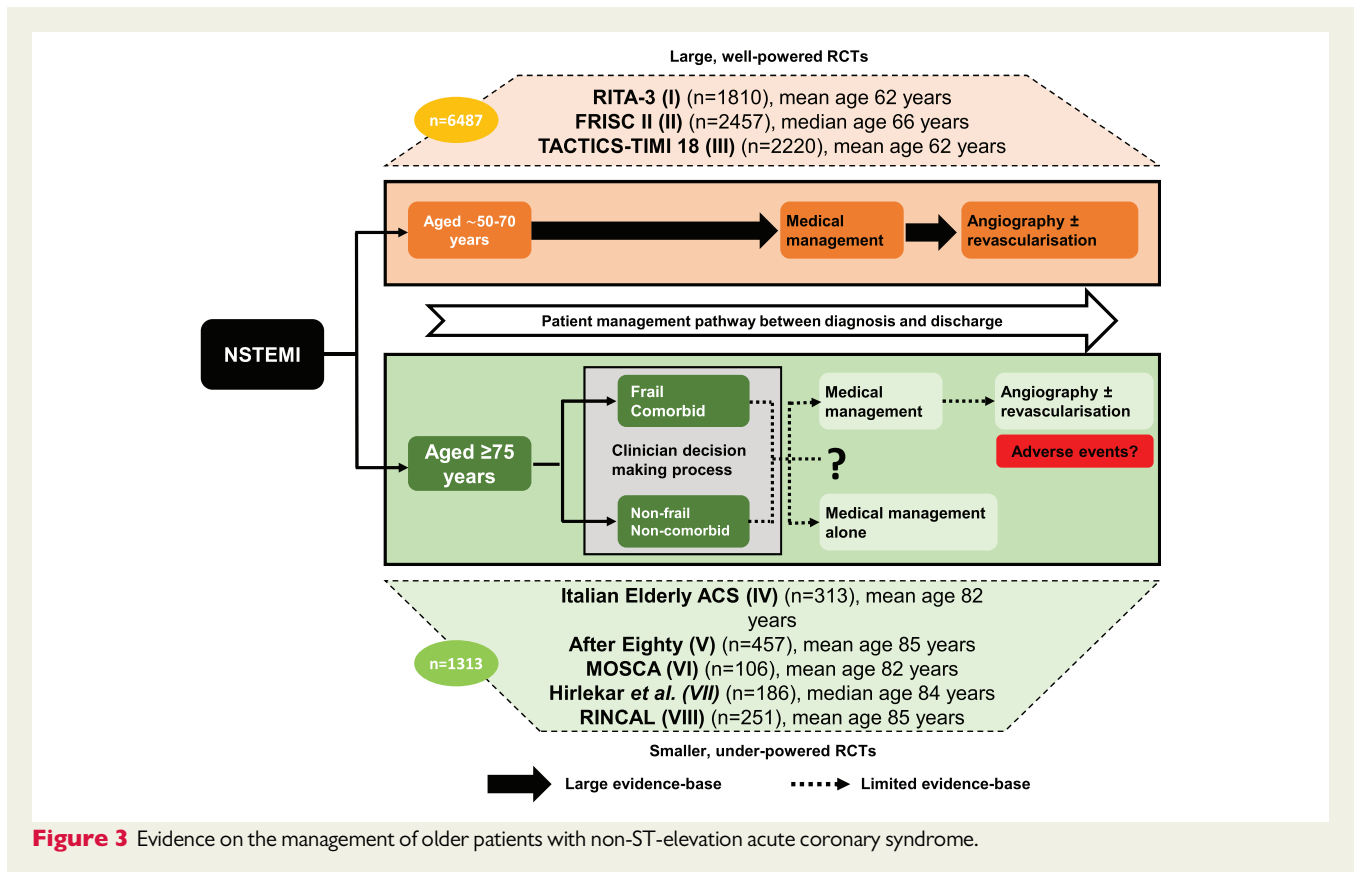
Table 2 Continued

Study and population		Outcome	Results		
			Invasive (%) vs. conservative (%)	HR, invasive vs. conservative (95% CI)	P-value
Hirilekar et al. (2020) (VII) n = 186 NSTEMI ≥80 years old	Primary endpoint: all-cause mortality, re-infarction, stroke, urgent revascularization, or re-hospitalization for cardiac causes at 1 year	34.3 vs. 37.7	0.90 (0.55–1.46)	0.66	
	All-cause mortality	11.0 vs. 15.2	0.70 (0.31–1.58)	0.40	
	Re-infarction	12.9 vs. 22.3	0.56 (0.27–1.18)	0.13	
	Stroke	3.7 vs. 2.3	1.35 (0.23–7.98)	0.74	
	Urgent revascularization	4.6 vs. 16.5	0.29 (0.10–0.85)	0.02	
	Re-hospitalization for cardiac causes	15.2 vs. 9.4	1.62 (0.67–3.90)	0.28	
	MACCE within 1 month	11.9 vs. 16.2	0.72 (0.33–1.56)	0.40	
	Minor bleeding within 1 month	4.4 vs. 2.2	1.81 (0.34–9.61)	0.49	
		Routine invasive (%) vs. selective invasive (%)	HR, routine invasive vs. selective invasive (95% CI)	P-value	
De Belder et al. RINCAL (2020) (VIII) n = 251 NSTEMI ≥80 years old	Primary endpoint: all-cause mortality and re-infarction at 1 year	18.5 vs. 22.2	0.79 (0.45–1.35)	0.39	
	All-cause mortality at 1 year	10.5 vs. 11.1	0.94 (0.44–1.99)	0.86	
	Non-fatal re-infarction at 1 year	9.7 vs. 14.3	0.64 (0.31–1.32)	0.23	
	Unplanned revascularization at 1 year	1.6 vs. 6.4	—	0.10	
	Major bleeding	5.6 vs. 2.4	—	0.21	
	Angina symptoms ^b at 3 months	8.8 vs. 19.0	—	< 0.001	
	Angina symptoms ^b at 1 year	15.0 vs. 16.8	—	0.25	

ACS, acute coronary syndrome; CI, confidence interval; HR, hazard ratio; IRR, incidence rate ratio; MACCE, major adverse cardiac and cerebrovascular events; NSTEMI, non-ST-elevation myocardial infarction.

^aA dash (—) indicates data are not available.

^bThe rates of Canadian Cardiovascular Society (CCS) angina 'Class 1'.



Meta-analyses

Ma *et al.*⁴⁰ analysed a large cohort of older patients with NSTEMACS and found that an early invasive approach conferred a lower risk of death and secondary endpoints (including MACE, MI, and a composite of death and MI) in 5-year follow-up, although the result in favour for invasive approach regards to mortality was driven by the observational studies included in the cohort. Garg *et al.*⁴¹ reviewed patients with NSTEMACS aged ≥ 75 years with a focus on RCTs and found a lower risk of subsequent revascularization amongst those managed by a routine invasive approach. Consistent with previous studies, there was no reduction in all-cause or cardiovascular mortality. This highlights the inconsistencies between the RCTs and observational studies and the non-uniform definition of endpoints. The main findings of existing meta-analyses are summarized in [Table 3](#).

Current clinical guidelines on the management of non-ST-elevation acute coronary syndrome in older adults

National Institute for Health and Care Excellence, ESC, and American Heart Association/American College of Cardiology (AHA/ACC) guidelines recommend risk stratification of patients with NSTEMACS of all ages, with those at intermediate or higher risk of adverse outcomes receiving a routine invasive strategy of CAG and subsequent revascularization if indicated. Older patients are seen as an important subgroup but the only 'key recommendation' is to apply

the same invasive approach as for the younger patient.^{35,42,43} Guidelines suggest that management decisions regarding older NSTEMACS patients should be patient-centred and consideration of the risk of future cardiovascular events, comorbidities, benefits and risks of invasive revascularization (including both ischaemic and bleeding risks), HRQoL, frailty, cognitive status, functional impairment, life expectancy, and patient preferences. Given the paucity of evidence, there is a lack of consensus and specific clinical guidance on how these factors should be considered.

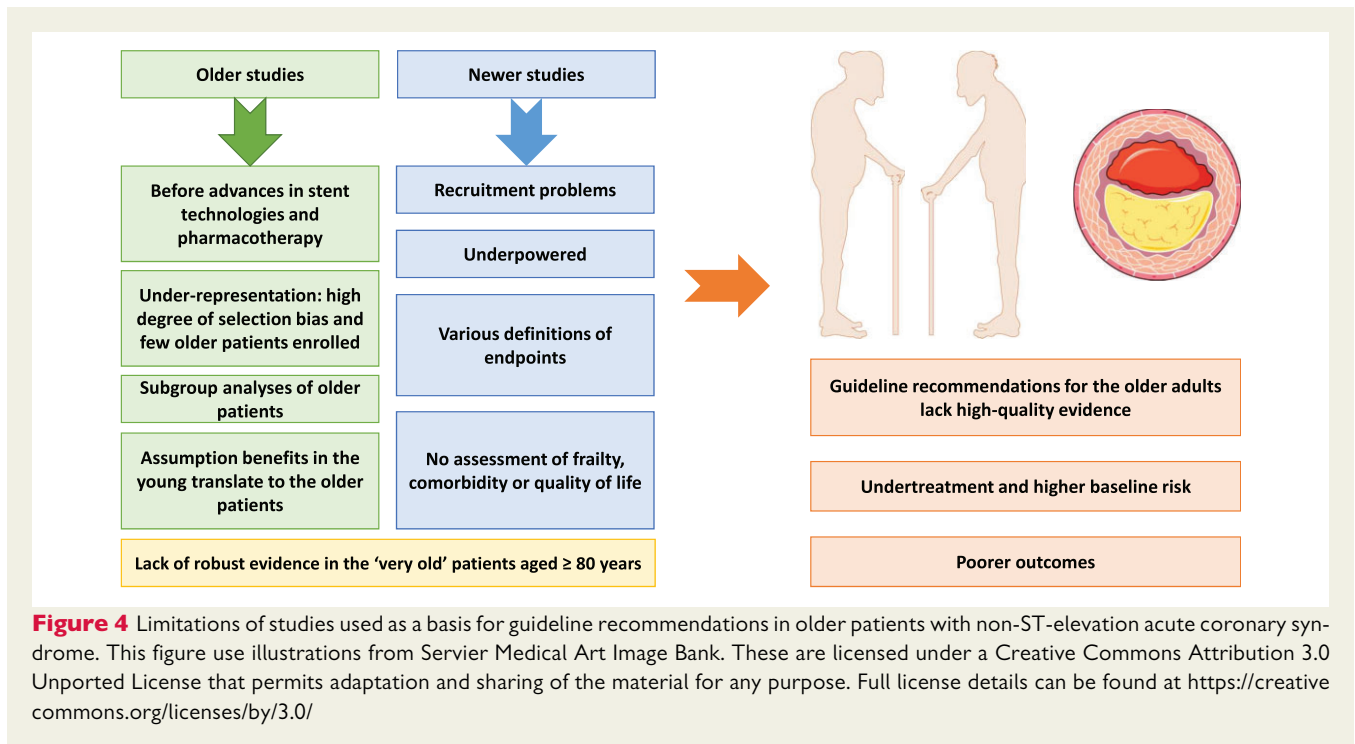
Future directions on the management of non-ST-elevation acute coronary syndrome in older adults

The exact benefits of an invasive strategy in the management of NSTEMACS in older adults are not clearly established and results from RCTs, meta-analyses, and observational studies are inconsistent. The age disparity between trial and registry populations widens as age increases.⁵ The problems with RCTs of older NSTEMACS patients consist of lack of power, slow enrolment, and excluding those with comorbidities, frailty, or very high procedural risk. Therefore, enrolled patients tend to have lower rates of traditional risk factors, better renal function, fewer cardiovascular comorbidities, and preferential haemodynamic measurements than the 'real world' population.⁵ Furthermore, it remains challenging to compare studies, given that varying composite endpoints and invasive strategies are

Table 3 Meta-analyses comparing invasive and conservative approaches in older patients with non-ST-elevation acute coronary syndrome

Meta-analysis	Outcome	Results		
		OR, routine invasive vs. initial medical (95% CI)	P-value	I ² (%)
Gnanenthiran et al. (2017) (IX) n = 20 540 NSTEMACS ≥75 years old Four RCTs and 3 observational studies, with follow-up from 6 months to 5 years	In-hospital mortality	0.65 (0.53–0.79)	<0.0001	38
	Mortality	0.67 (0.61–0.74)	<0.00001	0
	Mortality, with analysis limited to RCTs	0.84 (0.66–1.06)	0.15	0
	In-hospital re-infarction	0.43 (0.30–0.61)	<0.00001	0
	Re-infarction	0.56 (0.45–0.70)	<0.00001	18
	Re-infarction, with analysis limited to RCTs	0.51 (0.40–0.66)	<0.00001	0
	Need for revascularization	0.27 (0.13–0.56)	0.0005	0
	Stroke	0.53 (0.30–0.95)	0.03	0
	In-hospital major bleeding	2.37 (1.53–3.68)	0.0001	30
	Major bleeding at follow-up, with analysis limited to RCTs	2.19 (1.12–4.28)	0.02	0
		RR, early invasive vs. initial conservative (95% CI)	P-value	I ² (%)
Ma et al. (2018) (X) n = 832 007 NSTEMACS ≥75 years old Four RCTs and 9 observational studies, with follow-up from 6 months to 5 years	Primary endpoint: mortality	0.65 (0.59–0.73)	<0.001	23.7
	Mortality, with analysis limited to RCTs	0.82 (0.64–1.05)	0.119	0
	In-hospital mortality	0.70 (0.53–0.92)	0.011	49.5
	Re-infarction	0.58 (0.46–0.72)	<0.001	0
	Mortality or re-infarction	0.63 (0.50–0.79)	<0.001	21.8
	Stroke	0.54 (0.30–0.97)	0.04	0
	MACE	0.60 (0.49–0.74)	<0.001	38.3
	Re-hospitalization	0.95 (0.75–1.21)	0.672	0
	Any in-hospital bleeding	2.51 (1.53–4.11)	<0.001	0
In-hospital major bleeding	1.78 (0.31–10.13)	0.514	37.1	
		OR, routine invasive vs. selective invasive (95% CI)	P-value	I ² (%)
Garg et al. (2018) (XI) n = 1887 NSTEMACS ≥75 years old Six RCTs, with mean follow-up of 3 years	All-cause death	0.87 (0.63–1.20)	0.38	0
	Cardiovascular death	0.84 (0.61–1.15)	0.27	0
	Re-infarction	0.51 (0.40–0.66)	<0.001	0
	Death or re-infarction	0.65 (0.51–0.83)	<0.001	0
	Need for revascularization	0.31 (0.11–0.91)	0.03	51
	Major bleeding	1.96 (0.97–3.97)	0.06	7
		RR, early invasive vs. initial conservative (95% CI)	P-value	I ² (%)
Reano et al. (2020) (XII) n = 3768 NSTEMACS ≥65 years old Six RCTs, with follow-up from 3 months to 15 years	All-cause mortality	0.69 (0.39–1.23)	0.21	91
	Cardiovascular mortality	0.86 (0.67–1.10)	0.23	0
	Re-infarction	0.63 (0.39–1.04)	0.07	60
	Stroke	0.52 (0.26–1.03)	0.06	0
	Need for revascularization	0.29 (0.14–0.59)	0.002	3
	Recurrent angina at 1 year	0.81 (0.45–1.46)	0.49	—

CI, confidence interval; MACE, major adverse cardiovascular events; NSTEMACS, non-ST-elevation acute coronary syndrome; NSTEMI, non-ST-elevation myocardial infarction; OR, odds ratio; RCT, randomized controlled trial; RR, risk ratio.



investigated. Resulting in no direct impact on patient care and current management recommendations reflecting this lack of evidence (summarized in [Figure 4](#)). Further well-powered RCTs are required, as well as the inclusion and evaluation of comorbid and frail patients, in order to improve the generalizability of findings to the real-world population. The benefit-risk profile of invasive strategies in the older patient cohort is currently investigated in the British Heart Foundation older patients with non-ST SEGmeNt elevatiOn myocaRdial infarction Randomized Interventional TreAtment (BHF SENIOR-RITA) trial.⁴⁴ Patients ≥ 75 years old with NSTEMI are randomized to a routine invasive approach or a conservative strategy, with broad eligibility criteria to include a representative population, including patients with frailty and comorbidities.

Contemporary treatment strategies in older patients

Advances in interventional techniques and technologies enable an optimal management of more complex coronary anatomy.⁴⁵ In addition to ischaemic events, older patients are at increased risk of complications due to both the medical and invasive ACS treatment, such as bleeding, which increases the mortality rates.⁴⁶ Older adults are also at higher risk of contrast-induced nephropathy following PCI. Therefore, appropriate measures should be implemented to prevent contrast-induced nephropathy.^{47–49}

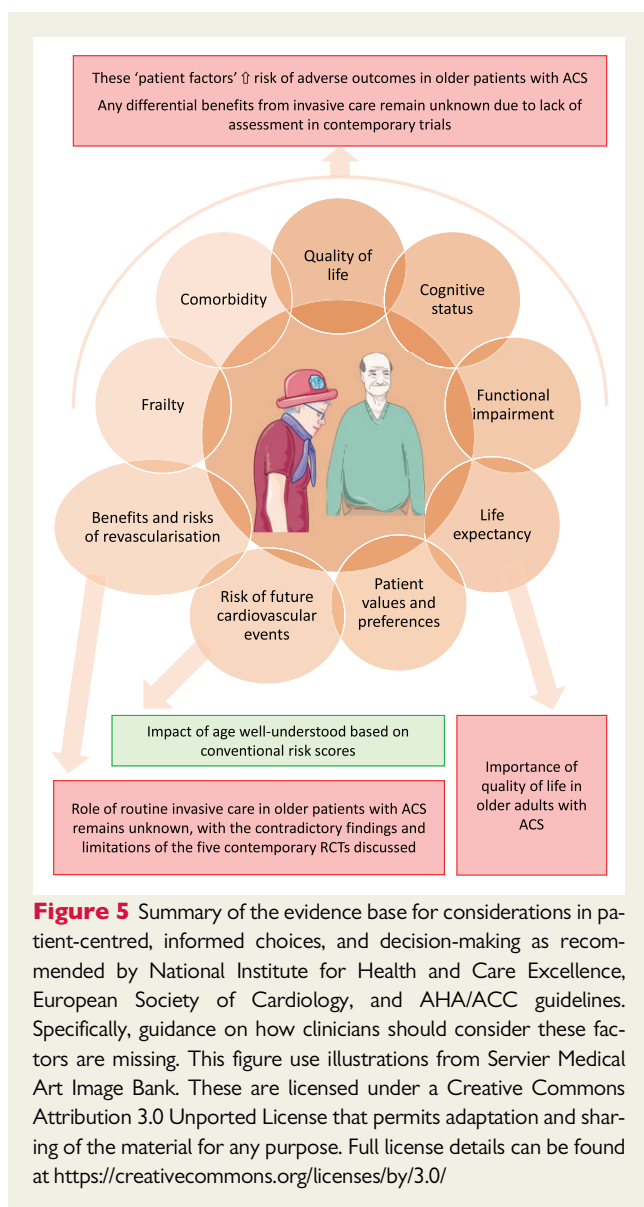
In contemporary practice, the bleeding risk, however, is reduced by the widespread use of radial access.⁵⁰ Bleeding risk is further reduced with the use of latest generation drug-eluting stents and

shorter duration of DAPT.^{51–53} A strategy of ticagrelor monotherapy following 3 months of DAPT therapy significantly reduced clinically relevant bleeding compared with ticagrelor plus aspirin without an increase in ischaemic events, irrespective of age.⁵⁴

Current guidelines recommend the same secondary prevention treatment in older adults as in younger patients regarding management of hypercholesterolaemia, hypertension, and type 2 diabetes mellitus. Although guidelines mention the importance of some considerations for older and frail patients these are only class C recommendations at present.⁵⁵ Statin treatment has been shown to decrease the risk of adverse events in older patients with ACS.⁵⁶ A recently published meta-analysis showed that blood pressure reduction should be considered as an important treatment option, regardless of age.⁵⁷ The ACCORD study showed that a slower reduction of glycaemia is favourable in older patients.⁵⁸ Similarly, for frail and older patients, a less stringent Glycated Haemoglobin (HbA1c) target should be considered.⁵⁹

Why are older patients less likely to be studied in clinical trials?

Although the mean age of participants in ACS trials has increased in recent years, older patients remain under-represented.^{4,60,61} Reasons behind this are, in our opinion, likely multifactorial and linked to potential preconceptions in the management of older patients with ACS. It can be speculated that various unique characteristics that are more common in older patients might act as barriers to trial recruitment or participation. For example hearing or visual impairments and issues with transport if study protocols involve numerous follow-up visits. Cognitive impairment



is likely perceived as an absolute barrier to enrolment too and fewer older patients are probably approached for trial enrolment because of indirect ageism or bias especially with outcomes focused on mortality. Notwithstanding the paucity of specific evidence, its dissemination is often limited both among clinicians and among patients. Similarly, penetration of knowledge about CV risk and practice guidelines is suboptimal, being one of the causal factors for low adherence to treatment in older adults.

What is missing from the current data?

In our opinion, the heterogeneity of the older adult population causes that a 'one-size-fits-all' approach is inappropriate and management decisions regarding invasive care should be individualized. However, robust evidence is needed to inform individual decision-making. Gaps in the current evidence regarding guideline-recommended factors to

consider when discussing interventional management strategies in older patients with NSTEMI/ACS are summarized in [Figure 5](#). To better reflect the heterogeneous characteristics of older patients with ACS it is our belief that older patients need to be recruited into RCTs. Thus future trials need wider inclusion criteria designed to suit inclusion of older patients, which also have been stated by previous papers in this topic.^{60,61}

Conclusions/learning points

Recent pharmacological studies provide evidence that older patients should be offered the same treatment as younger patients specifically in the management of blood pressure, diabetes, and cholesterol. Several recent studies have shown that short duration of DAPT is beneficial in reducing bleeding without affecting ischaemic outcomes in high-risk ACS patients. However, there is a paucity of robust evidence regarding the benefits and risks of contemporary interventional management strategies particularly among frail, comorbid older patients with ACS. There is therefore need for well-powered, multi-centre RCTs that better represent the real-world population dedicated to this patient group.

Lead author biography



Dr Vijay Kunadian is an academic consultant interventional cardiologist based at Newcastle University and Freeman Hospital, Newcastle upon Tyne, UK. She is Chief Investigator in many multi-centre clinical trials and published >150 peer-reviewed publications. She is a member of the ESC Regulatory Affairs Committee; Member of the ESC Education Committee; Director

of Webinar series, Task Force Lead-Live events; She was board of the EAPCI, co-chair of the Scientific Committee of the EAPCI; Member EAPCI Women's Committee, Young Committee, Database & Registries Committee; Steering Committee member Research and Development Committee of the BCIS. She has mentored >30 postgraduates.

Supplementary material

Supplementary material is available at *European Heart Journal Open* online.

Data availability: No new data were generated or analysed in support of this research.

Acknowledgements

G.B.M. is supported in his studies by an Intercalated Award from the Wolfson Foundation, administered by the Royal College of Physicians.

Funding

V.K. is supported by the British Heart Foundation Clinical Study Grant (CS/15/7/316), NIHR Newcastle Biomedical Research Centre, and Institutional Research Grant from AstraZeneca (ISSBRIL0303). C.W. is funded by the NIHR as an Academic Clinical Lecturer.

Conflict of interest: none declared.

References

- GBD 2016 Causes of Death Collaborators. Global, regional, and national age-sex specific mortality for 264 causes of death, 1980-2016: a systematic analysis for the Global Burden of Disease Study 2016. *Lancet* 2017;**390**:1151–1210.
- World Health Organisation. *Ageing and Health*. 2018;2021.
- Gale CP, Cattle BA, Woolston A, Baxter PD, West TH, Simms AD, Blaxill J, Greenwood DC, Fox KA, West RM. Resolving inequalities in care? Reduced mortality in the elderly after acute coronary syndromes. The Myocardial Ischaemia National Audit Project 2003-2010. *Eur Heart J* 2012;**33**:630–639.
- Tahhan AS, Vaduganathan M, Greene SJ, Alrohaibani A, Raad M, Gafeer M, Mehran R, Fonarow GC, Douglas PS, Bhatt DL, Butler J. Enrollment of older patients, women, and racial/ethnic minority groups in contemporary acute coronary syndrome clinical trials: a systematic review. *JAMA Cardiol* 2020;**5**:714–722.
- Alexander KP, Newby LK, Cannon CP, Armstrong PW, Gibler WB, Rich MW, Van de Werf F, White HD, Weaver WD, Naylor MD, Gore JM, Krumholz HM, Ohman EM. Acute coronary care in the elderly, part I: non-ST-segment-elevation acute coronary syndromes: a scientific statement for healthcare professionals from the American Heart Association Council on Clinical Cardiology: in collaboration with the Society of Geriatric Cardiology. *Circulation* 2007;**115**:2549–2569.
- Brieger D, Eagle KA, Goodman SG, Steg PG, Budaj A, White K, Montalescot G. Acute coronary syndromes without chest pain, an underdiagnosed and undertreated high-risk group: insights from the Global Registry of Acute Coronary Events. *Chest* 2004;**126**:461–469.
- Zaman MJ, Stirling S, Shepstone L, Ryding A, Flather M, Bachmann M, Myint PK. The association between older age and receipt of care and outcomes in patients with acute coronary syndromes: a cohort study of the Myocardial Ischaemia National Audit Project (MINAP). *Eur Heart J* 2014;**35**:1551–1558.
- Lopes RD, White JA, Tricoci P, White HD, Armstrong PW, Braunwald E, Giugliano RP, Harrington RA, Lewis BS, Brogan GX Jr, Gibson CM, Califf RM, Newby LK. Age, treatment, and outcomes in high-risk non-ST-segment elevation acute coronary syndrome patients: insights from the EARLY ACS trial. *Int J Cardiol* 2013;**167**:2580–2587.
- Fried LP, Tangen CM, Walston J, Newman AB, Hirsch C, Gottdiener J, Seeman T, Tracy R, Kop WJ, Burke G, McBurnie MA; Cardiovascular Health Study Collaborative Research Group. Frailty in older adults: evidence for a phenotype. *J Gerontol A Biol Sci Med Sci* 2001;**56**:M146–M156.
- Walker DM, Gale CP, Lip G, Martin-Sanchez FJ, McIntyre HF, Mueller C, Price S, Sanchis J, Vidan MT, Wilkinson C, Zeymer U, Bueno H. Editor's Choice—Frailty and the management of patients with acute cardiovascular disease: A position paper from the Acute Cardiovascular Care Association. *Eur Heart J Acute Cardiovasc Care* 2018;**7**:176–193.
- Clegg A, Young J, Iliffe S, Rikkert MO, Rockwood K. Frailty in elderly people. *Lancet* 2013;**381**:752–762.
- Sanchis J, Bonanad C, Ruiz V, Fernández J, García-Blas S, Mainar L, Ventura S, Rodríguez-Borja E, Chorro FJ, Hermenegildo C, Bertomeu-González V, Núñez E, Núñez J. Frailty and other geriatric conditions for risk stratification of older patients with acute coronary syndrome. *Am Heart J* 2014;**168**:784–791.
- Batty J, Qiu W, Gu S, Sinclair H, Veerasamy M, Beska B, Neely D, Ford G, Kunadian V; ICON-1 Study Investigators. One-year clinical outcomes in older patients with non-ST elevation acute coronary syndrome undergoing coronary angiography: an analysis of the ICON1 study. *Int J Cardiol* 2019;**274**:45–51.
- Chung K, Wilkinson C, Veerasamy M, Kunadian V. Frailty scores and their utility in older patients with cardiovascular disease. *Interv Cardiol* 2021;**16**:e05.
- Rockwood K, Song X, MacKnight C, Bergman H, Hogan DB, McDowell I, Mitnitski A. A global clinical measure of fitness and frailty in elderly people. *CMAJ* 2005;**173**:489–495.
- Gu SZ, Qiu W, Batty JA, Sinclair H, Veerasamy M, Brugaletta S, Neely D, Ford G, Calvert PA, Mintz GS, Kunadian V. Coronary artery lesion phenotype in frail older patients with non-ST-elevation acute coronary syndrome undergoing invasive care. *EuroIntervention* 2019;**15**:e261–e268.
- Ekerstad N, Swahn E, Janzon M, Alfredsson J, Löfmark R, Lindenberg M, Carlsson P. Frailty is independently associated with short-term outcomes for elderly patients with non-ST-segment elevation myocardial infarction. *Circulation* 2011;**124**:2397–2404.
- Beska B, Coakley D, MacGowan G, Adams-Hall J, Wilkinson C, Kunadian V. Frailty and quality of life after invasive management for non-ST elevation acute coronary syndrome. *Heart* 2021. <https://doi.org/10.1136/heartjnl-2021-319064>.
- Zhang F, Mohamed MO, Ensor J, Peat G, Mamas MA. Temporal trends in comorbidity burden and impact on prognosis in patients with acute coronary syndrome using the Elixhauser Comorbidity Index Score. *Am J Cardiol* 2020;**125**:1603–1611.
- Mamas MA, Fath-Ordoubadi F, Danzi GB, Spaepen E, Kwok CS, Buchan I, Peek N, de Belder MA, Ludman PF, Paunovic D, Urban P. Prevalence and impact of co-morbidity burden as defined by the Charlson co-morbidity index on 30-day and 1- and 5-year outcomes after coronary stent implantation (from the Nobori-2 study). *Am J Cardiol*. 2015 Aug 1;**116**(3):364–71.
- Palau P, Núñez J, Sanchis J, Husser O, Bodí V, Núñez E, Miñana G, Boesen L, Ventura S, Llàcer A. Differential prognostic effect of revascularization according to a simple comorbidity index in high-risk non-ST-segment elevation acute coronary syndrome. *Clin Cardiol* 2012;**35**:237–243.
- Hajduk AM, Saczynski JS, Tsang S, Geda ME, Dodson JA, Ouellet GM, Goldberg RJ, Chaudhry SI. Presentation, treatment, and outcomes of older adults hospitalized for acute myocardial infarction according to cognitive status: the SILVER-AMI study. *Am J Med* 2021;**134**:910–917.
- Gu SZ, Beska B, Chan D, Neely D, Batty J, Adams-Hall J, Mossop H, Qiu W, Cognitive VK. Decline in older patients with non-ST elevation acute coronary syndrome. *J Am Heart Assoc* 2019;**8**:e011218.
- Decourcelle V, Maréchal S, Pinçon C, Barrailleur S, Le Jemtel TH, Ennezat PV. Impact of functional decline on outcome in elderly patients with acute coronary syndromes. *Am J Crit Care* 2013;**22**:e1–e11.
- Mori M, Djulbegovic M, Hajduk AM, Holland ML, Krumholz HM, Chaudhry SI. Changes in functional status and health-related quality of life in older adults after surgical, interventional, or medical management of acute myocardial infarction. *Semin Thorac Cardiovasc Surg* 2021;**33**:72–81.
- Tegn N, Abdelnoor M, Aaberge L, Høyen Ranhoff A, Endresen K, Gjertsen E, Skårdal R, Gullestad L, Bendz B; After Eighty study investigators. Health-related quality of life in older patients with acute coronary syndrome randomised to an invasive or conservative strategy. The After Eighty randomised controlled trial. *Age Ageing* 2018;**47**:42–47.
- Goldberg RJ, Steg PG, Sadiq I, Granger CB, Jackson EA, Budaj A, Brieger D, Avezum A, Goodman S. Extent of, and factors associated with, delay to hospital presentation in patients with acute coronary disease (the GRACE registry). *Am J Cardiol* 2002;**89**:791–796.
- Alexander KP, Newby LK, Armstrong PW, Cannon CP, Gibler WB, Rich MW, Van de Werf F, White HD, Weaver WD, Naylor MD, Gore JM, Krumholz HM, Ohman EM. Acute coronary care in the elderly, part II: ST-segment-elevation myocardial infarction: a scientific statement for healthcare professionals from the American Heart Association Council on Clinical Cardiology: in collaboration with the Society of Geriatric Cardiology. *Circulation* 2007;**115**:2570–2589.
- Mehta RH, Sadiq I, Goldberg RJ, Gore JM, Avezum A, Spencer F, Kline-Rogers E, Allogrè J, Pieper K, Fox KA, Eagle KA; GRACE Investigators. Effectiveness of primary percutaneous coronary intervention compared with that of thrombolytic therapy in elderly patients with acute myocardial infarction. *Am Heart J* 2004;**147**:253–259.
- Peiyuan H, Jingang Y, Haiyan X, Xiaojin G, Ying X, Yuan W, Wei L, Yang W, Xinran T, Ruohua Y, Chen J, Lei S, Xuan Z, Rui F, Yunqing Y, Qiuting D, Hui S, Xinxin Y, Runlin G, Yuejin Y; on behalf of the CAMI Registry study group. The comparison of the outcomes between primary PCI, fibrinolysis, and no reperfusion in patients ≥ 75 years old with ST-Segment Elevation Myocardial Infarction: Results from the Chinese Acute Myocardial Infarction (CAMI) Registry. *PLoS One* 2016;**11**:e0165672.
- Schoenenberger AW, Radovanovic D, Windecker S, Iglesias JF, Pedrazzini G, Stuck AE, Erne P. Temporal trends in the treatment and outcomes of elderly patients with acute coronary syndrome. *Eur Heart J* 2016;**37**:1304–1311.
- de Boer MJ, Ottervanger JP, van 't Hof AW, Hoorntje JC, Suryapranata H, Zijlstra F; Zwolle Myocardial Infarction Study Group. Reperfusion therapy in elderly patients with acute myocardial infarction: a randomized comparison of primary angioplasty and thrombolytic therapy. *J Am Coll Cardiol* 2002;**39**:1723–1728.
- Grines C. Senior PAMI: a prospective randomized trial of primary angioplasty and thrombolytic therapy in elderly patients with acute myocardial infarction. *ACC Transcatheter Cardiovasc Therap* 2005.
- de Boer SP, Westerhout CM, Simes RJ, Granger CB, Zijlstra F, Boersma E. Mortality and morbidity reduction by primary percutaneous coronary intervention is independent of the patient's age. *JACC Cardiovasc Interv* 2010;**3**:324–331.
- NICE Guideline 185. Acute coronary syndrome. 2020.
- Ibanez B, James S, Agewall S, Antunes MJ, Bucciarelli-Ducci C, Bueno H, Caforio ALP, Cremonesi A, Deaton-Cookin J, Delgado-García JM, Halvorsen S, Hindricks G, Kastrati A, Lenzen MJ, Prescott E, Roffi M, Valgimigli M, Varenhorst C, Vranckx P, Widimský P; ESC Scientific Document Group. 2018 ESC Guidelines for the management of acute

- myocardial infarction in patients presenting with ST-segment elevation: the Task Force for the management of acute myocardial infarction in patients presenting with ST-segment elevation of the European Society of Cardiology (ESC). *Eur Heart J* 2018;**39**:119–177.
37. Damman P, Clayton T, Wallentin L, Lagerqvist B, Fox KA, Hirsch A, Windhausen F, Swahn E, Pocock SJ, Tijssen JG, de Winter RJ. Effects of age on long-term outcomes after a routine invasive or selective invasive strategy in patients presenting with non-ST segment elevation acute coronary syndromes: a collaborative analysis of individual data from the FRISC II—ICTUS—RITA-3 (FIR) trials. *Heart* 2012;**98**:207–213.
 38. Fox KA, Poole-Wilson P, Clayton TC, Henderson RA, Shaw TR, Wheatley DJ, Knight R, Pocock SJ. 5-year outcome of an interventional strategy in non-ST-elevation acute coronary syndrome: the British Heart Foundation RITA 3 randomised trial. *Lancet* 2005;**366**:914–920.
 39. Tegn N, Abdelnoor M, Aaberge L, Endresen K, Smith P, Aakhus S, Gjertsen E, Dahl-Hofseth O, Ranhoff AH, Gullestad L, Bendz B; After Eighty study investigators. Invasive versus conservative strategy in patients aged 80 years or older with non-ST-elevation myocardial infarction or unstable angina pectoris (After Eighty study): an open-label randomised controlled trial. *Lancet* 2016;**387**:1057–1065.
 40. Ma W, Liang Y, Zhu J. Early invasive versus initially conservative strategy in elderly patients older than 75 years with non-ST-elevation acute coronary syndrome: a meta-analysis. *Heart Lung Circ* 2018;**27**:611–620.
 41. Garg A, Garg L, Agarwal M, Rout A, Raheja H, Agrawal S, Rao SV, Cohen M. Routine invasive versus selective invasive strategy in elderly patients older than 75 years with non-ST-segment elevation acute coronary syndrome: a systematic review and meta-analysis. *Mayo Clin Proc* 2018;**93**:436–444.
 42. Amsterdam EA, Wenger NK, Brindis RG, Casey DE Jr, Ganiats TG, Holmes DR Jr, Jaffe AS, Jneid H, Kelly RF, Kontos MC, Levine GN, Liebson PR, Mukherjee D, Peterson ED, Sabatine MS, Smalling RW, Zieman SJ. 2014 AHA/ACC Guideline for the management of patients with non-ST-elevation acute coronary syndromes: a report of the American College of Cardiology/American Heart Association Task Force on Practice Guidelines. *J Am Coll Cardiol* 2014;**64**:e139–e228.
 43. Collet JP, Thiele H, Barbato E, Barthélémy O, Bauersachs J, Bhatt DL, Dendale P, Dorobantu M, Edvardsen T, Folliguet T, Gale CP, Gilard M, Jobs A, Jüni P, Lambrinou E, Lewis BS, Mehilli J, Meliga E, Merkely B, Mueller C, Roffi M, Rutten FH, Sibbing D, Siontis GCM; ESC Scientific Document Group. 2020 ESC Guidelines for the management of acute coronary syndromes in patients presenting without persistent ST-segment elevation. *Eur Heart J* 2021;**42**:1289–1367.
 44. Kunadian V. The British Heart Foundation SENIOR-RITA Trial. *Clinicaltrials.gov* identifier NCT03052036.
 45. Räber L, Mintz GS, Koskinas KC, Johnson TW, Holm NR, Onuma Y, Radu MD, Joner M, Yu B, Jia H, Meneveau N, de la Torre Hernandez JM, Escaned J, Hill J, Prati F, Colombo A, di Mario C, Regar E, Capodanno D, Wijns W, Byrne RA, Guagliumi G; ESC Scientific Document Group. Clinical use of intracoronary imaging. Part 1: guidance and optimization of coronary interventions. An expert consensus document of the European Association of Percutaneous Cardiovascular Interventions. *Eur Heart J* 2018;**39**:3281–3300.
 46. Ndrepepa G, Guerra E, Schulz S, Fusaro M, Cassese S, Kastrati A. Weight of the bleeding impact on early and late mortality after percutaneous coronary intervention. *J Thromb Thrombolysis* 2015;**39**:35–42.
 47. Katsiki N, Triposkiadis F, Giannoukas AD, Mikhailidis DP. Statin loading in cardiovascular surgery: never too early to treat. *Curr Opin Cardiol* 2018;**33**:436–443.
 48. Wang J, Zhang C, Liu Z, Bai Y. Risk factors of contrast-induced nephropathy after percutaneous coronary intervention: a retrospective analysis. *J Int Med Res* 2021;**49**:3000605211005972.
 49. Zhang Q, Zhang RY, Zhang JS, Hu J, Yang ZK, Zheng AF, Zhang X, Shen WF. Outcomes of primary percutaneous coronary intervention for acute ST-elevation myocardial infarction in patients aged over 75 years. *Chin Med J (Engl)* 2006;**119**:1151–1156.
 50. Valgimigli M, Gagnor A, Calabró P, Frigoli E, Leonardi S, Zaro T, Rubartelli P, Briguori C, Andò G, Repetto A, Limbruno U, Cortese B, Sganzerla P, Lupi A, Galli M, Colangelo S, Ierna S, Ausiello A, Presbitero P, Sardella G, Variella F, Esposito G, Santarelli A, Tresoldi S, Nazzaro M, Zingarelli A, de Cesare N, Rigattieri S, Tosi P, Palmieri C, Brugaletta S, Rao SV, Heg D, Rothenbühler M, Vranckx P, Jüni P; MATRIX Investigators. Radial versus femoral access in patients with acute coronary syndromes undergoing invasive management: a randomised multicentre trial. *Lancet* 2015;**385**:2465–2476.
 51. Urban P, Meredith IT, Abizaid A, Pocock SJ, Carrié D, Naber C, Lipiecki J, Richardt G, Iñiguez A, Brunel P, Valdes-Chavarrí M, Garot P, Talwar S, Berland J, Abdellaoui M, Eberli F, Oldroyd K, Zambahari R, Gregson J, Greene S, Stoll H-P, Morice M-C. Polymer-free drug-coated coronary stents in patients at high bleeding risk. *N Engl J Med* 2015;**373**:2038–2047.
 52. Varenne O, Cook S, Sideris G, Kedev S, Cuisset T, Carrié D, Hovasse T, Garot P, El Mahmoud R, Spaulding C, Helft G, Diaz Fernandez JF, Brugaletta S, Pinar-Bermudez E, Mauri Ferre J, Commeau P, Teiger E, Bogaerts K, Sabate M, Morice MC, Sinnaeve PR; SENIOR investigators. Drug-eluting stents in elderly patients with coronary artery disease (SENIOR): a randomised single-blind trial. *Lancet* 2018;**391**:41–50.
 53. Valgimigli M, Frigoli E, Heg D, Tijssen J, Jüni P, Vranckx P, Ozaki Y, Morice MC, Chevalier B, Onuma Y, Windecker S, Tonino PAL, Roffi M, Lesiak M, Mahfoud F, Bartunek J, Hildick-Smith D, Colombo A, Stanković G, Iñiguez A, Schultz C, Kornowski R, Ong PJJ, Alasnag M, Rodriguez AE, Moschovitis A, Laanmets P, Donahue M, Leonardi S, Smits PC. Dual antiplatelet therapy after PCI in patients at high bleeding risk. *N Engl J Med* 2021;**385**:1643–1655.
 54. Angiolillo DJ, Cao D, Baber U, Sartori S, Zhang Z, Dangas G, Mehta S, Briguori C, Cohen DJ, Collier T, Dudek D, Escaned J, Gibson CM, Gil R, Huber K, Kaul U, Kornowski R, Krucoff MW, Kunadian V, Moliterno DJ, Ohman EM, Oldroyd K, Sardella G, Sharma SK, Shlofmitz R, Weisz G, Witzentichler B, Pocock S, Mehran R. Impact of age on the safety and efficacy of ticagrelor monotherapy in patients undergoing PCI. *JACC Cardiovasc Interv* 2021;**14**:1434–1446.
 55. Visseren FLJ, Mach F, Smulders YM, Carballo D, Koskinas KC, Böck M, Benetos A, Biffi A, Boavida JM, Capodanno D, Cosyns B, Crawford C, Davos CH, Desormais I, Di Angelantonio E, Franco OH, Halvorsen S, Hobbs FDR, Hollander M, Jankowska EA, Michal M, Sacco S, Sattar N, Tokgozoglu L, Tonstad S, Tsioufias KP, van Dis I, van Gelder IC, Wannan C, Williams B; ESC Scientific Document Group. 2021 ESC Guidelines on cardiovascular disease prevention in clinical practice. *Eur Heart J* 2021;**42**:3327–3337.
 56. Gencer B, Marston NA, Im K, Cannon CP, Sever P, Keech A, Braunwald E, Giugliano RP, Sabatine MS. Efficacy and safety of lowering LDL cholesterol in older patients: a systematic review and meta-analysis of randomised controlled trials. *Lancet* 2020;**396**:1637–1643.
 57. Blood Pressure Lowering Treatment Trialists' Collaboration. Age-stratified and blood-pressure-stratified effects of blood-pressure-lowering pharmacotherapy for the prevention of cardiovascular disease and death: an individual participant-level data meta-analysis. *Lancet* 2021;**398**:1053–1064.
 58. Cushman WC, Evans GW, Byington RP, Goff DC Jr, Grimm RH Jr, Cutler JA, Simons-Morton DG, Basile JN, Corson MA, Probstfield JL, Katz L, Peterson KA, Friedewald WT, Buse JB, Bigger JT, Hc G, Ismail-Beigi F. Effects of intensive blood-pressure control in type 2 diabetes mellitus. *N Engl J Med* 2010;**362**:1575–1585.
 59. Patel A, MacMahon S, Chalmers J, Neal B, Billot L, Woodward M, Marre M, Cooper M, Glasziou P, Grobbee D, Hamet P, Harrap S, Heller S, Liu L, Mancia G, Mogensen CE, Pan C, Poulter N, Rodgers A, Williams B, Bompont S, de Galan BE, Joshi R, Travert F. Intensive blood glucose control and vascular outcomes in patients with type 2 diabetes. *N Engl J Med* 2008;**358**:2560–2572.
 60. Dodd KS, Saczynski JS, Zhao Y, Goldberg RJ, Gurwitz JH. Exclusion of older adults and women from recent trials of acute coronary syndromes. *J Am Geriatr Soc* 2011;**59**:506–511.
 61. Kumar S, McDaniel M, Samady H, Forouzanfar F. Contemporary revascularization dilemmas in older adults. *J Am Heart Assoc* 2020;**9**:e014477.