

Antibody and T-Cell Responses 6 Months After Coronavirus Disease 2019 Messenger RNA-1273 Vaccination in Patients With Chronic Kidney Disease, on Dialysis, or Living With a Kidney Transplant

Jan-Stephan F. Sanders,¹ A. Lianne Messchendorp,^{1,a} Rory D. de Vries,^{2,a} Carla C. Baan,³ Debbie van Baarle,^{4,5} Rob van Binnendijk,⁵ Dimitri A. Diavatopoulos,^{6,7} Daryl Geers,² Katharina S. Schmitz,² Corine H. GeurtsvanKessel,² Gerco den Hartog,^{5,6} Marcia M. L. Kho,³ Marion P. G. Koopmans,² Renate G. van der Molen,⁷ Ester B. M. Remmerswaal,⁸ Nynke Rots,⁵ Ron T. Gansevoort,¹ Frederike J. Bemelman,^{9,a} Luuk B. Hilbrands,^{10,a} and Marlies E. J. Reinders^{3,a}; and the VACCINATION Immune Response Study (RECOVAC) Collaborators^b

¹Department of Internal Medicine, Division of Nephrology, University of Groningen, University Medical Center Groningen, Groningen, The Netherlands; ²Department of Viroscience, Erasmus Medical Center, Rotterdam, The Netherlands; ³Department of Internal Medicine, Nephrology and Transplantation, Erasmus MC Transplant Institute, Erasmus Medical Center, Rotterdam, The Netherlands; ⁴Department of Medical Microbiology and Infection Prevention, University Medical Center Groningen, Groningen, The Netherlands; ⁵Center for Infectious Disease Control, National Institute for Public Health and the Environment, Bilthoven, The Netherlands; ⁶Radboud Center for Infectious Diseases, Radboud University Medical Center Nijmegen, Nijmegen, The Netherlands; ⁷Department of Laboratory Medicine, Laboratory of Medical Immunology, Radboud Institute for Molecular Life Sciences, Radboud University Medical Center Nijmegen, Nijmegen, The Netherlands; ⁸Department of Experimental Immunology, Amsterdam Infection and Immunity Institute, Amsterdam University Medical Center, University of Amsterdam, Amsterdam, The Netherlands; ⁹Renal Transplant Unit, Amsterdam UMC, University of Amsterdam, Amsterdam, The Netherlands; and ¹⁰Department of Nephrology, Radboud University Medical Center, Radboud Institute for Health Sciences, Nijmegen, The Netherlands

Background. The immune response to COVID-19 vaccination is inferior in kidney transplant recipients (KTRs) and to a lesser extent in patients on dialysis or with chronic kidney disease (CKD). We assessed the immune response 6 months after mRNA-1273 vaccination in kidney patients and compared this to controls.

Methods. A total of 152 participants with CKD stages G4/5 (eGFR <30 mL/min/1.73 m²), 145 participants on dialysis, 267 KTRs, and 181 controls were included. SARS-CoV-2 Spike S1 specific IgG antibodies were measured using fluorescent bead-based multiplex-immunoassay, neutralizing antibodies to ancestral, Delta, and Omicron (BA.1) variants by plaque reduction, and T-cell responses by interferon- γ release assay.

Results. At 6 months after vaccination, S1-specific antibodies were detected in 100% of controls, 98.7% of CKD G4/5 patients, 95.1% of dialysis patients, and 56.6% of KTRs. These figures were comparable to the response rates at 28 days, but antibody levels waned significantly. Neutralization of the ancestral and Delta variants was detected in most participants, whereas neutralization of Omicron was mostly absent. S-specific T-cell responses were detected at 6 months in 75.0% of controls, 69.4% of CKD G4/5 patients, 52.6% of dialysis patients, and 12.9% of KTRs. T-cell responses at 6 months were significantly lower than responses at 28 days.

Conclusions. Although seropositivity rates at 6 months were comparable to rates at 28 days after vaccination, significantly decreased antibody levels and T-cell responses were observed. The combination of low antibody levels, reduced T-cell responses, and absent neutralization of the newly emerging variants indicates the need for additional boosts or alternative vaccination strategies in KTRs.

Clinical Trials Registration. NCT04741386.

Keywords. COVID-19; mRNA-1273 vaccine; chronic kidney disease; kidney transplantation; dialysis.

COVID-19–associated mortality risk is 3- to 4-fold higher in patients with severely impaired kidney function, patients on dialysis, and kidney transplant recipients (KTRs) compared with

the general population [1]. Therefore, sustained effectiveness of COVID-19 vaccination in the face of novel emerging variants is of great importance for these patients.

We recently performed a clinical trial with approximately 800 participants to assess the immunogenicity, tolerability, and safety of the mRNA-1273 COVID-19 vaccine in kidney patients [2]. In particular, KTRs showed a combination of low antibody and nondetectable T-cell responses 28 days following the second vaccination. Notably, almost all dialysis patients and patients with chronic kidney disease (CKD G4/5) showed seroconversion, but antibody levels were significantly lower compared with controls [3]. This is in accordance with other smaller studies that described lower seroconversion rates in patients on dialysis and

Received 20 April 2022; editorial decision 28 June 2022; published online 9 August 2022

^aA. L. M., R. D. dV., F. J. B., L. B. H., and M. E. J. R. contributed equally to this work.

^bThe RECOVAC Collaborators are listed in the Acknowledgments section.

Correspondence: J.-S. F. Sanders, Department of Internal Medicine, Division of Nephrology, University Medical Center Groningen, Groningen, The Netherlands (j.sanders@umcg.nl).

Clinical Infectious Diseases® 2023;76(3):e188–e99

© The Author(s) 2022. Published by Oxford University Press on behalf of Infectious Diseases Society of America.

This is an Open Access article distributed under the terms of the Creative Commons Attribution License (<https://creativecommons.org/licenses/by/4.0/>), which permits unrestricted reuse, distribution, and reproduction in any medium, provided the original work is properly cited. <https://doi.org/10.1093/cid/ciac557>

in transplant recipients 28 days after 2 doses of mRNA vaccines [4, 5].

mRNA vaccines have recently been shown to induce durable immunological memory, with protection against newly emerging SARS-CoV-2 variants in healthy individuals [6, 7]. However, especially among older individuals and patients on immunosuppression, antibody levels rapidly wane over a 6-month period [8]. These data underline the importance of long-term follow-up of high-risk patients with kidney disease to assess the need for additional boosts or alternative vaccination strategies.

We studied the concentration of spike S1 binding antibodies; the level of neutralizing antibodies to the ancestral, Delta, and Omicron (BA.1) variants; and T-cell responses at 6 months after mRNA-1273 COVID-19 vaccination in patients with severely impaired kidney function, patients on dialysis, KTRs, and controls without known kidney disease.

METHODS

The design of the Dutch Renal patients COVID-19 VACcination (RECOVAC) Immune Response study was published previously [2]. Ethical approval was obtained from the Dutch Central Committee on Research Involving Human Subjects and the local ethics committees of the participating centers.

Study Participants and COVID-19 Vaccination

Four cohorts were included in the study. Cohort A (controls) consisted of participants without kidney disease (eGFR >45 mL/min/1.73 m²), cohort B of patients with severely impaired kidney function (eGFR <30 mL/min/1.73 m² or CKD stages G4/5), cohort C of patients on hemodialysis or peritoneal dialysis, and cohort D of KTRs. The control cohort included partners, siblings, or household members of participants in cohorts B, C, and D. All participants received 2 mRNA-1273 COVID-19 vaccinations (Moderna Biotech Spain, S.L.) with an interval of 28 days. Blood samples were collected at baseline, prior to the second vaccination, and 28 days and 6 months after the second vaccination. Patients who experienced COVID-19 before or during the study were excluded.

SARS-CoV-2 Spike S1-Specific Immunoglobulin G Antibody Response and Virus Neutralizing Antibodies

SARS-CoV-2 spike S1-specific IgG antibodies were measured in serum samples using a validated fluorescent bead-based multiplex-immunoassay, as previously described, and expressed as international binding antibody units per milliliter (BAU/mL) [9, 10]. Participants were classified as seropositive or seronegative; the cutoff was set at S1-specific IgG antibody concentration ≥ 10 BAU/mL [10, 11]. Nucleocapsid antibodies were measured at all time points using multiplex immunoassay,

as previously described, and classified as positive or negative [12].

Plaque reduction neutralization tests against the ancestral SARS-CoV-2 and the Delta and Omicron variants were performed as described previously [7, 11]. For feasibility, it was a priori decided to measure neutralizing antibodies only in a random sample of 20 patients per group with measurable S1-specific IgG antibodies at 6 months included in 1 of the participating centers (Erasmus MC Rotterdam).

SARS-CoV-2-Specific T-Cell Response

SARS-CoV-2-specific T-cell responses were measured in all patients participating at the Erasmus MC Rotterdam including 40 controls, 36 CKD G4/5 patients, 38 dialysis patients, and 62 KTRs. Measurement was performed using a commercially available interferon (IFN)- γ release assay (IGRA) according to the manufacturer's instructions (QuantIFERON, QIAGEN) [13]. Results from the Antigen-2 (peptides covering the entire S protein) assay were expressed in IU/mL after subtraction of the negative control values as interpolated from a standard calibration curve.

Antibody Decay

Previous studies have shown that decay of SARS-CoV-2-specific antibodies most likely follows an exponential pattern over time [14]. We therefore calculated decay in antibodies over time using an exponential formula in order to estimate antibody half-life and time to reach certain antibody levels as follows: $y = a \times b^X$, where y is the S1 IgG antibody level at 6 months, a is the S1 IgG antibody level at 28 days, b is the slope, and X is time. The slope b was calculated as: $\log_{10}(b) = (\log_{10}(y) - \log_{10}(a)) / (X(y) - X(a))$. Half-life was subsequently calculated as: $\text{half-life} = \log_{10}(0.5) / \log_{10}(b)$. Time to reach a certain S1 IgG antibody level (c) was calculated as: $\text{time until } c = X(a) + (\log_{10}(c) - \log_{10}(a)) / \log_{10}(b)$.

Statistical Analyses

Continuous data are presented as mean with standard deviation or as median and interquartile interval in case of nonnormal distribution. Categorical data are presented as percentages. Differences between patient groups and the control group were tested using the independent t test, Mann-Whitney U test, or Pearson χ^2 test depending on data distribution, with Bonferroni correction for multiple testing. Differences within study cohorts over time were tested using the paired sample t test, Wilcoxon signed rank test, or Pearson χ^2 test depending on data distribution. The correlation between the S1 IgG antibody levels measured at 28 days and 6 months after the second vaccination was tested by performing Pearson correlation. All analyses were performed with the statistical software IBM SPSS Statistics version 23.0 (SPSS Inc, Chicago, IL).

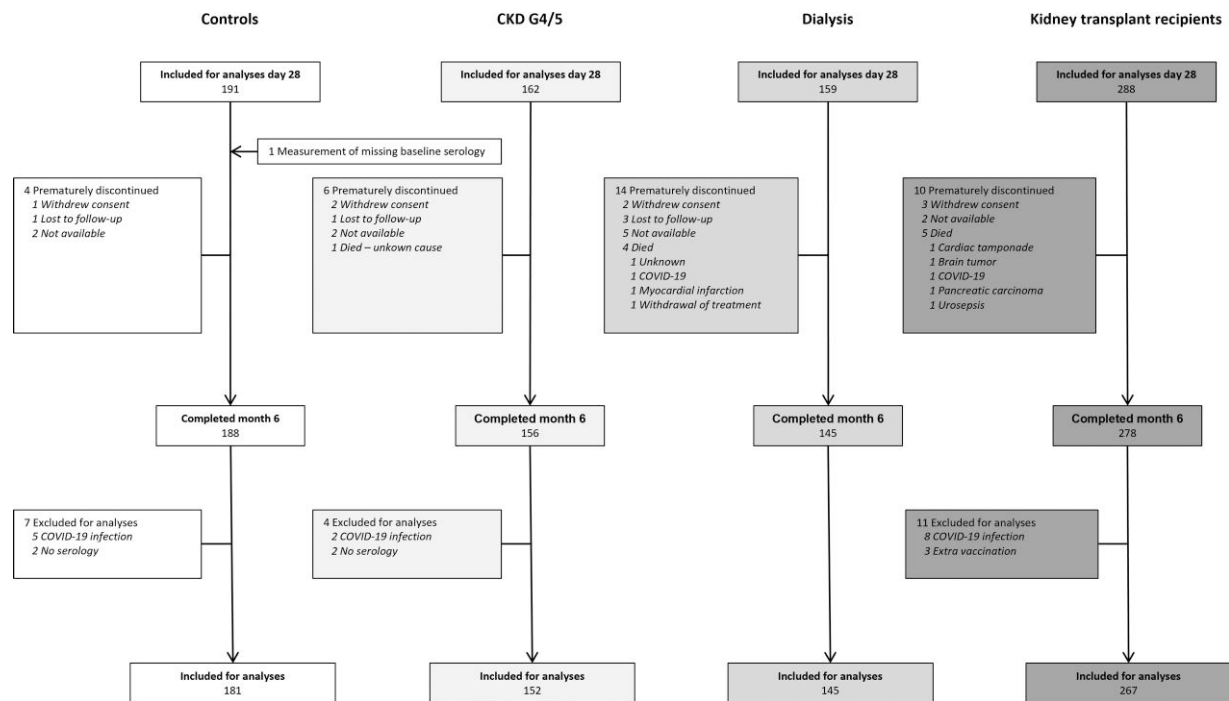


Figure 1. Participant enrollment and outcomes 6 months after second vaccination. Abbreviations: CKD G4/5, chronic kidney disease stages 4/5; COVID-19, coronavirus disease 2019.

Figures were created with the software GraphPad Prism version 5.00 (GraphPad Software, San Diego, CA). A 2-sided P value $<.05$ was adopted to denote statistical significance and corrected in case of multiple testing using Bonferroni correction unless stated otherwise.

RESULTS

Baseline Characteristics

A flowchart of study enrollment is depicted in [Figure 1](#). In total, 181 controls, 152 patients with CKD G4/5, 145 dialysis patients, and 267 KTRs were included for the analysis of binding antibody levels 6 months after vaccination. Baseline characteristics of these participants are shown in [Table 1](#).

SARS-CoV-2 Spike S1-Specific IgG Antibody Response at 6 Months

All controls retained seropositivity 6 months after vaccination. The seropositivity rates in patients with CKD G4/5 and patients on dialysis were 98.7% and 95.1%, respectively (compared with 100% and 99.3% at day 28). In KTRs, the seropositivity rate was 57.7% at day 28; of these patients, 14.9% ($n = 23$) became seronegative at 6 months ($P < .001$). Remarkably, 17.7% ($n = 20$) of seronegative KTRs at day 28 became seropositive at 6 months ([Figure 2A](#)). Overall, 56.6% of KTRs were seropositive at month 6.

In all 4 groups, the S1-specific IgG antibody levels declined significantly from day 28 to month 6, but with good correlation between the 2 time points ($R = 0.88$, $P < .001$) ([Supplementary Figure 1](#)). In controls, levels decreased 7.7-fold from 3009 to 380 BAU/mL. In CKD G4/5 patients, levels decreased 7.5-fold from 2380 to 309 BAU/mL; in dialysis patients, 9-fold from 1585 to 165 BAU/mL; and in KTRs, 2.3-fold from 25 to 16 BAU/mL (all $P < .001$; [Figure 2B](#)). At 6 months after vaccination, S1-specific IgG antibody levels in dialysis patients and KTRs were significantly lower when compared with controls (both $P < .001$). While all CKD G4/5 patients, dialysis patients, and controls had a decrease in S1-specific IgG antibody levels, 32 KTRs (18%) had an increase in S1-specific IgG antibody levels. None of these patients reported having contracted COVID-19 or had detectable nucleocapsid antibodies.

Decay in S1-Specific IgG Antibodies and Predictors of Decay

Since significant waning of S1-specific IgG antibody levels was detected at 6 months after vaccination in all groups, we calculated the antibody half-life assuming an exponential decay. The overall half-life in the entire cohort was 52 days (41–69), and this was comparable between the 4 groups ([Table 2](#), [Figure 3](#)). With an exponential decay model, we calculated the time until seronegativity. This time was 451 days after the second vaccination in controls and 442 days in CKD G4/5 patients, whereas it was significantly shorter at 381 days in dialysis

Table 1. Baseline Characteristics per Study Group

Characteristic	Chronic Kidney Disease			
	Control (n = 181)	Stages 4/5 (n = 152)	Dialysis (n = 145)	Kidney Transplant Recipient (n = 267)
Female, n (%)	107 (59.1)	53 (34.9)	48 (33.1)	123 (46.1)
White, n (%)	167 (92.3)	135 (88.8)	121 (83.4)	243 (91.0)
Age, years	58.4 ± 12.9	60.6 ± 13.4	60.0 ± 13.8	55.9 ± 14.1
Body mass index, kg/m ²	27.5 ± 5.3	27.8 ± 5.2	26.7 ± 5.7	27.0 ± 4.6
Systolic blood pressure, mm Hg	146.3 ± 22.7	151.1 ± 24.1	139.2 ± 25.8	146.4 ± 21.3
Diastolic blood pressure, mm Hg	84.8 ± 11.6	84.1 ± 11.9	78.2 ± 16.5	84.5 ± 10.9
Current smoking, n (%)	31 (17.1)	23 (15.1)	33 (22.8)	28 (10.5)
Current alcohol consumption, n (%)	108 (59.7)	60 (39.5)	32 (22.1)	105 (39.3)
Number of comorbidities	0 (0–1)	1 (1–2)	1 (1–2)	1 (1–2)
Comorbidity, n (%)				
Hypertension	49 (27.1)	126 (82.9)	96 (66.2)	219 (82.0)
Diabetes mellitus	17 (9.4)	40 (26.3)	35 (24.1)	56 (21.0)
History of coronary artery disease	9 (5.0)	33 (21.7)	33 (22.8)	35 (13.1)
Heart failure	2 (1.1)	12 (7.9)	10 (6.9)	13 (4.8)
Chronic lung disease	14 (7.7)	16 (10.5)	14 (9.7)	12 (4.5)
History of malignancy ^a	9 (5.0)	20 (13.2)	34 (23.4)	40 (15.0)
Autoimmune disease	4 (2.2)	3 (2.0)	5 (3.4)	14 (5.2)
Lymphocytes, 10 ⁹ /L	2.0 (1.6–2.5)	1.6 (1.2–2.0)	1.2 (0.9–1.6)	1.3 (0.9–1.9)
Estimated glomerular filtration rate, mL/min/1.73 m ²	82.3 ± 18.5	17.7 ± 6.1	...	49.5 ± 18.9
Primary renal diagnosis, n (%)				
Primary glomerulonephritis	...	18 (11.8)	14 (9.7)	53 (19.9)
Pyelonephritis	...	1 (0.7)	1 (0.7)	54 (1.5)
Interstitial nephritis	...	7 (4.6)	4 (2.8)	9 (3.4)
Familial/hereditary renal diseases	...	25 (16.4)	19 (13.1)	51 (19.1)
Congenital diseases	...	6 (3.9)	5 (3.4)	18 (6.7)
Vascular diseases	...	31 (20.4)	27 (18.6)	26 (9.7)
Secondary glomerular/systemic disease	...	4 (2.6)	7 (4.8)	12 (4.5)
Diabetic kidney disease	...	9 (5.9)	21 (14.5)	10 (3.7)
Other	...	29 (19.1)	24 (16.6)	39 (14.6)
Unknown	...	22 (14.4)	23 (15.9)	45 (16.8)
Dialysis characteristics, n (%)				
Hemodialysis	110 (75.9)	...
Peritoneal dialysis	35 (24.1)	...
Time on dialysis, months	30.0 (14.0–69.8)	...
Transplant characteristics				
First kidney transplant, n (%)	208 (77.9)
Time after last transplantation, years	6.0 (2.0–13.0)
Last transplant				
Living, n (%)	183 (68.5)
Preemptive, n (%)	98 (36.7)
Number of immunosuppressive agents				
Immunosuppressive treatment at baseline, n (%)	2 (2–3)
Immunosuppressive treatment at baseline, n (%)				
Steroids	203 (76.0)
Azathioprine	32 (12.0)
Mycophenolate mofetil	183 (68.5)
Calcineurin inhibitor	221 (82.8)
mTOR inhibitor	17 (6.4)
Other	5 (1.9)
Induction with rituximab last year, n (%)	2 (0.7)
Received kidney transplant after baseline, n (%)	...	13 (8.6)	13 (9.0)	1 (0.4)
Start dialysis after baseline, n (%)	...	9 (5.9)	...	1 (0.4)
Immunosuppressive treatment at month 6, n (%)				
Steroids	...	13 (8.6)	11 (7.6)	196 (73.4)
Azathioprine	1 (0.7)	31 (11.6)

Table 1. Continued

Characteristic	Control (n = 181)	Chronic Kidney Disease		Kidney Transplant Recipient (n = 267)
		Stages 4/5 (n = 152)	Dialysis (n = 145)	
Mycophenolate mofetil	...	11 (7.2)	9 (6.2)	181 (67.8)
Calcineurin inhibitor	...	13 (8.6)	11 (7.6)	214 (80.1)
mTOR inhibitor	...	2 (1.3)	2 (1.4)	17 (6.4)

Variables are presented as mean \pm standard deviation or as median (interquartile interval) in case of nonnormal distribution.

Abbreviation: mTOR, mechanistic target of rapamycin.

^aIncluding melanomas, excluding all other skin malignancies.

patients and 308 days in KTRs (both $P < .001$ compared with the control group). Several characteristics differed significantly between participants in whom S1-specific IgG antibody levels declined faster (half-life below 52 days) or slower (half-life above 52 days) (Supplementary Table 1), but these characteristics were not consistent between the different groups.

Neutralizing Antibodies Targeting SARS-CoV-2 Variants

In a selection of 20 participants per group with S1-specific IgG antibodies, neutralization against the ancestral SARS-CoV-2 and the Delta and Omicron (BA.1) variants was assessed (Figure 4). Neutralizing antibodies to the ancestral and Delta SARS-CoV-2 strains were detected in all controls, CKD G4/5 patients, and patients on dialysis at 28 days (Figure 4). At 6 months, in several participants in the control, CKD G4/5, and dialysis groups, levels of Delta virus neutralizing antibodies had dropped below the detection levels. Levels of neutralizing antibodies were significantly lower at 6 months compared with 28 days after the second vaccination (Figure 4). In KTRs, not all participants showed neutralizing antibodies against the ancestral and Delta variants. Notably, waning of neutralizing antibodies was not apparent in KTRs at 6 months compared with 28 days post vaccination. Levels of neutralizing antibodies against the ancestral strain and Delta strain correlated with the levels of S1-specific IgG antibodies at 28 days and 6 months after the second vaccination (ancestral/wild type $R = .88$ and $R = 0.85$, respectively, both $P < .001$; Delta $R = 0.83$ and $R = 0.85$, respectively, both $P < .001$; Supplementary Figure 2A and 2B). Notably, neutralization of the newly emerged Omicron variant was barely detectable in any of the groups, both at 28 days and 6 months after vaccination. Correlation plots of neutralizing antibodies against Omicron and S1-specific IgG antibodies showed that Omicron was only neutralized at high titers of S1-specific IgG, both at 28 days and 6 months after the second vaccination ($R = 0.51$ and $R = 0.55$, both $P < .001$; Supplementary Figure 2C).

SARS-CoV-2-Specific T-Cell Responses at 6 Months

CoV-2-specific T-cell response (defined as IFN- γ concentration ≥ 0.15 IU/mL after specific stimulation) was observed in 87.5% and 75.0% of controls, 77.8% and 69.4% of CKD G4/5 patients,

and 73.3% and 52.6% of dialysis patients at 28 days and 6 months, respectively ($P < .001$, $P = .002$, and $P < .001$, respectively; Figure 5A). A detectable T-cell response was observed in 17.7% of KTRs at day 28; of these patients, 45.5% ($n = 5$) had a nondetectable T-cell response at 6 months ($P < .001$).

T-cell responses correlated to the levels of S1-specific binding antibodies, both at 28 days and 6 months after the second vaccination ($R = 0.64$ and $R = 0.59$, respectively, both $P < .001$; Supplementary Figure 3). The median IFN- γ level at 6 months tended to be lower in CKD G4/5 patients (0.28 IU/mL) and were significantly lower in dialysis patients (0.21 IU/mL) compared with controls (0.76 IU/mL; $P = .06$ and $P = .04$, respectively). Median IFN- γ levels were also significantly lower in KTRs at 0.02 IU/mL when compared with controls ($P < .001$). Nevertheless, in KTRs, median IFN- γ levels at 6 months were not significantly lower vs at 28 days, opposed to an observed significant decline in controls, CKD G4/5 patients, and dialysis patients (Figure 5B).

Of 62 KTRs, 3 (4.8%) showed an increase in IGRA response, defined as >0.15 IU/mL at both time points, with doubling between day 28 and month 6. An increase in SARS-CoV-2-specific T-cell response between day 28 and month 6 was observed in 2 controls (5.0%), 4 CKD G4/5 patients (11.1%), and no dialysis patients. There was no relation between a rise in S1 antibody titers and an increase in T-cell response in the KTRs.

Safety

Overall, 25 safety events were reported between day 28 and month 6. Significantly more safety events occurred in dialysis patients and KTRs compared with controls (6.2% and 4.5% vs 0%, $P = .003$ and $P = .01$, respectively). None were classified as related to COVID-19 vaccination (Table 3). In total, 10 patients died due to variable causes; none of these cases were classified as related to COVID-19 vaccination. Finally, in the KTR group, 1 participant experienced allograft rejection, which was not related to COVID-19 vaccination, and recovered after treatment with methylprednisolone and subsequently thymoglobulin.

DISCUSSION

In this study, we demonstrate waning of binding antibodies, neutralizing antibodies, and T-cell responses in different

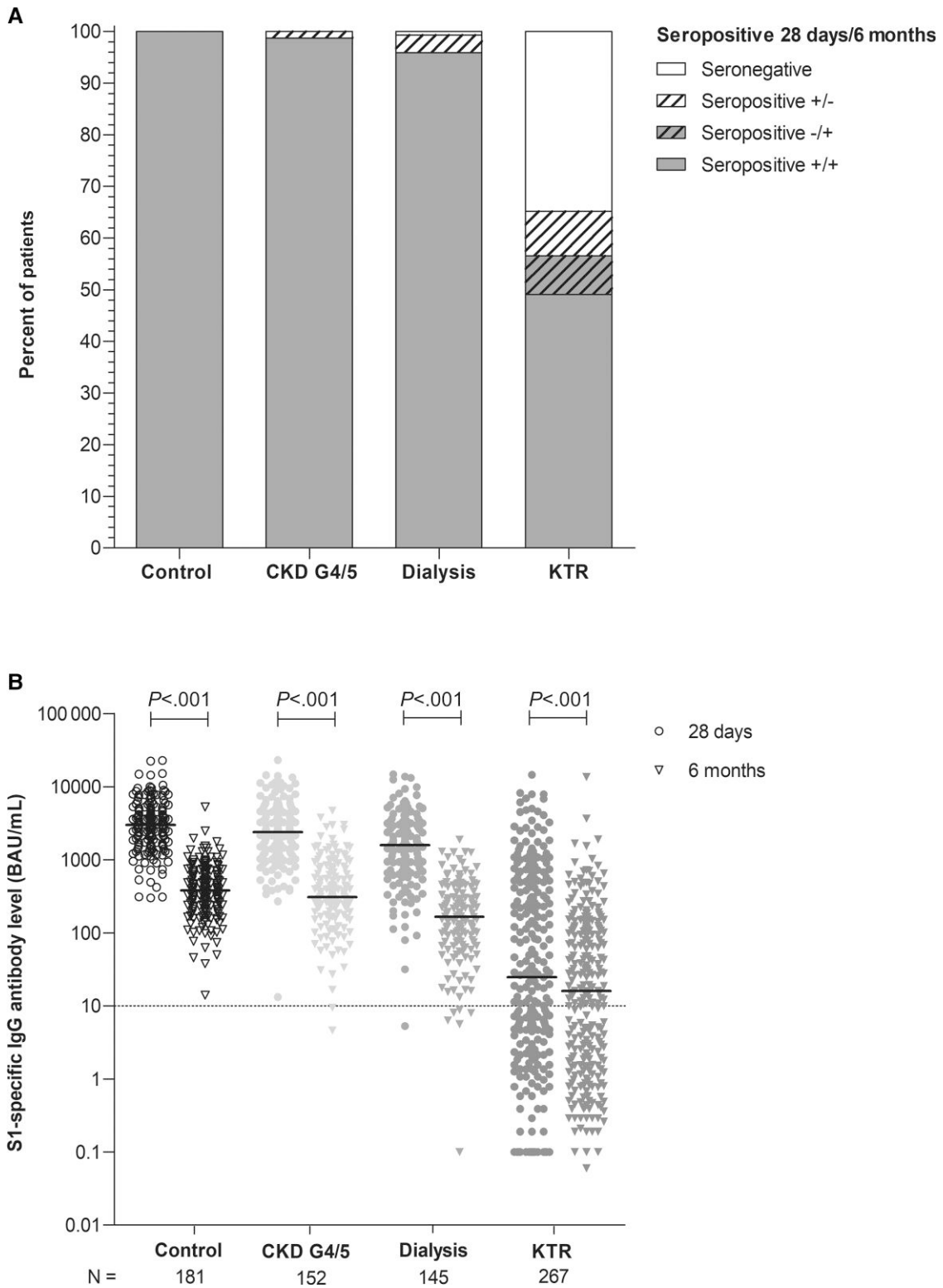


Figure 2. Seropositivity rate (A) and S1-specific IgG antibody levels (B) at day 28 and month 6 after second coronavirus disease 2019 vaccination per cohort. Depicted are scatter dot plots with a line indicating the median level. *P* values were calculated using the Wilcoxon signed rank test. Abbreviations: BAU/mL, binding antibody units per milliliter; CKD G4/5, chronic kidney disease stages 4/5; IgG, immunoglobulin G; KTR, kidney transplant recipient.

Table 2. Decay in S1-Specific Immunoglobulin G Antibody Level per Study Group Assuming an Exponential Decay

Variable	Control	Chronic Kidney Disease Stages 4/5	Dialysis	Kidney Transplant Recipient
Half-life, days	52.6 (43.2–65.5)	52.4 (43.4–72.6)	49.6 (40.4–63.5)	52.9 (32.7–81.3)
Seroresponse defined as ≥ 10 BAU/mL at day 28, n (%)	181 (100)	152 (100)	144 (100)	154 (57.7)
S1 immunoglobulin G level (BAU/mL) in seropositive participants	3009 (1812–4797)	2380 (1267–4569)	1587 (702–3121) ^a	310 (57.1–1041) ^a
Time to 10 BAU/mL (days) in seropositive participants	451 (378–569)	442 (368–610)	381 (313–494) ^a	308 (119–473) ^a

Variables are presented as mean \pm standard deviation, as median (interquartile interval) in case of nonnormal distribution, or as number (percentage) in case of categorical data. *P* values were calculated using the Mann–Whitney *U* test with the control group as the reference group. Bonferroni correction was applied for multiple testing.

Abbreviation. BAU/mL, binding antibody units per milliliter.

^a*P* < .001.

groups of kidney patients at 6 months after vaccination with the mRNA-1273 COVID-19 vaccine. The slopes of these decreases in vaccine-induced immunity were similar among patient groups and controls. Consequently, SARS-CoV-2-specific antibodies and T cells became undetectable in a substantial proportion of dialysis patients, especially KTRs, when compared with controls. At 6 months after vaccination, neutralizing antibodies to the circulating Omicron variant were barely detectable in any of the groups.

Until now, data on durability of the response to vaccination were not available from adequately powered and controlled vaccination studies in kidney patients, although stronger waning of antibodies in dialysis patients was previously observed [15]. Additionally, a study in 312 solid organ transplant recipients showed that seropositivity rates after mRNA vaccination remained relatively stable until 6 months [16]. Interestingly, similar to our observations, that study also detected an increase in seropositivity in 43 solid organ transplant recipients (14.7%), but the authors could not exclude asymptomatic infections as a cause of this increase. This phenomenon of increasing antibody concentrations was also observed by Hall et al in a small subgroup of transplant recipients who received placebo vaccination but nevertheless had an increase in anti-Receptor Binding Domain antibody levels [17]. We detected an increase in antibody concentration in 18% of the KTRs between 28 days and 6 months after vaccination, while these participants had not reported SARS-CoV-2 infection and we did not detect nucleocapsid-specific antibodies. This late increase in antibody levels could be explained by ongoing delayed mRNA vaccine-induced B-cell stimulation and/or delayed plasma cell differentiation in KTRs [18].

Neutralizing antibodies are regarded as an important correlate of protection against developing severe COVID-19 [19, 20]. We show that the majority of kidney patients with measurable binding antibodies can still neutralize both the ancestral SARS-CoV-2 variant, as well as the Delta variant. Neutralizing antibodies were significantly lower in KTRs, although waning was less pronounced in this group. In accordance with current literature, cross-neutralization of the emerging Omicron variant (BA.1) was strongly reduced, and

almost none of the sera obtained 6 months after vaccination neutralized this variant [7, 21–23].

The absence of cross-neutralization explains that reinfections and breakthrough infections with the Omicron variant are now frequently seen. The Omicron (BA.1) variant is the first variant that formed a novel antigenic cluster [24], explaining the reduced vaccine efficacy against this variant. Fortunately, a lower risk of severe disease after infection with this variant was described [25]. This is potentially due to inherent differences in viral properties between the Omicron and previously circulating variants. The absence of cross-neutralization of Omicron suggests that immunological mechanisms other than virus neutralization are involved in cross-protection against severe disease. These might include effector functions mediated by nonneutralizing antibodies and virus-specific T cells. We therefore speculate that the combination of low binding antibody levels and reduced T-cell responses, in conjunction with lack of neutralization of the Omicron variant, as observed in KTRs, could predispose to more severe disease upon infection with the Omicron variant.

Thus far, limited data on virus-specific T-cell responses in high-risk groups of kidney patients have been reported, especially during standardized follow-up. In healthy individuals, cell-mediated immune responses are detectable up to at least 8 months after vaccination [6, 7]. We observed a trend toward waning T-cell responses in this study. However, compared with the antibody concentrations, T-cell responses were relatively stable. T-cell responses were undetectable in the peripheral blood obtained from the majority of KTRs 6 months after vaccination. However, the fact that we could not measure SARS-CoV-2-specific T cells in the circulation does not exclude that functional T cells could have been present in the lymphoid organs to play a role in B-cell activation and antibody production. An in-depth analysis of virus-specific T cells is required to better understand the differences in phenotype and functionality of T cells between groups.

We report the immunogenicity of mRNA-1273 vaccination 6 months after completion of the 2-shot regimen, but a third vaccination had already been implemented in clinical practice in high-risk groups. Our data show that 6 months after the

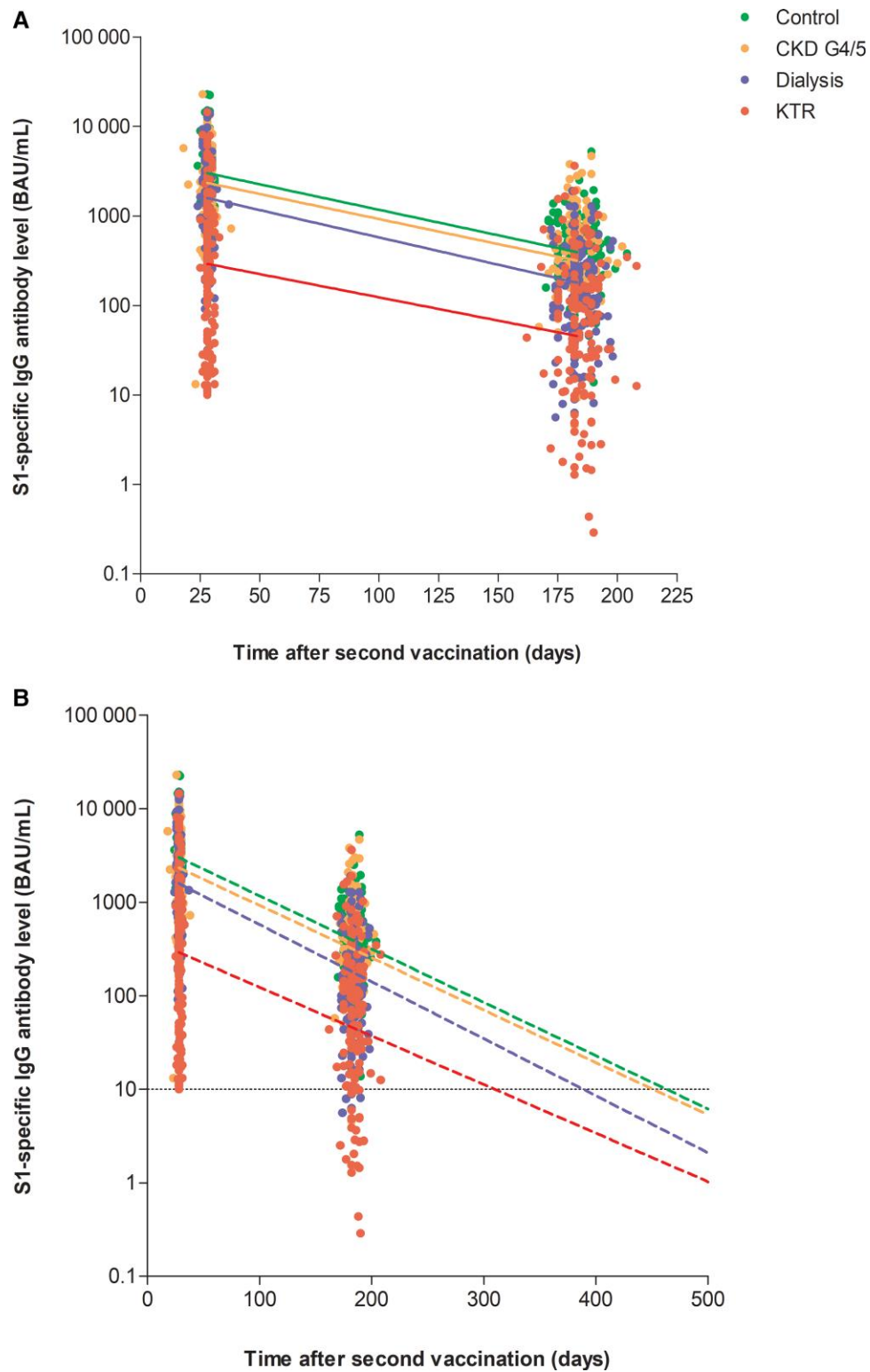


Figure 3. Decay in antibodies according to exponential decay model. *A*, Decay per group in participants with antibody value at day 28 ≥ 10 BAU/mL. *B*, Estimated time until 10 BAU/mL. Abbreviations: BAU/mL, binding antibody units per milliliter; CKD G4/5, chronic kidney disease stages 4/5; IgG, immunoglobulin G; KTR, kidney transplant recipient.

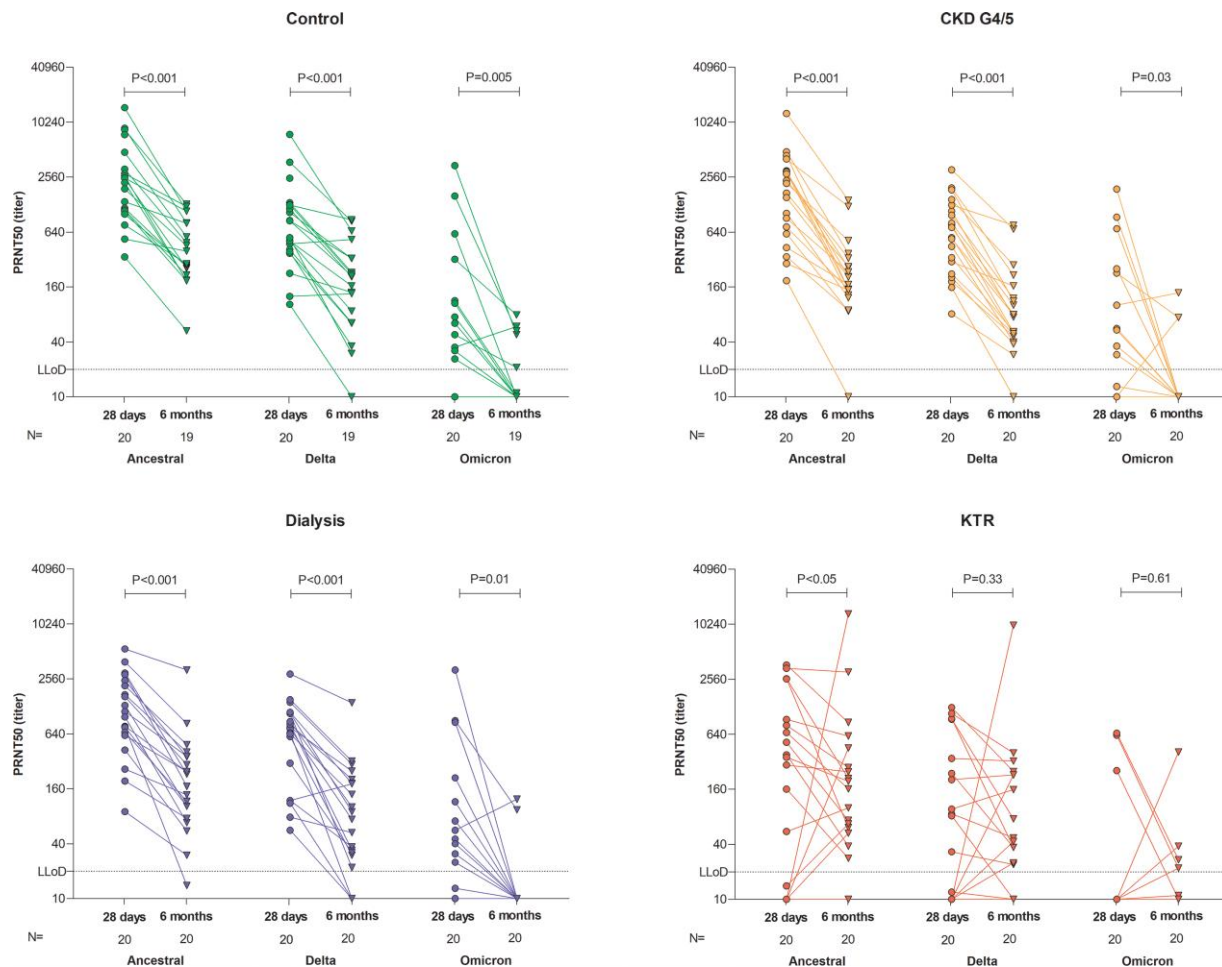


Figure 4. Levels of neutralizing antibodies against the ancestral SARS-CoV-2 (wild type) and the recently emerged Delta and Omicron variants per subgroup and compared with level of neutralizing antibodies at 6 months. The dotted horizontal line indicates the lower limit of detection of neutralization (titer of 20). *P* values were calculated using the Wilcoxon signed rank test. Abbreviations: CKD G4/5, chronic kidney disease stages 4/5; KTR, kidney transplant recipient; LLoD, lower limit of detection; PRNT50, 50% plaque reduction neutralization test.

second vaccination, especially in KTRs, the levels of neutralizing antibodies against the ancestral and emerging variants as well as T-cell responses are low or not detectable. This underlines the importance of the third vaccination as a standard part of a complete COVID-19 vaccination schedule for KTRs. Moreover, when an increased COVID-19 risk exists, this vulnerable patient group should be protected by masks and social distancing as advised by the Centers for Disease Control and Prevention [26]. Finally, AZD7442 (Evusheld) could be considered as preexposure prophylaxis in severely immunocompromised patients. Additionally, our data show a similar half-life of antibodies in all groups. Although seroconversion rates were high in CKD G4/5 and dialysis patients, antibody levels in these patient groups were lower than in controls. This suggests that the interval between the second and third vaccination should be shorter in these patients than in the general population.

The main strength of our study is the prospective design with the inclusion of different kidney patients as well as a control cohort. The study assessed both (functional) antibody responses as well as T-cell responses at predefined fixed time points using standardized assays. Study limitations include that all patients received the mRNA-1273 (Moderna) COVID-19 vaccine, which precludes conclusions about the response to other vaccines, and that patients using immunosuppressive therapy were excluded at baseline from the CKD G4/5 as well as dialysis cohorts, which may have skewed the seroconversion rate and waning of antibodies in these patients. On the other hand, this enabled specific evaluation of the role of impaired kidney function and kidney function replacement treatment.

In conclusion, although seropositivity rates at 6 months after vaccination were comparable to response rates 28 days after vaccination, significantly decreased antibody levels and T-cell

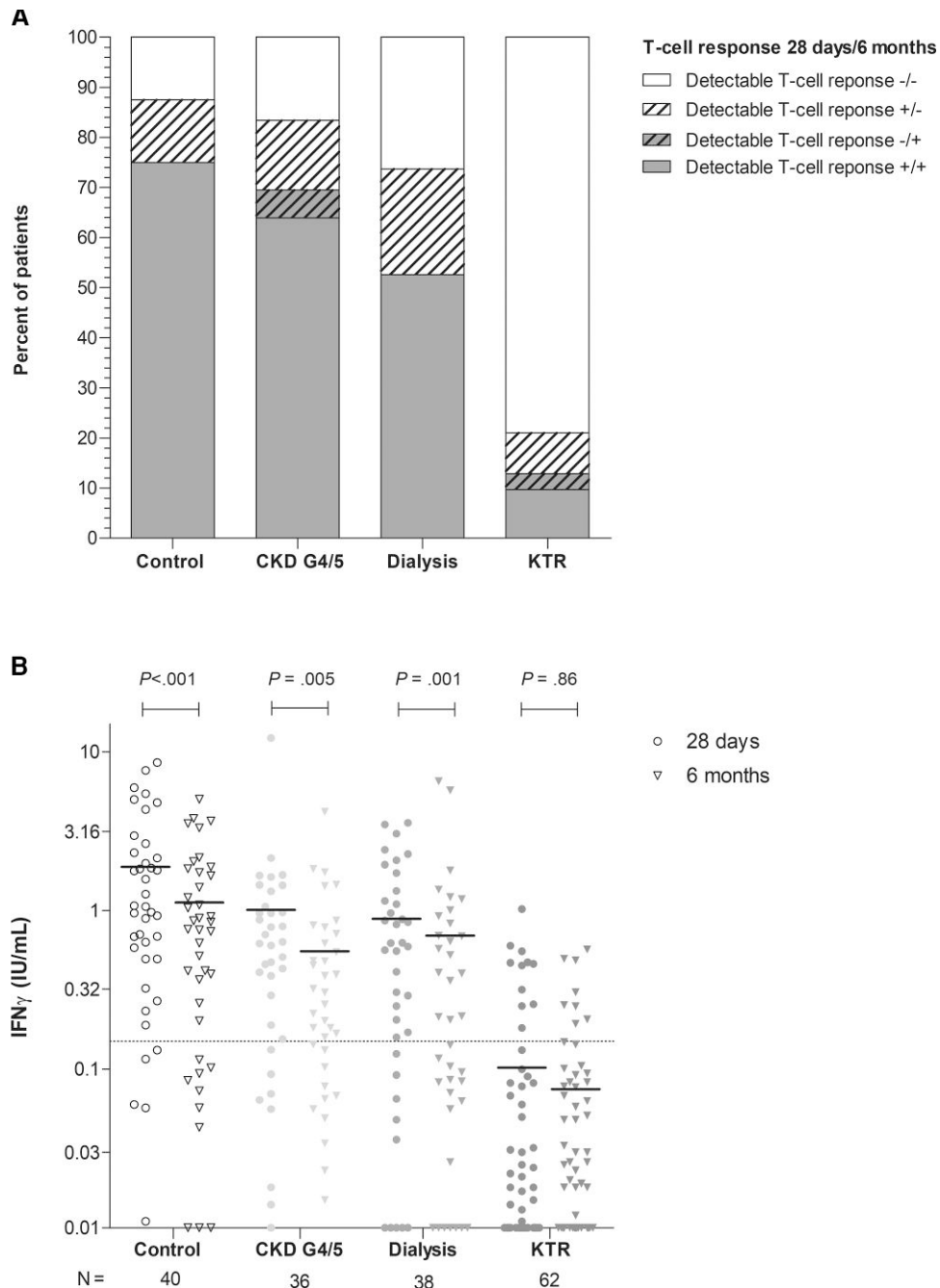


Figure 5. SARS-CoV-2-specific T-cell response in all participants at 1 of the participating centers. *A*, Percentage of T-cell responders per group 6 months after vaccination (defined as Antigen-2 ≥ 0.15 IU/mL). *B*, Individual IFN- γ levels per group, with the horizontal line representing the median value. Dotted horizontal line indicates the threshold of detectable T-cell response (≥ 0.15 IU/mL). *P* values were calculated using the Wilcoxon signed rank test. Abbreviations: CKD G4/5, chronic kidney disease stages 4/5; IFN- γ , interferon gamma; KTR, kidney transplant recipient.

responses were observed in all groups. In particular, KTRs displayed a combination of low antibody levels, few detectable T-cell responses, and lack of neutralization of circulating variants 6 months after vaccination. Alternative strategies to improve immunogenicity of COVID-19 vaccines, including additional boosts with (variant-adapted) COVID-19 vaccines,

should be considered to reduce the risk of severe disease in these vulnerable patients.

Supplementary Data

Supplementary materials are available at *Clinical Infectious Diseases* online. Consisting of data provided by the authors to benefit the reader, the posted

Table 3. List of Serious Adverse Events Between 28 Days and 6 Months After Second Vaccination

Serious Adverse Events	Control (N = 181)	Chronic Kidney Disease Stages 4/5 (N = 152)	Dialysis (N = 145)	Kidney Transplant Recipient (N = 267)
Any serious adverse event, n (%)	0	4 (2.6)	9 (6.2)	12 (4.5)
Related to vaccination, n (%)	...	0	0	0
Not related to vaccination, n (%)				
Urinary tract infection	...	2 (1.3)	1 (0.7)	7 (2.6)
Malaise	...	2 (1.3)	...	1 (0.4)
Colitis	1 (0.7)	...
Fever	2 (1.4)	2 (0.7)
Fluid overload	1 (0.7)	...
Syncope	1 (0.7)	...
Cholelithiasis	1 (0.7)	...
Infected hematoma	...	1 (6.6)	1 (0.7)	...
Varicella zoster infection	1 (0.4)
Acute renal insufficiency	1 (0.4)
Femoropopliteal artery bypass thrombosis	1 (0.4)
Abdominal pain	1 (0.7)	...
Rectal blood loss	1 (0.7)	...
Amputation	1 (0.7)	...
Hypocalcemia	1 (0.4)
Acute renal rejection	1 (0.4)
Post-transplantation lymphoproliferative disorder	1 ^a (0.7)	...
Cytomegalovirus infection	1 (0.7)	...

Variables are given as number and percentage. *P* values were calculated using the χ^2 test.

^aParticipant received a kidney transplant after baseline visit.

materials are not copyrighted and are the sole responsibility of the authors, so questions or comments should be addressed to the corresponding author.

Notes

Author contributions. R. G. and J. S. designed the study protocol. F. B., M. K., M. R., C. B., D. vB., R. vdM., E. R., R. dV., and L. H. contributed to the protocol design. D. D., M. K., A. M., and P. V. provided intellectual content of critical importance to the study. A. M., C. B., R. vB., D. D., D. G., G. dH., C. G., and R. dV. were involved with data acquisition. N. R. provided the coronavirus disease 2019 vaccine. M. K., M. R., C. B., D. vB., F. B., D. D., R. G., A. M., R. vdM., C. G., R. dV., L. H., and J. S. participated in the study, analysis of the data, and preparation of the manuscript.

Acknowledgments. The authors thank the VACcination Immune Response Study (RECOVAC) Collaborators: Alferso C. Abrahams, MD, PhD,¹ Marije C. Baas, MD, PhD,² Pim Bouwmans, MD,³ Marc A. G. J. ten Dam, MD, PhD,⁴

Lennert Gommers, BSc,⁵ Sophie C. Frölke,⁶ Dorien Standaar,⁶ Marieke van der Heiden, PhD,⁷ Celine Imhof, MD,^{7,8} Yvonne M. R. Adema,⁸ Reshwan K. Malahe, MD,⁵ Marieken J. Boer-Verschragen,⁵ Wouter B. Mattheussens, MSc,⁹ Ria Philippen,⁹ Djenolan van Mourik, BSc,⁵ Susanne Bogers, MSc,⁵ Laura L. A. van Dijk,⁵ Marc H. Hemmelder, MD, PhD,³ and Aiko P. J. de Vries, MD, PhD¹⁰

¹Department of Nephrology and Hypertension, University Medical Center Utrecht, Utrecht, The Netherlands; ²Department of Nephrology, Radboud University Medical Center, Radboud Institute for Health Sciences, Nijmegen, The Netherlands; ³Department of Internal Medicine, Division of Nephrology, Maastricht University Medical Center and Cardiovascular Research Institute Maastricht (CARIM) School for Cardiovascular Disease, University of Maastricht, Maastricht, The Netherlands; ⁴Dutch Registry Registratie Nierfunctievervangend Nederland (RENINE), Nefrovisie, Utrecht, The Netherlands; ⁵Department Viroscience, Erasmus Medical Center, Rotterdam, The Netherlands; ⁶Renal Transplant Unit, Amsterdam University Medical Center, University of Amsterdam, Amsterdam, The Netherlands; ⁷Department of Medical Microbiology and Infection Prevention, University Medical Center Groningen, Groningen, The Netherlands; ⁸Department of Internal Medicine, Division of Nephrology, University of Groningen, University Medical Center Groningen, Groningen, The Netherlands; ⁹Department of Nephrology, Radboud University Medical Center, Radboud Institute for Health Sciences, Nijmegen, The Netherlands; ¹⁰Department of Nephrology, Leiden University Medical Center, Leiden, The Netherlands.

Disclaimer. The funding organization had no role in the design of the study, data interpretation, writing of the manuscript, or the decision to submit the manuscript.

Financial support. This work was supported by the Netherlands Organization for Health Research and Development (project 10430072010002).

Potential conflicts of interest. C. C. B. reports a Dutch Kidney Foundation grant and support from the Procure II study unrelated to this work and a role as Executive Editor/Social Media Editor for *Transplantation Journal*. M. M. L. K. reports participation on an advisory board on maribavir for Takeda. All other authors report no potential conflicts. All authors have submitted the ICMJE Form for Disclosure of Potential Conflicts of Interest. Conflicts that the editors consider relevant to the content of the manuscript have been disclosed.

References

- Williamson EJ, Walker AJ, Bhaskaran K, et al. Factors associated with COVID-19-related death using OpenSAFELY. *Nature* 2020; 584:430–6.
- Kho MML, Reinders MEJ, Baan CC, et al. The RECOVAC IR study: the immune response and safety of the mRNA-1273 COVID-19 vaccine in patients with

- chronic kidney disease, on dialysis, or living with a kidney transplant—a prospective, controlled, multicenter observational cohort by the RENal patients COVID-19 VACCination (RECOVAC) consortium COVID-19 VACCination (RECOVAC) consortium. *Nephrol Dial Transplant* **2021**; 36:1761–4.
3. Sanders J-SF, Bemelman FJ, Messchendorp AL, et al. The RECOVAC Immune-response Study. *Transplantation* **2022**; 106:821–34.
 4. Chen JJ, Lee TH, Tian YC, Lee CC, Fan PC, Chang CH. Immunogenicity rates after SARS-CoV-2 vaccination in people with end-stage kidney disease: a systematic review and meta-analysis. *JAMA Netw Open* **2021**; 4:1–13.
 5. Caillard S, Thauant O. COVID-19 vaccination in kidney transplant recipients. *Nat Rev Nephrol* **2021**; 17:785–7.
 6. Goel RR, Painter MM, Apostolidis SA, et al. mRNA vaccines induce durable immune memory to SARS-CoV-2 and variants of concern. *Science* **2021**; 374: abm0829.
 7. GeurtsvanKessel CH, Geers D, Schmitz KS, et al. Divergent SARS-CoV-2 omicron-reactive T and B cell responses in COVID-19 vaccine recipients. *Sci Immunol* **2022**; 7:eabo2202.
 8. Levin EG, Lustig Y, Cohen C, et al. Waning immune humoral response to BNT162b2 Covid-19 vaccine over 6 months. *N Engl J Med* **2021**; 385:e84.
 9. Den Hartog G, Schepp RM, Kuijper M, et al. SARS-CoV-2-specific antibody detection for seroepidemiology: a multiplex analysis approach accounting for accurate seroprevalence. *J Infect Dis* **2020**; 222:1452–61.
 10. den Hartog G, Vos E, van den Hoogen L, et al. Persistence of antibodies to SARS-CoV-2 in relation to symptoms in a nationwide prospective study. *Clin Infect Dis* **2021**; 73:2155–62.
 11. Geers D, Shamier MC, Bogers S, et al. SARS-CoV-2 variants of concern partially escape humoral but not T cell responses in COVID-19 convalescent donors and vaccine recipients. *Sci Immunol* **2021**; 6:1–22.
 12. van den Hoogen LL, Smits G, van Hagen CCE, et al. Seropositivity to nucleoprotein to detect mild and asymptomatic SARS-CoV-2 infections: a complementary tool to detect breakthrough infections after COVID-19 vaccination? *Vaccine* **2022**; 40:2251–7.
 13. Van Praet J, Vandecasteele S, De Roo A, De Vriese A, Reynders M. Humoral and cellular immunogenicity of the BNT162b2 mRNA Covid-19 vaccine in nursing home residents. *Clin Infect Dis* **2021**; 73:2145–7.
 14. Doria-Rose N, Suthar MS, Makowski M, et al. Antibody persistence through 6 months after the second dose of mRNA-1273 vaccine for Covid-19. *N Engl J Med* **2021**; 384:2259–61.
 15. Speer C, Schaier M, Nussbag C, et al. Longitudinal humoral responses after COVID-19 vaccination in peritoneal and hemodialysis patients over twelve weeks. *Vaccines* **2021**; 9:1130.
 16. Alejo JL, Mitchell J, Chiang TP-Y, et al. Six-month antibody kinetics and durability in SARS-CoV-2 mRNA vaccinated solid organ transplant recipients. *Transplantation* **2022**; 106:e109–10.
 17. Hall VG, Ferreira VH, Ku T, et al. Randomized trial of a third dose of mRNA-1273 vaccine in transplant recipients. *N Engl J Med* **2021**; 385:1244–6.
 18. Turner JS, O'Halloran JA, Kalaidina E, et al. SARS-CoV-2 mRNA vaccines induce persistent human germinal centre responses. *Nature* **2021**; 596:109–13.
 19. Gilbert PB, Montefiori DC, McDermott AB, et al. Immune correlates analysis of the mRNA-1273 COVID-19 vaccine efficacy clinical trial. *Science* **2022**; 375: 43–50.
 20. Khoury DS, Cromer D, Reynaldi A, et al. Neutralizing antibody levels are highly predictive of immune protection from symptomatic SARS-CoV-2 infection. *Nat Med* **2021**; 27:1205–11.
 21. Rössler A, Riepler L, Bante D, von Laer D, Kimpel J. SARS-CoV-2 Omicron variant neutralization in serum from vaccinated and convalescent persons. *N Engl J Med* **2022**; 386:698–700.
 22. Liu L, Iketani S, Guo Y, et al. Striking antibody evasion manifested by the Omicron variant of SARS-CoV-2. *Nature* **2022**; 602:676–81.
 23. Cele S, Gazy I, Jackson L, et al. Escape of SARS-CoV-2 501Y.V2 from neutralization by convalescent plasma. *Nature* **2021**; 593:142–6.
 24. Mykytyn AZ, Rissmann M, Kok A, et al. Omicron BA.1 and BA.2 are antigenically distinct SARS-CoV-2 variants. *BioRxiv* 481644 [Preprint]. February 24, 2022 [cited 2022 June 23]. Available from: <https://doi.org/10.1101/2022.02.23.481644>.
 25. Wolter N, Jassat W, Walaza S, et al. Early assessment of the clinical severity of the SARS-CoV-2 Omicron variant in South Africa: a data linkage study. *Lancet* **2022**; 399:437–46.
 26. <https://www.cdc.gov/coronavirus/2019-ncov/need-extra-precautions/people-with-medical-conditions.html>. Accessed 31 May 2022.