



# Analysis of copy number alterations in bladder cancer stem cells revealed a prognostic role of *LRP1B*

Donatella Conconi<sup>1</sup> · Andrea Jemma<sup>1</sup> · Martina Giambra<sup>1,2</sup> · Serena Redaelli<sup>1</sup> · Giorgio Alberto Croci<sup>3</sup> · Leda Dalprà<sup>1</sup> · Marialuisa Lavitrano<sup>1</sup> · Angela Bentivegna<sup>1</sup>

Received: 1 May 2022 / Accepted: 29 June 2022 / Published online: 16 July 2022  
© The Author(s) 2022

## Abstract

**Purpose** Bladder cancer is the most common malignancy of the urinary tract and one of the most prevalent cancers worldwide. It represents a spectrum of diseases, from recurrent non-invasive tumors (NMIBCs) managed chronically, to muscle infiltrating and advanced-stage disease (MIBC) that requires multimodal and invasive treatment. Multiple studies have underlined the complexity of bladder tumors genome, highlighting many specific genetic lesions and genome-wide occurrences of copy-number alterations (CNAs). In this study, we analyzed CNAs of selected genes in our cohorts of cancer stem cells (CSCs) and in The Cancer Genome Atlas (TCGA-BLCA) cohort with the aim to correlate their frequency with patients' prognosis.

**Methods** CNAs have been verified on our array-CGH data previously reported on 19 bladder cancer biopsies (10 NMIBCs and 9 MIBCs) and 16 matched isolated CSC cultures. In addition, CNAs data have been consulted on the TCGA database, to search correlations with patients' follow-up. Finally, mRNA expression levels of *LRP1B* in TCGA cohort were obtained from The Human Protein Atlas.

**Results** We firstly identified CNAs differentially represented between TCGA data and CSCs derived from NMIBCs and MIBCs, and we correlated the presence of these CNAs with patients' follow-up. *LRP1B* loss was significantly increased in CSCs and linked to short-term poor prognosis, both at genomic and transcriptomic level, confirming its pivotal role in bladder cancer tumorigenesis.

**Conclusion** Our study allowed us to identify potential "predictive" prognostic CNAs for bladder cancer, implementing knowledge for the ultimate goal of personalized medicine.

**Keywords** Bladder cancer · Copy-number alterations · Cancer stem cells (CSCs) · Predictive CNAs · Prognosis · *LRP1B*

✉ Donatella Conconi  
donatella.conconi@unimib.it

✉ Angela Bentivegna  
angela.bentivegna@unimib.it

Andrea Jemma  
a.jemma@campus.unimib.it

Martina Giambra  
m.giambra1@campus.unimib.it

Serena Redaelli  
serena.redaelli@unimib.it

Giorgio Alberto Croci  
giorgio.croci@unimi.it

Leda Dalprà  
leda.dalpra@unimib.it

Marialuisa Lavitrano  
marialuisa.lavitrano@unimib.it

<sup>1</sup> School of Medicine and Surgery, University of Milano-Bicocca, Monza 20900, Italy

<sup>2</sup> PhD Program in Neuroscience, University of Milano-Bicocca, Monza 20900, Italy

<sup>3</sup> Pathology Unit, Fondazione IRCCS Ca' Granda Ospedale Maggiore Policlinico, Milan 20122, Italy

## Introduction

Bladder cancer (urothelial cancer of the bladder) is the 10th most widespread cancer worldwide, with an estimated 549,000 new cases and 200,000 deaths reported in 2018 [1]. It can be classified according to its invasiveness as either non-muscle-invasive bladder cancer (NMIBC) or muscle-infiltrating bladder cancer (MIBC) [1].

Approximately 75% of newly diagnosed patients have papillary NMIBCs [2]. NMIBCs frequently recur (50–70%) but infrequently progress to invasion (10–15%), and 5-year survival is nearly 90%. In contrast, about 20% of tumors show muscle infiltration at diagnosis, with 5-year survival less than 50% [3]. Although multiple studies tried to differentiate NMIBC and MIBC also at the molecular level, a few advances in clinical management have been made over the past decades [4].

Array-based comparative genomic hybridization technologies have been necessary in highlighting genome-wide occurrences of copy-number alterations (CNAs). Over 20% of non-invasive bladder tumors have been indicated to have CNAs compared to 30% of infiltrating bladder tumors [5]. Therefore, revealing specific chromosomal regions related to patients' survival or to the potential tumor progression

may allow the introduction of molecular CNAs profiling as part of clinical strategy for progression risk evaluation, thus implementing the personalized therapeutic approach [5]. In this context, the study of cancer stem cells as the main responsible for tumor initiation and recurrences could be crucial.

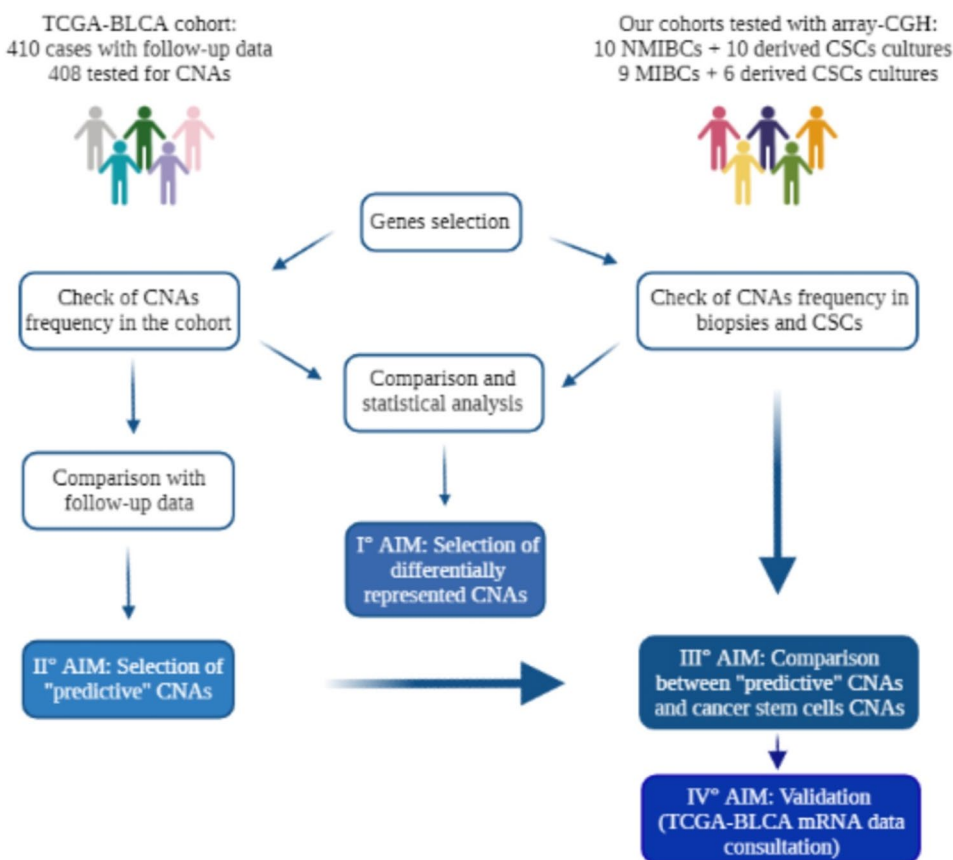
In this study, we analyzed the CNAs occurrences of selected genes in our cohorts of tumor samples, in derived cancer stem cells and in The Cancer Genome Atlas (TCGA-BLCA) cohort, with the aim to correlate their frequency with patients' prognosis, to identify potential "predictive" prognostic CNAs for bladder cancer (Fig. 1).

## Materials and methods

### Tumor samples, CSCs and array comparative genomic hybridization data

Bladder cancer specimens were collected from 19 patients that underwent transurethral resection, as previously reported [6, 7]. Staging and grading were done according to the AJCC 8th edition by a pathologist (see Table S1a for all details).

**Fig. 1** Created with BioRender.com (accessed on 22 March 2022)



Cancer stem cells (CSCs) were previously isolated and characterized [7, 8]. Array Comparative Genomic Hybridization (Array-CGH) experiments were described in [6, 7]. More details are in Supplemental Information.

### TCGA GDC data portal analysis

CNAs' data from human bladder cancer samples were obtained from the TCGA database (<https://portal.gdc.cancer.gov/> (last access date: 22 December 2021)). In particular, we selected the TCGA-BLCA project, composed of 410 samples (see Table S1b for histological characteristics). Patients' vital status and history of prior cancer diagnosis were reported. Data related to progression-free survival were not available. CNAs data were available for 408 cases out of 410. Frequency of CNAs was calculated as the number of samples with CNAs for a gene/number of total tested samples ( $n=408$ ). Alive and dead patients' number was obtained by the Vital Status field. Time-point survival was achieved by setting different "Days to the Dead" field.

### The human protein atlas

mRNA expression levels of *LRP1B* in TCGA cohort were obtained from The Human Protein Atlas (<https://www.proteinatlas.org/ENSG00000168702-LRP1B/pathology/urothelial+cancer>, last access date: 9 March 2022). RNA-seq data are reported as average FPKM (fragments per kilobase of exon per million mapped reads). Based on the FPKM values, patients were classified into two groups "low" (under cut off) or "high" (over cut off) expression. Selected cut-off value was "best expression cut-off" (0.01) indicated for *LRP1B*.

## Results

### First aim: identification of CNAs differentially represented between TCGA GDC data and CSCs

We first identified 34 genes involved in copy-number aberrations in bladder cancer. The selection was based on literature (see Supplemental Information) and our previous studies [6, 7]. Copy number of these genes was checked on our array-CGH data of 19 bladder cancer biopsies (10 NMIBCs and 9 MIBCs) and 16 matched isolated cancer stem cells cultures (Table S2, [7]). The frequency of CNAs in these genes is reported in Table S3.

Then, we compared CNAs frequencies with those reported in TCGA GDC Data Portal referred to TCGA-BLCA project (number of cases where CN gain or loss was observed/408 cases tested for CNAs in every gene, <https://portal.gdc.cancer.gov/>). Since the BLCA project is mainly composed of MIBCs (98,7% of samples) and NMIBC data

are almost absent, we compared both cancer histotypes with the MIBCs' dataset. Statistical analysis between database data and our results revealed significant differences in frequency of some CNAs (Table S3, Chi-square or Fisher's exact test). Due to CSCs pivotal role in cancer progression and recurrence, we focused our attention on CNAs differentially represented between GDC data and our isolated CSCs, identifying genes with a CN gain or loss preferentially in this subpopulation (*ATE1*, *FGF3*, *KRAS*, *ZNF706* and *CDKAL1*, *LRP1B*, *PTCH2*, *RAF1*, *TMPRSS2*, *TSC1*, *TSHZ3* respectively, Fig. 2A, B).

### Second aim: correlation of CNAs with patients' follow-up

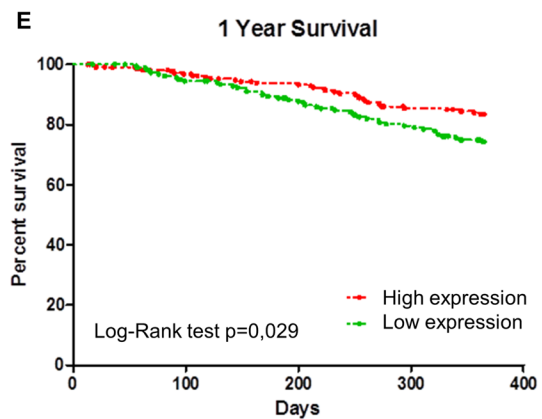
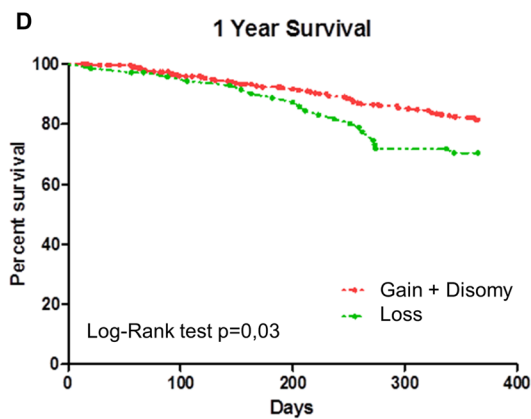
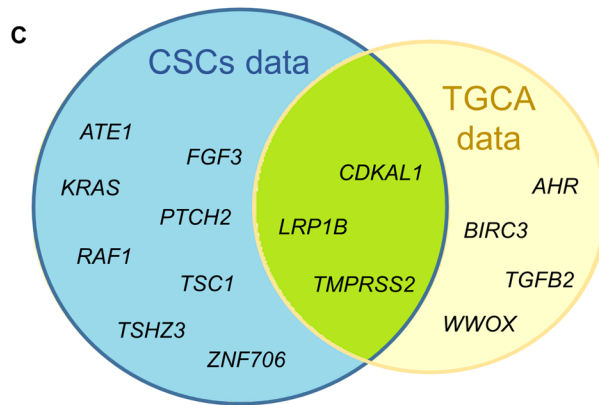
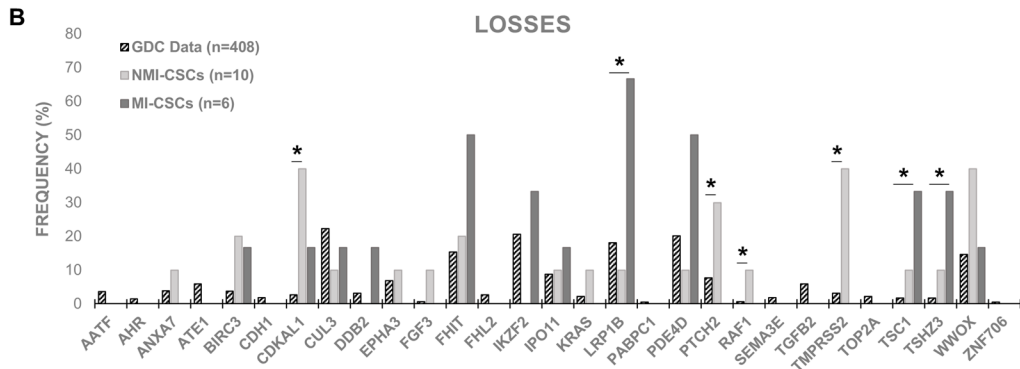
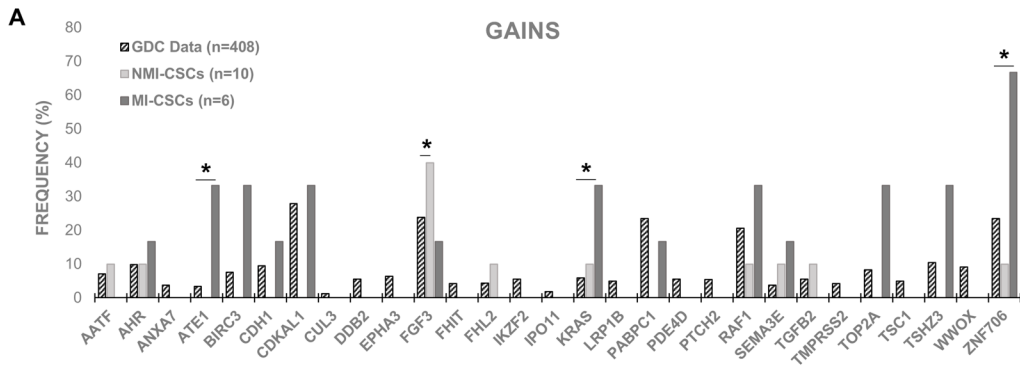
To overcome the absence of follow-up data from our patients and to increase the number of cases, we consulted The Cancer Genome Atlas (BLCA project). We extracted survival data from the TCGA-BLCA population (410 samples) after setting three time-points for survival (6 months, 1 year and 5 year). We reported the survival data of patients carrying copy-number gain/loss in genes reported in Table S4. We expressed this information as the ratio of the number of alive and/or dead patients to the number of cases carrying copy-number gain and/or loss in that gene. Then, we compared the survival data of patients carrying a specific CNA with those of the total cohort (Table S4).

Statistical analysis (Chi-square or Fisher's exact test) revealed significant differences in survival in several CNAs carriers, suggesting a possible role of these genes in patients' prognosis. In particular, the percentage of dead patients in *WWOX* loss carriers was significantly higher than the percentage of dead patients in the total cohort at 6 months (Chi-square test,  $p < 0.05$ ). Similarly, the loss of *LRP1B* seemed to correlate with a worse 1-year survival (Chi-square test,  $p < 0.05$ ). Conversely, gain of *BIRC3* and *CDKAL1* genes and loss of *AHR* were associated with a better 5-year survival (Chi-square or Fisher's exact test,  $p < 0.05$ ).

The same approach was used to check the presence of CNAs associated with tumor relapse. Unfortunately, progression-free survival data are not available in the database, so we analyzed the presence of prior malignancy in the complete cohort versus CNAs' carrier groups. Even in this case, we identified CNAs in genes potentially related to tumor recurrence, such as *TGFB2* and *TMPRSS2*.

### Third aim: comparison of "predictive" CNAs and CSCs data

Comparison of "predictive" CNAs and CSCs data revealed that *LRP1B* loss was also significantly more represented in CSCs, confirming its prominent role in bladder cancer (Fig. 2B, C). Moreover, *CDKAL1* loss was significantly



**Fig. 2** **A, B** CNAs frequency in TCGA GDC Data Portal and CSCs cultures. *NMI* non-muscle-invasive, *MI* muscle-infiltrating, *CSCs* cancer stem cells. \* $p < 0.05$  Chi-square or Fisher's exact test. **C** Schematic representation of CNAs data in the two cohorts. **D** Kaplan–Meier plots showing 1-year survival of patients with loss or disomy/gain of *LRP1B*. **E** Kaplan–Meier plots showing 1-year survival of patients with low or high *LRP1B* RNA expression

increased in NMIBCs-derived CSCs, indirectly supporting TGCA data previously shown (Fig. 2B, C). *TMPRSS2* loss was also significantly increased in NMI-CSCs; however, TGCA data showed an association of both CN gain and loss with tumor recurrence (Table S4).

#### Fourth aim: RNA expression data consultation

Finally, mRNA expression levels of *LRP1B* in TGCA cohort were obtained from The Human Protein Atlas. Based on the expression level (fragments per kilobase of exon per million mapped reads—FPKM), patients were classified into two groups "low" or "high" expression (see Materials and methods). Analysis of correlation between mRNA expression levels and 1-year survival confirmed the prognostic role of *LRP1B* not only at the genomic but also at the transcriptional level (Fig. 2D, E). Tumor stage classification did not highlight a subgroup with a better correlation between *LRP1B* expression and patient prognosis (data not shown).

## Discussion

Despite several improvements in bladder cancer knowledge, it is still the tenth most common cause of cancer death and about 25% of these tumors are muscle infiltrating or metastatic at diagnosis, mostly with a poor prognosis [9].

The large progress in technology development has allowed a deeper understanding of the molecular mechanisms regulating bladder cancer development and progression. Furthermore, recursive use of genomics and transcriptomics in clinical settings determines the prospect of precision medicine, which requires the identification of accurate elements for assessing patients' response to therapy, prognosis and the recurrence frequency [10]. According to this, in the current work, we aimed to identify genes involved in copy-number alterations potentially related to patients' prognosis.

First, analysis of CNAs frequencies in the TGCA cohort and our samples (primary tumors and isolated CSCs) allowed the identification of genes affected by differentially represented CNAs. In particular, *ATE1*, *FGF3*, *KRAS*, *ZNF706* showed a higher percentage of CN gain in the CSCs than in TGCA data.

Among these, the *ZNF706* gene, located at 8q22.3, is a zinc finger gene family member, involved in the

transcriptional regulation of gene expression [11]. It was found to be up-regulated in laryngeal squamous cancer tissues and gastric cancers with amplification at 8q22.3 [11]. It also appeared up-regulated in breast tumors and it was indicated as a candidate biomarker of breast cancer progression [12]. Accordingly, we identified a strong increase of CN gain percentage in CSCs derived from MIBCs. Similarly, gain of *KRAS* was significantly enhanced in MIBCs-derived CSCs. We also found an increased percentage of CN gain of *FGF3* in NMIBCs-derived CSCs. *FGF3* has been repeatedly found amplified in bladder cancer and its up-regulated expression has been associated with tumor's malignant clinical phenotypes [13].

Concerning genes involved in CN losses preferentially found in CSCs, some are exclusive of NMIBCs, such as *CDKAL1*, *PTCH2*, *RAF1*, *TMPRSS2*, others of MIBCs (*LRP1B*, *TSC1*, *TSHZ3*). Some of these losses were identified as "predictive" by correlating their presence with patients' follow-up using the TCGA GDC Data Portal.

Data evaluation uncovered some CNAs associated with tumor recurrence, in particular, gain of *TGFB2* and gain or loss of *TMPRSS2* (Table S4). Supporting this observation, *TGFB2*–Smad3 pathway has been demonstrated to promote proliferation and epithelial–mesenchymal transition in several cancers, recently also in bladder cancer [14, 15]. *TMPRSS2*, rather, has been reported for its contribution to severe acute respiratory syndrome coronavirus 2 (SARS-CoV-2) infection, but recently its role in different types of cancers was investigated [15]. The expression of *TMPRSS2* was found significantly decreased in many tumors, and correlated with poor prognosis [16]. Our findings demonstrated a significant increase of CN loss percentage in NMI-CSCs; however, an association of both gain and loss with tumor recurrence was discovered in TGCA data.

Data examination also allowed the identification of CNAs associated with patients' survival. CN gain of *BIRC3* and *CDKAL1* genes and loss of *AHR* were associated with better 5-year survival. Amplifications of aryl hydrocarbon receptor (*AHR*) have been recently identified in bladder cancer [17], and its activation was also associated with grade, stage, and progression [18], confirming the protective role of its loss (100% of patients) observed in TGCA. We did not find a different frequency in CSCs. Similarly, no relevant differences in percentage of gain or loss were identified in CSCs for *BIRC3* gene.

*CDKAL1* gene maps at 6p22 where a highly prevalent amplification in bladder cancer compared to other cancer types has been registered [19]. However, knockdown of *CDKAL1* did not affect cell proliferation [18], suggesting that it could exert its oncogenic properties in other ways, maybe by a co-amplification of the neighbor *E2F3* [20]. Interestingly, TGCA analysis uncovered a correlation between *CDKAL1* gain and better survival, and a significant

increment of CN loss was observed in NMIBCs-derived CSCs, indirectly supporting TGCA results.

The second time-point analysis evidenced a correlation between CN loss of low-density lipoprotein receptor-related protein 1B (*LRP1B*) and a worst 1-year survival. *LRP1B*, member of the LDL receptor family, is a large gene located on chromosome 2q, containing more than 91 exons and spanning over 500 kb. The related protein is 4599 amino acids long [21] and it is involved in a large functional spectrum, ranging from receptor-mediated endocytosis, lipoprotein trafficking, transportation of nutrients and vitamins, developmental processes to cellular signaling [22]. *LRP1B* is one of the most altered genes in human cancer overall [22] and its role has been closely related to cancer progression. *LRP1B* gene was identified as commonly inactivated in non-small-cell lung cancer cell lines and its inactivation by several genetic and epigenetic mechanisms has been frequently reported in multiple tumor types [22], corroborating its proposed tumor suppressor function. Recently, *LRP1B* association with tumor mutational burden and immunotherapy efficacy has been confirmed in lung and hepatocellular carcinomas, revealing the gene mutational status as a potential biomarker for immune check-point inhibitors (ICI) treatment response, through mast cells activation and infiltration in tumor tissues [23, 24].

*LRP1B* role as a candidate tumor suppressor also for bladder cancer has been proposed several years ago [25]; however, its function still remains to be fully elucidated. A lower frequency of its copy-number deletions was newly associated with a specific subtype of bladder cancer (quiescent type) that exhibited the best overall survival [26]. Our TCGA analysis confirmed its crucial role, for the first time linked to short-term prognosis (1-year survival). An additional confirmation was given by the presence of a CN loss in 66.7% of MI-derived CSCs, significantly increased respect to TGCA data and biopsies. *LRP1B* prognostic role, in terms of expression level, through RNA-seq data analysis was also confirmed.

Finally, 6-month survival data examination revealed *WWOX* loss as a negative prognostic factor. *WWOX* is known as a global modulator of gene expression and cell metabolism [27]. It is one of the largest human genes and contains the second most common chromosomal fragile site FRA16D, a hot spot of genomic instability. This makes *WWOX* prone to breakage and frequent target for CNAs in cancer [28]. In fact, decrease or loss of its expression was found in several tumor tissues, and it is often correlated with higher tumor grade and unfavorable outcome [29]. Studies on bladder cancers revealed a critical role of *WWOX* in the tumorigenesis and loss of its protein expression correlates with higher tumor grade, more advanced stage, and shorter progression-free survival or overall survival [27–30]. According to these data, we found a high percentage of

*WWOX* CN loss in MI-biopsies, not maintained in CSCs subpopulation.

## Conclusions

In conclusion, we first identified CNAs differentially represented between GDC data and CSCs derived from NMIBCs and MIBCs, and we correlated the presence of these CNAs with patients' follow-up. *LRP1B* loss was significantly increased in CSCs and for the first time linked to short-term prognosis (1-year survival), both at genomic and transcriptomic level, confirming its pivotal role in bladder cancer tumorigenesis. Moreover, its recently identified role in the ICI response could have relevant clinical implications for the patients' treatment in the future. However, the limitations of this study, such as the absence of follow-up data from our patients' cohort and the limited number of CSC samples, indicate the need for further studies.

**Supplementary Information** The online version contains supplementary material available at <https://doi.org/10.1007/s00345-022-04093-1>.

**Author contributions** Conceptualization, DC and AB; methodology, DC; formal analysis, DC; AJ, MG, and GAC; investigation, DC and SR; resources, ML and AB; data curation, DC and SR; writing—original draft preparation, DC and AJ; writing—review and editing, DC, AJ, MG, SR, GAC, LD, ML, and AB; visualization, DC, AJ, MG, and AB; supervision, DC and AB; project administration, DC and AB; funding acquisition, LD, ML, and AB All authors have read and agreed to the published version of the manuscript.

**Funding** Open access funding provided by Università degli Studi di Milano - Bicocca within the CRUI-CARE Agreement.

## Declarations

**Conflict of interest** All authors declare to have no potential conflict of interest.

**Ethics approval** This study was approved and funded by Direzione Generale Sanità Regione Lombardia and presented by General Director and ethic commitment of ICP Hospital Bassini (Cinisello Balsamo, Italy).

**Informed consent** Informed consent was obtained from all individual participants included in the study.

**Open Access** This article is licensed under a Creative Commons Attribution 4.0 International License, which permits use, sharing, adaptation, distribution and reproduction in any medium or format, as long as you give appropriate credit to the original author(s) and the source, provide a link to the Creative Commons licence, and indicate if changes were made. The images or other third party material in this article are included in the article's Creative Commons licence, unless indicated otherwise in a credit line to the material. If material is not included in the article's Creative Commons licence and your intended use is not permitted by statutory regulation or exceeds the permitted use, you will

need to obtain permission directly from the copyright holder. To view a copy of this licence, visit <http://creativecommons.org/licenses/by/4.0/>.

## References

- Bray F, Ferlay J, Soerjomataram I et al (2018) Global cancer statistics 2018: GLOBOCAN estimates of incidence and mortality worldwide for 36 cancers in 185 countries. *CA Cancer J Clin* 68:394–424. <https://doi.org/10.3322/caac.21492>
- Sanli O, Dobruch J, Knowles MA et al (2017) Bladder cancer. *Nat Rev Dis Prim* 3:1–19. <https://doi.org/10.1038/nrdp.2017.22>
- Knowles MA, Hurst CD (2015) Molecular biology of bladder cancer: new insights into pathogenesis and clinical diversity. *Nat Rev Cancer* 15:25–41. <https://doi.org/10.1038/nrc3817>
- Tran L, Xiao JF, Agarwal N et al (2021) Advances in bladder cancer biology and therapy. *Nat Rev Cancer* 21:104–121. <https://doi.org/10.1038/s41568-020-00313-1>
- Spasova V, Mladenov B, Rangelov S et al (2021) Clinical impact of copy number variation changes in bladder cancer samples. *Exp Ther Med* 22:1–15. <https://doi.org/10.3892/etm.2021.10333>
- Conconi D, Sala E, Bovo G et al (2016) Using copy number alterations to identify new therapeutic targets for bladder carcinoma. *Int J Mol Sci*. <https://doi.org/10.3390/ijms17030271>
- Conconi D, Panzeri E, Redaelli S et al (2014) Chromosomal imbalances in human bladder urothelial carcinoma: similarities and differences between biopsy samples and cancer stem-like cells. *BMC Cancer* 14:1–10. <https://doi.org/10.1186/1471-2407-14-646>
- Bentivegna A, Conconi D, Panzeri E et al (2010) Biological heterogeneity of putative bladder cancer stem-like cell populations from human bladder transitional cell carcinoma samples. *Cancer Sci* 101:416–424. <https://doi.org/10.1111/j.1349-7006.2009.01414.x>
- Larré S, Catto JWF, Cookson MS et al (2013) Screening for bladder cancer: rationale, limitations, whom to target, and perspectives. *Eur Urol* 63:1049–1058. <https://doi.org/10.1016/j.eururo.2012.12.062>
- Vlachostergios PJ, Faltas BM (2019) The molecular limitations of biomarker research in bladder cancer. *World J Urol* 37:837–848. <https://doi.org/10.1007/s00345-018-2462-9>
- Colombo J, Provazzi PJS, Calmon MF et al (2013) Expression, purification and molecular analysis of the human ZNF706 protein. *Biol Proced Online* 15:1–8. <https://doi.org/10.1186/1480-9222-15-10>
- Świtnicki MP, Juul M, Madsen T et al (2016) PINCAGE: probabilistic integration of cancer genomics data for perturbed gene identification and sample classification. *Bioinformatics* 32:1353–1365. <https://doi.org/10.1093/bioinformatics/btv758>
- Yong-hai Zhang, Dan Xie, Jun-hang Luo, Wei Chen, Ling-wu Chen QX The clinical significance of expression and amplification of FGF3 in bladder transitional cell carcinoma
- Zhang Z, Chen F, Zhan H et al (2021) lncRNA CASC9 sponges miR-758-3p to promote proliferation and EMT in bladder cancer by upregulating TGF- $\beta$ 2. *Oncol Rep* 45:265–277. <https://doi.org/10.3892/or.2020.7852>
- Su Y, Feng W, Shi J et al (2020) CircRIP2 accelerates bladder cancer progression via miR-1305/Tgf- $\beta$ 2/smad3 pathway. *Mol Cancer* 19:1–13. <https://doi.org/10.1186/s12943-019-1129-5>
- Liu L, Qin JF, Zuo MZ, Zhou Q (2021) Multi-omics of the expression and clinical outcomes of TMPRSS2 in human various cancers: a potential therapeutic target for COVID-19. *J Cell Mol Med*. <https://doi.org/10.1111/jcmm.17090>
- Bellmunt J, Kim J, Reardon B et al (2021) Genomic predictors of good outcome, recurrence, or progression in high-grade T1 non-muscle-invasive bladder cancer. *Cancer Res* 80:4476–4486. <https://doi.org/10.1158/0008-5472.CAN-20-0977>
- Matheus LHG, Dalmazzo SV, Brito RBO et al (2020) 1-Methyl-D-tryptophan activates aryl hydrocarbon receptor, a pathway associated with bladder cancer progression. *BMC Cancer* 20:1–7. <https://doi.org/10.1186/s12885-020-07371-6>
- Shen H, Morrison CD, Zhang J et al (2013) 6P22.3 amplification as a biomarker and potential therapeutic target of advanced stage bladder cancer. *Oncotarget* 4:2124–2134. <https://doi.org/10.18632/oncotarget.1485>
- Hurst CD, Platt FM, Taylor CF, Knowles MA (2012) Novel tumor subgroups of urothelial carcinoma of the bladder defined by integrated genomic analysis. *Clin Cancer Res* 18:5865–5877. <https://doi.org/10.1158/1078-0432.CCR-12-1807>
- Brown LC, Tucker MD, Sedhom R et al (2021) LRP1B mutations are associated with favorable outcomes to immune checkpoint inhibitors across multiple cancer types. *J Immunother Cancer* 9:1–10. <https://doi.org/10.1136/jitc-2020-001792>
- Príncipe C, de Sousa IJD, Prazeres H et al (2021) Lrp1b: a giant lost in cancer translation. *Pharmaceuticals* 14:1–19. <https://doi.org/10.3390/ph14090836>
- Zhu M, Zhang L, Cui H et al (2022) Co-Mutation of FAT3 and LRP1B in lung adenocarcinoma defines a unique subset correlated with the efficacy of immunotherapy. *Front Immunol* 12:1–12. <https://doi.org/10.3389/fimmu.2021.800951>
- Cheng Y, Tang R, Li X et al (2022) LRP1B is a potential biomarker for tumor immunogenicity and prognosis of HCC patients receiving ICI treatment. *J Hepatocell Carcinoma* 9:203–220. <https://doi.org/10.2147/jhc.s348785>
- Langbein S, Szakacs O, Wilhelm M et al (2002) Alteration of the LRP1B gene region is associated with high grade of urothelial cancer. *Lab Invest* 82:639–643. <https://doi.org/10.1038/labinvest.3780458>
- Zhang Y, Zhu B, Cai Y et al (2022) Alteration in glycolytic/cholesterogenic gene expression is associated with bladder cancer prognosis and immune cell infiltration. *BMC Cancer* 22:1–15. <https://doi.org/10.1186/s12885-021-09064-0>
- Kałużnińska Ż, Kołat D, Kośła K et al (2021) In vitro and in silico assessment of the effect of WWOX expression on invasiveness pathways associated with AP-2 transcription factors in bladder cancer. *BMC Urol* 21:1–14. <https://doi.org/10.1186/s12894-021-00806-7>
- Hussain T, Liu B, Shrock MS et al (2019) WWOX, the FRA16D gene: a target of and a contributor to genomic instability. *Genes Chromosom Cancer* 58:324–338. <https://doi.org/10.1002/gcc.22693>
- Li G, Sun L, Mu Z et al (2015) Ectopic WWOX expression inhibits growth of 5637 bladder cancer cell in vitro and in vivo. *Cell Biochem Biophys* 73:417–425. <https://doi.org/10.1007/s12013-015-0654-0>
- Ramos D, Abba M, López-Guerrero JA et al (2008) Low levels of WWOX protein immunorexpression correlate with tumour grade and a less favourable outcome in patients with urinary bladder tumours. *Histopathology* 52:831–839. <https://doi.org/10.1111/j.1365-2559.2008.03033.x>

**Publisher's Note** Springer Nature remains neutral with regard to jurisdictional claims in published maps and institutional affiliations.