

A new PCR based molecular method for early and precise quantification of parasitization in the emerging olive pest *Dasineura oleae*

Serena Magagnoli,^{a†*}  Elena Tondini,^{b†} Claudio Ratti,^a Giovanni Burgio^a and Ruggero Petacchi^b



Abstract

BACKGROUND: *Dasineura oleae* (Angelini 1831) (Diptera: Cecidomyiidae) was considered a minor pest in olive orchards, but in recent years severe outbreaks have been registered in several Mediterranean countries. Damage is caused by the feeding activity of larvae that induce gall formations and alters the physiological activity of the leaves. In Italy, this pest may be controlled by four Hymenoptera parasitoid species belonging to *Platygaster* and *Mesopolobus* genera such as *Platygaster demades* Walker 1835, *Platygaster oleae* Szelenyi 1940 (Hymenoptera: Platygastridae), *Mesopolobus aspilus* (Walker 1835) and *Mesopolobus mediterraneus* (Mayr 1903) (Hymenoptera: Pteromalidae), but parasitization becomes evident only after gall dissection.

RESULTS: In this study, we aim to: (i) design a primer for the detection of specimens belonging to *Platygaster* and *Mesopolobus* genera; (ii) develop a multiplex quantitative polymerase chain reaction (qPCR) protocol combined to a fast samples DNA extraction method; (iii) apply the developed protocol to field-collected specimens and compare this method with traditional techniques based on visual estimation of parasitism rate on larvae. Primers were designed to anneal with cytochrome oxidase subunit I (COI) sequences of *Platygaster* and *Mesopolobus* genera while protocols were developed to be fast and capable to process several samples at the same time. Molecular analyses demonstrated to provide almost double of the parasitism rate assessed by visual inspection. Furthermore, on second instar larvae the PCR-based method was able to detect ten-fold times the parasitization rate estimated by visual inspection.

CONCLUSION: The application on a greater scale of this newly developed method could be fundamental in the determination of the biological control potential in olive orchards.

© 2022 The Authors. *Pest Management Science* published by John Wiley & Sons Ltd on behalf of Society of Chemical Industry.

Supporting information may be found in the online version of this article.

Keywords: *Dasineura oleae*; *Platygaster* spp.; *Mesopolobus* spp.; koinobionts parasitoids; biological control; multiplex qPCR

1 INTRODUCTION

Several Cecidomyiidae species are pests of economic importance^{1–5} and some of them are characterized by irregular outbreaks, leading to seasonal crop losses. *Dasineura oleae* (Angelini 1831) (Diptera: Cecidomyiidae) is a monophagous cecidomyiid pest that attacks the olive tree, *Olea europaea* L. This species has been generally considered as a minor pest in Mediterranean olive orchards, but several outbreaks were recently recorded all over its native range.^{6–9} The damage is caused by the larva that mines into the leaf and causes the formation of a gall, where it spends its life cycle until adult emergence in the spring of the following year.⁹ *Dasineura oleae* galls interfere with some physiological processes of olive leaves and a massive infestation can lead to a precocious leaf falling.⁷

The parasitoid complex of *D. oleae* comprises of 17 species of parasitoids,^{7,10} mostly detected in Turkey. Up to now, in Italy, only a complex of species including *Platygaster demades* Walker 1835,

Platygaster oleae Szelenyi 1940 (Hymenoptera: Platygastridae), *Mesopolobus mediterraneus* (Mayr 1903) and *Mesopolobus aspilus* (Walker 1835) (Hymenoptera: Pteromalidae) were recorded as parasitoids of *D. oleae*.⁹ Traditional methods for parasitism assessment and parasitoid species discrimination include laboratory rearing of field-collected material and host dissection followed by microscopic analyses of the parasitoids immature stages.¹¹

* Correspondence to: S Magagnoli, Alma Mater Studiorum – Università di Bologna, Dipartimento di Scienze e Tecnologie Agro-Alimentari (DISTAL), Viale G. Fanin 42, 40127 Bologna, Italy. E-mail: serena.magagnoli4@unibo.it

† These authors contributed equally to the work.

a Dipartimento di Scienze e Tecnologie Agro-Alimentari (DISTAL), Alma Mater Studiorum – Università di Bologna (UNIBO), Bologna, Italy

b Istituto di Scienze della Vita, Scuola Superiore Sant'Anna, Pontedera, Italy

These methods are considered time-consuming and include several problems. For example, laboratory rearing conditions^{10,12,13} may greatly and unevenly affect the survival of both the host and the parasitoids,^{14,15} leading to biased estimation of parasitization. Furthermore, parasitoid rearing is performed when both *D. oleae* and the parasitoids are about to emerge, and the time lag between field collection and adult emergence does not allow a rational application of integrated pest management (IPM) strategies and conservation program of parasitoid communities. Host dissection may allow a more precise estimation of the parasitism rate, but the taxonomic identification of the immature parasitoids is almost impossible. Many parasitoids are koinobionts¹⁶ as in the case of *D. oleae* parasitoids detected in Italy.⁹ They lay their eggs directly inside the host and parasitism becomes evident when *D. oleae* turns into the third instar larvae. Therefore, gall dissection and visual inspection of the larvae may provide an estimation of the parasitism rate when timely performed, however, these techniques do not discriminate between parasitoid species. Moreover, underestimation of parasitism rate may be common since the development rate of parasitoids and their host may differ from individual to individual, showing variable trends in the different infested areas and climatic conditions. With the use of sensitive molecular techniques, a precise estimation of parasitism rate could be achieved earlier than dissection or rearing methods, leading to a more efficient method of biological control evaluation. Parasitism assessment and the estimation of the relative abundance of the different parasitoids involved in *D. oleae* control are necessary to implement conservation biological control (CBC) strategies and to integrate this knowledge into IPM systems. In fact, assessing parasitoids' presence and abundance can help to calibrate pest control strategies and the application of molecular techniques in this context can provide opportunities to improve CBC.^{17,18} Molecular techniques are a useful tool to precisely evaluate the relative abundance of each parasitoid species,^{15,19–24} overcoming taxonomic identification and time-consuming rearing or dissection. To date, despite the potential to use a DNA-based approach, molecular tools for the identification of *D. oleae* parasitoids have not been developed previously.

Here we aim to: (i) design a primer to detect specimens belonging to *Platygaster* and *Mesopolobus* genera, the most common parasitoids of *D. oleae* reported in central Italy²⁵; (ii) develop a protocol for multiplex quantitative polymerase chain reaction (qPCR) and fast samples DNA extraction; (iii) apply these newly developed protocols to field-collected specimens and compare this method with traditional techniques such as laboratory rearing and visual estimation of parasitism rate on larvae exposed by gall dissection. Here we performed a traditional visual estimation of the parasitism rate and applied the molecular technique on the same specimens, allowing a precise comparison between these two techniques in order to optimize the quantification of biological control of this trophic system.

2 MATERIAL AND METHODS

2.1 Field samplings

Preliminary analyses of olive branches collected in olive orchards with high infestation of *D. oleae* was conducted early in spring, during 2018, to obtain parasitoids reference collection. Each branch was rolled with moisturized cotton wool and placed into a plastic jar, closed with fine gauze. Containers were checked daily for *D. oleae* and parasitoids emergence. Each emerged specimen was freeze-killed, morphologically identified by an expert

taxonomist, and individually stored in 1.5 mL Eppendorf tubes with absolute ethanol at -20°C . Thirty-two adult specimens of *P. demades*, 28 specimens of *Mesopolobus* spp. and 38 specimens of *D. oleae* adults were obtained, while no specimens of *P. oleae* were found.

Data collected showed that parasitism can be visually evidenced only when *D. oleae* reaches the stage of third instar larvae. Indeed, we sampled *D. oleae* galls in late February 2019, when it has been expected that most of the population developed into third instar larvae. This allowed both the early assessment of the parasitization level through molecular tools and the comparison of these results with the parasitization level assessed through the visual inspection of the larvae. Five organically managed olive orchards (cv. Frantoio, Leccino, Morcaio, Moraiolo) were selected in the Gavorrano district (Grosseto, Tuscany, Italy). Six olive trees were chosen and marked with a tag, along a transect from the core of the field to one edge confined with semi-natural vegetation. Each sample consisted in two apical branches of five nodes that were stored in sealed plastic bags until examination. Up to 40 galls randomly selected on each sample were dissected under a stereoscope to expose the larvae. Gall dissection and larvae manipulation were performed under sterile conditions. Each larva was carefully examined to detect the presence of parasitization or other abnormalities, labeled and stored at -20°C in absolute ethanol for parasitoids molecular detection. As parasitism is evident when third instar larvae develop, intact larvae are actively moving, are bright yellow and metamerism is clearly visible. However, third instar parasitized larvae contain one or more nearly developed parasitoids that may be evident throughout the larvae cuticle. The parasitoid puparia have the same dimensions of intact third instar larvae but look swollen and opaque. We assessed the parasitization rate and the relative abundance of each parasitoid genera by carrying out two additional samples later in the season (March) when both host and parasitoids are in the later development stages and are near to emerge. Two branches were randomly selected from the same trees sampled in February. For each sample, we randomly selected up to 40 galls and placed them in plastic jars in laboratory conditions. Each container was closed with fine gauze to increase air circulation and reduce mold growth. The branches were rolled in wet cotton wool in order to keep leaves turgid. After 10 days the number of emerged *D. oleae*, *P. demades*, *P. oleae* and *Mesopolobus* spp. were counted.

2.2 Molecular analysis

2.2.1 DNA extraction

Fast DNA extraction from single specimen was performed in 1.5 mL Eppendorf tube adding 100 μL of extraction buffer [phosphate-buffered saline (PBS) pH 7.2 supplemented with 2% polyvinylpyrrolidone (PVP-10), 0.2% diethyldithiocarbamate (DIECA)] and ten beads of 2.0 mm \varnothing ZR BashingBead™ (Zymo Research, Irvine, CA, USA) to each sample. Samples were then homogenized with a Tissue Lyser II (Qiagen, Hilden, Germany), processed for 3 min at 30 Hz and used for qPCR amplification. The step-by-step procedure for fast DNA extraction is detailed in Table 1.

2.2.2 Primer design

Sixteen adult specimens for *Platygaster* and seven for *Mesopolobus* parasitoid genera were extracted and amplified using the universal primer pair LCO-1490/HCO-2198²⁶ targeting the 5' portion of the cytochrome oxidase subunit I (COI). The PCR reaction mix was prepared in a final volume of 25 μL with 3 μL of fast extracted DNA, 5 μL of 5 \times colorless GoTaq® reaction buffers (Promega,

Table 1. Step-by-step procedure for fast DNA extraction

1. Preparing samples
 - Remove absolute ethanol from the 1.5 mL Eppendorf tube (time ~10 s per sample);
 - Put the sample under vacuum in order to evaporate any remaining of liquid (time ~10 min per 30 samples).
2. Preparing extraction tubes
 - Add ten beads of 2.0 mm ϕ ZR BashingBead™ to each sample (time ~5 s per sample);
 - Add 100 μ L of extraction buffer to each sample (time ~5 s per sample).
3. Mechanically homogenizing samples and amplification
 - Homogenize sample with a Tissue Lyser II for 3 min at 30 Hz (time 3 min per 48 samples);
 - Use crude DNA extraction for quantitative polymerase chain reaction (qPCR) amplification;
 - Store crude DNA extraction at -20°C for further use.

Madison, WI, USA), 2.5 μ L of magnesium chloride (MgCl_2 , 25 mmol L^{-1}), 0.5 μ L of mix dNTPs (10 mmol L^{-1}), 1 μ L of LCO-1490 primer (10 μ mol L^{-1}), 1 μ L of HCO-2198 primer (10 μ mol L^{-1}), 0.2 μ L of Go Taq DNA polymerase (5 U μL^{-1}) and 11.8 μ L of nuclease-free water. The PCR program was characterized by denaturation for 3 min at 94°C , followed by 30 cycles of amplification: 30 s at 94°C , 40 s at 60°C , and 1 min at 72°C . A post-PCR final elongation for 10 min at 72°C closed the amplification process. Amplicons were separated by electrophoresis in 1% agarose gel and analyzed under ultraviolet (UV) light after staining with ethidium bromide.

PCR-products were purified using Wizard® SV Gel and PCR Clean-Up System Kit (Promega) and cloned using the pGEM®-T Vector System (Promega) according to the manufacturer's protocol. For the ligation reaction 5 μ L Rapid Ligation Buffer (2 \times), 1 μ L pGEM® -T vector, 1 μ L T4 DNA ligase and 3 μ L of DNA were incubated overnight at 4°C . *Escherichia coli* cells (strain MC1022) were transformed by electroporation (Eppendorf® Electroporator 2510 at 2500 V), plated on LB-plates containing ampicillin (100 $\mu\text{g mL}^{-1}$), X-Gal (80 $\mu\text{g mL}^{-1}$) and isopropyl β -D-1-thiogalactopyranoside (IPTG, 0.5 mmol L^{-1}) then incubated overnight at 37°C . Recombinant plasmids were isolated using the Wizard® Plus SV Minipreps DNA Purification System

(Promega) following the manufacturer's instructions and sequenced by Eurofins Genomics (Ebersberg, Germany). Given that most of the sequences published in the GenBank are labeled as *Platygaster* sp. and *Mesopolobus* sp. it was not possible to identify information related to each species of the Italian parasitoid complex, in the DNA sequences alignments for primer design. In fact, up to now no COI sequences are available nor for *P. oleae* nor for *M. aspilus* or *M. mediterraneus*. However, in order to increase the reliability of primers for parasitoid detection, sequences obtained from our specimens (GeneBank accession numbers: from MW703634 to MW703656) were aligned with those from *Mesopolobus* spp. ($n = 312$) and *Platygaster* spp. ($n = 710$) available in GenBank.

A conserved region of COI of each target genera was selected to design reverse primers, while forward primers were created to be more specific and anneal with the COI sequences of our specimens. Six forward and two reverse primers were designed using Primer Express 3.0 software (Life Technologies, Carlsbad, CA, USA) for the detection of *Platygaster* and *Mesopolobus* specimens as reported in Table 2.

2.2.3 Primer specificity

The specificity of the primer sets was initially tested in separate PCR reactions with DNA of 16 *Platygaster* spp. and seven *Mesopolobus* spp. specimens, as well as with DNA from five adults and five larvae of *D. oleae*. We focused on these species because they constitute the parasitoid complex of *D. oleae* in our country,⁹ no other parasitoid species have been recorded until now.

Different thermocycling conditions were evaluated to find the optimum reaction settings for PCR amplification and identify the most suitable primer pairs for our study. From the set of primers assayed, two forward and two reverse primers were selected for the detection of *Platygaster* (Platy 92F/Platy 344R) and *Mesopolobus* genera (Meso 90F/Meso 518R). Cycling conditions consisted of an initial denaturation step at 94°C for 2 min, followed by 35 cycles of amplification: 10 s at 94°C , 10 s at $37\text{--}45^{\circ}\text{C}$, and 45 s at 72°C , with ramping rates of $0.5^{\circ}\text{C s}^{-1}$. A post-PCR final elongation for 2 min at 72°C closed the amplification process. Amplicons were separated by electrophoresis in 1% agarose gel and analyzed under UV light after staining with ethidium bromide. All combinations of primers were also tested in multiplex qPCR confirming what was seen by previous single PCR reactions. For a detailed description of amplification settings refer to the specification provided in Section 2.2.5.

Table 2. Primer description

Oligo name	Sequence 5'-3'	T_m ($^{\circ}\text{C}$)	GC-content (%)
Meso 90F	CGTTTAGAATTGGGWAAYCCTG	57.5	43.2
Meso 308F I	ATTAATATTACTAATTCWAGWATATTT	50.5	10.7
Meso 308F II	ATTAATACTACTGATTTCAAGWATATTT	53.4	17.9
Meso 518R	GGAATATTTTCWATTTTAWRAATTT	49.0	14
Platy 92F	ATTAGAATTAGGGACACCTTC	54.0	38.1
Platy 225F I	TTARTTCCTTTAATAWTATC	44.0	17.5
Platy 225F II	CTTRTACCATTAATATTRTC	47.0	25
Platy 344R	CCTGCTCCAAAATAYTWCTRT	54.7	36.4

Note: T_m , melting temperature; GC-content, guanine and cytosine content.

2.2.4 Primer sensitivity

Primers pairs were selected with the aim to develop a practical tool for rapidly assessing the potential of biological control in olive orchards by providing a 'snapshot' of the parasitism rate at the beginning of the season. *Dasineura oleae* galls were collected in early February when mainly third instar larvae are present in the field. *Platygaster* spp. are egg-larval parasitoids with one generation per year synchronized with the host life cycle. Based on the scarce literature available¹⁰ and as confirmed by our experience, embryonic development of this parasitoid genera occurred in correspondence of third instar host. Thus, the probability of having missing *Platygaster* spp. detection is very low, given that molecular analysis revealed parasitized second instar larvae. However, no literature is available regarding *Mesopolobus* spp. development in *D. oleae* host. For this reason, primer sensitivity was also directly tested by multiplex qPCR with serial ten-fold dilutions (from 10^{-1} to 10^{-5}) of DNA extracted from *P. demades* and *Mesopolobus* spp. and diluted in *D. oleae* template.

2.2.5 Multiplex qPCR assay

PCR reaction was performed in a multiplex format in a final volume of 20 μ L using the KAPA SYBR® FAST Universal Kit (KAPA Biosystems, Wilmington MA, USA). The multiplex qPCR protocol was optimized by adjusting cycling conditions and testing different concentrations for each combination of primers (0.5, 1 and 2 μ L). Optimal reaction condition used 10 μ L Master Mix (2 \times), 0.25 μ L High ROX, 1 μ L each of Platy 92F/Platy 344R (10 μ mol L⁻¹), 2 μ L each of Meso 90F/Meso 518R (10 μ mol L⁻¹), 3 μ L of DNA template and 0.75 μ L of nuclease free water.

The amplification settings included an initial activation of the TaqDNA polymerase at 95 °C for 10 min, followed by 40 cycles of 15-s denaturation at 95 °C, 10-s annealing at 50 °C and 60 s extension at 60 °C. Each amplification run included positive and negative controls.

After amplification was complete, a final melting curve was recorded by heating to 95 °C for 15 s and then cooling to 60 °C for 20 s before heating slowly until a temperature of 95 °C was attained in 20 min. Fluorescence was measured continuously during the slow temperature rise to monitor the dissociation. The real-time PCR data were analyzed with ABI PRISM 7000 SDS v1.2.3 data analysis software (Thermo Fisher Scientific, Waltham, MA, USA). The resulting melting curves were converted into their

negative first-order derivatives, which allows the melting temperature (T_m) of the amplicons to be determined from the peak. The entire process required about 30 min.

2.3 Data analysis

The difference between the two methods for parasitization level evaluation (multiplex qPCR and visual inspection of the larvae) was assessed using McNemar's test for paired nominal data. The test was applied to the entire sample, then we also evaluated the difference between the traditional and molecular methods for each larval stage and each olive orchard. We calculated the percentage of parasitization for each method using the formula:

$$\% \text{parasitization} = P_s / (P_s + M) \times 100$$

where P_s is the number of parasitized specimens and M is the number of unparasitized *D. oleae* larvae.¹⁰ For the percentages of parasitization, the binomial confidence interval was calculated.

3 RESULTS

Amplification signals were detected in qPCR reactions when selected primer pairs Platy 92F/Platy 344R and Meso 90F/Meso 518R were used in a single or multiplex qPCR reaction. Peaks of specific T_m values were observed after the dissociation curves analyses, considered a standard approach to discriminate qPCR products in multiplex reaction, allowing us to distinguish among *Platygaster* spp. ($T_m = 74.8^\circ\text{C}$) and *Mesopolobus* spp. ($T_m = 76.6^\circ\text{C}$) (Fig. 1). Moreover, fragments of the expected sizes (252 and 428 bp, respectively) were shown when qPCR reactions were analyzed by agarose electrophoresis (data not shown). Amplification signal was also observed with DNA from non-parasitized *D. oleae*, however it has been clearly characterized by different dissociation curves and T_m (68.2°C) (Fig. 1). Additionally, both sets of primer showed good sensitivity with a DNA detection limit of 10^{-3} for *Platygaster* spp. and 10^{-2} for *Mesopolobus* spp.

Overall, 979 *D. oleae* galls were dissected and larvae were visually inspected and subsequently subjected to molecular analyses (Table 3). Of these, 106 (10.82%) were considered as parasitized by visual inspection, while qPCR detected 189 larvae parasitized by *Platygaster* spp. (19.31%) (Fig. 2). On the one hand, 89.27% of the results obtained by visual inspection were confirmed by the

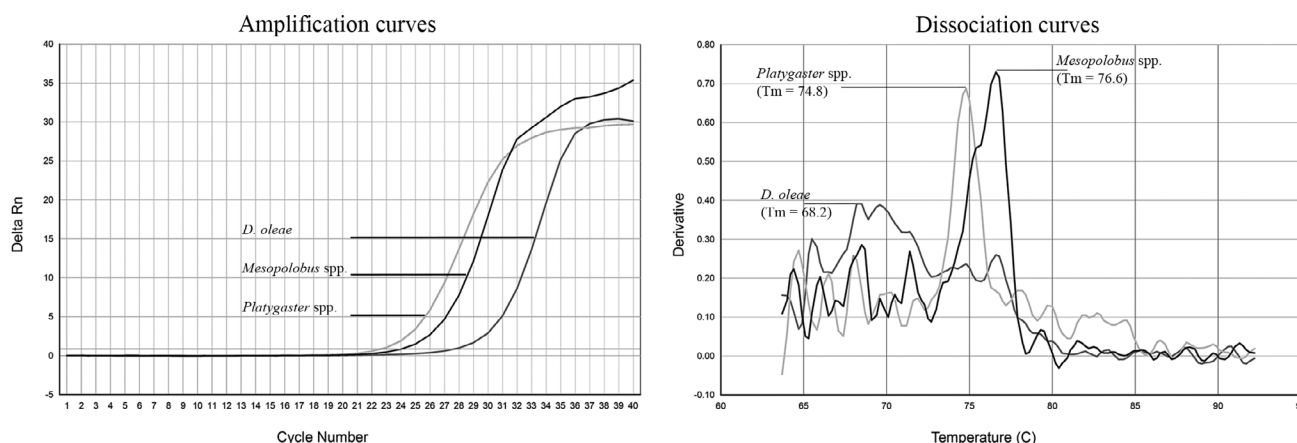


Figure 1. Amplification curves (left panel) and dissociation curves analysis (right panel) obtained by multiplex qPCR on DNA extracted from *Platygaster* spp., *Mesopolobus* spp. and *Dasineura oleae* samples. Both parasitoids and host are easily discriminated from each other by the different melting temperature (T_m) and shape of the dissociation curves.

Table 3. Number of analyzed larvae grouped by category (second instar, third instar and 'other') and by sampling site (olive orchard)

Olive orchard	Second instar larvae	Third instar larvae	Other	Total
1	35	84	15	134
2	13	184	10	207
3	18	174	1	193
4	5	203	1	209
5	10	224	2	236
Total	81	869	29	979

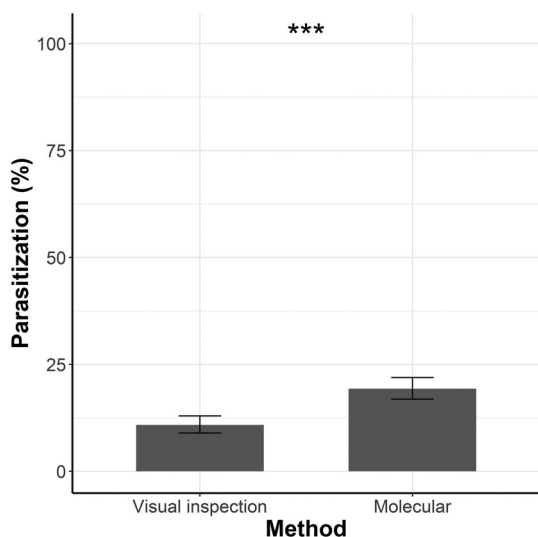


Figure 2. Parasitization (%) of *Dasineura oleae* larvae, according to the visual inspection and to the molecular analyses (sample size: 979 larvae). Binomial confidence intervals are reported. ***, $P < 0.001$, according to McNemar's test.

molecular analyses and a further 9.6% of parasitism was detected by PCR. On the other hand, 1.12% of the sample ($n = 11$) were considered as parasitized by visual inspection, but parasitism was not confirmed by the molecular tests. McNemar's test revealed a significant difference of parasitization (%) between the two methods ($\chi^2 = 64.038$, $df = 1$, $P < 0.001$).

Most of the analyzed larvae were third instars (88.76%), 8.27% (81 specimens) were second instar larvae and 2.96% specimens were categorized as 'other' due to their particular appearance (dead or dark larvae, larvae attacked by fungi). McNemar's test revealed a significant difference of parasitization (%) ($\chi^2 = 25.037$, $df = 1$, $P < 0.001$) between the two techniques for second instar larvae (Fig. 3). Indeed, 2.47% ($n = 2$) resulted parasitized when visually inspected, while molecular analyses revealed 35.80% ($n = 29$) of parasitism rate. A significant difference in parasitization (%) between the two methods was also detected for third instar larvae ($\chi^2 = 26.266$, $df = 1$, $P < 0.001$) (Fig. 3). Indeed, 11.97% of third instar larvae ($n = 104$) presented signs of parasitization when visually analyzed at the stereoscope, while PCR detected 16.80% of parasitized specimens ($n = 146$): 10.70% is due to validation of parasitism detected through visual inspection and an additional 6.1% is due to further 53 parasitized specimens that were not detected by visual inspection. However, 1.26% of third instar larvae appeared to be parasitized when visually inspected, but no parasitoids were detected by molecular analysis.

Additionally, 29 larvae were categorized as 'other' and due to their appearance were considered not parasitized but molecular analyses detected 48.28% of parasitization ($n = 14$).

The percentage of parasitization in the different sampling sites, according to the two different methods, is shown in Fig. 4. Results obtained by the two methods significantly differ in olive orchard 1 ($\chi^2 = 41.49$, $df = 1$, $P < 0.001$), olive orchard 2 ($\chi^2 = 17.455$, $df = 1$, $P < 0.001$) and olive orchard 5 ($\chi^2 = 5.7857$, $df = 1$, $P = 0.016$), but do not present relevant differences in olive orchards 3 and 4. In particular, in olive orchard 1, parasitization assessed by visual inspection was 33.58% ($n = 45$) while molecular analyses detected 68.66% ($n = 92$) of parasitized larvae. The

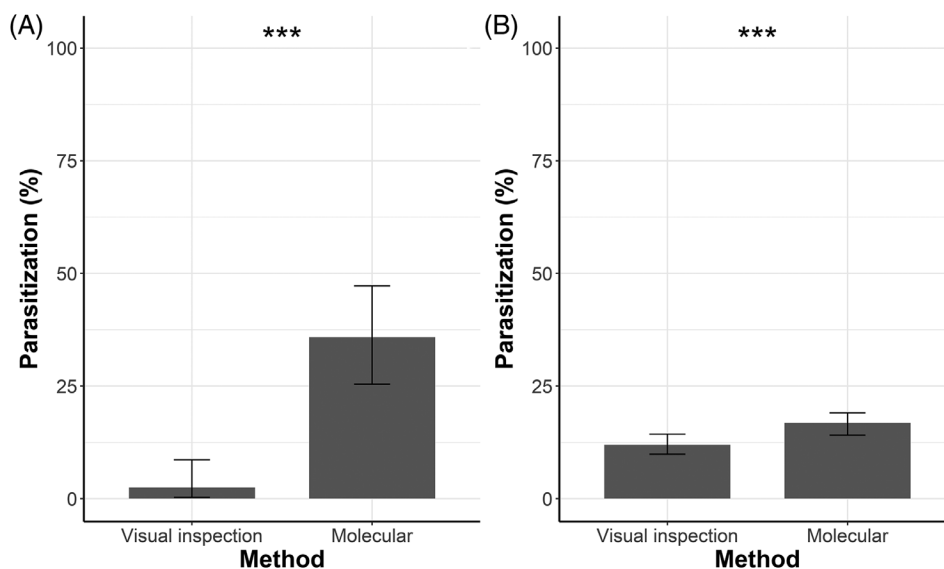


Figure 3. Percentage of parasitization with a binomial confidence interval of second (A) and third (B) instar *Dasineura oleae* larvae according to visual inspection and molecular analyses. ***, $P < 0.001$, according to McNemar's test.

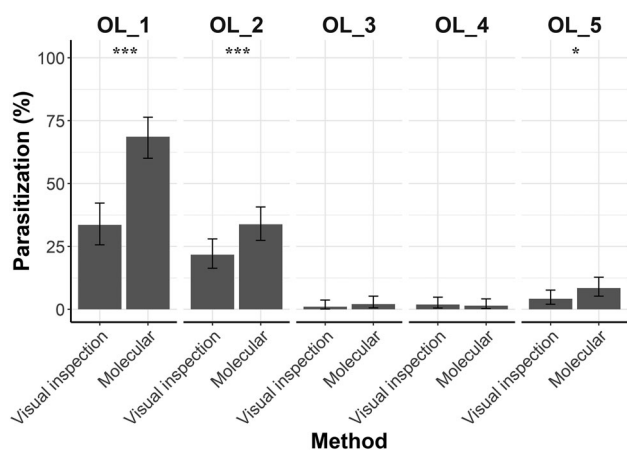


Figure 4. Percentages of parasitization with binomial confidence interval is reported for each olive orchard ('OL' in the figure) according to the two used methods. Significant differences between the two methods are reported ***, $P < 0.001$; *, $P < 0.05$, according to McNemar's test. Sampling size in OL_1 = 134; OL_2 = 207; OL_3 = 193; OL_4 = 209; OL_5 = 236.

molecular technique did not confirm parasitism assessed by visual inspection just in 1.49% ($n = 2$) of the samples. Similarly, in olive orchard 2, the molecular technique detected 33.82% ($n = 70$) of parasitized larvae, while parasitism assessed by visual inspection was 21.74% ($n = 45$). Here, molecular analyses did not validate 1.93% ($n = 4$) of the analyzed larvae that were considered as parasitized by visual inspection. In olive orchard 5, parasitism was 4.24% ($n = 10$) and 8.47% ($n = 20$), by visual inspection and molecular technique, respectively. Just in 0.84% ($n = 2$) of the cases the parasitism assessment done by visual inspection was not confirmed by the molecular analyses.

Laboratory reared infested branches failed to provide a reliable estimation of parasitism rate and relative abundance of the key parasitoids *Platygaster* spp. and *Mesopolobus* spp. Indeed, high mortality rates were recorded for both the first (87.86%) and second (63.46%) sampling date. *Platygaster demades* represented 4.92% ($n = 6$) of emerged specimens of the first sampling date and 2.52% ($n = 9$) of the second sampling date and it was detected in olive orchard 1 (seven specimens), olive orchard 2 (six specimens) and olive orchard 5 (two specimens). Five *Mesopolobus* spp. (1.4% of emerged specimens) emerged from the infested branches collected on the second sampling date from olive orchard 5 (four specimens) and olive orchard 3 (one specimen).

4 DISCUSSION AND CONCLUSIONS

Here we report the first development and application on a large-scale field trial of a molecular method to detect the most common parasitoids genera (*Platygaster* spp. and *Mesopolobus* spp.) of *D. oleae* in Italian olive orchards. The protocol that has been developed during this study allows to evaluate parasitization rate quickly by a simple molecular technique based on a multiplex qPCR assay. All procedures included in the protocol were effective and timesaving, allowing analysis of numerous samples simultaneously.

The lack of sequences on GenBank relative to *P. oleae* and *M. aspilus*, together with the scarce information on *M. mediterraneus*, did not allow us to obtain species-specific primers for the four most common parasitoid species reported

in Italian olive orchards. Reliability of sequences obtained from our specimens have been consolidated by comparison to representatives of genetic variability available on GenBank for both *Platygaster* (Supporting Information Fig. S1) and *Mesopolobus* (Fig. S2) genera. All Italian sequences from *Platygaster* specimens grouped together with *P. demades* samples from Canada showing nucleotide variability within group ranging from 92.1% to 97.0% (data not shown). Additionally, five of the sequences from Italian *Mesopolobus* specimens formed a clade with the *M. mediterraneus* isolate from the United Kingdom, with nucleotide identity ranging between 94.5% and 99.2% (data not shown), confirming the consistency of sequences used to design primers. Interestingly, two Italian *Mesopolobus* specimens showed higher nucleotide identity (from 84.0% to 88.2%, data not shown) with *M. lichtensteini* accessions from Spain suggesting a species variability in the olive orchards surveyed.

Primers designed under the alignments described anneal with the COI sequences of *Mesopolobus* and *Platygaster* adult specimens and discriminate very clearly between parasitized and non-parasitized host samples. The qPCR assay on the field-collected specimens showed the presence of *Platygaster* spp. in all parasitized samples, confirming the importance of this group in the biological control of *D. oleae*.²⁵ Even though Pteromalidae are not abundant in olive orchards of the study area²⁵ and few specimens were obtained from laboratory-reared infested olive branches, detection of some parasitism by *Mesopolobus* spp. by molecular assay was expected. Moreover, *M. aspilus* and *M. mediterraneus* are known as polyphagous species,²⁷ and are recorded as endoparasitoids of *D. oleae*.⁷ Despite that, molecular results show a lack of parasitism by *Mesopolobus* spp in *D. oleae* larvae in the assayed olive orchards, suggesting that these species may be a pupal parasitoid of *D. oleae*.

The application of the newly developed protocol on larvae from field-collected galls of *D. oleae* demonstrated that the molecular approach is more sensible than visual inspection, detecting almost double parasitization when compared to traditional methods. This is in agreement with previous studies showing that molecular method may provide parasitization estimation similar to traditional methods²¹ or considerably higher, leading to three-fold times the parasitism estimated by traditional methods.²² The magnitude of difference between the methods presumably depends on the biology of the studied species, the sensitivity of the used techniques as well as the development stage of both the pest and the parasitoid.²⁸ Indeed, our results show that significant differences between procedures were obtained in both the second and third stage-larva, with a particularly large gap in the second stage, for which qPCR revealed more than ten-fold times the parasitism rate estimated by visual inspection. This result can be explained by the fact that, usually, parasitization is not evident until *D. oleae* develop into third stage-larva. This evidence also highlights that using traditional methods may lead to serious parasitization underestimation in the case of a high proportion of second instar larvae in the sample. Our result also shows the great potential of the developed molecular protocol to detect parasitism by *Platygaster* spp. in the pest early stages. Indeed, PCR-based methods are proved to be very sensitive and may be able to detect parasitism 1 h after the parasitoid oviposition.²⁹ Our field sampled specimens also included a small fraction of larvae attacked by fungi, dead or dark larvae with no evident signs of parasitism. The qPCR revealed that nearly half of them were parasitized, suggesting that parasitism is still detectable, with molecular techniques, despite natural mortality. Overall,

qPCR confirmed the result obtained by visual inspection and revealed some additional parasitism that the traditional method cannot detect. However, a small fraction of specimens showed signs of parasitism when visually inspected, that was not detected by the molecular analyses. We can hypothesize the presence of a rare parasitoid species that was not observed in previous studies on this pest in Italy and that did not emerge from laboratory-reared infested branches.

Our results show significant differences in parasitism assessment by visual inspection and molecular method in the orchards that presented higher parasitism rates. In olive orchard 1 and in olive orchard 5, parasitization estimation by qPCR is more than double the estimation performed by visual inspection, while this discrepancy between the two methods decreases in orchards with lower parasitization. This suggests that the underestimation of parasitization may be greater in highly parasitized orchards, underlining that parasitization estimation by traditional method could lead to the recommendation of the wrong pest control strategies.

The laboratory rearing of *D. oleae* parasitoid showed that this technique is poorly suitable for *D. oleae* parasitization assessment, indeed high mortality rates under laboratory conditions may be common.^{28,30} This method is time-consuming also requiring large space availability and employment of specialized personal. However, despite the evidence of the better performance of the PCR-based parasitization estimation, laboratory rearing demonstrated to be useful for the first/preliminary identification of the parasitoid species of pests in the geographical area considered.

In conclusion, we developed a new multiplex qPCR protocol coupled to fast DNA extraction to estimate parasitism in *D. oleae* and we compared its performance with traditional methods. Field results show that PCR-based method provides a faster and more accurate estimation of parasitization than visual inspection of the larvae. The application on a greater scale of this newly developed method could be fundamental in the determination of the biological control potential in olive orchards and therefore in the implementation of the CBC and IPM strategies. Further studies should confirm the reliability of this method on a larger sample of second instar larvae, also considering the age of the larvae (e.g. young second instar larvae in summer and mature second instar larvae in autumn). This perspective would allow an estimation of the parasitization rate several months in advance if compared to traditional methods, enabling the optimization of pesticide use against *D. oleae* and therefore preserving parasitoid communities. A larger-scale application of this method would also allow the definition of a threshold of parasitization rate (according to the 'threshold for success' of biological control³¹ above which chemical control is no longer necessary).

ACKNOWLEDGEMENTS

The authors would like to thank Alice Albertini for advice and support in the conceptualization of the initial phase of this study, Chiara Lanzoni and Mattia Dall'Ara for the assistance in laboratory activities and the Prof. Peter Neerup Buhl for the identification of parasitoids.

AUTHOR CONTRIBUTIONS

SM: data curation, investigation, methodology, writing – original draft preparation; ET: data curation, investigation, methodology, writing – original draft preparation; GB: supervision, resources,

writing – reviewing and editing; CR: supervision, resources, data curation, writing – reviewing and editing; RP: conceptualization, methodology, resources, writing – reviewing and editing.

DATA AVAILABILITY STATEMENT

The data that support the findings of this study are available from the corresponding author upon reasonable request.

SUPPORTING INFORMATION

Supporting information may be found in the online version of this article.

REFERENCES

- Barnes HF, Gall midges of economic importance, in *Vol. VII of the Gall Midges of Cereal Crops*. Lockwood & Son Ltd, London, p. 261 (1956).
- Barnes HF, Gall midges of economic importance, in *Vol. III of the Gall Midges of Fruit*. Lockwood & Son Ltd, London, pp. 184 (1948).
- Hahn NG and Isaacs R, Distribution and phenology of *Dasineura oxycoccana* (Diptera: Cecidomyiidae) in Michigan blueberries. *Environ Entomol* **41**:455–462 (2012).
- Skuhřavý V, Skuhřavá M and Brewer J, Evaluation of plant damage caused by three species of gall midges (Diptera: Cecidomyiidae). *Z Fuer Angew Entomol* **90**:184–190 (1980).
- Yang WQ, Blueberry gall midge: a possible new pest in the northwest: identification, life cycle, and plant injury, in OSU extension service publications. EM 8889 (2005).
- Batta YA, New findings on infestation and phenology of *Dasineura oleae* Angelini (Diptera, Cecidomyiidae): an emerging pest on olive trees in the Palestinian territories. *J Plant Dis Prot* **126**:55–66 (2019).
- Doğanlar M, Parasitoids complex of the olive leaf gall midges, *Dasineura oleae* (Angelini 1831) and *Lasioptera oleicola* Skuhřavá, 2011 (Diptera: Cecidomyiidae) in Hatay Turkey, with descriptions of new genus and species from Tetrastichinae (hymenoptera: Eulophidae). *Türkiye Entomoloji Derg* **35**:245–264 (2011).
- Simoglou K, Karataraki A, Roditakis N and Roditakis E, *Euzophera bigella* (Zeller) (Lepidoptera: Pyralidae) and *Dasineura oleae* (F. low) (Diptera: Cecidomyiidae): emerging olive crop pests in the Mediterranean? *J Pest Sci* **85**:169–177 (2012).
- Tondini E and Petacchi R, First observations on the parasitoid complex and on the biology of *Dasineura oleae* during an outbreak in Tuscany, Italy. *Bull Insectol* **72**:93–102 (2019).
- Sampson BJ, Rinehart TA, Liburd OE, Stringer SJ and Spiers JM, Biology of parasitoids (hymenoptera) attacking *Dasineura oxycoccana* and *Prodiplosis vaccinii* (Diptera: Cecidomyiidae) in cultivated blueberries. *Ann Entomol Soc Am* **99**:113–120 (2006).
- Roubos CR and Liburd OE, Parasitism of *Dasineura oxycoccana* (Diptera: Cecidomyiidae) in north Central Florida. *Environ Entomol* **42**:424–429 (2013).
- Baidaq Z, Ramadhane A and Tara R, Biological synchronization of the endoparasitoid *Platygaster demades* Walker (hymenoptera: Platygastridae) with its host the olive leaf midge *Dasineura oleae* F. Loew (Diptera: Cecidomyiidae). *Int J Agric Environ Sci* **2**:1–8 (2015).
- Yegorenkova E and Yefremova Z, Notes on *Lasioptera rubi* (Schränk) (Diptera: Cecidomyiidae) and its larval parasitoids (hymenoptera) on raspberries in Russia. *Entomol Fenn* **27**:15–22 (2016).
- Day W, Estimating mortality caused by parasites and diseases of insects: comparisons of the dissection and rearing methods. *Environ Entomol* **23**:543–550 (1994).
- Sow A, Brévault T, Benoit L, Chapuis M-P, Galan M, Coeur d'acier A et al., Deciphering host-parasitoid interactions and parasitism rates of crop pests using DNA metabarcoding. *Sci Rep* **9**:1–12 (2019).
- Goater TM, Goater CP and Esch GW, *Parasitism: The Diversity and Ecology of Animal Parasites*. Cambridge University Press, Cambridge (2014).
- Gardiner MM, Fiedler AK, Costamagna AC and Landis DA, Integrating conservation biological control into IPM systems, in *Integrated Pest Management. Concepts, Tactics, Strategies and Case Studies*, ed. by Radcliffe EB, Hutchison WD and Cancelado RE. Cambridge University Press, Cambridge, pp. 151–162 (2009).

- 18 Gurr GM and You M, Conservation biological control of pests in the molecular era: new opportunities to address old constraints. *Front Plant Sci* **6**:1255 (2016).
- 19 Franck P, Maalouly-Matar M and Olivares J, Molecular tools for the detection and the identification of hymenoptera parasitoids in torricid fruit pests. *Int J Mol Sci* **18**:2031 (2017).
- 20 Frey JE, Frey B and Baur R, Molecular identification of the swede midge (Diptera: Cecidomyiidae). *Can Entomol* **136**:771–780 (2004).
- 21 Garipey T, Kuhlmann U, Gillott C and Erlandson M, Parasitoids, predators and PCR: the use of diagnostic molecular markers in biological control of arthropods. *J Appl Entomol* **131**:225–240 (2007).
- 22 Papura D, Rusch A, Roux P, Delbac L and Thiéry D, Early detection and identification of larval parasitoids in *Lobesia botrana* using PCR-RFLP method. *Biol Control* **103**:95–100 (2016).
- 23 Pook VG, Athey KJ, Chapman EG, Clutts-Stoelb SA and Sharkey MJ, New PCR primers enhance investigation of host-parasitoid food webs. *Entomol Exp Appl* **162**:309–314 (2017).
- 24 Singh S, Mishra V and Bhoi TK, Insect molecular markers and its utility-a review. *Int J Agric Environ Biotechnol* **10**:469–479 (2017).
- 25 Tondini, E, Sommaggio, D, Monteforti, G and Petacchi, R, Conservation Biological Control in olive orchards during an outbreak of *Dasineura oleae*: local and landscape effects on parasitoid communities. Manuscript in preparation (2021).
- 26 Folmer O, Hoeh W, Black M and Vrijenhoek R, Conserved primers for PCR amplification of mitochondrial DNA from different invertebrate phyla. *Mol Mar Biol Biotechnol* **3**:294–299 (1994).
- 27 Graham MWRV, The Pteromalidae of North-Western Europe (hymenoptera: Chalcidoidea). *Bull Brit Mus (Nat Hist) (Entomol) Suppl* **16**:1–908 (1969).
- 28 Garipey T, Kuhlmann U, Gillott C and Erlandson M, A large-scale comparison of conventional and molecular methods for the evaluation of host-parasitoid associations in non-target risk-assessment studies. *J Appl Ecol* **45**:708–715 (2008).
- 29 Zhu YC, Riddick EW, Williams L, Schotzko DJ, Logarzo GA and Jackson CG, Potential of detection and identification of nymphal parasitoids (hymenoptera: Braconidae) of Lygus bugs (Heteroptera: Miridae) by using polymerase chain reaction and ITS2 sequence analysis techniques. *Ann Entomol Soc Am* **97**:743–752 (2004).
- 30 Agusti N, Bourguet D, Spataro T, Delos M, Eychenne N, Folcher L *et al.*, Detection, identification and geographical distribution of European corn borer larval parasitoids using molecular markers. *Mol Ecol* **14**:3267–3274 (2005).
- 31 Hawkins BA and Cornell HV, Maximum parasitism rates and successful biological control. *Science* **266**:1886–1887 (1994).