









ORIGINAL RESEARCH

Mid- to Late-Life Time-Averaged Cumulative Blood Pressure and Late-Life Retinal Microvasculature: The ARIC Study

Yiquan Huang , PhD*; Huimin Zhou, PhD*; Shaozhao Zhang , PhD; Xiangbin Zhong, PhD; Yifen Lin , PhD; Zhenyu Xiong , PhD; Menghui Liu , PhD; Aili Yimamu, MD; Odong Christopher , MD; Ziwei Zhou, MD; Xiaodong Zhuang , MD, PhD; Xinxue Liao , MD, PhD

BACKGROUND: The associations of time-averaged cumulative blood pressure (BP) from midlife to late life with microvasculature expressed as retinal vessel diameters is not well studied. The aim of this study was to evaluate the association of cumulative systolic BP and diastolic BP (DBP) with retinal vessel calibers, focusing on race differences.

METHODS AND RESULTS: The analysis included 1818 adults from the ARIC (Atherosclerosis Risk in Communities) study attending the fifth visit (2011–2013; age 77±5 years, 17.1% Black participants). Time-averaged cumulative BPs were calculated as the sum of averaged BPs from adjacent consecutive visits (visits 1–5) indexed to total observation time (24±1 years). Summarized estimates for central retinal arteriolar equivalent and central retinal venular equivalent at the fifth visit represent average retinal vessel diameters. The arteriole:venule ratio was calculated. We tested for effect modification by race. Results from multiple linear regression models suggested that higher time-averaged cumulative DBP (β [95% CI] per 1-SD increase: -1.78 [$-2.53, -1.02$], $P<0.001$ and -0.005 [$-0.009, -0.002$], $P=0.004$, respectively) but not systolic BP (-0.52 [$-1.30, 0.26$], $P=0.189$ and 0.001 [$-0.002, 0.005$], $P=0.485$, respectively) was associated with smaller central retinal arteriolar equivalent and arteriole:venule ratio. The association between time-averaged cumulative DBP and arteriole:venule ratio was strongest in White participants (interaction $P=0.007$). The association of cumulative systolic BP and DBP with central retinal venular equivalent was strongest in Black participants (interaction $P=0.015$ and 0.011 , respectively).

CONCLUSIONS: Exposure to higher BP levels, particularly DBP, from midlife to late life is associated with narrower retinal vessel diameters in late life. Furthermore, race moderated the association of cumulative BP exposure with retinal microvasculature.

Key Words: blood pressure ■ microcirculation ■ race

Histologically, retinal arterioles (measured as the central retinal arteriolar equivalent [CRAE]) and retinal venules (measured as the central retinal venular equivalent [CRVE]) offer a unique opportunity for the direct, noninvasive study of the human microvasculature. Retinal microvascular abnormalities have been shown to be prognostically important in a variety of diseases, including hypertension,^{1–3} stroke,^{4–7} and dementia^{8,9} as well as diabetes,¹⁰ peripheral artery

disease,¹¹ and atherosclerotic cardiovascular disease (CVD) events.¹²

Previous studies show that hypertension status and elevated blood pressure (BP) are risk factors for retinal vessel abnormalities.^{13–17} Former studies have demonstrated that cumulative BP, an integrated assessment of long-term severity and duration of BP exposure, was associated with incipient myocardial dysfunction^{18,19} and increased urine

Correspondence to: Xinxue Liao, MD, PhD, or Xiaodong Zhuang, MD, PhD, Cardiology Department, First Affiliated Hospital of Sun Yat-Sen University, 58 Zhongshan 2nd Road, Guangzhou 510080, China. Email: liaoxinx@mail.sysu.edu.cn; zhuangxd3@mail.sysu.edu.cn

*Y. Huang and H. Zhou are co-first authors and contributed equally.

Supplemental Material is available at <https://www.ahajournals.org/doi/suppl/10.1161/JAHA.122.025226>

For Sources of Funding and Disclosures, see page 8.

© 2022 The Authors. Published on behalf of the American Heart Association, Inc., by Wiley. This is an open access article under the terms of the [Creative Commons Attribution-NonCommercial-NoDerivs](https://creativecommons.org/licenses/by-nc-nd/4.0/) License, which permits use and distribution in any medium, provided the original work is properly cited, the use is non-commercial and no modifications or adaptations are made.

JAHA is available at: www.ahajournals.org/journal/jaha

CLINICAL PERSPECTIVE

What Is New?

- Cumulative diastolic blood pressure but not systolic blood pressure from midlife to late life is associated with late-life retinal arteriolar narrowing, and the importance of blood pressure as a risk factor differs between Black individuals and White individuals.

What Are the Clinical Implications?

- The findings suggest that decreased retinal vessel diameters in late life may result from the cumulative effects of elevated blood pressure, particularly diastolic blood pressure, from midlife to late life and underscore the need for targeted interventions based on racial differences.

Nonstandard Abbreviations and Acronyms

ARIC	Atherosclerosis Risk in Communities Study
AVR	arteriole:venule ratio
CRAE	central retinal arteriolar equivalent
CRVE	central retinal venular equivalent
DBP	diastolic blood pressure
SBP	systolic blood pressure

albumin:creatinine ratio progression²⁰ as well as the risk of coronary heart disease²¹ and heart failure.^{21,22} However, limited data exist regarding the relationship of cumulative BP from midlife to late life with late-life retinal vessel diameters. Furthermore, different BP components reflect distinctive hemodynamics and pathophysiologic mechanisms,^{23–26} and which BP component plays a dominant role of the damage to microcirculation is poorly understood. Finally, it has been reported that both retinal vascular caliber and BP levels vary by race.^{27–29} Racial differences in the impact of elevated BP on CVD and other end points have been shown in previous studies.^{24,30–32} However, how race affects the relation of BP with microvasculature remains unclear.

Building on this background, in this study we examined the association of time-averaged cumulative BP assessed for 25 years with late-life microvasculature among 1885 adults in the Atherosclerosis Risk in Communities (ARIC) study. In addition, we compared the magnitude and strength of associations of cumulative systolic BP (SBP) with cumulative diastolic BP (DBP) and of White individuals with Black individuals.

METHODS

The data, analytic methods, and study materials will not be made available to other researchers for purposes of reproducing the results or replicating the procedure. The ARIC study's data and materials are publicly available to qualified investigators.

Study Population

The ARIC study is an ongoing, prospective observational study of CVD and atherosclerosis that recruited a total of 15 792 participants aged 45 to 64 years between 1987 and 1989 (visit 1) from 4 communities in 4 US centers (Forsyth County, NC; Jackson, MS; Minneapolis, MN; and Washington County, MD). The second visit was accomplished in 1990 to 1992, the third in 1993 to 1995, the fourth in 1996 to 1998, and the fifth in 2011 to 2013.³³ Participants provided written informed consent, and the study's protocol was approved by the institutional review board of each participating institution.

Of the 6538 participants who attended the fifth visit, we evaluated participants who underwent complete BP measurement from visit 1 to visit 5 and had gradable retinal photography with >6 arteries and veins graded at visit 5 (n=2000). Participants missing data on covariates were excluded (n=115). We also excluded participants with retinal abnormalities in both eyes (retinopathy, macular edema, focal narrowing, arterio-venous nicking, artery or vein occlusions, and other pathologies; n=67), leaving a sample size of 1818 for final analysis. Table S1 shows the characteristics of included and excluded participants. Compared with participants in the current study, participants excluded for missing or ungradable retinal data were more likely to be young, female, and Black participants who smoked and had high DBP levels.

Imaging of the Retinal Microvasculature

The retinal photography procedure and measurement of retinal vascular caliber were described in detail previously.^{34,35} Digital, nonmydriatic retinal fundus photographs were taken and evaluated by trained graders at the ARIC Study Retinal Reading Center in the Department of Ophthalmology, University of Wisconsin–Madison. Using a semiautomatic method, the results from image analysis were summarized quantitatively as CRAE and CRVE, representing average arteriolar and venular diameter, respectively.^{36,37} The arteriole:venule ratio (AVR) was CRAE divided by CRVE, which eliminates the magnification differences between photographs. For analysis, we averaged each participant's measurements at both eyes. If data were missing from 1 eye, data available from the other eye were selected.^{16,38}

BP and Time-Averaged Cumulative BP

At each examination, BP was measured 3 times with standardized protocols after participants had been seated for 5 minutes and recorded by trained technicians. For all visits except the fourth, an average of the second and the third BP measurements was recorded with a random-zero sphygmomanometer.³⁹

Time-averaged cumulative BPs were calculated as the sum of averaged BPs from adjacent consecutive visits (visits 1–5) indexed to total observation time between visit 1 and 5 (mean time 24±1 years) as follows²² (see also Figure S1):

$$\left[\text{time}_{1-2} \times (\text{BP}_1 + \text{BP}_2) / 2 + \text{time}_{2-3} \times (\text{BP}_2 + \text{BP}_3) / 2 + \text{time}_{3-4} \times (\text{BP}_3 + \text{BP}_4) / 2 + \text{time}_{4-5} \times (\text{BP}_4 + \text{BP}_5) / 2 \right] \div \text{time}_{1-5},$$

where BP₁, BP₂, BP₃, BP₄, and BP₅ indicate BP at visits 1, 2, 3, 4, and 5 and time₁₋₂, time₂₋₃, time₃₋₄, and time₄₋₅ indicate the participant-specific time interval between consecutive visits 1 to 5 in years. Time₁₋₅ means total time between visits 1 and 5.

Definition of Other Variables

All covariates were assessed at visit 5. Body mass index was calculated as body weight in kilograms divided by height in squared meters. Hypertension was defined as SBP ≥140 mmHg and/or DBP ≥90 mmHg, or BP medicine use in the past 2 weeks. Diabetes was defined as hemoglobin A1C value ≥6.5% or using medication for diabetes or self-report diagnosis of diabetes. Information about age, race, sex, and smoking and drinking status was self-reported.

Statistical Analysis

Continuous variables were expressed as mean and SD and compared using Student *t* tests. Categorical variables were expressed as number and percentage and compared using χ^2 statistics. We also explored the relationship between tertiles of time-averaged cumulative BP with retinal vessel diameters using ANCOVA.

We used multivariable linear regression models to assess the association between time-averaged cumulative BP from midlife to late life and retinal vessel diameters at visit 5 (all as continuous variables). The primary exposures were measures of time-averaged cumulative SBP and cumulative DBP (*z* scores). The primary outcome variables were CRAE, CRVE, and AVR. All analyses were performed in 2 models. In model 1, analyses were adjusted for age, sex, race, and body mass index at visit 5. In model 2, analyses were additionally adjusted for smoking status, drinking status, triglycerides, low-density lipoprotein, high-density lipoprotein, prevalence of diabetes, prevalence of hypertension, and

antihypertensive medication at visit 5. These covariates were selected as potential confounders because they are known to be related to BP or retinal vessels. In addition, all analyses in model 2 were repeated using visit 1 or visit 5 BP levels as the independent variable to examine the associations of cumulative BP for 25 years compared with BP at a single time point. To test whether race moderates the association of cumulative BP with retinal vessels, we repeated all the analyses in model 2 and tested for interaction (race×cumulative exposure to BP).⁴⁰ Similarly, effect modifications by hypertension or diabetes were tested using interaction models.

To corroborate our analyses, multivariable logistic regression analysis was used to evaluate the association of cumulative BP with generalized retinal arteriolar narrowing defined as CRAE within the lowest quintile in the population.^{17,38,41}

All statistical analyses were conducted with IBM SPSS Statistics version 26.0, and a *P*<0.05 was considered statistically significant.

RESULTS

Population Characteristics

Among the 1818 study participants, the mean (SD) age at the time of visit 5 (2011–2013) was 76.6 (5.2) years, 56.1% were women, and 17.1% were Black participants. The mean (SD) time-averaged cumulative exposure to SBP and DBP in the total cohort was 124.2 (12.7) mmHg and 69.3 (7.4) mmHg, respectively. Race-specific clinical characteristics of the included participants are given in Table 1. The time-averaged cumulative SBP, DBP, and mean arterial pressure; CRAE; CRVE; and prevalence of hypertension and diabetes were higher in Black people than in White people. However, age, current drinking status, triglycerides, and AVR were higher in White people than in Black people. In addition, time-averaged cumulative pulse pressure, and smoking status were similar between races.

Associations Between Time-Averaged Cumulative BP and Microvasculature

Results from the linear regression models to examine the association between time-averaged cumulative BP exposure and microvasculature are summarized in Table 2. Higher exposure to cumulative DBP was associated with CRAE, CRVE, and AVR in all models. By contrast, cumulative exposure to SBP was not associated with CRAE, CRVE, and AVR in any of the models. Figure 1 shows the adjusted mean (SE) of retinal phenotypes in tertiles of cumulative SBP and DBP. Retinal vessel diameters decreased linearly with increasing cumulative DBP, but did not show an association with cumulative SBP. In multivariable logistic

Table 1. Clinical Characteristics of Study Cohort by Race at Visit 5 (2011–2013)

Characteristics	White people (n=1507)	Black people (n=311)	P value
Age, y	76.8 (5.2)	75.9 (4.9)	0.004
Female sex, n (%)	813 (53.9)	204 (65.6)	<0.001
BMI, kg/m ² , mean (SD)	28.2 (5.3)	29.5 (6.5)	<0.001
Visit center, mean (SD)			<0.001
Forsyth County	400	17	
Jackson	0	294	
Minneapolis	619	0	
Washington County	488	0	
Smoking status, n (%)			0.457
Current	70 (4.6)	12 (3.9)	
Former	785 (52.1)	153 (49.2)	
Never	652 (43.3)	146 (46.9)	
Drinking status, n (%)			<0.001
Current	869 (57.7)	53 (17.0)	
Former	357 (23.7)	141 (45.3)	
Never	281 (18.6)	117 (37.6)	
Diabetes, n (%)	400 (26.5)	127 (40.8)	<0.001
Hypertension, n (%)	1078 (71.5)	263 (84.6)	<0.001
Antihypertensive medication, n (%)	1103 (73.2)	267 (85.9)	<0.001
SBP, mmHg, mean (SD)	128.9 (17.7)	132.9 (18.3)	<0.001
DBP, mmHg, mean (SD)	64.4 (10.4)	69.2 (10.5)	<0.001
Time-averaged cumulative SBP, mmHg, mean (SD)	123.2 (12.4)	129.3 (12.9)	<0.001
Time-averaged cumulative DBP, mmHg, mean (SD)	68.3 (7.1)	74.2 (7.3)	<0.001
Time-averaged cumulative PP, mmHg, mean (SD)	54.9 (10.7)	55.2 (10.3)	0.677
Time-averaged cumulative MAP, mmHg, mean (SD)	86.6 (7.7)	92.5 (8.2)	<0.001
LDL, mg/dL, mean (SD)	101.8 (34.4)	108.2 (35.6)	0.003
HDL, mg/dL, mean (SD)	51.6 (14.2)	54.0 (13.5)	0.007
Triglycerides, mg/dL, mean (SD)	129.2 (57.2)	107.1 (43.5)	<0.001
CRAE, μ m, mean (SD)	141.7 (14.6)	144.2 (13.6)	0.004
CRVE, μ m, mean (SD)	201.0 (21.0)	217.2 (22.9)	<0.001
AVR, mean (SD)	0.71 (0.07)	0.67 (0.07)	<0.001

P values were calculated by unpaired *t* test or χ^2 test. AVR indicates arteriolar:venular ratio; BMI, body mass index; CRAE, central retinal arteriolar equivalent; CRVE, central retinal venular equivalent; DBP, diastolic blood pressure; HDL, high-density lipoprotein; LDL, low-density lipoprotein; MAP, mean arterial pressure; PP, pulse pressure; and SBP, systolic blood pressure.

regression, time-averaged cumulative DBP (adjusted odds ratio [OR; 95% CI] per 1-SD increase, 1.25 [1.09, 1.43]; $P=0.001$), but not SBP (1.06 [0.92, 1.22], $P=0.443$), was associated with the odds of CRAE narrowing (Table S2).

Associations of Cumulative BP for 25 Years Compared With a Single BP Measurement

At baseline (visit 1), the mean age of the participants was 53 \pm 5 years, mean SBP was 116 \pm 16 mmHg, and mean DBP was 73 \pm 10 mmHg. The progression of

BP with increasing age varied by race (Figure S2). Table 3 shows the associations of cumulative BP for 25 years compared with a single BP measurement (at baseline or visit 5) with retinal phenotypes at visit 5. Higher baseline SBP was not associated with any of the retinal phenotypes, and higher baseline DBP was only associated with narrower retinal arterioles. SBP measured at visit 5 was only associated with narrower retinal venule. DBP measured at visit 5 was associated with narrower CRAE and CRVE and showed no relation to AVR. Cumulative DBP for 25 years had stronger effects on retinal arterioles than baseline or visit 5 BP (unstandardized β in Table 3).

Table 2. Time-Averaged Cumulative Systolic and Diastolic Blood Pressure in Relation to Retinal Phenotypes

Blood pressure per 1 SD higher	CRAE, μm		CRVE, μm		AVR	
	β (95% CI)	P value	β (95% CI)	P value	β (95% CI)	P value
Cumulative SBP						
Model 1	-0.51 (-1.20, 0.17)	0.143	-0.81 (-1.82, 0.21)	0.119	0.0003 (-0.003, 0.004)	0.835
Model 2	-0.52 (-1.30, 0.26)	0.189	-1.11 (-2.26, 0.04)	0.059	0.001 (-0.002, 0.005)	0.485
Cumulative DBP						
Model 1	-1.84 (-2.56, -1.13)	<0.001	-1.28 (-2.34, -0.22)	0.018	-0.005 (-0.008, -0.002)	0.003
Model 2	-1.78 (-2.53, -1.02)	<0.001	-1.17 (-2.28, -0.05)	0.040	-0.005 (-0.009, -0.002)	0.004

β represents unstandardized regression coefficient. Model 1: adjusted for age, sex, race, body mass index, and visit center at visit 5. Model 2: adjusted for Model 1+smoking status, drinking status, triglycerides, low-density lipoprotein, high-density lipoprotein, prevalence of diabetes, prevalence of hypertension, and antihypertensive medication at visit 5. AVR indicates arteriolar:venular ratio; CRAE, central retinal arteriolar equivalent; CRVE, central retinal venular equivalent; DBP, diastolic blood pressure; and SBP, systolic blood pressure.

Interaction Between Cumulative BP Exposure and Race

Figure 2 shows the association of cumulative BP with retinal phenotypes stratified by race. The association between cumulative exposure to BP and CRVE was strongest in Black participants (see also Figure S3), whereas the association between time-averaged cumulative DBP and AVR was strongest in White participants (interaction $P=0.007$). The association between cumulative DBP and CRAE was also stronger in White participants, but the interaction was not statistically significant (interaction $P=0.966$). There was not significant interaction between cumulative SBP exposure and race, in relation to CRAE, or AVR (interaction $P=0.383$ and 0.100 , respectively). Finally, the association between cumulative BP exposure and retinal vessels did not vary by diabetes or hypertension (Figures S4 and S5).

DISCUSSION

To our knowledge, our study is the first survey assessing the long-term relationship of BP through midlife to late life with late-life microvasculature. We report 2 novel findings. The main finding of this study is that exposure to higher BP starting in midlife is associated with narrower late-life microvasculature, and cumulative DBP plays a dominant role of the damage to microcirculation, especially to the retinal arterioles. Furthermore, we found that higher cumulative DBP for 25 years was associated with narrower retinal arterioles in White participants but not Black participants, whereas higher cumulative BP was associated with narrower retinal venules in Black participants but not White participants.

Cumulative BP From Midlife to Late Life and Late-Life Microvasculature

Previous data documented the independent effects of both current and past BP on small vessel caliber in the

retina, suggesting that retinal vessel narrowing may result from the cumulative effects of long-standing hypertension.^{15,17,42} Consistent with prior studies, our study showed that time-averaged cumulative BP from midlife to late life was associated with narrower retinal vessel caliber. However, past BP was obtained up to 10 years before retinal imaging and measured at a single time point in previous studies.^{15–17,42} Our study first explored the impact of BP measured for 25 years (baseline BP) before retinal imaging on retinal vessel diameters as well as incorporated the severity and duration of BP exposure for risk assessment in the community.

Accumulating evidence indicates that different components of BP provide some distinctive information about the hemodynamic alterations and may be associated to varying degrees with different cardiovascular outcomes.^{43–45} Our finding added to the evidence that cumulative DBP but not SBP from midlife to late life was associated with narrower retinal arterioles in late life. This finding was supported by another report of ARIC study, suggesting that higher DBP (OR [95% CI] per 1-SD increase, 1.84 [1.04–3.24]), but not SBP (1.46 [0.90–2.39]), was associated with incident retinopathy for 10 years in participants without diabetes.⁴⁶

Potential mechanisms underlying the observed BP components differences may be as follows: DBP reflects a steady-state load of BP, and SBP is an integrated measure of steady and pulsatile pressure load.^{23,25,47} The impact of both SBP and DBP on CRVE suggests that both increased steady-state load and pulsatile pressure load on vascular structures are important contributors to retinal venules narrowing. By contrast, DBP, but not SBP, was associated with smaller CRAE and AVR, suggesting that higher steady flow instead of pulsatile components of BP contributes to retinal arterioles narrowing. Our study underscores the importance of assessment and management of DBP through early stages of life to prevent and/or delay the progression of microvasculature abnormalities in later stages of life. Further investigations

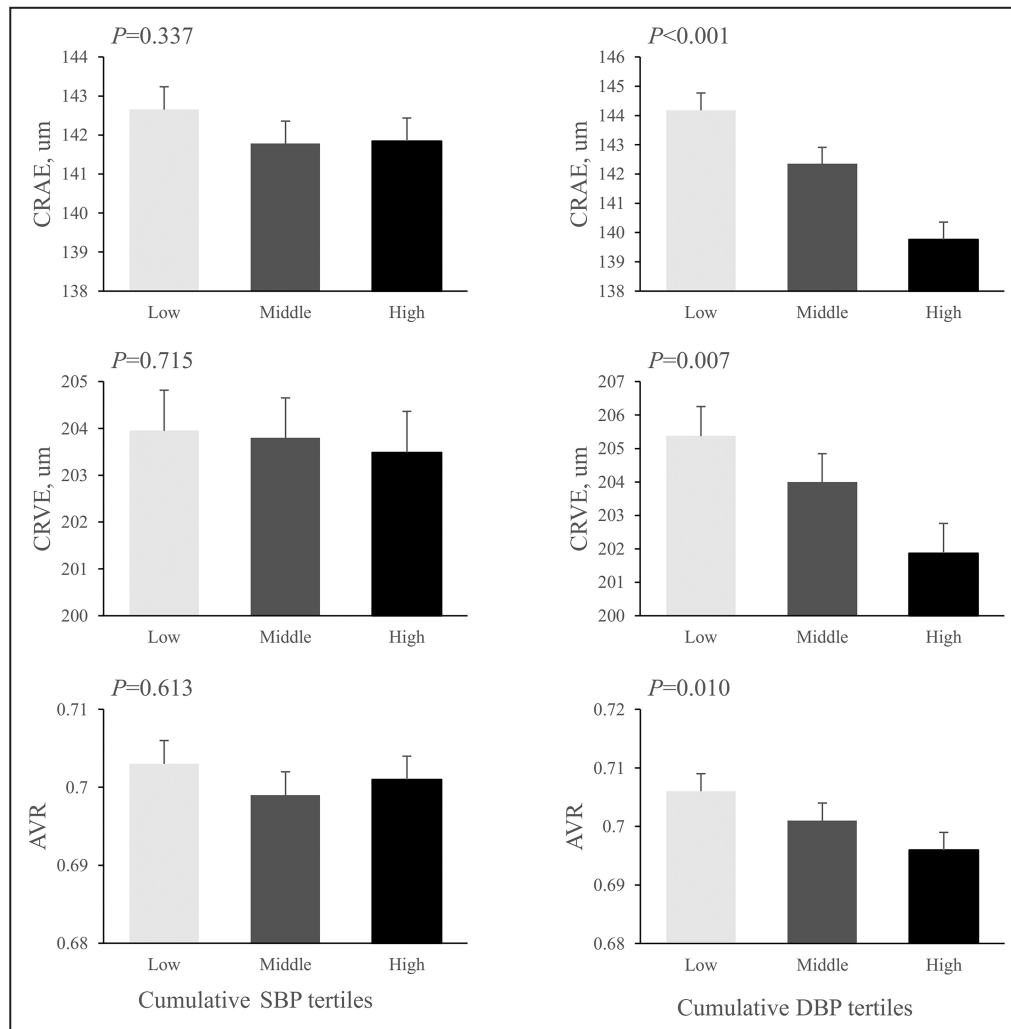


Figure 1. Retinal phenotypes in tertiles of time-averaged cumulative blood pressure.

Bars represent means (SEs) calculated from ANCOVA after adjustment for age, race, sex, body mass index, and visit center at visit 5. *P* values show *P* for trends from ANCOVA. AVR indicates arteriolar:venular ratio; CRAE, central retinal arteriolar equivalent; CRVE, central retinal venular equivalent; DBP, diastolic blood pressure; and SBP, systolic blood pressure.

may help to clarify the mechanisms underlying our observations.

Racial Differences in Cumulative BP Exposure and Microvasculature

Harris et al⁴⁸ found that the effect of BP on risk of retinopathy differed between Black people and White people. The risk of retinopathy increased as BP increased among Black people, but did not reach statistical significance among White people. By contrast, data from the CARDIA (Coronary Artery Risk Development in Young Adults) study²⁴ suggested that DBP at baseline was associated with CVD risk in White people, but was unrelated to CVD risk in Black people. In our study, we observed a stronger association between BP and retinal venules in Black people than in White people, whereas

the effect of DBP on retinal arterioles is more obvious in White people than in Black people. One potential mechanism may explain the observed racial differences. The diurnal pattern of BP differed between Black people and White people, and Black people showed less of a decline in BP during sleep than White people.^{49,50} As a result, the importance of BP as a risk factor may differ between Black people and White people. Based on our study data, we hypothesized that retinal arteriolar and venular calibers were differentially associated with cardiovascular risk factors, such as race and high BP. This hypothesis was further supported by several previous studies.^{51–53} The major systemic determinant of arteriolar diameters was BP,^{51,52} whereas the venular calibers were also correlated with cigarette smoking, obesity,⁵¹ and systemic inflammation.^{51,53} Our study underscores the importance of more highly targeted interventions.

Table 3. Relationships of Cumulative Exposure to Blood Pressure for 25 Years or Visit 1 or Visit 5 Blood Pressure With Retinal Phenotypes

Blood pressure per 1 SD higher	CRAE, μm		CRVE, μm		AVR	
	β (SE)	P value	β (SE)	P value	β (SE)	P value
Cumulative SBP	-0.52 (0.40)	0.189	-1.11 (0.59)	0.059	0.001 (0.002)	0.485
Visit 1 SBP	-0.11 (0.38)	0.772	-0.03 (0.56)	0.957	-0.0003 (0.002)	0.880
Visit 5 SBP	-0.58 (0.37)	0.111	-1.74 (0.54)	0.001	0.003 (0.002)	0.078
Cumulative DBP	-1.78 (0.38)	<0.001	-1.17 (0.57)	0.040	-0.005 (0.002)	0.004
Visit 1 DBP	-0.97 (0.38)	0.011	-0.33 (0.56)	0.558	-0.004 (0.002)	0.030
Visit 5 DBP	-1.38 (0.36)	<0.001	-1.72 (0.53)	0.001	-0.001 (0.002)	0.416

Analyses were adjusted for age, sex, race, body mass index, visit center, smoking status, drinking status, triglycerides, low-density lipoprotein, high-density lipoprotein, prevalence of diabetes, prevalence of hypertension, and antihypertensive medication at visit 5. β represents unstandardized regression coefficient. One SD was 13, 16, and 18 mmHg, respectively, for time-averaged cumulative SBP, visit 1 SBP, and visit 5 SBP and was 7, 10, and 11 mmHg, respectively, for time-averaged cumulative DBP, visit 1 DBP, and visit 5 DBP. AVR indicates arteriole:venule ratio; CRAE, central retinal arteriolar equivalent; CRVE, central retinal venular equivalent; DBP, diastolic blood pressure; and SBP, systolic blood pressure.

For Black adults, both SBP and DBP could potentially serve as a marker of retinal venules narrowing. For White adults, DBP from midlife to late life is more related to retinal arterioles narrowing than SBP and could serve as a potential target for future therapies.

Limitations

There are limitations of the current study to consider. First, only 29% of our sample had gradable retinal photography and were included in the analyses. This could have introduced selection bias. However,

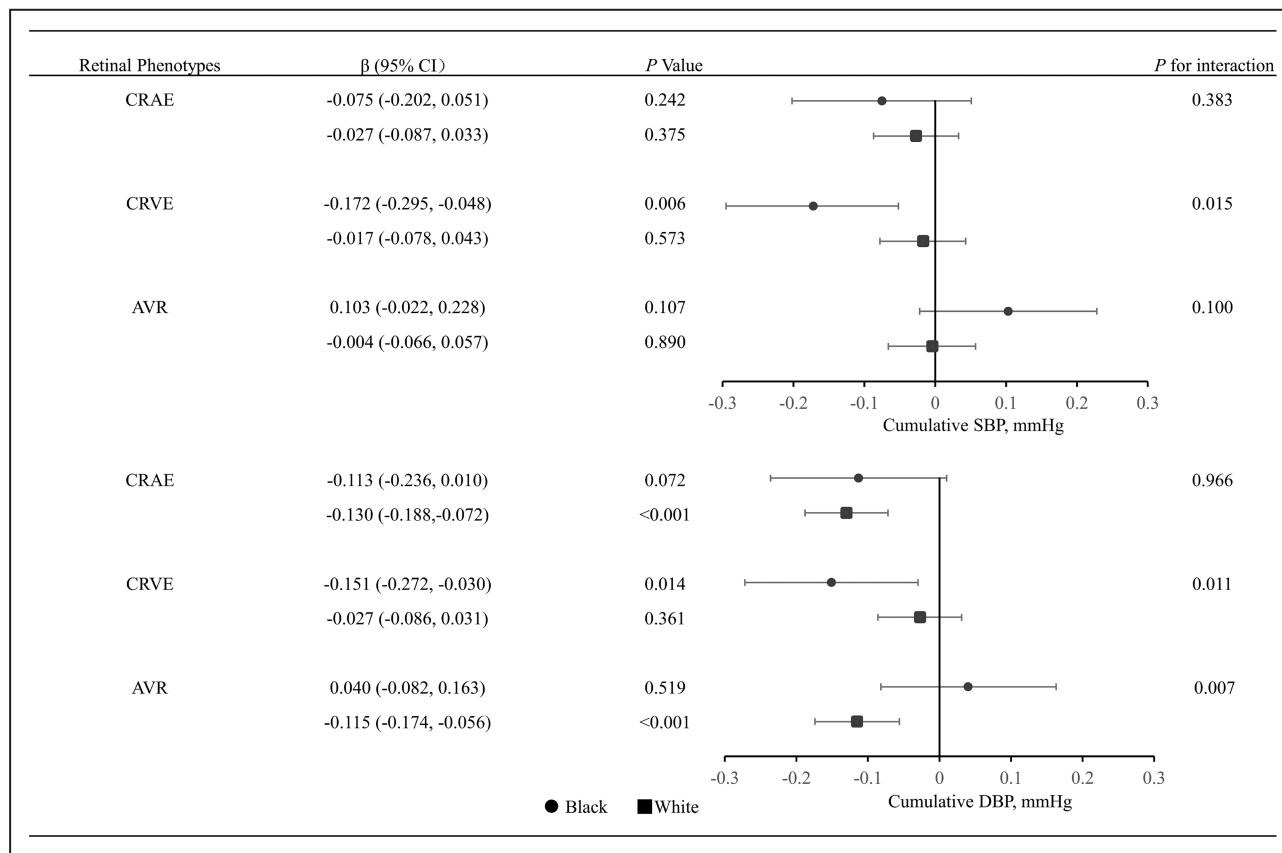


Figure 2. Association between cumulative blood pressure for 25 years with retinal phenotypes stratified by race.

The β represents unstandardized regression coefficient. Retinal phenotypes were transformed to z scores. All analyses were adjusted for age, sex, race, body mass index, visit center, smoking status, drinking status, triglycerides, low-density lipoprotein, high-density lipoprotein, prevalence of diabetes, prevalence of hypertension, and antihypertensive medication at visit 5. AVR indicates arteriole:venule ratio; CRAE, central retinal arteriolar equivalent; CRVE, central retinal venular equivalent; DBP, diastolic blood pressure; and SBP, systolic blood pressure.

participants analyzed and not analyzed had similar baseline characteristics, suggesting that this bias is likely nondifferential and would only attenuate our findings. Second, the results may not be generalizable to individuals from other race or ethnicity cohorts because the ARIC study only consisted of a population of Black and White participants. Although only 17% of our study were Black participants, we still found a stronger association between BP and CRVE in Black participants than in White participants, which only means that our results of interaction between BP and race are robust. Finally, follow-up time between visits in the ARIC study is different, and the time interval between visits 4 and 5 is wider versus visits 1, 2, 3, and 4. However, time-averaged cumulative BP was calculated as previous study described²² so that BP measured at visits 4 and 5 would not give more weight to the cumulative BP exposure than BP at earlier visits.

CONCLUSIONS

Higher time-averaged cumulative BP for 25 years from midlife to late life was independently associated with narrower microvasculature in late life. Of note, cumulative DBP load, rather than SBP, played a role in determining the risk of retinal arteriolar narrowing. Furthermore, the effect of BP on the risk of microvasculature narrowing differed between Black adults and White adults. The findings suggest that decreased retinal vessel diameters in late life may result from the cumulative effects of elevated BP, particularly DBP, from midlife to late life and underscore the need for targeted interventions based on racial differences.

ARTICLE INFORMATION

Received January 5, 2022; accepted May 19, 2022.

Affiliations

Cardiology Department, The First Affiliated Hospital of Sun Yat-Sen University, Guangzhou, China; and National Health Commission (NHC) Key Laboratory of Assisted Circulation, Sun Yat-Sen University, Guangzhou, China.

Acknowledgments

We thank the staff and participants of the ARIC (Atherosclerosis Risk in Communities) study for their important contribution.

Sources of Funding

The ARIC (Atherosclerosis Risk in Communities) study is performed as a collaborative trial supported by National Heart, Lung, and Blood Institute contracts (HHSN268201100005C, HHSN268201100006C, HHSN268201100007C, HHSN268201100008C, HHSN268201100009C, HHSN268201100010C, HHSN268201100011C, and HHSN268201100012C). This study was supported by the National Natural Science Foundation of China (81600206 to Dr Zhuang, 81870195 to Dr Liao), and Natural Science Foundation of Guangdong Province (2016A030310140 to Dr Zhuang, 20160903 to Dr Liao). The funders had no role in study design, data collection and analysis, decision to publish, or preparation of the manuscript.

Disclosures

None.

Supplemental Material

Tables S1–S2

Figures S1–S5

REFERENCES

- Ding J, Wai KL, McGeechan K, Ikram MK, Kawasaki R, Xie J, Klein R, Klein BB, Cotch MF, Wang JJ, et al. Retinal vascular caliber and the development of hypertension: a meta-analysis of individual participant data. *J Hypertens*. 2014;32:207–215. doi: 10.1097/HJH.0b013e32836586f4
- Kawasaki R, Cheung N, Wang JJ, Klein R, Klein BE, Cotch MF, Sharrett AR, Shea S, Islam FA, Wong TY. Retinal vessel diameters and risk of hypertension: the Multiethnic Study of Atherosclerosis. *J Hypertens*. 2009;27:2386–2393. doi: 10.1097/HJH.0b013e3283310f7e
- Wong TY, Shankar A, Klein R, Klein BE, Hubbard LD. Prospective cohort study of retinal vessel diameters and risk of hypertension. *BMJ*. 2004;329:79. doi: 10.1136/bmj.38124.682523.55
- Doubal FN, MacGillivray TJ, Hokke PE, Dhillon B, Dennis MS, Wardlaw JM. Differences in retinal vessels support a distinct vasculopathy causing lacunar stroke. *Neurology*. 2009;72:1773–1778. doi: 10.1212/WNL.0b013e3181a60a71
- Ikram MK, de Jong FJ, Bos MJ, Vingerling JR, Hofman A, Koudstaal PJ, de Jong PT, Breteler MM. Retinal vessel diameters and risk of stroke: the Rotterdam Study. *Neurology*. 2006;66:1339–1343. doi: 10.1212/01.wnl.0000210533.24338.ea
- Dumitrascu OM, Demaerschalk BM, Valencia Sanchez C, Almader-Douglas D, O'Carroll CB, Aguilar ML, Lyden PD, Kumar G. Retinal microvascular abnormalities as surrogate markers of cerebrovascular ischemic disease: a meta-analysis. *J Stroke Cerebrovasc Dis*. 2018;27:1960–1968. doi: 10.1016/j.jstrokecerebrovasdis.2018.02.041
- Wong TY, Klein R, Couper DJ, Cooper LS, Shahar E, Hubbard LD, Wofford MR, Sharrett AR. Retinal microvascular abnormalities and incident stroke: the Atherosclerosis Risk in Communities Study. *Lancet*. 2001;358:1134–1140. doi: 10.1016/S0140-6736(01)06253-5
- de Jong FJ, Schrijvers EM, Ikram MK, Koudstaal PJ, de Jong PT, Hofman A, Vingerling JR, Breteler MM. Retinal vascular caliber and risk of dementia: the Rotterdam Study. *Neurology*. 2011;76:816–821. doi: 10.1212/WNL.0b013e31820e7baa
- Deal JA, Sharrett AR, Albert M, Bandeen-Roche K, Burgard S, Thomas SD, Gottesman RF, Knopman D, Mosley T, Klein B, et al. Retinal signs and risk of incident dementia in the Atherosclerosis Risk in Communities Study. *Alzheimers Dement*. 2019;15:477–486. doi: 10.1016/j.jalz.2018.10.002
- Wong TY, Klein R, Sharrett AR, Schmidt MI, Pankow JS, Couper DJ, Klein BE, Hubbard LD, Duncan BB. Retinal arteriolar narrowing and risk of diabetes mellitus in middle-aged persons. *JAMA*. 2002;287:2528–2533. doi: 10.1001/jama.287.19.2528
- Yang C, Kwak L, Ballew SH, Jaar BG, Deal JA, Folsom AR, Heiss G, Sharrett AR, Selvin E, Sabanayagam C, et al. Retinal microvascular findings and risk of incident peripheral artery disease: an analysis from the Atherosclerosis Risk in Communities (ARIC) Study. *Atherosclerosis*. 2020;294:62–71. doi: 10.1016/j.atherosclerosis.2019.10.012
- Seidelmann SB, Claggett B, Bravo PE, Gupta A, Farhad H, Klein BE, Klein R, Di Carli M, Solomon SD. Retinal vessel calibers in predicting long-term cardiovascular outcomes: the Atherosclerosis Risk in Communities Study. *Circulation*. 2016;134:1328–1338. doi: 10.1161/CIRCULATIONAHA.116.023425
- Wong TY, Mitchell P. The eye in hypertension. *Lancet*. 2007;369:425–435. doi: 10.1016/S0140-6736(07)60198-6
- Wong TY, Mitchell P. Hypertensive retinopathy. *N Engl J Med*. 2004;351:2310–2317. doi: 10.1056/NEJMra032865
- Sharrett AR, Hubbard LD, Cooper LS, Sorlie PD, Brothers RJ, Nieto FJ, Pinsky JL, Klein R. Retinal arteriolar diameters and elevated blood pressure: the Atherosclerosis Risk in Communities Study. *Am J Epidemiol*. 1999;150:263–270. doi: 10.1093/oxfordjournals.aje.a009997
- Wei FF, Zhang ZY, Thijs L, Yang WY, Jacobs L, Cauwenberghs N, Gu YM, Kuznetsova T, Allegaert K, Verhamme P, et al. Conventional and ambulatory blood pressure as predictors of retinal

- arteriolar narrowing. *Hypertension*. 2016;68:511–520. doi: [10.1161/HYPERTENSIONAHA.116.07523](https://doi.org/10.1161/HYPERTENSIONAHA.116.07523)
17. Wong TY, Hubbard LD, Klein R, Marino EK, Kronmal R, Sharrett AR, Siscovick DS, Burke G, Tielsch JM. Retinal microvascular abnormalities and blood pressure in older people: the Cardiovascular Health Study. *Br J Ophthalmol*. 2002;86:1007–1013. doi: [10.1136/bjo.86.9.1007](https://doi.org/10.1136/bjo.86.9.1007)
 18. Kishi S, Teixido-Tura G, Ning H, Venkatesh BA, Wu C, Almeida A, Choi EY, Gjesdal O, Jacobs DR Jr, Schreiner PJ, et al. Cumulative blood pressure in early adulthood and cardiac dysfunction in middle age: the CARDIA study. *J Am Coll Cardiol*. 2015;65:2679–2687. doi: [10.1016/j.jacc.2015.04.042](https://doi.org/10.1016/j.jacc.2015.04.042)
 19. Vasconcellos HD, Moreira HT, Ciuffo L, Nwabuo CC, Yared GS, Ambale-Venkatesh B, Armstrong AC, Kishi S, Reis JP, Liu K, et al. Cumulative blood pressure from early adulthood to middle age is associated with left atrial remodelling and subclinical dysfunction assessed by three-dimensional echocardiography: a prospective post hoc analysis from the coronary artery risk development in young adults study. *Eur Heart J Cardiovasc Imaging*. 2018;19:977–984. doi: [10.1093/ehjci/ey086](https://doi.org/10.1093/ehjci/ey086)
 20. Zemaitis P, Liu K, Jacobs DR Jr, Cushman M, Durazo-Arvizu R, Shoham D, Palmas W, Cooper R, Kramer H. Cumulative systolic BP and changes in urine albumin-to-creatinine ratios in nondiabetic participants of the Multi-Ethnic Study of Atherosclerosis. *Clin J Am Soc Nephrol*. 2014;9:1922–1929. doi: [10.2215/CJN.02450314](https://doi.org/10.2215/CJN.02450314)
 21. Nwabuo CC, Appiah D, Moreira HT, Vasconcellos HD, Yano Y, Reis JP, Shah RV, Murthy VL, Allen NB, Sidney S, et al. Long-term cumulative blood pressure in young adults and incident heart failure, coronary heart disease, stroke, and cardiovascular disease: the CARDIA study. *Eur J Prev Cardiol*. 2021;28:1445–1451. doi: [10.1177/2047487320915342](https://doi.org/10.1177/2047487320915342)
 22. Teramoto K, Nadruz Junior W, Matsushita K, Claggett B, John JE, Skali H, Solomon S, Cheng S, Shah AM. Mid- to late-life time-averaged cumulative blood pressure and late-life cardiac structure, function, and heart failure. *Hypertension*. 2020;76:808–818. doi: [10.1161/HYPERTENSIONAHA.120.14833](https://doi.org/10.1161/HYPERTENSIONAHA.120.14833)
 23. Cecelja M, Keehn L, Ye L, Spector TD, Hughes AD, Chowienczyk P. Genetic aetiology of blood pressure relates to aortic stiffness with bi-directional causality: evidence from heritability, blood pressure polymorphisms, and Mendelian randomization. *Eur Heart J*. 2020;41:3314–3322. doi: [10.1093/eurheartj/ehaa238](https://doi.org/10.1093/eurheartj/ehaa238)
 24. Yano Y, Reis JP, Tedla YG, Goff DC Jr, Jacobs DR Jr, Sidney S, Ning H, Liu K, Greenland P, Lloyd-Jones DM. Racial differences in associations of blood pressure components in young adulthood with incident cardiovascular disease by middle age: Coronary Artery Risk Development in Young Adults (CARDIA) study. *JAMA Cardiol*. 2017;2:381–389. doi: [10.1001/jamacardio.2016.5678](https://doi.org/10.1001/jamacardio.2016.5678)
 25. Vlachopoulos C, O'Rourke M. Diastolic pressure, systolic pressure, or pulse pressure? *Curr Hypertens Rep*. 2000;2:271–279. doi: [10.1007/s11906-000-0010-6](https://doi.org/10.1007/s11906-000-0010-6)
 26. Safar ME. Arterial aging—hemodynamic changes and therapeutic options. *Nat Rev Cardiol*. 2010;7:442–449. doi: [10.1038/nrcardio.2010.96](https://doi.org/10.1038/nrcardio.2010.96)
 27. Wong TY, Islam FM, Klein R, Klein BE, Cotch MF, Castro C, Sharrett AR, Shahar E. Retinal vascular caliber, cardiovascular risk factors, and inflammation: the Multi-Ethnic Study of Atherosclerosis (MESA). *Invest Ophthalmol Vis Sci*. 2006;47:2341–2350. doi: [10.1167/iovs.05-1539](https://doi.org/10.1167/iovs.05-1539)
 28. Flack JM, Sica DA, Bakris G, Brown AL, Ferdinand KC, Grimm RH Jr, Hall WD, Jones WE, Kountz DS, Lea JP, et al. Management of high blood pressure in Blacks: an update of the International Society on Hypertension in Blacks consensus statement. *Hypertension*. 2010;56:780–800. doi: [10.1161/HYPERTENSIONAHA.110.152892](https://doi.org/10.1161/HYPERTENSIONAHA.110.152892)
 29. Mahal S, Strain WD, Martinez-Perez ME, Thom SA, Chaturvedi N, Hughes AD. Comparison of the retinal microvasculature in European and African-Caribbean people with diabetes. *Clin Sci (Lond)*. 2009;117:229–236. doi: [10.1042/CS20080538](https://doi.org/10.1042/CS20080538)
 30. Howard G, Lackland DT, Kleindorfer DO, Kissela BM, Moy CS, Judd SE, Safford MM, Cushman M, Glasser SP, Howard VJ. Racial differences in the impact of elevated systolic blood pressure on stroke risk. *JAMA Intern Med*. 2013;173:46–51. doi: [10.1001/2013.jamainternmed.857](https://doi.org/10.1001/2013.jamainternmed.857)
 31. Saad MF, Lillioja S, Nyomba BL, Castillo C, Ferraro R, De Gregorio M, Ravussin E, Knowler WC, Bennett PH, Howard BV, et al. Racial differences in the relation between blood pressure and insulin resistance. *N Engl J Med*. 1991;324:733–739. doi: [10.1056/NEJM199103143241105](https://doi.org/10.1056/NEJM199103143241105)
 32. Levine DA, Galecki AT, Langa KM, Unverzagt FW, Kabeto MU, Giordani B, Cushman M, McClure LA, Safford MM, Wadley VG. Blood pressure and cognitive decline over 8 years in middle-aged and older black and white Americans. *Hypertension*. 2019;73:310–318. doi: [10.1161/HYPERTENSIONAHA.118.12062](https://doi.org/10.1161/HYPERTENSIONAHA.118.12062)
 33. The Atherosclerosis Risk in Communities (ARIC) study: design and objectives. The ARIC Investigators. *Am J Epidemiol*. 1989;129:687–702. doi: [10.1093/oxfordjournals.aje.a115184](https://doi.org/10.1093/oxfordjournals.aje.a115184)
 34. Hubbard LD, Brothers RJ, King WN, Clegg LX, Klein R, Cooper LS, Sharrett AR, Davis MD, Cai J. Methods for evaluation of retinal microvascular abnormalities associated with hypertension/sclerosis in the Atherosclerosis Risk in Communities Study. *Ophthalmology*. 1999;106:2269–2280. doi: [10.1016/S0161-6420\(99\)90525-0](https://doi.org/10.1016/S0161-6420(99)90525-0)
 35. Couper DJ, Klein R, Hubbard LD, Wong TY, Sorlie PD, Cooper LS, Brothers RJ, Nieto FJ. Reliability of retinal photography in the assessment of retinal microvascular characteristics: the Atherosclerosis Risk in Communities Study. *Am J Ophthalmol*. 2002;133:78–88. doi: [10.1016/S0002-9394\(01\)01315-0](https://doi.org/10.1016/S0002-9394(01)01315-0)
 36. Parr JC, Spears GF. Mathematic relationships between the width of a retinal artery and the widths of its branches. *Am J Ophthalmol*. 1974;77:478–483. doi: [10.1016/0002-9394\(74\)90458-9](https://doi.org/10.1016/0002-9394(74)90458-9)
 37. Parr JC, Spears GF. General caliber of the retinal arteries expressed as the equivalent width of the central retinal artery. *Am J Ophthalmol*. 1974;77:472–477. doi: [10.1016/0002-9394\(74\)90457-7](https://doi.org/10.1016/0002-9394(74)90457-7)
 38. Meyer ML, Klein BE, Klein R, Palta P, Sharrett AR, Heiss G, Nambi V, Wong TY, Tanaka H. Central arterial stiffness and retinal vessel calibers: the Atherosclerosis Risk in Communities Study-Neurocognitive Study. *J Hypertens*. 2020;38:266–273. doi: [10.1097/HJH.0000000000002252](https://doi.org/10.1097/HJH.0000000000002252)
 39. Lu Y, Tang O, Brady TM, Miller ER III, Heiss G, Appel LJ, Matsushita K. Simplified blood pressure measurement approaches and implications for hypertension screening: the Atherosclerosis Risk in Communities Study. *J Hypertens*. 2021;39:447–452. doi: [10.1097/HJH.0000000000002682](https://doi.org/10.1097/HJH.0000000000002682)
 40. Hayes AF, Rockwood NJ. Regression-based statistical mediation and moderation analysis in clinical research: observations, recommendations, and implementation. *Behav Res Ther*. 2017;98:39–57. doi: [10.1016/j.brat.2016.11.001](https://doi.org/10.1016/j.brat.2016.11.001)
 41. Wang JJ, Mitchell P, Leung H, Rochtchina E, Wong TY, Klein R. Hypertensive retinal vessel wall signs in a general older population: the Blue Mountains Eye Study. *Hypertension*. 2003;42:534–541. doi: [10.1161/01.HYP.0000090122.38230.41](https://doi.org/10.1161/01.HYP.0000090122.38230.41)
 42. Leung H, Wang JJ, Rochtchina E, Wong TY, Klein R, Mitchell P. Impact of current and past blood pressure on retinal arteriolar diameter in an older population. *J Hypertens*. 2004;22:1543–1549. doi: [10.1097/01.hjh.0000125455.28861.3f](https://doi.org/10.1097/01.hjh.0000125455.28861.3f)
 43. Cheng S, Gupta DK, Claggett B, Sharrett AR, Shah AM, Skali H, Takeuchi M, Ni H, Solomon SD. Differential influence of distinct components of increased blood pressure on cardiovascular outcomes: from the Atherosclerosis Risk in Communities Study. *Hypertension*. 2013;62:492–498. doi: [10.1161/HYPERTENSIONAHA.113.01561](https://doi.org/10.1161/HYPERTENSIONAHA.113.01561)
 44. Franklin SS, Lopez VA, Wong ND, Mitchell GF, Larson MG, Vasan RS, Levy D. Single versus combined blood pressure components and risk for cardiovascular disease: the Framingham Heart Study. *Circulation*. 2009;119:243–250. doi: [10.1161/CIRCULATIONAHA.108.797936](https://doi.org/10.1161/CIRCULATIONAHA.108.797936)
 45. Schillaci G, Pirro M, Mannarino E. Assessing cardiovascular risk: should we discard diastolic blood pressure? *Circulation*. 2009;119:210–212. doi: [10.1161/CIRCULATIONAHA.108.827931](https://doi.org/10.1161/CIRCULATIONAHA.108.827931)
 46. Liew G, Campbell S, Klein R, Klein BE, Sharrett AR, Cotch MF, Wang JJ, Wong TY. Ten-year longitudinal changes in retinal microvascular lesions: the Atherosclerosis Risk in Communities Study. *Ophthalmology*. 2011;118:1612–1618. doi: [10.1016/j.ophtha.2011.01.003](https://doi.org/10.1016/j.ophtha.2011.01.003)
 47. Franklin SS, Wt G, Wong ND, Larson MG, Weber MA, Kannel WB, Levy D. Hemodynamic patterns of age-related changes in blood pressure: The Framingham Heart Study. *Circulation*. 1997;96:308–315. doi: [10.1161/01.CIR.96.1.308](https://doi.org/10.1161/01.CIR.96.1.308)
 48. Harris EL, Feldman S, Robinson CR, Sherman S, Georgopoulos A. Racial differences in the relationship between blood pressure and risk of retinopathy among individuals with NIDDM. *Diabetes Care*. 1993;16:748–754. doi: [10.2337/diacare.16.5.748](https://doi.org/10.2337/diacare.16.5.748)
 49. Harshfield GA, Dupaul LM, Alpert BS, Christman JV, Willey ES, Murphy JK, Somes GW. Aerobic fitness and the diurnal rhythm of blood pressure in adolescents. *Hypertension*. 1990;15:810–814. doi: [10.1161/01.HYP.15.6.810](https://doi.org/10.1161/01.HYP.15.6.810)
 50. Harshfield GA, Hwang C, Grim CE. Circadian variation of blood pressure in blacks: influence of age, gender and activity. *J Hum Hypertens*. 1990;4:43–47.

-
51. Liew G, Sharrett AR, Wang JJ, Klein R, Klein BE, Mitchell P, Wong TY. Relative importance of systemic determinants of retinal arteriolar and venular caliber: the Atherosclerosis Risk in Communities Study. *Arch Ophthalmol*. 2008;126:1404–1410. doi: [10.1001/archophth.126.10.1404](https://doi.org/10.1001/archophth.126.10.1404)
 52. Ikram MK, de Jong FJ, Vingerling JR, Witteman JC, Hofman A, Breteler MM, de Jong PT. Are retinal arteriolar or venular diameters associated with markers for cardiovascular disorders? The Rotterdam Study. *Invest Ophthalmol Vis Sci*. 2004;45:2129–2134. doi: [10.1167/iovs.03-1390](https://doi.org/10.1167/iovs.03-1390)
 53. Klein R, Klein BE, Knudtson MD, Wong TY, Tsai MY. Are inflammatory factors related to retinal vessel caliber? The Beaver Dam Eye Study. *Arch Ophthalmol*. 2006;124:87–94. doi: [10.1001/archophth.124.1.87](https://doi.org/10.1001/archophth.124.1.87)

SUPPLEMENTAL MATERIAL

Table S1. Comparison of people included and excluded at visit 5 (2011-2013).

Characteristics	Included in analyses (n=1818)	Excluded from analyses (n=4720)	<i>P</i> -value
Age, y	76.7 (5.2)	75.4 (5.2)	<0.001
Female (%)	56.1	58.4	0.047
Black (%)	17.1	21.9	<0.001
BMI (kg/m ²)	28.4 (5.6)	28.9 (5.8)	0.003
Current smoking	4.5%	6.2%	<0.001
Current drinking	50.2	50.7	0.075
SBP (mmHg)	129.9 (18.0)	130.6 (18.5)	0.155
DBP (mmHg)	65.2 (10.5)	66.7 (10.9)	<0.001
Triglycerides (mg/dl)	1.4 (0.6)	1.4 (0.8)	0.095
LDL (mg/dl)	2.7 (0.9)	2.7 (0.9)	0.067
HDL (mg/dl)	1.3 (0.4)	1.3 (0.4)	0.796
TC (mg/dl)	4.6 (1.1)	4.7 (1.1)	0.086
FBG (mmol/l)	6.3 (1.5)	6.3 (1.6)	0.234
Diabetes (%)	29.8	29.9	0.910
Hypertension (%)	74.3	74.1	0.878

Continuous variables are presented as mean (SD). *P* values were calculated by unpaired *t* test or χ^2 test. Abbreviations: SD, standard deviation; SBP, systolic blood pressure; DBP, diastolic blood pressure; LDL, low-density lipoprotein; HDL, high-density lipoprotein; TC, total cholesterol; FBG, fasting blood glucose.

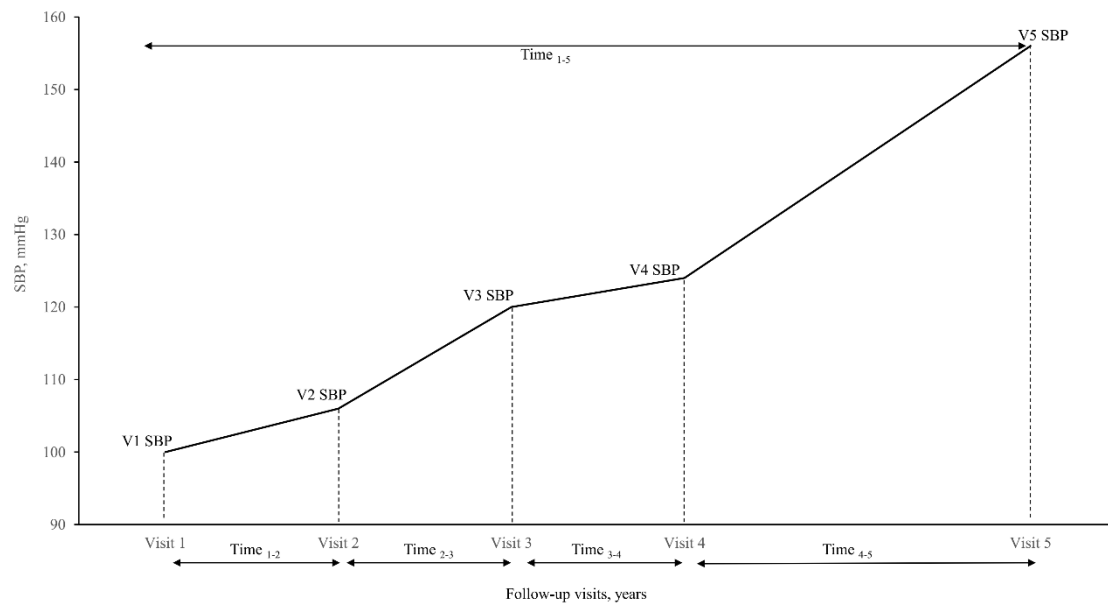
Table S2. Relationship of time-averaged cumulative blood pressure with generalized arteriolar narrowing defined as narrowest quintile of CRAE.

	Generalized arteriolar narrowing			Generalized arteriolar narrowing	
	Adjusted OR (95% CI)	<i>P</i>		Adjusted OR (95% CI)	<i>P</i>
Cumulative SBP			Cumulative DBP		
Lowest quintile	1.00 (reference)	-	Lowest quintile	1.00 (reference)	-
Second quintile	1.26 (0.84, 1.87)	0.268	Second quintile	1.40 (0.94, 2.10)	0.102
Third quintile	1.74 (1.16, 2.61)	0.007	Third quintile	1.41 (0.94, 2.13)	0.096
Fourth quintile	1.39 (0.90, 2.14)	0.178	Fourth quintile	2.32 (1.54, 3.49)	<0.001
Highest quintile	1.24 (0.79, 1.96)	0.383	Highest quintile	1.97 (1.27, 3.05)	0.002
<i>P</i> for trend		0.399	<i>P</i> for trend		<0.001
Per 1 SD	1.06 (0.92, 1.22)	0.443	Per 1 SD	1.25 (1.09, 1.43)	0.001

Analyses were adjusted for age, sex, race, body mass index, visit center, smoking status, drinking status, triglycerides, low-density lipoprotein, high-density lipoprotein, prevalence of diabetes, prevalence of hypertension, and antihypertensive medication at visit 5.

Abbreviations: SD, standard deviation; SBP, systolic blood pressure; DBP, diastolic blood pressure; CRAE, central retinal arteriolar equivalent.

Figure S1. Definition of time-averaged cumulative systolic blood pressure (SBP).



Time-averaged cumulative SBP over the 5 study visits was area under the curve index to total expose time (time 1-5)

Examples:

One patient's SBP was 100mmHg, 106mmHg,120mmHg,124mmHg, and 156mmHg, respectively, from visit1 to visit5 (Y₁₉₈₇, Y₁₉₉₀, Y₁₉₉₃, Y₁₉₉₆, Y₂₀₁₁)

$$\text{Time-averaged cumulative SBP} = [3 \cdot (100 + 106)/2 + 3 \cdot (106 + 120)/2 + 3 \cdot (120 + 124)/2 + 15 \cdot (124 + 156)/2] \div 24 = 129.8 \text{ mmHg}$$

Figure S2. Unadjusted mean systolic blood pressure (SBP), and diastolic blood pressure (DBP) values with increasing age for whites and blacks.

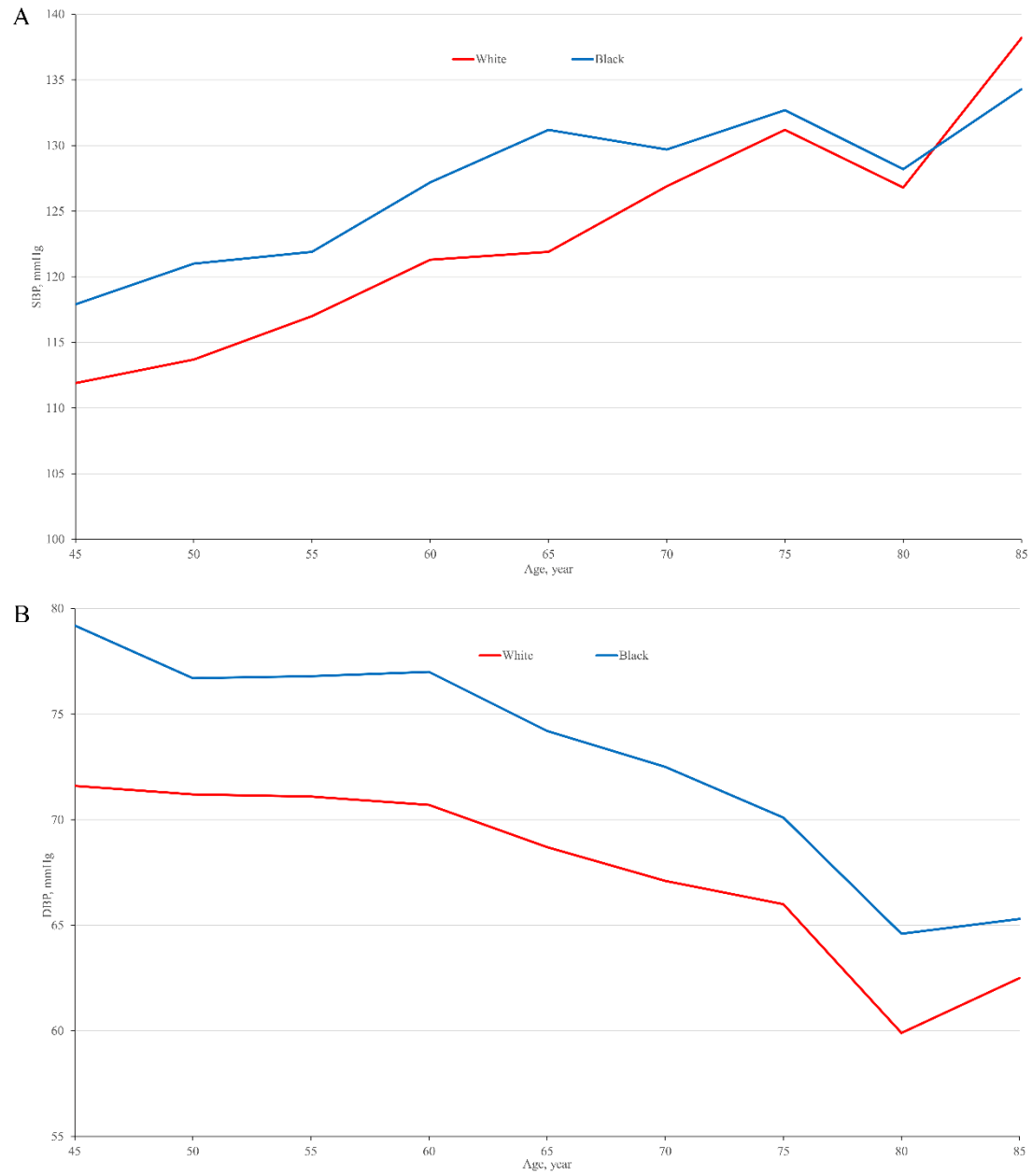


Figure S3. Relationship between time-averaged cumulative blood pressure and CRVE, stratified by race. Model was unadjusted and 95% confidence interval was displayed by dashed lines. Abbreviation: CRVE, central retinal venular equivalent; SBP, systolic blood pressure; DBP, diastolic blood pressure.

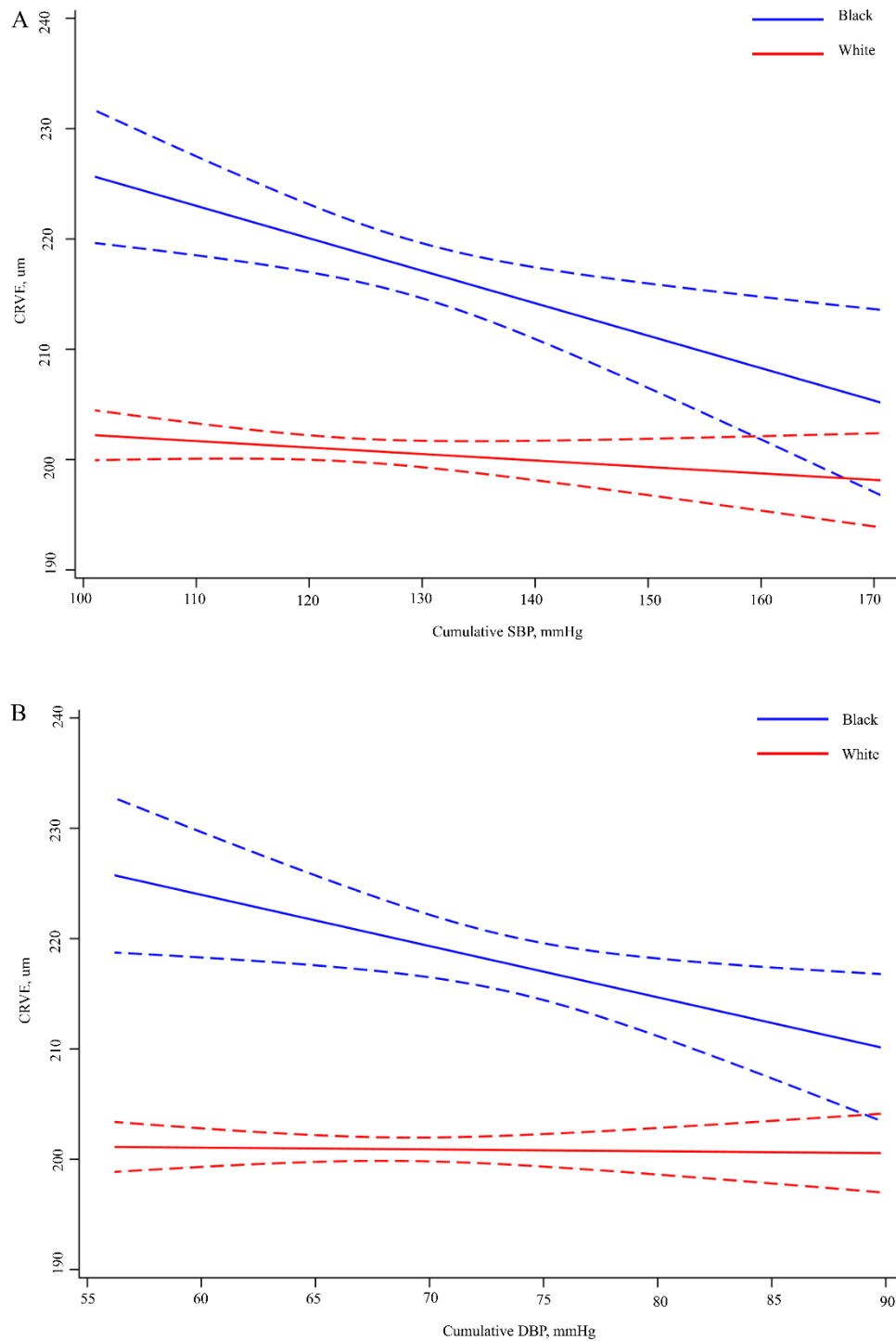


Figure S4. Association between cumulative blood pressure over 25 years with retinal phenotypes, stratified by diabetes. The β represents unstandardized regression coefficients. Retinal phenotypes were transformed to z-scores. All analyses were adjusted for age, sex, race, body mass index, visit center, smoking status, drinking status, triglycerides, low-density lipoprotein, high-density lipoprotein, prevalence of diabetes, prevalence of hypertension, and antihypertensive medication at visit 5. Abbreviations: SBP, systolic blood pressure; DBP, diastolic blood pressure; CRAE, central retinal arteriolar equivalent; CRVE, central retinal venular equivalent; AVR, arteriole: venule ratio.

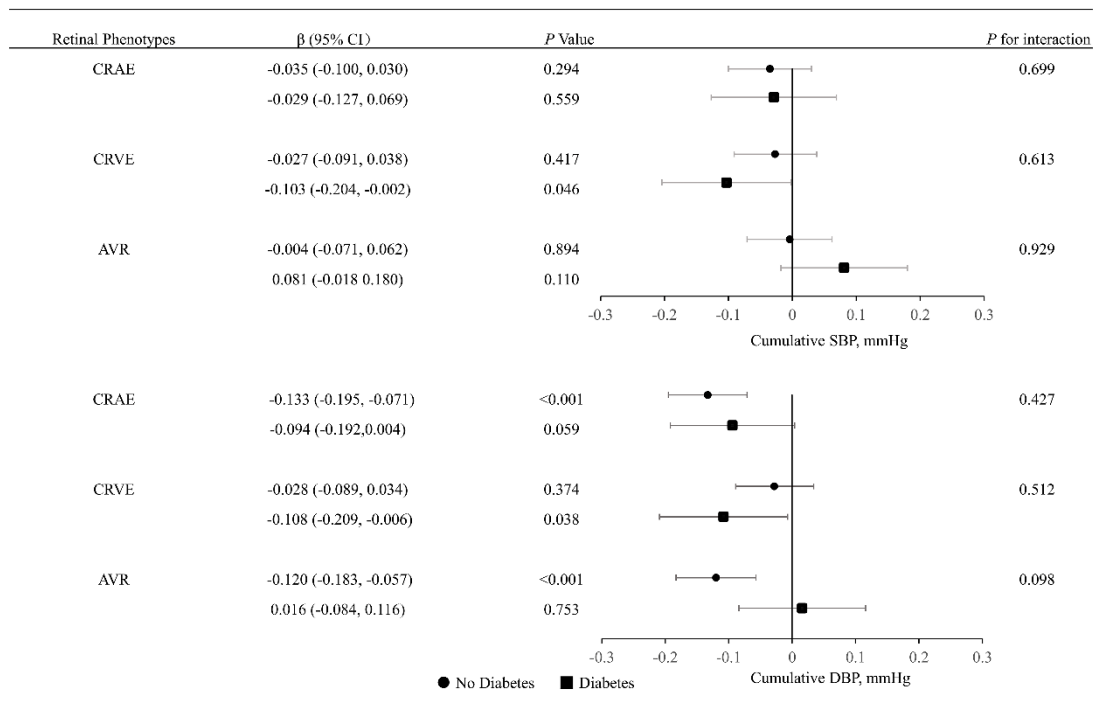


Figure S5. Association between cumulative blood pressure over 25 years with retinal phenotypes, stratified by hypertension. The β represents unstandardized regression coefficients. Retinal phenotypes were transformed to z-scores. All analyses were adjusted for age, sex, race, body mass index, visit center, smoking status, drinking status, triglycerides, low-density lipoprotein, high-density lipoprotein, prevalence of diabetes, prevalence of hypertension, and antihypertensive medication at visit 5. Abbreviations: SBP, systolic blood pressure; DBP, diastolic blood pressure; CRAE, central retinal arteriolar equivalent; CRVE, central retinal venular equivalent; AVR, arteriole: venule ratio.

