



Nivolumab plus rucaparib for metastatic castration-resistant prostate cancer: results from the phase 2 CheckMate 9KD trial

Karim Fizazi ,¹ Margitta Retz,² Daniel P Petrylak,³ Jeffrey C Goh,^{4,5} Jose Perez-Gracia,⁶ Louis Lacombe,⁷ Stefanie Zschäbitz,⁸ Mauricio Burotto,⁹ Hakim Mahammedi,¹⁰ Gwenaëlle Gravis,¹¹ Diogo Assed Bastos,¹² Steven L McCune,¹³ Juan Carlos Vázquez Limón,¹⁴ Edmond M Kwan,¹⁵ Daniel Castellano,¹⁶ Aude Fléchon,¹⁷ Fred Saad,¹⁸ Marc-Oliver Grimm,¹⁹ David R Shaffer,²⁰ Andrew J Armstrong,²¹ Prabhu Bhagavatheeswaran,²² Neha P Amin,²³ Keziban Ünsal-Kaçmaz,²⁴ Xuya Wang,²⁵ Jun Li,²⁵ Andrea Loehr,²⁶ Russell K Pachynski ²⁷

To cite: Fizazi K, Retz M, Petrylak DP, *et al*. Nivolumab plus rucaparib for metastatic castration-resistant prostate cancer: results from the phase 2 CheckMate 9KD trial. *Journal for ImmunoTherapy of Cancer* 2022;**10**:e004761. doi:10.1136/jitc-2022-004761

► Additional supplemental material is published online only. To view, please visit the journal online (<http://dx.doi.org/10.1136/jitc-2022-004761>).

Presented in part at the American Society of Clinical Oncology (ASCO) Annual Meeting (virtual), June 4–8, 2021 (cohort A1) and the European Society for Medical Oncology Congress 2021 (virtual), September 16–21, 2021 (cohort A2).

Accepted 15 June 2022



© Author(s) (or their employer(s)) 2022. Re-use permitted under CC BY-NC. No commercial re-use. See rights and permissions. Published by BMJ.

For numbered affiliations see end of article.

Correspondence to

Dr Karim Fizazi;
Karim.FIZAZI@gustaveroussy.fr

ABSTRACT

Background CheckMate 9KD (NCT03338790) is a non-randomized, multicohort, phase 2 trial of nivolumab plus other anticancer treatments for metastatic castration-resistant prostate cancer (mCRPC). We report results from cohorts A1 and A2 of CheckMate 9KD, specifically evaluating nivolumab plus rucaparib.

Methods CheckMate 9KD enrolled adult patients with histologically confirmed mCRPC, ongoing androgen deprivation therapy, and an Eastern Cooperative Oncology Group performance status of 0–1. Cohort A1 included patients with postchemotherapy mCRPC (1–2 prior taxane-based regimens) and ≤2 prior novel hormonal therapies (eg, abiraterone, enzalutamide, apalutamide); cohort A2 included patients with chemotherapy-naïve mCRPC and prior novel hormonal therapy. Patients received nivolumab 480 mg every 4 weeks plus rucaparib 600 mg two times per day (nivolumab dosing ≤2 years). Coprimary endpoints were objective response rate (ORR) per Prostate Cancer Clinical Trials Working Group 3 and prostate-specific antigen response rate (PSA₅₀-RR; ≥50% PSA reduction) in all-treated patients and patients with homologous recombination deficiency (HRD)-positive tumors, determined before enrollment. Secondary endpoints included radiographic progression-free survival (rPFS), overall survival (OS), and safety.

Results Outcomes (95% CI) among all-treated, HRD-positive, and *BRCA1/2*-positive populations for cohort A1 were confirmed ORR: 10.3% (3.9–21.2) (n=58), 17.2% (5.8–35.8) (n=29), and 33.3% (7.5–70.1) (n=9); confirmed PSA₅₀-RR: 11.9% (5.9–20.8) (n=84), 18.2% (8.2–32.7) (n=44), and 41.7% (15.2–72.3) (n=12); median rPFS: 4.9 (3.7–5.7) (n=88), 5.8 (3.7–8.4) (n=45), and 5.6 (2.8–15.7) (n=12) months; and median OS: 13.9 (10.4–15.8) (n=88), 15.4 (11.4–18.2) (n=45), and 15.2 (3.0–not estimable) (n=12) months. For cohort A2 they were confirmed ORR: 15.4% (5.9–30.5) (n=39), 25.0% (8.7–49.1) (n=20), and 33.3% (7.5–70.1) (n=9); confirmed PSA₅₀-RR: 27.3% (17.0–39.6) (n=66), 41.9% (24.5–60.9) (n=31), and 84.6% (54.6–98.1) (n=13); median rPFS: 8.1 (5.6–10.9) (n=71), 10.9 (6.7–12.0) (n=34), and 10.9 (5.6–12.0) (n=15) months; and median OS: 20.2

WHAT IS ALREADY KNOWN ON THIS TOPIC

⇒ Efficacy of single-agent immunotherapy for patients with metastatic castration-resistant prostate cancer (mCRPC) has been suboptimal, leading to the recent investigation of combination therapy approaches for this patient population.

WHAT THIS STUDY ADDS

⇒ Nivolumab plus rucaparib has clinical activity in patients with homologous recombination deficiency-positive mCRPC, particularly those harboring *BRCA1/2* mutations, with an acceptable safety profile.

HOW THIS STUDY MIGHT AFFECT RESEARCH, PRACTICE OR POLICY

⇒ These results contribute to our understanding of the efficacy and safety of combined PD-1/PD-L1 and poly(ADP-ribose) polymerase inhibition for postchemotherapy and chemotherapy-naïve mCRPC.

(14.1–22.8) (n=71), 22.7 (14.1–not estimable) (n=34), and 20.2 (11.1–not estimable) (n=15) months. In cohorts A1 and A2, respectively, the most common any-grade and grade 3–4 treatment-related adverse events (TRAEs) were nausea (40.9% and 40.8%) and anemia (20.5% and 14.1%). Discontinuation rates due to TRAEs were 27.3% and 23.9%, respectively.

Conclusions Nivolumab plus rucaparib is active in patients with HRD-positive postchemotherapy or chemotherapy-naïve mCRPC, particularly those harboring *BRCA1/2* mutations. Safety was as expected, with no new signals identified. Whether the addition of nivolumab incrementally improves outcomes versus rucaparib alone cannot be determined from this trial.

Trial registration number NCT03338790.

BACKGROUND

Over the past two decades, therapeutic advances have improved outcomes for

patients with metastatic castration-resistant prostate cancer (mCRPC), with the approval of various chemotherapies, hormonal therapies, poly(ADP-ribose) polymerase (PARP) inhibitors, and the immunotherapy sipuleucel-T.^{1–3} Despite the emergence of these treatment options, mCRPC remains an incurable, fatal malignancy; thus, additional therapeutic strategies continue to be evaluated.

One such strategy, investigated in several clinical trials, involves combining immune checkpoint inhibitors with other anticancer treatments that have the potential to stimulate an increasingly immune-responsive prostate cancer microenvironment, testing the hypothesis that the immunotherapeutic effects will be augmented and outcomes improved.^{4–7} This combination approach is necessary because treatment with single-agent immune checkpoint inhibitors targeting the anti-programmed death-1 (PD-1)/programmed death ligand 1 (PD-L1) pathway does not appear to elicit clinically impactful anti-tumor responses in unselected mCRPC populations.^{8–11} Although pivotal trials of ipilimumab (a cytotoxic T-lymphocyte antigen-4 checkpoint inhibitor) monotherapy originally failed to show improvements in overall survival (OS) versus placebo for unselected patients with mCRPC,^{12–13} an excess of long-term survivors versus placebo has since been reported in this clinical setting.¹⁴ Preliminary studies of nivolumab combined with ipilimumab have shown clinical activity in patients with mCRPC,^{15–16} supporting the concept of immunotherapy-based combinatorial strategies for this patient population.

PARP inhibitors have demonstrated encouraging clinical activity in patients with mCRPC who carry alterations in DNA damage repair genes, including those associated with homologous recombination deficiency (HRD),^{17–19} leading to regulatory approvals in Europe and the United States. For example, one such PARP inhibitor, rucaparib, has shown antitumor activity as monotherapy for post-chemotherapy mCRPC in the TRITON2 trial, with a reported objective response rate (ORR) per independent radiology review of 43.5% and a prostate-specific antigen (PSA) response rate of 54.8% among patients harboring deleterious *BRCA1* or *BRCA2* mutations.¹⁹ PARP inhibitors act by further limiting DNA damage repair in tumor cells that carry DNA damage repair mutations, resulting in tumor cell death; this produces tumor neoantigens and increases immunogenicity, thus promoting a more immune-responsive tumor microenvironment.^{20–21} Indeed, in preclinical studies across various tumor types, PARP inhibitors have been shown to synergize with PD-1/PD-L1 checkpoint blockade and potentiate antitumor efficacy.^{22–25} As such, there is a compelling therapeutic rationale for clinical investigations into the combination of immune checkpoint inhibitors and PARP inhibitors for patients with mCRPC.

Here, we report final analysis results from cohorts A1 and A2 of the multicohort, phase 2 CheckMate 9KD trial, which evaluated the efficacy and safety of the anti-PD-1 immune checkpoint inhibitor nivolumab combined with

rucaparib in men with either chemotherapy-naïve or postchemotherapy mCRPC.

METHODS

Study design and participants

CheckMate 9KD is a non-randomized, open-label, multicohort, phase 2 trial of nivolumab combined with rucaparib (cohorts A1 and A2), docetaxel (cohort B), or enzalutamide (cohort C) for mCRPC. Methods for the overall study and specific to cohort B have previously been described.²⁶ In brief, the CheckMate 9KD study population comprises adult patients (≥ 18 years of age) with histological confirmation of adenocarcinoma of the prostate with radiologic evidence of stage IV disease (N1 and/or M1), ongoing androgen deprivation therapy or bilateral orchiectomy (confirmed by testosterone level ≤ 1.73 nmol/L at screening), and documented progressive disease per Prostate Cancer Clinical Trials Working Group 3 (PCWG3) criteria. Eligible patients were also required to have an Eastern Cooperative Oncology Group performance status of 0 or 1 and sufficient tumor tissue obtained within 5 years before enrollment from a metastatic or primary tumor lesion not previously irradiated. Exclusion criteria included active brain metastases, conditions requiring systemic treatment with corticosteroids (>10 mg daily prednisone equivalent) or other immunosuppressive medications within 14 days of start of study treatment, and prior therapy specifically targeting T-cell costimulation or immune checkpoint pathways.

Cohort assignment was based on prior systemic treatment received in the castration-resistant setting and eligibility to begin immediate chemotherapy. For assignment to cohort A1, patients must have received 1–2 prior taxane-based chemotherapy regimens in the castration-resistant setting, and prior treatment with up to two novel hormonal therapies (eg, abiraterone, enzalutamide, or apalutamide) for castration-resistant disease was allowed. For assignment to cohort A2, patients must have been chemotherapy-naïve for mCRPC, have received prior abiraterone, enzalutamide, and/or apalutamide for castration-resistant disease up to 28 days before cohort assignment, and not be candidates for or have refused immediate chemotherapy. Although patients were excluded from cohort A2 if they had received prior chemotherapy for mCRPC, prior treatment with docetaxel for metastatic hormone-sensitive prostate cancer was allowed if at least 12 months had elapsed from the last dose. Patients in cohort A2 were also required to be asymptomatic or minimally symptomatic according to the Brief Pain Inventory-Short Form performed at screening. Patients were excluded from both cohorts A1 and A2 if they had myelodysplastic syndrome/acute myeloid leukemia, gastrointestinal disorders likely to interfere with absorption of study treatment, and/or had received previous treatment with a PARP inhibitor, mitoxantrone, cyclophosphamide, or platinum-based chemotherapy.

Treatment

Patients in cohorts A1 and A2 received a combination of intravenous nivolumab 480 mg every 4 weeks and oral rucaparib 600 mg two times per day. Nivolumab dosing was limited to at most 2 years from the date of first nivolumab dose in the absence of disease progression; rucaparib was administered continuously until disease progression. Treatment with either nivolumab or rucaparib could also be prematurely discontinued due to unacceptable toxicity, withdrawal of patient consent, or the end of the trial, whichever occurred first.

Endpoints and assessments

As previously described,²⁶ the co-primary endpoints for CheckMate 9KD were ORR (defined as the proportion of patients achieving a confirmed complete or partial response as assessed by the investigator using PCWG3 criteria) and PSA response rate (PSA₅₀-RR; defined as the proportion of patients with a $\geq 50\%$ decrease in PSA from baseline). Secondary endpoints included time to and duration of objective response, time to PSA progression, investigator-assessed radiographic progression-free survival (rPFS), OS, and safety. Time to and duration of objective response, time to PSA progression, and rPFS were evaluated using PCWG3 criteria. For cohorts A1 and A2, all efficacy endpoints were assessed prospectively in the all-treated population (all patients receiving at least one dose of nivolumab and/or rucaparib) and in subgroups based on HRD status (positive versus negative/not evaluable). As previously described,²⁶ HRD status was determined before cohort assignment using the validated next-generation sequencing-based FoundationOne CDx and FoundationACT tests (Foundation Medicine Inc, Cambridge, MA, USA) for tissue-based and plasma-based assessment, respectively. HRD positivity from tissue was defined as the presence of a gene alteration that included protein truncating mutations, protein truncating rearrangements, splice site mutations, homozygous deletions, or deleterious missense mutations in *ATM*, *BARD1*, *BRCA1*, *BRCA2*, *BRIP1*, *CDK12*, *CHEK2*, *FANCA*, *NBN*, *PALB2*, *RAD51*, *RAD51B*, *RAD51C*, *RAD51D*, or *RAD54L*. HRD positivity from plasma was defined as the presence of a gene alteration that included protein truncating mutations, protein truncating rearrangements, splice site mutations, or deleterious missense mutations in *ATM*, *BRCA1*, *BRCA2*, *CDK12*, *CHEK2*, or *PALB2*. All testing for HRD was performed within Foundation Medicine Inc's College of American Pathologists-accredited, Clinical Laboratory Improvement Amendments-certified laboratory. A patient was considered HRD-positive if one of the two assays described (tissue based or plasma based) detected an alteration as defined above. Objective responses and related endpoints were determined only in patients with measurable disease at baseline; PSA responses and related endpoints were determined only in patients with a baseline and at least one postbaseline PSA assessment (PSA-evaluable patients).

Post hoc exploratory endpoints included the time to and duration of PSA response, and associations between efficacy outcomes and specific HRD-related genetic alterations or tumor mutational burden (TMB). TMB was measured using the FoundationOne CDx assay (Foundation Medicine, Cambridge, MA, USA), counting all synonymous and nonsynonymous mutations present within 1.1 Mb of coding genome and filtering out potential germline variants. Analyses were conducted based on the median TMB for all treated patients with available TMB data across all cohorts in the CheckMate 9KD trial, which was 6.7 mutations per Mb.

Adverse events (AEs), graded per National Cancer Institute Common Terminology Criteria for Adverse Events V.4.03, were assessed continuously and are reported from first dose of nivolumab plus rucaparib up to 30 days after last dose of study drug. Treatment-related AEs (TRAEs) were defined as events considered by the investigator to be related to any study treatment (ie, nivolumab, rucaparib, or both); no data are available on assignment of an event to a specific treatment. For CheckMate 9KD, immune-mediated AEs (ie, events consistent with an immune-mediated mechanism or component for which noninflammatory etiologies were excluded, eg, infection or tumor progression) are reported from first dose up to 100 days after last dose of study drug.²⁶

As outlined in the prior publication from this study,²⁶ assessment of tumors by CT or MRI and radionuclide bone scans were performed at screening, every 8 weeks (± 7 days) after the first dose for the first 24 weeks, then every 12 weeks (± 7 days) until disease progression or treatment discontinuation (whichever occurred later). Objective responses and progressive disease were confirmed by repeat scans. For cohorts A1 and A2, PSA was assessed locally at screening, on day 1 of cycles 1–4, then on day 1 of every subsequent even-numbered cycle (cycle 6, cycle 8, cycle 10, etc). PSA responses were confirmed by a second consecutive assessment performed at least 3 weeks later.

Statistical analyses

Planned sample sizes for cohorts A1 and A2 were calculated using the precision approach for the dual primary endpoints with respective planned enrollment of 48 and 60 patients with baseline measurable disease evaluable for ORR and 80 and 100 patients evaluable for PSA₅₀-RR. Power calculations were assessed for each primary endpoint using the one-cohort binomial test, with the planned number of treated patients expected to provide adequate power for detecting an increase of 15% in ORR and an increase of 10% in PSA₅₀-RR compared with standard-of-care reference rates. Estimates of reference ORR and PSA response rates are described in online supplemental methods 1. Response rates and corresponding two-sided exact 95% CIs were calculated using Clopper–Pearson methodology.²⁷ The Kaplan–Meier method was used to estimate time to and duration of objective response, time to PSA progression, rPFS, and OS.²⁸ Median values and corresponding 95%

Table 1 Baseline demographic and clinical characteristics in cohorts A1 and A2

Characteristic	Cohort A1 (postchemotherapy) (N=88)	Cohort A2 (chemotherapy-naïve) (N=71)
Median age (range), years	66 (46–85)	73 (51–87)
Age categories, n (%)		
<70 years	53 (60.2)	29 (40.8)
≥70 years	35 (39.8)	42 (59.2)
Race, n (%)		
White	72 (81.8)	64 (90.1)
Black or African American	4 (4.5)	1 (1.4)
Asian	2 (2.3)	1 (1.4)
Other	10 (11.4)	5 (7.0)
Geographic region, n (%)		
Europe	33 (37.5)	22 (31.0)
Rest of the world*	38 (43.2)	28 (39.4)
USA	17 (19.3)	21 (29.6)
ECOG PS, n (%)		
0	39 (44.3)	30 (42.3)
1	48 (54.5)	41 (57.7)
Not reported	1 (1.1)	0
Gleason score, n (%)		
≤7	24 (27.3)	29 (40.8)
>7	60 (68.2)	39 (54.9)
Not reported	4 (4.5)	3 (4.2)
Median time since diagnosis (range), years	5.2 (1.1–25.1)	4.1 (0.4–19.6)
Bone lesions, n (%)		
0	7 (8.0)	9 (12.7)
1–4	17 (19.3)	13 (18.3)
>4	63 (71.6)	46 (64.8)
Not reported	1 (1.1)	3 (4.2)
Visceral metastases, n (%)		
Yes	30 (34.1)	17 (23.9)
No	56 (63.6)	48 (67.6)
Not reported	2 (2.3)	6 (8.5)
Measurable disease, n (%)	58 (65.9)	39 (54.9)
Average daily worst pain intensity, n (%)		
<4	66 (75.0)	57 (80.3)
≥4	19 (21.6)	13 (18.3)
Not reported	3 (3.4)	1 (1.4)
Median PSA (range), ng/mL	95.8 (0.1–4816.0)	37.8 (0.6–5807.0)
HRD status, n (%)		
Positive	45 (51.1)	34 (47.9)
Negative	40 (45.5)	36 (50.7)
Not evaluable†	3 (3.4)	1 (1.4)
Hemoglobin, n (%)		
<110g/L	22 (25.0)	11 (15.5)
≥110g/L	66 (75.0)	60 (84.5)
Alkaline phosphatase, n (%)		
<1.5 × ULN	66 (75.0)	57 (80.3)
≥1.5 × ULN	22 (25.0)	14 (19.7)
Prior cancer surgery, n (%)	42 (47.7)	30 (42.3)
Prior radiotherapy, n (%)	57 (64.8)	35 (49.3)

Continued

Table 1 Continued

Characteristic	Cohort A1 (postchemotherapy) (N=88)	Cohort A2 (chemotherapy-naïve) (N=71)
Prior taxane chemotherapy regimens in the castration-resistant setting, n (%)		
1	62 (70.5)	0
2	26 (29.5)	0
Prior novel hormonal therapy, n (%)	65 (73.9)	70 (98.6)§
Abiraterone only	19 (21.6)‡	43 (60.6)
Enzalutamide only	19 (21.6)	17 (23.9)§
Abiraterone and enzalutamide	27 (30.7)	10 (14.1)

*Represents Australia, Canada and South America.

†Represents patients with missing values for HRD using the assays described in the Methods section; reasons for missing values include, for example, missing or inadequate sample material or methodology/assay failures.

‡Notification of prior treatment with apalutamide in one patient recorded as receiving abiraterone alone was received after database lock; in total 18 patients (20.5%) in cohort A1 received prior abiraterone alone and one patient (1.1%) received prior treatment with both abiraterone and apalutamide.

§Notification of prior treatment with enzalutamide in one additional patient was received after database lock; in total 18 patients (25.4%) in cohort A2 received prior enzalutamide alone and all 71 (100.0%) received prior treatment with 1–2 novel hormonal therapies per protocol. ECOG PS, Eastern Cooperative Oncology Group performance status; HRD, homologous recombination deficiency; PSA, prostate-specific antigen; ULN, upper limit of normal.

CI) for duration of objective response, rPFS, and OS were constructed based on a log-log transformed CI for the survivor function.²⁹

RESULTS

Patients

Overall, 88 and 71 eligible patients with mCRPC received treatment with nivolumab plus rucaparib in cohorts A1 and A2, respectively. Baseline demographic and clinical characteristics are shown in [table 1](#).

In cohorts A1 and A2, respectively, median age (range) was 66 (46–85) and 73 (51–87) years, 30 (34.1%) and 17 (23.9%) patients had visceral metastases, 58 (65.9%) and 39 (54.9%) had measurable disease at baseline, and 45 (51.1%) and 34 (47.9%) had HRD-positive tumors. Per the cohort-specific inclusion criteria, all 88 patients in cohort A1 had received one or two prior taxane-based chemotherapy regimens (docetaxel and/or cabazitaxel); 62 (70.5%) had received one prior regimen and 26 (29.5%) had received two prior regimens. Of the 26 patients receiving two prior taxane-based chemotherapy regimens, two had not received a prior novel hormonal therapy, 11 had also received one prior novel hormonal therapy, and 13 had also received two prior novel hormonal therapies. Patient disposition is shown in online supplemental table 1; at database lock (July 17, 2020, for cohort A1; March 12, 2021, for cohort A2), 83 (94.3%) patients in cohort A1 and 65 (91.5%) patients in cohort A2 had discontinued all study treatment, mostly because of disease progression (65 (73.9%) and 43 (60.6%) patients, respectively) or study drug toxicity (9 (10.2%) and 8 (11.3%) patients, respectively). One patient in cohort A1 (1.1%) and one in cohort A2 (1.4%) discontinued due to death.

Study drug exposure

Overall median duration of nivolumab plus rucaparib combination therapy (range) was 4.4 (0.3–17.9) months in cohort A1 and 5.8 (0.1–30.9) months in cohort A2. Treatment exposure data for the individual components are summarized in online supplemental table 2. Median duration of treatment (range) for nivolumab was 3.7 (0.0–17.8) months in cohort A1 and 4.6 (0.0–23.2) months in cohort A2, and for rucaparib was 4.0 (0.3–17.9) months in cohort A1 and 5.5 (0.0–30.9) months in cohort A2. The median number of administered nivolumab doses (range) was 4.5 (1–19) and 6.0 (1–25) in cohorts A1 and A2, respectively. Median duration of follow-up was 11.9 and 17.5 months, respectively.

Efficacy, cohort A1 (postchemotherapy)

Among 58 treated patients with baseline measurable disease in cohort A1, the confirmed ORR (95% CI) was 10.3% (3.9% to 21.2%), comprising six patients who achieved partial responses ([table 2](#)). Median time to objective response (range) was 1.9 (1.6–3.7) months and median duration of objective response (95% CI) was 6.5 (3.5 to not estimable) months. In 84 PSA-evaluable patients, the confirmed PSA₅₀-RR (95% CI) was 11.9% (5.9% to 20.8%; [table 2](#)). Median time to PSA response (range) was 1.0 (0.9–3.0) month and median duration of PSA response (95% CI) was 6.6 (5.6 to 9.5) months. Median time to PSA progression (95% CI) was 3.8 (2.8 to 6.5) months. In all 88 treated patients, median rPFS (95% CI) was 4.9 (3.7 to 5.7) months ([figure 1A](#)) and median OS (95% CI) was 13.9 (10.4 to 15.8) months ([figure 1B](#)).

The confirmed ORR (95% CI) among subpopulations of patients in cohort A1 with baseline measurable disease and HRD-positive (n=29) versus HRD-negative/

Table 2 Objective and PSA response outcomes in cohort A1 and A2

	Cohort A1 (postchemotherapy) (N=88)		Cohort A2 (chemotherapy-naïve) (N=71)			
	Overall	HRD-positive	HRD-negative/not evaluable	Overall	HRD-positive	HRD-negative/not evaluable
Objective response*						
Evaluable patients, n†	58	29	29	39	20	19
Confirmed ORR (95% CI), %	10.3 (3.9 to 21.2)	17.2 (5.8 to 35.8)	3.4 (0.1 to 17.8)	15.4 (5.9 to 30.5)	25.0 (8.7 to 49.1)	5.3 (0.1 to 26.0)
BOR, n (%)						
Complete response	0	0	0	0	0	0
Partial response	6 (10.3)	5 (17.2)	1 (3.4)	6 (15.4)	5 (25.0)	1 (5.3)
Stable disease	31 (53.4)	16 (55.2)	15 (51.7)	26 (66.7)	11 (55.0)	15 (78.9)
Progressive disease	18 (31.0)	5 (17.2)	13 (44.8)	5 (12.8)	3 (15.0)	2 (10.5)
Unable to determine	3 (5.2)	3 (10.3)	0	2 (5.1)	1 (5.0)	1 (5.3)
PSA response‡						
Evaluable patients, n§	84	44	40	66	31	35
Confirmed PSA ₃₀ -RR (95% CI), %	11.9 (5.9 to 20.8)	18.2 (8.2 to 32.7)	5.0 (0.6 to 16.9)	27.3 (17.0 to 39.6)	41.9 (24.5 to 60.9)	14.3 (4.8 to 30.3)
Confirmed or unconfirmed PSA ₃₀ -RR (95% CI), %	19.0 (11.3 to 29.1)	29.5 (16.8 to 45.2)	7.5 (1.6 to 20.4)	31.8 (20.9 to 44.4)	48.4 (30.2 to 66.9)	17.1 (6.6 to 33.6)

*Confirmed complete or partial response per PCWG3.

†Patients with measurable disease at baseline.

‡A decrease in PSA from baseline to the lowest postbaseline PSA result of ≥50%; a second consecutive value obtained at least 3 weeks later was required for confirmation of PSA responses.

§Patients with a baseline and at least one postbaseline PSA assessment.

BOR, best overall response; HRD, homologous recombination deficiency; ORR, objective response rate; PCWG3, Prostate Cancer Clinical Trials Working Group 3; PSA, prostate-specific antigen; PSA₃₀-RR, PSA response rate.

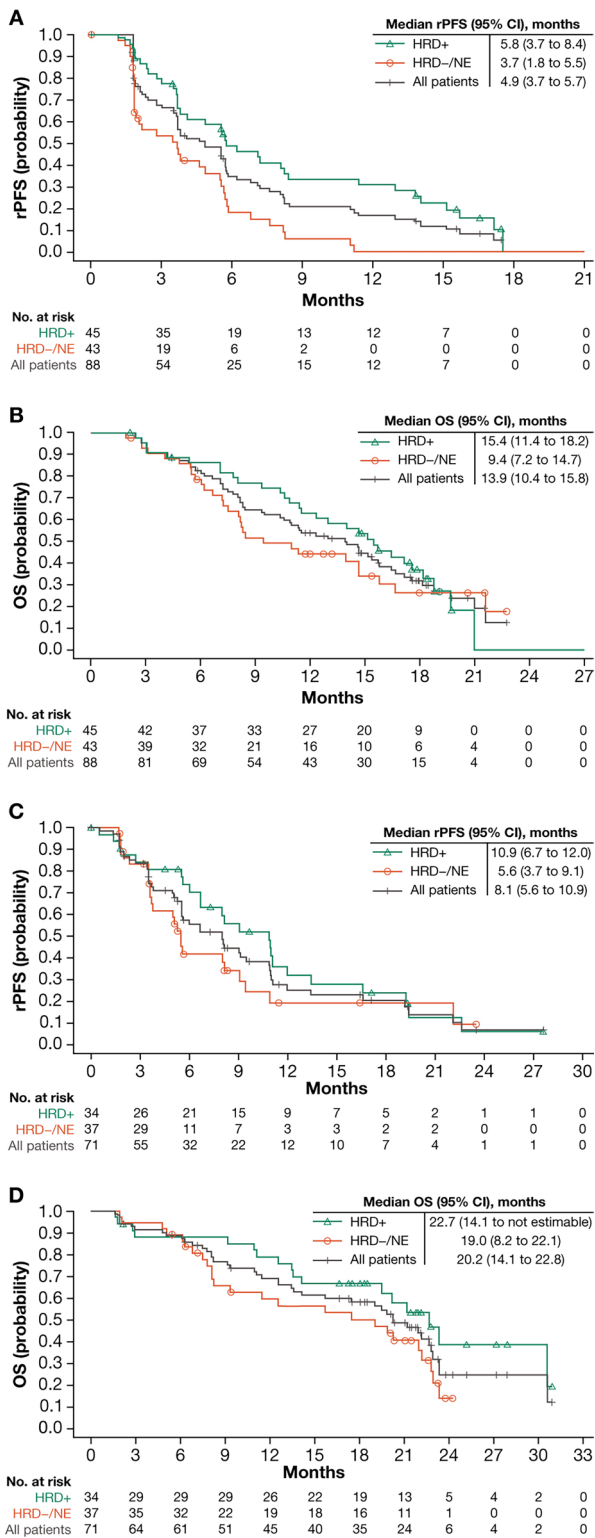


Figure 1 Kaplan-Meier plots of rPFS and OS in all treated patients and based on HRD status for cohort A1 (A, B) and cohort A2 (C, D). HRD, homologous recombination deficiency; NE, not evaluable; OS, overall survival; rPFS, radiographic progression-free survival.

not evaluable (n=29) tumors was 17.2% (5.8% to 35.8%) versus 3.4% (0.1% to 17.8%), respectively (table 2). The confirmed PSA₅₀-RR (95% CI) among subpopulations of PSA-evaluable patients in cohort A1 with HRD-positive

(n=44) versus HRD-negative/not evaluable (n=40) tumors was 18.2% (8.2% to 32.7%) versus 5.0% (0.6% to 16.9%; table 2). Among all treated patients in cohort A1 with HRD-positive (n=45) versus HRD-negative/not evaluable (n=43) tumors, median rPFS (95% CI) was 5.8 (3.7 to 8.4) versus 3.7 (1.8 to 5.5) months, and median OS (95% CI) was 15.4 (11.4 to 18.2) versus 9.4 (7.2 to 14.7) months (figure 1A,B).

Efficacy, cohort A2 (chemotherapy-naïve)

Among 39 treated patients with baseline measurable disease in cohort A2, the confirmed ORR (95% CI) was 15.4% (5.9% to 30.5%), comprising six patients who achieved partial responses (table 2). Median time to objective response (range) was 2.0 (1.8–11.0) months and median duration of objective response (95% CI) was 7.1 (3.8 to not estimable) months. In 66 PSA-evaluable patients, the confirmed PSA₅₀-RR (95% CI) was 27.3% (17.0% to 39.6%; table 2). Median time to PSA response (range) was 1.8 (0.9–7.3) months and median duration of PSA response (95% CI) was 12.9 (4.1 to not estimable) months. Median time to PSA progression (95% CI) was 3.5 (2.8 to 6.2) months. In all 71 treated patients, median rPFS (95% CI) was 8.1 (5.6 to 10.9) months (figure 1C) and median OS (95% CI) was 20.2 (14.1 to 22.8) months (figure 1D).

The confirmed ORR (95% CI) among subpopulations of patients in cohort A2 with baseline measurable disease and HRD-positive (n=20) versus HRD-negative/not evaluable (n=19) tumors was 25.0% (8.7% to 49.1%) versus 5.3% (0.1% to 26.0%), respectively (table 2). The confirmed PSA₅₀-RR (95% CI) among subpopulations of PSA-evaluable patients in cohort A2 with HRD-positive (n=31) versus HRD-negative/not evaluable (n=35) tumors was 41.9% (24.5% to 60.9%) versus 14.3% (4.8% to 30.3%; table 2). Among all treated patients in cohort A2 with HRD-positive (n=34) versus HRD-negative/not evaluable (n=37) tumors, median rPFS (95% CI) was 10.9 (6.7 to 12.0) versus 5.6 (3.7 to 9.1) months, and median OS (95% CI) was 22.7 (14.1 to not estimable) versus 19.0 (8.2 to 22.1) months (figure 1C,D).

Biomarker analyses, cohorts A1 (postchemotherapy) and A2 (chemotherapy-naïve)

Data on specific HRD-related genetic mutations were available for 42 patients with HRD-positive tumors in cohort A1 and 33 patients with HRD-positive tumors in cohort A2. In both cohorts, the most frequent mutations were in the *BRCA1/2* (n=12 and n=15, respectively) or *ATM* (n=15 and n=9, respectively) genes, with the vast majority being frameshift or truncating variants (online supplemental figure 1).

Maximum changes in tumor size and PSA are shown based on HRD gene mutation(s) in figures 2 and 3, with related gene-specific outcomes summarized in online supplemental tables 3 and 4. The most noteworthy response outcomes were observed in patients carrying *BRCA1/2* mutations. In cohort A1, among nine patients

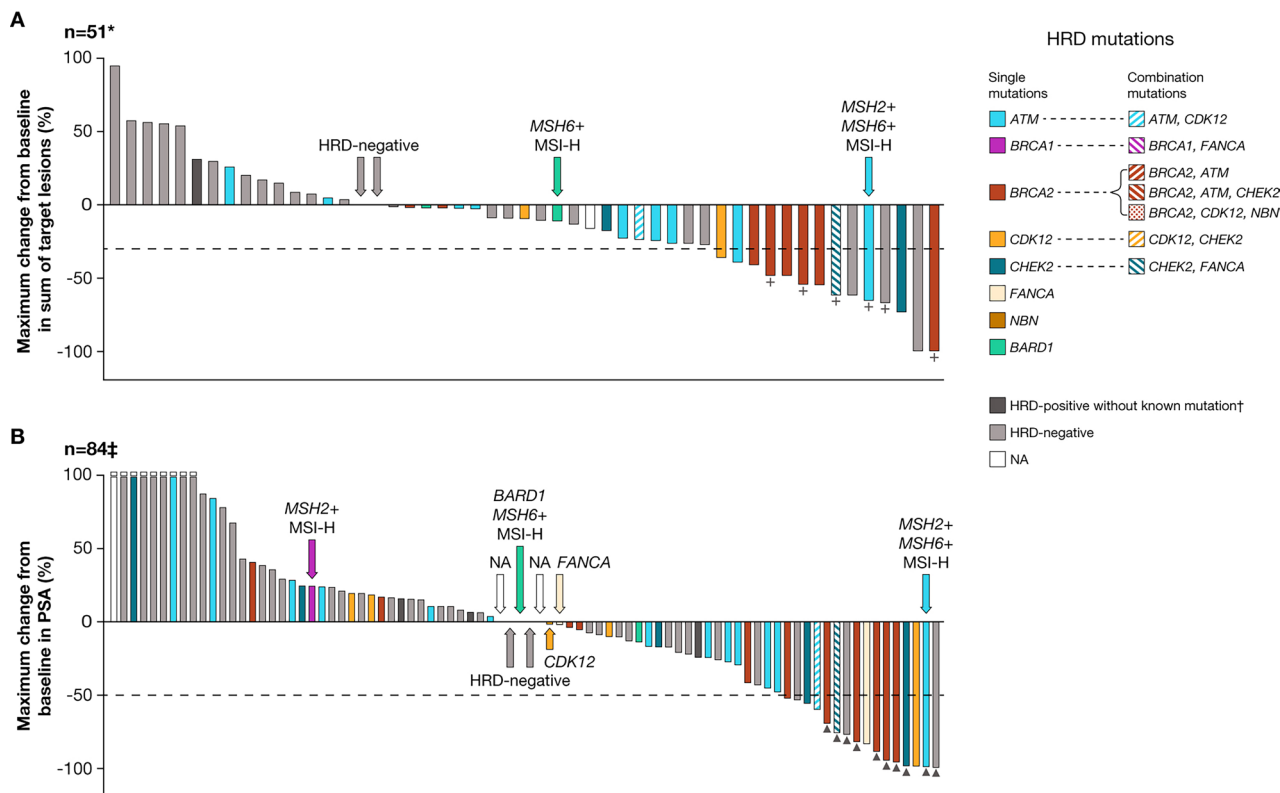


Figure 2 Waterfall plots of maximum change from baseline in tumor size (A) and PSA (B) based on HRD-related genetic mutations for cohort A1. *Patients with a measurable target lesion at baseline and at least one on-treatment tumor assessment; seven patients did not have available tumor change data. †Represents patients categorized as HRD-positive but with missing information on the specific genetic mutation(s). ‡Patients with baseline PSA and at least one postbaseline PSA assessment. Horizontal reference lines indicate a 30% reduction consistent with a PCWG3 response (A) or a 50% reduction consistent with a PSA response (B). Open squares indicate truncation of percent change at +100%. +Symbol represents a confirmed objective response; ▲ Symbol represents a confirmed PSA response. HRD, homologous recombination deficiency; MSI-H, microsatellite instability-high; NA, not available; PCWG3, Prostate Cancer Clinical Trials Working Group 3; PSA, prostate-specific antigen.

with baseline measurable disease and *BRCA1/2* mutations (all *BRCA2* alone), six (66.7%) had a $\geq 30\%$ reduction in target lesions, with three (33.3%) achieving a confirmed objective response (figure 2A, table 3). Among 12 PSA-evaluable patients with *BRCA1/2* mutations (11 *BRCA2* alone, 1 *BRCA1* alone), 6 (50.0%) had a $\geq 50\%$ reduction in PSA, with 5 (41.7%) achieving a confirmed PSA response (figure 2B, table 3).

In cohort A2, among nine patients with baseline measurable disease and *BRCA1/2* mutations (four *BRCA2* alone, three *BRCA2* with other HRD gene mutations, one *BRCA1* alone, and one *BRCA1* with other HRD gene mutations), three (33.3%) had a $\geq 30\%$ reduction in target lesions and all three achieved a confirmed objective response (figure 3A, table 3). Among 13 PSA-evaluable patients with *BRCA1/2* mutations (9 *BRCA2* alone, 3 *BRCA2* with other HRD gene mutations, and 1 *BRCA1* with other HRD gene mutations), all 13 (100.0%) had a $\geq 50\%$ reduction in PSA, with 11 (84.6%) achieving a confirmed PSA response (figure 3B, table 3). Median rPFS and OS for patients with *BRCA1/2* mutations are shown in table 3 and were relatively consistent with median observed for the overall HRD-positive subgroups (figure 1A–D). Figures 2 and 3 also show that a small number of patients

had microsatellite instability-high disease and/or were carrying *MSH2* and/or *MSH6* structural rearrangements, although there were too few patients to assess any associations with changes in tumor size or PSA.

Eighty-two of 88 patients in cohort A1 and 60 of 71 in cohort A2 had available TMB data. As shown in online supplemental table 5, clinical activity was observed regardless of TMB status. However, there were no consistent trends in efficacy outcomes among subgroups of patients with TMB at or above versus below the median (6.7 mutations per Mb).

Safety, cohorts A1 (postchemotherapy) and A2 (chemotherapy-naïve)

Any-grade TRAEs occurred in 93.2% and 90.1% of all treated patients in cohorts A1 and A2, respectively (table 4). The most common any-grade treatment-related events were nausea (40.9%), fatigue (33.0%), anemia (26.1%), and decreased appetite (26.1%) in cohort A1, and nausea (40.8%), anemia (32.4%), fatigue (28.2%), and increased alanine aminotransferase (ALT; 28.2%) in cohort A2. Grade 3–4 TRAEs occurred in 54.5% and 50.7% of patients, respectively, with the most common events being anemia (20.5%) and neutropenia (10.2%)

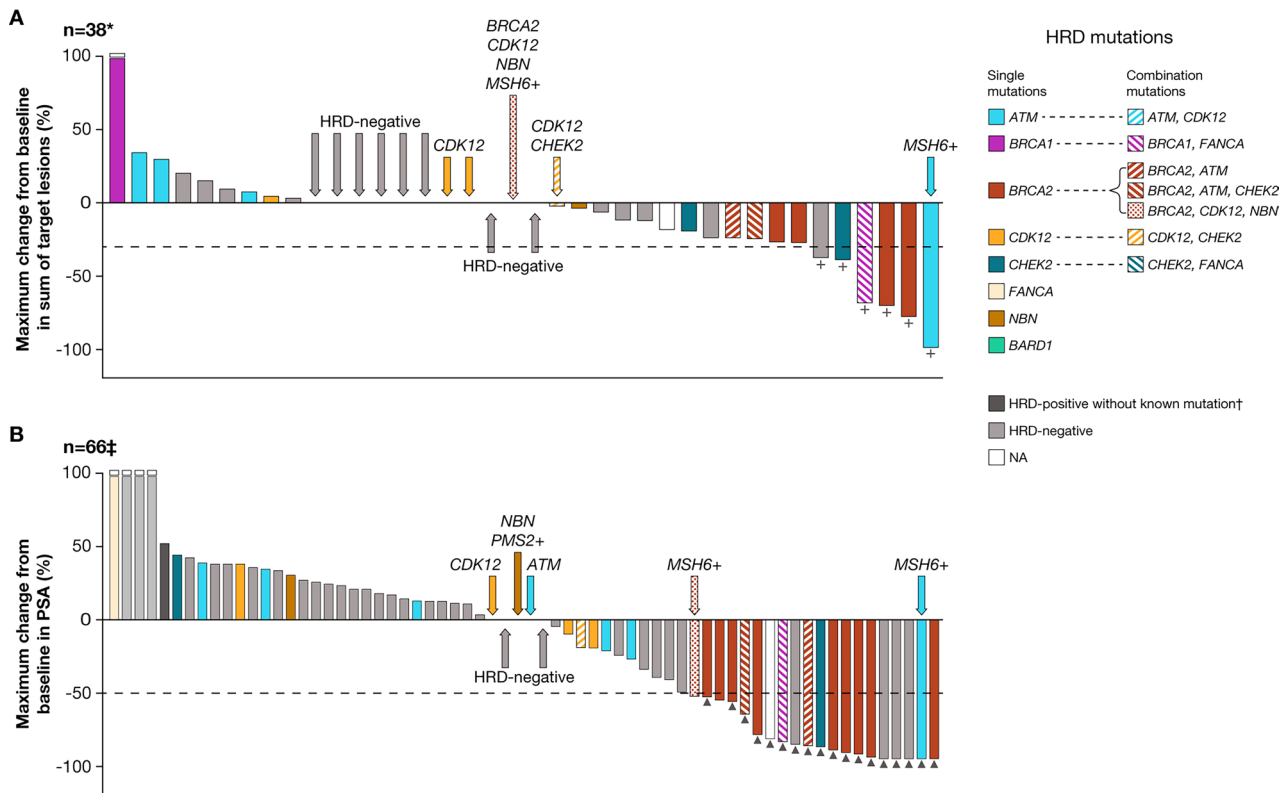


Figure 3 Waterfall plots of maximum change from baseline in tumor size (A) and PSA (B) based on HRD-related genetic mutations for cohort A2. *Patients with a measurable target lesion at baseline and at least one on-treatment tumor assessment; one patient did not have available tumor change data. †Represents patients categorized as HRD-positive but with missing information on the specific genetic mutation(s). ‡Patients with baseline PSA and at least one postbaseline PSA assessment. Horizontal reference lines indicate a 30% reduction consistent with a PCWG3 response (A) or a 50% reduction consistent with a PSA response (B). Open squares indicate truncation of percent change at +100%. +Symbol represents a confirmed objective response; ▲ Symbol represents a confirmed PSA response. HRD, homologous recombination deficiency; NA, not available; PCWG3, Prostate Cancer Clinical Trials Working Group 3; PSA, prostate-specific antigen.

in cohort A1 and anemia (14.1%) and increased ALT (12.7%) in cohort A2.

Any-grade treatment-related serious AEs were reported in 28.4% and 19.7% of patients in cohorts A1 and A2, with grade 3–4 treatment-related serious AEs reported in 27.3% and 18.3%, respectively (online supplemental table 6). The most common grade 3–4 treatment-related serious AEs were anemia in cohort A1 (6.8%), and increased ALT and aspartate aminotransferase in cohort A2 (2.8% each). Any-grade TRAEs led to discontinuation of one or both study drugs in 27.3% and 23.9% of patients in cohorts A1 and A2, respectively (online supplemental table 7). The most common grade 3–4 events leading to discontinuation were febrile neutropenia and neutropenia in cohort A1 (2.3% each) and anemia in cohort A2 (4.2%).

The most commonly reported individual any-grade immune-mediated AE in both cohorts was hypothyroidism (8.0% and 7.0% in cohorts A1 and A2, respectively; online supplemental table 8). Hepatic immune-mediated AEs comprised the most frequent grade 3–4 immune-mediated events, reported in 5.7% of patients in cohort A1 and 7.0% of patients in cohort A2.

In cohort A1, one on-study death was considered related to study treatment. Specifically, a patient with a pre-existing meningioma had a stroke, for which a relationship to rucaparib could not be excluded by the investigator, after 28 days on rucaparib and two doses of nivolumab and died 2 months later due to postthrombolysis hematoma. There were no treatment-related deaths in cohort A2.

DISCUSSION

Based on the suboptimal efficacy of nivolumab monotherapy in unselected populations of patients with mCRPC, the phase 2 CheckMate 9KD trial was designed to investigate the hypothetical clinical benefits of combining nivolumab with other anticancer treatments that could potentially stimulate a more immune-responsive tumor microenvironment, namely rucaparib, docetaxel, or enzalutamide. Results for the cohort of patients treated with nivolumab plus docetaxel (cohort B) have been reported in a separate publication and showed encouraging clinical activity of this combination in men with chemotherapy-naïve mCRPC.²⁶ Here, we report results

**Table 3** Efficacy outcomes in patients with *BRCA1/2* mutations in cohorts A1 and A2

	Cohort A1 (postchemotherapy) (N=12)	Cohort A2 (chemotherapy-naïve) (N=15)
Objective response*		
Evaluable patients, n†	9‡	9
Confirmed ORR (95% CI), %	33.3 (7.5 to 70.1)	33.3 (7.5 to 70.1)
BOR, n (%)		
Complete response	0	0
Partial response	3 (33.3)	3 (33.3)
Stable disease	4 (44.4)	5 (55.6)
Progressive disease	1 (11.1)	1 (11.1)
Unable to determine	1 (11.1)	0
PSA response§		
Evaluable patients, n¶	12	13
Confirmed PSA ₅₀ -RR (95% CI), %	41.7 (15.2 to 72.3)	84.6 (54.6 to 98.1)
Survival outcomes		
Evaluable patients**	12	15
Median rPFS (95% CI), months	5.6 (2.8 to 15.7)	10.9 (5.6 to 12.0)
Median OS (95% CI), months	15.2 (3.0 to not estimable)	20.2 (11.1 to not estimable)

*Confirmed complete or partial response per PCWG3.

†Patients with measurable disease at baseline and *BRCA1/2* mutations.

‡Includes one patient with measurable disease at baseline and a *BRCA2* mutation, but with no on-treatment tumor assessment; this patient is omitted from the associated waterfall plot (figure 2A).

§A decrease in PSA from baseline to the lowest postbaseline PSA result of $\geq 50\%$; a second consecutive value obtained at least 3 weeks later was required for confirmation of PSA responses.

¶Patients with a baseline and at least one postbaseline PSA assessment and *BRCA1/2* mutations.

**All treated patients with *BRCA1/2* mutations.

BOR, best overall response; ORR, objective response rate; OS, overall survival; PCWG3, Prostate Cancer Clinical Trials Working Group 3; PSA, prostate-specific antigen; PSA₅₀-RR, PSA response rate; rPFS, radiographic progression-free survival.

from cohorts A1 and A2 of CheckMate 9KD, which showed that the clinical antitumor activity of nivolumab plus rucaparib was limited in the overall (unselected) chemotherapy-naïve and postchemotherapy mCRPC cohorts, and that no new safety signals were observed with the combination regimen.

Although nivolumab plus rucaparib had minimal clinical activity in the unselected mCRPC populations, noteworthy efficacy differences were observed when patients were analyzed by HRD mutational status. Among patients with HRD-positive tumors, encouraging response rates and survival outcomes were observed, regardless of whether the patients had received prior chemotherapy for mCRPC. Moreover, despite small sample sizes, subgroups of patients harboring *BRCA1/2* mutations had further improved objective and PSA response rates, although survival outcomes in these subgroups were similar to those reported for the overall HRD-positive subpopulations. In both cohorts, most patients carrying *BRCA1/2* mutations had an alteration in the *BRCA2* gene; as such, any differences in the relative influence of *BRCA1* versus *BRCA2* mutations on response to nivolumab plus rucaparib could not be determined from this patient population. Of note, in a prior study of the combination of durvalumab and olaparib for mCRPC,⁴ most responders

to treatment carried *BRCA* mutations, and in a recent study of pembrolizumab plus olaparib,³⁰ patients with mCRPC carrying *BRCA* mutations showed higher objective and PSA response rates versus those not carrying these mutations, results that support the findings reported here. These observations might be somewhat expected as several studies have shown improved responses to PARP inhibitor monotherapy in patients with mCRPC and *BRCA1/2* mutations compared with patients carrying other DNA damage repair mutations and/or unselected populations,^{17 19 31 32} and preliminary small-scale analyses have suggested that patients carrying DNA damage repair mutations (including in *BRCA1/2* or *ATM*) are more responsive to PD-1/PD-L1 checkpoint inhibitor therapy than those without these mutations.^{10 15 16} Interestingly, in some of the prior studies of PARP inhibitor monotherapy, PFS and/or OS were improved among patients with *BRCA* mutations versus those with non-*BRCA* DNA damage repair mutations^{31 32}—an outcome that was not seen in the CheckMate 9KD cohorts. It is unclear why the higher response rates in patients with *BRCA*-positive tumors versus the overall HRD-positive subpopulations observed in our study did not translate into observable survival advantages. In contrast to the patients in cohorts A1 and A2 with HRD-positive tumors, those with

Table 4 Treatment-related AEs in all treated patients in cohorts A1 and A2

Treatment-related AEs, n (%) [*]	Cohort A1 (postchemotherapy) (N=88)		Cohort A2 (chemotherapy-naïve) (N=71)	
	Any grade	Grade 3–4	Any grade	Grade 3–4
Any treatment-related AE	82 (93.2)	48 (54.5)	64 (90.1)	36 (50.7)
Nausea	36 (40.9)	4 (4.5)	29 (40.8)	0
Fatigue	29 (33.0)	5 (5.7)	20 (28.2)	2 (2.8)
Anemia	23 (26.1)	18 (20.5)	23 (32.4)	10 (14.1)
Decreased appetite	23 (26.1)	2 (2.3)	13 (18.3)	3 (4.2)
Diarrhea	21 (23.9)	3 (3.4)	14 (19.7)	3 (4.2)
Vomiting	20 (22.7)	2 (2.3)	13 (18.3)	1 (1.4)
Asthenia	19 (21.6)	3 (3.4)	7 (9.9)	1 (1.4)
Alanine aminotransferase increased	16 (18.2)	6 (6.8)	20 (28.2)	9 (12.7)
Neutropenia	14 (15.9)	9 (10.2)	3 (4.2)	3 (4.2)
Aspartate aminotransferase increased	13 (14.8)	2 (2.3)	18 (25.4)	5 (7.0)
Dysgeusia	10 (11.4)	0	9 (12.7)	0
Thrombocytopenia	9 (10.2)	4 (4.5)	6 (8.5)	2 (2.8)
Pruritus	9 (10.2)	0	11 (15.5)	1 (1.4)
Acute kidney injury	6 (6.8)	3 (3.4)	1 (1.4)	1 (1.4)
Rash	6 (6.8)	1 (1.1)	8 (11.3)	1 (1.4)
Blood alkaline phosphatase increased	5 (5.7)	3 (3.4)	3 (4.2)	0
Leukopenia	4 (4.5)	3 (3.4)	1 (1.4)	0
Blood creatinine increased	4 (4.5)	0	15 (21.1)	0
Hepatotoxicity	4 (4.5)	2 (2.3)	1 (1.4)	1 (1.4)
Febrile neutropenia	3 (3.4)	3 (3.4)	0	0
Muscular weakness	2 (2.3)	2 (2.3)	2 (2.8)	0
Hepatitis	2 (2.3)	2 (2.3)	1 (1.4)	0
Lymphopenia	2 (2.3)	2 (2.3)	1 (1.4)	1 (1.4)
Gamma-glutamyl transferase increased	2 (2.3)	2 (2.3)	0	0
Hypophosphatemia	1 (1.1)	1 (1.1)	4 (5.6)	3 (4.2)
Neutrophil count decreased	0	0	3 (4.2)	2 (2.8)

^{*}Includes individual any-grade treatment-related AEs reported between first dose of nivolumab plus rucaparib and 30 days after the last dose of study drug and occurring in >10% of all treated patients and/or grade 3–4 treatment-related AEs reported between first dose of nivolumab plus rucaparib and 30 days after the last dose of study drug and occurring in >2% of all treated patients in either cohort. AE, adverse event.

HRD-negative tumors showed infrequent responses and appear to derive limited benefit from the nivolumab plus rucaparib combination.

As this trial did not include nivolumab and/or rucaparib monotherapy control arms, determining the contribution of each component to the observed outcomes is challenging. In the TRITON2 trial of rucaparib monotherapy for postchemotherapy mCRPC, an investigator-assessed ORR of 50.8%, a PSA₅₀-RR of 54.8%, and a median investigator-assessed rPFS of 8.5 months were reported among patients with *BRCA1/2* mutations,¹⁹ which might suggest, considering the findings from cohort A1 in this study, that nivolumab contributes little additional benefit over rucaparib alone. However, cross-study comparisons should be treated cautiously due to

the inherent influence of various factors (eg, study design and methodology and/or population characteristics) on the respective trial outcomes. For example, whereas patients in TRITON2 had received only one prior taxane regimen in the castration-resistant setting per the study inclusion criteria,¹⁹ almost a third of the patients in cohort A1 had received two prior taxane regimens for mCRPC, a distinction that might have influenced the clinical efficacy reported for each study. Data from the ongoing TRITON3 trial (NCT02975934) might provide a benchmark against which to further hypothesize on the potential clinical benefits of dual PD-1/PD-L1 and PARP inhibition in chemotherapy-naïve mCRPC populations. Nevertheless, based on results from cohort A1 of Check-Mate 9KD, along with the recent early discontinuation

for futility of the KEYLYNK-010 trial of pembrolizumab plus olaparib in postchemotherapy mCRPC,³³ further investigation of combination treatment with anti-PD-1/PD-L1 immune checkpoint inhibitors plus PARP inhibitors in unselected mCRPC populations appears to be unwarranted.

Although sample sizes were small, data from this trial showed clinical activity of nivolumab plus rucaparib in patients carrying non-*BRCA* HRD mutations. In the post-chemotherapy setting (cohort A1), confirmed objective and/or PSA responses were observed in patients with mutations in *ATM* alone, *CHEK2* alone, and both *CHEK2* and *FANCA*. In the chemotherapy-naïve setting (cohort A2), confirmed responses were observed in patients with mutations in *ATM* or *CHEK2* alone. This observation aligns with data from other studies of PARP inhibitors for mCRPC. For example, the TALAPRO-1 trial showed objective and/or PSA responses to monotherapy with the PARP inhibitor talazoparib in a small number of patients with mCRPC carrying only *ATM* or *PALB2* mutations.³² Likewise, the TRITON2 trial showed both objective and PSA responses to rucaparib monotherapy in patients with mCRPC and single *ATM*, *FANCA*, *BRIP1*, *PALB2*, and *RAD51B* mutations, although cohorts of patients carrying these mutations were very small.¹⁸ Interestingly, in TRITON2, responders with *CHEK2* mutations also carried mutations in *ATM* or *BRCA2*, leading the authors to suggest that *CHEK2* alteration alone might not be sufficient to render tumor cells responsive to rucaparib monotherapy.¹⁸ As with the overall HRD-positive and *BRCA*-positive populations, determining whether the addition of nivolumab incrementally improves responses rates over rucaparib alone in patients with non-*BRCA* HRD mutations is beyond the scope of the current study.

The role of TMB in antitumor responses to immune checkpoint inhibitors among patients with mCRPC remains uncertain, with some preliminary studies suggesting a positive relationship with ‘high’ TMB,¹⁶ and others suggesting that ‘high’ TMB does not predict improved response.^{34 35} Moreover, unlike in some other tumor types, there is no established threshold for ‘high’ TMB in patients with mCRPC and no standardized methodology for assessing TMB (eg, whole exome sequencing versus next-generation sequencing), further challenging the interpretation of results from these preliminary studies. Results from the current analyses did not demonstrate a clear association between ‘high’ or ‘low’ TMB and efficacy with combined nivolumab plus rucaparib. Additional prospective investigations would be required to determine the influence of TMB on response to immunotherapy and whether that influence is maintained with novel immunotherapy-based combination regimens.

The safety and tolerability profile of nivolumab plus rucaparib was as anticipated based on prior studies of the single agents in mCRPC or other tumors.^{18 19 36 37} Moreover, the types of TRAEs observed and their relative incidence was similar to that recently reported for a study of pembrolizumab combined with olaparib in

docetaxel-pretreated mCRPC.³⁸ Across both cohorts, there was only one treatment-related death. Furthermore, although this death was considered possibly related to rucaparib treatment by the study investigator, the patient had a preexisting condition (meningioma) that possibly contributed to the sequence of events leading to the fatal event.

In conclusion, the combination of nivolumab and rucaparib showed clinical efficacy in patients with HRD-positive chemotherapy-naïve or postchemotherapy mCRPC, particularly in those harboring *BRCA1/2* mutations. Safety of the combination was as expected, with no new signals identified. However, the modest activity observed as compared with historic single-agent therapy, the lack of study comparator arms, and the relatively short follow-up for these cohorts prevent adequate assessment of the clinical benefits of adding nivolumab to rucaparib.

Author affiliations

¹Department of Cancer Medicine, Gustave Roussy, University Paris Saclay, Villejuif, France

²Department of Urology, Rechts der Isar Medical Center, Technical University Munich, Munich, Germany

³Smilow Cancer Center, Yale School of Medicine, New Haven, Connecticut, USA

⁴Department of Medical Oncology, Royal Brisbane and Women’s Hospital, Herston, Queensland, Australia

⁵ICON Research, South Brisbane, Queensland, Australia

⁶Oncology Department, Clinica Universidad de Navarra, Pamplona, Spain

⁷Department of Surgery, Hôtel-Dieu de Québec, CHU de Québec-Université Laval, Québec City, Québec, Canada

⁸Department of Medical Oncology, National Center for Tumor Disease (NCT), University Hospital, Heidelberg, Germany

⁹Department of Oncology, Bradford Hill Clinical Research Center, Santiago, Chile

¹⁰Department of Medical Oncology, Centre Jean Perrin, Clermont-Ferrand, France

¹¹Department of Medical Oncology, Institut Paoli-Calmettes Aix-Marseille Université, Marseille, France

¹²Department of Oncology, Hospital Sirio-Libanes, Sao Paulo, Brazil

¹³Wellstar Health System Inc, Marietta, Georgia, USA

¹⁴Department of Medical Oncology, Instituto Jalisciense de Cancerología, Hospital Civil de Guadalajara, Guadalajara, Mexico

¹⁵Department of Medical Oncology, Monash Health, Melbourne, Victoria, Australia

¹⁶Department of Medical Oncology, Hospital Universitario 12 de Octubre, Madrid, Spain

¹⁷Department of Medical Oncology, Centre Léon Bérard, Lyon, France

¹⁸Department of Urology, Centre Hospitalier de l’Université de Montréal/CHUM, Montreal, Quebec, Canada

¹⁹Department of Urology, Jena University Hospital, Jena, Germany

²⁰Department of Medical Oncology, New York Oncology Hematology, Albany, New York, USA

²¹Duke Cancer Institute Center for Prostate and Urologic Cancers, Duke University, Durham, North Carolina, USA

²²Department of Biometrics and Data Sciences, Bristol Myers Squibb, Princeton, New Jersey, USA

²³Department of Clinical Oncology, Bristol Myers Squibb, Princeton, New Jersey, USA

²⁴Department of Translational Medicine, Bristol Myers Squibb, Princeton, New Jersey, USA

²⁵Department of Informatics and Predictive Sciences, Bristol Myers Squibb, Princeton, New Jersey, USA

²⁶Department of Translational Medicine, Clovis Oncology, Inc, Boulder, Colorado, USA

²⁷Department of Medicine, Division of Oncology, Washington University School of Medicine, St. Louis, Missouri, USA

Twitter Russell K Pachynski @RPachynski

Acknowledgements We thank the patients and their families for making this study possible, the clinical study teams who participated in the study, Bristol Myers Squibb (Princeton, NJ, USA) and Ono Pharmaceutical Company Ltd. (Osaka, Japan), and Foundation Medicine for collaborative development of the FoundationOne CDx and FoundationACT assays. The CheckMate 9KD trial was conducted as part of a clinical collaboration with Clovis Oncology (Boulder, CO, USA). Professional medical writing and editorial assistance were provided by Richard Daniel, PhD, of Parexel, funded by Bristol Myers Squibb.

Contributors All authors contributed to the data analysis and interpretation, drafting and revising of the manuscript, and provided final approval to submit the manuscript for publication. KF and RKP serve as guarantors for the content of this article.

Funding The CheckMate 9KD trial was supported by Bristol Myers Squibb.

Competing interests KF reports advisory board fees (all institutional) from Amgen, Astellas, AstraZeneca, Bayer, Clovis, Janssen, MSD, Novartis/AAA, Sanofi, CureVac, and Orion. MR reports research grants (all institutional) from Bristol Myers Squibb (BMS) and Janssen; speakers bureau fees from Astellas, BMS, Janssen, Merck, MSD, and Roche; and advisory board fees from Astellas, Janssen, Merck, MSD, and Roche. DPP reports consulting fees from Ada Cap, Amgen, Astellas, AstraZeneca, Bayer, Bicycle Therapeutics, Boehringer Ingelheim, BMS, Clovis Oncology, Exelixis, Gilead Sciences, Incyte, Ipsen, Johnson & Johnson/Janssen, Lilly, Mirati, Monopteros, Pfizer, Pharmacyclics, Regeneron, Roche, Seattle Genetics, and UroGen; stock ownership in Bellicium Pharmaceuticals and Tyme; payment for expert testimony from Sanofi and Celgene; research grants from Ada Cap, Agensys, Astellas Pharma, AstraZeneca, Bayer, BioXcel Therapeutics, BMS, Clovis Oncology, Eisai, Endocyte, Genentech, Gilead Sciences, Innocrin, Lilly, MedImmune, Medivation, Merck, Mirati, Novartis, Pfizer, Progenics, Replimune, Roche, Sanofi Aventis, and Seattle Genetics; local principal investigator (PI) nonfinancial interests (all institutional) in Ada Cap, Agensys, Inc., Astellas, AstraZeneca, Bayer, BioXcel Therapeutics, BMS, Clovis Oncology, Eisai, Eli Lilly, Endocyte, Genentech, Innocrin, MedImmune, Medivation, Merck, Mirati, Novartis, and Pfizer; medical writing support from Bioscript; study funding from Astellas; and editing support from Complete HealthVizion. JCG reports consulting fees from Eisai; honoraria from AstraZeneca, BMS, Ipsen, and MSD Australia, advisory board fees from BMS and Janssen (J&J); and stock ownership in ICON Cancer Care. JP-G reports research funding (all institutional) from BMS, Amgen, Roche, and Seattle Genetics; travel expenses from Roche, BMS, and MSD; and advisory board fees from BMS, Roche, Ipsen, Seattle Genetics, and MSD. LL reports local PI nonfinancial (all institutional) from Astellas, AstraZeneca, Bayer, BMS, Hoffman-La Roche, Janssen, MedImmune, Merck, Myovant, Pfizer, Sanofi and Telix. SZ reports research grants (institutional) from Eisai; speakers bureau fees from Eisai (personal) and Merck (institutional); honoraria for educational events from Eisai, Ipsen, Merck, MSD, and Pfizer; travel expenses from Celgene (institutional); advisory board fees from Amgen, Bayer, and Sanofi (personal), and Astellas, BMS, EUSA, Merck, MSD, Pfizer, and Roche, (all institutional); receipt of drugs (institutional) from KURA; local PI nonfinancial interests from Astellas, Bayer, Calithera Biosciences, Clovis Oncology, Exelixis, Sanofi/Aventis, and SEAGEN; and coordinating PI nonfinancial interests from AVEO Pharmaceuticals, BMS, Pfizer, and Roche. MB reports consulting fees from AstraZeneca, BMS, MSD Oncology, Novartis, and Roche/Genentech; and speakers bureau fees from AstraZeneca, BMS, MSD Oncology, and Roche/Genentech. HM reports travel expenses from Pfizer and Roche, advisory board fees from Astellas, Bayer, BMS, Janssen, MSD, Pfizer, Sanofi, AstraZeneca, and Roche; and PI nonfinancial interests from BMS, Janssen, MSD, Pfizer, Roche, and Sanofi. GG reports research funding (institutional) from BMS; speakers bureau fees (all institutional) from Amgen, Astellas Pharma, BMS, Ipsen, Janssen Oncology, MSD Oncology, and Sanofi/Aventis; travel expenses from Astellas Pharma, AstraZeneca, BMS, Ipsen, Janssen Oncology, and Sanofi; and advisory board fees (all institutional) from AstraZeneca, Bayer, BMS, Ipsen, Janssen, MSD Oncology, Pfizer, and Sanofi/Aventis. DAB reports research grants (all institutional) from Astellas, Bayer, and Janssen; speakers bureau fees from AstraZeneca, Bayer, BMS, Janssen, Merck, MSD, and Roche; and advisory board fees from Astellas, Bayer, Janssen. SLM reports speakers bureau fees from BMS; and local PI nonfinancial interests (all institutional) from BMS, Merck, and Roche/Genentech. JCVL reports employment from Hospital Civil de Guadalajara 'Fray Antonio Alcalde'; and local PI nonfinancial interests (all personal and institutional) from AstraZeneca, BMS, Europharma, Janssen, MSD, and Novartis. EMK reports speakers bureau fees from Astellas Pharma, Ipsen, and Janssen; writing engagement fees from Research Review; and local PI nonfinancial interests (all institutional) from Astellas Pharma, AstraZeneca, BMS, Merck KGaA, and Pfizer. DC reports consulting fees from Astellas Pharma, AstraZeneca, Bayer, Boehringer Ingelheim, BMS, Ipsen, Janssen Oncology, Lilly, MSD Oncology, Novartis, Pfizer, Pierre Fabre, Roche/Genentech,

and Sanofi; travel expenses from AstraZeneca Spain, BMS, Pfizer, and Roche; and research funding (institutional) from Janssen. AF reports honoraria from Astellas Pharma, AstraZeneca, Bayer, BMS, Ipsen, Janssen-Cilag, MSD Oncology, Pfizer, Roche/Genentech, and Sanofi/Aventis; and travel expenses from Astellas Pharma, AstraZeneca, Bayer, BMS, Ipsen, Janssen-Cilag, MSD Oncology, Pfizer, Roche/Genentech, and Sanofi/Aventis. FS reports research grants (all institutional) from Astellas, AstraZeneca, BMS, Janssen, Merck, Myovant, Novartis, Pfizer, and Sanofi; consulting fees from Astellas, AstraZeneca, Janssen, Merck, Myovant, Novartis, Pfizer, and Sanofi; honoraria from Astellas, AstraZeneca, Janssen, Merck, Novartis, Pfizer, and Sanofi; advisory board fees from Astellas, Bayer, BMS, Janssen, Myovant, Novartis, and Pfizer; and local PI nonfinancial interests (all institutional) from Amgen, Astellas, Bayer, BMS, Janssen, Novartis, Pfizer, and Sanofi. M-OG reports trial funding and medical writing funding from BMS, research funding (institutional) from BMS and Intuitive Surgical; consulting fees from Astellas Pharma, AstraZeneca, Bayer Vital, BMS, Eisai, EUSA Pharma, Ipsen, Merck Serono, MSD, Pfizer, Roche Pharma AG, and Takeda; honoraria from Astellas Pharma, AstraZeneca, BMS, EUSA Pharma, Ipsen, Merck Serono, MSD, and Pfizer; and travel expenses from BMS and Merck Serono. DRS has no competing interest to report. AJA reports research funding and writing grant (institutional) from BMS; consulting fees from Astellas, AstraZeneca, Bayer, BMS, Dendreon, Exelixis, Forma, Janssen, Merck, Myovant, Novartis/AAA, and Pfizer; advisory board fees from AstraZeneca, Bayer, Dendreon, Merck, Myovant, Novartis/AAA, and Pfizer; local PI nonfinancial interests (institutional) from Amgen, Bayer, BeiGene, Merck, Forma, and AstraZeneca; coordinating PI nonfinancial interests (institutional) from Astellas, BMS, Janssen, and Pfizer; and steering committee member nonfinancial interests (institutional) from Dendreon. PB reports employment from and stock ownership in BMS. NPA reports employment from and stock ownership in BMS. KU-K reports employment from and stock ownership in BMS at the time of the study. KU-K is now employed by BioNTech US. XW reports employment from and stock ownership in BMS at the time of the study, and stock ownership in AstraZeneca. XW is no longer employed by BMS. JL reports employment from and stock ownership in BMS. AL reports employment from and stock ownership in Clovis Oncology. RKP reports research funding (institutional) from Janssen and Pharmacyclics; speakers bureau fees from AstraZeneca, Genentech/Roche, and Sanofi; advisory board fees from Bayer, BMS, Dendreon, EMD Serono, Genomic Health, Janssen, Jounce, and Pfizer; PI nonfinancial interests from BMS, ESSA, Janssen, Merck, and Pfizer/EMD Serono; steering committee member nonfinancial interests from BMS; and licensed technology to Tempus Labs.

Patient consent for publication Not applicable.

Ethics approval The CheckMate 9KD study protocol was approved by an institutional review board or independent ethics committee at each site before activation. The study was conducted in accordance with consensus ethical principles derived from international guidelines including the Declaration of Helsinki, Council for International Organizations of Medical Sciences, and Good Clinical Practice, as defined by the International Conference on Harmonisation. All patients provided written informed consent. Participants gave informed consent to participate in the study before taking part.

Provenance and peer review Not commissioned; externally peer reviewed.

Data availability statement Data are available upon reasonable request. Bristol Myers Squibb's policy on data sharing may be found online at <https://www.bms.com/researchers-and-partners/independent-research/data-sharing-request-process.html>.

Supplemental material This content has been supplied by the author(s). It has not been vetted by BMJ Publishing Group Limited (BMJ) and may not have been peer-reviewed. Any opinions or recommendations discussed are solely those of the author(s) and are not endorsed by BMJ. BMJ disclaims all liability and responsibility arising from any reliance placed on the content. Where the content includes any translated material, BMJ does not warrant the accuracy and reliability of the translations (including but not limited to local regulations, clinical guidelines, terminology, drug names and drug dosages), and is not responsible for any error and/or omissions arising from translation and adaptation or otherwise.

Open access This is an open access article distributed in accordance with the Creative Commons Attribution Non Commercial (CC BY-NC 4.0) license, which permits others to distribute, remix, adapt, build upon this work non-commercially, and license their derivative works on different terms, provided the original work is properly cited, appropriate credit is given, any changes made indicated, and the use is non-commercial. See <http://creativecommons.org/licenses/by-nc/4.0/>.

ORCID iDs

Karim Fizazi <http://orcid.org/0000-0002-6068-9474>

REFERENCES

- 1 Parker C, Castro E, Fizazi K, *et al*. Prostate cancer: ESMO clinical practice guidelines for diagnosis, treatment and follow-up. *Ann Oncol* 2020;31:1119–34.
- 2 Cornford P, van den Bergh RCN, Briers E, *et al*. EAU-EANM-ESTRO-ESUR-SIOG guidelines on prostate cancer. Part II-2020 update: treatment of relapsing and metastatic prostate cancer. *Eur Urol* 2021;79:263–82.
- 3 National Comprehensive Cancer Network (NCCN). *Clinical practice guidelines in oncology: prostate cancer*. Version 1, 2022.
- 4 Karzai F, VanderWeele D, Madan RA, *et al*. Activity of durvalumab plus olaparib in metastatic castration-resistant prostate cancer in men with and without DNA damage repair mutations. *J Immunother Cancer* 2018;6:141.
- 5 Graff JN, Beer TM, Alumkal JJ, *et al*. A phase II single-arm study of pembrolizumab with enzalutamide in men with metastatic castration-resistant prostate cancer progressing on enzalutamide alone. *J Immunother Cancer* 2020;8:e000642.
- 6 Yu EY, Piulats Rodriguez JMM, Gravis G, *et al*. Pembrolizumab (pembro) plus olaparib in patients (PTS) with docetaxel-pretreated metastatic castration-resistant prostate cancer (mCRPC): KEYNOTE-365 cohort a efficacy, safety, and biomarker results. *JCO* 2020;38:5544.
- 7 Appleman LJ, Kolinsky MP, Berry WR, *et al*. KEYNOTE-365 cohort B: pembrolizumab (pembro) plus docetaxel and prednisone in abiraterone (abi) or enzalutamide (enza)-pretreated patients with metastatic castration-resistant prostate cancer (mCRPC)—new data after an additional 1 year of follow-up. *J Clin Oncol* 2021;39:10.
- 8 Topalian SL, Hodi FS, Brahmer JR, *et al*. Safety, activity, and immune correlates of anti-PD-1 antibody in cancer. *N Engl J Med* 2012;366:2443–54.
- 9 Hansen AR, Massard C, Ott PA, *et al*. Pembrolizumab for advanced prostate adenocarcinoma: findings of the KEYNOTE-028 study. *Ann Oncol* 2018;29:1807–13.
- 10 Antonarakis ES, Piulats JM, Gross-Goupil M, *et al*. Pembrolizumab for treatment-refractory metastatic castration-resistant prostate cancer: multicohort, open-label phase II KEYNOTE-199 study. *J Clin Oncol* 2020;38:395–405.
- 11 Petrylak DP, Loriot Y, Shaffer DR, *et al*. Safety and clinical activity of atezolizumab in patients with metastatic castration-resistant prostate cancer: a phase I study. *Clin Cancer Res* 2021;27:3360–9.
- 12 Kwon ED, Drake CG, Scher HI, *et al*. Ipilimumab versus placebo after radiotherapy in patients with metastatic castration-resistant prostate cancer that had progressed after docetaxel chemotherapy (CA184-043): a multicentre, randomised, double-blind, phase 3 trial. *Lancet Oncol* 2014;15:700–12.
- 13 Beer TM, Kwon ED, Drake CG, *et al*. Randomized, double-blind, phase III trial of ipilimumab versus placebo in asymptomatic or minimally symptomatic patients with metastatic chemotherapy-naïve castration-resistant prostate cancer. *J Clin Oncol* 2017;35:40–7.
- 14 Fizazi K, Drake CG, Beer TM, *et al*. Final analysis of the ipilimumab versus placebo following radiotherapy phase III trial in postdocetaxel metastatic castration-resistant prostate cancer identifies an excess of long-term survivors. *Eur Urol* 2020;78:822–30.
- 15 Boudadi K, Suzman DL, Anagnostou V, *et al*. Ipilimumab plus nivolumab and DNA-repair defects in AR-V7-expressing metastatic prostate cancer. *Oncotarget* 2018;9:28561–71.
- 16 Sharma P, Pachynski RK, Narayan V, *et al*. Nivolumab plus ipilimumab for metastatic castration-resistant prostate cancer: preliminary analysis of patients in the CheckMate 650 trial. *Cancer Cell* 2020;38:489–99.
- 17 de Bono J, Mateo J, Fizazi K, *et al*. Olaparib for metastatic castration-resistant prostate cancer. *N Engl J Med* 2020;382:2091–102.
- 18 Abida W, Campbell D, Patnaik A, *et al*. Non-BRCA DNA damage repair gene alterations and response to the PARP inhibitor rucaparib in metastatic castration-resistant prostate cancer: analysis from the phase II TRITON2 study. *Clin Cancer Res* 2020;26:2487–96.
- 19 Abida W, Patnaik A, Campbell D, *et al*. Rucaparib in men with metastatic castration-resistant prostate cancer harboring a BRCA1 or BRCA2 gene alteration. *J Clin Oncol* 2020;38:3763–72.
- 20 Stewart RA, Pilié PG, Yap TA. Development of PARP and immune-checkpoint inhibitor combinations. *Cancer Res* 2018;78:6717–25.
- 21 Wu Z, Cui P, Tao H, *et al*. The synergistic effect of PARP inhibitors and immune checkpoint inhibitors. *Clin Med Insights Oncol* 2021;15:117955492199628.
- 22 Robillard L, Nguyen M, Loehr A. Preclinical evaluation of the PARP inhibitor rucaparib in combination with PD-1 and PD-L1 inhibition in a syngeneic BRCA1 mutant ovarian cancer model. in: Proceedings of the American Association for Cancer Research Annual Meeting 2017; 2017 Apr 1–5; 374 Washington, DC. Philadelphia (PA): AACR. *Cancer Res* 2017;77:Abstract 3650.
- 23 Jiao S, Xia W, Yamaguchi H, *et al*. PARP inhibitor upregulates PD-L1 expression and enhances cancer-associated immunosuppression. *Clin Cancer Res* 2017;23:3711–20.
- 24 Shen J, Zhao W, Ju Z, *et al*. PARPi triggers the STING-dependent immune response and enhances the therapeutic efficacy of immune checkpoint blockade independent of BRCAness. *Cancer Res* 2019;79:311–9.
- 25 Wang Z, Sun K, Xiao Y, *et al*. Niraparib activates interferon signaling and potentiates anti-PD-1 antibody efficacy in tumor models. *Sci Rep* 2019;9:1853.
- 26 Fizazi K, González Mella P, Castellano D, *et al*. Nivolumab plus docetaxel in patients with chemotherapy-naïve metastatic castration-resistant prostate cancer: results from the phase II CheckMate 9KD trial. *Eur J Cancer* 2022;160:61–71.
- 27 Clopper CJ, Pearson ES. The use of confidence or fiducial limits illustrated in the case of the binomial. *Biometrika* 1934;26:404–13.
- 28 Kaplan EL, Meier P. Nonparametric estimation from incomplete observations. *J Am Stat Assoc* 1958;53:457–81.
- 29 Klein JP, Moeschberger ML. *Survival Analysis: Techniques for Censored and Truncated Data*. New York: Springer-Verlag, 1997.
- 30 Yu E, Piulats JM, Gravis G, *et al*. 73P. Association between homologous recombination repair mutations and response to pembrolizumab (pembro) plus olaparib (ola) in metastatic castration-resistant prostate cancer (mCRPC): KEYNOTE-365 cohort A biomarker analysis. *Ann Oncol* 2021;32:S387–406.
- 31 Mateo J, Porta N, Bianchini D, *et al*. Olaparib in patients with metastatic castration-resistant prostate cancer with DNA repair gene aberrations (TOPARP-B): a multicentre, open-label, randomised, phase 2 trial. *Lancet Oncol* 2020;21:162–74.
- 32 de Bono JS, Mehra N, Scagliotti GV, *et al*. Talazoparib monotherapy in metastatic castration-resistant prostate cancer with DNA repair alterations (TALAPRO-1): an open-label, phase 2 trial. *Lancet Oncol* 2021;22:1250–64.
- 33 Merck. Merck announces KEYLYNK-010 trial evaluating KEYTRUDA® (pembrolizumab) in combination with LYNPARZA® (olaparib) in patients with metastatic castration-resistant prostate cancer to stop for fertility, 2022. Available: <https://www.merck.com/news/merck-announces-keylynk-010-trial-evaluating-keytruda-pembrolizumab-in-combination-with-lynparza-olaparib-in-patients-with-metastatic-castration-resistant-prostate-cancer-to-stop-for-f>
- 34 Subudhi SK, Vence L, Zhao H, *et al*. Neoantigen responses, immune correlates, and favorable outcomes after ipilimumab treatment of patients with prostate cancer. *Sci Transl Med* 2020;12:eaaz3577.
- 35 McGrail DJ, Pilié PG, Rashid NU, *et al*. High tumor mutation burden fails to predict immune checkpoint blockade response across all cancer types. *Ann Oncol* 2021;32:661–72.
- 36 Larkin J, Chiarion-Sileni V, Gonzalez R, *et al*. Combined nivolumab and ipilimumab or monotherapy in untreated melanoma. *N Engl J Med* 2015;373:23–34.
- 37 Ready NE, Ott PA, Hellmann MD, *et al*. Nivolumab monotherapy and nivolumab plus ipilimumab in recurrent small cell lung cancer: results from the CheckMate 032 randomized cohort. *J Thorac Oncol* 2020;15:426–35.
- 38 Yu E, Piulats JM, Gravis G, *et al*. 612P. Pembrolizumab (pembro) plus olaparib in patients with docetaxel-pretreated metastatic castration-resistant prostate cancer (mCRPC): update of KEYNOTE-365 cohort A with a minimum of 11 months of follow-up for all patients. *Ann Oncol* 2021;32:S652–3.