

## Identification of cellulolytic lactic acid bacteria from the intestines of laying hens given AKBISprob based on 16S ribosomal ribonucleic acid gene analysis

Nurliana Nurliana<sup>1</sup>, Baharuddin Halim Siregar<sup>2</sup>, Wahyu Eka Sari<sup>1,3</sup>, Teuku Zahrial Helmi<sup>4</sup> and Sugito Sugito<sup>5</sup>

1. Laboratory of Veterinary Public Health, Faculty of Veterinary Medicine, Universitas Syiah Kuala, Banda Aceh, Indonesia; 2. Study Program of Veterinary Education, Faculty of Veterinary Medicine, Universitas Syiah Kuala, Banda Aceh, Indonesia; 3. Laboratory of Research, Faculty of Veterinary Medicine, Universitas Syiah Kuala, Banda Aceh, Indonesia; 4. Laboratory of Biochemical, Faculty of Veterinary Medicine, Universitas Syiah Kuala, Banda Aceh, Indonesia; 5. Laboratory of Clinic, Faculty of Veterinary Medicine, Universitas Syiah Kuala, Banda Aceh, Indonesia.

**Corresponding author:** Nurliana Nurliana, e-mail: [nurliana.nuna@unsyiah.ac.id](mailto:nurliana.nuna@unsyiah.ac.id)

**Co-authors:** BHS: [baharuddinhalim97@gmail.com](mailto:baharuddinhalim97@gmail.com), WES: [wahyueka\\_sari@unsyiah.ac.id](mailto:wahyueka_sari@unsyiah.ac.id), TZH: [zahrial\\_fkh@unsyiah.ac.id](mailto:zahrial_fkh@unsyiah.ac.id), SS: [sugitofkhunsyiah@unsyiah.ac.id](mailto:sugitofkhunsyiah@unsyiah.ac.id)

**Received:** 07-12-2021, **Accepted:** 12-05-2022, **Published online:** 14-07-2022

**doi:** [www.doi.org/10.14202/vetworld.2022.1650-1656](https://doi.org/10.14202/vetworld.2022.1650-1656) **How to cite this article:** Nurliana N, Siregar BH, Sari WE, Helmi TZ, Sugito S (2022) Identification of cellulolytic lactic acid bacteria from the intestines of laying hens given AKBISprob based on 16S ribosomal ribonucleic acid gene analysis, *Veterinary World*, 15(7): 1650–1656.

### Abstract

**Background and Aim:** Supplementation of AKBISprob (developed in a previous study) in feed can improve production efficiency and poultry health, especially laying hens. In addition, it can also increase cellulolytic lactic acid bacteria (LAB) in chicken intestines, but these bacteria are still unknown; thus, they need to be identified. This study aimed to identify cellulolytic LAB in the intestines of laying hens administered AKBISprob based on 16S ribosomal ribonucleic acid (16S rRNA) gene analysis.

**Materials and Methods:** The samples used in this study were 13 LAB isolates from the intestines of laying hens that were given AKBISprob 4%. Cellulolytic LAB DNA was isolated and 16S rRNA gene was amplified by polymerase chain reaction, followed by sequencing, bioinformatics analysis, and phylogenetic tree construction.

**Results:** From 10 cellulolytic LAB isolates with a clear zone of >6 mm, four were selected and their DNA was amplified with BaCF and UniB primers ~1500 bp DNA fragments. Of these, the P31H62 isolate was genetically close to *Enterococcus hirae* strain 1-1X-16 with 92.90% maximum identity, the P33S52 isolate had homology with *Enterococcus mundtii* strain ZU 26 with 96.76% maximum identity, and the P33S62 isolate was closely related to *E. hirae* strain SJ3 with 72.96% maximum identity. The phylogenetic tree revealed that the cellulolytic LAB isolates P31H62 and P33S52 were in one cluster closely related to the genus *Enterococcus*.

**Conclusion:** This study suggests that the isolates P31H62, P33S62, and P33S52 from the intestines of laying hens administered 4% AKBISprob are cellulolytic LAB belonging to the genus *Enterococcus*.

**Keywords:** 16S ribosomal ribonucleic acid, AKBISprob, *Enterococcus*, phylogenetic tree, polymerase chain reaction.

### Introduction

Lactic acid bacteria (LAB) are a group of Gram-positive bacteria that are round or rod-shaped and catalase-negative, do not form spores [1], and can ferment sugars or carbohydrates to produce large amounts of lactic acid [2]. Some active metabolites produced by LAB are lactic acid, ethanol, hydrogen peroxide, and bacteriocin [3, 4]. LAB are generally recognized as safe [2]; thus, they can be used as probiotic agents. According to Bairagi *et al.* [5], probiotic bacteria have amylolytic, proteolytic, lipolytic, and cellulolytic activities. LAB produce not only lactic acid and bacteriocin but also several extracellular enzymes, such as

amylase, pectinase,  $\beta$ -glucosidase, and cellulase [6]. Chickens have difficulty absorbing feed containing crude fiber, such as cellulose; thus, the presence of cellulolytic bacteria in their intestines is important for digestion. The use of probiotics or prebiotics together with live *Salmonella* vaccination is an excellent way to reduce the adverse effects of harmful bacteria and improve the growth performance of broilers [7].

Cellulolytic bacteria can degrade cellulose-containing substrates. Cellulolytic bacteria can convert cellulose into sugar, which can then be used as a carbon source and an energy source for metabolism and growth [8, 9]. Cellulose-producing microbes from bacteria have an advantage over fungi in that they grow faster and thus require less time to produce cellulase [10]. Research on cellulolytic bacteria has been widely conducted, and the findings have been applied in various fields, including animal husbandry and industry. In animal husbandry, the use of cellulolytic *Acetobacter liquefaciens* species effectively increases daily weight gain and decreases animal

Copyright: Nurliana, *et al.* Open Access. This article is distributed under the terms of the Creative Commons Attribution 4.0 International License (<http://creativecommons.org/licenses/by/4.0/>), which permits unrestricted use, distribution, and reproduction in any medium, provided you give appropriate credit to the original author(s) and the source, provide a link to the Creative Commons license, and indicate if changes were made. The Creative Commons Public Domain Dedication waiver (<http://creativecommons.org/publicdomain/zero/1.0/>) applies to the data made available in this article, unless otherwise stated.

feed conversion rates [11]. *Lactobacillus* spp., such as *Lactobacillus plantarum* [12] and *Levilactobacillus brevis* [13], are known to have cellulolytic activity. One way to increase LAB population in chicken intestines is by supplementing their feed with symbiotics [14]. Nurliana *et al.* [15] developed an alternative modification of fermented poultry feed, which is a mixture of mule pulp and palm kernel cake with the addition of *Aspergillus niger*-type microbes called AKBISprob. The addition of AKBISprob at a dose of 4% in feed can improve production efficiency and health in poultry, specifically, laying hens and broilers. AKBISprob supplementation can also increase cellulolytic LAB in chicken intestines [15], but the species of cellulolytic LAB are still unknown; thus, they need to be identified.

Bacterial identification can be made based on phenotypic and genetic characteristics [16, 17]. By sorting bases from bacterial DNA, genetic methods for bacterial identification and characterization provide fast and accurate results [18]. The genetic and molecular identification of bacteria is generally conducted using 16S ribosomal ribonucleic acid (16S rRNA). The 16S rRNA gene is commonly used for identifying prokaryotic species through polymerase chain reaction (PCR) [19–21]. PCR can duplicate small amounts of target DNA, even if a single strand of DNA is used. PCR is a very sensitive, specific, and fast method [22].

Based on this background, this study aimed to identify cellulolytic LAB species in chicken intestines treated with AKBISprob based on 16S rRNA gene analysis using a PCR.

## Materials and Methods

### Ethical approval

There is no need for ethical approval because this study did not use chicken as the sample but used lactic acid bacteria isolates that had been collected previously.

### Study period and location

This research was conducted from January to June 2019 at the Laboratory of Veterinary Public Health and Laboratory of Research, Faculty of Veterinary Medicine, Universitas Syiah Kuala. The sequencing process was carried out at 1<sup>st</sup> BASE Laboratories, Malaysia.

### Research design

This research was conducted in a laboratory in a series of steps. The first step was to select cellulolytic LAB on De Man, Rogosa and Sharpe (MRS) agar (Oxoid Ltd., United Kingdom) plus carboxymethylcellulose (CMC) (Oxoid Ltd). The next step was DNA isolation, followed by PCR amplification of the 16S rRNA gene, sequencing, and homology analysis of DNA sequences. The final step was to construct a phylogenetic tree.

### Screening of cellulolytic LAB

LAB isolates stored in MRS broth (Oxoid Ltd) were centrifuged for 3 min at 14,000–16,000× *g*.

Cellulase detection was based on the method proposed by Nurliana *et al.* [23]. The agar diffusion method employed 0.7% MRS agar (Oxoid Ltd) and 0.5% CMC in distilled water, which was autoclaved at 121°C for 15 min. The media was poured into a Petri dish and allowed to solidify, and then the blank disk paper was dipped in 25 µL of the LAB isolate supernatant and left for 15 minutes. Next step, the disk paper dipped with the LAB supernatant was placed on top of the solid media and the medium was incubated for 24 h at 37°C. On observation of cellulolytic activity, the medium was soaked for 15 min with 0.1% Congo red (Merck, Germany) solution in 70% alcohol, after which 1 M NaCl was poured for 15 min. Isolates with clear zones indicated the presence of cellulolytic processes by LAB. LAB isolates with the four largest clear zones were transferred to MRS broth for further examination.

### DNA isolation of cellulolytic LAB

Genomic DNA isolation of cellulolytic LAB was performed using the Presto™ Mini gDNA Bacteria Kit (Geneaid Ltd., Taiwan). Then, 1.5 mL ( $1 \times 10^9$  cells/mL) of MRS broth was transferred into a 1.5 mL tube, and the microtubes were centrifuged for 1 min at 14,000–16,000× *g*. The supernatant was discarded, leaving behind the pellets in the tube. Gram-positive buffer (200 µL) with lysozyme (0.8 mg/mL) was added to the pellets and homogenized with a vortex. Proteinase K (20 µL) was added, and the solution was incubated for 10 min at 60°C and inverted every 3 min. The cell lysis process included the addition of Gram-positive buffer (200 µL) to the sample, homogenization for 10 s, and incubation at 70°C for 10 min. The solution was inverted every 3 min. The cell-binding process involved the addition of absolute ethanol (200 µL) followed by homogenization. The GD column was moved into a 2 mL tube and centrifuged at 14,000–16,000× *g* for 2 min, and the supernatant was discarded. Then, the GD column was transferred to a new 2 mL collection tube. The washing process included the addition of W1 buffer (400 µL) and centrifugation for 3 min, after which the supernatant was discarded. Wash buffer (600 µL) and ethanol mixture were added, after which the solution was centrifuged at 14,000–16,000× *g* for 3 min and the supernatant was discarded. The GD column was transferred to a new 2 mL tube, and elution buffer (30 µL) was added (heated at 70°C). The solution was incubated at room temperature (27–29°C) for 3–5 min and centrifuged at 14,000–16,000× *g* for 1 min. The tube with DNA was stored at –20°C. The final step was to isolate DNA through electrophoresis using a 1% agarose gel for 60 min at 60 V in comparison with the samples inserted into the electrophoresis well (1 µL loading dye/5 µL sample). After the migration process was complete, agarose gel was visualized using GelDoc (Bio-Rad, USA). The success of the DNA isolation was characterized by the presence of good-quality DNA bands on the electrophoresis gel (Bio-Rad).

### PCR amplification of the 16S rRNA gene

The PCR mixture contained 3.5 µL nuclease-free water, 12.5 µL KAPA2G Fast ReadyMix, 2 µL of 10 µM forward primer (BaCF), 2 µL of 10 µM reverse primer (UniB), and 5 µL DNA templates, for a total volume of 25 µL inserted into the PCR tube. PCR amplification included pre-denaturation at 94°C for 3 min, denaturation at 94°C for 1 min, annealing at 57°C for 1 min, extension at 72°C for 1 min, and post-extension at 72°C for 5 min. PCR products were electrophoresed on a 1% agarose gel for 60 min at 60 V, and a single DNA band was observed on GelDoc to ensure that DNA fragments were amplified at a size of ~1500 bp.

### Sequencing, bioinformatics analysis, and phylogenetic tree construction

The sequencing process was performed using the commercial services of 1<sup>st</sup> BASE (Malaysia). The nucleotide sequence results were compared with GenBank using BLASTN from the National Center for Biotechnology Information (NCBI) (<http://www.ncbi.nih.gov>). Alignment of DNA sequences to classify genes of the same size and phylogenetic tree construction of 16S rRNA genes were conducted using MEGA 5.05 [24] based on the neighbor-joining tree method, with a bootstrap value of 1000×.

## Results

### Screening of cellulolytic LAB

The formation of a clear zone around the paper disk on MRS agar plus CMC indicates that LAB are cellulolytic. A semi-quantitative analysis of cellulolytic bacterial activity was performed by measuring the clear zones around the colony. The clear zones of 13 LAB isolates from the intestines of laying hens were measured (Table-1).

The measurement results of the clear zones of the 13 tested LAB isolates indicated that 10 LAB isolates had a cellulolytic activity with different clear zone diameters. Based on the clear zone diameters of 10 cellulolytic LAB isolates, four selected isolates with the largest clear zone diameter were obtained: P31H54 with a diameter of 12.15 mm, P31H62 with 7.86 mm, P33S52 with 6.27 mm, and P33S62 with

**Table-1:** Clear zone diameters of 13 lactic acid bacteria isolates at MRSa 0.7% and CMC 0.5%.

Isolates	Diameters of clear zone (mm)
P11H62	4.18
P12H52	1.86
P12S73	4.75
P21H71	1.86
P23H31	3.35
P31H54	12.15
P31H62	7.86
P31S51	5.97
P31S71	-
P31S72	-
P31S51	-
P33S52	6.27
P33S62	6.28

6.28 mm. Identification of 16S rRNA genes from cellulolytic LAB isolates was performed. The P31H54 isolate had the highest cellulolytic activity compared with other isolates, indicating that P31H54 had the greatest ability to digest fiber.

### Morphological characteristics of cellulolytic LAB

Cellulolytic LAB were identified by macroscopic and microscopic morphological observations. Size, shape, elevation, edges, and color were among the examined morphological features of the cellulolytic LAB colonies (Table-2). Macroscopically, colonies of the four cellulolytic LAB isolates were round and had a convex elevation, a smooth or flat texture, colored colonies (creamy or white color), and an average size of 2 mm. Microscopically, the P31H54 isolates were rod or bacillus shaped, while the P31H62, P33S52, and P33S62 isolates were short rod or coccobacillus shaped. The Gram staining results are presented in Figure-1.

### DNA genome of cellulolytic LAB

The cellulolytic LAB genome isolation results obtained from the four samples are presented in Figure-2. The DNA band formation in agarose gels showed the migration pathway of DNA with varying band thicknesses. As a result, the DNA samples had varying qualities and quantities.

### 16S rRNA gene of cellulolytic LAB

Based on the amplification results, the DNA isolate sample is presented in Figure-3. The obtained results are parallel DNA bands on the marker at ~1500 bp. Using BaCF and UniB primers, the four cellulolytic LAB isolates had successfully amplified 16S rRNA genes, with expected DNA fragment sizes of ~1500 bp.

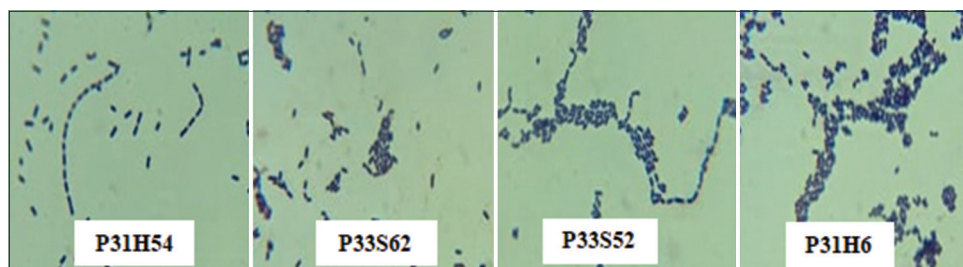
### Bioinformatics analysis and genetic relationships of the 16S rRNA gene of cellulolytic LAB

Based on the BLAST analysis of 16S rRNA partial sequences from four parallel isolates, the P31H62 isolate had similarities with *Enterococcus hirae* strain 1-1X-16 (92.90%), the P33S52 isolate had similarities with *Enterococcus mundtii* strain ZU 26 (96.76%), the P31H54 isolate had similarities with *Bacillus mycoides* strain HB55 (91.03%), and the P33S62 isolate had similarities with *E. hirae* strain SJ3 (72.96%; Table-3). The P31H62, P33S52, and P31H54 isolates had identity values of <97% with an E = 0.0, whereas the P33S62 isolate had an E > 0. The resulting E = 0 indicated a sequence of homologous samples with GenBank sequences. The most similar GenBank sequences were characterized by the same max score and total score; the query coverage was close to 100%, the E-value was close to 0.0, and the max identity was close to 100%.

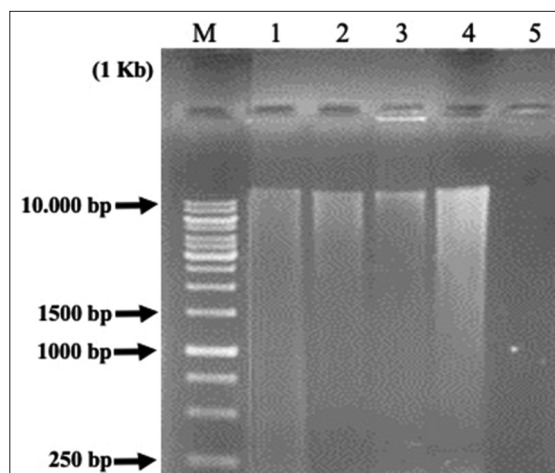
**Table-2:** Macroscopic description of morphological colonies of cellulolytic lactic acid bacteria isolates.

Isolates	Size (mm)	Elevation	Edge	Color
P31H54	2.05	Convex	Slippery	Cream
P31H62	2.23	Convex	Slippery	Cream
P33S52	2.02	Convex	Slippery	Cream
P33S62	2.07	Convex	Slippery	Cream

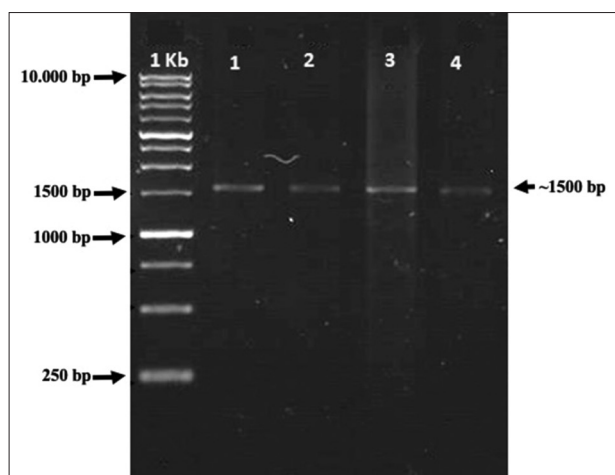




**Figure-1:** Gram staining results of four lactic acid bacteria 1000× cellulolytic isolates.



**Figure-2:** Visualization results of cellulolytic lactic acid bacteria DNA isolation on the 1% agarose gel. 1 Kb = Marker; 1 = P31H62; 2 = P33S52; 3 = P33S62; and 4 = P31H54.



**Figure-3:** Polymerase chain reaction amplification of 16S ribosomal ribonucleic acid gene from lactic acid bacteria cellulolytic isolates ~ 1500 bp. 1 Kb (Marker); 1 = P31H62; 2 = P33S52; 3 = P33S62; and 4 = P31H54.

Based on the phylogenetic tree construction, the P31H62, P33S52, and P33S62 isolates were clustered together with the genus *Enterococcus*, whereas the P31H54 isolate was in Cluster II, which was closely related to the genus *Bacillus* (Figure-4), a group of Gram-positive bacteria. But when compared to outgroup cluster Gram-negative bacteria (*Escherichia coli*), the four isolates (P31H62, P33S52, P33S62, and P31H54) were separated from them.

**Table-3:** Similarity of cellulolytic lactic acid bacteria 16S ribosomal ribonucleic acid gene sequences with GenBank.

Isolates	References strain (GenBank)	% Similarity	Accession number
P31H62	<i>Enterococcus hirae</i> strain 1-1X-16	92.90	CP015516.1
P33S52	<i>Enterococcus mundtii</i> strain ZU 26	96.76	AB548881.1
P33S62	<i>Enterococcus hirae</i> strain SJ3	72.96	MG966462.1
P31H54	<i>Bacillus mycooides</i> strain HB55	91.03	JX856133.1

Based on the phylogenetic tree construction of 16S rRNA genes from the four cellulolytic LAB isolates aligned with the isolates found in GenBank, the main branch with a bootstrap value of 100% was formed, namely, the *Bacillus* genus branch cluster with the P31H54 isolate. This demonstrated that the two branches were consistent. The P31H62 and P33S52 isolates had bootstrap values of >70% and 93%, respectively, with the genus *Enterococcus*. Although the P33S62 isolate was located far from the *Enterococcus* genus cluster, this was in accordance with the BLAST analysis result of the isolate, which was equal to 72.98%.

### Discussion

Cellulolytic LAB screening is characterized by a clear zone formation around the paper disk on MRS agar plus CMC. The addition of 0.5% CMC to MRS agar can be used as a selective medium for cellulolytic LAB [23]. Cellulolytic activity is indicated by the presence of a clear zone on CMC agar medium after being given Congo red dye. This is because no interaction between Congo red and the polysaccharides in the medium occurs. According to Gupta *et al.* [25], clear zones form on the medium soaked with 0.1% Congo red because cellulase hydrolyzes cellulose in the medium into simple compounds, namely, cellobiose, which is then simplified into two glucose molecules. Warly *et al.* [26] stated that depending on the genes present and the carbon source used, each cellulolytic bacterium can produce different cellulase complexes. The ability of each bacterial species to hydrolyze the CMC substrate to produce different cellulases accounts for the difference in the clear zone of each isolate [27]. CMC is the best substrate for inducing the synthesis of extracellular cellulolytic enzymes. Cellulolytic bacteria, which



tree method with a 1000× bootstrap on MEGA 5.05. According to Telles *et al.* [36], the neighbor-joining tree method is employed for phylogenetic tree reconstruction by calculating the changes in DNA bases in each organism (evolutionary distance) as visualized by the length of the branch formed. Bootstrap values at branching indicate the accuracy of branching values in phylogenetic trees, with a calculation of 1000 randomizations [37]. A bootstrap value of 100% at branching also shows that the branching is consistent [33]. Bootstrap values of ≥ 95% indicate that the branching topology is accurate and consistent or that it will not change even if performed using other phylogenetic tree preparation methods [38]. According to Coenye and Vandamme [39], a bootstrap value of >70% indicates that the branching is significant and permanent. Low bootstrap values indicate that branching will very likely change [39]. Based on phylogenetic analysis, the three isolates classified as genus *Enterococcus*, namely, P31H62, P33S62, and P33H62, were identified as LAB. The P31H54 isolate belonged to the genus *Bacillus*. LAB belong to the phylum Firmicutes, class Bacilli, order Lactobacillales, and family Lactobacillaceae and consists of 10 genera, namely, *Lactobacillus*, *Aerococcus*, *Leuconostoc*, *Pediococcus*, *Streptococcus*, *Weissella*, *Carnobacterium*, *Tetrococcus*, *Tetragenococcus*, and *Bifidobacterium* [40].

### Conclusion

This study demonstrated that the cellulolytic LAB isolates P31H62, P33S62, and P33S52 from the intestines of laying hens administered 4% AKBISprob belonged to the genus *Enterococcus*. The isolates had homology with *E. hirae* strain 1-1X-16, *E. mundtii* strain ZU 26, and *E. hirae* strain SJ3. Further study is necessary to create a bacterial consortium from the three isolates that have been identified by the LAB species as probiotic candidates in animal feed.

### Authors' Contributions

NN, WES, and TZH: Conceptualized and designed the study. BHS, WES, and NN: Carried out the experiment. WES: Analysis of the data. NN, WES, BHS, TZH, and SS: Drafted and revised the manuscript. All authors have read and approved the final manuscript.

### Acknowledgments

We thank Laboratory of Veterinary Public Health and Laboratory of Research, Faculty of Veterinary Medicine, Universitas Syiah Kuala, for providing the necessary facilities for the study. This study was funded by a project from Universitas Syiah Kuala, Ministry of Education and Culture, Research and Technology in accordance with the Assignment Agreement Research Implementation for Associate Professors for the Fiscal Year 2020 (Grant no. 266/UN11/SPK/PNBP/2020).

### Competing Interests

The authors declare that they have no competing interests.

### Publisher's Note

Veterinary World remains neutral with regard to jurisdictional claims in published institutional affiliation.

### References

- Ghosh, A.S., Selvam, D.G., Neethu, C.S. Saramma, A.V. and Hatha, A.A.M. (2013) Diversity and antimicrobial activity of lactic acid bacteria from the gut of marine fish *rastrelliger* and human pathogens. *J. Mar. Biol. Assoc. India*, 55(2): 22–77.
- Khalid, K. (2011) An overview of lactic acid bacteria. *Int. J. Biosci.*, 1(3): 1–13.
- Gaggia, F., Mattarelli, P. and Biavati, B. (2010) Review: Probiotics and prebiotics in animal feeding for safe food production. *Int. J. Food. Microbiol.*, 141(1): 15–28.
- Ibrahim, A., Fridayanti, A. and Delvia, F. (2015) Isolation and identification of lactic acid bacteria (LAB) from mangoes (*Mangifera indica* L.). *J. Ilmiah Manuntung.*, 1(2): 159–163.
- Bairagi, A., Ghosh, K.S., Sen, S.K. and Ray, A.K. (2002) Enzyme producing bacterial flora isolated from fish digestive tracts. *Aquac. Int.*, 10(2): 109–121.
- Krabi, R.E., Assamoil, A.A., Ehon, F.A. and Niamke, S.L. (2015) Screening of lactic acid bacteria as a potential starter for the production of Attieke, a fermented cassava food. *J. Food Eng.*, 1(15): 21–29.
- El-Shall, N.A., Awad, A.M., El-Hack, M.E.A., Naiel, M.A., Othman, S.I., Allam, A.A. and Sedeik, M.E. (2019) The simultaneous administration of a probiotic or prebiotic with live *Salmonella* vaccine improves growth performance and reduces fecal shedding of the bacterium in *Salmonella*-challenged broilers. *Animals*, 10(1): 70.
- Mulyasari, M., Widanarni, W., Suprayudi, M.A., Junior, M.Z. and Sunarno, M.T.D. (2015) Selection and identification of cassava (*Manihot esculenta*) leaf-degrading cellulolytic bacteria isolated from the digestive tract of carp (*Ospchronemus gouramy*). *JPB Kelautan Perikanan*, 10(2): 111–121.
- Murtiyaningsih, H. and Hazmi, M. (2017) Isolation and activity of cellulase enzymes on cellulolytic bacteria from soil waste. *Agritop*, 15(2): 293–308.
- Baharuddin, A.S., Razak, M.N.A., Hock, L.S.H., Ahmad, M.N.A., Abd-Aziz, S., Rahman, A.A., Shah, U.K.M., Hassan, M.A., Sakai, K. and Shirai, Y. (2010) Isolasi and characterization of thermophilic cellulase-producing bacteria from empty bunches-palm oil mill effluent compost. *Am. J. Appl. Sci.*, 7(1): 56–62.
- Soepranianondo, K., Dady, S.N. and Didik, H. (2007) The potential of rice straw ammoniated and fermented using cellulolytic bacteria on dry matter consumption, weight gain and sheep feed conversion. *Media Kedokteran Hewan*, 23(3): 202–205.
- Morais, S., Shterzer, N., Grinberg, I.R., Mathiesen, G., Eijsink, V.G.H., Axelsson, L., Lamed, R., Bayer, E.A. and Mizrahib, I. (2013) Establishment of a simple *Lactobacillus plantarum* cell consortium for cellulase-xylanase synergistic interactions. *J. Appl. Environ. Microbiol.*, 79(17): 5242–5249.
- Utama, C.S., Zuprizal, Z., Hanim, C. and Wihandoyo, W. (2018) Isolation and identification of cellulolytic lactic acid bacteria derived from fermented cabbage juice. *J. Aplikasi Teknol. Pangan*, 7(1): 1–6.
- Dibaji, S.M., Seidavi, A., Asadpour, L. and Silva, F.M.D. (2014) Effect of a synbiotic on the intestinal microflora of chickens. *J. Appl. Poult. Res.*, 23(1): 1–6.
- Nurliana, N., Sugito, S. and Masyitha, D. (2016) Administration of Soybean Pulp and *Aspergillus niger* Fermented Palm Fruit Fiber in Feed to Increase the Productivity of Laying Hens. *Laporan Kemajuan*. Penelitian Hibah Bersaing. Universitas Syiah Kuala, Banda Aceh.
- Garcia, E.F., Luciano, W.A., Xavier, D.E., da Costa, W.C., de Sousa Oliveira, K., Franco, O.L., de Morais Júnior, M.A.,



- Lucena, B.T., Picão, R.C., Magnani, M. and Saarela, M. (2016) Identification of lactic acid bacteria in fruit pulp processing byproducts and potential probiotic properties of selected *Lactobacillus* strains. *Front. Microbiol.*, 7(1371): 1-11.
17. Sari, W.E., Salim, M.N., Ferasyi, T.R., Hambal, M., Vanda, H., Helmi, T.Z., Ritonga, M.Z., Santosa, S.F. and Setiawandi, W.B. (2021) Identification of pathogenic bacteria in snapper fish (*Lutjanus* spp.) from Banda Aceh waters. In: 2<sup>nd</sup> International Conference on Veterinary, Animal, and Environmental Sciences. Atlantis Press, Netherlands. p152–156.
  18. Emerson, D.A., Agulto, L., Liu, H. and Liu, L. (2008) Identifying and characterizing bacteria in an era of genomics and proteomic. *Bioscience*, 58(10): 925–935.
  19. Safika, S., Madayanti, F., Aditiawati, P. and Akhmaloka, A. (2013) Succession culture independent bacterial during manure composting process. *J. Pure Appl. Microbiol.*, 7(13): 269–276.
  20. Sari, W.E., Solihin, D.D. and Lestari, Y. (2014) Identification of endophytic actinomycetes from Indonesian rice plant based on 16S rRNA and nifH genes analyses. *Adv. Environ. Biol.*, 8(7): 2357–2365.
  21. Hambal, M., Admi, M., Safika, S., Sari, W.E., Ferasyi, T.R., Dasrul, D. and Darmawi, D. (2019) Identification of *Staphylococcus* species isolated from preputium of Aceh cattle based on 16S rRNA gene sequences analysis. *Vet. World*, 12(10): 1540.
  22. Tarini, N.M.A., Wahid, M.H., Ibrahim, F., Yasmon, A. and Djauzi, S. (2010) Development of a multiplex-PCR assay for rapid detection of *Candida* spp. *Med. J. Indones.*, 19(2): 83–87.
  23. Nurliana, N., Wajizah, S. and Masyitha, D. (2015) Administration of Soybean Pulp and *Aspergillus niger* Fermented Palm Fruit Fiber in Feed to Increase the Productivity of Laying Hens. *Laporan Penelitian*. Universitas Syiah Kuala, Banda Aceh.
  24. Tamura, K., Peterson, D., Peterson, N., Stecher, G., Nei, M. and Kumar, S. (2011) MEGA5: Molecular evolutionary genetics analysis using maximum likelihood, evolutionary distance, and maximum parsimony methods. *Mol. Biol. Evol.*, 28: 2731–2739.
  25. Gupta, P., Samant, K. and Sahu, A. (2012) Isolation of cellulose-degrading bacteria and determination of their cellulolytic potential. *Int. J. Microbiol.*, 2012: 578925.
  26. Warly, L., Marli, Y. and Riyanto, I. (2019). The activity of cellulose enzyme from indigenous bacteria “*Bacillus* Sp YLB1” as bioactivator. *J. Peternakan Integratif*, 7(2): 10–18.
  27. Sari, M., Agustien, U. and Nurmiati, A. (2012) Screening and characterization of cellulolytic thermophilic bacteria from Sungai Medang hot spring, Kerinci, Jambi. *J. Biol. Univ. Andalas*, 1(2): 166–171.
  28. Wiryawan, K.G., Tjakradidjaja, A.S., Ratih, A.M.R. and Janingrum, E.D. (2003) Isolation of the antimicrobial producing lactic acid bacteria. *J. Vet.*, 4(3): 85–92.
  29. Melia, S. and dan Yuherman, F. (2018) Identification of lactic acid bacteria as probiotic candidates isolated from fresh milk (raw milk). Laporan Akhir PDUPT. Universitas Andalas, Padang.
  30. Shahriar, M., Haque, M.R., Kabir, S., Dewan, I. and Bhuyian, M.A. (2011) Effect of proteinase-K on genomic DNA Extraction from Gram-positive strains. *Stamford J. Pharm. Sci.*, 4(1): 53–57.
  31. Miyazaki, K., Sato, M. and Tsukuda, M. (2017) PCR primer design for 16S rRNAs for experimental horizontal gene transfer test in *Escherichia coli*. *Front. Bioeng. Biotechnol.*, 5(14): 1-7.
  32. Peloa, A., Wullur, S. and Sinjal, C.A. (2015) Amplifikasi fen cytochrome oxidase subunit dari sampel sirip ikan hiu dengan menggunakan beberapa pasangan primer. *J. Pesisir Laut Tropis*, 1(1): 37–42.
  33. Arief, I.I. (2011) Characterization of Indigenous Lactic Acid Bacteria from Cattle Trade as Probiotics and Identification by 16S rRNA Gene Base Sequence Analysis. Disertasi. Institut Pertanian Bogor, Bogor.
  34. Donkor, E.S., Dayie, N.T. and Adiku, T.K. (2014) Bioinformatics with basic local alignment search tool (BLAST) and fast alignment (FASTA). *J. Bioinform. Seq. Anal.*, 6(1): 1–6.
  35. Narita, V., Arum, A.L., Isnaeni, S.M. dan Fawzya, N.Y. (2012) Web-based bioinformatics analysis for exploration of chitonase enzymes based on similar sequences. *J. Al Azhar Indones. Seri Sains Teknol.*, 1(4): 197–203.
  36. Telles, G.P., Araújo, G.S., Walter, M.E., Brigido, M.M. and Almeida, N.F. (2018) Live neighbor-joining. *BMC Bioinform.*, 19(1): 1–13.
  37. Tamura, K., Dudley, J., Nei, M. and Kumar, S. (2007) MEGA 4: Molecular evolutionary genetics analysis (MEGA) software version 4.0. *Mol. Biol. Evol.*, 24(8): 1596–1599.
  38. Horiike, T., Miyata, D., Hamada, K., Saruhashi, S., Shinozawa, T., Kumar, S., Chakraborty R., Kimayama, T. and Tateno, Y. (2009) Phylogenetic construction of 17 bacterial phyla by new method and carefully selected orthologs. *Gene*, 429(1–2): 59–64.
  39. Coenye, T. and Vandamme, P. (2003) Extracting phylogenetic information from whole genome sequencing projects: The lactic acid bacteria as a test case. *Microbiology*, 149(12): 3507–3517.
  40. Kačániová, M., Kunová, S., Sabo, J., Ivanišová, E., Žiarovská, J., Felšöciová, S., Fatrcová-Šramková, K. and Terentjeva, M. (2020) Isolation and identification of lactic acid bacteria in wine production by MALDI-TOF MS biotyper. *Acta Hort. Regiotect.*, 23(1): 21–24.

\*\*\*\*\*