

Prenatal programming of motivated behaviors: can innate immunity prime behavior?

Larisa Montalvo-Martínez^{1,2}, Gabriela Cruz-Carrillo^{1,2}, Roger Maldonado-Ruiz^{1,2}, Luis A. Trujillo-Villarreal^{1,2}, Eduardo A. Garza-Villarreal³, Alberto Camacho-Morales^{1,2,*}

<https://doi.org/10.4103/1673-5374.346475>

Date of submission: January 20, 2022

Date of decision: March 9, 2022

Date of acceptance: March 21, 2022

Date of web publication: June 2, 2022

From the Contents

Introduction	280
Prenatal Programming of Motivated Behaviors in the Offspring	280
High-Energy Dense Diets Activate Innate Immunity during Prenatal Programming	281
Defining the Contribution of Innate Immune Activation to Defective Motivated Behaviors	281
Conclusion and Future Perspectives	282

Abstract

Prenatal programming during pregnancy sets physiological outcomes in the offspring by integrating external or internal stimuli. Accordingly, pregnancy is an important stage of physiological adaptations to the environment where the fetus becomes exposed and adapted to the maternal milieu. Maternal exposure to high-energy dense diets can affect motivated behavior in the offspring leading to addiction and impaired sociability. A high-energy dense exposure also increases the pro-inflammatory cytokines profile in plasma and brain and favors microglia activation in the offspring. While still under investigation, prenatal exposure to high-energy dense diets promotes structural abnormalities in selective brain regions regulating motivation and social behavior in the offspring. The current review addresses the role of energy-dense foods programming central and peripheral inflammatory profiles during embryonic development and its effect on motivated behavior in the offspring. We provide preclinical and clinical evidence that supports the contribution of prenatal programming in shaping immune profiles that favor structural and brain circuit disruption leading to aberrant motivated behaviors after birth. We hope this minireview encourages future research on novel insights into the mechanisms underlying maternal programming of motivated behavior by central immune networks.

Key Words: addiction; autism; behavior; cytokines; diet; maternal immune activation; prenatal programming; sociability; trained immunity; western-diets

Introduction

Fetal programming or prenatal programming proposes that certain diseases in adulthood are primed during embryonic development (Scher, 2021). Prenatal programming integrates external or internal stimuli that modulate metabolic, hormonal, immune, and behavioral nodes during development, allowing healthy or aberrant outcomes to the infant after birth (Scher, 2021). Pregnancy is an important stage of physiological adaptations to the environment during which the fetus is exposed to the mother's hormonal, metabolic, and immune profiles (Scher, 2021). During pregnancy and lactation, neuronal maturation, including axonal pruning, synaptic plasticity, and stable tract formation between brain structures, are selectively programmed during pregnancy and lactation (Montalvo-Martínez et al., 2018; Trujillo Villarreal et al., 2021a).

Consumption of high-sugar, high-fat, or high-sugar-high-fat diets during the prenatal stage define aberrant behavioral phenotypes in the offspring, which might be exacerbated during adulthood. While still under investigation, prenatal exposure to high-sugar-high-fat diets sets defective behaviors such as incentive-motivation behaviors leading to compulsive or mood disorders. It is believed that high-sugar-high-fat diets, defined as high-energy diets, become an aberrant stimulus that favors activation of the maternal innate immune system and alters proper fetal development. In this review, we will provide preclinical and clinical evidence that supports the contribution of prenatal programming by high-energy diets in shaping immune profiles that favor susceptibility to aberrant motivated behaviors in the offspring. We hope this review encourages future research on prenatal programming, including maternal factors such as diet and inflammatory immune profiles, as well as offspring factors such as brain imaging to measure motivated behavior for reinforcements, in order to provide better therapeutic and lifestyle interventions during prenatal stages.

Search Strategy and Selection Criteria

Peer-reviewed articles were searched using PubMed database initially with no limitation on publication date. We designed a two-step strategy, for the first step, we searched terms: "autism" and "prenatal programming"; "autism" and "maternal immune activation"; "social behavior" and "high-fat diet"; and "addiction" and "high-fat diet". This first strategy allowed us to identify

the role of prenatal and/or maternal programming by high-energy diets on motivated behavior including sociability or addiction. For the second step, we search terms: "western diet" and "trained immunity"; "maternal immune activation" and "cytokines"; "cytokines" and "western diet" and "behavior"; "cytokines" and "diet" and "behavior" and "addiction"; and "cytokines" and "diet" and "behavior" and "sociability". The second step displayed reports supporting the role of high-energy diets on innate immunity, innate training and cytokines profiles and their effect on social and/or addiction-like behavior. All publications cited by the references identified in the PubMed database were selectively examined and screened for their relevance to the main topic "Prenatal programming of innate immunity on motivated behaviors after birth".

We aimed to provide a compact proposal providing evidence of prenatal triggers modulating the establishment of brain circuitry and their effects of behavior after birth.

Prenatal Programming of Motivated Behaviors in the Offspring

In nature, certain stimuli are rewarding or pleasurable and become adopted by individuals through motivated behaviors. By definition, motivated behaviors are voluntary behaviors that constantly engage in activities that provide reward or pleasure, such as drinking, eating or sex, or some social experiences. In the brain, rewards activate two main dopaminergic pathways that arise from the ventral tegmental area: the mesolimbic pathway and the mesocortical pathway. The mesolimbic pathway integrates the nucleus accumbens, central amygdala, basolateral amygdala, bed nucleus of stria terminalis, lateral septal area, and lateral hypothalamus; whereas the mesocortical pathway, the orbitofrontal and prefrontal cortices.

Ourselves and others have reported that prenatal programming by exposure to high-energy diets in dams primes aberrant motivated behavior in the offspring, including addiction-like, depression-like, and autism-like behaviors (Peleg-Raibstein et al., 2016; Camacho et al., 2017; Winther et al., 2018; Cruz-Carrillo et al., 2020; Gawlińska et al., 2021; Maldonado-Ruiz et al., 2021; Trujillo-Villarreal et al., 2021a, b). In particular, exposure to high-energy diets during fetal development primes addiction-like behavior in the offspring of rodents, as was determined by major lever press responses for food during

¹Universidad Autónoma de Nuevo León, Department of Biochemistry, College of Medicine, Monterrey, México; ²Universidad Autónoma de Nuevo León, Neurometabolism Unit, Center for Research and Development in Health Sciences, Monterrey, México; ³Universidad Nacional Autónoma de México, Campus Juriquilla Instituto de Neurobiología, Queretaro, México

*Correspondence to: Alberto Camacho-Morales, PhD, acm590@hotmail.com or alberto.camachomr@uanl.edu.mx.

<https://orcid.org/0000-0002-2588-9489> (Alberto Camacho-Morales)

Funding: This work was supported by the National Council of Science and Technology in Mexico (CONACYT) 708452 CONACYT to LMM, 855559 CONACYT to GCC, 573686 CONACYT to RMR and PAICYT 2021 to ACM.

How to cite this article: Montalvo-Martínez L, Cruz-Carrillo G, Maldonado-Ruiz R, Trujillo-Villarreal LA, Garza-Villarreal EA, Camacho-Morales A (2023) Prenatal programming of motivated behaviors: can innate immunity prime behavior? *Neural Regen Res* 18(2):280-283.

the behavioral test schedule for reinforcers (Cruz-Carrillo et al., 2020; **Figure 1A and B**). It seems that the offspring experience a high reward value for food that imitates the motivational and impulsive behavior for seeking synthetic reinforcers such as alcohol or drugs. On its own, clinical confirmation of prenatal programming by nutrition as a leading cause of motivated behavior for food intake in humans is limited and largely derived from observational studies, without a proof-of-concept validation. However, some clinical reports have provided advances in the understanding of prenatal programming of food “preferences” in the offspring (Spahn et al., 2019). For instance, a taste for flavors such as alcohol, anise, carrot, or garlic can be transferred from the mother to the offspring through the amniotic fluid, and these flavors can be accepted when re-exposed during infancy (Mennella et al., 1995, 2017; Spahn et al., 2019). While these reports do not confirm motivated behavior for food intake in the offspring, some data documented that a greater intake of red or processed meat, low-fat snacks and desserts, and low-calorie beverages were positively associated with motivated behaviors for food, whereas consumption of refined grains, sugar-sweetened beverages and fruits, vegetables, and legumes were inversely associated with these behaviors (Lemeshow et al., 2018). Some potential limitations to the lack of consistency, reproducibility, and validation of the concept of prenatal programming by high-energy diets in mothers are in part due to pregnant women displaying episodes of cravings for palatable foods, which disturbs the accuracy of the diagnosis (Orloff and Hormes, 2014; Padmanabhan et al., 2015; Blau et al., 2020). Also, there is a lack of selective diagnosis criteria for motivation behavior for food based on the current categorization of the Diagnostic and Statistical Manual of Mental Disorders, 5th Edition, which includes eating disorders such as anorexia nervosa, bulimia nervosa, or BE disorder (American Psychiatric Publishing, 2016).

The effects of exposure to high-energy diets exposure during prenatal programming on defective behavior were recently confirmed by our research group. We reported for the first time that mice programmed by high-energy diets experienced defects in social interaction with their peers (Maldonado-Ruiz et al., 2021; **Figure 2A**). Some clinical reports have confirmed the detrimental effect of exposure to high-energy diets on sociability in the descendants. However, no clear evidence has precisely confirmed the effect of high-energy diets during fetal programming on social interaction in the newborn. Recent reports documented that children diagnosed with autism spectrum disorder (ASD) display higher consumption of high-energy foods than typically developing peers, suggesting, in part, motivational behavior for food preferences (Plaza-Diaz et al., 2021). Also, maternal obesity leads to 1.39% to 1.59% of cases of ASD and a greater likelihood of having a child with ASD compared with their lean counterparts (Wang et al., 2016). While this clinical evidence does not confirm a causal effect of fetal programming by high-energy diets on ASD susceptibility and defective sociability, some reports have confirmed that a positive energy balance such as happened during maternal obesity does prime defective motivational behavior in people within the ASD.

High-Energy Dense Diets Activate Innate Immunity during Prenatal Programming

We have just started to decode how prenatal exposure to high-energy diets sets the physiological triggers of motivated behavior in the offspring. Randomized Controlled Clinical Trials collectively confirm that polyphenols and combinations of nutrients such as terpenoids, but not long-chain polyunsaturated fatty acids, vitamin D, specific proteins, or amino acids, improved cognitive performance in humans (Gutierrez et al., 2021). Conversely, exposure to high-energy diets is thought to disrupt the physiological configuration of the reward system in rodents, which is expected to take place as early as embryonic day 13. High-energy diets refer to selective food formulas made of high-sugar, high-fat, or high-sugar-high-fat that provide most of the calories from those nutrients. However, these diets typically have little resemblance to the human Western dietary pattern in terms of macro- and micronutrient content (Hintze et al., 2018). For instance, according to the National Health and Nutrition Examination Survey, the typical American diet formula contains 49% of its calories from carbohydrates, 35% from fat, and 16% from protein (Hintze et al., 2018). In preclinical studies, the term “Western” diet is reserved for those formulas that derive 60% to 70% of its calories from carbohydrates (high-sugar), or 32% to 60% from fat (high fat) or a combination of 54% carbohydrates and 34% fat (high-sugar-high-fat). The high-fat formula has been extensively reported as an adverse trigger of prenatal programming, affecting the establishment of brain circuitry in the offspring.

While still under investigation, prenatal programming by exposure to high-energy diets and their effects on the offspring behavior seems to be primed at very early stages of development. Reports confirm that mothers provide an innate priming stimulus showing interleukin (IL)-6 accumulation in plasma after ingesting a high-fat diet feeding (Bordeleau et al., 2020). In fact, increases in the mRNA levels of IL-6 have been found in the placenta of dams exposed to the high-fat diet, and it could potentially cross the placental barrier to modulate fetal development (Dahlgren et al., 2006). Notably, higher maternal IL-6 concentration during pregnancy was associated with defective brain connectivity and cognitive performance in the newborn at 2 years of age (Graham et al., 2018; Rudolph et al., 2018). Finally, peripheral administration of IL-6 could induce neurovascular remodeling leading to

increased permeability of the blood-brain barrier and defective behavior in mice (Menard et al., 2017). This evidence supports a causal effect of IL-6 accumulation in dams exposed to high-energy diets during pregnancy affecting the establishment of brain circuits establishment at the fetus.

Mechanistically, the high-fat diet formula has been confirmed as a trigger of innate immune activation. We and others have confirmed that the saturated lipid, palmitic acid, found in great concentration in the high-fat diet formulas, activates the Toll-like receptor 4 in the brain to pro-inflammatory IL-1 β , IL-6, and TNF- α cytokines gene expression and released in plasma (Milanski et al., 2009; Delint-Ramirez et al., 2015). The Toll-like receptor 4/MyD88 pathway and NF- κ B translocation into the nucleus subsequent production of pro-inflammatory cytokines (Kleinridders et al., 2009), and has been also reported to enhance microglial responses (Beaulieu et al., 2021). For instance, palmitic acid impairs migration and phagocytosis of microglia in response to a pro-inflammatory stimulus (West et al., 2019). Finally, palmitic acid was found to accumulate in the cerebrospinal fluid of overweight and obese subjects diagnosed with amnesic mild cognitive impairment (Melo et al., 2020). These pieces of evidence suggest that food rich in fat and sugar is perceived as an aberrant stimulus during prenatal programming, setting pro-inflammatory profiles, activating microglia, and affecting neuronal function at early stages of development.

As stated, prenatal programming modulates metabolic, hormonal, immune, and behavioral nodes during development, all of which are targeted and negatively disrupted by high-energy diets. However, it is not totally clear how these nodes are mutually integrated and become responsive to high-energy diets during the prenatal stage, setting aberrant behaviors in the offspring, and this is a major future perspective for research.

Defining the Contribution of Innate Immune Activation to Defective Motivated Behaviors

We have focused our research on the hypothesis that exposing dams to high-energy diets favors the activation of the innate immune system during embryonic development, which affects the integration of brain circuits and leads to aberrant motivated behaviors in the offspring. Reports have shown that central and peripheral immune cells interact with each other and coordinate major pathways of synaptic refinement and proper connectome establishment during neurodevelopment. In the last decade, experimental evidence has confirmed that the central nervous system is not an “immunologic privileged” organ, but that peripheral immune cells infiltrate the brain and coordinate neurodevelopment by central-peripheral crosstalk (Stephenson et al., 2018). Compromising the central-peripheral innate crosstalk develops neurodegenerative susceptibility in murine models (Stephenson et al., 2018). Physiologically, the innate system includes macrophages, neutrophils, basophils, eosinophils, and natural killer cells, and also the microglia, the brain resident macrophages.

The most realistic evidence confirming the role of innate immune activation favoring aberrant motivated behavior in the offspring came from mothers exposed to infection during pregnancy. Substantial preclinical and clinical reports have documented that maternal innate immune activation increases susceptibility to neuropsychiatric disorders in the offspring, including schizophrenia, attention-deficit/hyperactivity disorder, Tourette syndrome, bipolar disorder, and ASD (Brown and Meyer, 2018). Preclinical studies have provided some advances for characterizing biological traits linked to maternal immune activation that codes for aberrant motivational behavior in the offspring. Prenatal exposure to pro-inflammatory agents (such as lipopolysaccharide or poly I:C) reduces social interaction in murine models and nonhuman primates. Notably, defects in sociability correlate with an increase of pro-inflammatory cytokines INF- γ , IL-6, IL-17a, and TNF- α in plasma, and high expression of IL-6, toll-like receptor-4, and monocyte chemoattractant protein-1 (MCP-1) in the fetal brain (Careaga et al., 2017), which has been also documented in ASD subjects. It seems that maternal immune activation by Poly I:C disrupts cortical microstructure in rodents showing social defects which depends on the IL-17a signaling (Shin Yim et al., 2017). In this context, we have reported that asocial offspring born from murine dams exposed to high energy-diets shows plasma pro-inflammatory profile that includes INF- γ , IL-6, IL-17a, IL-6, and MCP-1, and also, volume brain alterations and reactive microglia and gliosis (Maldonado-Ruiz et al., 2021; Trujillo-Villarreal et al., 2021a; **Figure 2A–D**). Notably, we discovered that systemic MCP-1 inhibition by an MCP-1 antibody increases the brain volume of the primary somatosensory cortex whereas decreases the brain volume of lobe X of cerebellum in the offspring of control and cafeteria subjects (**Figure 2C and D**). Accordingly, microglia, as the major innate immune cell in the brain, is sensitive to high energy-diets and altered establishment of neuronal circuits establishment during development by affecting myelination (Bordeleau et al., 2021), synaptic pruning (Smith et al., 2020), and potentially by modulating blood flow and neurovascular coupling to brain function (Szalay et al., 2016; Shen et al., 2020) or neuronal activity (Badimon et al., 2020). These pieces of evidence open a new research field suggesting that systemic chemokines might modulate microglial function and brain volume changes assisting motivated behaviors.

Together, exposure to high-energy diets activates the innate immune system during fetal development favoring pro-inflammatory profiles and structural brain abnormalities in murine models which are reminiscent of brain abnormalities found in ASD subjects.

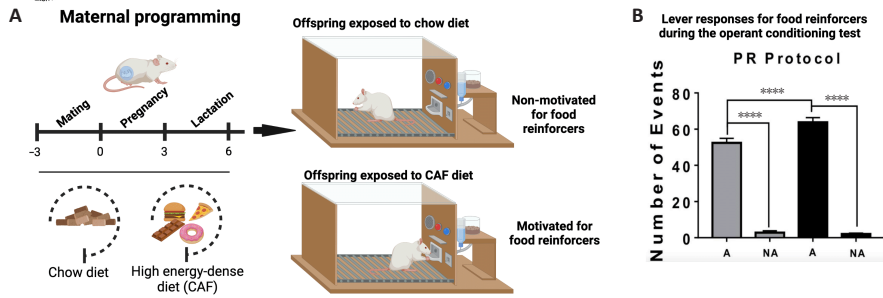


Figure 1 | Maternal programming by high-energy dense diets (CAF) primes motivation behavior for food reinforcers. (A) Maternal programming model. Female Wistar rats were fed for 9 weeks including pre-pregnancy, pregnancy, and lactation with standard chow or CAF. Offspring was fed with control diet after weaning until 2 months of age and was trained in the operant training test protocol to diagnosed motivation behavior for food reinforcers. Offspring of dams exposed to CAF diet develops motivation behavior for food reinforcers. (B) Offspring of dams exposed to CAF diet shows major lever responses to work for food during the behavioral test. Adapted from Cruz-Carrillo et al. (2020) with permission. A: Motivated; NA: non-motivated; PR: progressive ratio. Created with BioRender.com.

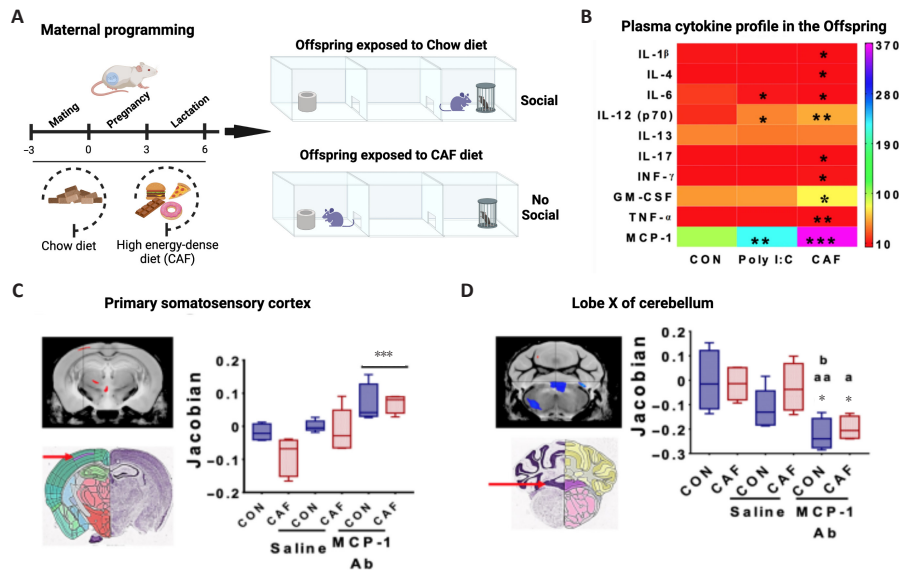


Figure 2 | Maternal programming by high-energy dense diets (CAF) primes defects in social behavior in the offspring. (A) Subjects born from mothers exposed to CAF develop major interaction with the inanimate object when compared with subjects exposed to chow diet. (B) Accumulation of MCP-1 chemokine in offspring of dams exposed to CAF during programming. (C) MRI imaging of primary somatosensory cortex (SSP) or lobe X of cerebellum (CbX) comparing volumetric changes in the offspring of control and CAF subjects followed MCP-1 antibody inoculation. Adapted from Maldonado-Ruiz et al. (2021) with permission. A: Motivated; CAF: cafeteria; CON: control; NA: non-motivated. Created with BioRender.com.

Conclusion and Future Perspectives

Prenatal programming by high-energy diets highlights the in-utero environment and its critical role in prime susceptibility to aberrant motivated behaviors after birth. A particularly important point to consider is the fact that prenatal programming primes diverse behavioral outcomes coded by the activation of the reward circuit. Despite robust preclinical evidence supporting persistent long-term effects of prenatal programming on aberrant motivated behaviors, evidence in humans is limited and largely derived from observational studies thus, causality or proof of concept of selective physiological traits cannot be inferred.

A major perspective for future research focuses on cell type characterization of innate immune cell infiltration into the brain during physiological and pathological scenarios. In a remarkable report, Jonathan Kipnis and his group identified that a selective population of innate immune cells in the brain came from skull bone niches under homeostatic and pathological conditions (Cugurra et al., 2021). This provides a potential route of innate immune cells infiltration, which might be regulated during prenatal stages of development, modulating the establishment of brain circuitry. In any case, major and active direct-target technological approaches would improve and define how high-energy diets contribute to the infiltration of selective innate immune cells into the brain and the establishment of brain circuits that assist aberrant motivated behaviors after birth.

Acknowledgments: The authors thank M.S. Alejandra Arreola-Triana (Facultad de Ciencias Biológicas, Universidad Autónoma de Nuevo León, San Nicolas de los Garza, México) for her support on editing this manuscript.

Author contributions: LMM, GCC, RMR performed the experiments. LMM, GCC, RMR and ACM wrote the manuscript. LATV performed the experiments. EAGV wrote the original manuscript. All authors reviewed, edited, and approved the final manuscript.

Conflicts of interest: The authors declare no conflicts of interest.

Open access statement: This is an open access journal, and articles are distributed under the terms of the Creative Commons AttributionNonCommercial-ShareAlike 4.0 License, which allows others to remix, tweak, and build upon the work non-commercially, as long as appropriate credit is given and the new creations are licensed under the identical terms.

References

- Segal DL, Marty MA, Coolidge FL (2017) Diagnostic and statistical manual of mental disorders, fifth edition (DSM-5). Washington DC: American Psychiatric Association.
- Badimon A, Strasburger HJ, Ayata P, Chen X, Nair A, Ikegami A, Hwang P, Chan AT, Graves SM, Uweru JO, Ledderose C, Kutlu MG, Wheeler MA, Kahan A, Ishikawa M, Wang YC, Loh YE, Jiang JX, Surmeier DJ, Robson SC, et al. (2020) Negative feedback control of neuronal activity by microglia. *Nature* 586:417-423
- Beaulieu J, Costa G, Renaud J, Moitié A, Glémet H, Sergi D, Martinoli MG (2021) The neuroinflammatory and neurotoxic potential of palmitic acid is mitigated by oleic acid in microglial cells and microglial-neuronal co-cultures. *Mol Neurobiol* 58:3000-3014.
- Blau LE, Lipsky LM, Dempster KW, Eisenberg Colman MH, Siega-Riz AM, Faith MS, Nansel TR (2020) Women's experience and understanding of food cravings in pregnancy: a qualitative study in women receiving prenatal care at the University of North Carolina-Chapel Hill. *J Acad Nutr Diet* 120:815-824.
- Bordeleau M, Lacabanne C, Fernández de Cossío L, Vernoux N, Savage JC, González-Ibáñez F, Tremblay MÈ (2020) Microglial and peripheral immune priming is partially sexually dimorphic in adolescent mouse offspring exposed to maternal high-fat diet. *J Neuroinflammation* 17:264.
- Bordeleau M, Fernández de Cossío L, Lacabanne C, Savage JC, Vernoux N, Chakravarty M, Tremblay MÈ (2021) Maternal high-fat diet modifies myelin organization, microglial interactions, and results in social memory and sensorimotor gating deficits in adolescent mouse offspring. *Brain Behav Immun Health* 15:100281.
- Brown AS, Meyer U (2018) Maternal immune activation and neuropsychiatric illness: a translational research perspective. *Am J Psychiatry* 175:1073-1083.
- Camacho A, Montalvo-Martinez L, Cardenas-Perez RE, Fuentes-Mera L, Garza-Ocañas L (2017) Obesogenic diet intake during pregnancy programs aberrant synaptic plasticity and addiction-like behavior to a palatable food in offspring. *Behav Brain Res* 330:46-55.

- Careaga M, Murai T, Bauman MD (2017) Maternal immune activation and autism spectrum disorder: from rodents to nonhuman and human primates. *Biol Psychiatry* 81:391-401.
- Cruz-Carrillo G, Montalvo-Martínez L, Cárdenas-Tueme M, Bernal-Vega S, Maldonado-Ruiz R, Reséndez-Pérez D, Rodríguez-Ríos D, Lund G, Garza-Ocañas L, Camacho-Morales A (2020) Fetal programming by methyl donors modulates central inflammation and prevents food addiction-like behavior in rats. *Front Neurosci* 14:452.
- Cugurra A, Mamuladze T, Rustenhoven J, Dykstra T, Beroshvili G, Greenberg ZJ, Baker W, Papadopoulos Z, Drieu A, Blackburn S, Kanamori M, Brioschi S, Herz J, Schuettpeitz LG, Colonna M, Smirnov I, Kipnis J (2021) Skull and vertebral bone marrow are myeloid cell reservoirs for the meninges and CNS parenchyma. *Science* 373:eabf7844.
- Dahlgren J, Samuelsson AM, Jansson T, Holmäng A (2006) Interleukin-6 in the maternal circulation reaches the rat fetus in mid-gestation. *Pediatr Res* 60:147-151.
- Delint-Ramirez I, Maldonado Ruiz R, Torre-Villalvazo I, Fuentes-Mera L, Garza Ocañas L, Tovar A, Camacho A (2015) Genetic obesity alters recruitment of TANK-binding kinase 1 and AKT into hypothalamic lipid rafts domains. *Neurochem Int* 80:23-32.
- Gawlińska K, Gawliński D, Kowal-Wiśniewska E, Jarmuż-Szymczak M, Filip M (2021) Alteration of the early development environment by maternal diet and the occurrence of autistic-like phenotypes in rat offspring. *Int J Mol Sci* 22:9662.
- Graham AM, Rasmussen JM, Rudolph MD, Heim CM, Gilmore JH, Styner M, Potkin SG, Entringer S, Wadhwa PD, Fair DA, Buss C (2018) Maternal systemic interleukin-6 during pregnancy is associated with newborn amygdala phenotypes and subsequent behavior at 2 years of age. *Biol Psychiatry* 83:109-119.
- Gutiérrez L, Folch A, Rojas M, Cantero JL, Atienza M, Folch J, Camins A, Ruiz A, Papandreou C, Bulló M (2021) Effects of nutrition on cognitive function in adults with or without cognitive impairment: A systematic review of randomized controlled clinical trials. *Nutrients* 13:3728.
- Hintze KJ, Benninghoff AD, Cho CE, Ward RE (2018) Modeling the Western diet for preclinical investigations. *Adv Nutr* 9:263-271.
- Kleinridders A, Schenten D, Könnner AC, Belgardt BF, Mauer J, Okamura T, Wunderlich FT, Medzhitov R, Brüning JC (2009) MyD88 signaling in the CNS is required for development of fatty acid-induced Leptin resistance and diet-induced obesity. *Cell Metab* 10:249-259.
- Lemeshow AR, Rimm EB, Hasin DS, Gearhardt AN, Flint AJ, Field AE, Genkinger JM (2018) Food and beverage consumption and food addiction among women in the Nurses' Health Studies. *Appetite* 121:186-197.
- Maldonado-Ruiz R, Trujillo-Villarreal LA, Montalvo-Martínez L, Mercado-Gómez OF, Arriaga-Ávila V, Garza-Ocañas L, Ortiz-López R, Garza-Villarreal EA, Guevara-Guzmán R, Camacho-Morales A (2022) MCP-1 signaling disrupts social behavior by modulating brain volumetric changes and microglia morphology. *Mol Neurobiol* 59:932-949.
- Melo HM, Seixas da Silva GDS, Sant'Ana MR, Teixeira CVL, Clarke JR, Miya Coreixas VS, de Melo BC, Fortuna JTS, Forny-Germano L, Ledo JH, Oliveira MS, Figueiredo CP, Pardossi-Piquard R, Checler F, Delgado-García JM, Gruart A, Velloso LA, Balthazar MLF, Cintra DE, Ferreira ST, et al. (2020) Palmitate is increased in the cerebrospinal fluid of humans with obesity and induces memory impairment in mice via pro-inflammatory TNF- α . *Cell Rep* 30:2180-2194.
- Menard C, Pfau ML, Hodes GE, Kana V, Wang VX, Bouchard S, Takahashi A, Flanigan ME, Aleyasin H, LeClair KB, Janssen WG, Labonté B, Parise EM, Lorsch ZS, Golden SA, Heshmati M, Tamminga C, Turecki G, Campbell M, Fayad ZA, et al. (2017) Social stress induces neurovascular pathology promoting depression. *Nat Neurosci* 20:1752-1760.
- Mennella JA, Johnson A, Beauchamp GK (1995) Garlic ingestion by pregnant women alters the odor of amniotic fluid. *Chem Senses* 20:207-209.
- Mennella JA, Daniels LM, Reiter AR (2017) Learning to like vegetables during breastfeeding: a randomized clinical trial of lactating mothers and infants. *Am J Clin Nutr* 106:67-76.
- Milanski M, Degasperis G, Coope A, Morari J, Denis R, Cintra DE, Tsukumo DM, Anhe G, Amaral ME, Takahashi HK, Curi R, Oliveira HC, Carvalheira JB, Bordin S, Saad MJ, Velloso LA (2009) Saturated fatty acids produce an inflammatory response predominantly through the activation of TLR4 signaling in hypothalamus: implications for the pathogenesis of obesity. *J Neurosci* 29:359-370.
- Montalvo-Martínez L, Maldonado-Ruiz R, Cárdenas-Tueme M, Reséndez-Pérez D, Camacho A (2018) Maternal overnutrition programs central inflammation and addiction-like behavior in offspring. *Biomed Res Int* 2018:8061389.
- Orloff NC, Hormes JM (2014) Pickles and ice cream! Food cravings in pregnancy: hypotheses, preliminary evidence, and directions for future research. *Front Psychol* 5:1076.
- Padmanabhan U, Summerbell CD, Heslehurst N (2015) A qualitative study exploring pregnant women's weight-related attitudes and beliefs in UK: The BLOOM study. *BMC Pregnancy Childbirth* 15:99.
- Peleg-Raibstein D, Sarker G, Litwan K, Krämer SD, Ametamey SM, Schibli R, Wolfrum C (2016) Enhanced sensitivity to drugs of abuse and palatable foods following maternal overnutrition. *Transl Psychiatry* 6:e911.
- Plaza-Diaz J, Flores-Rojas K, Torre-Aguilar MJ, Gomez-Fernández AR, Martín-Borreguero P, Perez-Navero JL, Gil A, Gil-Campos M (2021) Dietary patterns, eating behavior, and nutrient intakes of Spanish preschool children with autism spectrum disorders. *Nutrients* 13:3551.
- Rudolph MD, Graham AM, Feczko E, Miranda-Dominguez O, Rasmussen JM, Nardos R, Entringer S, Wadhwa PD, Buss C, Fair DA (2018) Maternal IL-6 during pregnancy can be estimated from newborn brain connectivity and predicts future working memory in offspring. *Nat Neurosci* 21:765-772.
- Scher MS (2021) "The first thousand days" define a fetal/neonatal neurology program. *Front Pediatr* 9:683138.
- Shen Q, Chen Z, Zhao F, Pan S, Zhang T, Cheng X, Zhang L, Zhang S, Qi J, Li J, Cai D, Zhang G (2020) Reversal of prolonged obesity-associated cerebrovascular dysfunction by inhibiting microglial Tak1. *Nat Neurosci* 23:832-841.
- Shin Yim Y, Park A, Berrios J, Lafourcade M, Pascual LM, Soares N, Yeon Kim J, Kim S, Kim H, Waisman A, Littman DR, Wickersham IR, Harnett MT, Huh JR, Choi GB (2017) Reversing behavioural abnormalities in mice exposed to maternal inflammation. *Nature* 549:482-487.
- Smith BL, Laaker CJ, Lloyd KR, Hiltz AR, Reyes TM (2020) Adolescent microglia play a role in executive function in male mice exposed to perinatal high fat diet. *Brain Behav Immun* 84:80-89.
- Spahn JM, Callahan EH, Spill MK, Wong YP, Benjamin-Neelon SE, Birch L, Black MM, Cook JT, Faith MS, Mennella JA, Casavale KO (2019) Influence of maternal diet on flavor transfer to amniotic fluid and breast milk and children's responses: a systematic review. *Am J Clin Nutr* 109:1003S-1026S.
- Stephenson J, Nutma E, van der Valk P, Amor S (2018) Inflammation in CNS neurodegenerative diseases. *Immunology* 154:204-219.
- Szalay G, Martinecz B, Lénárt N, Környei Z, Orsolits B, Judák L, Császár E, Fekete R, West BL, Katona G, Rózsa B, Dénes Á (2016) Microglia protect against brain injury and their selective elimination dysregulates neuronal network activity after stroke. *Nat Commun* 7:11499.
- Trujillo-Villarreal LA, Romero-Díaz VJ, Marino-Martínez IA, Fuentes-Mera L, Ponce-Camacho MA, Devenyi GA, Mallar Chakravarty M, Camacho-Morales A, Garza-Villarreal EE (2021a) Maternal cafeteria diet exposure primes depression-like behavior in the offspring evoking lower brain volume related to changes in synaptic terminals and gliosis. *Transl Psychiatry* 11:53.
- Trujillo Villarreal LA, Cárdenas-Tueme M, Maldonado-Ruiz R, Reséndez-Pérez D, Camacho-Morales A (2021b) Potential role of primed microglia during obesity on the mesocorticolimbic circuit in autism spectrum disorder. *J Neurochem* 156:415-434.
- Wang Y, Tang S, Xu S, Weng S, Liu Z (2016) Maternal body mass index and risk of autism spectrum disorders in offspring: a meta-analysis. *Sci Rep* 6:34248.
- West PK, Viengkhou B, Campbell IL, Hofer MJ (2019) Microglia responses to interleukin-6 and type I interferons in neuroinflammatory disease. *Glia* 67:1821-1841.
- Winther G, Elfving B, Müller HK, Lund S, Wegener G (2018) Maternal high-fat diet programs offspring emotional behavior in adulthood. *Neuroscience* 388:87-101.