

## PAPER

Cite this: *Nanoscale Adv.*, 2019, 1, 1784

# Realization and direct observation of five normal and parametric modes in silicon nanowire resonators by *in situ* transmission electron microscopy†

Feng-Chun Hsia,<sup>abc</sup> Dai-Ming Tang,<sup>da\*</sup> Wipakorn Jevasuwan,<sup>a</sup> Naoki Fukata,<sup>da</sup> Xin Zhou,<sup>a</sup> Masanori Mitome,<sup>da</sup> Yoshio Bando,<sup>adf</sup> Torbjörn E. M. Nordling<sup>db</sup> and Dmitri Golberg<sup>dae</sup>

Mechanical resonators have wide applications in sensing bio-chemical substances, and provide an accurate method to measure the intrinsic elastic properties of oscillating materials. A high resonance order with high response frequency and a small resonator mass are critical for enhancing the sensitivity and precision. Here, we report on the realization and direct observation of high-order and high-frequency silicon nanowire (Si NW) resonators. By using an oscillating electric-field for inducing a mechanical resonance of single-crystalline Si NWs inside a transmission electron microscope (TEM), we observed resonance up to the 5<sup>th</sup> order, for both normal and parametric modes at ~100 MHz frequencies. The precision of the resonant frequency was enhanced, as the deviation reduced from 3.14% at the 1<sup>st</sup> order to 0.25% at the 5<sup>th</sup> order, correlating with the increase of energy dissipation. The elastic modulus of Si NWs was measured to be ~169 GPa in the [110] direction, and size scaling effects were found to be absent down to the ~20 nm level.

Received 2nd December 2018  
Accepted 24th February 2019

DOI: 10.1039/c8na00373d

rsc.li/nanoscale-advances

## Introduction

Mechanical resonance is a non-linear response of an oscillating system to specific frequencies linking the external stimuli and the intrinsic microstructure and elastic properties of a material. Resonators are widely used as sensors in micro-/nano-electromechanical systems (MEMS and NEMS), and are also employed for the elastic property measurements of resonating materials.<sup>1–5</sup> While using as mass, chemical and bio-sensors,<sup>2–4,6–10</sup> the sensitivity ( $S$ ) of a resonator is defined by a shift of the resonant frequency with a change of its mass ( $\Delta m$ ) calculated as:<sup>11,12</sup>

$$S = \frac{f - f_{\Delta m}}{\Delta m} \approx \frac{f}{2m_r} \quad (1)$$

where  $f$  and  $f_{\Delta m}$  are the resonant frequencies without and with the mass changes, and  $m_r$  is the resonator's mass. When  $\Delta m \ll m_r$ , sensitivity is approximately equal to the resonant frequency divided by twice the resonator's mass. Eqn (1) implies that higher sensitivity can be achieved by increasing the resonant frequency or by reducing the resonator's mass, *i.e.*, downscaling the resonator size. Since the frequency is higher for higher resonance orders, increasing the order of the resonant mode provides a way for increasing the resonator's sensitivity.<sup>11,12</sup> For example, Ghatkesar *et al.* reported that the mass sensitivity is linearly proportional to the square of the mode order.<sup>11</sup> Moreover, the resonant response to the driving frequency, defined as a quality factor, is also enhanced with increasing mode order.<sup>13,14</sup> These facts clearly point at the significance of high-order and high frequency nanoscale resonators for NEMS. However, it is still challenging to realize high-order resonances at high frequencies due to the large energy dissipation and strict resonant conditions.<sup>15,16</sup> By using the top-down approach, high-order normal and parametric resonances were demonstrated,<sup>17,18</sup> with a resonant frequency of several MHz.<sup>17</sup> Bottom-up grown nanowires (NWs) are attractive as high frequency resonators because of their high crystallinity and small mass. A high frequency, ~200 MHz, of doubly clamped silicon nanowire (Si NW) resonators was reported;<sup>19</sup> however, the resonant mode was limited to the 2<sup>nd</sup> order.<sup>20</sup>

<sup>a</sup>International Center for Materials Nanoarchitectonics (MANA), National Institute for Materials Science (NIMS), 1-1 Namiki, Tsukuba, Ibaraki 305-0044, Japan. E-mail: tang.daiming@nims.go.jp

<sup>b</sup>Department of Mechanical Engineering, National Cheng Kung University, No. 1, University Road, Tainan City 701, Taiwan

<sup>c</sup>Advanced Research Center for Nanolithography (ARCNL), Science Park 106, Amsterdam 1098 XG, The Netherlands

<sup>d</sup>Australian Institute for Innovative Materials, University of Wollongong, Wollongong, New South Wales 2500, Australia

<sup>e</sup>School of Chemistry, Physics and Mechanical Engineering, Science and Engineering Faculty, Queensland University of Technology (QUT), 2<sup>nd</sup> George Str., Brisbane, QLD 4000, Australia

<sup>f</sup>Institute of Molecular Plus, Tianjin University, No. 11 Building, No. 92 Weijin Road, Nankai District, Tianjin, 300072, P. R. China

† Electronic supplementary information (ESI) available. See DOI: 10.1039/c8na00373d



Silicon is one of the most important materials for MEMS and NEMS because of the availability of high-quality single crystals and compatibility with microfabrication techniques of the semiconductor industry. One of the most fundamental requirements for application of Si NEMS devices is the elastic properties on the nanometer scale. In previous studies, the Young's modulus of Si NWs was reported in a wide range, from 120 to 170 GPa in the [110] direction<sup>21–23</sup> and 60 to 210 GPa in the [111] direction.<sup>21,24–31</sup> In addition, there is still controversy over the size scaling effects with respect to Si's elastic modulus.<sup>21,23,27,29</sup> Gordon *et al.* used a resonance method and reported that the elastic modulus increases with decreasing the NW diameter,<sup>27</sup> whereas Calahorra *et al.* reported the opposite trend under a bending test.<sup>21</sup> Such a controversy calls for an accurate measurement of the elastic modulus of Si NWs with direct correlation with their microstructures, such as crystallinity, orientation, diameter and oxide layer thickness.

In this work we investigated the mechanical resonance of individual Si NW cantilevers using an *in situ* transmission electron microscopy (TEM) approach.<sup>31</sup> By carefully tuning the frequency of the oscillating electric field acting on the highly crystallized Si NWs, high-order resonances with high frequencies were realized and visualized up to the 5<sup>th</sup> order of normal and parametric modes at frequencies of  $\sim 137.5$  MHz and  $\sim 68.6$  MHz, respectively. The frequencies and their ratios for 10 resonant modes were consistent with the predictions of the classical Euler–Bernoulli (E–B) beam theory. In addition, the precision of the resonant frequency was found to be enhanced for higher resonant mode orders, as the deviations reduced from 3.14% for the 1<sup>st</sup> order to 0.25% for the 5<sup>th</sup> order. The converging trend of the resonant frequency is attributed to the higher energy dissipation at higher resonant mode orders, based on the calculation and analysis of the input electric energy and the output mechanical energy from direct observation. We applied these highly sensitive cantilevers to evaluate the elastic moduli of Si NWs and the oxide layer effects. The elastic modulus was found to be consistent with that of bulk Si crystals and the length scaling effects were absent down to the 20 nm level.

## Experimental

### *In situ* TEM resonance experimental setup for individual Si NWs

The Si NWs are grown using a vapor–liquid–solid (VLS) approach<sup>32</sup> (see also Note S1<sup>†</sup>). Fig. 1 demonstrates the structural characterization of a typical Si NW by TEM. The length ( $L$ ) of this Si NW is  $\sim 2529$  nm (Fig. 1(a)), which was carefully calibrated by considering the height difference and the TEM magnification, as explained in Note S2.<sup>†</sup> We used the minimum contrast defocus to estimate the height difference of the two ends. According to the calculated contrast transfer function (CTF), the minimum contrast defocus is about  $-14$  nm. The defocus error should be within 10 nm, and the average error of the length is  $\sim 0.17\%$ , as demonstrated in Note S3.<sup>†</sup> The circular cross-sectional view of the NW (see Fig. S2<sup>†</sup>) shows a uniform diameter of  $\sim 23.3$  nm and the NW is covered by a naturally

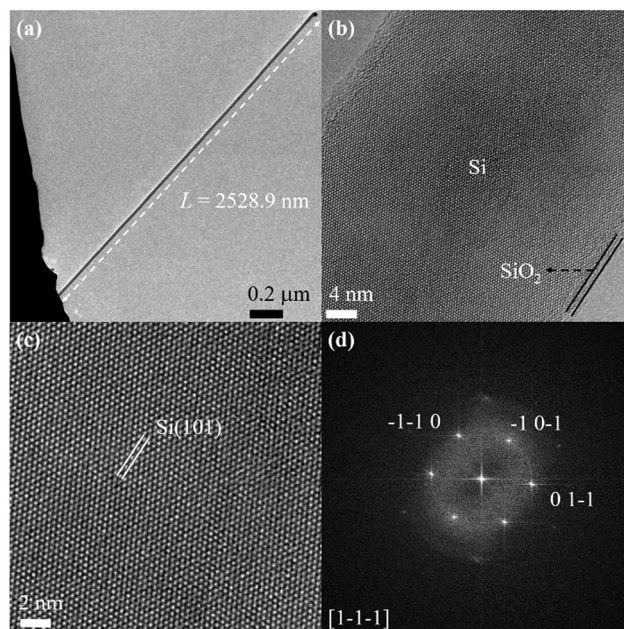


Fig. 1 TEM characterization of a Si NW. (a) The Si NW's length ( $L$ ) was measured under careful calibration of the tilt angle and TEM magnification. (b) The high magnification TEM image shows a thin silicon oxide ( $\text{SiO}_2$ ) layer on the surface. (c) The high-resolution TEM (HRTEM) image demonstrates a single crystalline structure revealing clearly resolved Si (101) lattice fringes. (d) The fast Fourier transform (FFT) pattern can be indexed as the  $[1-1-1]$  zone axis, and the growth direction is along the [101] orientation.

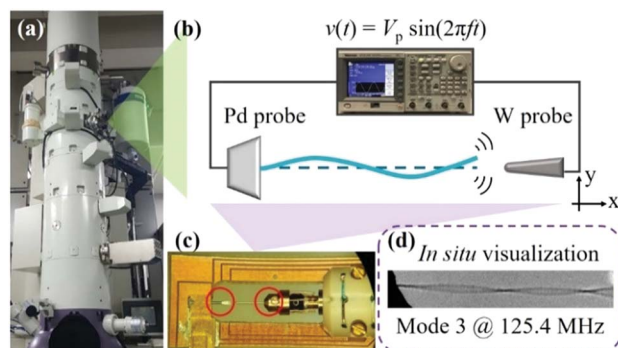
formed thin amorphous  $\text{SiO}_2$  layer (Fig. 1(b)). The high-resolution TEM (HRTEM) image shows that the Si NW has a single-crystalline structure and presents clearly resolved lattice fringes of Si (101) planes (Fig. 1(c)). The corresponding fast Fourier transform (FFT) pattern (Fig. 1(d)) is indexed as the Si  $[1-1-1]$  zone axis, with the NW growth direction along the [101] orientation.

The mechanical vibration of a Si NW is induced by an oscillating electric field between the Si NW and a W probe (see probe preparation in Note S4<sup>†</sup>) in a JEOL-3100F TEM shown in Fig. 2, as explained in Note S5.<sup>†</sup> Based on the Euler–Bernoulli (E–B) beam theory, the equation of motion for a uniform circular cross-sectional NW is derived as:<sup>33</sup>

$$\rho A(x) \frac{\partial^2 u(x,t)}{\partial t^2} + E_{\text{eff}} I \frac{\partial^4 u(x,t)}{\partial x^4} = F(x,t) \quad (2)$$

where  $\rho$  is the density,  $A(x)$  is the cross-sectional area,  $u(x,t)$  is the displacement of the NW in the lateral direction,  $E_{\text{eff}}$  is the effective elastic modulus, and  $I$  is the area moment of inertia ( $I = \pi D^4/64$ , where  $D$  is the diameter) of the Si NW, and  $F(x,t)$  is the external force, which equals to  $F_e$  in eqn (S2).<sup>†</sup> For a free vibration:  $F(x,t) = 0$ , the solution for the normal mode resonant frequency is:

$$f_i = \frac{\beta_i^2}{2\pi} \left( \frac{E_{\text{eff}} I}{\rho A L^4} \right)^{\frac{1}{2}} \quad (3)$$



**Fig. 2** Experimental setup for *in situ* TEM resonance observation. (a) A photograph of the JEOL-3100F TEM operated at 300 kV. (b) An arbitrary function generator (AFG3152C) provides a sinusoidal signal  $v(t) = V_p \sin(2\pi f_d t)$ , where  $V_p$  is the amplitude of the peak voltage and  $f_d$  is the driving frequency. A piezo-controlled tungsten (W) probe is located on the right side. On the left side, individual Si NWs are attached to a flattened palladium (Pd) edge. (c) A photograph of the STM-TEM holder with a fixed Pd electrode and a piezo-controlled W probe as marked with red circles. (d) An example of a Si NW oscillating at the 3<sup>rd</sup> order.

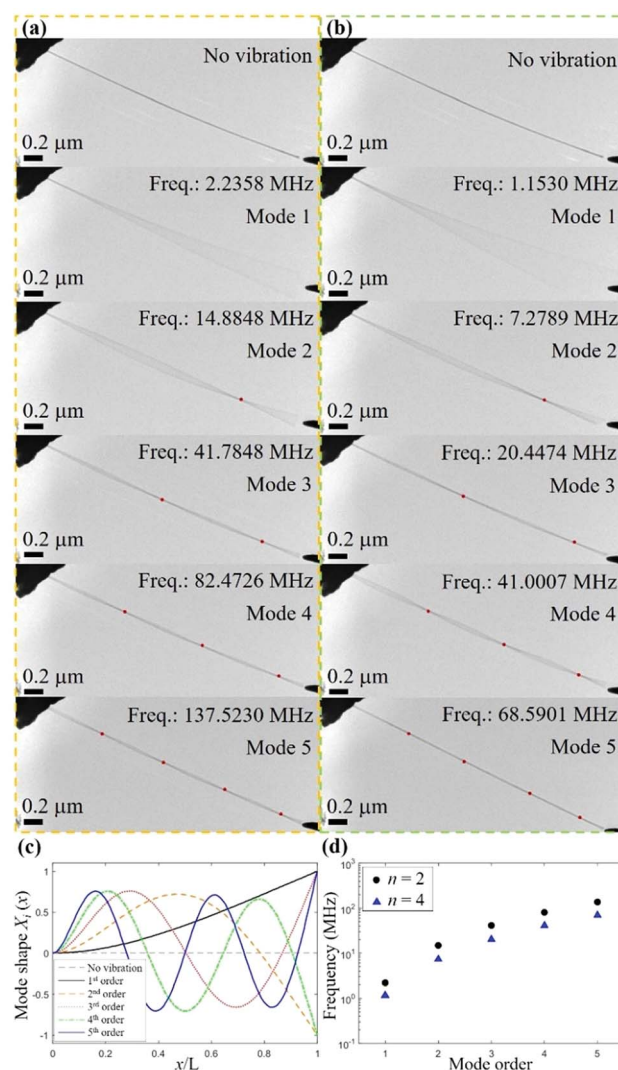
where  $i$  is the mode order ( $i \geq 1$ ),  $f_i$  is the resonant frequency at  $i$ th order, and  $L$  is the length of the NW. In our experiment, the resonant condition for the fixed-free boundary is given by:  $\cos \beta_i L \cdot \cosh \beta_i L = -1$ , with eigenvalues  $\beta_1 = 1.87$ ,  $\beta_2 = 4.69$ ,  $\beta_3 = 7.85$ ,  $\beta_4 = 10.99$  and  $\beta_i \approx (2i - 1)\pi/2$  for  $i \geq 5$ . In addition to the normal mode resonance, parametric modes could be found at frequencies  $2f_i/n$  for the  $n$ th parametric modes, by solving eqn (2) with a non-zero periodic force, as explained in Note S6.†

## Results and discussion

### Realization and observation of five normal and parametric resonances

In order to measure the resonant frequency at different mode orders, we first swept the driving frequency within a certain frequency range, as predicted by eqn (3) from the NW's dimensions. Then, we finely tuned the driving frequency to induce the largest vibration amplitude to locate the resonant frequency. Under careful tuning, we were able to realize and observe up to 10 resonant mode orders for one Si NW. Fig. 3(a) and Video S1† demonstrate the *in situ* recorded mechanical resonant motions, from the 1<sup>st</sup> order to the 5<sup>th</sup> order, at the resonant frequencies of  $\sim 2.2$  MHz,  $\sim 14.9$  MHz,  $\sim 41.8$  MHz,  $\sim 82.5$  MHz and  $\sim 137.5$  MHz. Another series of resonant frequencies, from the 1<sup>st</sup> order to the 5<sup>th</sup> order (Fig. 3(b)), were recorded and could be denoted as the parametric resonance. The relation between normal and parametric resonances can be derived by the Mathieu equation (see eqn S(3)†). In the Strutt diagram<sup>34</sup> (see Fig. S4†), the orange shaded area illustrates the instability regions, where the parametric resonance can be excited, as described in Note S6,† with the resonant frequency written as:<sup>34–36</sup>

$$\frac{\omega_n}{\omega_i} = \frac{f_n}{f_i} = \frac{2}{n} \quad (4)$$



**Fig. 3** Normal and parametric resonances of a Si NW observed by *in situ* TEM. (a) Normal mode ( $n = 2$ ) resonant motions from the 1<sup>st</sup> order to the 5<sup>th</sup> order at  $\sim 2.2$  MHz,  $\sim 14.9$  MHz,  $\sim 41.8$  MHz,  $\sim 82.5$  MHz and  $\sim 137.5$  MHz. Node positions are marked by red solid circles. (b) Parametric resonance ( $n = 4$ ) from the 1<sup>st</sup> order to the 5<sup>th</sup> order at  $\sim 1.1$  MHz,  $\sim 7.2$  MHz,  $\sim 20.4$  MHz,  $\sim 41.0$  MHz and  $\sim 68.6$  MHz. (c) Simulated resonant shapes from the 1<sup>st</sup> order to the 5<sup>th</sup> order. (d) Plot of resonant frequencies of normal and parametric resonances ( $n = 2$  and  $4$ ) from the 1<sup>st</sup> order to the 5<sup>th</sup> order.

where  $\omega_n$  and  $f_n = \omega_n/2\pi$  are the parametric angular frequency and frequency,  $n$  is the parametric mode ( $n = 1, 2, \dots$ ), and  $\omega_i$  and  $f_i = \omega_i/2\pi$  are the normal mode angular frequency and frequency. To clarify the notation of different orders at different parametric modes,  $n$  denotes the parametric modes, with  $n = 2$  for normal mode resonance, and  $n = 4$  for the 2<sup>nd</sup> parametric mode. And  $i$  represents the resonance orders at the same parametric mode, from the 1<sup>st</sup> order to the 5<sup>th</sup> order, for both normal and 2<sup>nd</sup> parametric modes. Simulated resonating shapes up to the 5<sup>th</sup> order from the E-B beam theory are presented in Fig. 3(c). More details for different resonating Si NWs at different modes are provided in Fig. S5–S6.† It is worth mentioning that the resonant frequency of the 4<sup>th</sup> order at  $n = 4$

is close to the resonant frequency of the 3<sup>rd</sup> order at  $n = 2$ . *In situ* TEM observations and measurements have the advantage of directly recording the shape of the resonating NW to unambiguously identify the resonant mode and order. The ratios of node intervals from the TEM images of the resonating shapes are well consistent with the theoretically calculated values as listed in Table S2.† The resonant frequencies are plotted against the resonance orders for both normal and parametric modes (Fig. 3(d)), where black solid circles mark the normal mode at  $\omega_i$  ( $n = 2$ ) and blue triangles represent the parametric mode at  $\omega_i/2$  ( $n = 4$ ). The ratios of frequencies between the two modes are calculated to be close to  $\beta_i^2/\beta_j^2$  (Fig. S7†), where  $j$  denotes the mode order, consistent with the prediction from eqn (3). The ratio between two parametric resonances is described in eqn (4). The ratio of  $\omega_4/\omega_2$  is plotted in Fig. S8;† revealing a good agreement with the theoretically predicted value of 0.5. It is found that the deviations are reduced from 3.14% to 0.25% for the 1<sup>st</sup> and 5<sup>th</sup> orders, respectively.

It is noticed that the lower resonance orders could be excited in a wider frequency range compared to the higher orders. For example, for the 1<sup>st</sup> order, a 10 kHz sweeping step can easily locate the resonance. However, for the 5<sup>th</sup> order, the step needs to be 100 Hz, which is  $\sim 1$  ppm of a resonant frequency of  $\sim 100$  MHz. Such a converging trend for the resonance conditions could be understood from the analysis of the input, output and dissipated energies. In previous studies, energy dissipation has been attributed to environmental factors, such as viscosity, temperature, clamping loss, intrinsic defects, and the change of the elastic energy.<sup>11,15,16,37–42</sup> Here, we take advantage of the *in situ* technique to directly measure and calculate the input and output energies. The input energy can be assumed as the energy of a capacitor, between the free end of the Si NW and the W probe.<sup>30,43</sup> The energy stored in the capacitor ( $W_c$ ) is expressed as:

$$W_c = \frac{1}{2} QV = \frac{1}{2} \left( \frac{2\varepsilon_0}{d} \frac{A_{Si}A_W}{A_{Si} + A_W} \right) (V_{dc} + V_p)^2 \quad (5)$$

where  $\varepsilon_0$  is the vacuum permittivity,  $d$  is the gap between the Si NW and W probe,  $V$  is the applied voltage,  $V = V_{dc} + V_p$ , and  $A_{Si}$  and  $A_W$  ( $A_W = \eta A_{Si}$ ) are the apex areas of the Si NW and W probe, where  $\eta$  is a geometric factor. The input energy and measured vibration amplitude at different mode orders are illustrated in Fig. 4. According to our calculations (see Note S8†), the potential energy stored in the oscillating Si NW increases with increasing mode order, assuming the same vibration amplitude. The energy dissipation is predicted to increase with the resonant modes, when comparing the energy difference between the input and output energies (see Note S9†). This indicates that higher input energy is needed, and stricter conditions are required to induce high-order modes. It should be emphasized that previously only the 2<sup>nd</sup> order was observed for Si NW resonators.<sup>20</sup> In Note S10,† the intrinsic and extrinsic limits for observing high resonant mode order have been analysed. For the first time, our work demonstrates that up to the 5<sup>th</sup> order of normal and parametric resonances could be realized and directly observed by *in situ* TEM.

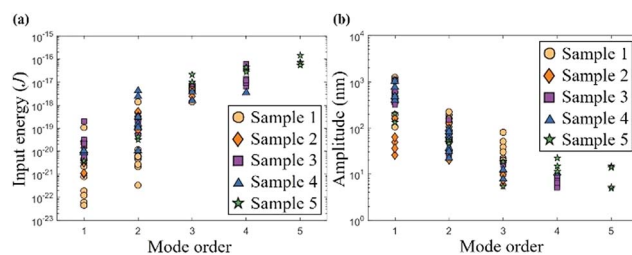


Fig. 4 Input energy and measured vibration amplitude at different resonant mode orders. (a) Input energy for five Si NW samples. Higher input energy and more strict resonant conditions are required for higher mode orders. (b) The measured vibration amplitudes decrease with the mode order, indicating higher energy dissipation and more strict resonant conditions for higher orders.

### Evaluation of the Si NW's modulus and absence of size-effects

The strict resonant requirement at high-order modes provides an opportunity to precisely evaluate the elastic modulus of Si NWs. By calculations from eqn (3) using the frequencies of the 2<sup>nd</sup> resonance order, it is found that the effective modulus of the NW is in the range between  $\sim 124$  GPa and  $\sim 160$  GPa (Fig. 5), depending on the thickness of the oxide layer. The HRTEM image (Fig. 1(c)) reveals that the Si NW grows along the [110] direction and its surface is covered by a thin SiO<sub>2</sub> layer. Therefore, the Si NW can be modelled as a core-shell structure, where the bulk Si<sub>(110)</sub> NW serves as the core and the SiO<sub>2</sub> layer as the shell. The elastic modulus of the core-shell structure ( $E_{cs}$ ) can be calculated using the flexural rigidity model:<sup>27</sup>

$$E_{cs} = \alpha E_{core} + (1 - \alpha) E_{shell} \quad (6)$$

where  $E_{core}$  is the Young's modulus of bulk Si along the [110] direction and  $E_{shell}$  is the modulus of SiO<sub>2</sub> ( $E_{SiO_2}$ ).  $\alpha = (D_{core}/D_{shell})^4$ , where  $D_{core}$  is the diameter of core Si and  $D_{shell}$  is the

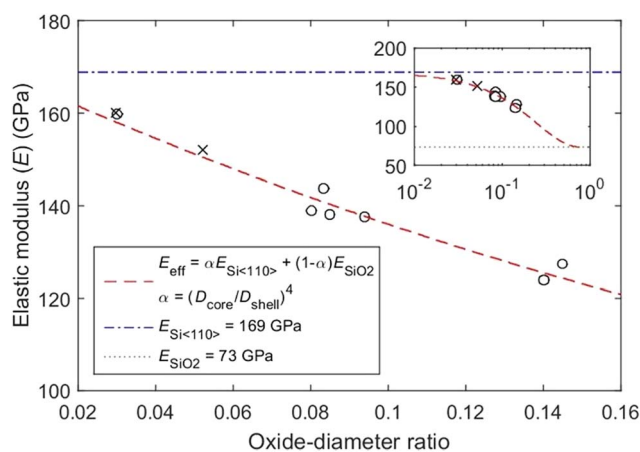


Fig. 5 Elastic moduli predicted from the core-shell model and experimentally measured results. Circles are calculated by considering the normal mode ( $n = 2$ ), and crosses are derived using the parametric mode ( $n = 4$ ). The inset presents the full range modelling from pure Si<sub>(110)</sub> to pure SiO<sub>2</sub> of the core-shell NW. Blue dashed and green dotted lines represent the moduli of bulk Si<sub>(110)</sub> and SiO<sub>2</sub>, respectively.

diameter of the whole Si NW; the SiO<sub>2</sub> layer thickness is equal to  $(D_{\text{shell}} - D_{\text{core}})/2$ .  $E_{\text{cs}}$  is equal to  $E_{\text{eff}}$  of the Si NW derived using eqn (3) as:

$$E_{\text{eff}} = \rho \left( \frac{8\pi L^2}{\beta_i^2 D} f_i \right)^2 \quad (7)$$

To be noticed, a nanoparticle has been observed attached on the free-end of the Si NW (Fig. 1(a)). The nanoparticle is the gold particle used as the catalyst in VLS growth, which can be considered as an added mass to cause a shift in the resonant frequency of  $\sim 2\%$ ; and an error in the  $E_{\text{eff}}$  of  $\sim 0.77\%$ , as calculated in Note S11.† Here, we defined an oxide–diameter ratio as the thickness of the SiO<sub>2</sub> layer divided by the diameter ( $D$ ) of the Si NW. The model predicts an oxide–diameter ratio ranging from  $\sim 0.02$  to  $\sim 0.15$  (Fig. 5), and offers a full range simulation (Fig. 5 inset) under the combination of  $E_{\text{Si}(110)}$  ( $\sim 169$  GPa),<sup>44</sup>  $E_{\text{SiO}_2}$  ( $\sim 73$  GPa)<sup>45</sup> and  $\alpha$ . Comparing the experimental data of the 2<sup>nd</sup> order with the flexural rigidity model (Fig. 5), the coefficient of determination ( $R^2$ ) is 0.97, which indicates that the model provides a reliable description of the experimental data for a diameter ( $D_{\text{core}}$ ) ranging from  $\sim 19$  nm to  $\sim 33$  nm. Importantly, the Si NW displays no size-effects within this diameter range, and the modulus is consistent with that of the bulk crystals, confirming the validity of the classical continuum mechanics at the NW sizes down to  $\sim 20$  nm.

Elasticity and size-effects of Si NWs have been intensively investigated, and controversial results have been reported, and the feasibility of continuum mechanics is also controversial.<sup>21,23,29,46</sup> For example, Zhu *et al.* applied tensile tests to measure the mechanical properties of Si NWs and demonstrated that the Young's modulus decreases upon reducing the size of the NWs.<sup>23</sup> There are two models, one is the continuum model on the macroscale and the other is the atomic model. In the continuum system, the NW is considered as a homogeneous and linear elastic material; in the atomic model, the nature of the individual bonding interactions presents the mechanical properties of an oscillating chain of atoms. According to the literature,<sup>47,48</sup> molecular dynamics (MD) simulations and first principles calculations were used to simulate the elastic modulus of the Si NWs. Surface effects, such as surface elasticity and bonding on the NW's surface, have been addressed as the main factors of size-effects. The surface area to volume ratio ( $R_s$ ) is a parameter used to evaluate size-effects ( $R_s = 4a/D$  where  $a$  is the interatomic distance, approximately 0.2 nm). Numerical results show that when  $R_s$  is smaller than  $\sim 8\%$ ,<sup>48</sup> the surface effects show minor contribution to the elastic modulus. In our work,  $R_s$  is estimated to be  $\sim 4\%$ , with the smallest diameter being  $\sim 20$  nm. In addition, the surface of the Si NWs is covered by an oxide layer, which saturates the dangling bonds of the Si surface. Because of the small proportion of surface atoms and surface saturation it is reasonable that size-effects are absent down to the 20 nm level. We have analysed the different size scaling behaviours from three aspects, by comparing our work with Zhu *et al.*'s paper<sup>23</sup> as an example. First, different experimental methods have been used. We used the resonance

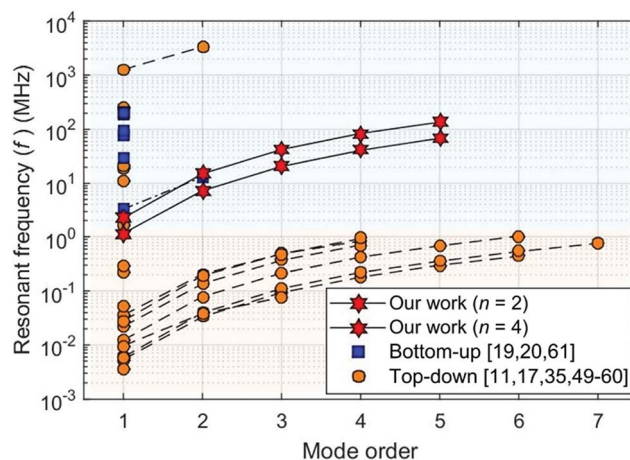


Fig. 6 Comparison of the resonant frequency and the mode order of Si resonators. The square and circle marks represent the results from the bottom-up and top-down approaches, respectively. Si NW resonators in the current work (red stars) demonstrate the high-order and high frequency working regime.

method and previous work used the tensile elongation method. Second, different models have been considered. We have considered the effect of the surface oxide layer by using a core-shell model, instead of the oxide layer-free model in previous work. Third, the size range is different. The size related softening effects were reported to be strong in the sub-20 nm region, and the minimum diameter in our work is  $\sim 20$  nm.

### Comparison of resonant frequency and mode orders of Si resonators

As discussed in the Introduction, the sensitivity of mechanical resonators is related to the resonant frequency, mode order and oscillator's mass. Fig. 6 presents a plot of the resonant frequency and the mode order of micro/nano-Si resonators fabricated using a top-down approach<sup>11,17,35,49–60</sup> compared to nano-Si resonators made using a bottom-up approach.<sup>19,20,61</sup> Generally, top-down Si micro/nano-resonators can demonstrate very high resonant mode orders at low frequencies due to the micrometer size.<sup>11,17,52,59</sup> To enhance the frequency and reduce the mass of the resonators, NW resonators have been intensively investigated during the past two decades. Indeed, very high frequency resonators, at approximately 200 MHz, have been demonstrated.<sup>19</sup> However, up to now, only the 1<sup>st</sup> and the 2<sup>nd</sup> orders of normal mode resonances have been realized in NW resonators.<sup>20</sup> By contrast, in the current work, the full potential of Si NW resonators has been demonstrated by *in situ* TEM measurements and direct observations. Normal and parametric resonances up to the 5<sup>th</sup> order were realized and directly observed at frequencies of  $\sim 100$  MHz level.

## Conclusions

By using an *in situ* TEM method, we realized and directly observed both normal and parametric modes of Si NW resonators, up to the 5<sup>th</sup> order, at the resonant frequencies of  $\sim 100$

MHz. The frequencies and ratios of different mode orders and parametric resonances were consistent with the prediction of the classical Euler–Bernoulli beam theory and the parametric resonance derived by the Mathieu equation, implying that the continuum model is valid down to the nanometer scale. The resonating ranges demonstrated a converging trend with increasing mode orders and resonant frequencies, implying the potential applications for precise sensors at high-order resonant modes. The elastic moduli of the Si NWs have been accurately evaluated, and no size-effects were found for the NW diameter down to 20 nm.

## Conflicts of interest

There are no conflicts to declare.

## Acknowledgements

The work was supported by JSPS Kakenhi Grant 25820336, the Transmission Electron Microscopy Station, World Premier International (WPI) Center for Materials Nanoarchitectonics (MANA), National Institute for Materials Science (NIMS), Japan, National Cheng Kung University (NCKU), Ministry of Science and Technology of Taiwan (MOST-105-2218-E-006-016-MY2 and MOST-107-2634-F-006-009), and MOST AI Biomedical Research Center at NCKU. F.-C. H. acknowledges the scholarships from the NIMS internship program and Global Networking Talent 3.0 Plan – Biomedical Engineering sponsored by the Medical Device Innovation Center at NCKU and the Ministry of Education, Taiwan. D. G. is grateful to the Australian Research Council (ARC) for granting a Laureate Fellowship FL160100089 and QUT Project No. 322170-0355/51.

## Notes and references

- 1 J. S. Bunch, A. M. van der Zande, S. S. Verbridge, I. W. Frank, D. M. Tanenbaum, J. M. Parpia, H. G. Craighead and P. L. McEuen, *Science*, 2007, **315**, 490–493.
- 2 *Resonant MEMS*, ed. O. Brand, I. Dufour, S. M. Heinrich and F. Josse, Wiley-VCH Verlag GmbH & Co. KGaA, Weinheim, Germany, 2015.
- 3 K. L. Ekinici and M. L. Roukes, *Rev. Sci. Instrum.*, 2005, **76**, 061101.
- 4 H. G. Craighead, *Science*, 2000, **290**, 1532–1535.
- 5 K. Jensen, J. Weldon, H. Garcia and A. Zettl, *Nano Lett.*, 2007, **7**, 3508–3511.
- 6 T. P. Burg, M. Godin, S. M. Knudsen, W. Shen, G. Carlson, J. S. Foster, K. Babcock and S. R. Manalis, *Nature*, 2007, **446**, 1066–1069.
- 7 M. Calleja, M. Nordström, M. Álvarez, J. Tamayo, L. M. Lechuga and A. Boisen, *Ultramicroscopy*, 2005, **105**, 215–222.
- 8 K. Jensen, K. Kim and A. Zettl, *Nat. Nanotechnol.*, 2008, **3**, 533–537.
- 9 P. Poncharal, *Science*, 1999, **283**, 1513–1516.
- 10 Y. T. Yang, C. Callegari, X. L. Feng, K. L. Ekinici and M. L. Roukes, *Nano Lett.*, 2006, **6**, 583–586.
- 11 M. K. Ghatkesar, V. Barwich, T. Braun, J.-P. Ramseyer, C. Gerber, M. Hegner, H. P. Lang, U. Drechsler and M. Despont, *Nanotechnology*, 2007, **18**, 445502.
- 12 T. Braun, V. Barwich, M. K. Ghatkesar, A. H. Bredekamp, C. Gerber, M. Hegner and H. P. Lang, *Phys. Rev. E: Stat., Nonlinear, Soft Matter Phys.*, 2005, **72**, 031907.
- 13 C. A. Van Eysden and J. E. Sader, *J. Appl. Phys.*, 2007, **101**, 044908.
- 14 L. B. Biedermann, R. C. Tung, A. Raman, R. G. Reifenberger, M. M. Yazdanpanah and R. W. Cohn, *Nanotechnology*, 2010, **21**, 305701.
- 15 J. H. Ko, J. Jeong, J. Choi and M. Cho, *Appl. Phys. Lett.*, 2011, **98**, 171909.
- 16 J. E. Sader, J. Lee and S. R. Manalis, *J. Appl. Phys.*, 2010, **108**, 114507.
- 17 J. P. Killgore and D. C. Hurley, *Nanotechnology*, 2012, **23**, 055702.
- 18 Y. Jia, S. Du, E. Arroyo and A. A. Seshia, *Appl. Phys. Lett.*, 2018, **112**, 171901.
- 19 X. L. Feng, R. He, P. Yang and M. L. Roukes, *Nano Lett.*, 2007, **7**, 1953–1959.
- 20 O. Malvar, E. Gil-Santos, J. J. Ruz, D. Ramos, V. Pini, M. Fernandez-Regulez, M. Calleja, J. Tamayo and A. San Paulo, *Appl. Phys. Lett.*, 2013, **103**, 033101.
- 21 Y. Calahorra, O. Shtempluck, V. Kotchetkov and Y. E. Yaish, *Nano Lett.*, 2015, **15**, 2945–2950.
- 22 H. Zhang, J. Tersoff, S. Xu, H. Chen, Q. Zhang, K. Zhang, Y. Yang, C.-S. Lee, K.-N. Tu, J. Li and Y. Lu, *Sci. Adv.*, 2016, **2**, e1501382.
- 23 Y. Zhu, F. Xu, Q. Qin, W. Y. Fung and W. Lu, *Nano Lett.*, 2009, **9**, 3934–3939.
- 24 C.-L. Hsin, W. Mai, Y. Gu, Y. Gao, C.-T. Huang, Y. Liu, L.-J. Chen and Z.-L. Wang, *Adv. Mater.*, 2008, **20**, 3919–3923.
- 25 K. Zhang, Q. Zhu and Z. Chen, *Sensors*, 2017, **17**, 1621.
- 26 A. San Paulo, J. Bokor, R. T. Howe, R. He, P. Yang, D. Gao, C. Carraro and R. Maboudian, *Appl. Phys. Lett.*, 2005, **87**, 053111.
- 27 M. J. Gordon, T. Baron, F. Dhalluin, P. Gentile and P. Ferret, *Nano Lett.*, 2009, **9**, 525–529.
- 28 M. Tabib-Azar, M. Nassirou, R. Wang, S. Sharma, T. I. Kamins, M. S. Islam and R. S. Williams, *Appl. Phys. Lett.*, 2005, **87**, 113102.
- 29 Y.-S. Sohn, J. Park, G. Yoon, J. Song, S.-W. Jee, J.-H. Lee, S. Na, T. Kwon and K. Eom, *Nanoscale Res. Lett.*, 2010, **5**, 211–216.
- 30 D. Garcia-Sanchez, A. San Paulo, M. J. Esplandiu, F. Perez-Murano, L. Forró, A. Aguasca and A. Bachtold, *Phys. Rev. Lett.*, 2007, **99**, 085501.
- 31 D.-M. Tang, C.-L. Ren, M.-S. Wang, X. Wei, N. Kawamoto, C. Liu, Y. Bando, M. Mitome, N. Fukata and D. Golberg, *Nano Lett.*, 2012, **12**, 1898–1904.
- 32 N. Fukata, M. Mitome, T. Sekiguchi, Y. Bando, M. Kirkham, J.-I. Hong, Z. L. Wang and R. L. Snyder, *ACS Nano*, 2012, **6**, 8887–8895.
- 33 S. S. Rao and F. F. Yap, *Mechanical Vibrations*, Prentice Hall Upper Saddle River, 2011, vol. 4.
- 34 A. H. Nayfeh and D. T. Mook, *Nonlinear Oscillations*, John Wiley & Sons, 2008.

- 35 K. L. Turner, S. A. Miller, P. G. Hartwell, N. C. MacDonald, S. H. Strogatz and S. G. Adams, *Nature*, 1998, **396**, 149–152.
- 36 M.-F. Yu, G. J. Wagner, R. S. Ruoff and M. J. Dyer, *Phys. Rev. B: Condens. Matter Mater. Phys.*, 2002, **66**, 073406.
- 37 S. S. Verbridge, D. F. Shapiro, H. G. Craighead and J. M. Parpia, *Nano Lett.*, 2007, **7**, 1728–1735.
- 38 T. P. Burg, J. E. Sader and S. R. Manalis, *Phys. Rev. Lett.*, 2009, **102**, 228103.
- 39 D. A. Harrington, P. Mohanty and M. L. Roukes, *Phys. B*, 2000, **284–288**, 2145–2146.
- 40 S. Schmid and C. Hierold, *J. Appl. Phys.*, 2008, **104**, 093516.
- 41 Q. P. Unterreithmeier, T. Faust and J. P. Kotthaus, *Phys. Rev. Lett.*, 2010, **105**, 027205.
- 42 M. Imboden and P. Mohanty, *Phys. Rep.*, 2014, **534**, 89–146.
- 43 S. Perisanu, V. Gouttenoire, P. Vincent, A. Ayari, M. Choueib, M. Bechelany, D. Cornu and S. T. Purcell, *Phys. Rev. B*, 2008, **77**, 165434.
- 44 M. A. Hopcroft, W. D. Nix and T. W. Kenny, *J. Microelectromech. Syst.*, 2010, **19**, 229–238.
- 45 H. Ni, X. Li and H. Gao, *Appl. Phys. Lett.*, 2006, **88**, 043108.
- 46 M. J. Gordon, T. Baron, F. Dhalluin, P. Gentile and P. Ferret, *Nano Lett.*, 2009, **9**, 525–529.
- 47 H. N. Pishkenari, B. Afsharmanesh and E. Akbari, *Curr. Appl. Phys.*, 2015, **15**, 1389–1396.
- 48 R. E. Rudd and B. Lee, *Mol. Simul.*, 2008, **34**, 1–8.
- 49 A. Labuda, M. Kocun, M. Lysy, T. Walsh, J. Meinhold, T. Proksch, W. Meinhold, C. Anderson and R. Proksch, *Rev. Sci. Instrum.*, 2016, **87**, 073705.
- 50 W. C. Jiang, X. Lu, J. Zhang and Q. Lin, *Opt. Express*, 2012, **20**, 15991.
- 51 J. Yang, T. Ono and M. Esashi, *J. Microelectromech. Syst.*, 2002, **11**, 775–783.
- 52 R. S. Gates, W. A. Osborn and J. R. Pratt, *Nanotechnology*, 2013, **24**, 255706.
- 53 I. Bargatin, E. B. Myers, J. S. Aldridge, C. Marcoux, P. Brianceau, L. Duraffourg, E. Colinet, S. Hentz, P. Andreucci and M. L. Roukes, *Nano Lett.*, 2012, **12**, 1269–1274.
- 54 D. W. Carr, S. Evoy, L. Sekaric, H. G. Craighead and J. M. Parpia, *Appl. Phys. Lett.*, 1999, **75**, 920–922.
- 55 M. Nasr Esfahani, Y. Kilinc, M. Çagatay Karakan, E. Orhan, M. S. Hanay, Y. Leblebici and B. Erdem Alaca, *J. Micromech. Microeng.*, 2018, **28**, 045006.
- 56 A. Koumela, D. Mercier, V. Gouttenoire, C. Marcoux, S. T. Purcell and L. Duraffourg, *Procedia Eng.*, 2011, **25**, 1649–1652.
- 57 X. Li, T. Ono, Y. Wang and M. Esashi, *Appl. Phys. Lett.*, 2003, **83**, 3081–3083.
- 58 T. Tsushima, Y. Asahi, H. Tanigawa, T. Furutsuka and K. Suzuki, *Jpn. J. Appl. Phys.*, 2018, **57**, 067201.
- 59 T. Ikehara, J. Lu, M. Konno, R. Maeda and T. Mihara, *J. Micromech. Microeng.*, 2007, **17**, 2491–2494.
- 60 M. Li, W. H. P. Pernice and H. X. Tang, *Nat. Nanotechnol.*, 2009, **4**, 377–382.
- 61 R. He, X. L. Feng, M. L. Roukes and P. Yang, *Nano Lett.*, 2008, **8**, 1756–1761.