



Since January 2020 Elsevier has created a COVID-19 resource centre with free information in English and Mandarin on the novel coronavirus COVID-19. The COVID-19 resource centre is hosted on Elsevier Connect, the company's public news and information website.

Elsevier hereby grants permission to make all its COVID-19-related research that is available on the COVID-19 resource centre - including this research content - immediately available in PubMed Central and other publicly funded repositories, such as the WHO COVID database with rights for unrestricted research re-use and analyses in any form or by any means with acknowledgement of the original source. These permissions are granted for free by Elsevier for as long as the COVID-19 resource centre remains active.



## IMAGES IN INTENSIVE MEDICINE

### Diagnosis of pneumonia in Intensive Care using color Doppler

### Diagnóstico de neumonía en Cuidados Intensivos mediante doppler color

A. Gómez Carranza<sup>a,\*</sup>, A. Santos Peral<sup>b</sup>, R. Ortiz Díaz-Miguel<sup>b</sup>

<sup>a</sup> Servicio de Medicina Intensiva, Hospital Universitario Poniente, El Ejido, Almería, Spain

<sup>b</sup> Servicio de Medicina Intensiva, Hospital General Universitario de Ciudad Real, Ciudad Real, Spain

Available online 8 September 2022

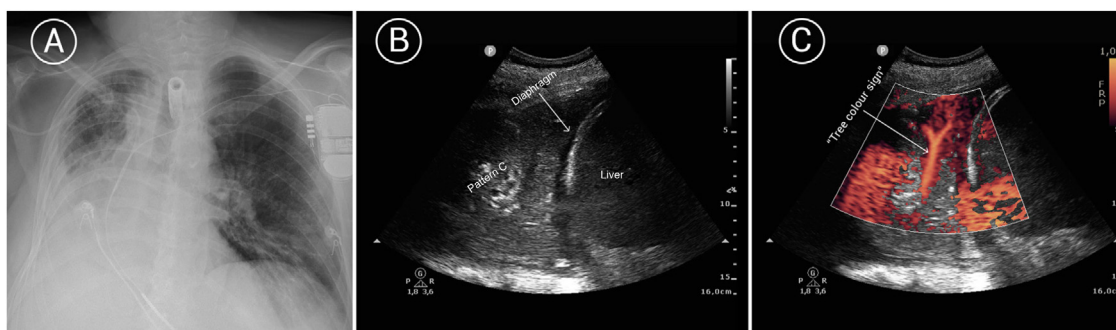


Figure 1

A 42-year-old male carrying an implantable automatic defibrillator (IAD) was admitted to the Intensive Care Unit due to bilateral pneumonia secondary to SARS-CoV-2 infection.

On day 22 of admission, he experienced sudden respiratory and hemodynamic worsening, with a need for vasoactive drugs and increased FiO<sub>2</sub> demands. There was no fever or elevation of infection markers. Echocardiography discarded indirect signs of pulmonary thromboembolism. The chest radiography (Fig. 1 Image A) evidenced a clear worsening of the right hemithorax. Pulmonary ultrasound in turn revealed a pattern C (Fig. 1 Image B) in the right lung base that could correspond to atelectasis or pneumonia. Color Doppler (Appendix A image C and enclosed

DOI of original article: <https://doi.org/10.1016/j.medint.2021.08.003>

Abbreviations: IAD, implantable automatic defibrillator.

\* Corresponding author.

E-mail address: [goca.alejandro@gmail.com](mailto:goca.alejandro@gmail.com)

(A. Gómez Carranza).

<https://doi.org/10.1016/j.medint.2021.08.016>

2173-5727/© 2021 Elsevier España, S.L.U. and SEMICYUC. All rights reserved.

video) revealed a tree-like color sign, corresponding to blood hyper-flow. This finding, together with the dynamic pattern C (fluctuating with inspiration) was consistent with pneumonic condensation.

## **Appendix A. Supplementary data**

Supplementary material related to this article can be found, in the online version, at doi:<https://doi.org/10.1016/j.medine.2021.08.016>.