

The Burden of Community-Acquired Pneumonia Requiring Admission to ICU in the United States



Rodrigo Cavallazzi, MD; Stephen Furmanek, MS; Forest W. Arnold, DO; Leslie A. Beavin, MD; Richard G. Wunderink, MD; Michael S. Niederman, MD; and Julio A. Ramirez, MD

BACKGROUND: A paucity of studies have assessed the epidemiology of community-acquired pneumonia (CAP) that require ICU admission. We conducted a study on this group of patients with the primary objective of defining the incidence, epidemiology, and mortality rate of CAP in the ICUs in Louisville, Kentucky. The secondary objective was to estimate the number of patients who were hospitalized and the number of deaths that were associated with CAP in ICU in the United States.

RESEARCH QUESTIONS: What is epidemiology of CAP in the ICU in Louisville, Kentucky, and the projected incidence in the United States?

STUDY DESIGN AND METHODS: This was a secondary analysis of a prospective population-based cohort study. The setting was all nine adult hospitals in Louisville, Kentucky. The annual incidence of CAP in the ICU per 100,000 adults was calculated for the whole adult population of Louisville. The number of patients who were hospitalized because of CAP in ICU in the United States was estimated by multiplying the Louisville incidence rate of CAP in ICU by the 2014 US adult population.

RESULTS: From a total of 7,449 unique patients who were hospitalized with CAP, 1,707 patients (23%) were admitted to the ICU. The incidence of CAP in the ICU was 145 cases per 100,000 population of adults. Cases of CAP in the ICU were clustered in patients from areas of the city with high poverty. The mortality rate of patients with CAP in ICU was 27% at 30 days and 47% at one year. In the United States, the estimated number of patients who were hospitalized with CAP requiring the ICU was 356,326 per year, and the estimated number of deaths at 30 days and one year were 96,206 and 167,474, respectively.

INTERPRETATION: Almost one in five patients who are hospitalized with CAP requires intensive care. Poverty is associated with CAP in the ICU. Nearly one-half of patients with CAP in the ICU will die within one year. Because of its significant burden, CAP in the ICU should be a high priority in research agenda and health policy. CHEST 2020; 158(3):1008-1016

KEY WORDS: epidemiology; incidence; pneumonia

FOR EDITORIAL COMMENT, SEE PAGE 841

ABBREVIATIONS: CAP = community-acquired pneumonia; IDSA/ATS = Infectious Diseases Society of America/American Thoracic Society

AFFILIATIONS: From the Divisions of Pulmonary, Critical Care Medicine, and Sleep Disorders (Dr Cavallazzi) and Infectious Diseases (Drs Arnold, Beavin, and Ramirez and Mr Furmanek), University of Louisville, Louisville, KY; the Pulmonary and Critical Care Division (Dr Wunderink), Northwestern University Feinberg School of Medicine, Chicago, IL; and the Division of Pulmonary and Critical Care Medicine (Dr Niederman), Weill Cornell Medical College, New York, NY.

FUNDING/SUPPORT: This manuscript was supported by the Division of Infectious Diseases, University of Louisville, Kentucky. Pfizer Inc provided an unrestricted research grant to support the University of Louisville Center of Excellence for Research in Infectious Diseases. The Center was coordinating the study.

CORRESPONDENCE TO: Rodrigo Cavallazzi, MD, Division of Pulmonary, Critical Care, and Sleep Disorders Medicine, 550 S Jackson St, ACB, A3R27, Louisville, KY 40202; e-mail: r0cava01@louisville.edu
Published by Elsevier Inc. under license from the American College of Chest Physicians.

DOI: <https://doi.org/10.1016/j.chest.2020.03.051>

Community-acquired pneumonia (CAP) that requires admission to the ICU represents 9% to 14% of all cases of CAP that require hospitalization.¹⁻⁴ Although CAP is associated with a mortality rate of <1% in the outpatient setting¹ and between 8% and 10.6% in different cohorts of hospitalized patients,^{1,5,6} a mortality rate of 24% was recently reported for those who require the ICU.⁷ Even if patients with CAP in the ICU survive to discharge from the hospital, they experience lasting consequences from the pneumonia and have a higher long-term mortality rate compared with other groups of patients who required hospitalization.⁸

To fully understand the impact of CAP in the ICU, estimates of its incidence and characterization of epidemiology are important. Recently, our group conducted a population-based study over 2 years of all cases of CAP that required admission to all adult

hospitals in Louisville, Kentucky. Data were obtained by research staff who reviewed every record and gathered clinical information. This allowed us to define the incidence of hospitalizations because of CAP in Louisville, to estimate the number of hospitalizations because of CAP in the United States, and to epidemiologically and clinically characterize this patient population.⁹ Recognizing the knowledge gap regarding incidence and epidemiology of CAP in the ICU in the United States, we focused on the subgroup of patients with CAP in the ICU from that cohort.

The primary objective was to define the incidence, epidemiology, and mortality rate of patients with CAP in ICUs in Louisville, Kentucky. The secondary objective was to estimate the number of patients who are hospitalized with CAP in the ICU and the number of deaths because of CAP in ICUs in the United States.

Methods

Study Design

This was an ancillary study to the University of Louisville Pneumonia Study, which was a population-based cohort study that included residents in Louisville, who experienced CAP and required hospitalization from June 1, 2014, to May 31, 2016. Details of the study were published previously.⁹⁻¹¹ All nine adult hospitals in Louisville were sites for this study. This study was approved by the University of Louisville Institutional Review Board (IRB number 11.0613) and each hospital's research department. Informed consent was waived.

Inclusion and Exclusion Criteria

We defined CAP as the presence of a new pulmonary infiltrate and at least one of the following: (1) a new cough or increased sputum or sputum production, (2) fever or hypothermia, and (3) leukocytosis or leukopenia. Patients were excluded if an alternative diagnosis at discharge could justify the presence of the aforementioned criteria.⁹ The intent was to enroll patients with CAP who lived in Louisville and who were counted in the 2010 US Census. Thus, patients were excluded if they (1) did not have a permanent or valid Louisville address based on US Census Bureau data, (2) did not have a valid social security number, and (3) were in a correctional system. Exclusions were not based on immune status, nursing home residence, or recent hospitalization. Patients who experienced pneumonia >48 hours after admission were considered to have nosocomial pneumonia and were excluded. A recent prior hospitalization was not an exclusion criterion.

ICU admission was characterized as early and late depending on the day of hospital admission. Early ICU admission was characterized as ICU admission on the day of hospital admission. ICU admission after the day of hospital admission was characterized as late ICU admission.

Data Collection

On a daily basis, research associates screened patients for CAP in the participating sites. We collected data on demographics, comorbidities, physical examination findings, and laboratory test results. To evaluate severity of disease, we obtained data to calculate Pneumonia Severity Index risk class, CURB (confusion, urea, respiratory rate, and BP)-65 score, qSOFA (sepsis-related organ

failure assessment) score, and American Thoracic Society criteria for severe CAP. Data were entered into a Health Insurance Portability and Accountability Act of 1996-protected online platform, and data quality assessment was performed.

Incidence Calculations and Statistical Analyses

The annual incidence of CAP in the ICU per 100,000 adults was calculated for the whole adult population of Louisville and subpopulations according to age brackets and comorbidities. The number of patients hospitalized because of CAP in the ICU in the United States was estimated by multiplying the Louisville incidence rate of CAP in the ICU by the 2014 US adult population extrapolated from the 2010 US Census. The annual incidence of CAP in the ICU by comorbidities was obtained by dividing the average annual number of patients who were hospitalized with CAP in the ICU by the number of patients with each comorbidity in Louisville. The denominators for comorbidities were obtained by multiplying the estimated prevalence of each comorbidity by the 2014 estimated adult Louisville population. The Louisville 2014 Behavioral Risk Factor Surveillance System generated the prevalence multipliers for each comorbidity. For COPD, data from the 2014 National Health Interview Survey were also used to obtain the multiplier. Baseline categorical data are presented as frequency and percentage, while continuous data are presented as median and interquartile range. Categorical and continuous data were analyzed with Binomial and Gaussian family Generalized Estimating Equations, respectively, to account for patient within hospital correlation. Probability values that were reported are adjusted for family-wise error rate by Holm's method. Time-to-death analysis, up to one year, was performed for all unique patients. Kaplan-Meier curves were plotted to compare early and late ICU admission for survival estimates. A stratified, multivariable Cox proportional hazards regression was performed to assess the impact of demographics, risk factors, and comorbidities simultaneously. Strata correspond to the hospital. A probability value <.05 was considered statistically significant. Analysis was performed with R statistical software.

Geospatial Epidemiology

A description of the geospatial analyses was previously provided.⁹ Briefly, heatmaps of unique patients with CAP in the ICU in

Louisville were created by obtaining the geomasked location of the home address of each patient through the US Census Bureau website.¹² Areas of significant risk for CAP in the ICU were identified via spatial scan statistic proposed by Kulldorff.¹³ Associations between CAP in the ICU and other variables were assessed by choropleth maps. These variables, at the census tract level, were taken from the American Community Survey 2014 5-year estimates.¹⁴ All geospatial analyses were done with ArcGIS 10.4 (Environmental Systems Research Institute, Redlands, CA) and SaTScan (version 9.5; Information Management Services, Inc).

Results

A total of 7,449 unique patients with CAP who required hospitalization were included in the cohort. During the 2 years of the study, a total of 1,946 ICU admissions because of CAP were documented. We identified 239 patients with CAP who were admitted to the ICU during an episode of rehospitalization. After excluding patients who were readmitted to the hospital with CAP in the ICU, the cases for a total of 1,707 unique patients (23%) with CAP who required ICU admission were analyzed. The study flowchart is shown in [Figure 1](#). The baseline characteristics of the population of hospitalized patients with CAP who were admitted to the ICU on the day of hospital admission, the patients who were admitted to the ICU after the day of hospital admission, and the patients who were never admitted to the ICU are given in [Table 1](#). The median age was 67 years (interquartile range, 56, 78), and slightly less than one-half of them were women. ICU admission on the day of hospitalization occurred in 1,275 (75%) of the patients who were admitted to the ICU. A total of 414 patients (24%) required invasive mechanical ventilation, and 346 patients (20%) required noninvasive ventilation. From a total of 4,538 patients who did not meet Infectious Diseases Society of America/American Thoracic Society (IDSA/ATS) criteria for ICU admission, 431 patients (9%) were admitted to the ICU. From a total of 2,911 patients who met IDSA/ATS criteria for ICU admission, 1,276 patients (44%) were admitted to the ICU. [Table 2](#) shows severity scores on the day of hospital. [e-Tables 1](#) and [2](#) display the characteristics of the population with CAP in the ICU according to whether they were dead or alive in different time frames.

Incidence of Patients With CAP in the ICU

The annual incidence of adult patients with CAP in the ICU in Louisville was 145 persons per 100,000 adult population. The incidence increased with age ([e-Fig 1](#)). Underlying chronic diseases have an important impact

Death

All-cause in-hospital death was evaluated during hospitalization; death at 15 days, 30 days, 6 months, and one year after hospitalization for unique patients was confirmed via death certificate review that was obtained through the Kentucky Department for Public Health Office of Vital Statistics. Death was reported as the percentage of deaths and number of persons per 100,000 adults at these different time points. The number of deaths in patients with CAP in the ICU for the United States was estimated by multiplying the Louisville incidence rate of death at each time point by the 2014 US adult population.

on the incidence of CAP in the ICU. COPD and congestive heart failure are the comorbidities associated with the highest incidence of CAP in the ICU ([e-Fig 2](#)). The estimated number of patients hospitalized with CAP in an ICU in the United States was 356,326 per year.

Geospatial Epidemiology

There was a clustering of CAP in ICU cases in the west side of Louisville. The population living in this section of the city had 1.83 times higher risk of experiencing CAP that required ICU care than elsewhere in the city ([Fig 2A](#)). The map of Louisville with the geomasked address of each patient who was hospitalized with CAP in the ICU with the area of the city with a relative risk of 1.83 was overlaid on 3 choropleth maps with the use of census tract-level data in relation to (1) percent poverty ([Fig 2B](#)), (2) percent black race ([Fig 2C](#)), and (3) percent ≥ 65 years of age ([Fig 2D](#)). Within the area of increased relative risk of CAP in the ICU, 82 census tracts (75%) were above the median percent poverty; 70 census tracts (64%) were above the median percent of black individuals, and only 40 census tracts (36%) were above the median percent ≥ 65 years of age.

Mortality Rate

The mortality rate of patients with CAP in the ICU during hospitalization was 17% (or 25 people per 100,000), at 30 days was 27% (or 40 people per 100,000), at 6 months was 39% (57 people per 100,000), and at one year was 47% (or 67 people per 100,000). The estimated number of in-hospital deaths yearly in patients with CAP in the ICU in the United States is 60,576. Among patients in the ICU, the in-hospital mortality rate was 11% for patients who did not meet IDSA/ATS criteria and 19% for patients who met the criteria. [Table 3](#) shows the mortality rates in patients with CAP in different time frames according to whether they had early (day 0) or late (after day 0) ICU

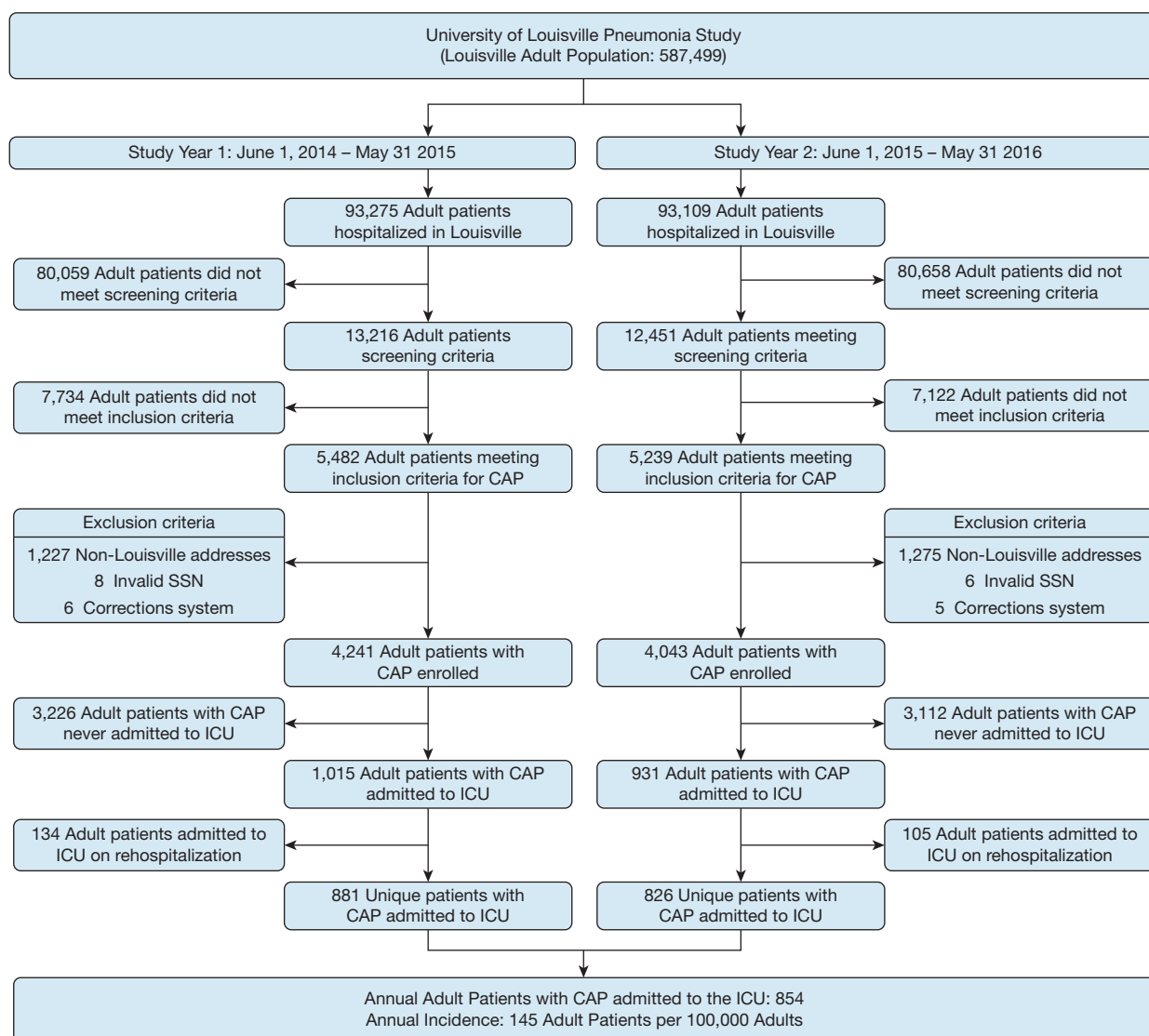


Figure 1 – Study flowchart. CAP = community-acquired pneumonia; SSN = social security number.

admission. Day 0 represents the day of hospital admission.

e-Figure 3 demonstrates Kaplan-Meier curves comparing early and late ICU admission for survival estimates up to one year. e-Figure 4 provides a stratified, multivariable Cox proportional hazards regression analysis that assesses the impact of demographics, risk factors, and comorbidities on mortality rates.

Discussion

We demonstrated that CAP in the ICU is common, with an incidence of 145 cases per 100,000 adults per year. The incidence increases with aging and the presence of comorbidities, of which congestive heart failure and COPD have the highest impact. An ecological association

suggests that adults living in impoverished areas are at increased risk for hospitalization because of CAP requiring admission to the ICU. Patients with CAP in the ICU are at high risk of death, as demonstrated by an in-hospital mortality rate of 17% and a one-year mortality rate approaching 50%. When the Louisville data are extrapolated to the United States, the estimated number of patients with CAP in the ICU is 356,326 per year, and the total number of deaths at one year is 167,474 patients per year.

Recently, Storms et al¹⁵ conducted a study that included 6 medical sites in the United States and calculated the rate of pneumonia hospitalization with ICU admission in adults as 76 per 100,000 population/year. Their figure is approximately one-half of what was obtained in our

TABLE 1] Patient Characteristics on Day of Hospitalization

| Characteristics | ICU Admission | | | P Value |
|---|----------------|----------------|----------------|---------|
| | Early | Late | None | |
| Total study population, No. | 1,275 | 432 | 5,742 | |
| Demographics | | | | |
| Age, median [interquartile range], y | 67 [56, 77] | 67 [56, 78] | 68 [56, 81] | .703 |
| Male sex, No. (%) | 659 (52) | 222 (51) | 2,562 (45) | .001 |
| Black race, No. (%) | 243 (19) | 93 (22) | 1,139 (20) | .671 |
| Social and medical history, frequency (%) | | | | |
| COPD | 657 (52) | 197 (46) | 2,621 (46) | < .001 |
| Renal disease | 523 (41) | 168 (39) | 1,494 (26) | < .001 |
| Diabetes mellitus | 473 (37) | 163 (38) | 1,797 (31) | < .001 |
| Congestive heart failure | 462 (36) | 173 (40) | 1,489 (26) | < .001 |
| Obese | 455 (36) | 149 (34) | 2,011 (35) | .703 |
| Current smoker | 459 (36) | 138 (32) | 1,746 (30) | .073 |
| Stroke | 184 (14) | 59 (14) | 713 (12) | .671 |
| Neoplastic disease | 164 (13) | 66 (15) | 760 (13) | .703 |
| Chronic renal failure | 131 (10) | 35 (8) | 362 (6) | .143 |
| HIV disease | 14 (1) | 6 (1) | 90 (2) | < .001 |
| Physical examination findings | | | | |
| Altered mental status, No. (%) | 541 (42) | 80 (19) | 786 (14) | < .001 |
| Heart rate, median [interquartile range], beats/min | 115 [99, 131] | 110 [94, 124] | 103 [90, 116] | < .001 |
| Respiratory rate, median [interquartile range], breaths/min | 29 [24, 35] | 24 [21, 28] | 22 [20, 24] | < .001 |
| Systolic BP, median [interquartile range], mm Hg | 97 [84, 118] | 112 [96, 133] | 119 [104, 137] | < .001 |
| Diastolic BP, median [interquartile range], mm Hg | 48 [40, 58] | 56 [46, 67] | 59 [51, 69] | < .001 |
| Temperature, median [interquartile range], degrees Celsius | 37 [37, 38] | 37 [37, 38] | 37 [37, 38] | .703 |
| Laboratory & radiographic findings, median [interquartile range] | | | | |
| Hematocrit level, % | 35 [30, 40] | 34 [30, 39] | 36 [32, 40] | < .001 |
| Serum bicarbonate, mEq/L | 25 [21, 29] | 26 [22, 29] | 26 [24, 29] | .186 |
| BUN, mg/dL | 26 [16, 41] | 24 [15, 36] | 18 [12, 26] | < .001 |
| Serum glucose, mg/dL | 166 [131, 228] | 150 [118, 204] | 137 [111, 185] | < .001 |
| Serum sodium, mEq/L | 137 [133, 140] | 137 [133, 140] | 137 [134, 140] | .466 |
| Pleural effusion, frequency (%) | 480 (38) | 189 (44) | 1,738 (30) | < .001 |
| Ventilatory support and vasopressors, No. (%) | | | | |
| Invasive mechanical ventilatory support | 394 (31) | 20 (5) | 15 (0) | < .001 |
| Noninvasive mechanical ventilatory support | 305 (24) | 41 (9) | 209 (4) | < .001 |
| Vasopressors | 186 (15) | 6 (1) | 21 (0) | < .001 |

study. Important distinctions of their study to ours are that they relied on administrative data for the diagnosis of pneumonia and the underlying population consisted of enrollees into an insurance plan.

Our study showed a clustering of cases of CAP in the ICU in an area of Louisville that was affected by a higher proportion of poverty. In children, there is a large body of literature that shows an association between poverty

TABLE 2] Severity of Pneumonia on Day of Hospitalization

| Severity | ICU Admission, No. (%) | | | P Value |
|--|------------------------|----------|------------|---------|
| | Early | Late | None | |
| Total study population, No. | 1,275 | 432 | 5,742 | |
| Pneumonia Severity Index risk class | | | | |
| I | 9 (1) | 13 (3) | 423 (7) | < .001 |
| II | 37 (3) | 31 (7) | 1,097 (19) | < .001 |
| III | 93 (7) | 67 (16) | 1,163 (20) | < .001 |
| IV | 395 (31) | 174 (40) | 2,090 (36) | < .001 |
| V | 741 (58) | 147 (34) | 969 (17) | < .001 |
| CURB-65 score | | | | |
| 0 | 28 (2) | 40 (9) | 837 (15) | < .001 |
| 1 | 136 (11) | 79 (18) | 1,529 (27) | < .001 |
| 2 | 283 (22) | 130 (30) | 1,691 (29) | .040 |
| 3 | 409 (32) | 119 (28) | 1,254 (22) | < .001 |
| 4 | 325 (25) | 55 (13) | 390 (7) | < .001 |
| 5 | 94 (7) | 9 (2) | 41 (1) | < .001 |
| qSOFA score | | | | |
| 0 | 7 (1) | 7 (2) | 245 (4) | < .001 |
| 1 | 388 (30) | 249 (58) | 3,818 (66) | < .001 |
| 2 | 542 (43) | 145 (34) | 1,475 (26) | < .001 |
| 3 | 338 (27) | 31 (7) | 204 (4) | < .001 |
| American Thoracic Society major and minor criteria | | | | |
| Multilobar infiltrates | 540 (42) | 199 (46) | 2,374 (41) | .230 |
| PaO ₂ /Fio ₂ ratio ≤250 | 800 (63) | 157 (36) | 891 (16) | < .001 |
| Respiratory rate ≥30 breaths/min | 583 (46) | 101 (23) | 572 (10) | < .001 |
| Confusion/disorientation | 541 (42) | 80 (19) | 786 (14) | < .001 |
| Uremia | 836 (66) | 259 (60) | 2,537 (44) | < .001 |
| Leukopenia | 69 (5) | 21 (5) | 253 (4) | .230 |
| Thrombocytopenia | 124 (10) | 30 (7) | 265 (5) | < .001 |
| Hypothermia | 65 (5) | 3 (1) | 61 (1) | < .001 |
| Hypotension | 840 (66) | 258 (60) | 3,046 (53) | < .001 |
| Invasive mechanical ventilation | 394 (31) | 20 (5) | 15 (0) | < .001 |
| Vasopressors | 186 (15) | 6 (1) | 21 (0) | < .001 |

CURB = confusion, urea, respiratory rate, and BP; qSOFA = sepsis-related organ failure assessment.

and pneumonia.¹⁶⁻²⁰ The number of articles on the topic in adults is lower, but the available literature points in the same direction.^{21,22} The association between poverty and incidence of CAP in the ICU, or any disease for that matter, is complex. A number of factors may play a role and may include lack of access to basic preventative health care such as vaccination, higher exposure to pollution,²³ lack of home utilities such as air conditioning,²⁴ and illiteracy.¹⁹ The role of race on the incidence of pneumonia is not as straightforward and could be confounded by other factors. Our ecologic

analysis did not show a relation between race and incidence of pneumonia. Conversely, Burton et al²¹ have found that black individuals are at a higher risk of pneumonia after data are adjusted for poverty. We also failed to demonstrate an increased risk for CAP in the ICU in census tracts with a high percentage of elderly individuals.

At one year, the mortality rate in our cohort was approximately 50%. The reason that patients with CAP in the ICU who were discharged from the hospital had

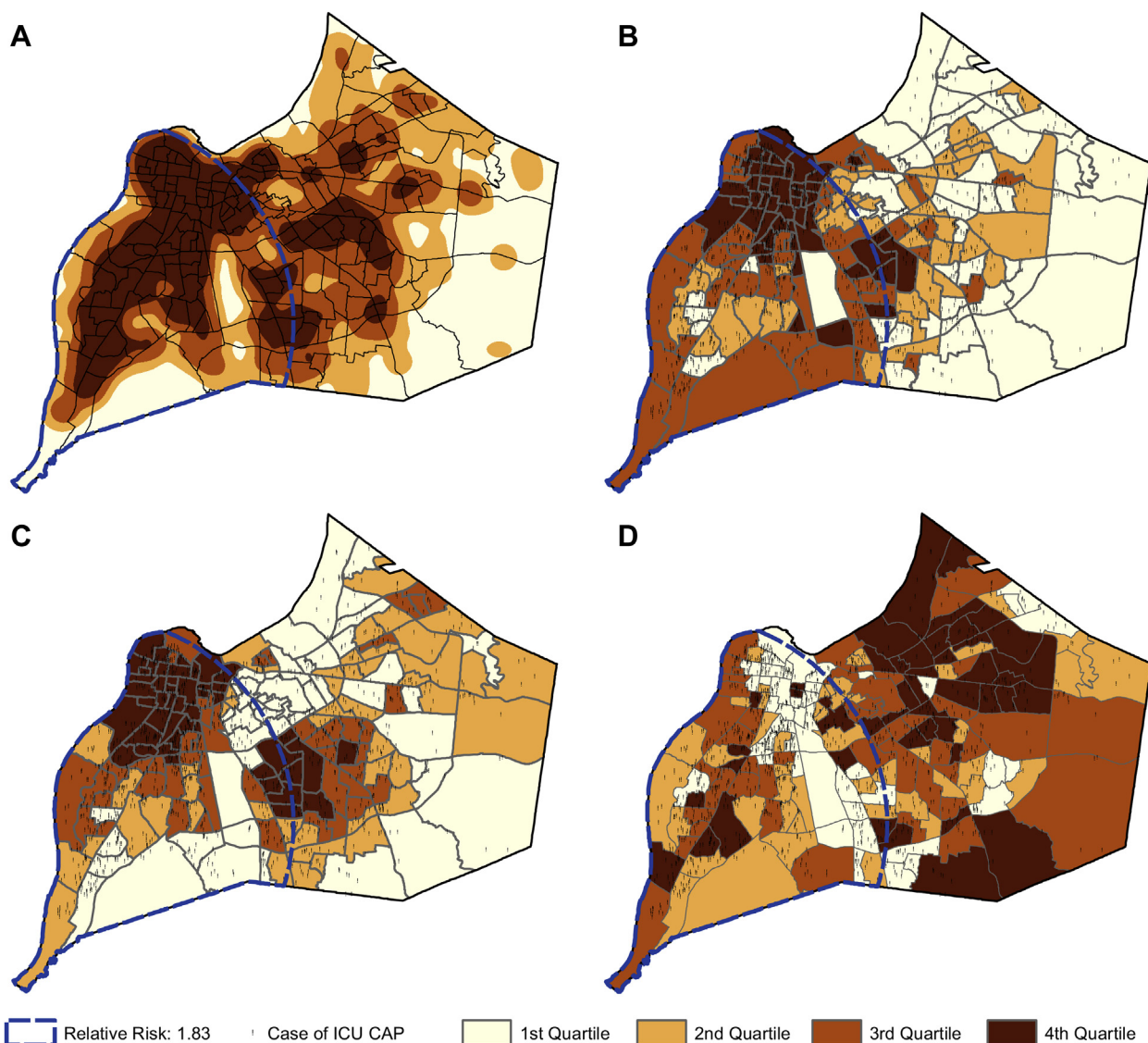


Figure 2 – A-D, Heatmap shows unique hospitalized patients with severe community-acquired pneumonia (A) and their ecologic association with poverty (B), black race (C), and age (D).

such a high mortality rate after their pneumonia was long cured is unclear. The answer may be that these patients have a number of comorbidities that place them both at risk for the development of pneumonia and unfavorable long-term outcomes. But the presence of comorbidities does not seem to fully explain this finding. In a retrospective cohort study that included 6971 patients who were admitted to a tertiary Veterans Affairs Hospital, those who had CAP on admission had a 40% increase in death on long-term follow up as compared with those who were admitted for other reasons. This increased risk of death was independent of comorbidities.⁸ In a prospective cohort study that enrolled 1895 patients who were hospitalized for CAP,

higher levels of inflammatory markers close to or on discharge were associated with higher risk of death over one year after there was adjustment for comorbidities.²⁵ This study highlights the important role that inflammation plays in determining long-term prognosis in patients with CAP.

A substantial proportion of patients with CAP in the ICU were treated with noninvasive ventilation. The value of noninvasive ventilation for CAP is debatable. Observational cohort studies have reported a high rate of failure of noninvasive ventilation in patients with CAP.^{26,27} The failure of noninvasive ventilation in patients with CAP may represent a marker of the severity

TABLE 3] Number of Deaths in Patients With Community-Acquired Pneumonia Admitted to the ICU in Louisville and the United States

| ICU Admissions and Mortality | Louisville, Kentucky ^a | | | United States of America ^b |
|--|-----------------------------------|----------|----------|---------------------------------------|
| | ICU Admission | | | |
| | Early | Late | Total | |
| Adult patients in the ICU with community-acquired pneumonia, No. (%) | 1,275 | 432 | 1,707 | 356,326 ^c |
| In-hospital deaths ^d | 200 (16) | 87 (20) | 287 (17) | 60,576 ^c |
| 15-Day deaths | 233 (18) | 84 (19) | 317 (19) | 66,172 ^c |
| 30-Day deaths ^d | 319 (25) | 140 (33) | 459 (27) | 96,209 ^c |
| 6-Month deaths ^d | 471 (38) | 189 (44) | 660 (39) | 138,968 ^c |
| 1-Year deaths | 563 (45) | 216 (51) | 779 (47) | 167,474 ^c |

^aEstimated adult population, 587,499.

^bEstimated adult population, 245,273,438.

^cYearly estimates from percentage totals from Louisville, Kentucky.

^dIndicates a significant difference in deaths between Early and Late ICU admission ($P < .05$).

of their illness. Here, we see an opportunity for research addressing the proper implementation of noninvasive ventilation in these patients.

Patients with late ICU admission had higher 6-month mortality rate as compared with those with early ICU admission. Yet, patients with late ICU admission had lower severity of illness scores on admission to the hospital. A few potential explanations for these findings can be pondered. First, severity of illness scores may not have captured fully the gravity of pneumonia in patients with late ICU admission. Second, treatments or interventions may not have been implemented as early in patients with late admission, who seemed less ill on admission to the hospital. Third, factors other than severity of illness, such as frailty, may have played a greater role in patients with late admission.

A number of patients who were admitted to the ICU did not have severe CAP as determined by the Pneumonia Severity Index or CURB-65. It is known that clinicians overestimate the risk of death in patients with pneumonia, which conceivably could explain this finding.²⁸ Conversely, factors not contemplated by clinical prediction rules can play a role in the decision-making by the clinician. A previous study showed that 19% of patients with CAP and a Pneumonia Severity Index risk score I or II who were seen in the ED required hospitalization. These patients experienced complications such as a need for mechanical ventilation (2.4%), the development of empyema (1.4%), and death

(0.9%).²⁹ Patients in risk class I and II in our study had a mean age of 44 years, which indicates that the Pneumonia Severity Index may not predict ICU admission well in patients who are not elderly.

The estimated number of CAP in the ICU and associated mortality rates for the United States is based on the assumption that Louisville has social and demographic features that are representative of the United States. Although no major city in the United States perfectly represents the US population, Louisville has more similarities than differences. Similarities include median household income of \$55,775 for the United States vs \$51,259 for Louisville; poverty rate of 14.7% for the United States vs 15.1% for Louisville; median age of 37.8 years for the United States vs 38.1 years for Louisville; and proportion of white residents of 61.5% for the United States vs 68.8% for Louisville. But a few differences are worthy of note: Hispanic individuals represent 17.6% of US population but only 4.9% of the Louisville population. Black individuals represent 12.3% of the US population but 20.7% in Louisville.³⁰

In conclusion, our study sheds light on the epidemiology of CAP in the ICU in the United States. We demonstrated that CAP in the ICU is common and that patients have an extremely high mortality rate at one year, which highlights the importance of future research in long-term outcomes. We also demonstrated that CAP in ICU cases cluster in areas with higher poverty. This is

actionable information that provides the opportunity to tackle factors related to health disparity in these areas, such as better access to health care and vaccination

programs. This analysis may have important implications for health-care resources allocation and policy.

Acknowledgments

Author contributions: R. C. takes responsibility for the content of the manuscript, including the data and analysis. R. C. and J. A. R. contributed to study concept, data analysis and interpretation, writing, and editing of the manuscript. S. F. contributed to data analysis and interpretation, writing and editing of the manuscript. F. W. A., L. A. B., R. G. W., and M. S. N. contributed to data interpretation, writing, and editing of the manuscript.

Financial/nonfinancial disclosures: None declared.

Role of sponsors: The sponsor had no role in the design of the study, the collection and analysis of the data, or the preparation of the manuscript.

Other contributions: We thank the staff and research associates at the Division of Infectious Diseases, University of Louisville.

Additional information: The e-Figures and e-Tables can be found in the Supplemental Materials section of the online article.

References

1. Fine MJ, Auble TE, Yealy DM, et al. A prediction rule to identify low-risk patients with community-acquired pneumonia. *N Engl J Med*. 1997;336(4):243-250.
2. Dremsizov T, Clermont G, Kellum JA, Kalassian KG, Fine MJ, Angus DC. Severe sepsis in community-acquired pneumonia: when does it happen, and do systemic inflammatory response syndrome criteria help predict course? *Chest*. 2006;129(4):968-978.
3. Liapikou A, Ferrer M, Polverino E, et al. Severe community-acquired pneumonia: validation of the Infectious Diseases Society of America/American Thoracic Society guidelines to predict an intensive care unit admission. *Clin Infect Dis*. 2009;48(4):377-385.
4. Almirall J, Bolibar I, Vidal J, et al. Epidemiology of community-acquired pneumonia in adults: a population-based study. *Eur Respir J*. 2000;15(4):757-763.
5. Neill AM, Martin IR, Weir R, et al. Community acquired pneumonia: aetiology and usefulness of severity criteria on admission. *Thorax*. 1996;51(10):1010-1016.
6. Luna CM, Palma I, Niederman MS, et al. The impact of age and comorbidities on the mortality of patients of different age groups admitted with community-acquired pneumonia. *Ann Am Thorac Soc*. 2016;13(9):1519-1526.
7. Cavallazzi R, Wiemken T, Arnold FW, et al. Outcomes in patients with community-acquired pneumonia admitted to the intensive care unit. *Respir Med*. 2015;109(6):743-750.
8. Bordon J, Wiemken T, Peyrani P, et al. Decrease in long-term survival for hospitalized patients with community-acquired pneumonia. *Chest*. 2010;138(2):279-283.
9. Ramirez JA, Wiemken TL, Peyrani P, et al. Adults hospitalized with pneumonia in the United States: incidence, epidemiology, and mortality. *Clin Infect Dis*. 2017;65(11):1806-1812.
10. Gearhart AM, Furmanek S, English C, Ramirez J, Cavallazzi R. Predicting the need for ICU admission in community-acquired pneumonia. *Respir Med*. 2019;155:61-65.
11. Bordon J, Slomka M, Gupta R, et al. Hospitalization due to community-acquired pneumonia in patients with chronic obstructive pulmonary disease: incidence, epidemiology & outcomes. *Clin Microbiol Infect*. 2020;26(2):220-226.
12. United States Census Bureau. <https://geocoding.geo.census.gov/geocoder>. Accessed May 20, 2020.
13. Kulldorff M. A spatial scan statistic. *Communications in Statistics - Theory and Methods*. 1997;26(6):1481-1496.
14. Anonymous United States Census Bureau. (2019) How the Census Bureau measures poverty. <https://www.census.gov/topics/income-poverty/poverty/guidance/poverty-measures.html>. Accessed November 1, 2019.
15. Storms AD, Chen J, Jackson LA, et al. Rates and risk factors associated with hospitalization for pneumonia with ICU admission among adults. *BMC Pulm Med*. 2017;17(1). 208-017-0552-x.
16. Beck AF, Florin TA, Campanella S, Shah SS. geographic variation in hospitalization for lower respiratory tract infections across one county. *JAMA Pediatr*. 2015;169(9):846-854.
17. Sonogo M, Pellegrin MC, Becker G, Lazzarini M. Risk factors for mortality from acute lower respiratory infections (ALRI) in children under five years of age in low and middle-income countries: a systematic review and meta-analysis of observational studies. *PLoS One*. 2015;10(1):e0116380.
18. Azab SF, Sherief LM, Saleh SH, Elsaed WF, Elshafie MA, Abdelsalam SM. Impact of the socioeconomic status on the severity and outcome of community-acquired pneumonia among Egyptian children: a cohort study. *Infect Dis Poverty*. 2014;3:14.
19. Thorn LK, Minamisava R, Nouer SS, Ribeiro LH, Andrade AL. Pneumonia and poverty: a prospective population-based study among children in Brazil. *BMC Infect Dis*. 2011;11:180.
20. Blain AP, Thomas MF, Shirley MD, et al. Spatial variation in the risk of hospitalization with childhood pneumonia and empyema in the North of England. *Epidemiol Infect*. 2014;142(2):388-398.
21. Burton DC, Flannery B, Bennett NM, et al. Socioeconomic and racial/ethnic disparities in the incidence of bacteremic pneumonia among US adults. *Am J Public Health*. 2010;100(10):1904-1911.
22. Lindenauer PK, Lagu T, Rothberg MB, et al. Income inequality and 30 day outcomes after acute myocardial infarction, heart failure, and pneumonia: retrospective cohort study. *BMJ*. 2013;346:f521.
23. Kurmi OP, Lam KB, Ayres JG. Indoor air pollution and the lung in low- and medium-income countries. *Eur Respir J*. 2012;40(1):239-254.
24. Ostro B, Rauch S, Green R, Malig B, Basu R. The effects of temperature and use of air conditioning on hospitalizations. *Am J Epidemiol*. 2010;172(9):1053-1061.
25. Yende S, D'Angelo G, Kellum JA, et al. Inflammatory markers at hospital discharge predict subsequent mortality after pneumonia and sepsis. *Am J Respir Crit Care Med*. 2008;177(11):1242-1247.
26. Correa TD, Sanches PR, de Moraes LC, Scarin FC, Silva E, Barbas CS. Performance of noninvasive ventilation in acute respiratory failure in critically ill patients: a prospective, observational, cohort study. *BMC Pulm Med*. 2015;15:144-015-0139-3.
27. Murad A, Li PZ, Dial S, Shahin J. The role of noninvasive positive pressure ventilation in community-acquired pneumonia. *J Crit Care*. 2015;30(1):49-54.
28. Fine MJ, Hough LJ, Medsger AR, et al. The hospital admission decision for patients with community-acquired pneumonia: results from the pneumonia Patient Outcomes Research Team cohort study. *Arch Intern Med*. 1997;157(1):36-44.
29. Marrie TJ, Huang JQ. Low-risk patients admitted with community-acquired pneumonia. *Am J Med*. 2005;118(12):1357-1363.
30. Anonymous. https://datausa.io/profile/geo/jefferson-county-ky/#category_heritage. Accessed November 20, 2017.