













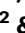


A high-performance genetically encoded fluorescent indicator for in vivo cAMP imaging

Received: 11 July 2022

Accepted: 24 August 2022

Published online: 12 September 2022


 Check for updates

Liang Wang ^{1,16}, Chunling Wu^{2,3,16}, Wanling Peng⁴, Ziliang Zhou ^{5,6}, Jianzhi Zeng ², Xuelin Li², Yini Yang², Shuguang Yu⁷, Ye Zou ⁸, Mian Huang⁸, Chang Liu⁹, Yefei Chen¹⁰, Yi Li¹¹, Panpan Ti¹¹, Wenfeng Liu ¹, Yufeng Gao¹, Wei Zheng ¹, Haining Zhong ¹², Shangbang Gao ¹¹, Zhonghua Lu¹⁰, Pei-Gen Ren⁹, Ho Leung Ng ⁸, Jie He ⁷, Shoudeng Chen ^{5,13}, Min Xu ⁴, Yulong Li ² & Jun Chu ^{1,14,15} 

cAMP is a key second messenger that regulates diverse cellular functions including neural plasticity. However, the spatiotemporal dynamics of intracellular cAMP in intact organisms are largely unknown due to low sensitivity and/or brightness of current genetically encoded fluorescent cAMP indicators. Here, we report the development of the new circularly permuted GFP (cpGFP)-based cAMP indicator G-Flamp1, which exhibits a large fluorescence increase (a maximum $\Delta F/F_0$ of 1100% in HEK293T cells), decent brightness, appropriate affinity (a K_d of 2.17 μM) and fast response kinetics (an association and dissociation half-time of 0.20 and 0.087 s, respectively). Furthermore, the crystal structure of the cAMP-bound G-Flamp1 reveals one linker connecting the cAMP-binding domain to cpGFP adopts a distorted β -strand conformation that may serve as a fluorescence modulation switch. We demonstrate that G-Flamp1 enables sensitive monitoring of endogenous cAMP signals in brain regions that are implicated in learning and motor control in living organisms such as fruit flies and mice.

Cyclic adenosine 3',5'-monophosphate (cAMP), which is produced from adenosine triphosphate (ATP) by adenylyl cyclase (AC), acts as a key second messenger downstream of many cell surface receptors, especially G-protein-coupled receptors (GPCRs)¹. cAMP plays critical roles in regulating numerous cellular physiological processes, including neuronal plasticity and innate and adaptive immune cell activities, through its effector proteins such as protein kinase A (PKA), exchange protein directly activated by cAMP (EPAC), and cyclic nucleotide-activated ion channels (CNG and HCN channels)². A growing body of evidence has shown that cAMP is precisely controlled in space and time in living cells and its abnormal dynamics are associated with many diseases³. However, it is largely unclear how cAMP signaling is regulated under physiological and pathological conditions in vivo³⁻⁵.

Genetically encoded fluorescent indicators (GEFIs) with advanced optical imaging have emerged as a powerful tool for real-time monitoring the spatiotemporal dynamics of signaling molecules including calcium in intact model organisms⁶. Current GEFIs for cAMP were developed based on two strategies: fluorescence resonance energy transfer (FRET) between two fluorescent proteins (FPs) or circular permutation/splitting of a single FP⁷⁻⁹. The latter is much more sensitive and, because they only require a single-color channel, can be more easily used together with other spectrally compatible sensors and actuators¹⁰. So far, a few single-FP cAMP sensors (Flamindo2, cAMPr, Pink Flamindo and R-FlinCA) based on different mammalian cyclic nucleotide-binding domains (CNBDs) and green/red FPs have been created¹¹⁻¹⁴. However, they exhibit small fluorescence changes ($\Delta F/F_0 < 150\%$) and most are dim in mammalian cells at 37 °C

A full list of affiliations appears at the end of the paper.  e-mail: jun.chu@siat.ac.cn

(Supplementary Fig. 1a–c). Thus, it is highly desirable to develop new high-performance (high brightness, high sensitivity and fast response kinetics) single-FP cAMP sensors that can decipher complex cAMP signals *in vivo*.

To address these problems, we engineered a highly responsive circularly permuted GFP (cpGFP)-based cAMP sensor named G-Flamp1 (green fluorescent cAMP indicator 1) by inserting cpGFP into the CNBD of the bacterial *MlotiK1* channel (mICNBD), followed by extensive screening. G-Flamp1 exhibits a maximum $\Delta F/F_0$ of 1100% in HEK293T cells at 37 °C, which is 9–47 times greater than existing single-FP cAMP sensors. Furthermore, we resolved the crystal structure of cAMP-bound G-Flamp1 and found a long distorted β -strand connecting mICNBD and cpGFP, which is unseen in other single-FP sensors and could critically modulate sensor fluorescence. Finally, we successfully monitored cAMP signals with G-Flamp1 during learning and motor control in fruit flies and mice.

Results

Development of G-Flamp1

To develop a high-performance genetically encoded cAMP indicator (GEAI), we chose mICNBD as a starting point (Fig. 1a), which was previously used to create the mICNBD-based FRET indicator^{15,16}. Unlike mammalian CNBDs, the bacterial mICNBD likely does not interact with endogenous eukaryotic proteins and thus would not interfere with signaling pathways in mammalian cells⁸. Furthermore, mICNBD exhibits high binding affinity and specificity for cAMP because the dissociation constants (K_d) for mICNBD-cAMP and mICNBD-cGMP complexes are 68 and 499 nM, respectively. In addition, it has fast response kinetics with an association half-time (t_{on}) of 27 ms under 1 μ M cAMP and dissociation half-time (t_{off}) of 74 ms¹⁶. Lastly, although mICNBD is a homolog of mammalian CNBDs with a similar fold, its amino acid sequence and cAMP-binding pocket is significantly different from those of mammalian CNBDs (Supplementary Fig. 2), raising the possibility that cAMP sensors with a different response profile (brightness, fluorescence change, affinity, and kinetics) can be engineered.

To determine the optimal insertion site, we varied the position of cpGFP with original linkers from the calcium sensor GCaMP6f (LE-cpGFP-LP)¹⁷ in three loop regions of mICNBD: the region 'Gln237-Leu239' undergoes a large conformation change from random coil to α -helix upon cAMP binding while the regions 'Ala283-Val288' and 'Ala313-Val317' remain random coils with small conformation change (numbering according to PDB 1VP6 of mICNBD). A total of 11 sensors were tested using a bacterial lysate screening assay. One dim variant named G-Flamp0.1, in which cpGFP was inserted between Pro285 and Asn286 of mICNBD, gave the largest signal change with a $\Delta F/F_0$ of -25.8% (Fig. 1a and Supplementary Fig. 3a–c). To improve the brightness of G-Flamp0.1, we examined several beneficial mutations from the well-folded GFP variants (Citrine and superfolder GFP)^{18,19} and generated G-Flamp0.2 with brightness increased by 330% (Supplementary Fig. 3d). To obtain a large $\Delta F/F_0$ sensor, both linkers connecting cpGFP and mICNBD were randomized together. Of the 427 variants tested, one variant (G-Flamp0.5) with linkers 'WG' and 'RV' showed the largest fluorescence change with a $\Delta F/F_0$ of 230% when excited at 488 nm (Supplementary Fig. 3e). Next, we performed random mutagenesis on G-Flamp0.5 using error-prone PCR and were able to identify a bright and highly responsive variant G-Flamp0.7 with a $\Delta F/F_0$ of 560%, which harbors P285N mutation in mICNBD and D173G mutation in GFP (Supplementary Fig. 3f, g). Finally, to increase the selectivity for cAMP over cGMP (defined as the K_d ratio of cGMP/cAMP), the mutation S308V, which is in the cAMP-binding pocket, was introduced to weaken the binding between mICNBD and cGMP²⁰. The resultant sensor G-Flamp1 had a higher selectivity with a $\Delta F/F_0$ of 820% under excitation at 488 nm (Supplementary Fig. 3g and Supplementary Fig. 4).

In vitro characterization of G-Flamp1 sensor

We first investigated the fluorescence and absorption properties of purified G-Flamp1. The cAMP-bound G-Flamp1 had excitation and emission peaks at 490 and 510 nm, respectively, which were similar to those of mEGFP. The excitation and emission peaks of cAMP-free G-Flamp1 were redder than those of cAMP-bound G-Flamp1 by 10 nm and 3 nm, respectively (Fig. 1b and Supplementary Fig. 5a, b), suggesting different chromophore environments in cAMP-bound and cAMP-free G-Flamp1. According to these fluorescence spectra, the calculated fluorescence change peaked at 450 nm with a maximum $\Delta F/F_0$ of 1300% (Fig. 1c). Absorbance spectra revealed that both cAMP-bound and cAMP-free G-Flamp1 displayed two peaks with maxima at 400 and 490 nm (cAMP-bound G-Flamp1) or 500 nm (cAMP-free G-Flamp1) (Supplementary Fig. 5c), which correspond to protonated (dark state) and deprotonated (bright state) chromophores, respectively²¹. Moreover, the deprotonated form of cAMP-bound G-Flamp1 significantly increased, making it much brighter than deprotonated cAMP-free G-Flamp1. Under two-photon illumination, cAMP-bound G-Flamp1 had a similar excitation spectrum to mEGFP with a peak at around 920 nm (Supplementary Fig. 5d) and a maximum $\Delta F/F_0$ of 1300% at around 900 nm (Fig. 1d).

Compared to cAMP-free G-Flamp1, cAMP-bound G-Flamp1 exhibited a six-fold greater extinction coefficient (EC) (25280 $\text{mM}^{-1}\text{cm}^{-1}$ versus 4374 $\text{mM}^{-1}\text{cm}^{-1}$ at 488 nm) and similar quantum yield (QY) (0.322 versus 0.323) (Supplementary Table 1). The fluorescence change (6-fold) based on the measured EC and QY values is smaller than the $\Delta F/F_0$ of ~8.5 under 488 nm excitation (Fig. 1c), which is also observed in recent GCaMP sensors (Supplementary Table 2)²². Like other single-FP probes, the fluorescence intensity of G-Flamp1 was sensitive to pH, with pKa values of 8.27 and 6.95 for cAMP-free and cAMP-bound G-Flamp1, respectively (Supplementary Fig. 6a). Moreover, the calculated $\Delta F/F_0$ peaked at pH 6.5 with a value of 1640% and remained high at pH 7.0 with a value of 1440% excited at 450 nm (Supplementary Fig. 6b), indicating that G-Flamp1 would be highly responsive in mammalian cells where the physiological pH is maintained between 6.8 and 7.3²³.

The concentration-response curves showed that K_d values of G-Flamp1 for cAMP and cGMP were 2.17 and 30.09 μ M, respectively (Fig. 1e), leading to a 13-fold higher selectivity for cAMP over cGMP, which is similar to other widely used cAMP probes (Supplementary Table 3)¹⁴. In addition, the maximum $\Delta F/F_0$ of G-Flamp1 induced by cGMP was only 30% of that induced by cAMP. Since the K_d value for G-Flamp1-cAMP complex is close to the resting cAMP concentration of 0.1–1 μ M^{24,25}, G-Flamp1 should detect cAMP changes under physiological stimulation conditions. To measure response kinetics, we applied the stopped-flow technique on purified G-Flamp1 and fitted data with a mono-exponential function. The apparent association (k_{on}) and dissociation (k_{off}) rate constants were 3.48 $\mu\text{M}^{-1}\text{s}^{-1}$ and 7.9 s^{-1} , resulting in a t_{on} of 0.20 s under 1 μ M cAMP and t_{off} of 0.087 s, respectively (Fig. 1f). Compared to the previously reported mICNBD-based FRET indicator, G-Flamp1 has a lower affinity (K_d of 2.17 μ M versus 0.066 μ M) and a slower response speed (k_{on} of 3.48 $\mu\text{M}^{-1}\text{s}^{-1}$ versus 25 $\mu\text{M}^{-1}\text{s}^{-1}$). Regardless, our results indicate that G-Flamp1 can faithfully report cAMP dynamics with sub-second temporal resolution.

Crystal structure of cAMP-bound G-Flamp1

To understand the molecular mechanism of large fluorescence change in the G-Flamp1 indicator, we determined the X-ray crystal structure of cAMP-bound G-Flamp1 without RSET tag at pH 8.0 to a 2.2 Å resolution (Fig. 1g). The statistics of data collection and structure refinement were summarized in Supplementary Table 4. Overall, all residues in G-Flamp1 showed good electron density except for N-terminal nine residues (MGFYQEVRR), C-terminal six residues (GAAASA) and a flexible linker (GGTGGG) within cpGFP. Two G-Flamp1 molecules were arranged as a dimer in one asymmetric unit of G-Flamp1 crystal and were structurally similar with an

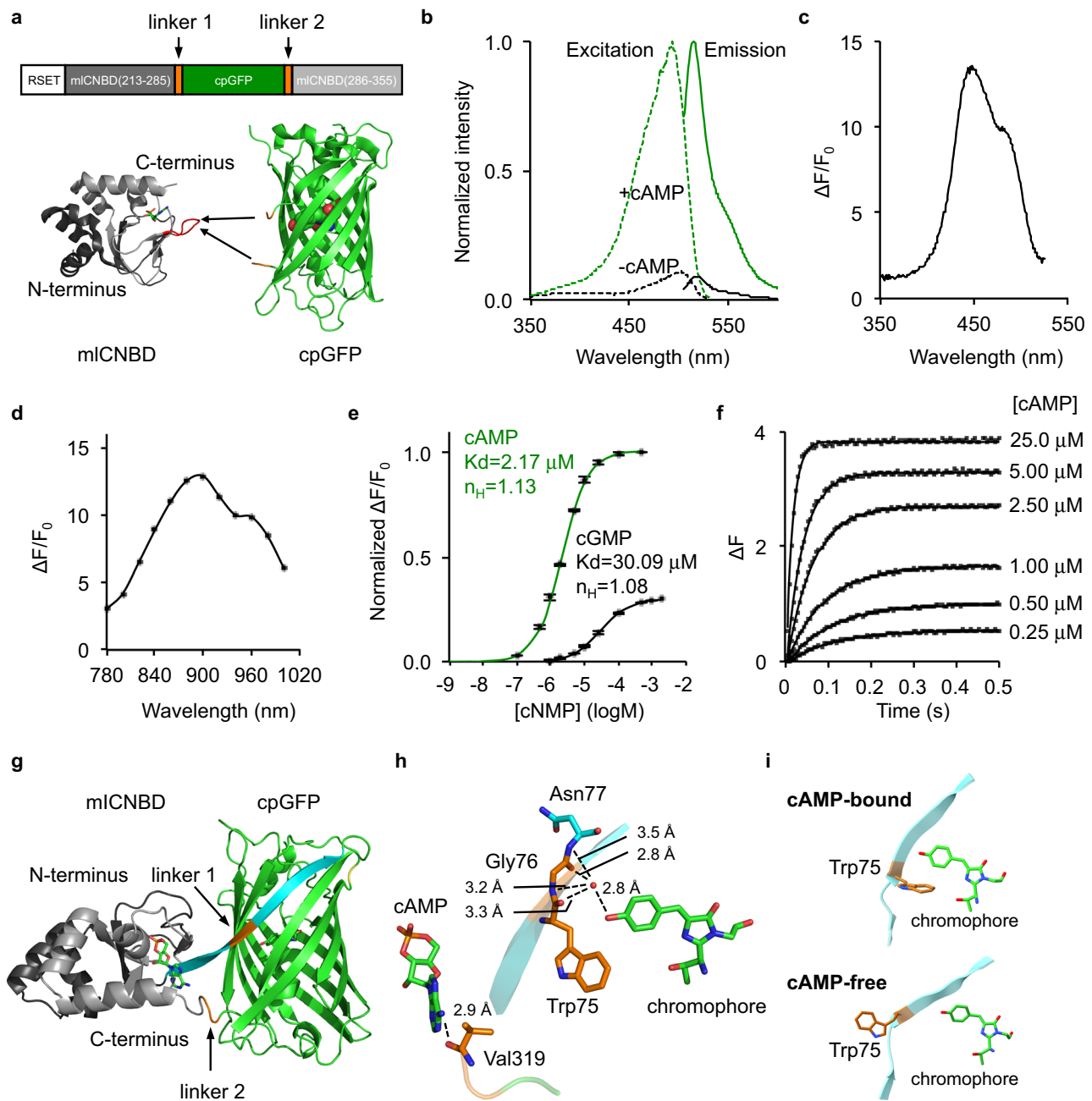


Fig. 1 | Development and in vitro characterization of G-Flamp1 indicator.

a Schematic of G-Flamp sensors. cpGFP with two flanking linkers (two amino acids per linker) is inserted into mICNBD (Gly213-Ala355, Genbank accession number: BA000012.4). The N-terminal peptide (RSET) including a 6× His tag is from the bacterial expression vector pNCS. The X-ray crystal structures of cAMP-bound mICNBD (PDB: 1VP6) and cpGFP (PDB: 3WLD) are shown as cartoon with cAMP and chromophore of cpGFP shown as stick and sphere, respectively. The loop bearing the insertion site in G-Flamp1 is marked in red. **b** Excitation and emission spectra of cAMP-free and cAMP-bound G-Flamp1 sensors in HEPES buffer (pH 7.15). **c** Excitation wavelength-dependent $\Delta F/F_0$ of G-Flamp1 under one-photon excitation. **d** Excitation wavelength-dependent $\Delta F/F_0$ of G-Flamp1 under two-photon excitation. **e** Binding titration curves of G-Flamp1 to cAMP or cGMP in HEPES buffer (pH 7.15). The data were fitted by a sigmoidal binding function to extract the

dissociation constant K_d and Hill coefficient n_H . Data are presented as mean \pm standard error of mean (SEM) from three independent experiments. **f** Binding kinetics of G-Flamp1 to cAMP measured using the stopped-flow technique in HEPES buffer (pH 7.15). Each curve corresponds to a different concentration of cAMP, i.e., from bottom to top: 0.25, 0.5, 1, 2.5, 5, and 25 μM . The data were fitted by a single-exponential function. **g** Cartoon representation of crystal structure of cAMP-bound G-Flamp1 (PDB: 6M63). The N- and C-terminal fragments of mICNBD are shown in dark and light gray, respectively. cpGFP is in green and both linkers are in orange. The long β -strand possessing linker 1 is in cyan. **h** Chromophore and cAMP are in close proximity with linker 1 and linker 2, respectively. **i** Zoom-in view of Trp75 and the chromophore of simulated cAMP-bound and cAMP-free structures at conformations associated with the global minimum energy. Source data are provided as a Source Data file.

r.m.s.d. of C α atoms of 0.149 Å. However, this homodimer was not biologically relevant and is likely caused by crystallographic packing because its dimerization interface is mediated by β -barrel ends of cpGFP rather than the previously described β -barrel wall²⁶. Consistent with this, gel filtration analysis showed that G-Flamp1 at a

high concentration of 0.7 mM was a monomer (Supplementary Fig. 7).

The linkers connecting sensing domain and circularly permuted FP (cpFP) are the main determinant of the dynamic range of single-FP sensors⁹. The crystal structure of cAMP-bound G-Flamp1 reveals that

the first linker Trp75/Gly76 and the second linker Arg318/Val319 (numbering according to PDB 6M63 of G-Flamp1, Supplementary Fig. 4c), along with their flanking amino acids from mICNBD and cpGFP, adopt a highly twisted β -strand and random coil conformation, respectively (Fig. 1g and Supplementary Fig. 8), which is unique because both linkers in other single-FP sensors with crystal structures available fold as random coil or α -helix segments (Supplementary Fig. 8)^{27–29}. In G-Flamp1, linker 1 and linker 2 are in close proximity with chromophore and cAMP, respectively (Fig. 1h), suggesting the former primarily contributes to fluorescence change. Moreover, since the mICNBD domain is far away from the chromophore, we reasoned that a self-contained fluorescence modulation mechanism, in which residues from linkers and/or FP (e.g., the red calcium sensor K-GECO1) rather than sensing domain (e.g., the green calcium sensor GCaMP3) interact with the deprotonated chromophore (Supplementary Fig. 9)²⁷, may exist in G-Flamp1.

A close examination of linker 1 revealed that the Trp75 stabilizes the phenolic group of the chromophore in two ways. First, the backbone CO or NH groups of the tripeptide Trp75-Gly76-Asn77 indirectly interact with the phenolic oxygen of the chromophore, via a water molecule, to form a hydrogen-bonding network. This is expected to stabilize the anionic state of the chromophore in the cAMP-bound state. Moreover, such a hydrogen-bonding network reduces chromophore motions, which is expected to improve the quantum yield. Second, the bulky side chain of Trp75 protects the chromophore from solvent quenching³⁰. Thus, we reasoned that a movement of Trp75 would make the chromophore unstable and dim. Consistent with this, metadynamics molecular dynamics simulations of cAMP-free and cAMP-bound G-Flamp1 showed that the side chain of Trp75 rotates away from the chromophore at conformation associated with the global minimum energy in the cAMP-free form (Fig. 1i and Supplementary Fig. 10). Subsequent saturation mutagenesis on position 75 demonstrated that all G-Flamp1 variants had reduced fluorescence changes with a $\Delta F/F_0$ of 0–232% (Supplementary Fig. 11), further confirming the critical role of Trp75 in tuning fluorescence change of G-Flamp1 in a self-contained manner. This makes the cpGFP as well as linkers in G-Flamp1 a useful scaffold to be combined with other sensing domains for engineering of new single-FP sensors. However, to verify these assumptions, a crystal structure of cAMP-free G-Flamp1 needs to be resolved and compared to that of cAMP-bound G-Flamp1.

Performance of G-Flamp1 in mammalian cells

We first examined the cellular localization and brightness of G-Flamp1 in HEK293T cells. G-Flamp1, like Flamingo2 and Pink Flamingo, was evenly distributed in cytoplasm and nucleus (Fig. 2a and Supplementary Fig. 1b). The detailed imaging conditions throughout the paper are summarized in Supplementary Table 5). In contrast, cAMP_r and R-Flnca were found to localize mainly in the cytosol (Fig. 2a and Supplementary Fig. 1b), with the latter forming puncta 48 h post transfection (Supplementary Fig. 1d) and thus likely being toxic to mammalian cells²⁷. Under one-photon (488 nm) illumination, the basal fluorescence intensities of G-Flamp1, cAMP_r and Flamingo2 were 57, 109, and 21% of that of GCaMP6s¹⁷, respectively (Fig. 2a, b). At 450 nm, which gives the largest $\Delta F/F_0$, the basal brightness is reduced by 66% and ~19% of that of GCaMP6s taking the excitation efficiencies at 450 and 488 nm into account (Fig. 1b). Again, under two-photon (920 nm) illumination, G-Flamp1 was brighter than Flamingo2 but dimmer than cAMP_r (74% versus 38% of Flamingo2 and 165% of cAMP_r) in the resting state (Supplementary Fig. 12a).

Next we evaluated the cytotoxicity and interference with cAMP signaling of G-Flamp1 at a medium expression level. HEK293T cells stably expressing G-Flamp1 proliferated similarly to untransfected cells (Supplementary Fig. 13a), suggesting low cytotoxicity of G-Flamp1. To assess G-Flamp1's buffering effect, we investigated the phosphorylation of cAMP response element binding protein (CREB) at

Ser133, a key molecular event downstream of cAMP-PKA³¹. Both G-Flamp1-expressing HEK293T and control cells showed similar basal levels and increases of phospho-S133 of CREB before and after β -adrenergic receptor (β -AR) agonist isoproterenol (Iso) stimulation with low concentrations (10 nM or 100 nM), respectively (Supplementary Fig. 13b). Taken together, these results indicate that G-Flamp1 expression had no obvious effects on endogenous signaling.

We further determined the fluorescence change and sensitivity of G-Flamp1. Forskolin (Fsk), a potent activator of transmembrane AC³², was used to induce a high level of cAMP to assess the maximum fluorescence change. Under 450 nm illumination, G-Flamp1 expressed in HEK293T cells exhibited a maximum $\Delta F/F_0$ of 1100% in response to 60 μ M Fsk, which was 9–47 times larger than those of other cAMP probes (Fig. 2c, d and Supplementary Fig. 1b). G-Flamp1 also showed large fluorescence increases with a maximum $\Delta F/F_0$ of 340 and 820% in HeLa and CHO cells, respectively (Supplementary Fig. 14). To rule out possible unspecific responses, we generated a cAMP-insensitive indicator G-Flamp1-mut by introducing the R307E mutation into mICNBD of G-Flamp1 (Supplementary Fig. 15)²⁰. As expected, G-Flamp1-mut showed no detectable signal change in living cells (Fig. 2c). Notably, the 480 nm excitation gave a much smaller $\Delta F/F_0$ than 450 nm excitation (250% versus 1100%), leading to a smaller signal-to-noise ratio (SNR) (200 versus 361) (Supplementary Fig. 16). Therefore, 450 nm excitation was used for subsequent one-photon imaging experiments. To demonstrate the sensitivity of G-Flamp1, 2.5 nM Iso was exploited to produce a small amount of cAMP in HEK293T cells. G-Flamp1 exhibited an obvious fluorescence increase with a $\Delta F/F_0 > 100%$ after 5 min stimulation while other sensors showed little signal changes ($\Delta F/F_0 < 10%$) in our setup (Fig. 2e). Under two-photon excitation (920 nm), G-Flamp1 exhibited a maximum $\Delta F/F_0$ of 1240%, which is much larger than those of Flamingo2 and cAMP_r (–79 and 72%, respectively) (Supplementary Fig. 12b, c). Meanwhile, G-Flamp1 had a 250-fold higher signal-to-noise ratio compared with Flamingo2 and cAMP_r (Supplementary Fig. 12d). In addition, G-Flamp1 exhibited a small fluorescence lifetime decrease from 2.169 to 2.069 ns upon 60 μ M Fsk treatment (Supplementary Fig. 17).

Then we explored the specificity and reversibility of G-Flamp1 in HEK293T cells. Cyclic guanosine monophosphate (cGMP), which is synthesized from guanosine triphosphate (GTP) by guanylyl cyclase in mammalian cells, has been shown to bind cAMP-sensing domains with weaker affinity^{14,33}. To examine the response of G-Flamp1 to cGMP, the sodium nitroprusside (SNP), a nitric oxide (NO) donor that activates soluble guanylyl cyclase, was utilized to induce a large amount of cGMP in living cells. When HEK293T cells were treated with 25 μ M SNP, the low-affinity ($K_d \sim 1.09 \mu$ M) cGMP sensor Green cGull³⁴ showed a maximum $\Delta F/F_0$ of 210% while G-Flamp1 showed no detectable signal change (Fig. 2f and Supplementary Fig. 18), indicating the high specificity of G-Flamp1 towards cAMP over cGMP. Regarding reversibility, HEK293T cells expressing G-Flamp1 exhibited increased fluorescence upon 100 nM Iso treatment and then returned to basal level after addition of 15 μ M β -AR antagonist propranolol (Prop) (Fig. 2g).

Besides cell lines, primary cortical neurons were also utilized to examine cellular localization and fluorescence change of G-Flamp1. Again, G-Flamp1 was evenly distributed in neuronal soma and neurites. Upon application of 100 μ M AR agonist norepinephrine (NE) or 1 μ M Iso, a $\Delta F/F_0$ of ~100–150% was observed in both soma and neurites (Fig. 2h, i). Upon 60 μ M Fsk treatment, G-Flamp1 showed significant fluorescence increase with a $\Delta F/F_0$ of 500–700% in both soma and neurites (Supplementary Fig. 19). Taken together, G-Flamp1 shows low cytotoxicity, great distribution, decent brightness, large dynamic range and high sensitivity in cell lines and primary neurons at 37 °C.

In vivo two-photon imaging of cAMP dynamics in zebrafish

To test whether G-Flamp1 can function in intact living organisms, we first utilized optically transparent zebrafish embryos under Fsk

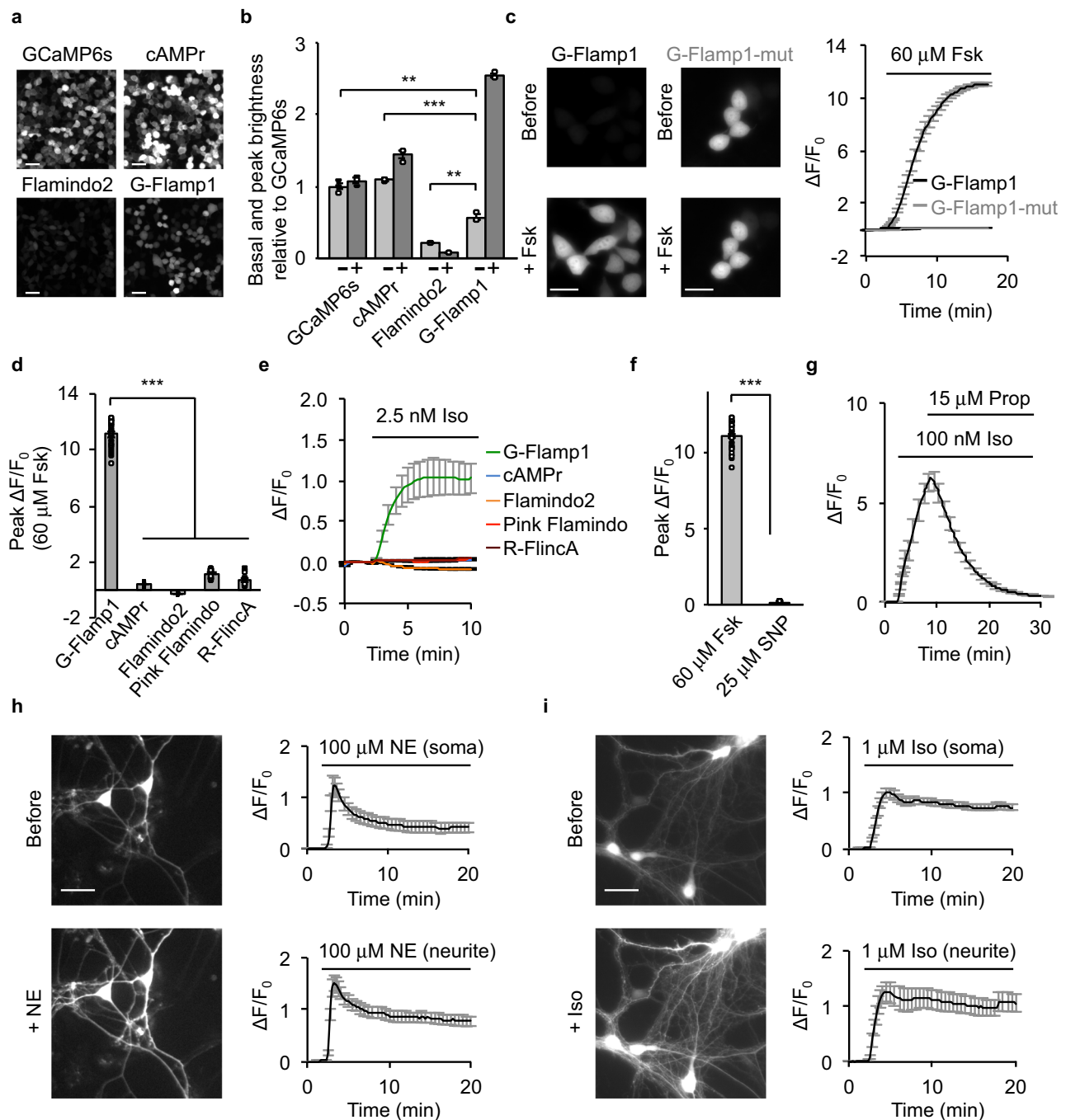


Fig. 2 | Characterization of G-Flamp1 in mammalian cells. **a** Representative fluorescence images of the sensors in resting HEK293T cells from three independent experiments. Scale bars: 50 μm . **b** Basal and peak brightness of the sensors in HEK293T cells (excited at 488 nm). $n = 3$ cultures for each indicator. $P = 0.0033$, 8.6×10^{-4} and 0.0069 between G-Flamp1 and GCaMP6s, cAMP_r and Flamindo2, respectively. The minus and plus signs denote without and with 15 min Forskolin (Fsk) treatment, respectively. **c** Representative fluorescence images (left) and traces of $\Delta F/F_0$ (right) excited at 450 nm in response to 60 μM Fsk in HEK293T cells. $n = 34$ (G-Flamp1) and 22 (G-Flamp1-mut) cells from 3 independent experiments. Scale bars: 20 μm . **d** Peak $\Delta F/F_0$ in HEK293T cells. $n = 34$ (G-Flamp1), 33 (cAMP_r), 42 (Flamindo2), 34 (Pink Flamindo) and 18 (R-Flinca) cells from 3 independent experiments. $P = 3.5 \times 10^{-38}$, 2.8×10^{-38} , 1.4×10^{-41} , and 1.6×10^{-46} between G-Flamp1 and cAMP_r, Flamindo2, Pink Flamindo and R-Flinca, respectively. **e** Representative

traces of $\Delta F/F_0$ in response to 2.5 nM Iso in HEK293T cells. $n = 30$ (G-Flamp1), 28 (cAMP_r), 27 (Flamindo2), 27 (Pink Flamindo) and 14 (R-Flinca) cells from three independent experiments. **f** Peak $\Delta F/F_0$ of G-Flamp1 in response to 60 μM Fsk or 25 μM SNP in HEK293T cells. $n = 34$ (Fsk) and 15 (SNP) cells from three independent experiments. $P = 4.3 \times 10^{-38}$. **g** Representative traces of $\Delta F/F_0$ in response to 100 nM Iso followed by 15 μM Prop in HEK293T cells. $n = 17$ cells from 3 cultures. Representative fluorescence images (left) and traces of $\Delta F/F_0$ in response to 100 μM NE (**h**) or 1 μM Iso (**i**) in cortical neurons. $n = 10$ (soma) and 9 (neurite) regions of interest (ROIs) of 10 neurons from 3 cultures in **h** and $n = 28$ (soma) and 14 (neurite) ROIs of 28 neurons from 3 cultures in **i**. Scale bars: 20 μm . Data are presented as mean \pm SEM in **b**, **c** (right), **d–h** (right) and **i** (right). Two-tailed Student's *t*-tests were performed for above statistical analysis. *** $P < 0.001$ and ** $P < 0.05$. Source data are provided as a Source Data file.

stimulation. We injected UAS:G-Flamp1(or G-Flamp1-mut)-T2A-NLS-mCherry (nuclear-localized mCherry) plasmid into the embryos of *EF1 α :Gal4* transgenic zebrafish at one-cell stage (Supplementary Fig. 20a). The expression of G-Flamp1 or G-Flamp1-mut sensor was confirmed by green fluorescence in cells of the developing central nervous system. Brain ventricular injection of 120 μ M Fsk but not PBS elicited a robust fluorescence increase with a $\Delta F/F_0$ of 450% for G-Flamp1, whereas no signal changes were observed for G-Flamp1-mut (Supplementary Fig. 20b–d). These data indicate that G-Flamp1 sensor has high sensitivity for in vivo cAMP detection in zebrafish.

In vivo two-photon imaging of cAMP dynamics in *Drosophila*

The importance of cAMP in associative learning, where it serves as a coincidence detector by integrating concurrent signal inputs from both conditioned and unconditioned stimuli, has been well documented across phyla^{35,36}. In *Drosophila*, cAMP signaling in the mushroom body (MB) Kenyon cells (KCs) is indispensable for acquiring aversive memory, such as associating specific odor with punitive electrical shock^{37,38}. To reveal cAMP dynamics in living organisms, we generated transgenic flies expressing G-Flamp1 in MB KCs and performed functional two-photon imaging in MB medial lobe (Fig. 3a–c). When the fly was exposed to either 1 s odor puff or subsequent 0.5 s electrical shock, we observed time-locked fluorescence responses with a $\Delta F/F_0$ of ~100% (Fig. 3d, e). Compared with the MB β' lobe that has similar responses among different compartments, the MB γ lobe exhibited compartmentally heterogeneous responses to specific stimuli, as the largest responses were observed in γ_4 to odor and in γ_2 to electrical shock. These compartmentalized signals were not due to the unequal expression level or saturation of the sensor, since 100 μ M Fsk perfusion elicited a homogeneous $\Delta F/F_0$ of around 250% (Fig. 3f). G-Flamp1 specifically reported cAMP changes since the GFP alone expressed in KCs showed no significant response to 1 s odor, 0.5 s shock or 100 μ M Fsk perfusion (Fig. 3d–f). Moreover, both the rise and decay time (τ_{on} and τ_{off}) for cAMP changes evoked by odor or shock were similar in different compartments (Fig. 3g, h). The distinct compartmental cAMP signals in the MB during odorant or body shock delivery suggest the functional independence of different MB compartments in associative learning^{39,40}, consistent with the heterogeneous MB dopamine (DA) signals^{41,42}. Collectively, these results show that G-Flamp1 allows detection of physiologically relevant cAMP dynamics in *Drosophila* with high fidelity and good spatiotemporal resolution, and sheds light on the role of compartmentally separated cAMP signaling in the olfactory learning process.

In vivo two-photon imaging of cAMP dynamics in mouse cortex

To demonstrate the utility of G-Flamp1 sensor to detect physiologically relevant cAMP dynamics in living animals, we performed head-fixed two-photon imaging in the motor cortex (M1) of awake mice during forced locomotion (Fig. 4a), which was reported to be associated with increased neuromodulator and PKA activities⁴³. We co-expressed G-Flamp1 (or G-Flamp1-mut) and the red calcium sensor jRGECO1a in the neurons of motor cortex and imaged the layer 2/3 region (Fig. 4b). We observed running-induced, cell-specific, cAMP and calcium signals (Fig. 4c). Interestingly, neurons in M1 area could be further divided into three groups based on the cAMP dynamics: ~64% neurons with fast increase of cAMP (higher average response during the first 30 s after the onset of forced running) and no significant change of calcium, ~30% neurons with slow increase of cAMP and little change of calcium, and ~6% neurons with decrease of cAMP and increase of calcium (Fig. 4c). The first two groups had no significant correlation while the third group showed a negative correlation between the cAMP and calcium signals by the Pearson correlation analysis (Supplementary Fig. 21). As a control, G-Flamp1-mut showed little fluorescence change (Fig. 4d). Distribution analysis and averaged traces of $\Delta F/F_0$ of G-Flamp1 and jRGECO1a further confirmed the heterogeneity of

neuronal responses (Fig. 4e–i). Regarding the heterogeneous cAMP signals in the neurons, they may be elicited by different upstream neuromodulators in response to the forced running and/or differential expression of neuromodulatory receptor subtypes⁴⁴. In addition, the inconsistency between the cAMP signals and calcium activities in the majority of neurons indicates that they are regulated in a relatively independent manner.

In vivo fiber photometry recording of cAMP dynamics in mouse nucleus accumbens

To test the ability of G-Flamp1 sensor to report cAMP dynamics in deep brain regions, we measured cAMP levels in the nucleus accumbens (NAc) using fiber photometry in mice performing a classical conditioning task. The NAc was chosen because it is recently reported that PKA, a downstream molecule in the cAMP signaling pathway, plays a critical role in dopamine-guided reinforcement learning behavior⁴⁵. We first injected an adeno-associated virus (AAV) expressing G-Flamp1 into the NAc and measured fluorescence signals using fiber photometry while the mice were trained to perform the conditioning task (Fig. 5a). In the task, the mice were trained to learn the associations between three auditory cues (conditioned stimulus, CS) and respective outcomes (unconditioned stimulus, US) (Fig. 5b; 8 kHz pure tone \rightarrow water; white noise \rightarrow brief air puff to the animal's face; 2 kHz pure tone \rightarrow nothing). Well-trained mice had a high licking rate selectively to the water-predictive sound, and the G-Flamp1 signal showed a large increase immediately after the onset of the water-predictive sound, while responses to the other two sounds were much smaller (Fig. 5c–e).

Interestingly, the G-Flamp1 signal in the water trials exhibits characteristic dynamics during the learning process: in naïve mice, there was a notable signal increase to water delivery; throughout the training, the magnitude of the water-evoked response decreased, while a response to the reward-predictive sound gradually increased (Fig. 5f–h). This dynamic change mimics the dopamine signal during classical conditioning^{42,46}, suggesting that the increase in cAMP in the NAc is mainly driven by dopamine release. To confirm this, we thus blocked the dopamine D1 receptor using SCH23390 (i.p.) and observed a significantly reduced cAMP signal (Fig. 5i, j). The distinct cAMP activities in response to different stimuli and its dynamic change at different stages of the task demonstrate a highly specific and adaptive control of intracellular messengers in the changing external environment. Together, these results demonstrate that the G-Flamp1 sensor has a high signal-to-noise ratio and high temporal resolution to report the dynamic changes of cAMP in behaving mice.

Discussion

In this study, we described G-Flamp1, a high-performance GEAI engineered by inserting cpGFP into the bacterial mCNBD. G-Flamp1 exhibits a maximum $\Delta F/F_0$ of ~1100% in living cells under both one-photon and two-photon excitation, thus being the most responsive GEAI. We also demonstrated the utility of G-Flamp1 in reporting cAMP dynamics in various model organisms with optical imaging and fiber photometry methods. To the best of our knowledge, this is the first time to demonstrate the cAMP activity in cortical neurons with a single-cell resolution in behaving animals and the dynamic change of cAMP level throughout associative learning in the mammalian brain, respectively. Given the high sensitivity and direct readout, G-Flamp1 would be useful for screening drugs targeting cAMP signaling pathways using high-content screening assays.

Our in vivo two-photon imaging experiments in mouse cortex showed that G-Flamp1 is able to detect bidirectional cAMP changes with single-neuron resolution (Fig. 4). Given that multiple neuromodulators can be released in the motor cortex⁴³, different downstream signaling processes are expected to be induced in cortex neurons, which might partially explain the discrepancy between cAMP signal and calcium activity in our results (Fig. 4f). Further studies are needed

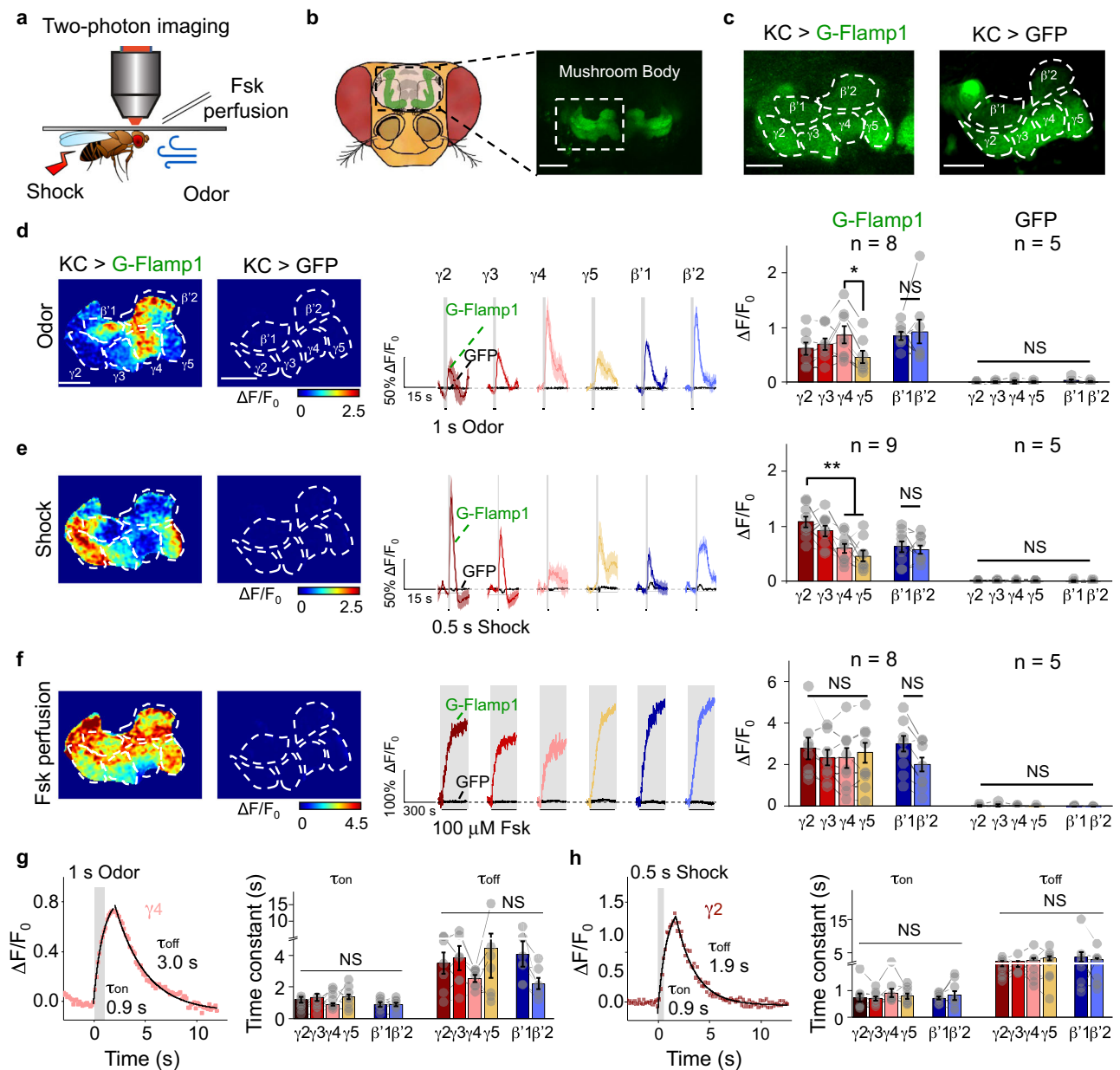


Fig. 3 | G-Flamp1 reports compartmental cAMP dynamics evoked by physiological stimuli in *Drosophila* through in vivo two-photon imaging. **a** Schematics of in vivo two-photon imaging setup in *Drosophila* with multiple stimuli.

b Schematics and fluorescent images of *Drosophila* MB KCs. Scale bar: 50 μ m.

c Representative fluorescence images of *Drosophila* MB KCs expressing G-Flamp1 (left) or GFP (right) from 25 or 5 independent experiments. Scale bars: 25 μ m.

d Representative pseudo-color image (left), traces (center) and quantification (right) of $\Delta F/F_0$ to 1 s odor. Representative traces were 3-trial average from one fly. $n = 8$ and 5 for G-Flamp1 and GFP groups, respectively. Two-tailed Student's t -tests were performed in d3. $P = 0.21$, 0.37 and 0.048 between γ_4 and γ_2 , γ_3 and γ_5 , respectively. Scale bars: 25 μ m. **e** Similar to **d** except that 0.5 s electrical shock was applied to the fly. $n = 9$ and 5 for G-Flamp1 and GFP groups, respectively. Two-tailed

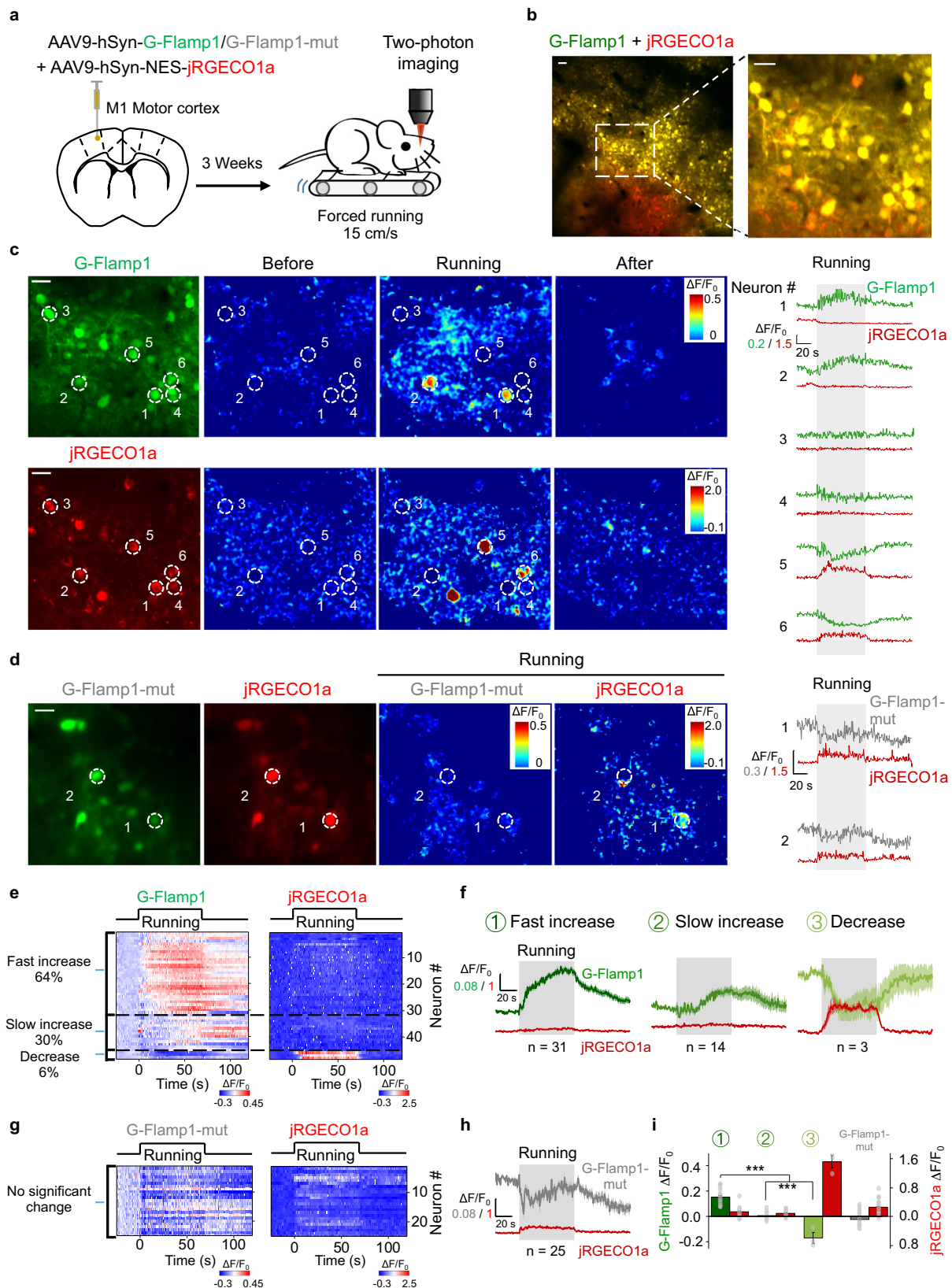
Student's t -tests were performed in e3. $P = 0.368$, 0.007 and 0.001 between γ_2 and γ_3 , γ_4 and γ_5 , respectively. **f** Similar to **d** except that 100 μ M Fsk was perfused to the fly brain. $n = 8$ and 5 for G-Flamp1 and GFP groups, respectively. Two-tailed Student's t -tests were performed in f3. $P > 0.05$ between γ_2 , γ_3 , γ_4 and γ_5 .

g Representative traces of $\Delta F/F_0$ of G-Flamp1 in γ_4 evoked by 1 s odor. Data were fitted with single-exponential functions (left). Quantifications of τ_{on} and τ_{off} for different MB compartments were shown (right). $n = 8$ for each compartment. One-way ANOVA test was performed. NS, not significant. **h** Similar to **g** except that 0.5 s electrical shock was applied to the fly. $n = 9$ for each compartment. One-way ANOVA test was performed. NS, not significant. Quantifications in **d–g** (right) and **h** (right) are shown as mean \pm SEM. ** $P < 0.01$, * $P < 0.05$ and NS not significant. Source data are provided as a Source Data file.

to dissect out the underlying regulation mechanisms and potential functions. Nevertheless, together with other spectrally compatible sensors, G-Flamp1 will be a useful tool for investigating signal transduction networks in behaving animals.

In NAc, dopamine release can cause opposite dynamics to cAMP signaling through D1 or D2 receptors, which are expressed on two types of medium spiny neurons (MSNs; D1-MSNs and D2-MSNs)⁴⁷. Thus, the different changes in the cAMP signals evoked by rewarding

(water) or aversive (puff) stimuli may originate from D1- or D2-MSNs, respectively. To confirm this, further fiber photometry recording and/or single-cell-resolution imaging studies with G-Flamp1 labeled D1- or D2-MSNs are required. Additionally, cAMP signals measured in NAc were attenuated but not abolished by D1 receptor blockade, likely due to a submaximal dose of D1 receptor antagonist used, because a larger dose is known to make the animals unresponsive in the task⁴⁸.



Very recently, three genetically encoded cAMP indicators (single FP-based Pink Flamindo and cADDis, FRET-based cAMPFIRE-L) have been used for two-photon imaging of cAMP in behaving mice^{44,49,50}, building up the relationship between cAMP signaling and animal behavior. Given its high performance, G-Flamp1 would be an alternative and better choice for in vivo cAMP imaging. Compared to

GCaMPs, the potential capabilities of G-Flamp1 are only beginning to be realized and will be fully explored in the future. Combined with miniaturized microscopes⁵¹, G-Flamp1 would be able to visualize cAMP activity patterns in freely moving animals. Moreover, by utilizing G-Flamp1 along with biological models, some long-standing biological questions may be addressed. For example, it may be possible to

Fig. 4 | G-Flamp1 reveals forced running-induced cAMP signals of neurons in the mouse motor cortex through in vivo two-photon imaging. **a** Schematic diagram depicting the head-fixed mice on a treadmill together with two-photon imaging of the motor cortex co-expressing G-Flamp1 (or G-Flamp1-mut) and jRGECO1a. **b** Two-photon imaging of the mouse motor cortex co-expressing G-Flamp1 and jRGECO1a. The fluorescence of G-Flamp1 (green) and jRGECO1a (red) was merged and shown in yellow pseudo-color. Scale bars: 50 μm . **c** Representative images of probe expression in mice (left), the pseudo-color images (center) and the traces (right) of $\Delta F/F_0$ in response to forced running. White dashed circles with a diameter of 20 μm indicate selected ROIs covering soma for analysis. Scale bars: 30 μm . **d** Representative images of probe expression in mice (left), the pseudo-color images of $\Delta F/F_0$ (center) during the forced running phase and the traces of $\Delta F/F_0$ (right) in response to forced running. The white dashed circles with a diameter of 20 μm indicate selected ROIs covering the soma for analysis. Scale bar: 30 μm .

e Heatmaps of G-Flamp1 and jRGECO1a responses during running task. Each row denotes a single cell's response. $n = 48$ cells from three mice. **f** Averaged traces of $\Delta F/F_0$ for G-Flamp1 and jRGECO1a for neurons from three groups of different cAMP dynamics. $n = 31, 14$ and 3 cells for fast increase, slow increase and decrease groups, respectively. **g** Heatmaps of G-Flamp1-mut and jRGECO1a responses during running task. $n = 25$ cells from three mice. **h** Averaged traces of $\Delta F/F_0$ for G-Flamp1-mut and jRGECO1a during forced running process. **i** Quantification of the average $\Delta F/F_0$ during the first 30 s after the onset of forced running for G-Flamp1, G-Flamp1-mut and jRGECO1a in **e, g**. $n = 31, 14$, and 3 neurons from three mice for groups 1, 2 and 3, respectively. $n = 25$ from three mice for G-Flamp1-mut group. Two-tailed Student's t -tests were performed. $***P < 0.001$. Quantifications are shown as mean \pm SEM in **f, h, i** with shaded regions or error bars indicating the SEM. Source data are provided as a Source Data file.

understand how cAMP is regulated in drug addiction and stress-induced behaviors^{52,53}.

Engineering and structural analysis of G-Flamp1 reveals two interesting findings. First, modest conformation changes of insertion sites in sensing domain can induce large fluorescence change of cpFP. Generally, insertion sites with large structural change are chosen to make large fluorescence change sensors⁵⁴. However, the insertion site in G-Flamp1 is near the mouth of the cAMP-binding pocket and undergoes a small conformational change upon cAMP binding²⁰. Second, linkers connecting sensing domain and cpFP can adopt a more rigid conformation. Although random coil and short α -helical turns are observed in single-FP sensors with crystal structures available^{27–29}, the first linker along with its flanking sequences in cAMP-bound G-Flamp1 folds as a long β -strand.

Despite its high performance, G-Flamp1 could be further improved for specific applications. It would be feasible to generate G-Flamp1 variants with improved properties through structure-guided mutagenesis. For example, G-Flamp1 variants with higher basal fluorescence may be useful to monitor cAMP activities in fine structures with high signal-to-background ratio. In addition, G-Flamp1 variants with higher affinity would enable more sensitive detection of subtle changes of cAMP at submicromolar concentration. Besides green G-Flamp1 and its variants, red/near-infrared and photoconvertible sensors using mICNBD as a sensing domain could be developed to visualize cAMP changes in deep tissue and permanently mark cells with cAMP activities, respectively, which has been realized in calcium sensors^{55–57}.

Methods

This research complies with all relevant ethical regulations approved by Shenzhen Institute of Advanced Technology-CAS, Peking University, and Institute of Neuroscience-CAS.

Chemicals and reagents

cAMP-Na (Cat. No. A6885) and cGMP-Na (Cat. No. G6129) were purchased from Sigma-Aldrich. cAMP (Cat. No. C107047), noradrenaline bitartrate monohydrate (N107258), isoproterenol hydrochloride (Cat. No. I129810), and propranolol (Cat. No. S133437) were purchased from Aladdin (Shanghai, China). Forskolin (Cat. No. S1612) and Enhanced Cell Counting Kit-8 (CCK-8) (Cat. No. C0041) were purchased from Beyotime Biotechnology (Shanghai, China). The CREB antibody 48H2 (Cat. No. 9197S) and phospho-CREB (Ser133) antibody 87G3 (Cat. No. 9198S) were purchased from Cell Signaling Technology, Inc.

Plasmid construction

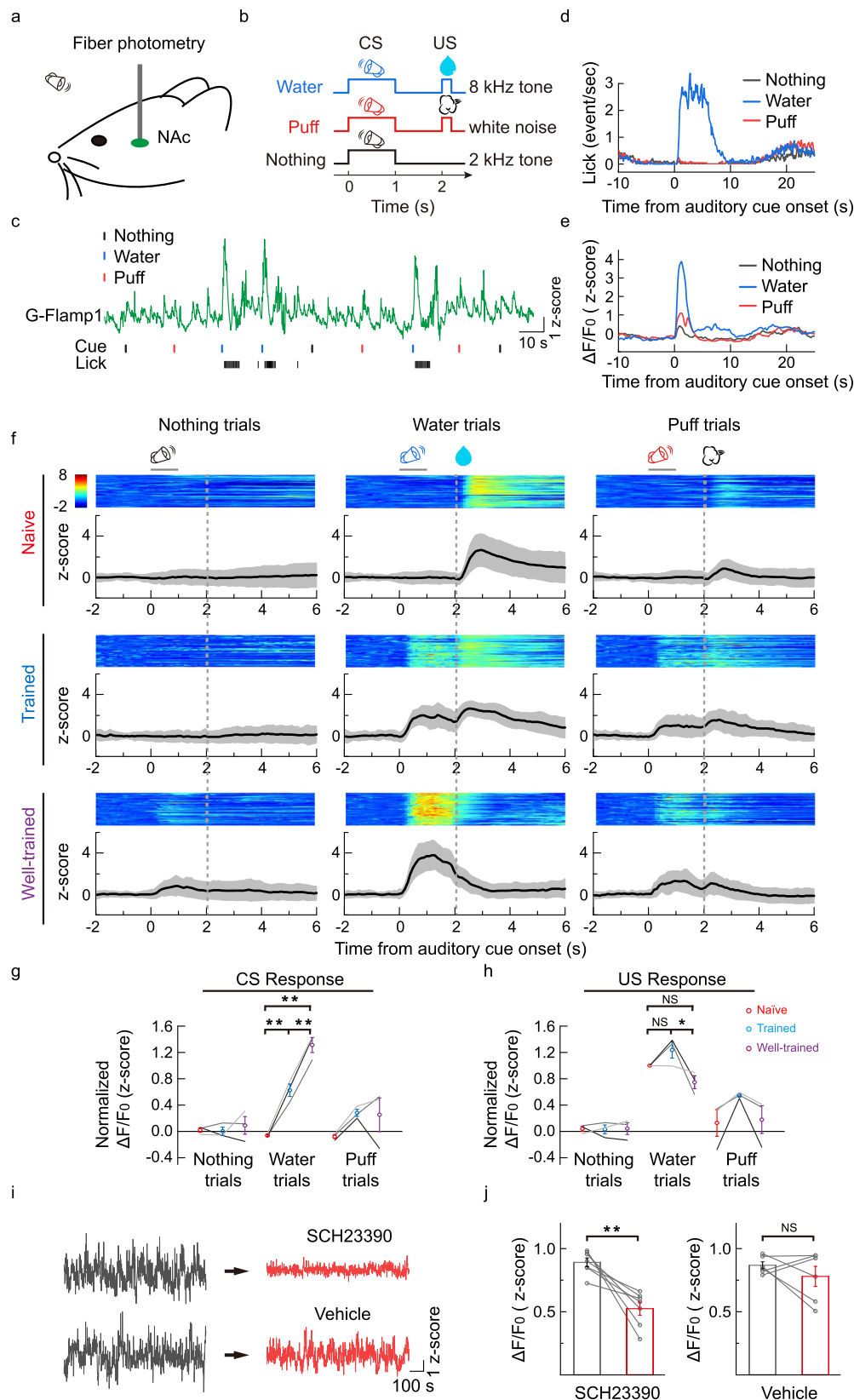
Plasmids were generated using the Infusion method (Takara Bio USA, Inc.). PCR fragments were amplified using PrimerStar (normal PCR or site-directed mutagenesis) or Taq (random mutagenesis) DNA polymerases. When needed, overlap PCR was exploited to generate the intact DNA fragment for Infusion. All PCR primers were purchased

from Sangon Biotechnology Co., Ltd (Shanghai, China). Plasmids p2lox-cAMP_r (Cat. No. 99143), pAAV.Syn.GCaMP6f.WPRE.SV40 (Cat. No. 100837), pAAV.CamKII.GCaMP6s.WPRE.SV40 (Cat. No. 107790) and pAAV.Syn.NES-jRGECO1a.WPRE.SV40 (Cat. No. 100854) were purchased from Addgene. The DNA sequences of Flamindo2, Pink Flamindo, mICNBD and jRCaMP1b were synthesized by Genscript^{11,13,16,58}. pcDNA4-R-Flnca was a gift from Dr. Kazuki Horikawa (Tokushima University). To express fluorescent proteins or sensors in bacterial or mammalian cells, cDNAs of FPs or sensors were subcloned into pNCS or pCAG vector⁵⁹, respectively. To improve G-Flamp1's stability in mammalian cells, its N-terminal arginine immediately after the initiator methionine was deleted⁶⁰. cDNAs of G-Flamp1, G-Flamp1_{opt} and G-Flamp1-mut_{opt} (opt: mouse/human codon optimized) were subcloned into AAV vectors to make AAV2-CAG-G-Flamp1, AAV2-hSyn-G-Flamp1, and AAV2-hSyn-G-Flamp1-mut. pCAG-mEGFP and pCAG-mCherry were kept in our lab. All constructs were confirmed by DNA sequencing (Sangon Biotechnology Co., Ltd, Shanghai, China).

Screening of cAMP sensors expressed in bacteria

Two mICNBD fragments (Gly213-Pro285 and Asn286-Ala355) and cpGFP with linkers from GCaMP6f were amplified, overlapped and cloned into BamHI/EcoRI sites of pNCS vector with an N-terminal 6 \times His tag for protein purification. Site-directed and random mutagenesis were performed via overlap PCR and error-prone PCR, respectively. The DNA libraries were transformed into DH5 α cells lacking adenylate cyclase gene *CyaA* (DH5 α - Δ CyaA), which were generated by the phage λ Red recombination system⁶¹. After overnight incubation at 34 $^{\circ}\text{C}$, colonies with different fluorescence intensities on the LB agar plates were screened by eye in a BlueView Transilluminator (Vernier) with the 400–500 nm excitation light and a yellow acrylic long-pass filter, or by fluorescence imaging in a home-made imaging system with 480/20 nm excitation and 520/20 nm emission filters. To quantitatively compare the brightness of selected variants, bacterial patches on the agar plates cultured overnight at 34 $^{\circ}\text{C}$ were: (1) imaged in the home-made system mentioned above and analyzed by ImageJ software (National Institutes of Health) (Supplementary Fig. 3d, f), or (2) collected in PBS and the OD₆₀₀-normalized fluorescence intensities were measured using Tecan i-control 1.11 software of the Infinite M1000 fluorometer (Tecan) (Supplementary Fig. 11).

The fluorescence changes of cAMP sensors in response to cAMP were examined using the bacterial lysate. Briefly, selected bacterial colonies were patched on LB agar plate and grew at 25 $^{\circ}\text{C}$ for 3 days. The harvested bacterial cells were suspended in 1 mL of HEPES buffer (150 mM KCl and 50 mM HEPES-KOH, pH 7.15) and lysed by sonication followed by centrifugation. 120 μL of clear lysates were mixed with 2 μL of HEPES buffer or 2 μL of 30 mM cAMP or 2 μL of 30 mM cGMP and then the fluorescence were recorded with an Infinite M1000 PRO fluorometer (Tecan). The fluorescence change $\Delta F/F_0$ was calculated as $(F - F_0)/F_0$, where F and F_0 are fluorescence intensities of sensors in the presence or absence of cAMP (or cGMP), respectively.



Bacterial protein expression, purification, and in vitro characterization

DH5 α - Δ CyaA cells were transformed with pNCS-FP or sensor and cultured overnight at 34 °C. The colonies were then patched on LB agar plates and cultured at room temperature for 3 days. The harvested bacterial cells were suspended in HEPES buffer and lysed by sonication.

His-tagged recombinant proteins were purified with cobalt-chelating affinity chromatography (Pierce) and desalted with HEPES buffer (pH 7.15) using the gel filtration column (Bio-Rad).

Quantum yields were determined using mEGFP as a standard (QY = 0.60). Extinction coefficients were determined according to the 'base denatured chromophore' method⁵⁹. pH titrations were

Fig. 5 | G-Flamp1 reports cAMP activities during an auditory Pavlovian conditioning task in the mouse NAc through in vivo fiber photometry. **a** Schematic for fiber photometry recording of G-Flamp1-expressing neurons from the NAc of a head-fixed mouse during an auditory Pavlovian conditioning task. **b** Schematic diagrams for the behavioral tasks. The mouse was trained to learn associations between three different auditory cues (conditioned stimulus, CS) and corresponding outcomes (unconditioned stimulus, US). **c** Exemplar trace of G-Flamp1 signal from a well-trained mouse encompassing nine sequential trials. The timings of cues (CS) and the lick responses (US) are indicated below. **d** Exemplar time-aligned lick responses in **c**. **e** Exemplar time-aligned G-Flamp1 signals in **c**. **f** Exemplar time-aligned pseudo-color images and averaged traces (mean shaded with \pm standard deviation) from a mouse in naïve, trained and well-trained sessions. **g, h** Group analysis of the normalized peak Z scores of cAMP signals to CS and US in

different sessions. Each trace (coded with specific gray value) represents data from one animal ($n = 3$ mice). Values with error bars indicate mean \pm SEM. Two-tailed Post hoc Tukey's tests were performed. Water trial CS responses: $P = 0.00312$ between naïve and trained, $P = 6.92772 \times 10^{-5}$ between naïve and well-trained, $P = 0.00312$ between trained and well-trained. Water trial US responses: $P = 0.23198$ between naïve and trained, $P = 0.19808$ between naïve and well-trained, $P = 0.02021$ between trained and well-trained. **i** Exemplar recording of G-Flamp1 signals in NAc before and after injection (i.p.) of DIR antagonist SCH23390 or vehicle. **j** Quantification of G-Flamp1 signals before and after SCH23390 ($n = 7$ recordings from 3 mice, $P = 0.0038$) or vehicle ($n = 6$ recordings from 3 mice, $P = 0.34$) injection. Data are presented as mean \pm SEM. Two-tailed Student's *t*-tests were performed in **j**. ** $P < 0.01$, * $P < 0.05$ and NS not significant. Source data are provided as a Source Data file.

performed using a series of pH buffers ranging from 2 to 10.5 (50 mM Citrate-Tris-Glycine buffer. The desired pH was achieved by adding 2 M of sodium hydroxide or 2 M of hydrochloric acid)⁵⁹. The fluorescence excited at 450 nm in different pH buffers was measured using an Infinite M1000 PRO fluorometer. The fluorescence intensities were plotted against the pH values and the pKa was determined by fitting the data to the Henderson–Hasselbalch equation⁶².

To determine the affinity of G-Flamp1, 1 μ M of purified protein in HEPES buffer was mixed with varying concentrations of cAMP (0.001, 0.01, 0.1, 0.5, 1, 2, 5, 10, 25, 100, and 500 μ M) or cGMP (0.01, 0.1, 0.5, 1, 2, 5, 10, 25, 100, 500, 1000, and 2000 μ M). The fluorescence excited at 450 nm were recorded with an Infinite M1000 PRO fluorometer. The fluorescence change $\Delta F/F_0$ was plotted against the cAMP or cGMP concentrations and fitted by a sigmoidal binding function to determine the K_d and Hill coefficient⁵⁶.

The association rate constant (k_{on}) and dissociation rate constant (k_{off}) between G-Flamp1 and cAMP were determined using Pro-data Chirscan 4.5.1840.0 software of the Chirscan spectrometer equipped with an SX20 Stopped-Flow accessory (Applied Photophysics Ltd). Briefly, 1.6 μ M of protein solution was mixed 1:1 with cAMP of different concentrations (0.5, 1, 2, 5, 10, and 50 μ M) and the fluorescence excited at 480 nm were measured with a 520/30 nm filter. The data were fitted using the following single-exponential function^{63,64}: $F(t) = F_0 + A_{obs} \times \exp(-k_{obs} \times t)$, where $F(t)$ is the value of fluorescence increase at time t , F_0 is the final value of fluorescence increase, A_{obs} is the amplitude of the exponentially decreasing part and k_{obs} is the observed first-order rate constant. The k_{on} and k_{off} were fitted using the following equation: $k_{obs} = k_{on} \times [cAMP] + k_{off}$, where [cAMP] is the concentrations of cAMP used. The association and dissociation half-time t_{on} and t_{off} were calculated as $\ln 2 / (k_{on} \times [cAMP])$ and $\ln 2 / k_{off}$, respectively.

To get the excitation wavelength-dependent brightness and $\Delta F/F_0$ under two-photon excitation, purified proteins were excited with wavelengths from 700 to 1000 nm with a 20 nm step size on a Nikon-TI two-photon microscope equipped with a Ti:sapphire laser and a 25 \times 1.4 NA water immersion objective. Images were captured using NIS-Elements AR 4.30.01 software. The 495–532 nm fluorescence were collected and the intensities were then normalized to laser powers at different wavelengths.

Crystallization and structure determination of G-Flamp1

The coding sequence of G-Flamp1 was cloned into pSUMO expression vector with 6 \times His and SUMO tags at the N-terminus. *E. coli* BL21 (DE3) pLysS cells were transformed with pSUMO-G-Flamp1 and grew on LB agar overnight at 34 °C. Colonies were expanded in LB media at 34 °C and induced at OD 0.6 with 0.1 mM IPTG for additional 3 h at 34 °C. The harvested cells were lysed with a high-pressure homogenizer at 1000 bar in binding buffer (20 mM Imidazole, 500 mM NaCl, 20 mM Tris-HCl, pH 7.5). The protein was purified on a Ni Sepharose 6 Fast Flow column (GE Healthcare) under gravity and eluted with the elution buffer (300 mM Imidazole, 500 mM NaCl, 20 mM Tris-HCl, pH 7.5). The elution was incubated with ULP1

protease and dialyzed against the dialysis buffer (100 mM NaCl, 10 mM β -ME, 20 mM Tris-HCl, pH 7.5) overnight at 4 °C and purified again on a Ni Sepharose 6 Fast Flow column to remove the 6 \times His and SUMO tags and ULP1 protease. After concentration, the flow-through was loaded on a Hiload 16/600 Superdex 200 pg column (GE Healthcare) in the dialysis buffer for further purification. Fractions containing purified protein were pooled, concentrated, and incubated with cAMP at 1:5 molar ratio for 1 h at 4 °C. Crystals were grown using the hanging drop vapor diffusion method with 2 μ L protein solution (10 mg/mL) and 2 μ L reservoir solution (40% v/v PEG 400, 100 mM Imidazole, pH 8.0). The mixture was equilibrated against 300 μ L reservoir solution at 20 °C for 5 days. Crystals were flash-frozen for X-ray diffraction data collection. A data set was collected to 2.2 Å resolution at wavelength 1.0000 Å on beamline BL17B1 of the Shanghai Synchrotron Radiation Facility (SSRF). Data sets were processed with HKL3000 v716.1⁶⁵. The structure was solved by molecular replacement method using Phaser 2.7.16 software⁶⁶ implanted in the Phenix program suite 1.17.1⁶⁷, with cpGFP (PDB: 3EVP) and mICNBD (PDB: 3CLP) as search models. The model building was performed manually using the Coot 0.9⁶⁸.

Metadynamics molecular dynamics simulations

The crystal structure of cAMP-bound G-Flamp1 (PDB ID: 6M63) was used to perform the metadynamics MD simulations for the energy stable state(s) of both cAMP-bound and cAMP-free forms. The Schrödinger Protein Preparation Wizard (Maestro Version 13.0.135, MMshare version 5.6.135) was used for protein preparation⁶⁹. For cAMP-bound form modeling, the waters beyond 3.0 Å were removed and the chromophore was set to be deprotonated. For the cAMP-free form modeling, the cAMP was further removed. Both cAMP-bound and cAMP-free systems were built using Desmond System builder (Schrödinger Release 2021-4, <https://www.schrodinger.com/>). The TIP3P solvent model was used, and the size of orthorhombic water box was 10 \times 10 \times 10 Å. Nine sodium ions and 0.15 M sodium chloride were added to neutralize the system. The OPLS4 force field was applied⁷⁰ and the previously reported metadynamics procedure was used⁷¹. The system was relaxed for 1 ps before simulation. Simulation conditions in the isothermal-isobaric (NPT) ensemble were as follows: 1 bar of pressure, 300 K of temperature, 0.03 kcal/mol of initial Gaussian hill height, 0.09 ps interval, 0.05 Å Gaussian width, and 1.2 kcal/mol of well-tempered parameter. The Nose-Hoover chain was used for thermostat. PyMOL 2.4.2 was used for structural analysis. The two collective variables (CVs) shown in Supplementary Fig. 10 are two dihedral angles from the side chain of Trp 75.

Cell culture, DNA transfection, and virus infection

HEK293T, HeLa, and CHO cells were acquired from ATCC and were maintained in DMEM (HEK293T and HeLa cells) or DMEM/F12 (CHO cells) supplemented with FBS (10% v/v) and penicillin/streptomycin (both at 100 units/mL) in a humidified incubator at 37 °C with 5% CO₂. Plasmid transfections of cultured cells were performed according to

the Lipofectamine 2000 protocol. Primary cortical neurons were prepared from embryonic day 16 (E16) BALB/c mice as previously described⁷² and kept in Neurobasal medium with B27 (2%) and penicillin/streptomycin (both at 100 units/mL). DIV (days in vitro) 7–9 neurons were infected with AAV8-CAG-G-Flamp1 virus prepared using PEG8000/NaCl solution and imaged at DIV13–18.

Stable cell line generation and proliferation rate measurement

The CAG promoter and G-Flamp1 were inserted between two terminal inverted repeats for *piggyBac* transposase (PBase) in pPB-LR5 vector⁷³ to make pPB-LR5-CAG-G-Flamp1. HEK293T cells in a 24-well plate were co-transfected with 1 μ g of pCMV-hyperactive PBase⁷³ and 1 μ g of pPB-LR5-CAG-G-Flamp1, expanded for 1 week and then sorted for medium-brightness ones with a BD FACSAria III Cell Sorter (BD, USA). The proliferation rates of HEK293T control cells or cells expressing G-Flamp1 were measured using the Enhanced Cell Counting Kit-8 (Cat. No. C0041, Beyotime Biotechnology, Shanghai, China).

Western blotting

Total protein of cells was extracted by radioimmunoprecipitation assay (RIPA) buffer (Beyotime Biotechnology, Shanghai, China) and protein concentrations were measured using BCA Protein Assay kit (Pierce, USA). Equal amounts of protein were separated by 4–10% SDS-PAGE, transferred on PVDF membranes, and immuno-detected with primary antibodies against pCREB and CREB. Signal detection was carried out on a ChemiDoc MP imaging system (Bio-Rad, Image Lab 6.0.1 Build 34 software) using the ECL kit (Cat. No. #32106, Pierce, USA).

Wide-field fluorescence imaging of cAMP indicators in living cells

Wide-field imaging was performed on an Olympus IX83 microscope equipped with a 63×1.4 numerical aperture (NA) objective (HEK293T, HeLa and CHO cells) or a 20×0.75 NA objective (cultured neurons). The microscope was controlled using Micro-manager 1.4.21 software (<https://micro-manager.org>). Briefly, mammalian cells grown on glass-bottom dishes (Cat. No. #FD35-100, World Precision Instruments) were transfected with indicated plasmids and 24 h later serum-starved for 2–4 h. The culture medium was replaced with live cell imaging solution right before fluorescence imaging. Time-lapse images were captured every 15 s. The excitation and emission filters used for different sensors were as follows: ex 480/30 nm and em 530/30 nm for green sensors (GCaMP6s, cAMPr, Flamingo2 and G-Flamp1), ex 568/20 nm and em 630/50 nm for red sensors (jRCaMP1b, Pink Flamingo and R-Flnca), ex 441/20 nm and em 530/30 nm for G-Flamp1. The acquired images were analyzed using ImageJ 1.52p (NIH). Background-subtracted fluorescence was used to calculate fluorescence change $\Delta F/F_0$ that is defined as $(F - F_0)/F_0$, where F_0 is the baseline signal before stimulation.

Two-photon fluorescence imaging of cAMP indicators in living cells

Two-photon imaging was performed on a Nikon-TI two-photon microscope equipped with a Ti:sapphire laser and a 25×1.4 NA water immersion objective. In brief, mammalian cells grown on glass-bottom dishes were transfected with indicated plasmids and 24 h later serum-starved for 2–4 h. The culture medium was replaced with live cell imaging solution right before fluorescence imaging. Cells were excited with a 920 nm laser line and detected via a 495–532 nm filter. Time-lapse images were taken every 5 s and analyzed using ImageJ 1.52p (NIH). Background-subtracted fluorescence intensity was used to calculate $\Delta F/F_0$. The SNR was defined as the ratio of peak $\Delta F/F_0$ to the standard deviation of the basal $\Delta F/F_0$ fluctuation before stimulation.

Fluorescence lifetime measurement of G-Flamp1 indicator in HEK293T cells

Fluorescence lifetime imaging microscopy (FLIM) was performed on the Leica TSC SP8 two-photon microscope (Leica) equipped with a Chameleon laser (Coherent, Inc.) and a 25×0.95 NA water immersion objective. The images were captured using Leica Application Suite X 3.5.6.21594 software. HEK293T cells expressing G-Flamp1 or G-Flamp1-mut were grown on glass-bottom dishes and the culture medium was replaced with live cell imaging solution right before fluorescence imaging. Cells were excited using a 920 nm laser line and fluorescence was collected with a 495–550 nm filter. The lifetime of cells was analyzed using the LAS X FLIM/FCS software (Leica Microsystems CMS GmbH).

Brightness comparison of cAMP indicators in HEK293T cells

Fluorescent intensity of indicators was measured using an Infinite M1000 fluorometer or optical microscope. For fluorometer, HEK293T cells grown in 12-well plates were transfected with pCAG-G-Flamp1, pCAG-cMAPr, pCAG-Flamingo2, pCAG-Pink Flamingo, pCAG-R-Flnca, pCAG-GCaMP6s, pCAG-jRCaMP1b, pCAG-mEGFP or pCAG-mCherry construct separately using Lipofectamine 2000. 48 h later, the cells were washed once with PBS, suspended in live cell imaging solution (Cat. No. A14291DJ, Invitrogen) and transferred to a clear flat-bottom 96-well plate. The fluorescence was recorded under 488 nm excitation. For wide-field or two-photon microscopy, HEK293T cells on glass-bottom dishes were transfected with indicated constructs using Lipofectamine 2000. 48 h later, the culture medium was replaced with live cell imaging solution and fluorescence images were taken under 480/30 nm (one-photon) or 920 nm (two-photon) excitation.

Two-photon imaging in zebrafish

cDNAs of G-Flamp1 (or G-Flamp1-mut) and NLS-mCherry (nuclear-localized mCherry) were subcloned into pTol2-UAS vector to make pTol2-UAS:G-Flamp1 (or G-Flamp1-mut)-T2A-NLS-mCherry, where T2A is a self-cleaving peptide. Plasmids above with Tol2 mRNA were co-injected into EF1 α :Gal4 embryos at one-cell stage. At 52 h post-fertilization, the brain ventricle of larval zebrafish was injected with PBS or 120 μ M Fsk and imaged with a BX61WI two-photon microscope (Olympus) equipped with a 25×1.05 NA water immersion objective. The excitation wavelength was 960 nm and 495–540 nm fluorescence was collected using FV10-ASW 4.2 software. The fluorescence intensities of cells pre- and post-treatment were extracted using ImageJ. Fluorescence change was calculated as $\Delta F/F_0$, where F_0 was the average intensity before treatment.

Two-photon imaging of transgenic flies

The coding sequence of G-Flamp1 was cloned into pJFRC28 (Addgene plasmid #36431). The vector was injected into embryos and integrated into attP40 via phiC31 by the Core Facility of Drosophila Resource and Technology (Shanghai Institute of Biochemistry and Cell Biology, Chinese Academy of Sciences). Stock 30Y-Gal4 (III) is a gift from Yi Rao lab (Peking University). Stock UAS-GFP (III) is a gift from Donggen Luo lab (Peking University). Flies UAS-G-Flamp1/+; 30Y-Gal4/+ and UAS-GFP/30Y-Gal4 were used. Flies were raised on standard cornmeal-yeast medium at 25 °C, with 70% relative humidity and a 12 h/12 h light/dark cycle.

Adult females within 2 weeks post-eclosion were used for in vivo imaging with a two-photon microscope FV1000 (Olympus) equipped with the Mai Tai Ti:Sapphire laser (Spectra-Physics) and a 25×1.05 NA water immersion objective (Olympus). The microscope was controlled using Fluoview 3.1a software. The excitation wavelength was 930 nm and a 495–540 nm emission filter was used. The sample preparation was similar as previously described⁴². Before and after odor stimulation, 1000 mL/min constant pure air was applied to the fly. During 1 s

odor stimulation, 200 mL/min air containing isoamyl acetate (Cat. No. 306967, Sigma-Aldrich) mixed with 800 mL/min pure air was delivered to the fly. For electrical shock, 80 V 500 ms electrical stimulus was applied to the fly via copper wires attached to the abdomen. For Fsk application, the blood-brain barrier was carefully removed and Fsk was applied with a 100 μ M final concentration. Customized Arduino code was used to synchronize the imaging and stimulation protocols. The sampling rate during odor stimulation, electrical shock stimulation and Fsk perfusion was 6.7, 6.7, and 1 Hz, respectively.

Animals

All procedures for animal surgery and experimentation were conducted using protocols approved by the Institutional Animal Care and Use Committees at Shenzhen Institute of Advanced Technology-CAS, Peking University, and Institute of Neuroscience-CAS.

Two-photon imaging in mice

AAV9-hSyn-G-Flamp1, AAV9-hSyn-G-Flamp1-mut and AAV9-hSyn-NES-jRGECO1a viruses were packaged at Vigene Biosciences (Jinan, China). Wild-type female C57 BL/6J mice (6–8 weeks old) were anesthetized with an injection of Avertin or isoflurane (3% induction; 1–1.5% maintenance). The skin and skull above the motor cortex were retracted from the head and a metal recording chamber was affixed. \sim 300 nL of AAV was injected into the motor cortex (AP, 1.0 mm relative to bregma; ML, 1.5 mm relative to bregma; depth, 0.5 mm from the dura). A 2 mm \times 2 mm or 4 mm \times 4 mm square coverslip was used to replace the skull. Three weeks after virus injection, wake mice were habituated for about 15 min in the treadmill-adapted imaging apparatus to minimize the potential stress effects of head restraining. The motor cortex at a depth of 100–200 μ m below the pial surface was imaged using Prairie View 5.5.64.100 software of a Bruker Ultima Investigator two-photon microscope equipped with the Spectra-Physics Insight X3 and a 16 \times 0.8 NA water immersion objective. 920 nm laser line was used for excitation of both green and red indicators. 490–560 nm and 570–620 nm filters were used for green and red fluorescence collection, respectively. The sampling rate was 1.5 Hz. For imaging analysis, we first corrected motion artifact using motion correction algorithm (EZcalcium)⁷⁴ and bleed-through between green and red channels using the spectral unmixing algorithm (see details in <https://imagej.nih.gov/ij/plugins/docs/SpectralUnmixing.pdf>). The fluorescence intensities of ROIs covering the somata were extracted using ImageJ software. Background-subtracted fluorescence intensity was used to calculate $\Delta F/F_0$. Correlations of the time series between cAMP and calcium signals were performed using Pearson correlation analysis with Matlab R2020a (MathWorks)⁷⁵.

Fiber photometry recording of cAMP signals in behaving mice

The AAV9-hSyn-G-Flamp1 virus was packaged at Vigene Biosciences (Jinan, China). Virus was unilaterally injected into NAc of adult C57BL/6N mice (male, >8 weeks old). During the surgery, mice were deeply anesthetized with isoflurane (RWD Life Science) and mounted on a stereotaxic apparatus (RWD Life Science). Approximately 300 nL of AAV2/9-hSyn-G-Flamp1 (titer 7.29×10^{13} , 1:7 diluted with 1 \times PBS before use) was injected into the NAc (AP, +1.0 mm; ML, +1.5 mm; -3.9 mm from cortical surface) at a speed of 23 nL/injection (inter-injection interval 15–30 s) using a microinjection pipette injector (Nanoject II, Drummond Scientific). A 200 μ m optic fiber (Thorlabs, FT200UMT) housed in a ceramic ferrule was implanted to the same coordinate two weeks later and a stainless steel headplate was affixed to the skull using machine screws and dental cement. After recovery (>5 days), the mouse was water-restricted to achieve 85–90% of normal body weight and prepared for behavior training. Mice were trained on an auditory conditioning task, in which three auditory cue - outcome pairs (or CS-US pairs; 8 kHz pure tone \rightarrow 9 μ L water; white noise \rightarrow brief air puff on face; 2 kHz pure tone \rightarrow nothing) were randomly delivered with 10–20 s

randomized inter-trial intervals. The duration of each sound is 1 s and sound intensity was calibrated to 70 dB. The outcomes were delivered 1 s after offset of each sound. The behavioral setup consisted of a custom-built apparatus allowing head fixation of mice. Licking behavior was detected when the tongue of the mouse contacted the water delivery tube. Lick signal was processed in an Arduino UNO board with custom code and sent digitally to the training program (written in Matlab) via a serial port. Water delivery was precisely controlled by a stepping motor pump and air puff (15 psi, 25 ms) was controlled by a solenoid valve. The timing of the pump and valve was controlled by the same Arduino UNO board used for lick detection, which also provides synchronization between the training program and data accusation system (RZ2, TDT). During the first two days of each training, the outcomes were delivered without the prediction cues. To record the fluorescence signal from the cAMP sensor, an optic fiber (Thorlabs, FT200UMT) was attached to the implanted ferrule via a ceramic sleeve. The photometry rig was constructed using parts from Doric Lens, which includes a fluorescence optical mini cube (FMC4_AE(405)_E(460–490)_F(500–550)_S), a blue led (CLED_465), a led driver (LED_2) and a photo receiver (NPM_2151_FOA_FC). During recording, a software lock-in detection algorithm (modulation frequency: 459 Hz; low-pass filter for demodulated signal: 20 Hz, 6th order) was implemented in a real-time processor (RZ2 with fiber photometry gizmo in Synapse software). The intensity of excitation light was measured as \sim 70 μ W from tip of the optical fiber. The photometry data was stored using a sampling frequency of 1017 Hz. To analyze the recording data, we first binned the raw data to 10.17 Hz (down-sampled by 100), and then fitted the binned data with a 2nd order exponential function using Matlab Curve Fitting Tool. The fitting data was then subtracted from the binned data in order to remove the baseline drift resulting from photo-bleaching, and baseline corrected data was converted to z-score for further analysis. To analyze CS- or US-evoked changes in cAMP signals, we aligned each trial to the auditory cue onset and calculated the peri-stimulus time histogram (PSTH). To compare PSTH changes during different phases of the training, we used data from the 2nd day as naive, the 5th day as trained and the 11th day as well-trained. Response to CS was defined as peak of the PSTH between CS onset to US onset and response to US was calculated accordingly using data from US onset to 2 s after US onset. To examine the contribution of dopamine signaling to the cAMP signals in NAc during spontaneous wakefulness, a potent dopamine receptor antagonist, SCH23390 (ab120597, Abcam; 0.2 mg/kg in 100 μ L 0.9 % NaCl, i.p.) was administered to mice after tens of minutes of baseline were recorded. To be noted, recordings were not interrupted during the i.p. injection. Each mouse used for analysis had been administered with both SCH23390 and vehicle (100 μ L 0.9% NaCl, i.p.), but only one of the solutions was used each single day. To quantify the change in cAMP signals, we take the mean of the z-score transformed signal to get Fig. 5j.

Statistics

The statistical significances between groups were determined using two-tailed Student's *t*-tests, One-way ANOVA tests (Fig. 3g, h) or Post hoc Tukey's tests (Fig. 5g, h) with OriginPro 9.1 (OriginLab). **P* < 0.05, ***P* < 0.01, ****P* < 0.001 and NS (not significant) for *P* > 0.05.

Reporting summary

Further information on research design is available in the Nature Research Reporting Summary linked to this article.

Data availability

The atomic coordinates and structure factors of the G-Flamp1 (no RSET peptide) and cAMP complex have been deposited in the Protein Data Bank with PDB ID code 6M63. Other PDB files used in this study are: IVP6, 3WLD, 3EVP, 3CLP, IRL3, 1U12, 2BYV, 4JV4, 3CF6, 6DGV, and 5UKG (<https://www.rcsb.org/structure/IVP6>, <https://www.rcsb.org/structure/>

3WLD, <https://www.rcsb.org/structure/3EVP>, <https://www.rcsb.org/structure/3CLP>, <https://www.rcsb.org/structure/1RL3>, <https://www.rcsb.org/structure/IU12>, <https://www.rcsb.org/structure/2BYV>, <https://www.rcsb.org/structure/4JV4>, <https://www.rcsb.org/structure/3CF6>, <https://www.rcsb.org/structure/6DGV> and <https://www.rcsb.org/structure/SUKG>). Plasmids expressing G-Flamp1 and G-Flamp1-mut have been deposited to Addgene (<https://www.addgene.org/188567>, <https://www.addgene.org/188568>, <https://www.addgene.org/188569>, <https://www.addgene.org/188570>). Source data are provided with this paper.

Code availability

The custom Arduino code for stimulation and two-photon imaging in *Drosophila*, the custom MATLAB and Arduino codes for fiber photometry in mice, and the custom MATLAB code for data analysis can be made available upon reasonable request.

References

- Karpen, J. W. Perspectives on: Cyclic nucleotide microdomains and signaling specificity. *J. Gen. Physiol.* **143**, 5–7 (2014).
- Sassone-Corsi, P. The cyclic AMP pathway. *Cold Spring Harb. Perspect. Biol.* **4**, a011148 (2012).
- Musheshe, N., Schmidt, M. & Zaccolo, M. cAMP: From long-range second messenger to nanodomain signalling. *Trends Pharm. Sci.* **39**, 209–222 (2018).
- Surdo, N. C. et al. FRET biosensor uncovers cAMP nano-domains at beta-adrenergic targets that dictate precise tuning of cardiac contractility. *Nat. Commun.* **8**, 15031 (2017).
- Bock, A. et al. Optical mapping of cAMP signaling at the nanometer scale. *Cell* **182**, 1519–1530.e1517 (2020).
- Lin, M. Z. & Schnitzer, M. J. Genetically encoded indicators of neuronal activity. *Nat. Neurosci.* **19**, 1142–1153 (2016).
- Zhang, Q. et al. Designing a green fluorogenic protease reporter by flipping a beta strand of GFP for imaging apoptosis in animals. *J. Am. Chem. Soc.* **141**, 4526–4530 (2019).
- Liu, W. et al. Genetically encoded single circularly permuted fluorescent protein-based intensity indicators. *J. Phys. D: Appl. Phys.* **53**, 113001 (2020).
- Marvin, J. S., Schreiter, E. R., Echevarria, I. M. & Looger, L. L. A genetically encoded, high-signal-to-noise maltose sensor. *Proteins* **79**, 3025–3036 (2011).
- Marvin, J. S. et al. An optimized fluorescent probe for visualizing glutamate neurotransmission. *Nat. Methods* **10**, 162–170 (2013).
- Odaka, H., Arai, S., Inoue, T. & Kitaguchi, T. Genetically-encoded yellow fluorescent cAMP indicator with an expanded dynamic range for dual-color imaging. *PLoS One* **9**, e100252 (2014).
- Hackley, Christopher R. & Justin, E. O. M. Blau cAMP_r: A single-wavelength fluorescent sensor for cyclic AMP. *Sci. Signaling* **11**, eaah3738 (2018).
- Harada, K. et al. Red fluorescent protein-based cAMP indicator applicable to optogenetics and in vivo imaging. *Sci. Rep.* **7**, 7351 (2017).
- Ohta, Y., Furuta, T., Nagai, T. & Horikawa, K. Red fluorescent cAMP indicator with increased affinity and expanded dynamic range. *Sci. Rep.* **8**, 1866 (2018).
- Nimigeon, C. M., Shane, T. & Miller, C. A cyclic nucleotide modulated prokaryotic K⁺ channel. *J. Gen. Physiol.* **124**, 203–210 (2004).
- Mukherjee, S. et al. A novel biosensor to study cAMP dynamics in cilia and flagella. *Elife* **5**, e14052 (2016).
- Chen, T.-W. et al. Ultrasensitive fluorescent proteins for imaging neuronal activity. *Nature* **499**, 295–300 (2013).
- Pedelacq, J. D., Cabantous, S., Tran, T., Terwilliger, T. C. & Waldo, G. S. Engineering and characterization of a superfolder green fluorescent protein. *Nat. Biotechnol.* **24**, 79–88 (2006).
- Griesbeck, O., Baird, G. S., Campbell, R. E., Zacharias, D. A. & Tsien, R. Y. Reducing the environmental sensitivity of yellow fluorescent protein. *J. Biol. Chem.* **276**, 29188–29194 (2001).
- Altieri, S. L. et al. Structural and energetic analysis of activation by a cyclic nucleotide binding domain. *J. Mol. Biol.* **381**, 655–669 (2008).
- Permyakov, E. A., Barnett, L. M., Hughes, T. E. & Drobizhev, M. Deciphering the molecular mechanism responsible for GCaMP6m's Ca²⁺-dependent change in fluorescence. *PLoS One* **12**, e0170934 (2017).
- Dana, H. et al. High-performance calcium sensors for imaging activity in neuronal populations and microcompartments. *Nat. Methods* **16**, 649–657 (2019).
- Özel, R. E., Lohith, A., Mak, W. H. & Pourmand, N. Single-cell intracellular nano-pH probes. *RSC Adv.* **5**, 52436–52443 (2015).
- Borner, S. et al. FRET measurements of intracellular cAMP concentrations and cAMP analog permeability in intact cells. *Nat. Protoc.* **6**, 427–438 (2011).
- Jiang, J. Y., Falcone, J. L., Curci, S. & Hofer, A. M. Interrogating cyclic AMP signaling using optical approaches. *Cell Calcium* **64**, 47–56 (2017).
- Campbell, R. E. et al. A monomeric red fluorescent protein. *Proc. Natl Acad. Sci. USA* **99**, 7877–7882 (2002).
- Shen, Y. et al. A genetically encoded Ca(2+) indicator based on circularly permuted sea anemone red fluorescent protein eqFP578. *BMC Biol.* **16**, 9 (2018).
- Sabatini, B. L. & Tian, L. Imaging neurotransmitter and neuromodulator dynamics in vivo with genetically encoded indicators. *Neuron* **108**, 17–32 (2020).
- Marvin, J. S. et al. A genetically encoded fluorescent sensor for in vivo imaging of GABA. *Nat. Methods* **16**, 763–770 (2019).
- Maillard, J. et al. Universal quenching of common fluorescent probes by water and alcohols. *Chem. Sci.* **12**, 1352–1362 (2021).
- Laviv, T. et al. In vivo imaging of the coupling between. *Neuronal CREB Act. Mouse Brain. Neuron* **105**, 799–812.e795 (2020).
- Chao et al. The structure of a membrane adenylyl cyclase bound to an activated stimulatory G protein. *Science* **364**, 389–394 (2019).
- Russwurm, M. & Koesling, D. Measurement of cGMP-generating and -degrading activities and cGMP levels in cells and tissues: Focus on FRET-based cGMP indicators. *Nitric Oxide* **77**, 44–52 (2018).
- Matsuda, S. et al. Generation of a cGMP indicator with an expanded dynamic range by optimization of amino acid linkers between a fluorescent protein and PDE5alpha. *ACS Sens.* **2**, 46–51 (2017).
- Kandel, E. R. The molecular biology of memory storage: A dialogue between genes and synapses. *Science* **294**, 1030–1038 (2001).
- Heisenberg, M. Mushroom body memoir: From maps to models. *Nat. Rev. Neurosci.* **4**, 266–275 (2003).
- Livingstone, M. S., Sziber, P. P. & Quinn, W. G. Loss of calcium/calmodulin responsiveness in adenylyl cyclase of rutabaga, a *Drosophila* learning mutant. *Cell* **37**, 205–215 (1984).
- Zars, T., Wolf, R., Davis, R. & Heisenberg, M. Tissue-specific expression of a type I adenylyl cyclase rescues the rutabaga mutant memory defect: In search of the engram. *Learn Mem.* **7**, 18–31 (2000).
- Berry, J. et al. Dopamine is required for learning and forgetting in *Drosophila*. *Neuron* **74**, 530–542 (2012).
- Cohn, R., Morantte, I. & Ruta, V. Coordinated and compartmentalized neuromodulation shapes sensory processing in *Drosophila*. *Cell* **163**, 1742–1755 (2015).
- Sun, F. et al. Next-generation GRAB sensors for monitoring dopaminergic activity in vivo. *Nat. Methods* **17**, 1156–1166 (2020).
- Sun, F. et al. A genetically encoded fluorescent sensor enables rapid and specific detection of dopamine in flies, fish, and mice. *Cell* **174**, 481–496.e419 (2018).

43. Ma, L. et al. A highly sensitive A-kinase activity reporter for imaging neuromodulatory events in awake mice. *Neuron* **99**, 665–679.e665 (2018).
44. Massengill, C.I. et al. Highly sensitive genetically-encoded sensors for population and subcellular imaging of cAMP in vivo. Preprint at *bioRxiv* <https://www.biorxiv.org/content/10.1101/2021.08.27.457999v1> (2021).
45. Lee, S. J. et al. Cell-type-specific asynchronous modulation of PKA by dopamine in learning. *Nature* **590**, 451–456 (2020).
46. Schultz, W., Dayan, P. & Montague, P. R. A neural substrate of prediction and reward. *Science* **275**, 1593–1599 (1997).
47. Muntean, B. S., Dao, M. T. & Martemyanov, K. A. Allostatic changes in the cAMP system drive opioid-induced adaptation in striatal dopamine signaling. *Cell Rep.* **29**, 946–960.e942 (2019).
48. Baldwin, A. E., Sadeghian, K. & Kelley, A. E. Appetitive instrumental learning requires coincident activation of NMDA and dopamine D1 receptors within the medial prefrontal cortex. *J. Neurosci.* **22**, 1063–1071 (2002).
49. Oe, Y. et al. Distinct temporal integration of noradrenaline signaling by astrocytic second messengers during vigilance. *Nat. Commun.* **11**, 471 (2020).
50. Zhang, S. X. et al. Hypothalamic dopamine neurons motivate mating through persistent cAMP signalling. *Nature* **597**, 245–249 (2021).
51. Zong, W. et al. Miniature two-photon microscopy for enlarged field-of-view, multi-plane and long-term brain imaging. *Nat. Methods* **18**, 46–49 (2021).
52. Muntean, B. S. et al. Interrogating the spatiotemporal landscape of neuromodulatory GPCR signaling by real-time imaging of cAMP in intact neurons and circuits. *Cell Rep.* **24**, 1081–1084 (2018).
53. Plattner, F. et al. The role of ventral striatal cAMP signaling in stress-induced behaviors. *Nat. Neurosci.* **18**, 1094–1100 (2015).
54. Nasu, Y., Shen, Y., Kramer, L. & Campbell, R. E. Structure- and mechanism-guided design of single fluorescent protein-based biosensors. *Nat. Chem. Biol.* **17**, 509–518 (2021).
55. Zhao, Y. et al. An expanded palette of genetically encoded Ca²⁺ indicators. *Science* **333**, 1888–1891 (2011).
56. Qian, Y. et al. A genetically encoded near-infrared fluorescent calcium ion indicator. *Nat. Methods* **16**, 171–174 (2019).
57. Fosque, B. F. et al. Labeling of active neural circuits in vivo with designed calcium integrators. *Science* **347**, 755–760 (2015).
58. Dana, H. et al. Sensitive red protein calcium indicators for imaging neural activity. *Elife* **5**, e12727 (2016).
59. Chu, J. et al. A bright cyan-excitable orange fluorescent protein facilitates dual-emission microscopy and enhances bioluminescence imaging in vivo. *Nat. Biotechnol.* **34**, 760–767 (2016).
60. Tian, L. et al. Imaging neural activity in worms, flies, and mice with improved GCaMP calcium indicators. *Nat. Methods* **6**, 875–881 (2009).
61. Datsenko, K. A. & Wanner, B. L. One-step inactivation of chromosomal genes in *Escherichia coli* K-12 using PCR products. *Proc. Natl Acad. Sci. USA* **97**, 6640–6645 (2000).
62. Shinoda, H. et al. Acid-tolerant monomeric GFP from *Olindias formosa*. *Cell Chem. Biol.* **25**, 330–338.e337 (2018).
63. Slepnev, S. V., Darzynkiewicz, E. & Rhoads, R. E. Stopped-flow kinetic analysis of eIF4E and phosphorylated eIF4E binding to cap analogs and capped oligoribonucleotides: evidence for a one-step binding mechanism. *J. Biol. Chem.* **281**, 14927–14938 (2006).
64. Nausch, L. W., Ledoux, J., Bonev, A. D., Nelson, M. T. & Dostmann, W. R. Differential patterning of cGMP in vascular smooth muscle cells revealed by single GFP-linked biosensors. *Proc. Natl Acad. Sci. USA* **105**, 365–370 (2008).
65. Minor, W., Cymborowski, M., Otwinowski, Z. & Chruszcz, M. HKL-3000: The integration of data reduction and structure solution—from diffraction images to an initial model in minutes. *Acta Crystallogr. D Biol. Crystallogr.* **62**, 859–866 (2006).
66. McCoy, A. J. et al. Phaser crystallographic software. *J. Appl. Crystallogr.* **40**, 658–674 (2007).
67. Adams, P. D. et al. PHENIX: A comprehensive Python-based system for macromolecular structure solution. *Acta Crystallogr. D Biol. Crystallogr.* **66**, 213–221 (2010).
68. Emsley, P., Lohkamp, B., Scott, W. G. & Cowtan, K. Features and development of Coot. *Acta Crystallogr. D Biol. Crystallogr.* **66**, 486–501 (2010).
69. Madhavi Sastry, G., Adzhigirey, M., Day, T., Annabhimoju, R. & Sherman, W. Protein and ligand preparation: Parameters, protocols, and influence on virtual screening enrichments. *J. Comput.-Aided Mol. Des.* **27**, 221–234 (2013).
70. Lu, C. et al. OPLS4: Improving force field accuracy on challenging regimes of chemical space. *J. Chem. Theory Comput.* **17**, 4291–4300 (2021).
71. Clark, A. J. et al. Prediction of protein–ligand binding poses via a combination of induced fit docking and metadynamics simulations. *J. Chem. Theory Comput.* **12**, 2990–2998 (2016).
72. Beaudoin, G. M. J. et al. Culturing pyramidal neurons from the early postnatal mouse hippocampus and cortex. *Nat. Protoc.* **7**, 1741–1754 (2012).
73. Chu, J. et al. Non-invasive intravital imaging of cellular differentiation with a bright red-excitable fluorescent protein. *Nat. Methods* **11**, 572–578 (2014).
74. Cantu, D.A. et al. EZcalcium: Open-source toolbox for analysis of calcium imaging data. *Front. Neural Circuits* **14**, 25 (2020).
75. Mann, K., Gallen, C. L. & Clandinin, T. R. Whole-brain calcium imaging reveals an intrinsic functional network in *Drosophila*. *Curr. Biol.* **27**, 2389–2396.e2384 (2017).

Acknowledgements

This work was supported by National Key Research and Development Program of China (2021YFF0502904 to J.C., 2020YFA0908802 to L.W., 2017YFA0700403 to J.C.), National Natural Science Foundation of China (81927803 and 21874145 to J.C., 32000732 to L.W.), Guangdong Basic and Applied Basic Research Foundation (2020B121201010 to J.C.), National Science Foundation of Shenzhen (JCYJ20200109115633343 to J.C.), CAS grants (DWKF20200001 and NSY889021058 to J.C.). We thank Drs. Michael Lin at Stanford University, Jonathan A. Cooper at Fred Hutchinson Cancer Research Center, François St-Pierre at Baylor College of Medicine, Yu Mu at Institute of Neuroscience-CAS, Yulin Zhao at Peking University, and Fang Liu at the Campbell Family Mental Health Research Institute, for the critical reading of this manuscript.

Author contributions

J.C. conceived and supervised the study. L.W. and J.C. designed the study. L.W. performed experiments related to the development and characterization of G-Flamp1 in vitro, in cell lines and isolated neurons with help from W.L., Y.C., Y.G., Y.L., P.T., H.Z., W.Z., S.G., and Z.L. C.L. performed western blot experiments under the supervision of P.R. Z.Z. performed protein crystallization experiments under the supervision of S.C. Y.Z. and M.H. performed molecular dynamics simulations under the supervision of H.L.N. S.Y. performed two-photon imaging experiments in zebrafish under the supervision of J.H. J.Z., Y.Y., and X.L. performed two-photon imaging experiments in flies. C.W. performed two-photon imaging experiments in behaving mice. W.P. performed fiber photometry recording experiments in behaving mice. All authors contributed to data interpretation and analysis. L.W., M.X., Y.L., and J.C. wrote the manuscript with input from other authors.

Competing interests

The authors declare no competing interests.

Additional information

Supplementary information The online version contains supplementary material available at <https://doi.org/10.1038/s41467-022-32994-7>.

Correspondence and requests for materials should be addressed to Jun Chu.

Peer review information *Nature Communications* thanks the other, anonymous reviewer(s) for their contribution to the peer review of this work.

Reprints and permission information is available at <http://www.nature.com/reprints>

Publisher's note Springer Nature remains neutral with regard to jurisdictional claims in published maps and institutional affiliations.

Open Access This article is licensed under a Creative Commons Attribution 4.0 International License, which permits use, sharing, adaptation, distribution and reproduction in any medium or format, as long as you give appropriate credit to the original author(s) and the source, provide a link to the Creative Commons license, and indicate if changes were made. The images or other third party material in this article are included in the article's Creative Commons license, unless indicated otherwise in a credit line to the material. If material is not included in the article's Creative Commons license and your intended use is not permitted by statutory regulation or exceeds the permitted use, you will need to obtain permission directly from the copyright holder. To view a copy of this license, visit <http://creativecommons.org/licenses/by/4.0/>.

© The Author(s) 2022

¹Research Center for Biomedical Optics and Molecular Imaging, Shenzhen Key Laboratory for Molecular Imaging, Guangdong Provincial Key Laboratory of Biomedical Optical Imaging Technology, Shenzhen Institute of Advanced Technology, Chinese Academy of Sciences, Shenzhen 518055, China. ²PKU-IDG–McGovern Institute for Brain Research, Beijing 100871, China. ³State Key Laboratory of Brain and Cognitive Science, Institute of Biophysics, Chinese Academy of Sciences, Beijing 100101, China. ⁴Institute of Neuroscience, State Key Laboratory of Neuroscience, CAS Center for Excellence in Brain Science and Intelligence Technology, Chinese Academy of Sciences, Shanghai 200031, China. ⁵Molecular Imaging Center, Guangdong Provincial Key Laboratory of Biomedical Imaging, The Fifth Affiliated Hospital, Sun Yat-sen University, Zhuhai 519000, China. ⁶Department of Oral Emergency and General Dentistry, Guangzhou Key Laboratory of Basic and Applied Research of Oral Regenerative Medicine, Guangdong Engineering Research Center of Oral Restoration and Reconstruction, Affiliated Stomatology Hospital of Guangzhou Medical University, Guangzhou 510182 Guangdong, China. ⁷State Key Laboratory of Neuroscience, Institute of Neuroscience, Shanghai Institutes for Biological Sciences, Center for Excellence in Brain Science and Intelligence Technology, Chinese Academy of Sciences, Shanghai 200031, China. ⁸Department of Biochemistry and Molecular Biophysics, Kansas State University, Manhattan 66506 KS, USA. ⁹Institute of Biomedicine and Biotechnology, Shenzhen Institute of Advanced Technology, Chinese Academy of Sciences, Shenzhen 518055, China. ¹⁰Brain Cognition and Brain Disease Institute, Shenzhen Institute of Advanced Technology, Chinese Academy of Sciences, Shenzhen 518055, China. ¹¹Key Laboratory of Molecular Biophysics of the Ministry of Education, College of Life Science and Technology, Huazhong University of Science and Technology, Wuhan 430074, China. ¹²Vollum Institute, Oregon Health and Science University, Portland 97239 OR, USA. ¹³Department of Experimental Medicine, The Fifth Affiliated Hospital, Sun Yat-sen University, Zhuhai 519000, China. ¹⁴Shenzhen-Hong Kong Institute of Brain Science, and Shenzhen Institute of Synthetic Biology, Shenzhen 518055, China. ¹⁵CAS Key Laboratory of Health Informatics, Shenzhen Institute of Advanced Technology, Chinese Academy of Sciences, Shenzhen 518055, China. ¹⁶These authors contributed equally: Liang Wang, Chunling Wu. ✉ e-mail: jun.chu@siat.ac.cn