


Differential Vulnerability of Hippocampal Subfields in Primary Age-Related Tauopathy and Chronic Traumatic Encephalopathy

Kurt Farrell , PhD, Megan A. Iida, BS, Jonathan D. Cherry, PhD, Alicia Casella, BS, Thor D. Stein, MD, PhD, Kevin F. Bieniek, PhD, Jamie M. Walker, MD, PhD, Timothy E. Richardson, DO, PhD, Charles L. White, III, MD, Victor E. Alvarez, MD, Bertrand R. Huber, MD, PhD, Dennis W. Dickson, MD, Ricardo Insausti, PhD, Kristen Dams-O'Connor, PhD, The Part Working Group, Ann C. McKee, MD, and John F. Crary, MD, PhD

From the Departments of Pathology, Artificial Intelligence & Human Health, Nash Family Department of Neuroscience, Ronald M. Loeb Center for Alzheimer's Disease, Friedman Brain Institute, Neuropathology Brain Bank & Research CoRE, Icahn School of Medicine at Mount Sinai, New York, New York, USA (KF, MAI, AC, JFC); Department of Pathology, Alzheimer's Disease and CTE Center, Boston University School of Medicine, Boston, Massachusetts, USA (VEA, BRH, JDC, TDS, ACM); Department of Veterans Affairs Medical Center, Bedford, Massachusetts, USA (JDC, TDS, VEA, BRH, ACM); VA Boston Healthcare System, Boston, Massachusetts, USA (JDC, TDS, VEA, BRH, ACM); Glenn Biggs Institute for Alzheimer's & Neurodegenerative Diseases, University of Texas Health Science Center, San Antonio, Texas, USA (KFB, JMW, TER); Department of Pathology, University of Texas Health Science Center, San Antonio, Texas, USA (KFB, JMW, TER); Department of Pathology, University of Texas Southwestern Medical Center, Dallas, Texas, USA (CLW); Departments of Pathology and Neuroscience, Mayo Clinic, Jacksonville, Florida, USA (DWD); Department of Neurology, Boston University School of Medicine, Boston, Massachusetts, USA (VEA, BRH, ACM); Human Neuroanatomy Laboratory, School of Medicine, University of Castilla-La Mancha, Albacete, Spain (RI); Department of Rehabilitation and Human Performance, Department of Neurology, Icahn School of Medicine at Mount Sinai, New York, New York, USA (KDCC).

Send correspondence to: John F. Crary, MD, PhD, Departments of Pathology & Neuroscience, Icahn School of Medicine at Mount Sinai, 1 Gustave L. Levy Place Box 1194, New York, NY 10029, USA; E-mail: john.crary@mountsinai.org

Kurt Farrell and Megan A. Iida contributed equally to this work. John F. Crary and Ann C. McKee contributed equally to this work.

The PART working group is a multi-institutional collaboration consisting of multiple investigators. The PART working group investigators are listed in Acknowledgments section.

This work was funded by the following sources: the NIH grants (U54NS115266, R01AG054008, R01NS095252, R01AG060961, RF1NS115268, R01AG061028, RF1AG06096, R01NS086736, F32AG056098, P30AG066514, P50AG005138, R01AG062348, P30AG072978, U19AG06875, and RF1AG057902), The Department of Veterans Affairs (BX004349), the Winspear Family Center for Research on the Neuropathology of Alzheimer Disease, The Rainwater Charitable Foundation, The Buoniconti Foundation, and The Alexander Saint-Amand Fellowship.

The authors have no duality or conflicts of interest to declare.

Abstract

Chronic traumatic encephalopathy (CTE) is a tauopathy associated with repetitive mild head impacts characterized by perivascular hyperphosphorylated tau (p-tau) in neurofibrillary tangles (NFTs) and neurites in the depths of the neocortical sulci. In moderate to advanced CTE, NFTs accumulate in the hippocampus, potentially overlapping neuroanatomically with primary age-related tauopathy (PART), an age-related tauopathy characterized by Alzheimer disease-like tau pathology in the hippocampus devoid of amyloid plaques. We measured p-tau burden using positive-pixel counts on immunohistochemically stained and neuroanatomically segmented hippocampal tissue. Subjects with CTE had a higher total p-tau burden than PART subjects in all sectors ($p = 0.005$). Within groups, PART had significantly higher total p-tau burden in CA1/subiculum compared to CA3 ($p = 0.02$) and CA4 ($p = 0.01$) and total p-tau burden in CA2 trended higher than CA4 ($p = 0.06$). In CTE, total p-tau burden in CA1/subiculum was significantly higher than in the dentate gyrus; and CA2 also trended higher than dentate gyrus ($p = 0.01$, $p = 0.06$). When controlling for p-tau burden across the entire hippocampus, CA3 and CA4 had significantly higher p-tau burden in CTE than PART ($p < 0.0001$). These data demonstrate differences in hippocampal p-tau burden and regional distribution in CTE compared to PART that might be helpful in differential diagnosis and reveal insights into disease pathogenesis.

Key Words: Aging, Chronic traumatic encephalopathy, Primary age-related tauopathy, Repetitive head impacts, Tauopathy.

INTRODUCTION

Abnormal accumulation of hyperphosphorylated tau (p-tau) in the human brain is the key pathological feature of a spectrum of conditions termed tauopathies (1). Alzheimer disease (AD) is a common secondary tauopathy characterized by

comorbid amyloid- β pathology; other tauopathies include chronic traumatic encephalopathy (CTE), which is associated with exposure to repetitive head impacts, and an age-associated tauopathy, primary age-related tauopathy (PART) (2). While there are neuropathological features that enable delineation of the tauopathies, overlaps in symptomatology, neuroanatomical vulnerability, cellular features, molecular changes, and genetic risk are barriers to the identification of specific pathogenetic pathways that might enable the development of novel biomarkers and therapeutics. Understanding the differential hippocampal neuroanatomical vulnerability to p-tau pathology in PART and CTE has the potential to improve diagnosis, provide mechanistic insights, and inform therapeutic strategies (3).

The hippocampal formation, a component of the limbic system, is a complex multifunctional brain region in the medial aspect of the temporal lobe that has critical roles in learning, memory, and cognition (4). The hippocampal formation consists of several histologically distinct and functionally specialized subfields, including the dentate gyrus, cornu ammonis (CA), and subiculum. The subfields are selectively vulnerable in different neurodegenerative tauopathies. For example, the dentate gyrus is selectively involved in Pick disease, a 3 microtubule-binding domain (3R) dominant tauopathy; CA2 is involved in 4 microtubule-binding domain repeat (4R)-dominant tauopathies, including progressive supranuclear palsy; and CA1 involvement is predominant in AD, a combined 3R/4R tauopathy (5–7). Recent refinements in neuropathological criteria for PART and CTE have allowed clearer delineation of these entities (8, 9), although both are reported to exhibit high levels of phosphorylated tau (p-tau) in CA2 and other hippocampal sectors (10–14).

The goal of this study was to compare the regional hippocampal p-tau pathology in CTE and PART. To accomplish this, we used age- and sex-matched cases from each entity, as defined by recent neuropathological consensus criteria, and segmented the hippocampus into subfields on digitized whole slide images of immunohistochemically stained brain tissue sections (9). We then deployed a quantitative positive pixel burden measure of p-tau pathology that we previously found to be highly predictive of clinical outcomes in PART (15). Using this computational approach to measure p-tau pathology minimized bias and highlighted neuropathological-related differences in p-tau neurofibrillary degeneration.

MATERIALS AND METHODS

Subjects

Postmortem human brain tissue was obtained from former American football players, following a comprehensive neuropathological workup using the published NINDS-NIBIB criteria for the diagnosis of CTE in 2021 and staged using the McKee criteria which we found to be highly correlated with exposure and symptomatology (9, 16, 17). Next-of-kin provided written consent for participation and brain donation. IRB approval for brain donation was obtained through the Boston University School of Medicine and VA Boston Healthcare System. CTE cases were selected based on the availabil-

ity of paraffin-embedded hippocampal sections at the level of the lateral geniculate nucleus. PART cases were selected from a collection derived from domestic and international brain banks and were also taken at the level of the lateral geniculate nucleus (15, 18). Neuropathological inclusion and exclusion for PART cases have been detailed elsewhere (11, 18). The PART cases were sex-matched to the CTE group but given that PART is associated with aging and the CTE cases available were ascertained from younger donors, the samples could not be individually age-matched. There was, however, no statistical difference between the average age of each group. All PART subjects had a CERAD score of 0 (19) and a Braak stage of 0–IV (20) to represent the full range of age-related tau pathology.

Immunohistochemistry

Whole mount immunohistochemistry was performed as previously described using the CP13 antisera, a generous gift of Dr. Peter Davies (21). Formalin-fixed paraffin-embedded tissue sections (5 μ m in thickness) mounted on charged slides were baked at 70°C and immunohistochemistry was performed on a Leica Bond III (Leica Biosystems, Buffalo Grove, IL) for all cases. Antigen retrieval was done using citric acid buffer for 1 hour followed by primary antibody incubation for 40 minutes. Slides were stained for phospho-tau (AT8; MN1020, Thermo Fisher Scientific, Waltham, MA). Because the Leica bond III can only stain 30 slides per batch, each batch included a case of severe AD, CERAD plaque score 2, Braak stage VI to ensure uniform pixel staining intensity.

Segmentation of the Hippocampal Subfields

A hematoxylin and eosin slide counterstained with Luxol fast blue (LH&E) was prepared using routine protocols to assist in segmentation. All slides were scanned using an Aperio CS2 Scanner (Leica Biosystems, Buffalo Grove, IL) at 20 \times magnification and digital analysis including segmentation of the subfields and pixel counting (see below) was done using the ImageScope v12.3 software (Leica Biosystems). Given that no validated standardized protocol exists for hippocampal segmentation on routine neuropathological staining, we developed the following protocol to maximize uniformity and reproducibility (Fig. 1). The subregions of the hippocampus were defined based on cell morphology and density. LH&E-stained hippocampal sections were scrutinized and compared to an adjacent AT8-immunostained section. Then segmentation was performed. The cornu ammonis 2 (CA2) was first annotated with the medial and lateral boundaries drawn encompassing the most compact region. The cornu ammonis 4 (CA4) boundaries were drawn closing the opening of the dentate and circling only cell bodies within the dentate gyrus. The cornu ammonis 3 (CA3) was drawn as the area between CA4 and CA2. The cornu ammonis 1 (CA1) and subiculum were combined (termed CA1/sub) and drawn from CA2 to the recess of the hippocampal fissure where a straight line was drawn. The CA layers included in the annotation were the stratum oriens, stratum pyramidale, stratum lucidum, stratum radiatum, stratum lacunosum, and stratum moleculare ending

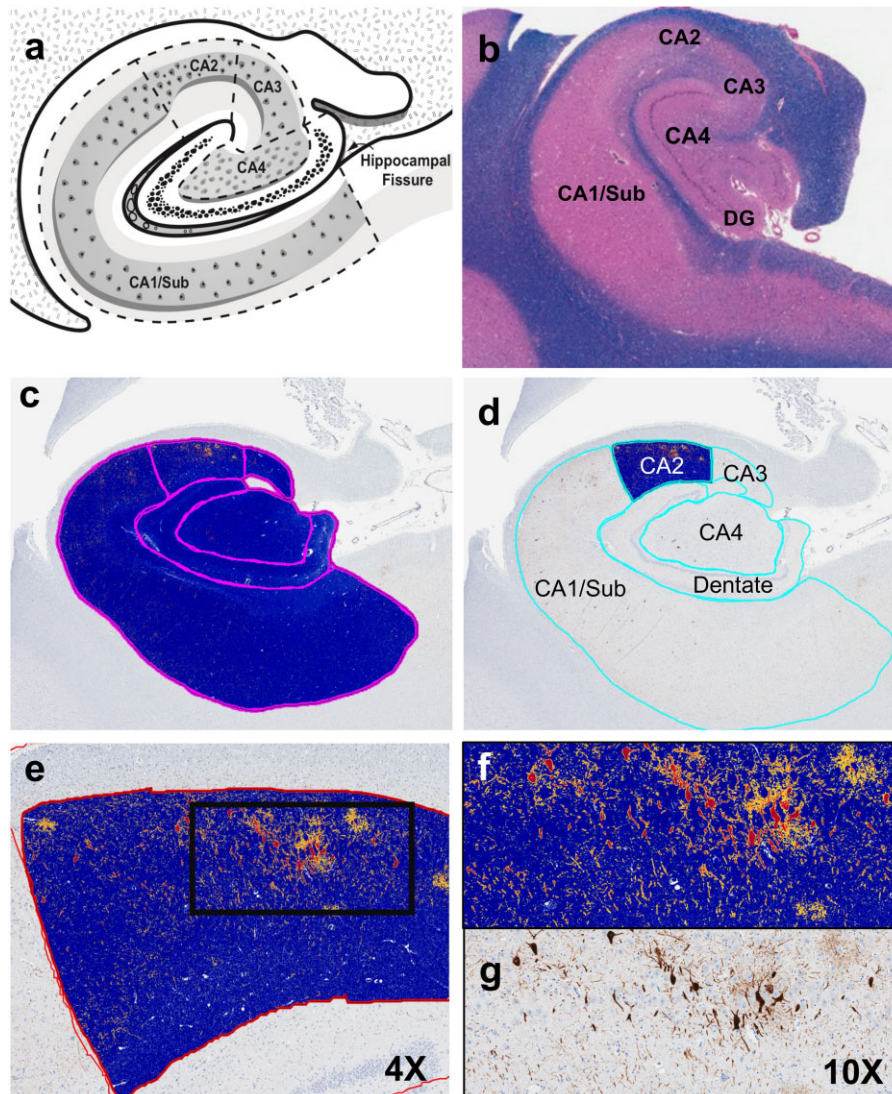


FIGURE 1. Neuroanatomical segmentation strategy and p-tau burden quantification. **(a)** Schematic illustrating the hippocampal subregions. **(b)** Representative Luxol fast blue-counterstained hematoxylin and eosin section (LH&E) from a control showing the hippocampal subregions. **(c)** Example of a fully segmented hippocampal formation following application of the positive pixel algorithm. **(d)** Example of quantification of the positive pixel count algorithm in CA2. **(e)** Higher-power images of CA2 are shown at 4× **(f, g)** as well as 10× showing that the pixel thresholds capture intracellular tangles (red) threads and dots (orange and yellow). The example case shown above had a diagnosis of PART.

at the hippocampal sulcus. The dentate gyrus was outlined with the outer boundary at the hippocampal sulcus (following blood vessels) and inner boundary in CA4 not including the cell bodies.

Computer-Assisted Quantitative Assessment of Hyperphosphorylated Tau (p-Tau) Burden

The Aperio positive pixel count algorithm (version 9) was used to quantify p-tau burden (Fig. 1). The parameters of the algorithm were defined by the user based on the intensity of the signal in the positive control AD case run in each staining batch and the thresholds remained the same for each case.

The output values were low (proxy for delicate threads), medium (proxy for dense/coarse threads), and high intensity (proxy for neurofibrillary tangles [NFTs]) pixels. P-tau burden was assessed in 2 ways. First, each p-tau positive pixel contained in the subregion was divided by the total pixels (p-tau positive and negative) contained in the subregion producing a 0-1 p-tau burden score (1 indicating the entire region was positive, and 0 no positive pixels). Second, we used the p-tau burden score and divided it by the total p-tau positive pixels in the entire hippocampus (CA1/subiculum, CA2, CA3, CA4, and dentate) divided by the total pixels (p-tau positive and negative). This value represented a proportion of p-tau intensity. A score greater than 1 indicated that the region had more total

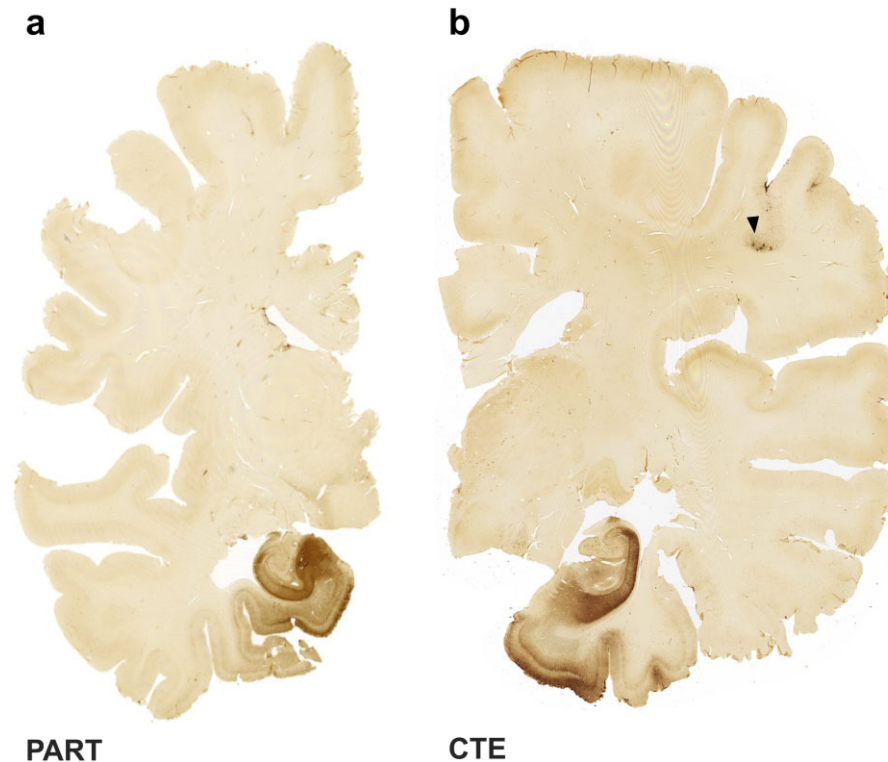


FIGURE 2. Selective vulnerability of the hippocampal formation in PART and CTE. **(a)** Whole mount hemibrain stained for p-tau from a 92-year-old woman with PART showing significant p-tau burden confined to the medial temporal lobe with scant neocortical p-tau (CP13 antisera). **(b)** A 67-year-old male professional football player with CTE stage 3 with low cortical p-tau burden and scattered cortical lesions (see arrow).

p-tau relative to the entire hippocampus, with the rationale that the relative proportion of p-tau could assist in differentiating the 2 conditions when viewing a slide at a low magnification.

Statistical Analysis

Data were statistically analyzed and visualized using the statistical software GraphPad Prism 8 (San Diego, CA). P-tau burden across hippocampal subregions were compared within PART and CTE groups using Kruskal-Wallis one-way analysis of variance. The hippocampal subregional total p-tau burden (modeled to consider p-tau burden in the entire hippocampus) was compared in PART versus CTE using the Mann-Whitney test. Statistical significance was defined as $\alpha < 0.05$ (2-tailed).

RESULTS

Overlapping Medial Temporal Lobe Neurofibrillary Pathology in PART and Advanced CTE

Neuropathologically, PART has NFTs predominantly in the medial temporal lobe in the absence of or with sparse neuritic β -amyloid pathology (Fig. 2). CTE displays patchy perivascular p-tau pathology at the depths of the cortical sulci in early disease stages and extends to include diffuse neurofibril-

lary p-tau pathology in the medial temporal lobe in more advanced stages (17, 21).

Selective Vulnerability of Hippocampal Regions in PART and CTE

For the quantitative analyses, 32 neuropathologically confirmed PART and 32 neuropathologically confirmed CTE cases were included (Table). The overall median age at death of the cohort was 72.5 years with a range of 25–84 years. There was no significant difference between the average age of each cohort and most of the cases in each cohort were between 66 and 85 years old (78.1% in PART, 65.6% for CTE). All cases were male. Four PART cases were cognitively impaired, whereas 18 CTE cases had clinical evidence of cognitive impairment. The average age of the CTE subjects with cognitive impairment was 72.38 and 10 of those cases had a CERAD score of 1. All the PART and 56.2% of the CTE lacked neuritic plaques (CERAD 0). The remaining 40.6% CTE cases had sparse neuritic plaques (CERAD A1). Nineteen of the PART cases had a Braak NFT stage of I–II and 9 were III–IV. Four cases in the PART group were designated Braak 0 with too few p-tau positive neural structures to categorize as Braak I. Twenty-four of the CTE cases had a CTE stage of III–IV and 8 were stage I–II.

CTE cases had significantly higher p-tau burden in the hippocampus compared to PART cases across all comparisons

TABLE. Patient Data

	PART	CTE	Total
Clinical features			
Sample size, <i>n</i>	32	32	64
Average age of death (range)	74 (55–82)	70 (25–84)	
25–45 (%)	0 (0)	4 (12.5)	4 (6.5)
46–65 (%)	7 (21.9)	7 (21.9)	14 (22.6)
66–85 (%)	25 (78.1)	21 (65.6)	46 (74.2)
Sex, male (%)	32 (100)	32 (100)	64
Cognitively impaired* (%)	4 (12.5)	18 (60)	22 (35.5)
Neuropathological features			
CERAD score (%) [†]			
No neuritic plaques (C0)	32 (100)	18 (56.2)	50 (79.4)
Sparse (C1)	0 (0)	13 (40.6)	13 (20.6)
Moderate (C2)	0 (0)	0 (0)	0 (0)
Frequent (C3)	0 (0)	0 (0)	0 (0)
Braak stage (%)			
0	4 (12.5)	NA	—
I–II	19 (59.4)	NA	—
III–IV	9 (28.1)	NA	—
V–VI	0 (0)	NA	—
CTE stage (%)			
I–II	NA	8 (25)	—
III–IV	NA	24 (75)	—

NA, not applicable.
 *Two CTE cases have unknown cognitive status.
[†]One CTE case has unknown CERAD stage.

(Fig. 3), although there were unique subregion differences. In PART, there was a significantly higher total p-tau burden in CA1/subiculum compared to CA3 ($p=0.02$) and CA4 ($p=0.01$). Total p-tau burden trended higher in CA2 than CA4 ($p=0.06$). All other total p-tau burden comparisons amongst subregions of the hippocampus in PART were not different. In CTE, we saw that CA1/subiculum had significantly higher total p-tau burden than dentate ($p=0.01$). CA2 p-tau burden showed a trend toward higher total p-tau burden compared to the dentate ($p=0.06$). All other comparisons amongst subregions of the hippocampus were not significantly different in the CTE group. The data suggest regional differences in p-tau burden in each disease.

Differences in Regional Vulnerability between PART and CTE

Finally, we examined differences in subfield regional vulnerability using a model that accounted for the total p-tau burden observed across the entire hippocampus (Fig. 4). We observed that subfields CA3 and CA4 had significantly higher p-tau burden in CTE compared to PART ($p < 0.0001$ in both cases). PART cases had significantly higher total p-tau burden in CA1 than CTE cases ($p=0.005$). Total p-tau burden did not differ in CA2 ($p=0.68$) and dentate ($p=0.26$) between PART and CTE. The data suggest a distinctive regional signature when adjusting for the total burden across the entire hip-

poampus, with relatively more p-tau in CA3 and CA4 in CTE than in PART.

DISCUSSION

The ability to differentiate ubiquitous aging-related changes from preventable causes of injury has numerous implications (22). This is exemplified by PART and CTE, two tauopathies with both similar and divergent clinical and neuropathological profiles (8, 9, 11, 14, 21, 23). In CTE, there is a strong and independently replicated link with repetitive head impacts (24, 25), and its pathological signatures have been observed across the adult lifespan independent of age. By contrast, PART is observed in the brains of advanced age (26) and has not been associated with a specific environmental exposure. To our knowledge, this study is the first to directly compare the selective p-tau deposition in the hippocampus in these two tauopathies. Our findings suggest that there is a divergent pattern of regional vulnerability in the hippocampus that distinguishes CTE from PART.

Previous work has highlighted regional p-tau deposition in the hippocampus in PART (11–13) and CTE (10, 14). Jellinger (12) reported that PART diverges from AD in that there are more p-tau positive neurons in CA2 than CA1. We also observed selective vulnerability of CA2 to p-tau pathology in PART (11). However, a small quantitative study by Zhang and colleagues found that CA1 and subiculum had the highest p-tau burden in PART, followed by entorhinal cortex, CA2/3 (which were combined and possibly obscured potential differences), CA4, and the dentate (13). Selective vulnerability of CA2 has also been reported in CTE (11, 14). Furthermore, a high p-tau burden across the entire hippocampal formation except for the dentate gyrus has been observed in CTE (14). Here, our quantitative analysis showed a striking vulnerability of the CA1/subiculum and CA2 for p-tau pathology in CTE compared to other subfields. Neuroimaging studies in suspected CTE cases have reported the CA1/subiculum to be highly atrophic (27). Our analysis revealed a significantly higher p-tau burden in the CA1/subiculum in PART compared to CTE, and a higher p-tau burden in CA3 and CA4 in CTE, which is consistent with recent work (9).

Although there are similarities, these findings suggest that the hippocampal p-tau pathology in CTE and PART can be differentiated neuropathologically, a distinction that has been previously questioned (28). These data also provide more information about the diagnostic features of CTE in addition to the pathognomonic lesion. These selective patterns of hippocampal involvement in PART and CTE might be useful in the interpretation of neuroimaging studies, for example tau PET tracers that are increasingly being applied to CTE (29). It is unclear why CA1/subiculum and CA2 are selectively vulnerable in PART and CTE and understanding the cellular or molecular factors native to these neuronal populations might be helpful in understanding the pathogenesis of these tauopathies.

There are several limitations to this study. The sample size was limited due to the inherent restrictions of autopsy studies. The PART subjects were from a collection derived from many brain banks, while the CTE cases all came from

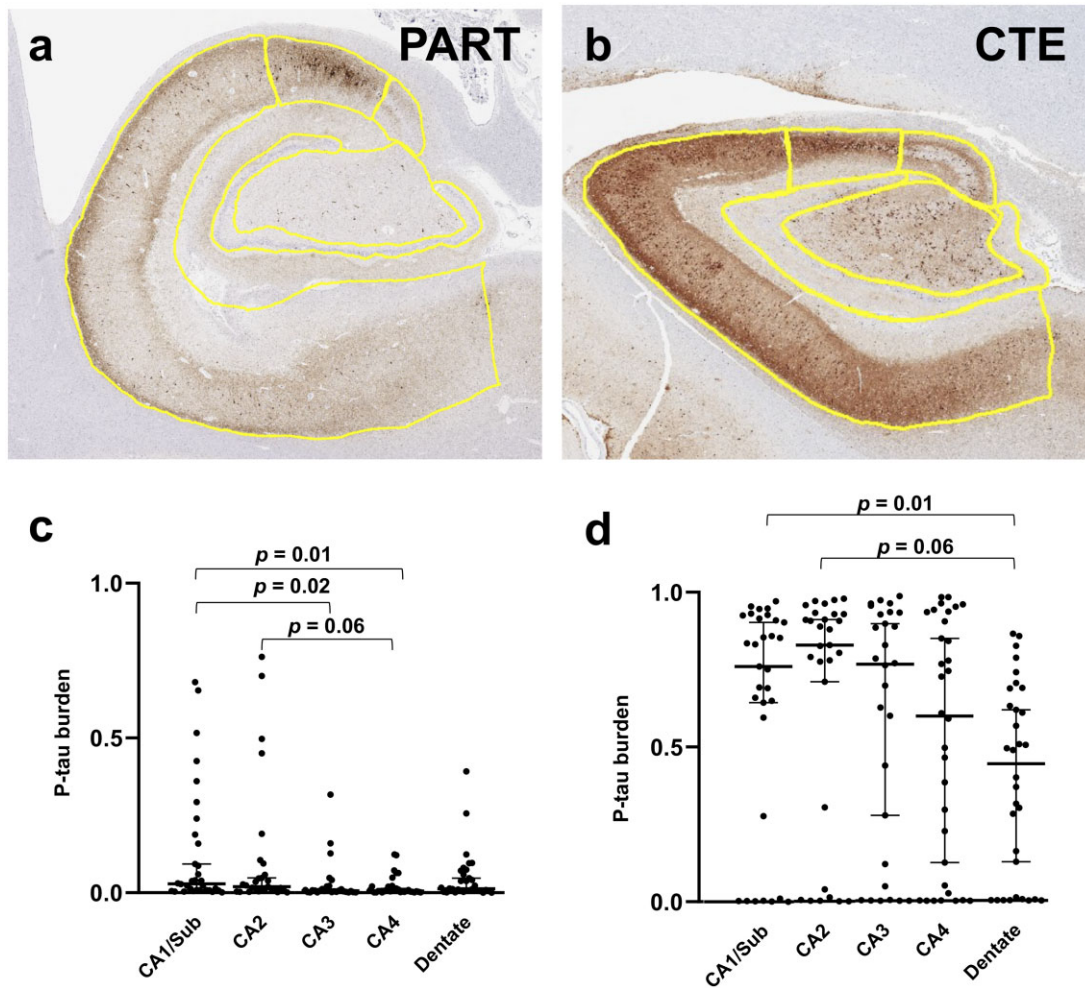


FIGURE 3. Quantitative assessment of selective hippocampal vulnerability in PART and CTE. **(a, b)** Examples of a whole slide images of hyperphosphorylated tau (p-tau, AT8) immunolabeled hippocampal sections from subjects with PART and CTE annotated using our segmentation protocol. **(c, d)** P-tau burden was measured in each subfield using positive pixel counts and modeled to consider burden across the entire hippocampal formation. Comparisons were performed using Kruskal-Wallis one-way analysis of variance.

one center, which might have introduced bias. The dataset was restricted to males due to the less frequent reporting of CTE in females. Future studies including female CTE brain donors, such as have been reported in the context of intimate partner violence (30, 31), are needed. Segmentation of the hippocampus is also challenging on routine paraffin sections. Specialized techniques (e.g., thick sections), could assist in providing the highest degree of confidence in accurate segmentation. In addition, there are numerous co-pathologies that occur alongside CTE and PART, which might have influenced our findings; additional multidimensional analyses will be helpful to address this. Specifically, some CTE cases had neuritic plaques, implying an additional neuropathological diagnosis of AD neuropathologic change. It could also be inferred that some of the older CTE cases had age-related tau deposition and the results of this study should be viewed in this context. To overcome these issues, we anticipate that the use of digital approaches including AI and machine learning will enable

larger and more granular, quantitative analyses of multiple brain regions, including the entorhinal cortex and amygdala, to understand the differences between pathological and age-related neurodegenerative features of both these conditions. Nevertheless, these data show striking and robust differences between CTE and PART in the hippocampus that are consistent with previous publications.

In summary, in a cohort of age- and sex-matched PART and CTE subjects, we demonstrated a divergent pattern of regional p-tau vulnerability in the hippocampal subfields. These data represent a deep analysis of two unique tauopathies and might assist those practicing diagnostic neuropathology as well as provide insights into their differing pathogenesises.

ACKNOWLEDGMENTS

We express our deepest gratitude to the patients and staff of the contributing centers and institutes. Additionally, we would like to acknowledge The Neuropathology Brain

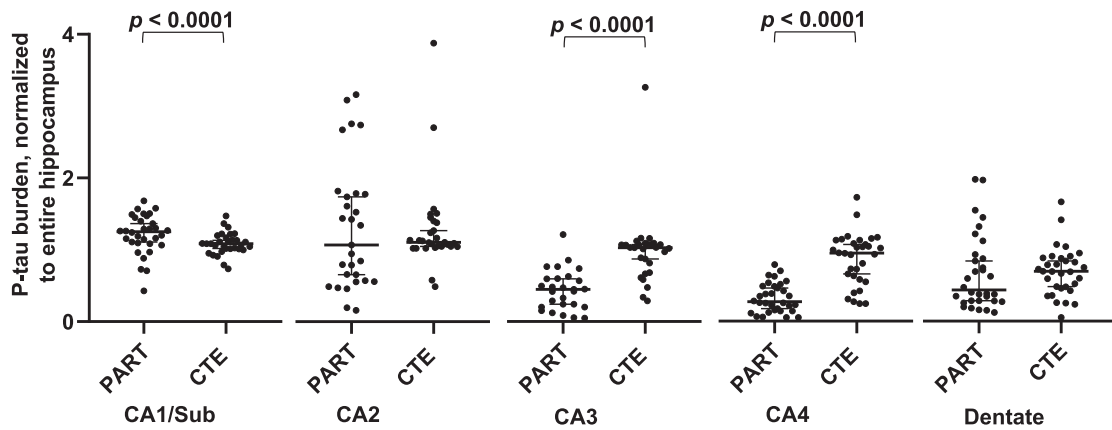


FIGURE 4. Differences in subfield regional vulnerability in PART and CTE accounting for the total p-tau burden in the entire hippocampus. Total p-tau positive pixels were modeled to consider the total hippocampus proper p-tau. Comparisons were performed using a Mann-Whitney test.

Bank & Research CoRE at Mount Sinai, Ping Shang, Jeff Harris, and Chan Foong of the UT Southwestern Neuropathology Laboratories, and the Veterans Affairs-Boston University-Concussion Legacy Foundation or Understanding Neurological Injury and Traumatic Encephalopathy (UNITE) brain bank team.

The PART working group: Jean-Paul Vonsattel (Department of Pathology and Cell Biology, Department of Neurology, and the Taub Institute for Research on Alzheimer’s Disease and the Aging Brain, Columbia University Medical Center, New York, NY), Andy F. Teich (Department of Pathology and Cell Biology, Department of Neurology, and the Taub Institute for Research on Alzheimer’s Disease and the Aging Brain, Columbia University Medical Center, New York, NY), Marla Gearing (Department of Pathology and Laboratory Medicine (Neuropathology) and Neurology, Emory University School of Medicine, Atlanta, GA), Jonathan Glass (Department of Pathology and Laboratory Medicine (Neuropathology) and Neurology, Emory University School of Medicine, Atlanta, GA), Juan C. Troncoso (Department of Pathology, Division of Neuropathology, Johns Hopkins University School of Medicine, Baltimore, MD), Matthew P. Frosch (Department of Neurology and Pathology, Harvard Medical School and Massachusetts General Hospital, Charlestown, MA), Bradley T. Hyman (Department of Neurology and Pathology, Harvard Medical School and Massachusetts General Hospital, Charlestown, MA), Melissa E. Murray (Department of Neuroscience, Mayo Clinic, Jacksonville, FL), Johannes Attems (Translational and Clinical Research Institute, Newcastle University, Newcastle upon Tyne, UK), Margaret E. Flanagan (Department of Pathology (Neuropathology), Northwestern Cognitive Neurology and Alzheimer Disease Center, Northwestern University Feinberg School of Medicine, Chicago, IL), Qinwen Mao (Department of Pathology (Neuropathology), Northwestern Cognitive Neurology and Alzheimer Disease Center, Northwestern University Feinberg School of Medicine, Chicago, IL), M-Marsel

Mesulam (Department of Pathology (Neuropathology), Northwestern Cognitive Neurology and Alzheimer Disease Center, Northwestern University Feinberg School of Medicine, Chicago, IL), Sandra Weintraub (Department of Pathology (Neuropathology), Northwestern Cognitive Neurology and Alzheimer Disease Center, Northwestern University Feinberg School of Medicine, Chicago, IL), Randy L. Woltjer (Department of Pathology, Oregon Health Sciences University, Portland, OR), Thao Pham (Department of Pathology, Oregon Health Sciences University, Portland, OR), Julia Kofler (Department of Pathology [Neuropathology], University of Pittsburgh Medical Center, Pittsburgh, PA), Julie A. Schneider (Departments of Pathology [Neuropathology] and Neurological Sciences, Rush University Medical Center, Chicago, IL), Lei Yu (Departments of Pathology [Neuropathology] and Neurological Sciences, Rush University Medical Center, Chicago, IL), Dushyant P. Purohit (Department of Pathology, Neuropathology Brain Bank and Research CoRE, Icahn School of Medicine at Mount Sinai, New York, NY), Vahram Haroutunian (Department of Psychiatry, Alzheimer’s Disease Research Center, James J. Peters VA Medical Center, Nash Department of Neuroscience, Ronald M. Loeb Center for Alzheimer’s Disease, Friedman Brain Institute, Icahn School of Medicine at Mount Sinai, New York, NY), Patrick R. Hof (Nash Department of Neuroscience, Ronald M. Loeb Center for Alzheimer’s Disease, Friedman Brain Institute, Icahn School of Medicine at Mount Sinai, New York, NY), Sam Gandy (Departments of Psychiatry and Neurology, Center for Cognitive Health, Alzheimer’s Disease Research Center, James J. Peters VA Medical Center, Icahn School of Medicine at Mount Sinai, New York, NY and Department of Icahn School of Medicine at Mount Sinai, New York, NY), Mary Sano (Department of Psychiatry, Alzheimer’s Disease Research Center, James J. Peters VA Medical Center, Icahn School of Medicine at Mount Sinai, New York, NY), Thomas G. Beach (Department of Neuropathology, Banner Sun Health Re-

search Institute, Sun City, AZ), Wayne Poon (Department of Neurology, Department of Epidemiology, Institute for Memory Impairments and Neurological Disorders, UC Irvine, Irvine, CA), Claudia H. Kawas (Department of Neurology, Department of Neurobiology and Behavior, Institute for Memory Impairments and Neurological Disorders, UC Irvine, Irvine, CA), María M. Corrada (Department of Neurology, Department of Epidemiology, Institute for Memory Impairments and Neurological Disorders, UC Irvine, Irvine, CA), Robert A. Rissman (Department of Neurosciences University of California and the Veterans Affairs San Diego Healthcare System, La Jolla, San Diego, CA), Jeff Metcalf (Department of Neurosciences University of California and the Veterans Affairs San Diego Healthcare System, La Jolla, San Diego, CA), Sara Shuldberg (Department of Neurosciences University of California and the Veterans Affairs San Diego Healthcare System, La Jolla, San Diego, CA), Bahar Salehi (Department of Neurosciences University of California and the Veterans Affairs San Diego Healthcare System, La Jolla, San Diego, CA), Peter T. Nelson (Department of Pathology [Neuropathology] and Sanders-Brown Center on Aging, University of Kentucky, Lexington, KY), John Q. Trojanowski (Center for Neurodegenerative Disease Research, Department of Pathology and Laboratory Medicine, Perelman School of Medicine, University of Pennsylvania, Philadelphia, PA), Edward B. Lee (Center for Neurodegenerative Disease Research, Department of Pathology and Laboratory Medicine, Perelman School of Medicine, University of Pennsylvania, Philadelphia, PA), David A. Wolk (Department of Neurology, Perelman School of Medicine, University of Pennsylvania, Philadelphia, PA), Corey T. McMillan (Department of Neurology, Perelman School of Medicine, University of Pennsylvania, Philadelphia, PA), C. Dirk Keene (Department of Laboratory Medicine and Pathology, University of Medicine, Seattle, WA), Caitlin S. Latimer (Department of Laboratory Medicine and Pathology, University of Medicine, Seattle, WA), Thomas J. Montine (Department of Laboratory Medicine and Pathology, University of Medicine, Seattle, WA and Department of Pathology, Stanford University, Palo Alto, CA), Gabor G. Kovacs (Laboratory Medicine Program, Krembil Brain Institute, University Health Network, Toronto, ON, Canada, Tanz Centre for Research in Neurodegenerative Disease and Department of Laboratory Medicine and Pathobiology, University of Toronto, Toronto, Ontario, Canada, and Institute of Neurology, Medical University of Vienna, Vienna, Austria), Mirjam I. Lutz (Institute of Neurology, Medical University of Vienna, Vienna, Austria), Peter Fischer (Department of Psychiatry, Danube Hospital, Vienna, Austria), Richard J Perrin (Department of Pathology and Immunology, Department of Neurology, Knight Alzheimer Disease Research Center, Washington University School of Medicine, St. Louis, MO), Nigel J. Cairns (College of Medicine and Health, University of Exeter, Exeter, UK).

REFERENCES

1. Kovacs GG. Invited review: neuropathology of tauopathies: principles and practice. (Research Support, Non-U.S. Neuropathol Appl Neurobiol 2015;41:3–23
2. Josephs KA. Current understanding of neurodegenerative diseases associated with the protein tau. *Mayo Clin Proc* 2017;92:1291–303
3. Jaunmuktane Z, Brandner S. On the journey to uncover the causes of selective cellular and regional vulnerability in neurodegeneration. *Acta Neuropathol* 2019;138:677–80
4. Ravikumar S, Wisse LEM, Lim S, et al. Ex vivo MRI atlas of the human medial temporal lobe: characterizing neurodegeneration due to tau pathology. *Acta Neuropathol Commun* 2021;9:173
5. Ishizawa T, Ko LW, Cookson N, et al. Selective neurofibrillary degeneration of the hippocampal CA2 sector is associated with four-repeat tauopathies. *J Neuropathol Exp Neurol* 2002;61:1040–7
6. Armstrong RA, Cairns NJ, Lantos PL. Clustering of Pick bodies in the dentate gyrus in Pick's disease. *Neuropathology* 2000;20:170–5
7. Milenkovic I, Petrov T, Kovacs GG. Patterns of hippocampal tau pathology differentiate neurodegenerative dementias. *Dement Geriatr Cogn Disord* 2014;38:375–88
8. Cray JF, Trojanowski JQ, Schneider JA, et al. Primary age-related tauopathy (PART): a common pathology associated with human aging. *Acta Neuropathol* 2014;128:755–66
9. Bieniek KF, Cairns NJ, Cray JF, et al.; TBI/CTE Research Group. The second NINDS/NIBIB consensus meeting to define neuropathological criteria for the diagnosis of chronic traumatic encephalopathy. *J Neuropathol Exp Neurol* 2021;80:210–9
10. Cherry JD, Esnault CD, Baucom ZH, et al. Tau isoforms are differentially expressed across the hippocampus in chronic traumatic encephalopathy and Alzheimer's disease. *Acta Neuropathol Commun* 2021;9:86
11. Walker JM, Richardson TE, Farrell K, et al. Early selective vulnerability of the CA2 hippocampal subfield in primary age-related tauopathy. *J Neuropathol Exp Neurol* 2021;80:102–11
12. Jellinger KA. Different patterns of hippocampal tau pathology in Alzheimer's disease and PART. *Acta Neuropathol* 2018;136:811–3
13. Zhang L, Jiang Y, Zhu J, et al. Quantitative assessment of hippocampal tau pathology in AD and PART. *J Mol Neurosci* 2020;70:1808–1811
14. McKee AC, Stein TD, Kiernan PT, et al. The neuropathology of chronic traumatic encephalopathy. *Brain Pathol* 2015;25:350–64
15. Iida MA, Farrell K, Walker JM, et al. Predictors of cognitive impairment in primary age-related tauopathy: an autopsy study. *Acta Neuropathol Commun* 2021;9:134
16. Alosco ML, Cherry JD, Huber BR, et al. Characterizing tau deposition in chronic traumatic encephalopathy (CTE): utility of the McKee CTE staging scheme. *Acta Neuropathol* 2020;140:495–512
17. McKee AC, Stern RA, Nowinski CJ, et al. The spectrum of disease in chronic traumatic encephalopathy. *Brain* 2013;136:43–64
18. Farrell K, Kim S, Han N, et al. Genome-wide association study and functional validation implicates JADE1 in tauopathy. *Acta Neuropathol* 2022;143:33–53
19. Mirra SS, Heyman A, McKeel D, et al. The Consortium to Establish a Registry for Alzheimer's Disease (CERAD). Part II. Standardization of the neuropathologic assessment of Alzheimer's disease. *Neurology* 1991;41:479–86
20. Braak H, Braak E. Staging of Alzheimer's disease-related neurofibrillary changes. *Neurobiol Aging* 1995;16:271–8; discussion 278–84
21. McKee AC, Cantu RC, Nowinski CJ, et al. Chronic traumatic encephalopathy in athletes: progressive tauopathy after repetitive head injury. *J Neuropathol Exp Neurol* 2009;68:709–35
22. Wortzel HS, Brenner LA, Arciniegas DB. Traumatic brain injury and chronic traumatic encephalopathy: a forensic neuropsychiatric perspective. *Behav Sci Law* 2013;31:721–38
23. Santa-Maria I, Haggiagi A, Liu X, et al. The MAPT H1 haplotype is associated with tangle-predominant dementia. *Acta Neuropathol* 2012;124:693–704
24. Bieniek KF, Ross OA, Cormier KA, et al. Chronic traumatic encephalopathy pathology in a neurodegenerative disorders brain bank. *Acta Neuropathol* 2015;130:877–889
25. Mez J, Daneshvar DH, Kiernan PT, et al. Clinicopathological evaluation of chronic traumatic encephalopathy in players of American Football. *JAMA* 2017;318:360–70
26. Hof PR, Glannakopoulos P, Bouras C. The neuropathological changes associated with normal brain aging. *Histol Histopathol* 1996;11:1075–88
27. Parivash SN, Goubran M, Mills BD, et al. Longitudinal changes in hippocampal subfield volume associated with collegiate football. *J Neurotrauma* 2019;36:2762–73

28. Chen YH, Tao QQ. Chronic traumatic encephalopathy and primary age-related tauopathy. *Ann Neurol* 2020;88:1052
29. Bergauer A, van Osch R, van Elferen S, et al. The diagnostic potential of fluid and imaging biomarkers in chronic traumatic encephalopathy (CTE). *Biomed Pharmacother* 2022;146:112602
30. Danielsen T, Hauch C, Kelly L, et al. Chronic traumatic encephalopathy (CTE)-type neuropathology in a young victim of domestic abuse. *J Neuropathol Exp Neurol* 2021;80:624–7
31. Roberts GW, Whitwell HL, Acland PR, et al. Dementia in a punch-drunk wife. *Lancet* 1990;335:918–9